

Data Path : Z:\HPCHEM1\BNA G\DATA\BG121817\
 Data File : BG031652.D
 Acq On : 19 Dec 2017 2:29
 Operator : SJ/JU
 Sample : I6677-06
 Misc :
 ALS Vial : 17 Sample Multiplier: 1

Instrument :
 BNA_G
 ClientSampleId :

Quant Time: Dec 19 07:07:47 2017
 Quant Method : Z:\HPCHEM1\BNA G\METHODS\8270-BG121117.M
 Quant Title : ASP BNA STANDARDS FOR 5 POINT CALIBRATION
 QLast Update : Mon Dec 11 17:25:55 2017
 Response via : Initial Calibration

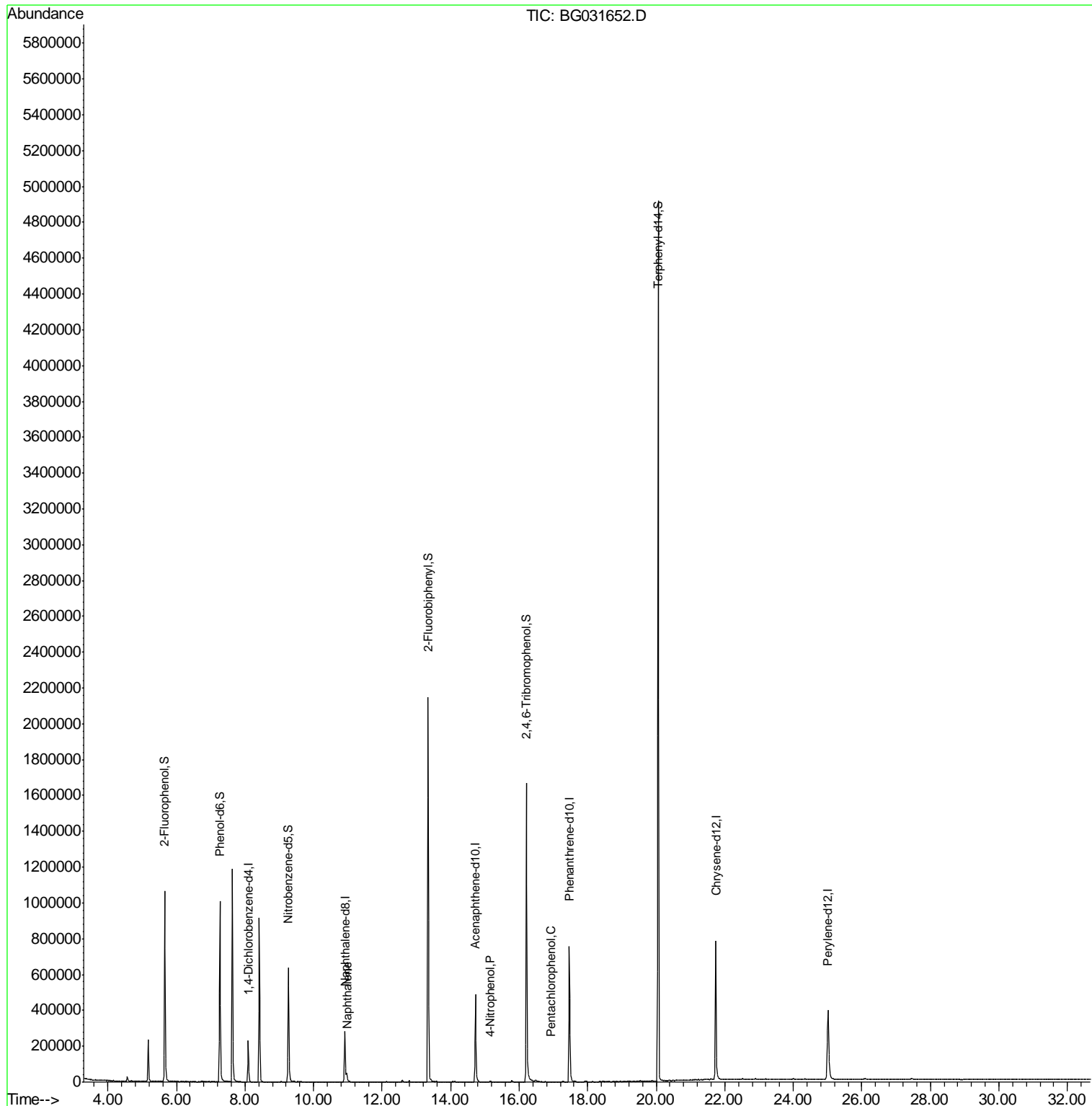
Internal Standards	R.T.	QIon	Response	Conc	Units	Dev(Min)
1) 1,4-Dichlorobenzene-d4	8.10	152	73722	20.00	ng	0.00
21) Naphthalene-d8	10.91	136	315016	20.00	ng	0.00
38) Acenaphthene-d10	14.72	164	206916	20.00	ng	-0.01
63) Phenanthrene-d10	17.47	188	548958	20.00	ng	-0.01
75) Chrysene-d12	21.74	240	571917	20.00	ng	-0.01
86) Perylene-d12	25.02	264	500969	20.00	ng	-0.02
System Monitoring Compounds						
5) 2-Fluorophenol	5.66	112	556779	133.87	ng	0.00
7) Phenol-d6	7.27	99	662067	114.67	ng	0.00
23) Nitrobenzene-d5	9.27	82	446468	87.36	ng	0.00
41) 2,4,6-Tribromophenol	16.21	330	385473	159.02	ng	-0.01
44) 2-Fluorobiphenyl	13.35	172	1332041	94.50	ng	0.00
78) Terphenyl-d14	20.06	244	2378187	94.61	ng	-0.01
Target Compounds						
31) Naphthalene	10.97	128	38620	2.495	ng	98
55) 4-Nitrophenol	15.15	139	1796	4.223	ng	# 1
69) Pentachlorophenol	16.94	266	55	5.678	ng	# 19

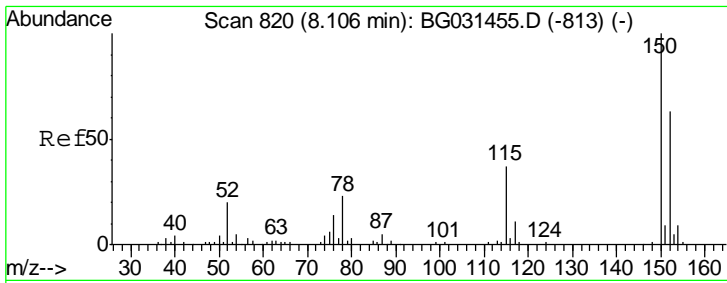
(#) = qualifier out of range (m) = manual integration (+) = signals summed

Data Path : Z:\HPCHEM1\BNA G\DATA\BG121817\
 Data File : BG031652.D
 Acq On : 19 Dec 2017 2:29
 Operator : SJ/JU
 Sample : I6677-06
 Misc :
 ALS Vial : 17 Sample Multiplier: 1

Instrument :
 BNA_G
 ClientSampleId :

Quant Time: Dec 19 07:07:47 2017
 Quant Method : Z:\HPCHEM1\BNA G\METHODS\8270-BG121117.M
 Quant Title : ASP BNA STANDARDS FOR 5 POINT CALIBRATION
 QLast Update : Mon Dec 11 17:25:55 2017
 Response via : Initial Calibration

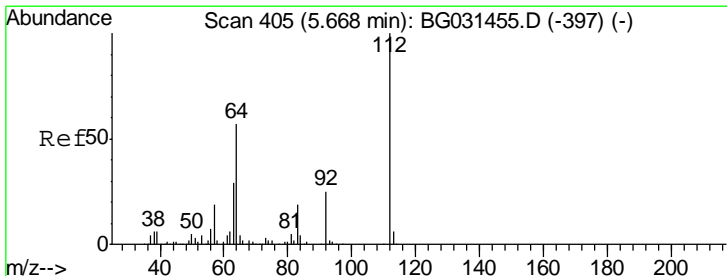
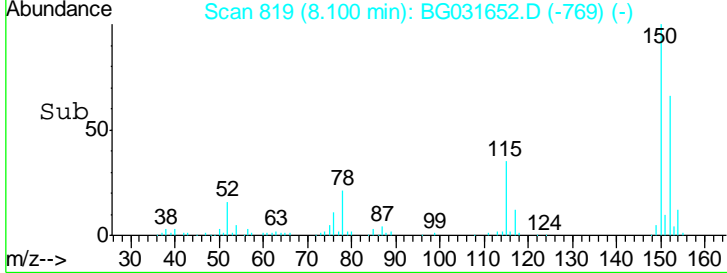
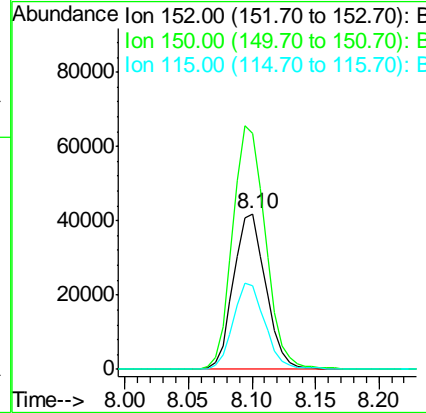
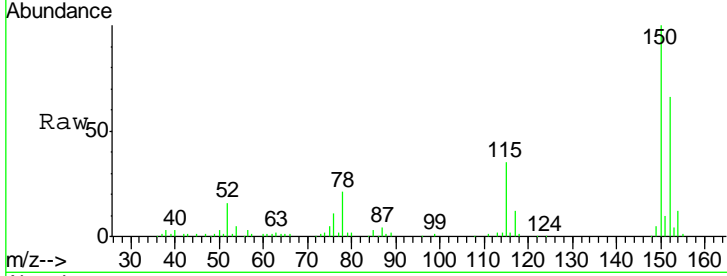




#1
 1,4-Dichlorobenzene-d4
 Concen: 20.000 ng
 RT: 8.10 min Scan# 819
 Delta R.T. -0.01 min
 Lab File: BG031652.D
 Acq: 19 Dec 2017 2:29

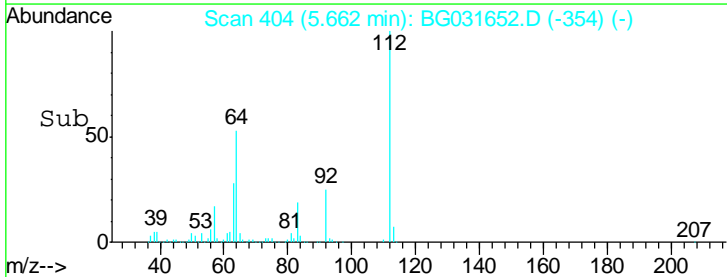
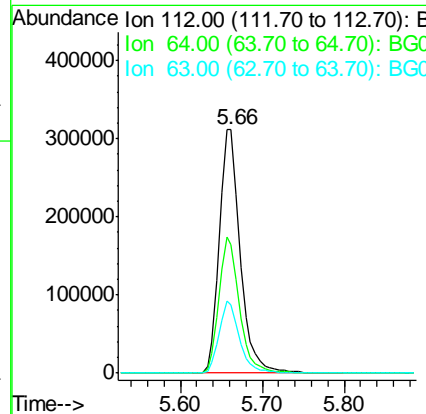
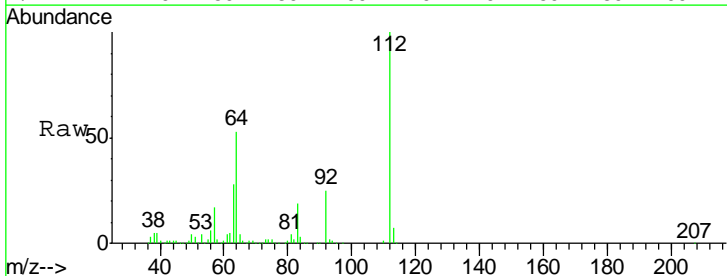
Instrument :
 BNA_G
 ClientSampled :

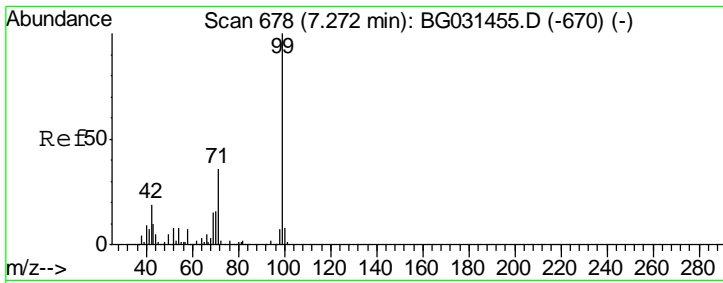
Tgt Ion	Resp	Lower	Upper
152	100		
150	152.2	126.6	189.8
115	53.9	53.0	79.4



#5
 2-Fluorophenol
 Concen: 133.868 ng
 RT: 5.66 min Scan# 404
 Delta R.T. -0.00 min
 Lab File: BG031652.D
 Acq: 19 Dec 2017 2:29

Tgt Ion	Resp	Lower	Upper
112	100		
64	52.7	56.3	84.5#
63	28.1	30.1	45.1#

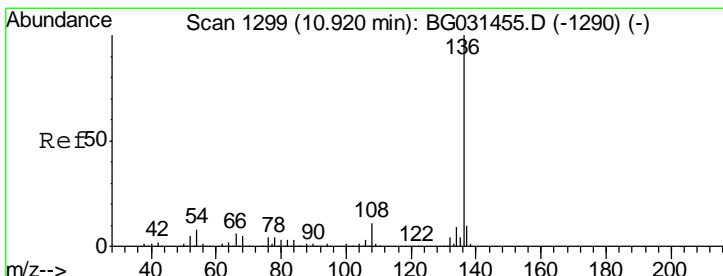
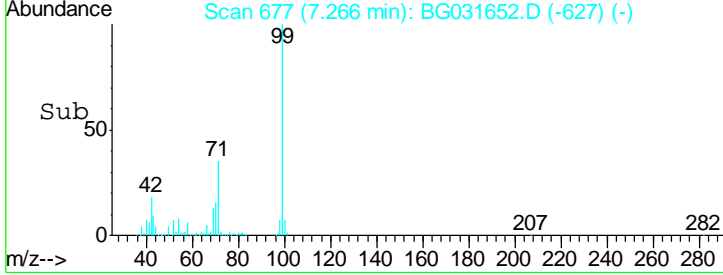
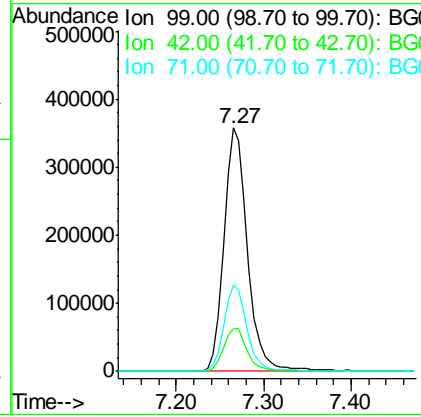
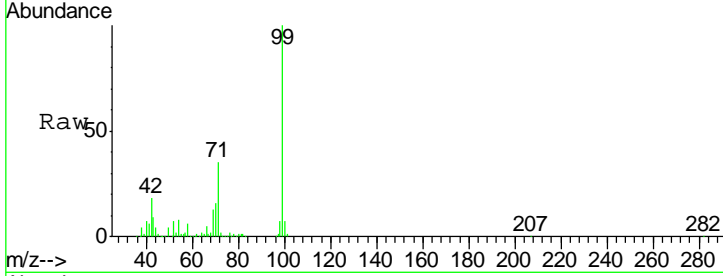




#7
 Phenol-d6
 Concen: 114.666 ng
 RT: 7.27 min Scan# 677
 Delta R.T. -0.01 min
 Lab File: BG031652.D
 Acq: 19 Dec 2017 2:29

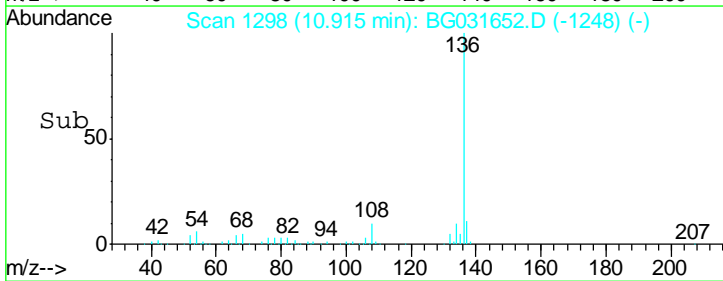
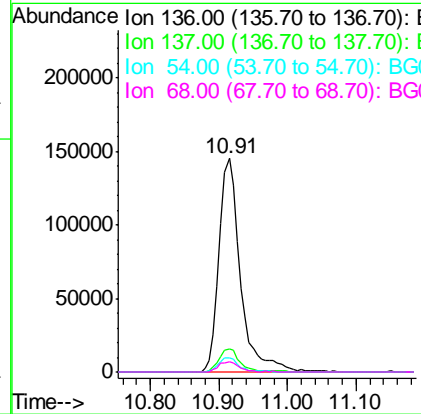
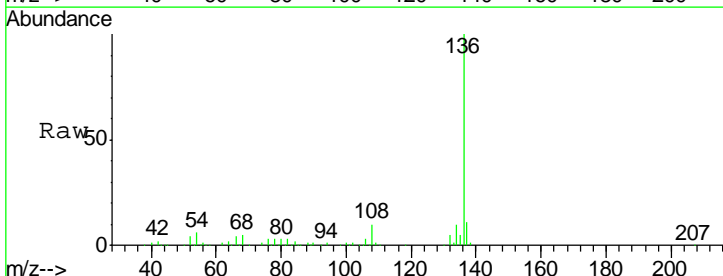
Instrument :
 BNA_G
 ClientSampled :

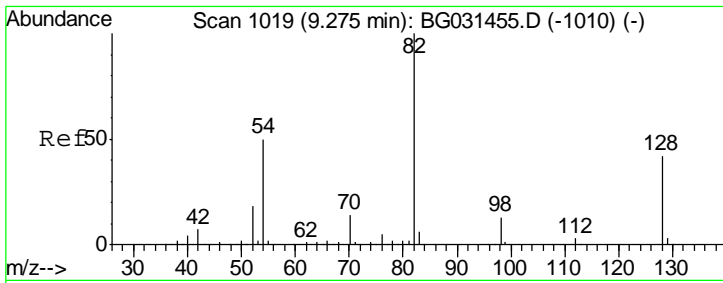
Tgt Ion	Resp	Lower	Upper
99	100		
42	17.7	14.1	21.1
71	35.4	26.1	39.1



#21
 Naphthalene-d8
 Concen: 20.000 ng
 RT: 10.91 min Scan# 1298
 Delta R.T. -0.01 min
 Lab File: BG031652.D
 Acq: 19 Dec 2017 2:29

Tgt Ion	Resp	Lower	Upper
136	100		
137	10.7	9.2	13.8
54	6.4	10.3	15.5#
68	4.9	4.5	6.7

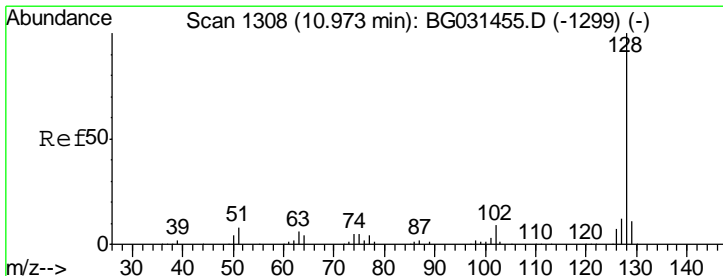
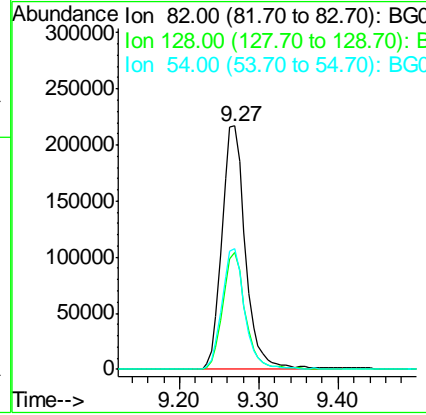
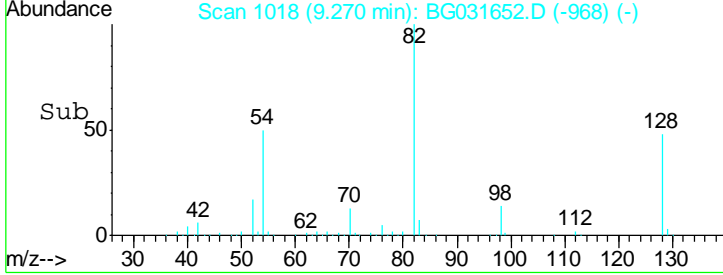
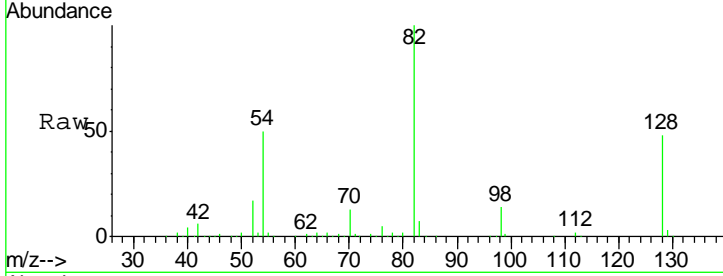




#23
 Nitrobenzene-d5
 Concen: 87.357 ng
 RT: 9.27 min Scan# 1018
 Delta R.T. -0.01 min
 Lab File: BG031652.D
 Acq: 19 Dec 2017 2:29

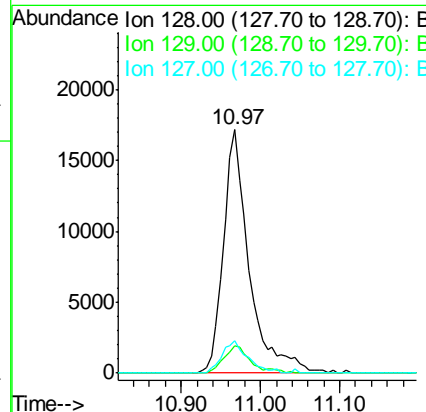
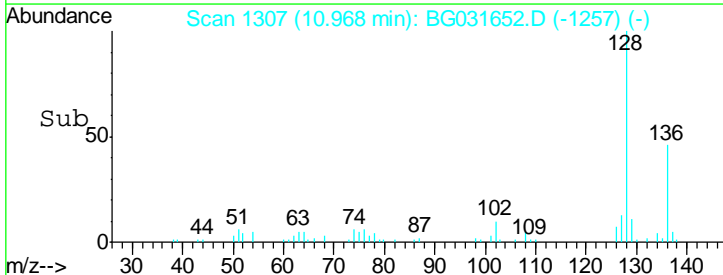
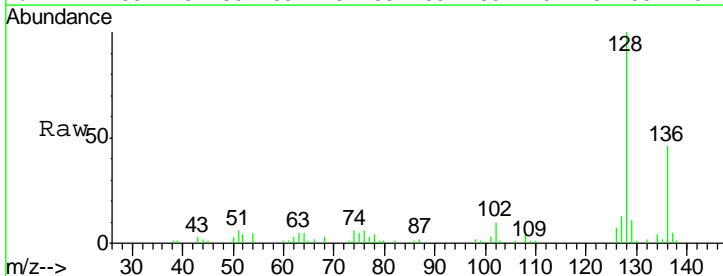
Instrument :
 BNA_G
 ClientSampled :

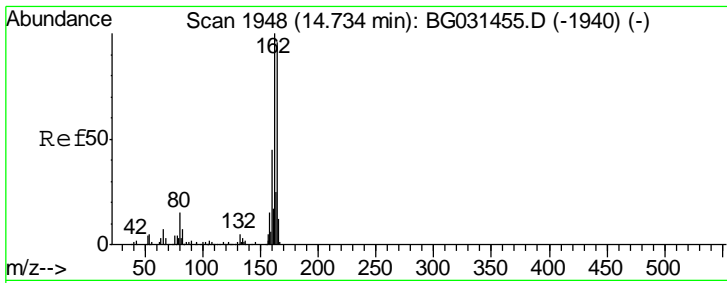
Tgt Ion	Resp	Lower	Upper
82	446468		
128	48.0	29.7	44.5#
54	49.7	43.1	64.7



#31
 Naphthalene
 Concen: 2.495 ng
 RT: 10.97 min Scan# 1307
 Delta R.T. -0.01 min
 Lab File: BG031652.D
 Acq: 19 Dec 2017 2:29

Tgt Ion	Resp	Lower	Upper
128	38620		
129	11.1	8.6	12.8
127	13.4	11.6	17.4

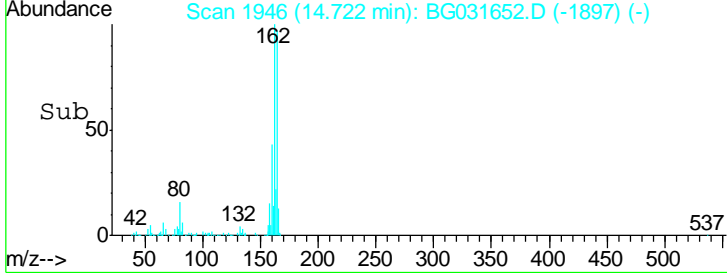
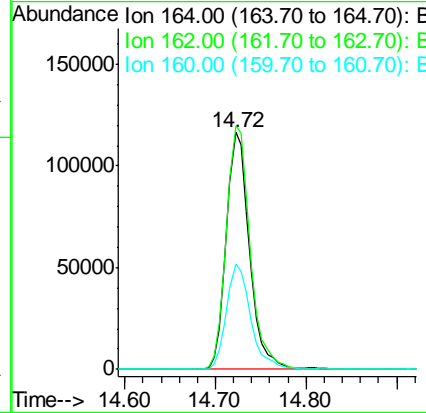
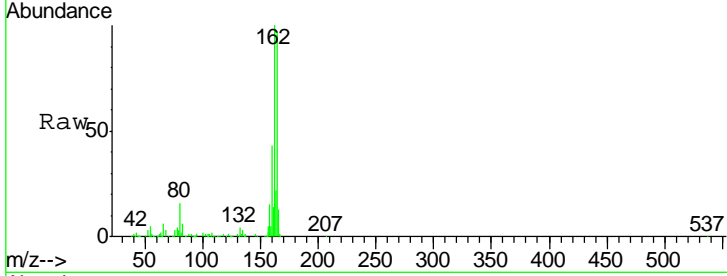




#38
 Acenaphthene-d10
 Concen: 20.000 ng
 RT: 14.72 min Scan# 1946
 Delta R.T. -0.01 min
 Lab File: BG031652.D
 Acq: 19 Dec 2017 2:29

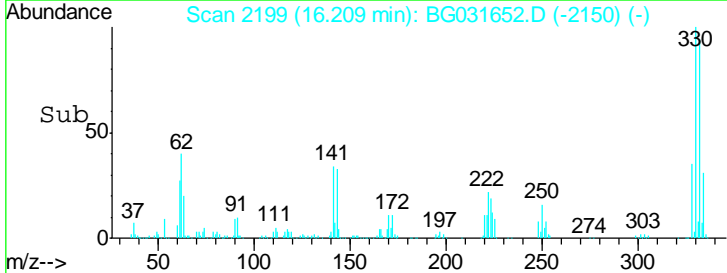
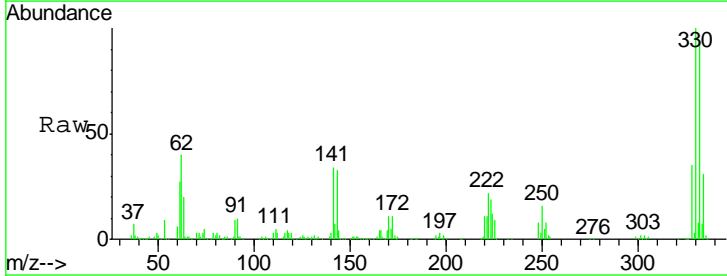
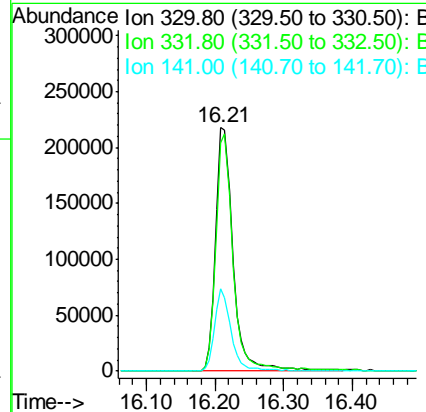
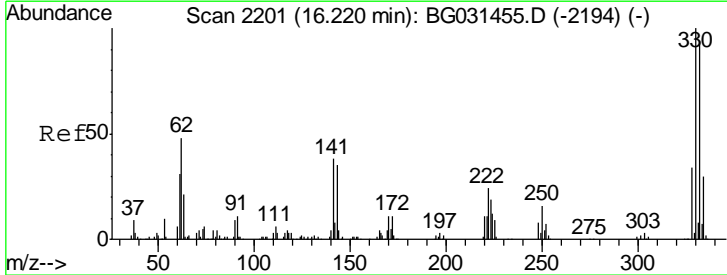
Instrument :
 BNA_G
 ClientSampled :

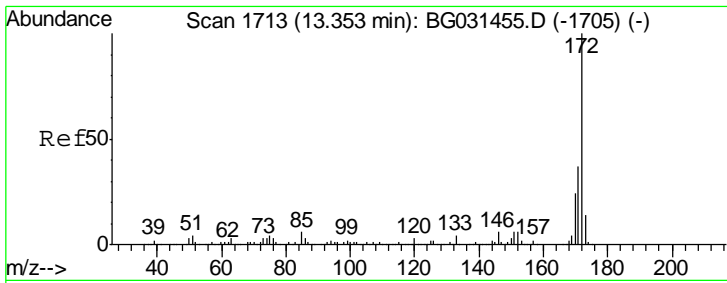
Tgt Ion	Resp	Lower	Upper
164	100		
162	102.9	78.8	118.2
160	44.4	35.4	53.0



#41
 2,4,6-Tribromophenol
 Concen: 159.016 ng
 RT: 16.21 min Scan# 2199
 Delta R.T. -0.01 min
 Lab File: BG031652.D
 Acq: 19 Dec 2017 2:29

Tgt Ion	Resp	Lower	Upper
330	100		
332	95.3	77.0	115.6
141	32.0	25.2	37.8

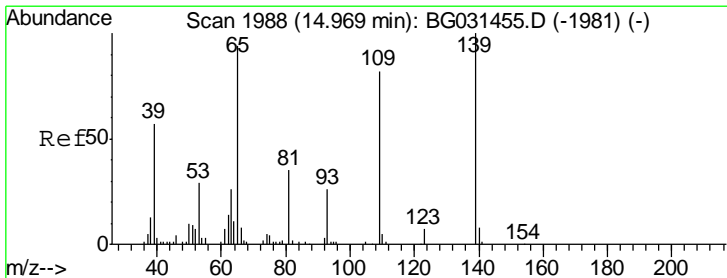
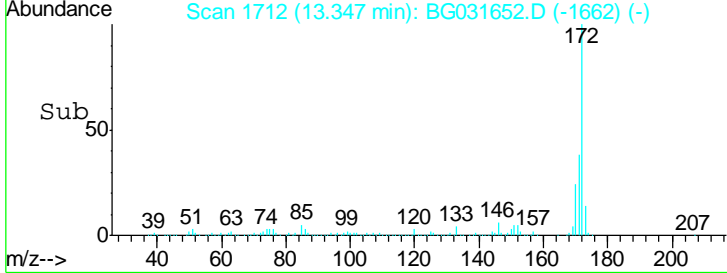
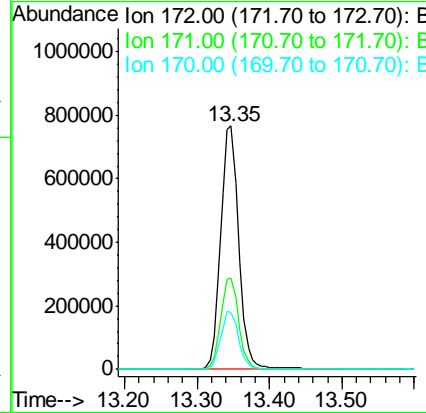
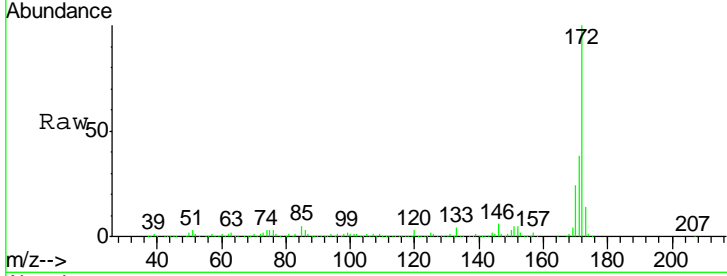




#44
 2-Fluorobiphenyl
 Concen: 94.495 ng
 RT: 13.35 min Scan# 1712
 Delta R.T. -0.01 min
 Lab File: BG031652.D
 Acq: 19 Dec 2017 2:29

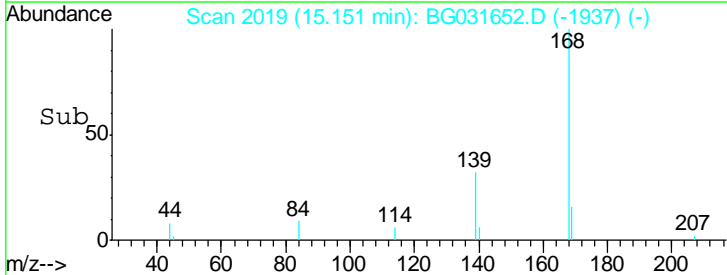
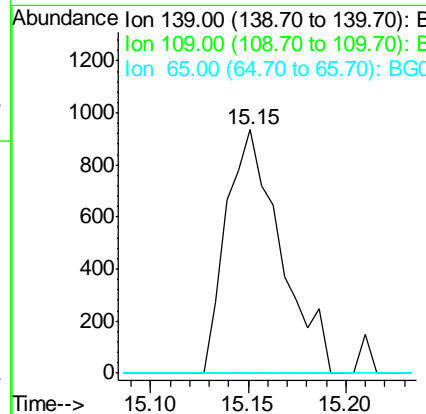
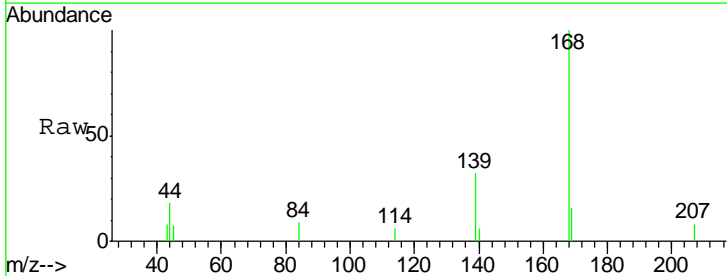
Instrument :
 BNA_G
 ClientSampled :

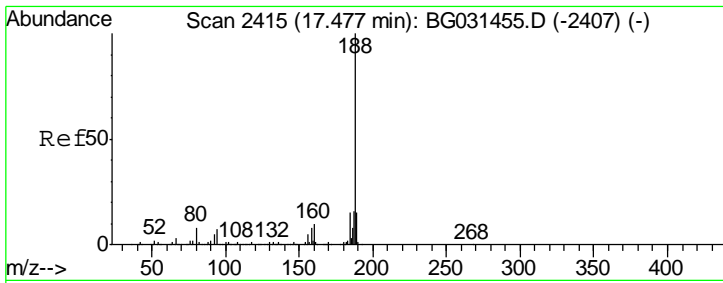
Tgt Ion	Resp	Lower	Upper
172	100		
171	37.5	30.0	45.0
170	23.6	19.5	29.3



#55
 4-Nitrophenol
 Concen: 4.223 ng
 RT: 15.15 min Scan# 2019
 Delta R.T. 0.18 min
 Lab File: BG031652.D
 Acq: 19 Dec 2017 2:29

Tgt Ion	Resp	Lower	Upper
139	100		
109	0.0	62.2	102.2#
65	0.0	97.2	137.2#

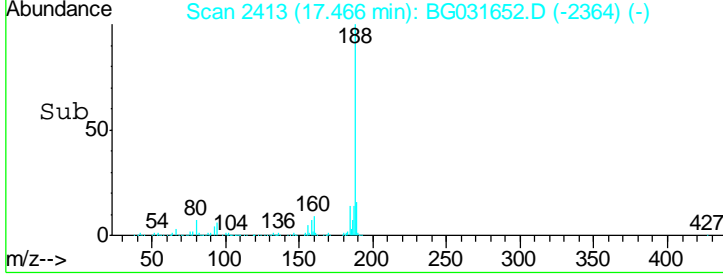
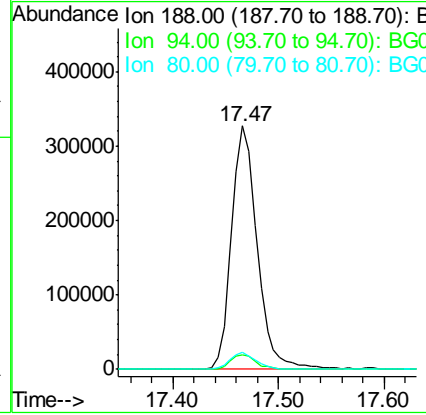
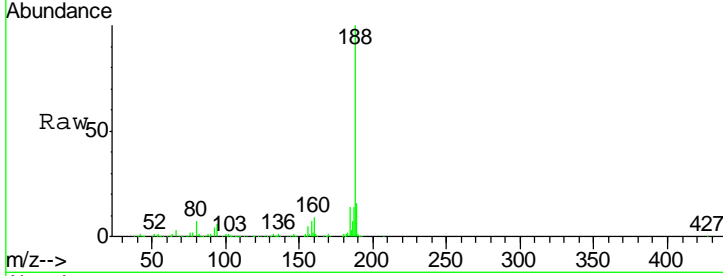




#63
 Phenanthrene-d10
 Concen: 20.000 ng
 RT: 17.47 min Scan# 2413
 Delta R.T. -0.01 min
 Lab File: BG031652.D
 Acq: 19 Dec 2017 2:29

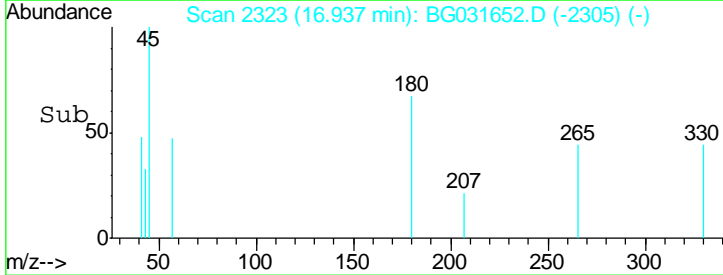
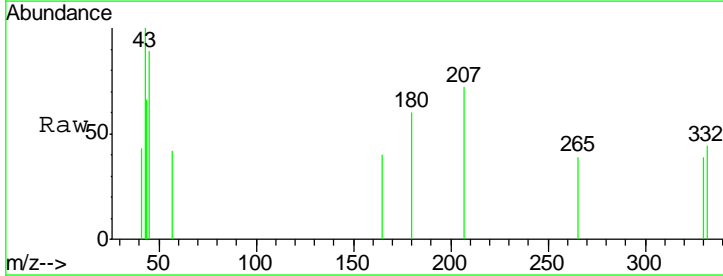
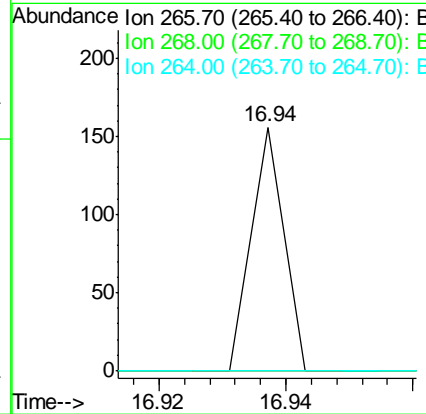
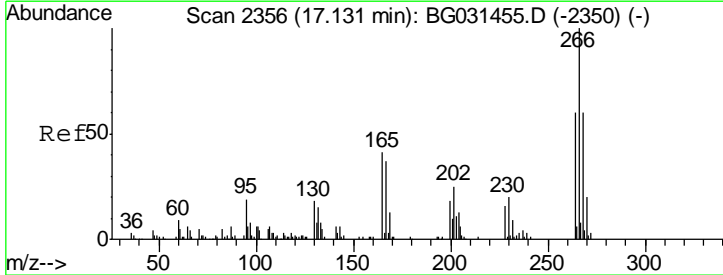
Instrument :
 BNA_G
 ClientSampled :

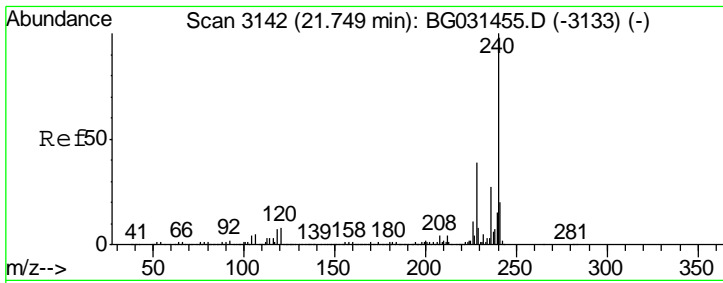
Tgt Ion	Resp	Lower	Upper
188	100		
94	6.1	6.9	10.3#
80	7.2	7.7	11.5#



#69
 Pentachlorophenol
 Concen: 5.678 ng
 RT: 16.94 min Scan# 2323
 Delta R.T. -0.19 min
 Lab File: BG031652.D
 Acq: 19 Dec 2017 2:29

Tgt Ion	Resp	Lower	Upper
266	100		
268	0.0	51.1	76.7#
264	0.0	49.6	74.4#

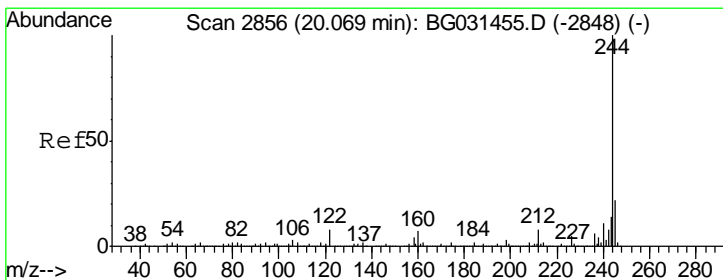
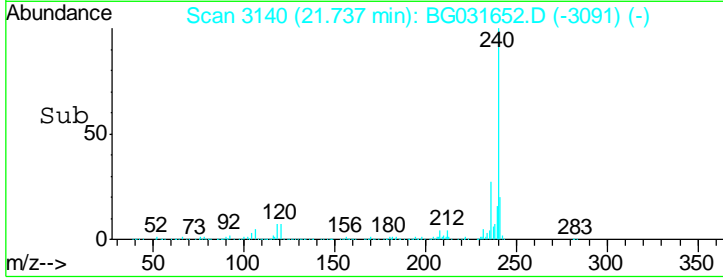
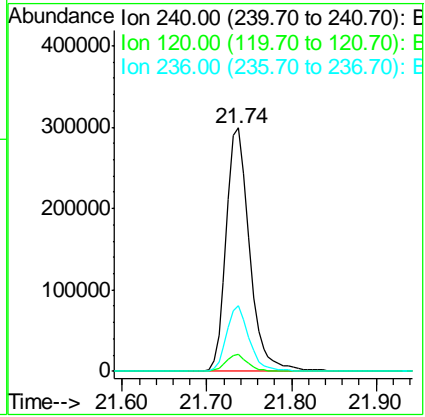
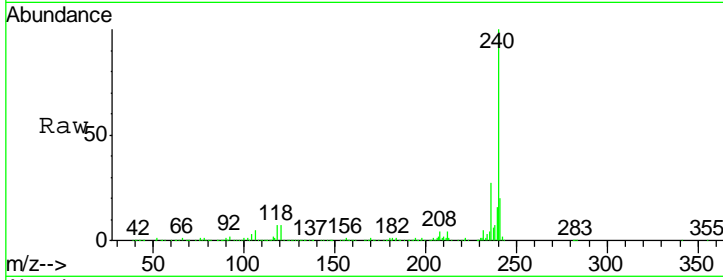




#75
 Chrysene-d12
 Concen: 20.000 ng
 RT: 21.74 min Scan# 3140
 Delta R.T. -0.01 min
 Lab File: BG031652.D
 Acq: 19 Dec 2017 2:29

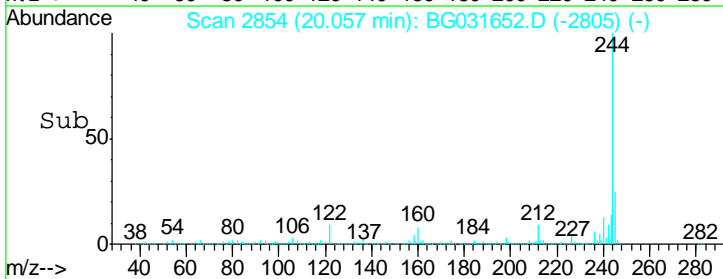
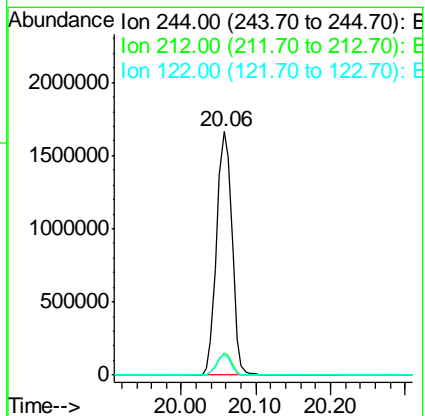
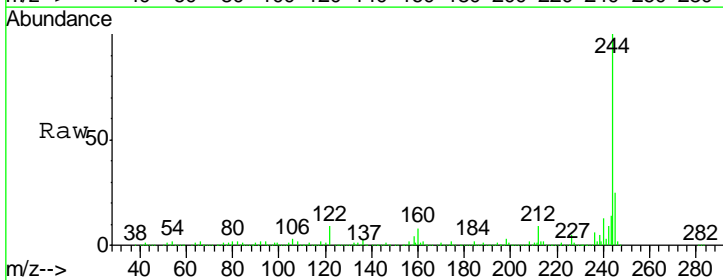
Instrument :
 BNA_G
 ClientSampled :

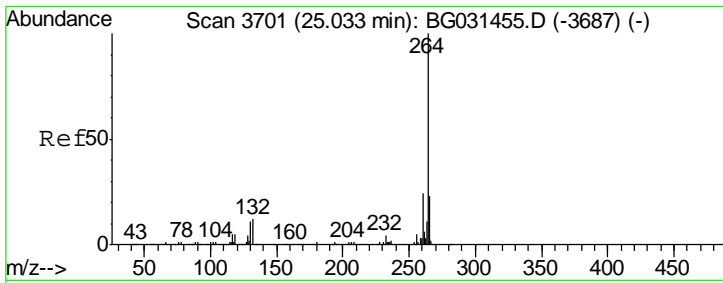
Tgt Ion	Resp	Lower	Upper
240	571917		
120	7.1	6.8	10.2
236	26.8	20.9	31.3



#78
 Terphenyl-d14
 Concen: 94.608 ng
 RT: 20.06 min Scan# 2854
 Delta R.T. -0.01 min
 Lab File: BG031652.D
 Acq: 19 Dec 2017 2:29

Tgt Ion	Resp	Lower	Upper
244	2378187		
212	9.1	5.8	8.8#
122	8.8	7.0	10.4





#86
 Perylene-d12
 Concen: 20.000 ng
 RT: 25.02 min Scan# 3698
 Delta R.T. -0.02 min
 Lab File: BG031652.D
 Acq: 19 Dec 2017 2:29

Instrument :
 BNA_G
 ClientSampled :

Tot Ion: 264 Resp: 500969

Ion	Ratio	Lower	Upper
264	100		
260	23.3	17.4	26.0
265	21.7	17.7	26.5

