

Data Path : Z:\HPCHEM1\BNA G\DATA\BG121915\  
 Data File : BG020283.D  
 Acq On : 18 Dec 2015 20:13  
 Operator : UM/SJ  
 Sample : G4768-04  
 Misc :  
 ALS Vial : 16 Sample Multiplier: 1

Instrument :  
 BNA\_G  
 ClientSampleId :  
 D9N28

## Integration Parameters: LSCINT.P

Integrator: RTE  
 Smoothing : OFF Filtering: 5  
 Sampling : 1 Min Area: 0.1 % of largest Peak  
 Start Thrs: 0.2 Max Peaks: 100  
 Stop Thrs : 0 Peak Location: TOP

If leading or trailing edge < 100 prefer < Baseline drop else tangent >  
 Peak separation: 5

Method : Z:\HPCHEM1\BNA G\METHODS\SOM02.2-EPA-BG121415.M  
 Title : SVOA CALIBRATION

Signal : TIC

peak #	R.T. min	first scan	max scan	last scan	PK TY	peak height	corr. area	corr. % max.	% of total
1	3.116	42	47	56	rBV	40225	76030	1.69%	0.302%
2	3.192	56	60	70	rVB	23037	35402	0.79%	0.141%
3	5.707	483	488	498	rBV	10099	19853	0.44%	0.079%
4	7.241	743	749	755	rBV2	20938	36538	0.81%	0.145%
5	7.411	771	778	786	rBV	52278	84769	1.88%	0.337%
6	7.622	807	814	822	rBV	56426	96469	2.14%	0.383%
7	7.734	826	833	839	rBV	19146	29071	0.65%	0.115%
8	7.810	839	846	853	rVB	10166	15656	0.35%	0.062%
9	8.092	888	894	900	rBV2	57036	94803	2.11%	0.376%
10	8.469	952	958	965	rBB	49332	80278	1.78%	0.319%
11	8.633	980	986	994	rVB	144432	243627	5.42%	0.967%
12	8.792	1007	1013	1022	rBB2	55375	91225	2.03%	0.362%
13	9.256	1086	1092	1101	rVV	68088	124607	2.77%	0.495%
14	9.579	1141	1147	1152	rVB2	13389	26203	0.58%	0.104%
15	9.984	1209	1216	1223	rBV	60998	102970	2.29%	0.409%
16	10.302	1264	1270	1281	rVB5	17162	48421	1.08%	0.192%
17	10.407	1281	1288	1292	rBV4	10871	23340	0.52%	0.093%
18	10.525	1300	1308	1318	rBB2	98980	183071	4.07%	0.727%
19	10.913	1366	1374	1377	rVV	76240	149386	3.32%	0.593%
20	10.977	1377	1385	1392	rVV	2283918	4498689	100.00%	17.861%
21	11.083	1395	1403	1411	rVB	118050	207338	4.61%	0.823%
22	12.458	1631	1637	1645	rVB	15706	27994	0.62%	0.111%
23	12.564	1647	1655	1661	rBV	610839	1002625	22.29%	3.981%
24	12.675	1667	1674	1680	rBV	20620	35403	0.79%	0.141%
25	12.781	1680	1692	1703	rVB	421553	711367	15.81%	2.824%
26	13.198	1757	1763	1771	rBB3	9953	17311	0.38%	0.069%
27	13.557	1817	1824	1832	rVB	213185	329017	7.31%	1.306%
28	13.756	1850	1858	1869	rVB2	38688	78544	1.75%	0.312%
29	13.903	1872	1883	1890	rVB3	36331	96860	2.15%	0.385%
30	14.044	1900	1907	1912	rBV	77136	138531	3.08%	0.550%
31	14.127	1912	1921	1926	rVB	212844	362936	8.07%	1.441%
32	14.279	1942	1947	1951	rBV2	31100	50663	1.13%	0.201%
33	14.420	1964	1971	1985	rBV2	228311	496731	11.04%	1.972%
34	14.697	2012	2018	2019	rBV	43115	58529	1.30%	0.232%

Data Path : Z:\HPCHEM1\BNA G\DATA\BG121915\  
 Data File : BG020283.D  
 Acq On : 18 Dec 2015 20:13  
 Operator : UM/SJ  
 Sample : G4768-04  
 Misc :  
 ALS Vial : 16 Sample Multiplier: 1

Instrument :  
 BNA\_G  
 ClientSampleId :  
 D9N28

## Integration Parameters: LSCINT.P

Integrator: RTE  
 Smoothing : OFF  
 Sampling : 1  
 Start Thrs: 0.2  
 Stop Thrs : 0

Filtering: 5  
 Min Area: 0.1 % of largest Peak  
 Max Peaks: 100  
 Peak Location: TOP

If leading or trailing edge < 100 prefer < Baseline drop else tangent >  
 Peak separation: 5

Method : Z:\HPCHEM1\BNA G\METHODS\SOM02.2-EPA-BG121415.M  
 Title : SVOA CALIBRATION

35	14.726	2019	2023	2028	rVV2	154463	249923	5.56%	0.992%
36	14.796	2028	2035	2040	rVV	1340534	2139604	47.56%	8.495%
37	14.855	2040	2045	2050	rVV	233371	353156	7.85%	1.402%
38	14.908	2050	2054	2064	rVV5	30954	61690	1.37%	0.245%
39	14.996	2064	2069	2072	rVV3	30782	49699	1.10%	0.197%
40	15.031	2072	2075	2080	rVV	26964	43328	0.96%	0.172%
41	15.125	2084	2091	2099	rVV2	630029	1041544	23.15%	4.135%
42	15.196	2099	2103	2109	rVB2	17465	28017	0.62%	0.111%
43	15.325	2120	2125	2131	rBV3	8905	17257	0.38%	0.069%
44	15.507	2148	2156	2161	rBV4	8436	16889	0.38%	0.067%
45	15.713	2181	2191	2196	rVV	292550	476804	10.60%	1.893%
46	15.772	2196	2201	2206	rVV	778608	1167637	25.96%	4.636%
47	15.825	2206	2210	2214	rVV	79186	123138	2.74%	0.489%
48	15.860	2214	2216	2218	rVV2	22004	28883	0.64%	0.115%
49	15.895	2218	2222	2225	rVV2	45419	85651	1.90%	0.340%
50	15.930	2225	2228	2233	rVV2	63531	105046	2.34%	0.417%
51	15.983	2233	2237	2240	rVV4	23923	43389	0.96%	0.172%
52	16.019	2240	2243	2246	rVV2	28678	40867	0.91%	0.162%
53	16.060	2246	2250	2259	rVV	53422	79610	1.77%	0.316%
54	16.206	2260	2275	2283	rVV4	66033	166450	3.70%	0.661%
55	16.436	2305	2314	2322	rVB6	19034	37414	0.83%	0.149%
56	16.565	2329	2336	2342	rBV3	54593	111667	2.48%	0.443%
57	16.641	2346	2349	2358	rVV	17476	28949	0.64%	0.115%
58	16.724	2358	2363	2367	rVV3	28279	58696	1.30%	0.233%
59	16.771	2367	2371	2375	rVV	29815	54036	1.20%	0.215%
60	16.823	2375	2380	2386	rVV5	14724	29080	0.65%	0.115%
61	16.923	2390	2397	2400	rVV3	16861	31302	0.70%	0.124%
62	16.947	2400	2401	2408	rVV4	9448	18662	0.41%	0.074%
63	17.123	2426	2431	2437	rVB	29230	47000	1.04%	0.187%
64	17.246	2446	2452	2455	rVV2	14957	26974	0.60%	0.107%
65	17.288	2455	2459	2466	rVB	110278	158983	3.53%	0.631%
66	17.411	2477	2480	2484	rVV2	10149	16370	0.36%	0.065%
67	17.470	2484	2490	2493	rVV	213862	347599	7.73%	1.380%
68	17.517	2493	2498	2503	rVV	1346970	2099547	46.67%	8.336%
69	17.570	2503	2507	2511	rVV2	395464	619684	13.77%	2.460%
70	17.605	2511	2513	2518	rVV	80169	93069	2.07%	0.370%
71	17.664	2518	2523	2533	rVB6	18180	38176	0.85%	0.152%

Data Path : Z:\HPCHEM1\BNA G\DATA\BG121915\  
 Data File : BG020283.D  
 Acq On : 18 Dec 2015 20:13  
 Operator : UM/SJ  
 Sample : G4768-04  
 Misc :  
 ALS Vial : 16 Sample Multiplier: 1

Instrument :  
 BNA\_G  
 ClientSampleId :  
 D9N28

## Integration Parameters: LSCINT.P

Integrator: RTE  
 Smoothing : OFF  
 Sampling : 1  
 Start Thrs: 0.2  
 Stop Thrs : 0

Filtering: 5  
 Min Area: 0.1 % of largest Peak  
 Max Peaks: 100  
 Peak Location: TOP

If leading or trailing edge < 100 prefer < Baseline drop else tangent >  
 Peak separation: 5

Method : Z:\HPCHEM1\BNA G\METHODS\SOM02.2-EPA-BG121415.M  
 Title : SVOA CALIBRATION

72	17.875	2553	2559	2565	rVB	765147	1172653	26.07%	4.656%
73	17.963	2568	2574	2581	rVV5	31625	84763	1.88%	0.337%
74	18.028	2581	2585	2591	rVV	33862	58577	1.30%	0.233%
75	18.116	2591	2600	2605	rVV6	12179	34167	0.76%	0.136%
76	18.216	2613	2617	2621	rVB4	11038	16216	0.36%	0.064%
77	18.298	2626	2631	2635	rVV	23935	38342	0.85%	0.152%
78	18.345	2635	2639	2642	rVV	38648	55240	1.23%	0.219%
79	18.386	2642	2646	2653	rVV2	145717	227497	5.06%	0.903%
80	18.457	2653	2658	2665	rVV2	42640	75035	1.67%	0.298%
81	18.539	2665	2672	2681	rVV2	111304	207807	4.62%	0.825%
82	18.639	2681	2689	2693	rVV2	49592	90101	2.00%	0.358%
83	18.680	2693	2696	2700	rVV	62630	87059	1.94%	0.346%
84	18.715	2700	2702	2706	rVV3	11304	15693	0.35%	0.062%
85	18.774	2706	2712	2718	rVV	60520	99169	2.20%	0.394%
86	18.833	2718	2722	2726	rVV2	27749	44349	0.99%	0.176%
87	18.880	2726	2730	2734	rVV2	30795	46387	1.03%	0.184%
88	19.356	2807	2811	2815	rVV5	7471	16083	0.36%	0.064%
89	19.514	2832	2838	2844	rVB	285245	419863	9.33%	1.667%
90	19.720	2866	2873	2875	rBV4	8744	16644	0.37%	0.066%
91	19.761	2876	2880	2887	rVV3	10047	21459	0.48%	0.085%
92	19.849	2887	2895	2898	rVV	445454	681439	15.15%	2.706%
93	19.879	2898	2900	2907	rVV	195648	245530	5.46%	0.975%
94	20.255	2959	2964	2968	rVV	76070	108546	2.41%	0.431%
95	20.308	2968	2973	2980	rVV	32271	53655	1.19%	0.213%
96	20.372	2980	2984	2988	rVB	11272	15896	0.35%	0.063%
97	20.466	2993	3000	3005	rVV2	16441	28935	0.64%	0.115%
98	21.741	3209	3217	3224	rBV	271329	476674	10.60%	1.893%
99	24.796	3725	3737	3750	rBV	194105	549346	12.21%	2.181%
100	25.014	3764	3774	3789	rBV	135816	389743	8.66%	1.547%

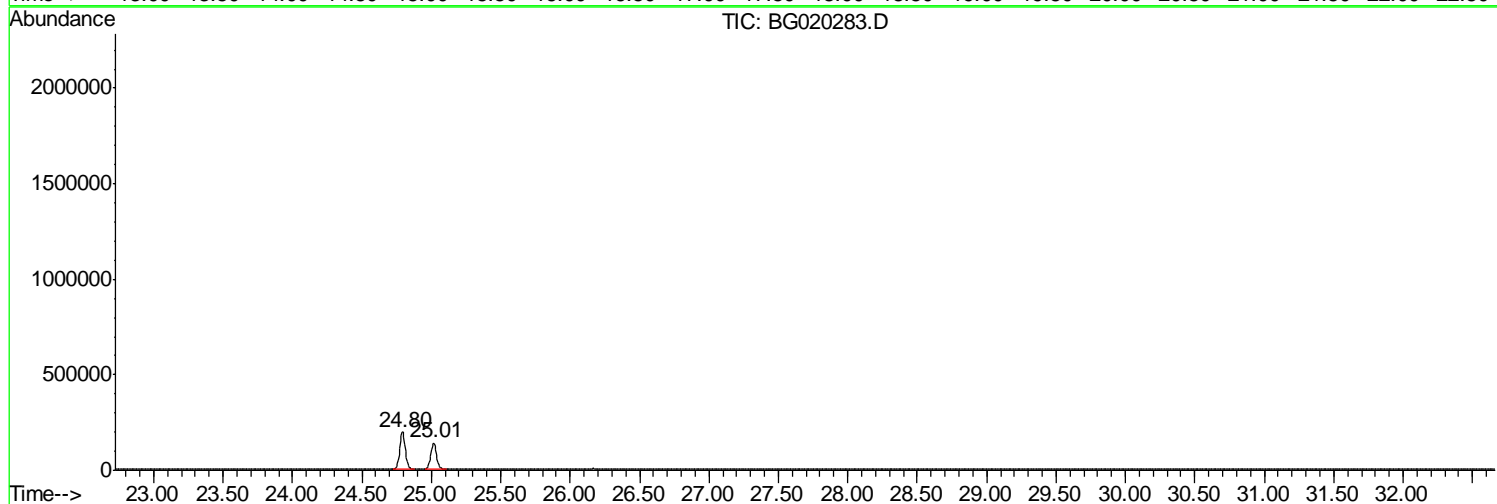
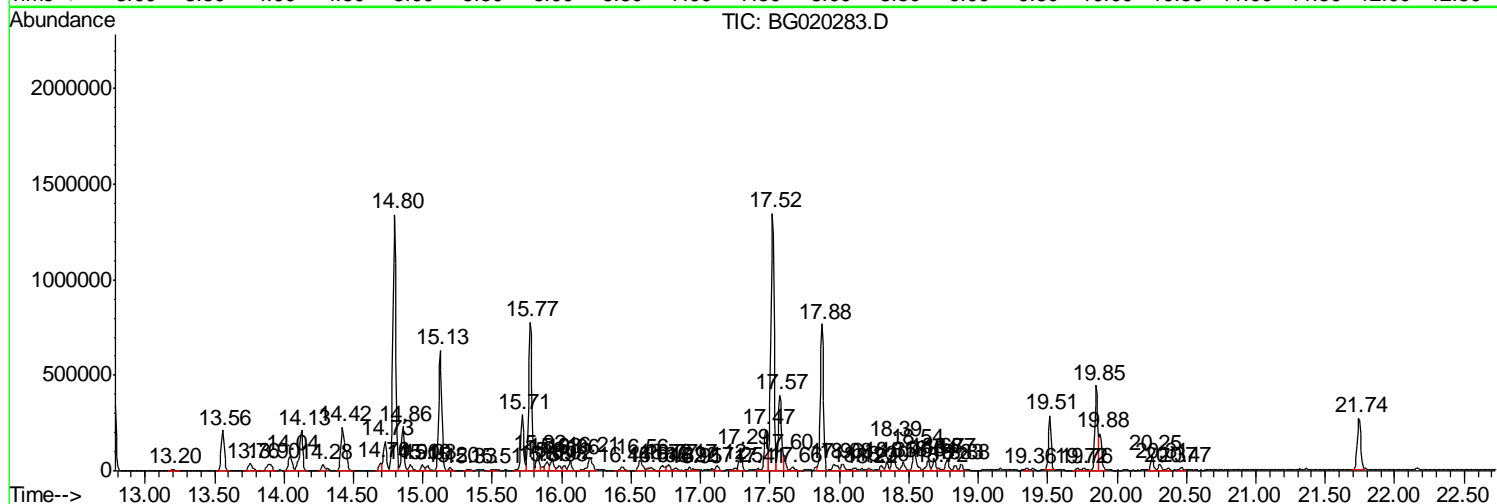
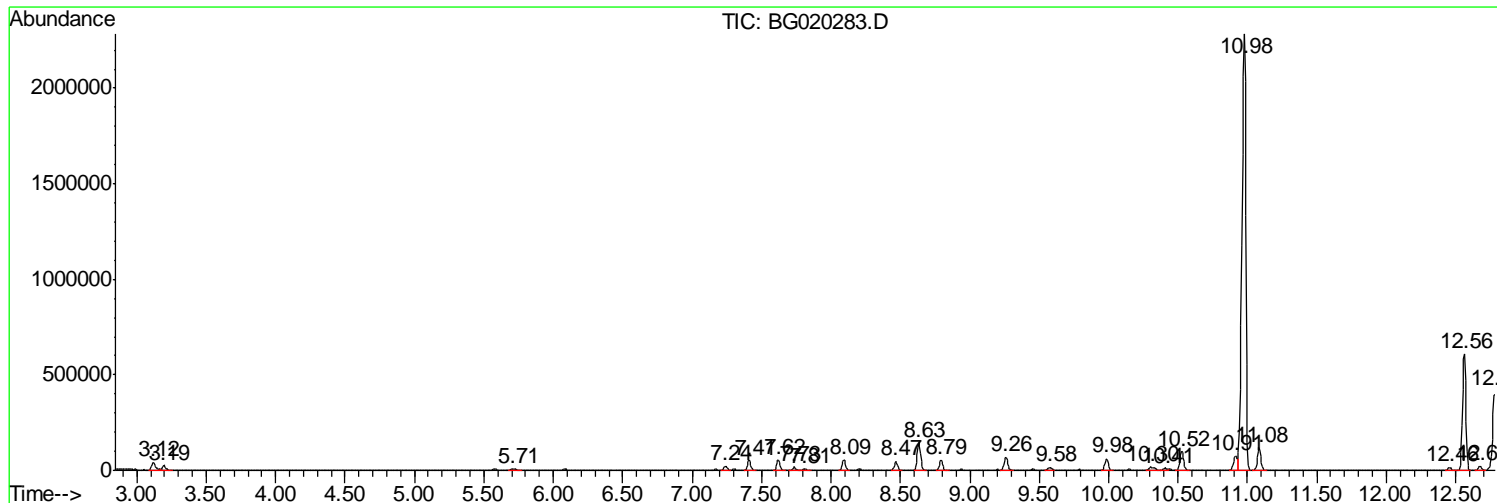
Sum of corrected areas: 25186915

Data Path : Z:\HPCHEM1\BNA G\DATA\BG121915\  
 Data File : BG020283.D  
 Acq On : 18 Dec 2015 20:13  
 Operator : UM/SJ  
 Sample : G4768-04  
 Misc :  
 ALS Vial : 16 Sample Multiplier: 1

Instrument :  
 BNA\_G  
 Client Sampled :  
 D9N28

Quant Method : Z:\HPCHEM1\BNA G\METHODS\SOM02.2-EPA-BG121415.M  
 Quant Title : SVOA CALIBRATION

TIC Library : C:\DATABASE\NIST02.L  
 TIC Integration Parameters: LSCINT.P



Data Path : Z:\HPCHEM1\BNA G\DATA\BG121915\  
 Data File : BG020283.D  
 Acq On : 18 Dec 2015 20:13  
 Operator : UM/SJ  
 Sample : G4768-04  
 Misc :  
 ALS Vial : 16 Sample Multiplier: 1

Instrument :  
 BNA\_G  
 ClientSampled :  
 D9N28

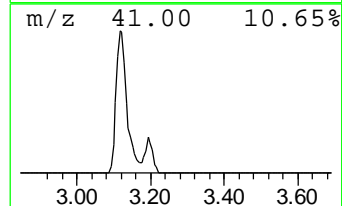
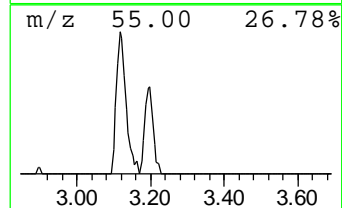
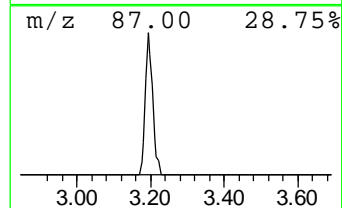
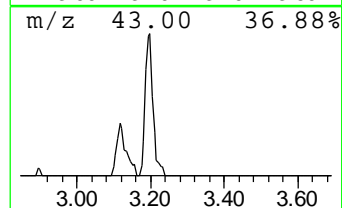
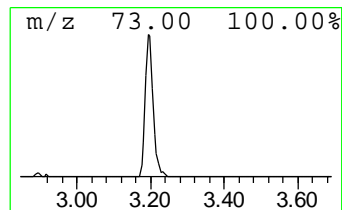
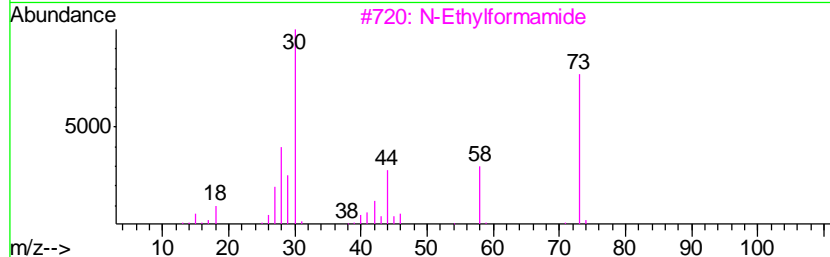
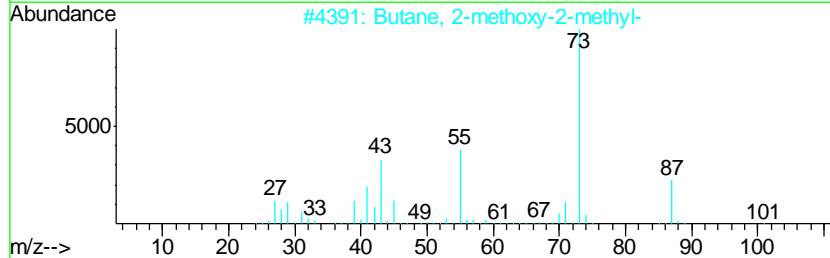
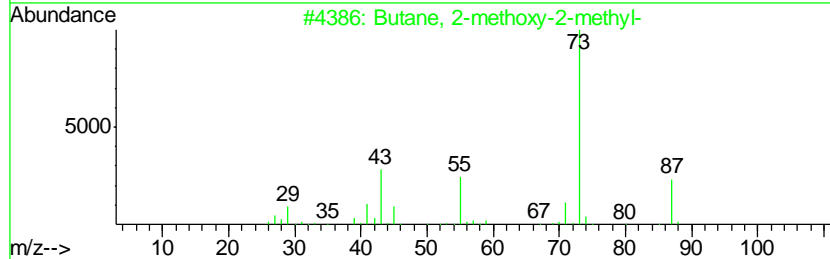
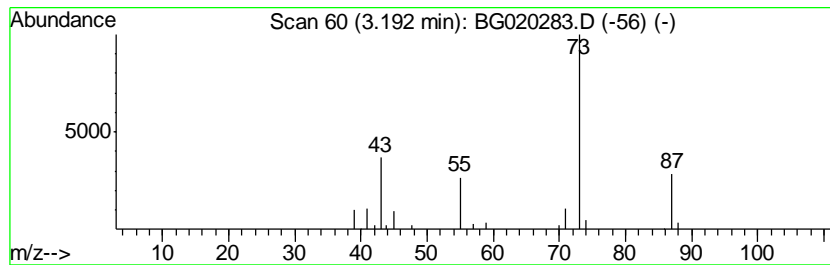
Quant Method : Z:\HPCHEM1\BNA G\METHODS\SOM02.2-EPA-BG121415.M  
 Quant Title : SVOA CALIBRATION

TIC Library : C:\DATABASE\NIST02.L  
 TIC Integration Parameters: LSCINT.P

\*\*\*\*\*  
 Peak Number 2 Butane, 2-methoxy-2-methyl- Concentration Rank 14

R.T.	EstConc	Area	Relative to ISTD	R.T.
3.19	7.47 ng/ul	35402	1,4-Dichlorobenzene-d4	8.09

Hit#	of	Tentative ID	MW	MolForm	CAS#	Qual
1	5	Butane, 2-methoxy-2-methyl-	102	C6H14O	000994-05-8	83
2		Butane, 2-methoxy-2-methyl-	102	C6H14O	000994-05-8	43
3		N-Ethylformamide	73	C3H7NO	000627-45-2	9
4		Silane, ethyltrimethyl-	102	C5H14Si	003439-38-1	9
5		3-Hexanol, 2,4-dimethyl-	130	C8H18O	013432-25-2	9



Data Path : Z:\HPCHEM1\BNA G\DATA\BG121915\  
 Data File : BG020283.D  
 Acq On : 18 Dec 2015 20:13  
 Operator : UM/SJ  
 Sample : G4768-04  
 Misc :  
 ALS Vial : 16 Sample Multiplier: 1

Instrument :  
 BNA\_G  
 ClientSampleID :  
 D9N28

Quant Method : Z:\HPCHEM1\BNA G\METHODS\SOM02.2-EPA-BG121415.M  
 Quant Title : SVOA CALIBRATION

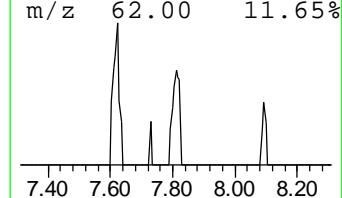
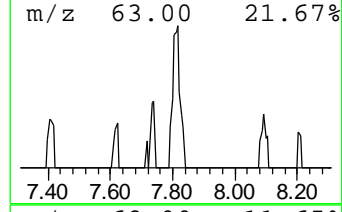
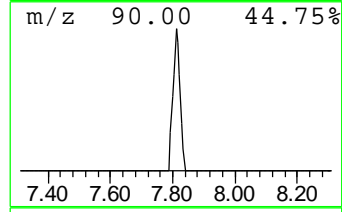
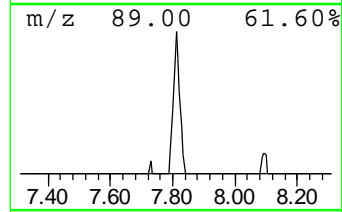
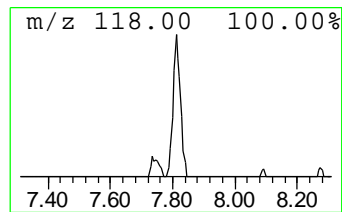
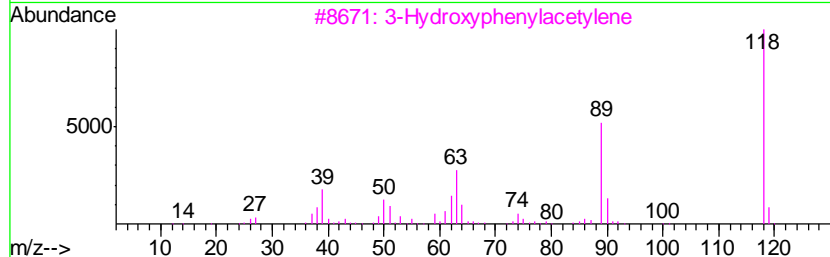
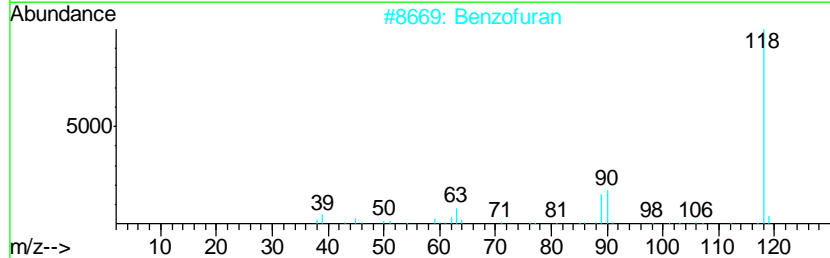
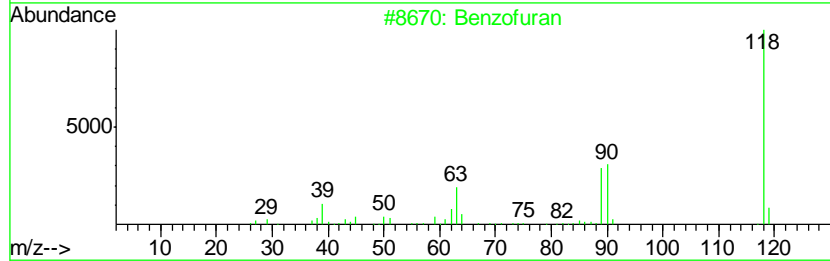
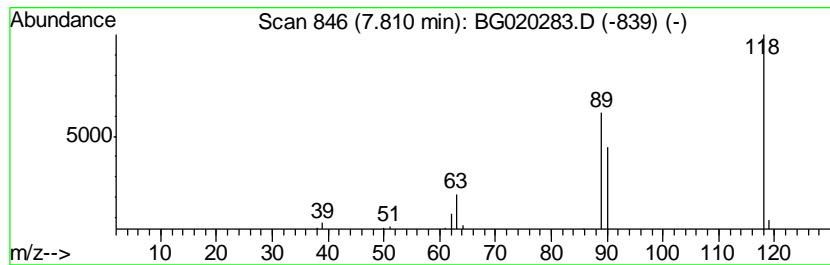
TIC Library : C:\DATABASE\NIST02.L  
 TIC Integration Parameters: LSCINT.P

\*\*\*\*\*  
 Peak Number 5 Benzofuran Concentration Rank 37

R.T.	EstConc	Area	Relative to ISTD	R.T.
7.81	3.30 ng/ul	15656	1,4-Dichlorobenzene-d4	8.09

Hit#	of	Tentative ID	MW	MolForm	CAS#	Qual
1	5	Benzofuran	118	C8H6O	000271-89-6	86
2		Benzofuran	118	C8H6O	000271-89-6	83
3		3-Hydroxyphenylacetylene	118	C8H6O	010401-11-3	80
4		Benzofuran	118	C8H6O	000271-89-6	53
5		1H-Benzimidazole	118	C7H6N2	000051-17-2	50



Data Path : Z:\HPCHEM1\BNA G\DATA\BG121915\  
 Data File : BG020283.D  
 Acq On : 18 Dec 2015 20:13  
 Operator : UM/SJ  
 Sample : G4768-04  
 Misc :  
 ALS Vial : 16 Sample Multiplier: 1

Instrument :  
 BNA\_G  
 ClientSampleID :  
 D9N28

Quant Method : Z:\HPCHEM1\BNA G\METHODS\SOM02.2-EPA-BG121415.M  
 Quant Title : SVOA CALIBRATION

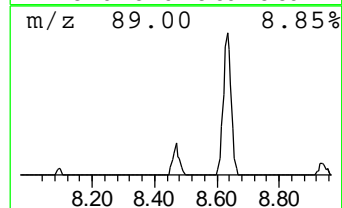
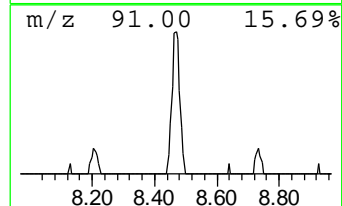
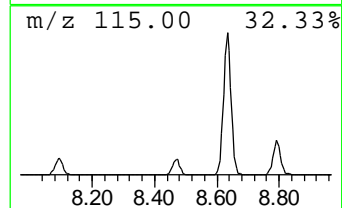
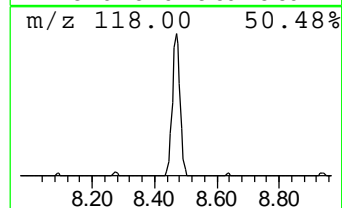
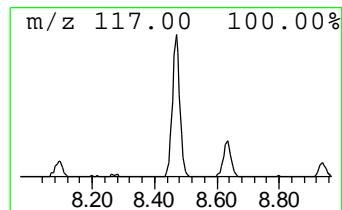
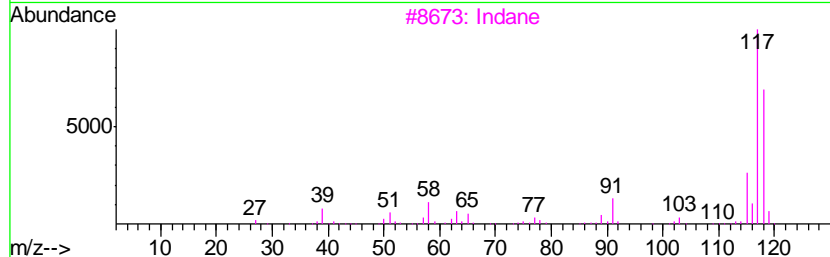
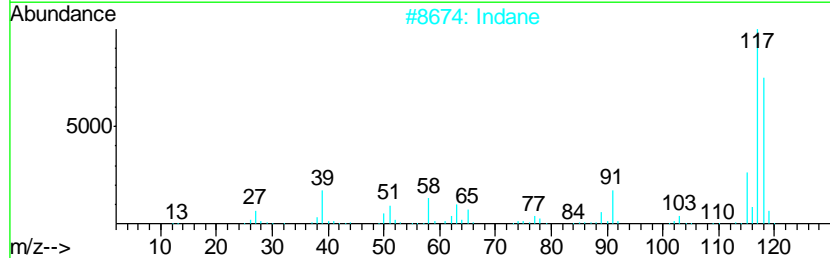
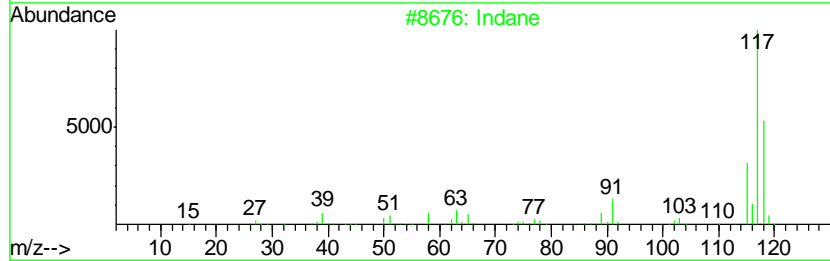
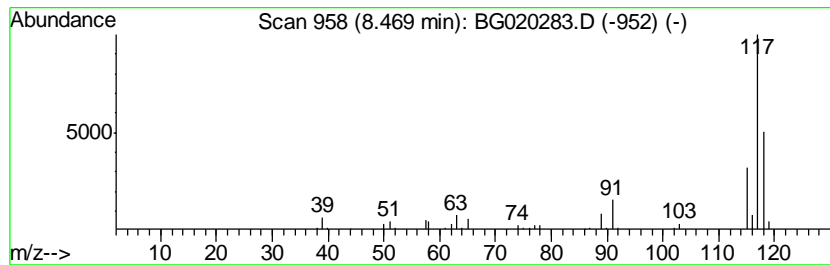
TIC Library : C:\DATABASE\NIST02.L  
 TIC Integration Parameters: LSCINT.P

\*\*\*\*\*  
 Peak Number 6 Indane Concentration Rank 5

R.T.	EstConc	Area	Relative to ISTD	R.T.
8.47	16.94 ng/ul	80278	1,4-Dichlorobenzene-d4	8.09

Hit#	of	Tentative ID	MW	MolForm	CAS#	Qual
1	5	Indane	118	C9H10	000496-11-7	94
2		Indane	118	C9H10	000496-11-7	87
3		Indane	118	C9H10	000496-11-7	87
4		Benzene, cyclopropyl-	118	C9H10	000873-49-4	64
5		Bicyclo[4.2.0]octa-1,3,5-triene,...	118	C9H10	055337-80-9	64



Data Path : Z:\HPCHEM1\BNA G\DATA\BG121915\  
 Data File : BG020283.D  
 Acq On : 18 Dec 2015 20:13  
 Operator : UM/SJ  
 Sample : G4768-04  
 Misc :  
 ALS Vial : 16 Sample Multiplier: 1

Instrument :  
 BNA\_G  
 ClientSampleID :  
 D9N28

Quant Method : Z:\HPCHEM1\BNA G\METHODS\SOM02.2-EPA-BG121415.M  
 Quant Title : SVOA CALIBRATION

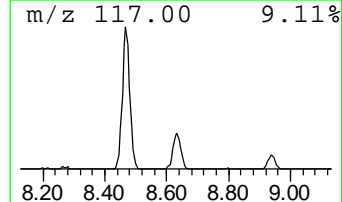
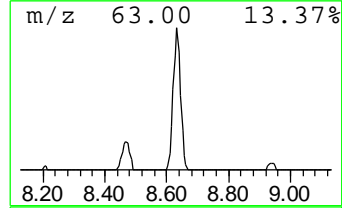
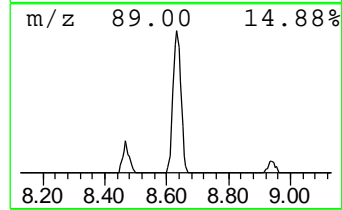
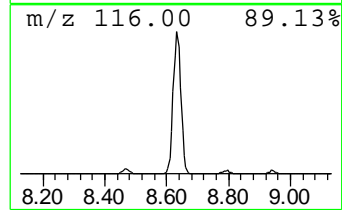
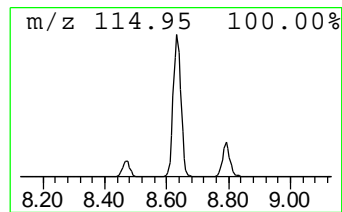
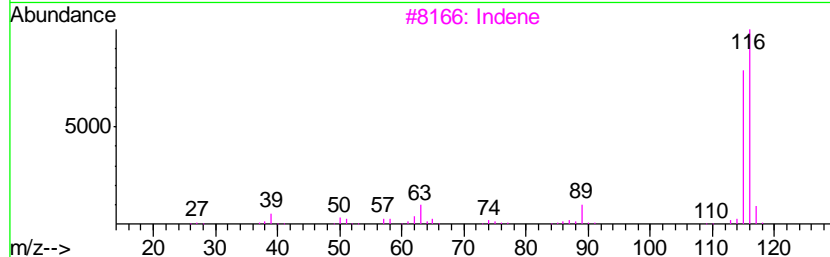
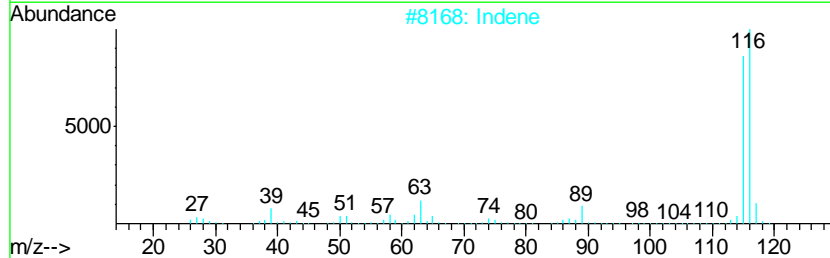
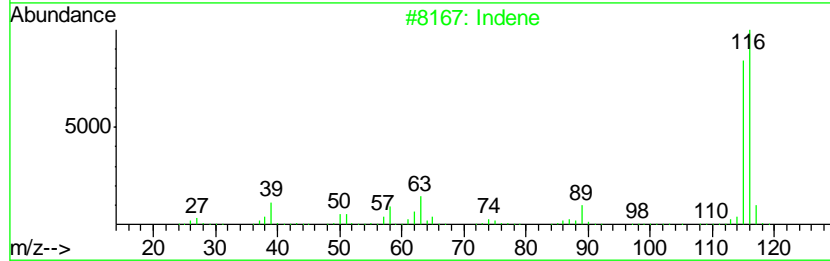
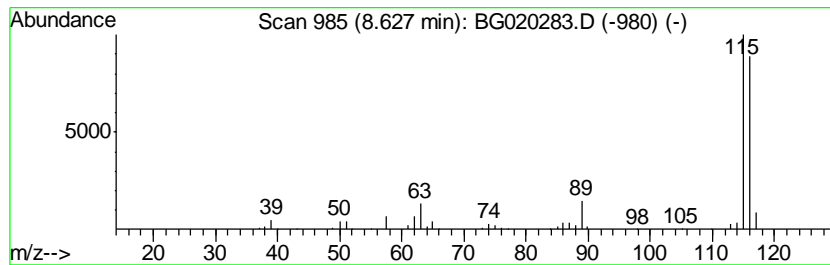
TIC Library : C:\DATABASE\NIST02.L  
 TIC Integration Parameters: LSCINT.P

\*\*\*\*\*  
 Peak Number 7 Indene Concentration Rank 2

R.T.	EstConc	Area	Relative to ISTD	R.T.
8.63	51.40 ng/ul	243627	1,4-Dichlorobenzene-d4	8.09

Hit#	of	Tentative ID	MW	MolForm	CAS#	Qual
1	5	Indene	116	C9H8	000095-13-6	95
2		Indene	116	C9H8	000095-13-6	95
3		Indene	116	C9H8	000095-13-6	95
4		Benzene, 1-propynyl-	116	C9H8	000673-32-5	94
5		Benzene, 1-propynyl-	116	C9H8	000673-32-5	91





Data Path : Z:\HPCHEM1\BNA G\DATA\BG121915\  
 Data File : BG020283.D  
 Acq On : 18 Dec 2015 20:13  
 Operator : UM/SJ  
 Sample : G4768-04  
 Misc :  
 ALS Vial : 16 Sample Multiplier: 1

Instrument :  
 BNA\_G  
 ClientSampleID :  
 D9N28

Quant Method : Z:\HPCHEM1\BNA G\METHODS\SOM02.2-EPA-BG121415.M  
 Quant Title : SVOA CALIBRATION

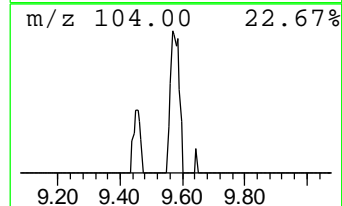
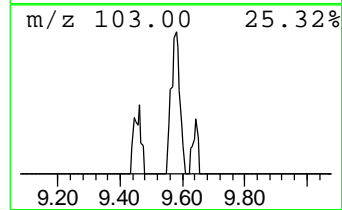
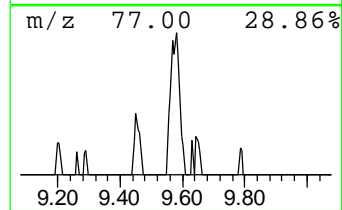
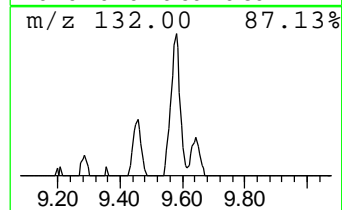
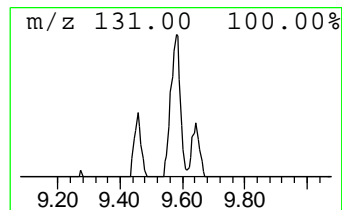
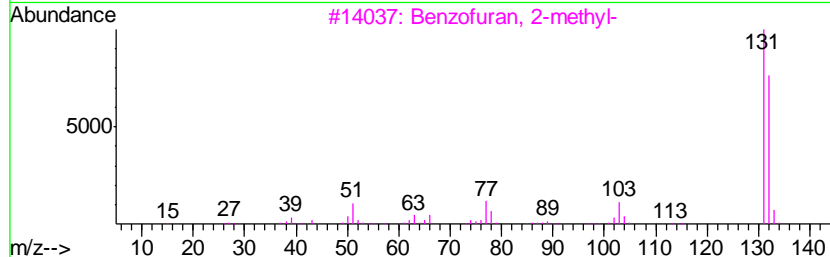
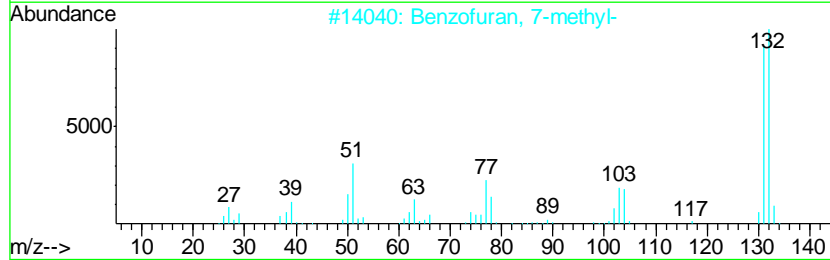
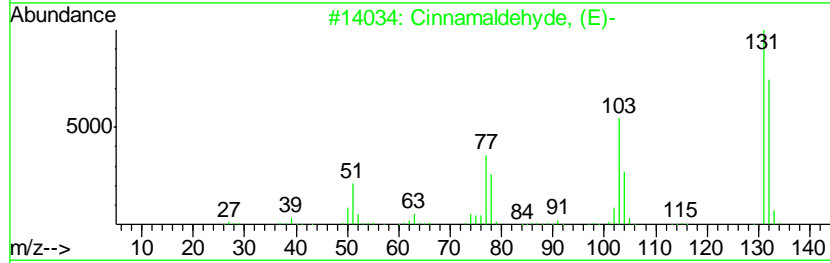
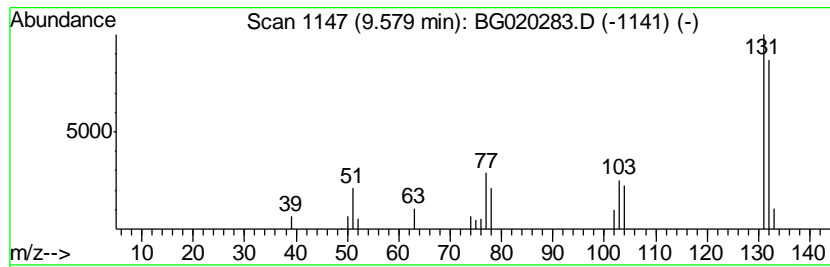
TIC Library : C:\DATABASE\NIST02.L  
 TIC Integration Parameters: LSCINT.P

\*\*\*\*\*  
 Peak Number 8 Cinnamaldehyde, (E)- Concentration Rank 32

R.T.	EstConc	Area	Relative to ISTD	R.T.
9.58	3.51 ng/ul	26203	Naphthalene-d8	10.91

Hit#	of	Tentative ID	MW	MolForm	CAS#	Qual
1	5	Cinnamaldehyde, (E)-	132	C9H8O	014371-10-9	93
2		Benzofuran, 7-methyl-	132	C9H8O	017059-52-8	91
3		Benzofuran, 2-methyl-	132	C9H8O	004265-25-2	91
4		Benzofuran, 2-methyl-	132	C9H8O	004265-25-2	91
5		3-Phenyl-2-propyn-1-ol	132	C9H8O	001504-58-1	87



Data Path : Z:\HPCHEM1\BNA G\DATA\BG121915\  
 Data File : BG020283.D  
 Acq On : 18 Dec 2015 20:13  
 Operator : UM/SJ  
 Sample : G4768-04  
 Misc :  
 ALS Vial : 16 Sample Multiplier: 1

Instrument :  
 BNA\_G  
 ClientSampleID :  
 D9N28

Quant Method : Z:\HPCHEM1\BNA G\METHODS\SOM02.2-EPA-BG121415.M  
 Quant Title : SVOA CALIBRATION

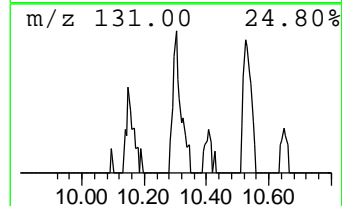
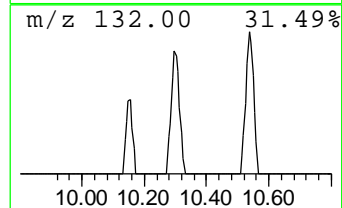
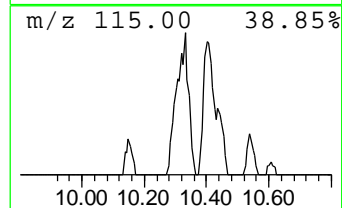
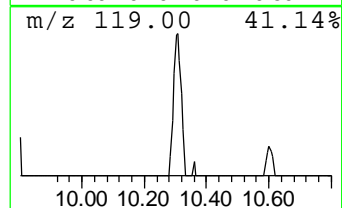
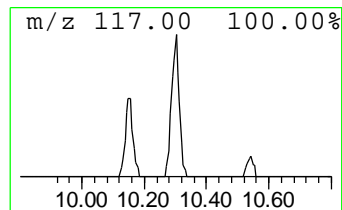
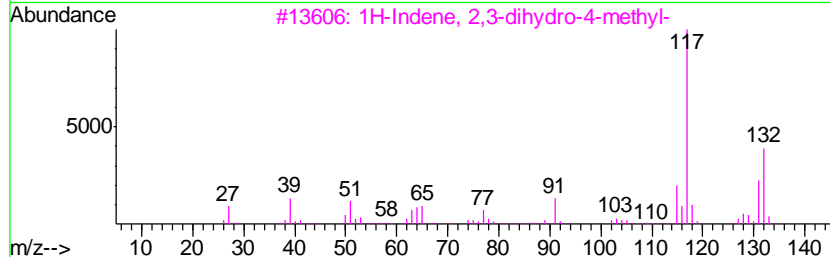
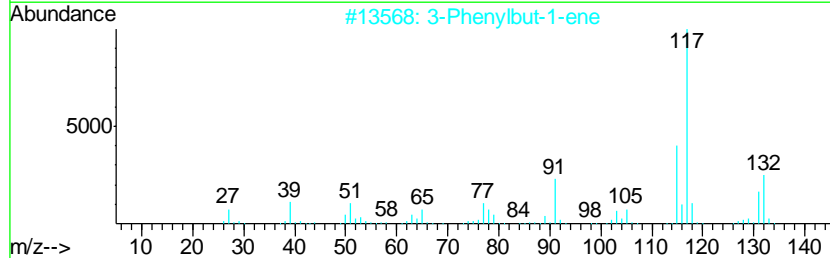
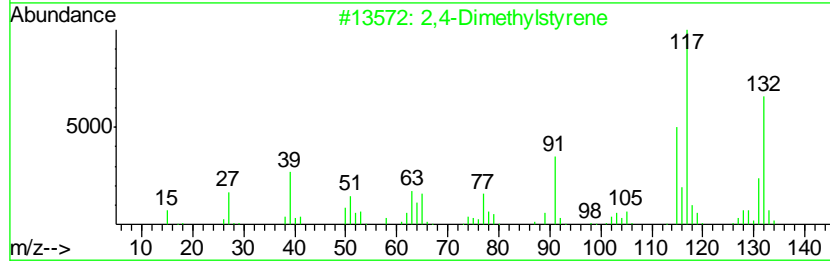
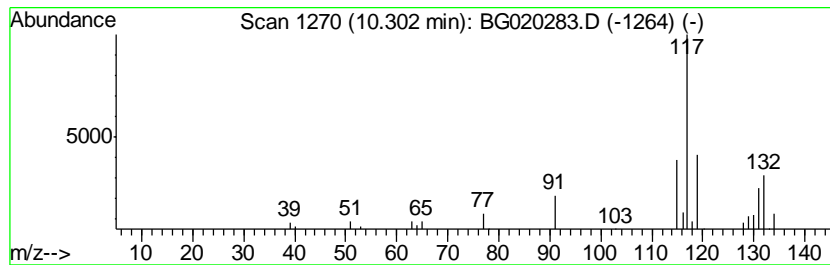
TIC Library : C:\DATABASE\NIST02.L  
 TIC Integration Parameters: LSCINT.P

\*\*\*\*\*  
 Peak Number 9 2,4-Dimethylstyrene Concentration Rank 16

R.T.	EstConc	Area	Relative to ISTD	R.T.
10.30	6.48 ng/ul	48421	Naphthalene-d8	10.91

Hit#	of	Tentative ID	MW	MolForm	CAS#	Qual
1	5	2,4-Dimethylstyrene	132	C10H12	002234-20-0	70
2		3-Phenylbut-1-ene	132	C10H12	000934-10-1	70
3		1H-Indene, 2,3-dihydro-4-methyl-	132	C10H12	000824-22-6	60
4		1H-Indene, 2,3-dihydro-5-methyl-	132	C10H12	000874-35-1	60
5		1-Phenyl-1-butene	132	C10H12	000824-90-8	58



Data Path : Z:\HPCHEM1\BNA G\DATA\BG121915\  
 Data File : BG020283.D  
 Acq On : 18 Dec 2015 20:13  
 Operator : UM/SJ  
 Sample : G4768-04  
 Misc :  
 ALS Vial : 16 Sample Multiplier: 1

Instrument :  
 BNA\_G  
 ClientSampleID :  
 D9N28

Quant Method : Z:\HPCHEM1\BNA G\METHODS\SOM02.2-EPA-BG121415.M  
 Quant Title : SVOA CALIBRATION

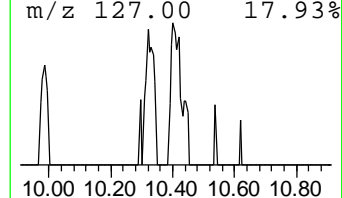
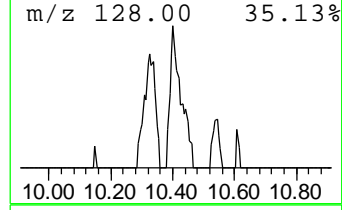
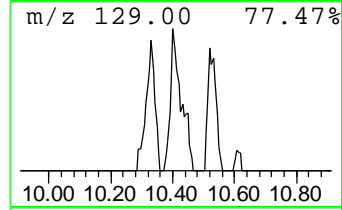
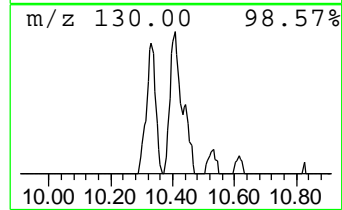
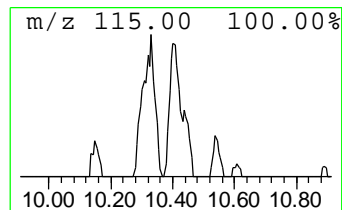
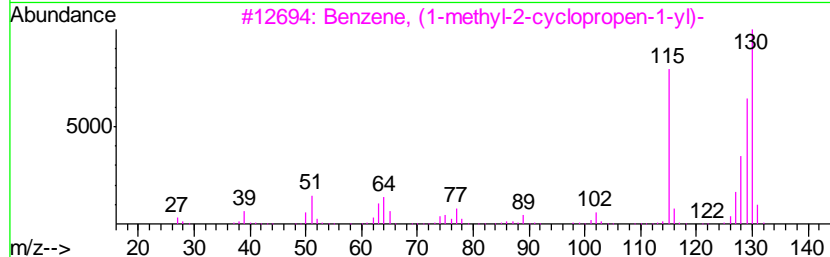
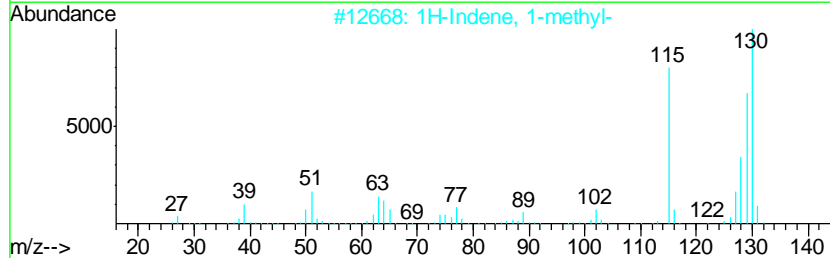
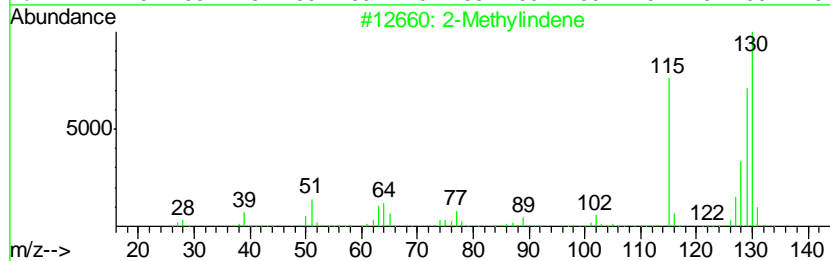
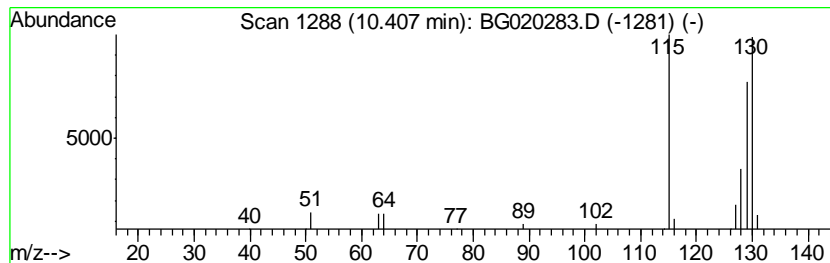
TIC Library : C:\DATABASE\NIST02.L  
 TIC Integration Parameters: LSCINT.P

\*\*\*\*\*  
 Peak Number 10 2-Methylindene Concentration Rank 40

R.T.	EstConc	Area	Relative to ISTD	R.T.
10.41	3.12 ng/ul	23340	Naphthalene-d8	10.91

Hit#	of	Tentative ID	MW	MolForm	CAS#	Qual
1	5	2-Methylindene	130	C10H10	002177-47-1	95
2		1H-Indene, 1-methyl-	130	C10H10	000767-59-9	95
3		Benzene, (1-methyl-2-cyclopropen...	130	C10H10	065051-83-4	95
4		Benzene, 1-butynyl-	130	C10H10	000622-76-4	93
5		Benzene, 1-methyl-1,2-propadienyl-	130	C10H10	022433-39-2	93



Data Path : Z:\HPCHEM1\BNA G\DATA\BG121915\  
 Data File : BG020283.D  
 Acq On : 18 Dec 2015 20:13  
 Operator : UM/SJ  
 Sample : G4768-04  
 Misc :  
 ALS Vial : 16 Sample Multiplier: 1

Instrument :  
 BNA\_G  
 ClientSampleID :  
 D9N28

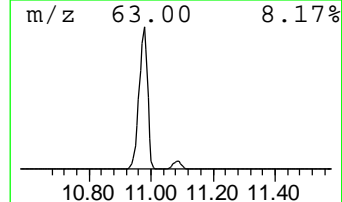
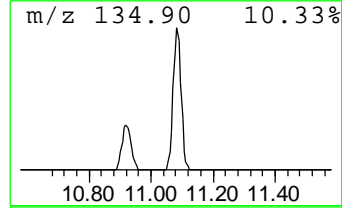
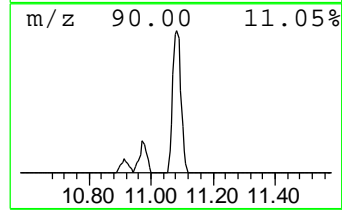
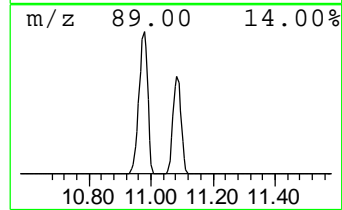
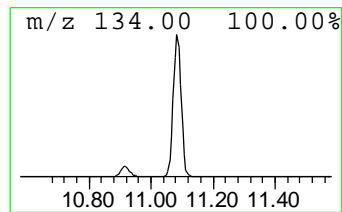
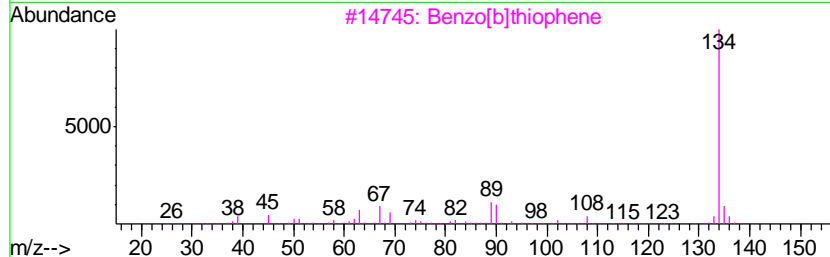
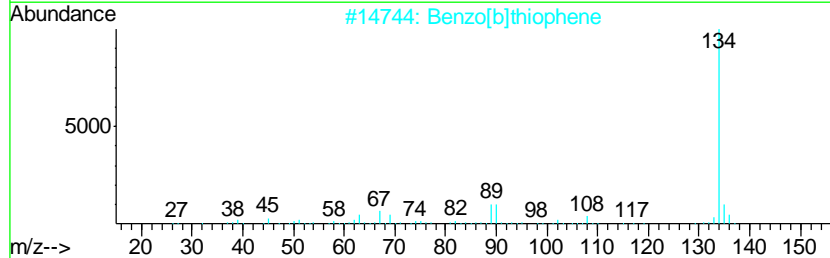
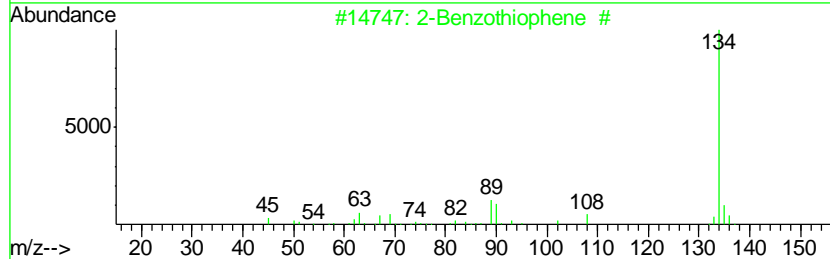
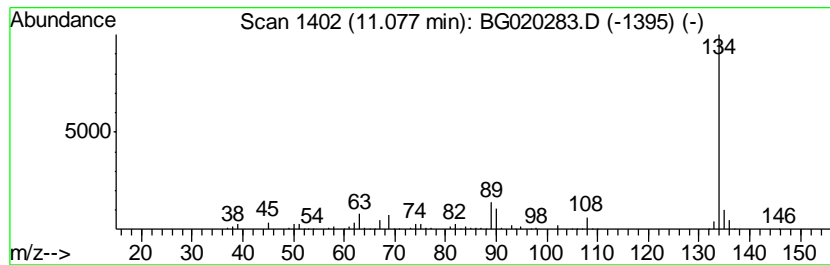
Quant Method : Z:\HPCHEM1\BNA G\METHODS\SOM02.2-EPA-BG121415.M  
 Quant Title : SVOA CALIBRATION

TIC Library : C:\DATABASE\NIST02.L  
 TIC Integration Parameters: LSCINT.P

\*\*\*\*\*  
 Peak Number 11 2-Benzothiophene # Concentration Rank 4

R.T.	EstConc	Area	Relative to ISTD	R.T.
11.08	27.76 ng/ul	207338	Naphthalene-d8	10.91

Hit#	of	Tentative ID	MW	MolForm	CAS#	Qual
1	5	2-Benzothiophene #	134	C8H6S	000270-82-6	97
2		Benzo[b]thiophene	134	C8H6S	000095-15-8	95
3		Benzo[b]thiophene	134	C8H6S	000095-15-8	94
4		Benzo[b]thiophene	134	C8H6S	000095-15-8	91
5		Cyclopenta[c]thiapyran	134	C8H6S	000270-63-3	90



Data Path : Z:\HPCHEM1\BNA G\DATA\BG121915\  
 Data File : BG020283.D  
 Acq On : 18 Dec 2015 20:13  
 Operator : UM/SJ  
 Sample : G4768-04  
 Misc :  
 ALS Vial : 16 Sample Multiplier: 1

Instrument :  
 BNA\_G  
 ClientSampleId :  
 D9N28

Quant Method : Z:\HPCHEM1\BNA G\METHODS\SOM02.2-EPA-BG121415.M  
 Quant Title : SVOA CALIBRATION

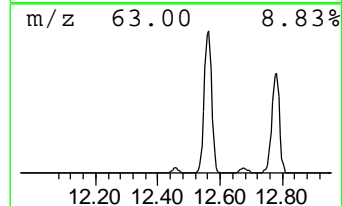
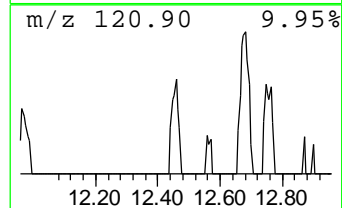
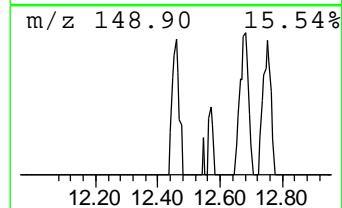
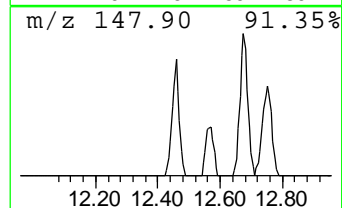
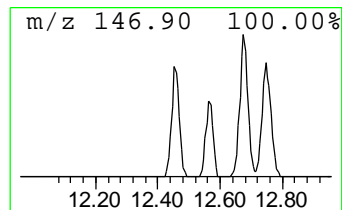
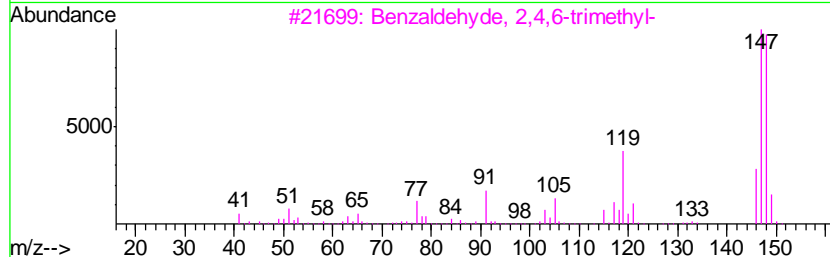
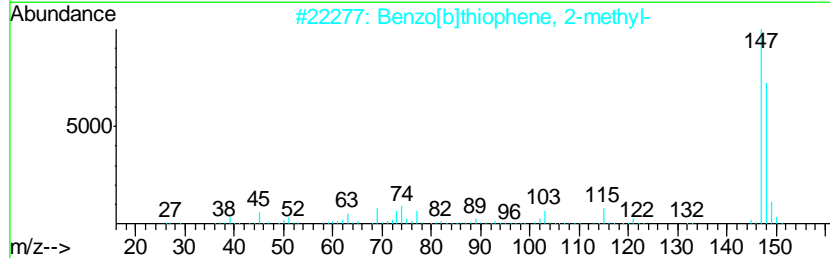
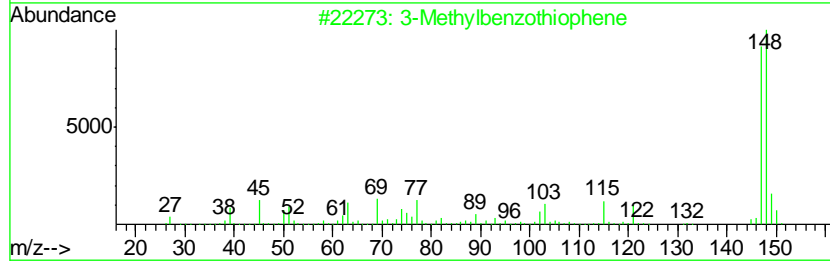
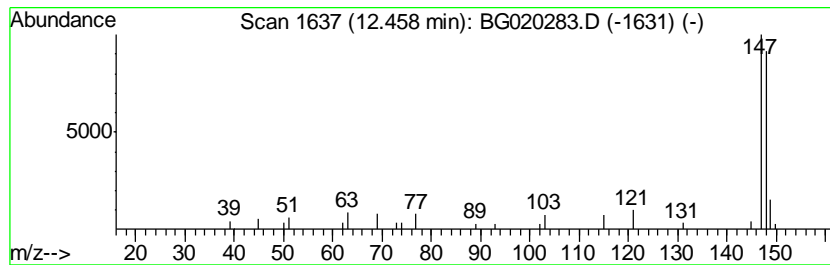
TIC Library : C:\DATABASE\NIST02.L  
 TIC Integration Parameters: LSCINT.P

\*\*\*\*\*  
 Peak Number 12 3-Methylbenzothiophene Concentration Rank 31

R.T.	EstConc	Area	Relative to ISTD	R.T.
12.46	3.75 ng/ul	27994	Napthalene-d8	10.91

Hit#	of	Tentative ID	MW	MolForm	CAS#	Qual
1	5	3-Methylbenzothiophene	148	C9H8S	001455-18-1	90
2		Benzo[b]thiophene, 2-methyl-	148	C9H8S	001195-14-8	87
3		Benzaldehyde, 2,4,6-trimethyl-	148	C10H12O	000487-68-3	86
4		Benzo[b]thiophene, 6-methyl-	148	C9H8S	016587-47-6	86
5		Benzo[b]thiophene, 5-methyl-	148	C9H8S	014315-14-1	86



Data Path : Z:\HPCHEM1\BNA G\DATA\BG121915\  
 Data File : BG020283.D  
 Acq On : 18 Dec 2015 20:13  
 Operator : UM/SJ  
 Sample : G4768-04  
 Misc :  
 ALS Vial : 16 Sample Multiplier: 1

Instrument :  
 BNA\_G  
 ClientSampleID :  
 D9N28

Quant Method : Z:\HPCHEM1\BNA G\METHODS\SOM02.2-EPA-BG121415.M  
 Quant Title : SVOA CALIBRATION

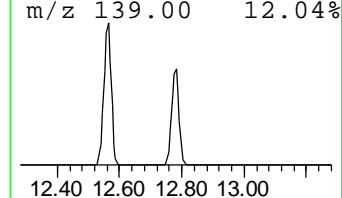
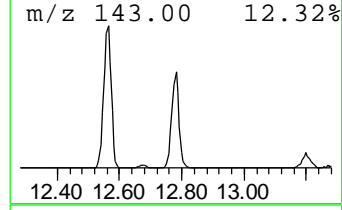
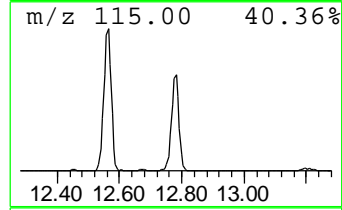
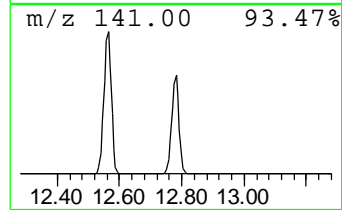
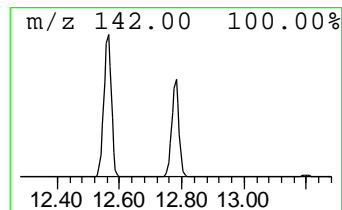
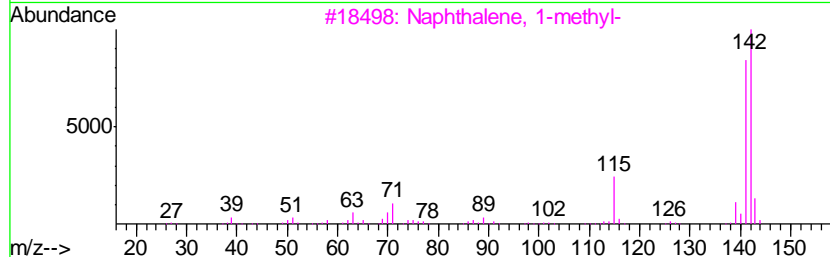
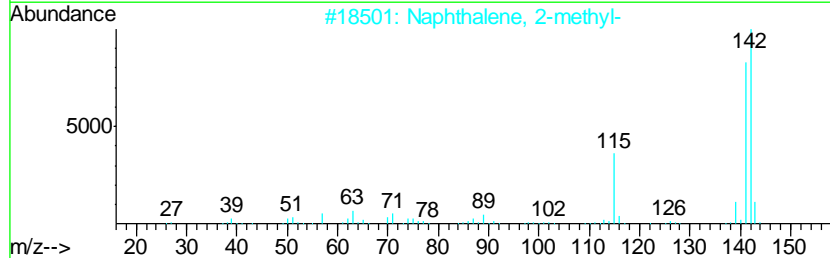
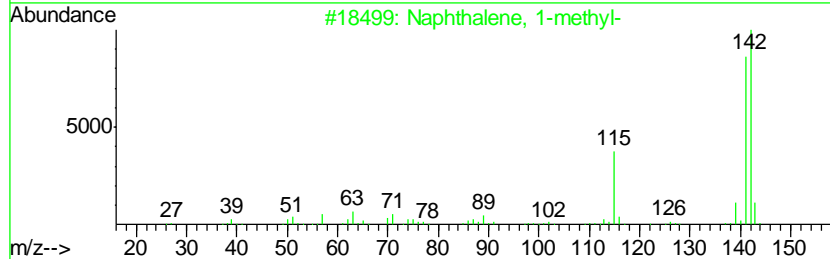
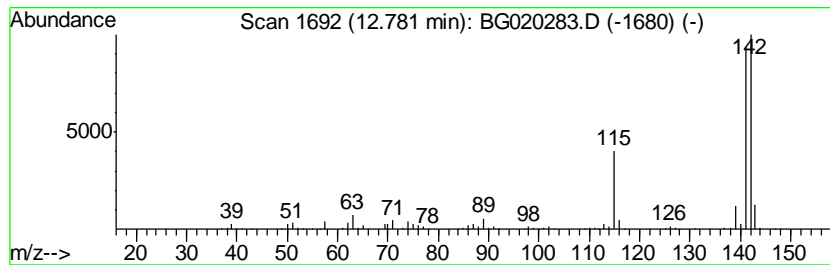
TIC Library : C:\DATABASE\NIST02.L  
 TIC Integration Parameters: LSCINT.P

\*\*\*\*\*  
 Peak Number 14 Naphthalene, 1-methyl- Concentration Rank 1

R.T.	EstConc	Area	Relative to ISTD	R.T.
12.78	95.24 ng/ul	711367	Naphthalene-d8	10.91

Hit#	of	Tentative ID	MW	MolForm	CAS#	Qual
1	5	Naphthalene, 1-methyl-	142	C11H10	000090-12-0	96
2		Naphthalene, 2-methyl-	142	C11H10	000091-57-6	96
3		Naphthalene, 1-methyl-	142	C11H10	000090-12-0	94
4		1,4-Methanonaphthalene, 1,4-dihy...	142	C11H10	004453-90-1	94
5		Benzocycloheptatriene	142	C11H10	000264-09-5	94



Data Path : Z:\HPCHEM1\BNA G\DATA\BG121915\  
 Data File : BG020283.D  
 Acq On : 18 Dec 2015 20:13  
 Operator : UM/SJ  
 Sample : G4768-04  
 Misc :  
 ALS Vial : 16 Sample Multiplier: 1

Instrument :  
 BNA\_G  
 ClientSampleID :  
 D9N28

Quant Method : Z:\HPCHEM1\BNA G\METHODS\SOM02.2-EPA-BG121415.M  
 Quant Title : SVOA CALIBRATION

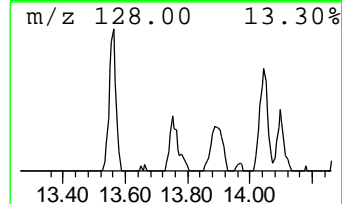
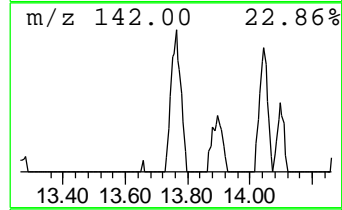
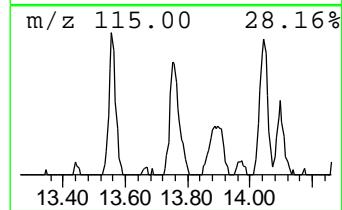
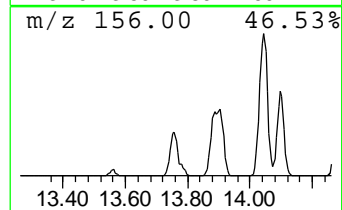
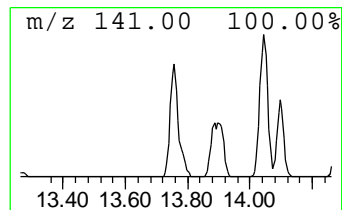
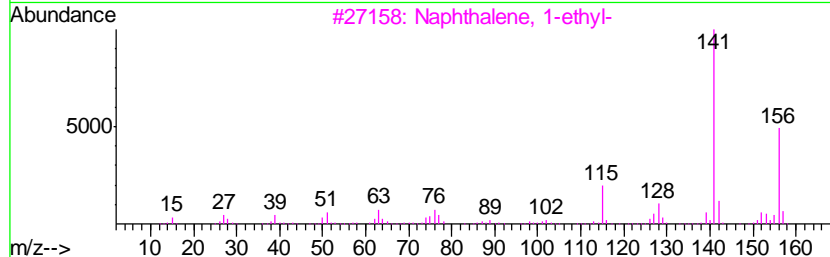
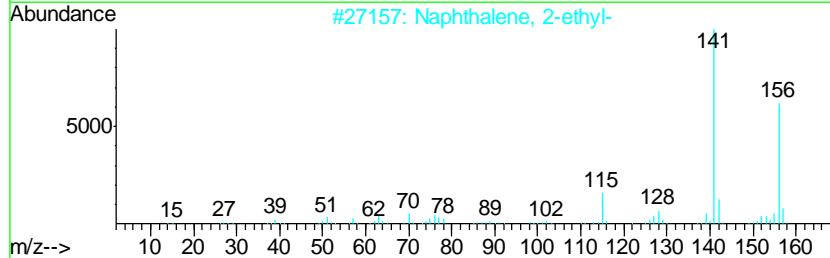
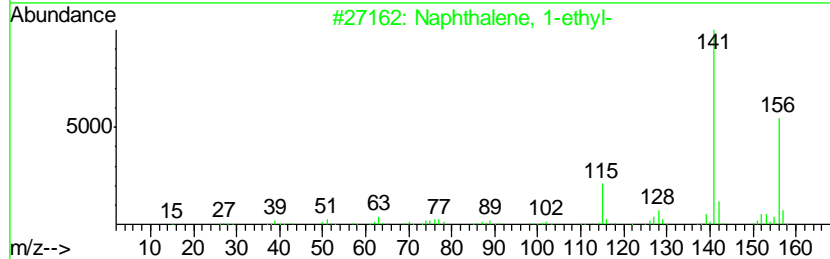
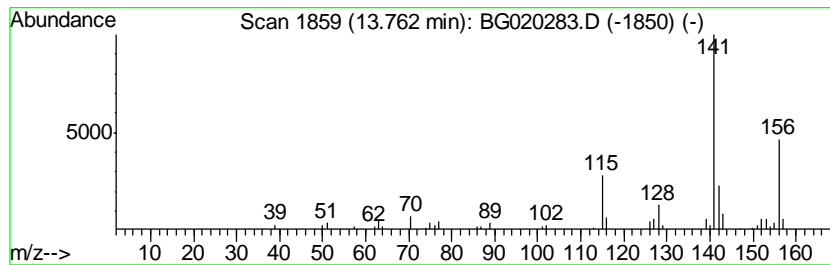
TIC Library : C:\DATABASE\NIST02.L  
 TIC Integration Parameters: LSCINT.P

\*\*\*\*\*  
 Peak Number 15 Naphthalene, 1-ethyl- Concentration Rank 19

R.T.	EstConc	Area	Relative to ISTD	R.T.
13.76	6.29 ng/ul	78544	Acenaphthene-d10	14.73

Hit#	of	Tentative ID	MW	MolForm	CAS#	Qual
1	5	Naphthalene, 1-ethyl-	156	C12H12	001127-76-0	95
2		Naphthalene, 2-ethyl-	156	C12H12	000939-27-5	94
3		Naphthalene, 1-ethyl-	156	C12H12	001127-76-0	94
4		Naphthalene, 2-ethyl-	156	C12H12	000939-27-5	94
5		Naphthalene, 1-ethyl-	156	C12H12	001127-76-0	93



Data Path : Z:\HPCHEM1\BNA G\DATA\BG121915\  
 Data File : BG020283.D  
 Acq On : 18 Dec 2015 20:13  
 Operator : UM/SJ  
 Sample : G4768-04  
 Misc :  
 ALS Vial : 16 Sample Multiplier: 1

Instrument :  
 BNA\_G  
 ClientSampled :  
 D9N28

Quant Method : Z:\HPCHEM1\BNA G\METHODS\SOM02.2-EPA-BG121415.M  
 Quant Title : SVOA CALIBRATION

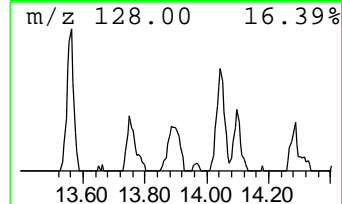
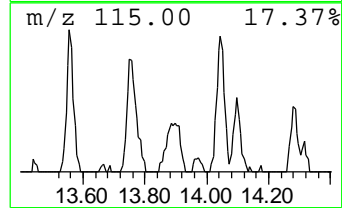
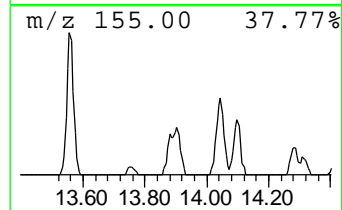
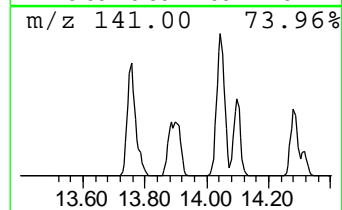
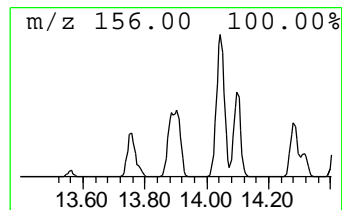
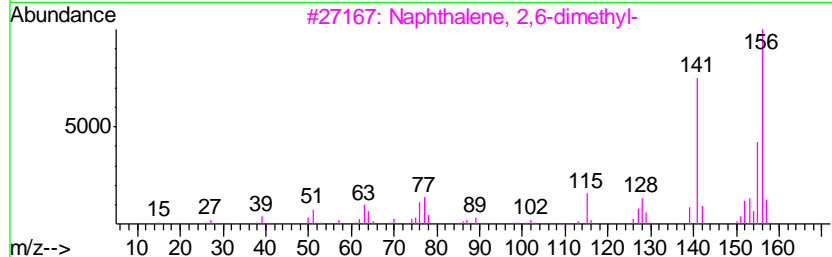
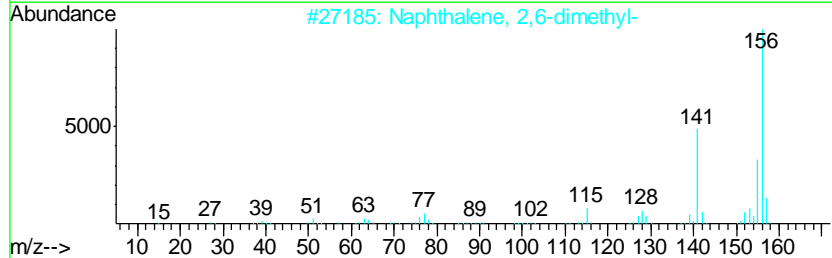
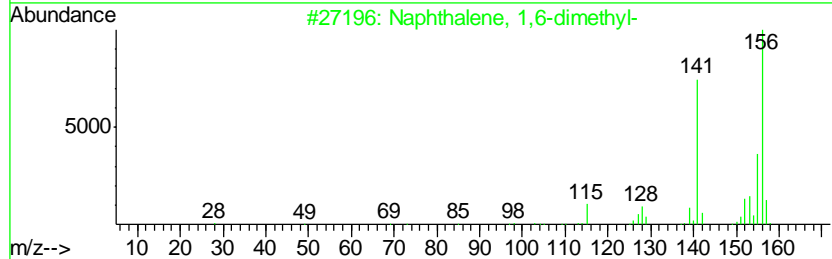
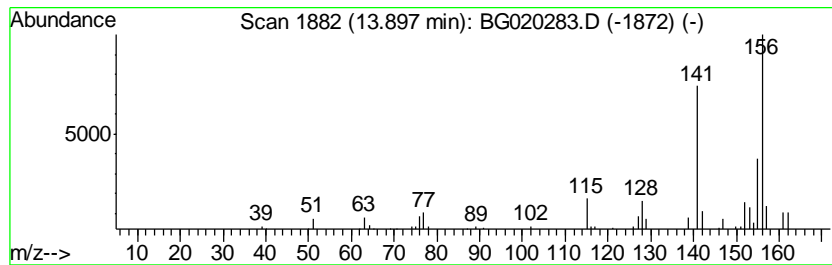
TIC Library : C:\DATABASE\NIST02.L  
 TIC Integration Parameters: LSCINT.P

\*\*\*\*\*  
 Peak Number 16 Naphthalene, 1,6-dimethyl- Concentration Rank 13

R.T.	EstConc	Area	Relative to ISTD	R.T.
13.90	7.75 ng/ul	96860	Acenaphthene-d10	14.73

Hit#	of	Tentative ID	MW	MolForm	CAS#	Qual
1	5	Naphthalene, 1,6-dimethyl-	156	C12H12	000575-43-9	96
2		Naphthalene, 2,6-dimethyl-	156	C12H12	000581-42-0	95
3		Naphthalene, 2,6-dimethyl-	156	C12H12	000581-42-0	95
4		Naphthalene, 2,6-dimethyl-	156	C12H12	000581-42-0	95
5		Naphthalene, 1,6-dimethyl-	156	C12H12	000575-43-9	95





Data Path : Z:\HPCHEM1\BNA G\DATA\BG121915\  
 Data File : BG020283.D  
 Acq On : 18 Dec 2015 20:13  
 Operator : UM/SJ  
 Sample : G4768-04  
 Misc :  
 ALS Vial : 16 Sample Multiplier: 1

Instrument :  
 BNA\_G  
 ClientSampleId :  
 D9N28

Quant Method : Z:\HPCHEM1\BNA G\METHODS\SOM02.2-EPA-BG121415.M  
 Quant Title : SVOA CALIBRATION

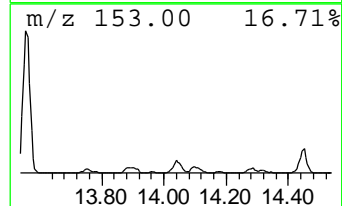
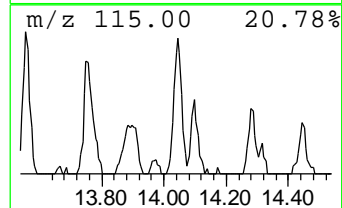
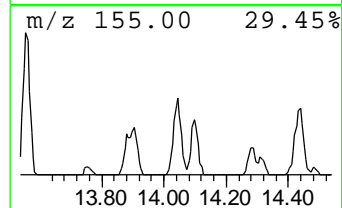
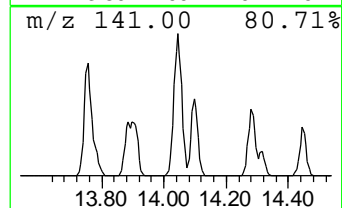
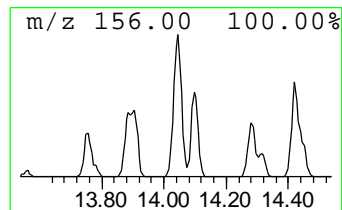
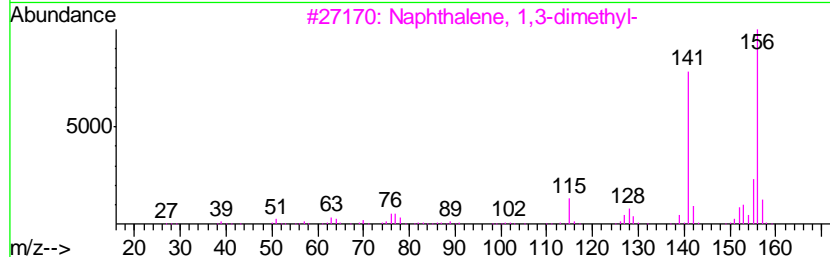
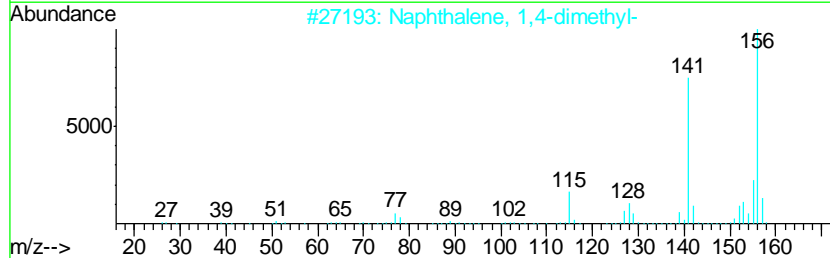
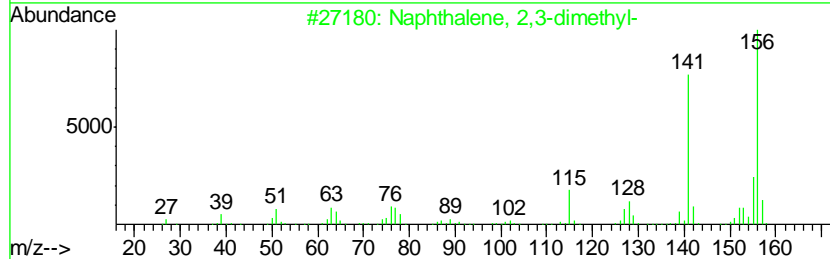
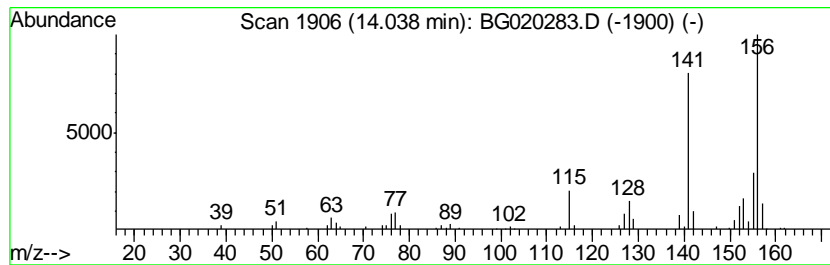
TIC Library : C:\DATABASE\NIST02.L  
 TIC Integration Parameters: LSCINT.P

\*\*\*\*\*  
 Peak Number 17 Naphthalene, 2,3-dimethyl- Concentration Rank 9

R.T.	EstConc	Area	Relative to ISTD	R.T.
14.04	11.09 ng/ul	138531	Acenaphthene-d10	14.73

Hit#	of	Tentative ID	MW	MolForm	CAS#	Qual
1	5	Naphthalene, 2,3-dimethyl-	156	C12H12	000581-40-8	97
2		Naphthalene, 1,4-dimethyl-	156	C12H12	000571-58-4	96
3		Naphthalene, 1,3-dimethyl-	156	C12H12	000575-41-7	96
4		Naphthalene, 1,6-dimethyl-	156	C12H12	000575-43-9	96
5		Naphthalene, 1,3-dimethyl-	156	C12H12	000575-41-7	96



Data Path : Z:\HPCHEM1\BNA G\DATA\BG121915\  
 Data File : BG020283.D  
 Acq On : 18 Dec 2015 20:13  
 Operator : UM/SJ  
 Sample : G4768-04  
 Misc :  
 ALS Vial : 16 Sample Multiplier: 1

Instrument :  
 BNA\_G  
 ClientSampleId :  
 D9N28

Quant Method : Z:\HPCHEM1\BNA G\METHODS\SOM02.2-EPA-BG121415.M  
 Quant Title : SVOA CALIBRATION

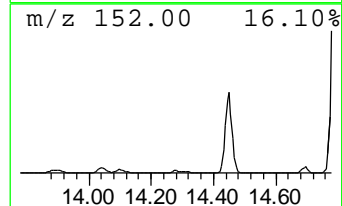
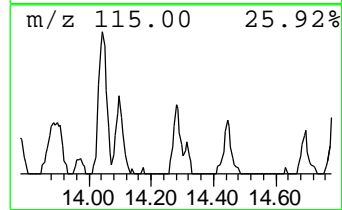
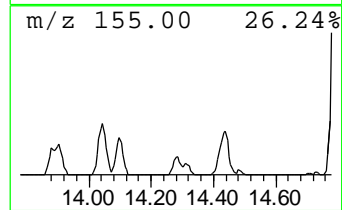
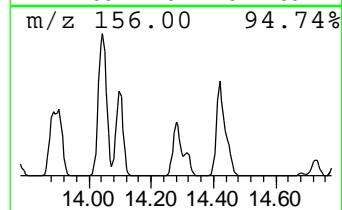
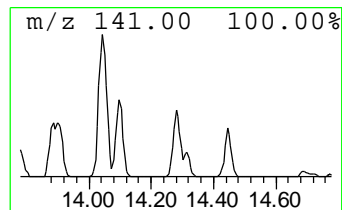
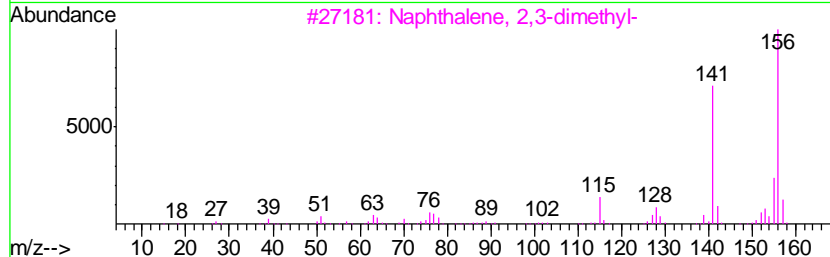
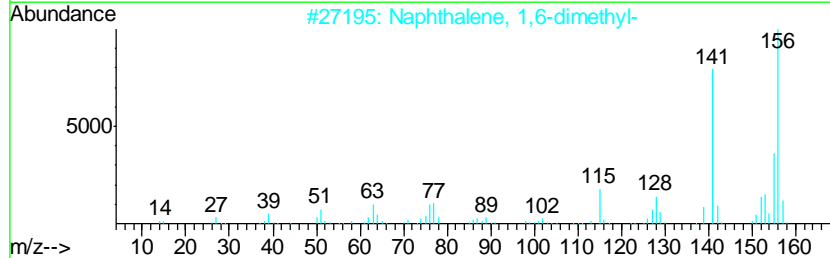
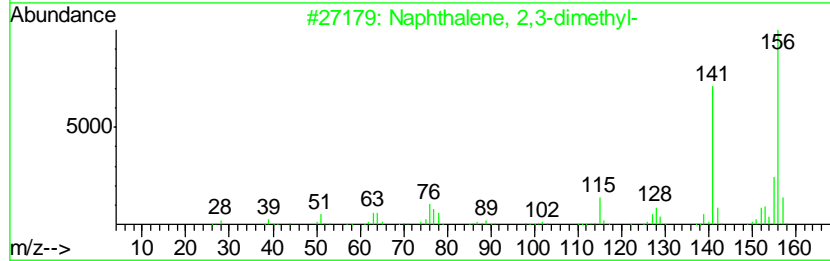
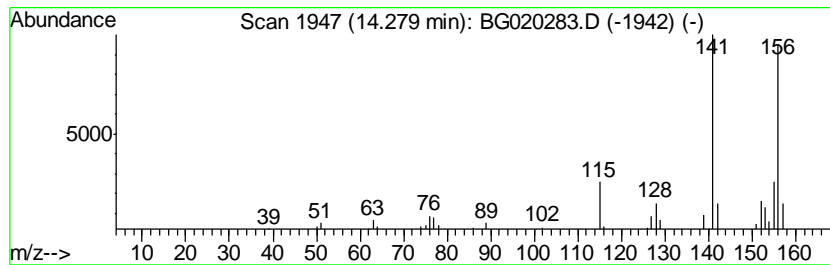
TIC Library : C:\DATABASE\NIST02.L  
 TIC Integration Parameters: LSCINT.P

\*\*\*\*\*  
 Peak Number 18 Naphthalene, 1,5-dimethyl- Concentration Rank 29

R.T.	EstConc	Area	Relative to ISTD	R.T.
14.28	4.05 ng/ul	50663	Acenaphthene-d10	14.73

Hit#	of	Tentative ID	MW	MolForm	CAS#	Qual
1	5	Naphthalene, 2,3-dimethyl-	156	C12H12	000581-40-8	97
2		Naphthalene, 1,6-dimethyl-	156	C12H12	000575-43-9	97
3		Naphthalene, 2,3-dimethyl-	156	C12H12	000581-40-8	96
4		Naphthalene, 1,5-dimethyl-	156	C12H12	000571-61-9	96
5		Naphthalene, 1,6-dimethyl-	156	C12H12	000575-43-9	96



Data Path : Z:\HPCHEM1\BNA G\DATA\BG121915\  
 Data File : BG020283.D  
 Acq On : 18 Dec 2015 20:13  
 Operator : UM/SJ  
 Sample : G4768-04  
 Misc :  
 ALS Vial : 16 Sample Multiplier: 1

Instrument :  
 BNA\_G  
 ClientSampled :  
 D9N28

Quant Method : Z:\HPCHEM1\BNA G\METHODS\SOM02.2-EPA-BG121415.M  
 Quant Title : SVOA CALIBRATION

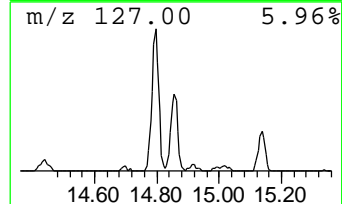
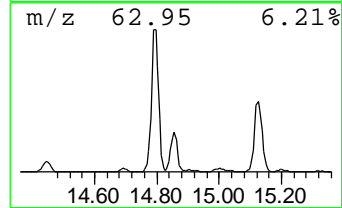
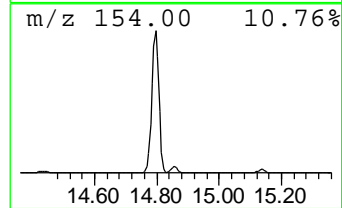
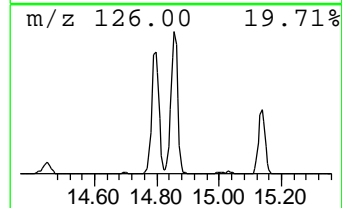
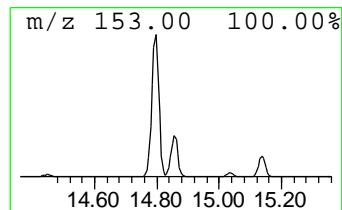
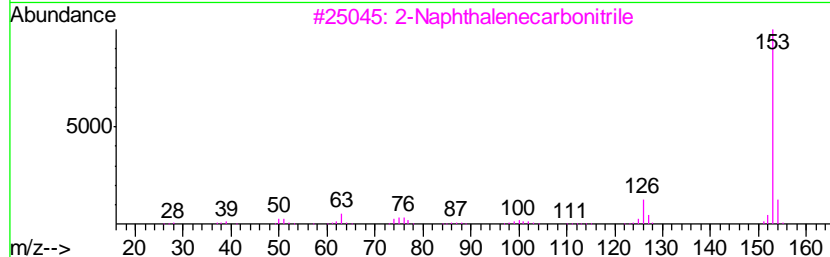
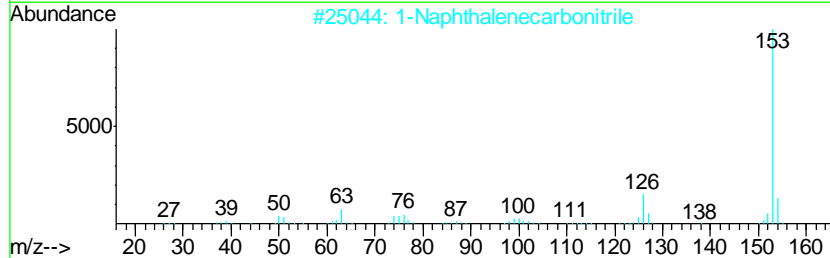
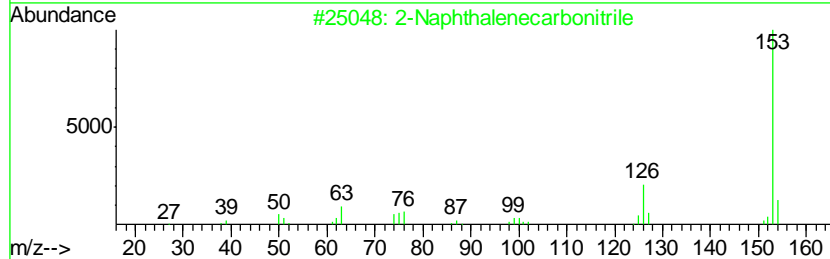
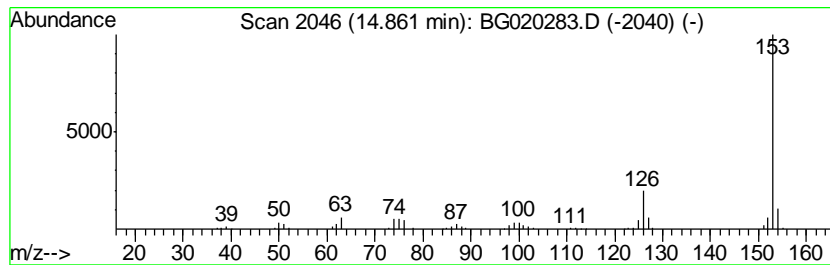
TIC Library : C:\DATABASE\NIST02.L  
 TIC Integration Parameters: LSCINT.P

\*\*\*\*\*  
 Peak Number 19 2-Naphthalenecarbonitrile Concentration Rank 3

R.T.	EstConc	Area	Relative to ISTD	R.T.
14.86	28.26 ng/ul	353156	Acenaphthene-d10	14.73

Hit#	of	Tentative ID	MW	MolForm	CAS#	Qual
1	5	2-Naphthalenecarbonitrile	153	C11H7N	000613-46-7	97
2		1-Naphthalenecarbonitrile	153	C11H7N	000086-53-3	95
3		2-Naphthalenecarbonitrile	153	C11H7N	000613-46-7	94
4		1-Naphthalenecarbonitrile	153	C11H7N	000086-53-3	91
5		1-Naphthalenecarbonitrile	153	C11H7N	000086-53-3	91



Data Path : Z:\HPCHEM1\BNA G\DATA\BG121915\  
 Data File : BG020283.D  
 Acq On : 18 Dec 2015 20:13  
 Operator : UM/SJ  
 Sample : G4768-04  
 Misc :  
 ALS Vial : 16 Sample Multiplier: 1

Instrument :  
 BNA\_G  
 ClientSampleID :  
 D9N28

Quant Method : Z:\HPCHEM1\BNA G\METHODS\SOM02.2-EPA-BG121415.M  
 Quant Title : SVOA CALIBRATION

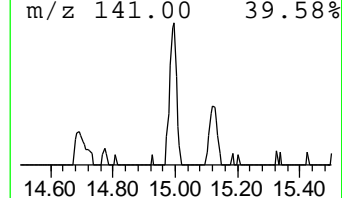
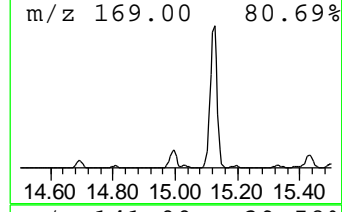
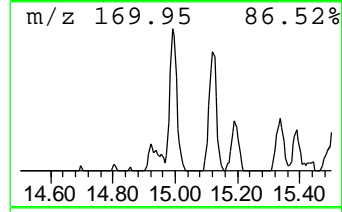
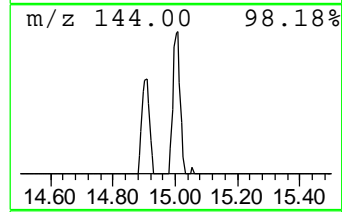
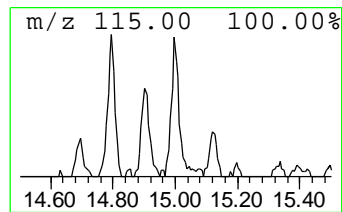
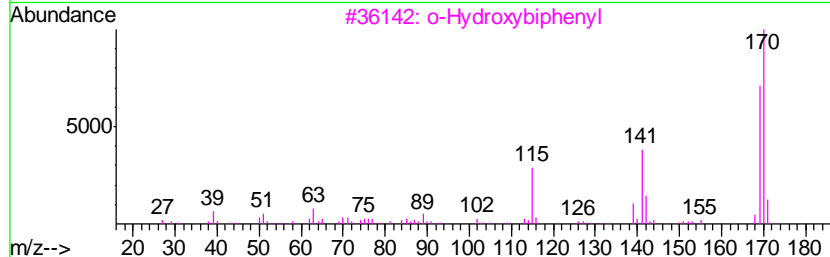
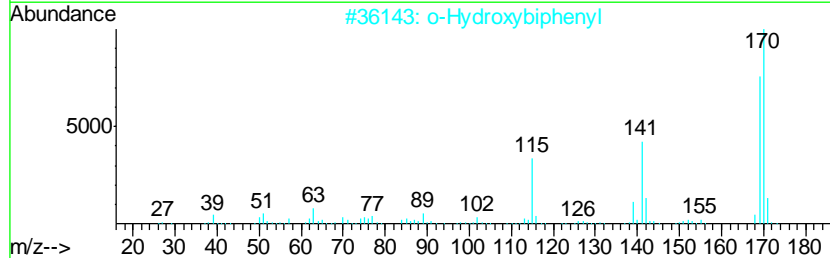
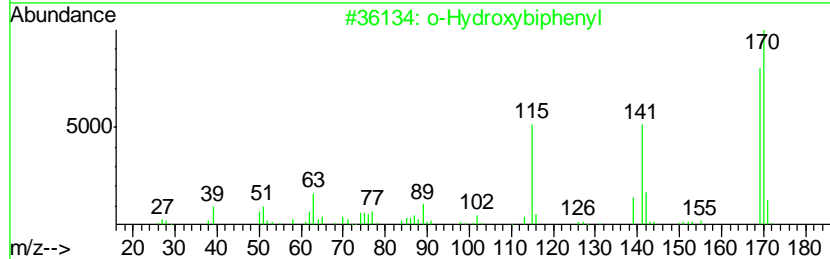
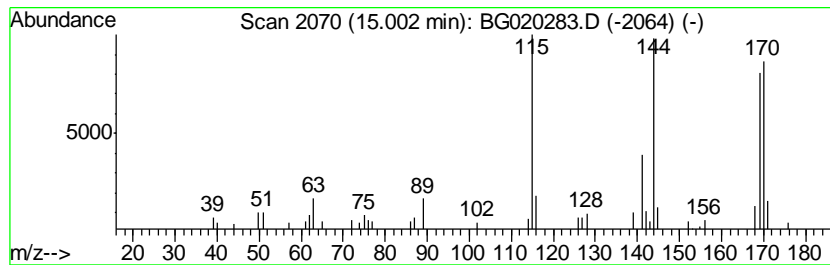
TIC Library : C:\DATABASE\NIST02.L  
 TIC Integration Parameters: LSCINT.P

\*\*\*\*\*  
 Peak Number 20 o-Hydroxybiphenyl Concentration Rank 30

R.T.	EstConc	Area	Relative to ISTD	R.T.
15.00	3.98 ng/ul	49699	Acenaphthene-d10	14.73

Hit#	of	Tentative ID	MW	MolForm	CAS#	Qual
1	5	o-Hydroxybiphenyl	170	C12H10O	000090-43-7	87
2		o-Hydroxybiphenyl	170	C12H10O	000090-43-7	74
3		o-Hydroxybiphenyl	170	C12H10O	000090-43-7	52
4		o-Hydroxybiphenyl	170	C12H10O	000090-43-7	50
5		3-Benzylpyridazine	170	C11H10N2	060905-93-3	43



Data Path : Z:\HPCHEM1\BNA G\DATA\BG121915\  
 Data File : BG020283.D  
 Acq On : 18 Dec 2015 20:13  
 Operator : UM/SJ  
 Sample : G4768-04  
 Misc :  
 ALS Vial : 16 Sample Multiplier: 1

Instrument :  
 BNA\_G  
 ClientSampleID :  
 D9N28

Quant Method : Z:\HPCHEM1\BNA G\METHODS\SOM02.2-EPA-BG121415.M  
 Quant Title : SVOA CALIBRATION

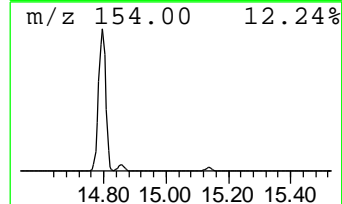
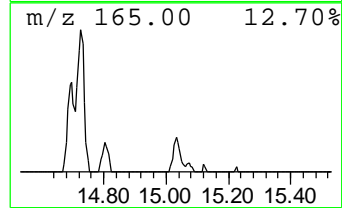
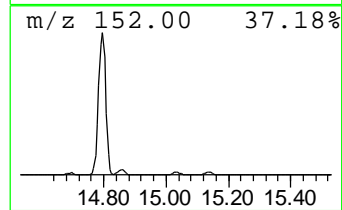
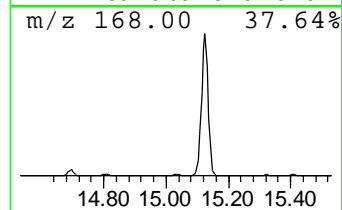
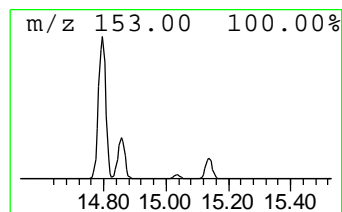
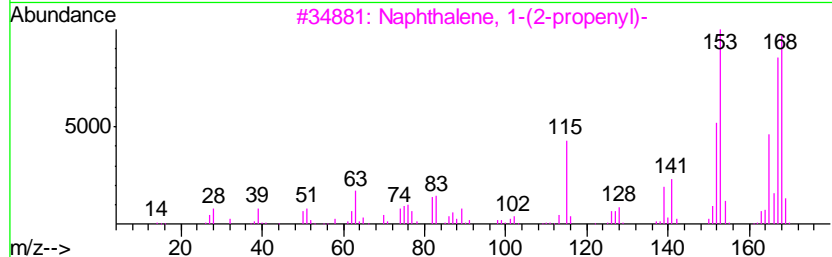
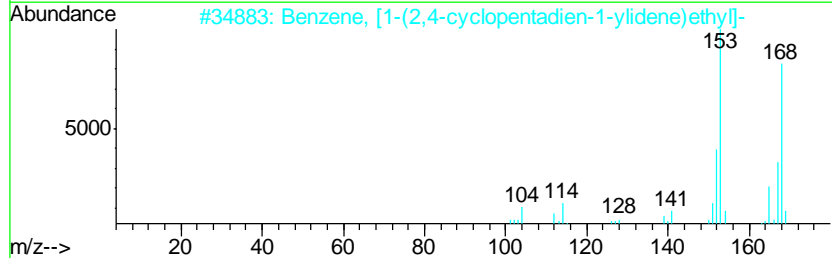
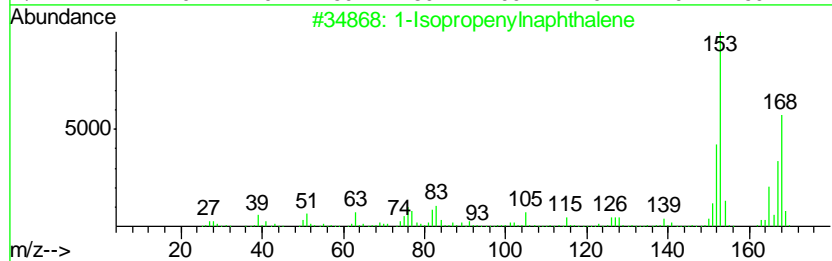
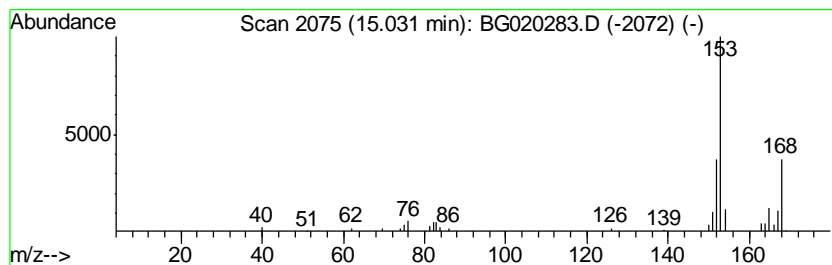
TIC Library : C:\DATABASE\NIST02.L  
 TIC Integration Parameters: LSCINT.P

\*\*\*\*\*  
 Peak Number 21 1-Isopropenylnaphthalene Concentration Rank 34

R.T.	EstConc	Area	Relative to ISTD	R.T.
15.03	3.47 ng/ul	43328	Acenaphthene-d10	14.73

Hit#	of	Tentative ID	MW	MolForm	CAS#	Qual
1	5	1-Isopropenylnaphthalene	168	C13H12	001855-47-6	80
2		Benzene, [1-(2,4-cyclopentadien-...	168	C13H12	002320-32-3	72
3		Naphthalene, 1-(2-propenyl)-	168	C13H12	002489-86-3	64
4		Ethanone, 1-(2,3,4-trihydroxyphe...	168	C8H8O4	000528-21-2	40
5		Ethanone, 1-(2,3,4-trihydroxyphe...	168	C8H8O4	000528-21-2	38



Data Path : Z:\HPCHEM1\BNA G\DATA\BG121915\  
 Data File : BG020283.D  
 Acq On : 18 Dec 2015 20:13  
 Operator : UM/SJ  
 Sample : G4768-04  
 Misc :  
 ALS Vial : 16 Sample Multiplier: 1

Instrument :  
 BNA\_G  
 ClientSampled :  
 D9N28

Quant Method : Z:\HPCHEM1\BNA G\METHODS\SOM02.2-EPA-BG121415.M  
 Quant Title : SVOA CALIBRATION

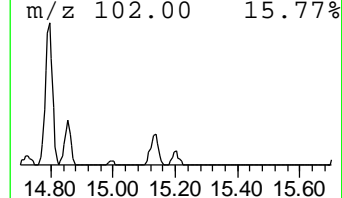
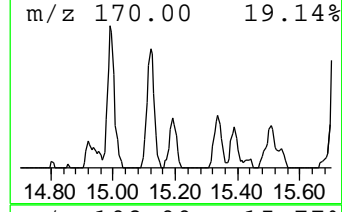
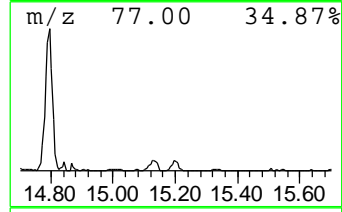
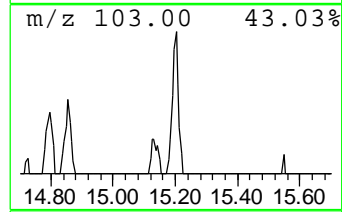
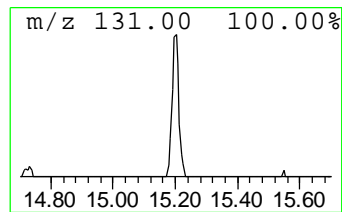
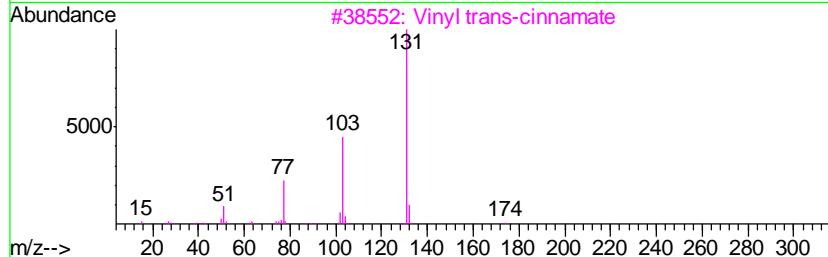
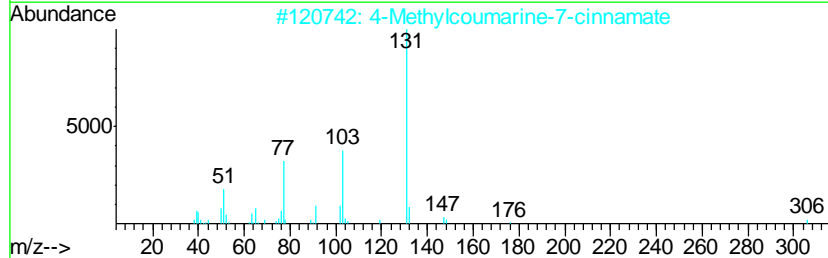
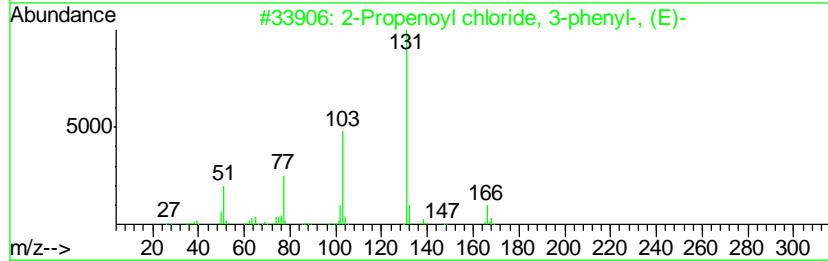
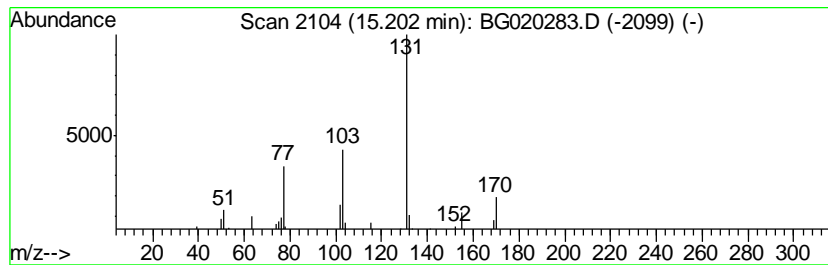
TIC Library : C:\DATABASE\NIST02.L  
 TIC Integration Parameters: LSCINT.P

\*\*\*\*\*  
 Peak Number 22 2-Propenoyl chloride, 3-phe... Concentration Rank 46

R.T.	EstConc	Area	Relative to ISTD	R.T.
15.20	2.24 ng/ul	28017	Acenaphthene-d10	14.73

Hit#	of	Tentative ID	MW	MolForm	CAS#	Qual
1	5	2-Propenoyl chloride, 3-phenyl-, ...	166	C9H7ClO	017082-09-6	53
2		4-Methylcoumarine-7-cinnamate	306	C19H14O4	300829-05-4	53
3		Vinyl trans-cinnamate	174	C11H10O2	017719-70-9	53
4		1-(2-Vinylphenyl)propan-1-one	160	C11H12O	052095-41-7	53
5		1,3-Phenylene, bis(3-phenylprope...	370	C24H18O4	1000259-62-4	53



Data Path : Z:\HPCHEM1\BNA G\DATA\BG121915\  
 Data File : BG020283.D  
 Acq On : 18 Dec 2015 20:13  
 Operator : UM/SJ  
 Sample : G4768-04  
 Misc :  
 ALS Vial : 16 Sample Multiplier: 1

Instrument :  
 BNA\_G  
 ClientSampleID :  
 D9N28

Quant Method : Z:\HPCHEM1\BNA G\METHODS\SOM02.2-EPA-BG121415.M  
 Quant Title : SVOA CALIBRATION

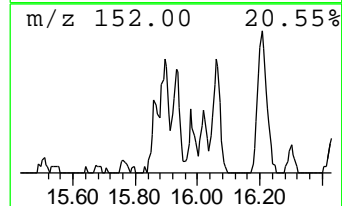
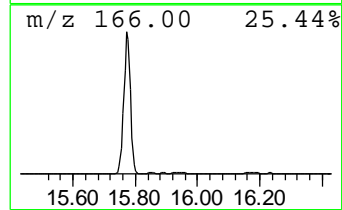
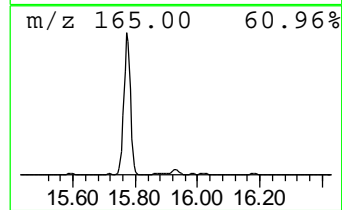
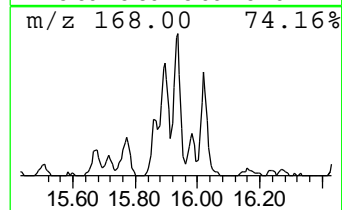
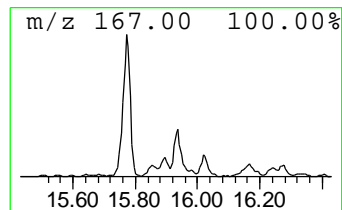
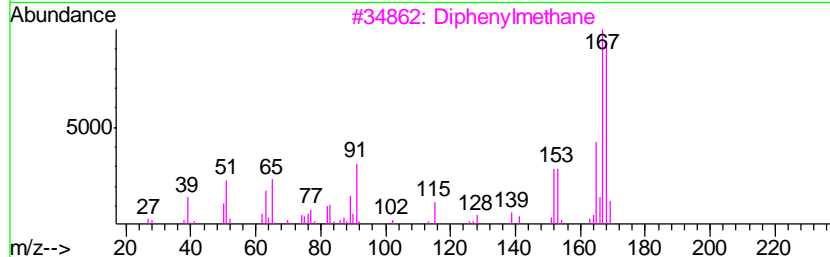
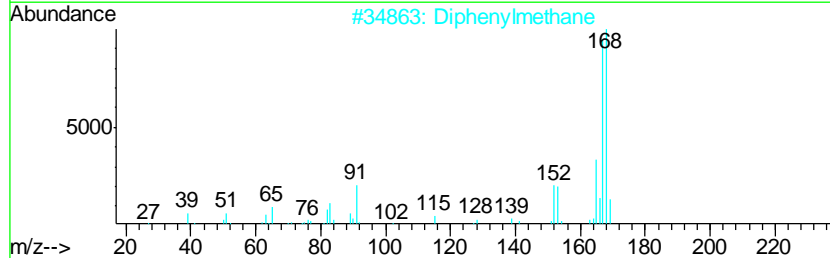
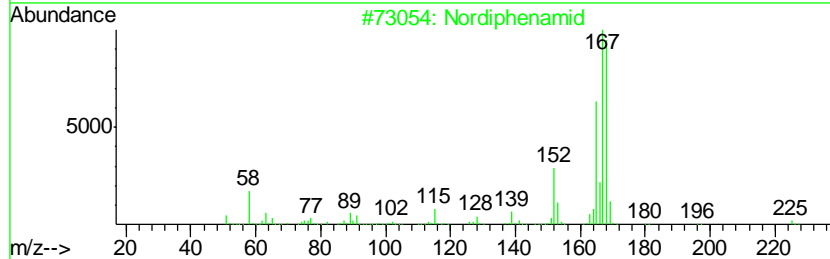
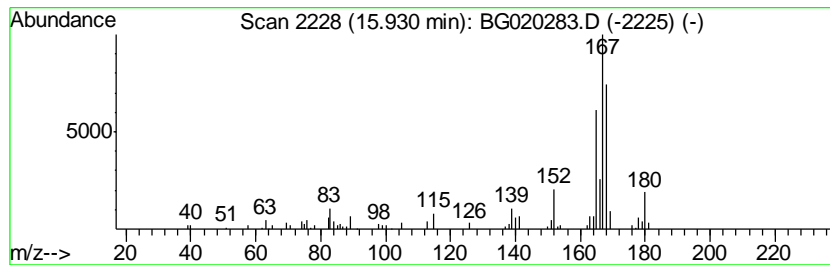
TIC Library : C:\DATABASE\NIST02.L  
 TIC Integration Parameters: LSCINT.P

\*\*\*\*\*  
 Peak Number 24 Nordiphenamid Concentration Rank 12

R.T.	EstConc	Area	Relative to ISTD	R.T.
15.93	8.41 ng/ul	105046	Acenaphthene-d10	14.73

Hit#	of	Tentative ID	MW	MolForm	CAS#	Qual
1	5	Nordiphenamid	225	C15H15NO	000954-21-2	72
2		Diphenylmethane	168	C13H12	000101-81-5	58
3		Diphenylmethane	168	C13H12	000101-81-5	58
4		Fluorene, 2,4a-dihydro-	168	C13H12	059247-36-8	58
5		1,1'-Biphenyl, 2-methyl-	168	C13H12	000643-58-3	55



Data Path : Z:\HPCHEM1\BNA G\DATA\BG121915\  
 Data File : BG020283.D  
 Acq On : 18 Dec 2015 20:13  
 Operator : UM/SJ  
 Sample : G4768-04  
 Misc :  
 ALS Vial : 16 Sample Multiplier: 1

Instrument :  
 BNA\_G  
 ClientSampleID :  
 D9N28

Quant Method : Z:\HPCHEM1\BNA G\METHODS\SOM02.2-EPA-BG121415.M  
 Quant Title : SVOA CALIBRATION

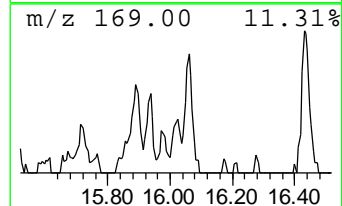
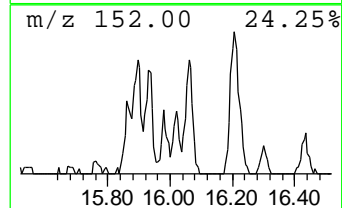
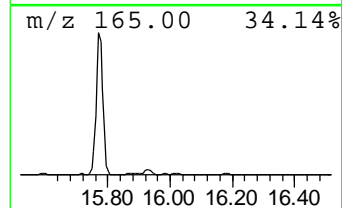
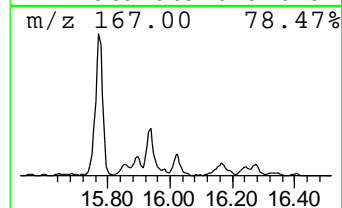
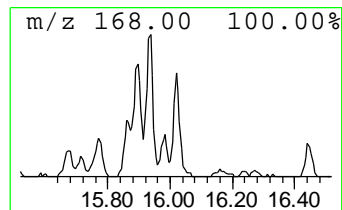
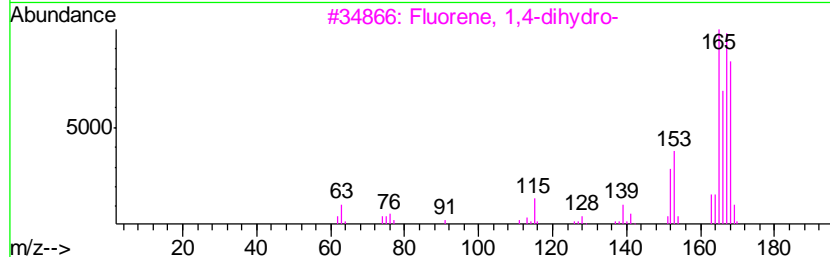
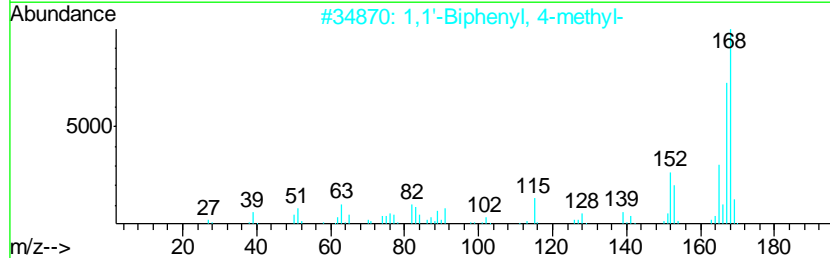
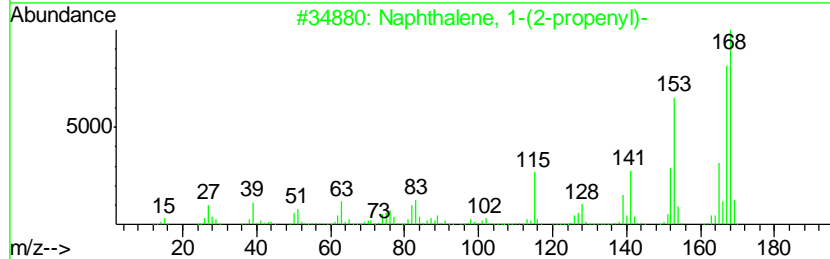
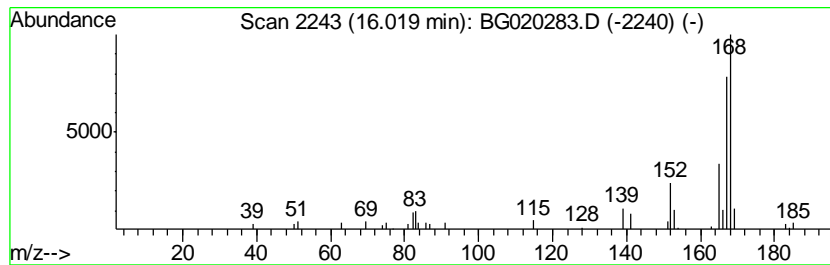
TIC Library : C:\DATABASE\NIST02.L  
 TIC Integration Parameters: LSCINT.P

\*\*\*\*\*  
 Peak Number 26 Naphthalene, 1-(2-propenyl)- Concentration Rank 38

R.T.	EstConc	Area	Relative to ISTD	R.T.
16.02	3.27 ng/ul	40867	Acenaphthene-d10	14.73

Hit#	of	Tentative ID	MW	MolForm	CAS#	Qual
1	5	Naphthalene, 1-(2-propenyl)-	168	C13H12	002489-86-3	83
2		1,1'-Biphenyl, 4-methyl-	168	C13H12	000644-08-6	80
3		Fluorene, 1,4-dihydro-	168	C13H12	041593-21-9	72
4		1,1'-Biphenyl, 2-methyl-	168	C13H12	000643-58-3	72
5		Diphenylmethane	168	C13H12	000101-81-5	64





Data Path : Z:\HPCHEM1\BNA G\DATA\BG121915\  
 Data File : BG020283.D  
 Acq On : 18 Dec 2015 20:13  
 Operator : UM/SJ  
 Sample : G4768-04  
 Misc :  
 ALS Vial : 16 Sample Multiplier: 1

Instrument :  
 BNA\_G  
 ClientSampleID :  
 D9N28

Quant Method : Z:\HPCHEM1\BNA G\METHODS\SOM02.2-EPA-BG121415.M  
 Quant Title : SVOA CALIBRATION

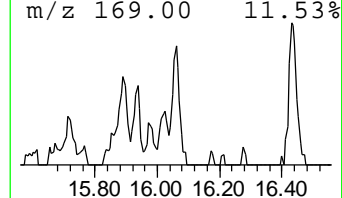
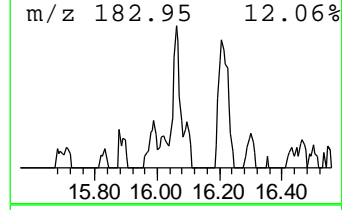
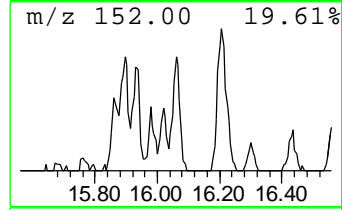
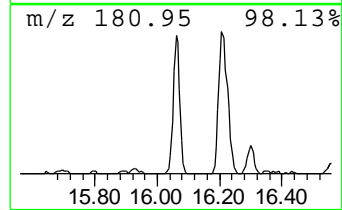
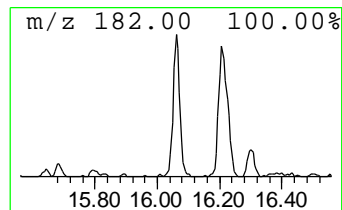
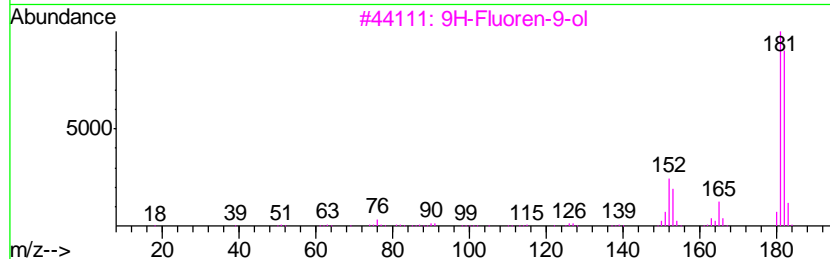
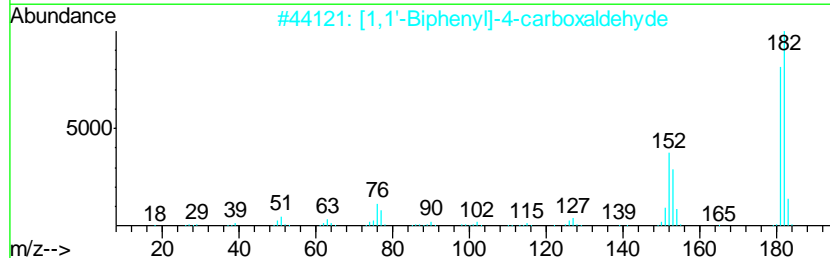
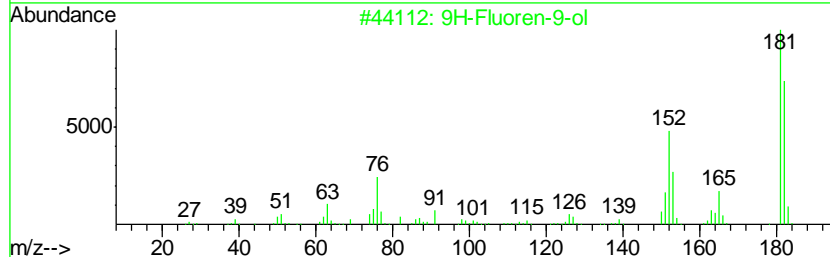
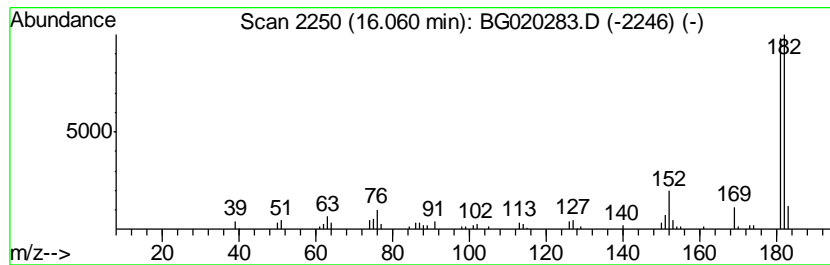
TIC Library : C:\DATABASE\NIST02.L  
 TIC Integration Parameters: LSCINT.P

\*\*\*\*\*  
 Peak Number 27 9H-Fluoren-9-ol Concentration Rank 18

R.T.	EstConc	Area	Relative to ISTD	R.T.
16.06	6.37 ng/ul	79610	Acenaphthene-d10	14.73

Hit#	of	Tentative ID	MW	MolForm	CAS#	Qual
1	5	9H-Fluoren-9-ol	182	C13H10O	001689-64-1	86
2		[1,1'-Biphenyl]-4-carboxaldehyde	182	C13H10O	003218-36-8	81
3		9H-Fluoren-9-ol	182	C13H10O	001689-64-1	80
4		Dibenzofuran, 4-methyl-	182	C13H10O	007320-53-8	70
5		3-(2-Naphthyl)acrylaldehyde	182	C13H10O	020884-05-3	64



Data Path : Z:\HPCHEM1\BNA G\DATA\BG121915\  
 Data File : BG020283.D  
 Acq On : 18 Dec 2015 20:13  
 Operator : UM/SJ  
 Sample : G4768-04  
 Misc :  
 ALS Vial : 16 Sample Multiplier: 1

Instrument :  
 BNA\_G  
 ClientSampleId :  
 D9N28

Quant Method : Z:\HPCHEM1\BNA G\METHODS\SOM02.2-EPA-BG121415.M  
 Quant Title : SVOA CALIBRATION

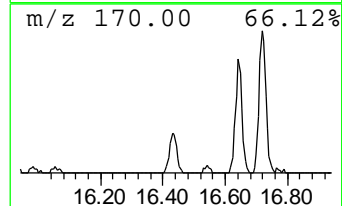
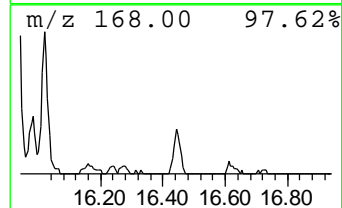
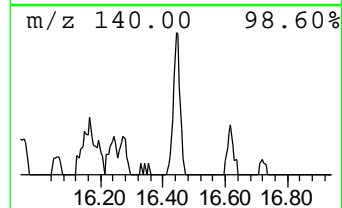
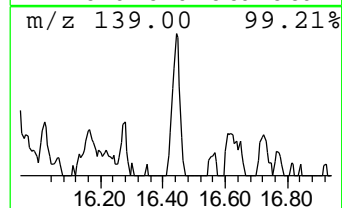
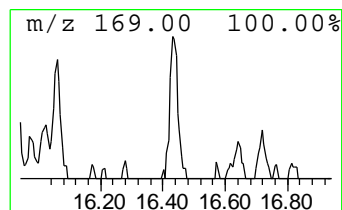
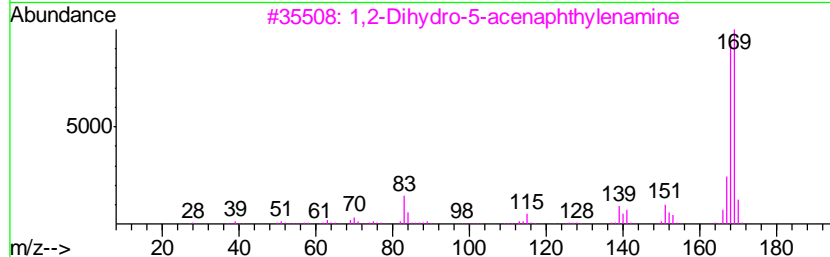
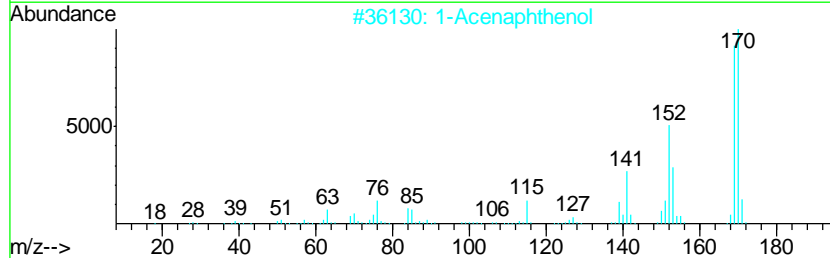
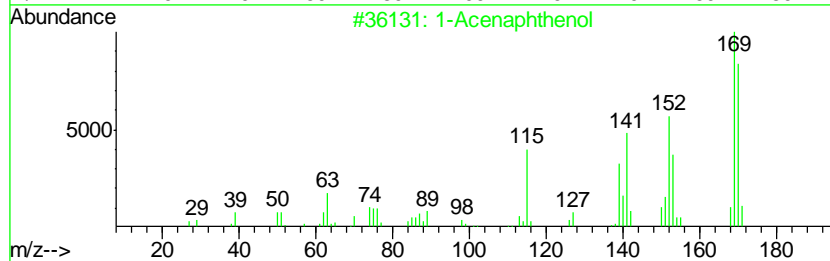
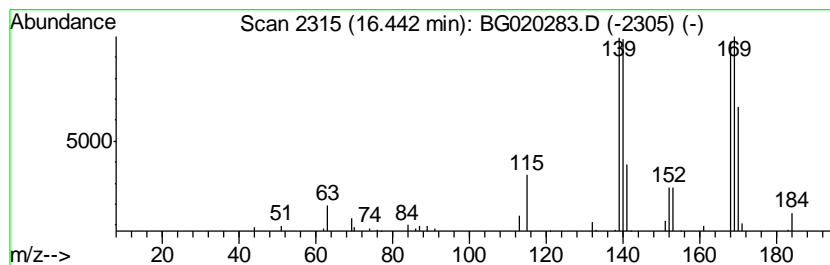
TIC Library : C:\DATABASE\NIST02.L  
 TIC Integration Parameters: LSCINT.P

\*\*\*\*\*  
 Peak Number 29 1-Acenaphthenol Concentration Rank 49

R.T.	EstConc	Area	Relative to ISTD	R.T.
16.44	2.15 ng/ul	37414	Phenanthrene-d10	17.47

Hit#	of	Tentative ID	MW	MolForm	CAS#	Qual
1	5	1-Acenaphthenol	170	C12H10O	006306-07-6	93
2		1-Acenaphthenol	170	C12H10O	006306-07-6	46
3		1,2-Dihydro-5-acenaphthylenamine	169	C12H11N	004657-93-6	46
4		Naphthalene, 1-isocyanato-	169	C11H7NO	000086-84-0	30
5		1H-Imidazole, 1-(2-phenylethenyl...	170	C11H10N2	056382-62-8	30



Data Path : Z:\HPCHEM1\BNA G\DATA\BG121915\  
 Data File : BG020283.D  
 Acq On : 18 Dec 2015 20:13  
 Operator : UM/SJ  
 Sample : G4768-04  
 Misc :  
 ALS Vial : 16 Sample Multiplier: 1

Instrument :  
 BNA\_G  
 ClientSampled :  
 D9N28

Quant Method : Z:\HPCHEM1\BNA G\METHODS\SOM02.2-EPA-BG121415.M  
 Quant Title : SVOA CALIBRATION

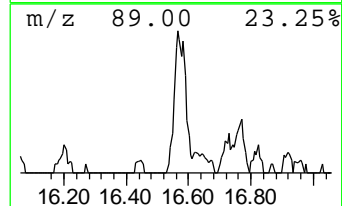
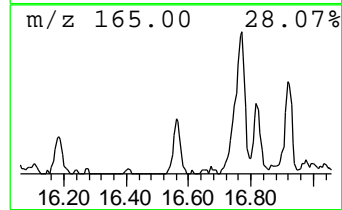
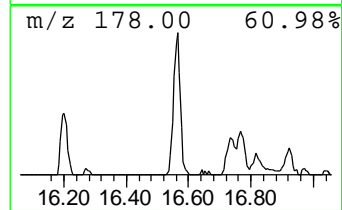
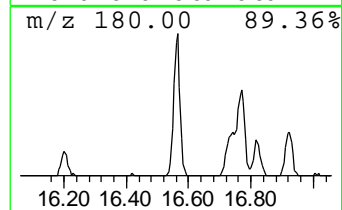
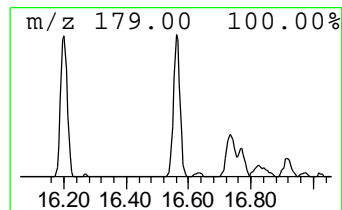
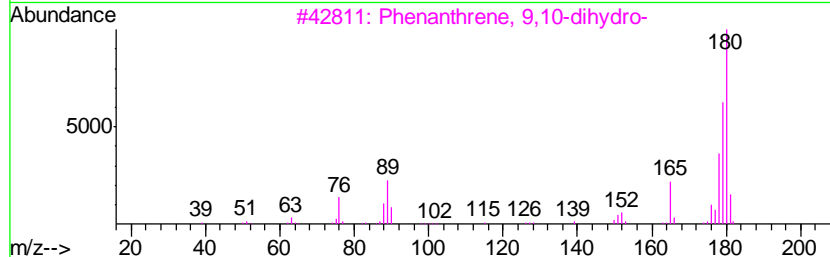
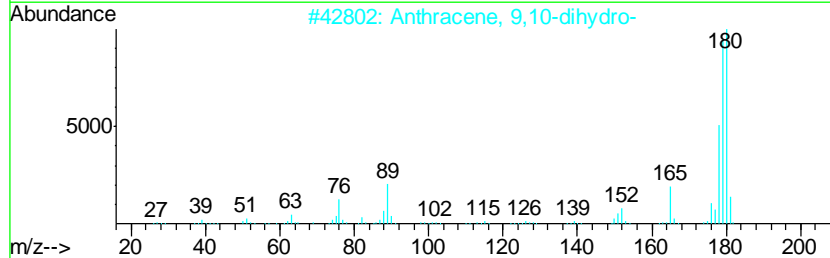
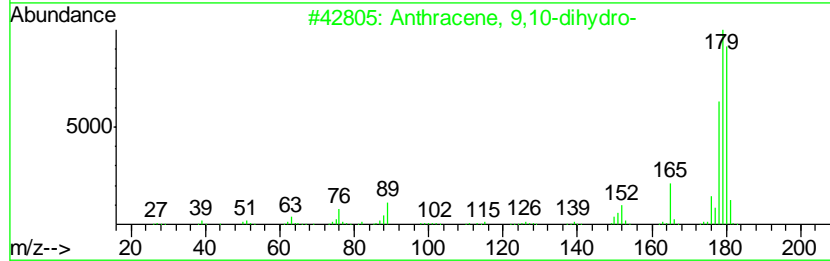
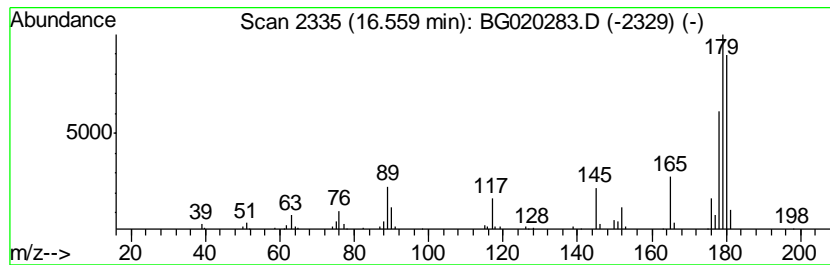
TIC Library : C:\DATABASE\NIST02.L  
 TIC Integration Parameters: LSCINT.P

\*\*\*\*\*  
 Peak Number 30 Anthracene, 9,10-dihydro- Concentration Rank 17

R.T.	EstConc	Area	Relative to ISTD	R.T.
16.56	6.43 ng/ul	111667	Phenanthrene-d10	17.47

Hit#	of	Tentative ID	MW	MolForm	CAS#	Qual
1	5	Anthracene, 9,10-dihydro-	180	C14H12	000613-31-0	96
2		Anthracene, 9,10-dihydro-	180	C14H12	000613-31-0	86
3		Phenanthrene, 9,10-dihydro-	180	C14H12	000776-35-2	70
4		cis-Stilbene	180	C14H12	000645-49-8	70
5		(E)-Stilbene	180	C14H12	000103-30-0	64



Data Path : Z:\HPCHEM1\BNA\_G\DATA\BG121915\  
 Data File : BG020283.D  
 Acq On : 18 Dec 2015 20:13  
 Operator : UM/SJ  
 Sample : G4768-04  
 Misc :  
 ALS Vial : 16 Sample Multiplier: 1

Instrument :  
 BNA\_G  
 ClientSampleId :  
 D9N28

Quant Method : Z:\HPCHEM1\BNA\_G\METHODS\SOM02.2-EPA-BG121415.M  
 Quant Title : SVOA CALIBRATION

TIC Library : C:\DATABASE\NIST02.L  
 TIC Integration Parameters: LSCINT.P

TIC Top Hit name	RT	EstConc	Units	Response	--Internal Standard--			
					#	RT	Resp	Conc
Butane, 2-methoxy...	3.19	7.5	ng/ul	35402	1	8.09	94803	20.0
Benzofuran	7.81	3.3	ng/ul	15656	1	8.09	94803	20.0
Indane	8.47	16.9	ng/ul	80278	1	8.09	94803	20.0
Indene	8.63	51.4	ng/ul	243627	1	8.09	94803	20.0
Cinnamaldehyde, (E)-	9.58	3.5	ng/ul	26203	2	10.91	149386	20.0
2,4-Dimethylstyrene	10.30	6.5	ng/ul	48421	2	10.91	149386	20.0
2-Methylindene	10.41	3.1	ng/ul	23340	2	10.91	149386	20.0
2-Benzothiophene #	11.08	27.8	ng/ul	207338	2	10.91	149386	20.0
3-Methylbenzothio...	12.46	3.8	ng/ul	27994	2	10.91	149386	20.0
Naphthalene, 1-me...	12.78	95.2	ng/ul	711367	2	10.91	149386	20.0
Naphthalene, 1-et...	13.76	6.3	ng/ul	78544	3	14.73	249923	20.0
Naphthalene, 1,6-...	13.90	7.8	ng/ul	96860	3	14.73	249923	20.0
Naphthalene, 2,3-...	14.04	11.1	ng/ul	138531	3	14.73	249923	20.0
Naphthalene, 1,5-...	14.28	4.0	ng/ul	50663	3	14.73	249923	20.0
2-Naphthalenecarb...	14.86	28.3	ng/ul	353156	3	14.73	249923	20.0
o-Hydroxybiphenyl	15.00	4.0	ng/ul	49699	3	14.73	249923	20.0
1-Isopropenyl naph...	15.03	3.5	ng/ul	43328	3	14.73	249923	20.0
2-Propenoyl chlor...	15.20	2.2	ng/ul	28017	3	14.73	249923	20.0
Nordiphenamid	15.93	8.4	ng/ul	105046	3	14.73	249923	20.0
Naphthalene, 1-(2...	16.02	3.3	ng/ul	40867	3	14.73	249923	20.0
9H-Fluoren-9-ol	16.06	6.4	ng/ul	79610	3	14.73	249923	20.0
1-Acenaphthenol	16.44	2.1	ng/ul	37414	4	17.47	347599	20.0
Anthracene, 9,10-...	16.56	6.4	ng/ul	111667	4	17.47	347599	20.0