

Data Path : Z:\HPCHEM1\BNA G\Data\BG121915\
 Data File : BG020307.D
 Acq On : 19 Dec 2015 11:59
 Operator : UM/SJ
 Sample : PB87277TB
 Misc :
 ALS Vial : 38 Sample Multiplier: 1

Instrument :
 BNA_G
 ClientSampleId :
 SLEB06

Integration Parameters: LSCINT.P

Integrator: RTE
 Smoothing : OFF Filtering: 5
 Sampling : 1 Min Area: 0.1 % of largest Peak
 Start Thrs: 0.2 Max Peaks: 100
 Stop Thrs : 0 Peak Location: TOP

If leading or trailing edge < 100 prefer < Baseline drop else tangent >
 Peak separation: 5

Method : Z:\HPCHEM1\BNA_G\METHODS\SOM02.2-EPA-BG121415.M
 Title : SVOA CALIBRATION

Signal : TIC

peak #	R.T. min	first scan	max scan	last scan	PK TY	peak height	corr. area	corr. % max.	% of total
1	3.115	42	47	56	rVV2	15922	29038	3.73%	0.445%
2	3.192	57	60	66	rVB2	4135	5571	0.71%	0.085%
3	3.462	103	106	111	rVB	4019	5084	0.65%	0.078%
4	3.879	173	177	178	rVB4	783	915	0.12%	0.014%
5	7.240	742	749	757	rBV	83273	133851	17.17%	2.049%
6	7.410	772	778	787	rVB	66282	104517	13.41%	1.600%
7	7.616	807	813	821	rBV	80735	135472	17.38%	2.074%
8	8.092	887	894	901	rBB	53873	90033	11.55%	1.378%
9	8.791	1006	1013	1021	rBV	109811	182055	23.36%	2.787%
10	9.255	1086	1092	1102	rVB2	81648	143967	18.47%	2.204%
11	9.984	1210	1216	1225	rVB	70505	124452	15.97%	1.905%
12	10.518	1301	1307	1320	rBV	112597	196161	25.17%	3.003%
13	10.906	1366	1373	1382	rBB	78135	136593	17.52%	2.091%
14	11.035	1389	1395	1405	rVB	98707	177094	22.72%	2.711%
15	12.487	1638	1642	1646	rBB	1629	2339	0.30%	0.036%
16	14.120	1913	1920	1927	rBV	236185	337164	43.25%	5.162%
17	14.420	1964	1971	1978	rBV	248779	381540	48.95%	5.842%
18	14.725	2015	2023	2032	rBB2	138285	222929	28.60%	3.413%
19	14.907	2048	2054	2067	rBV	96630	154946	19.88%	2.372%
20	15.712	2185	2191	2199	rVB	352989	512783	65.78%	7.851%
21	15.824	2204	2210	2221	rVV	86970	128869	16.53%	1.973%
22	15.953	2227	2232	2238	rVB3	2903	4217	0.54%	0.065%
23	17.252	2449	2453	2458	rBV2	903	1427	0.18%	0.022%
24	17.469	2482	2490	2496	rBV2	194058	299006	38.36%	4.578%
25	17.563	2500	2506	2514	rVV	387458	594585	76.28%	9.104%
26	18.926	2732	2738	2740	rVB2	418	798	0.10%	0.012%
27	19.478	2829	2832	2836	rBV2	4190	6141	0.79%	0.094%
28	19.514	2836	2838	2842	rVB	1643	1913	0.25%	0.029%
29	19.743	2870	2877	2881	rBV	3205	5051	0.65%	0.077%
30	19.849	2887	2895	2905	rBV	528410	752653	96.56%	11.524%
31	20.260	2961	2965	2966	rBV2	673	883	0.11%	0.014%
32	20.436	2992	2995	2998	rVB2	977	1133	0.15%	0.017%
33	20.465	2998	3000	3004	rBV4	743	1126	0.14%	0.017%
34	20.512	3004	3008	3010	rVV3	1077	954	0.12%	0.015%

Data Path : Z:\HPCHEM1\BNA G\Data\BG121915\
 Data File : BG020307.D
 Acq On : 19 Dec 2015 11:59
 Operator : UM/SJ
 Sample : PB87277TB
 Misc :
 ALS Vial : 38 Sample Multiplier: 1

Instrument :
 BNA_G
 ClientSampleId :
 SLEB06

Integration Parameters: LSCINT.P

Integrator: RTE
 Smoothing : OFF
 Sampling : 1
 Start Thrs: 0.2
 Stop Thrs : 0

Filtering: 5
 Min Area: 0.1 % of largest Peak
 Max Peaks: 100
 Peak Location: TOP

If leading or trailing edge < 100 prefer < Baseline drop else tangent >
 Peak separation: 5

Method : Z:\HPCHEM1\BNA G\METHODS\SOM02.2-EPA-BG121415.M
 Title : SVOA CALIBRATION

35	20.795	3053	3056	3059	rBV2	828	1077	0.14%	0.016%
36	20.965	3082	3085	3086	rBV2	891	977	0.13%	0.015%
37	20.977	3086	3087	3091	rVV3	779	851	0.11%	0.013%
38	21.312	3142	3144	3147	rVV3	1019	1158	0.15%	0.018%
39	21.664	3202	3204	3209	rVB4	1064	1737	0.22%	0.027%
40	21.740	3210	3217	3228	rBV	272365	431737	55.39%	6.610%
41	21.952	3251	3253	3254	rBV2	1257	854	0.11%	0.013%
42	22.005	3259	3262	3264	rVV3	1017	1123	0.14%	0.017%
43	22.058	3269	3271	3273	rVV3	969	882	0.11%	0.014%
44	22.105	3276	3279	3281	rVV	886	869	0.11%	0.013%
45	22.352	3320	3321	3323	rBV2	998	803	0.10%	0.012%
46	22.528	3349	3351	3355	rVB5	1131	1333	0.17%	0.020%
47	22.939	3420	3421	3423	rBV	1277	816	0.10%	0.012%
48	23.151	3455	3457	3461	rVB3	1518	1958	0.25%	0.030%
49	23.256	3473	3475	3478	rVB3	1328	1403	0.18%	0.021%
50	23.515	3517	3519	3522	rBV4	1131	1244	0.16%	0.019%
51	23.873	3576	3580	3587	rVB6	3443	6169	0.79%	0.094%
52	24.050	3608	3610	3612	rVB2	1161	827	0.11%	0.013%
53	24.367	3662	3664	3668	rVB3	884	1001	0.13%	0.015%
54	24.525	3687	3691	3693	rBV4	1325	1424	0.18%	0.022%
55	24.790	3724	3736	3753	rBV	265569	779498	100.00%	11.935%
56	25.013	3764	3774	3787	rBV	129064	366433	47.01%	5.610%
57	25.189	3802	3804	3805	rVB2	1605	867	0.11%	0.013%
58	25.354	3831	3832	3835	rVB4	1420	1150	0.15%	0.018%
59	25.460	3847	3850	3851	rBV2	918	1111	0.14%	0.017%
60	25.689	3887	3889	3892	rBV3	805	1104	0.14%	0.017%
61	25.748	3894	3899	3901	rBV4	1209	1926	0.25%	0.029%
62	25.965	3933	3936	3937	rBV2	1103	930	0.12%	0.014%
63	26.000	3940	3942	3945	rBV4	827	897	0.12%	0.014%
64	26.370	4004	4005	4007	rBV2	958	814	0.10%	0.012%
65	26.735	4065	4067	4070	rBV2	904	1077	0.14%	0.016%
66	26.999	4110	4112	4115	rBV3	876	1070	0.14%	0.016%
67	27.240	4151	4153	4156	rBV2	897	1318	0.17%	0.020%
68	27.328	4167	4168	4175	rVB4	878	1053	0.14%	0.016%
69	27.440	4185	4187	4190	rBV2	1086	918	0.12%	0.014%
70	27.763	4240	4242	4247	rVB6	965	1342	0.17%	0.021%
71	27.898	4264	4265	4269	rVB4	1212	811	0.10%	0.012%

Data Path : Z:\HPCHEM1\BNA G\Data\BG121915\
 Data File : BG020307.D
 Acq On : 19 Dec 2015 11:59
 Operator : UM/SJ
 Sample : PB87277TB
 Misc :
 ALS Vial : 38 Sample Multiplier: 1

Instrument :
 BNA_G
 ClientSampleId :
 SLEB06

Integration Parameters: LSCINT.P

Integrator: RTE
 Smoothing : OFF
 Sampling : 1
 Start Thrs: 0.2
 Stop Thrs : 0

Filtering: 5
 Min Area: 0.1 % of largest Peak
 Max Peaks: 100
 Peak Location: TOP

If leading or trailing edge < 100 prefer < Baseline drop else tangent >
 Peak separation: 5

Method : Z:\HPCHEM1\BNA G\METHODS\SOM02.2-EPA-BG121415.M
 Title : SVOA CALIBRATION

72	28.080	4294	4296	4299	rBV4	1238	1398	0.18%	0.021%
73	28.174	4310	4312	4315	rBV3	965	1019	0.13%	0.016%
74	28.239	4321	4323	4327	rVB3	1204	1360	0.17%	0.021%
75	28.268	4327	4328	4331	rBV2	1237	1092	0.14%	0.017%
76	28.327	4336	4338	4341	rBV3	998	1090	0.14%	0.017%
77	28.456	4358	4360	4363	rVB4	1768	1776	0.23%	0.027%
78	28.491	4363	4366	4367	rBV2	1387	1456	0.19%	0.022%
79	28.779	4413	4415	4417	rBV3	945	860	0.11%	0.013%
80	28.997	4450	4452	4455	rBV4	1395	1357	0.17%	0.021%
81	29.185	4481	4484	4485	rBV2	975	1201	0.15%	0.018%
82	29.232	4490	4492	4495	rVB2	848	943	0.12%	0.014%
83	29.619	4556	4558	4559	rVB2	1617	972	0.12%	0.015%
84	29.649	4561	4563	4565	rVV2	1444	1340	0.17%	0.021%
85	29.737	4577	4578	4581	rVB	1207	798	0.10%	0.012%
86	29.819	4588	4592	4595	rBV5	1031	1702	0.22%	0.026%
87	29.960	4614	4616	4618	rBV3	889	1033	0.13%	0.016%
88	30.248	4663	4665	4668	rBV2	697	855	0.11%	0.013%
89	30.354	4681	4683	4687	rBV5	823	974	0.12%	0.015%
90	30.413	4691	4693	4695	rVB2	1339	1279	0.16%	0.020%
91	30.448	4697	4699	4702	rVB2	1562	1338	0.17%	0.020%
92	30.718	4743	4745	4748	rVB3	1666	1379	0.18%	0.021%
93	30.930	4778	4781	4783	rBV3	1522	1775	0.23%	0.027%
94	31.241	4832	4834	4836	rBV2	1541	1277	0.16%	0.020%
95	31.300	4842	4844	4848	rVB3	904	1333	0.17%	0.020%
96	31.676	4906	4908	4910	rBV2	974	867	0.11%	0.013%
97	31.699	4910	4912	4914	rVB2	1470	817	0.10%	0.013%
98	31.729	4914	4917	4920	rBV4	858	1067	0.14%	0.016%
99	32.340	5019	5021	5026	rBV5	1220	2140	0.27%	0.033%
100	32.487	5044	5046	5048	rBV3	918	1009	0.13%	0.015%

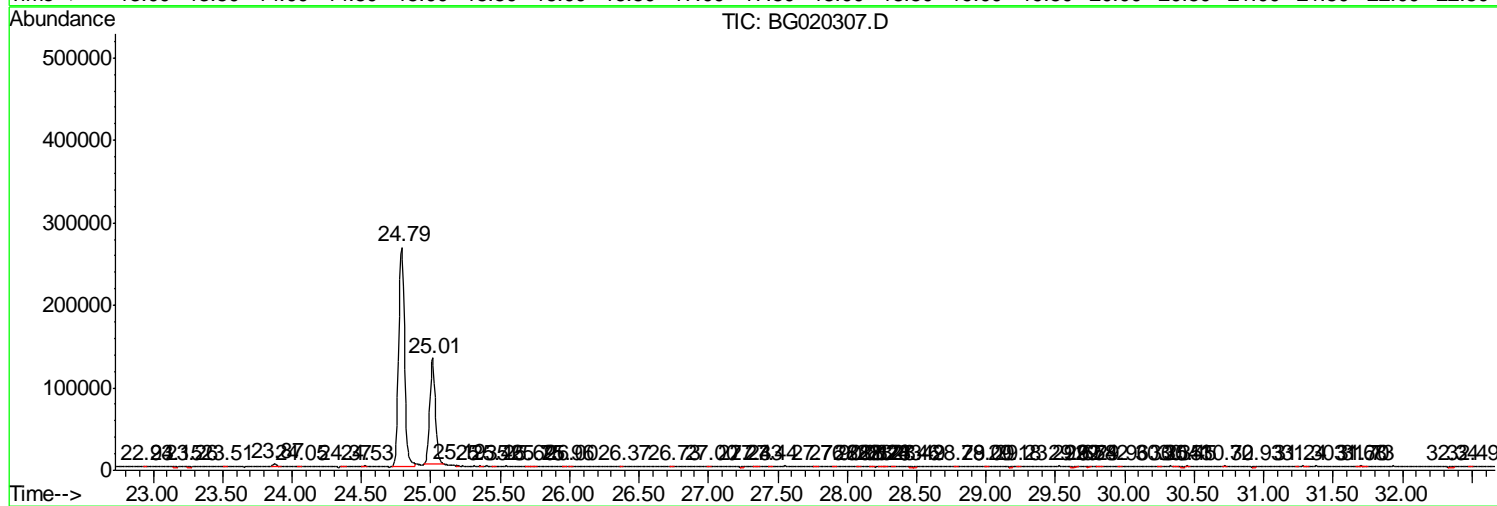
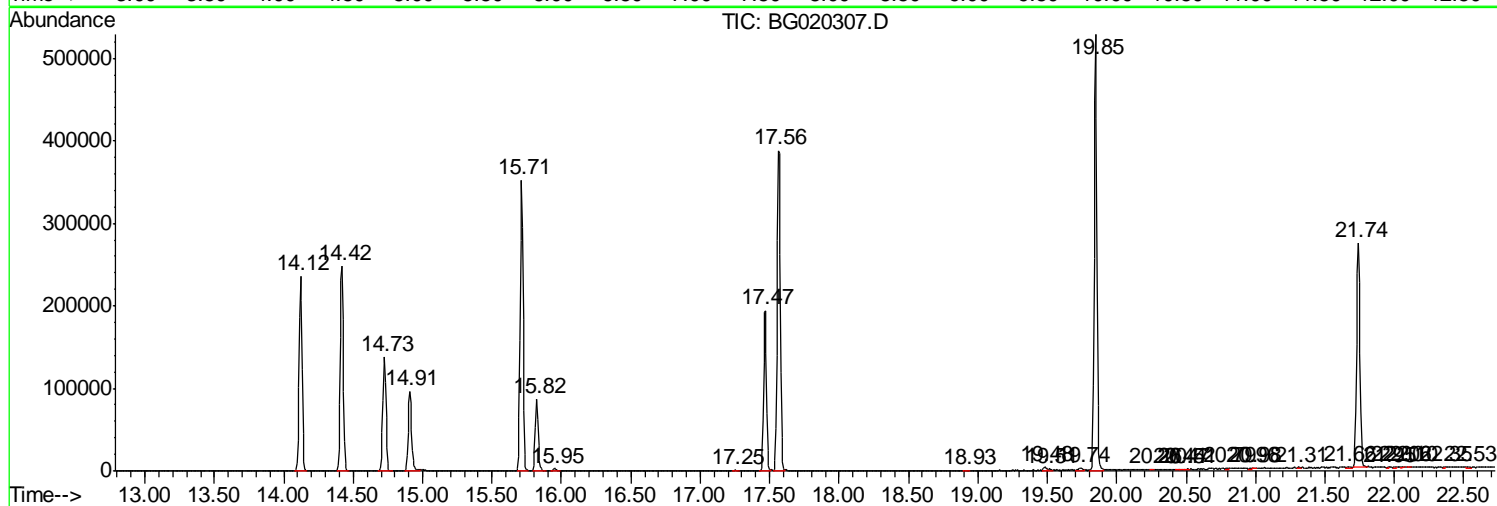
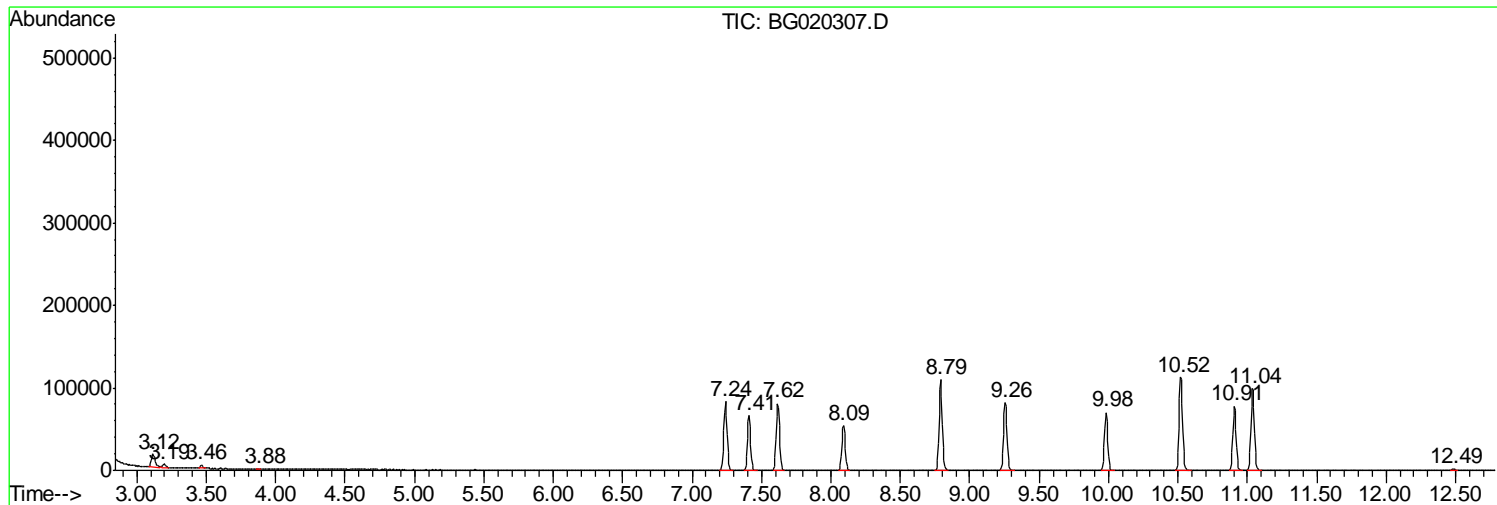
Sum of corrected areas: 6531329

Data Path : Z:\HPCHEM1\BNA G\Data\BG121915\
 Data File : BG020307.D
 Acq On : 19 Dec 2015 11:59
 Operator : UM/SJ
 Sample : PB87277TB
 Misc :
 ALS Vial : 38 Sample Multiplier: 1

Instrument :
 BNA_G
 ClientSampled :
 SLEB06

Quant Method : Z:\HPCHEM1\BNA G\METHODS\SOM02.2-EPA-BG121415.M
 Quant Title : SVOA CALIBRATION

TIC Library : C:\DATABASE\NIST02.L
 TIC Integration Parameters: LSCINT.P



Data Path : Z:\HPCHEM1\BNA_G\Data\BG121915\
Data File : BG020307.D
Acq On : 19 Dec 2015 11:59
Operator : UM/SJ
Sample : PB87277TB
Misc :
ALS Vial : 38 Sample Multiplier: 1

Instrument :
BNA_G
ClientSampleId :
SLEB06

Quant Method : Z:\HPCHEM1\BNA_G\METHODS\SOM02.2-EPA-BG121415.M
Quant Title : SVOA CALIBRATION

TIC Library : C:\DATABASE\NIST02.L
TIC Integration Parameters: LSCINT.P

No Library Search Compounds Detected

Data Path : Z:\HPCHEM1\BNA_G\Data\BG121915\
Data File : BG020307.D
Acq On : 19 Dec 2015 11:59
Operator : UM/SJ
Sample : PB87277TB
Misc :
ALS Vial : 38 Sample Multiplier: 1

Instrument :
BNA_G
ClientSampleId :
SLEB06

Quant Method : Z:\HPCHEM1\BNA_G\METHODS\SOM02.2-EPA-BG121415.M
Quant Title : SVOA CALIBRATION

TIC Library : C:\DATABASE\NIST02.L
TIC Integration Parameters: LSCINT.P

TIC Top Hit name	RT	EstConc	Units	Response	--Internal Standard--			
					#	RT	Resp	Conc
