

Data Path : Z:\HPCHEM1\BNA_G\DATA\BG121916\
 Data File : BG025335.D
 Acq On : 20 Dec 2016 2:18
 Operator : UM/SJ
 Sample : H6106-08
 Misc :
 ALS Vial : 19 Sample Multiplier: 1

Instrument :
 BNA_G
 ClientSampleId :
 DA8X5

Integration Parameters: LSCINT.P

Integrator: RTE
 Smoothing : ON
 Sampling : 1
 Start Thrs: 0.1
 Stop Thrs : 0

Filtering: 5
 Min Area: 0.1 % of largest Peak
 Max Peaks: 100
 Peak Location: TOP

If leading or trailing edge < 100 prefer < Baseline drop else tangent >
 Peak separation: 1

Method : Z:\HPCHEM1\BNA_G\METHODS\SOM02.2-EPA-BG113016.M
 Title : SVOA CALIBRATION

Signal : TIC

peak #	R.T. min	first scan	max scan	last scan	PK TY	peak height	corr. area	corr. % max.	% of total
1	2.879	3	7	19	rVB3	59866	115831	4.69%	0.547%
2	3.203	57	62	69	rVB5	16859	35269	1.43%	0.167%
3	3.808	164	165	169	rBV4	5032	5523	0.22%	0.026%
4	4.619	301	303	306	rVB3	6059	6124	0.25%	0.029%
5	4.666	306	311	313	rBV5	3632	6456	0.26%	0.031%
6	4.718	318	320	327	rVB6	6564	11701	0.47%	0.055%
7	4.777	327	330	332	rBV3	4186	6146	0.25%	0.029%
8	5.006	366	369	373	rBV5	6198	8261	0.33%	0.039%
9	5.118	383	388	391	rBV5	4397	6494	0.26%	0.031%
10	5.142	391	392	397	rVB3	5662	5865	0.24%	0.028%
11	5.500	450	453	457	rBV2	7035	11045	0.45%	0.052%
12	5.582	463	467	470	rBV4	3397	5853	0.24%	0.028%
13	5.629	470	475	479	rVB4	3234	5605	0.23%	0.026%
14	5.876	511	517	519	rBV5	4584	9589	0.39%	0.045%
15	5.964	528	532	538	rVB4	4321	10197	0.41%	0.048%
16	6.029	538	543	544	rBV4	3930	5713	0.23%	0.027%
17	6.411	603	608	611	rBV4	7404	10786	0.44%	0.051%
18	7.380	767	773	788	rVB4	42555	105639	4.28%	0.499%
19	7.533	793	799	811	rVV	185449	324720	13.15%	1.534%
20	7.639	811	817	821	rVB5	6033	11093	0.45%	0.052%
21	7.750	830	836	846	rVB	187650	346738	14.05%	1.638%
22	8.156	902	905	909	rBV5	6184	9337	0.38%	0.044%
23	8.220	909	916	926	rVV2	211492	377566	15.29%	1.784%
24	8.749	1003	1006	1015	rVV7	5428	9759	0.40%	0.046%
25	8.937	1030	1038	1049	rBV3	109768	230145	9.32%	1.087%
26	9.196	1078	1082	1087	rVB4	4650	8770	0.36%	0.041%
27	9.401	1107	1117	1127	rBV	263064	510878	20.69%	2.414%
28	9.542	1139	1141	1146	rVV4	4451	5728	0.23%	0.027%
29	9.836	1187	1191	1194	rBV2	4690	7773	0.31%	0.037%
30	10.130	1232	1241	1253	rVV3	245165	467860	18.95%	2.211%
31	10.206	1253	1254	1260	rVB4	5053	5950	0.24%	0.028%
32	10.283	1264	1267	1274	rBV3	5853	6443	0.26%	0.030%
33	10.676	1327	1334	1352	rBV2	246830	570125	23.09%	2.694%
34	11.052	1388	1398	1410	rBV	271083	535164	21.68%	2.529%

Data Path : Z:\HPCHEM1\BNA_G\DATA\BG121916\
 Data File : BG025335.D
 Acq On : 20 Dec 2016 2:18
 Operator : UM/SJ
 Sample : H6106-08
 Misc :
 ALS Vial : 19 Sample Multiplier: 1

Instrument :
 BNA_G
 ClientSampleId :
 DA8X5

Integration Parameters: LSCINT.P

Integrator: RTE
 Smoothing : ON
 Sampling : 1
 Start Thrs: 0.1
 Stop Thrs : 0

Filtering: 5
 Min Area: 0.1 % of largest Peak
 Max Peaks: 100
 Peak Location: TOP

If leading or trailing edge < 100 prefer < Baseline drop else tangent >
 Peak separation: 1

Method : Z:\HPCHEM1\BNA_G\METHODS\SOM02.2-EPA-BG113016.M
 Title : SVOA CALIBRATION

35	11.217	1419	1426	1433	rVB6	12385	32816	1.33%	0.155%
36	11.293	1433	1439	1441	rBV3	3436	6053	0.25%	0.029%
37	11.916	1542	1545	1550	rVB3	3486	5821	0.24%	0.028%
38	12.962	1717	1723	1726	rBV6	6375	14767	0.60%	0.070%
39	13.079	1737	1743	1746	rBV6	7653	10492	0.43%	0.050%
40	13.197	1759	1763	1767	rBV4	5094	7969	0.32%	0.038%
41	13.297	1776	1780	1785	rVB3	4675	7228	0.29%	0.034%
42	13.420	1796	1801	1803	rBV2	4608	8544	0.35%	0.040%
43	13.467	1807	1809	1817	rVB4	5644	7467	0.30%	0.035%
44	13.538	1817	1821	1826	rVB4	4287	7945	0.32%	0.038%
45	13.737	1853	1855	1862	rBV4	5870	9165	0.37%	0.043%
46	13.814	1866	1868	1874	rVV2	5307	7098	0.29%	0.034%
47	13.861	1874	1876	1880	rVB3	5563	6009	0.24%	0.028%
48	14.137	1921	1923	1927	rBV3	6099	7234	0.29%	0.034%
49	14.237	1928	1940	1954	rVV	746619	1164090	47.16%	5.500%
50	14.413	1965	1970	1971	rBV3	6005	7738	0.31%	0.037%
51	14.442	1972	1975	1979	rVV4	6311	8541	0.35%	0.040%
52	14.542	1979	1992	2003	rVV	681891	1145211	46.39%	5.411%
53	14.724	2020	2023	2025	rBV3	4854	5523	0.22%	0.026%
54	14.848	2033	2044	2051	rBV	513354	835017	33.83%	3.945%
55	14.907	2051	2054	2061	rVB5	8540	13495	0.55%	0.064%
56	15.095	2078	2086	2093	rBV8	33095	86707	3.51%	0.410%
57	15.241	2108	2111	2115	rVB4	11719	17073	0.69%	0.081%
58	15.465	2146	2149	2152	rBV3	6922	9826	0.40%	0.046%
59	15.582	2163	2169	2171	rBV4	4293	8606	0.35%	0.041%
60	15.635	2174	2178	2183	rVB5	10617	13469	0.55%	0.064%
61	15.835	2204	2212	2219	rBV	960668	1573003	63.72%	7.432%
62	15.970	2229	2235	2249	rBV	326418	574796	23.28%	2.716%
63	16.070	2249	2252	2264	rVB7	16638	36285	1.47%	0.171%
64	16.417	2308	2311	2313	rVB2	5346	5783	0.23%	0.027%
65	16.458	2313	2318	2320	rBV4	4561	8873	0.36%	0.042%
66	16.605	2337	2343	2348	rVB7	9128	16961	0.69%	0.080%
67	16.710	2358	2361	2364	rBV4	6019	7992	0.32%	0.038%
68	16.757	2364	2369	2371	rVV5	7016	10638	0.43%	0.050%
69	16.775	2371	2372	2377	rVB3	10359	9679	0.39%	0.046%
70	16.887	2387	2391	2395	rVB4	6366	7422	0.30%	0.035%
71	17.028	2409	2415	2416	rBV3	3819	5512	0.22%	0.026%

Data Path : Z:\HPCHEM1\BNA_G\DATA\BG121916\
 Data File : BG025335.D
 Acq On : 20 Dec 2016 2:18
 Operator : UM/SJ
 Sample : H6106-08
 Misc :
 ALS Vial : 19 Sample Multiplier: 1

Instrument :
 BNA_G
 ClientSampleId :
 DA8X5

Integration Parameters: LSCINT.P

Integrator: RTE
 Smoothing : ON Filtering: 5
 Sampling : 1 Min Area: 0.1 % of largest Peak
 Start Thrs: 0.1 Max Peaks: 100
 Stop Thrs : 0 Peak Location: TOP

If leading or trailing edge < 100 prefer < Baseline drop else tangent >
 Peak separation: 1

Method : Z:\HPCHEM1\BNA_G\METHODS\SOM02.2-EPA-BG113016.M
 Title : SVOA CALIBRATION

72	17.069	2417	2422	2425	rVV4	3835	6315	0.26%	0.030%
73	17.145	2432	2435	2442	rVB6	5063	9566	0.39%	0.045%
74	17.221	2445	2448	2450	rVB3	4412	5785	0.23%	0.027%
75	17.274	2453	2457	2460	rBV4	6400	10391	0.42%	0.049%
76	17.386	2471	2476	2479	rVB5	6812	7975	0.32%	0.038%
77	17.480	2491	2492	2496	rVB2	7350	6411	0.26%	0.030%
78	17.592	2502	2511	2521	rBV	732548	1170570	47.42%	5.531%
79	17.692	2521	2528	2538	rVV	1177119	1885736	76.39%	8.910%
80	18.021	2580	2584	2587	rVB5	6917	11556	0.47%	0.055%
81	18.326	2632	2636	2640	rVB5	4132	5973	0.24%	0.028%
82	18.397	2646	2648	2651	rBV3	5396	5656	0.23%	0.027%
83	18.508	2664	2667	2672	rVB2	10795	17035	0.69%	0.080%
84	18.667	2693	2694	2699	rBV4	7792	12586	0.51%	0.059%
85	18.920	2733	2737	2739	rBV3	5827	8759	0.35%	0.041%
86	18.984	2743	2748	2751	rVB5	5240	6757	0.27%	0.032%
87	19.243	2790	2792	2794	rVB3	7830	6990	0.28%	0.033%
88	19.272	2795	2797	2801	rBV5	5603	7151	0.29%	0.034%
89	19.525	2838	2840	2842	rBV3	8043	8681	0.35%	0.041%
90	19.630	2856	2858	2864	rVB3	14072	24200	0.98%	0.114%
91	19.801	2884	2887	2890	rBV5	12094	16791	0.68%	0.079%
92	19.854	2893	2896	2903	rVB3	20305	30730	1.24%	0.145%
93	19.965	2907	2915	2923	rBV	1665738	2468627	100.00%	11.664%
94	21.704	3208	3211	3219	rVB10	15696	24366	0.99%	0.115%
95	21.881	3234	3241	3258	rVB	825753	1522789	61.69%	7.195%
96	25.065	3771	3783	3795	rBV3	824610	2463495	99.79%	11.640%
97	25.171	3798	3801	3809	rVB7	47902	93465	3.79%	0.442%
98	25.294	3812	3822	3837	rVB2	496415	1505891	61.00%	7.115%
99	26.346	3996	4001	4016	rVB10	46312	158055	6.40%	0.747%
100	29.495	4528	4537	4548	rVB10	41751	150802	6.11%	0.713%

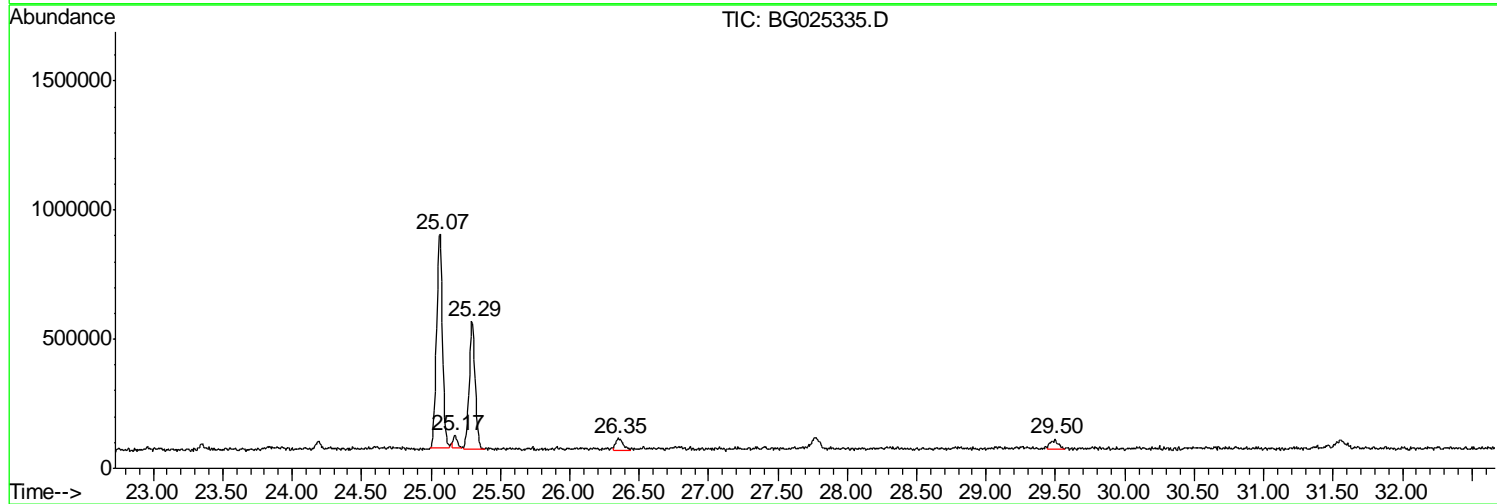
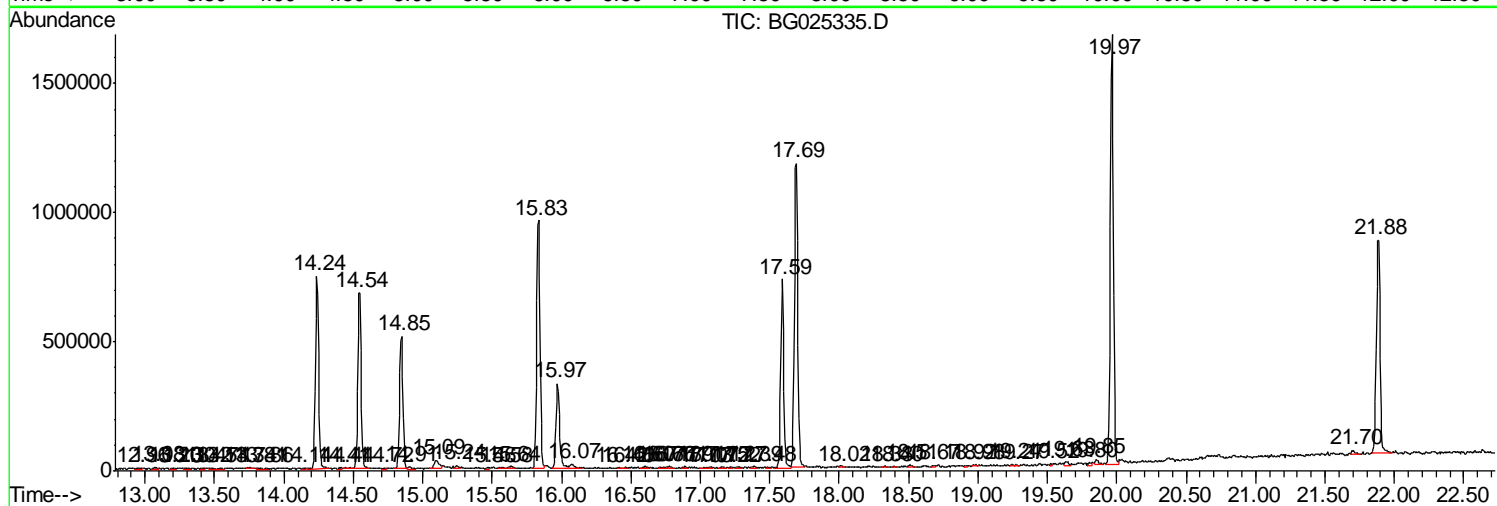
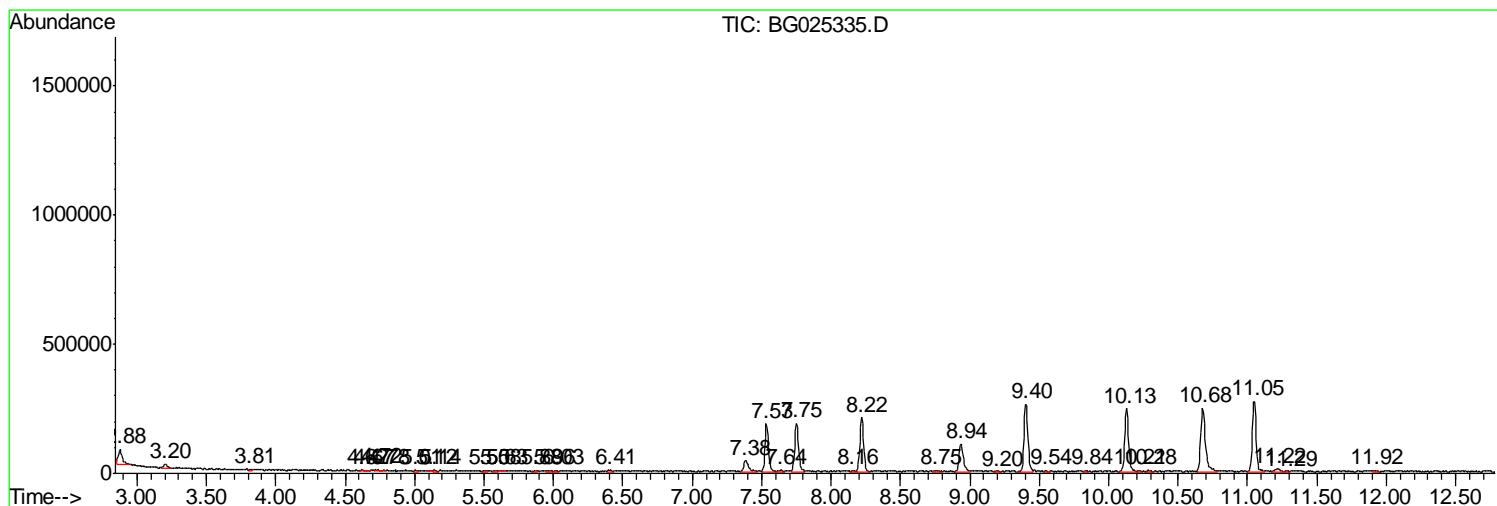
Sum of corrected areas: 21164098

Data Path : Z:\HPCHEM1\BNA_G\DATA\BG121916\
 Data File : BG025335.D
 Acq On : 20 Dec 2016 2:18
 Operator : UM/SJ
 Sample : H6106-08
 Misc :
 ALS Vial : 19 Sample Multiplier: 1

Instrument :
 BNA_G
 ClientSampleId :
 DA8X5

Quant Method : Z:\HPCHEM1\BNA_G\METHODS\SOM02.2-EPA-BG113016.M
 Quant Title : SVOA CALIBRATION

TIC Library : C:\DATABASE\NIST11.L
 TIC Integration Parameters: LSCINT.P



Data Path : Z:\HPCHEM1\BNA_G\DATA\BG121916\
 Data File : BG025335.D
 Acq On : 20 Dec 2016 2:18
 Operator : UM/SJ
 Sample : H6106-08
 Misc :
 ALS Vial : 19 Sample Multiplier: 1

Instrument :
 BNA_G
 ClientSampled :
 DA8X5

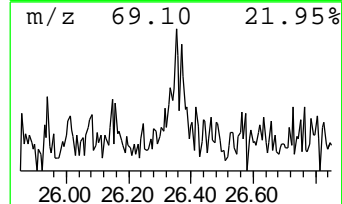
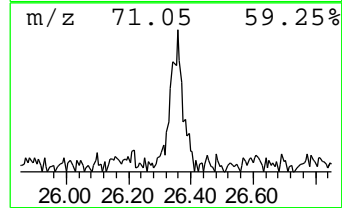
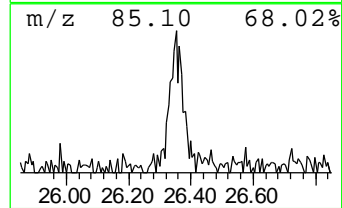
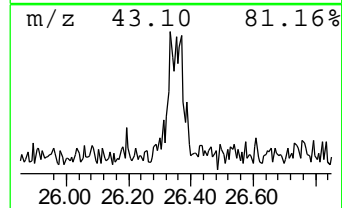
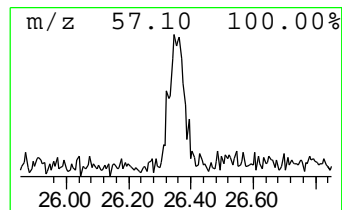
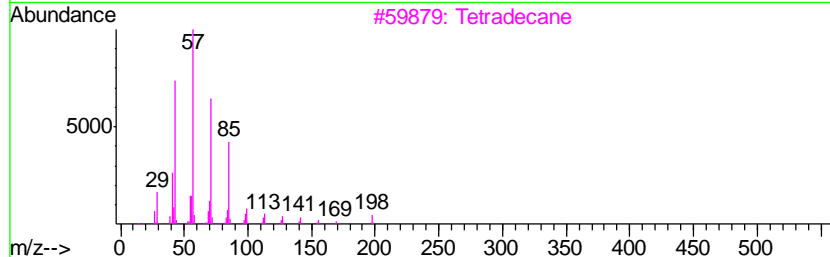
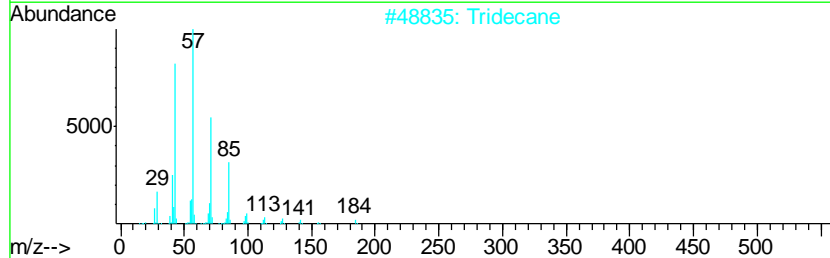
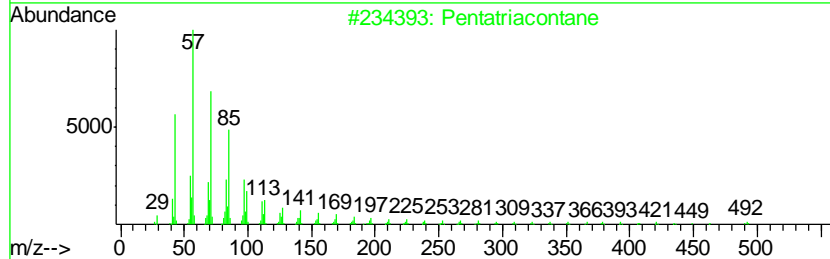
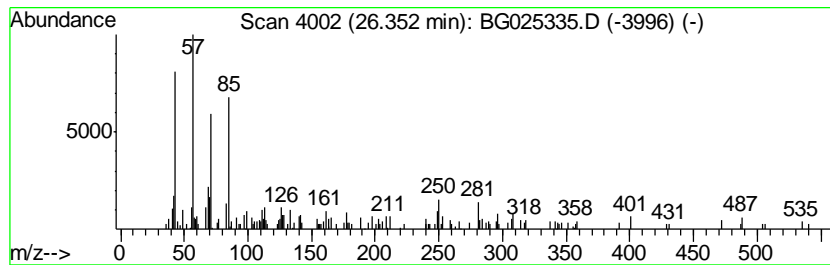
Quant Method : Z:\HPCHEM1\BNA_G\METHODS\SOM02.2-EPA-BG113016.M
 Quant Title : SVOA CALIBRATION

TIC Library : C:\DATABASE\NIST11.L
 TIC Integration Parameters: LSCINT.P

 Peak Number 2 (DEL) Alkane: Straight-Chai... Concentration Rank 2

R.T.	EstConc	Area	Relative to ISTD	R.T.
26.35	2.10 ng/ul	158055	Perylene-d12	25.29

Hit#	of	Tentative ID	MW	MolForm	CAS#	Qual
1	5	Pentatriacontane	493	C35H72	000630-07-9	58
2		Tridecane	184	C13H28	000629-50-5	55
3		Tetradecane	198	C14H30	000629-59-4	55
4		Tetradecane	198	C14H30	000629-59-4	49
5		Pentadecane	212	C15H32	000629-62-9	49



Data Path : Z:\HPCHEM1\BNA_G\DATA\BG121916\
 Data File : BG025335.D
 Acq On : 20 Dec 2016 2:18
 Operator : UM/SJ
 Sample : H6106-08
 Misc :
 ALS Vial : 19 Sample Multiplier: 1

Instrument :
 BNA_G
 ClientSampleID :
 DA8X5

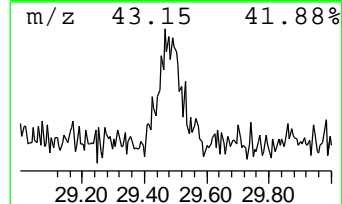
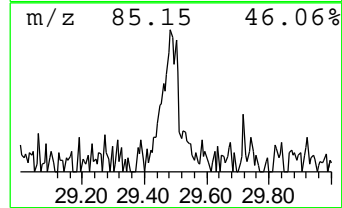
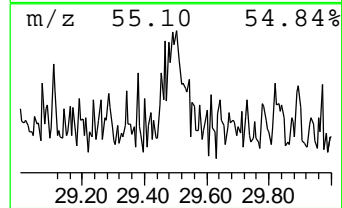
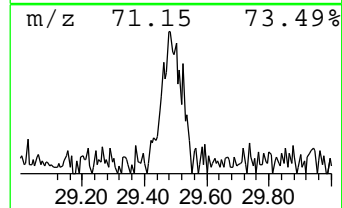
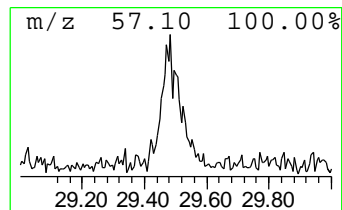
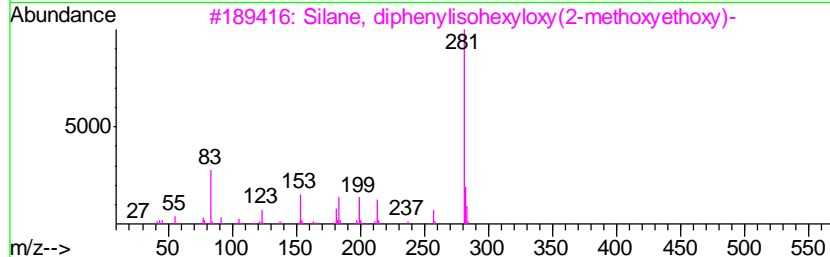
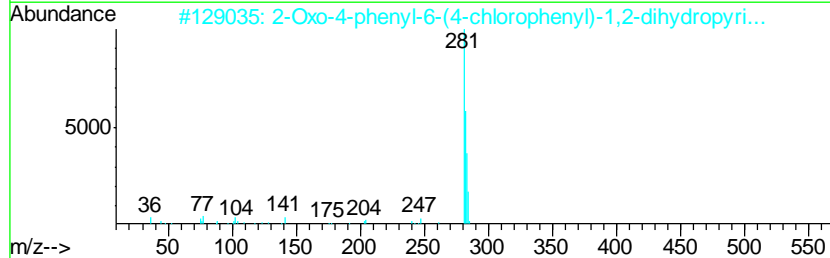
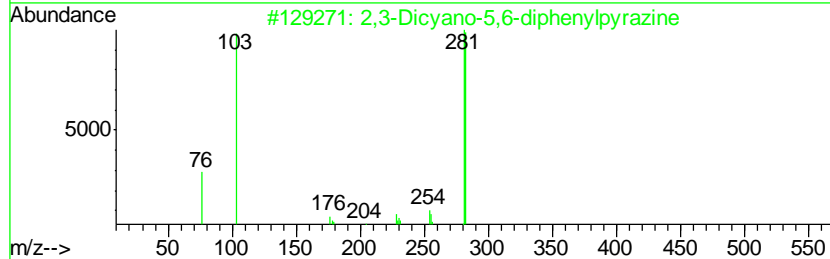
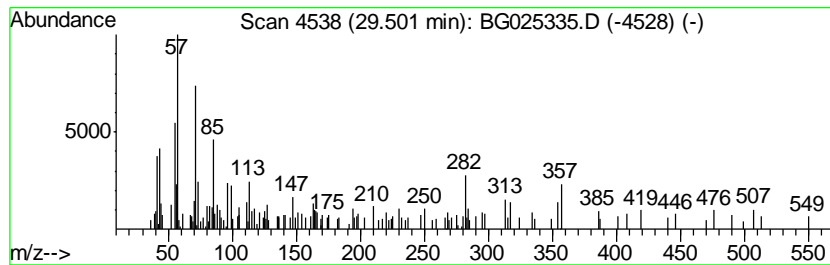
Quant Method : Z:\HPCHEM1\BNA_G\METHODS\SOM02.2-EPA-BG113016.M
 Quant Title : SVOA CALIBRATION

TIC Library : C:\DATABASE\NIST11.L
 TIC Integration Parameters: LSCINT.P

 Peak Number 3 unknown-01 Concentration Rank 3

R.T.	EstConc	Area	Relative to ISTD	R.T.
29.50	2.00 ng/ul	150802	Perylene-d12	25.29

Hit#	of	Tentative ID	MW	MolForm	CAS#	Qual
1	5	2,3-Dicyano-5,6-diphenylpyrazine	282	C18H10N4	052197-23-6	38
2		2-Oxo-4-phenyl-6-(4-chlorophenyl)...	282	C16H11ClN2O	024030-13-5	38
3		Silane, diphenylisohexyloxy(2-me...	358	C21H30O3Si	1000367-72-5	27
4		1-Dimethyl(pentafluorophenyl)sil...	310	C13H15F5OSi	1000215-17-7	27
5		9-Amino-7-mercapto-5,6,8,10-tetr...	281	C13H7N5OS	1000274-60-9	22



Data Path : Z:\HPCHEM1\BNA_G\DATA\BG121916\
Data File : BG025335.D
Acq On : 20 Dec 2016 2:18
Operator : UM/SJ
Sample : H6106-08
Misc :
ALS Vial : 19 Sample Multiplier: 1

Instrument :
BNA_G
ClientSampleId :
DA8X5

Quant Method : Z:\HPCHEM1\BNA_G\METHODS\SOM02.2-EPA-BG113016.M
Quant Title : SVOA CALIBRATION

TIC Library : C:\DATABASE\NIST11.L
TIC Integration Parameters: LSCINT.P

TIC Top Hit name	RT	EstConc	Units	Response	--Internal Standard--			
					#	RT	Resp	Conc
(DEL) Alkane: Str...	26.35	2.1	ng/ul	158055	6	25.29	1505890	20.0
unknown-01	29.50	2.0	ng/ul	150802	6	25.29	1505890	20.0