

Data Path : Z:\svoasrv\HPCHEM1\BNA_G\Data\BG121922\
 Data File : BG056010.D
 Acq On : 19 Dec 2022 11:35
 Operator : CG/JU
 Sample : PB149627BL
 Misc :
 ALS Vial : 3 Sample Multiplier: 1

Instrument :
 BNA_G
 ClientSampleId :
 PB149627BL

Quant Time: Dec 20 01:05:33 2022
 Quant Method : Z:\svoasrv\HPCHEM1\BNA_G\Methods\8270-BG121322.M
 Quant Title : ASP BNA STANDARDS FOR 5 POINT CALIBRATION
 QLast Update : Tue Dec 20 01:01:12 2022
 Response via : Initial Calibration

Compound	R.T.	QIon	Response	Conc	Units	Dev(Min)
Internal Standards						
1) 1,4-Dichlorobenzene-d4	8.364	152	7136	20.000	ng	0.00
21) Naphthalene-d8	11.202	136	26257	20.000	ng	# 0.00
39) Acenaphthene-d10	14.974	164	25804	20.000	ng	0.00
64) Phenanthrene-d10	17.712	188	76606	20.000	ng	0.00
76) Chrysene-d12	22.019	240	94724	20.000	ng	#-0.01
86) Perylene-d12	25.515	264	104508	20.000	ng	-0.01
System Monitoring Compounds						
5) 2-Fluorophenol	5.885	112	41659	136.908	ng	0.00
7) Phenol-d6	7.495	99	51290	131.059	ng	0.00
23) Nitrobenzene-d5	9.539	82	32899	87.560	ng	0.00
42) 2,4,6-Tribromophenol	16.455	330	79952	128.496	ng	0.00
45) 2-Fluorobiphenyl	13.605	172	134520	73.114	ng	0.00
79) Terphenyl-d14	20.291	244	431731	80.554	ng	0.00

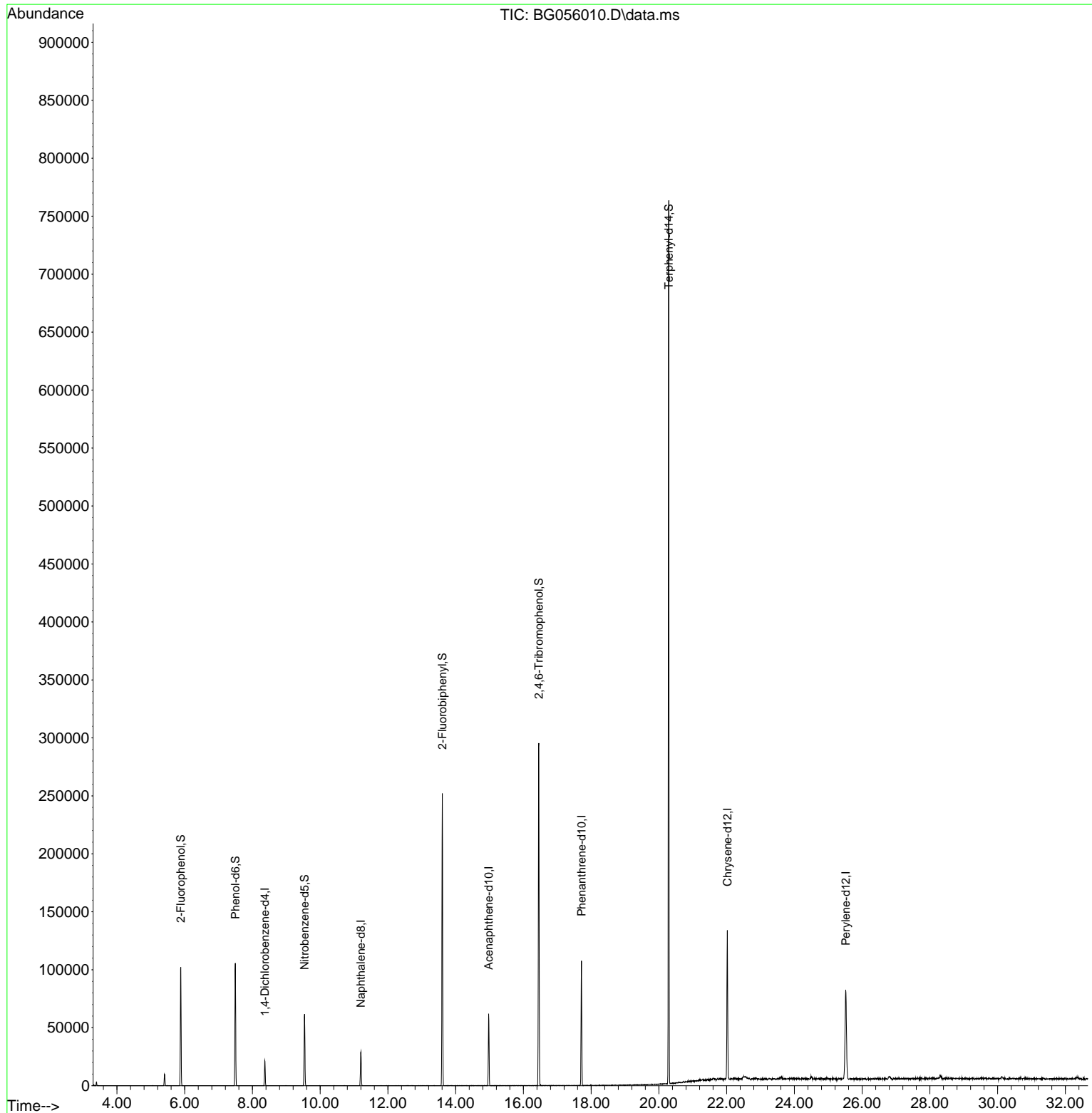
Target Compounds Qvalue

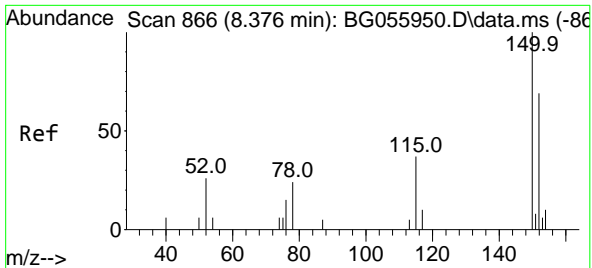
(#) = qualifier out of range (m) = manual integration (+) = signals summed

Data Path : Z:\svoasrv\HPCHEM1\BNA_G\Data\BG121922\
 Data File : BG056010.D
 Acq On : 19 Dec 2022 11:35
 Operator : CG/JU
 Sample : PB149627BL
 Misc :
 ALS Vial : 3 Sample Multiplier: 1

Instrument :
 BNA_G
 ClientSampleId :
 PB149627BL

Quant Time: Dec 20 01:05:33 2022
 Quant Method : Z:\svoasrv\HPCHEM1\BNA_G\Methods\8270-BG121322.M
 Quant Title : ASP BNA STANDARDS FOR 5 POINT CALIBRATION
 QLast Update : Tue Dec 20 01:01:12 2022
 Response via : Initial Calibration

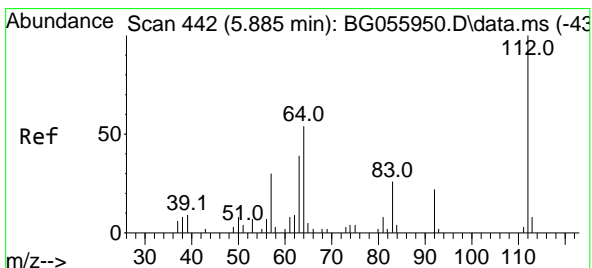
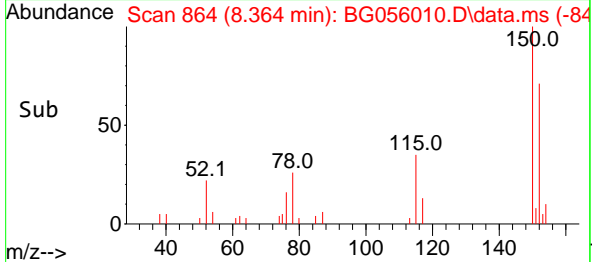
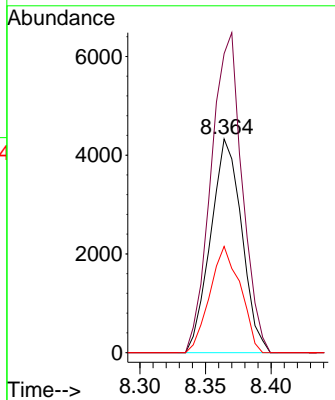
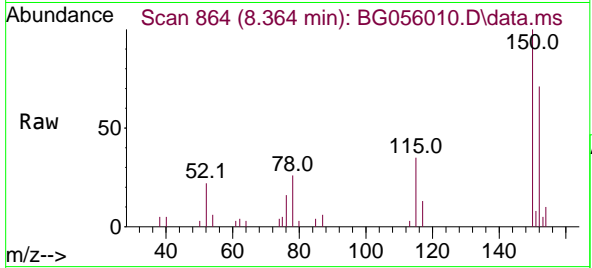




#1
 1,4-Dichlorobenzene-d4
 Concen: 20.000 ng
 RT: 8.364 min Scan# 864
 Delta R.T. 0.000 min
 Lab File: BG056010.D
 Acq: 19 Dec 2022 11:35

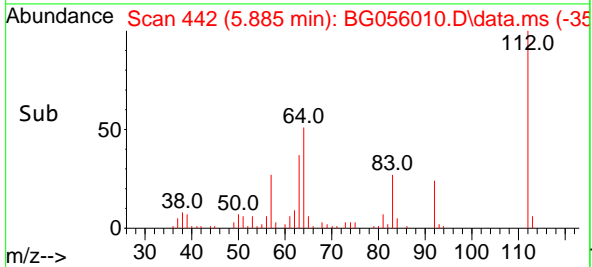
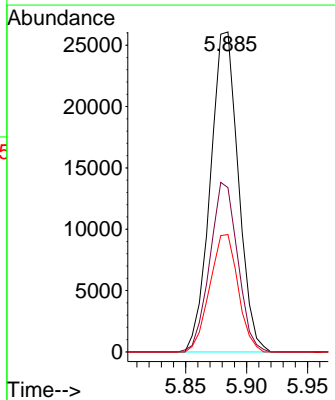
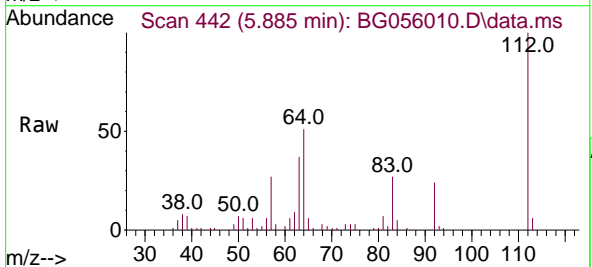
Instrument :
 BNA_G
 ClientSampleId :
 PB149627BL

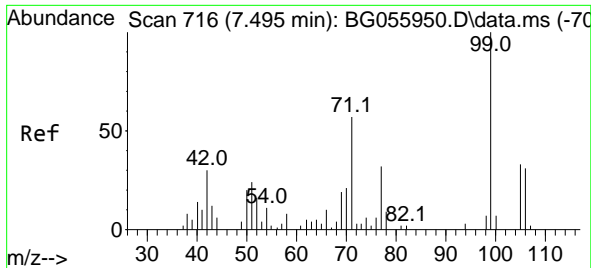
Tgt Ion:152 Resp: 7136
 Ion Ratio Lower Upper
 152 100
 150 139.9 115.7 173.5
 115 49.7 43.0 64.4



#5
 2-Fluorophenol
 Concen: 136.908 ng
 RT: 5.885 min Scan# 442
 Delta R.T. 0.000 min
 Lab File: BG056010.D
 Acq: 19 Dec 2022 11:35

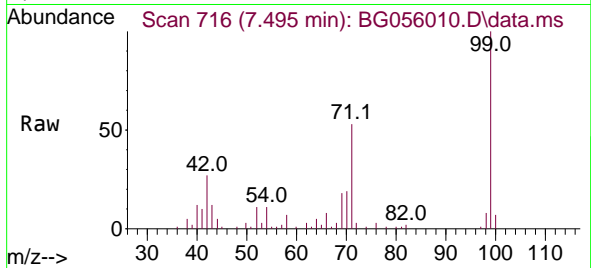
Tgt Ion:112 Resp: 41659
 Ion Ratio Lower Upper
 112 100
 64 51.3 43.0 64.4
 63 36.7 31.4 47.2





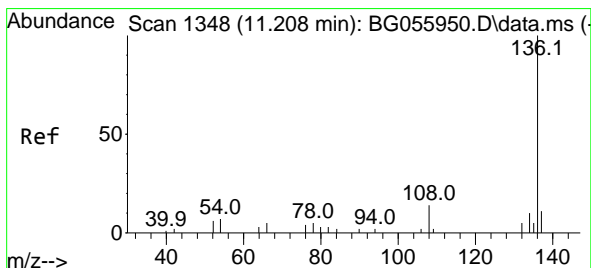
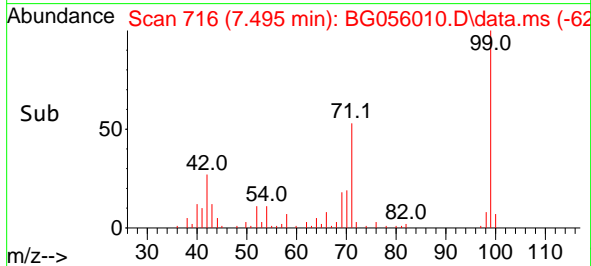
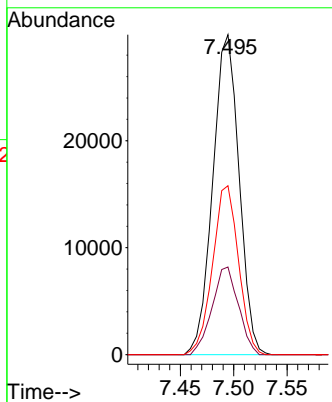
#7
 Phenol-d6
 Concen: 131.059 ng
 RT: 7.495 min Scan# 716
 Delta R.T. 0.000 min
 Lab File: BG056010.D
 Acq: 19 Dec 2022 11:35

Instrument :
 BNA_G
 ClientSampleId :
 PB149627BL



Tgt Ion: 99 Resp: 51290

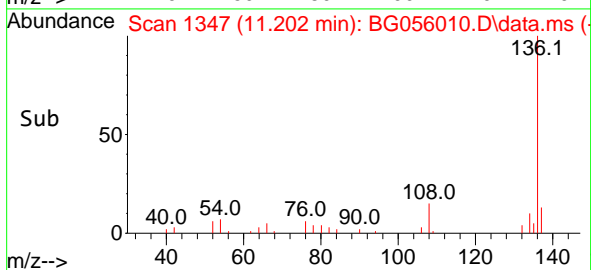
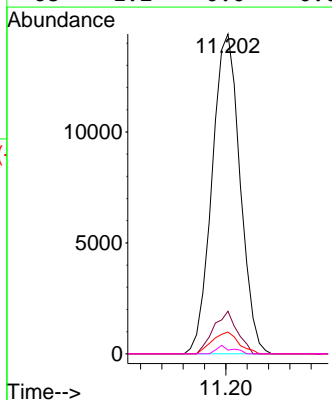
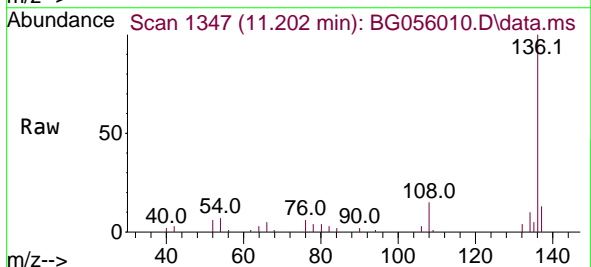
Ion	Ratio	Lower	Upper
99	100		
42	27.4	24.3	36.5
71	52.8	45.6	68.4

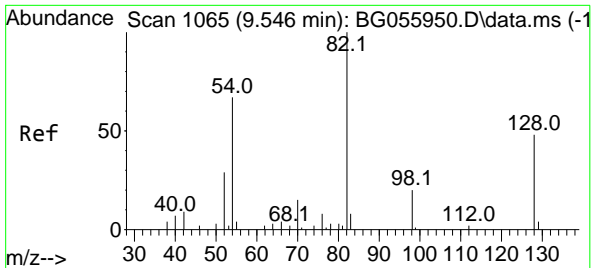


#21
 Naphthalene-d8
 Concen: 20.000 ng
 RT: 11.202 min Scan# 1347
 Delta R.T. -0.006 min
 Lab File: BG056010.D
 Acq: 19 Dec 2022 11:35

Tgt Ion: 136 Resp: 26257

Ion	Ratio	Lower	Upper
136	100		
137	13.3	9.2	13.8
54	6.8	5.6	8.4
68	1.2	0.0	0.0

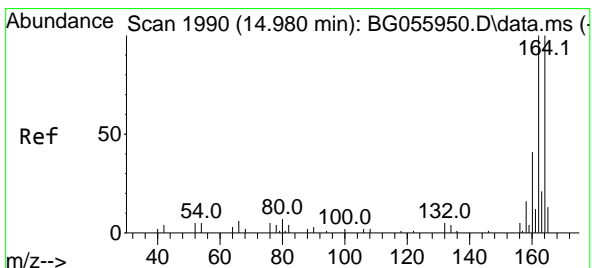
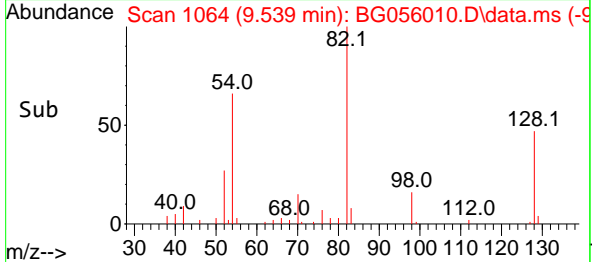
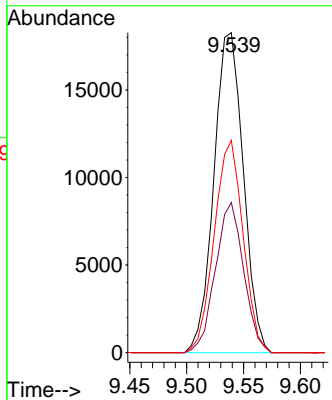
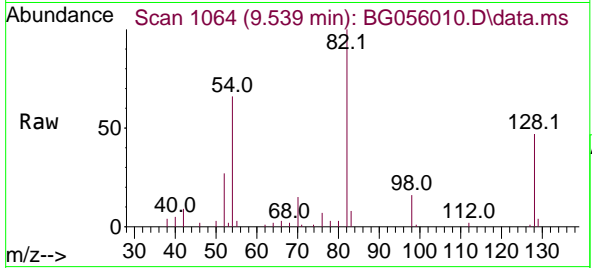




#23
 Nitrobenzene-d5
 Concen: 87.560 ng
 RT: 9.539 min Scan# 1064
 Delta R.T. -0.006 min
 Lab File: BG056010.D
 Acq: 19 Dec 2022 11:35

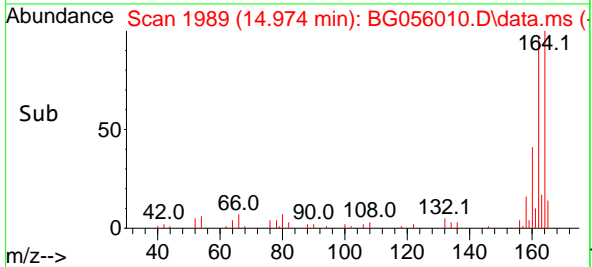
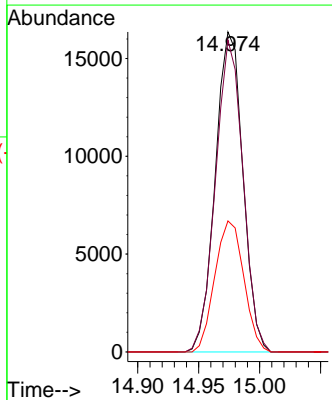
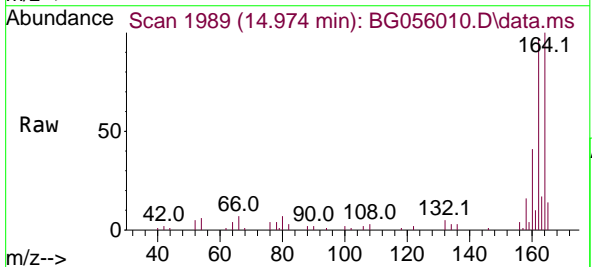
Instrument : BNA_G
 Client Sample Id : PB149627BL

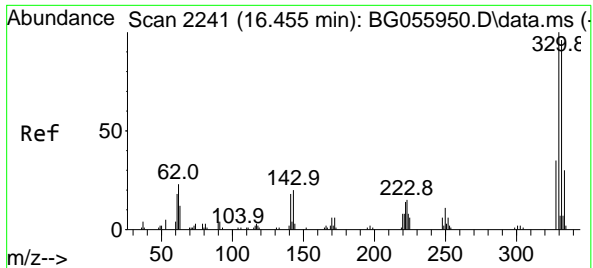
Tgt Ion	Resp	Lower	Upper
82	32899	100	100
128	46.9	38.4	57.6
54	66.3	53.3	79.9



#39
 Acenaphthene-d10
 Concen: 20.000 ng
 RT: 14.974 min Scan# 1989
 Delta R.T. -0.006 min
 Lab File: BG056010.D
 Acq: 19 Dec 2022 11:35

Tgt Ion	Resp	Lower	Upper
164	25804	100	100
162	97.4	79.8	119.8
160	40.9	33.0	49.4





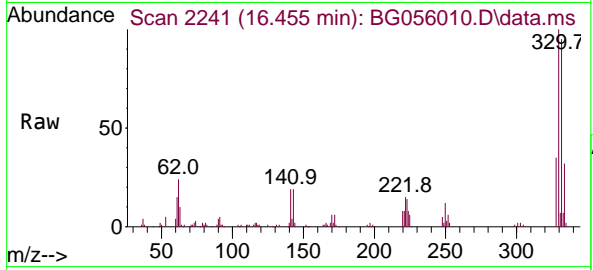
#42
 2,4,6-Tribromophenol
 Concen: 128.496 ng
 RT: 16.455 min Scan# 21
 Delta R.T. -0.006 min
 Lab File: BG056010.D
 Acq: 19 Dec 2022 11:35

Instrument :

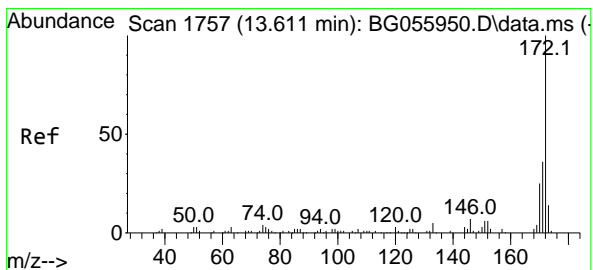
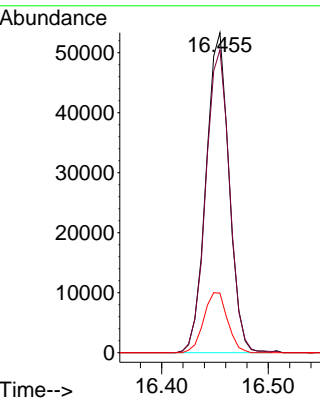
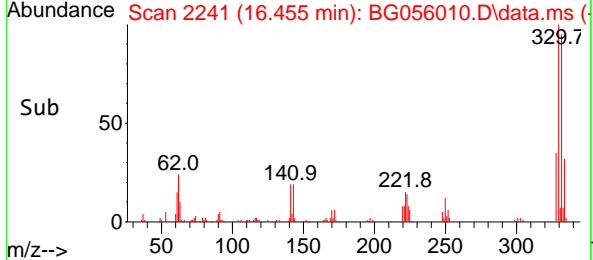
BNA_G

ClientSampleId :

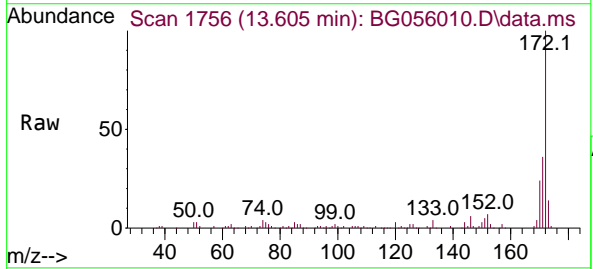
PB149627BL



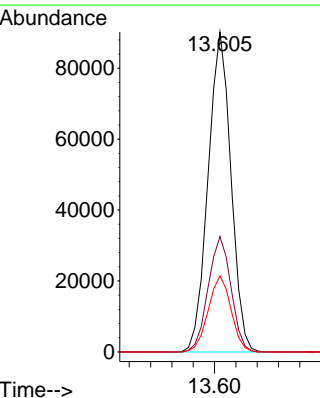
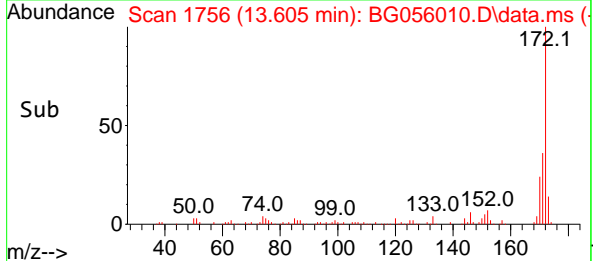
Tgt Ion:330 Resp: 79952
 Ion Ratio Lower Upper
 330 100
 332 97.6 76.6 114.8
 141 19.3 15.0 22.4

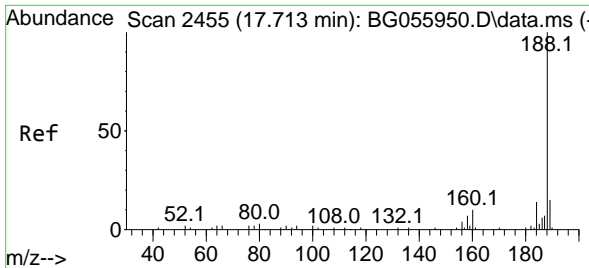


#45
 2-Fluorobiphenyl
 Concen: 73.114 ng
 RT: 13.605 min Scan# 1756
 Delta R.T. -0.006 min
 Lab File: BG056010.D
 Acq: 19 Dec 2022 11:35



Tgt Ion:172 Resp: 134520
 Ion Ratio Lower Upper
 172 100
 171 36.1 28.6 42.8
 170 23.8 19.9 29.9



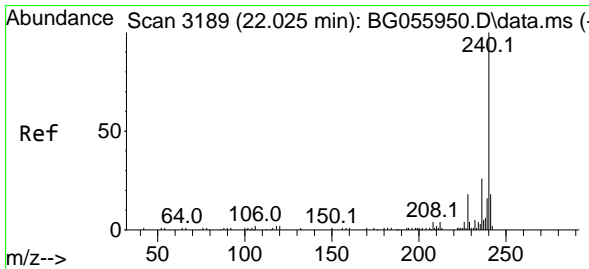
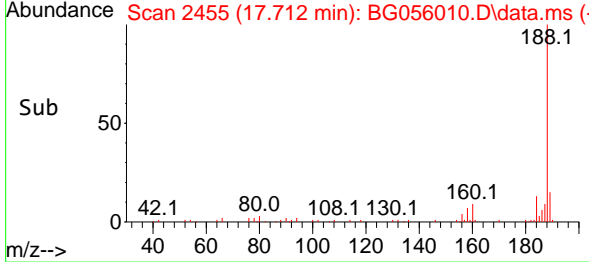
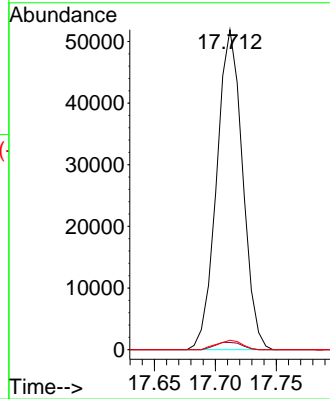
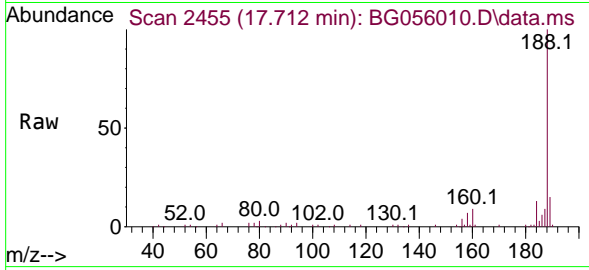


#64
 Phenanthrene-d10
 Concen: 20.000 ng
 RT: 17.712 min Scan# 24
 Delta R.T. -0.006 min
 Lab File: BG056010.D
 Acq: 19 Dec 2022 11:35

Instrument :
 BNA_G
 ClientSampleId :
 PB149627BL

Tgt Ion:188 Resp: 76606

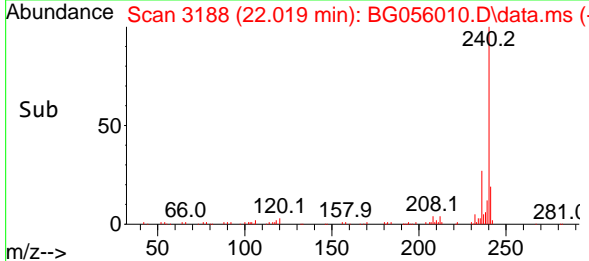
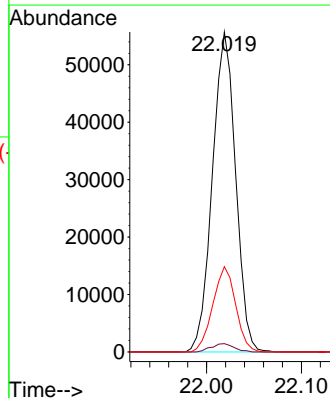
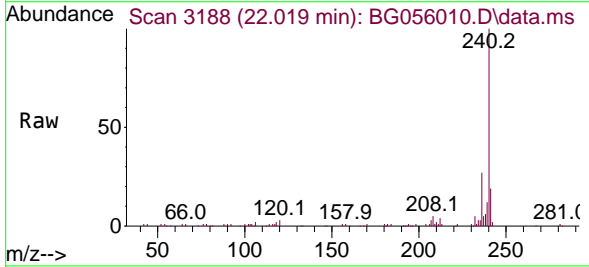
Ion	Ratio	Lower	Upper
188	100		
94	2.2	1.8	2.8
80	2.9	2.4	3.6

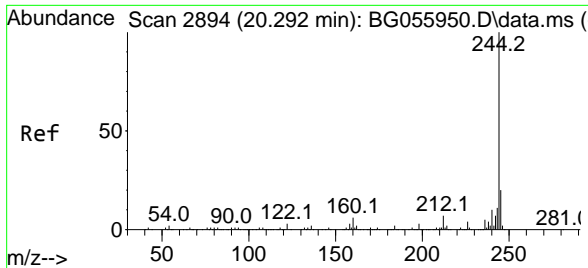


#76
 Chrysene-d12
 Concen: 20.000 ng
 RT: 22.019 min Scan# 3188
 Delta R.T. -0.012 min
 Lab File: BG056010.D
 Acq: 19 Dec 2022 11:35

Tgt Ion:240 Resp: 94724

Ion	Ratio	Lower	Upper
240	100		
120	2.6	1.7	2.5#
236	26.6	21.1	31.7



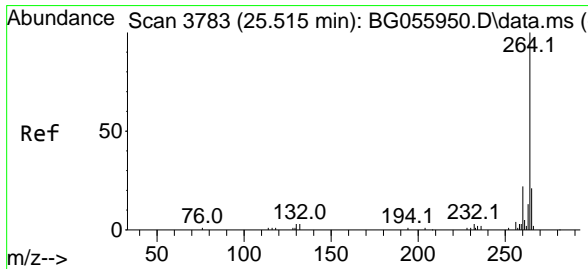
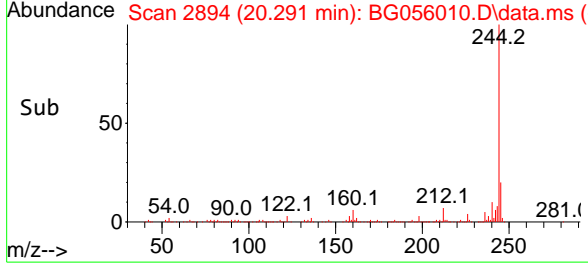
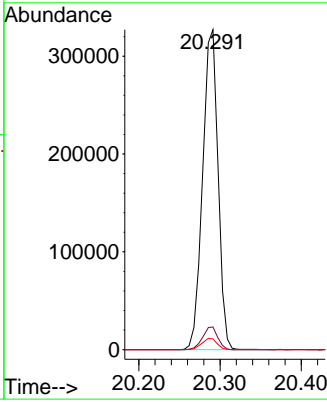
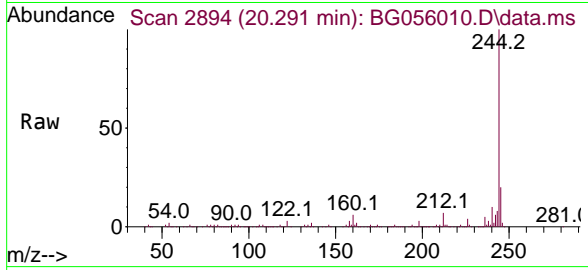


#79
 Terphenyl-d14
 Concen: 80.554 ng
 RT: 20.291 min Scan# 2894
 Delta R.T. 0.000 min
 Lab File: BG056010.D
 Acq: 19 Dec 2022 11:35

Instrument : BNA_G
 ClientSampleId : PB149627BL

Tgt Ion:244 Resp: 431731

Ion	Ratio	Lower	Upper
244	100		
212	7.1	5.8	8.6
122	3.3	2.5	3.7



#86
 Perylene-d12
 Concen: 20.000 ng
 RT: 25.515 min Scan# 3783
 Delta R.T. -0.012 min
 Lab File: BG056010.D
 Acq: 19 Dec 2022 11:35

Tgt Ion:264 Resp: 104508

Ion	Ratio	Lower	Upper
264	100		
260	23.9	17.8	26.8
265	20.4	16.6	25.0

