

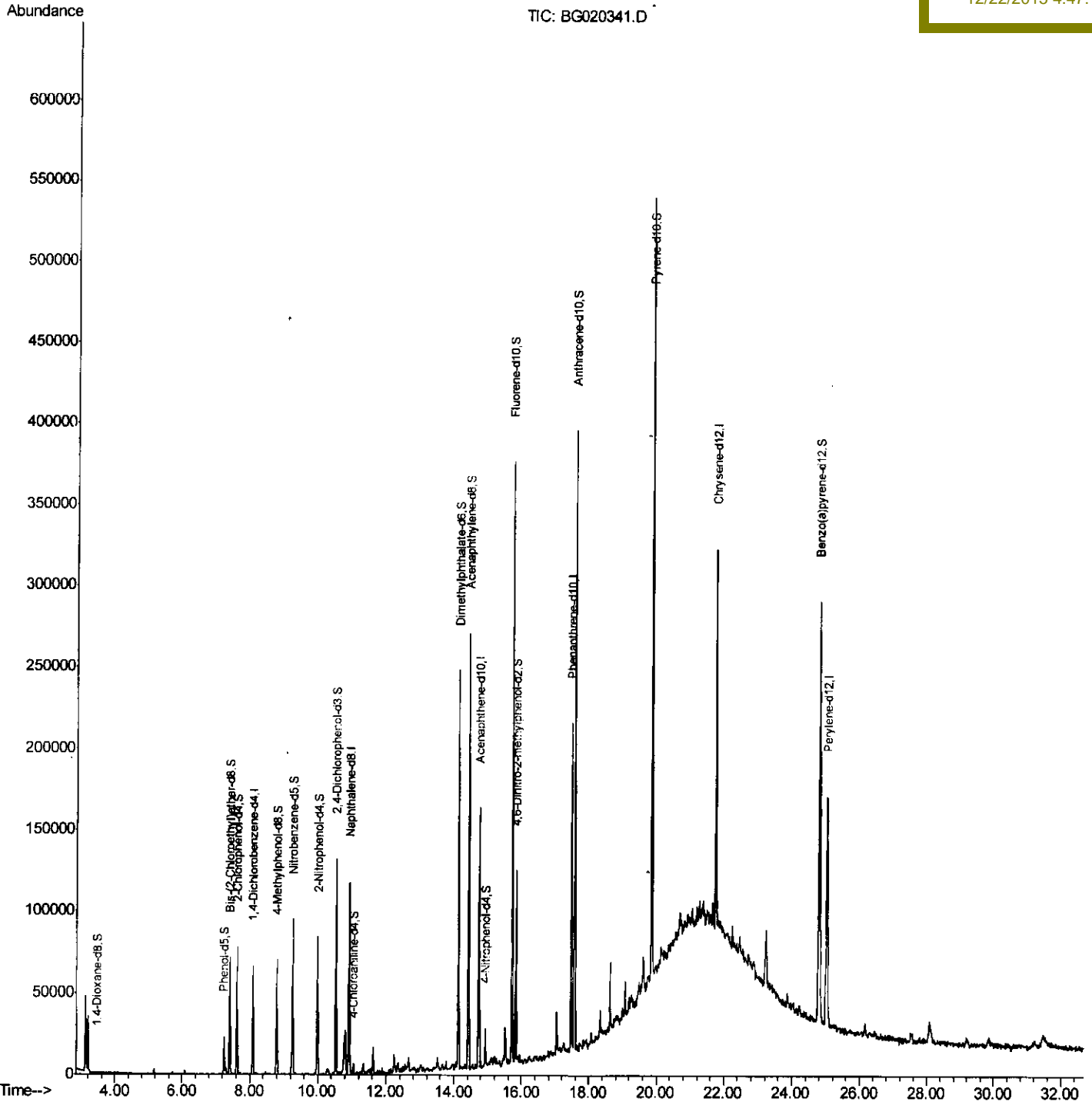
Data Path : Z:\HPCHEM1\BNA G\Data\BG122015\
 Data File : BG020341.D
 Acq On : 20 Dec 2015 14:13
 Operator : UM/SJ
 Sample : G4803-04
 Misc :
 ALS Vial : 8 Sample Multiplier: 1

Instrument :
 BNA_G
 Client Sampled :
 C04D9

Quant Time: Dec 21 01:08:03 2015
 Quant Method : Z:\HPCHEM1\BNA G\METHODS\SOM02.2-EPA-BG121415.M
 Quant Title : SVOA CALIBRATION
 QLast Update : Mon Dec 21 00:36:38 2015
 Response via : Initial Calibration

Manual Integrations
 APPROVED

apatel
 12/22/2015 4:47:16 PM



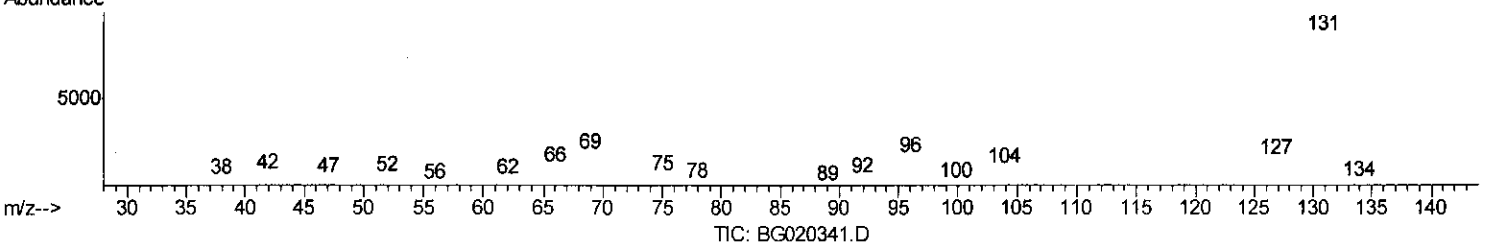
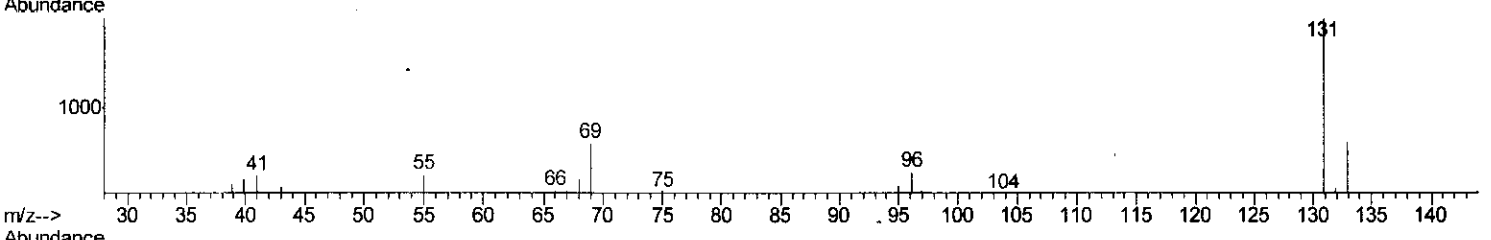
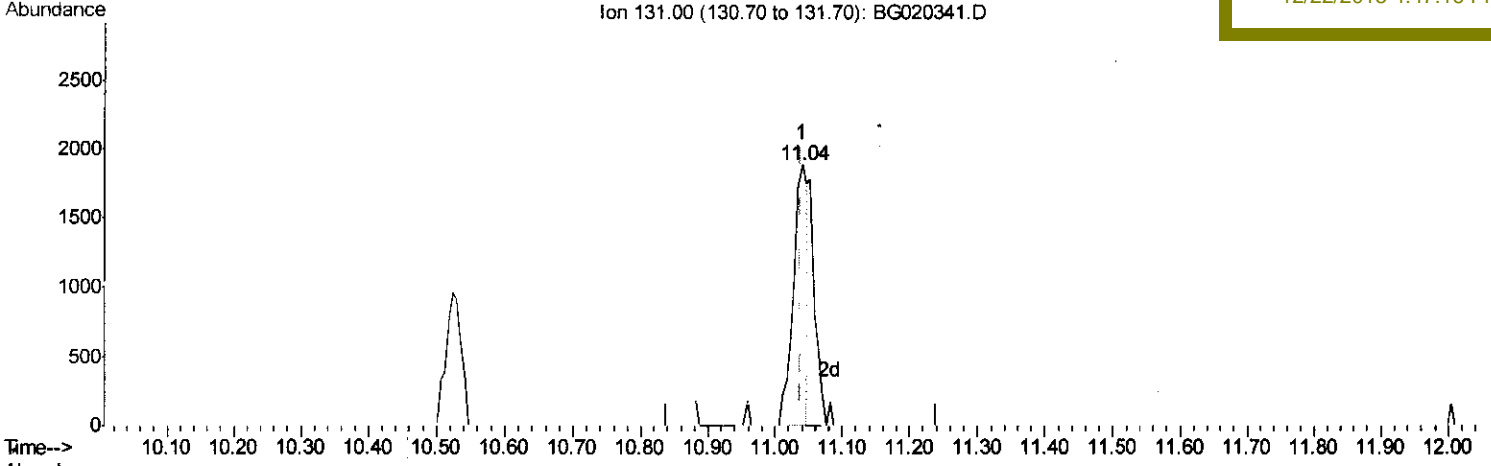
Quantitation Report (Qedit)

Data Path : Z:\HPCHEM1\BNA G\Data\BG122015\
 Data File : BG020341.D
 Acq On : 20 Dec 2015 14:13
 Operator : UM/SJ
 Sample : G4803-04
 Misc :
 ALS Vial : 8 Sample Multiplier: 1

Instrument :
 BNA_G
 ClientSampleId :
 C04D9

Quant Time: Dec 21 01:05:27 2015
 Quant Method : Z:\HPCHEM1\BNA G\METHODS\SOM02.2-EPA-BG121415.M
 Quant Title : SVOA CALIBRATION
 QLast Update : Mon Dec 21 00:36:38 2015
 Response via : Initial Calibration

Manual Integrations
APPROVED
 apatel
 12/22/2015 4:47:16 PM



(29) 4-Chloroaniline-d4 (S)
 11.040min (+0.001) 1.69ng/ul
 response 2694

Ion	Exp%	Act%
131.00	100	100
133.00	30.40	34.27
69.00	17.80	34.01#
0.00	0.00	0.00

Quantitation Report (Qedit)

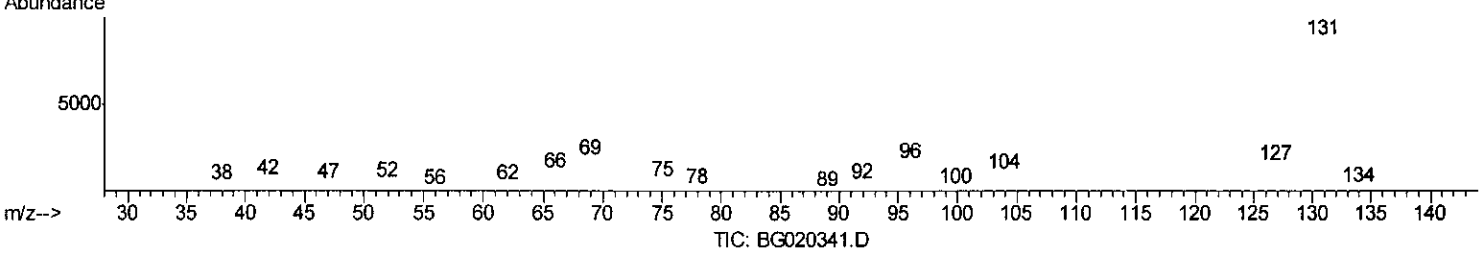
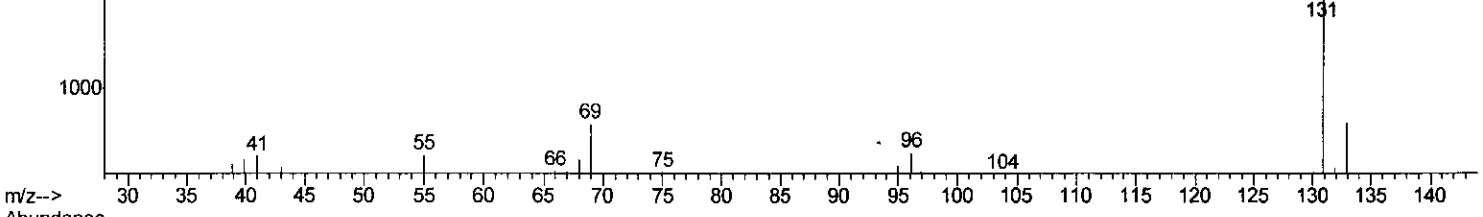
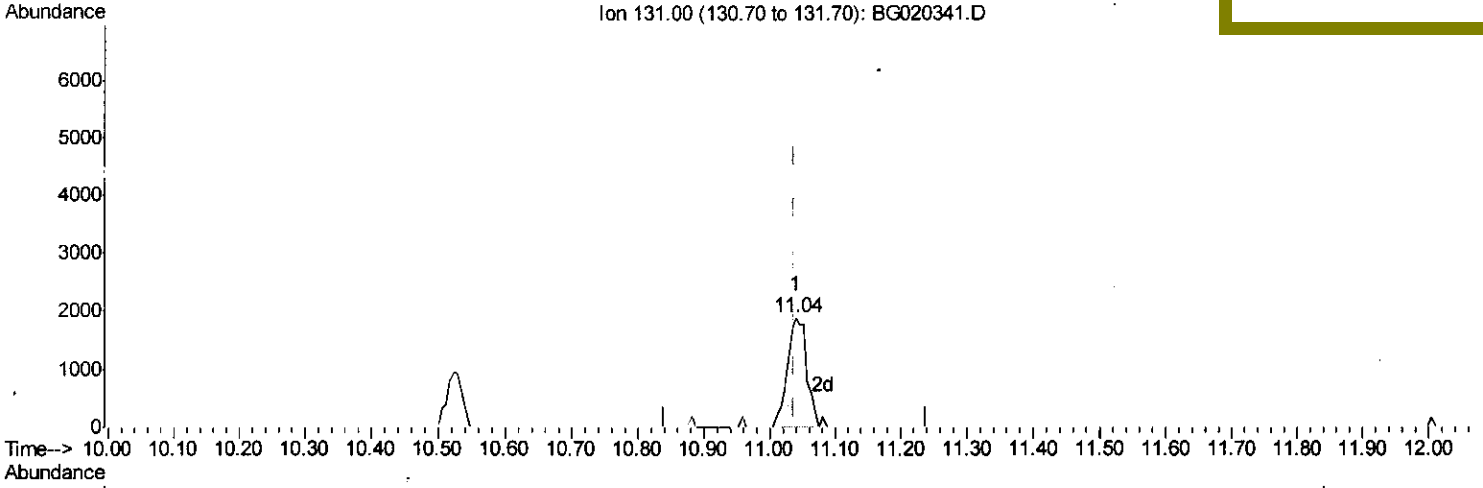
Data Path : Z:\HPCHEM1\BNA G\Data\BG122015\
 Data File : BG020341.D
 Acq On : 20 Dec 2015 14:13
 Operator : UM/SJ
 Sample : G4803-04
 Misc :
 ALS Vial : 8 Sample Multiplier: 1

Instrument :
 BNA_G
 ClientSampleId :
 C04D9

Quant Time: Dec 21 01:05:27 2015
 Quant Method : Z:\HPCHEM1\BNA G\METHODS\SOM02.2-EPA-BG121415.M
 Quant Title : SVOA CALIBRATION
 QLast Update : Mon Dec 21 00:36:38 2015
 Response via : Initial Calibration

Manual Integrations
 APPROVED

apatel
 12/22/2015 4:47:16 PM



(29) 4-Chloroaniline-d4 (S)

11.040min (+0.001) 2.44ng/ul m.m. U.M

response 3893

12/23/15

Ion	Exp%	Act%
131.00	100	100
133.00	30.40	34.27
69.00	17.80	34.01#
0.00	0.00	0.00

Data Path : Z:\HPCHEM1\BNA G\Data\BG122015\
 Data File : BG020341.D
 Acq On : 20 Dec 2015 14:13
 Operator : UM/SJ
 Sample : G4803-04
 Misc :
 ALS Vial : 8 Sample Multiplier: 1

Instrument :
 BNA_G
 ClientSampleId :
 C04D9

Quant Time: Dec 21 01:08:03 2015
 Quant Method : Z:\HPCHEM1\BNA G\METHODS\SOM02.2-EPA-BG121415.M
 Quant Title : SVOA CALIBRATION
 QLast Update : Mon Dec 21 00:36:38 2015
 Response via : Initial Calibration

Manual Integrations
 APPROVED
 apatel
 12/22/2015 4:47:16 PM

Internal Standards	R.T.	QI on	Response	Conc	Units	Dev(Min)
1) 1,4-Dichlorobenzene-d4	8.09	152	19480	20.00	ng/ul	0.00
18) Naphthalene-d8	10.91	136	80997	20.00	ng/ul	0.00
36) Acenaphthene-d10	14.72	164	54830	20.00	ng/ul	0.00
62) Phenanthrene-d10	17.47	188	125265	20.00	ng/ul	0.00
78) Chrysene-d12	21.74	240	157544	20.00	ng/ul	0.00
86) Perylene-d12	25.02	264	149130	20.00	ng/ul	0.00

System Monitoring Compounds

3) 1,4-Dioxane-d8	3.46	96	374	1.06	ng/uL	0.00
5) Phenol-d5	7.24	99	13960	8.13	ng/ul	0.00
7) Bis-(2-Chloroethyl)ether-d	7.41	67	33506	32.69	ng/ul	0.00
9) 2-Chlorophenol-d4	7.62	132	37825	30.28	ng/ul	0.00
13) 4-Methylphenol-d8	8.80	113	26762	18.22	ng/ul	0.00
19) Nitrobenzene-d5	9.26	128	24298	38.48	ng/ul	0.00
22) 2-Nitrophenol-d4	9.98	143	28547	40.63	ng/ul	0.00
26) 2,4-Dichlorophenol-d3	10.52	165	50727	35.64	ng/ul	0.00
29) 4-Chloroaniline-d4	11.04	131	3893m	2.44	ng/ul	0.00
44) Dimethylphthalate-d6	14.12	166	168233	37.93	ng/ul	0.00
47) Acenaphthylene-d8	14.42	160	197947	38.36	ng/ul	0.00
52) 4-Nitrophenol-d4	14.92	143	5831	7.33	ng/ul	0.00
58) Fluorene-d10	15.71	176	149320	37.12	ng/ul	0.00
63) 4,6-Dinitro-2-methylphenol	15.82	200	28038	37.76	ng/ul	0.00
71) Anthracene-d10	17.57	188	230033	39.85	ng/ul	0.00
79) Pyrene-d10	19.85	212	272091	37.06	ng/ul	0.00
90) Benzo(a)pyrene-d12	24.79	264	299776	40.30	ng/ul	0.00

U.M.
12/23/15

Target Compounds Ovalue

(#) = qualifier out of range (m) = manual integration (+) = signals summed