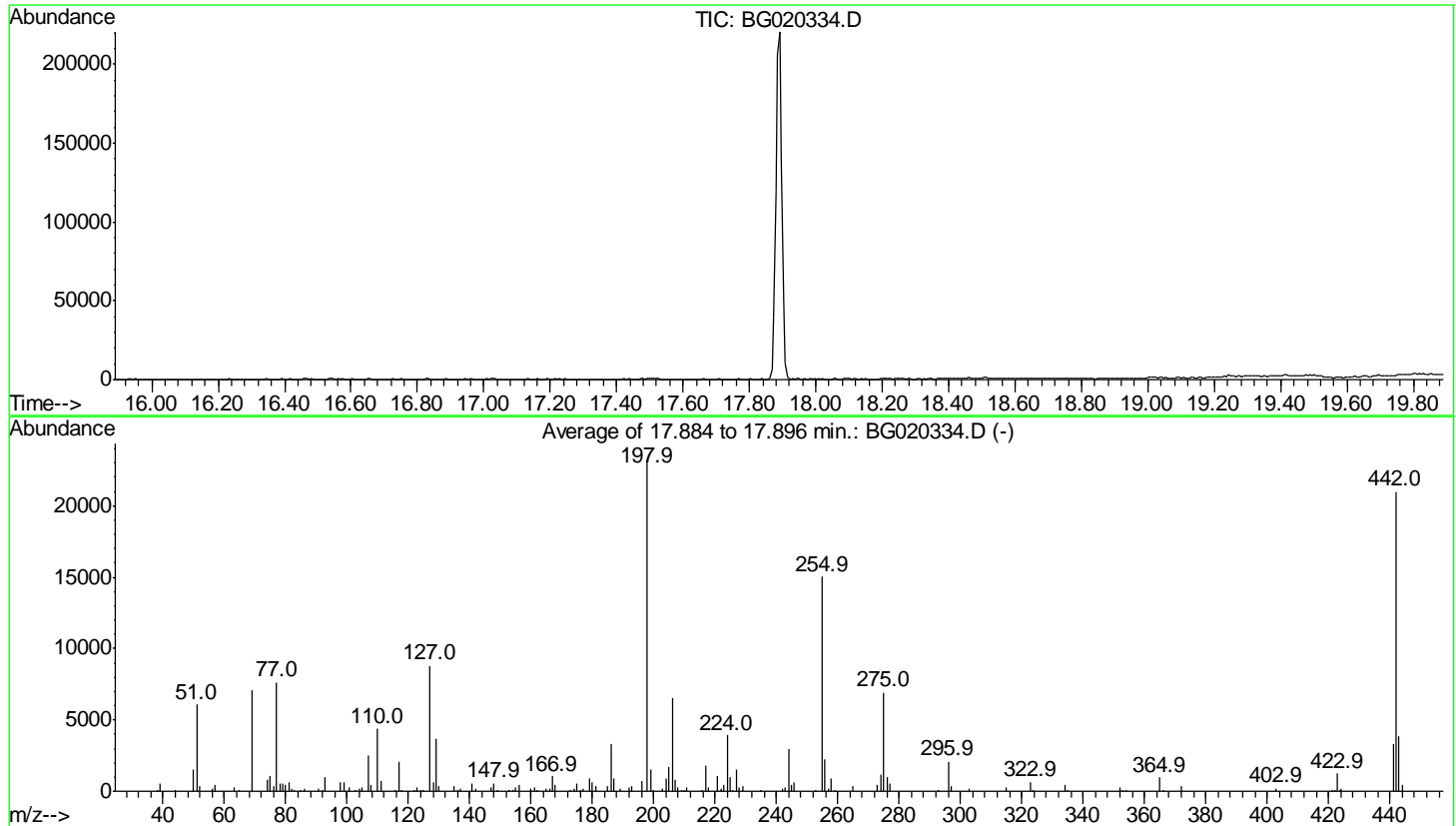


Data Path : Z:\HPCHEM1\BNA G\Data\BG122015\
 Data File : BG020334.D
 Acq On : 20 Dec 2015 9:26
 Operator : UM/SJ
 Sample : DFTPP11
 Misc :
 ALS Vial : 1 Sample Multiplier: 1

Instrument :
 BNA_G
 ClientSampleId :
 DFTPP11

Integration File: LSCINT.P

Method : Z:\HPCHEM1\BNA_G\METHODS\SOM02.2-EPA-BG121415.M
 Title : SVOA CALIBRATION
 Last Update : Tue Dec 22 05:02:37 2015



AutoFind: Scans 2561, 2562, 2563; Background Corrected with Scan 2555

Target Mass	Rel. to Mass	Lower Limit%	Upper Limit%	Rel. Abn%	Raw Abn	Result Pass/Fail
51	198	10	80	26.1	6058	PASS
68	69	0.00	2	0.0	0	PASS
69	198	0.00	100	30.5	7075	PASS
70	69	0.00	2	0.0	0	PASS
127	198	10	80	37.9	8783	PASS
197	198	0.00	2	0.0	0	PASS
198	198	100	100	100.0	23202	PASS
199	198	5	9	6.7	1554	PASS
275	198	10	60	29.8	6913	PASS
365	198	1	100	4.2	966	PASS
441	442	0.01	24	15.9	3325	PASS
442	198	50	100	90.4	20970	PASS
443	442	15	24	18.6	3895	PASS

Scan 2555 (17.849 min): BG020334.D
DFTPP11

m/z	Abundance
40.00	161.0
43.90	156.0

Instrument :
BNA_G
ClientSampleId :
DFTPP11

m/z	Abundance
38.00	205.0
39.00	731.0
43.90	256.0
50.00	1774.0
51.00	7411.0
52.00	435.0
56.00	206.0
57.00	654.0
63.00	393.0
65.10	155.0
69.00	8866.0
74.00	880.0
75.00	1344.0
76.00	366.0
77.00	9521.0
78.00	713.0
79.00	620.0
79.90	400.0
81.00	693.0
82.00	166.0
83.00	207.0
84.90	174.0
85.90	345.0
90.90	234.0
91.90	189.0
92.90	1166.0
98.00	711.0
98.90	732.0
100.90	383.0
103.90	194.0
104.90	267.0
107.00	3114.0
107.90	484.0
110.00	5226.0
111.00	816.0
115.90	177.0
116.90	2659.0
117.90	161.0
121.90	217.0
122.90	312.0
124.00	183.0
125.00	155.0
127.00	10908.0
128.00	735.0
129.00	4218.0
130.00	411.0
134.90	446.0
136.00	160.0
137.00	178.0
140.90	692.0
141.90	200.0
147.00	293.0
147.90	655.0
148.90	176.0
154.90	277.0
155.90	542.0
159.90	228.0
161.00	336.0
164.90	216.0
166.00	166.0
166.90	1112.0
167.90	590.0
172.90	157.0
173.90	294.0
175.00	627.0
176.10	308.0
176.80	189.0
178.90	993.0
179.90	667.0
180.90	360.0
184.90	468.0
186.00	3494.0
187.00	1075.0
189.00	309.0
191.90	311.0
193.00	379.0
196.00	610.0
197.90	25904.0
198.90	1582.0
203.00	173.0
204.00	1026.0
205.00	1985.0
206.00	7009.0
207.00	859.0
207.90	324.0
208.90	164.0
210.90	240.0
215.90	165.0
216.90	1969.0
217.90	321.0
220.90	1112.0
221.80	299.0

Instrument :
BNA_G
ClientSampleId :
DFTPP11

222.90	536.0
224.00	4244.0
225.00	1089.0
226.90	1746.0
227.90	289.0
228.80	335.0
235.00	161.0
241.90	173.0
243.00	330.0
244.00	3271.0
245.00	452.0
245.90	608.0
254.90	15816.0
255.90	2227.0
257.00	189.0
258.00	776.0
259.00	168.0
264.90	440.0
272.90	414.0
273.90	1206.0
275.00	7123.0
276.00	985.0
276.90	544.0
295.90	2000.0
297.00	406.0
302.90	291.0
314.90	243.0
322.90	583.0
323.80	157.0
333.90	468.0
352.00	225.0
353.00	176.0
364.90	1070.0
371.90	349.0
403.00	225.0
423.00	1191.0
423.80	193.0
441.00	2700.0
442.00	18672.0
443.00	3581.0
443.90	423.0

Instrument :
BNA_G
ClientSampleId :
DFTPP11

m/z	Abundance
39.00	558.0
39.90	160.0
44.00	180.0
50.00	1776.0
51.00	6991.0
52.00	486.0
56.00	209.0
57.00	491.0
63.00	341.0
65.00	172.0
68.90	7705.0
74.00	1045.0
75.00	1252.0
76.00	477.0
77.00	8903.0
78.00	569.0
78.90	592.0
80.00	554.0
80.90	728.0
81.90	232.0
82.90	177.0
84.80	156.0
86.00	232.0
90.90	153.0
91.90	214.0
92.90	1223.0
97.90	807.0
99.00	722.0
100.90	305.0
102.80	172.0
104.00	218.0
105.00	299.0
107.00	2845.0
108.00	488.0
109.90	5035.0
111.00	814.0
115.90	154.0
117.00	2323.0
121.90	180.0
122.80	290.0
123.90	165.0
127.00	10070.0
128.00	838.0
129.00	4332.0
129.90	445.0
135.00	428.0
136.00	247.0
136.90	237.0
140.90	723.0
141.90	190.0
147.00	388.0
147.90	603.0
152.80	181.0
154.00	209.0
155.00	303.0
156.00	455.0
159.90	206.0
161.00	306.0
162.00	164.0
164.90	248.0
166.00	166.0
166.90	1131.0
168.00	403.0
172.90	187.0
173.90	341.0
175.00	522.0
176.90	330.0
178.90	1094.0
180.00	743.0
181.00	257.0
184.90	298.0
186.00	4148.0
187.00	987.0
188.90	195.0
191.90	349.0
192.90	347.0
196.00	959.0
197.90	26792.0
198.90	1835.0
199.90	204.0
202.90	227.0
204.00	1273.0
204.90	1989.0
206.00	8030.0
206.90	1006.0
208.00	240.0
208.90	160.0
209.80	178.0
210.90	296.0
215.90	150.0
216.90	2174.0
217.90	356.0

Instrument :
BNA_G
ClientSampleId :
DFTPP11

220.90	1373.0
221.80	270.0
222.90	442.0
224.00	4597.0
225.00	1103.0
225.90	153.0
226.90	1806.0
228.00	311.0
228.90	403.0
241.90	249.0
242.90	326.0
244.00	3346.0
244.90	396.0
245.90	821.0
252.90	188.0
255.00	17472.0
255.90	2451.0
257.00	253.0
257.90	980.0
258.90	210.0
264.90	379.0
272.90	672.0
273.90	1406.0
275.00	7992.0
275.90	1277.0
276.90	725.0
292.90	191.0
296.00	2202.0
297.00	372.0
303.00	303.0
315.00	246.0
323.00	660.0
333.90	500.0
335.00	156.0
352.00	287.0
354.10	155.0
365.00	960.0
366.00	245.0
372.00	460.0
402.90	175.0
421.90	219.0
422.90	1354.0
424.00	300.0
441.00	4189.0
442.00	24512.0
443.00	4328.0
444.00	641.0

Instrument :
BNA_G
ClientSampleId :
DFTPP11

m/z	Abundance
39.10	246.0
39.90	169.0
44.00	195.0
50.00	1042.0
51.00	3773.0
52.00	199.0
56.90	329.0
68.90	4656.0
73.90	494.0
75.00	694.0
76.00	314.0
77.00	4552.0
78.00	383.0
79.00	363.0
80.00	273.0
80.90	338.0
82.00	169.0
90.90	166.0
92.90	615.0
97.90	367.0
98.90	329.0
100.90	251.0
103.90	160.0
105.00	168.0
107.00	1697.0
108.00	308.0
109.90	2825.0
111.00	468.0
117.00	1191.0
122.90	237.0
127.00	5371.0
128.00	377.0
129.00	2402.0
129.90	248.0
134.90	183.0
140.90	330.0
142.00	172.0
146.80	228.0
147.90	397.0
153.00	188.0
154.90	196.0
156.00	305.0
159.90	233.0
161.00	160.0
164.90	182.0
165.90	172.0
166.90	921.0
168.00	342.0
174.90	358.0
178.90	606.0
179.90	433.0
181.00	335.0
184.90	320.0
186.00	2284.0
187.00	710.0
188.90	166.0
192.00	166.0
192.90	355.0
195.90	515.0
197.90	16912.0
198.90	1246.0
202.90	279.0
203.90	526.0
204.90	1223.0
206.00	4631.0
206.90	694.0
208.00	162.0
210.80	158.0
216.90	1181.0
217.90	180.0
220.90	772.0
222.00	157.0
222.90	297.0
224.00	2872.0
225.00	842.0
226.90	1100.0
227.90	237.0
229.00	217.0
241.90	169.0
242.90	171.0
244.00	2239.0
244.90	383.0
245.90	427.0
254.90	11739.0
255.90	1976.0
256.90	153.0
257.90	888.0
264.90	335.0
272.90	399.0
273.90	919.0
275.00	5624.0
276.00	638.0

Instrument :
BNA_G
ClientSampleId :
DFTPP11

276.80	396.0
295.90	1986.0
296.90	227.0
314.90	278.0
323.00	668.0
334.00	308.0
351.90	196.0
354.00	197.0
364.90	868.0
372.00	321.0
403.00	239.0
421.00	202.0
423.00	1091.0
424.00	172.0
441.00	3087.0
442.00	19728.0
443.00	3778.0
444.00	295.0

Instrument :
BNA_G
ClientSampleId :
DFTPP11