

Data Path : Z:\svoasrv\HPCHEM1\BNA_G\Data\BG122021\
 Data File : BG051729.D
 Acq On : 21 Dec 2021 23:41
 Operator : CG/JU
 Sample : M5126-03
 Misc :
 ALS Vial : 56 Sample Multiplier: 1

Instrument :
 BNA_G
 ClientSampleId :
 COJ12

Integration Parameters: LSCINT.P

Integrator: RTE
 Smoothing : OFF Filtering: 5
 Sampling : 1 Min Area: 0.1 % of largest Peak
 Start Thrs: 0.2 Max Peaks: 100
 Stop Thrs : 0 Peak Location: TOP

If leading or trailing edge < 100 prefer < Baseline drop else tangent >
 Peak separation: 5

Method : Z:\svoasrv\HPCHEM1\BNA_G\Methods\SFAM-EPA-BG121421.M
 Title : SVOA CALIBRATION

Signal : TIC: BG051729.D\data.ms

peak #	R.T. min	first scan	max scan	last scan	PK TY	peak height	corr. area	corr. % max.	% of total
1	3.597	13	18	23	rVB2	8898	12918	0.88%	0.095%
2	4.026	87	91	101	rBV	44448	80475	5.48%	0.589%
3	4.290	131	136	140	rVB2	1256	2501	0.17%	0.018%
4	4.379	147	151	152	rVV2	1946	2828	0.19%	0.021%
5	4.390	152	153	158	rVB2	2619	2769	0.19%	0.020%
6	7.404	660	666	673	rBV	46192	79412	5.40%	0.582%
7	7.580	689	696	703	rVB	150020	259580	17.67%	1.901%
8	7.797	726	733	741	rVB	158087	276441	18.82%	2.024%
9	8.273	806	814	822	rBV	153056	255496	17.39%	1.871%
10	8.966	925	932	940	rBV2	127924	225350	15.34%	1.650%
11	9.442	1004	1013	1023	rVB	214954	384454	26.17%	2.815%
12	9.871	1081	1086	1090	rBV3	1779	2624	0.18%	0.019%
13	10.177	1128	1138	1146	rBV	171425	315773	21.49%	2.312%
14	10.717	1222	1230	1239	rBV	267698	468714	31.90%	3.432%
15	11.111	1288	1297	1304	rBV	200087	370771	25.24%	2.715%
16	11.234	1307	1318	1326	rBV	216845	412411	28.07%	3.020%
17	12.362	1506	1510	1516	rBV2	1351	2909	0.20%	0.021%
18	12.497	1531	1533	1539	rVB3	2053	3213	0.22%	0.024%
19	12.603	1544	1551	1557	rVV3	5277	8647	0.59%	0.063%
20	12.673	1559	1563	1569	rVB2	4047	7571	0.52%	0.055%
21	13.731	1737	1743	1749	rVB6	3937	7321	0.50%	0.054%
22	13.789	1749	1753	1756	rBV3	1850	2876	0.20%	0.021%
23	14.300	1833	1840	1849	rVV	551789	819419	55.77%	6.001%
24	14.606	1885	1892	1899	rVV	581346	918036	62.48%	6.723%
25	14.911	1935	1944	1952	rBV	338176	531279	36.16%	3.891%
26	15.070	1964	1971	1980	rBV	40282	70694	4.81%	0.518%
27	15.693	2071	2077	2082	rBV3	2414	4856	0.33%	0.036%
28	15.898	2105	2112	2122	rBV	737948	1171611	79.74%	8.580%
29	15.998	2122	2129	2139	rBV	215466	323583	22.02%	2.370%
30	16.133	2149	2152	2158	rVB4	2622	3852	0.26%	0.028%
31	16.562	2222	2225	2228	rBV2	2346	2773	0.19%	0.020%
32	16.650	2237	2240	2242	rVV2	2493	3527	0.24%	0.026%
33	17.114	2314	2319	2323	rVB5	1460	3182	0.22%	0.023%
34	17.384	2361	2365	2370	rBV4	3843	7052	0.48%	0.052%
35	17.655	2405	2411	2418	rBV	421175	633921	43.15%	4.642%
36	17.755	2418	2428	2437	rVB	854408	1300085	88.49%	9.520%

Data Path : Z:\svoasrv\HPCHEM1\BNA_G\Data\BG122021\
 Data File : BG051729.D
 Acq On : 21 Dec 2021 23:41
 Operator : CG/JU
 Sample : M5126-03
 Misc :
 ALS Vial : 56 Sample Multiplier: 1

Instrument :
 BNA_G
 ClientSampleId :
 COJ12

Integration Parameters: LSCINT.P

Integrator: RTE
 Smoothing : OFF
 Sampling : 1
 Start Thrs: 0.2
 Stop Thrs : 0

Filtering: 5
 Min Area: 0.1 % of largest Peak
 Max Peaks: 100
 Peak Location: TOP

If leading or trailing edge < 100 prefer < Baseline drop else tangent >
 Peak separation: 5

Method : Z:\svoasrv\HPCHEM1\BNA_G\Methods\SFAM-EPA-BG121421.M
 Title : SVOA CALIBRATION

37	18.301	2517	2521	2526	rBV	37423	45092	3.07%	0.330%
38	18.518	2554	2558	2563	rBV5	13023	19907	1.35%	0.146%
39	18.600	2570	2572	2575	rVB3	2643	2515	0.17%	0.018%
40	18.642	2578	2579	2582	rVB2	2827	2509	0.17%	0.018%
41	18.677	2582	2585	2587	rBV4	3015	3505	0.24%	0.026%
42	18.794	2600	2605	2607	rBV4	2801	3367	0.23%	0.025%
43	19.018	2641	2643	2647	rVV4	4671	4958	0.34%	0.036%
44	19.129	2659	2662	2664	rBV4	2427	2994	0.20%	0.022%
45	19.153	2664	2666	2670	rVB4	2516	3222	0.22%	0.024%
46	19.270	2684	2686	2689	rBV4	2240	3081	0.21%	0.023%
47	19.458	2714	2718	2724	rVB5	22654	27704	1.89%	0.203%
48	19.599	2737	2742	2748	rBV2	18147	29322	2.00%	0.215%
49	19.664	2750	2753	2758	rVV3	11409	18713	1.27%	0.137%
50	19.781	2770	2773	2778	rVB5	8231	12492	0.85%	0.091%
51	19.816	2778	2779	2785	rVB6	3379	3862	0.26%	0.028%
52	19.928	2793	2798	2803	rBV7	5616	8829	0.60%	0.065%
53	20.034	2809	2816	2823	rVV	991070	1469236	100.00%	10.759%
54	20.251	2850	2853	2855	rVB4	3337	2878	0.20%	0.021%
55	20.333	2864	2867	2868	rBV4	3811	4077	0.28%	0.030%
56	20.545	2900	2903	2905	rVB4	4618	4088	0.28%	0.030%
57	21.027	2983	2985	2986	rVB2	4148	2790	0.19%	0.020%
58	21.044	2986	2988	2992	rVB5	5027	5628	0.38%	0.041%
59	21.344	3038	3039	3043	rVB4	4570	3668	0.25%	0.027%
60	21.444	3054	3056	3058	rBV3	4795	3406	0.23%	0.025%
61	21.585	3076	3080	3088	rBV3	9219	29312	2.00%	0.215%
62	21.831	3120	3122	3124	rBV3	3970	3162	0.22%	0.023%
63	21.978	3139	3147	3155	rBV2	363108	653703	44.49%	4.787%
64	22.836	3287	3293	3296	rBV7	7499	14874	1.01%	0.109%
65	23.371	3383	3384	3387	rBV3	3642	4466	0.30%	0.033%
66	23.588	3418	3421	3430	rVB9	9989	19401	1.32%	0.142%
67	23.976	3485	3487	3489	rBV3	3415	2751	0.19%	0.020%
68	24.481	3567	3573	3582	rBV9	12149	30433	2.07%	0.223%
69	24.587	3589	3591	3595	rBV5	3026	2735	0.19%	0.020%
70	25.056	3669	3671	3675	rBV4	3154	4805	0.33%	0.035%
71	25.233	3689	3701	3716	rVB3	458823	1386028	94.34%	10.150%
72	25.474	3729	3742	3764	rVB2	202288	688073	46.83%	5.039%
73	25.650	3770	3772	3778	rBV7	5234	8302	0.57%	0.061%
74	25.826	3797	3802	3803	rBV5	3045	5258	0.36%	0.039%
75	26.272	3876	3878	3881	rVB4	2892	3118	0.21%	0.023%
76	26.331	3886	3888	3894	rVV7	2943	4454	0.30%	0.033%

Data Path : Z:\svoasrv\HPCHEM1\BNA_G\Data\BG122021\
 Data File : BG051729.D
 Acq On : 21 Dec 2021 23:41
 Operator : CG/JU
 Sample : M5126-03
 Misc :
 ALS Vial : 56 Sample Multiplier: 1

Instrument :
 BNA_G
 ClientSampleId :
 C0J12

Integration Parameters: LSCINT.P

Integrator: RTE
 Smoothing : OFF Filtering: 5
 Sampling : 1 Min Area: 0.1 % of largest Peak
 Start Thrs: 0.2 Max Peaks: 100
 Stop Thrs : 0 Peak Location: TOP

If leading or trailing edge < 100 prefer < Baseline drop else tangent >
 Peak separation: 5

Method : Z:\svoasrv\HPCHEM1\BNA_G\Methods\SFAM-EPA-BG121421.M
 Title : SVOA CALIBRATION

77	26.437	3904	3906	3910	rVB5	3855	2969	0.20%	0.022%
78	26.801	3959	3968	3976	rBV6	17993	49358	3.36%	0.361%
79	27.066	4011	4013	4017	rBV5	4331	4035	0.27%	0.030%
80	27.177	4030	4032	4034	rBV3	3065	3079	0.21%	0.023%
81	27.406	4069	4071	4073	rBV3	3029	3067	0.21%	0.022%
82	27.453	4077	4079	4081	rBV3	3557	2760	0.19%	0.020%
83	27.471	4081	4082	4084	rBV2	3477	2739	0.19%	0.020%
84	27.864	4147	4149	4152	rBV4	3447	4156	0.28%	0.030%
85	27.947	4161	4163	4168	rVB6	3411	2899	0.20%	0.021%
86	28.422	4242	4244	4247	rBV4	3991	3706	0.25%	0.027%
87	29.022	4344	4346	4349	rBV4	3722	2533	0.17%	0.019%
88	29.127	4362	4364	4367	rBV4	2736	2866	0.20%	0.021%
89	29.221	4378	4380	4383	rBV4	4395	5877	0.40%	0.043%
90	29.362	4402	4404	4407	rBV3	2988	3418	0.23%	0.025%
91	29.433	4413	4416	4418	rBV3	3360	2920	0.20%	0.021%
92	29.768	4471	4473	4476	rVB4	3303	2497	0.17%	0.018%
93	29.950	4502	4504	4507	rBV4	3093	3767	0.26%	0.028%
94	30.373	4573	4576	4577	rBV3	2809	2598	0.18%	0.019%
95	30.837	4653	4655	4658	rVV4	3088	2959	0.20%	0.022%
96	30.907	4665	4667	4671	rBV5	3014	4401	0.30%	0.032%
97	31.718	4804	4805	4808	rBV3	3128	3983	0.27%	0.029%
98	31.924	4838	4840	4844	rBV4	2836	4812	0.33%	0.035%
99	31.988	4848	4851	4852	rBV3	3399	3526	0.24%	0.026%
100	32.035	4856	4859	4861	rBV4	2874	3136	0.21%	0.023%

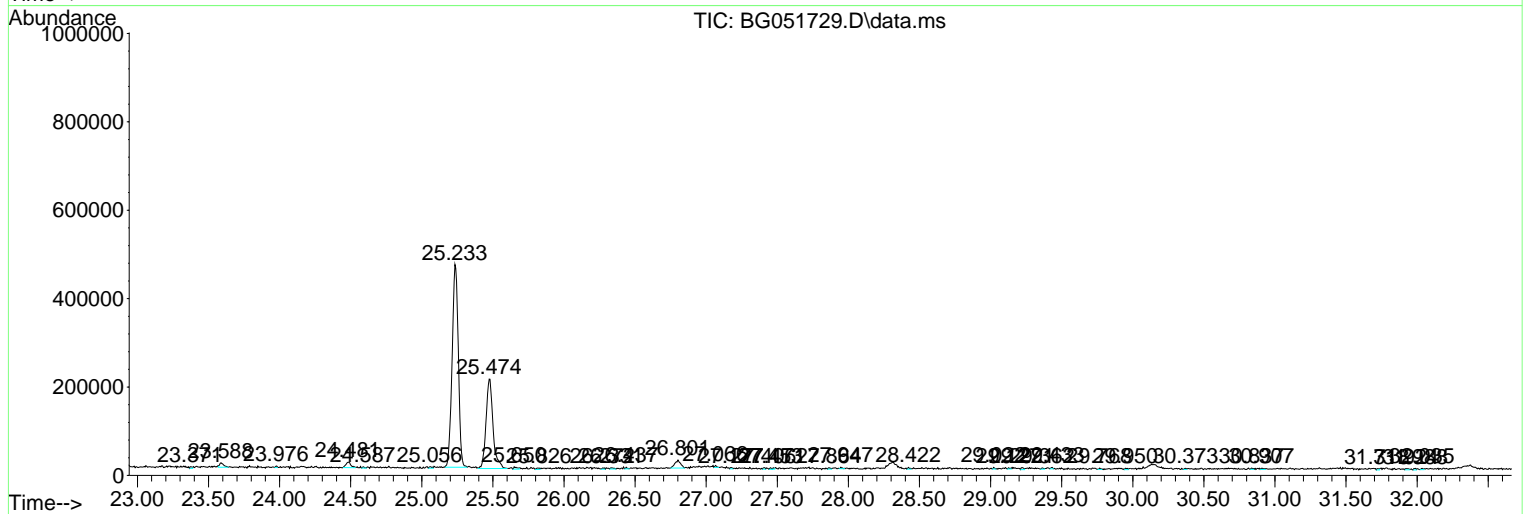
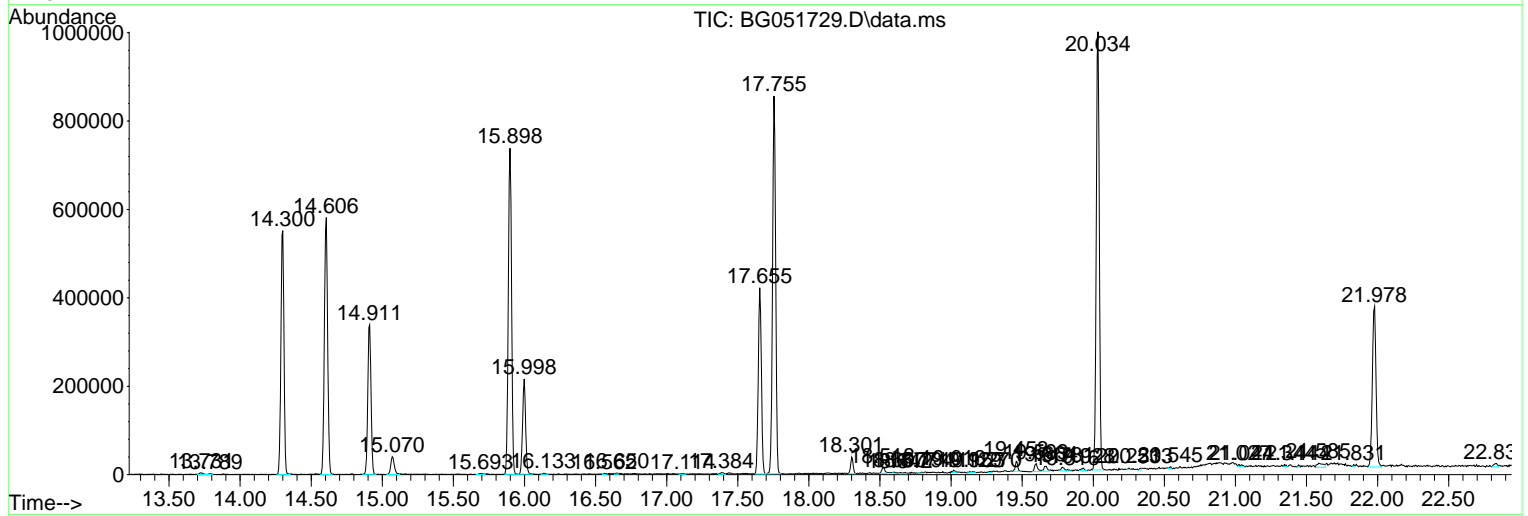
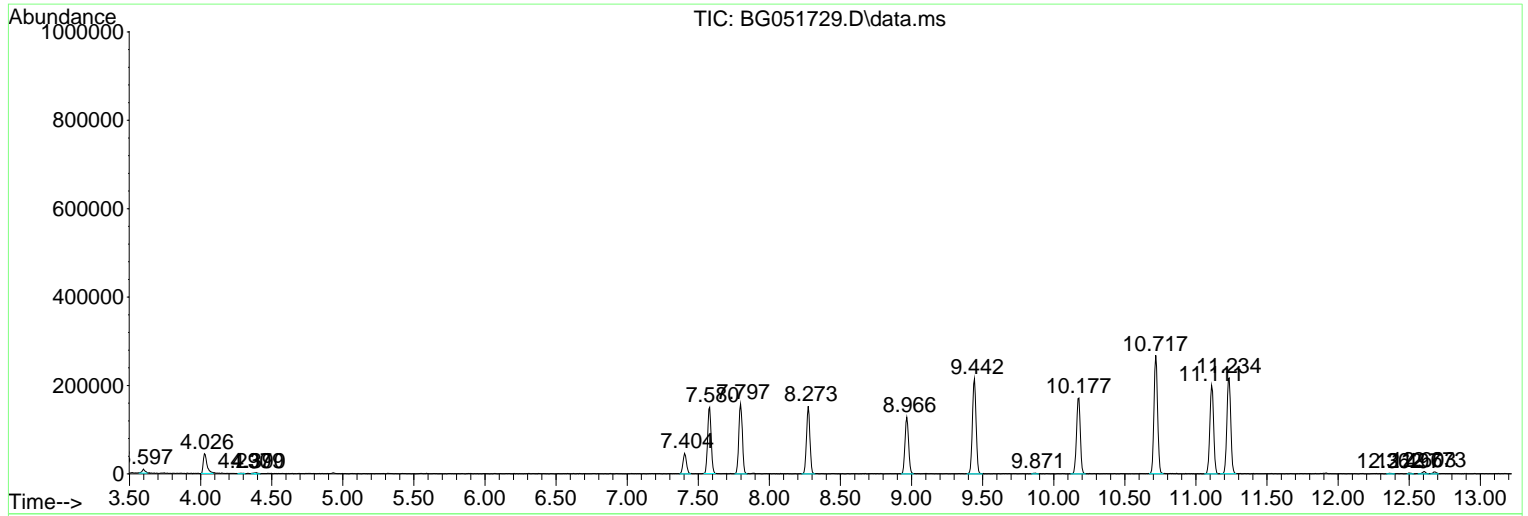
Sum of corrected areas: 13655703

Data Path : Z:\svoasrv\HPCHEM1\BNA_G\Data\BG122021\
 Data File : BG051729.D
 Acq On : 21 Dec 2021 23:41
 Operator : CG/JU
 Sample : M5126-03
 Misc :
 ALS Vial : 56 Sample Multiplier: 1

Instrument :
 BNA_G
ClientSampleId :
 C0J12

Quant Method : Z:\svoasrv\HPCHEM1\BNA_G\Methods\SFAM-EPA-BG121421.M
 Quant Title : SVOA CALIBRATION

TIC Library : C:\DATABASE\NIST20.L
 TIC Integration Parameters: LSCINT.P



Library Search Compound Report

Data Path : Z:\svoasrv\HPCHEM1\BNA_G\Data\BG122021\
Data File : BG051729.D
Acq On : 21 Dec 2021 23:41
Operator : CG/JU
Sample : M5126-03
Misc :
ALS Vial : 56 Sample Multiplier: 1

Instrument :
BNA_G
ClientSampleId :
C0J12

Quant Method : Z:\svoasrv\HPCHEM1\BNA_G\Methods\SFAM-EPA-BG121421.M
Quant Title : SVOA CALIBRATION

TIC Library : C:\DATABASE\NIST20.L
TIC Integration Parameters: LSCINT.P

No Library Search Compounds Detected

Data Path : Z:\svoasrv\HPCHEM1\BNA_G\Data\BG122021\
Data File : BG051729.D
Acq On : 21 Dec 2021 23:41
Operator : CG/JU
Sample : M5126-03
Misc :
ALS Vial : 56 Sample Multiplier: 1

Instrument :
BNA_G
ClientSampleId :
C0J12

Quant Method : Z:\svoasrv\HPCHEM1\BNA_G\Methods\SFAM-EPA-BG121421.M
Quant Title : SVOA CALIBRATION

TIC Library : C:\DATABASE\NIST0.L
TIC Integration Parameters: LSCINT.P

TIC Top Hit name	RT	EstConc	Units	Response	#	RT	Resp	Conc
------------------	----	---------	-------	----------	---	----	------	------
