

Data Path : Z:\svoasrv\HPCHEM1\BNA_G\Data\BG122023\
 Data File : BG060105.D
 Acq On : 20 Dec 2023 19:12
 Operator : MA/JU
 Sample : PB157507BL
 Misc :
 ALS Vial : 3 Sample Multiplier: 1

Instrument :
 BNA_G
 ClientSampleId :
 PB157507BL

Quant Time: Dec 21 03:06:19 2023
 Quant Method : Z:\svoasrv\HPCHEM1\BNA_G\Methods\8270-BG121323.M
 Quant Title : ASP BNA STANDARDS FOR 5 POINT CALIBRATION
 QLast Update : Tue Dec 19 04:37:23 2023
 Response via : Initial Calibration

Compound	R.T.	QIon	Response	Conc	Units	Dev(Min)
Internal Standards						
1) 1,4-Dichlorobenzene-d4	7.947	152	30174	20.000	ng	-0.01
21) Naphthalene-d8	10.756	136	105131	20.000	ng	# 0.00
39) Acenaphthene-d10	14.580	164	111901	20.000	ng	-0.02
64) Phenanthrene-d10	17.330	188	449789	20.000	ng	#-0.02
76) Chrysene-d12	21.602	240	621204	20.000	ng	#-0.02
86) Perylene-d12	24.792	264	710519	20.000	ng	-0.02
System Monitoring Compounds						
5) 2-Fluorophenol	5.521	112	181086	102.735	ng	0.00
7) Phenol-d6	7.113	99	271552	109.521	ng	0.00
23) Nitrobenzene-d5	9.105	82	213053	92.022	ng	-0.02
42) 2,4,6-Tribromophenol	16.079	330	462832	177.479	ng	0.00
45) 2-Fluorobiphenyl	13.206	172	775509	84.820	ng	-0.01
79) Terphenyl-d14	19.957	244	3083251	90.616	ng	-0.01

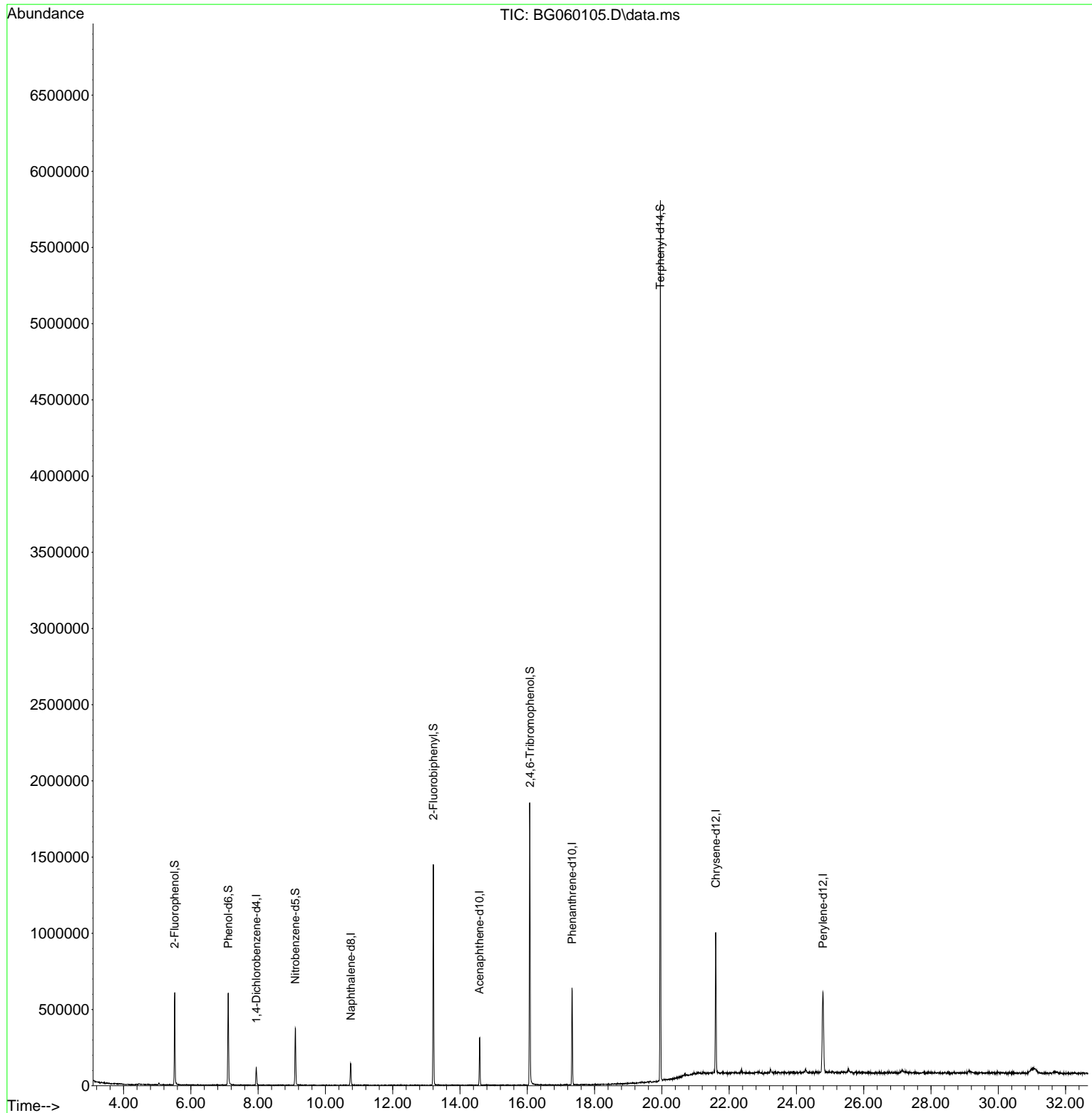
Target Compounds Qvalue

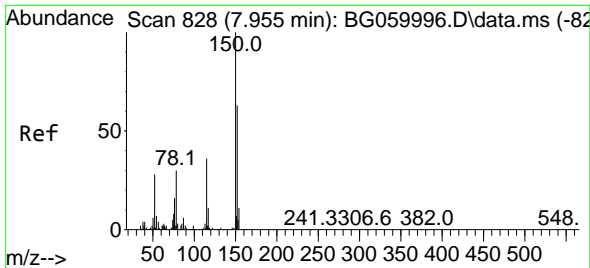
(#) = qualifier out of range (m) = manual integration (+) = signals summed

Data Path : Z:\svoasrv\HPCHEM1\BNA_G\Data\BG122023\
 Data File : BG060105.D
 Acq On : 20 Dec 2023 19:12
 Operator : MA/JU
 Sample : PB157507BL
 Misc :
 ALS Vial : 3 Sample Multiplier: 1

Instrument :
 BNA_G
 ClientSampleId :
 PB157507BL

Quant Time: Dec 21 03:06:19 2023
 Quant Method : Z:\svoasrv\HPCHEM1\BNA_G\Methods\8270-BG121323.M
 Quant Title : ASP BNA STANDARDS FOR 5 POINT CALIBRATION
 QLast Update : Tue Dec 19 04:37:23 2023
 Response via : Initial Calibration

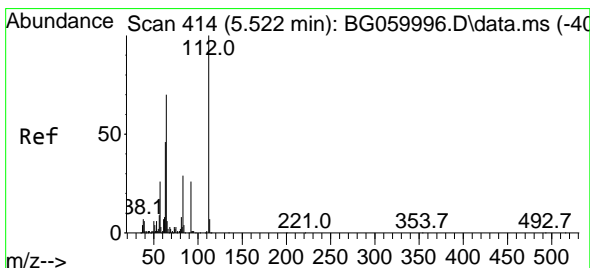
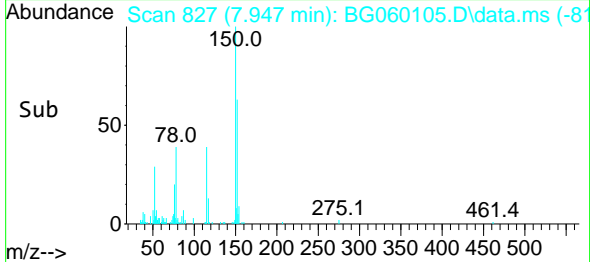
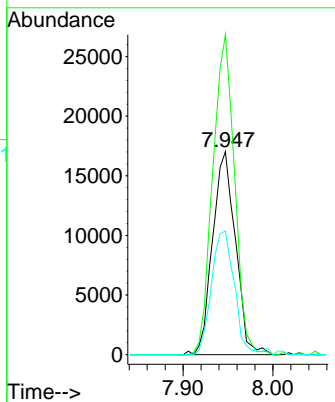
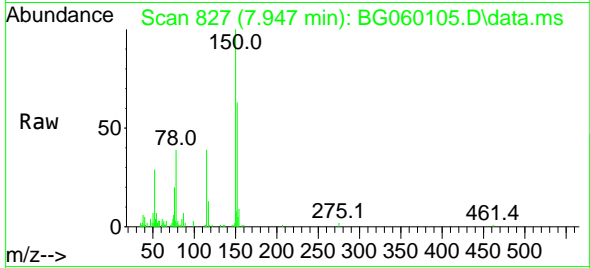




#1
 1,4-Dichlorobenzene-d4
 Concen: 20.000 ng
 RT: 7.947 min Scan# 81
 Delta R.T. -0.012 min
 Lab File: BG060105.D
 Acq: 20 Dec 2023 19:12

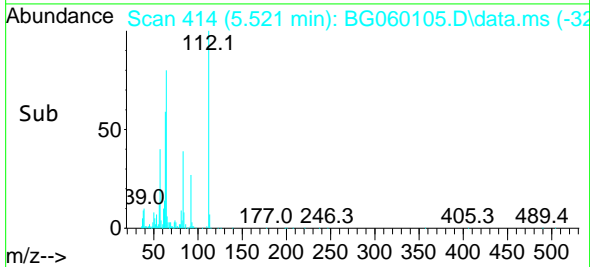
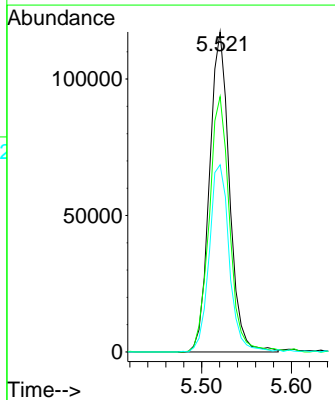
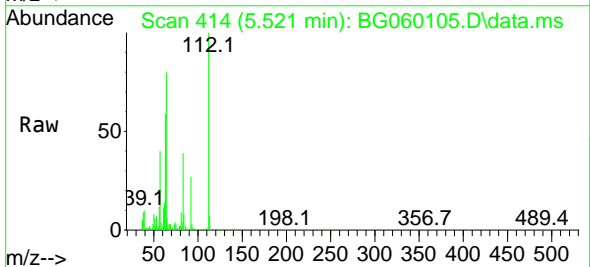
Instrument :
 BNA_G
 ClientSampleId :
 PB157507BL

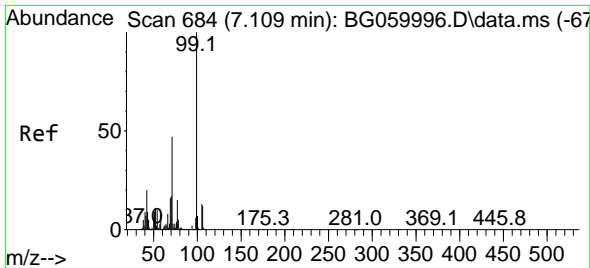
Tgt Ion	Resp	Lower	Upper
152	100		
150	157.6	127.0	190.6
115	61.0	45.7	68.5



#5
 2-Fluorophenol
 Concen: 102.735 ng
 RT: 5.521 min Scan# 414
 Delta R.T. -0.006 min
 Lab File: BG060105.D
 Acq: 20 Dec 2023 19:12

Tgt Ion	Resp	Lower	Upper
112	100		
64	79.8	55.9	83.9
63	58.5	36.5	54.7

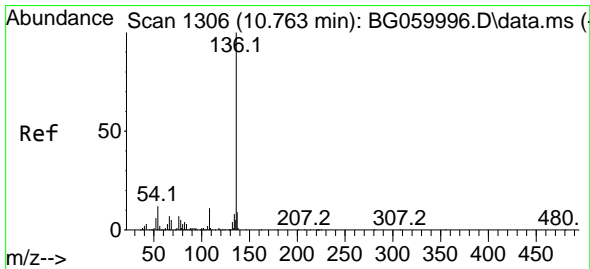
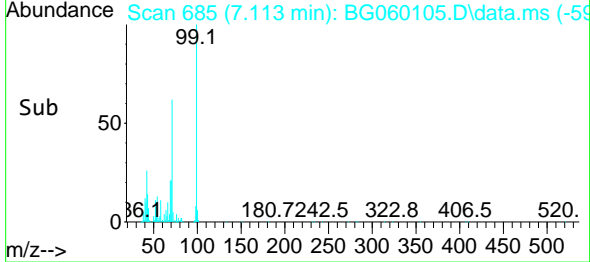
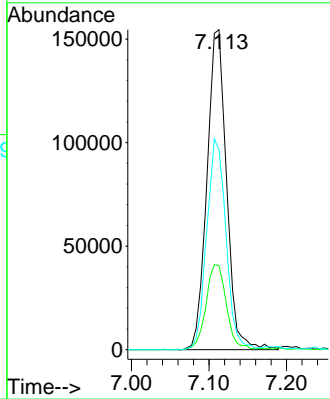
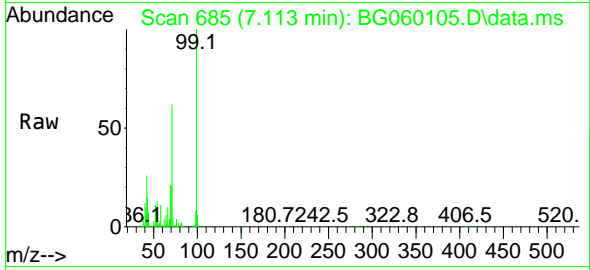




#7
 Phenol-d6
 Concen: 109.521 ng
 RT: 7.113 min Scan# 684
 Delta R.T. 0.000 min
 Lab File: BG060105.D
 Acq: 20 Dec 2023 19:12

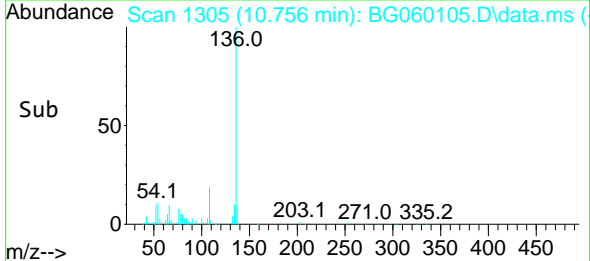
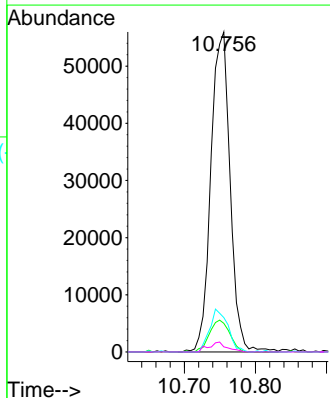
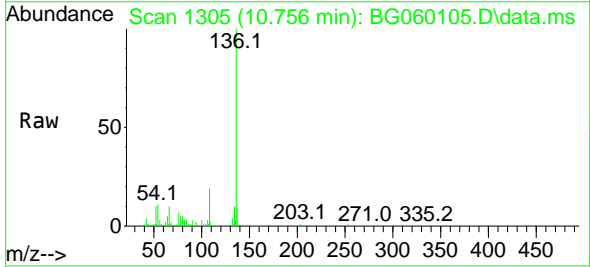
Instrument : BNA_G
 ClientSampleId : PB157507BL

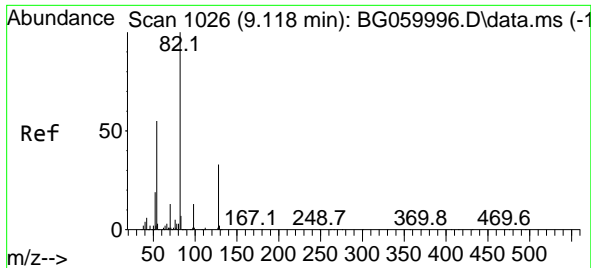
Tgt Ion	Resp	Lower	Upper
99	271552		
99	100		
42	26.3	16.2	24.4#
71	62.4	37.6	56.4#



#21
 Naphthalene-d8
 Concen: 20.000 ng
 RT: 10.756 min Scan# 1305
 Delta R.T. -0.006 min
 Lab File: BG060105.D
 Acq: 20 Dec 2023 19:12

Tgt Ion	Resp	Lower	Upper
136	105131		
136	100		
137	9.0	7.3	10.9
54	10.7	9.6	14.4
68	1.6	4.1	6.1#



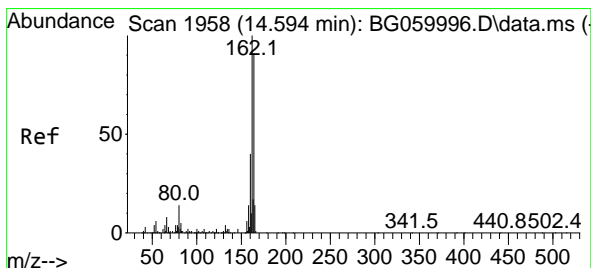
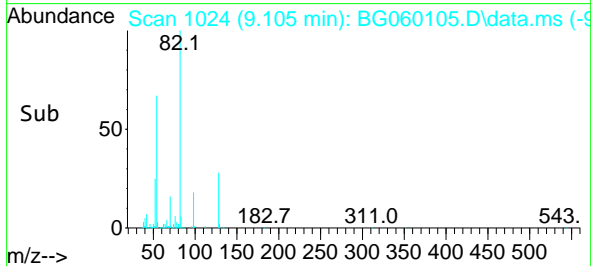
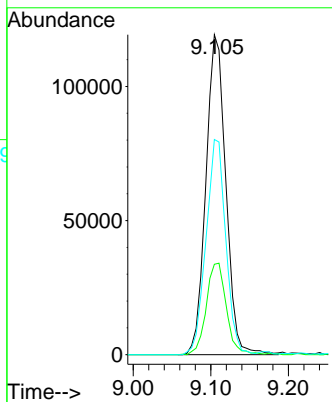
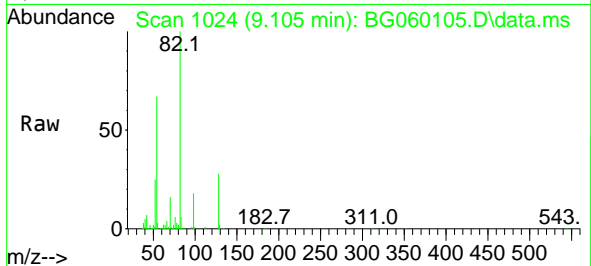


#23
 Nitrobenzene-d5
 Concen: 92.022 ng
 RT: 9.105 min Scan# 10
 Delta R.T. -0.017 min
 Lab File: BG060105.D
 Acq: 20 Dec 2023 19:12

Instrument :
 BNA_G
 ClientSampleId :
 PB157507BL

Tgt Ion: 82 Resp: 213053

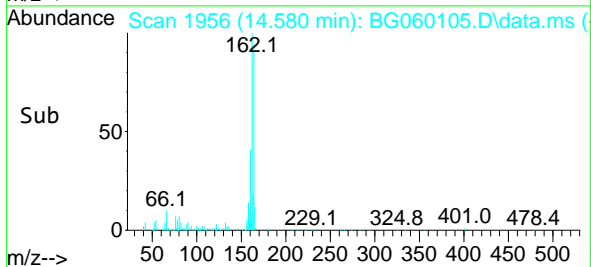
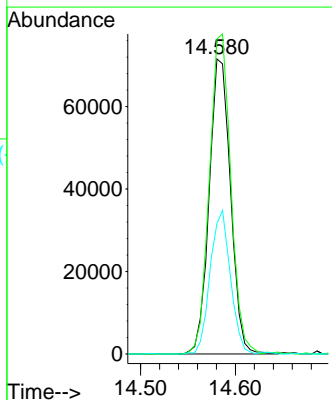
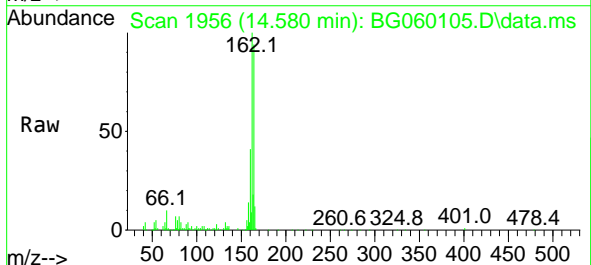
Ion	Ratio	Lower	Upper
82	100		
128	28.2	26.3	39.5
54	67.3	44.3	66.5

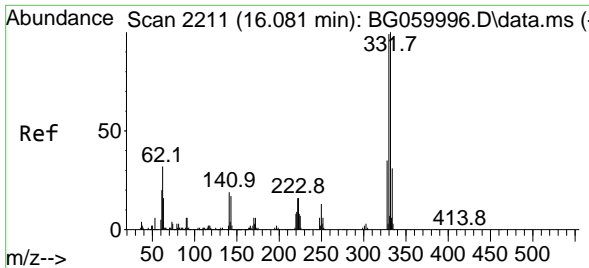


#39
 Acenaphthene-d10
 Concen: 20.000 ng
 RT: 14.580 min Scan# 1956
 Delta R.T. -0.017 min
 Lab File: BG060105.D
 Acq: 20 Dec 2023 19:12

Tgt Ion: 164 Resp: 111901

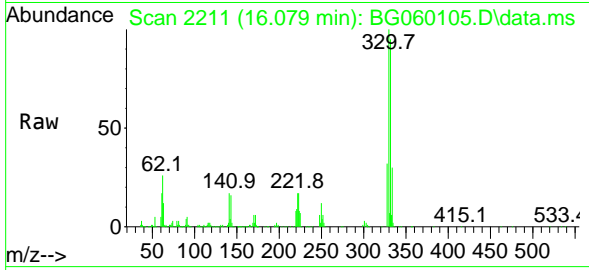
Ion	Ratio	Lower	Upper
164	100		
162	106.8	88.1	132.1
160	44.1	35.4	53.0



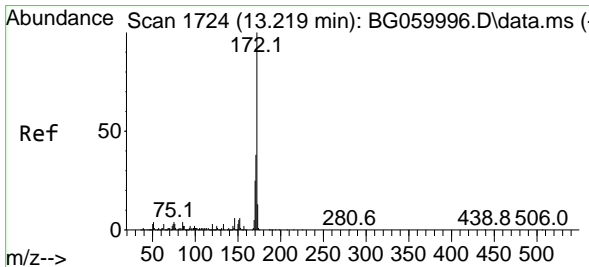
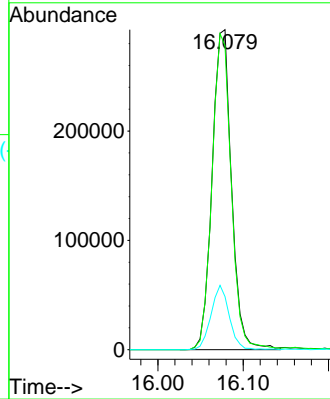
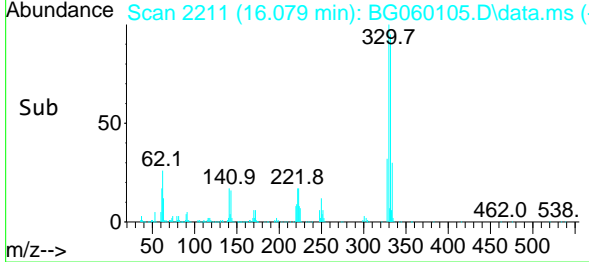


#42
 2,4,6-Tribromophenol
 Concen: 177.479 ng
 RT: 16.079 min Scan# 21
 Delta R.T. -0.006 min
 Lab File: BG060105.D
 Acq: 20 Dec 2023 19:12

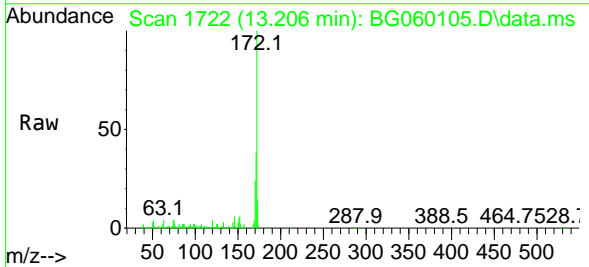
Instrument :
 BNA_G
 ClientSampleId :
 PB157507BL



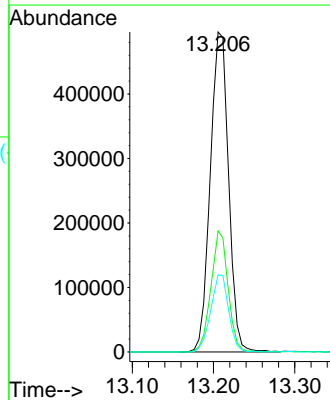
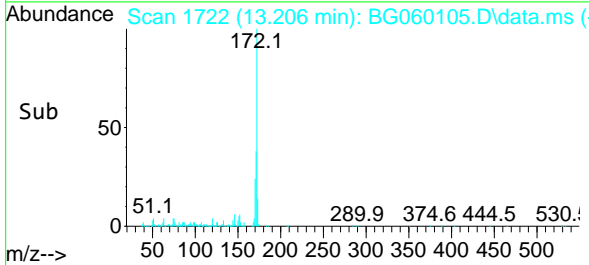
Tgt Ion: 330 Resp: 462832
 Ion Ratio Lower Upper
 330 100
 332 97.7 76.2 114.4
 141 19.0 14.3 21.5

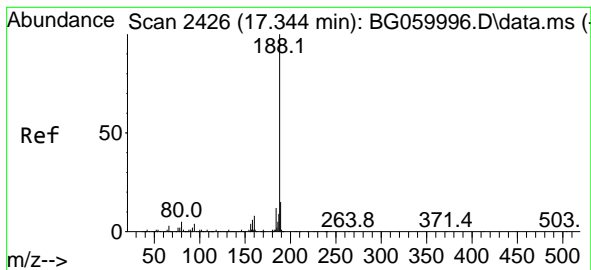


#45
 2-Fluorobiphenyl
 Concen: 84.820 ng
 RT: 13.206 min Scan# 1722
 Delta R.T. -0.012 min
 Lab File: BG060105.D
 Acq: 20 Dec 2023 19:12



Tgt Ion: 172 Resp: 775509
 Ion Ratio Lower Upper
 172 100
 171 37.8 30.1 45.1
 170 24.1 20.0 30.0



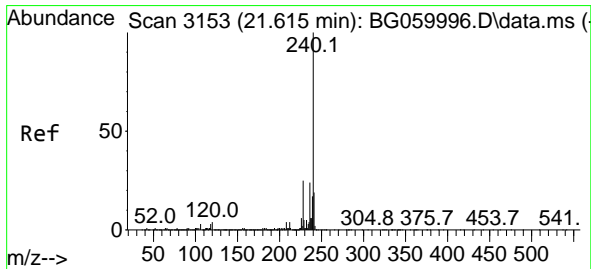
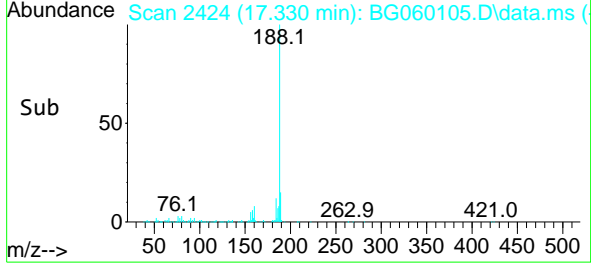
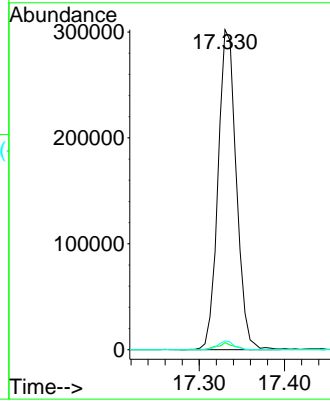
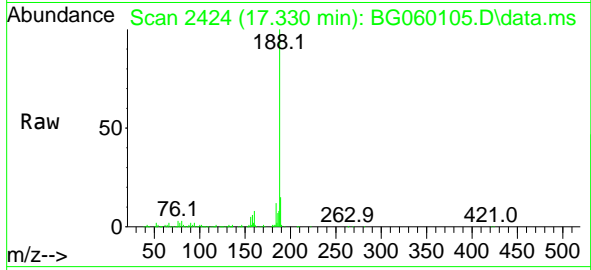


#64
 Phenanthrene-d10
 Concen: 20.000 ng
 RT: 17.330 min Scan# 24
 Delta R.T. -0.017 min
 Lab File: BG060105.D
 Acq: 20 Dec 2023 19:12

Instrument :
 BNA_G
 ClientSampleId :
 PB157507BL

Tgt Ion:188 Resp: 449789

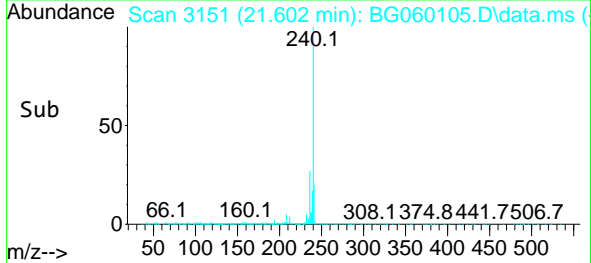
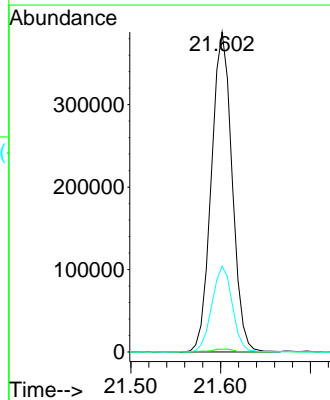
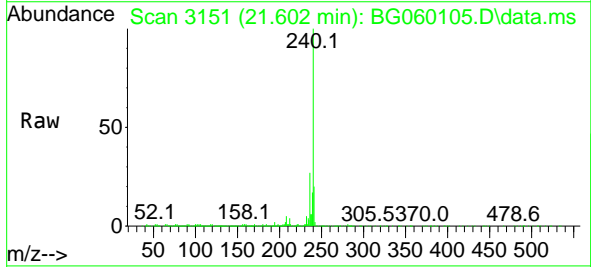
Ion	Ratio	Lower	Upper
188	100		
94	2.2	3.0	4.6#
80	2.7	4.0	6.0#

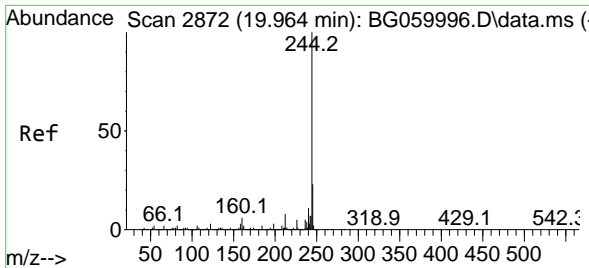


#76
 Chrysene-d12
 Concen: 20.000 ng
 RT: 21.602 min Scan# 3151
 Delta R.T. -0.017 min
 Lab File: BG060105.D
 Acq: 20 Dec 2023 19:12

Tgt Ion:240 Resp: 621204

Ion	Ratio	Lower	Upper
240	100		
120	0.8	2.9	4.3#
236	26.8	19.4	29.2



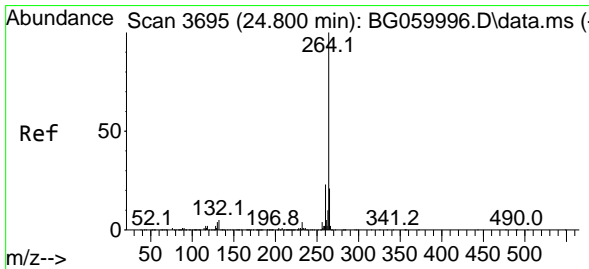
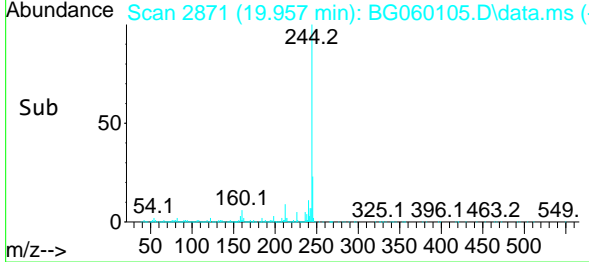
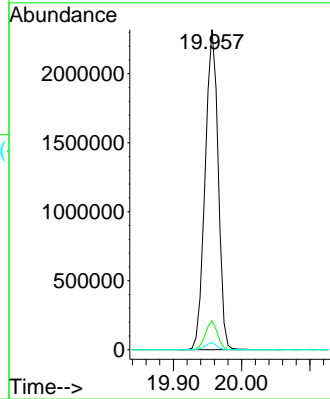
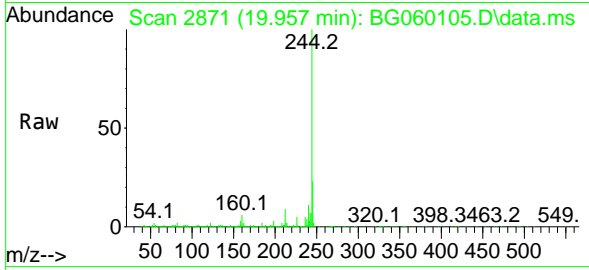


#79
 Terphenyl-d14
 Concen: 90.616 ng
 RT: 19.957 min Scan# 21
 Delta R.T. -0.012 min
 Lab File: BG060105.D
 Acq: 20 Dec 2023 19:12

Instrument : BNA_G
 ClientSampleId : PB157507BL

Tgt Ion:244 Resp: 3083251

Ion	Ratio	Lower	Upper
244	100		
212	9.0	6.8	10.2
122	2.2	2.6	3.8



#86
 Perylene-d12
 Concen: 20.000 ng
 RT: 24.792 min Scan# 3694
 Delta R.T. -0.023 min
 Lab File: BG060105.D
 Acq: 20 Dec 2023 19:12

Tgt Ion:264 Resp: 710519

Ion	Ratio	Lower	Upper
264	100		
260	23.3	18.5	27.7
265	20.9	17.3	25.9

