

Data Path : Z:\HPCHEM1\BNA G\DATA\BG122116\
 Data File : BG025368.D
 Acq On : 21 Dec 2016 22:02
 Operator : UM/SJ
 Sample : H6103-05
 Misc : LOD 5 PPM
 ALS Vial : 6 Sample Multiplier: 1

Instrument :
 BNA_G
ClientSampleId :
 LOD-WATER-05-QT1-2017

Manual Integrations
APPROVED
 sohil
 12/22/2016 7:03:31 PM

Quant Time: Dec 22 04:48:22 2016
 Quant Method : Z:\HPCHEM1\BNA G\METHODS\8270-BG122116.M
 Quant Title : ASP BNA STANDARDS FOR 5 POINT CALIBRATION
 QLast Update : Wed Dec 21 18:42:01 2016
 Response via : Initial Calibration

Internal Standards	R.T.	QIon	Response	Conc	Units	Dev(Min)
1) 1,4-Dichlorobenzene-d4	8.21	152	47110	20.00	ng	0.00
21) Naphthalene-d8	11.04	136	198412	20.00	ng	0.00
38) Acenaphthene-d10	14.84	164	154510	20.00	ng	0.00
63) Phenanthrene-d10	17.58	188	363275	20.00	ng	0.00
75) Chrysene-d12	21.88	240	546859	20.00	ng	0.00
86) Perylene-d12	25.28	264	581784	20.00	ng	-0.01
System Monitoring Compounds						
5) 2-Fluorophenol	5.75	112	397665	153.43	ng	0.00
7) Phenol-d6	7.38	99	539927	147.92	ng	0.00
23) Nitrobenzene-d5	9.40	82	416423	92.72	ng	0.00
41) 2,4,6-Tribromophenol	16.33	330	332170	133.53	ng	0.00
44) 2-Fluorobiphenyl	13.46	172	892367	93.50	ng	0.00
78) Terphenyl-d14	20.17	244	1775355	86.08	ng	0.00
Target Compounds						
32) Benzoic acid	10.37	122	6108m	2.45	ng	Qvalue
35) Caprolactam	11.99	113	4670m	3.75	ng	
55) 4-Nitrophenol	15.11	139	5642	3.19	ng	# 47
64) 4,6-Dinitro-2-methylphenol	16.01	198	7827	3.11	ng	93
69) Pentachlorophenol	17.25	266	9426	3.54	ng	# 85

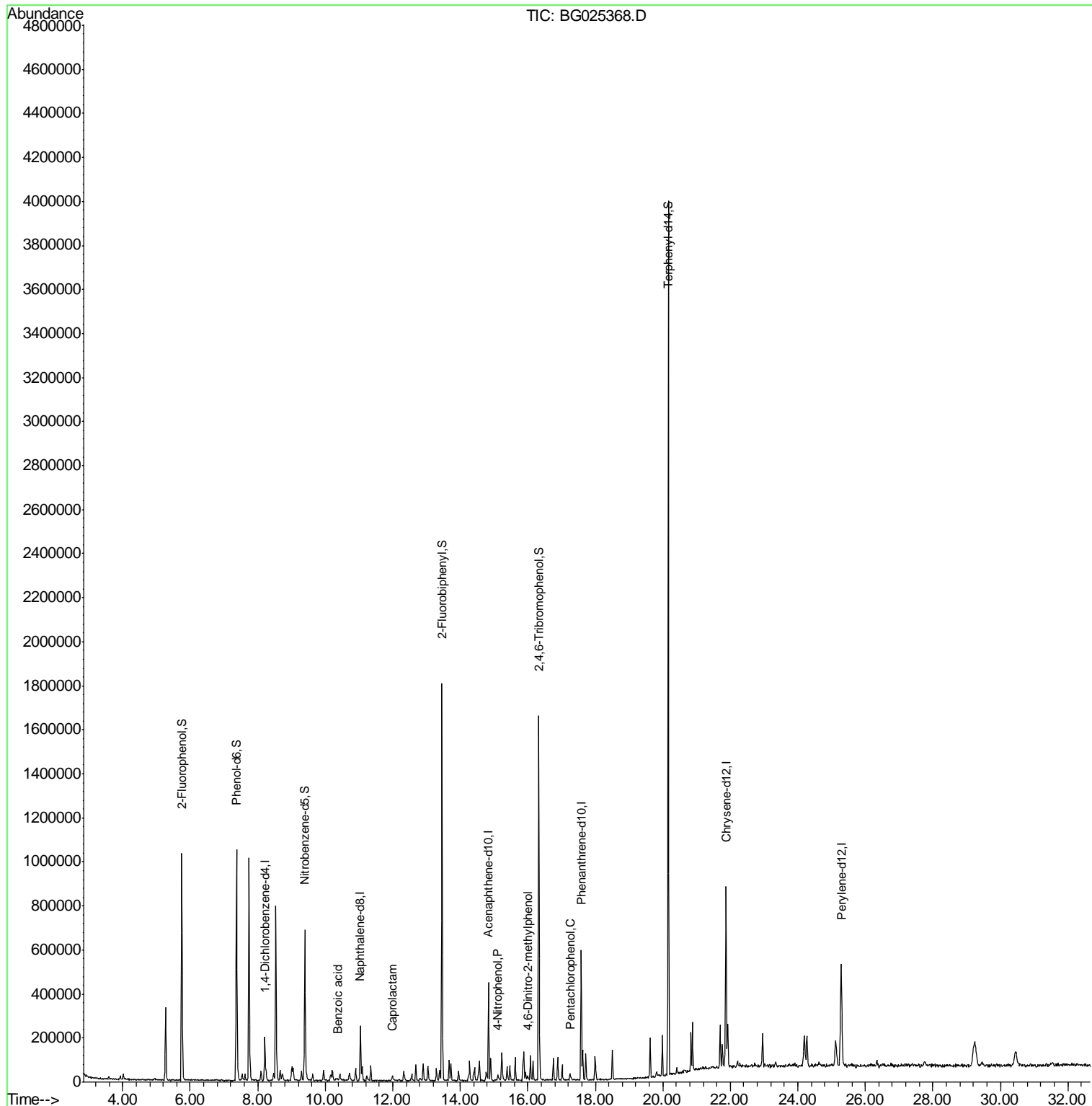
(#) = qualifier out of range (m) = manual integration (+) = signals summed

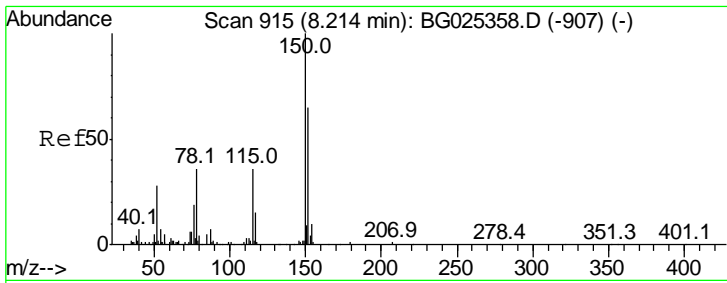
Data Path : Z:\HPCHEM1\BNA G\DATA\BG122116\
 Data File : BG025368.D
 Acq On : 21 Dec 2016 22:02
 Operator : UM/SJ
 Sample : H6103-05
 Misc : LOD 5 PPM
 ALS Vial : 6 Sample Multiplier: 1

Instrument :
 BNA_G
ClientSampled :
 LOD-WATER-05-QT1-2017

Manual Integrations
APPROVED
 sohil
 12/22/2016 7:03:31 PM

Quant Time: Dec 22 04:48:22 2016
 Quant Method : Z:\HPCHEM1\BNA G\METHODS\8270-BG122116.M
 Quant Title : ASP BNA STANDARDS FOR 5 POINT CALIBRATION
 QLast Update : Wed Dec 21 18:42:01 2016
 Response via : Initial Calibration



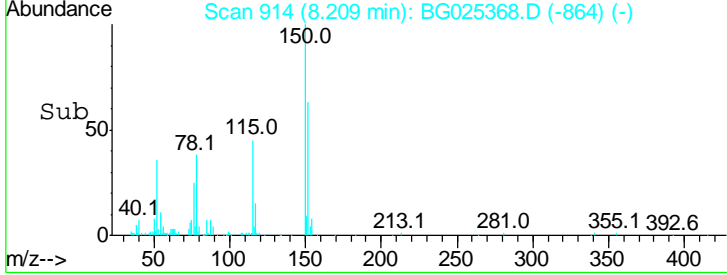
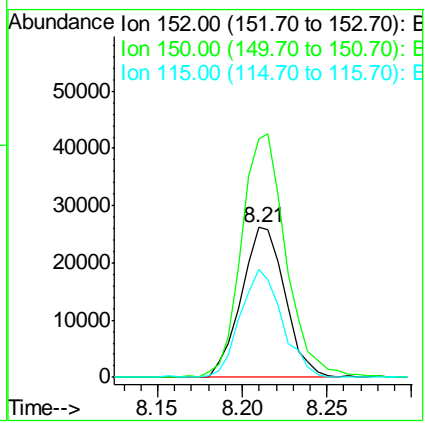
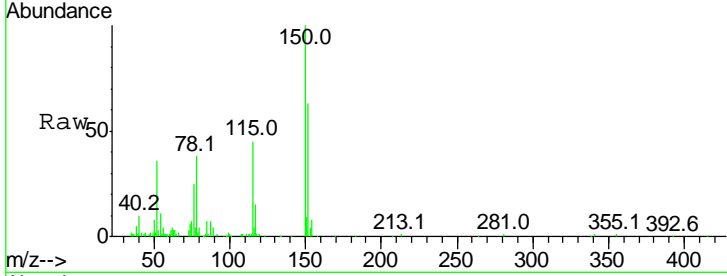


#1
 1,4-Dichlorobenzene-d4
 Concen: 20.00 ng
 RT: 8.21 min Scan# 914
 Delta R.T. -0.00 min
 Lab File: BG025368.D
 Acq: 21 Dec 2016 22:02

Instrument :
 BNA_G
ClientSampled :
 LOD-WATER-05-QT1-2017

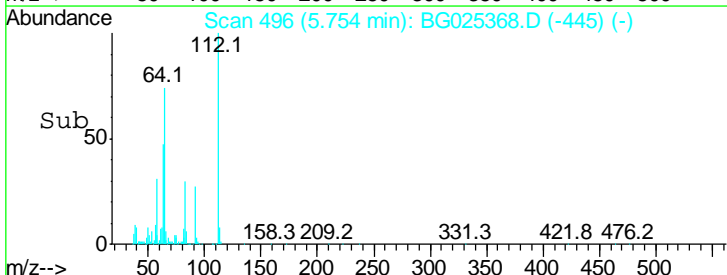
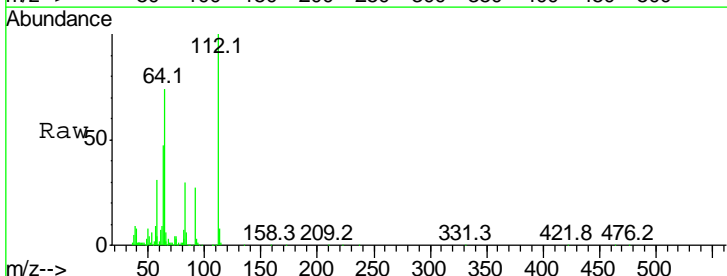
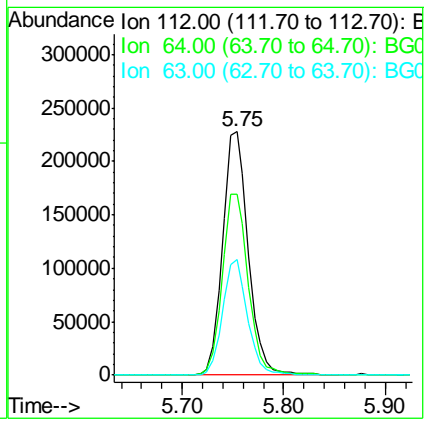
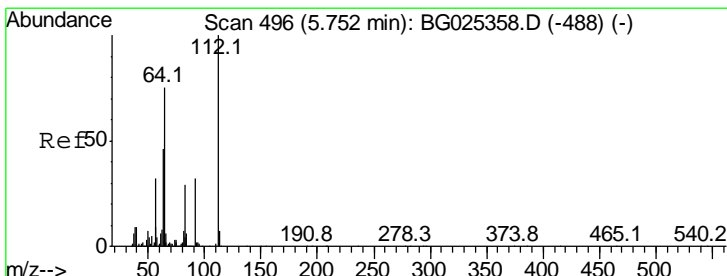
Tgt Ion	Resp	Lower	Upper
152	47110		
152	100		
150	159.3	114.0	171.0
115	72.2	48.1	72.1#

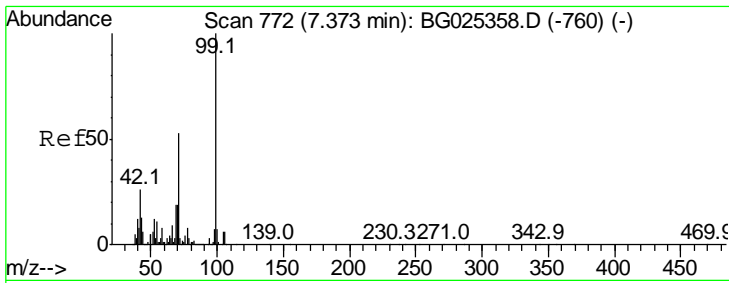
Manual Integrations
APPROVED
 sohil
 12/22/2016 7:03:31 PM



#5
 2-Fluorophenol
 Concen: 153.43 ng
 RT: 5.75 min Scan# 496
 Delta R.T. 0.00 min
 Lab File: BG025368.D
 Acq: 21 Dec 2016 22:02

Tgt Ion	Resp	Lower	Upper
112	397665		
112	100		
64	74.3	61.8	92.6
63	47.3	37.2	55.8





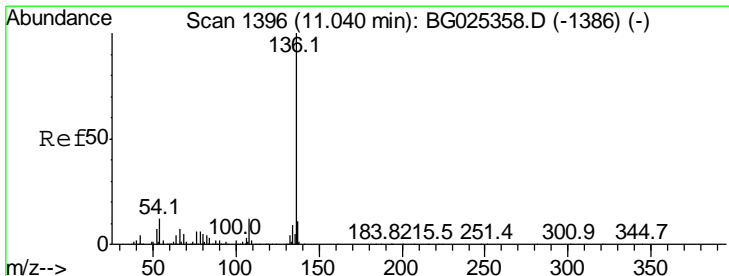
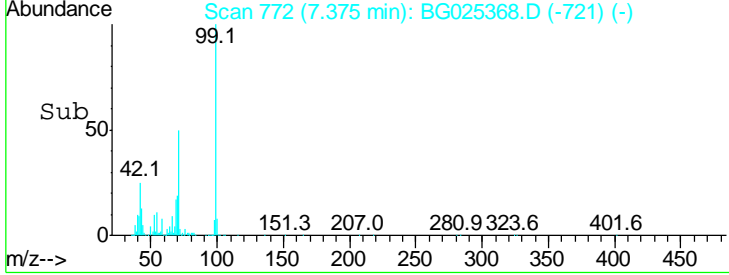
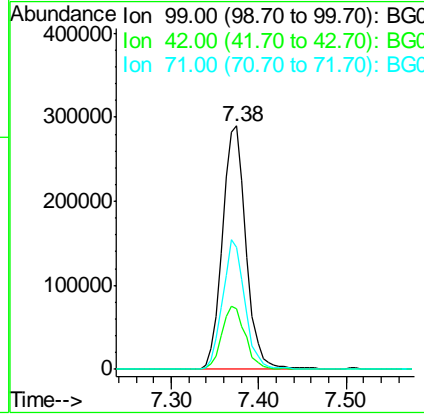
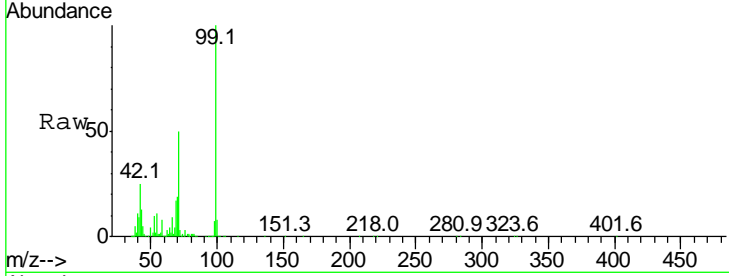
#7
 Phenol-d6
 Concen: 147.92 ng
 RT: 7.38 min Scan# 772
 Delta R.T. 0.00 min
 Lab File: BG025368.D
 Acq: 21 Dec 2016 22:02

Instrument :
 BNA_G
ClientSampled :
 LOD-WATER-05-QT1-2017

Tgt Ion	Resp	Lower	Upper
99	100		
42	25.0	20.5	30.7
71	50.4	37.6	56.4

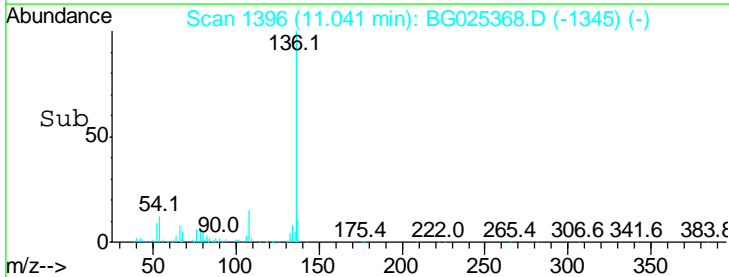
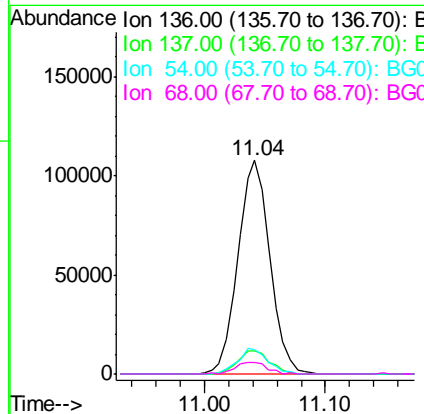
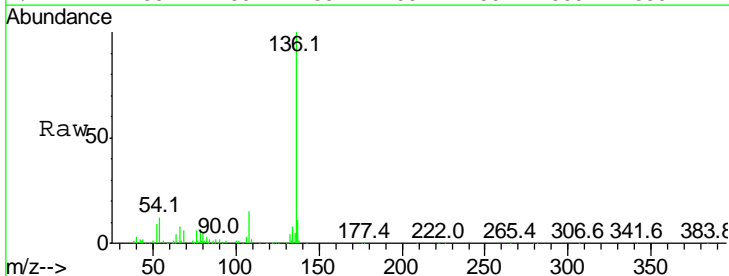
Manual Integrations
APPROVED

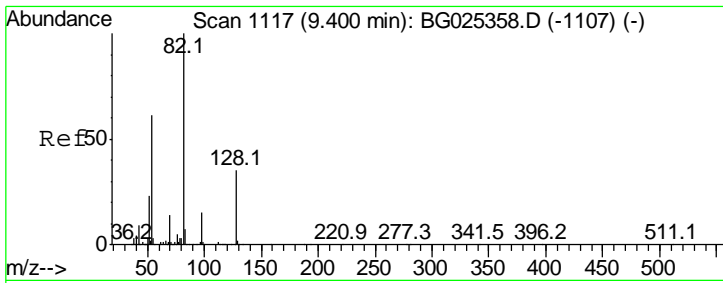
sohil
 12/22/2016 7:03:31 PM



#21
 Naphthalene-d8
 Concen: 20.00 ng
 RT: 11.04 min Scan# 1396
 Delta R.T. 0.00 min
 Lab File: BG025368.D
 Acq: 21 Dec 2016 22:02

Tgt Ion	Resp	Lower	Upper
136	100		
137	10.6	8.9	13.3
54	11.7	9.3	13.9
68	5.6	5.1	7.7





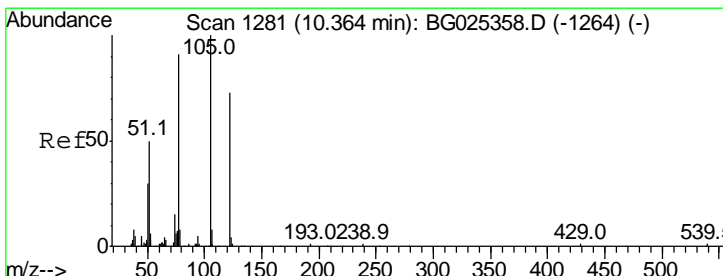
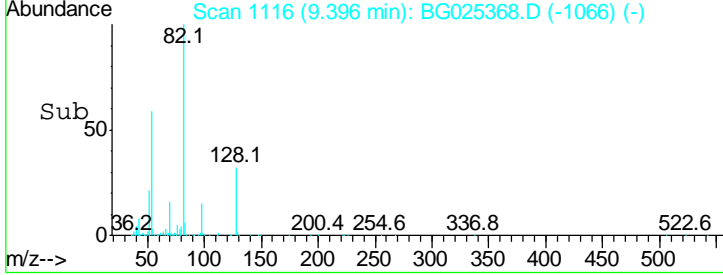
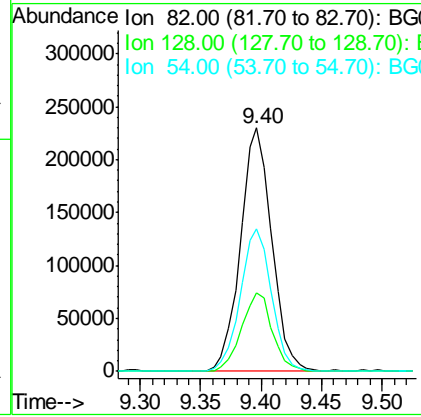
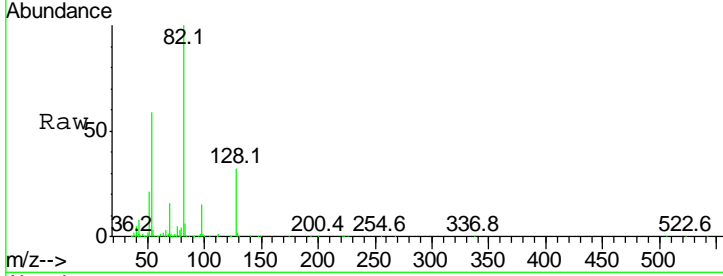
#23
 Nitrobenzene-d5
 Concen: 92.72 ng
 RT: 9.40 min Scan# 1116
 Delta R.T. -0.00 min
 Lab File: BG025368.D
 Acq: 21 Dec 2016 22:02

Instrument :
 BNA_G
ClientSampled :
 LOD-WATER-05-QT1-2017

Tgt Ion	Resp	Lower	Upper
82	416423		
82	100		
128	32.0	26.4	39.6
54	58.5	49.4	74.2

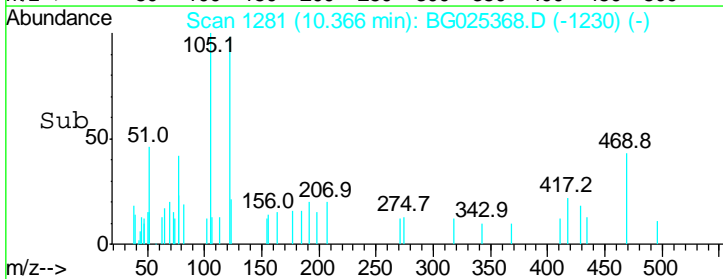
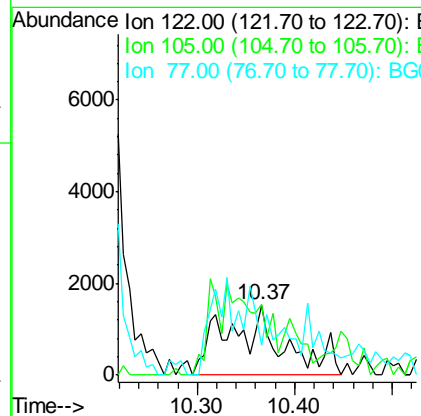
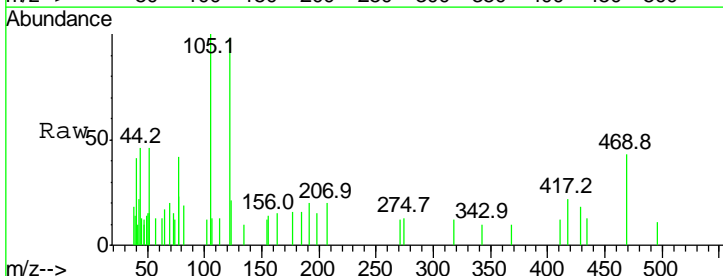
Manual Integrations
APPROVED

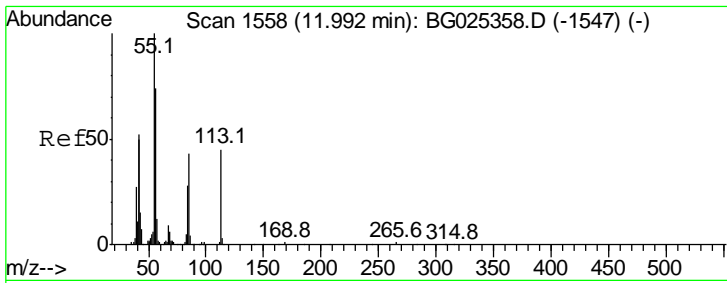
sohil
 12/22/2016 7:03:31 PM



#32
 Benzoic acid
 Concen: 2.45 ng m
 RT: 10.37 min Scan# 1281
 Delta R.T. 0.00 min
 Lab File: BG025368.D
 Acq: 21 Dec 2016 22:02

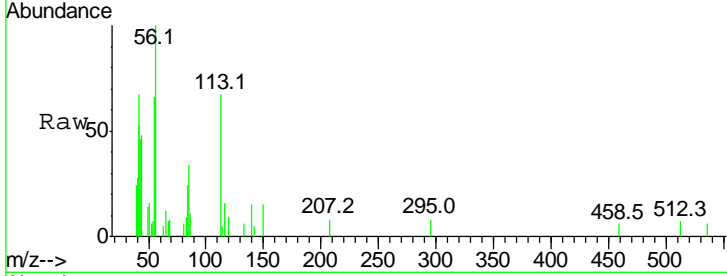
Tgt Ion	Resp	Lower	Upper
122	6108		
122	100		
105	102.1	120.1	160.1#
77	42.5	104.6	144.6#





#35
 Caprolactam
 Concen: 3.75 ng/ml
 RT: 11.99 min Scan# 1558
 Delta R.T. 0.00 min
 Lab File: BG025368.D
 Acq: 21 Dec 2016 22:02

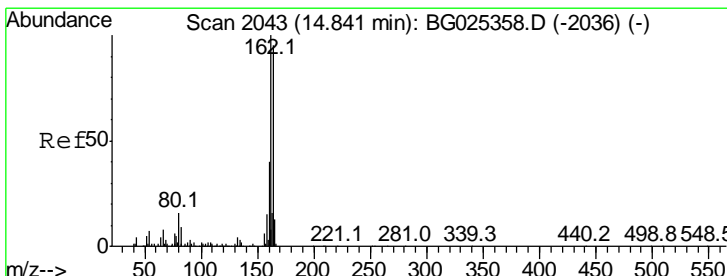
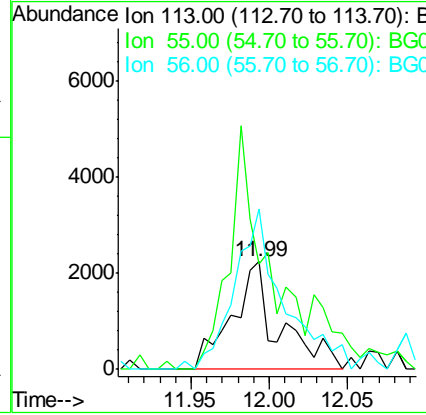
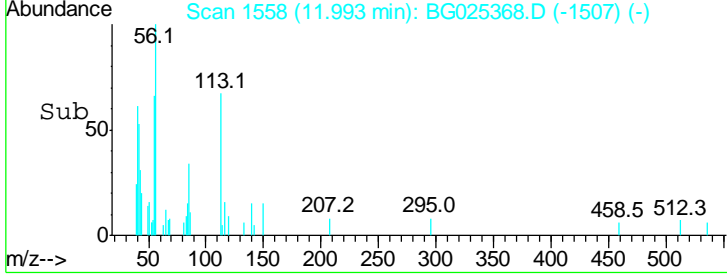
Instrument : BNA_G
 Client Sampled : LOD-WATER-05-QT1-2017



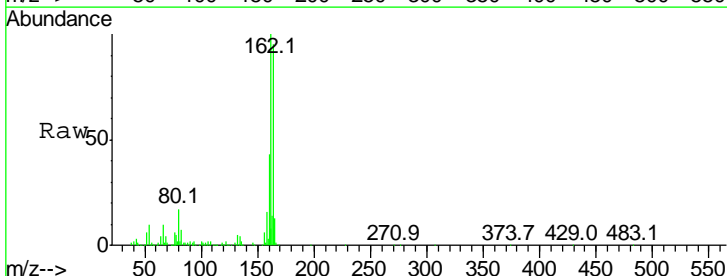
Tgt Ion: 113 Resp: 4670

Ion	Ratio	Lower	Upper
113	100		
55	98.1	198.6	238.6#
56	148.8	140.4	180.4

Manual Integrations APPROVED
 sohil
 12/22/2016 7:03:31 PM

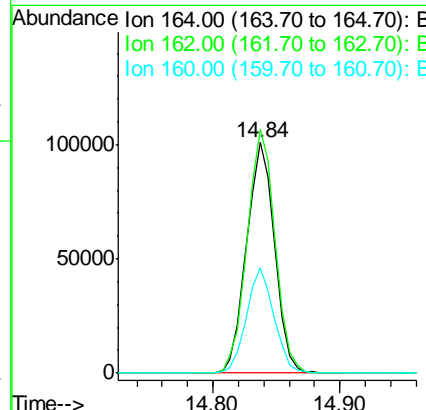
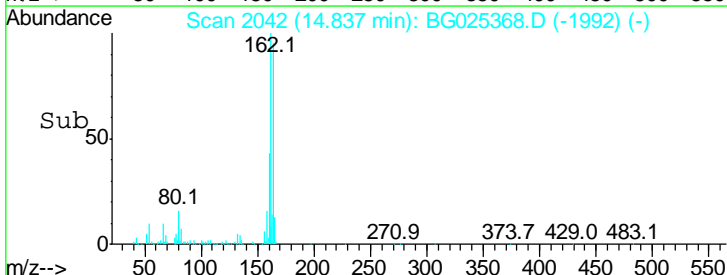


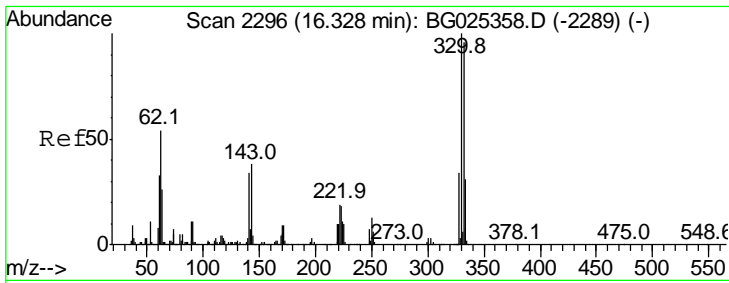
#38
 Acenaphthene-d10
 Concen: 20.00 ng
 RT: 14.84 min Scan# 2042
 Delta R.T. -0.00 min
 Lab File: BG025368.D
 Acq: 21 Dec 2016 22:02



Tgt Ion: 164 Resp: 154510

Ion	Ratio	Lower	Upper
164	100		
162	105.7	85.1	127.7
160	45.6	34.7	52.1





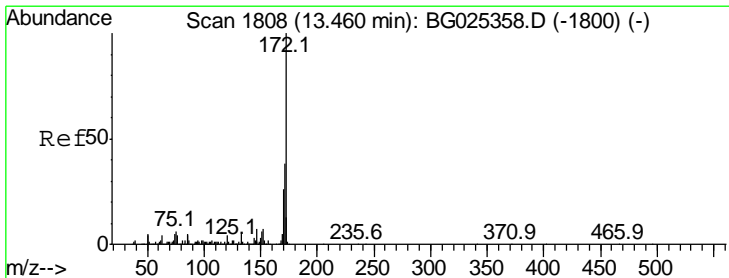
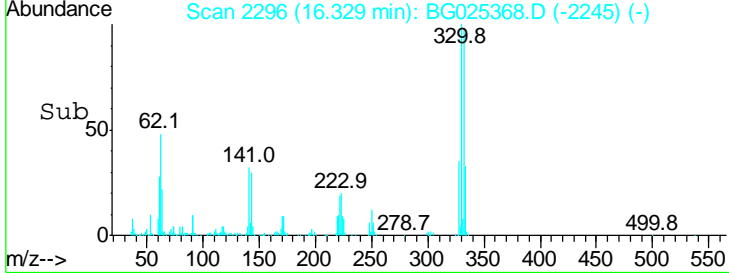
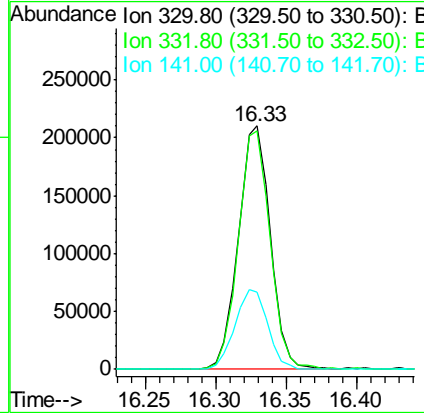
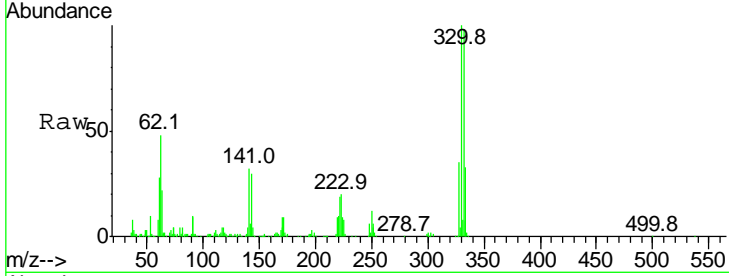
#41
 2,4,6-Tribromophenol
 Concen: 133.53 ng
 RT: 16.33 min Scan# 2296
 Delta R.T. 0.00 min
 Lab File: BG025368.D
 Acq: 21 Dec 2016 22:02

Instrument :
 BNA_G
ClientSampled :
 LOD-WATER-05-QT1-2017

Tgt Ion	Ratio	Lower	Upper
330	100		
332	97.6	77.3	115.9
141	33.8	32.1	48.1

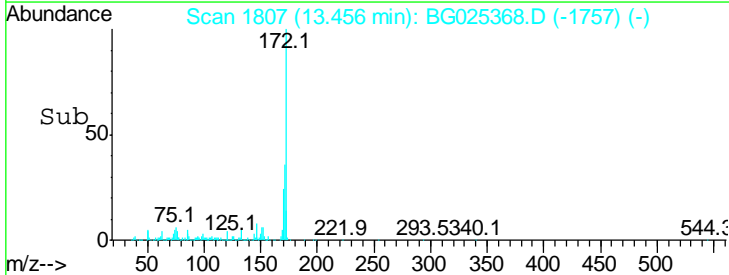
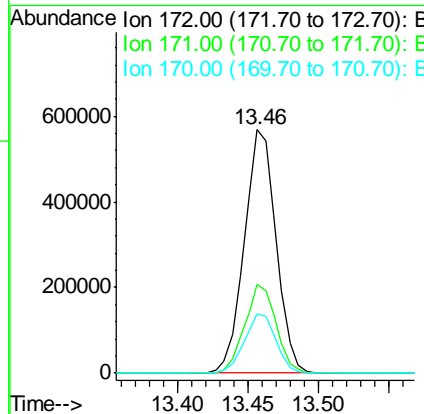
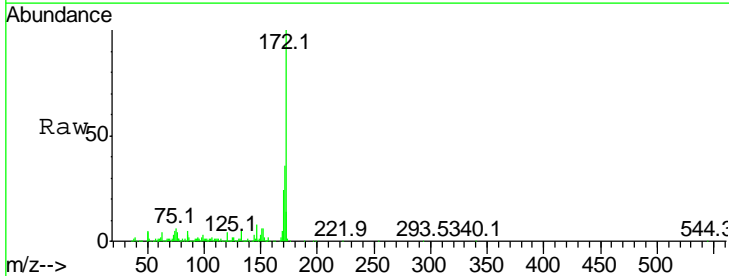
Manual Integrations
APPROVED

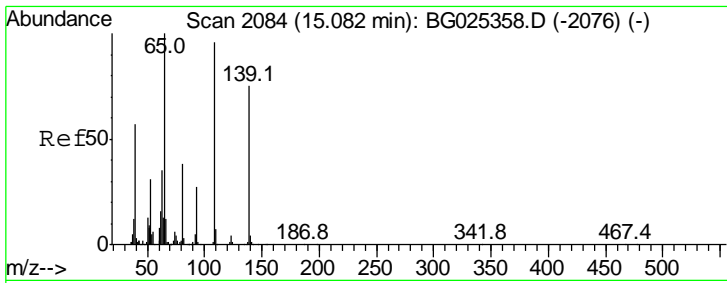
sohil
 12/22/2016 7:03:31 PM



#44
 2-Fluorobiphenyl
 Concen: 93.50 ng
 RT: 13.46 min Scan# 1807
 Delta R.T. -0.00 min
 Lab File: BG025368.D
 Acq: 21 Dec 2016 22:02

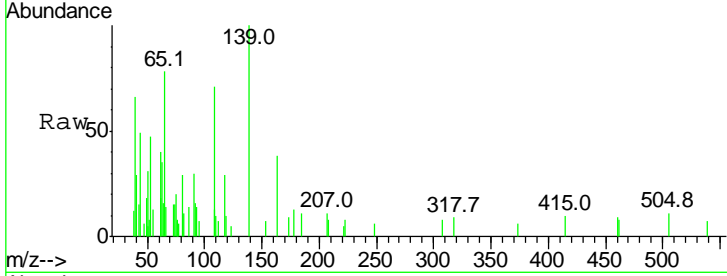
Tgt Ion	Ratio	Lower	Upper
172	100		
171	36.4	32.2	48.2
170	24.5	21.8	32.6





#55
 4-Nitrophenol
 Concen: 3.19 ng
 RT: 15.11 min Scan# 2089
 Delta R.T. 0.03 min
 Lab File: BG025368.D
 Acq: 21 Dec 2016 22:02

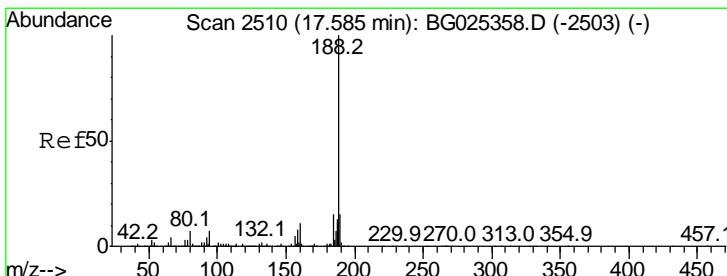
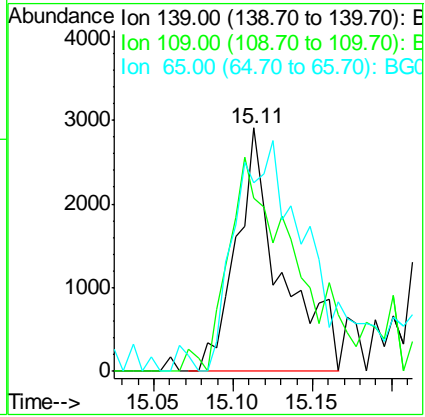
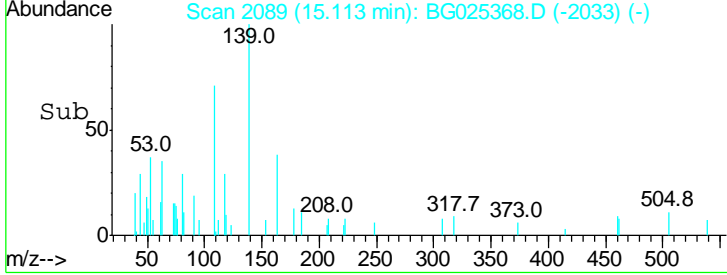
Instrument :
 BNA_G
ClientSampled :
 LOD-WATER-05-QT1-2017



Tgt Ion: 139 Resp: 5642

Ion	Ratio	Lower	Upper
139	100		
109	71.3	101.2	141.2#
65	77.7	135.3	175.3#

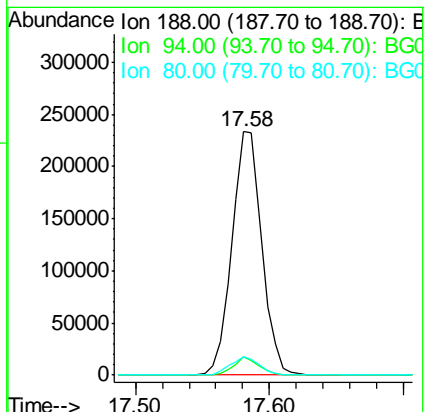
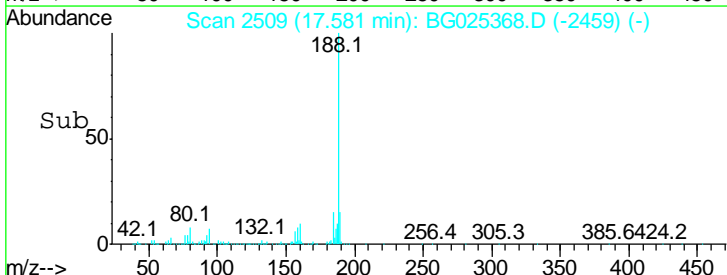
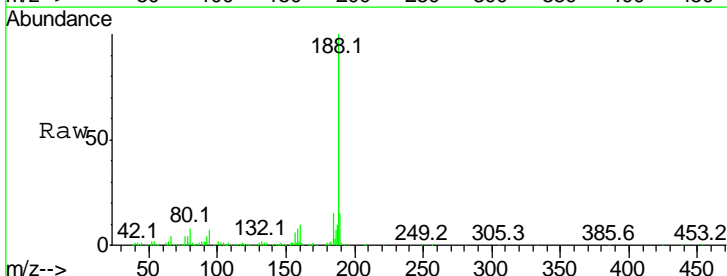
Manual Integrations
APPROVED
 sohil
 12/22/2016 7:03:31 PM

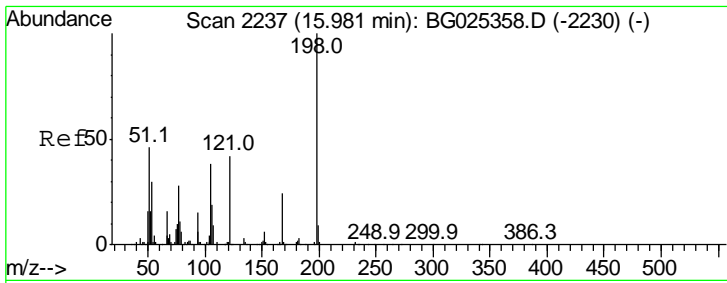


#63
 Phenanthrene-d10
 Concen: 20.00 ng
 RT: 17.58 min Scan# 2509
 Delta R.T. -0.00 min
 Lab File: BG025368.D
 Acq: 21 Dec 2016 22:02

Tgt Ion: 188 Resp: 363275

Ion	Ratio	Lower	Upper
188	100		
94	7.4	5.8	8.8
80	7.6	7.5	11.3





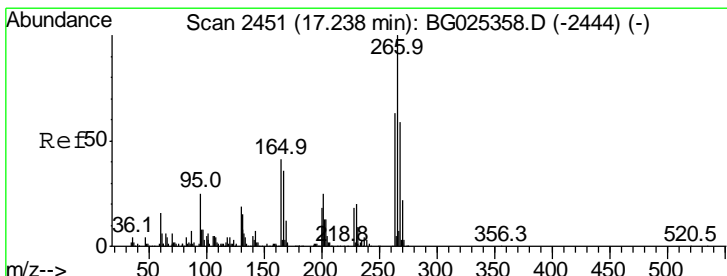
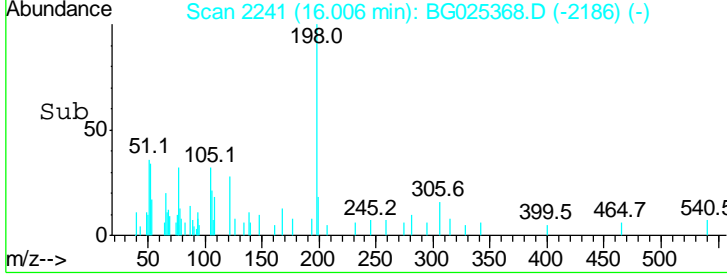
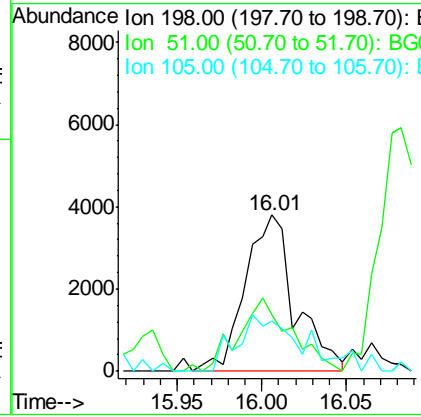
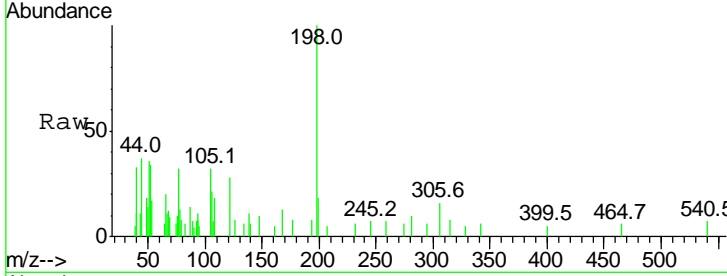
#64
 4,6-Dinitro-2-methylphenol
 Concen: 3.11 ng
 RT: 16.01 min Scan# 2241
 Delta R.T. 0.03 min
 Lab File: BG025368.D
 Acq: 21 Dec 2016 22:02

Instrument :
 BNA_G
ClientSampled :
 LOD-WATER-05-QT1-2017

Tgt Ion	Resp	Lower	Upper
198	100		
51	36.4	22.6	62.6
105	32.4	14.4	54.4

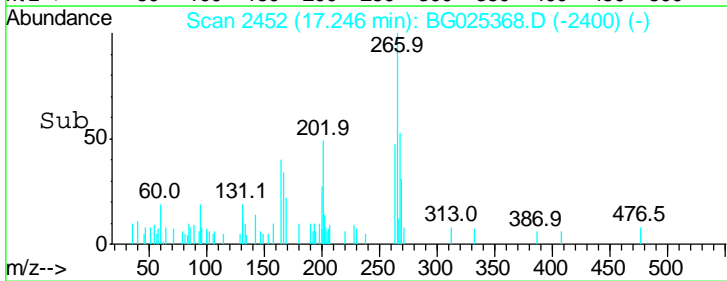
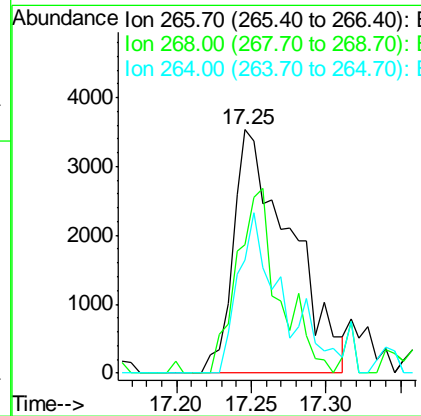
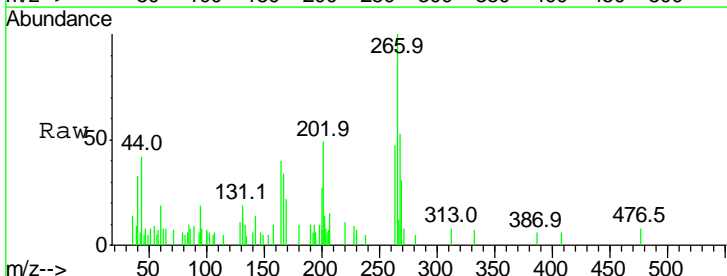
Manual Integrations
APPROVED

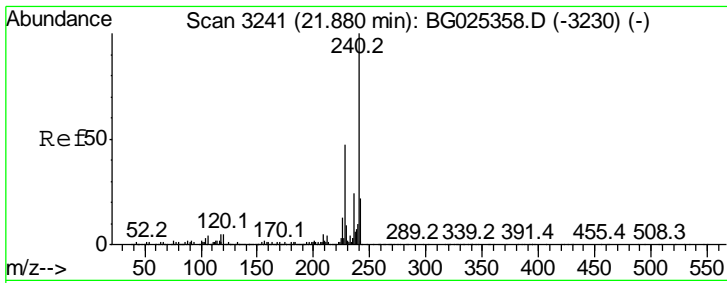
sohil
 12/22/2016 7:03:31 PM



#69
 Pentachlorophenol
 Concen: 3.54 ng
 RT: 17.25 min Scan# 2452
 Delta R.T. 0.01 min
 Lab File: BG025368.D
 Acq: 21 Dec 2016 22:02

Tgt Ion	Resp	Lower	Upper
266	100		
268	53.0	48.6	72.8
264	46.6	50.1	75.1#



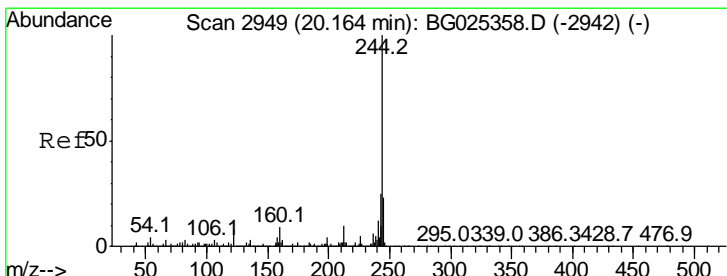
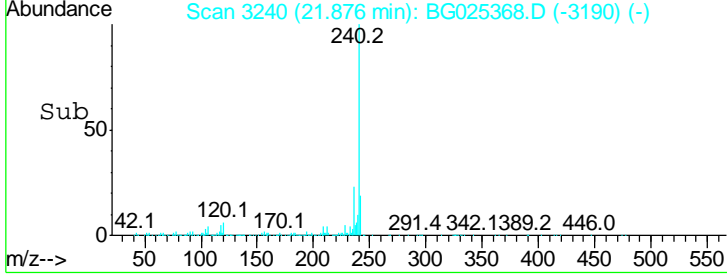
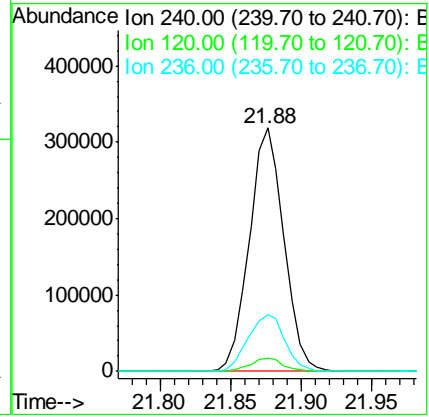
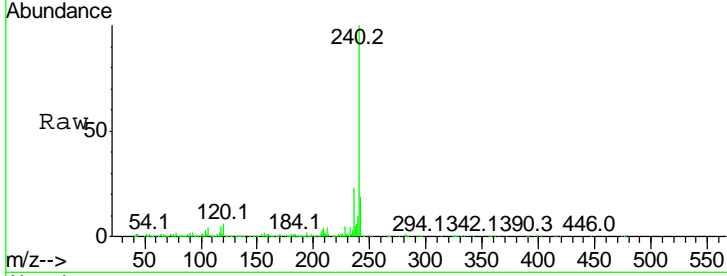


#75
 Chrysene-d12
 Concen: 20.00 ng
 RT: 21.88 min Scan# 3240
 Delta R.T. -0.00 min
 Lab File: BG025368.D
 Acq: 21 Dec 2016 22:02

Instrument :
 BNA_G
ClientSampled :
 LOD-WATER-05-QT1-2017

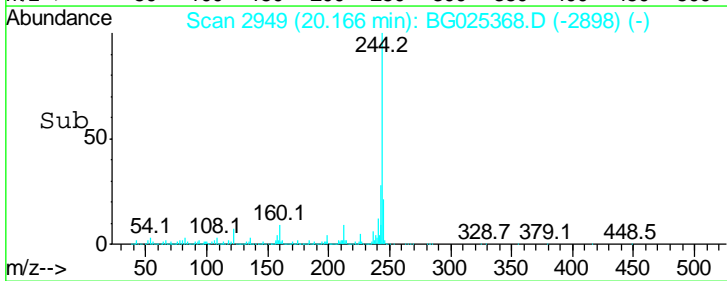
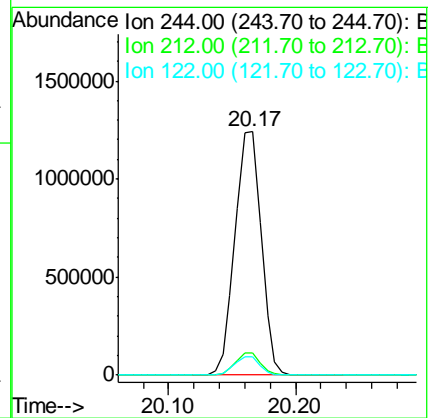
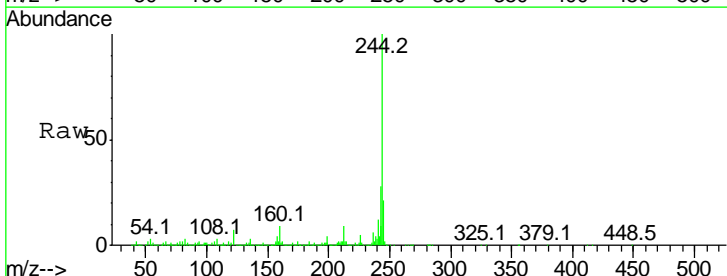
Tgt Ion	Ratio	Lower	Upper
240	100		
120	5.7	5.7	8.5
236	23.3	22.2	33.4

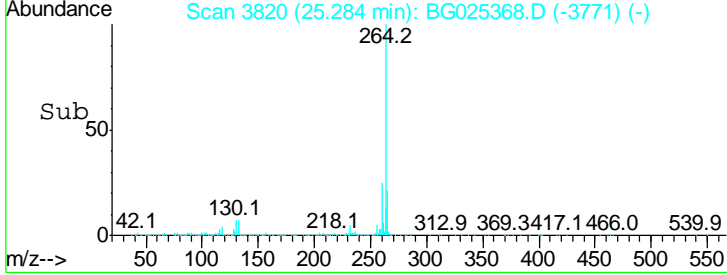
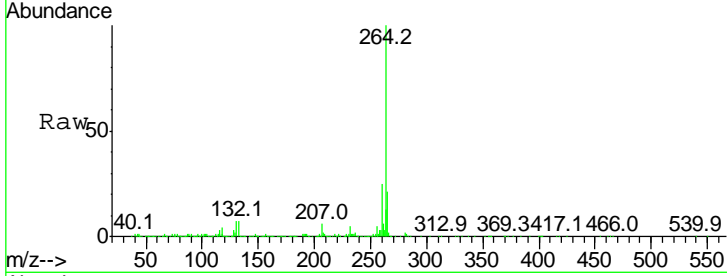
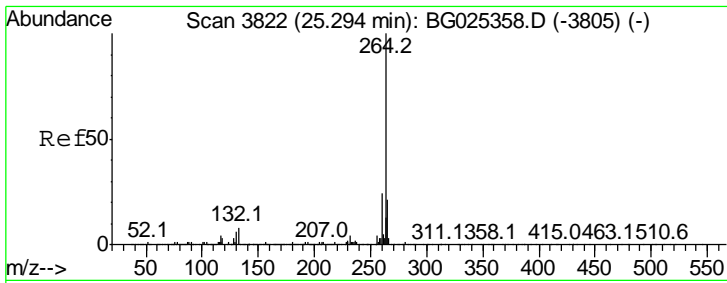
Manual Integrations
APPROVED
 sohil
 12/22/2016 7:03:31 PM



#78
 Terphenyl-d14
 Concen: 86.08 ng
 RT: 20.17 min Scan# 2949
 Delta R.T. 0.00 min
 Lab File: BG025368.D
 Acq: 21 Dec 2016 22:02

Tgt Ion	Ratio	Lower	Upper
244	100		
212	9.3	10.0	15.0#
122	7.3	8.6	12.8#





#86
 Perylene-d12
 Concen: 20.00 ng
 RT: 25.28 min Scan# 3820
 Delta R.T. -0.01 min
 Lab File: BG025368.D
 Acq: 21 Dec 2016 22:02

Tot Ion: 264 Resp: 581784

Ion	Ratio	Lower	Upper
264	100		
260	24.8	21.8	32.8
265	21.1	18.2	27.4

Instrument :
 BNA_G
Client Sampled :
 LOD-WATER-05-QT1-2017

Manual Integrations
APPROVED
 sohil
 12/22/2016 7:03:31 PM

