

Data Path : Z:\HPCHEM1\BNA G\DATA\BG122117\
 Data File : BG031684.D
 Acq On : 21 Dec 2017 21:51
 Operator : SJ/JU
 Sample : I6961-08
 Misc :
 ALS Vial : 11 Sample Multiplier: 1

Instrument :
 BNA_G
 ClientSampleId :
 EPE-108-1(75-77)

Integration Parameters: rteint.p
 Integrator: RTE
 Smoothing : ON Filtering: 5
 Sampling : 1 Min Area: 3 % of largest Peak
 Start Thrs: 0.2 Max Peaks: 100
 Stop Thrs : 0 Peak Location: TOP

If leading or trailing edge < 100 prefer < Baseline drop else tangent >
 Peak separation: 5

Method : Z:\HPCHEM1\BNA G\METHODS\8270-BG122117.M
 Title : ASP BNA STANDARDS FOR 5 POINT CALIBRATION

Signal : TIC

peak #	R.T. min	first scan	max scan	last scan	PK TY	peak height	corr. area	corr. % max.	% of total
1	3.446	22	27	39	rBV2	39191	78501	2.13%	0.433%
2	5.738	410	417	424	rBV	34752	58903	1.60%	0.325%
3	6.243	496	503	514	rBV	656435	1145682	31.04%	6.325%
4	7.923	780	789	802	rBV	656182	1293207	35.04%	7.139%
5	8.340	851	860	871	rBV	703375	1292743	35.03%	7.136%
6	8.828	936	943	952	rVB	146841	256500	6.95%	1.416%
7	9.169	991	1001	1010	rBV	532060	1000077	27.10%	5.521%
8	10.027	1138	1147	1156	rBV	364214	683052	18.51%	3.771%
9	11.719	1426	1435	1446	rBV	200388	377375	10.23%	2.083%
10	14.093	1831	1839	1848	rBV	1394516	2221790	60.20%	12.265%
11	14.886	1967	1974	1982	rBV	89726	133249	3.61%	0.736%
12	15.462	2065	2072	2080	rVB2	365635	599327	16.24%	3.309%
13	16.795	2288	2299	2306	rBV	58911	89216	2.42%	0.493%
14	16.936	2316	2323	2334	rBV	1255225	2008257	54.41%	11.086%
15	18.200	2531	2538	2548	rBV2	533669	847082	22.95%	4.676%
16	19.022	2672	2678	2685	rBV	63614	94453	2.56%	0.521%
17	20.256	2883	2888	2895	rBV4	37552	59502	1.61%	0.328%
18	20.732	2963	2969	2978	rVB	2749866	3690666	100.00%	20.374%
19	22.113	3200	3204	3214	rVB6	33874	62025	1.68%	0.342%
20	22.559	3272	3280	3289	rVB	550074	1056082	28.61%	5.830%
21	26.343	3912	3924	3936	rBV2	327003	1066962	28.91%	5.890%

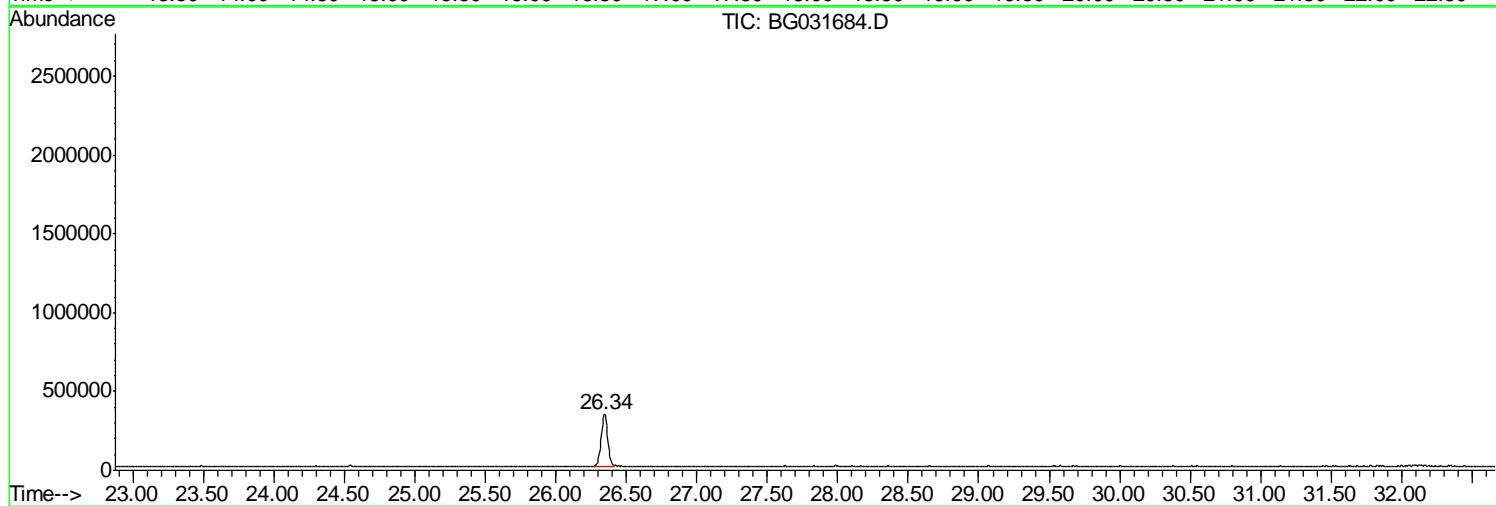
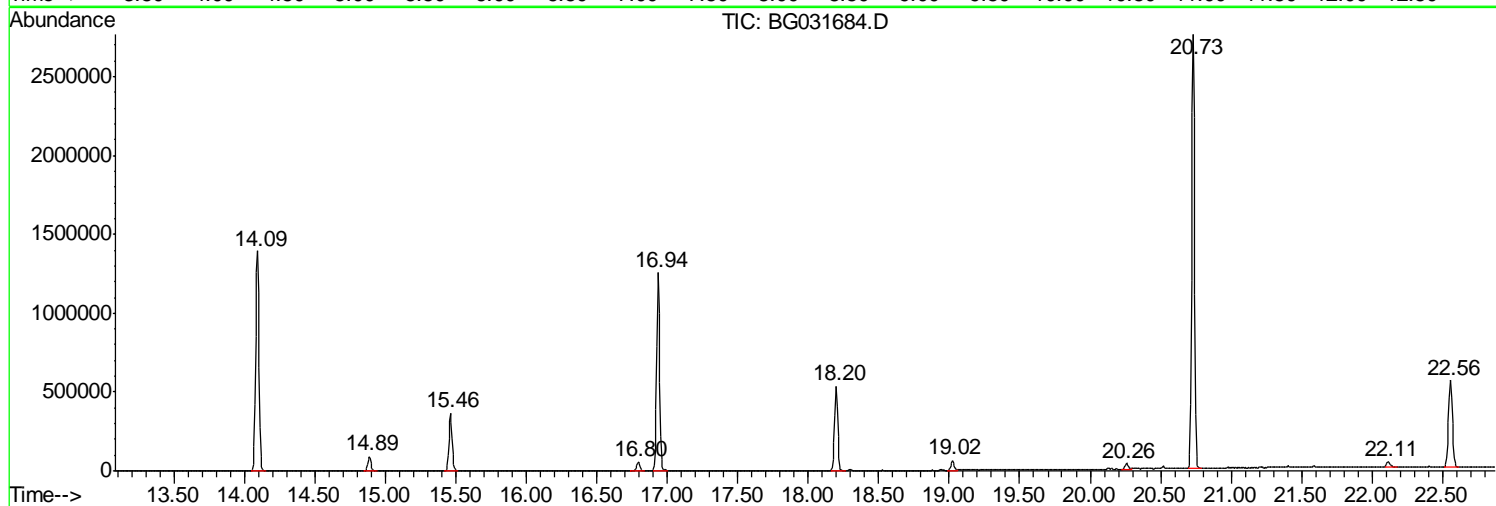
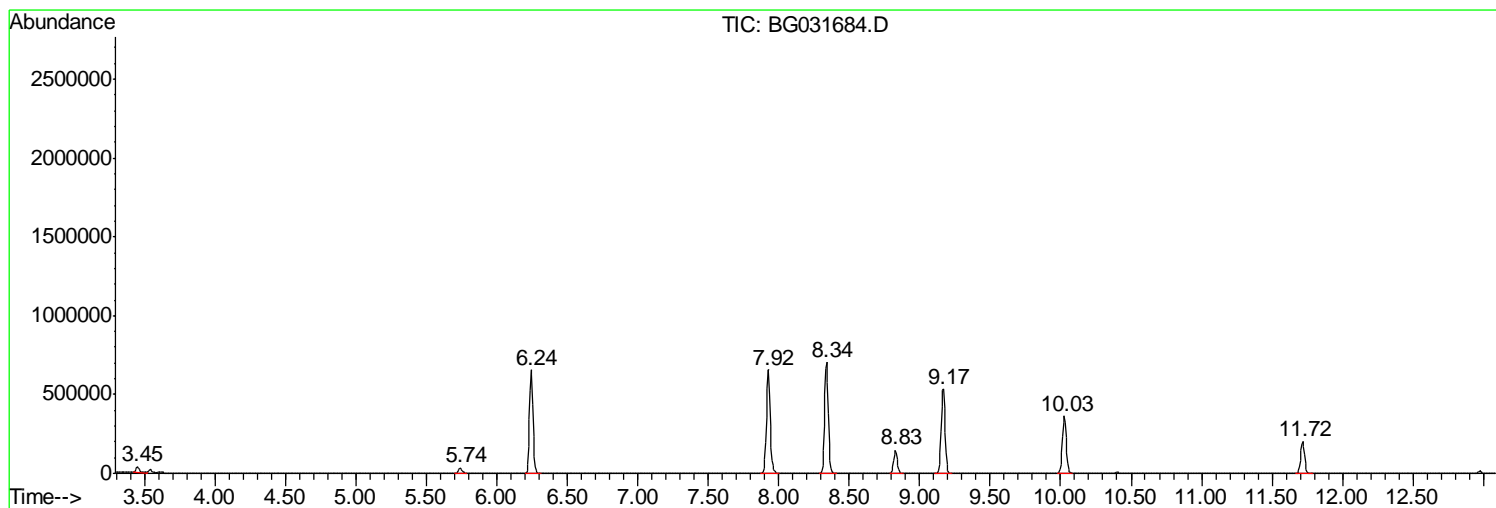
Sum of corrected areas: 18114651

Data Path : Z:\HPCHEM1\BNA G\DATA\BG122117\
Data File : BG031684.D
Acq On : 21 Dec 2017 21:51
Operator : SJ/JU
Sample : I6961-08
Misc :
ALS Vial : 11 Sample Multiplier: 1

Instrument :
BNA_G
ClientSampleId :
EPE-108-1(75-77)

Quant Method : Z:\HPCHEM1\BNA G\METHODS\8270-BG122117.M
Quant Title : ASP BNA STANDARDS FOR 5 POINT CALIBRATION

TIC Library : C:\Database\NIST11.L
TIC Integration Parameters: LSCINT.P



Data Path : Z:\HPCHEM1\BNA G\DATA\BG122117\
 Data File : BG031684.D
 Acq On : 21 Dec 2017 21:51
 Operator : SJ/JU
 Sample : I6961-08
 Misc :
 ALS Vial : 11 Sample Multiplier: 1

Instrument :
 BNA_G
 ClientSampled :
 EPE-108-1(75-77)

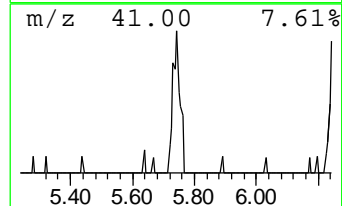
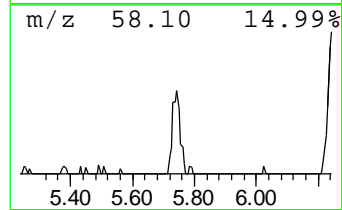
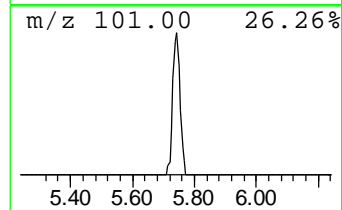
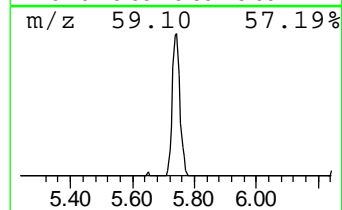
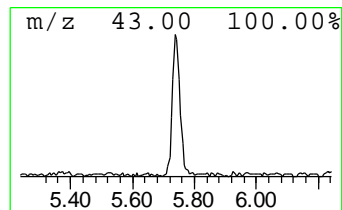
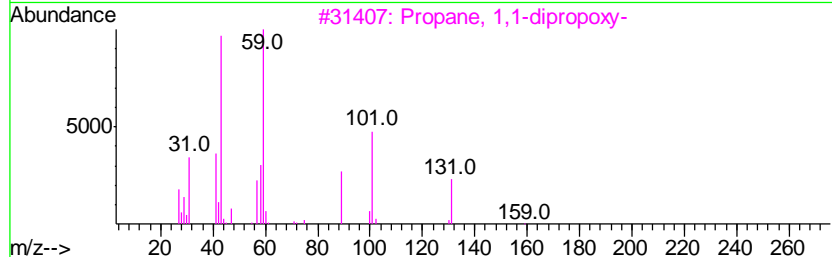
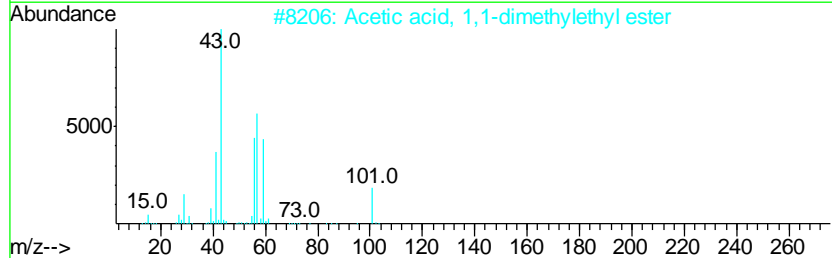
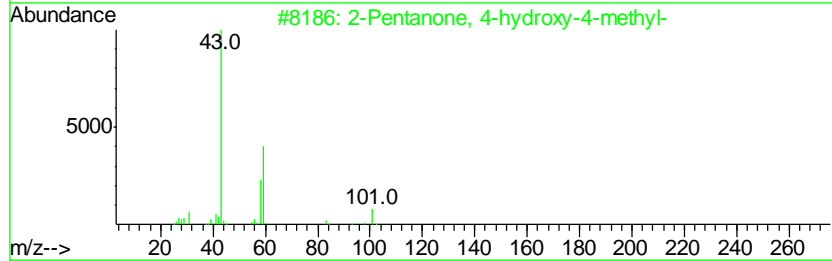
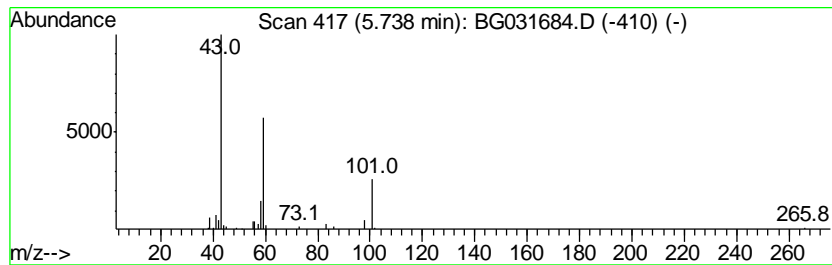
Quant Method : Z:\HPCHEM1\BNA G\METHODS\8270-BG122117.M
 Quant Title : ASP BNA STANDARDS FOR 5 POINT CALIBRATION

TIC Library : C:\Database\NIST11.L
 TIC Integration Parameters: LSCINT.P

 Peak Number 2 2-Pentanone, 4-hydroxy-4-me... Concentration Rank 4

R.T.	EstConc	Area	Relative to ISTD	R.T.
5.74	4.59 ng	58903	1,4-Dichlorobenzene-d4	8.83

Hit#	of	Tentative ID	MW	MolForm	CAS#	Qual
1	5	2-Pentanone, 4-hydroxy-4-methyl-	116	C6H12O2	000123-42-2	50
2		Acetic acid, 1,1-dimethylethyl e...	116	C6H12O2	000540-88-5	38
3		Propane, 1,1-dipropoxy-	160	C9H20O2	004744-11-0	33
4		Dimethadione	129	C5H7NO3	000695-53-4	33
5		1,3-Dioxolane-2-methanol, 2,4-di...	132	C6H12O3	053951-43-2	25



Data Path : Z:\HPCHEM1\BNA G\DATA\BG122117\
 Data File : BG031684.D
 Acq On : 21 Dec 2017 21:51
 Operator : SJ/JU
 Sample : I6961-08
 Misc :
 ALS Vial : 11 Sample Multiplier: 1

Instrument :
 BNA_G
 ClientSampled :
 EPE-108-1(75-77)

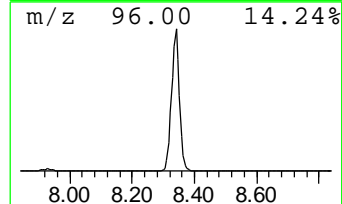
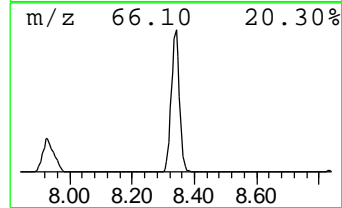
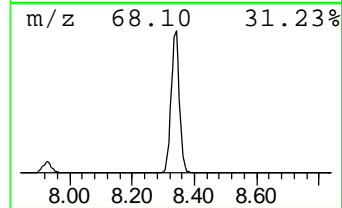
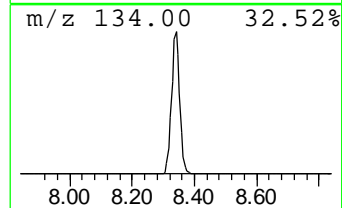
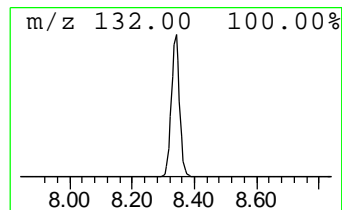
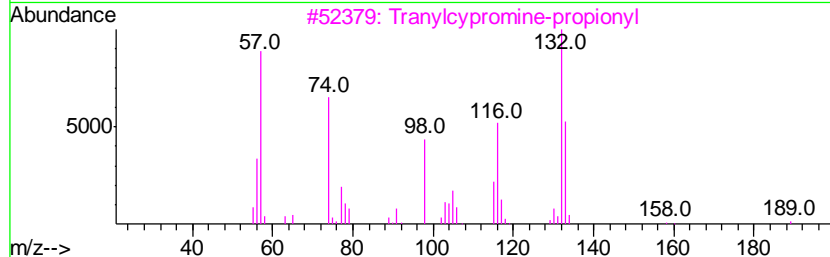
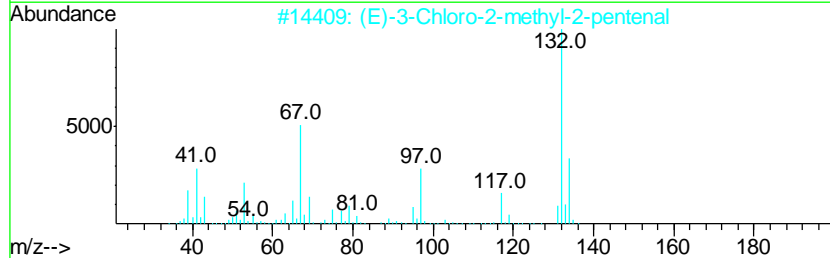
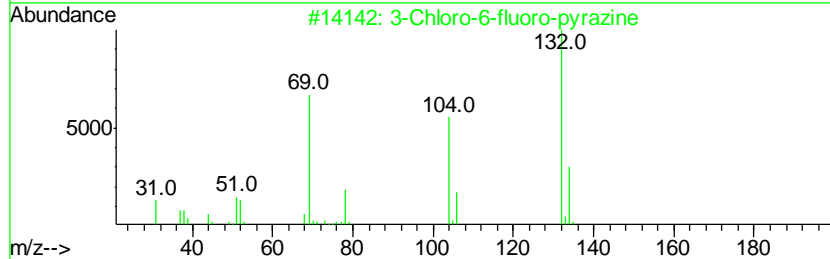
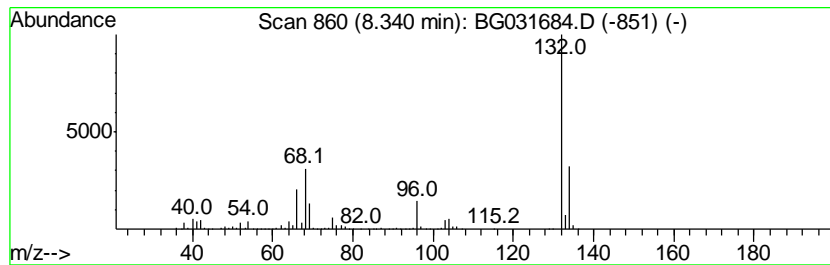
Quant Method : Z:\HPCHEM1\BNA G\METHODS\8270-BG122117.M
 Quant Title : ASP BNA STANDARDS FOR 5 POINT CALIBRATION

TIC Library : C:\Database\NIST11.L
 TIC Integration Parameters: LSCINT.P

 Peak Number 3 unknown8.34 Concentration Rank 1

R.T.	EstConc	Area	Relative to ISTD	R.T.
8.34	100.80 ng	1292740	1,4-Dichlorobenzene-d4	8.83

Hit#	of	Tentative ID	MW	MolForm	CAS#	Qual
1	5	3-Chloro-6-fluoro-pyrazine	132	C4H2ClFN2	1000146-10-7	38
2		(E)-3-Chloro-2-methyl-2-pentenal	132	C6H9ClO	031357-76-3	12
3		Tranylcypromine-propionyl	189	C12H15NO	1000123-86-3	12
4		4-Chloro-2-fluoro-pyrimidine	132	C4H2ClFN2	051422-00-5	9
5		1H-Benzimidazole, 2-methyl-	132	C8H8N2	000615-15-6	9



Data Path : Z:\HPCHEM1\BNA G\DATA\BG122117\
 Data File : BG031684.D
 Acq On : 21 Dec 2017 21:51
 Operator : SJ/JU
 Sample : I6961-08
 Misc :
 ALS Vial : 11 Sample Multiplier: 1

Instrument :
 BNA_G
 ClientSampleId :
 EPE-108-1(75-77)

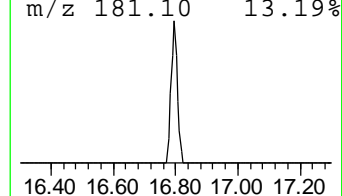
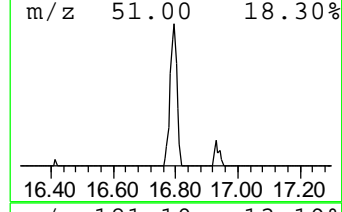
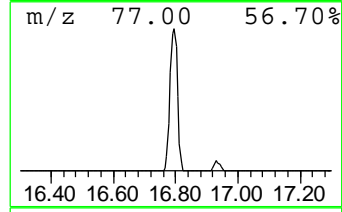
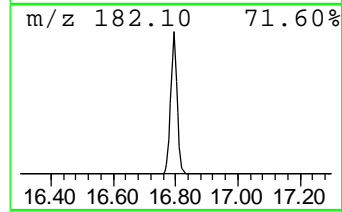
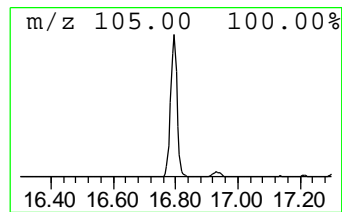
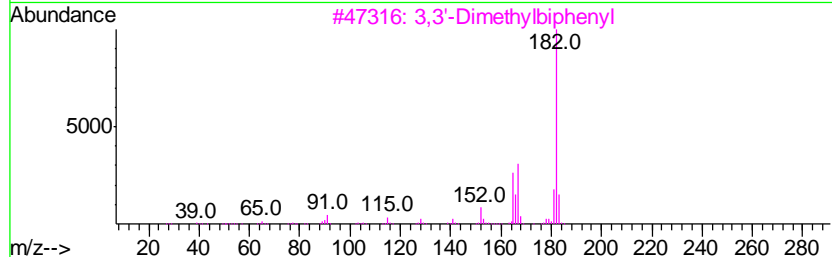
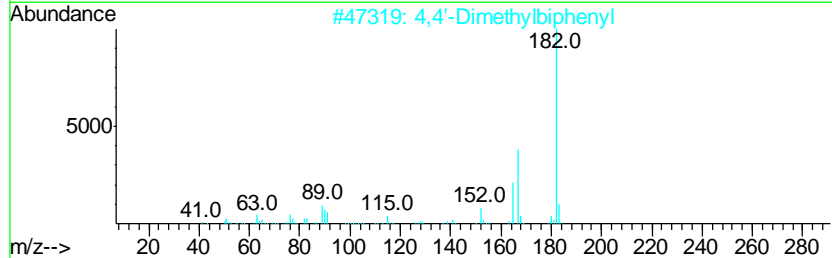
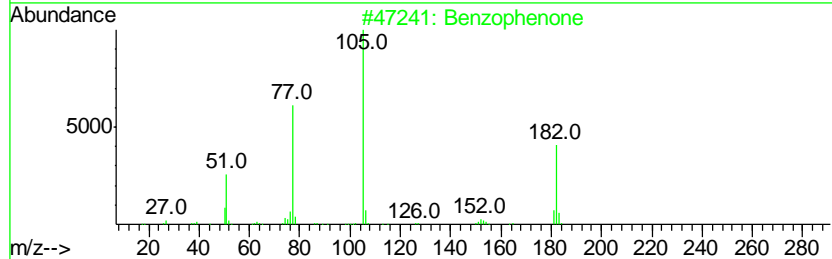
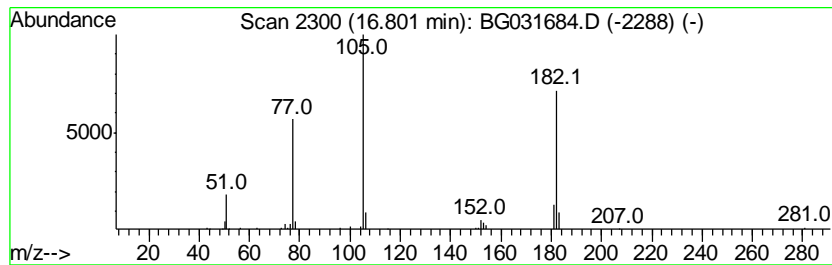
Quant Method : Z:\HPCHEM1\BNA G\METHODS\8270-BG122117.M
 Quant Title : ASP BNA STANDARDS FOR 5 POINT CALIBRATION

TIC Library : C:\Database\NIST11.L
 TIC Integration Parameters: LSCINT.P

 Peak Number 5 Benzophenone Concentration Rank 5

R.T.	EstConc	Area	Relative to ISTD	R.T.
16.80	2.98 ng	89216	Acenaphthene-d10	15.46

Hit#	of	Tentative ID	MW	MolForm	CAS#	Qual
1	5	Benzophenone	182	C13H10O	000119-61-9	95
2		4,4'-Dimethylbiphenyl	182	C14H14	000613-33-2	43
3		3,3'-Dimethylbiphenyl	182	C14H14	000612-75-9	43
4		7-Phosphabicyclo[2.2.1]hept-2-en...	182	C11H19P	1000151-83-5	43
5		2,4,6-Trimethoxytoluene	182	C10H14O3	014107-97-2	43



Data Path : Z:\HPCHEM1\BNA G\DATA\BG122117\
 Data File : BG031684.D
 Acq On : 21 Dec 2017 21:51
 Operator : SJ/JU
 Sample : I6961-08
 Misc :
 ALS Vial : 11 Sample Multiplier: 1

Instrument :
 BNA_G
 ClientSampleID :
 EPE-108-1(75-77)

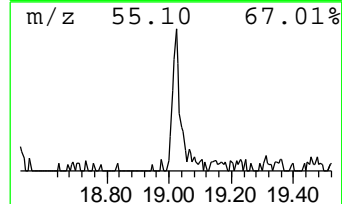
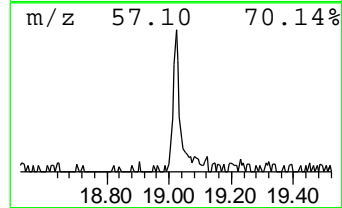
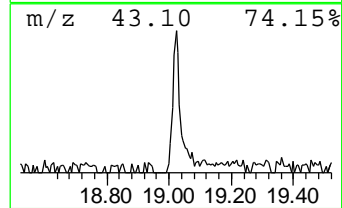
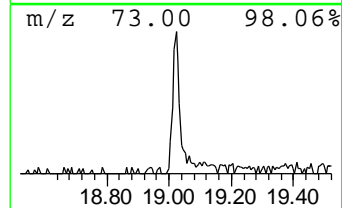
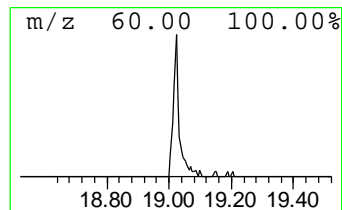
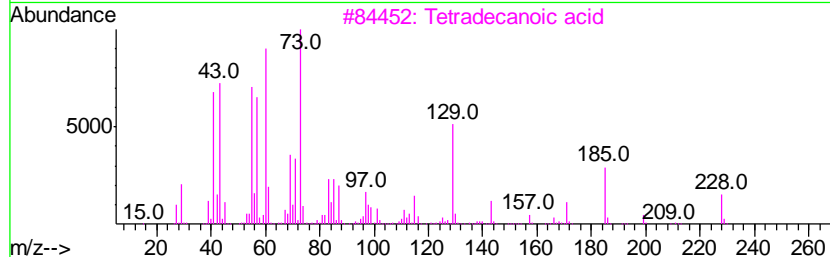
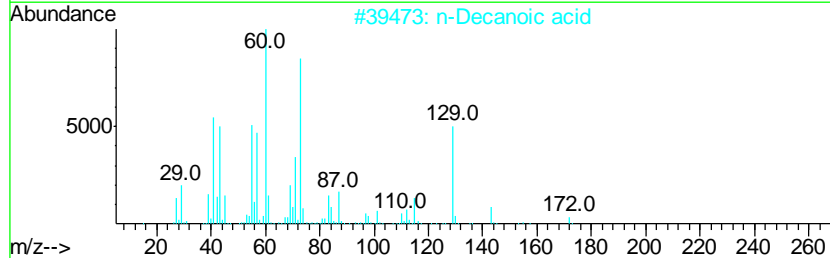
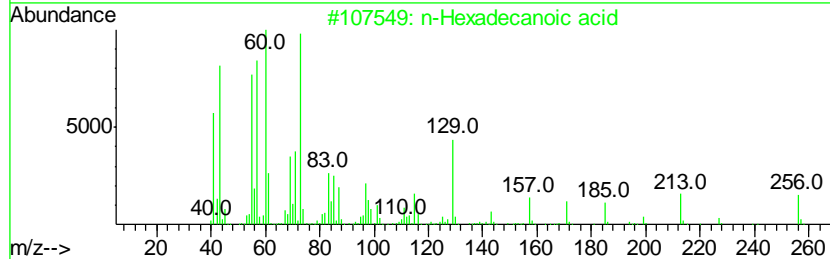
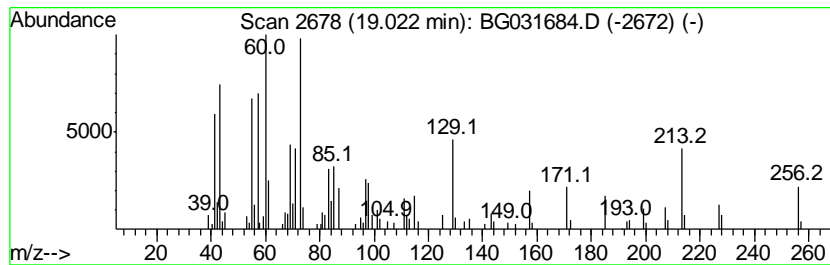
Quant Method : Z:\HPCHEM1\BNA G\METHODS\8270-BG122117.M
 Quant Title : ASP BNA STANDARDS FOR 5 POINT CALIBRATION

TIC Library : C:\Database\NIST11.L
 TIC Integration Parameters: LSCINT.P

 Peak Number 6 n-Hexadecanoic acid Concentration Rank 6

R.T.	EstConc	Area	Relative to ISTD	R.T.
19.02	2.23 ng	94453	Phenanthrene-d10	18.20

Hit#	of	Tentative ID	MW	MolForm	CAS#	Qual
1	5	n-Hexadecanoic acid	256	C16H32O2	000057-10-3	98
2		n-Decanoic acid	172	C10H20O2	000334-48-5	89
3		Tetradecanoic acid	228	C14H28O2	000544-63-8	78
4		Pentadecanoic acid	242	C15H30O2	001002-84-2	58
5		Tridecanoic acid	214	C13H26O2	000638-53-9	55



Data Path : Z:\HPCHEM1\BNA_G\DATA\BG122117\
Data File : BG031684.D
Acq On : 21 Dec 2017 21:51
Operator : SJ/JU
Sample : I6961-08
Misc :
ALS Vial : 11 Sample Multiplier: 1

Instrument :
BNA_G
ClientSampleId :
EPE-108-1(75-77)

Quant Method : Z:\HPCHEM1\BNA_G\METHODS\8270-BG122117.M
Quant Title : ASP BNA STANDARDS FOR 5 POINT CALIBRATION

TIC Library : C:\Database\NIST11.L
TIC Integration Parameters: LSCINT.P

TIC Top Hit name	RT	EstConc	Units	Response	--Internal Standard--			
					#	RT	Resp	Conc
2-Pentanone, 4-hy...	5.74	4.6	ng	58903	1	8.83	256500	20.0
unknown8.34	8.34	100.8	ng	1292740	1	8.83	256500	20.0
Benzophenone	16.80	3.0	ng	89216	3	15.46	599327	20.0
n-Hexadecanoic acid	19.02	2.2	ng	94453	4	18.20	847082	20.0