

Data Path : Z:\HPCHEM1\BNA\_G\DATA\BG122215\  
 Data File : BG020426.D  
 Acq On : 23 Dec 2015 3:30  
 Operator : UM/SJ  
 Sample : G4849-07DL 5X  
 Misc :  
 ALS Vial : 18 Sample Multiplier: 1

Instrument :  
 BNA\_G  
 ClientSampleID :  
 D9N71DL

Quant Time: Dec 23 07:42:47 2015  
 Quant Method : Z:\HPCHEM1\BNA\_G\METHODS\SOM02.2-EPA-BG121415.M  
 Quant Title : SVOA CALIBRATION  
 QLast Update : Wed Dec 23 07:35:59 2015  
 Response via : Initial Calibration

Internal Standards	R.T.	QIon	Response	Conc	Units	Dev(Min)
1) 1,4-Dichlorobenzene-d4	8.08	152	16205	20.00	ng/ul	0.00
18) Naphthalene-d8	10.90	136	73013	20.00	ng/ul	0.00
36) Acenaphthene-d10	14.72	164	52804	20.00	ng/ul	0.00
62) Phenanthrene-d10	17.46	188	126004	20.00	ng/ul	0.00
78) Chrysene-d12	21.74	240	155659	20.00	ng/ul	0.00
86) Perylene-d12	25.01	264	154466	20.00	ng/ul	0.00

## System Monitoring Compounds

3) 1,4-Dioxane-d8	3.45	96	181	0.62	ng/uL	0.00
5) Phenol-d5	7.24	99	8766	6.13	ng/ul	0.00
7) Bis-(2-Chloroethyl)ether-d	7.40	67	5529	6.48	ng/ul	0.00
9) 2-Chlorophenol-d4	7.61	132	7425	7.14	ng/ul	0.00
13) 4-Methylphenol-d8	8.79	113	7965	6.52	ng/ul	0.00
19) Nitrobenzene-d5	9.25	128	4028	7.08	ng/ul	0.00
22) 2-Nitrophenol-d4	9.98	143	4704	7.43	ng/ul	0.00
26) 2,4-Dichlorophenol-d3	10.52	165	9116	7.11	ng/ul	0.00
29) 4-Chloroaniline-d4	11.03	131	11678	8.10	ng/ul	0.00
44) Dimethylphthalate-d6	14.11	166	31486	7.37	ng/ul	0.00
47) Acenaphthylene-d8	14.41	160	36218	7.29	ng/ul	0.00
52) 4-Nitrophenol-d4	14.92	143	3168	4.14	ng/ul	0.00
58) Fluorene-d10	15.70	176	28191	7.28	ng/ul	0.00
63) 4,6-Dinitro-2-methylphenol	15.83	200	2862	3.83	ng/ul	0.00
71) Anthracene-d10	17.56	188	45339	7.81	ng/ul	0.00
79) Pyrene-d10	19.84	212	52386	7.22	ng/ul	0.00
90) Benzo(a)pyrene-d12	24.78	264	58601	7.61	ng/ul	0.00

## Target Compounds

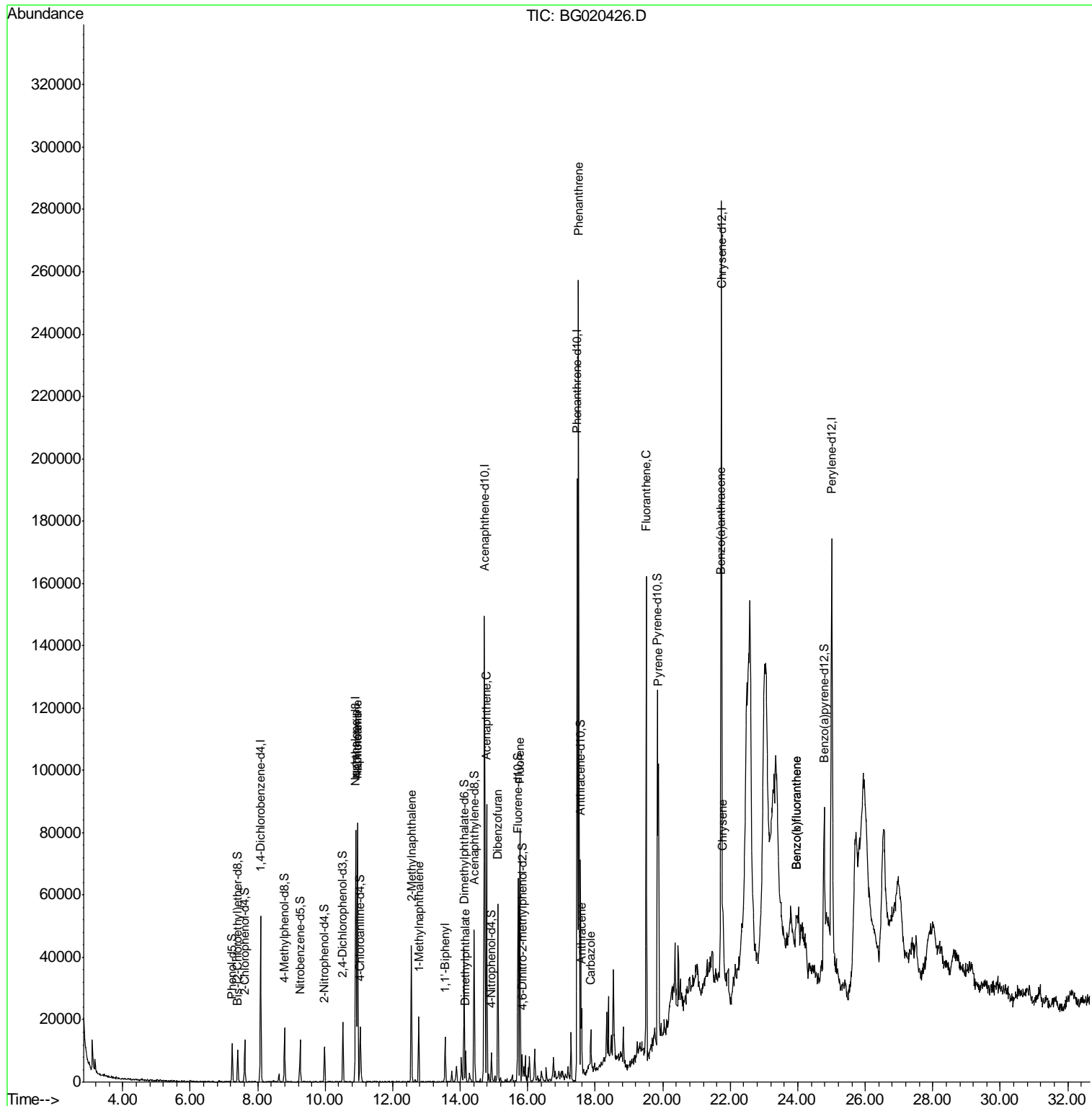
Target Compounds	R.T.	QIon	Response	Conc	Units	Qvalue
28) Naphthalene	10.95	128	72269	18.95	ng/ul	99
30) 4-Chloroaniline	10.95	127	10024	6.81	ng/ul#	17
34) 2-Methylnaphthalene	12.55	142	22482	7.72	ng/ul	99
35) 1-Methylnaphthalene	12.77	142	10617	3.79	ng/ul#	99
41) 1,1'-Biphenyl	13.55	154	8476	2.13	ng/ul	93
45) Dimethylphthalate	14.16	163	7595	1.74	ng/ul#	97
50) Acenaphthene	14.78	153	39191	11.03	ng/ul	94
54) Dibenzofuran	15.11	168	40860	7.73	ng/ul	100
59) Fluorene	15.76	166	37899	8.93	ng/ul	99
70) Phenanthrene	17.51	178	177204	25.71	ng/ul	99
72) Anthracene	17.60	178	16617	2.38	ng/ul	100
75) Carbazole	17.87	167	10222	1.74	ng/ul#	96
77) Fluoranthene	19.51	202	103745	12.88	ng/ul	97
80) Pyrene	19.87	202	68930	7.32	ng/ul	97
83) Benzo(a)anthracene	21.72	228	16583	1.83	ng/ul	95
85) Chrysene	21.79	228	12214	1.43	ng/ul	98
88) Benzo(b)fluoranthene	23.97	252	9631	1.04	ng/ul#	92
89) Benzo(k)fluoranthene	23.97	252	9631	1.08	ng/ul#	94

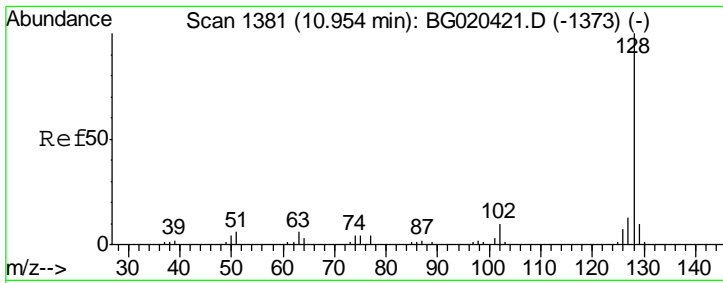
(#) = qualifier out of range (m) = manual integration (+) = signals summed

Data Path : Z:\HPCHEM1\BNA\_G\DATA\BG122215\  
 Data File : BG020426.D  
 Acq On : 23 Dec 2015 3:30  
 Operator : UM/SJ  
 Sample : G4849-07DL 5X  
 Misc :  
 ALS Vial : 18 Sample Multiplier: 1

Instrument :  
 BNA\_G  
 ClientSampled :  
 D9N71DL

Quant Time: Dec 23 07:42:47 2015  
 Quant Method : Z:\HPCHEM1\BNA\_G\METHODS\SOM02.2-EPA-BG121415.M  
 Quant Title : SVOA CALIBRATION  
 QLast Update : Wed Dec 23 07:35:59 2015  
 Response via : Initial Calibration

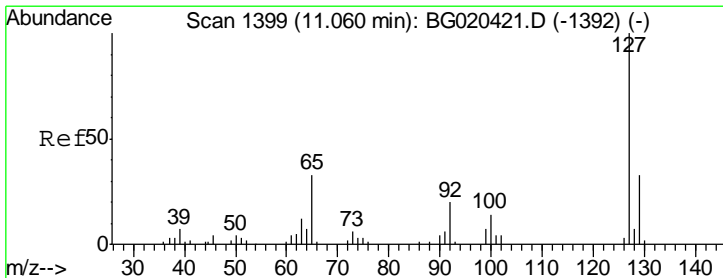
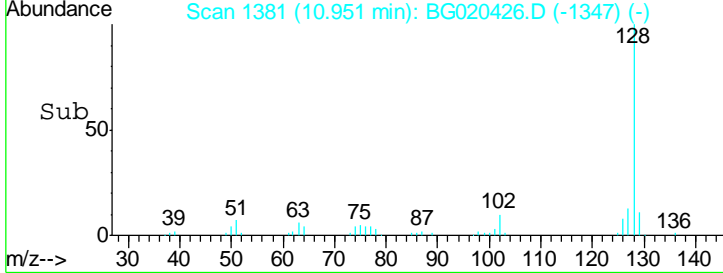
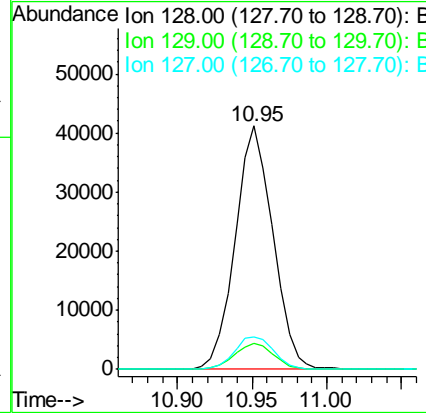
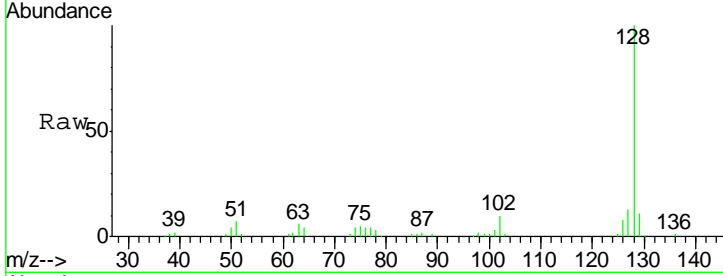




#28  
 Naphthalene  
 Concen: 18.95 ng/ul  
 RT: 10.95 min Scan# 1381  
 Delta R.T. -0.00 min  
 Lab File: BG020426.D  
 Acq: 23 Dec 2015 3:30

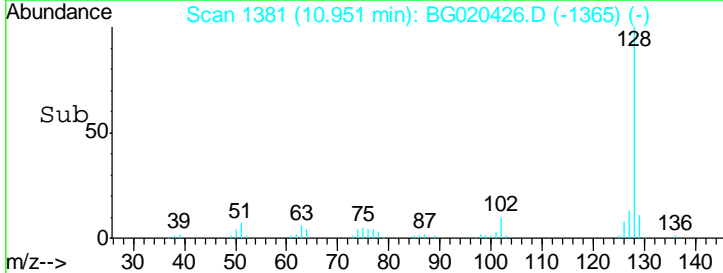
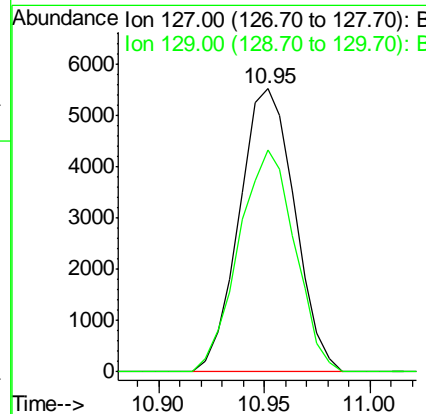
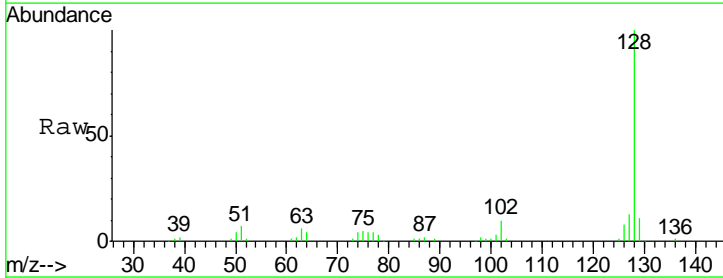
Instrument :  
 BNA\_G  
 ClientSampled :  
 D9N71DL

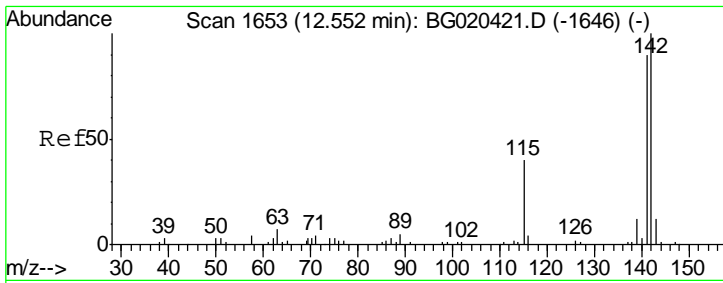
Tgt Ion	Resp	Lower	Upper
128	100		
129	10.5	8.6	12.8
127	13.4	10.1	15.1



#30  
 4-Chloroaniline  
 Concen: 6.81 ng/ul  
 RT: 10.95 min Scan# 1381  
 Delta R.T. -0.11 min  
 Lab File: BG020426.D  
 Acq: 23 Dec 2015 3:30

Tgt Ion	Resp	Lower	Upper
127	100		
129	78.6	25.7	38.5#

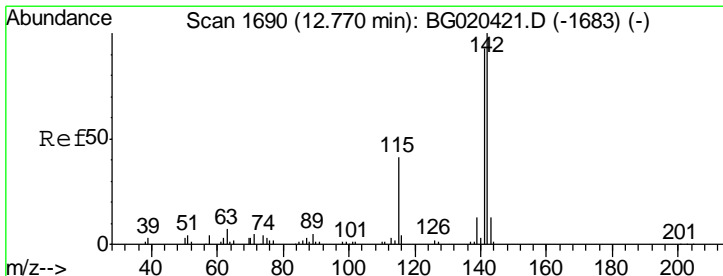
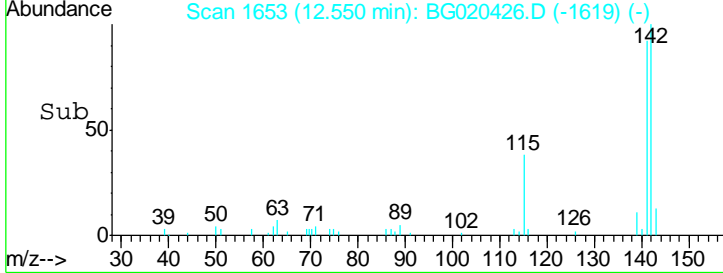
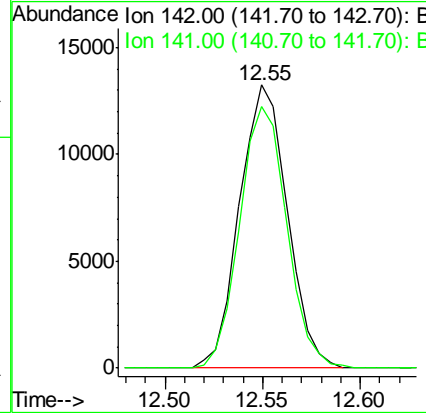
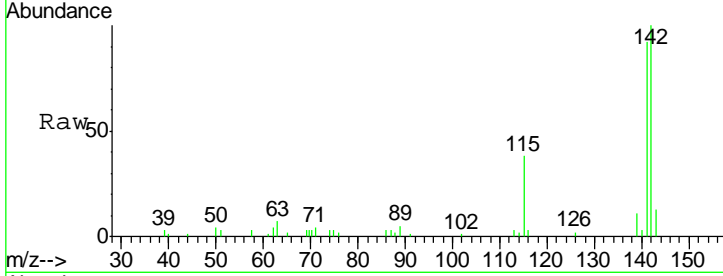




#34  
 2-Methylnaphthalene  
 Concen: 7.72 ng/ul  
 RT: 12.55 min Scan# 1653  
 Delta R.T. -0.00 min  
 Lab File: BG020426.D  
 Acq: 23 Dec 2015 3:30

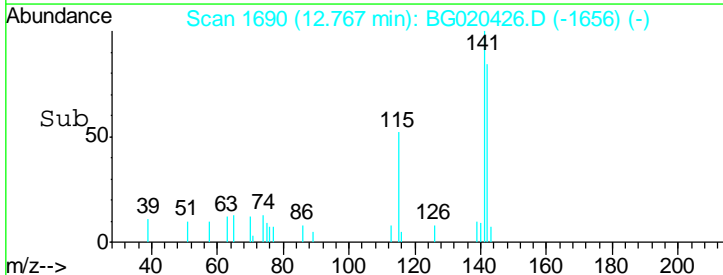
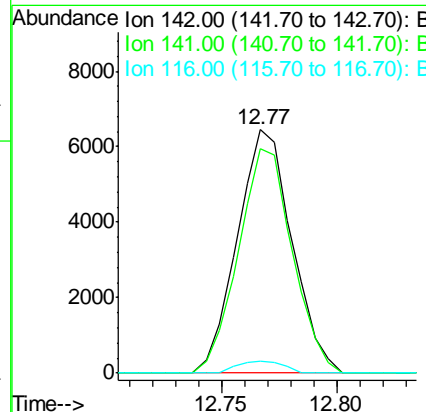
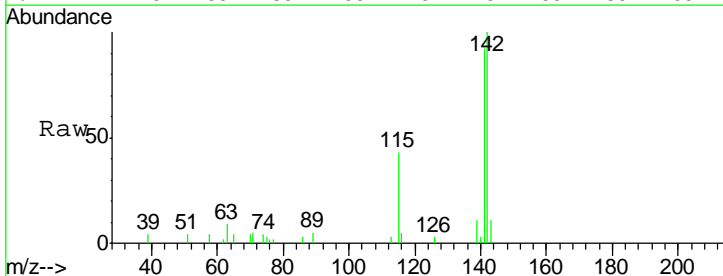
Instrument :  
 BNA\_G  
 ClientSampled :  
 D9N71DL

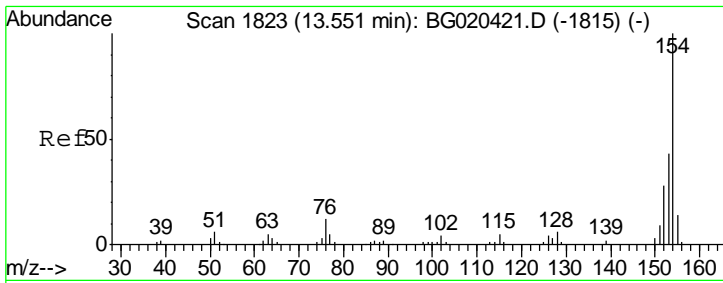
Tgt Ion:142 Resp: 22482  
 Ion Ratio Lower Upper  
 142 100  
 141 92.4 74.9 112.3



#35  
 1-Methylnaphthalene  
 Concen: 3.79 ng/ul  
 RT: 12.77 min Scan# 1690  
 Delta R.T. -0.00 min  
 Lab File: BG020426.D  
 Acq: 23 Dec 2015 3:30

Tgt Ion:142 Resp: 10617  
 Ion Ratio Lower Upper  
 142 100  
 141 92.1 73.0 109.6  
 116 4.8 3.0 4.6#

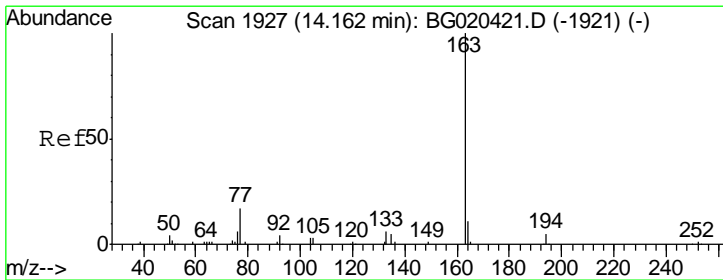
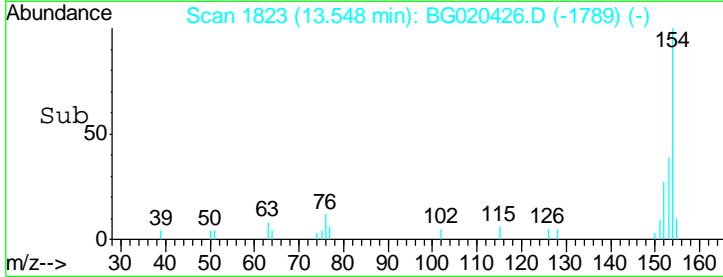
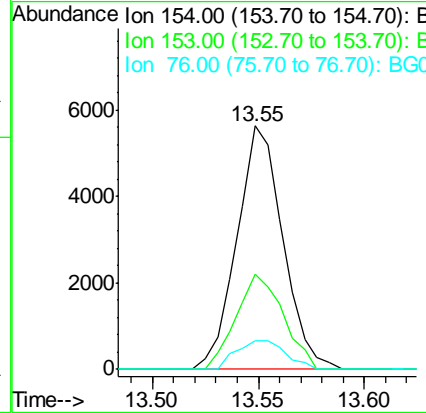
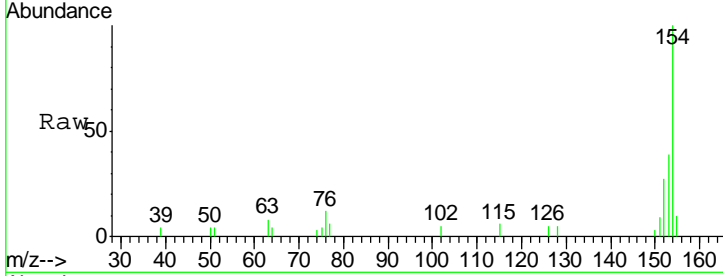




#41  
 1,1'-Biphenyl  
 Concen: 2.13 ng/ul  
 RT: 13.55 min Scan# 1823  
 Delta R.T. -0.00 min  
 Lab File: BG020426.D  
 Acq: 23 Dec 2015 3:30

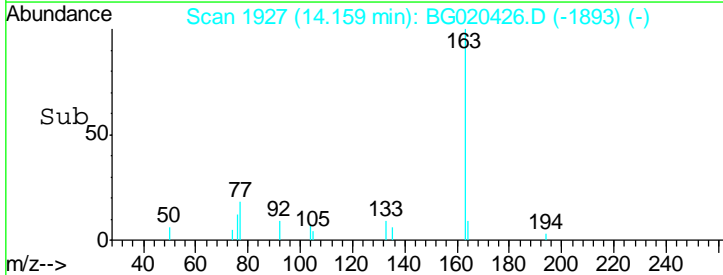
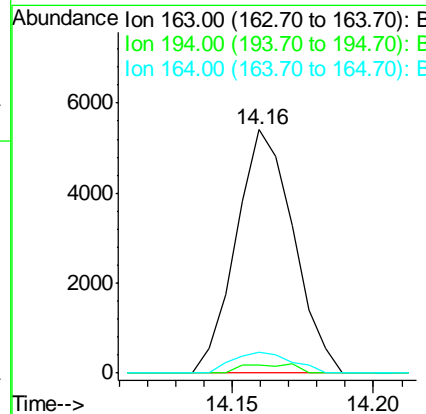
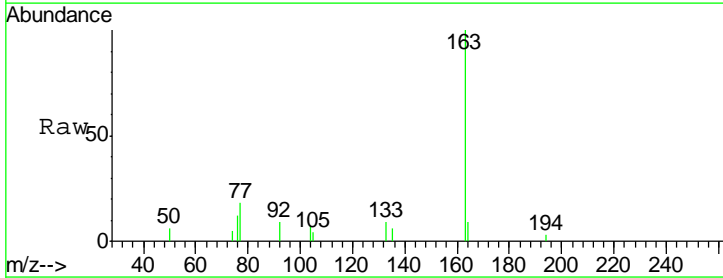
Instrument :  
 BNA\_G  
 ClientSampleID :  
 D9N71DL

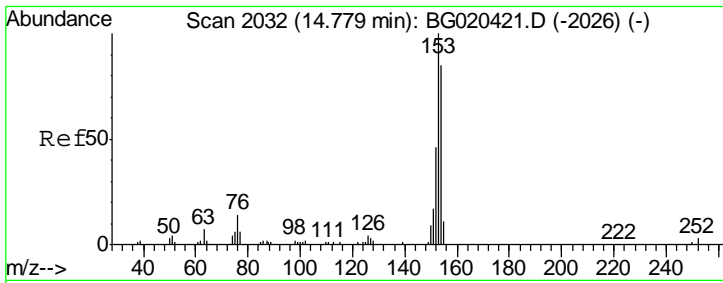
Tgt Ion	Resp	Lower	Upper
154	100		
153	38.9	35.5	53.3
76	11.9	10.4	15.6



#45  
 Dimethylphthalate  
 Concen: 1.74 ng/ul  
 RT: 14.16 min Scan# 1927  
 Delta R.T. -0.00 min  
 Lab File: BG020426.D  
 Acq: 23 Dec 2015 3:30

Tgt Ion	Resp	Lower	Upper
163	100		
194	3.3	3.5	5.3#
164	8.6	7.7	11.5

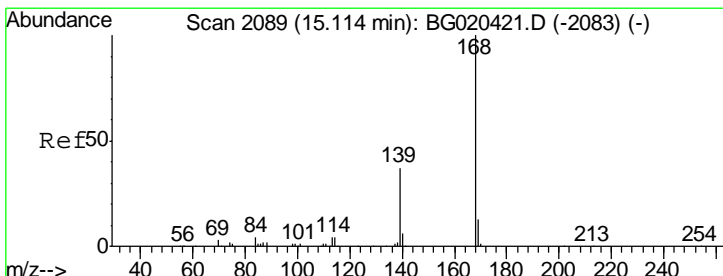
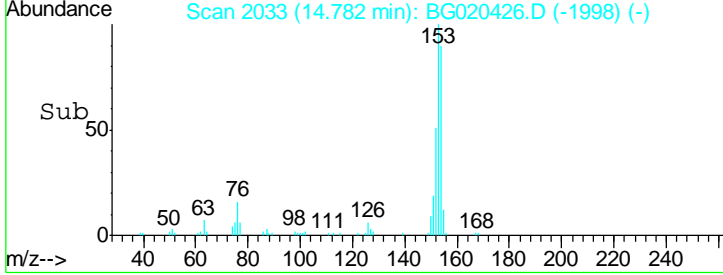
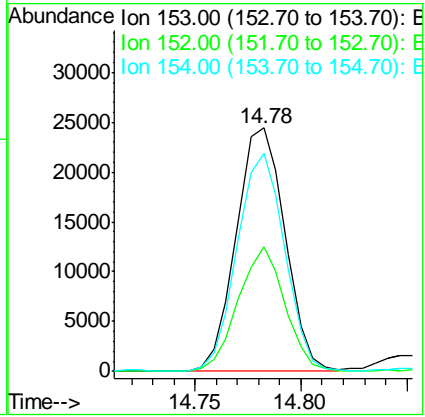
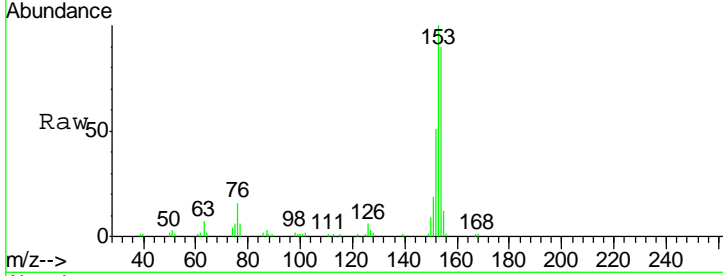




#50  
 Acenaphthene  
 Concen: 11.03 ng/ul  
 RT: 14.78 min Scan# 2033  
 Delta R.T. 0.00 min  
 Lab File: BG020426.D  
 Acq: 23 Dec 2015 3:30

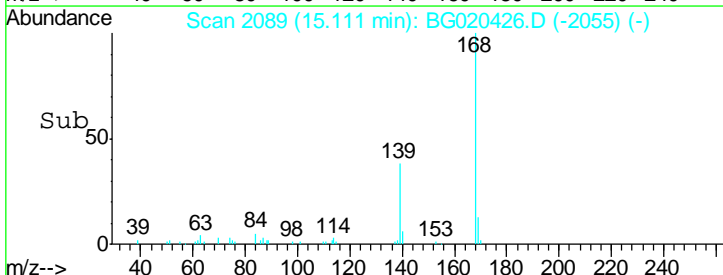
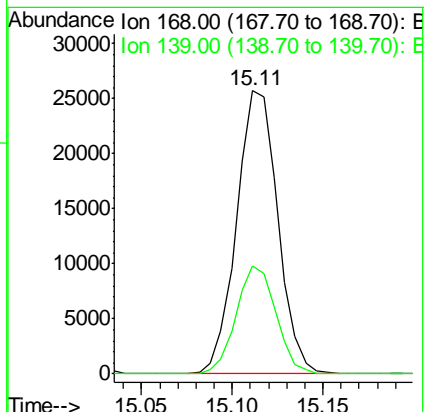
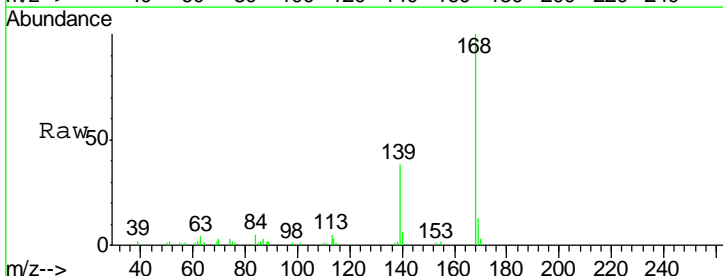
Instrument :  
 BNA\_G  
 ClientSampled :  
 D9N71DL

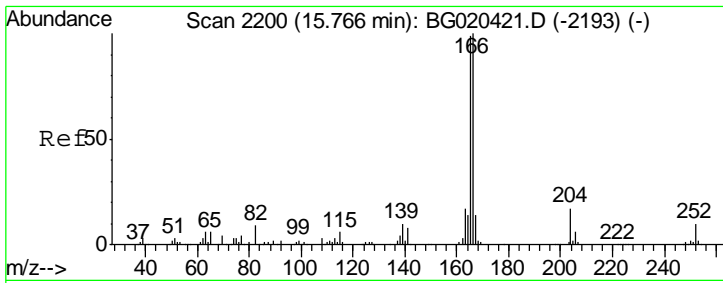
Tgt Ion	Resp	Lower	Upper
153	39191		
152	51.3	37.6	56.4
154	89.6	67.9	101.9



#54  
 Dibenzofuran  
 Concen: 7.73 ng/ul  
 RT: 15.11 min Scan# 2089  
 Delta R.T. -0.00 min  
 Lab File: BG020426.D  
 Acq: 23 Dec 2015 3:30

Tgt Ion	Resp	Lower	Upper
168	40860		
139	38.0	30.5	45.7

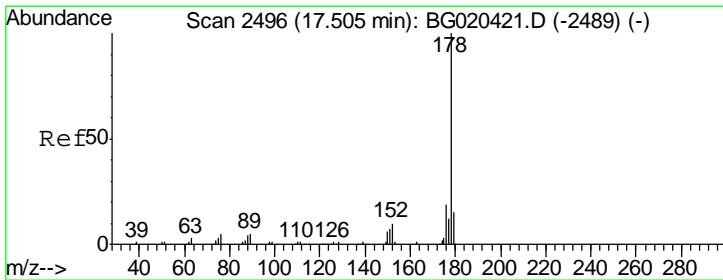
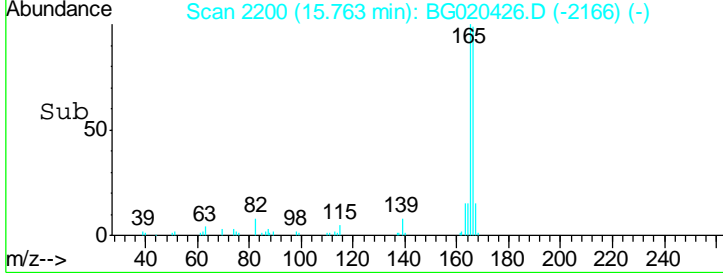
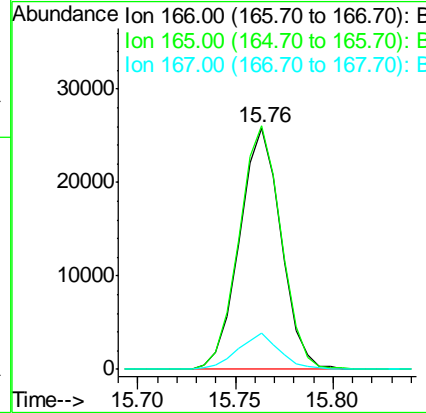
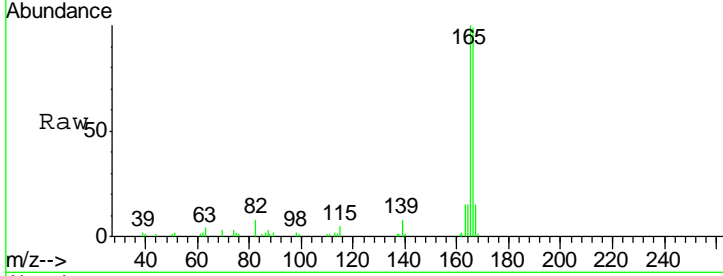




#59  
 Fluorene  
 Concen: 8.93 ng/ul  
 RT: 15.76 min Scan# 2200  
 Delta R.T. -0.00 min  
 Lab File: BG020426.D  
 Acq: 23 Dec 2015 3:30

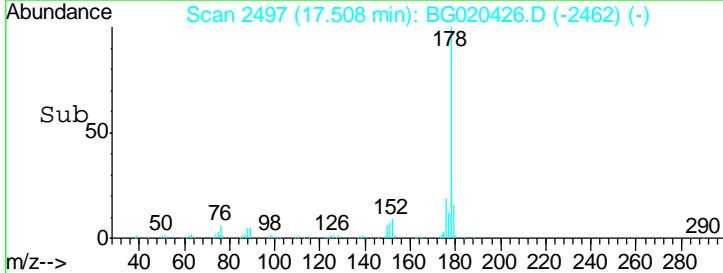
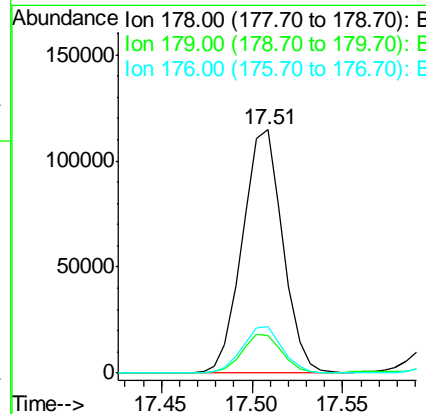
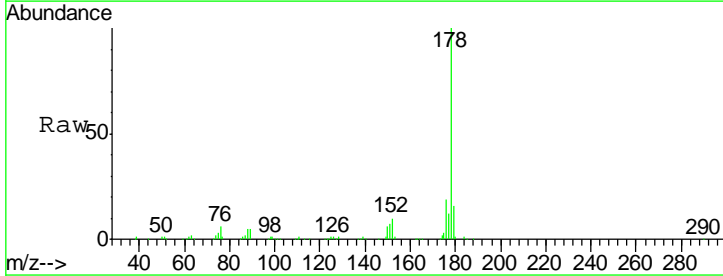
Instrument :  
 BNA\_G  
 ClientSampled :  
 D9N71DL

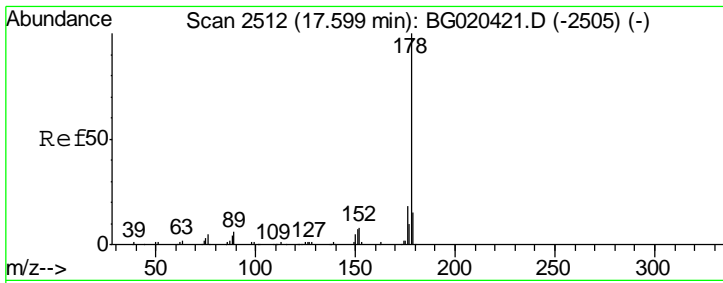
Tgt Ion	Resp	Ion Ratio	Lower	Upper
166	37899	100		
165		100.9	81.4	122.0
167		15.2	11.2	16.8



#70  
 Phenanthrene  
 Concen: 25.71 ng/ul  
 RT: 17.51 min Scan# 2497  
 Delta R.T. 0.00 min  
 Lab File: BG020426.D  
 Acq: 23 Dec 2015 3:30

Tgt Ion	Resp	Ion Ratio	Lower	Upper
178	177204	100		
179		15.6	12.9	19.3
176		19.1	15.3	22.9

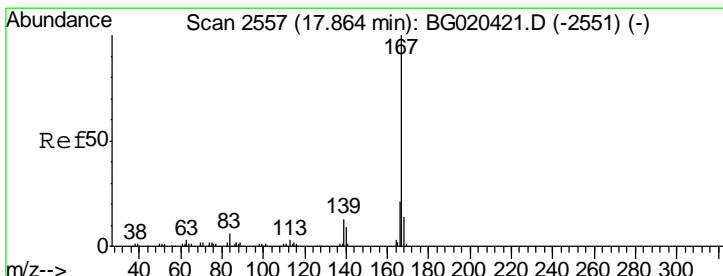
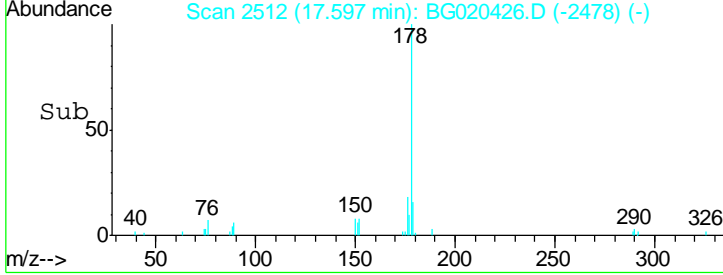
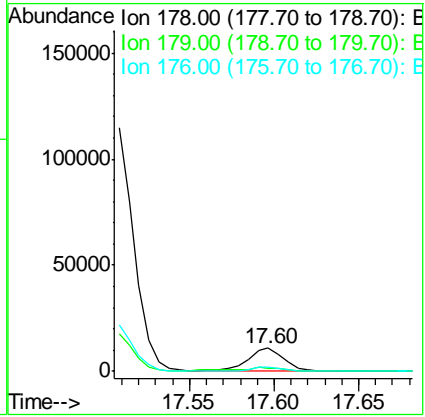
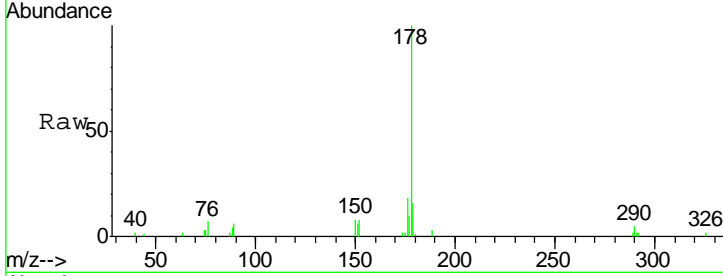




#72  
 Anthracene  
 Concen: 2.38 ng/ul  
 RT: 17.60 min Scan# 2512  
 Delta R.T. -0.00 min  
 Lab File: BG020426.D  
 Acq: 23 Dec 2015 3:30

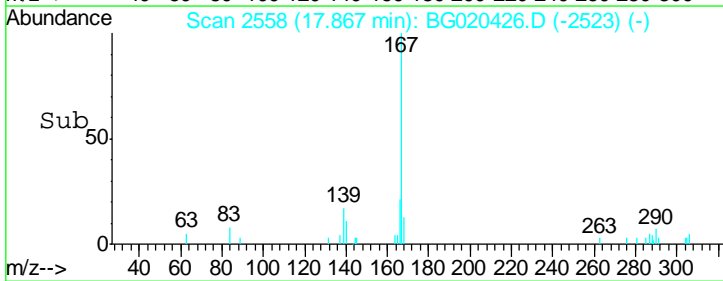
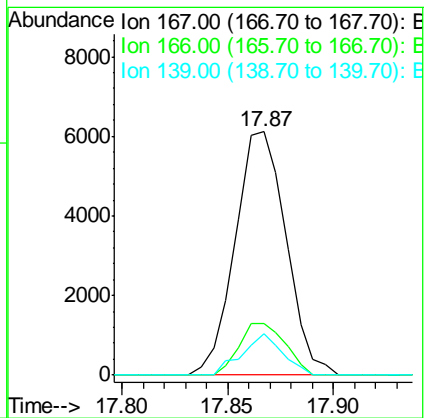
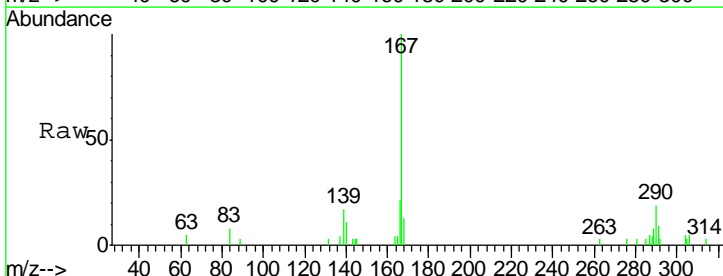
Instrument :  
 BNA\_G  
 ClientSampled :  
 D9N71DL

Tgt Ion	Resp	Lower	Upper
178	16617		
179	15.6	12.3	18.5
176	17.8	14.3	21.5

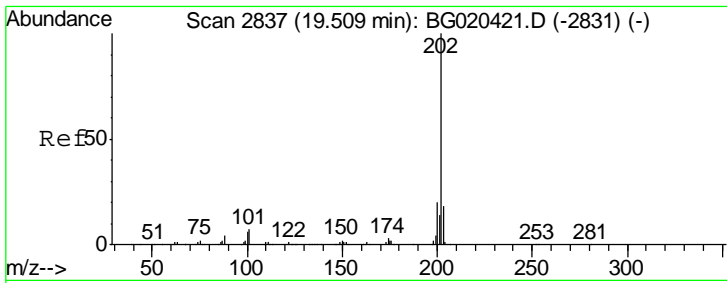


#75  
 Carbazole  
 Concen: 1.74 ng/ul  
 RT: 17.87 min Scan# 2558  
 Delta R.T. 0.00 min  
 Lab File: BG020426.D  
 Acq: 23 Dec 2015 3:30

Tgt Ion	Resp	Lower	Upper
167	10222		
166	21.2	17.0	25.6
139	17.2	10.1	15.1#



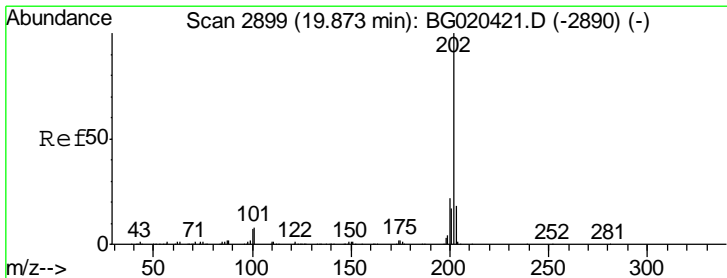
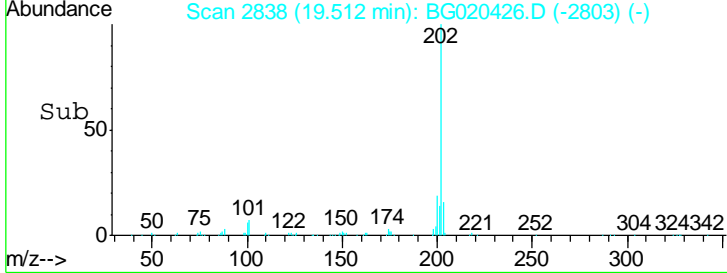
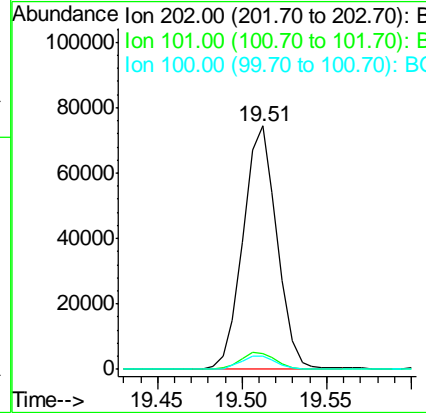
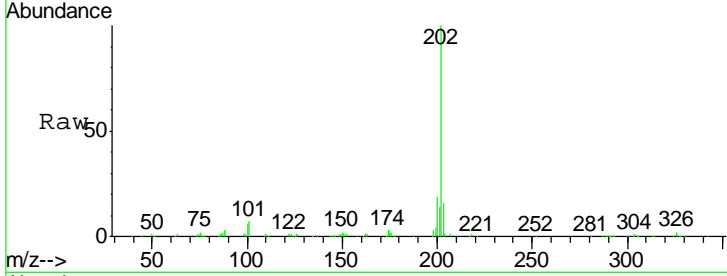




#77  
 Fluoranthene  
 Concen: 12.88 ng/ul  
 RT: 19.51 min Scan# 2838  
 Delta R.T. 0.00 min  
 Lab File: BG020426.D  
 Acq: 23 Dec 2015 3:30

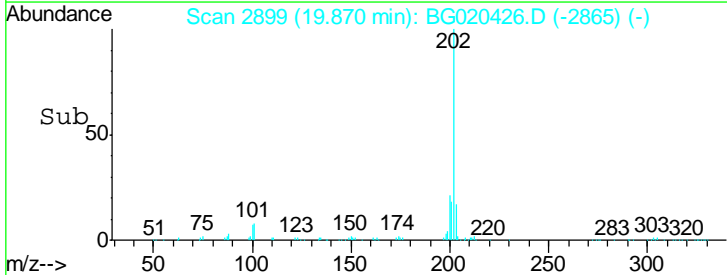
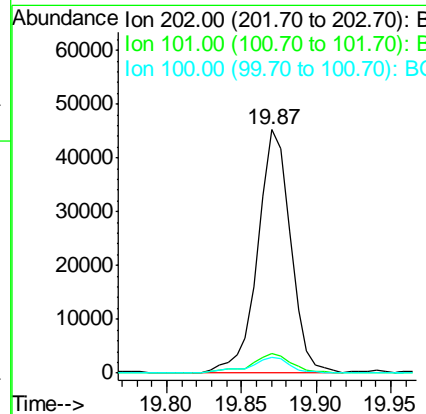
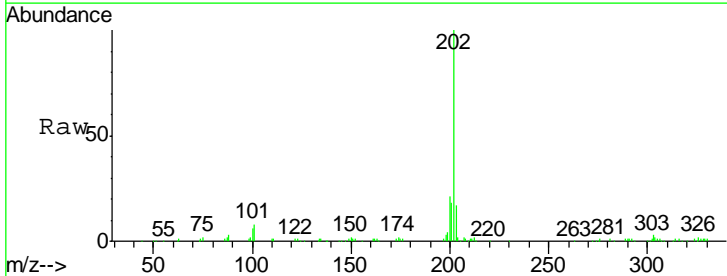
Instrument :  
 BNA\_G  
 ClientSampled :  
 D9N71DL

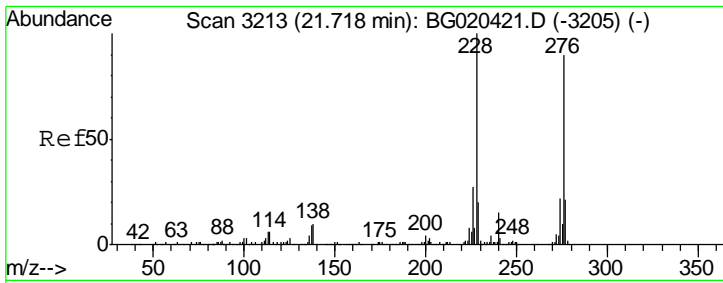
Tgt Ion	Resp	Lower	Upper
202	103745		
101	6.6	6.2	9.4
100	5.6	5.1	7.7



#80  
 Pyrene  
 Concen: 7.32 ng/ul  
 RT: 19.87 min Scan# 2899  
 Delta R.T. -0.00 min  
 Lab File: BG020426.D  
 Acq: 23 Dec 2015 3:30

Tgt Ion	Resp	Lower	Upper
202	68930		
101	8.1	7.0	10.4
100	6.5	6.4	9.6



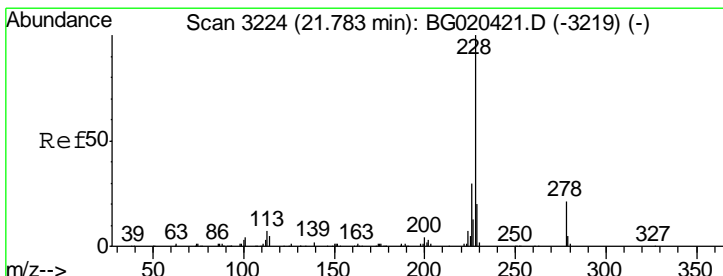
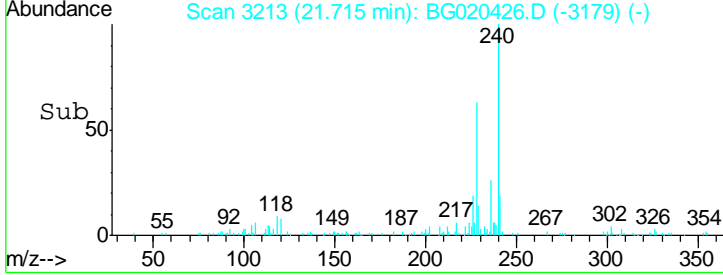
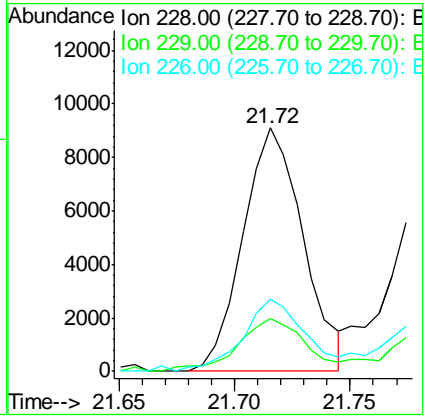
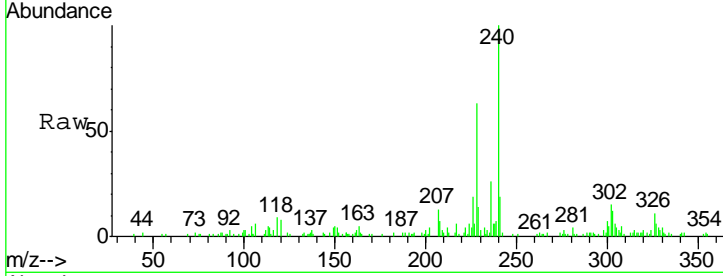


#83  
 Benzo(a)anthracene  
 Concen: 1.83 ng/ul  
 RT: 21.72 min Scan# 3213  
 Delta R.T. -0.00 min  
 Lab File: BG020426.D  
 Acq: 23 Dec 2015 3:30

Instrument : BNA\_G  
 ClientSampled : D9N71DL

Tgt Ion: 228 Resp: 16583

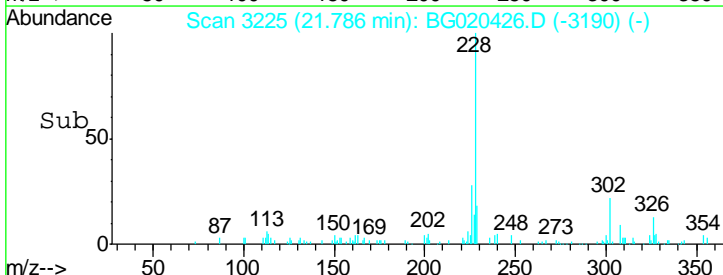
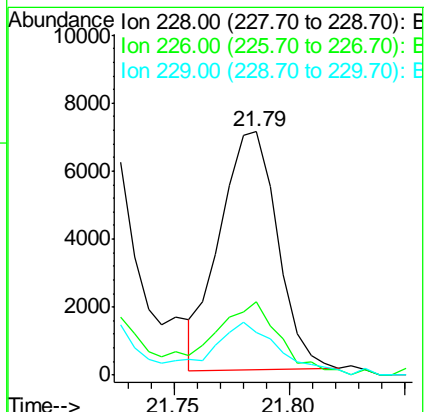
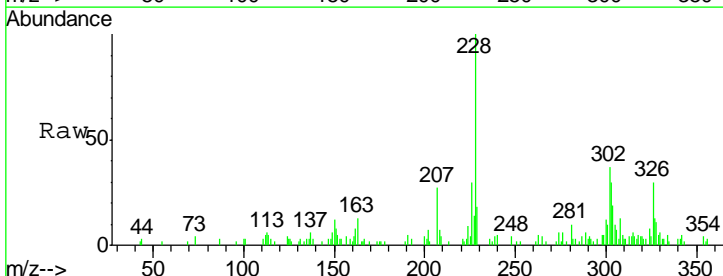
Ion	Ratio	Lower	Upper
228	100		
229	21.8	15.8	23.8
226	29.9	21.8	32.6

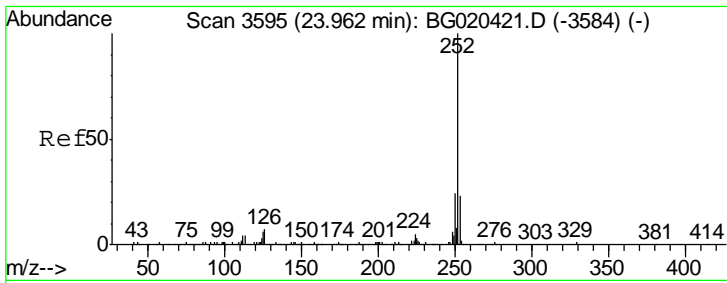


#85  
 Chrysene  
 Concen: 1.43 ng/ul  
 RT: 21.79 min Scan# 3225  
 Delta R.T. 0.00 min  
 Lab File: BG020426.D  
 Acq: 23 Dec 2015 3:30

Tgt Ion: 228 Resp: 12214

Ion	Ratio	Lower	Upper
228	100		
226	30.2	23.9	35.9
229	17.7	15.6	23.4

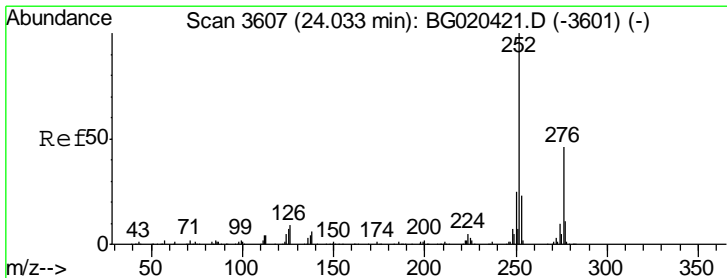
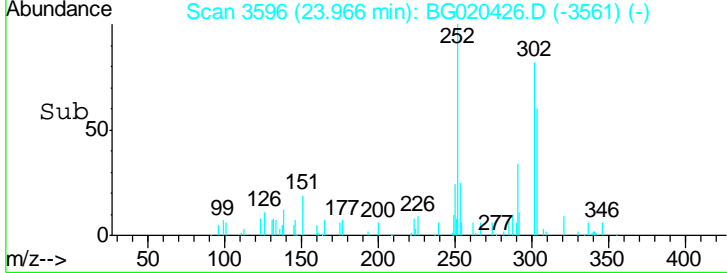
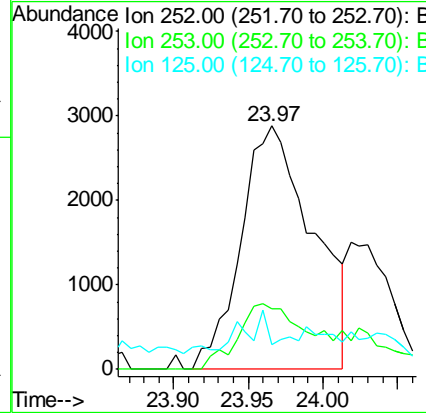
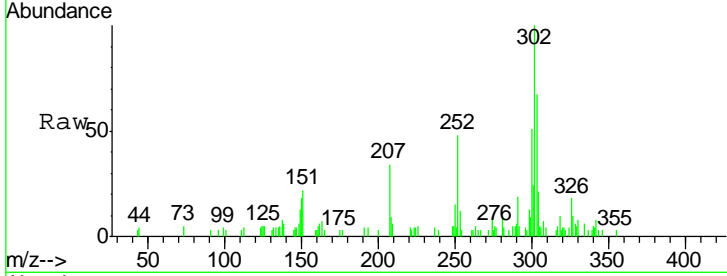




#88  
 Benzo(b)fluoranthene  
 Concen: 1.04 ng/ul  
 RT: 23.97 min Scan# 3596  
 Delta R.T. 0.00 min  
 Lab File: BG020426.D  
 Acq: 23 Dec 2015 3:30

Instrument :  
 BNA\_G  
 ClientSampleID :  
 D9N71DL

Tgt Ion	Resp	Lower	Upper
252	100		
253	24.8	16.7	25.1
125	10.2	6.2	9.2#



#89  
 Benzo(k)fluoranthene  
 Concen: 1.08 ng/ul  
 RT: 23.97 min Scan# 3596  
 Delta R.T. -0.07 min  
 Lab File: BG020426.D  
 Acq: 23 Dec 2015 3:30

Tgt Ion	Resp	Lower	Upper
252	100		
253	24.8	17.9	26.9
125	10.2	5.8	8.6#

