

Data Path : Z:\HPCHEM1\BNA G\DATA\BG122215\
 Data File : BG020461.D
 Acq On : 24 Dec 2015 2:42
 Operator : UM/SJ
 Sample : G4849-09DL 20X
 Misc :
 ALS Vial : 51 Sample Multiplier: 1

Instrument :
 BNA_G
 ClientSampleId :
 D9N73MEDL

Integration Parameters: LSCINT.P

Integrator: RTE
 Smoothing : OFF
 Sampling : 1
 Start Thrs: 0.2
 Stop Thrs : 0

Filtering: 5
 Min Area: 0.1 % of largest Peak
 Max Peaks: 100
 Peak Location: TOP

If leading or trailing edge < 100 prefer < Baseline drop else tangent >
 Peak separation: 5

Method : Z:\HPCHEM1\BNA G\METHODS\SOM02.2-EPA-BG121415.M
 Title : SVOA CALIBRATION

Signal : TIC

peak #	R.T. min	first scan	max scan	last scan	PK TY	peak height	corr. area	corr. % max.	% of total
1	3.102	41	45	56	rVB2	7501	14662	1.91%	0.253%
2	7.245	745	750	757	rBV3	2589	4661	0.61%	0.080%
3	7.403	773	777	783	rBB	2514	4115	0.54%	0.071%
4	7.615	809	813	819	rBB4	3072	4565	0.60%	0.079%
5	8.085	887	893	903	rBB	58276	101170	13.19%	1.743%
6	8.796	1009	1014	1021	rBB3	3090	5768	0.75%	0.099%
7	9.254	1087	1092	1099	rBB	3628	5968	0.78%	0.103%
8	10.517	1303	1307	1314	rBB3	3137	5961	0.78%	0.103%
9	10.899	1365	1372	1376	rBV	92696	163861	21.37%	2.824%
10	10.952	1376	1381	1390	rVV	106901	192696	25.13%	3.321%
11	11.040	1391	1396	1397	rVV2	2789	3597	0.47%	0.062%
12	12.550	1646	1653	1664	rVB	68718	113295	14.77%	1.952%
13	12.768	1684	1690	1698	rVB	33437	53799	7.02%	0.927%
14	13.549	1817	1823	1833	rBB	25348	37276	4.86%	0.642%
15	13.749	1852	1857	1866	rBB	7357	11569	1.51%	0.199%
16	13.878	1874	1879	1880	rBV3	9723	13632	1.78%	0.235%
17	14.037	1899	1906	1911	rBV2	15608	27712	3.61%	0.478%
18	14.113	1911	1919	1924	rVV2	13949	33378	4.35%	0.575%
19	14.272	1939	1946	1950	rBV2	6071	8789	1.15%	0.151%
20	14.413	1964	1970	1973	rBV2	14748	24301	3.17%	0.419%
21	14.718	2011	2022	2027	rBV2	163263	276028	36.00%	4.757%
22	14.783	2027	2033	2039	rVV	158706	250173	32.62%	4.311%
23	14.847	2039	2044	2049	rVV	5088	7284	0.95%	0.126%
24	14.924	2051	2057	2063	rBV3	2211	4991	0.65%	0.086%
25	15.024	2069	2074	2078	rBB4	4280	6941	0.91%	0.120%
26	15.112	2083	2089	2097	rVV	109544	162604	21.21%	2.802%
27	15.188	2097	2102	2107	rVB3	3296	4581	0.60%	0.079%
28	15.323	2121	2125	2130	rVB2	2474	3431	0.45%	0.059%
29	15.705	2186	2190	2194	rVV	20214	29110	3.80%	0.502%
30	15.764	2194	2200	2208	rVB	145643	225577	29.42%	3.887%
31	15.852	2208	2215	2217	rBV2	5624	7720	1.01%	0.133%
32	15.887	2217	2221	2223	rVV2	9152	13295	1.73%	0.229%
33	15.923	2223	2227	2232	rVV2	16476	25443	3.32%	0.438%
34	15.970	2232	2235	2238	rVV2	3179	4421	0.58%	0.076%

Data Path : Z:\HPCHEM1\BNA G\DATA\BG122215\
 Data File : BG020461.D
 Acq On : 24 Dec 2015 2:42
 Operator : UM/SJ
 Sample : G4849-09DL 20X
 Misc :
 ALS Vial : 51 Sample Multiplier: 1

Instrument :
 BNA_G
 ClientSampleId :
 D9N73MEDL

Integration Parameters: LSCINT.P

Integrator: RTE
 Smoothing : OFF
 Sampling : 1
 Start Thrs: 0.2
 Stop Thrs : 0

Filtering: 5
 Min Area: 0.1 % of largest Peak
 Max Peaks: 100
 Peak Location: TOP

If leading or trailing edge < 100 prefer < Baseline drop else tangent >
 Peak separation: 5

Method : Z:\HPCHEM1\BNA G\METHODS\SOM02.2-EPA-BG121415.M
 Title : SVOA CALIBRATION

35	16.011	2238	2242	2245	rVV2	8132	11279	1.47%	0.194%
36	16.052	2245	2249	2255	rVB	17960	26025	3.39%	0.448%
37	16.199	2265	2274	2282	rBV	20749	41490	5.41%	0.715%
38	16.287	2286	2289	2295	rVB2	3016	4742	0.62%	0.082%
39	16.551	2330	2334	2340	rVB2	9925	13860	1.81%	0.239%
40	16.763	2358	2370	2375	rBV3	13770	29135	3.80%	0.502%
41	16.810	2375	2378	2384	rVV3	6326	9146	1.19%	0.158%
42	16.916	2389	2396	2401	rVV3	5502	9798	1.28%	0.169%
43	16.986	2401	2408	2411	rVV5	4001	8555	1.12%	0.147%
44	17.027	2411	2415	2419	rVV3	6005	9738	1.27%	0.168%
45	17.109	2426	2429	2436	rVB5	2525	4301	0.56%	0.074%
46	17.186	2437	2442	2451	rBV5	6007	15312	2.00%	0.264%
47	17.280	2451	2458	2465	rVB	33311	48155	6.28%	0.830%
48	17.462	2482	2489	2492	rBV	225464	336411	43.87%	5.797%
49	17.503	2492	2496	2502	rVV	526373	766819	100.00%	13.215%
50	17.556	2502	2505	2508	rVV2	31316	45613	5.95%	0.786%
51	17.591	2508	2511	2517	rVV	39088	57541	7.50%	0.992%
52	17.650	2517	2521	2526	rVB3	4519	7337	0.96%	0.126%
53	17.862	2550	2557	2562	rBV2	23039	36599	4.77%	0.631%
54	17.979	2573	2577	2583	rBV3	5785	9447	1.23%	0.163%
55	18.044	2583	2588	2596	rBV3	2688	4442	0.58%	0.077%
56	18.179	2608	2611	2619	rVB4	2455	4439	0.58%	0.076%
57	18.337	2632	2638	2642	rBV	28435	42528	5.55%	0.733%
58	18.384	2642	2646	2652	rVB	39639	57768	7.53%	0.996%
59	18.461	2652	2659	2664	rBV	10734	18505	2.41%	0.319%
60	18.531	2664	2671	2675	rBV2	59756	98893	12.90%	1.704%
61	18.678	2692	2696	2701	rBV4	2720	4153	0.54%	0.072%
62	18.825	2716	2721	2726	rBV	23192	32041	4.18%	0.552%
63	18.866	2726	2728	2735	rVB2	2890	4180	0.55%	0.072%
64	19.072	2758	2763	2767	rVV2	3758	5299	0.69%	0.091%
65	19.119	2767	2771	2775	rVV3	3131	4464	0.58%	0.077%
66	19.242	2787	2792	2797	rBV3	6438	11688	1.52%	0.201%
67	19.313	2799	2804	2811	rVV4	3955	10500	1.37%	0.181%
68	19.377	2812	2815	2820	rVV2	2418	3806	0.50%	0.066%
69	19.507	2831	2837	2843	rBV	308115	431749	56.30%	7.440%
70	19.560	2844	2846	2850	rVB2	2922	3759	0.49%	0.065%
71	19.601	2850	2853	2858	rBV2	4285	5633	0.73%	0.097%

Data Path : Z:\HPCHEM1\BNA G\DATA\BG122215\
 Data File : BG020461.D
 Acq On : 24 Dec 2015 2:42
 Operator : UM/SJ
 Sample : G4849-09DL 20X
 Misc :
 ALS Vial : 51 Sample Multiplier: 1

Instrument :
 BNA_G
 ClientSampleId :
 D9N73MEDL

Integration Parameters: LSCINT.P

Integrator: RTE
 Smoothing : OFF
 Sampling : 1
 Start Thrs: 0.2
 Stop Thrs : 0

Filtering: 5
 Min Area: 0.1 % of largest Peak
 Max Peaks: 100
 Peak Location: TOP

If leading or trailing edge < 100 prefer < Baseline drop else tangent >
 Peak separation: 5

Method : Z:\HPCHEM1\BNA G\METHODS\SOM02.2-EPA-BG121415.M
 Title : SVOA CALIBRATION

72	19.753	2875	2879	2888	rVB	7287	11789	1.54%	0.203%
73	19.842	2888	2894	2896	rBV3	76121	126833	16.54%	2.186%
74	19.871	2896	2899	2907	rVV	196433	268889	35.07%	4.634%
75	19.936	2907	2910	2918	rVB3	8083	12821	1.67%	0.221%
76	20.041	2923	2928	2934	rBV	10103	13967	1.82%	0.241%
77	20.112	2936	2940	2947	rVB2	4548	7608	0.99%	0.131%
78	20.194	2947	2954	2960	rBV4	8072	19204	2.50%	0.331%
79	20.247	2960	2963	2968	rVB	4315	5519	0.72%	0.095%
80	20.359	2969	2982	2987	rBV	31226	55614	7.25%	0.958%
81	20.459	2993	2999	3003	rBV	33881	50057	6.53%	0.863%
82	20.511	3003	3008	3012	rVV5	9658	20416	2.66%	0.352%
83	20.552	3013	3015	3019	rVV2	6667	7582	0.99%	0.131%
84	20.594	3019	3022	3026	rVB3	3244	4914	0.64%	0.085%
85	20.658	3029	3033	3036	rBV	3235	4326	0.56%	0.075%
86	20.705	3036	3041	3044	rVV3	3971	6225	0.81%	0.107%
87	20.882	3068	3071	3076	rBV	3394	5123	0.67%	0.088%
88	20.987	3087	3089	3098	rVB8	3572	6373	0.83%	0.110%
89	21.070	3101	3103	3107	rBV3	2917	4590	0.60%	0.079%
90	21.310	3140	3144	3148	rBV	7222	9942	1.30%	0.171%
91	21.352	3148	3151	3155	rVV3	6409	9099	1.19%	0.157%
92	21.404	3156	3160	3165	rVB4	6889	11650	1.52%	0.201%
93	21.733	3207	3216	3221	rBV2	279113	520940	67.94%	8.978%
94	21.780	3221	3224	3232	rVB	36028	53864	7.02%	0.928%
95	21.933	3245	3250	3256	rBV2	8456	14824	1.93%	0.255%
96	23.954	3588	3594	3596	rBV3	9026	15945	2.08%	0.275%
97	24.025	3602	3606	3614	rVB5	6837	14987	1.95%	0.258%
98	24.695	3713	3720	3727	rBV2	4971	10628	1.39%	0.183%
99	24.771	3727	3733	3740	rVV	11004	28457	3.71%	0.490%
100	25.000	3762	3772	3790	rBV2	136947	393007	51.25%	6.773%

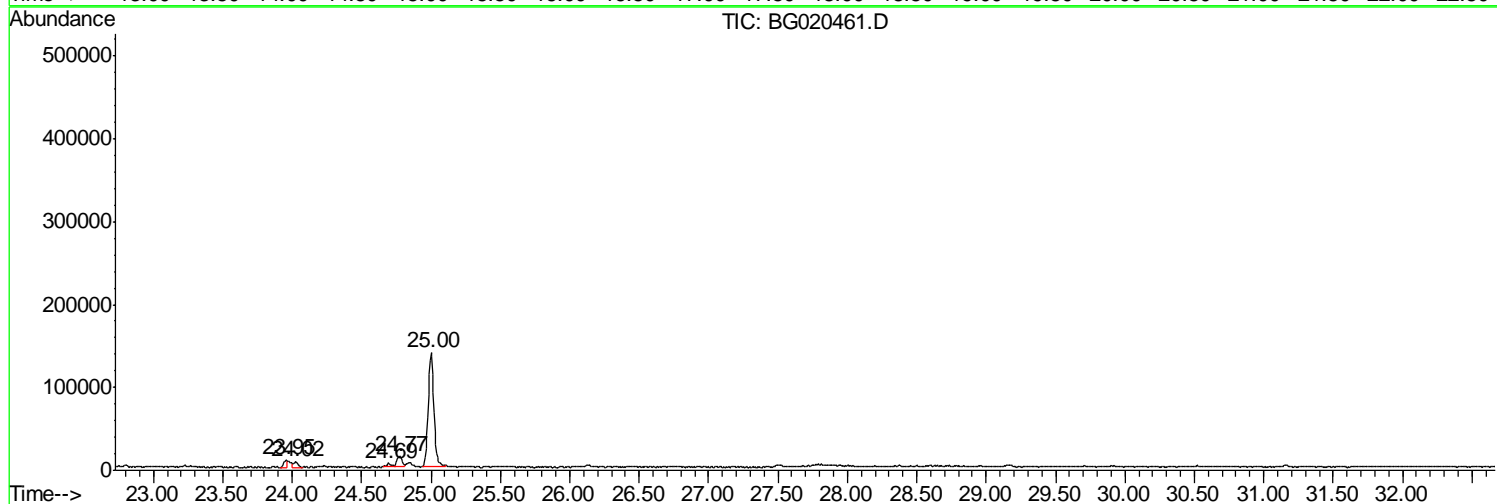
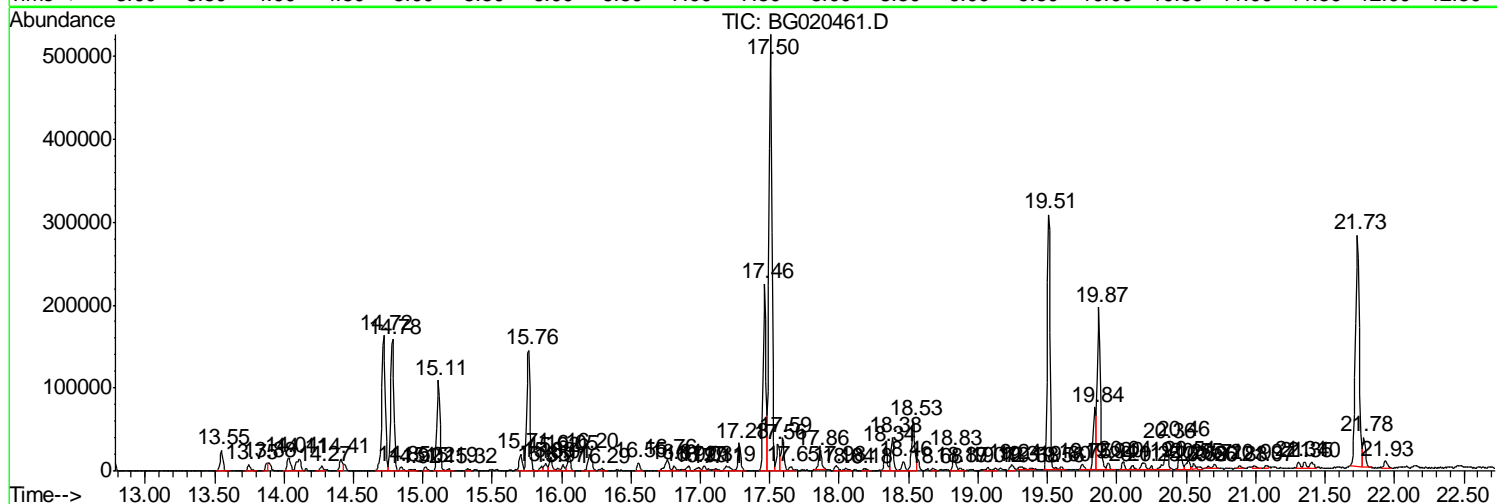
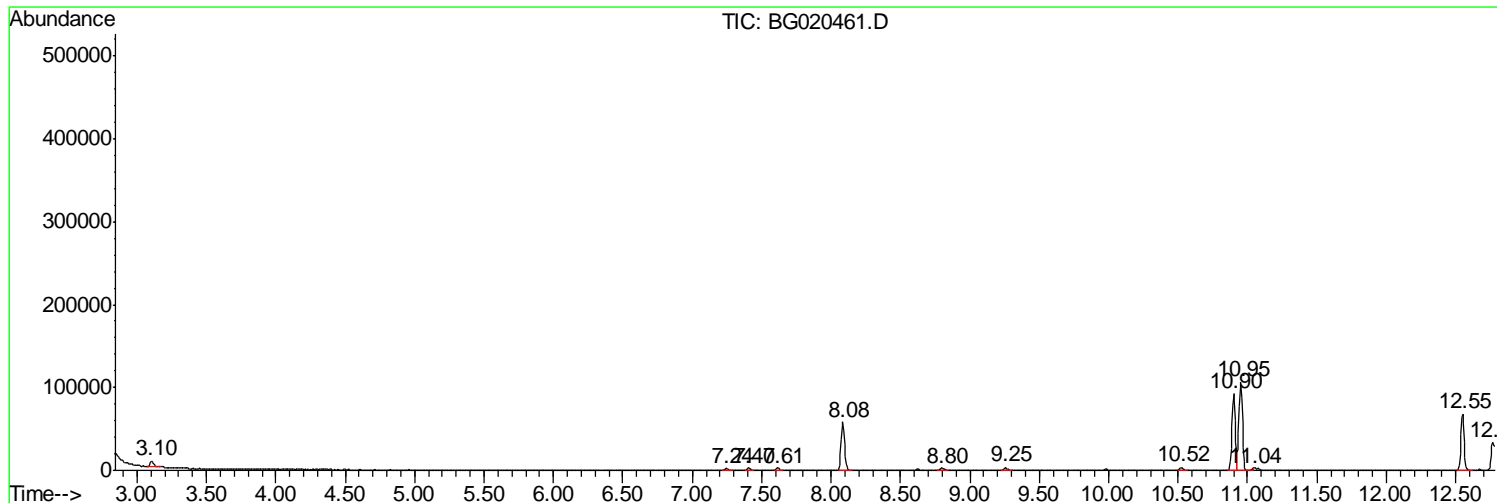
Sum of corrected areas: 5802717

Data Path : Z:\HPCHEM1\BNA G\DATA\BG122215\
 Data File : BG020461.D
 Acq On : 24 Dec 2015 2:42
 Operator : UM/SJ
 Sample : G4849-09DL 20X
 Misc :
 ALS Vial : 51 Sample Multiplier: 1

Instrument :
 BNA_G
Client Sampled :
 D9N73MEDL

Quant Method : Z:\HPCHEM1\BNA G\METHODS\SOM02.2-EPA-BG121415.M
 Quant Title : SVOA CALIBRATION

TIC Library : C:\DATABASE\NIST02.L
 TIC Integration Parameters: LSCINT.P



Data Path : Z:\HPCHEM1\BNA G\DATA\BG122215\
 Data File : BG020461.D
 Acq On : 24 Dec 2015 2:42
 Operator : UM/SJ
 Sample : G4849-09DL 20X
 Misc :
 ALS Vial : 51 Sample Multiplier: 1

Instrument :
 BNA_G
 ClientSampled :
 D9N73MEDL

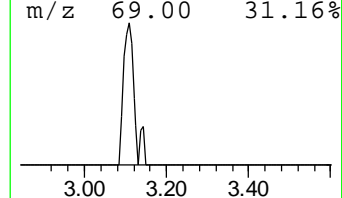
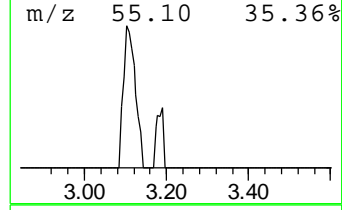
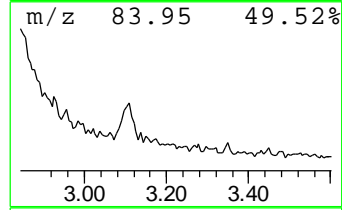
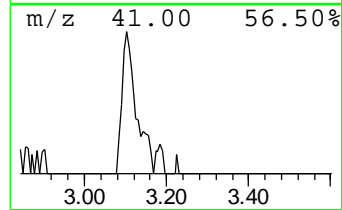
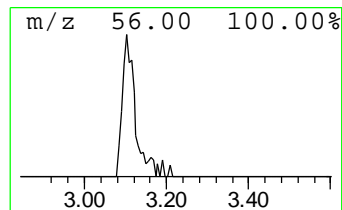
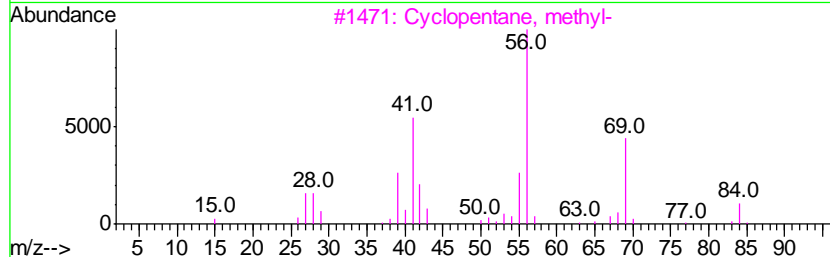
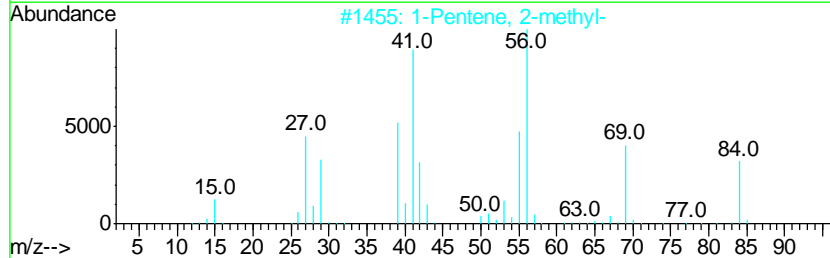
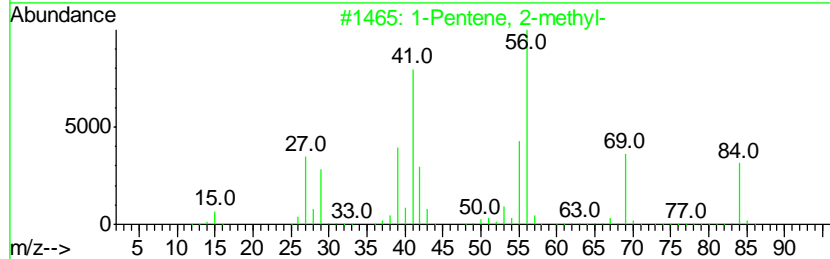
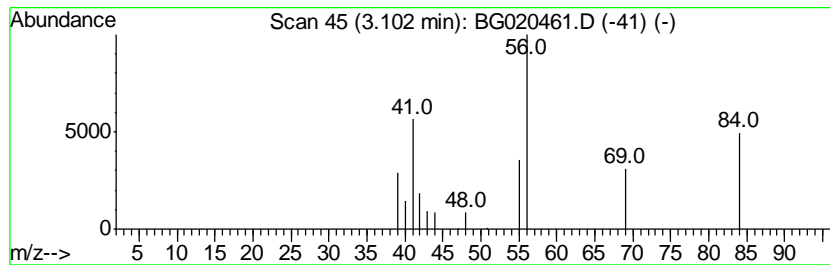
Quant Method : Z:\HPCHEM1\BNA G\METHODS\SOM02.2-EPA-BG121415.M
 Quant Title : SVOA CALIBRATION

TIC Library : C:\DATABASE\NIST02.L
 TIC Integration Parameters: LSCINT.P

 Peak Number 1 (DEL) Alkane: Cyclic3.10 Concentration Rank 4

R.T.	EstConc	Area	Relative to ISTD	R.T.
3.10	2.90 ng/ul	14662	1,4-Dichlorobenzene-d4	8.08

Hit#	of	Tentative ID	MW	MolForm	CAS#	Qual
1	5	1-Pentene, 2-methyl-	84	C6H12	000763-29-1	56
2		1-Pentene, 2-methyl-	84	C6H12	000763-29-1	39
3		Cyclopentane, methyl-	84	C6H12	000096-37-7	9
4		Cyclobutane	56	C4H8	000287-23-0	7
5		Formamide, N-(cyanomethyl)-	84	C3H4N2O	005018-27-9	7



Data Path : Z:\HPCHEM1\BNA G\DATA\BG122215\
 Data File : BG020461.D
 Acq On : 24 Dec 2015 2:42
 Operator : UM/SJ
 Sample : G4849-09DL 20X
 Misc :
 ALS Vial : 51 Sample Multiplier: 1

Instrument :
 BNA_G
 ClientSampleID :
 D9N73MEDL

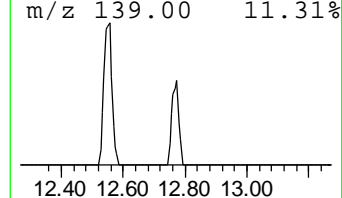
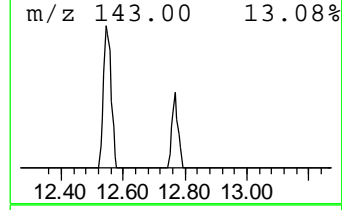
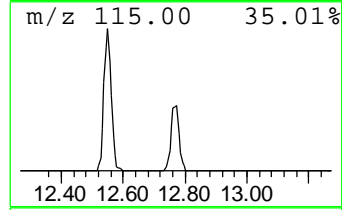
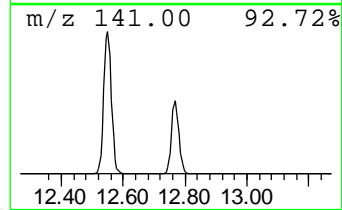
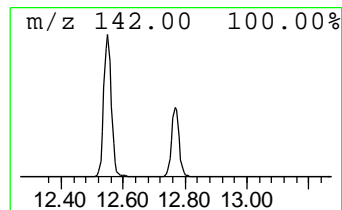
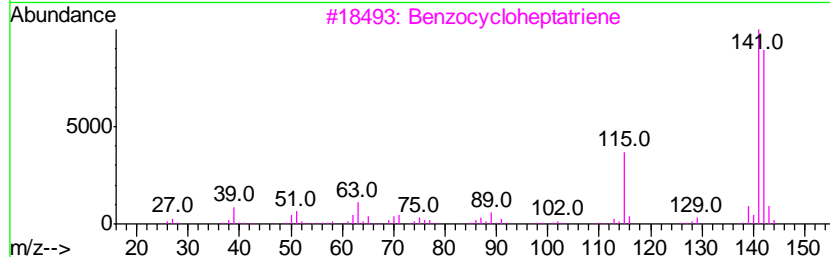
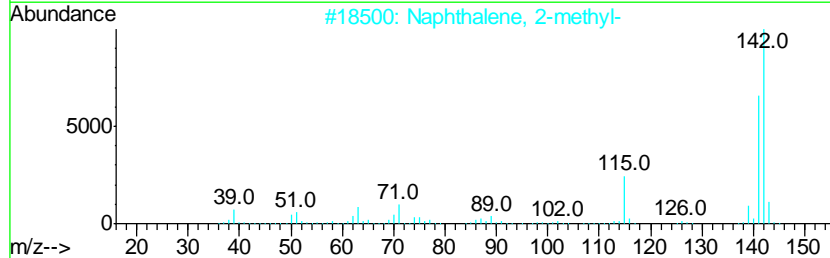
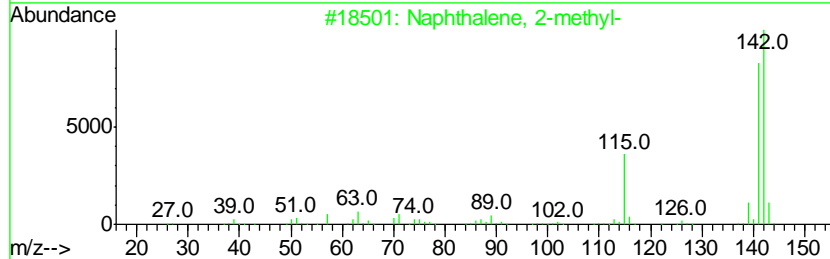
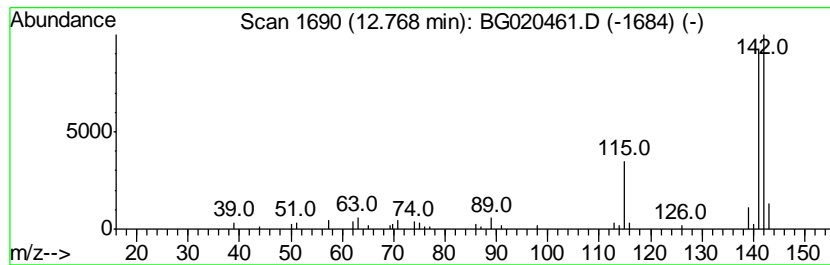
Quant Method : Z:\HPCHEM1\BNA G\METHODS\SOM02.2-EPA-BG121415.M
 Quant Title : SVOA CALIBRATION

TIC Library : C:\DATABASE\NIST02.L
 TIC Integration Parameters: LSCINT.P

 Peak Number 2 Naphthalene, 1-methyl- Concentration Rank 1

R.T.	EstConc	Area	Relative to ISTD	R.T.
12.77	6.57 ng/ul	53799	Naphthalene-d8	10.90

Hit#	of	Tentative ID	MW	MolForm	CAS#	Qual
1	5	Naphthalene, 2-methyl-	142	C11H10	000091-57-6	94
2		Naphthalene, 2-methyl-	142	C11H10	000091-57-6	94
3		Benzocycloheptatriene	142	C11H10	000264-09-5	91
4		Benzocycloheptatriene	142	C11H10	000264-09-5	91
5		Naphthalene, 1-methyl-	142	C11H10	000090-12-0	91



Data Path : Z:\HPCHEM1\BNA G\DATA\BG122215\
 Data File : BG020461.D
 Acq On : 24 Dec 2015 2:42
 Operator : UM/SJ
 Sample : G4849-09DL 20X
 Misc :
 ALS Vial : 51 Sample Multiplier: 1

Instrument :
 BNA_G
 ClientSampleID :
 D9N73MEDL

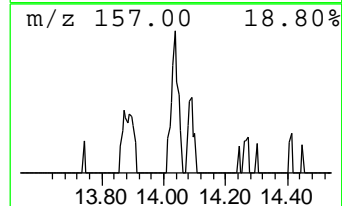
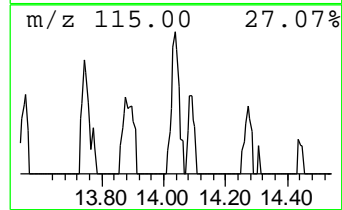
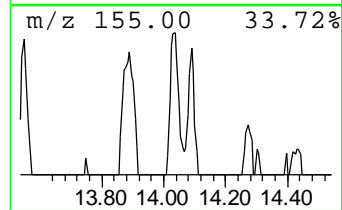
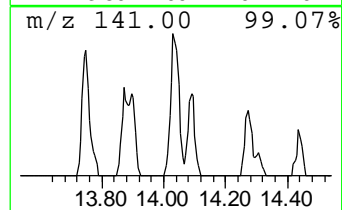
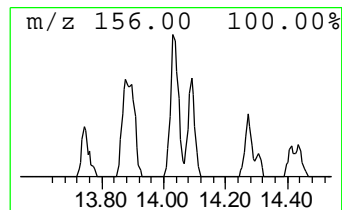
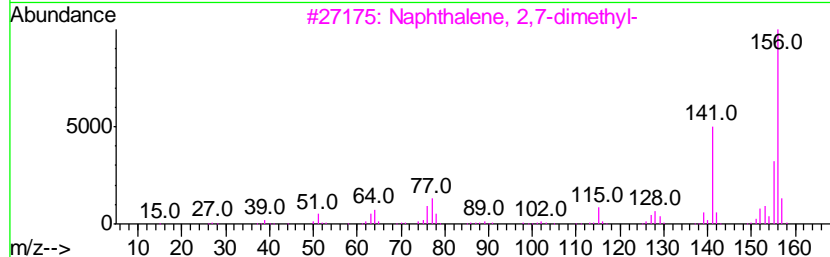
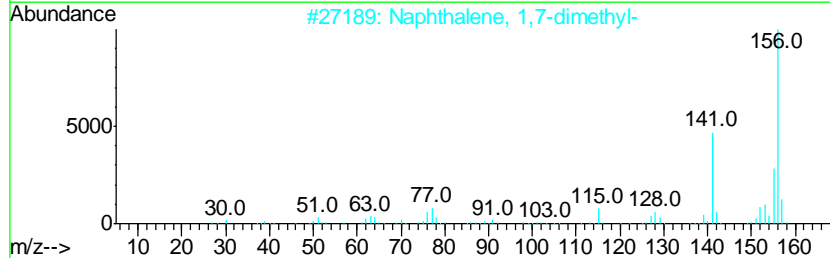
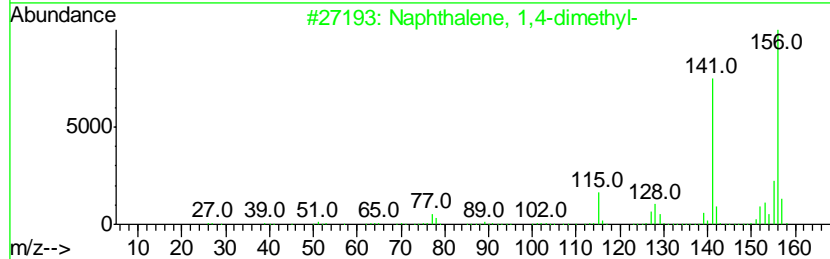
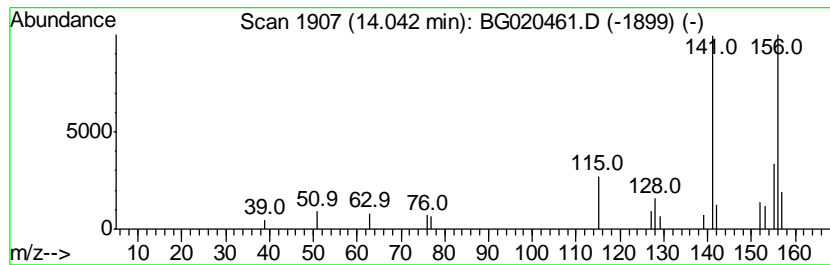
Quant Method : Z:\HPCHEM1\BNA G\METHODS\SOM02.2-EPA-BG121415.M
 Quant Title : SVOA CALIBRATION

TIC Library : C:\DATABASE\NIST02.L
 TIC Integration Parameters: LSCINT.P

 Peak Number 3 Naphthalene, 1,4-dimethyl- Concentration Rank 9

R.T.	EstConc	Area	Relative to ISTD	R.T.
14.04	2.01 ng/ul	27712	Acenaphthene-d10	14.72

Hit#	of	Tentative ID	MW	MolForm	CAS#	Qual
1	5	Naphthalene, 1,4-dimethyl-	156	C12H12	000571-58-4	96
2		Naphthalene, 1,7-dimethyl-	156	C12H12	000575-37-1	95
3		Naphthalene, 2,7-dimethyl-	156	C12H12	000582-16-1	94
4		Naphthalene, 2,7-dimethyl-	156	C12H12	000582-16-1	94
5		Naphthalene, 2,3-dimethyl-	156	C12H12	000581-40-8	93



Data Path : Z:\HPCHEM1\BNA G\DATA\BG122215\
 Data File : BG020461.D
 Acq On : 24 Dec 2015 2:42
 Operator : UM/SJ
 Sample : G4849-09DL 20X
 Misc :
 ALS Vial : 51 Sample Multiplier: 1

Instrument :
 BNA_G
 ClientSampleID :
 D9N73MEDL

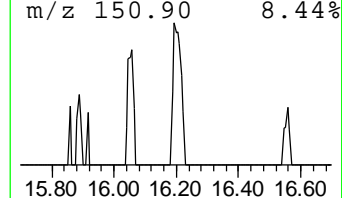
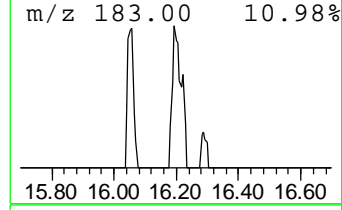
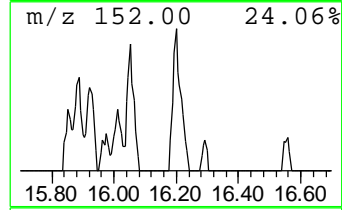
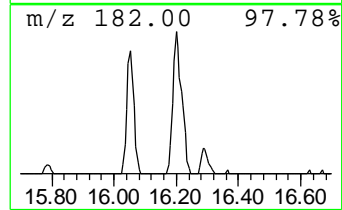
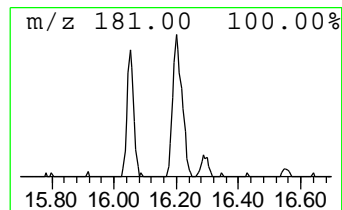
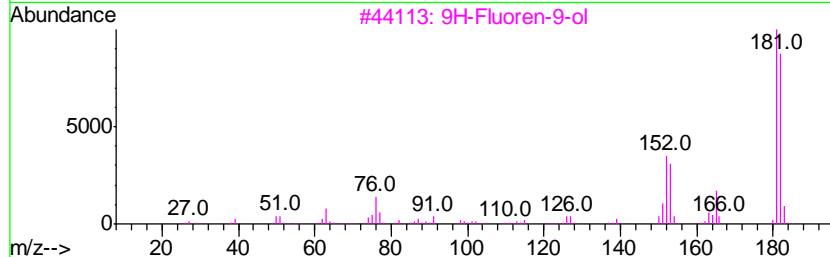
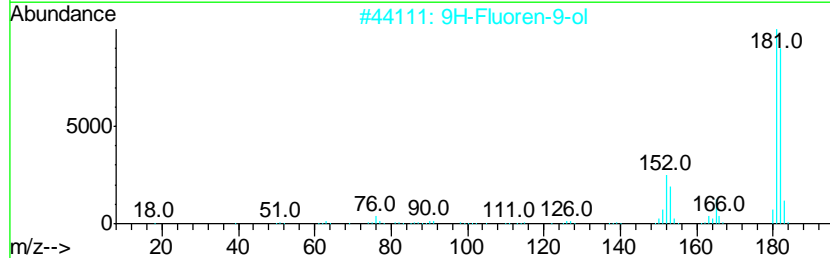
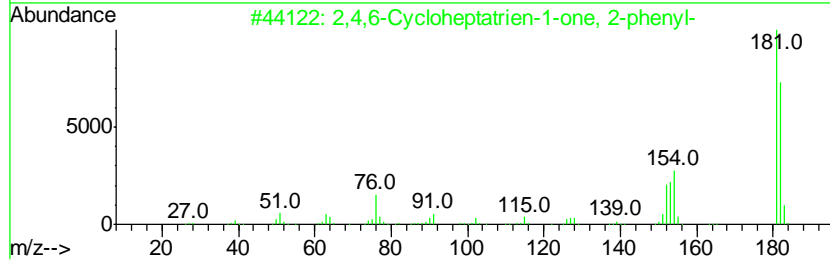
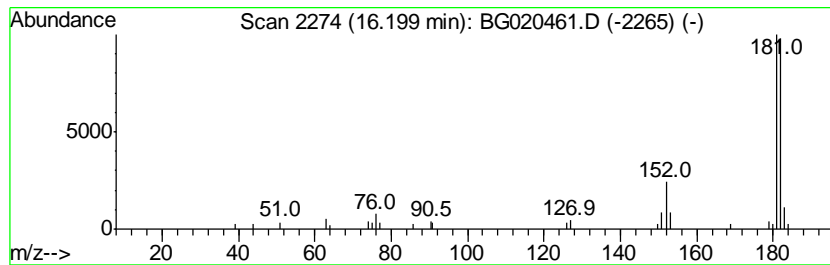
Quant Method : Z:\HPCHEM1\BNA G\METHODS\SOM02.2-EPA-BG121415.M
 Quant Title : SVOA CALIBRATION

TIC Library : C:\DATABASE\NIST02.L
 TIC Integration Parameters: LSCINT.P

 Peak Number 4 2,4,6-Cycloheptatrien-1-one... Concentration Rank 7

R.T.	EstConc	Area	Relative to ISTD	R.T.
16.20	2.47 ng/ul	41490	Phenanthrene-d10	17.46

Hit#	of	Tentative ID	MW	MolForm	CAS#	Qual
1	5	2,4,6-Cycloheptatrien-1-one, 2-p...	182	C13H10O	014562-09-5	86
2		9H-Fluoren-9-ol	182	C13H10O	001689-64-1	78
3		9H-Fluoren-9-ol	182	C13H10O	001689-64-1	72
4		[1,1'-Biphenyl]-4-carboxaldehyde	182	C13H10O	003218-36-8	72
5		Dibenzofuran, 4-methyl-	182	C13H10O	007320-53-8	72



Data Path : Z:\HPCHEM1\BNA G\DATA\BG122215\
 Data File : BG020461.D
 Acq On : 24 Dec 2015 2:42
 Operator : UM/SJ
 Sample : G4849-09DL 20X
 Misc :
 ALS Vial : 51 Sample Multiplier: 1

Instrument :
 BNA_G
 ClientSampleID :
 D9N73MEDL

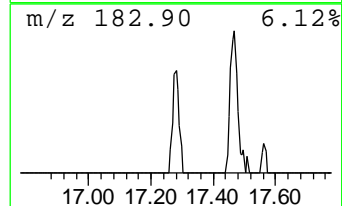
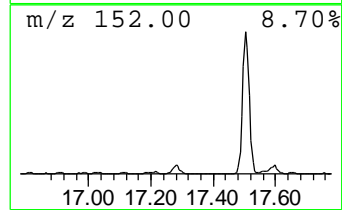
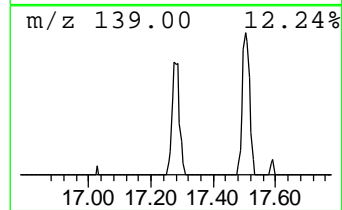
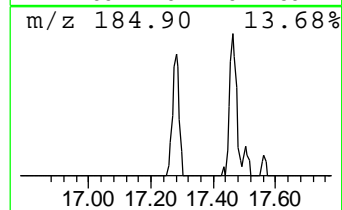
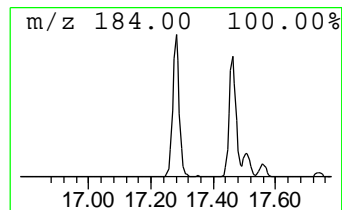
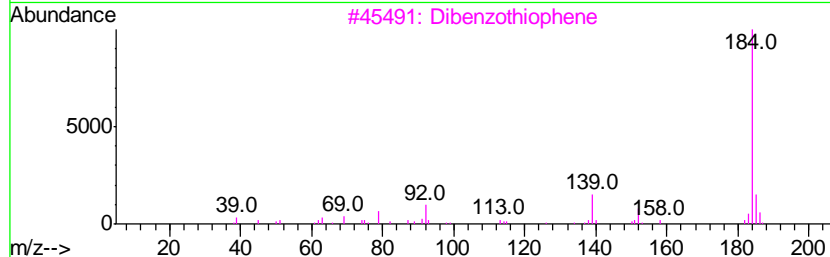
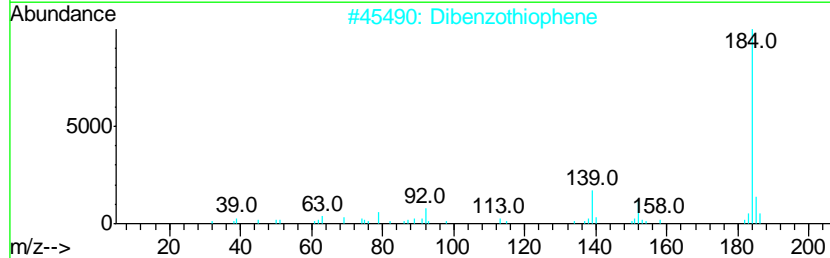
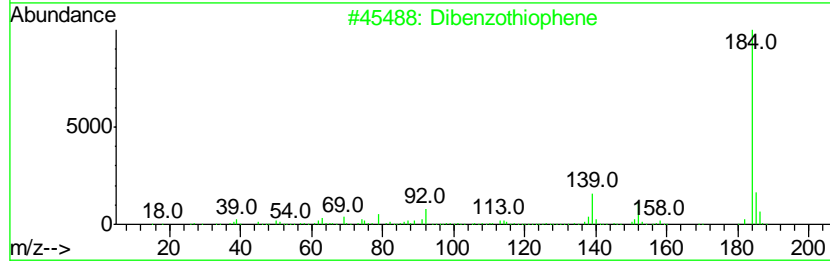
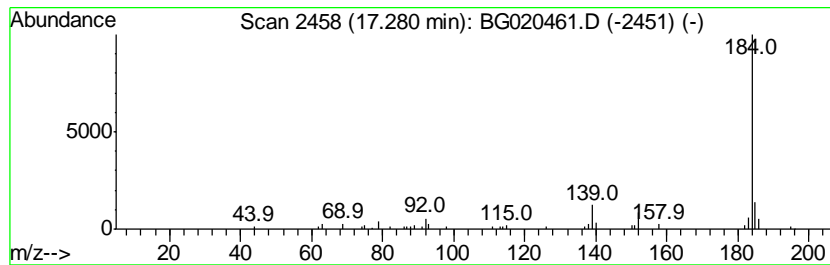
Quant Method : Z:\HPCHEM1\BNA G\METHODS\SOM02.2-EPA-BG121415.M
 Quant Title : SVOA CALIBRATION

TIC Library : C:\DATABASE\NIST02.L
 TIC Integration Parameters: LSCINT.P

 Peak Number 5 Dibenzothiophene Concentration Rank 5

R.T.	EstConc	Area	Relative to ISTD	R.T.
17.28	2.86 ng/ul	48155	Phenanthrene-d10	17.46

Hit#	of	Tentative ID	MW	MolForm	CAS#	Qual
1	5	Dibenzothiophene	184	C12H8S	000132-65-0	96
2		Dibenzothiophene	184	C12H8S	000132-65-0	95
3		Dibenzothiophene	184	C12H8S	000132-65-0	95
4		Naphtho[2,3-b]thiophene	184	C12H8S	000268-77-9	95
5		Dibenzothiophene	184	C12H8S	000132-65-0	94



Data Path : Z:\HPCHEM1\BNA G\DATA\BG122215\
 Data File : BG020461.D
 Acq On : 24 Dec 2015 2:42
 Operator : UM/SJ
 Sample : G4849-09DL 20X
 Misc :
 ALS Vial : 51 Sample Multiplier: 1

Instrument :
 BNA_G
 ClientSampleID :
 D9N73MEDL

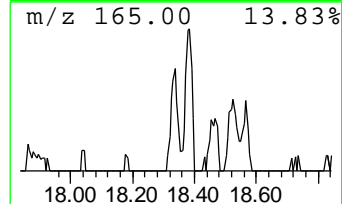
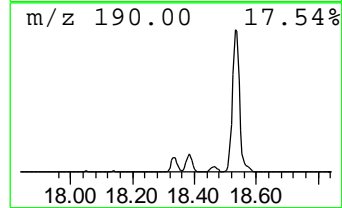
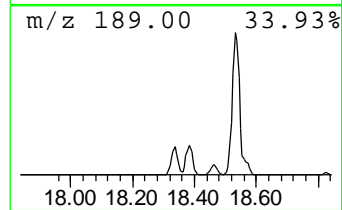
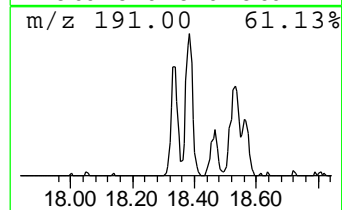
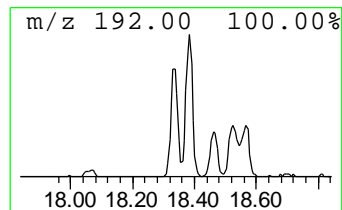
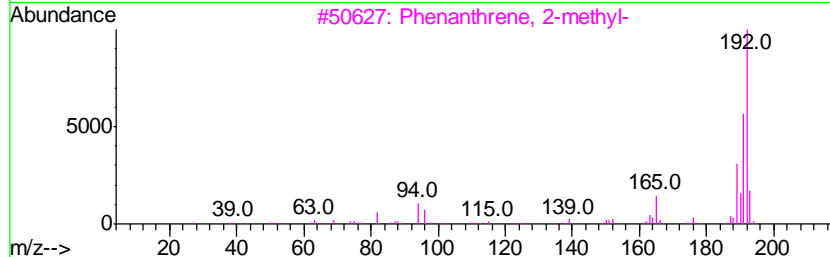
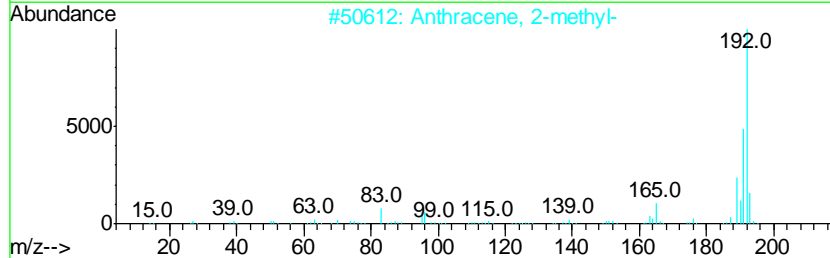
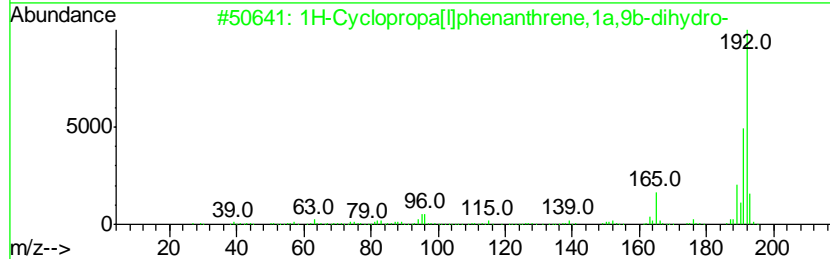
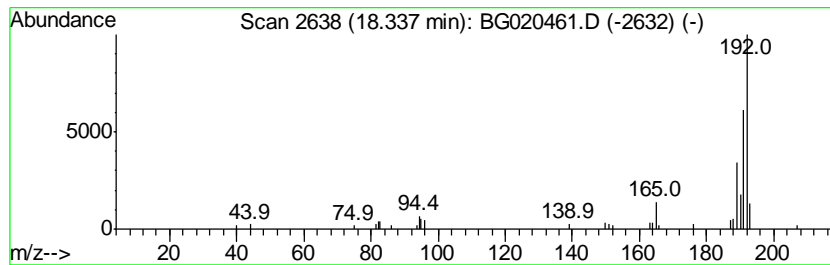
Quant Method : Z:\HPCHEM1\BNA G\METHODS\SOM02.2-EPA-BG121415.M
 Quant Title : SVOA CALIBRATION

TIC Library : C:\DATABASE\NIST02.L
 TIC Integration Parameters: LSCINT.P

 Peak Number 6 1H-Cyclopropa[l]phenanthren... Concentration Rank 6

R.T.	EstConc	Area	Relative to ISTD	R.T.
18.34	2.53 ng/ul	42528	Phenanthrene-d10	17.46

Hit#	of	Tentative ID	MW	MolForm	CAS#	Qual
1	5	1H-Cyclopropa[l]phenanthrene, 1a, ...	192	C15H12	000949-41-7	94
2		Anthracene, 2-methyl-	192	C15H12	000613-12-7	93
3		Phenanthrene, 2-methyl-	192	C15H12	002531-84-2	93
4		Anthracene, 1-methyl-	192	C15H12	000610-48-0	93
5		Phenanthrene, 1-methyl-	192	C15H12	000832-69-9	91



Data Path : Z:\HPCHEM1\BNA G\DATA\BG122215\
 Data File : BG020461.D
 Acq On : 24 Dec 2015 2:42
 Operator : UM/SJ
 Sample : G4849-09DL 20X
 Misc :
 ALS Vial : 51 Sample Multiplier: 1

Instrument :
 BNA_G
 ClientSampleID :
 D9N73MEDL

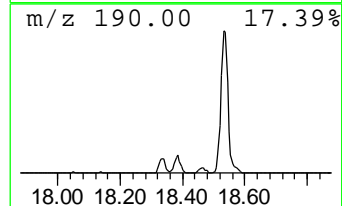
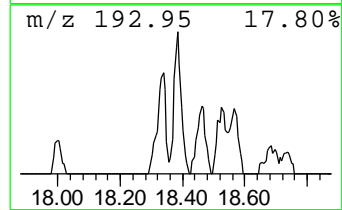
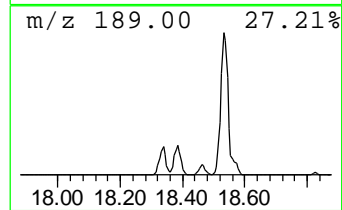
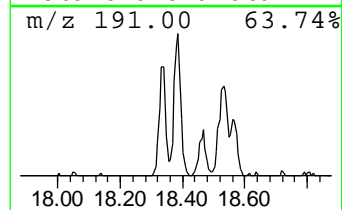
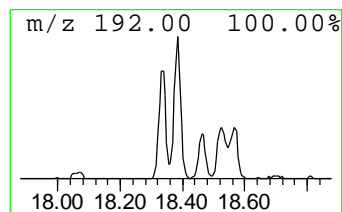
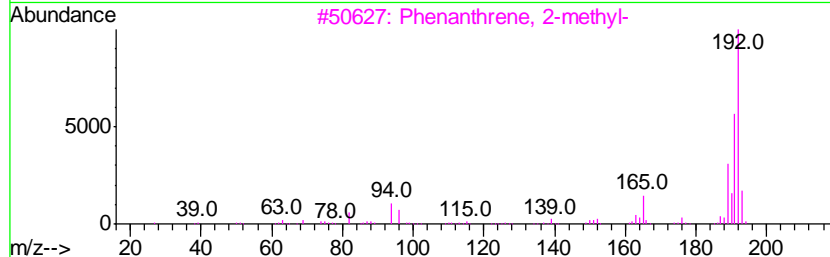
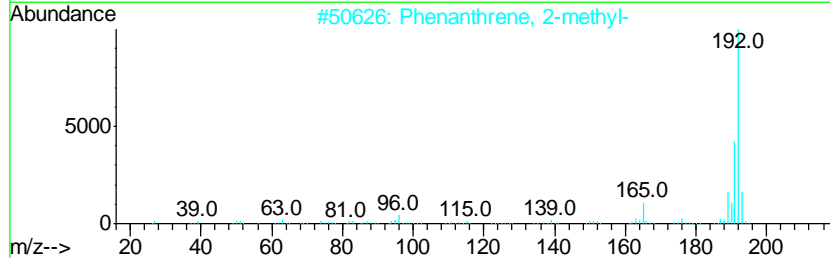
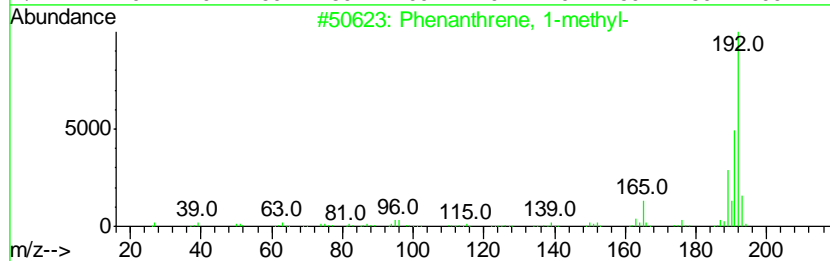
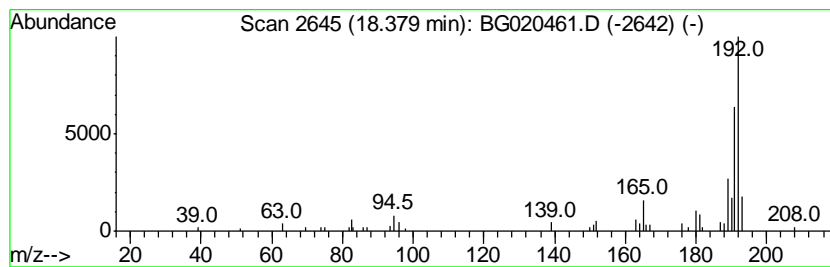
Quant Method : Z:\HPCHEM1\BNA G\METHODS\SOM02.2-EPA-BG121415.M
 Quant Title : SVOA CALIBRATION

TIC Library : C:\DATABASE\NIST02.L
 TIC Integration Parameters: LSCINT.P

 Peak Number 7 Phenanthrene, 1-methyl- Concentration Rank 3

R.T.	EstConc	Area	Relative to ISTD	R.T.
18.38	3.43 ng/ul	57768	Phenanthrene-d10	17.46

Hit#	of	Tentative ID	MW	MolForm	CAS#	Qual
1	5	Phenanthrene, 1-methyl-	192	C15H12	000832-69-9	97
2		Phenanthrene, 2-methyl-	192	C15H12	002531-84-2	95
3		Phenanthrene, 2-methyl-	192	C15H12	002531-84-2	95
4		Phenanthrene, 2-methyl-	192	C15H12	002531-84-2	95
5		1H-Cyclopropa[1]phenanthrene, 1a, ...	192	C15H12	000949-41-7	94



Data Path : Z:\HPCHEM1\BNA G\DATA\BG122215\
 Data File : BG020461.D
 Acq On : 24 Dec 2015 2:42
 Operator : UM/SJ
 Sample : G4849-09DL 20X
 Misc :
 ALS Vial : 51 Sample Multiplier: 1

Instrument :
 BNA_G
 ClientSampleID :
 D9N73MEDL

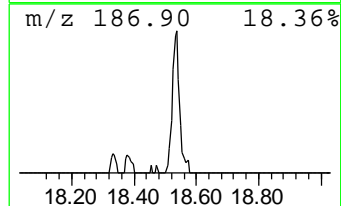
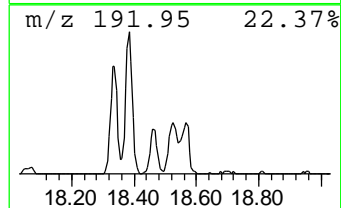
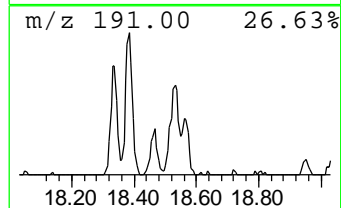
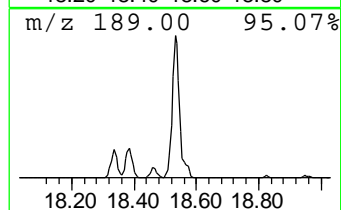
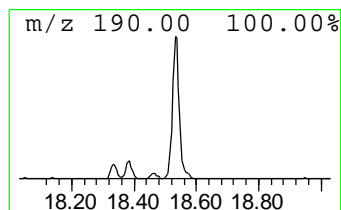
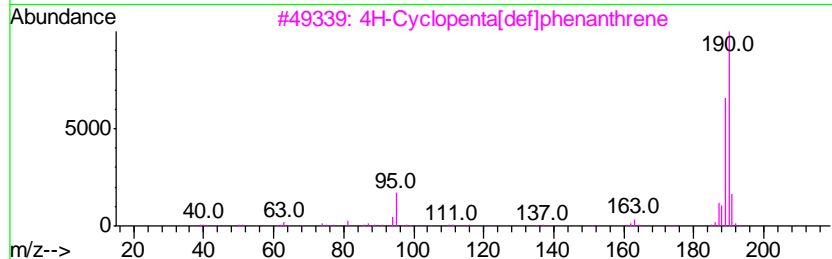
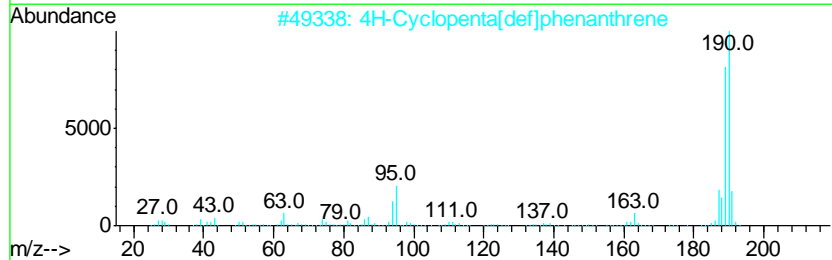
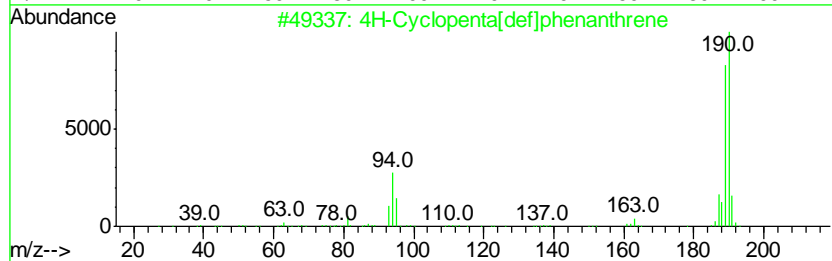
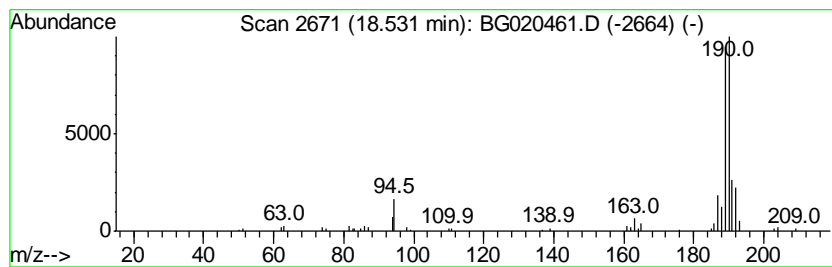
Quant Method : Z:\HPCHEM1\BNA G\METHODS\SOM02.2-EPA-BG121415.M
 Quant Title : SVOA CALIBRATION

TIC Library : C:\DATABASE\NIST02.L
 TIC Integration Parameters: LSCINT.P

 Peak Number 8 4H-Cyclopenta[def]phenanthrene Concentration Rank 2

R.T.	EstConc	Area	Relative to ISTD	R.T.
18.53	5.88 ng/ul	98893	Phenanthrene-d10	17.46

Hit#	of	Tentative ID	MW	MolForm	CAS#	Qual
1	5	4H-Cyclopenta[def]phenanthrene	190	C15H10	000203-64-5	87
2		4H-Cyclopenta[def]phenanthrene	190	C15H10	000203-64-5	76
3		4H-Cyclopenta[def]phenanthrene	190	C15H10	000203-64-5	74
4		Methyl diselenide	190	C2H6Se2	007101-31-7	55
5		2,2'-Bis(4,5-dimethylimidazole)	190	C10H14N4	069286-06-2	45



Data Path : Z:\HPCHEM1\BNA G\DATA\BG122215\
 Data File : BG020461.D
 Acq On : 24 Dec 2015 2:42
 Operator : UM/SJ
 Sample : G4849-09DL 20X
 Misc :
 ALS Vial : 51 Sample Multiplier: 1

Instrument :
 BNA_G
 ClientSampleID :
 D9N73MEDL

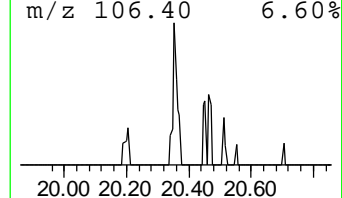
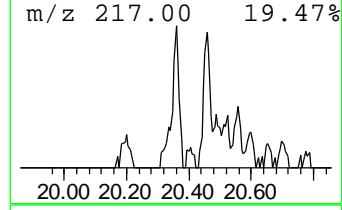
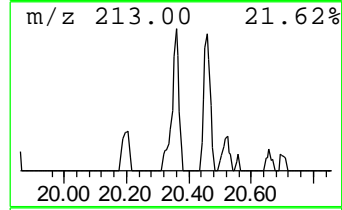
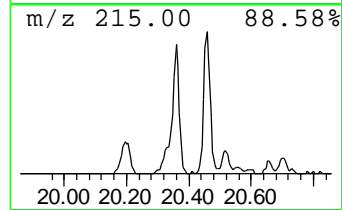
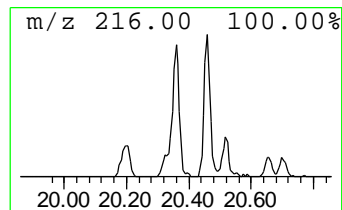
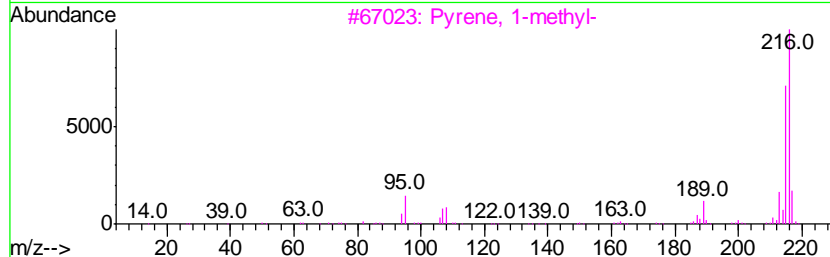
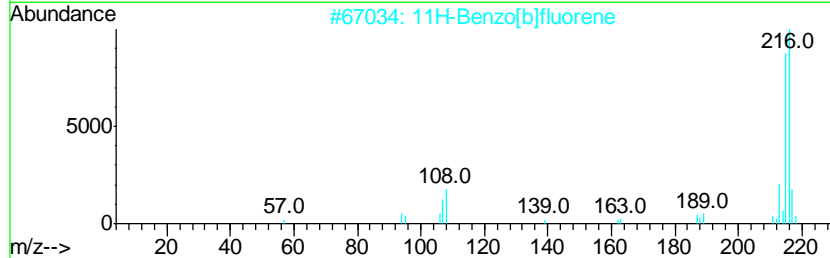
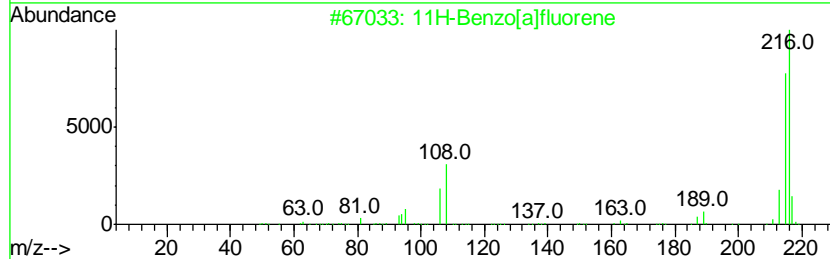
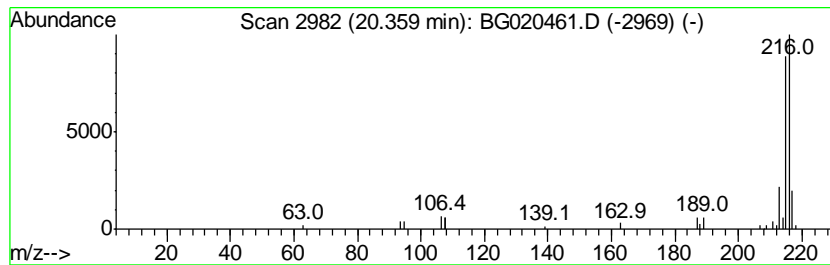
Quant Method : Z:\HPCHEM1\BNA G\METHODS\SOM02.2-EPA-BG121415.M
 Quant Title : SVOA CALIBRATION

TIC Library : C:\DATABASE\NIST02.L
 TIC Integration Parameters: LSCINT.P

 Peak Number 9 11H-Benzo[a]fluorene Concentration Rank 8

R.T.	EstConc	Area	Relative to ISTD	R.T.
20.36	2.14 ng/ul	55614	Chrysene-d12	21.73

Hit#	of	Tentative ID	MW	MolForm	CAS#	Qual
1	5	11H-Benzo[a]fluorene	216	C17H12	000238-84-6	91
2		11H-Benzo[b]fluorene	216	C17H12	000243-17-4	91
3		Pyrene, 1-methyl-	216	C17H12	002381-21-7	91
4		11H-Benzo[b]fluorene	216	C17H12	000243-17-4	90
5		Fluoranthene, 2-methyl-	216	C17H12	033543-31-6	90



Data Path : Z:\HPCHEM1\BNA_G\DATA\BG122215\
 Data File : BG020461.D
 Acq On : 24 Dec 2015 2:42
 Operator : UM/SJ
 Sample : G4849-09DL 20X
 Misc :
 ALS Vial : 51 Sample Multiplier: 1

Instrument :
 BNA_G
 ClientSampleId :
 D9N73MEDL

Quant Method : Z:\HPCHEM1\BNA_G\METHODS\SOM02.2-EPA-BG121415.M
 Quant Title : SVOA CALIBRATION

TIC Library : C:\DATABASE\NIST02.L
 TIC Integration Parameters: LSCINT.P

TIC Top Hit name	RT	EstConc	Units	Response	--Internal Standard--			
					#	RT	Resp	Conc
(DEL) Alkane: Cyc...	3.10	2.9	ng/ul	14662	1	8.08	101170	20.0
Naphthalene, 1-me...	12.77	6.6	ng/ul	53799	2	10.90	163861	20.0
Naphthalene, 1,4-...	14.04	2.0	ng/ul	27712	3	14.72	276028	20.0
2,4,6-Cycloheptat...	16.20	2.5	ng/ul	41490	4	17.46	336411	20.0
Dibenzothiophene	17.28	2.9	ng/ul	48155	4	17.46	336411	20.0
1H-Cyclopropa[1]p...	18.34	2.5	ng/ul	42528	4	17.46	336411	20.0
Phenanthrene, 1-m...	18.38	3.4	ng/ul	57768	4	17.46	336411	20.0
4H-Cyclopenta[def...	18.53	5.9	ng/ul	98893	4	17.46	336411	20.0
11H-Benzo[a]fluorene	20.36	2.1	ng/ul	55614	5	21.73	520940	20.0