

Data Path : Z:\svoasrv\HPCHEM1\BNA_G\Data\BG122223\
 Data File : BG060138.D
 Acq On : 22 Dec 2023 14:50
 Operator : MA/JU
 Sample : 05898-11
 Misc :
 ALS Vial : 9 Sample Multiplier: 1

Instrument :
 BNA_G
 ClientSampleId :
 GHL-SS-68a

Quant Time: Dec 22 15:29:41 2023
 Quant Method : Z:\svoasrv\HPCHEM1\BNA_G\Methods\8270-BG122123.M
 Quant Title : ASP BNA STANDARDS FOR 5 POINT CALIBRATION
 QLast Update : Fri Dec 22 03:42:04 2023
 Response via : Initial Calibration

Compound	R.T.	QIon	Response	Conc	Units	Dev(Min)
Internal Standards						
1) 1,4-Dichlorobenzene-d4	7.941	152	171837	20.000	ng	# 0.00
21) Naphthalene-d8	10.744	136	813239	20.000	ng	0.00
39) Acenaphthene-d10	14.575	164	694766	20.000	ng	0.00
64) Phenanthrene-d10	17.325	188	1886619	20.000	ng	0.00
76) Chrysene-d12	21.590	240	1415680	20.000	ng	0.00
86) Perylene-d12	24.769	264	1423600	20.000	ng	0.00
System Monitoring Compounds						
5) 2-Fluorophenol	5.515	112	1468515	134.660	ng	0.00
7) Phenol-d6	7.107	99	2376739	129.500	ng	0.00
23) Nitrobenzene-d5	9.105	82	1360343	81.944	ng	0.00
42) 2,4,6-Tribromophenol	16.067	330	1077131	115.146	ng	0.00
45) 2-Fluorobiphenyl	13.200	172	3531469	76.323	ng	0.00
79) Terphenyl-d14	19.951	244	5410703	69.160	ng	0.00

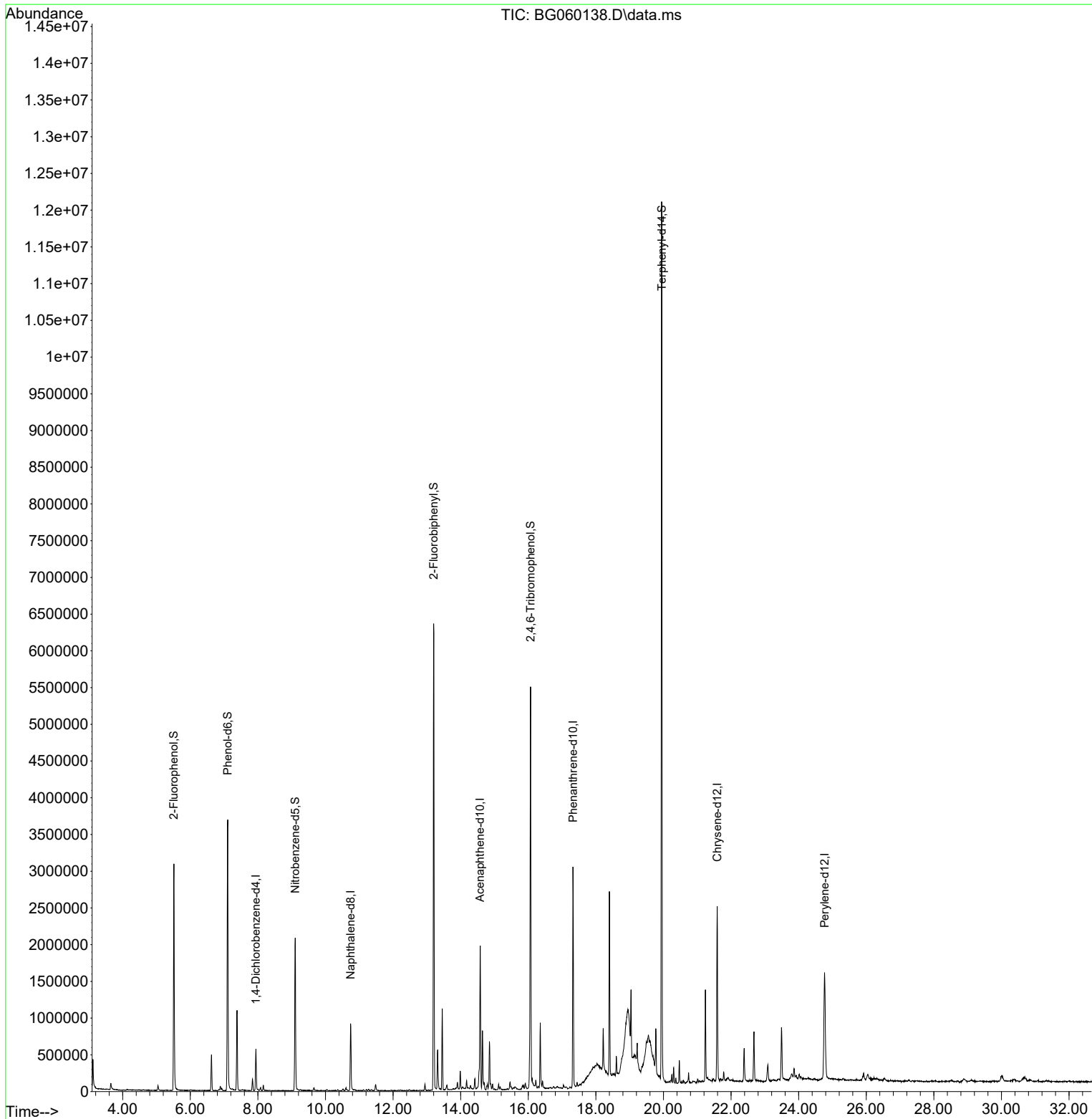
Target Compounds Qvalue

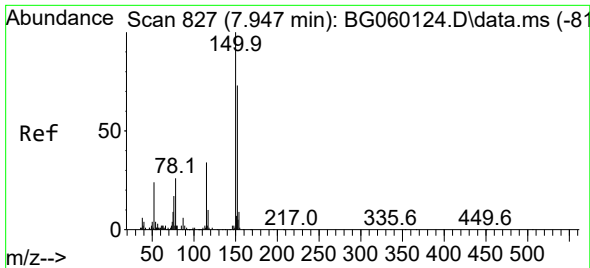
(#) = qualifier out of range (m) = manual integration (+) = signals summed

Data Path : Z:\svoasrv\HPCHEM1\BNA_G\Data\BG122223\
 Data File : BG060138.D
 Acq On : 22 Dec 2023 14:50
 Operator : MA/JU
 Sample : 05898-11
 Misc :
 ALS Vial : 9 Sample Multiplier: 1

Instrument :
 BNA_G
 ClientSampleId :
 GHl-SS-68a

Quant Time: Dec 22 15:29:41 2023
 Quant Method : Z:\svoasrv\HPCHEM1\BNA_G\Methods\8270-BG122123.M
 Quant Title : ASP BNA STANDARDS FOR 5 POINT CALIBRATION
 QLast Update : Fri Dec 22 03:42:04 2023
 Response via : Initial Calibration

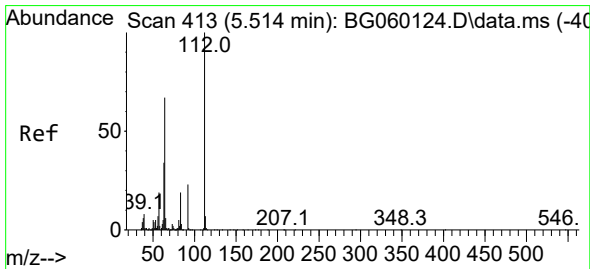
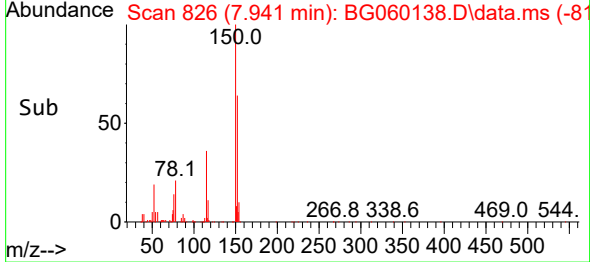
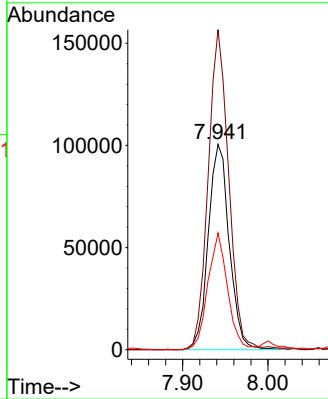
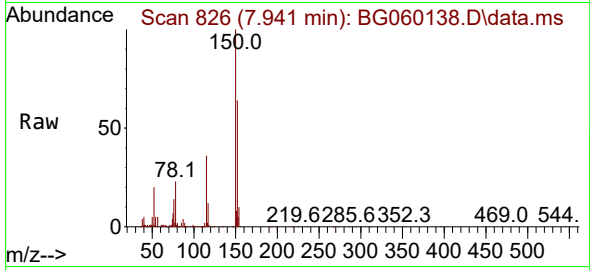




#1
 1,4-Dichlorobenzene-d4
 Concen: 20.000 ng
 RT: 7.941 min Scan# 81
 Delta R.T. -0.006 min
 Lab File: BG060138.D
 Acq: 22 Dec 2023 14:50

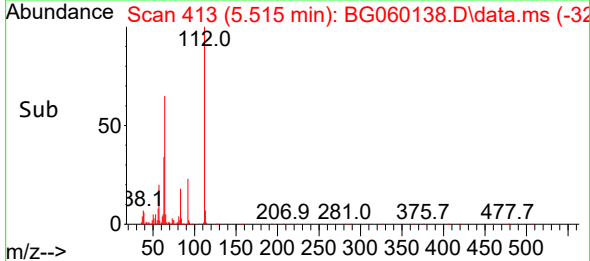
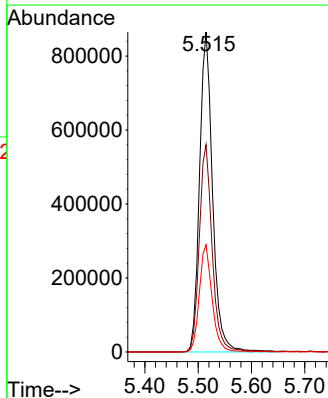
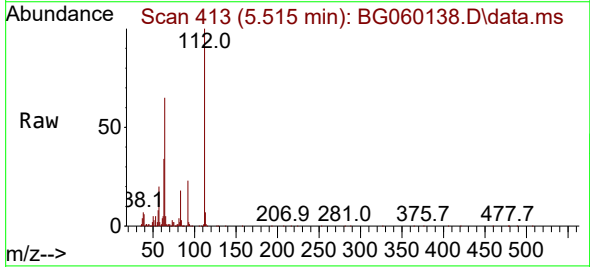
Instrument :
 BNA_G
 ClientSampleId :
 GHL-SS-68a

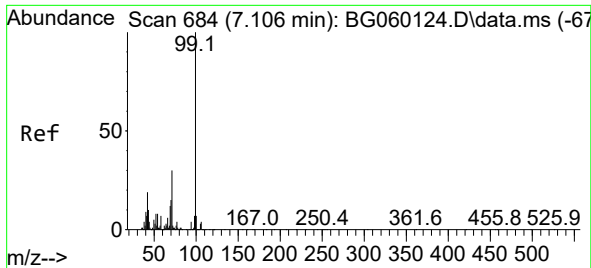
Tgt Ion:152 Resp: 171837
 Ion Ratio Lower Upper
 152 100
 150 155.8 109.4 164.0
 115 56.8 36.5 54.7#



#5
 2-Fluorophenol
 Concen: 134.660 ng
 RT: 5.515 min Scan# 413
 Delta R.T. 0.001 min
 Lab File: BG060138.D
 Acq: 22 Dec 2023 14:50

Tgt Ion:112 Resp: 1468515
 Ion Ratio Lower Upper
 112 100
 64 64.8 53.3 79.9
 63 33.5 27.1 40.7



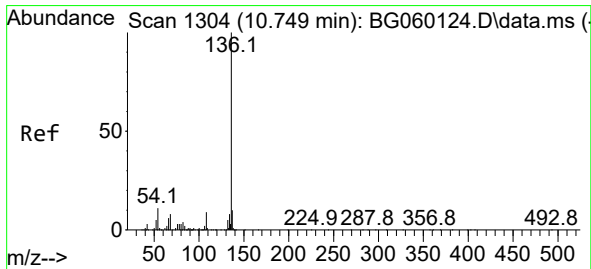
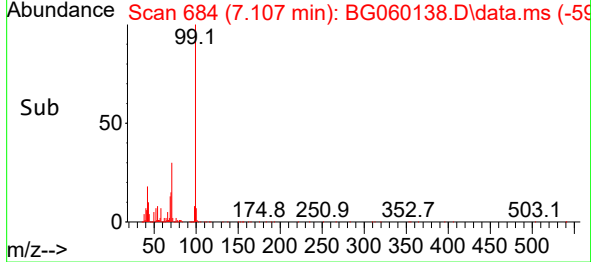
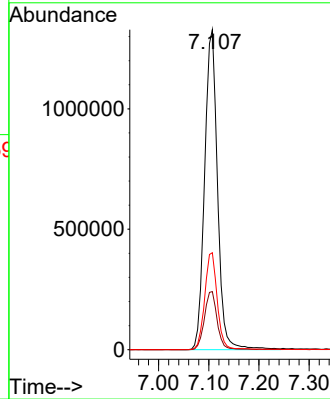
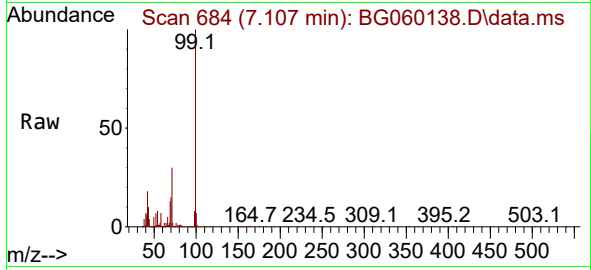


#7
 Phenol-d6
 Concen: 129.500 ng
 RT: 7.107 min Scan# 684
 Delta R.T. 0.001 min
 Lab File: BG060138.D
 Acq: 22 Dec 2023 14:50

Instrument :
 BNA_G
 ClientSampleId :
 GHL-SS-68a

Tgt Ion: 99 Resp: 2376739

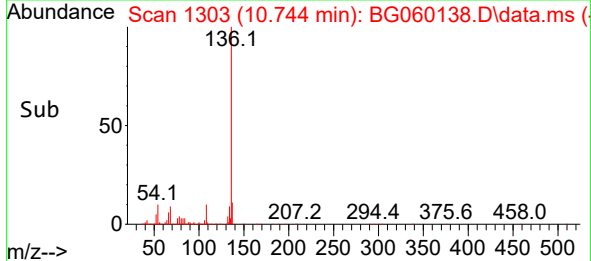
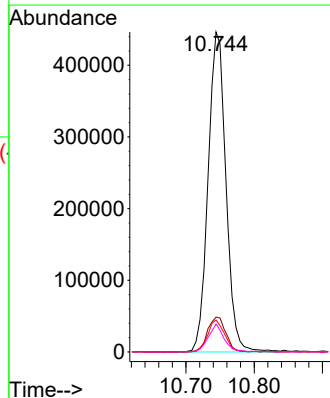
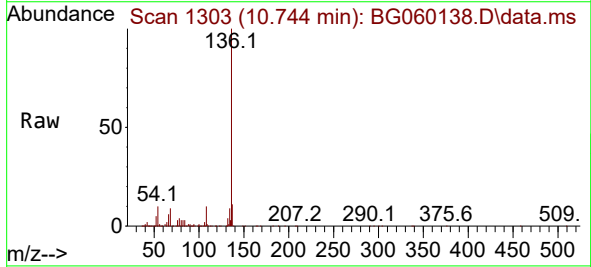
Ion	Ratio	Lower	Upper
99	100		
42	18.1	15.2	22.8
71	30.3	24.2	36.2

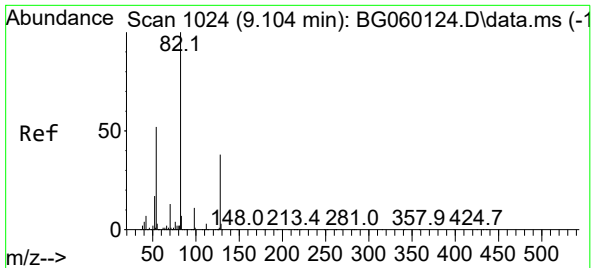


#21
 Naphthalene-d8
 Concen: 20.000 ng
 RT: 10.744 min Scan# 1303
 Delta R.T. -0.005 min
 Lab File: BG060138.D
 Acq: 22 Dec 2023 14:50

Tgt Ion: 136 Resp: 813239

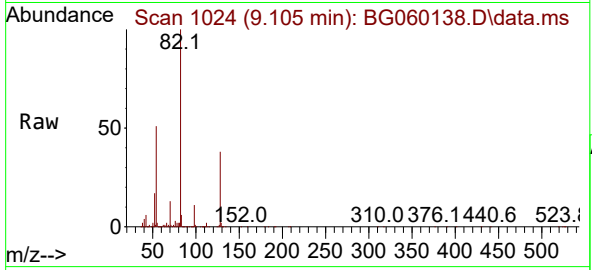
Ion	Ratio	Lower	Upper
136	100		
137	10.9	8.1	12.1
54	10.0	8.7	13.1
68	8.7	6.2	9.4



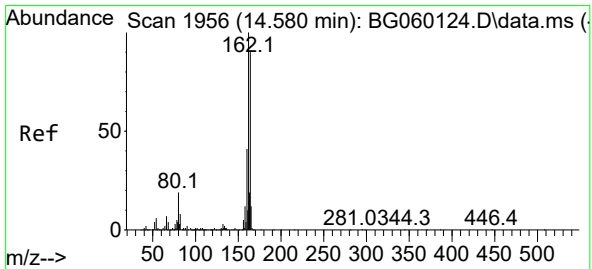
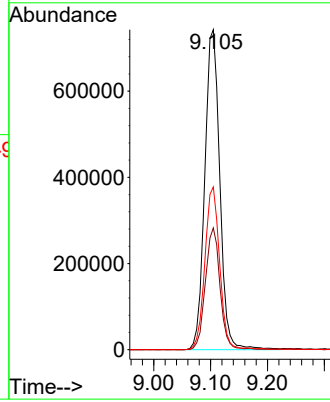
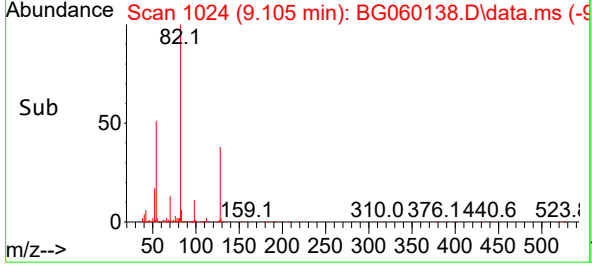


#23
 Nitrobenzene-d5
 Concen: 81.944 ng
 RT: 9.105 min Scan# 10
 Delta R.T. 0.001 min
 Lab File: BG060138.D
 Acq: 22 Dec 2023 14:50

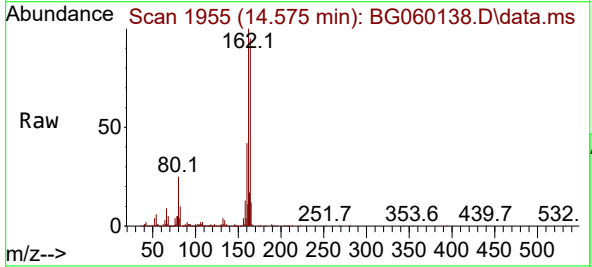
Instrument :
 BNA_G
 ClientSampleId :
 GHL-SS-68a



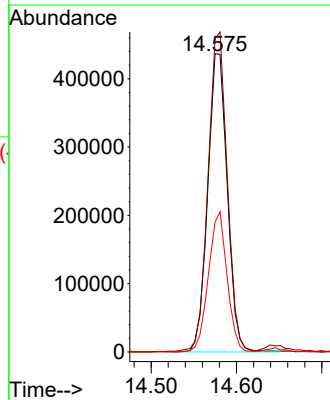
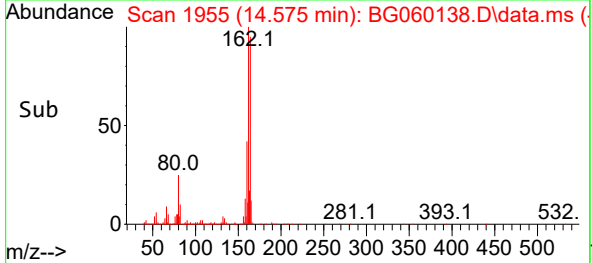
Tgt Ion: 82 Resp: 1360343
 Ion Ratio Lower Upper
 82 100
 128 38.0 30.5 45.7
 54 50.8 41.9 62.9

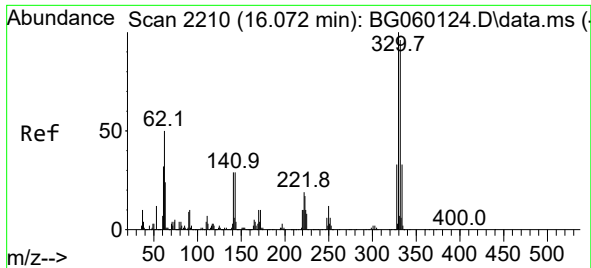


#39
 Acenaphthene-d10
 Concen: 20.000 ng
 RT: 14.575 min Scan# 1955
 Delta R.T. -0.005 min
 Lab File: BG060138.D
 Acq: 22 Dec 2023 14:50



Tgt Ion: 164 Resp: 694766
 Ion Ratio Lower Upper
 164 100
 162 104.9 88.5 132.7
 160 43.6 36.2 54.2





#42
 2,4,6-Tribromophenol
 Concen: 115.146 ng
 RT: 16.067 min Scan# 21
 Delta R.T. -0.005 min
 Lab File: BG060138.D
 Acq: 22 Dec 2023 14:50

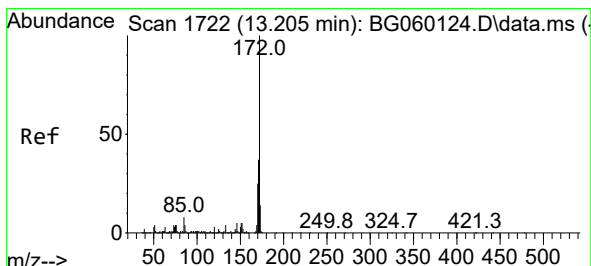
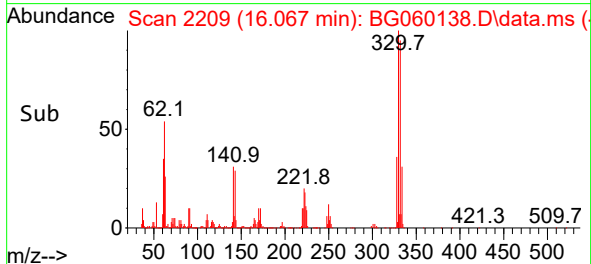
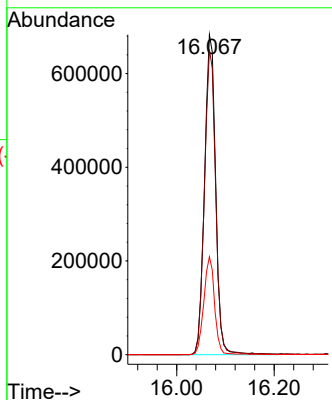
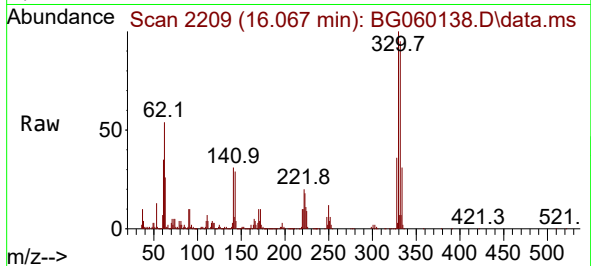
Instrument :

BNA_G

ClientSampleId :

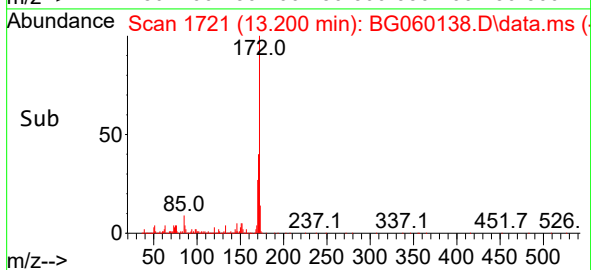
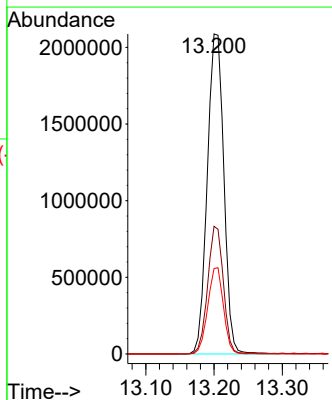
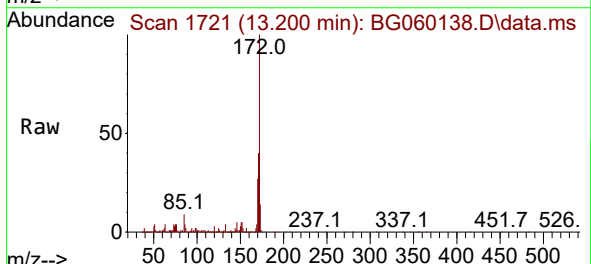
GHL-SS-68a

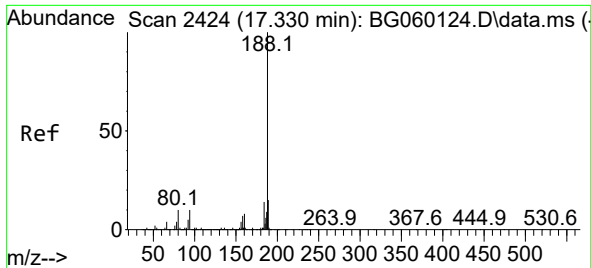
Tgt Ion:330 Resp: 1077131
 Ion Ratio Lower Upper
 330 100
 332 95.6 75.5 113.3
 141 29.6 24.7 37.1



#45
 2-Fluorobiphenyl
 Concen: 76.323 ng
 RT: 13.200 min Scan# 1721
 Delta R.T. -0.005 min
 Lab File: BG060138.D
 Acq: 22 Dec 2023 14:50

Tgt Ion:172 Resp: 3531469
 Ion Ratio Lower Upper
 172 100
 171 39.9 29.2 43.8
 170 26.7 20.1 30.1



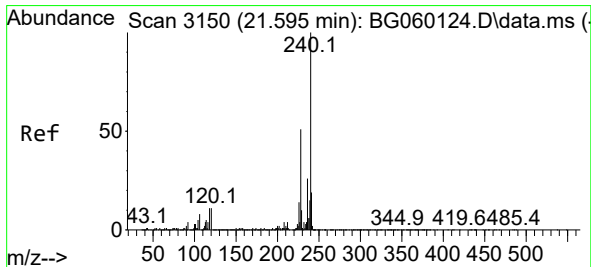
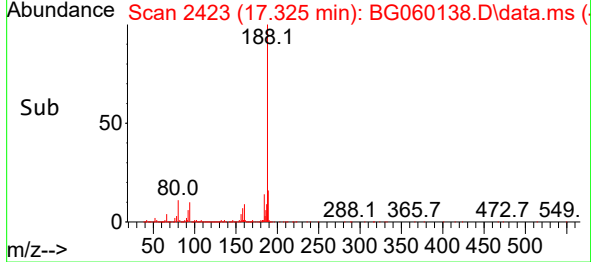
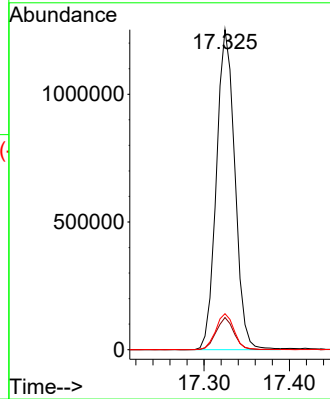
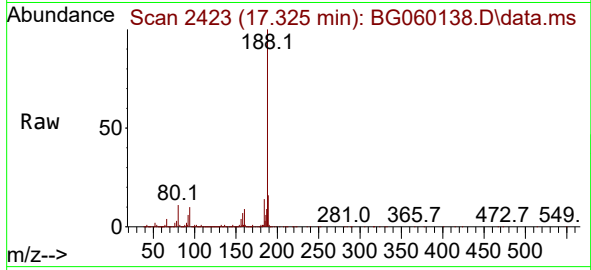


#64
 Phenanthrene-d10
 Concen: 20.000 ng
 RT: 17.325 min Scan# 24
 Delta R.T. -0.005 min
 Lab File: BG060138.D
 Acq: 22 Dec 2023 14:50

Instrument :
 BNA_G
 ClientSampleId :
 GHL-SS-68a

Tgt Ion:188 Resp: 1886619

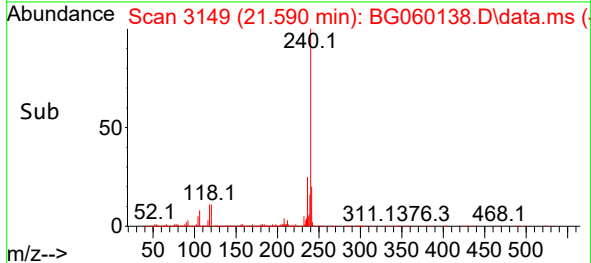
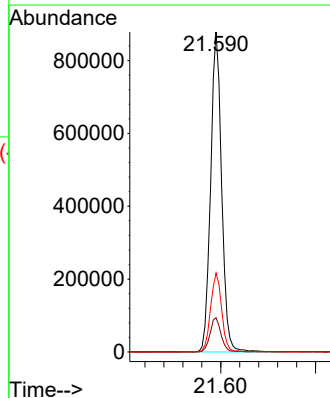
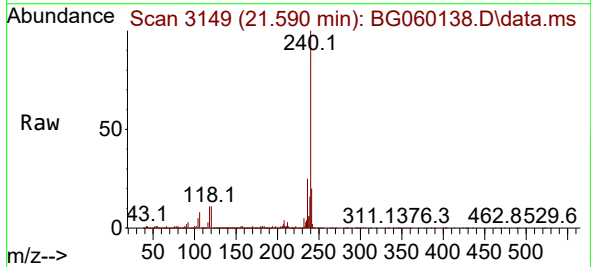
Ion	Ratio	Lower	Upper
188	100		
94	10.0	7.6	11.4
80	11.2	7.9	11.9

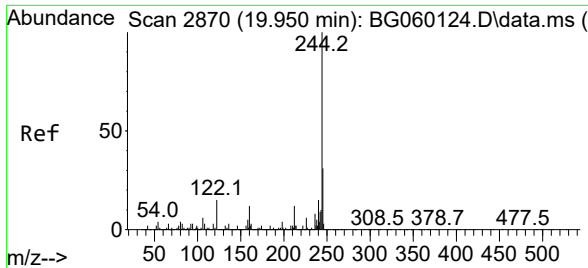


#76
 Chrysene-d12
 Concen: 20.000 ng
 RT: 21.590 min Scan# 3149
 Delta R.T. -0.005 min
 Lab File: BG060138.D
 Acq: 22 Dec 2023 14:50

Tgt Ion:240 Resp: 1415680

Ion	Ratio	Lower	Upper
240	100		
120	10.7	9.0	13.6
236	24.6	20.4	30.6



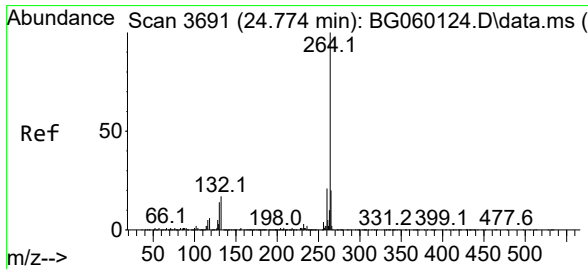
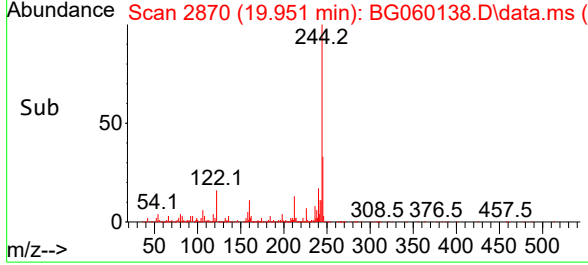
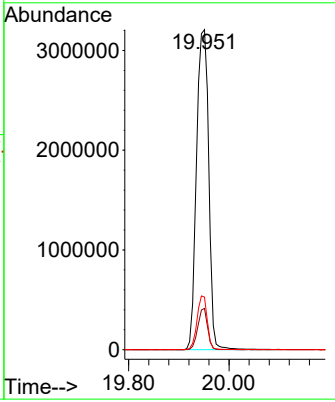
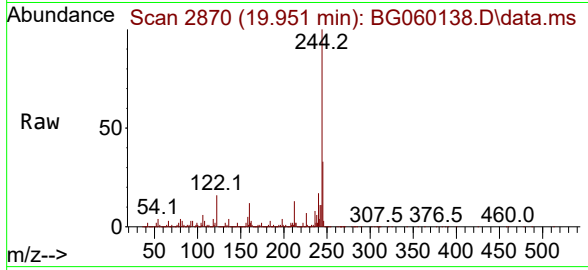


#79
 Terphenyl-d14
 Concen: 69.160 ng
 RT: 19.951 min Scan# 21
 Delta R.T. 0.001 min
 Lab File: BG060138.D
 Acq: 22 Dec 2023 14:50

Instrument :
 BNA_G
 ClientSampleId :
 GHL-SS-68a

Tgt Ion:244 Resp: 5410703

Ion	Ratio	Lower	Upper
244	100		
212	12.9	9.5	14.3
122	16.4	12.2	18.4



#86
 Perylene-d12
 Concen: 20.000 ng
 RT: 24.769 min Scan# 3690
 Delta R.T. -0.005 min
 Lab File: BG060138.D
 Acq: 22 Dec 2023 14:50

Tgt Ion:264 Resp: 1423600

Ion	Ratio	Lower	Upper
264	100		
260	23.8	17.1	25.7
265	21.7	16.0	24.0

