

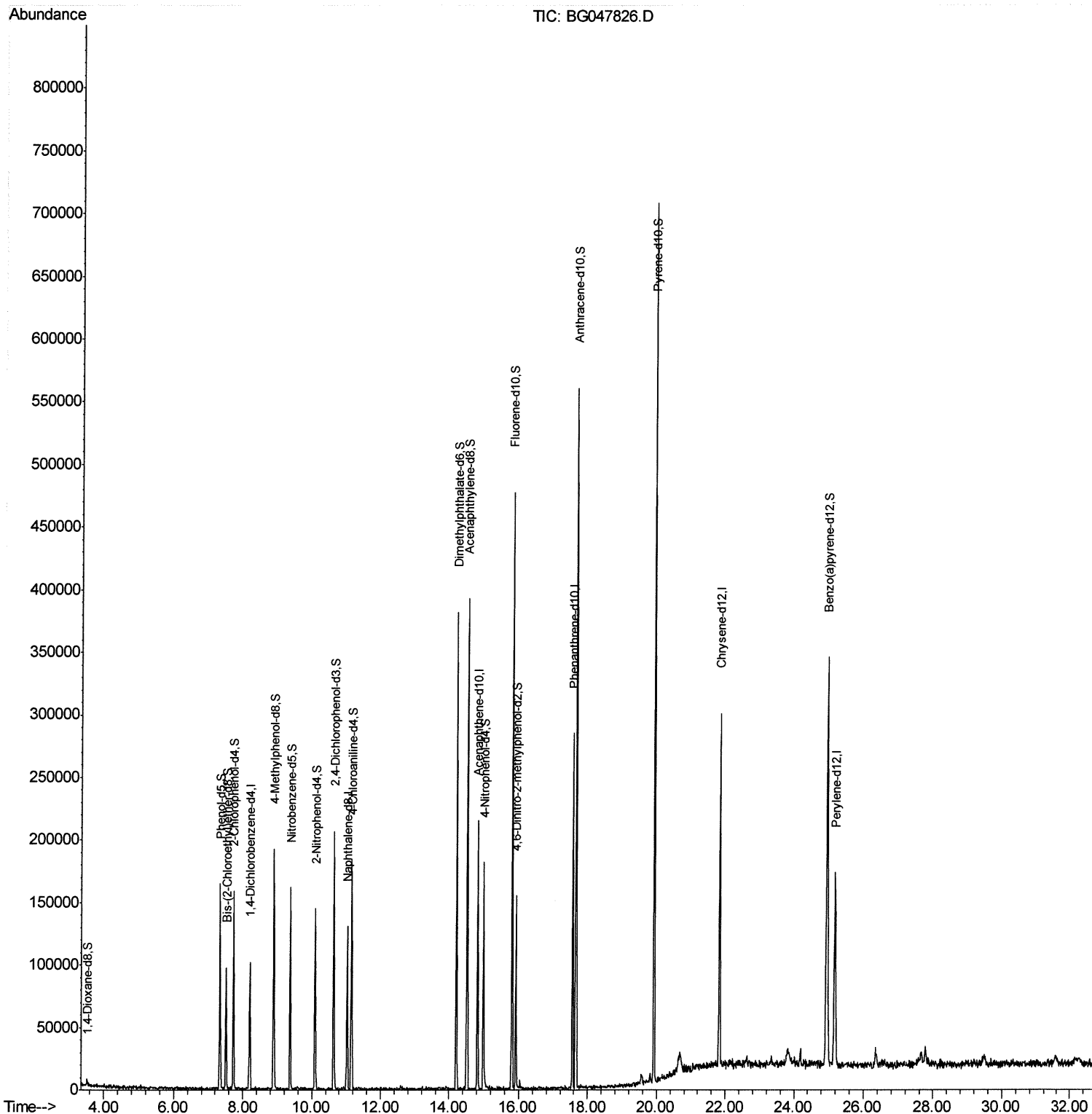
Data Path : Z:\svoasrv\HPCHEM1\BNA G\Data\BG122320\
Data File : BG047826.D
Acq On : 24 Dec 2020 10:52
Operator : CG/JU
Sample : PB133749BL
Misc :
ALS Vial : 30 Sample Multiplier: 1

Instrument :
BNA_G
ClientSampled :
SBLK49

Manual Integrations
APPROVED

mohammad
12/28/2020 1:36:00 PM

Quant Time: Dec 24 11:31:22 2020
Quant Method : Z:\SVOASRV\HPCHEM1\BNA_G\METHODS\SOM-EPA-BG120720MA.M
Quant Title : SVOA CALIBRATION
QLast Update : Wed Dec 23 13:42:29 2020
Response via : Initial Calibration

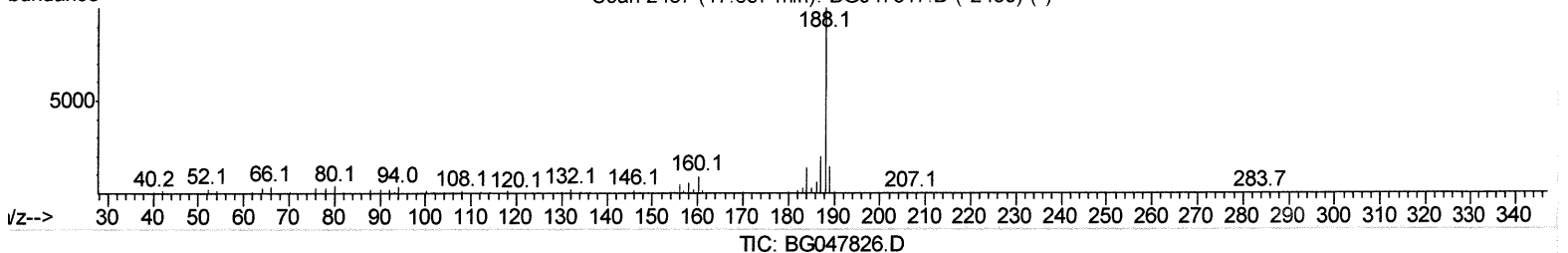
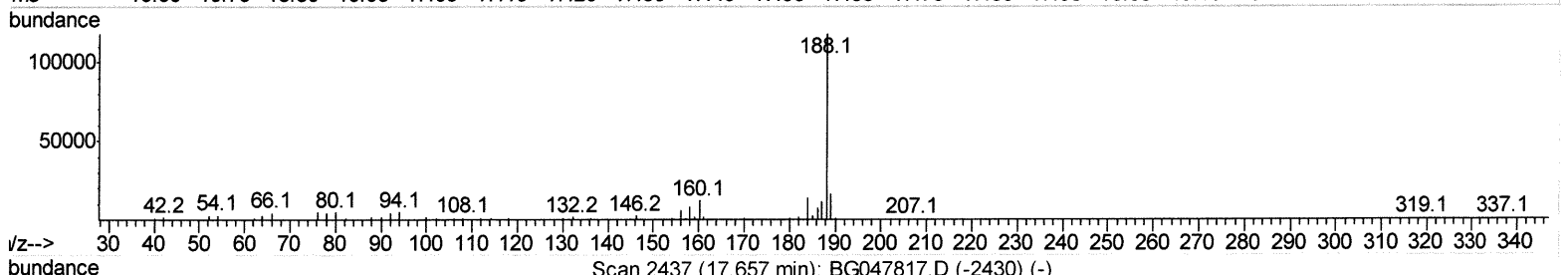
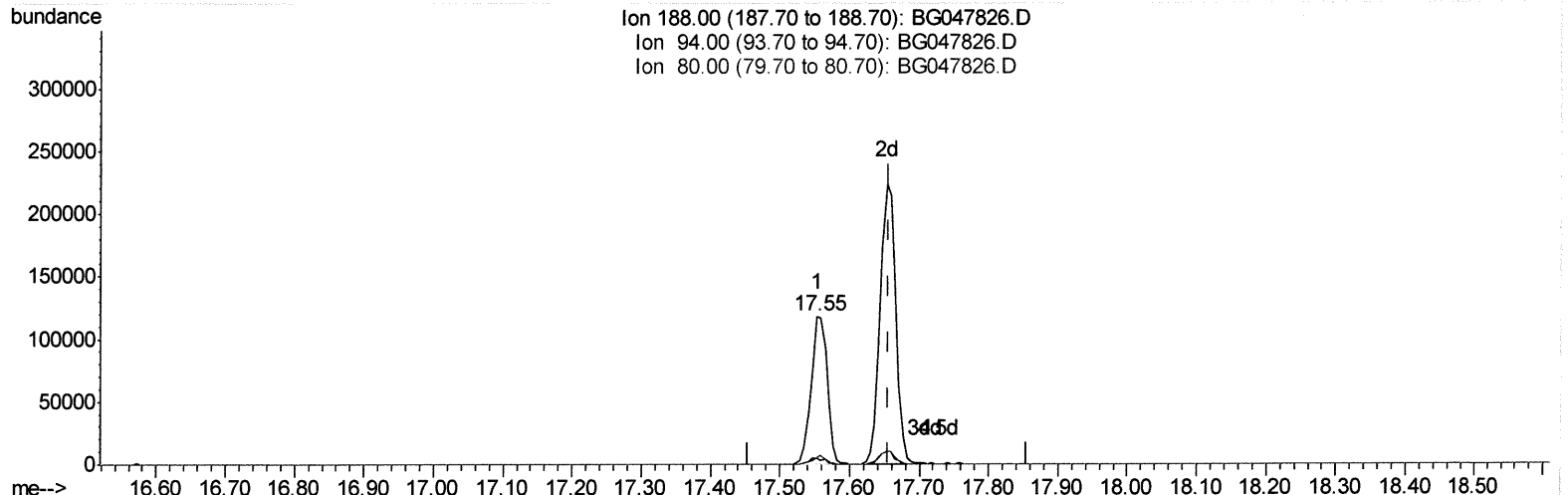


Data Path : Z:\svoasrv\HPCHEM1\BNA G\Data\BG122320\
 Data File : BG047826.D
 Acq On : 24 Dec 2020 10:52
 Operator : CG/JU
 Sample : PB133749BL
 Misc :
 ALS Vial : 30 Sample Multiplier: 1

Instrument :
 BNA_G
ClientSampled :
 SBLK49

Manual Integrations
APPROVED
 mohammad
 12/28/2020 1:36:00 PM

Quant Time: Dec 24 11:29:20 2020
 Quant Method : Z:\SVOASRV\HPCHEM1\BNA_G\METHODS\SOM-EPA-BG120720MA.M
 Quant Title : SVOA CALIBRATION
 QLast Update : Wed Dec 23 13:42:29 2020
 Response via : Initial Calibration



(71) Anthracene-d10 (S)
 17.553min (-0.103) 20.05ng/ul
 response 186409

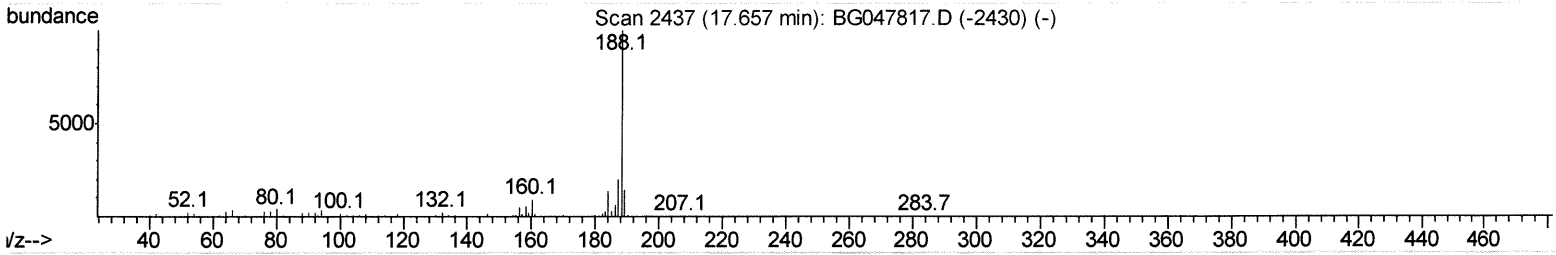
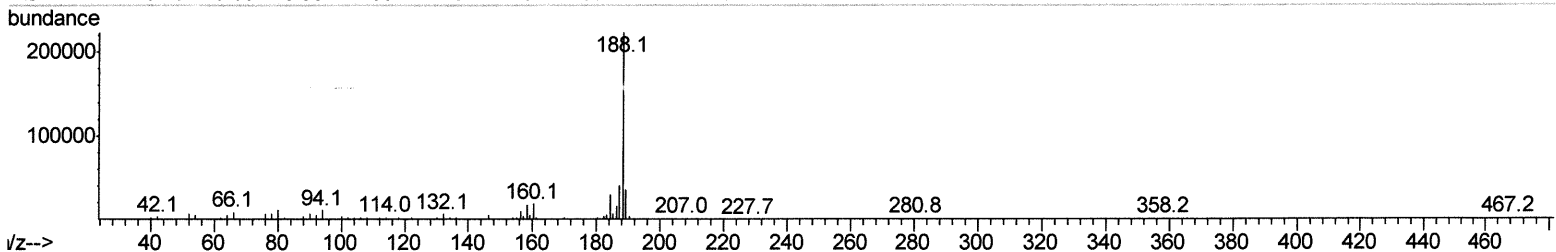
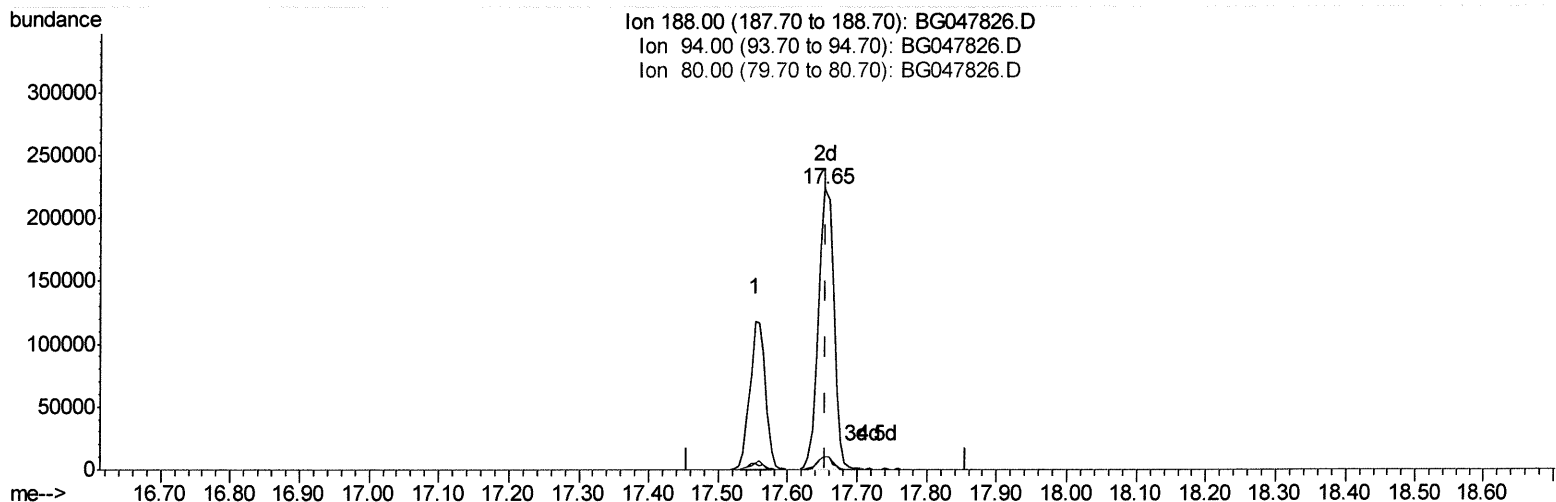
Ion	Exp%	Act%
188.00	100	100
94.00	3.90	4.05
80.00	4.00	3.97
0.00	0.00	0.00

Data Path : Z:\svoasrv\HPCHEM1\BNA G\Data\BG122320\
 Data File : BG047826.D
 Acq On : 24 Dec 2020 10:52
 Operator : CG/JU
 Sample : PB133749BL
 Misc :
 ALS Vial : 30 Sample Multiplier: 1

Instrument :
 BNA_G
ClientSampled :
 SBLK49

Manual Integrations
APPROVED
 mohammad
 12/28/2020 1:36:00 PM

Quant Time: Dec 24 11:29:20 2020
 Quant Method : Z:\SVOASRV\HPCHEM1\BNA_G\METHODS\SOM-EPA-BG120720MA.M
 Quant Title : SVOA CALIBRATION
 QLast Update : Wed Dec 23 13:42:29 2020
 Response via : Initial Calibration



TIC: BG047826.D

(71) Anthracene-d10 (S)

17.653min (-0.003) 37.26ng/ul m

response 346464

JU 12/31/20

Ion	Exp%	Act%
188.00	100	100
94.00	3.90	4.78#
80.00	4.00	4.66
0.00	0.00	0.00

Data Path : Z:\svoasrv\HPCHEM1\BNA G\Data\BG122320\
 Data File : BG047826.D
 Acq On : 24 Dec 2020 10:52
 Operator : CG/JU
 Sample : PB133749BL
 Misc :
 ALS Vial : 30 Sample Multiplier: 1

Instrument :
 BNA_G
ClientSampleId :
 SBLK49

Manual Integrations
APPROVED
 mohammad
 12/28/2020 1:36:00 PM

Quant Time: Dec 24 11:31:22 2020
 Quant Method : Z:\SVOASRV\HPCHEM1\BNA_G\METHODS\SOM-EPA-BG120720MA.M
 Quant Title : SVOA CALIBRATION
 QLast Update : Wed Dec 23 13:42:29 2020
 Response via : Initial Calibration

Internal Standards	R.T.	QIon	Response	Conc	Units	Dev(Min)
1) 1,4-Dichlorobenzene-d4	8.20	152	27156	20.00	ng/ul	0.00
18) Naphthalene-d8	11.03	136	99516	20.00	ng/ul	0.00
36) Acenaphthene-d10	14.82	164	75268	20.00	ng/ul	0.00
62) Phenanthrene-d10	17.55	188	186409	20.00	ng/ul	0.00
78) Chrysene-d12	21.83	240	179509	20.00	ng/ul	0.00
86) Perylene-d12	25.17	264	173692	20.00	ng/ul	0.00

System Monitoring Compounds

3) 1,4-Dioxane-d8	3.52	96	3510	6.88	ng/uL	0.00
5) Phenol-d5	7.34	99	77653	33.41	ng/ul	0.00
7) Bis-(2-Chloroethyl)ether-d	7.51	67	41051	34.36	ng/ul	0.00
9) 2-Chlorophenol-d4	7.72	132	57453	32.59	ng/ul	0.00
13) 4-Methylphenol-d8	8.89	113	59369	32.18	ng/ul	0.00
19) Nitrobenzene-d5	9.36	128	30051	37.04	ng/ul	0.00
22) 2-Nitrophenol-d4	10.10	143	33358	34.11	ng/ul	0.00
26) 2,4-Dichlorophenol-d3	10.63	165	70184	33.05	ng/ul	0.00
29) 4-Chloroaniline-d4	11.15	131	78513	40.26	ng/ul	0.00
44) Dimethylphthalate-d6	14.21	166	219391	33.56	ng/ul	0.00
47) Acenaphthylene-d8	14.52	160	267911	35.88	ng/ul	0.00
52) 4-Nitrophenol-d4	14.99	143	33316	34.36	ng/ul	0.00
58) Fluorene-d10	15.81	176	197772	32.86	ng/ul	0.00
63) 4,6-Dinitro-2-methylphenol	15.91	200	34626	27.44	ng/ul	0.00
71) Anthracene-d10	17.65	188	346464m	37.26	ng/ul	0.00
79) Pyrene-d10	19.93	212	391165	36.87	ng/ul	0.00
90) Benzo(a)pyrene-d12	24.94	264	389221	38.37	ng/ul	0.00

Handwritten: → 12/31/20

Target Compounds Ovalue

(#) = qualifier out of range (m) = manual integration (+) = signals summed