

Data Path : Z:\HPCHEM1\BNA G\DATA\BG122415\
 Data File : BG020497.D
 Acq On : 25 Dec 2015 7:02
 Operator : UM/SJ
 Sample : G4846-05
 Misc :
 ALS Vial : 24 Sample Multiplier: 1

Instrument :
 BNA_G
 ClientSampled :
 D9N51

Manual Integrations
 APPROVED

Sohil
 12/28/2015 6:03:54 PM

Quant Time: Dec 25 23:51:56 2015
 Quant Method : Z:\HPCHEM1\BNA G\METHODS\SOM02.2-EPA-BG122415.M
 Quant Title : SVOA CALIBRATION
 QLast Update : Fri Dec 25 03:27:34 2015
 Response via : Initial Calibration

Internal Standards	R.T.	QIon	Response	Conc	Units	Dev(Min)
1) 1,4-Dichlorobenzene-d4	8.08	152	57402	20.00	ng/ul	0.00
18) Naphthalene-d8	10.96	136	218726	20.00	ng/ul	0.06
36) Acenaphthene-d10	14.72	164	167840	20.00	ng/ul	0.00
62) Phenanthrene-d10	17.47	188	379991	20.00	ng/ul	0.00
78) Chrysene-d12	21.73	240	489563	20.00	ng/ul	0.00
86) Perylene-d12	25.00	264	473680	20.00	ng/ul	0.00

System Monitoring Compounds

3) 1,4-Dioxane-d8	3.45	96	445	0.43	ng/uL	0.00
5) Phenol-d5	7.24	99	14020	3.04	ng/ul	0.00
7) Bis-(2-Chloroethyl)ether-d	7.40	67	36791	13.48	ng/ul	0.00
9) 2-Chlorophenol-d4	7.61	132	38093	10.78	ng/ul	0.00
13) 4-Methylphenol-d8	8.79	113	28186	7.27	ng/ul	0.00
19) Nitrobenzene-d5	9.25	128	26745	15.60	ng/ul	0.00
22) 2-Nitrophenol-d4	9.99	143	30986	15.90	ng/ul	0.01
26) 2,4-Dichlorophenol-d3	10.55	165	51688	13.70	ng/ul	0.03
29) 4-Chloroaniline-d4	11.10	131	9951	2.31	ng/ul	0.07
44) Dimethylphthalate-d6	14.13	166	179673	12.99	ng/ul	0.02
47) Acenaphthylene-d8	14.41	160	214146	13.36	ng/ul	0.00
52) 4-Nitrophenol-d4	14.93	143	7304	3.17	ng/ul	0.00
58) Fluorene-d10	15.71	176	165279	13.21	ng/ul	0.00
63) 4,6-Dinitro-2-methylphenol	15.83	200	27833	11.05	ng/ul	0.01
71) Anthracene-d10	17.57	188	249980	14.05	ng/ul	0.01
79) Pyrene-d10	19.84	212	287793	13.58	ng/ul	0.00
90) Benzo(a)pyrene-d12	24.77	264	336207	14.04	ng/ul	0.00

Target Compounds

Target Compounds	R.T.	QIon	Response	Conc	Units	Ovalue
6) Phenol	7.27	94	11670	2.43	ng/ul	99
11) 2-Methylphenol	8.52	108	74207	19.93	ng/ul	95
14) Acetophenone	8.92	105	40185	6.47	ng/ul#	92
16) 4-Methylphenol	8.87	108	140482	34.79	ng/ul	94
24) 2,4-Dimethylphenol	10.09	107	461457	105.50	ng/ul	97
28) Naphthalene	11.06	128	11110443	955.55	ng/ul#	38
34) 2-Methylnaphthalene	12.58	142	2066003	240.14	ng/ul	99
41) 1,1'-Biphenyl	13.55	154	585624	45.21	ng/ul	97
48) Acenaphthylene	14.44	152	256059	15.20	ng/ul	97
50) Acenaphthene	14.81	153	2124329	186.51	ng/ul#	91
54) Dibenzofuran	15.13	168	1788796	105.56	ng/ul	90
59) Fluorene	15.77	166	1317373	95.93	ng/ul	98
70) Phenanthrene	17.52	178	2032958m	96.15	ng/ul	
72) Anthracene	17.60	178	129881	6.01	ng/ul	98
75) Carbazole	17.90	167	2577521	141.47	ng/ul#	84
77) Fluoranthene	19.51	202	364316	13.70	ng/ul#	97
80) Pyrene	19.87	202	210684	7.61	ng/ul	97

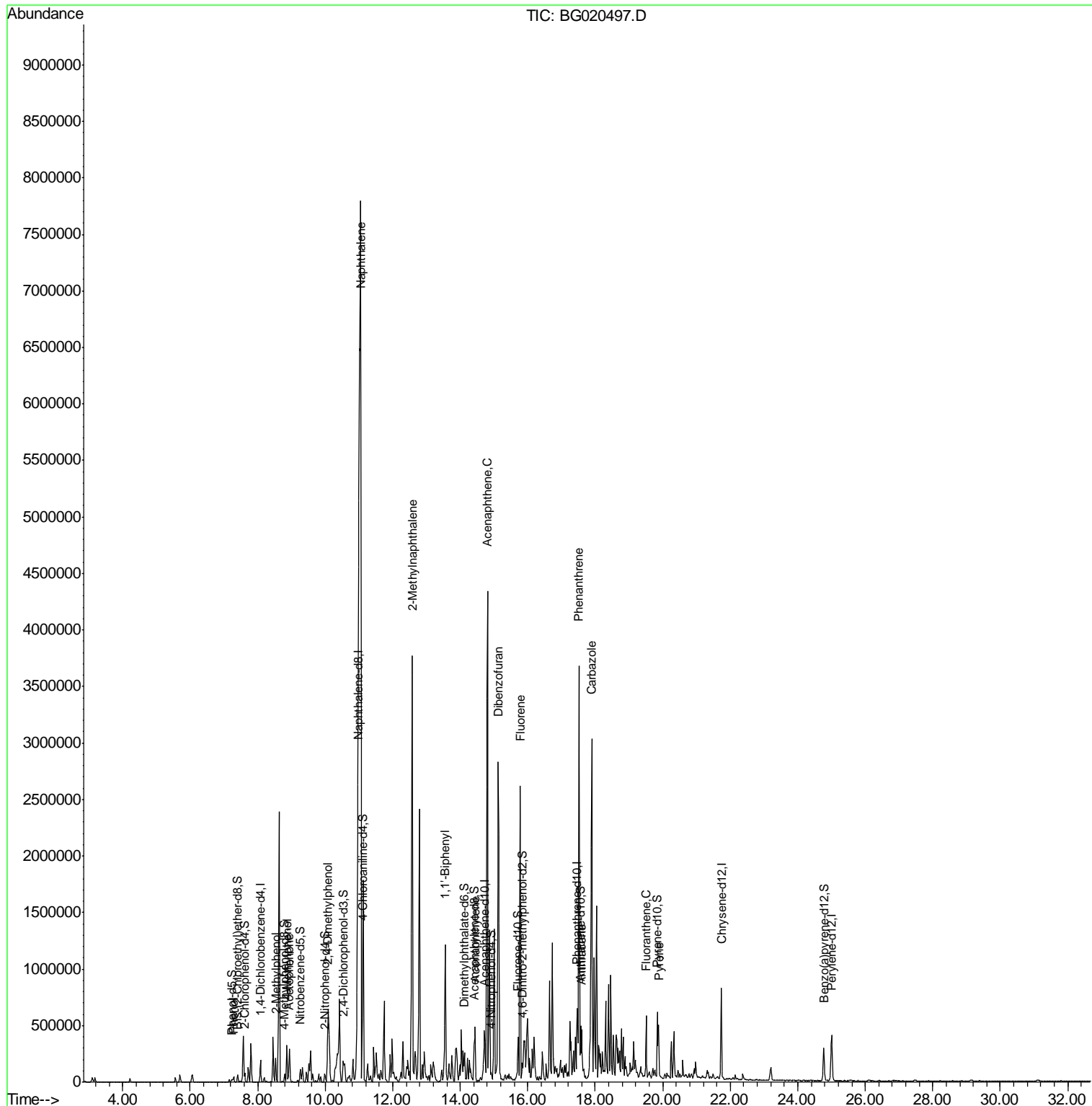
(#) = qualifier out of range (m) = manual integration (+) = signals summed

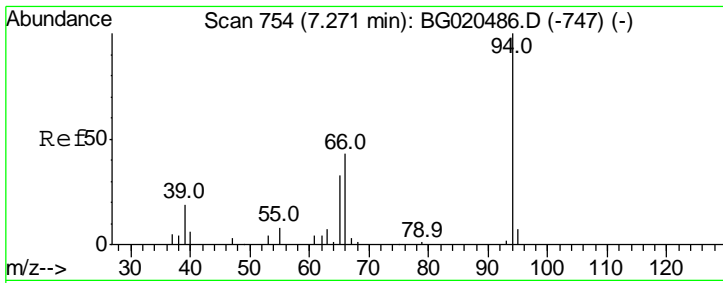
Data Path : Z:\HPCHEM1\BNA G\DATA\BG122415\
 Data File : BG020497.D
 Acq On : 25 Dec 2015 7:02
 Operator : UM/SJ
 Sample : G4846-05
 Misc :
 ALS Vial : 24 Sample Multiplier: 1

Instrument :
 BNA_G
Client Sampled :
 D9N51

Manual Integrations
APPROVED
 Sohil
 12/28/2015 6:03:54 PM

Quant Time: Dec 25 23:51:56 2015
 Quant Method : Z:\HPCHEM1\BNA G\METHODS\SOM02.2-EPA-BG122415.M
 Quant Title : SVOA CALIBRATION
 QLast Update : Fri Dec 25 03:27:34 2015
 Response via : Initial Calibration



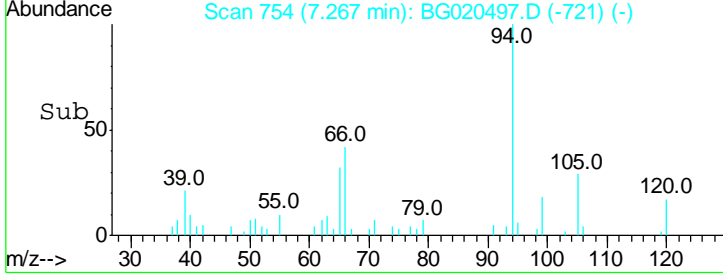
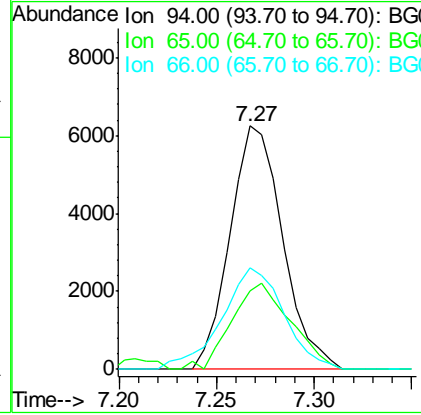
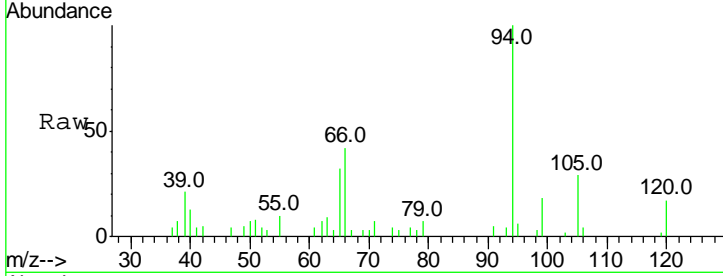


#6
 Phenol
 Concen: 2.43 ng/ul
 RT: 7.27 min Scan# 754
 Delta R.T. -0.00 min
 Lab File: BG020497.D
 Acq: 25 Dec 2015 7:02

Instrument :
 BNA_G
ClientSampled :
 D9N51

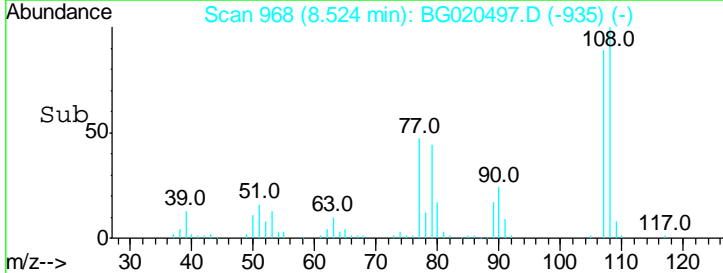
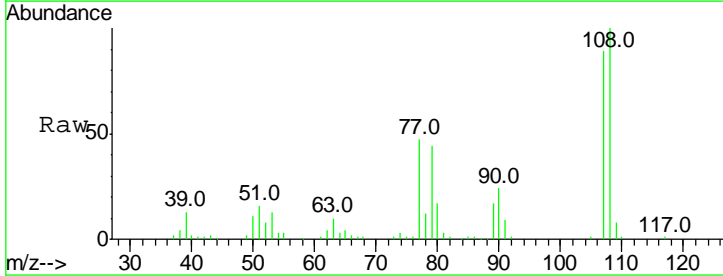
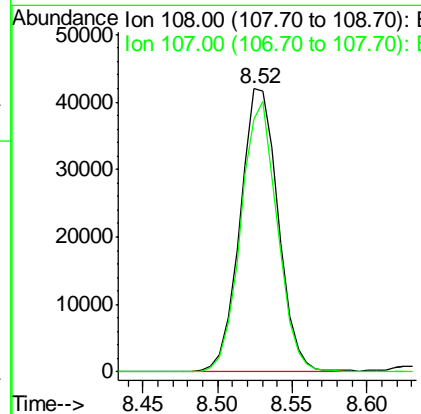
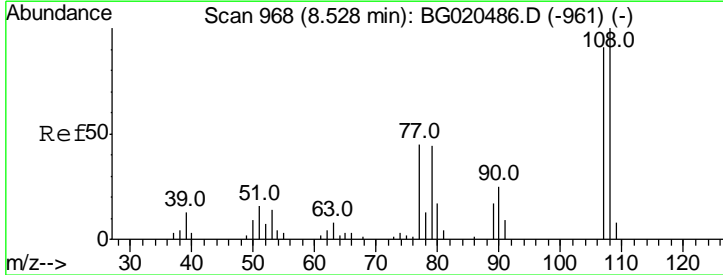
Tgt Ion	Resp	Lower	Upper
94	11670		
94	100		
65	32.2	26.3	39.5
66	41.9	33.3	49.9

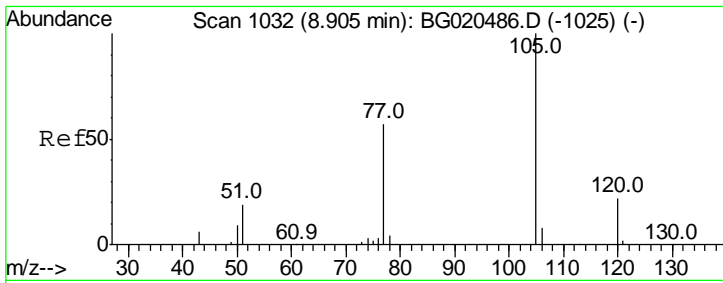
Manual Integrations
APPROVED
 Sohil
 12/28/2015 6:03:54 PM



#11
 2-Methylphenol
 Concen: 19.93 ng/ul
 RT: 8.52 min Scan# 968
 Delta R.T. -0.00 min
 Lab File: BG020497.D
 Acq: 25 Dec 2015 7:02

Tgt Ion	Resp	Lower	Upper
108	74207		
108	100		
107	89.1	67.5	101.3



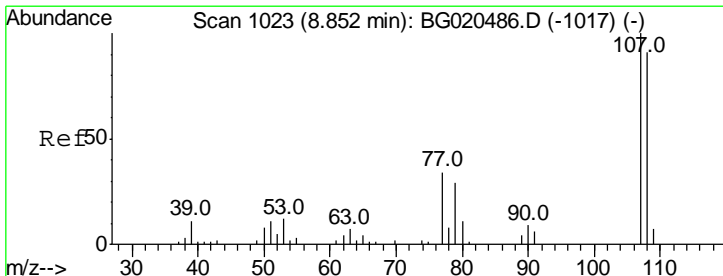
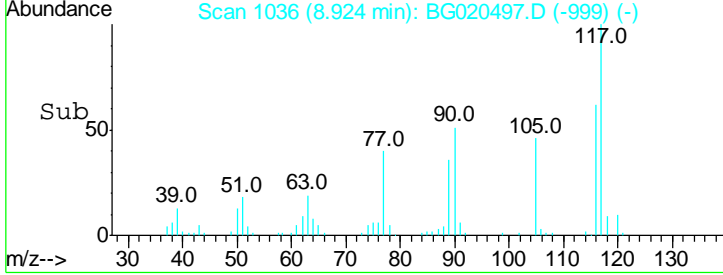
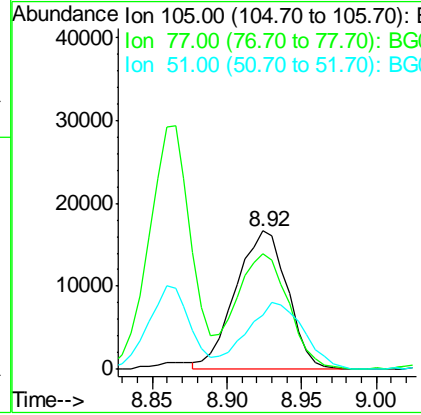
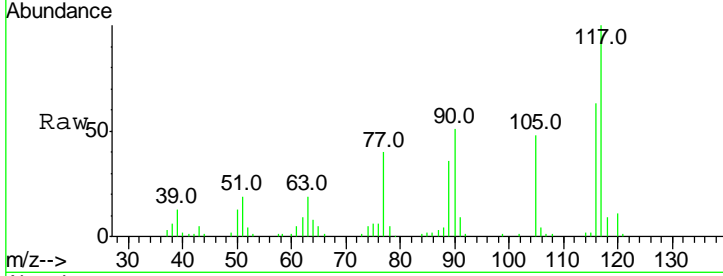


#14
 Acetophenone
 Concen: 6.47 ng/ul
 RT: 8.92 min Scan# 1036
 Delta R.T. 0.02 min
 Lab File: BG020497.D
 Acq: 25 Dec 2015 7:02

Instrument :
 BNA_G
 ClientSampled :
 D9N51

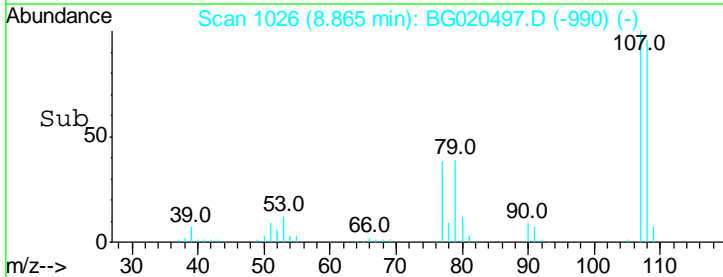
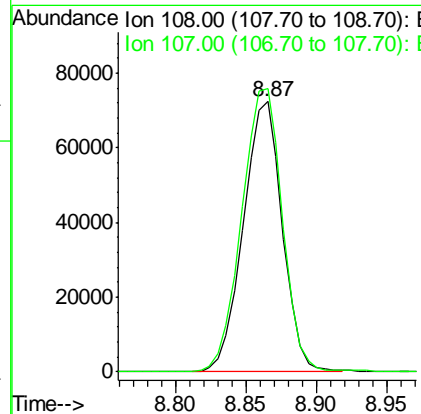
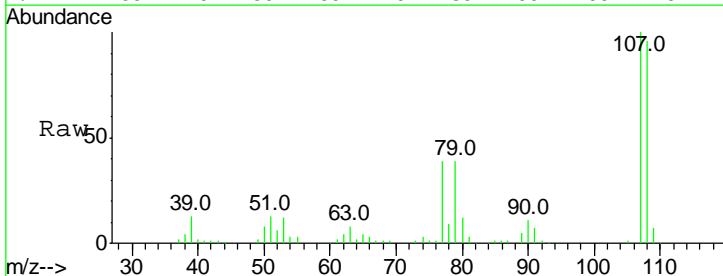
Tgt Ion	Resp	Lower	Upper
105	40185		
105	100		
77	84.0	65.2	97.8
51	39.6	22.6	33.8

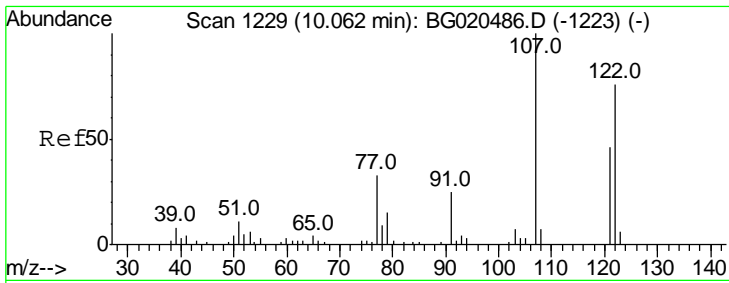
Manual Integrations
 APPROVED
 Sohil
 12/28/2015 6:03:54 PM



#16
 4-Methylphenol
 Concen: 34.79 ng/ul
 RT: 8.87 min Scan# 1026
 Delta R.T. 0.01 min
 Lab File: BG020497.D
 Acq: 25 Dec 2015 7:02

Tgt Ion	Resp	Lower	Upper
108	140482		
108	100		
107	104.7	88.9	133.3



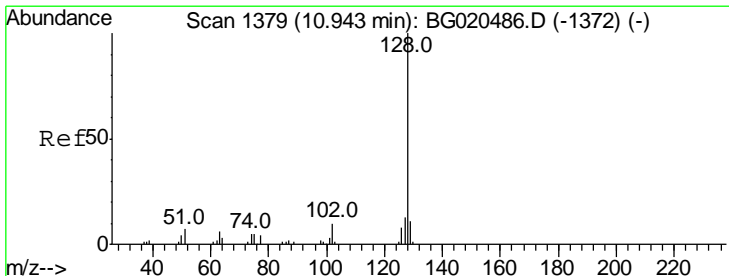
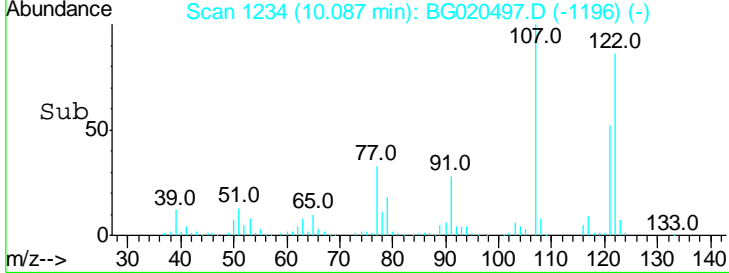
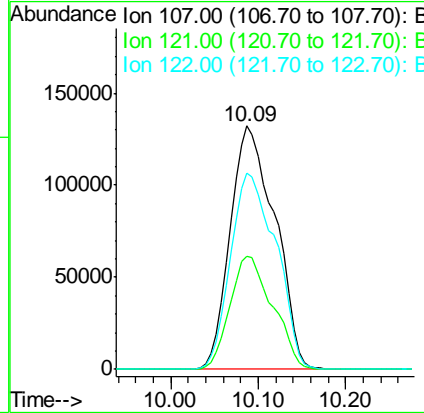
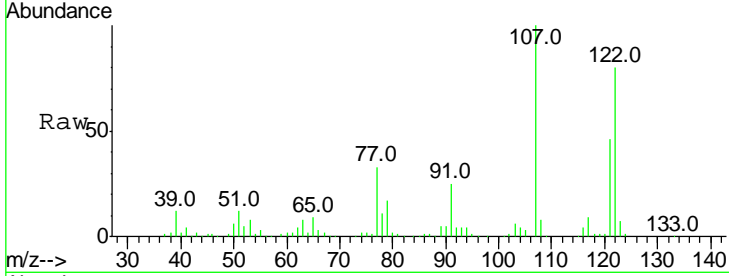


#24
 2,4-Dimethylphenol
 Concen: 105.50 ng/ul
 RT: 10.09 min Scan# 1234
 Delta R.T. 0.03 min
 Lab File: BG020497.D
 Acq: 25 Dec 2015 7:02

Instrument :
 BNA_G
ClientSampled :
 D9N51

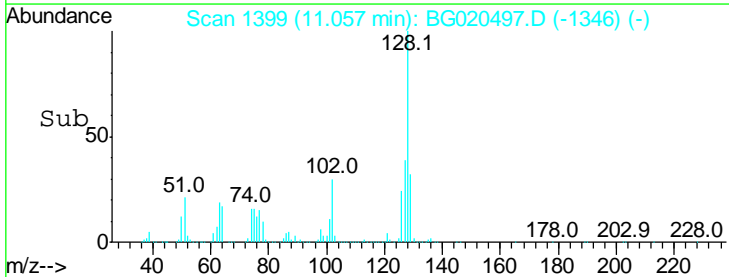
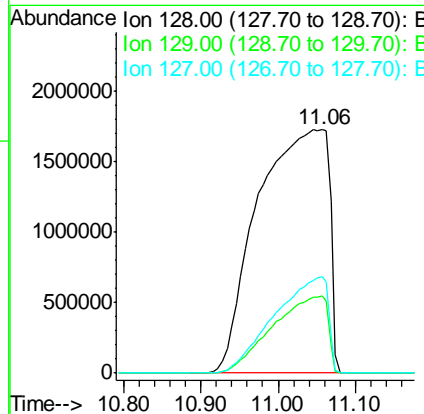
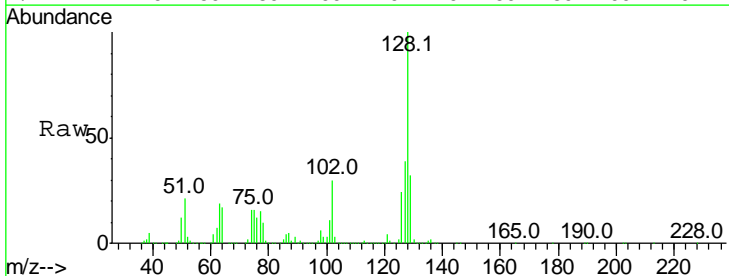
Tgt Ion	Resp	Lower	Upper
107	100		
121	46.4	39.0	58.4
122	80.4	62.1	93.1

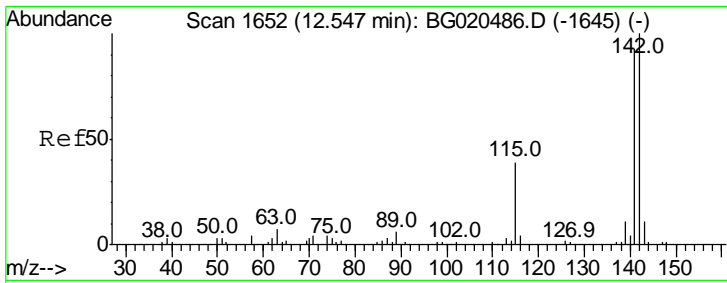
Manual Integrations
APPROVED
 Sohil
 12/28/2015 6:03:54 PM



#28
 Naphthalene
 Concen: 955.55 ng/ul
 RT: 11.06 min Scan# 1399
 Delta R.T. 0.11 min
 Lab File: BG020497.D
 Acq: 25 Dec 2015 7:02

Tgt Ion	Resp	Lower	Upper
128	100		
129	31.6	8.6	12.8#
127	39.5	10.1	15.1#





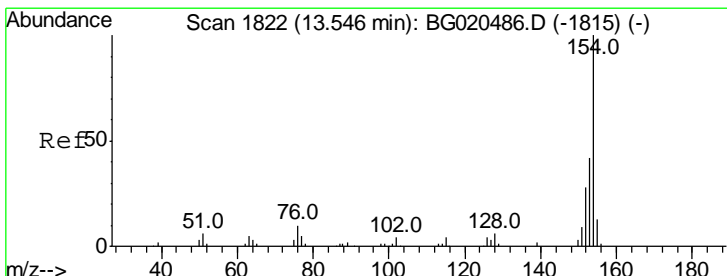
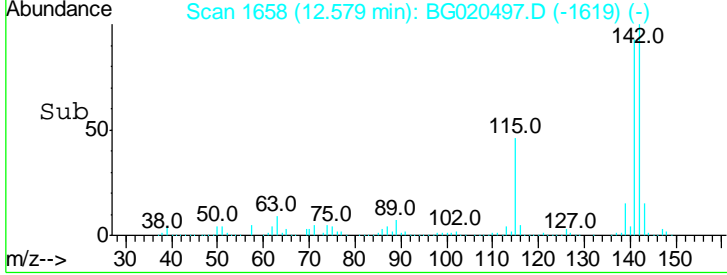
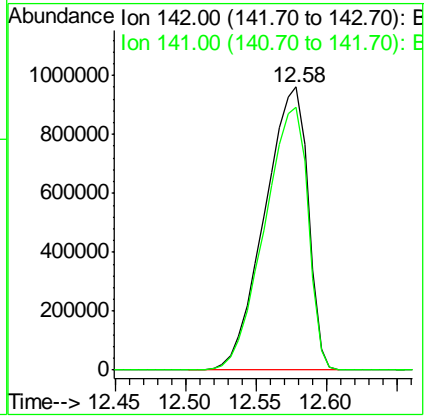
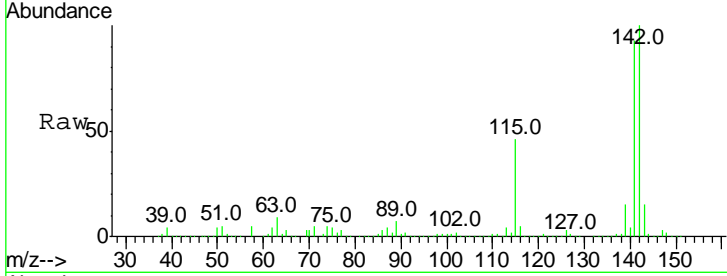
#34
 2-Methylnaphthalene
 Concen: 240.14 ng/ul
 RT: 12.58 min Scan# 1658
 Delta R.T. 0.03 min
 Lab File: BG020497.D
 Acq: 25 Dec 2015 7:02

Instrument :
 BNA_G
ClientSampled :
 D9N51

Tgt Ion:142 Resp: 2066003

Ion	Ratio	Lower	Upper
142	100		
141	92.8	74.9	112.3

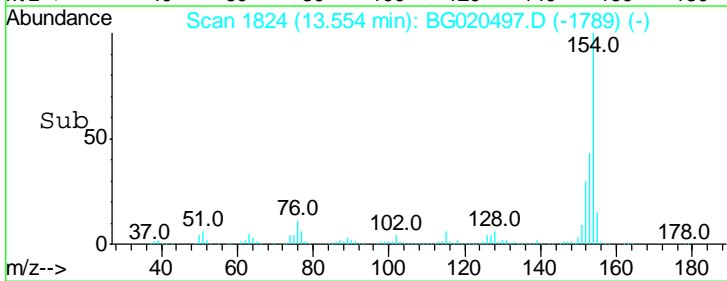
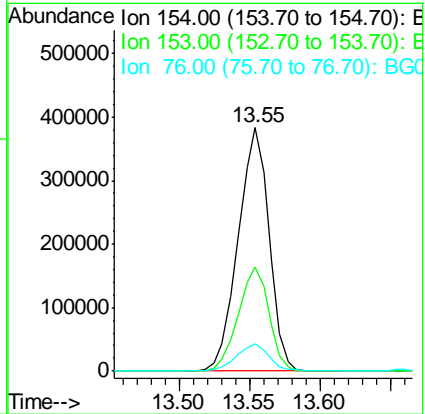
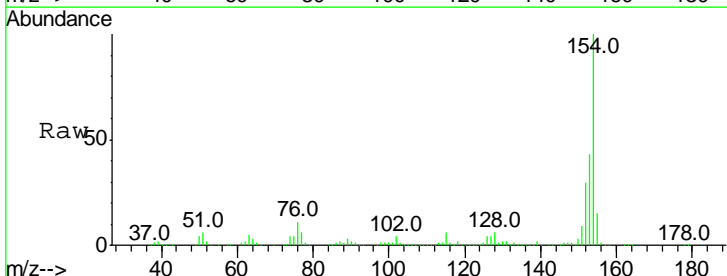
Manual Integrations
APPROVED
 Sohil
 12/28/2015 6:03:54 PM

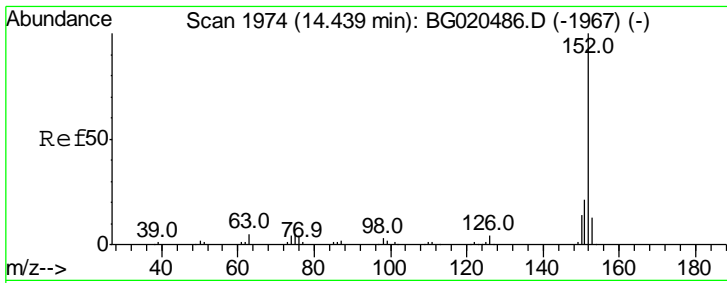


#41
 1,1'-Biphenyl
 Concen: 45.21 ng/ul
 RT: 13.55 min Scan# 1824
 Delta R.T. 0.01 min
 Lab File: BG020497.D
 Acq: 25 Dec 2015 7:02

Tgt Ion:154 Resp: 585624

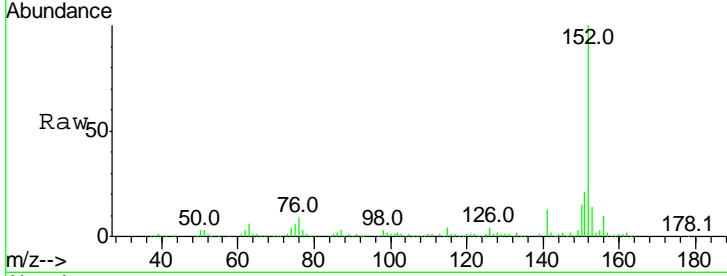
Ion	Ratio	Lower	Upper
154	100		
153	42.9	35.5	53.3
76	11.3	10.4	15.6





#48
 Acenaphthylene
 Concen: 15.20 ng/ul
 RT: 14.44 min Scan# 1975
 Delta R.T. 0.00 min
 Lab File: BG020497.D
 Acq: 25 Dec 2015 7:02

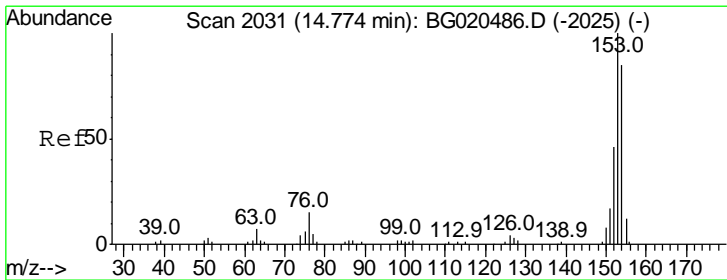
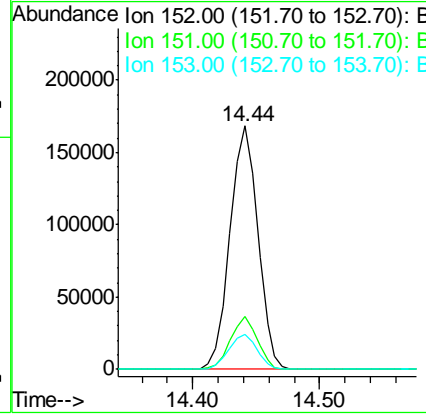
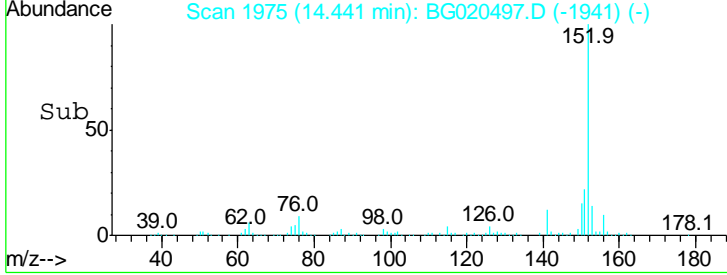
Instrument :
 BNA_G
ClientSampled :
 D9N51



Tgt Ion:152 Resp: 256059

Ion	Ratio	Lower	Upper
152	100		
151	21.5	16.4	24.6
153	14.2	10.4	15.6

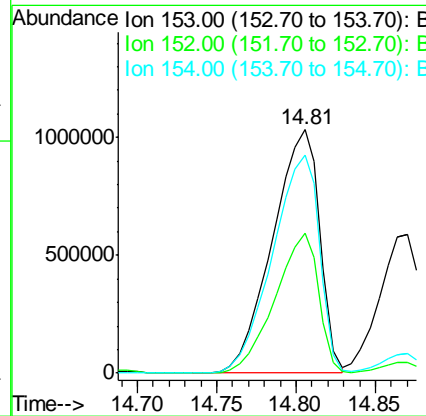
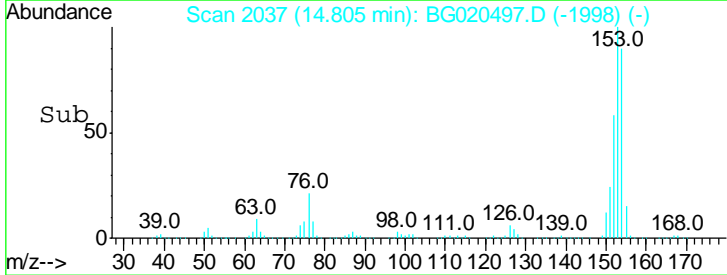
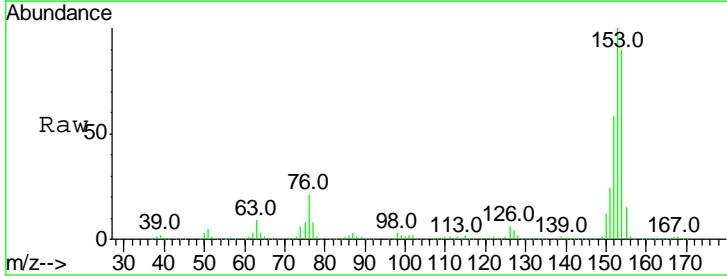
Manual Integrations
APPROVED
 Sohil
 12/28/2015 6:03:54 PM

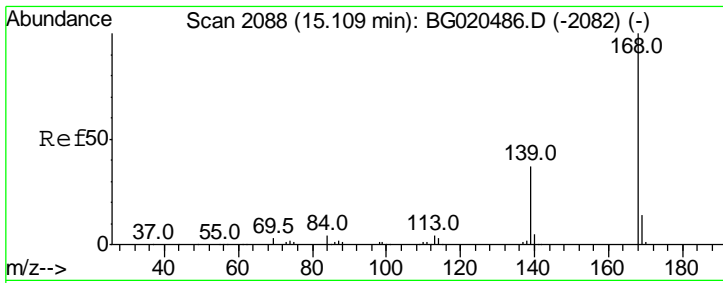


#50
 Acenaphthene
 Concen: 186.51 ng/ul
 RT: 14.81 min Scan# 2037
 Delta R.T. 0.03 min
 Lab File: BG020497.D
 Acq: 25 Dec 2015 7:02

Tgt Ion:153 Resp: 2124329

Ion	Ratio	Lower	Upper
153	100		
152	57.5	37.6	56.4#
154	89.7	67.9	101.9





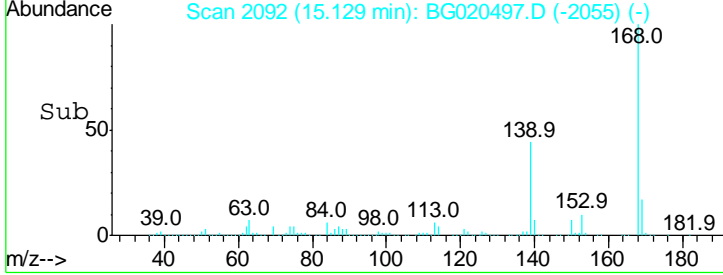
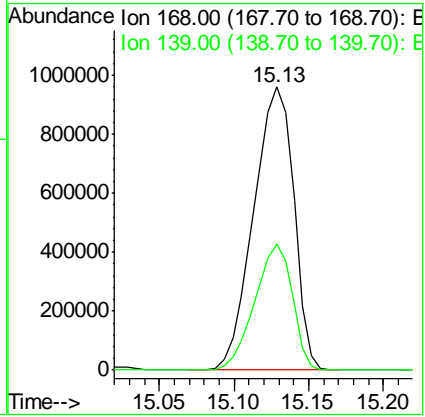
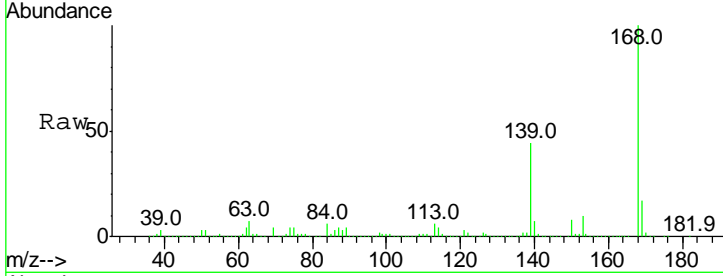
#54
 Dibenzofuran
 Concen: 105.56 ng/ul
 RT: 15.13 min Scan# 2092
 Delta R.T. 0.02 min
 Lab File: BG020497.D
 Acq: 25 Dec 2015 7:02

Instrument :
 BNA_G
 ClientSampled :
 D9N51

Tgt Ion:168 Resp: 1788796

Ion	Ratio	Lower	Upper
168	100		
139	44.4	30.5	45.7

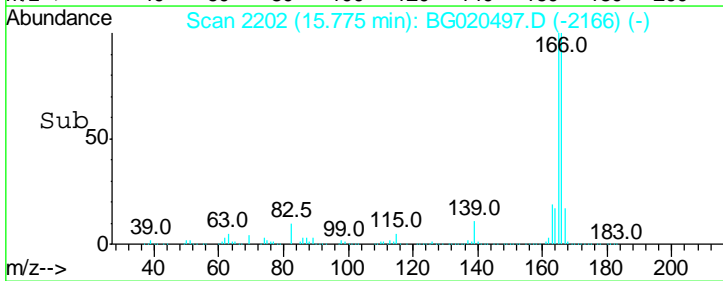
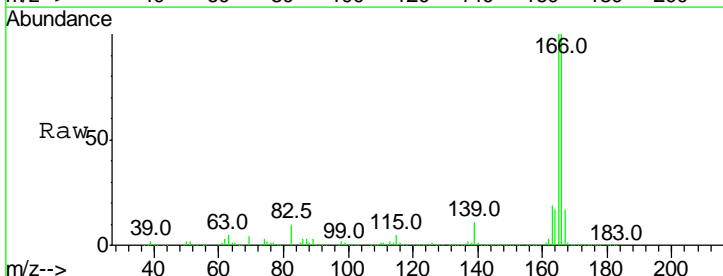
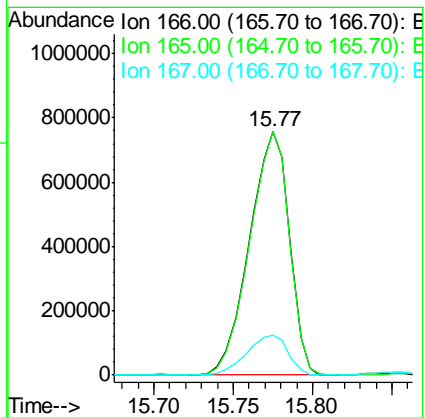
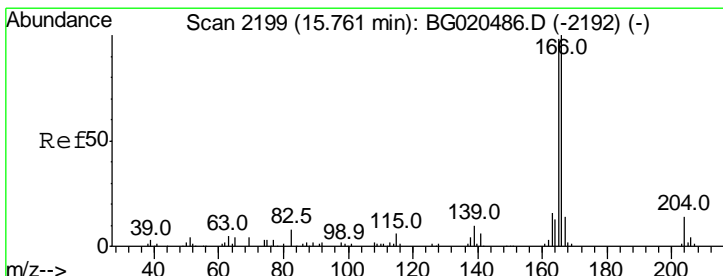
Manual Integrations
APPROVED
 Sohil
 12/28/2015 6:03:54 PM

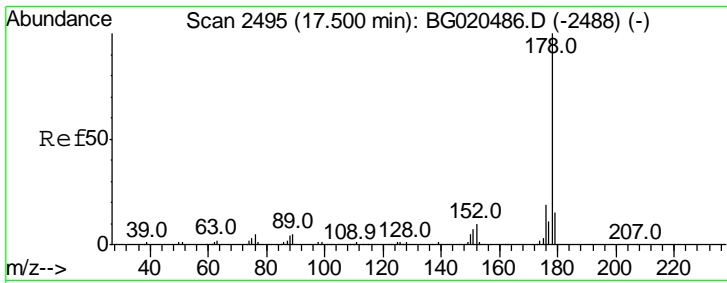


#59
 Fluorene
 Concen: 95.93 ng/ul
 RT: 15.77 min Scan# 2202
 Delta R.T. 0.01 min
 Lab File: BG020497.D
 Acq: 25 Dec 2015 7:02

Tgt Ion:166 Resp: 1317373

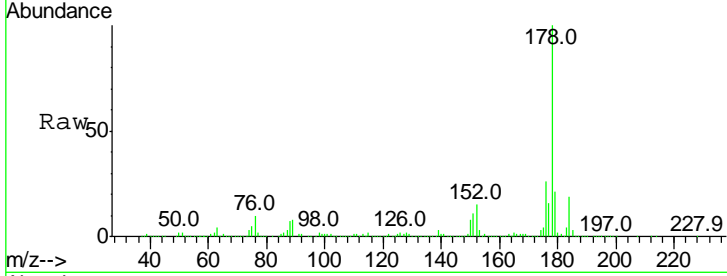
Ion	Ratio	Lower	Upper
166	100		
165	100.0	81.4	122.0
167	16.6	11.2	16.8





#70
 Phenanthrene
 Concen: 96.15 ng/ul m
 RT: 17.52 min Scan# 2499
 Delta R.T. 0.02 min
 Lab File: BG020497.D
 Acq: 25 Dec 2015 7:02

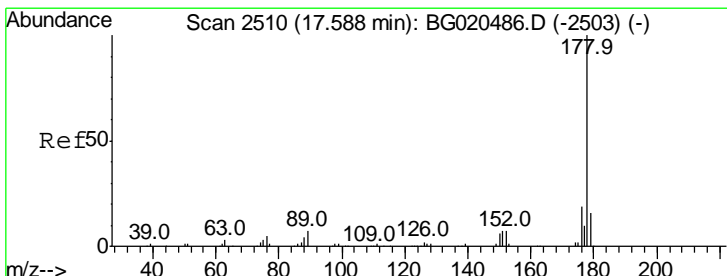
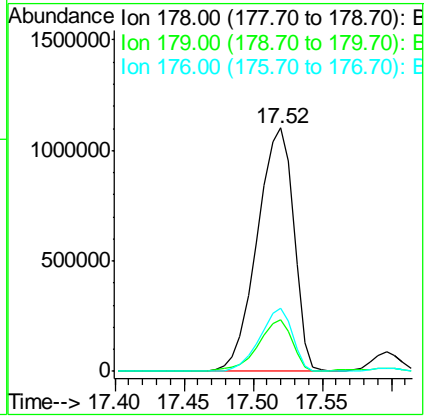
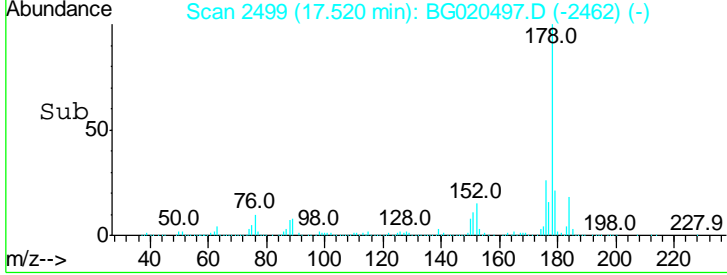
Instrument :
 BNA_G
Client Sampled :
 D9N51



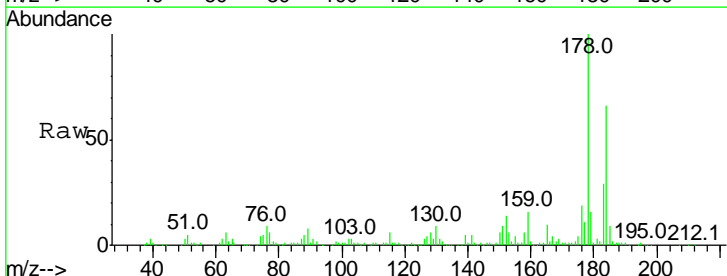
Tgt Ion: 178 Resp: 2032958

Ion	Ratio	Lower	Upper
178	100		
179	21.2	12.9	19.3#
176	25.8	15.3	22.9#

Manual Integrations
APPROVED
 Sohil
 12/28/2015 6:03:54 PM

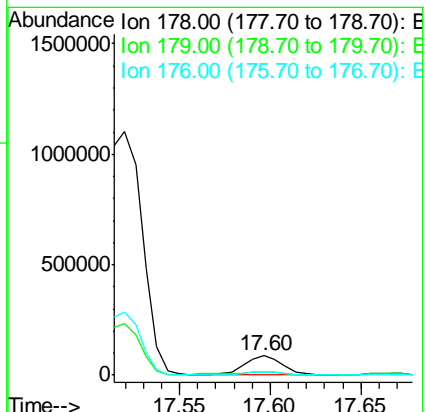
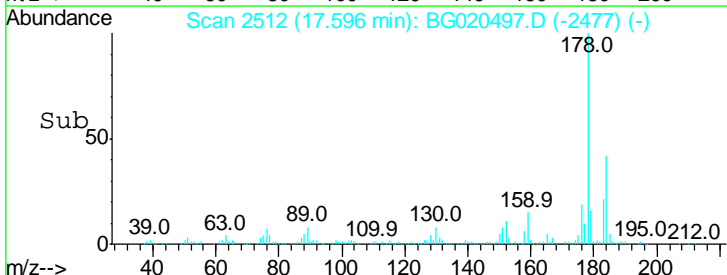


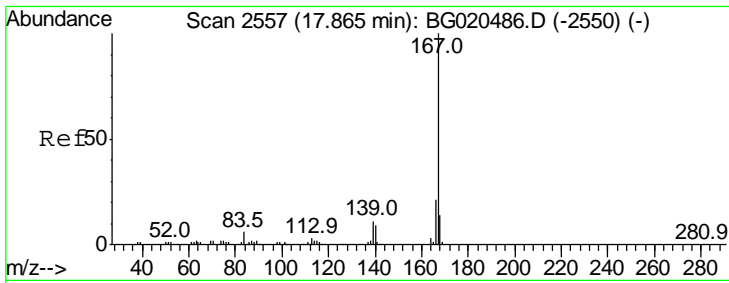
#72
 Anthracene
 Concen: 6.01 ng/ul
 RT: 17.60 min Scan# 2512
 Delta R.T. 0.01 min
 Lab File: BG020497.D
 Acq: 25 Dec 2015 7:02



Tgt Ion: 178 Resp: 129881

Ion	Ratio	Lower	Upper
178	100		
179	16.2	12.3	18.5
176	18.5	14.3	21.5





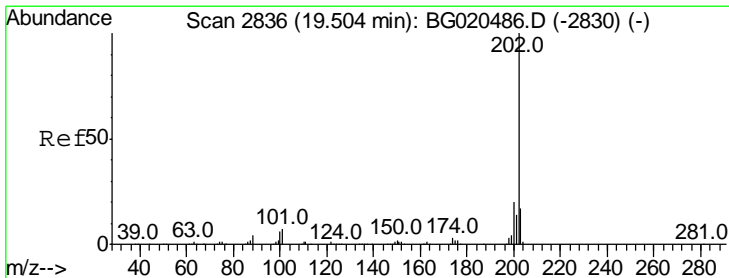
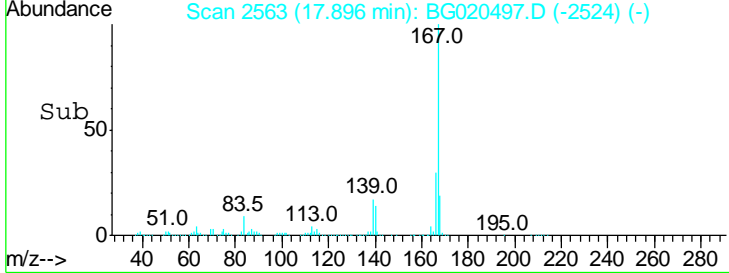
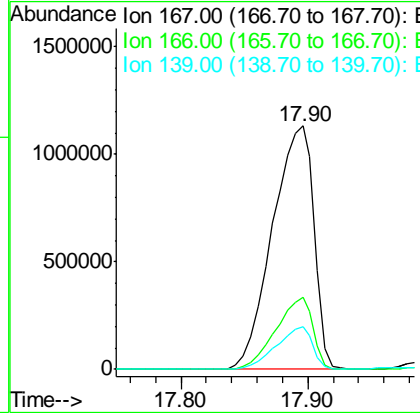
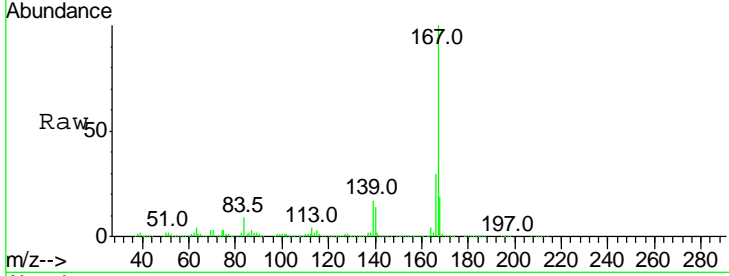
#75
 Carbazole
 Concen: 141.47 ng/ul
 RT: 17.90 min Scan# 2563
 Delta R.T. 0.03 min
 Lab File: BG020497.D
 Acq: 25 Dec 2015 7:02

Instrument :
 BNA_G
 ClientSampled :
 D9N51

Tgt Ion:167 Resp: 2577521

Ion	Ratio	Lower	Upper
167	100		
166	29.6	17.0	25.6#
139	17.4	10.1	15.1#

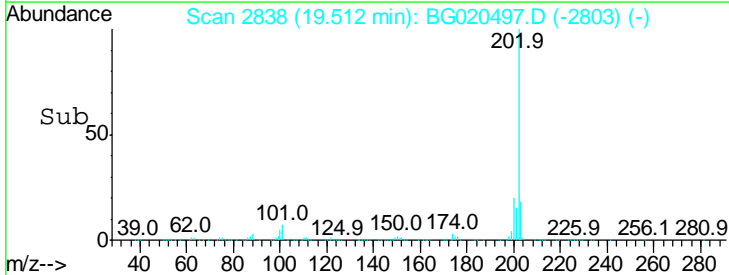
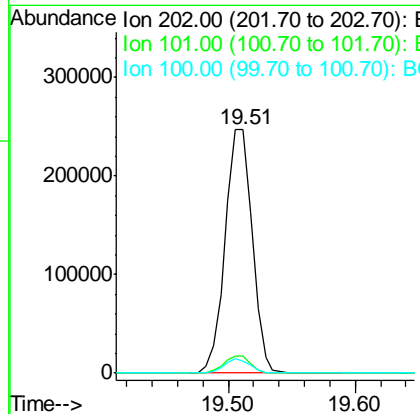
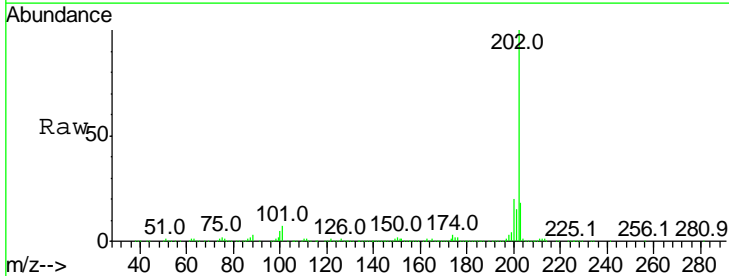
Manual Integrations
 APPROVED
 Sohil
 12/28/2015 6:03:54 PM

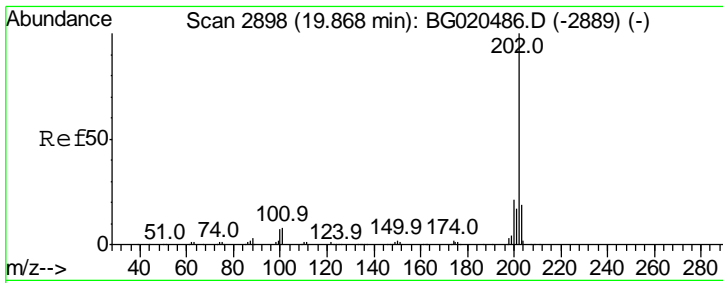


#77
 Fluoranthene
 Concen: 13.70 ng/ul
 RT: 19.51 min Scan# 2838
 Delta R.T. 0.01 min
 Lab File: BG020497.D
 Acq: 25 Dec 2015 7:02

Tgt Ion:202 Resp: 364316

Ion	Ratio	Lower	Upper
202	100		
101	6.9	6.2	9.4
100	5.1	5.1	7.7#





#80
 Pyrene
 Concen: 7.61 ng/ul
 RT: 19.87 min Scan# 2899
 Delta R.T. 0.00 min
 Lab File: BG020497.D
 Acq: 25 Dec 2015 7:02

Instrument :
 BNA_G
ClientSampled :
 D9N51

Tot Ion	Ion	Ratio	Lower	Upper
210684	202	100		
	101	8.0	7.0	10.4
	100	6.9	6.4	9.6

Manual Integrations
APPROVED
 Sohil
 12/28/2015 6:03:54 PM

