

Data Path : Z:\HPCHEM1\BNA G\DATA\BG122515\
 Data File : BG020502.D
 Acq On : 25 Dec 2015 13:11
 Operator : UM/SJ
 Sample : G4848-05DL 30X
 Misc :
 ALS Vial : 42 Sample Multiplier: 1

Instrument :
 BNA_G
 ClientSampleId :
 D9N51MEDL

Integration Parameters: LSCINT.P

Integrator: RTE
 Smoothing : OFF
 Sampling : 1
 Start Thrs: 0.2
 Stop Thrs : 0

Filtering: 5
 Min Area: 0.1 % of largest Peak
 Max Peaks: 100
 Peak Location: TOP

If leading or trailing edge < 100 prefer < Baseline drop else tangent >
 Peak separation: 5

Method : Z:\HPCHEM1\BNA G\METHODS\SOM02.2-EPA-BG122415.M
 Title : SVOA CALIBRATION

Signal : TIC

peak #	R.T. min	first scan	max scan	last scan	PK TY	peak height	corr. area	corr. % max.	% of total
1	3.096	39	44	49	rBV2	8452	12619	0.76%	0.111%
2	8.078	886	892	901	rVB	65978	114135	6.91%	1.001%
3	8.619	978	984	991	rBB2	7745	14176	0.86%	0.124%
4	10.893	1363	1371	1375	rBV	106017	196194	11.88%	1.721%
5	10.946	1375	1380	1391	rVV	295165	514797	31.18%	4.515%
6	11.063	1394	1400	1407	rVB	7275	13125	0.79%	0.115%
7	12.544	1645	1652	1665	rBB	163514	267412	16.20%	2.345%
8	12.761	1678	1689	1700	rBB	76829	129146	7.82%	1.133%
9	13.543	1816	1822	1830	rBV	52768	81183	4.92%	0.712%
10	13.742	1849	1856	1865	rVB	18105	30895	1.87%	0.271%
11	13.878	1872	1879	1880	rBV3	24980	42899	2.60%	0.376%
12	14.030	1899	1905	1910	rBV2	38740	67321	4.08%	0.590%
13	14.083	1910	1914	1925	rVB2	25075	44225	2.68%	0.388%
14	14.265	1940	1945	1948	rBV	14093	20890	1.27%	0.183%
15	14.436	1970	1974	1980	rVB2	14957	22855	1.38%	0.200%
16	14.677	2010	2015	2016	rBV	25628	29109	1.76%	0.255%
17	14.712	2016	2021	2026	rVV2	197521	322961	19.56%	2.832%
18	14.777	2026	2032	2039	rVV	344514	530942	32.16%	4.656%
19	14.841	2039	2043	2049	rVB2	12752	17737	1.07%	0.156%
20	14.906	2049	2054	2063	rVB2	5228	12133	0.73%	0.106%
21	15.017	2065	2073	2078	rVV2	11722	19308	1.17%	0.169%
22	15.106	2082	2088	2096	rVV	220224	346999	21.02%	3.043%
23	15.176	2096	2100	2110	rVB3	9413	14096	0.85%	0.124%
24	15.323	2119	2125	2129	rBV3	6476	10067	0.61%	0.088%
25	15.370	2129	2133	2141	rVB3	6907	10084	0.61%	0.088%
26	15.487	2147	2153	2157	rBV	5138	9924	0.60%	0.087%
27	15.699	2186	2189	2193	rVV3	9300	13989	0.85%	0.123%
28	15.758	2193	2199	2208	rVV	320406	489217	29.63%	4.291%
29	15.846	2208	2214	2217	rVV	13947	23481	1.42%	0.206%
30	15.881	2217	2220	2222	rVV	22364	30393	1.84%	0.267%
31	15.916	2222	2226	2231	rVV3	41106	65632	3.98%	0.576%
32	15.963	2231	2234	2237	rVV2	8944	12247	0.74%	0.107%
33	16.004	2237	2241	2244	rVV2	20385	30584	1.85%	0.268%
34	16.046	2244	2248	2254	rVB	45652	68255	4.13%	0.599%

Data Path : Z:\HPCHEM1\BNA G\DATA\BG122515\
 Data File : BG020502.D
 Acq On : 25 Dec 2015 13:11
 Operator : UM/SJ
 Sample : G4848-05DL 30X
 Misc :
 ALS Vial : 42 Sample Multiplier: 1

Instrument :
 BNA_G
 ClientSampleId :
 D9N51MEDL

Integration Parameters: LSCINT.P

Integrator: RTE
 Smoothing : OFF
 Sampling : 1
 Start Thrs: 0.2
 Stop Thrs : 0

Filtering: 5
 Min Area: 0.1 % of largest Peak
 Max Peaks: 100
 Peak Location: TOP

If leading or trailing edge < 100 prefer < Baseline drop else tangent >
 Peak separation: 5

Method : Z:\HPCHEM1\BNA G\METHODS\SOM02.2-EPA-BG122415.M
 Title : SVOA CALIBRATION

35	16.192	2263	2273	2282	rBV	48718	101054	6.12%	0.886%
36	16.287	2282	2289	2294	rVB2	7908	12640	0.77%	0.111%
37	16.551	2328	2334	2340	rVB2	17437	26480	1.60%	0.232%
38	16.757	2358	2369	2374	rBV3	36265	79690	4.83%	0.699%
39	16.804	2374	2377	2383	rVV4	13768	25039	1.52%	0.220%
40	16.856	2383	2386	2390	rVV3	5362	10314	0.62%	0.090%
41	16.909	2390	2395	2399	rVB2	15374	23899	1.45%	0.210%
42	16.980	2404	2407	2411	rVV3	7552	9922	0.60%	0.087%
43	17.021	2411	2414	2418	rVB3	9490	11429	0.69%	0.100%
44	17.109	2425	2429	2435	rVB4	6303	10830	0.66%	0.095%
45	17.180	2435	2441	2450	rBV6	14415	42159	2.55%	0.370%
46	17.274	2450	2457	2468	rVB	73334	110757	6.71%	0.971%
47	17.456	2481	2488	2491	rBV	276521	432606	26.20%	3.794%
48	17.503	2491	2496	2502	rVV	1115312	1650997	100.00%	14.480%
49	17.550	2502	2504	2506	rVV2	11424	13594	0.82%	0.119%
50	17.591	2506	2511	2515	rVB	68895	101881	6.17%	0.894%
51	17.855	2550	2556	2571	rBV	41275	80590	4.88%	0.707%
52	17.973	2571	2576	2581	rVV	16598	24009	1.45%	0.211%
53	18.037	2581	2587	2596	rVB7	6142	17408	1.05%	0.153%
54	18.178	2606	2611	2619	rVB3	6702	14250	0.86%	0.125%
55	18.331	2631	2637	2641	rBV	72921	108106	6.55%	0.948%
56	18.378	2641	2645	2651	rVB	99858	140673	8.52%	1.234%
57	18.460	2651	2659	2663	rBV	28037	44930	2.72%	0.394%
58	18.525	2663	2670	2675	rBV2	134513	241101	14.60%	2.115%
59	18.825	2716	2721	2726	rVV	59840	83674	5.07%	0.734%
60	19.066	2754	2762	2767	rBV3	12591	18656	1.13%	0.164%
61	19.118	2767	2771	2774	rVV2	9457	11949	0.72%	0.105%
62	19.236	2785	2791	2796	rBV2	18481	34274	2.08%	0.301%
63	19.301	2796	2802	2805	rVV3	10989	16515	1.00%	0.145%
64	19.506	2830	2837	2843	rVV	689134	974892	59.05%	8.550%
65	19.559	2843	2846	2849	rVV2	7194	10758	0.65%	0.094%
66	19.594	2849	2852	2856	rVV3	6921	9663	0.59%	0.085%
67	19.747	2873	2878	2886	rVB	17296	27273	1.65%	0.239%
68	19.835	2886	2893	2894	rBV2	125478	177903	10.78%	1.560%
69	19.865	2894	2898	2906	rVV	426331	634734	38.45%	5.567%
70	19.929	2906	2909	2916	rVB2	20253	32281	1.96%	0.283%
71	20.041	2923	2928	2933	rVB	24240	35335	2.14%	0.310%

Data Path : Z:\HPCHEM1\BNA G\DATA\BG122515\
 Data File : BG020502.D
 Acq On : 25 Dec 2015 13:11
 Operator : UM/SJ
 Sample : G4848-05DL 30X
 Misc :
 ALS Vial : 42 Sample Multiplier: 1

Instrument :
 BNA_G
 ClientSampleId :
 D9N51MEDL

Integration Parameters: LSCINT.P

Integrator: RTE
 Smoothing : OFF
 Sampling : 1
 Start Thrs: 0.2
 Stop Thrs : 0

Filtering: 5
 Min Area: 0.1 % of largest Peak
 Max Peaks: 100
 Peak Location: TOP

If leading or trailing edge < 100 prefer < Baseline drop else tangent >
 Peak separation: 5

Method : Z:\HPCHEM1\BNA G\METHODS\SOM02.2-EPA-BG122415.M
 Title : SVOA CALIBRATION

72	20.182	2946	2952	2959	rBV3	22743	59232	3.59%	0.519%
73	20.241	2959	2962	2966	rVB	9240	11221	0.68%	0.098%
74	20.352	2969	2981	2986	rBV	81597	140600	8.52%	1.233%
75	20.452	2991	2998	3002	rBV	85154	119345	7.23%	1.047%
76	20.511	3002	3008	3011	rVV2	24236	43300	2.62%	0.380%
77	20.546	3011	3014	3018	rVV	14778	18474	1.12%	0.162%
78	20.587	3018	3021	3026	rVB4	7667	11237	0.68%	0.099%
79	20.652	3028	3032	3036	rBV	10977	15506	0.94%	0.136%
80	20.699	3036	3040	3043	rVB2	10620	13605	0.82%	0.119%
81	20.875	3067	3070	3074	rBV2	6151	10078	0.61%	0.088%
82	21.069	3099	3103	3108	rBV4	7534	13789	0.84%	0.121%
83	21.304	3138	3143	3147	rBV	17594	26289	1.59%	0.231%
84	21.345	3147	3150	3154	rVV2	17304	24880	1.51%	0.218%
85	21.392	3154	3158	3164	rVV2	12044	20388	1.23%	0.179%
86	21.580	3185	3190	3197	rBV2	5397	13814	0.84%	0.121%
87	21.727	3205	3215	3220	rBV2	389553	788600	47.77%	6.916%
88	21.774	3220	3223	3233	rVB	77517	121022	7.33%	1.061%
89	21.927	3244	3249	3255	rBV	18842	31208	1.89%	0.274%
90	22.144	3279	3286	3291	rBV4	8070	18466	1.12%	0.162%
91	22.785	3391	3395	3404	rVB6	6073	12432	0.75%	0.109%
92	23.948	3586	3593	3601	rBV3	19798	68286	4.14%	0.599%
93	24.019	3601	3605	3611	rVB2	17271	34684	2.10%	0.304%
94	24.683	3712	3718	3725	rBV2	9243	20680	1.25%	0.181%
95	24.835	3737	3744	3752	rVB2	12536	29202	1.77%	0.256%
96	24.988	3759	3770	3780	rBV2	203127	571198	34.60%	5.010%
97	26.116	3953	3962	3971	rVB4	12220	36643	2.22%	0.321%
98	27.485	4187	4195	4207	rVB4	14247	48490	2.94%	0.425%
99	29.130	4465	4475	4485	rVB5	9857	36530	2.21%	0.320%
100	31.122	4807	4814	4816	rBV8	6044	11755	0.71%	0.103%

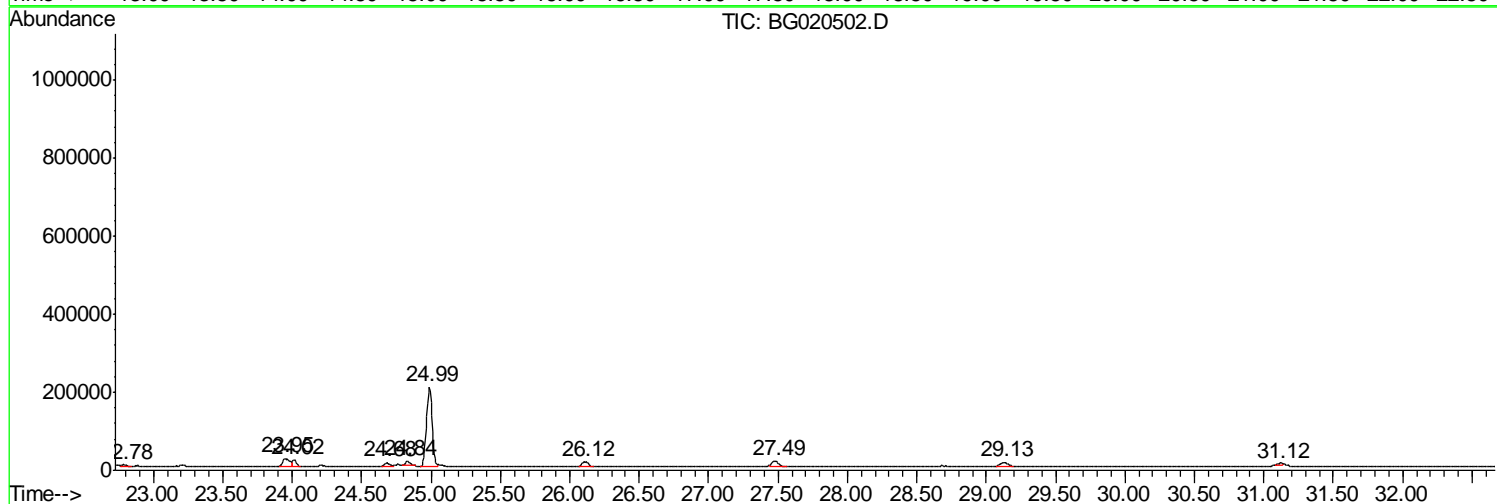
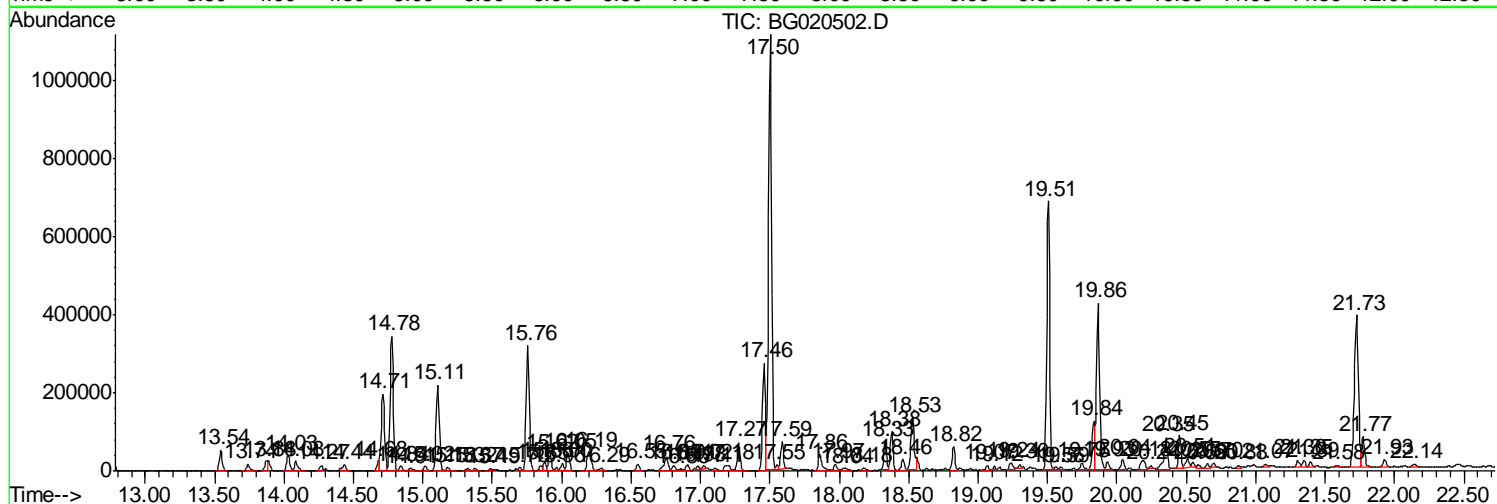
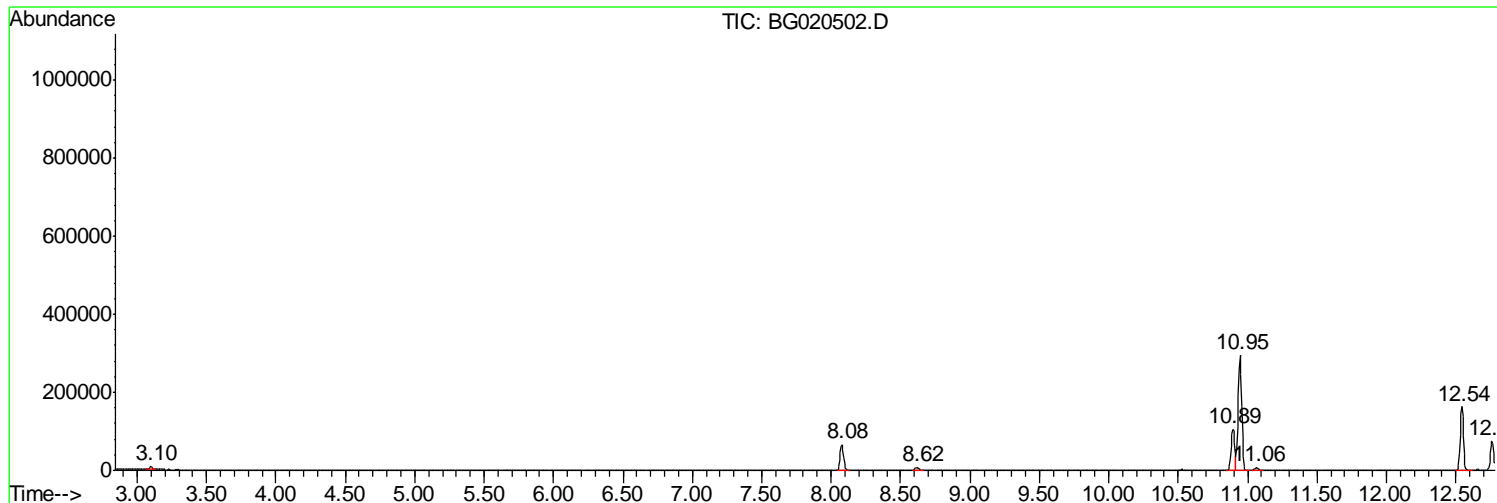
Sum of corrected areas: 11402249

Data Path : Z:\HPCHEM1\BNA G\DATA\BG122515\
 Data File : BG020502.D
 Acq On : 25 Dec 2015 13:11
 Operator : UM/SJ
 Sample : G4848-05DL 30X
 Misc :
 ALS Vial : 42 Sample Multiplier: 1

Instrument :
 BNA_G
 ClientSampleId :
 D9N51MEDL

Quant Method : Z:\HPCHEM1\BNA G\METHODS\SOM02.2-EPA-BG122415.M
 Quant Title : SVOA CALIBRATION

TIC Library : C:\DATABASE\NIST02.L
 TIC Integration Parameters: LSCINT.P



Data Path : Z:\HPCHEM1\BNA G\DATA\BG122515\
 Data File : BG020502.D
 Acq On : 25 Dec 2015 13:11
 Operator : UM/SJ
 Sample : G4848-05DL 30X
 Misc :
 ALS Vial : 42 Sample Multiplier: 1

Instrument :
 BNA_G
 ClientSampleID :
 D9N51MEDL

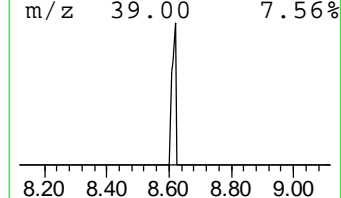
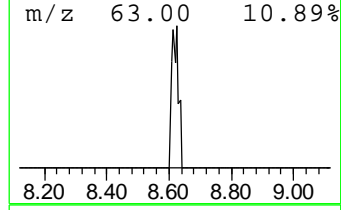
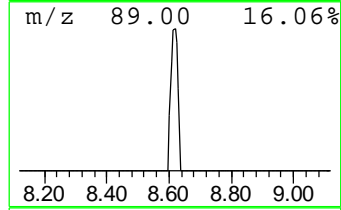
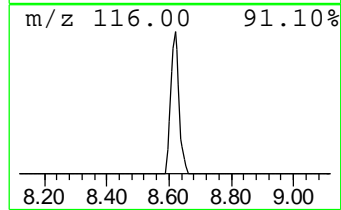
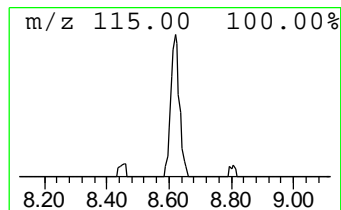
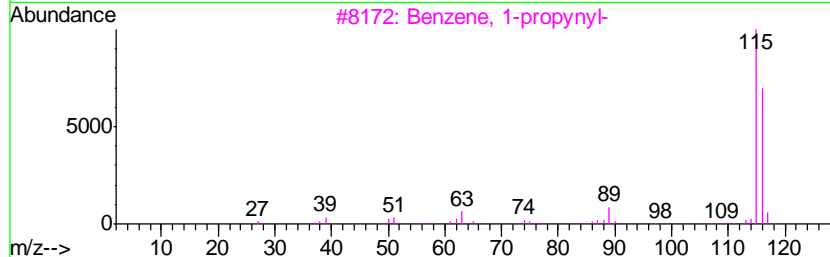
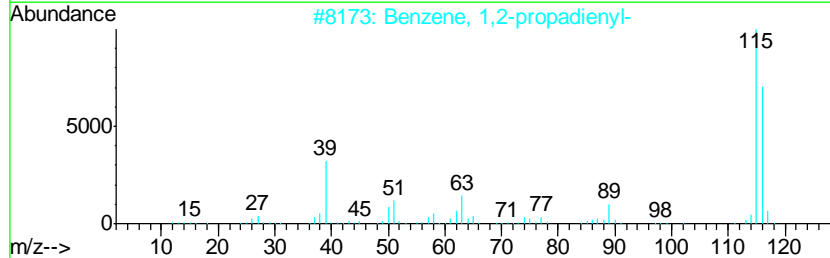
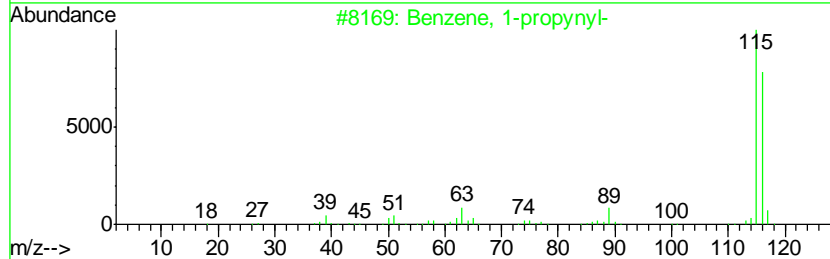
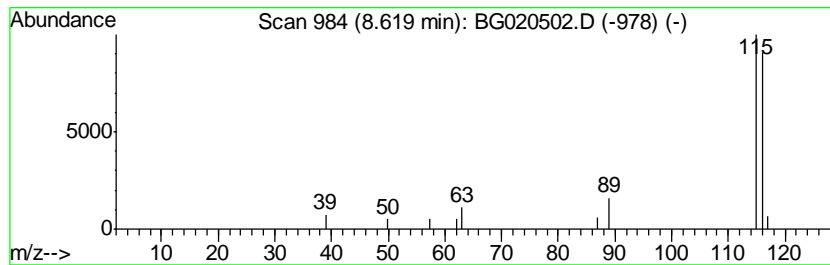
Quant Method : Z:\HPCHEM1\BNA G\METHODS\SOM02.2-EPA-BG122415.M
 Quant Title : SVOA CALIBRATION

TIC Library : C:\DATABASE\NIST02.L
 TIC Integration Parameters: LSCINT.P

 Peak Number 2 Benzene, 1-propynyl- Concentration Rank 16

R.T.	EstConc	Area	Relative to ISTD	R.T.
8.62	2.48 ng/ul	14176	1,4-Dichlorobenzene-d4	8.08

Hit#	of	Tentative ID	MW	MolForm	CAS#	Qual
1	5	Benzene, 1-propynyl-	116	C9H8	000673-32-5	90
2		Benzene, 1,2-propadienyl-	116	C9H8	002327-99-3	90
3		Benzene, 1-propynyl-	116	C9H8	000673-32-5	83
4		Benzene, 1-propynyl-	116	C9H8	000673-32-5	74
5		Indene	116	C9H8	000095-13-6	59



Data Path : Z:\HPCHEM1\BNA G\DATA\BG122515\
 Data File : BG020502.D
 Acq On : 25 Dec 2015 13:11
 Operator : UM/SJ
 Sample : G4848-05DL 30X
 Misc :
 ALS Vial : 42 Sample Multiplier: 1

Instrument :
 BNA_G
 ClientSampleID :
 D9N51MEDL

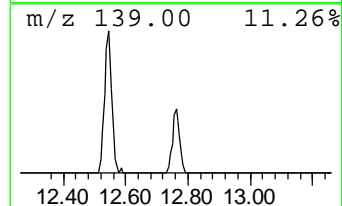
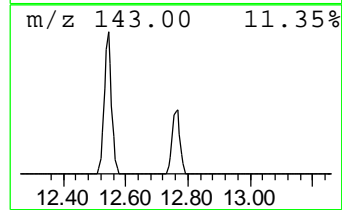
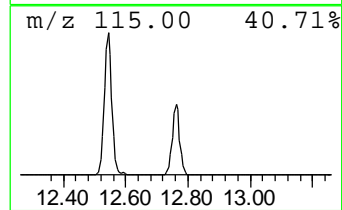
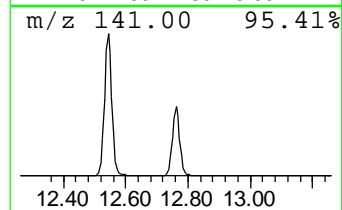
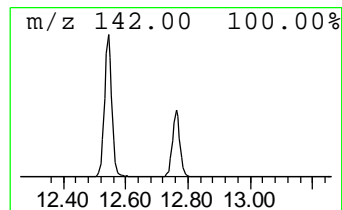
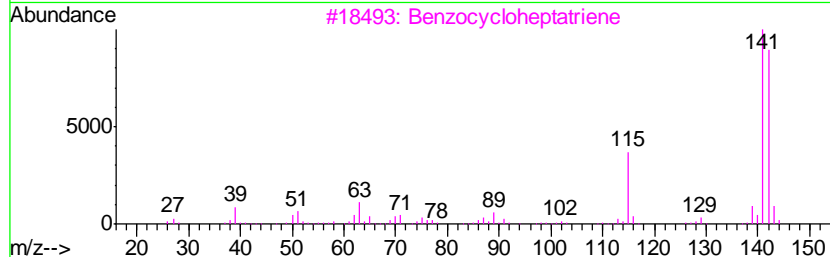
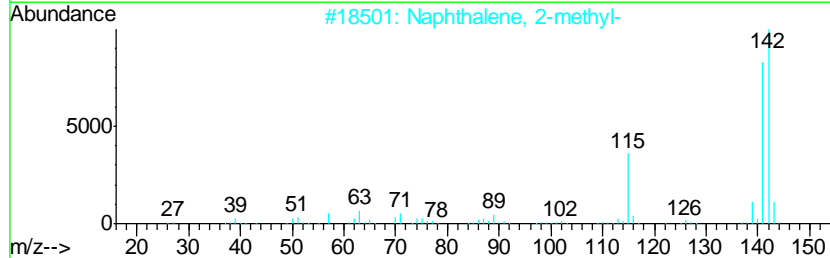
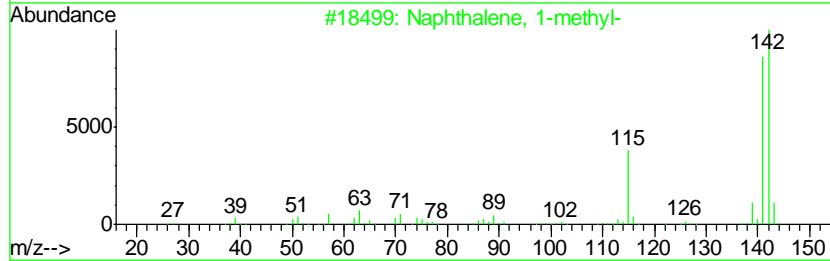
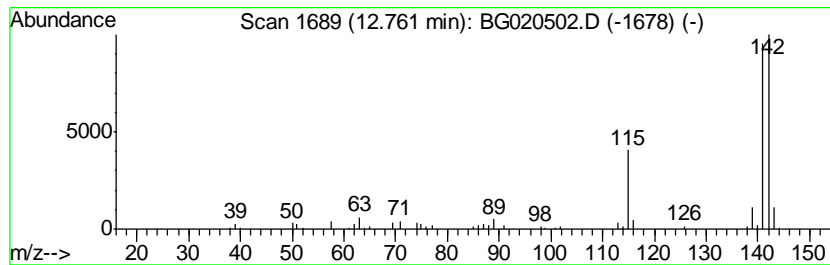
Quant Method : Z:\HPCHEM1\BNA G\METHODS\SOM02.2-EPA-BG122415.M
 Quant Title : SVOA CALIBRATION

TIC Library : C:\DATABASE\NIST02.L
 TIC Integration Parameters: LSCINT.P

 Peak Number 3 Naphthalene, 1-methyl- Concentration Rank 1

R.T.	EstConc	Area	Relative to ISTD	R.T.
12.76	13.17 ng/ul	129146	Naphthalene-d8	10.89

Hit#	of	Tentative ID	MW	MolForm	CAS#	Qual
1	5	Naphthalene, 1-methyl-	142	C11H10	000090-12-0	96
2		Naphthalene, 2-methyl-	142	C11H10	000091-57-6	96
3		Benzocycloheptatriene	142	C11H10	000264-09-5	91
4		Naphthalene, 1-methyl-	142	C11H10	000090-12-0	91
5		Naphthalene, 1-methyl-	142	C11H10	000090-12-0	91



Data Path : Z:\HPCHEM1\BNA G\DATA\BG122515\
 Data File : BG020502.D
 Acq On : 25 Dec 2015 13:11
 Operator : UM/SJ
 Sample : G4848-05DL 30X
 Misc :
 ALS Vial : 42 Sample Multiplier: 1

Instrument :
 BNA_G
 ClientSampleId :
 D9N51MEDL

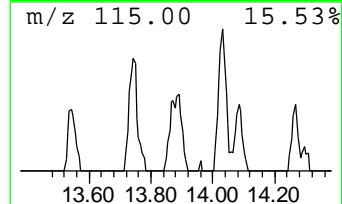
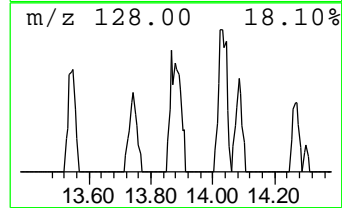
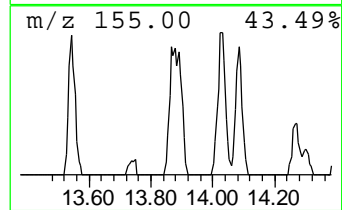
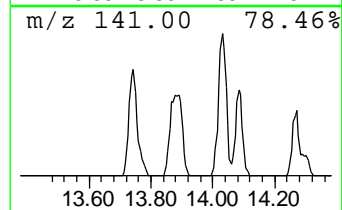
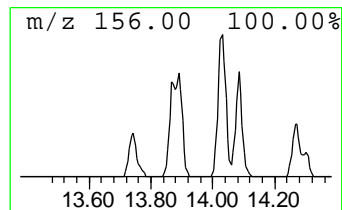
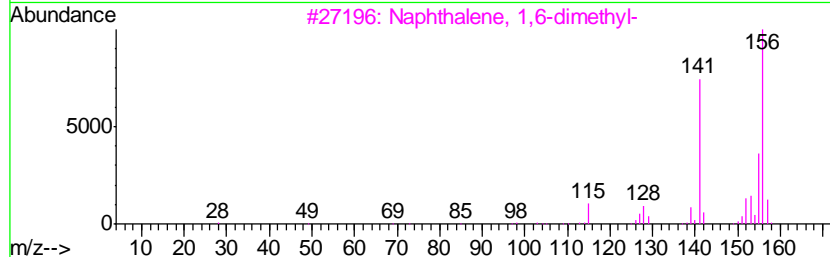
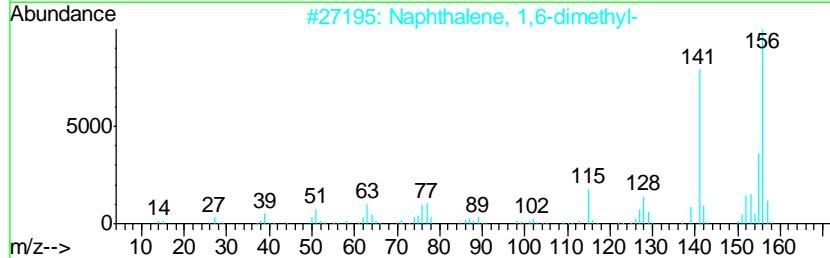
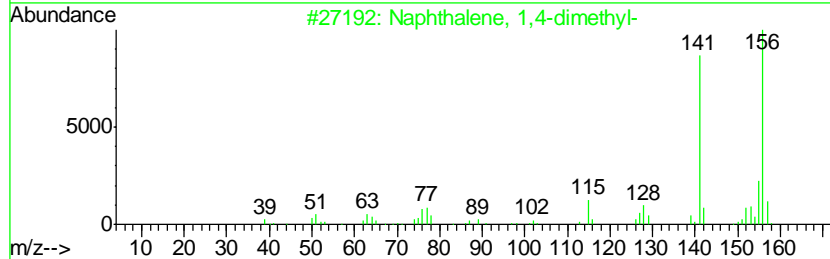
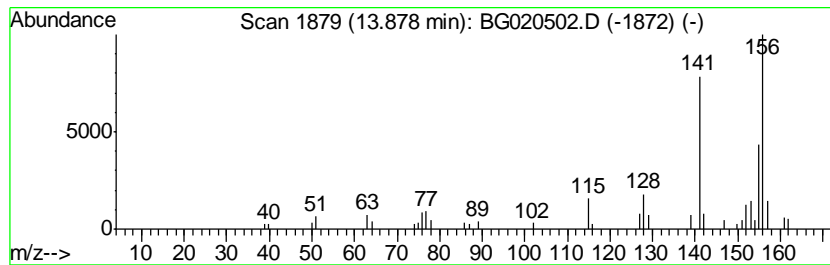
Quant Method : Z:\HPCHEM1\BNA G\METHODS\SOM02.2-EPA-BG122415.M
 Quant Title : SVOA CALIBRATION

TIC Library : C:\DATABASE\NIST02.L
 TIC Integration Parameters: LSCINT.P

 Peak Number 4 Naphthalene, 1,4-dimethyl- Concentration Rank 15

R.T.	EstConc	Area	Relative to ISTD	R.T.
13.88	2.66 ng/ul	42899	Acenaphthene-d10	14.71

Hit#	of	Tentative ID	MW	MolForm	CAS#	Qual
1	5	Naphthalene, 1,4-dimethyl-	156	C12H12	000571-58-4	96
2		Naphthalene, 1,6-dimethyl-	156	C12H12	000575-43-9	95
3		Naphthalene, 1,6-dimethyl-	156	C12H12	000575-43-9	94
4		Naphthalene, 1,7-dimethyl-	156	C12H12	000575-37-1	94
5		Naphthalene, 1,3-dimethyl-	156	C12H12	000575-41-7	94



Data Path : Z:\HPCHEM1\BNA G\DATA\BG122515\
 Data File : BG020502.D
 Acq On : 25 Dec 2015 13:11
 Operator : UM/SJ
 Sample : G4848-05DL 30X
 Misc :
 ALS Vial : 42 Sample Multiplier: 1

Instrument :
 BNA_G
 ClientSampleID :
 D9N51MEDL

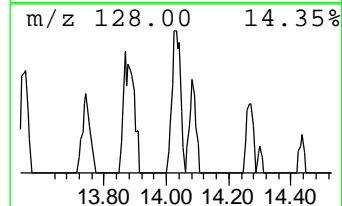
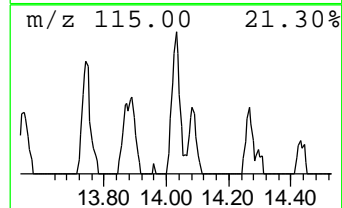
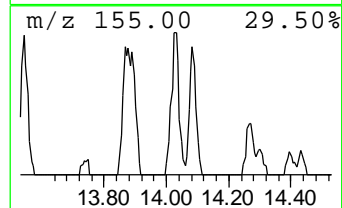
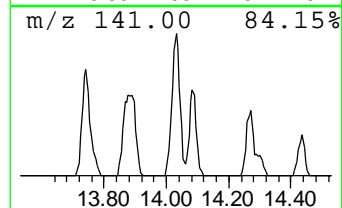
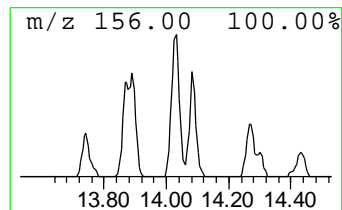
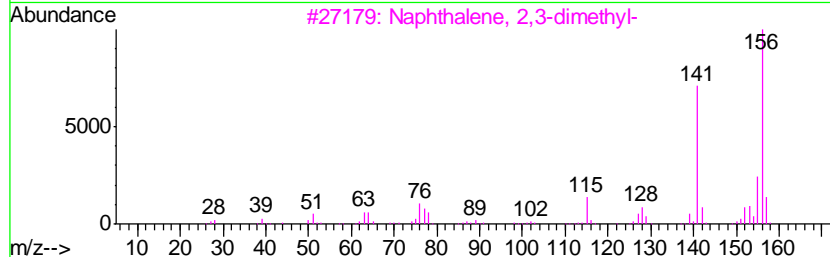
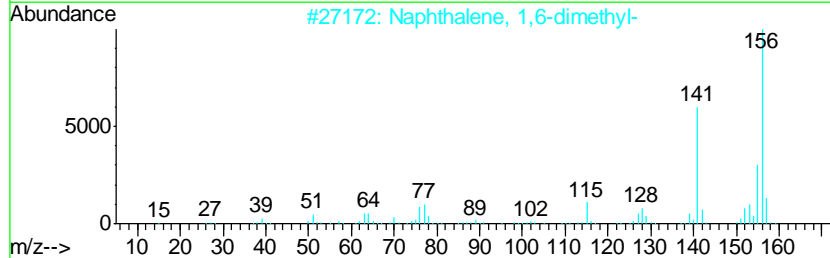
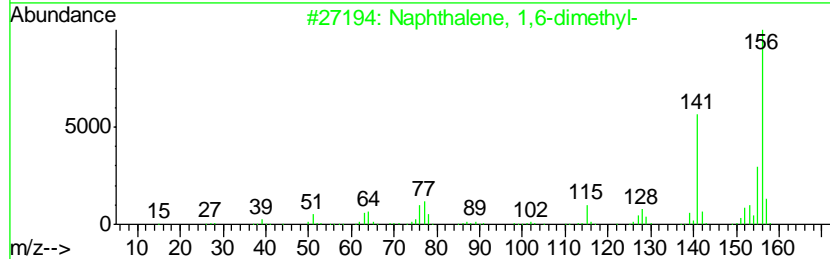
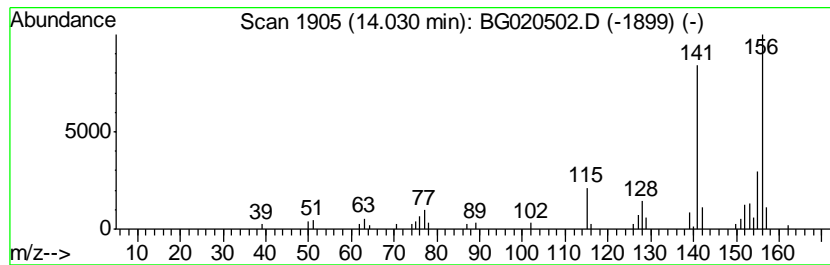
Quant Method : Z:\HPCHEM1\BNA G\METHODS\SOM02.2-EPA-BG122415.M
 Quant Title : SVOA CALIBRATION

TIC Library : C:\DATABASE\NIST02.L
 TIC Integration Parameters: LSCINT.P

 Peak Number 5 Naphthalene, 1,6-dimethyl- Concentration Rank 8

R.T.	EstConc	Area	Relative to ISTD	R.T.
14.03	4.17 ng/ul	67321	Acenaphthene-d10	14.71

Hit#	of	Tentative ID	MW	MolForm	CAS#	Qual
1	5	Naphthalene, 1,6-dimethyl-	156	C12H12	000575-43-9	97
2		Naphthalene, 1,6-dimethyl-	156	C12H12	000575-43-9	97
3		Naphthalene, 2,3-dimethyl-	156	C12H12	000581-40-8	96
4		Naphthalene, 1,5-dimethyl-	156	C12H12	000571-61-9	96
5		Naphthalene, 2,7-dimethyl-	156	C12H12	000582-16-1	96



Data Path : Z:\HPCHEM1\BNA G\DATA\BG122515\
 Data File : BG020502.D
 Acq On : 25 Dec 2015 13:11
 Operator : UM/SJ
 Sample : G4848-05DL 30X
 Misc :
 ALS Vial : 42 Sample Multiplier: 1

Instrument :
 BNA_G
 ClientSampleID :
 D9N51MEDL

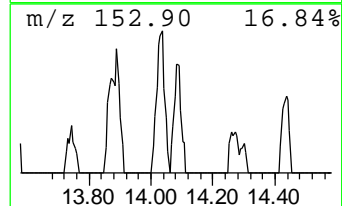
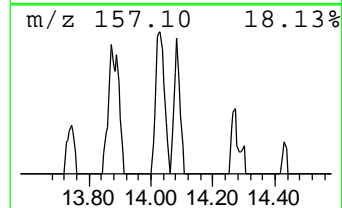
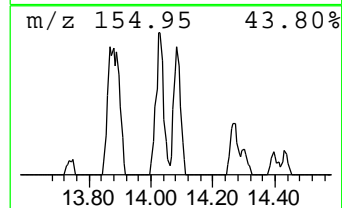
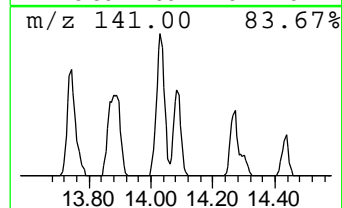
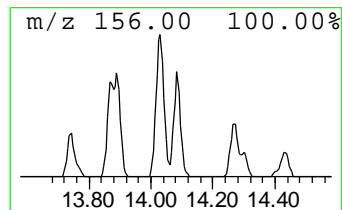
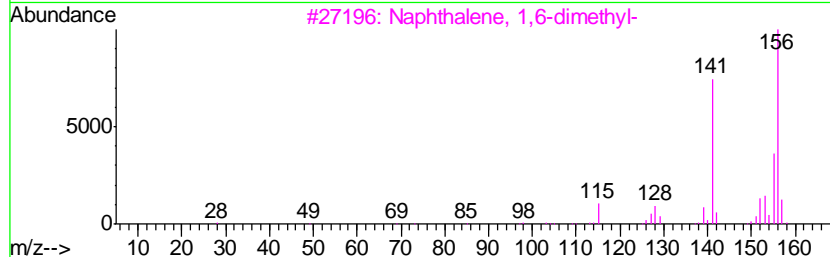
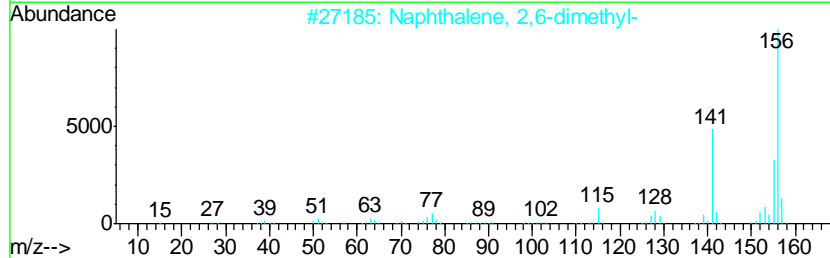
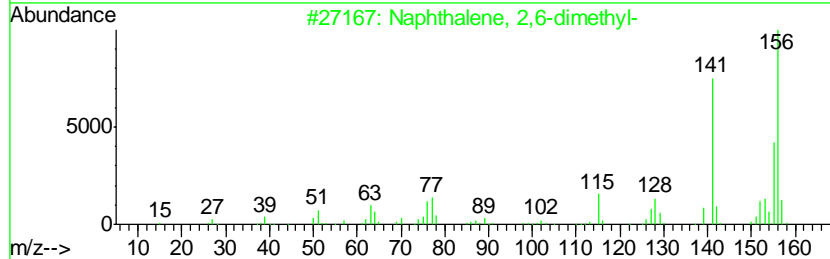
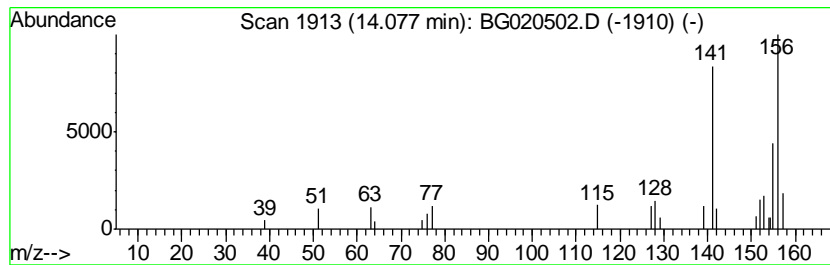
Quant Method : Z:\HPCHEM1\BNA G\METHODS\SOM02.2-EPA-BG122415.M
 Quant Title : SVOA CALIBRATION

TIC Library : C:\DATABASE\NIST02.L
 TIC Integration Parameters: LSCINT.P

 Peak Number 6 Naphthalene, 2,6-dimethyl- Concentration Rank 14

R.T.	EstConc	Area	Relative to ISTD	R.T.
14.08	2.74 ng/ul	44225	Acenaphthene-d10	14.71

Hit#	of	Tentative ID	MW	MolForm	CAS#	Qual
1	5	Naphthalene, 2,6-dimethyl-	156	C12H12	000581-42-0	95
2		Naphthalene, 2,6-dimethyl-	156	C12H12	000581-42-0	94
3		Naphthalene, 1,6-dimethyl-	156	C12H12	000575-43-9	94
4		Naphthalene, 2,3-dimethyl-	156	C12H12	000581-40-8	94
5		Naphthalene, 1,7-dimethyl-	156	C12H12	000575-37-1	93



Data Path : Z:\HPCHEM1\BNA G\DATA\BG122515\
 Data File : BG020502.D
 Acq On : 25 Dec 2015 13:11
 Operator : UM/SJ
 Sample : G4848-05DL 30X
 Misc :
 ALS Vial : 42 Sample Multiplier: 1

Instrument :
 BNA_G
 ClientSampleID :
 D9N51MEDL

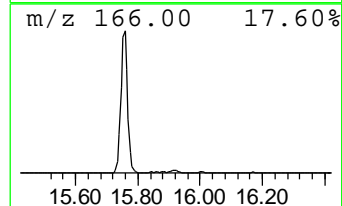
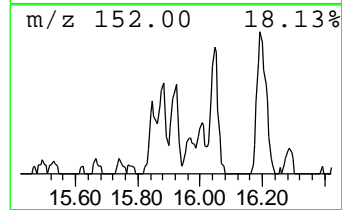
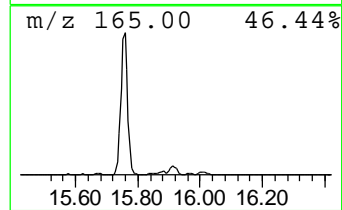
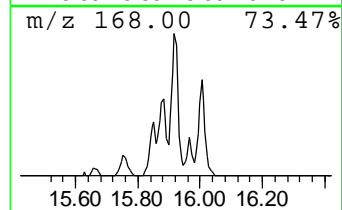
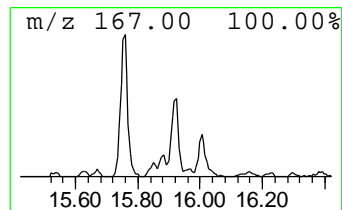
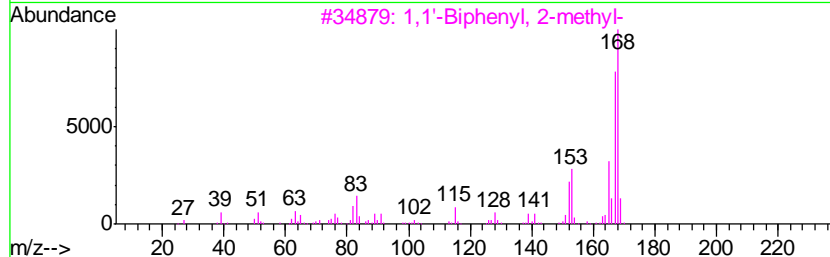
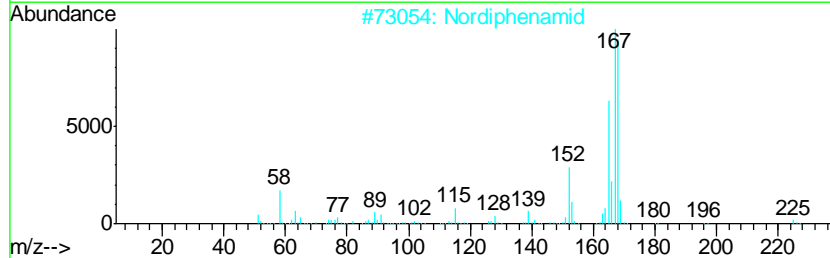
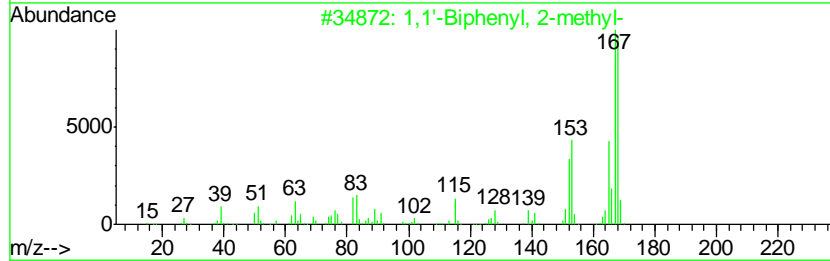
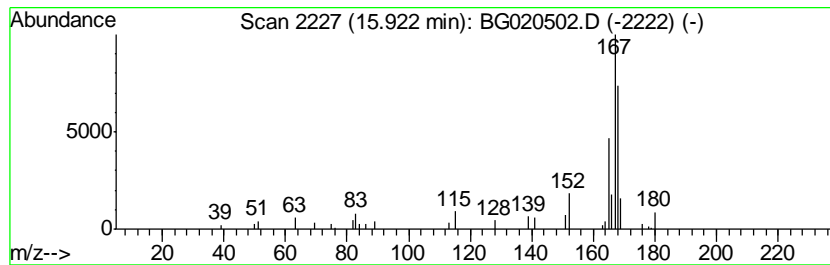
Quant Method : Z:\HPCHEM1\BNA G\METHODS\SOM02.2-EPA-BG122415.M
 Quant Title : SVOA CALIBRATION

TIC Library : C:\DATABASE\NIST02.L
 TIC Integration Parameters: LSCINT.P

 Peak Number 7 1,1'-Biphenyl, 2-methyl- Concentration Rank 9

R.T.	EstConc	Area	Relative to ISTD	R.T.
15.92	4.06 ng/ul	65632	Acenaphthene-d10	14.71

Hit#	of	Tentative ID	MW	MolForm	CAS#	Qual
1	5	1,1'-Biphenyl, 2-methyl-	168	C13H12	000643-58-3	86
2		Nordiphenamid	225	C15H15NO	000954-21-2	78
3		1,1'-Biphenyl, 2-methyl-	168	C13H12	000643-58-3	70
4		Diphenylmethane	168	C13H12	000101-81-5	64
5		Diphenylmethane	168	C13H12	000101-81-5	64



Data Path : Z:\HPCHEM1\BNA G\DATA\BG122515\
 Data File : BG020502.D
 Acq On : 25 Dec 2015 13:11
 Operator : UM/SJ
 Sample : G4848-05DL 30X
 Misc :
 ALS Vial : 42 Sample Multiplier: 1

Instrument :
 BNA_G
 ClientSampleID :
 D9N51MEDL

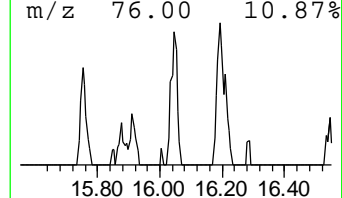
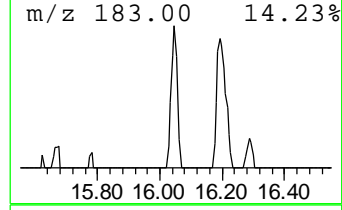
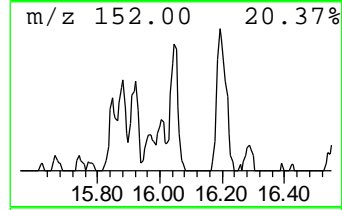
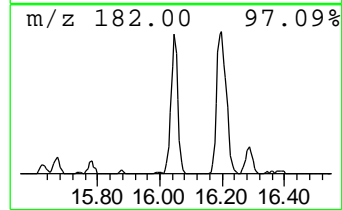
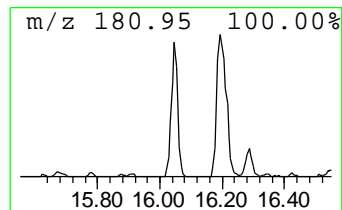
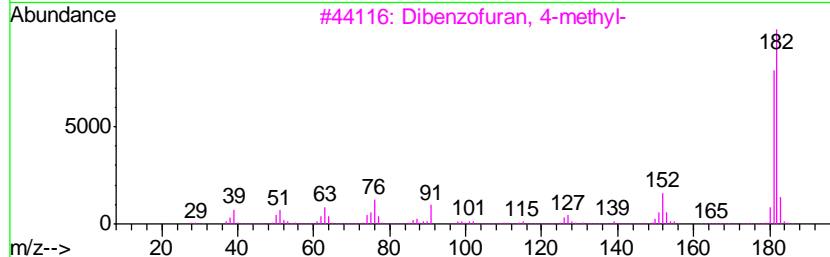
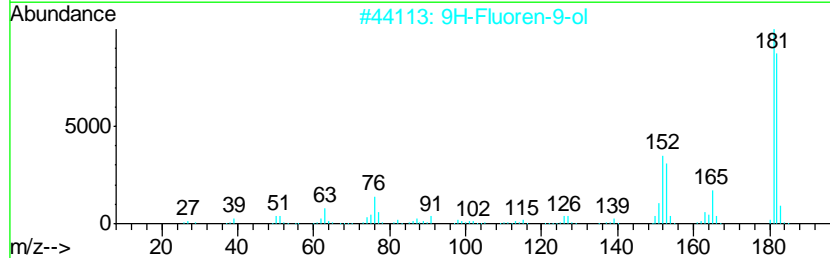
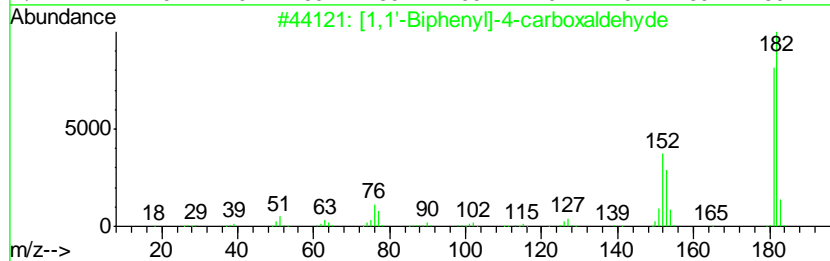
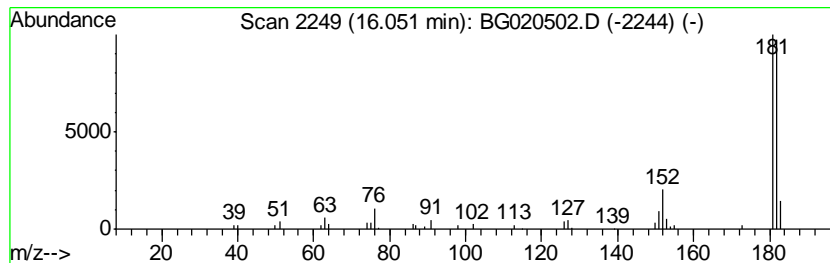
Quant Method : Z:\HPCHEM1\BNA G\METHODS\SOM02.2-EPA-BG122415.M
 Quant Title : SVOA CALIBRATION

TIC Library : C:\DATABASE\NIST02.L
 TIC Integration Parameters: LSCINT.P

 Peak Number 8 [1,1'-Biphenyl]-4-carboxald... Concentration Rank 7

R.T.	EstConc	Area	Relative to ISTD	R.T.
16.05	4.23 ng/ul	68255	Acenaphthene-d10	14.71

Hit#	of	Tentative ID	MW	MolForm	CAS#	Qual
1	5	[1,1'-Biphenyl]-4-carboxaldehyde	182	C13H10O	003218-36-8	90
2		9H-Fluoren-9-ol	182	C13H10O	001689-64-1	86
3		Dibenzofuran, 4-methyl-	182	C13H10O	007320-53-8	81
4		9H-Fluoren-9-ol	182	C13H10O	001689-64-1	78
5		2,4,6-Cycloheptatrien-1-one, 2-p...	182	C13H10O	014562-09-5	78



Data Path : Z:\HPCHEM1\BNA G\DATA\BG122515\
 Data File : BG020502.D
 Acq On : 25 Dec 2015 13:11
 Operator : UM/SJ
 Sample : G4848-05DL 30X
 Misc :
 ALS Vial : 42 Sample Multiplier: 1

Instrument :
 BNA_G
 ClientSampleID :
 D9N51MEDL

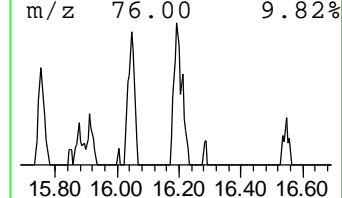
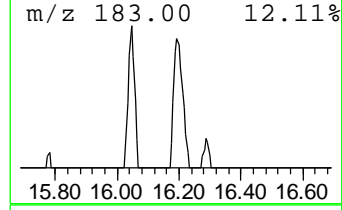
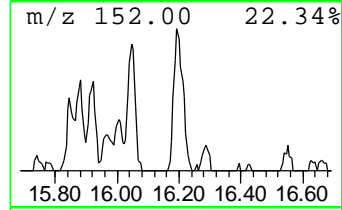
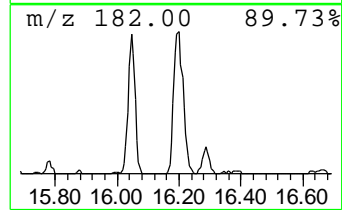
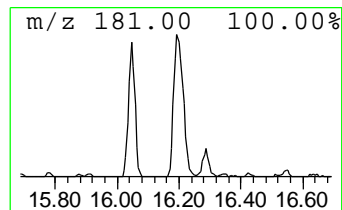
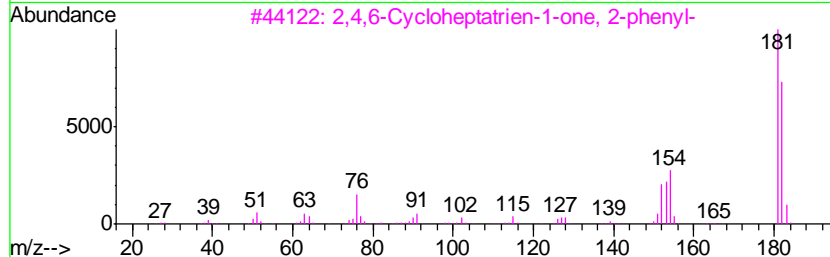
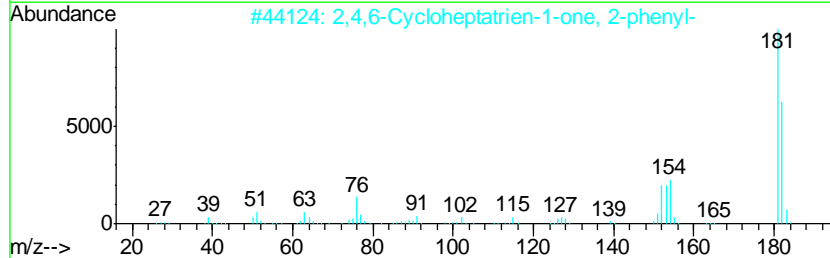
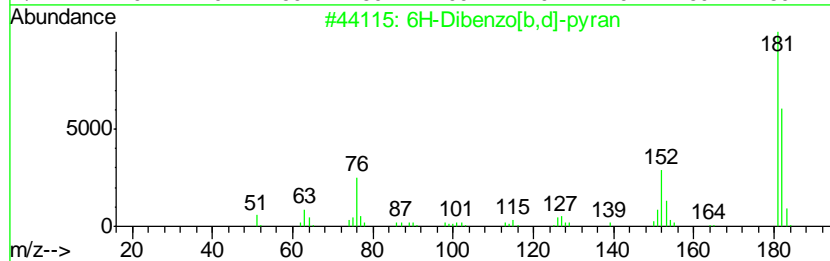
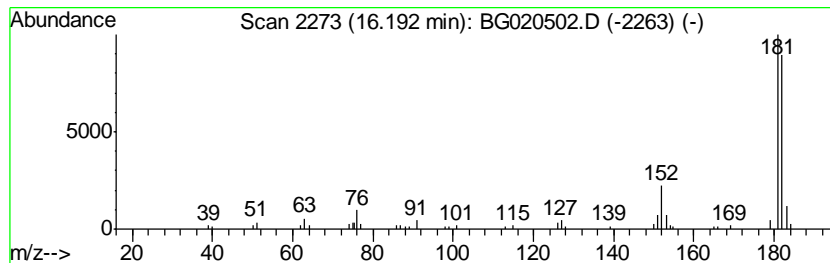
Quant Method : Z:\HPCHEM1\BNA G\METHODS\SOM02.2-EPA-BG122415.M
 Quant Title : SVOA CALIBRATION

TIC Library : C:\DATABASE\NIST02.L
 TIC Integration Parameters: LSCINT.P

 Peak Number 9 6H-Dibenzo[b,d]-pyran Concentration Rank 6

R.T.	EstConc	Area	Relative to ISTD	R.T.
16.19	4.67 ng/ul	101054	Phenanthrene-d10	17.46

Hit#	of	Tentative ID	MW	MolForm	CAS#	Qual
1	5	6H-Dibenzo[b,d]-pyran	182	C13H10O	000229-95-8	91
2		2,4,6-Cycloheptatrien-1-one, 2-phenyl-	182	C13H10O	014562-09-5	90
3		2,4,6-Cycloheptatrien-1-one, 2-phenyl-	182	C13H10O	014562-09-5	87
4		9H-Fluoren-9-ol	182	C13H10O	001689-64-1	86
5		Dibenzofuran, 4-methyl-	182	C13H10O	007320-53-8	64



Data Path : Z:\HPCHEM1\BNA G\DATA\BG122515\
 Data File : BG020502.D
 Acq On : 25 Dec 2015 13:11
 Operator : UM/SJ
 Sample : G4848-05DL 30X
 Misc :
 ALS Vial : 42 Sample Multiplier: 1

Instrument :
 BNA_G
 ClientSampleID :
 D9N51MEDL

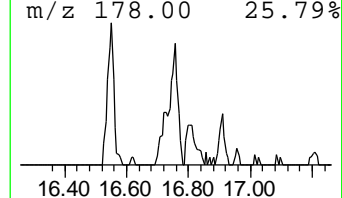
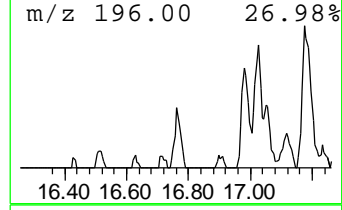
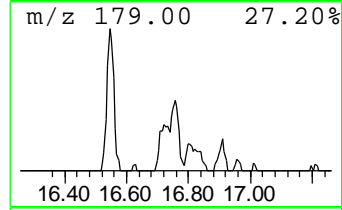
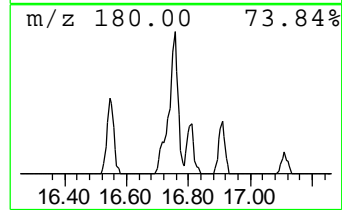
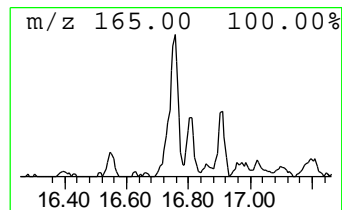
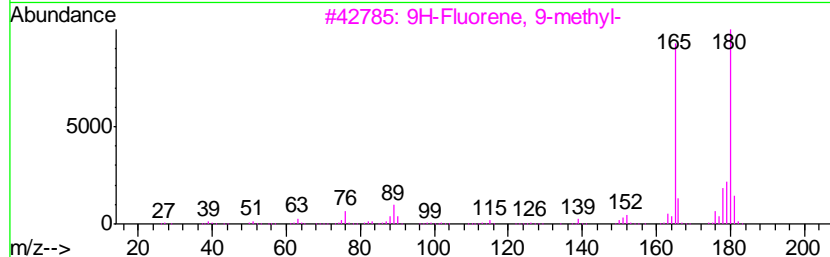
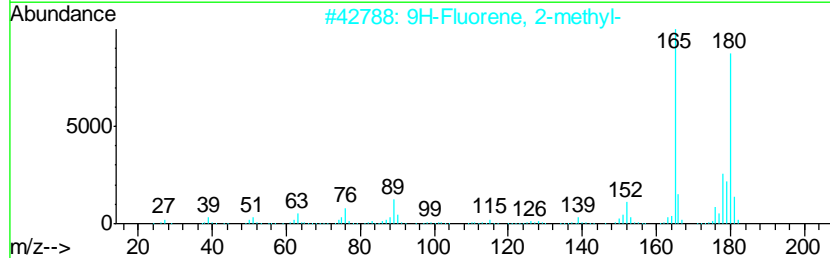
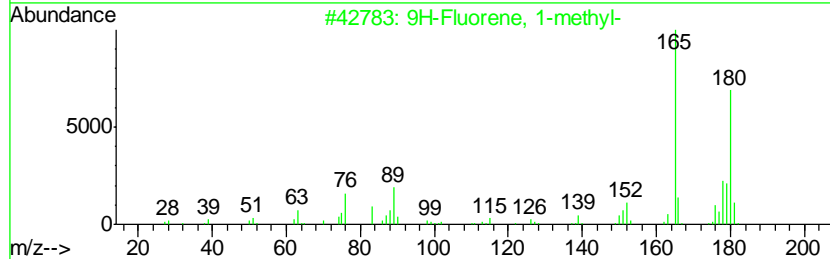
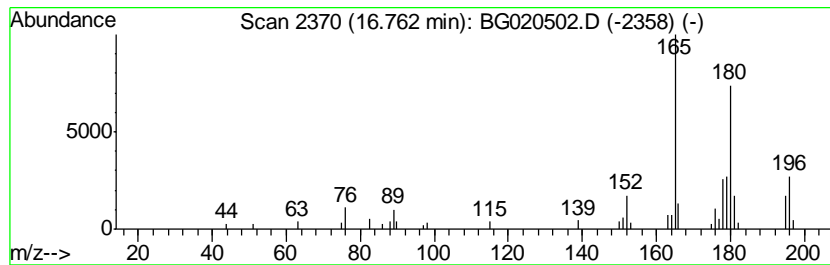
Quant Method : Z:\HPCHEM1\BNA G\METHODS\SOM02.2-EPA-BG122415.M
 Quant Title : SVOA CALIBRATION

TIC Library : C:\DATABASE\NIST02.L
 TIC Integration Parameters: LSCINT.P

 Peak Number 10 9H-Fluorene, 1-methyl- Concentration Rank 11

R.T.	EstConc	Area	Relative to ISTD	R.T.
16.76	3.68 ng/ul	79690	Phenanthrene-d10	17.46

Hit#	of	Tentative ID	MW	MolForm	CAS#	Qual
1	5	9H-Fluorene, 1-methyl-	180	C14H12	001730-37-6	95
2		9H-Fluorene, 2-methyl-	180	C14H12	001430-97-3	90
3		9H-Fluorene, 9-methyl-	180	C14H12	002523-37-7	89
4		4a,9a-Methano-9H-fluorene	180	C14H12	019540-84-2	86
5		9H-Fluorene, 1-methyl-	180	C14H12	001730-37-6	81



Data Path : Z:\HPCHEM1\BNA G\DATA\BG122515\
 Data File : BG020502.D
 Acq On : 25 Dec 2015 13:11
 Operator : UM/SJ
 Sample : G4848-05DL 30X
 Misc :
 ALS Vial : 42 Sample Multiplier: 1

Instrument :
 BNA_G
 ClientSampleID :
 D9N51MEDL

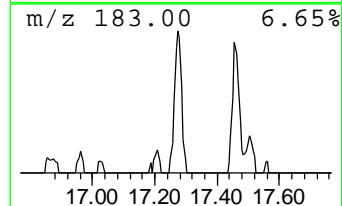
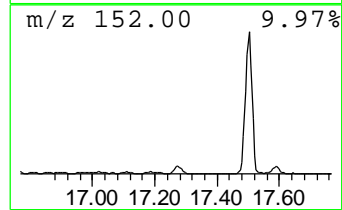
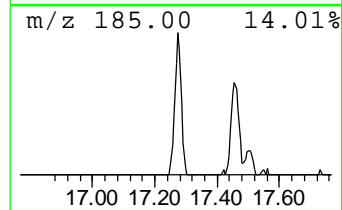
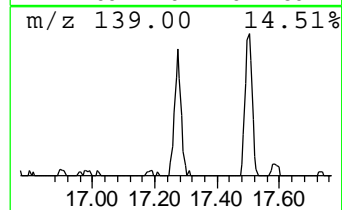
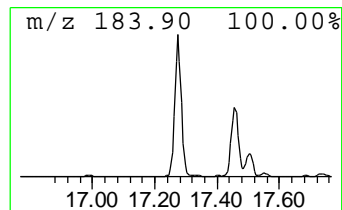
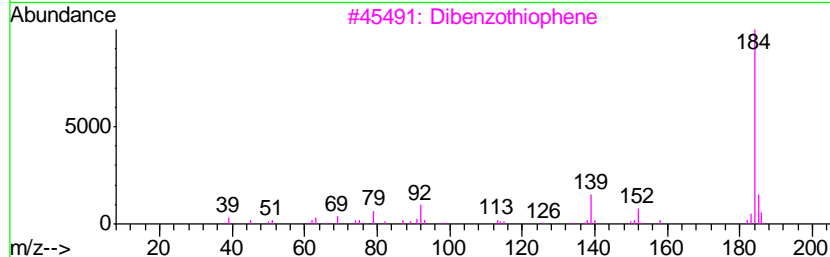
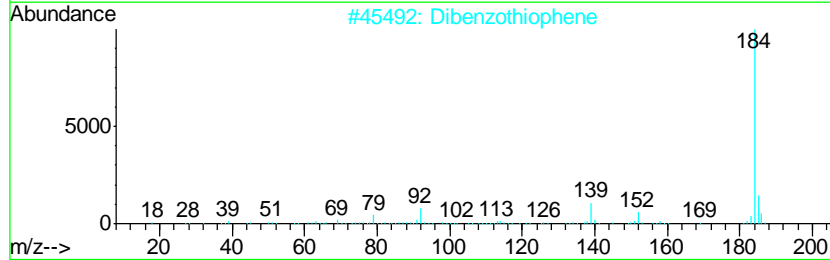
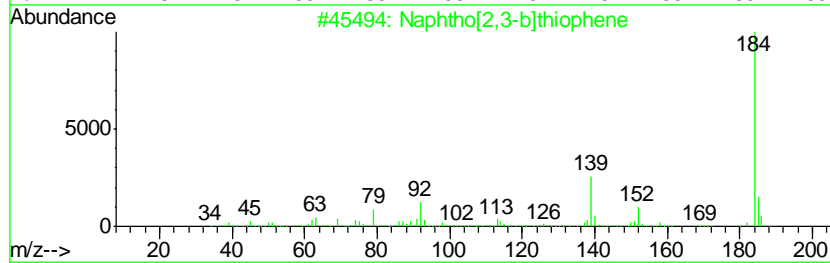
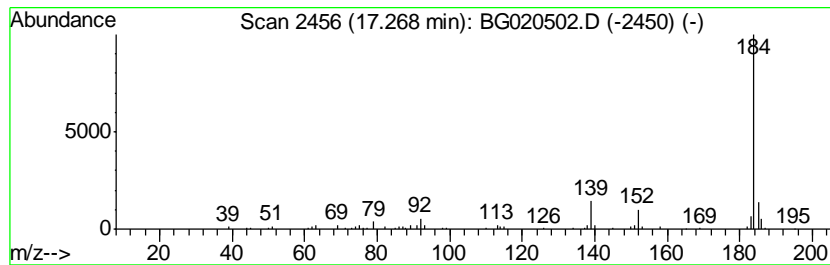
Quant Method : Z:\HPCHEM1\BNA G\METHODS\SOM02.2-EPA-BG122415.M
 Quant Title : SVOA CALIBRATION

TIC Library : C:\DATABASE\NIST02.L
 TIC Integration Parameters: LSCINT.P

 Peak Number 11 Naphtho[2,3-b]thiophene Concentration Rank 4

R.T.	EstConc	Area	Relative to ISTD	R.T.
17.27	5.12 ng/ul	110757	Phenanthrene-d10	17.46

Hit#	of	Tentative ID	MW	MolForm	CAS#	Qual
1	5	Naphtho[2,3-b]thiophene	184	C12H8S	000268-77-9	94
2		Dibenzothiophene	184	C12H8S	000132-65-0	94
3		Dibenzothiophene	184	C12H8S	000132-65-0	94
4		Dibenzothiophene	184	C12H8S	000132-65-0	93
5		Dibenzothiophene	184	C12H8S	000132-65-0	91



Data Path : Z:\HPCHEM1\BNA G\DATA\BG122515\
 Data File : BG020502.D
 Acq On : 25 Dec 2015 13:11
 Operator : UM/SJ
 Sample : G4848-05DL 30X
 Misc :
 ALS Vial : 42 Sample Multiplier: 1

Instrument :
 BNA_G
 ClientSampleID :
 D9N51MEDL

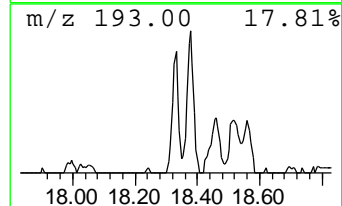
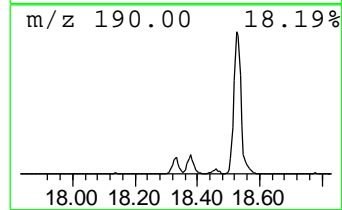
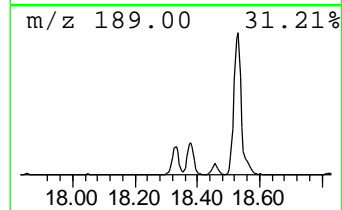
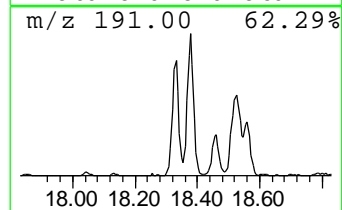
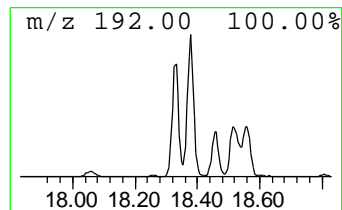
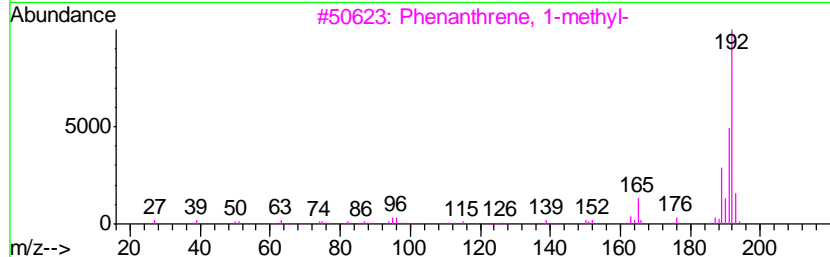
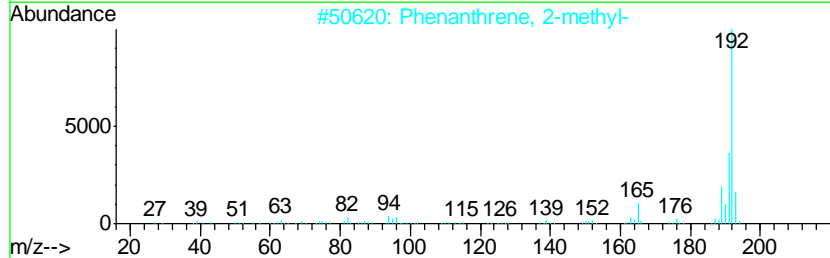
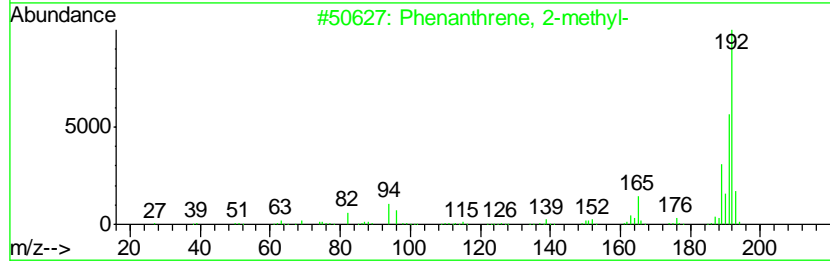
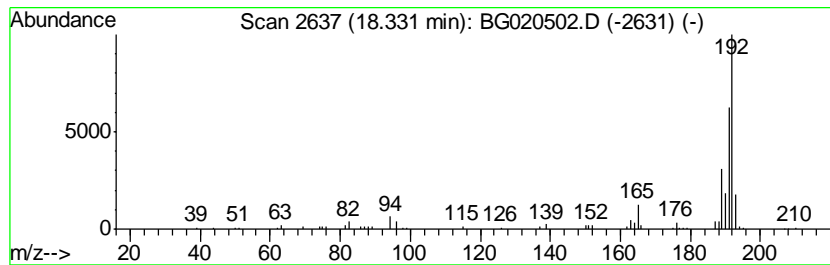
Quant Method : Z:\HPCHEM1\BNA G\METHODS\SOM02.2-EPA-BG122415.M
 Quant Title : SVOA CALIBRATION

TIC Library : C:\DATABASE\NIST02.L
 TIC Integration Parameters: LSCINT.P

 Peak Number 12 Phenanthrene, 2-methyl- Concentration Rank 5

R.T.	EstConc	Area	Relative to ISTD	R.T.
18.33	5.00 ng/ul	108106	Phenanthrene-d10	17.46

Hit#	of	Tentative ID	MW	MolForm	CAS#	Qual
1	5	Phenanthrene, 2-methyl-	192	C15H12	002531-84-2	95
2		Phenanthrene, 2-methyl-	192	C15H12	002531-84-2	95
3		Phenanthrene, 1-methyl-	192	C15H12	000832-69-9	95
4		Anthracene, 2-methyl-	192	C15H12	000613-12-7	94
5		Anthracene, 1-methyl-	192	C15H12	000610-48-0	93



Data Path : Z:\HPCHEM1\BNA G\DATA\BG122515\
 Data File : BG020502.D
 Acq On : 25 Dec 2015 13:11
 Operator : UM/SJ
 Sample : G4848-05DL 30X
 Misc :
 ALS Vial : 42 Sample Multiplier: 1

Instrument :
 BNA_G
 ClientSampleID :
 D9N51MEDL

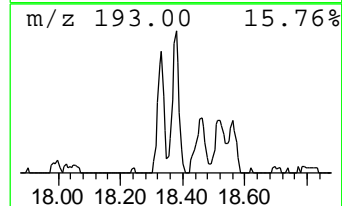
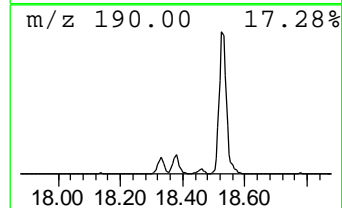
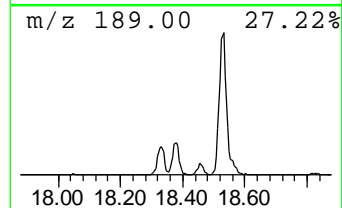
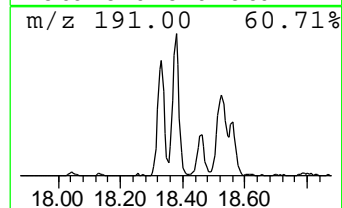
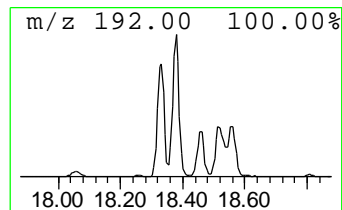
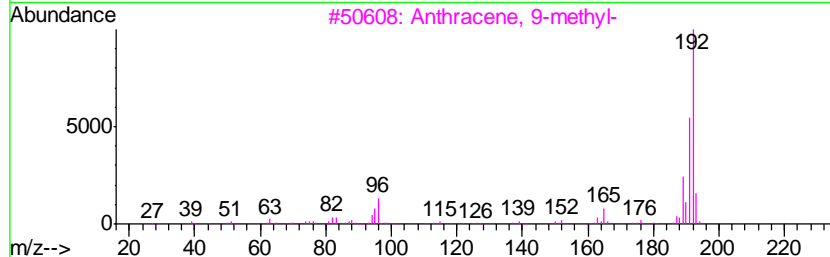
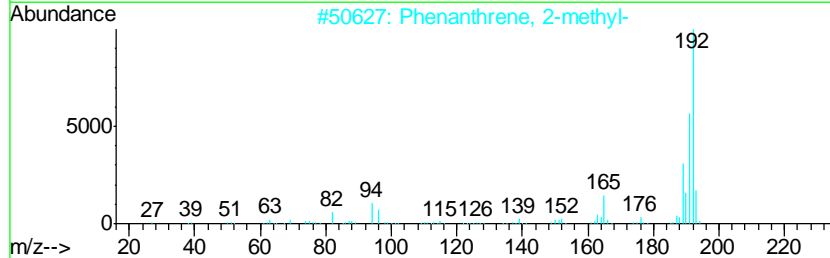
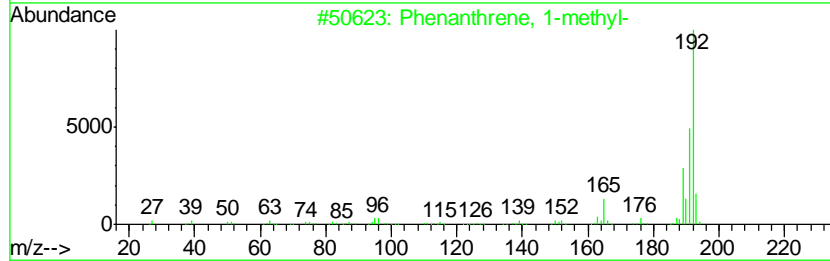
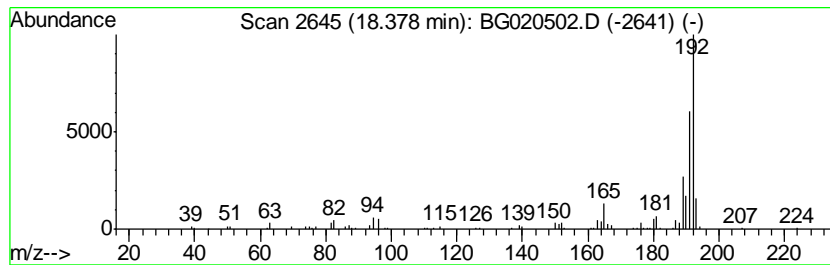
Quant Method : Z:\HPCHEM1\BNA G\METHODS\SOM02.2-EPA-BG122415.M
 Quant Title : SVOA CALIBRATION

TIC Library : C:\DATABASE\NIST02.L
 TIC Integration Parameters: LSCINT.P

 Peak Number 13 Phenanthrene, 1-methyl- Concentration Rank 3

R.T.	EstConc	Area	Relative to ISTD	R.T.
18.38	6.50 ng/ul	140673	Phenanthrene-d10	17.46

Hit#	of	Tentative ID	MW	MolForm	CAS#	Qual
1	5	Phenanthrene, 1-methyl-	192	C15H12	000832-69-9	97
2		Phenanthrene, 2-methyl-	192	C15H12	002531-84-2	95
3		Anthracene, 9-methyl-	192	C15H12	000779-02-2	95
4		Phenanthrene, 4-methyl-	192	C15H12	000832-64-4	95
5		Phenanthrene, 2-methyl-	192	C15H12	002531-84-2	95



Data Path : Z:\HPCHEM1\BNA G\DATA\BG122515\
 Data File : BG020502.D
 Acq On : 25 Dec 2015 13:11
 Operator : UM/SJ
 Sample : G4848-05DL 30X
 Misc :
 ALS Vial : 42 Sample Multiplier: 1

Instrument :
 BNA_G
 ClientSampleId :
 D9N51MEDL

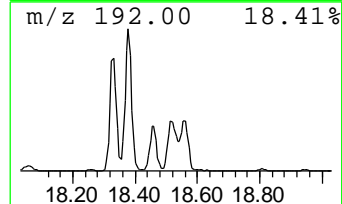
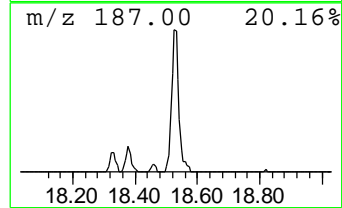
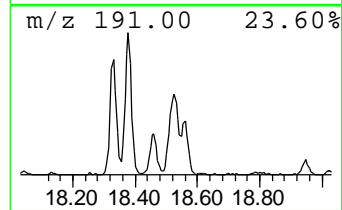
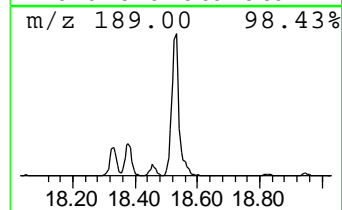
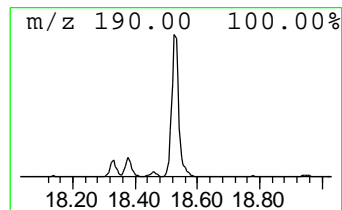
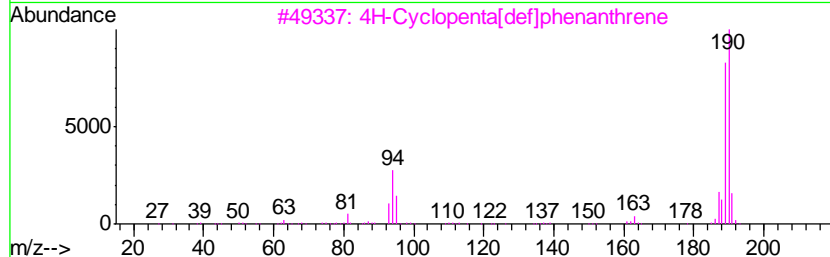
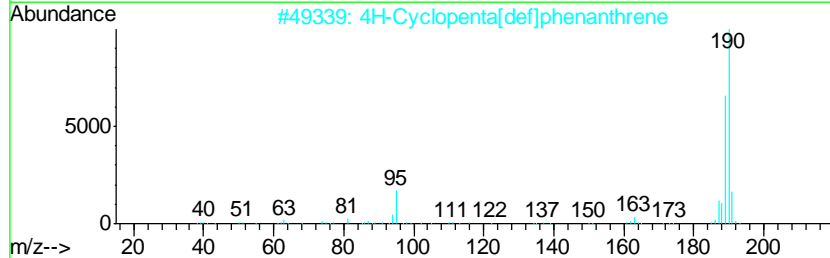
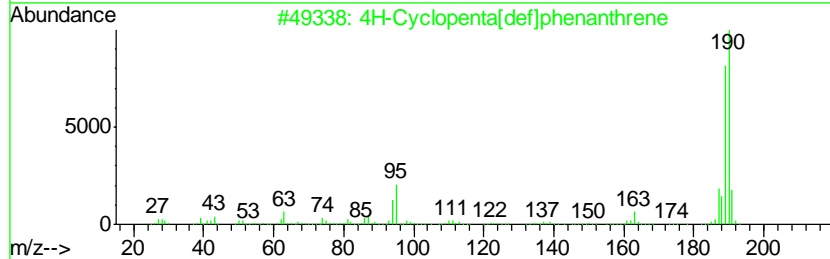
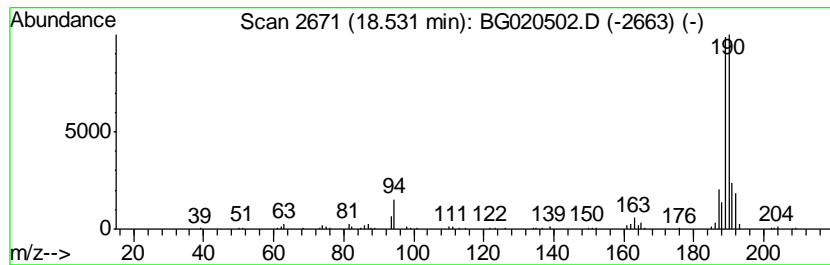
Quant Method : Z:\HPCHEM1\BNA G\METHODS\SOM02.2-EPA-BG122415.M
 Quant Title : SVOA CALIBRATION

TIC Library : C:\DATABASE\NIST02.L
 TIC Integration Parameters: LSCINT.P

 Peak Number 15 4H-Cyclopenta[def]phenanthrene Concentration Rank 2

R.T.	EstConc	Area	Relative to ISTD	R.T.
18.53	11.15 ng/ul	241101	Phenanthrene-d10	17.46

Hit#	of	Tentative ID	MW	MolForm	CAS#	Qual
1	5	4H-Cyclopenta[def]phenanthrene	190	C15H10	000203-64-5	89
2		4H-Cyclopenta[def]phenanthrene	190	C15H10	000203-64-5	81
3		4H-Cyclopenta[def]phenanthrene	190	C15H10	000203-64-5	81
4		Thiophene-3-carboxaldehyde, 5-ch...	190	C5H4BClO3S	036155-87-0	40
5		2,3,5,6-Tetramethylterephthalald...	190	C12H14O2	007072-01-7	16



Data Path : Z:\HPCHEM1\BNA G\DATA\BG122515\
 Data File : BG020502.D
 Acq On : 25 Dec 2015 13:11
 Operator : UM/SJ
 Sample : G4848-05DL 30X
 Misc :
 ALS Vial : 42 Sample Multiplier: 1

Instrument :
 BNA_G
 ClientSampleID :
 D9N51MEDL

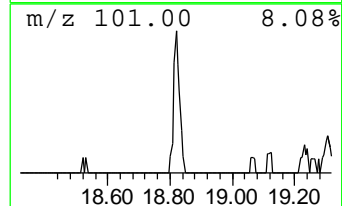
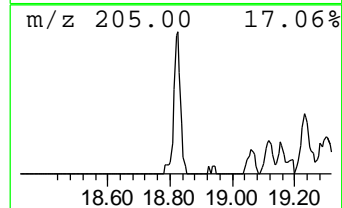
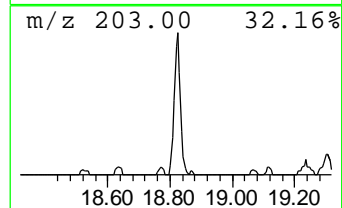
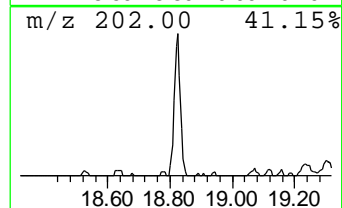
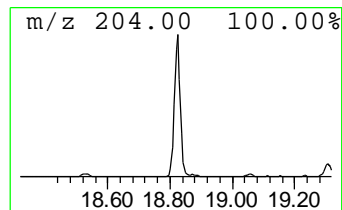
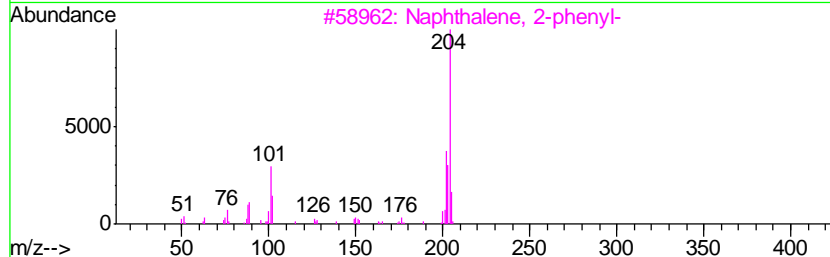
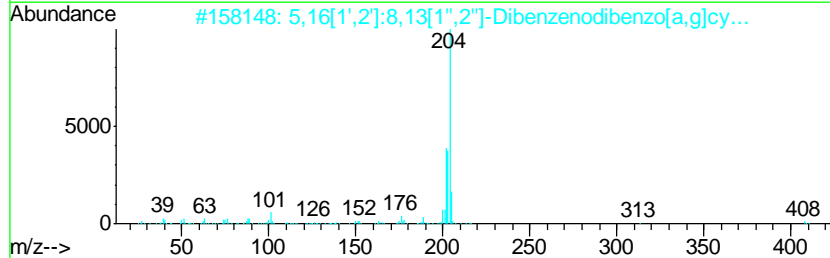
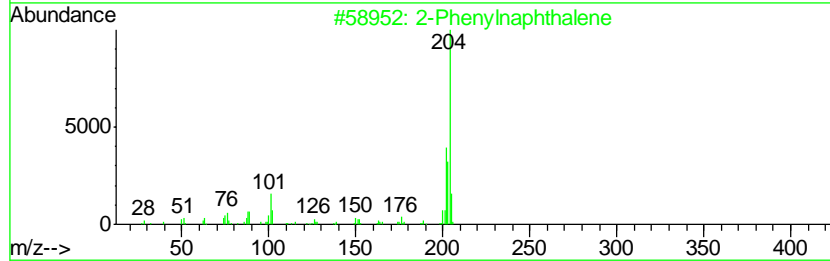
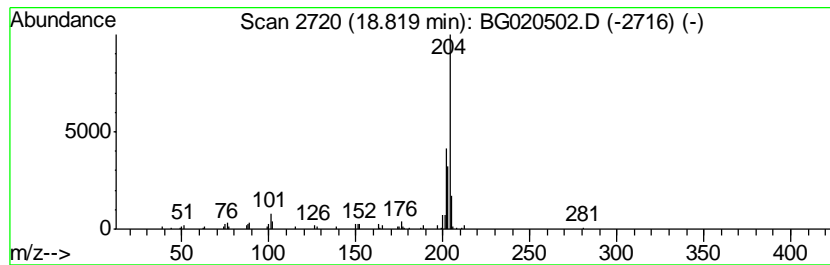
Quant Method : Z:\HPCHEM1\BNA G\METHODS\SOM02.2-EPA-BG122415.M
 Quant Title : SVOA CALIBRATION

TIC Library : C:\DATABASE\NIST02.L
 TIC Integration Parameters: LSCINT.P

 Peak Number 16 2-Phenylnaphthalene Concentration Rank 10

R.T.	EstConc	Area	Relative to ISTD	R.T.
18.82	3.87 ng/ul	83674	Phenanthrene-d10	17.46

Hit#	of	Tentative ID	MW	MolForm	CAS#	Qual
1	5	2-Phenylnaphthalene	204	C16H12	035465-71-5	93
2		5,16[1',2']: ^{8,13} [1'',2'']-Dibenz...	408	C32H24	005672-97-9	91
3		Naphthalene, 2-phenyl-	204	C16H12	000612-94-2	70
4		Naphthalene, 2-phenyl-	204	C16H12	000612-94-2	64
5		Naphthalene, 2-phenyl-	204	C16H12	000612-94-2	64



Data Path : Z:\HPCHEM1\BNA G\DATA\BG122515\
 Data File : BG020502.D
 Acq On : 25 Dec 2015 13:11
 Operator : UM/SJ
 Sample : G4848-05DL 30X
 Misc :
 ALS Vial : 42 Sample Multiplier: 1

Instrument :
 BNA_G
 ClientSampleID :
 D9N51MEDL

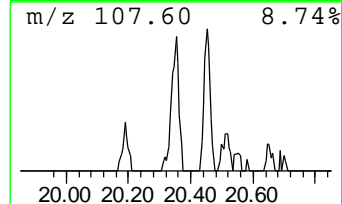
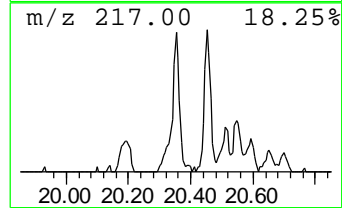
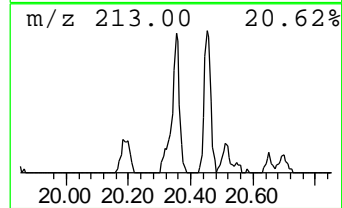
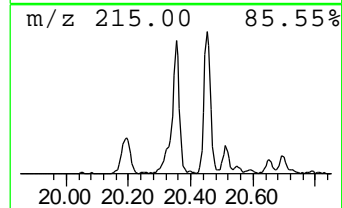
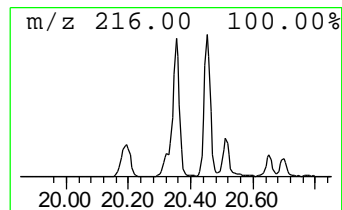
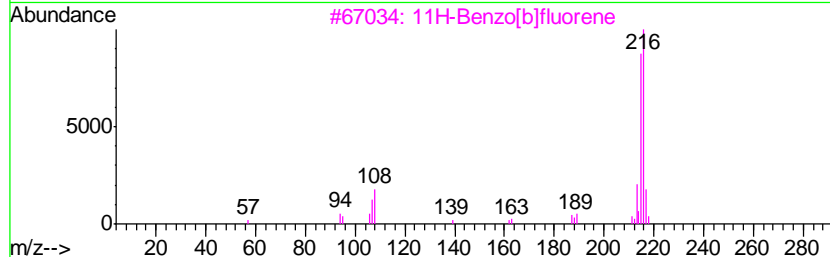
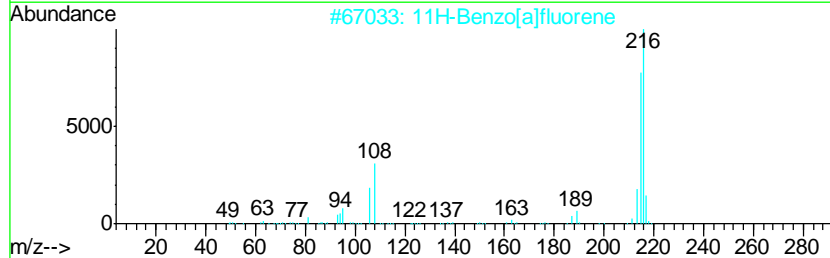
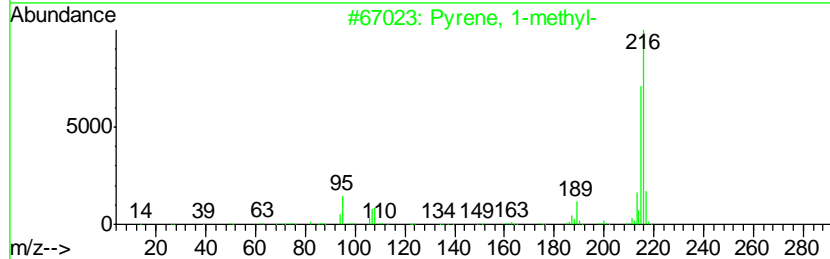
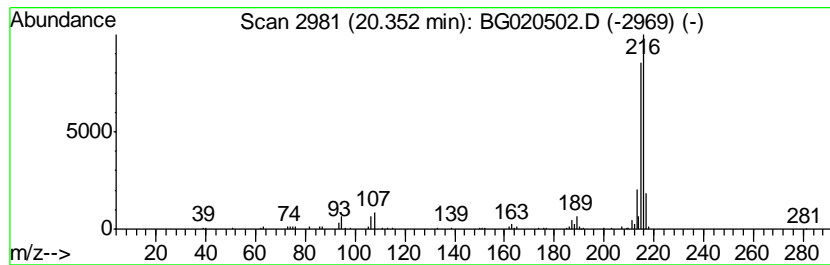
Quant Method : Z:\HPCHEM1\BNA G\METHODS\SOM02.2-EPA-BG122415.M
 Quant Title : SVOA CALIBRATION

TIC Library : C:\DATABASE\NIST02.L
 TIC Integration Parameters: LSCINT.P

 Peak Number 17 Pyrene, 1-methyl- Concentration Rank 12

R.T.	EstConc	Area	Relative to ISTD	R.T.
20.35	3.57 ng/ul	140600	Chrysene-d12	21.73

Hit#	of	Tentative ID	MW	MolForm	CAS#	Qual
1	5	Pyrene, 1-methyl-	216	C17H12	002381-21-7	94
2		11H-Benzo[a]fluorene	216	C17H12	000238-84-6	94
3		11H-Benzo[b]fluorene	216	C17H12	000243-17-4	93
4		11H-Benzo[b]fluorene	216	C17H12	000243-17-4	91
5		Pyrene, 1-methyl-	216	C17H12	002381-21-7	91



Data Path : Z:\HPCHEM1\BNA G\DATA\BG122515\
 Data File : BG020502.D
 Acq On : 25 Dec 2015 13:11
 Operator : UM/SJ
 Sample : G4848-05DL 30X
 Misc :
 ALS Vial : 42 Sample Multiplier: 1

Instrument :
 BNA_G
 ClientSampleID :
 D9N51MEDL

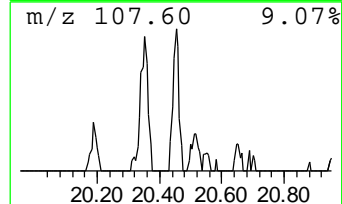
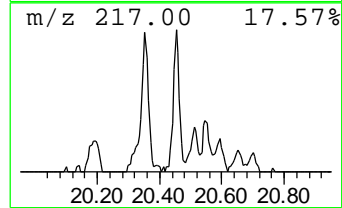
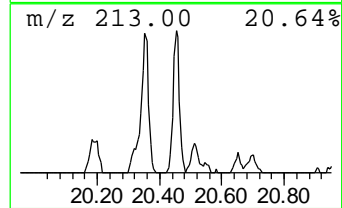
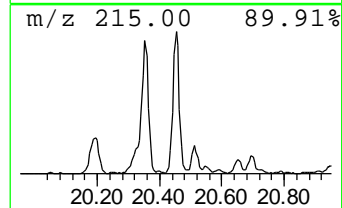
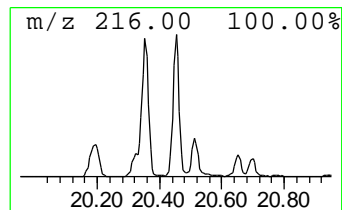
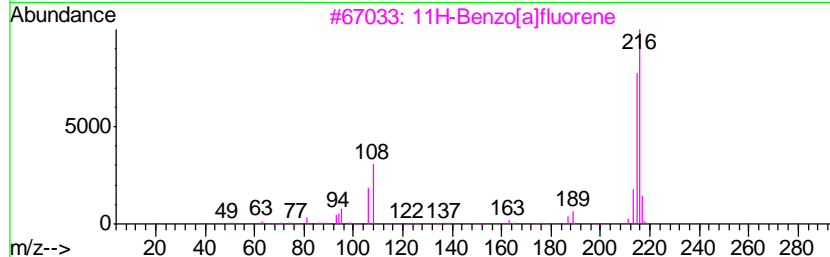
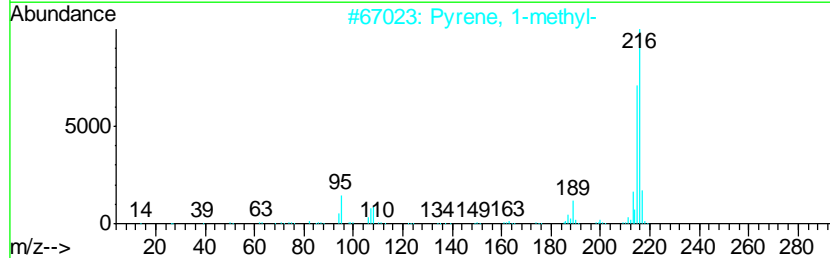
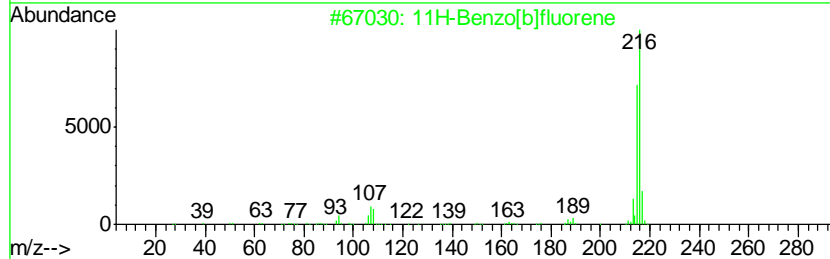
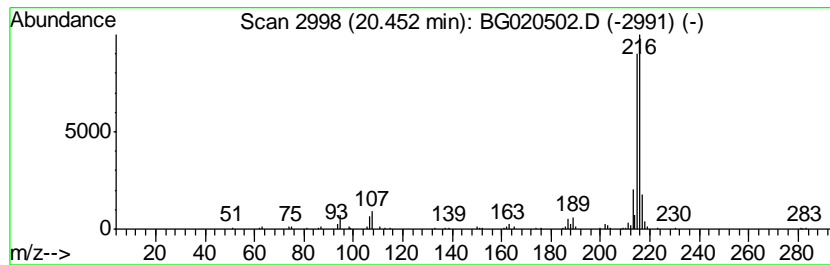
Quant Method : Z:\HPCHEM1\BNA G\METHODS\SOM02.2-EPA-BG122415.M
 Quant Title : SVOA CALIBRATION

TIC Library : C:\DATABASE\NIST02.L
 TIC Integration Parameters: LSCINT.P

 Peak Number 18 11H-Benzo[b]fluorene Concentration Rank 13

R.T.	EstConc	Area	Relative to ISTD	R.T.
20.45	3.03 ng/ul	119345	Chrysene-d12	21.73

Hit#	of	Tentative ID	MW	MolForm	CAS#	Qual
1	5	11H-Benzo[b]fluorene	216	C17H12	000243-17-4	97
2		Pyrene, 1-methyl-	216	C17H12	002381-21-7	94
3		11H-Benzo[a]fluorene	216	C17H12	000238-84-6	90
4		11H-Benzo[a]fluorene	216	C17H12	000238-84-6	87
5		11H-Benzo[b]fluorene	216	C17H12	000243-17-4	86



Data Path : Z:\HPCHEM1\BNA_G\DATA\BG122515\
 Data File : BG020502.D
 Acq On : 25 Dec 2015 13:11
 Operator : UM/SJ
 Sample : G4848-05DL 30X
 Misc :
 ALS Vial : 42 Sample Multiplier: 1

Instrument :
 BNA_G
 ClientSampleId :
 D9N51MEDL

Quant Method : Z:\HPCHEM1\BNA_G\METHODS\SOM02.2-EPA-BG122415.M
 Quant Title : SVOA CALIBRATION

TIC Library : C:\DATABASE\NIST02.L
 TIC Integration Parameters: LSCINT.P

TIC Top Hit name	RT	EstConc	Units	Response	--Internal Standard--			
					#	RT	Resp	Conc
Benzene, 1-propynyl-	8.62	2.5	ng/ul	14176	1	8.08	114135	20.0
Naphthalene, 1-me...	12.76	13.2	ng/ul	129146	2	10.89	196194	20.0
Naphthalene, 1,4-...	13.88	2.7	ng/ul	42899	3	14.71	322961	20.0
Naphthalene, 1,6-...	14.03	4.2	ng/ul	67321	3	14.71	322961	20.0
Naphthalene, 2,6-...	14.08	2.7	ng/ul	44225	3	14.71	322961	20.0
1,1'-Biphenyl, 2-...	15.92	4.1	ng/ul	65632	3	14.71	322961	20.0
[1,1'-Biphenyl]-4...	16.05	4.2	ng/ul	68255	3	14.71	322961	20.0
6H-Dibenzo[b,d]-p...	16.19	4.7	ng/ul	101054	4	17.46	432606	20.0
9H-Fluorene, 1-me...	16.76	3.7	ng/ul	79690	4	17.46	432606	20.0
Naphtho[2,3-b]thi...	17.27	5.1	ng/ul	110757	4	17.46	432606	20.0
Phenanthrene, 2-m...	18.33	5.0	ng/ul	108106	4	17.46	432606	20.0
Phenanthrene, 1-m...	18.38	6.5	ng/ul	140673	4	17.46	432606	20.0
4H-Cyclopenta[def...	18.53	11.2	ng/ul	241101	4	17.46	432606	20.0
2-Phenylnaphthalene	18.82	3.9	ng/ul	83674	4	17.46	432606	20.0
Pyrene, 1-methyl-	20.35	3.6	ng/ul	140600	5	21.73	788600	20.0
11H-Benzo[b]fluorene	20.45	3.0	ng/ul	119345	5	21.73	788600	20.0