

Data Path : Z:\HPCHEM1\BNA G\DATA\BG122515\
 Data File : BG020523.D
 Acq On : 26 Dec 2015 3:41
 Operator : UM/SJ
 Sample : G4802-02
 Misc :
 ALS Vial : 61 Sample Multiplier: 1

Instrument :
 BNA_G
 ClientSampleId :
 G9C84

Integration Parameters: LSCINT.P

Integrator: RTE
 Smoothing : OFF
 Sampling : 1
 Start Thrs: 0.2
 Stop Thrs : 0

Filtering: 5
 Min Area: 0.1 % of largest Peak
 Max Peaks: 100
 Peak Location: TOP

If leading or trailing edge < 100 prefer < Baseline drop else tangent >
 Peak separation: 5

Method : Z:\HPCHEM1\BNA G\METHODS\SOM02.2-EPA-BG122415.M
 Title : SVOA CALIBRATION

Signal : TIC

peak #	R.T. min	first scan	max scan	last scan	PK TY	peak height	corr. area	corr. % max.	% of total
1	2.946	16	18	24	rBV3	958	1588	0.27%	0.028%
2	3.093	37	43	53	rBV	22504	47250	8.00%	0.845%
3	3.175	53	57	63	rVV	13539	19886	3.37%	0.356%
4	3.445	100	103	108	rVB	2620	3593	0.61%	0.064%
5	3.739	151	153	157	rBV	965	1315	0.22%	0.024%
6	7.229	741	747	758	rBV	49438	89033	15.08%	1.592%
7	7.394	769	775	783	rBV	43850	72124	12.22%	1.290%
8	7.605	805	811	820	rBV	54051	89824	15.21%	1.606%
9	8.075	885	891	898	rBV	51749	87520	14.82%	1.565%
10	8.780	1005	1011	1023	rBV	68997	122376	20.73%	2.189%
11	9.245	1083	1090	1102	rBV	53342	99211	16.80%	1.774%
12	9.362	1105	1110	1113	rBV	647	1084	0.18%	0.019%
13	9.967	1206	1213	1223	rBV	49795	85209	14.43%	1.524%
14	10.514	1296	1306	1316	rBV	72561	132359	22.42%	2.367%
15	10.890	1363	1370	1377	rBV	79977	139781	23.68%	2.500%
16	11.025	1386	1393	1406	rBV	67793	128541	21.77%	2.299%
17	13.310	1778	1782	1785	rVB	1112	1570	0.27%	0.028%
18	14.109	1911	1918	1922	rBV	166436	245241	41.54%	4.386%
19	14.151	1922	1925	1934	rVB	86774	122671	20.78%	2.194%
20	14.403	1962	1968	1980	rVB	186986	283922	48.09%	5.078%
21	14.585	1995	1999	2001	rBB2	1006	995	0.17%	0.018%
22	14.709	2013	2020	2028	rBV2	139698	229744	38.91%	4.109%
23	14.909	2048	2054	2065	rBV	43537	79846	13.52%	1.428%
24	14.985	2065	2067	2069	rVV	1607	1698	0.29%	0.030%
25	15.008	2069	2071	2073	rVV2	912	951	0.16%	0.017%
26	15.484	2147	2152	2157	rBV	2118	2740	0.46%	0.049%
27	15.531	2157	2160	2164	rVB2	4603	5400	0.91%	0.097%
28	15.696	2181	2188	2197	rBV	260212	388532	65.81%	6.949%
29	15.813	2202	2208	2214	rBV	61278	88346	14.96%	1.580%
30	15.931	2222	2228	2233	rBV3	3642	4931	0.84%	0.088%
31	16.389	2303	2306	2310	rBV	7131	10447	1.77%	0.187%
32	16.583	2334	2339	2341	rBB	1600	1833	0.31%	0.033%
33	16.730	2361	2364	2366	rBV	1048	1087	0.18%	0.019%
34	16.900	2389	2393	2397	rBV	773	1079	0.18%	0.019%

Data Path : Z:\HPCHEM1\BNA G\DATA\BG122515\
 Data File : BG020523.D
 Acq On : 26 Dec 2015 3:41
 Operator : UM/SJ
 Sample : G4802-02
 Misc :
 ALS Vial : 61 Sample Multiplier: 1

Instrument :
 BNA_G
 ClientSampleId :
 G9C84

Integration Parameters: LSCINT.P

Integrator: RTE
 Smoothing : OFF
 Sampling : 1
 Start Thrs: 0.2
 Stop Thrs : 0

Filtering: 5
 Min Area: 0.1 % of largest Peak
 Max Peaks: 100
 Peak Location: TOP

If leading or trailing edge < 100 prefer < Baseline drop else tangent >
 Peak separation: 5

Method : Z:\HPCHEM1\BNA G\METHODS\SOM02.2-EPA-BG122415.M
 Title : SVOA CALIBRATION

35	17.182	2437	2441	2446	rBV2	7195	9109	1.54%	0.163%
36	17.235	2446	2450	2455	rVB4	2586	4148	0.70%	0.074%
37	17.453	2481	2487	2493	rVV	211860	314319	53.24%	5.621%
38	17.494	2493	2494	2498	rVV2	5866	5867	0.99%	0.105%
39	17.552	2498	2504	2515	rVV	296866	445788	75.50%	7.973%
40	17.729	2531	2534	2536	rVB2	919	1003	0.17%	0.018%
41	17.811	2545	2548	2551	rVV3	3200	4611	0.78%	0.082%
42	17.834	2551	2552	2555	rVV	1324	1212	0.21%	0.022%
43	17.923	2563	2567	2574	rVB3	5704	7586	1.28%	0.136%
44	18.322	2631	2635	2641	rBV2	10635	14897	2.52%	0.266%
45	18.399	2646	2648	2653	rVB	1072	1246	0.21%	0.022%
46	18.610	2681	2684	2690	rVB	2672	3197	0.54%	0.057%
47	18.745	2704	2707	2710	rBV2	4559	4179	0.71%	0.075%
48	19.245	2788	2792	2795	rBV2	959	1457	0.25%	0.026%
49	19.468	2826	2830	2833	rBV	4020	5096	0.86%	0.091%
50	19.503	2833	2836	2842	rVB2	4546	5865	0.99%	0.105%
51	19.591	2845	2851	2853	rBV3	2930	3465	0.59%	0.062%
52	19.726	2870	2874	2877	rBV2	2132	2796	0.47%	0.050%
53	19.838	2883	2893	2904	rBV	390730	590415	100.00%	10.559%
54	19.926	2906	2908	2909	rVV2	1456	1041	0.18%	0.019%
55	20.126	2940	2942	2943	rVB2	1572	1107	0.19%	0.020%
56	20.144	2943	2945	2948	rVB3	1438	1642	0.28%	0.029%
57	20.349	2977	2980	2986	rVV5	1561	2274	0.39%	0.041%
58	20.731	3039	3045	3049	rBV3	9132	13706	2.32%	0.245%
59	20.995	3088	3090	3092	rVB	1298	1075	0.18%	0.019%
60	21.031	3092	3096	3097	rBV3	1199	1730	0.29%	0.031%
61	21.342	3145	3149	3158	rBV5	12999	24518	4.15%	0.438%
62	21.501	3173	3176	3178	rBV4	1430	2215	0.38%	0.040%
63	21.595	3190	3192	3195	rBV2	2223	1912	0.32%	0.034%
64	21.677	3204	3206	3207	rBV2	1711	1086	0.18%	0.019%
65	21.724	3207	3214	3225	rVV	257463	418560	70.89%	7.486%
66	22.488	3343	3344	3345	rBV	1587	976	0.17%	0.017%
67	22.964	3423	3425	3428	rBV3	1736	1893	0.32%	0.034%
68	23.122	3448	3452	3453	rBV3	1826	2606	0.44%	0.047%
69	23.152	3453	3457	3458	rVV4	3676	5042	0.85%	0.090%
70	23.205	3461	3466	3470	rVB5	6068	12586	2.13%	0.225%
71	23.845	3573	3575	3580	rVB6	3167	4583	0.78%	0.082%

Data Path : Z:\HPCHEM1\BNA G\DATA\BG122515\
 Data File : BG020523.D
 Acq On : 26 Dec 2015 3:41
 Operator : UM/SJ
 Sample : G4802-02
 Misc :
 ALS Vial : 61 Sample Multiplier: 1

Instrument :
 BNA_G
 ClientSampleId :
 G9C84

Integration Parameters: LSCINT.P

Integrator: RTE
 Smoothing : OFF
 Sampling : 1
 Start Thrs: 0.2
 Stop Thrs : 0

Filtering: 5
 Min Area: 0.1 % of largest Peak
 Max Peaks: 100
 Peak Location: TOP

If leading or trailing edge < 100 prefer < Baseline drop else tangent >
 Peak separation: 5

Method : Z:\HPCHEM1\BNA G\METHODS\SOM02.2-EPA-BG122415.M
 Title : SVOA CALIBRATION

72	24.015	3599	3604	3609	rVB4	5156	9193	1.56%	0.164%
73	24.250	3642	3644	3645	rBV2	1498	1194	0.20%	0.021%
74	24.762	3720	3731	3743	rBV	219438	566775	96.00%	10.136%
75	24.985	3759	3769	3779	rVB	139703	399913	67.73%	7.152%
76	25.238	3810	3812	3814	rVB3	1542	1058	0.18%	0.019%
77	25.567	3866	3868	3872	rBV4	1819	2318	0.39%	0.041%
78	25.719	3892	3894	3895	rBV	1407	1373	0.23%	0.025%
79	25.802	3905	3908	3910	rBV4	1460	1824	0.31%	0.033%
80	25.984	3937	3939	3943	rBV4	1141	995	0.17%	0.018%
81	26.054	3949	3951	3952	rBV2	1394	1233	0.21%	0.022%
82	26.107	3952	3960	3966	rVV7	7790	22628	3.83%	0.405%
83	26.454	4017	4019	4021	rBV3	1578	1498	0.25%	0.027%
84	26.554	4033	4036	4037	rBV3	1429	1263	0.21%	0.023%
85	27.024	4114	4116	4118	rVB3	1690	1032	0.17%	0.018%
86	27.470	4183	4192	4194	rBV6	8288	20389	3.45%	0.365%
87	27.570	4208	4209	4211	rVB2	1702	943	0.16%	0.017%
88	28.299	4331	4333	4335	rBV2	1280	1009	0.17%	0.018%
89	28.992	4449	4451	4454	rBV4	1302	1299	0.22%	0.023%
90	29.115	4465	4472	4483	rVB10	6824	24672	4.18%	0.441%
91	29.762	4580	4582	4584	rBV3	1243	1245	0.21%	0.022%
92	30.032	4626	4628	4630	rBV3	2564	1985	0.34%	0.035%
93	30.138	4645	4646	4648	rVB	1381	964	0.16%	0.017%
94	30.443	4696	4698	4701	rVB2	1489	1558	0.26%	0.028%
95	31.060	4801	4803	4804	rBV2	1712	1244	0.21%	0.022%
96	31.307	4843	4845	4846	rVB2	2075	1186	0.20%	0.021%
97	31.442	4866	4868	4871	rBV4	1464	2024	0.34%	0.036%
98	31.513	4876	4880	4881	rBV3	1668	2042	0.35%	0.037%
99	31.971	4956	4958	4960	rBV2	1506	1024	0.17%	0.018%
100	32.541	5053	5055	5057	rBV2	1375	1145	0.19%	0.020%

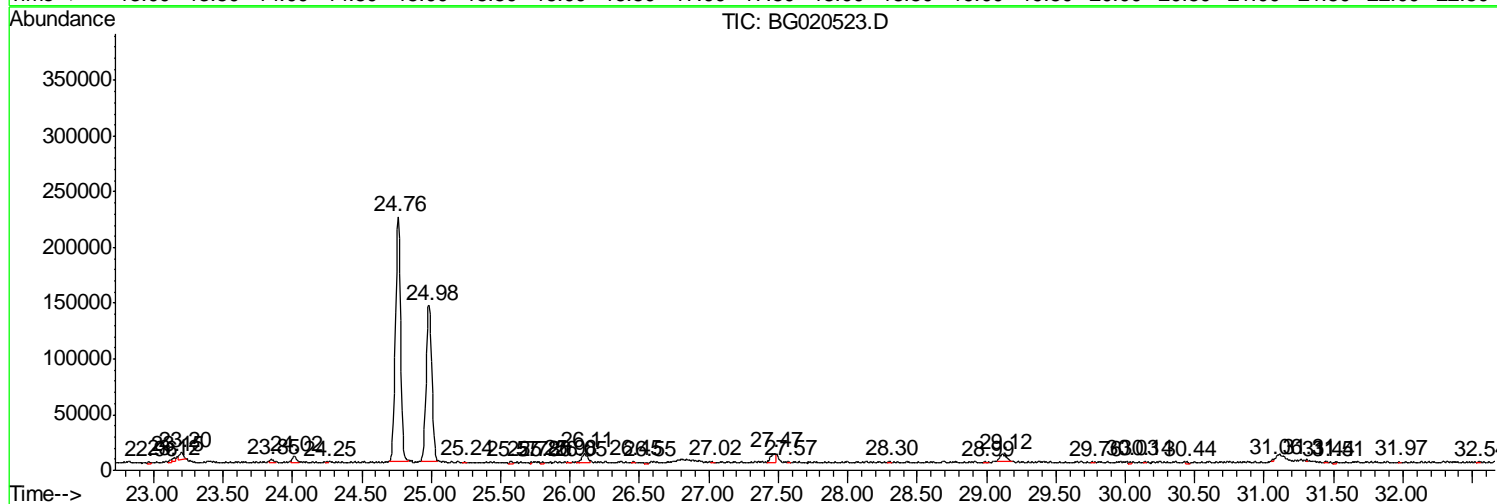
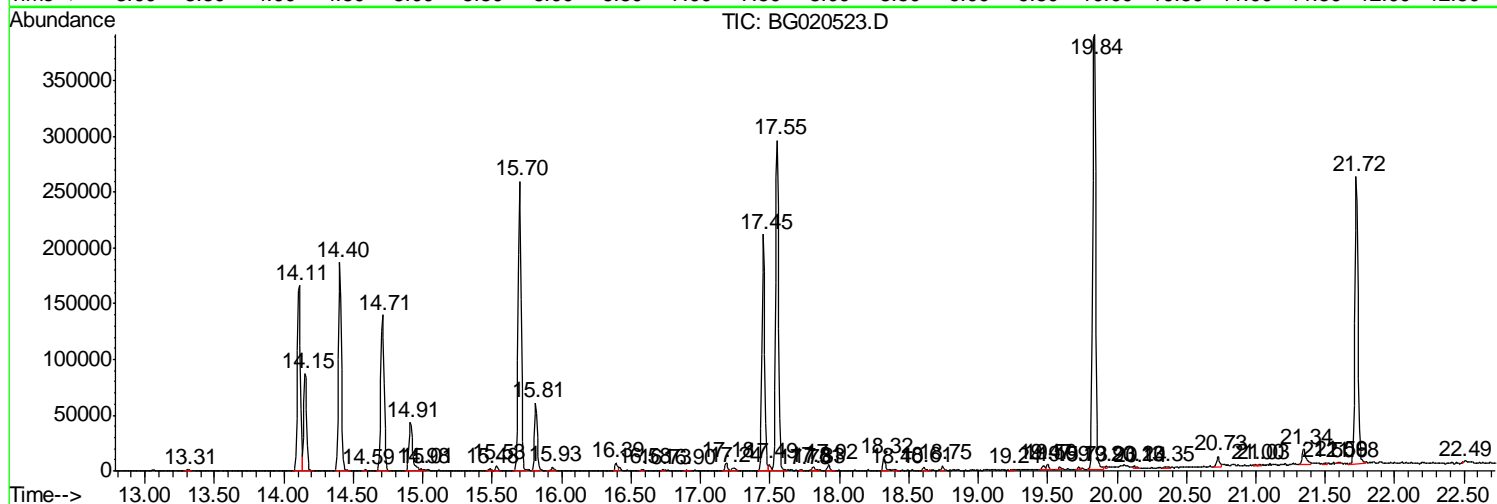
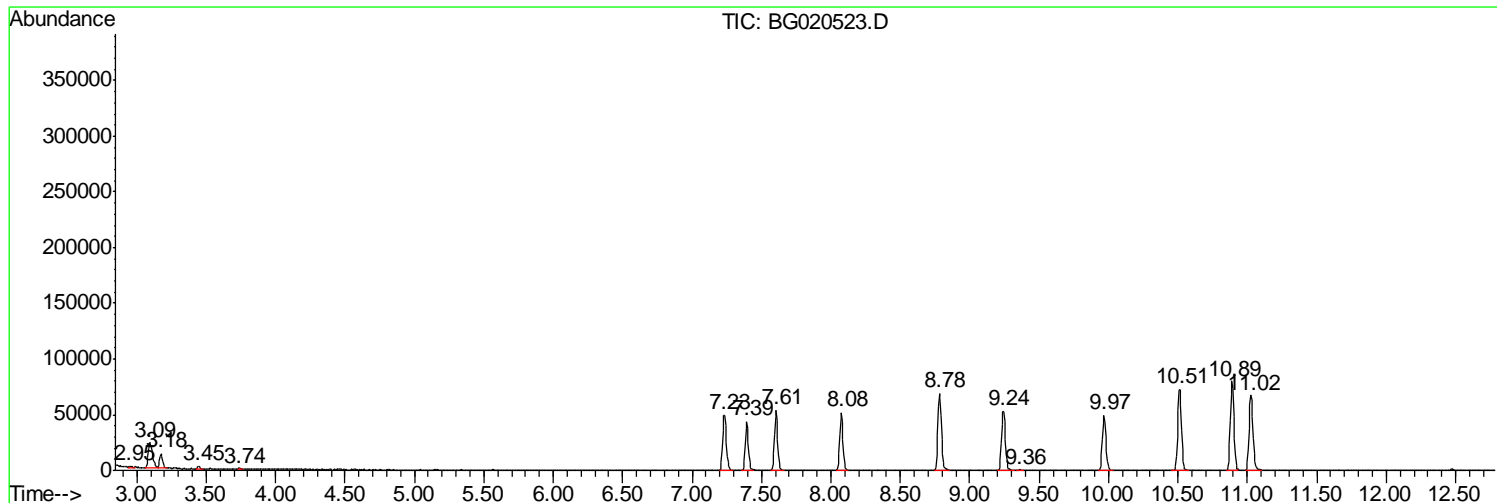
Sum of corrected areas: 5591561

Data Path : Z:\HPCHEM1\BNA G\DATA\BG122515\
 Data File : BG020523.D
 Acq On : 26 Dec 2015 3:41
 Operator : UM/SJ
 Sample : G4802-02
 Misc :
 ALS Vial : 61 Sample Multiplier: 1

Instrument :
 BNA_G
 ClientSampleId :
 G9C84

Quant Method : Z:\HPCHEM1\BNA G\METHODS\SOM02.2-EPA-BG122415.M
 Quant Title : SVOA CALIBRATION

TIC Library : C:\DATABASE\NIST02.L
 TIC Integration Parameters: LSCINT.P



Data Path : Z:\HPCHEM1\BNA G\DATA\BG122515\
 Data File : BG020523.D
 Acq On : 26 Dec 2015 3:41
 Operator : UM/SJ
 Sample : G4802-02
 Misc :
 ALS Vial : 61 Sample Multiplier: 1

Instrument :
 BNA_G
 ClientSampleID :
 G9C84

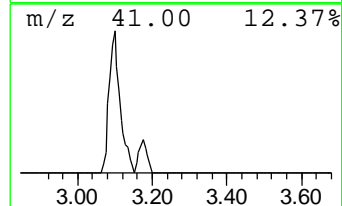
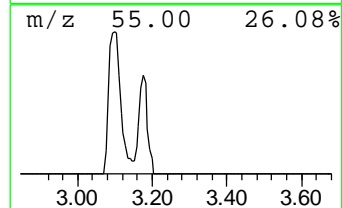
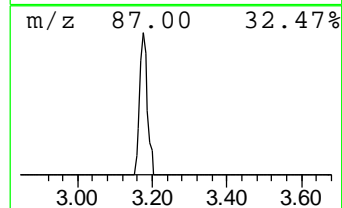
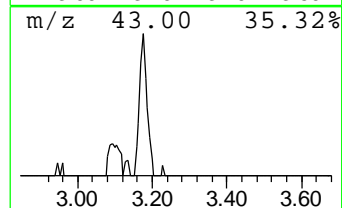
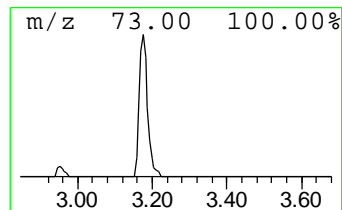
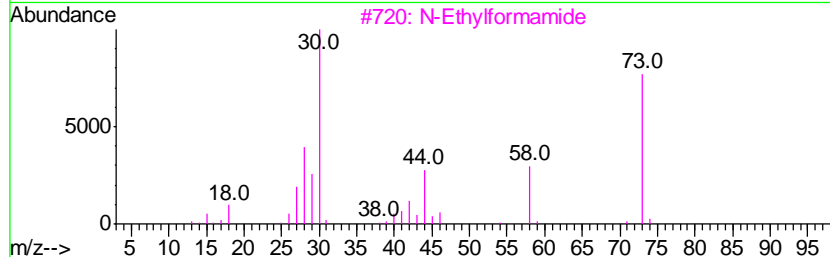
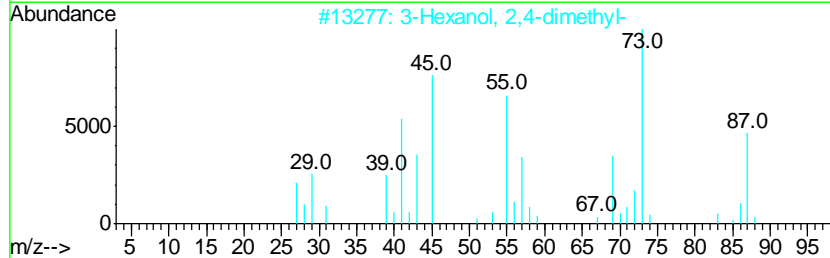
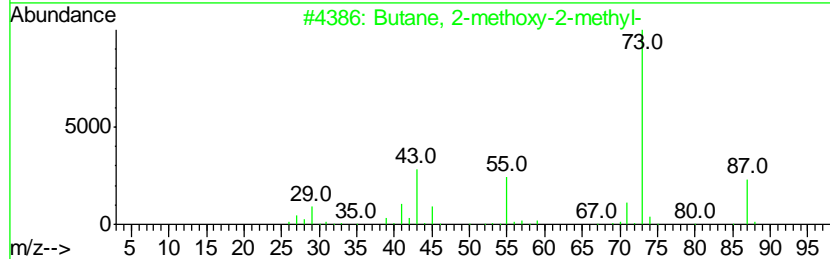
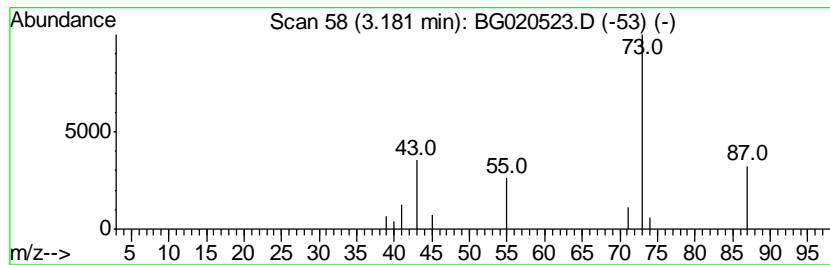
Quant Method : Z:\HPCHEM1\BNA G\METHODS\SOM02.2-EPA-BG122415.M
 Quant Title : SVOA CALIBRATION

TIC Library : C:\DATABASE\NIST02.L
 TIC Integration Parameters: LSCINT.P

 Peak Number 2 Butane, 2-methoxy-2-methyl- Concentration Rank 2

R.T.	EstConc	Area	Relative to ISTD	R.T.
3.18	4.54 ng/ul	19886	1,4-Dichlorobenzene-d4	8.08

Hit#	of	Tentative ID	MW	MolForm	CAS#	Qual
1	5	Butane, 2-methoxy-2-methyl-	102	C6H14O	000994-05-8	83
2		3-Hexanol, 2,4-dimethyl-	130	C8H18O	013432-25-2	9
3		N-Ethylformamide	73	C3H7NO	000627-45-2	5
4		1,4-Butanediamine	88	C4H12N2	000110-60-1	5
5		Isobutylamine	73	C4H11N	000078-81-9	5



Data Path : Z:\HPCHEM1\BNA_G\DATA\BG122515\
Data File : BG020523.D
Acq On : 26 Dec 2015 3:41
Operator : UM/SJ
Sample : G4802-02
Misc :
ALS Vial : 61 Sample Multiplier: 1

Instrument :
BNA_G
ClientSampleId :
G9C84

Quant Method : Z:\HPCHEM1\BNA_G\METHODS\SOM02.2-EPA-BG122415.M
Quant Title : SVOA CALIBRATION

TIC Library : C:\DATABASE\NIST02.L
TIC Integration Parameters: LSCINT.P

TIC Top Hit name	RT	EstConc	Units	Response	--Internal Standard--			
					#	RT	Resp	Conc
Butane, 2-methoxy...	3.18	4.5	ng/ul	19886	1	8.08	87520	20.0