

Data Path : Z:\HPCHEM1\BNA G\DATA\BG122717\
 Data File : BG031815.D
 Acq On : 28 Dec 2017 3:26
 Operator : SJ/JU
 Sample : I7058-14
 Misc :
 ALS Vial : 21 Sample Multiplier: 1

Instrument :
 BNA_G
 ClientSampleId :

Quant Time: Dec 28 07:23:09 2017
 Quant Method : Z:\HPCHEM1\BNA G\METHODS\8270-BG122117.M
 Quant Title : ASP BNA STANDARDS FOR 5 POINT CALIBRATION
 QLast Update : Fri Dec 22 11:08:55 2017
 Response via : Initial Calibration

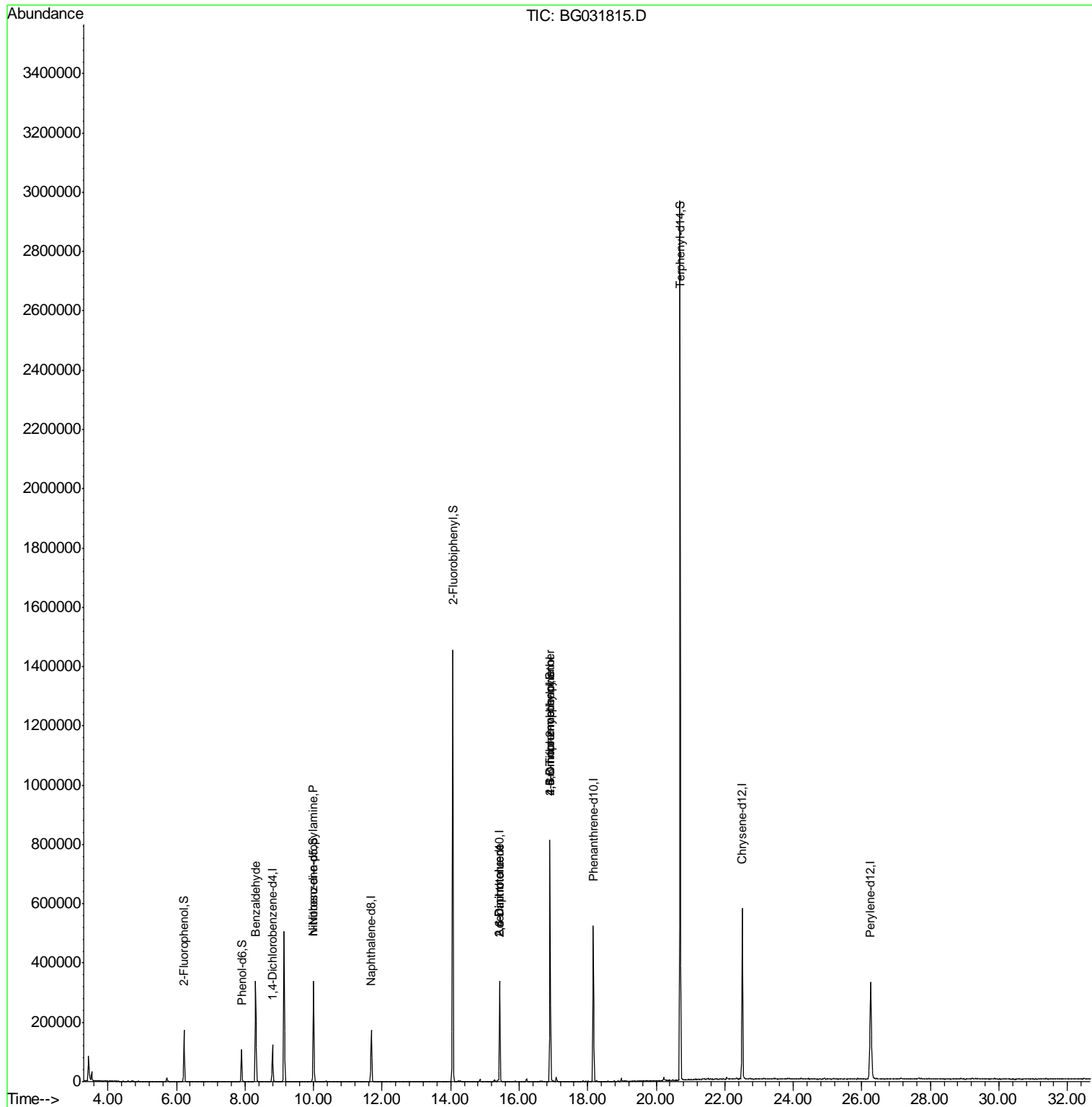
Internal Standards	R.T.	QIon	Response	Conc	Units	Dev(Min)
1) 1,4-Dichlorobenzene-d4	8.80	152	43473	20.00	ng	-0.04
21) Naphthalene-d8	11.69	136	180167	20.00	ng	-0.03
38) Acenaphthene-d10	15.43	164	131259	20.00	ng	-0.03
63) Phenanthrene-d10	18.16	188	356313	20.00	ng	-0.04
75) Chrysene-d12	22.51	240	441444	20.00	ng	-0.06
86) Perylene-d12	26.26	264	462543	20.00	ng	-0.10
System Monitoring Compounds						
5) 2-Fluorophenol	6.22	112	94729	39.69	ng	-0.03
7) Phenol-d6	7.90	99	75789	24.46	ng	-0.03
23) Nitrobenzene-d5	10.00	82	223684	93.75	ng	-0.04
41) 2,4,6-Tribromophenol	16.90	330	200481	100.10	ng	-0.04
44) 2-Fluorobiphenyl	14.06	172	873445	83.52	ng	-0.03
78) Terphenyl-d14	20.70	244	1625318	84.12	ng	-0.04
Target Compounds						
9) Benzaldehyde	8.31	77	4105	2.200	ng	87
19) n-Nitroso-di-n-propylamine	10.00	70	28400	13.419	ng	# 72
50) 2,6-Dinitrotoluene	15.43	165	17106	8.041	ng	# 18
56) 2,4-Dinitrotoluene	15.43	165	17106	6.254	ng	# 16
64) 4,6-Dinitro-2-methylphenol	16.90	198	449	8.520	ng	# 5
66) 4-Bromophenyl-phenylether	16.91	248	16066	3.118	ng	# 1

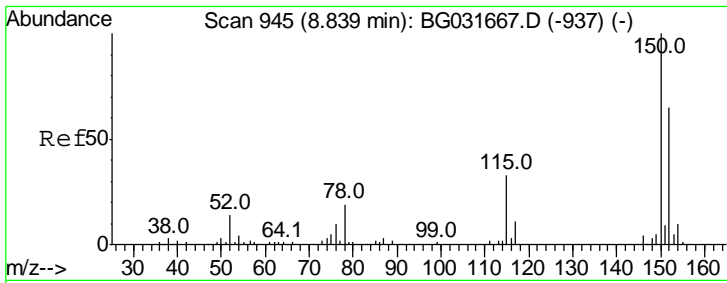
(#) = qualifier out of range (m) = manual integration (+) = signals summed

Data Path : Z:\HPCHEM1\BNA G\DATA\BG122717\
 Data File : BG031815.D
 Acq On : 28 Dec 2017 3:26
 Operator : SJ/JU
 Sample : I7058-14
 Misc :
 ALS Vial : 21 Sample Multiplier: 1

Instrument :
 BNA_G
 ClientSampled :

Quant Time: Dec 28 07:23:09 2017
 Quant Method : Z:\HPCHEM1\BNA G\METHODS\8270-BG122117.M
 Quant Title : ASP BNA STANDARDS FOR 5 POINT CALIBRATION
 QLast Update : Fri Dec 22 11:08:55 2017
 Response via : Initial Calibration

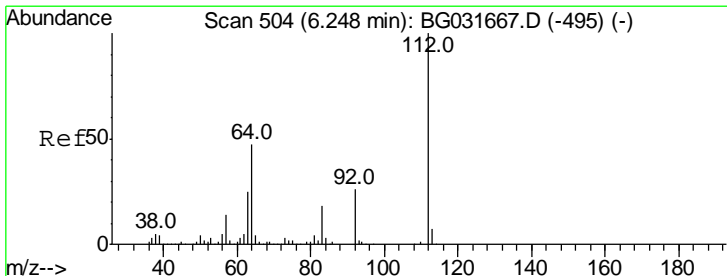
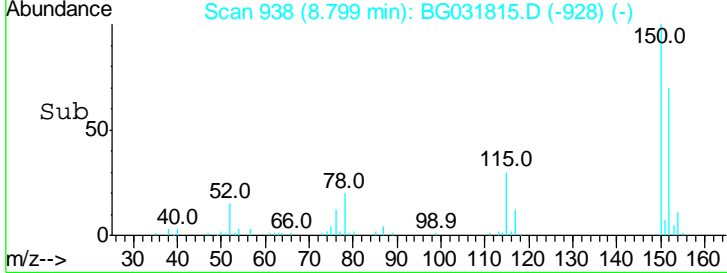
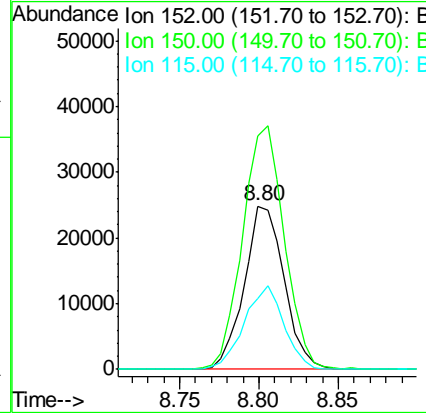
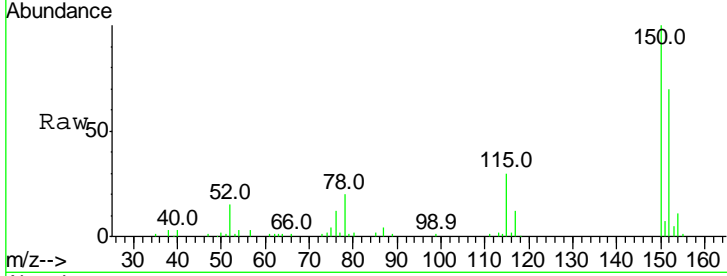




#1
 1,4-Dichlorobenzene-d4
 Concen: 20.000 ng
 RT: 8.80 min Scan# 938
 Delta R.T. -0.04 min
 Lab File: BG031815.D
 Acq: 28 Dec 2017 3:26

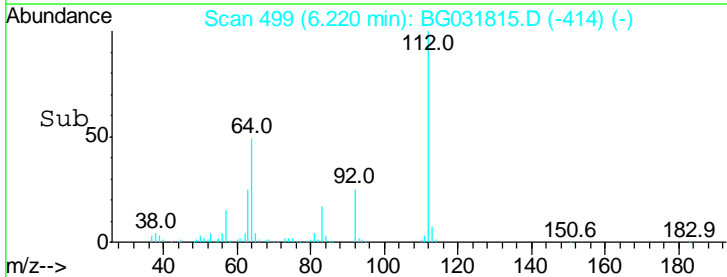
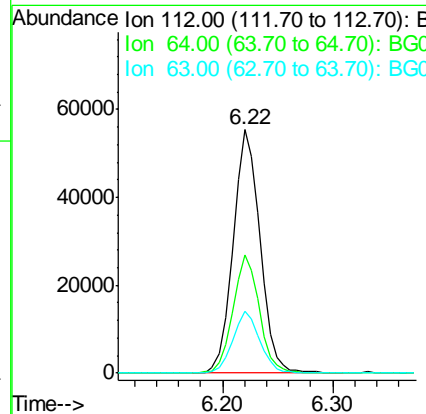
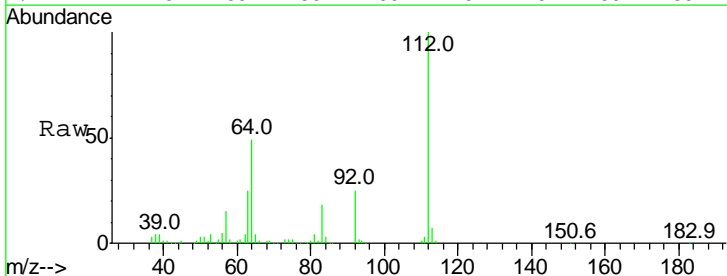
Instrument :
 BNA_G
 ClientSampled :

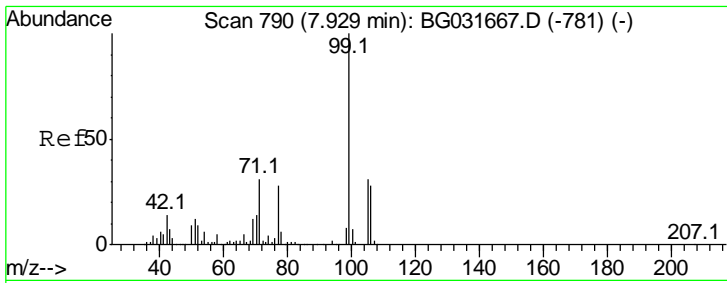
Tgt Ion	Resp	Lower	Upper
152	43473		
150	143.1	126.6	189.8
115	43.1	53.0	79.4#



#5
 2-Fluorophenol
 Concen: 39.689 ng
 RT: 6.22 min Scan# 499
 Delta R.T. -0.03 min
 Lab File: BG031815.D
 Acq: 28 Dec 2017 3:26

Tgt Ion	Resp	Lower	Upper
112	94729		
64	48.6	56.3	84.5#
63	25.2	30.1	45.1#

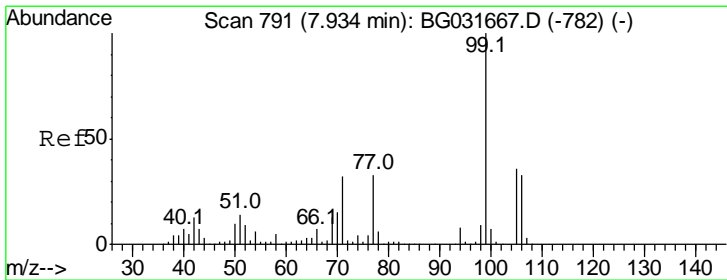
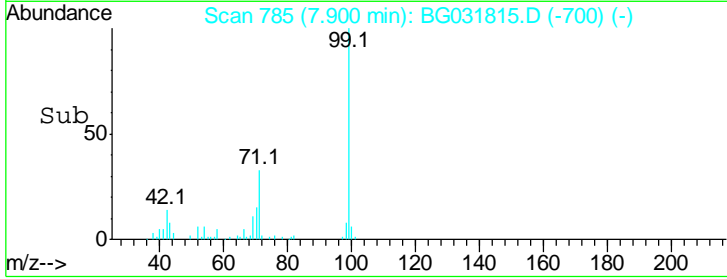
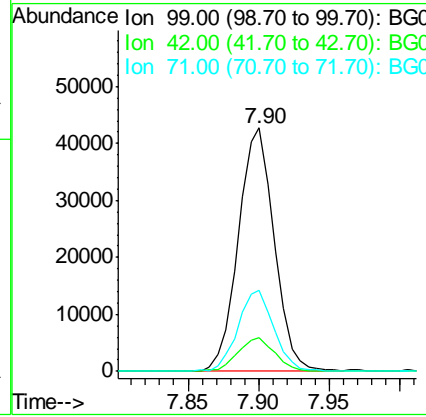
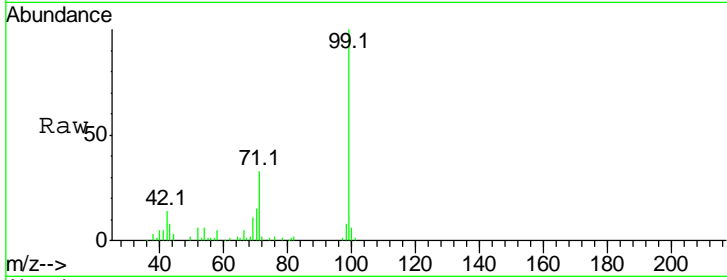




#7
 Phenol-d6
 Concen: 24.457 ng
 RT: 7.90 min Scan# 785
 Delta R.T. -0.03 min
 Lab File: BG031815.D
 Acq: 28 Dec 2017 3:26

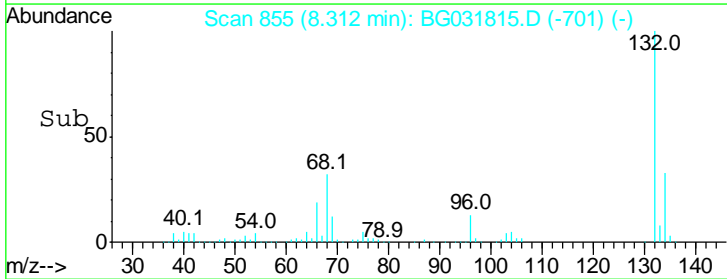
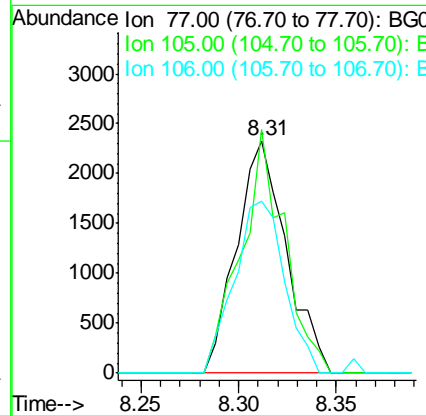
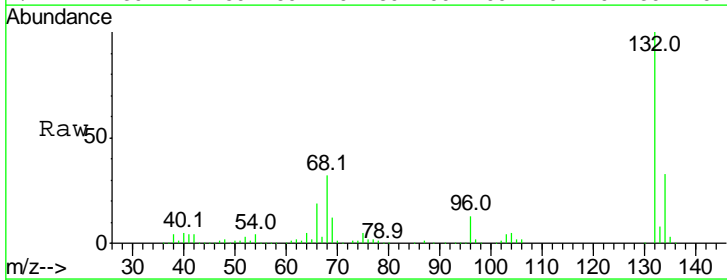
Instrument :
 BNA_G
 ClientSampled :

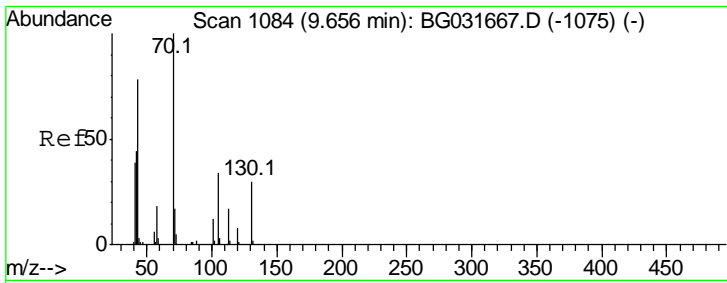
Tgt Ion	Resp	Lower	Upper
99	100		
42	13.8	14.1	21.1#
71	33.0	26.1	39.1



#9
 Benzaldehyde
 Concen: 2.200 ng
 RT: 8.31 min Scan# 855
 Delta R.T. 0.38 min
 Lab File: BG031815.D
 Acq: 28 Dec 2017 3:26

Tgt Ion	Resp	Lower	Upper
77	100		
105	104.6	71.3	111.3
106	73.8	64.2	104.2

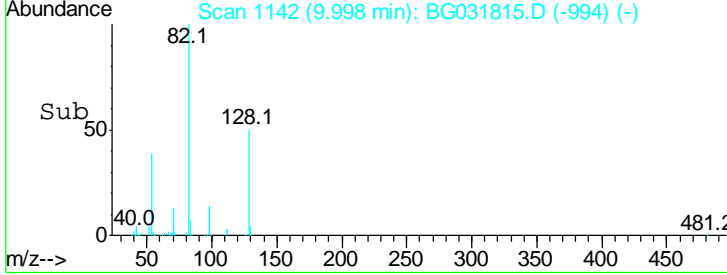
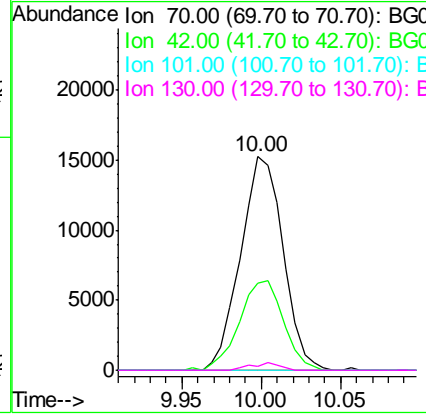
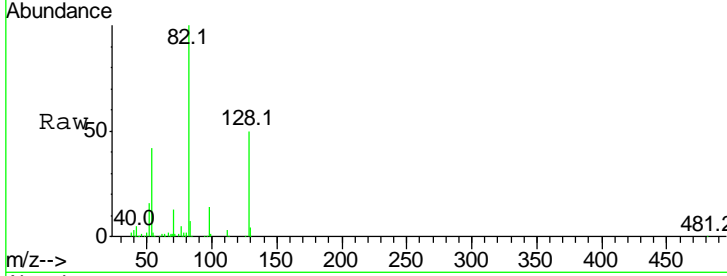




#19
 n-Nitroso-di-n-propylamine
 Concen: 13.419 ng
 RT: 10.00 min Scan# 1142
 Delta R.T. 0.34 min
 Lab File: BG031815.D
 Acq: 28 Dec 2017 3:26

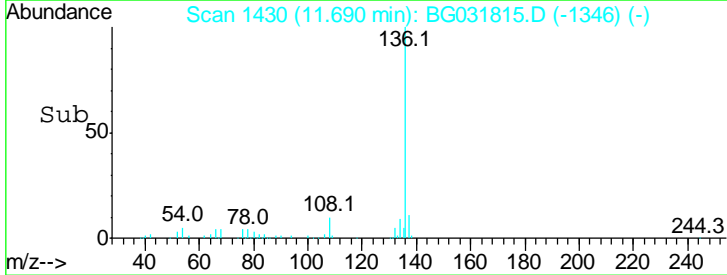
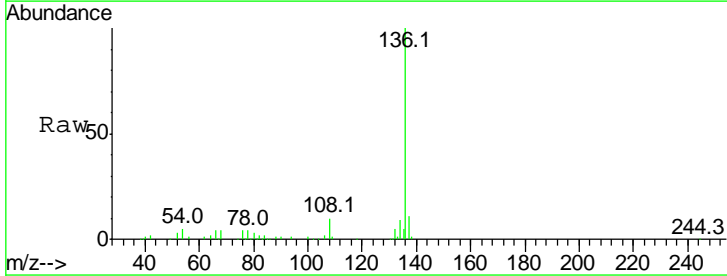
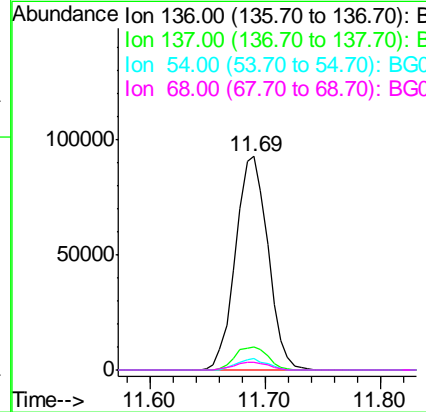
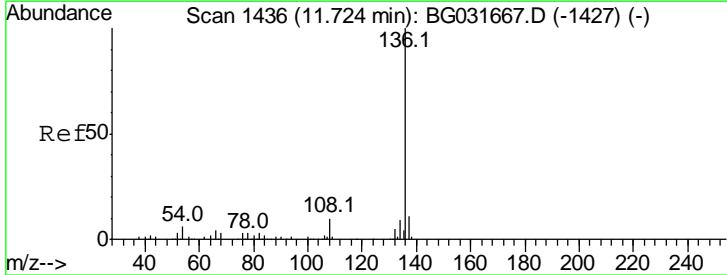
Instrument :
 BNA_G
 ClientSampled :

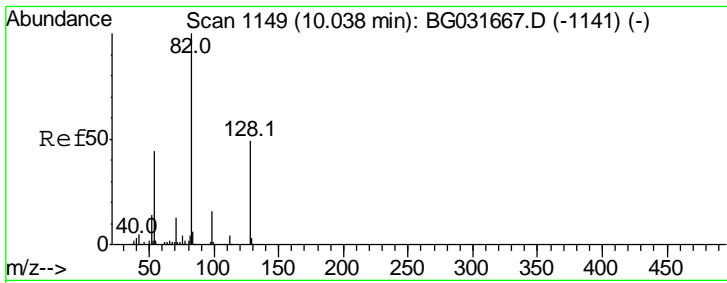
Tgt Ion	Resp	Lower	Upper
70	100		
42	40.8	49.1	73.7#
101	0.0	8.5	12.7#
130	2.0	13.4	20.0#



#21
 Naphthalene-d8
 Concen: 20.000 ng
 RT: 11.69 min Scan# 1430
 Delta R.T. -0.03 min
 Lab File: BG031815.D
 Acq: 28 Dec 2017 3:26

Tgt Ion	Resp	Lower	Upper
136	100		
137	10.9	9.2	13.8
54	5.2	10.3	15.5#
68	3.6	4.5	6.7#

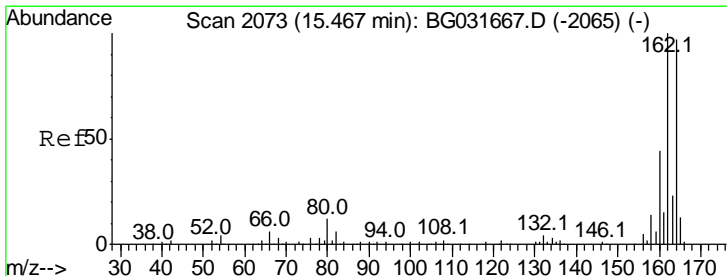
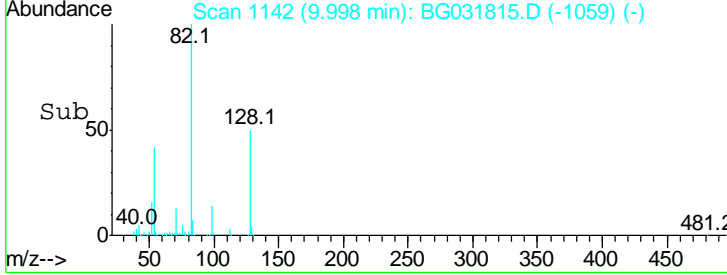
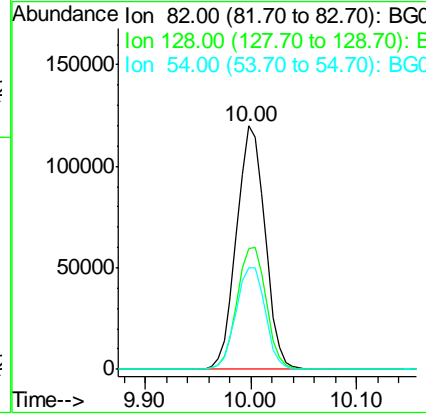
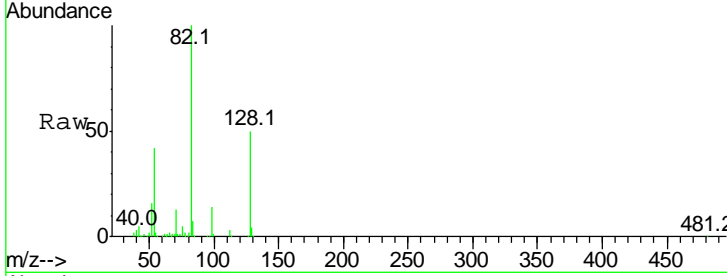




#23
 Nitrobenzene-d5
 Concen: 93.751 ng
 RT: 10.00 min Scan# 1142
 Delta R.T. -0.04 min
 Lab File: BG031815.D
 Acq: 28 Dec 2017 3:26

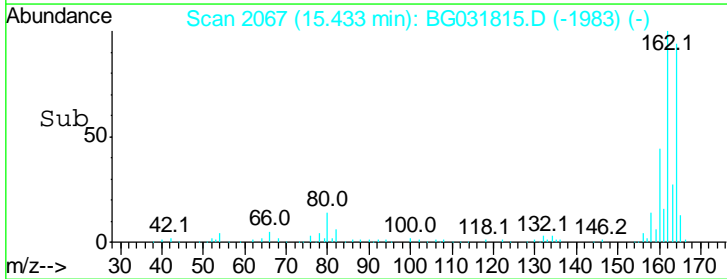
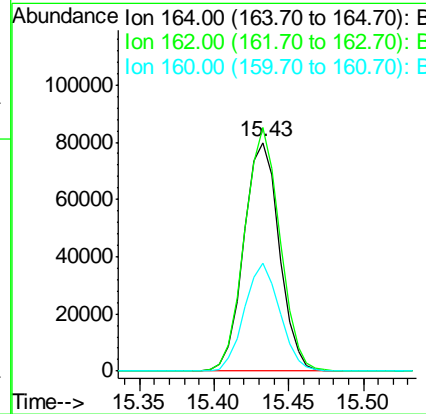
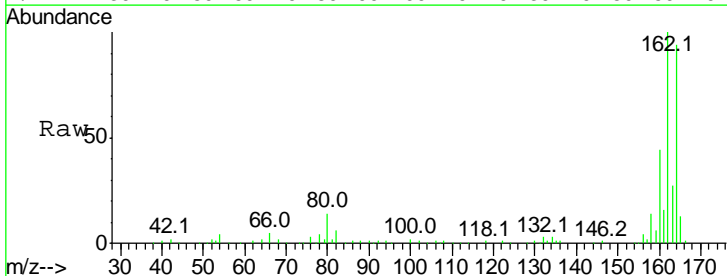
Instrument :
 BNA_G
 ClientSampled :

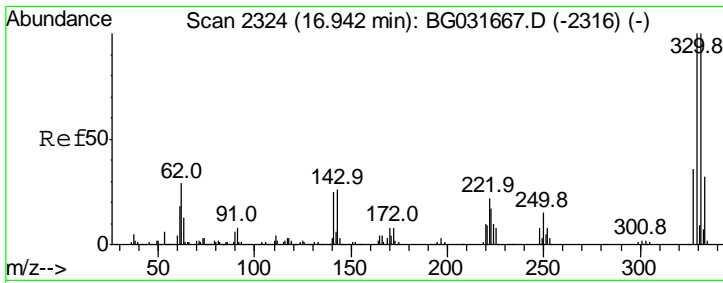
Tgt Ion	Resp	Lower	Upper
82	100		
128	49.8	29.7	44.5#
54	41.8	43.1	64.7#



#38
 Acenaphthene-d10
 Concen: 20.000 ng
 RT: 15.43 min Scan# 2067
 Delta R.T. -0.03 min
 Lab File: BG031815.D
 Acq: 28 Dec 2017 3:26

Tgt Ion	Resp	Lower	Upper
164	100		
162	106.7	78.8	118.2
160	47.3	35.4	53.0

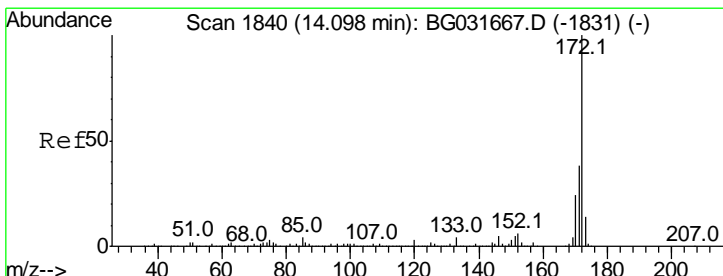
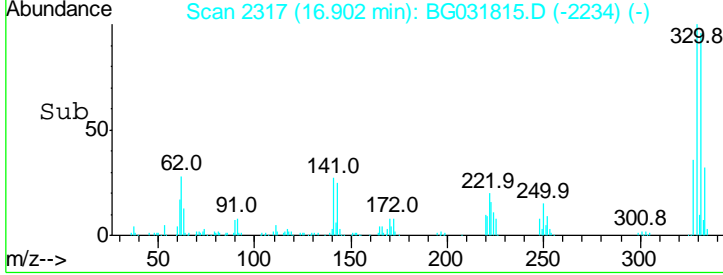
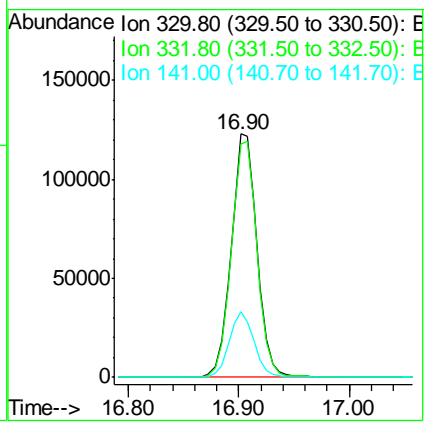
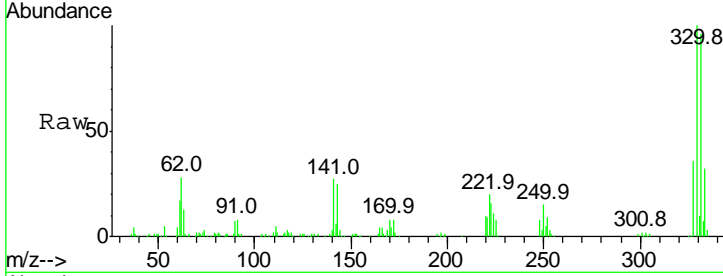




#41
 2,4,6-Tribromophenol
 Concen: 100.099 ng
 RT: 16.90 min Scan# 2317
 Delta R.T. -0.04 min
 Lab File: BG031815.D
 Acq: 28 Dec 2017 3:26

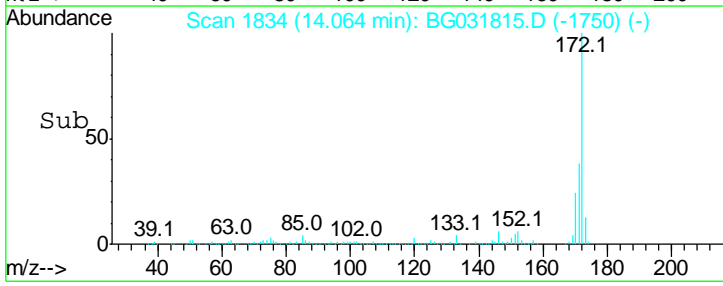
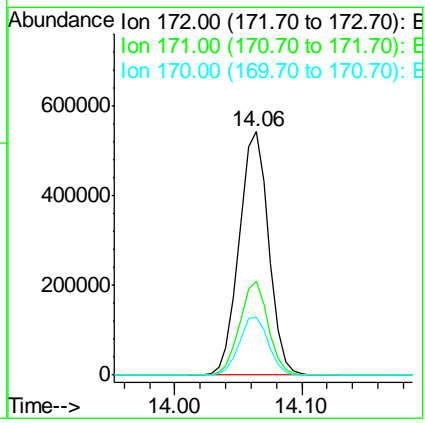
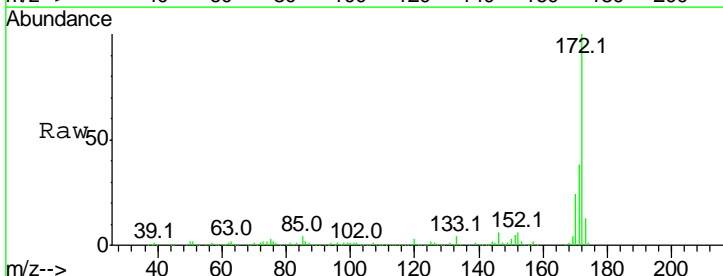
Instrument :
 BNA_G
 ClientSampled :

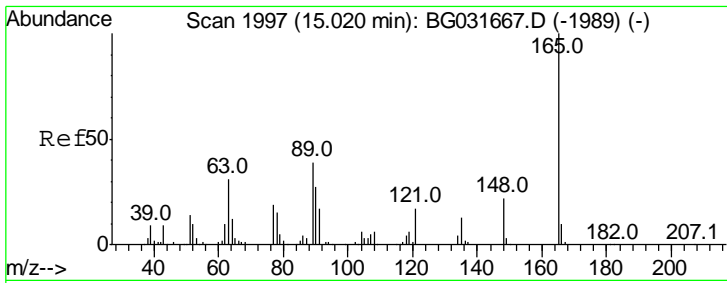
Tgt Ion	Resp	Lower	Upper
330	100		
332	97.1	77.0	115.6
141	25.9	25.2	37.8



#44
 2-Fluorobiphenyl
 Concen: 83.521 ng
 RT: 14.06 min Scan# 1834
 Delta R.T. -0.03 min
 Lab File: BG031815.D
 Acq: 28 Dec 2017 3:26

Tgt Ion	Resp	Lower	Upper
172	100		
171	38.5	30.0	45.0
170	23.7	19.5	29.3

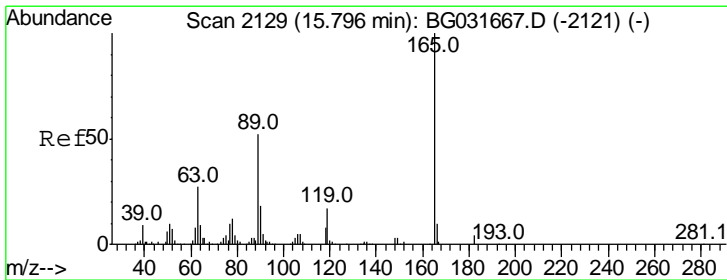
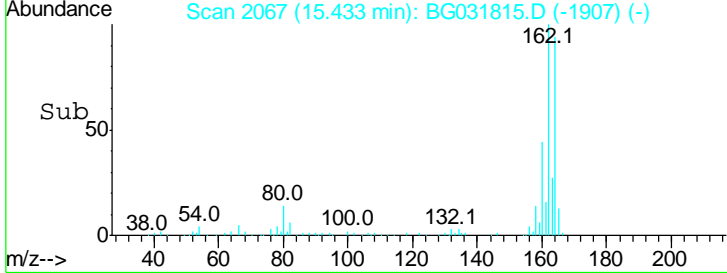
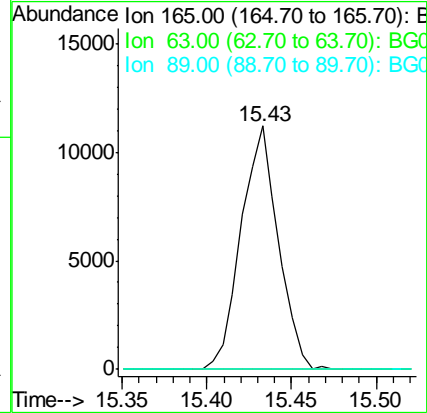
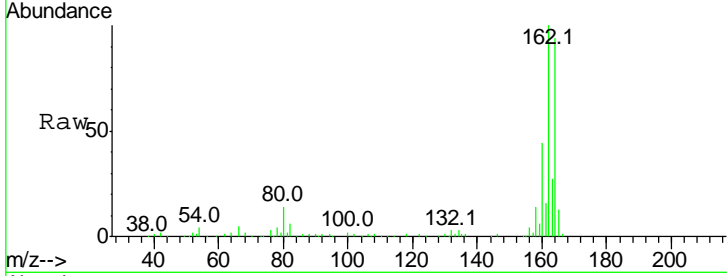




#50
 2,6-Dinitrotoluene
 Concen: 8.041 ng
 RT: 15.43 min Scan# 2067
 Delta R.T. 0.41 min
 Lab File: BG031815.D
 Acq: 28 Dec 2017 3:26

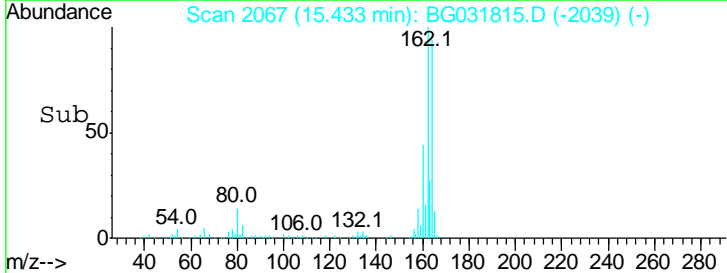
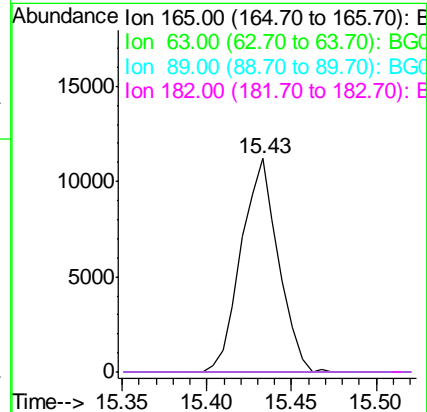
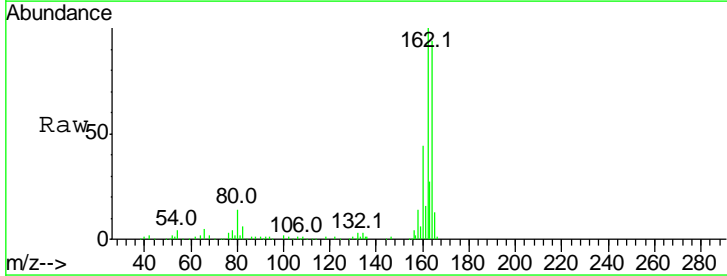
Instrument :
 BNA_G
 ClientSampled :

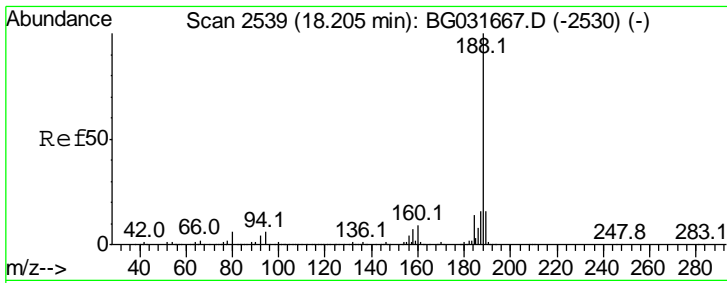
Tgt Ion	Ratio	Lower	Upper
165	100		
63	0.0	52.7	79.1#
89	0.0	49.2	73.8#



#56
 2,4-Dinitrotoluene
 Concen: 6.254 ng
 RT: 15.43 min Scan# 2067
 Delta R.T. -0.36 min
 Lab File: BG031815.D
 Acq: 28 Dec 2017 3:26

Tgt Ion	Ratio	Lower	Upper
165	100		
63	0.0	42.0	63.0#
89	0.0	66.9	100.3#
182	0.0	2.6	3.8#

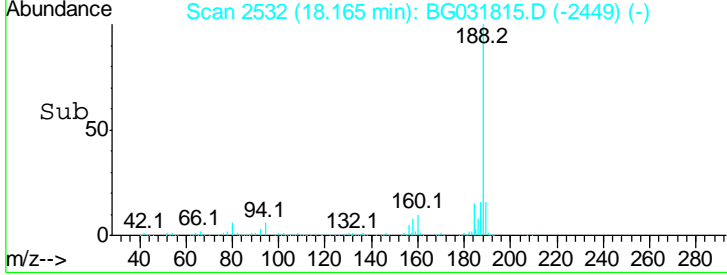
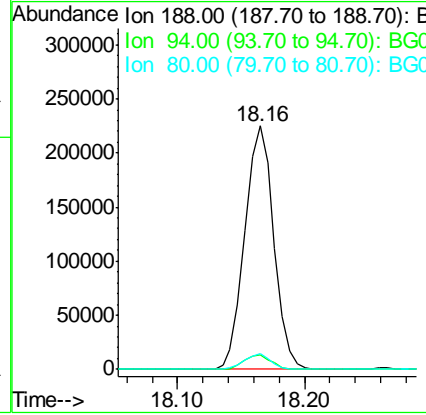
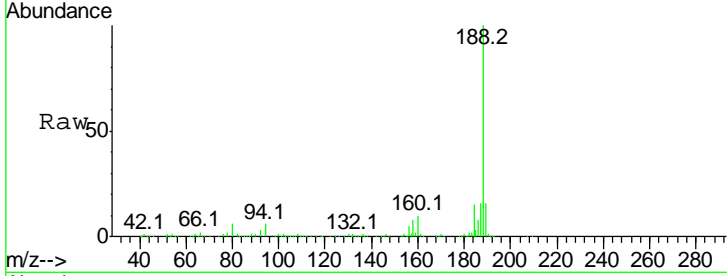




#63
 Phenanthrene-d10
 Concen: 20.000 ng
 RT: 18.16 min Scan# 2532
 Delta R.T. -0.04 min
 Lab File: BG031815.D
 Acq: 28 Dec 2017 3:26

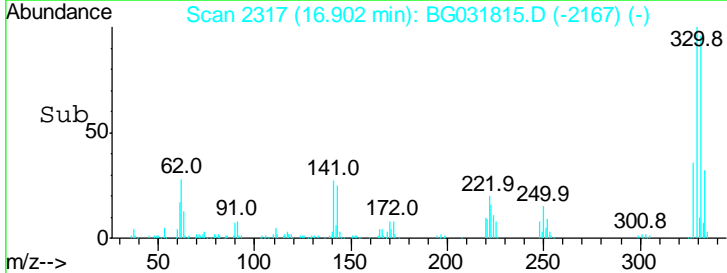
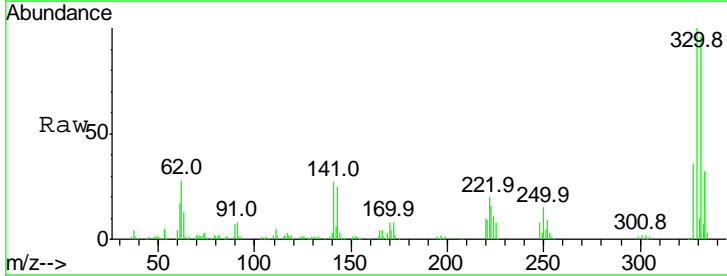
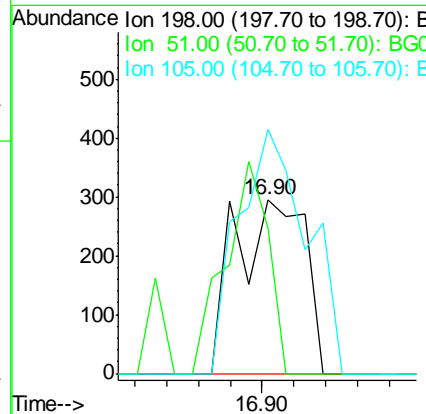
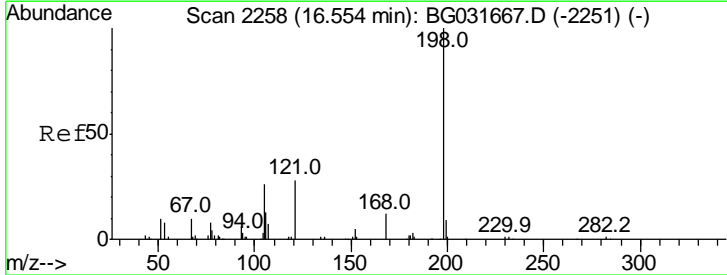
Instrument :
 BNA_G
 ClientSampled :

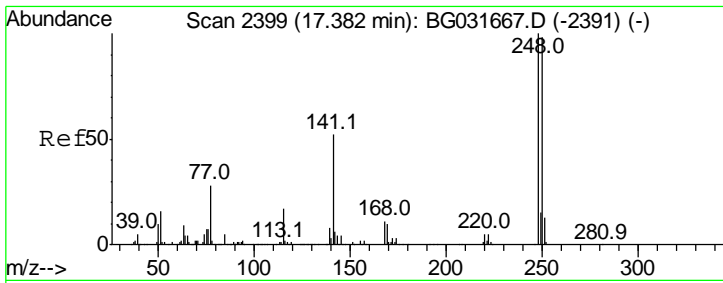
Tgt Ion	Resp	Lower	Upper
188	100		
94	5.8	6.9	10.3#
80	6.3	7.7	11.5#



#64
 4,6-Dinitro-2-methylphenol
 Concen: 8.520 ng
 RT: 16.90 min Scan# 2317
 Delta R.T. 0.35 min
 Lab File: BG031815.D
 Acq: 28 Dec 2017 3:26

Tgt Ion	Resp	Lower	Upper
198	100		
51	83.7	30.6	70.6#
105	140.3	23.8	63.8#

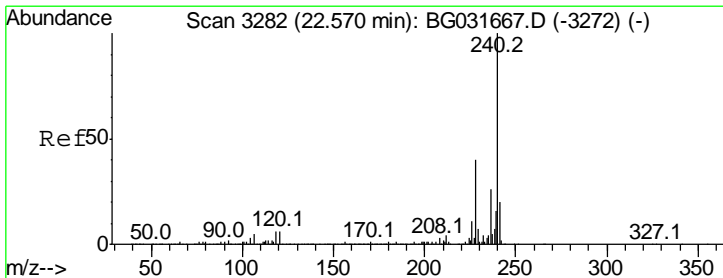
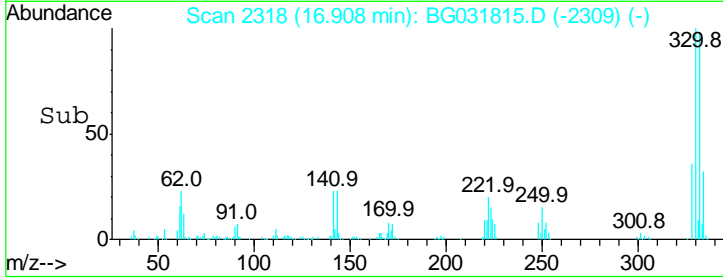
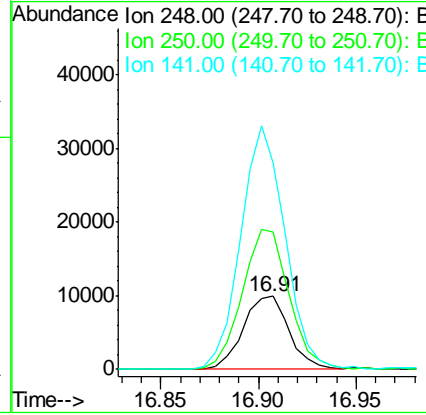
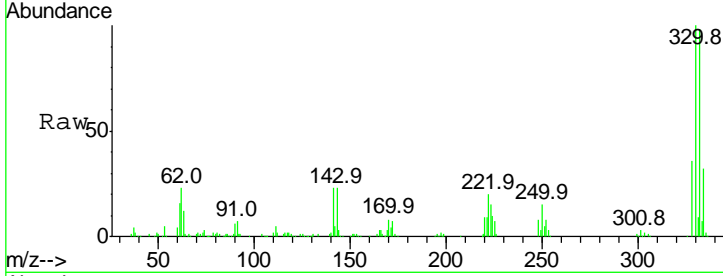




#66
 4-Bromophenyl-phenylether
 Concen: 3.118 ng
 RT: 16.91 min Scan# 2318
 Delta R.T. -0.47 min
 Lab File: BG031815.D
 Acq: 28 Dec 2017 3:26

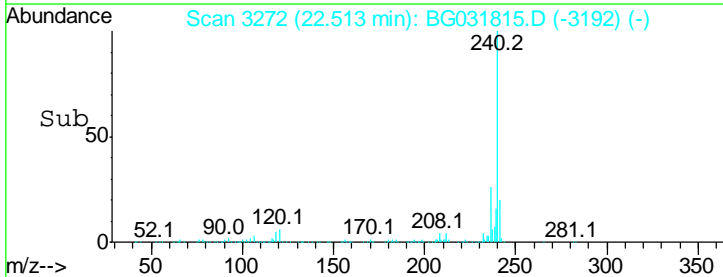
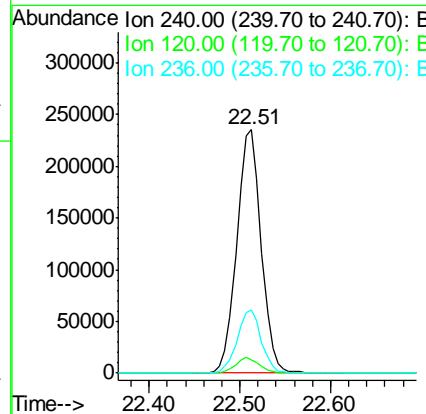
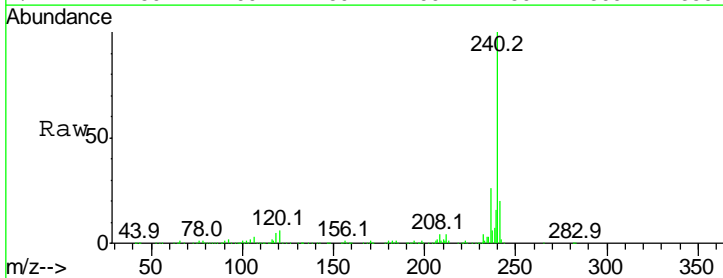
Instrument :
 BNA_G
 ClientSampled :

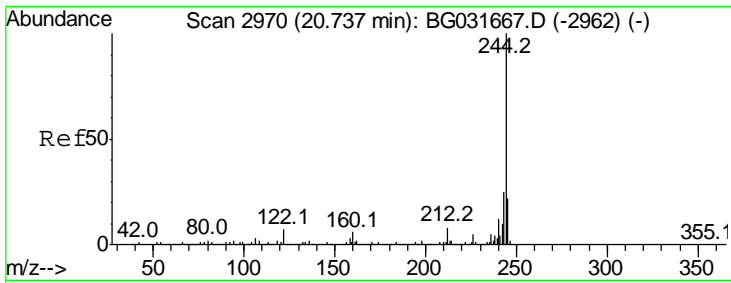
Tgt Ion	Resp	Lower	Upper
248	16066		
250	187.4	77.1	115.7#
141	282.2	50.8	76.2#



#75
 Chrysene-d12
 Concen: 20.000 ng
 RT: 22.51 min Scan# 3272
 Delta R.T. -0.06 min
 Lab File: BG031815.D
 Acq: 28 Dec 2017 3:26

Tgt Ion	Resp	Lower	Upper
240	441444		
120	5.6	6.8	10.2#
236	26.1	20.9	31.3



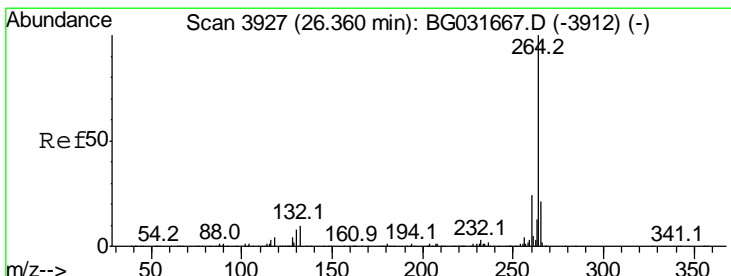
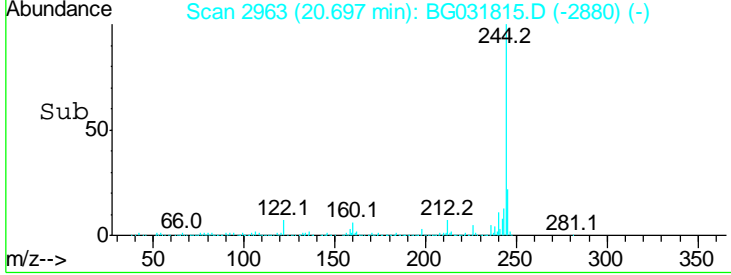
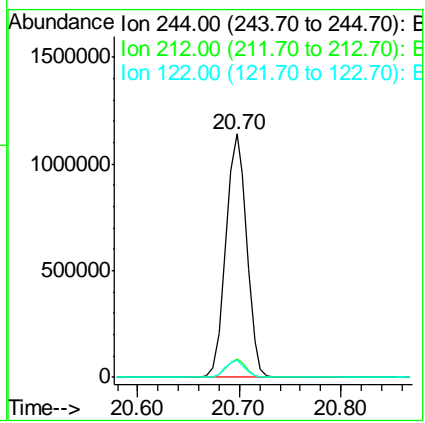
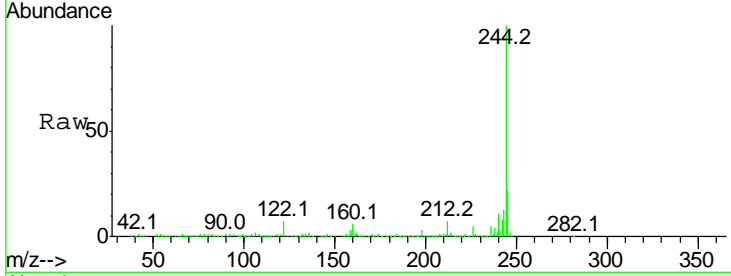


#78
 Terphenyl-d14
 Concen: 84.117 ng
 RT: 20.70 min Scan# 2963
 Delta R.T. -0.04 min
 Lab File: BG031815.D
 Acq: 28 Dec 2017 3:26

Instrument :
 BNA_G
 ClientSampled :

Tgt Ion: 244 Resp: 1625318

Ion	Ratio	Lower	Upper
244	100		
212	7.3	5.8	8.8
122	6.9	7.0	10.4#



#86
 Perylene-d12
 Concen: 20.000 ng
 RT: 26.26 min Scan# 3909
 Delta R.T. -0.10 min
 Lab File: BG031815.D
 Acq: 28 Dec 2017 3:26

Tgt Ion: 264 Resp: 462543

Ion	Ratio	Lower	Upper
264	100		
260	23.5	17.4	26.0
265	20.5	17.7	26.5

