

Data Path : Z:\HPCHEM1\BNA G\DATA\BG123015\
 Data File : BG020636.D
 Acq On : 31 Dec 2015 11:22
 Operator : UM/SJ
 Sample : G4802-16DL 5X
 Misc :
 ALS Vial : 43 Sample Multiplier: 1

Instrument :
 BNA_G
 ClientSampleID :
 G9D91DL

Integration Parameters: LSCINT.P

Integrator: RTE
 Smoothing : OFF Filtering: 5
 Sampling : 1 Min Area: 0.1 % of largest Peak
 Start Thrs: 0.2 Max Peaks: 100
 Stop Thrs : 0 Peak Location: TOP

If leading or trailing edge < 100 prefer < Baseline drop else tangent >
 Peak separation: 5

Method : Z:\HPCHEM1\BNA G\METHODS\SOM02.2-EPA-BG123015.M
 Title : SVOA CALIBRATION

Signal : TIC

peak #	R.T. min	first scan	max scan	last scan	PK TY	peak height	corr. area	corr. % max.	% of total
1	3.074	36	40	44	rBV3	6595	10448	1.30%	0.146%
2	3.109	44	46	50	rVV3	2897	3000	0.37%	0.042%
3	3.150	50	53	57	rVB	2824	3092	0.39%	0.043%
4	3.967	186	192	195	rBV5	1888	2826	0.35%	0.039%
5	4.190	227	230	237	rVB2	2045	3485	0.44%	0.049%
6	7.222	741	746	754	rBB2	5393	8460	1.06%	0.118%
7	7.381	768	773	780	rBB	4455	7498	0.94%	0.105%
8	7.592	804	809	815	rBB	5922	9231	1.15%	0.129%
9	8.062	882	889	897	rBB	59084	100133	12.50%	1.397%
10	8.773	1004	1010	1019	rBB3	6867	10892	1.36%	0.152%
11	9.231	1083	1088	1096	rBV2	5647	11045	1.38%	0.154%
12	9.954	1207	1211	1216	rBV2	4675	7093	0.89%	0.099%
13	10.506	1299	1305	1315	rVB3	5967	11909	1.49%	0.166%
14	10.877	1361	1368	1375	rBV	92878	165601	20.67%	2.310%
15	10.929	1375	1377	1381	rVB	1758	1663	0.21%	0.023%
16	11.012	1384	1391	1393	rBV2	2148	2808	0.35%	0.039%
17	11.875	1535	1538	1541	rBB2	1094	1093	0.14%	0.015%
18	12.739	1681	1685	1692	rBB	7221	11935	1.49%	0.166%
19	12.904	1710	1713	1714	rBV	1013	1028	0.13%	0.014%
20	12.962	1721	1723	1726	rVB	935	979	0.12%	0.014%
21	13.074	1738	1742	1745	rBB2	1551	1971	0.25%	0.027%
22	13.162	1753	1757	1760	rVB2	1350	1794	0.22%	0.025%
23	13.209	1761	1765	1771	rBB	4086	5645	0.70%	0.079%
24	13.497	1808	1814	1817	rBV5	2241	4472	0.56%	0.062%
25	13.532	1817	1820	1824	rVV3	2189	3207	0.40%	0.045%
26	13.585	1827	1829	1833	rVV	1474	1932	0.24%	0.027%
27	13.638	1835	1838	1841	rVB	1204	1305	0.16%	0.018%
28	13.714	1849	1851	1852	rBV	1345	1299	0.16%	0.018%
29	13.738	1854	1855	1862	rVB3	2584	3016	0.38%	0.042%
30	13.855	1870	1875	1876	rBV3	4664	6110	0.76%	0.085%
31	13.973	1892	1895	1896	rBV2	1105	1105	0.14%	0.015%
32	14.014	1896	1902	1907	rBV2	18295	31913	3.98%	0.445%
33	14.090	1907	1915	1920	rBV2	23672	47036	5.87%	0.656%
34	14.155	1920	1926	1930	rVB4	16375	32341	4.04%	0.451%

Data Path : Z:\HPCHEM1\BNA G\DATA\BG123015\
 Data File : BG020636.D
 Acq On : 31 Dec 2015 11:22
 Operator : UM/SJ
 Sample : G4802-16DL 5X
 Misc :
 ALS Vial : 43 Sample Multiplier: 1

Instrument :
 BNA_G
 ClientSampleId :
 G9D91DL

Integration Parameters: LSCINT.P

Integrator: RTE
 Smoothing : OFF
 Sampling : 1
 Start Thrs: 0.2
 Stop Thrs : 0

Filtering: 5
 Min Area: 0.1 % of largest Peak
 Max Peaks: 100
 Peak Location: TOP

If leading or trailing edge < 100 prefer < Baseline drop else tangent >
 Peak separation: 5

Method : Z:\HPCHEM1\BNA G\METHODS\SOM02.2-EPA-BG123015.M
 Title : SVOA CALIBRATION

35	14.196	1930	1933	1938	rVB4	2543	4026	0.50%	0.056%
36	14.249	1938	1942	1952	rBV6	9240	19269	2.41%	0.269%
37	14.331	1952	1956	1958	rVB2	1647	1654	0.21%	0.023%
38	14.390	1961	1966	1969	rBV	27376	45546	5.69%	0.635%
39	14.514	1983	1987	1992	rVB4	3486	5528	0.69%	0.077%
40	14.572	1993	1997	1999	rBV3	3041	4674	0.58%	0.065%
41	14.655	2006	2011	2012	rBV4	2988	4900	0.61%	0.068%
42	14.696	2012	2018	2024	rVV2	185939	293460	36.64%	4.094%
43	14.760	2024	2029	2035	rVB2	15460	25122	3.14%	0.350%
44	14.819	2035	2039	2041	rBV3	2551	3110	0.39%	0.043%
45	14.913	2047	2055	2062	rBV4	6621	16634	2.08%	0.232%
46	14.984	2064	2067	2068	rBV2	2794	2905	0.36%	0.041%
47	15.083	2078	2084	2088	rBV5	13790	27368	3.42%	0.382%
48	15.160	2094	2097	2102	rBV3	12294	19863	2.48%	0.277%
49	15.307	2116	2122	2127	rBV4	13588	24035	3.00%	0.335%
50	15.360	2128	2131	2135	rVV3	7460	9670	1.21%	0.135%
51	15.477	2144	2151	2154	rBV5	12836	27233	3.40%	0.380%
52	15.565	2162	2166	2171	rVB3	10040	15970	1.99%	0.223%
53	15.630	2171	2177	2178	rBV5	9008	15541	1.94%	0.217%
54	15.689	2182	2187	2191	rVV2	44155	70092	8.75%	0.978%
55	15.741	2191	2196	2205	rVB2	58134	101186	12.63%	1.412%
56	15.924	2220	2227	2230	rBV3	16291	34568	4.32%	0.482%
57	16.147	2260	2265	2269	rBV4	16330	30653	3.83%	0.428%
58	16.405	2301	2309	2314	rBV5	43311	85125	10.63%	1.188%
59	16.734	2358	2365	2370	rBV5	26798	69314	8.65%	0.967%
60	16.787	2371	2374	2379	rVV	21285	33488	4.18%	0.467%
61	16.834	2380	2382	2386	rVB5	9558	10727	1.34%	0.150%
62	16.893	2388	2392	2397	rVB	22832	33587	4.19%	0.469%
63	16.952	2397	2402	2405	rBV6	9226	16487	2.06%	0.230%
64	17.222	2444	2448	2451	rBV	26502	37871	4.73%	0.528%
65	17.445	2479	2486	2489	rBV	244360	399982	49.93%	5.580%
66	17.486	2489	2493	2498	rVV	300610	450017	56.18%	6.278%
67	17.539	2498	2502	2505	rVV2	47235	70785	8.84%	0.987%
68	17.575	2505	2508	2513	rVB	49407	67746	8.46%	0.945%
69	17.957	2570	2573	2576	rVB2	14937	17352	2.17%	0.242%
70	18.315	2629	2634	2638	rBV	73131	108859	13.59%	1.519%
71	18.362	2638	2642	2647	rVB	79690	121954	15.22%	1.701%

Data Path : Z:\HPCHEM1\BNA G\DATA\BG123015\
 Data File : BG020636.D
 Acq On : 31 Dec 2015 11:22
 Operator : UM/SJ
 Sample : G4802-16DL 5X
 Misc :
 ALS Vial : 43 Sample Multiplier: 1

Instrument :
 BNA_G
 ClientSampleId :
 G9D91DL

Integration Parameters: LSCINT.P

Integrator: RTE
 Smoothing : OFF Filtering: 5
 Sampling : 1 Min Area: 0.1 % of largest Peak
 Start Thrs: 0.2 Max Peaks: 100
 Stop Thrs : 0 Peak Location: TOP

If leading or trailing edge < 100 prefer < Baseline drop else tangent >
 Peak separation: 5

Method : Z:\HPCHEM1\BNA G\METHODS\SOM02.2-EPA-BG123015.M
 Title : SVOA CALIBRATION

72	18.450	2653	2657	2661	rBV3	23455	35210	4.40%	0.491%
73	18.515	2661	2668	2672	rBV2	169121	334730	41.79%	4.670%
74	18.808	2714	2718	2722	rVB	41801	59090	7.38%	0.824%
75	19.226	2785	2789	2794	rBV	69441	103606	12.93%	1.445%
76	19.367	2809	2813	2814	rBV3	23839	34046	4.25%	0.475%
77	19.490	2829	2834	2839	rBV	287347	402881	50.30%	5.620%
78	19.643	2856	2860	2864	rBV	45303	62193	7.76%	0.868%
79	19.854	2887	2896	2904	rVB	416611	694562	86.71%	9.690%
80	20.172	2947	2950	2959	rVB2	39707	86132	10.75%	1.202%
81	20.442	2993	2996	3001	rVB	67317	87500	10.92%	1.221%
82	20.501	3003	3006	3016	rVB	62184	98933	12.35%	1.380%
83	20.642	3026	3030	3034	rBV	59865	85973	10.73%	1.199%
84	20.689	3034	3038	3046	rVB	65546	115408	14.41%	1.610%
85	21.335	3145	3148	3152	rVB2	38492	48882	6.10%	0.682%
86	21.717	3204	3213	3218	rBV2	348613	801030	100.00%	11.175%
87	21.764	3218	3221	3227	rVB	130239	197734	24.68%	2.758%
88	23.938	3584	3591	3598	rBV2	68973	238221	29.74%	3.323%
89	24.666	3709	3715	3722	rBV	55530	127089	15.87%	1.773%
90	24.813	3735	3740	3751	rVB2	81642	229276	28.62%	3.199%
91	24.972	3757	3767	3776	rBV2	159592	468771	58.52%	6.540%
92	29.725	4574	4576	4577	rBV2	2129	1717	0.21%	0.024%
93	30.177	4651	4653	4654	rBV2	1935	1570	0.20%	0.022%
94	31.270	4837	4839	4843	rBV4	2559	3361	0.42%	0.047%
95	31.452	4868	4870	4872	rBV3	2258	1120	0.14%	0.016%
96	31.523	4880	4882	4883	rBV2	1601	989	0.12%	0.014%
97	31.658	4903	4905	4908	rBV5	2222	1780	0.22%	0.025%
98	31.799	4927	4929	4930	rBV2	2006	1488	0.19%	0.021%
99	31.999	4961	4963	4964	rBV2	2403	1220	0.15%	0.017%

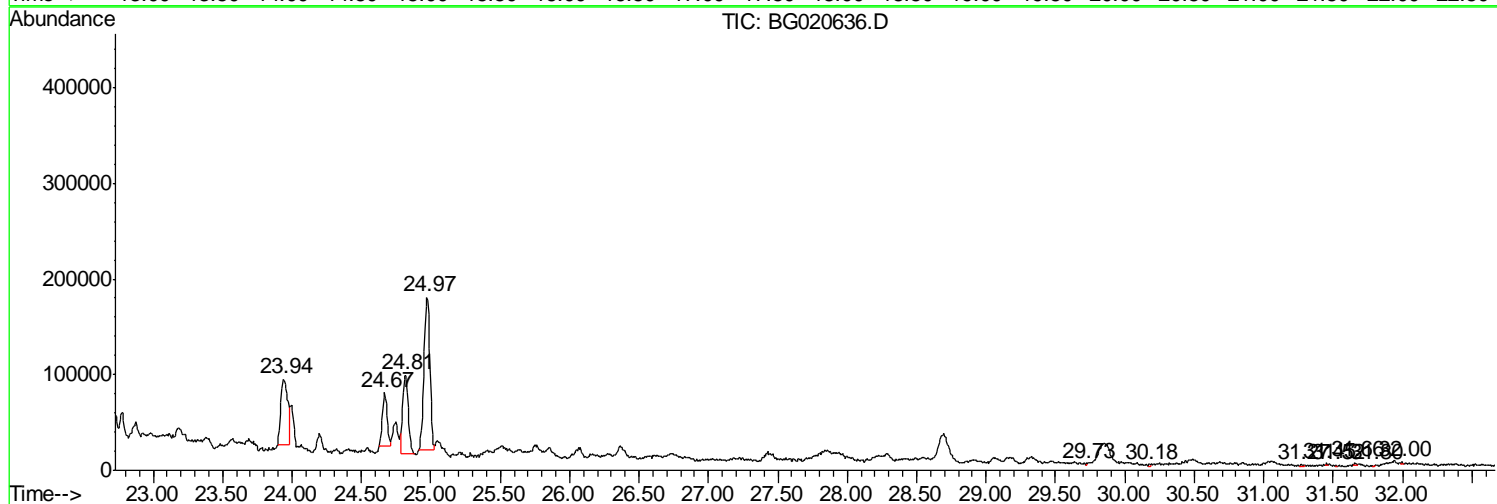
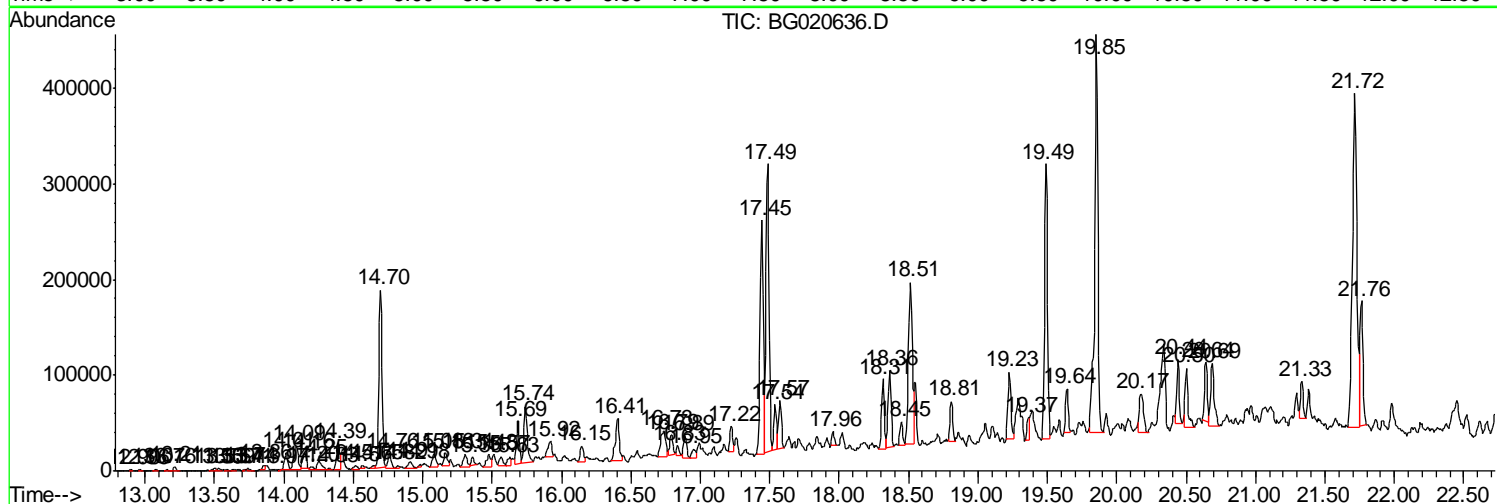
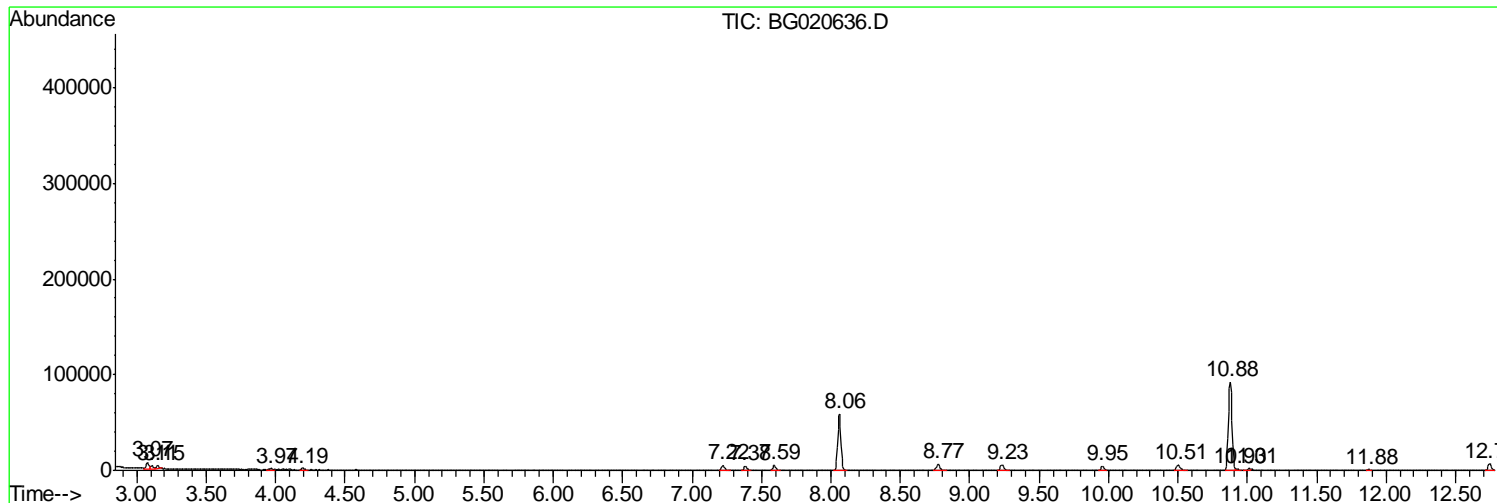
Sum of corrected areas: 7168178

Data Path : Z:\HPCHEM1\BNA G\DATA\BG123015\
 Data File : BG020636.D
 Acq On : 31 Dec 2015 11:22
 Operator : UM/SJ
 Sample : G4802-16DL 5X
 Misc :
 ALS Vial : 43 Sample Multiplier: 1

Instrument :
 BNA_G
 ClientSampleId :
 G9D91DL

Quant Method : Z:\HPCHEM1\BNA G\METHODS\SOM02.2-EPA-BG123015.M
 Quant Title : SVOA CALIBRATION

TIC Library : C:\DATABASE\NIST02.L
 TIC Integration Parameters: LSCINT.P



Data Path : Z:\HPCHEM1\BNA G\DATA\BG123015\
 Data File : BG020636.D
 Acq On : 31 Dec 2015 11:22
 Operator : UM/SJ
 Sample : G4802-16DL 5X
 Misc :
 ALS Vial : 43 Sample Multiplier: 1

Instrument :
 BNA_G
 ClientSampleID :
 G9D91DL

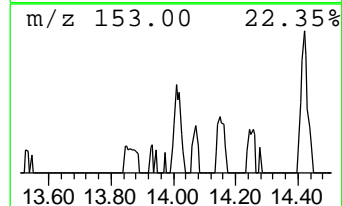
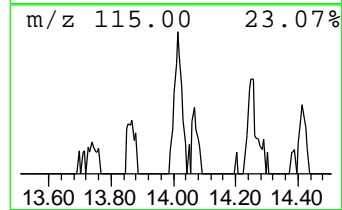
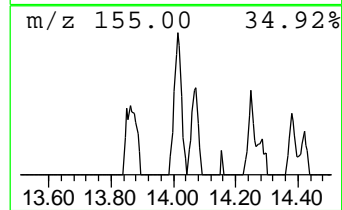
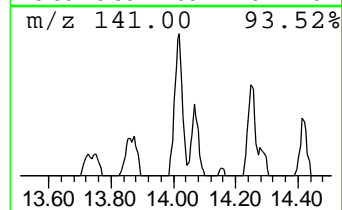
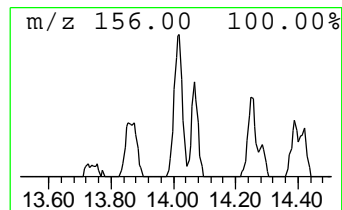
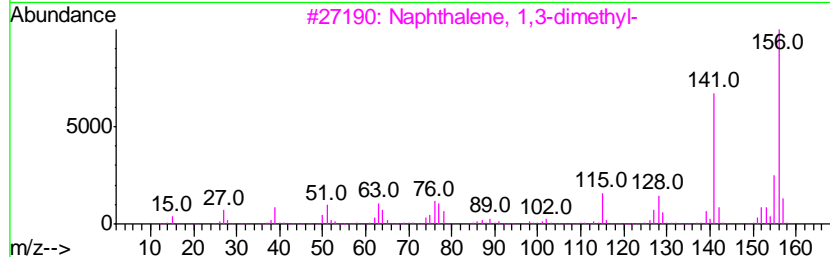
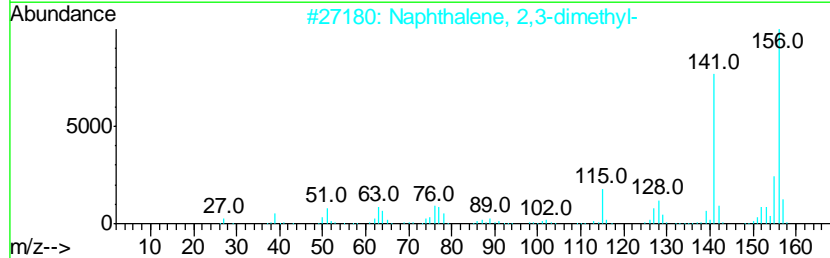
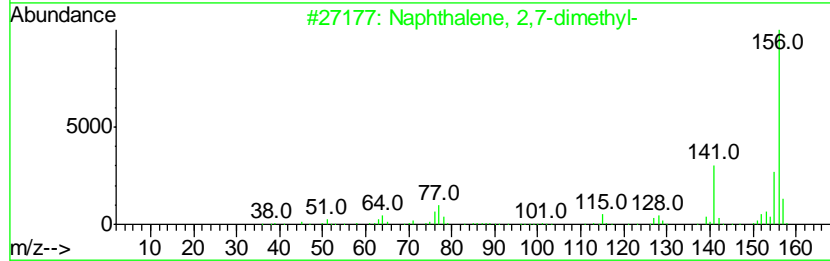
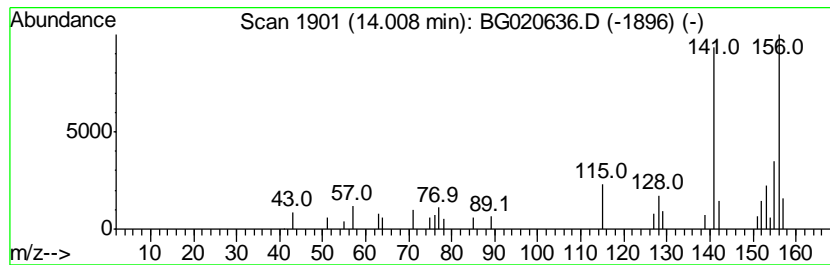
Quant Method : Z:\HPCHEM1\BNA G\METHODS\SOM02.2-EPA-BG123015.M
 Quant Title : SVOA CALIBRATION

TIC Library : C:\DATABASE\NIST02.L
 TIC Integration Parameters: LSCINT.P

 Peak Number 2 Naphthalene, 2,7-dimethyl- Concentration Rank 13

R.T.	EstConc	Area	Relative to ISTD	R.T.
14.01	2.17 ng/ul	31913	Acenaphthene-d10	14.70

Hit#	of	Tentative ID	MW	MolForm	CAS#	Qual
1	5	Naphthalene, 2,7-dimethyl-	156	C12H12	000582-16-1	95
2		Naphthalene, 2,3-dimethyl-	156	C12H12	000581-40-8	95
3		Naphthalene, 1,3-dimethyl-	156	C12H12	000575-41-7	94
4		Naphthalene, 1,7-dimethyl-	156	C12H12	000575-37-1	94
5		Naphthalene, 1,6-dimethyl-	156	C12H12	000575-43-9	94



Data Path : Z:\HPCHEM1\BNA G\DATA\BG123015\
 Data File : BG020636.D
 Acq On : 31 Dec 2015 11:22
 Operator : UM/SJ
 Sample : G4802-16DL 5X
 Misc :
 ALS Vial : 43 Sample Multiplier: 1

Instrument :
 BNA_G
 ClientSampled :
 G9D91DL

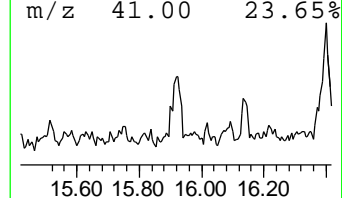
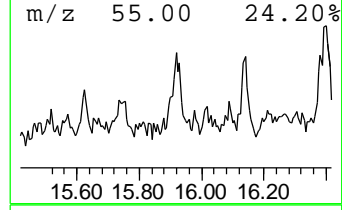
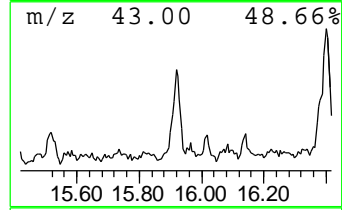
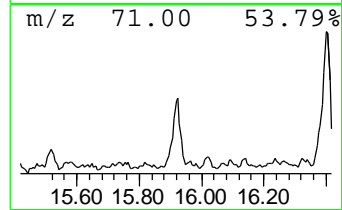
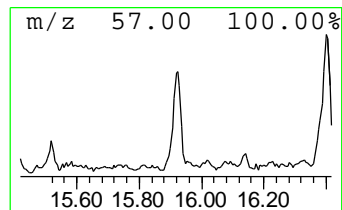
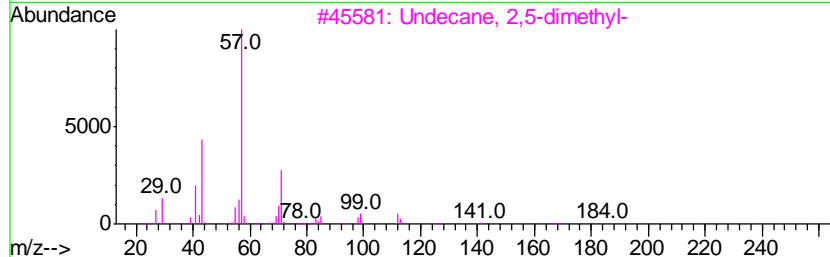
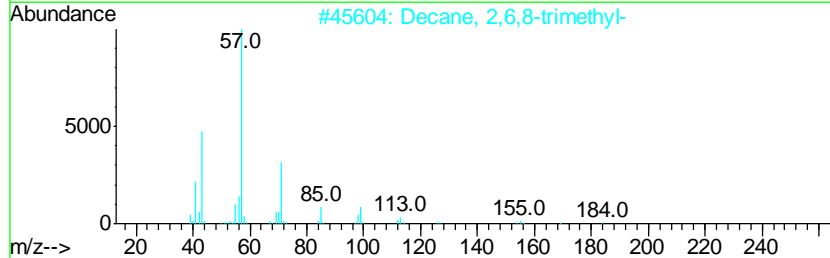
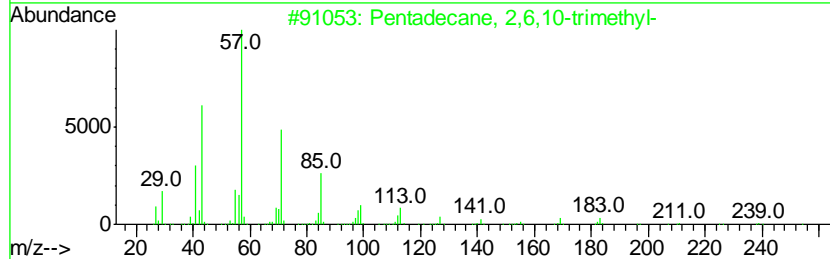
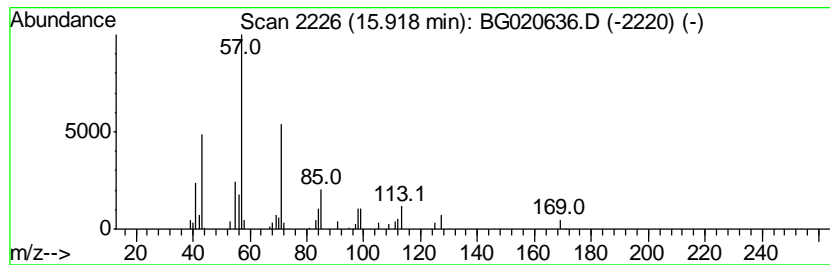
Quant Method : Z:\HPCHEM1\BNA G\METHODS\SOM02.2-EPA-BG123015.M
 Quant Title : SVOA CALIBRATION

TIC Library : C:\DATABASE\NIST02.L
 TIC Integration Parameters: LSCINT.P

 Peak Number 3 Pentadecane, 2,6,10-trimethyl- Concentration Rank 11

R.T.	EstConc	Area	Relative to ISTD	R.T.
15.92	2.36 ng/ul	34568	Acenaphthene-d10	14.70

Hit#	of	Tentative ID	MW	MolForm	CAS#	Qual
1	5	Pentadecane, 2,6,10-trimethyl-	254	C18H38	003892-00-0	90
2		Decane, 2,6,8-trimethyl-	184	C13H28	062108-26-3	76
3		Undecane, 2,5-dimethyl-	184	C13H28	017301-22-3	64
4		Pentadecane, 2,6,10,14-tetramethyl-	268	C19H40	001921-70-6	64
5		Eicosane	282	C20H42	000112-95-8	59



Data Path : Z:\HPCHEM1\BNA G\DATA\BG123015\
 Data File : BG020636.D
 Acq On : 31 Dec 2015 11:22
 Operator : UM/SJ
 Sample : G4802-16DL 5X
 Misc :
 ALS Vial : 43 Sample Multiplier: 1

Instrument :
 BNA_G
 ClientSampled :
 G9D91DL

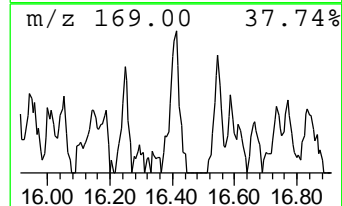
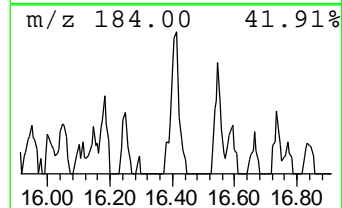
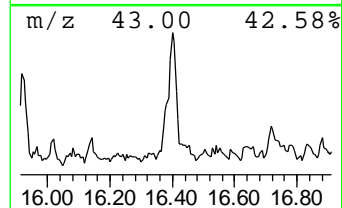
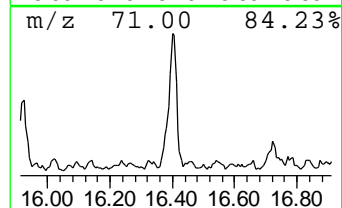
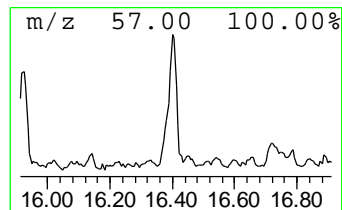
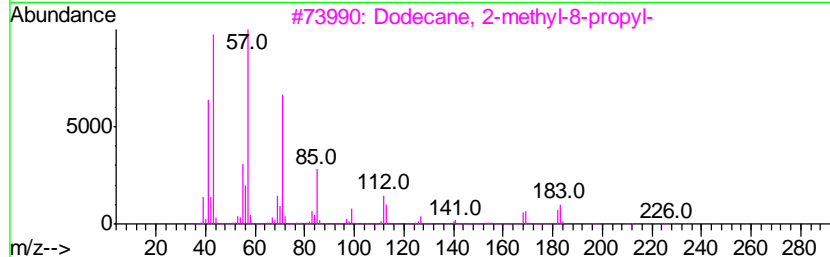
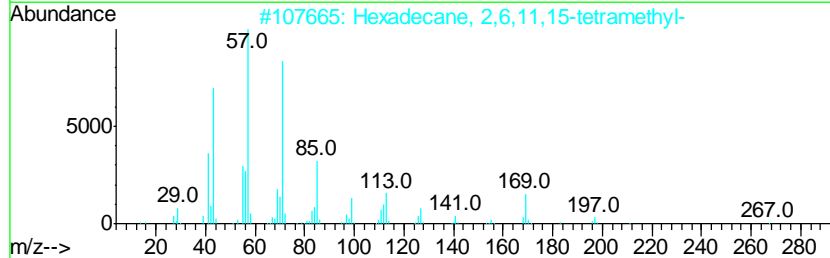
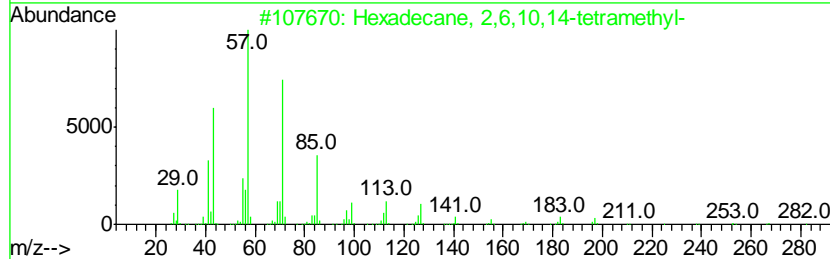
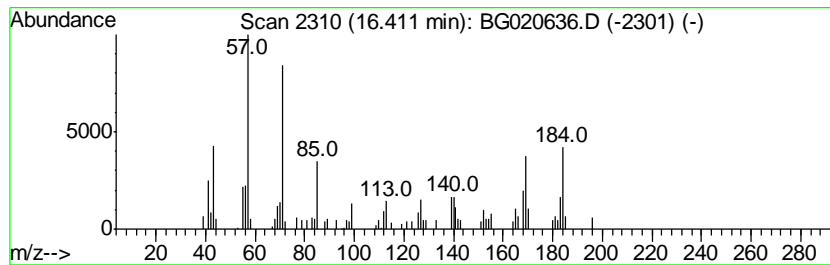
Quant Method : Z:\HPCHEM1\BNA G\METHODS\SOM02.2-EPA-BG123015.M
 Quant Title : SVOA CALIBRATION

TIC Library : C:\DATABASE\NIST02.L
 TIC Integration Parameters: LSCINT.P

 Peak Number 4 Hexadecane, 2,6,10,14-tetra... Concentration Rank 6

R.T.	EstConc	Area	Relative to ISTD	R.T.
16.41	4.26 ng/ul	85125	Phenanthrene-d10	17.45

Hit#	of	Tentative ID	MW	MolForm	CAS#	Qual
1	5	Hexadecane, 2,6,10,14-tetramethyl-	282	C20H42	000638-36-8	62
2		Hexadecane, 2,6,11,15-tetramethyl-	282	C20H42	000504-44-9	62
3		Dodecane, 2-methyl-8-propyl-	226	C16H34	055045-07-3	53
4		Dodecane, 2,6,11-trimethyl-	212	C15H32	031295-56-4	52
5		Dodecane, 2,7,10-trimethyl-	212	C15H32	074645-98-0	50



Data Path : Z:\HPCHEM1\BNA G\DATA\BG123015\
 Data File : BG020636.D
 Acq On : 31 Dec 2015 11:22
 Operator : UM/SJ
 Sample : G4802-16DL 5X
 Misc :
 ALS Vial : 43 Sample Multiplier: 1

Instrument :
 BNA_G
 ClientSampled :
 G9D91DL

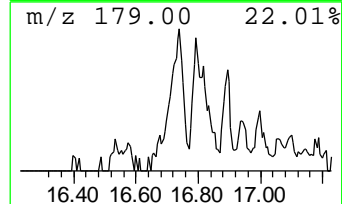
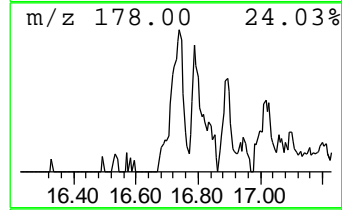
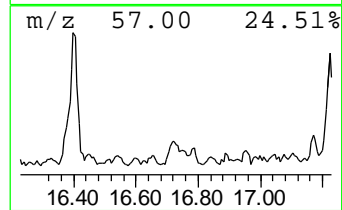
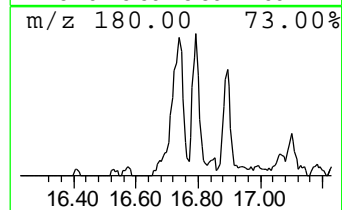
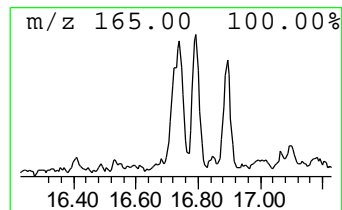
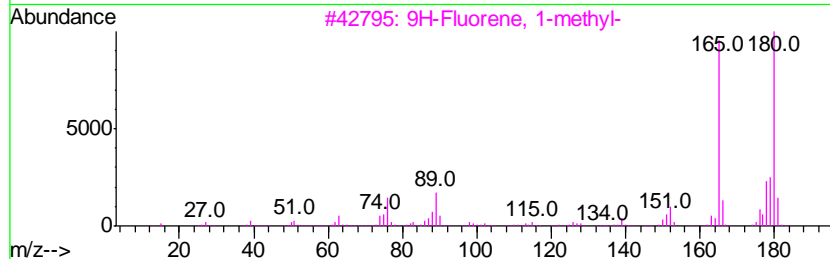
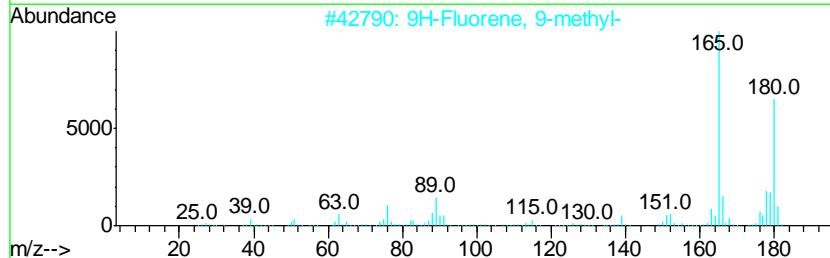
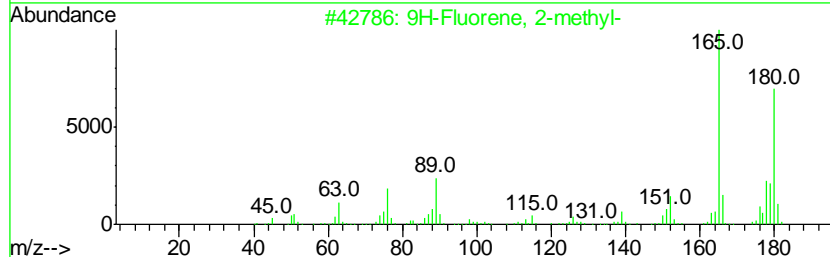
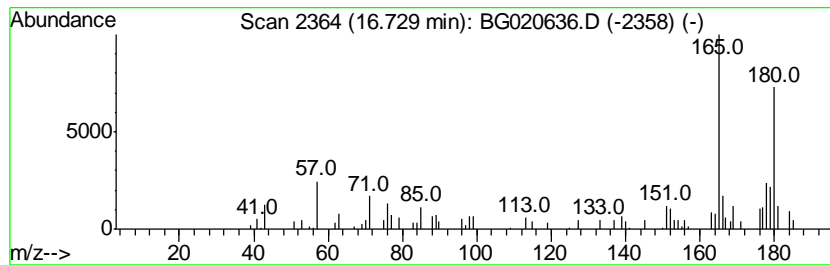
Quant Method : Z:\HPCHEM1\BNA G\METHODS\SOM02.2-EPA-BG123015.M
 Quant Title : SVOA CALIBRATION

TIC Library : C:\DATABASE\NIST02.L
 TIC Integration Parameters: LSCINT.P

 Peak Number 5 9H-Fluorene, 2-methyl- Concentration Rank 7

R.T.	EstConc	Area	Relative to ISTD	R.T.
16.73	3.47 ng/ul	69314	Phenanthrene-d10	17.45

Hit#	of	Tentative ID	MW	MolForm	CAS#	Qual
1	5	9H-Fluorene, 2-methyl-	180	C14H12	001430-97-3	95
2		9H-Fluorene, 9-methyl-	180	C14H12	002523-37-7	90
3		9H-Fluorene, 1-methyl-	180	C14H12	001730-37-6	90
4		9H-Fluorene, 2-methyl-	180	C14H12	001430-97-3	90
5		9H-Fluorene, 1-methyl-	180	C14H12	001730-37-6	90



Data Path : Z:\HPCHEM1\BNA G\DATA\BG123015\
 Data File : BG020636.D
 Acq On : 31 Dec 2015 11:22
 Operator : UM/SJ
 Sample : G4802-16DL 5X
 Misc :
 ALS Vial : 43 Sample Multiplier: 1

Instrument :
 BNA_G
 ClientSampleID :
 G9D91DL

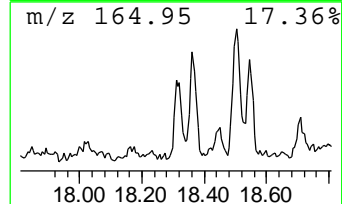
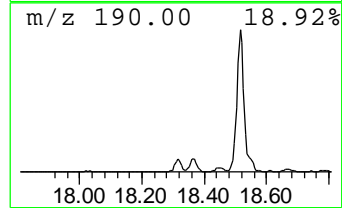
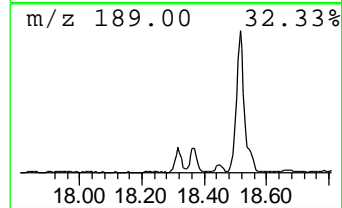
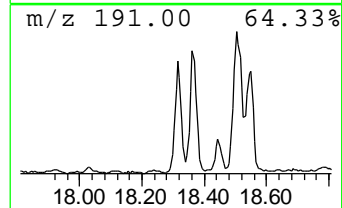
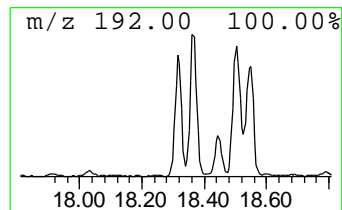
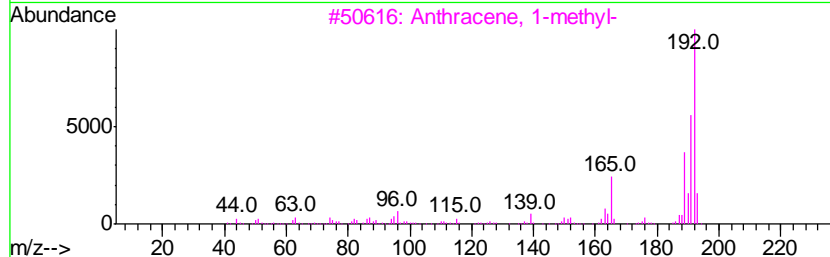
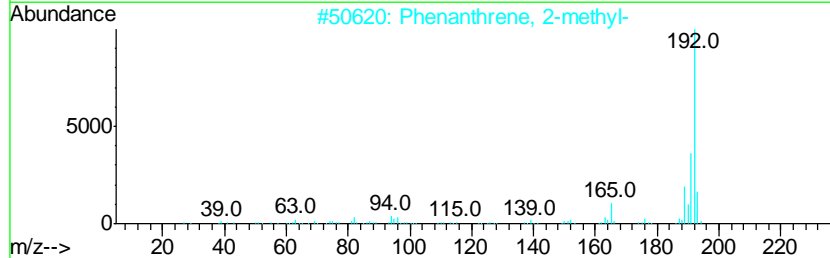
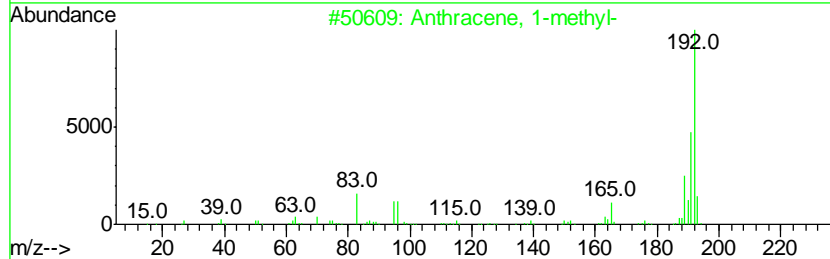
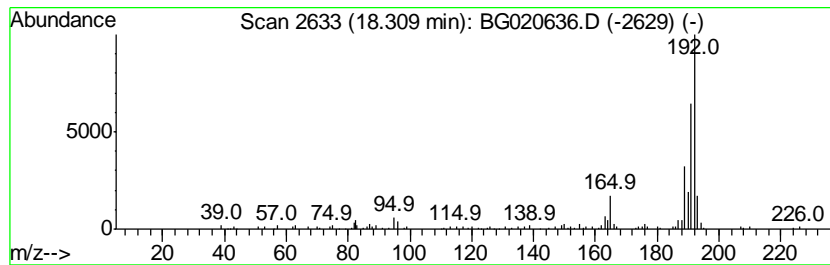
Quant Method : Z:\HPCHEM1\BNA G\METHODS\SOM02.2-EPA-BG123015.M
 Quant Title : SVOA CALIBRATION

TIC Library : C:\DATABASE\NIST02.L
 TIC Integration Parameters: LSCINT.P

 Peak Number 6 Anthracene, 1-methyl- Concentration Rank 3

R.T.	EstConc	Area	Relative to ISTD	R.T.
18.31	5.44 ng/ul	108859	Phenanthrene-d10	17.45

Hit#	of	Tentative ID	MW	MolForm	CAS#	Qual
1	5	Anthracene, 1-methyl-	192	C15H12	000610-48-0	94
2		Phenanthrene, 2-methyl-	192	C15H12	002531-84-2	94
3		Anthracene, 1-methyl-	192	C15H12	000610-48-0	93
4		Phenanthrene, 2-methyl-	192	C15H12	002531-84-2	93
5		Phenanthrene, 1-methyl-	192	C15H12	000832-69-9	93



Data Path : Z:\HPCHEM1\BNA G\DATA\BG123015\
 Data File : BG020636.D
 Acq On : 31 Dec 2015 11:22
 Operator : UM/SJ
 Sample : G4802-16DL 5X
 Misc :
 ALS Vial : 43 Sample Multiplier: 1

Instrument :
 BNA_G
 ClientSampleID :
 G9D91DL

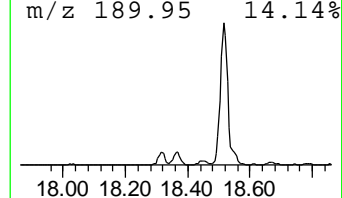
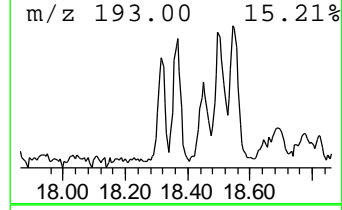
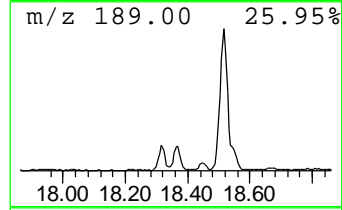
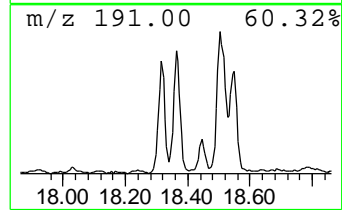
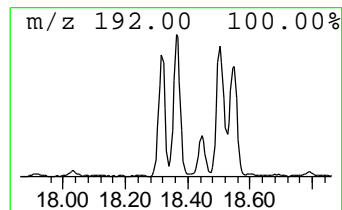
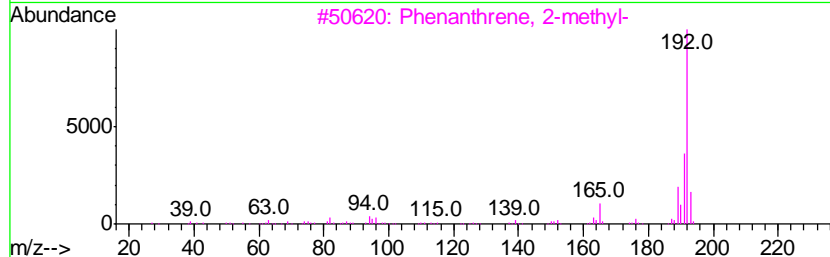
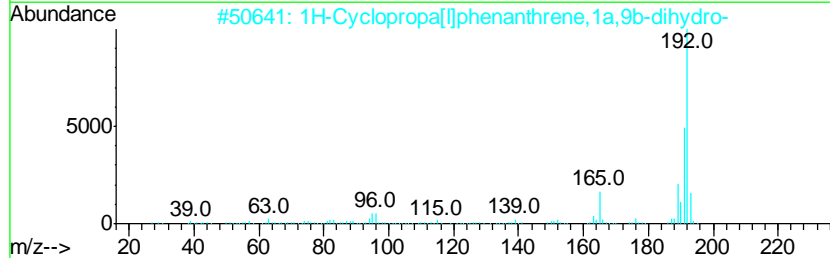
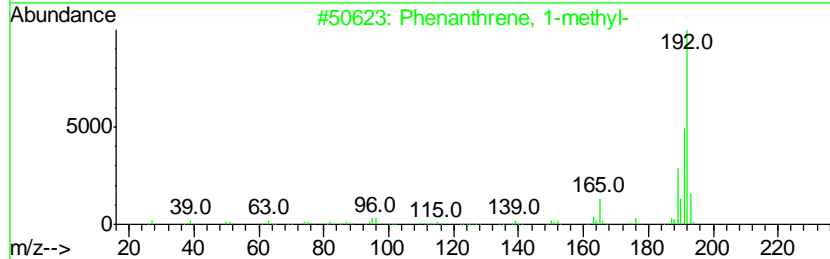
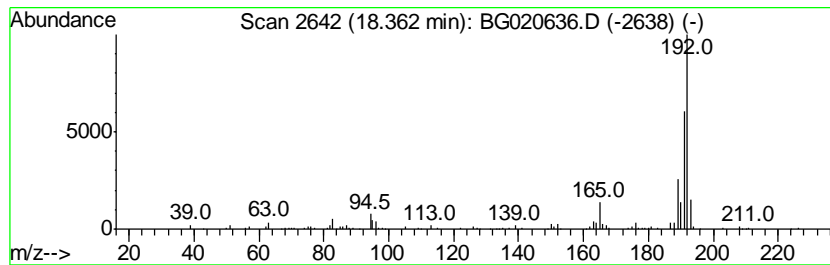
Quant Method : Z:\HPCHEM1\BNA G\METHODS\SOM02.2-EPA-BG123015.M
 Quant Title : SVOA CALIBRATION

TIC Library : C:\DATABASE\NIST02.L
 TIC Integration Parameters: LSCINT.P

 Peak Number 7 Phenanthrene, 1-methyl- Concentration Rank 2

R.T.	EstConc	Area	Relative to ISTD	R.T.
18.36	6.10 ng/ul	121954	Phenanthrene-d10	17.45

Hit#	of	Tentative ID	MW	MolForm	CAS#	Qual
1	5	Phenanthrene, 1-methyl-	192	C15H12	000832-69-9	97
2		1H-Cyclopropa[1]phenanthrene,1a,...	192	C15H12	000949-41-7	95
3		Phenanthrene, 2-methyl-	192	C15H12	002531-84-2	95
4		Phenanthrene, 1-methyl-	192	C15H12	000832-69-9	95
5		Phenanthrene, 2-methyl-	192	C15H12	002531-84-2	95



Data Path : Z:\HPCHEM1\BNA G\DATA\BG123015\
 Data File : BG020636.D
 Acq On : 31 Dec 2015 11:22
 Operator : UM/SJ
 Sample : G4802-16DL 5X
 Misc :
 ALS Vial : 43 Sample Multiplier: 1

Instrument :
 BNA_G
 ClientSampleID :
 G9D91DL

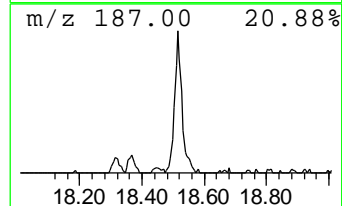
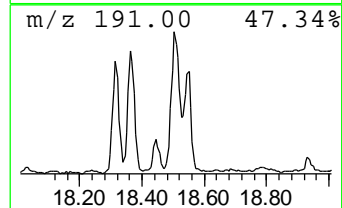
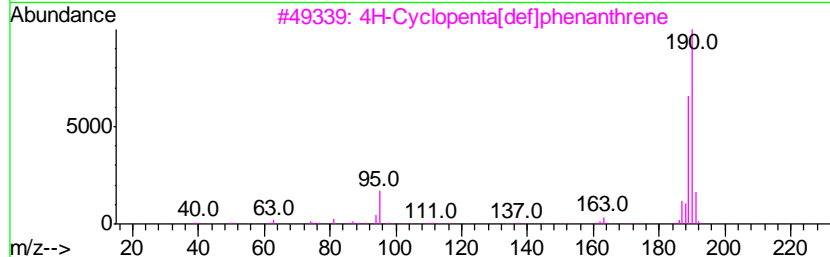
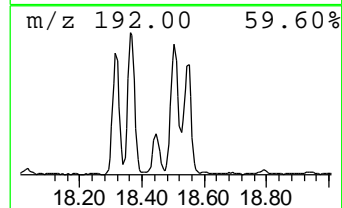
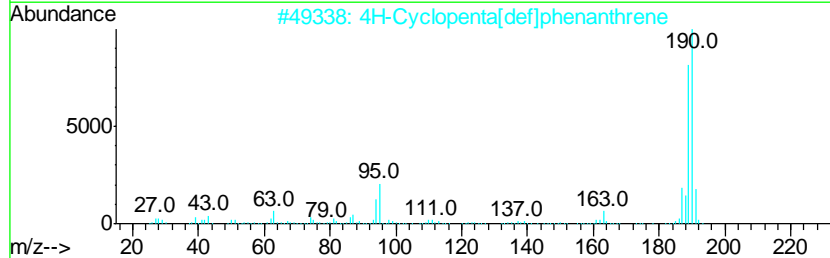
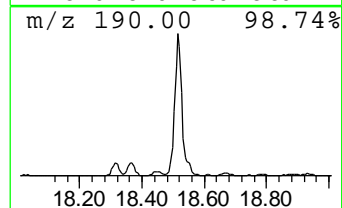
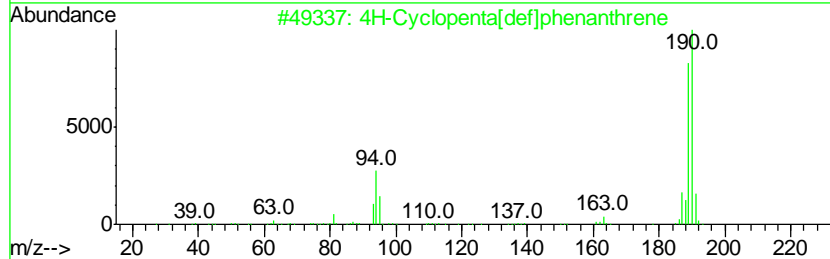
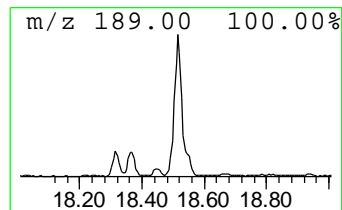
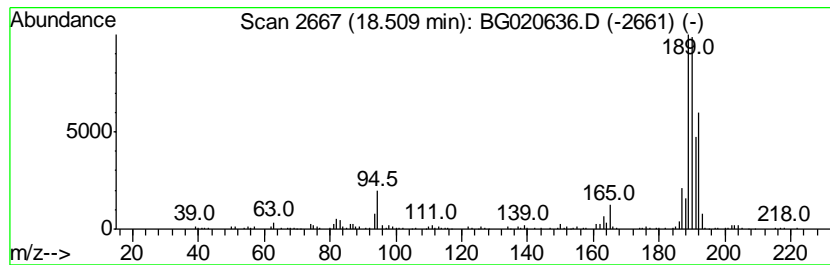
Quant Method : Z:\HPCHEM1\BNA G\METHODS\SOM02.2-EPA-BG123015.M
 Quant Title : SVOA CALIBRATION

TIC Library : C:\DATABASE\NIST02.L
 TIC Integration Parameters: LSCINT.P

 Peak Number 8 4H-Cyclopenta[def]phenanthrene Concentration Rank 1

R.T.	EstConc	Area	Relative to ISTD	R.T.
18.51	16.74 ng/ul	334730	Phenanthrene-d10	17.45

Hit#	of	Tentative ID	MW	MolForm	CAS#	Qual
1	5	4H-Cyclopenta[def]phenanthrene	190	C15H10	000203-64-5	81
2		4H-Cyclopenta[def]phenanthrene	190	C15H10	000203-64-5	76
3		4H-Cyclopenta[def]phenanthrene	190	C15H10	000203-64-5	72
4		6H-Cyclobuta[ik]phenanthrene	190	C15H10	083469-43-6	50
5		2,3,5,6-Tetramethylterephthalald...	190	C12H14O2	007072-01-7	50



Data Path : Z:\HPCHEM1\BNA G\DATA\BG123015\
 Data File : BG020636.D
 Acq On : 31 Dec 2015 11:22
 Operator : UM/SJ
 Sample : G4802-16DL 5X
 Misc :
 ALS Vial : 43 Sample Multiplier: 1

Instrument :
 BNA_G
 ClientSampleID :
 G9D91DL

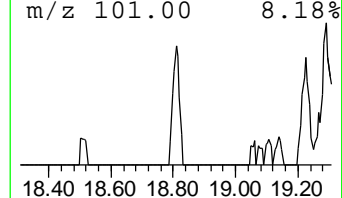
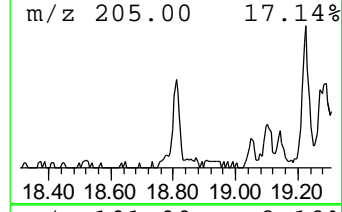
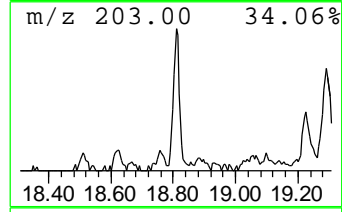
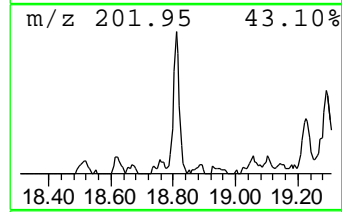
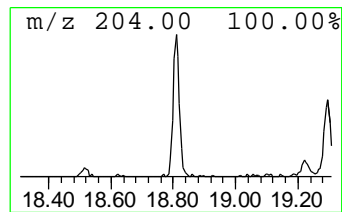
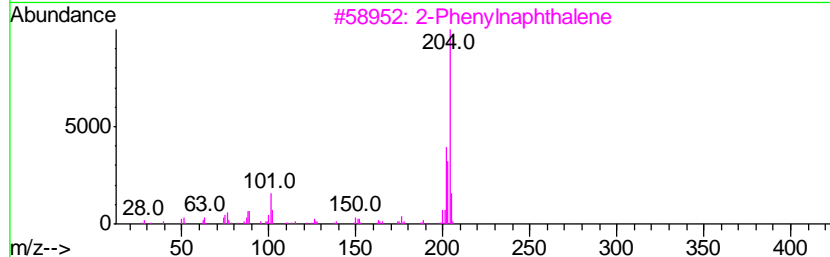
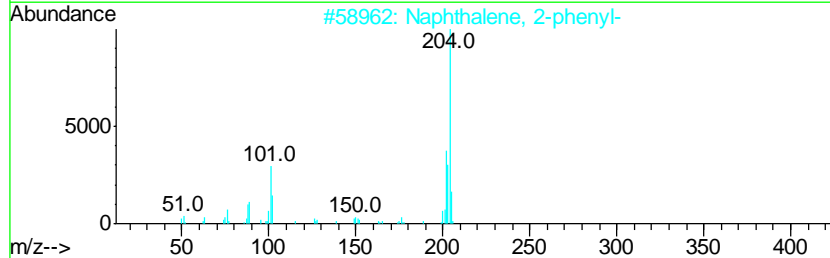
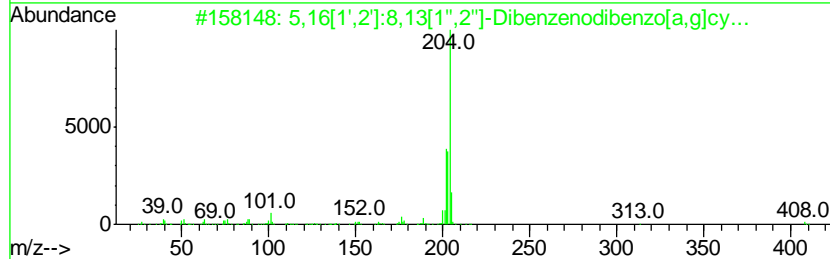
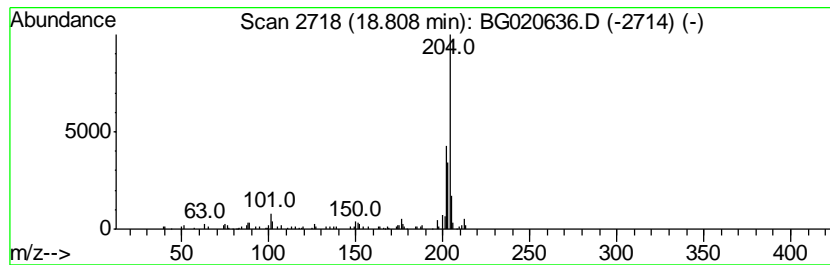
Quant Method : Z:\HPCHEM1\BNA G\METHODS\SOM02.2-EPA-BG123015.M
 Quant Title : SVOA CALIBRATION

TIC Library : C:\DATABASE\NIST02.L
 TIC Integration Parameters: LSCINT.P

 Peak Number 9 5,16[1',2']:8,13[1'',2'']-D... Concentration Rank 8

R.T.	EstConc	Area	Relative to ISTD	R.T.
18.81	2.95 ng/ul	59090	Phenanthrene-d10	17.45

Hit#	of	Tentative ID	MW	MolForm	CAS#	Qual
1	5	5,16[1',2']:8,13[1'',2'']-Dibenz...	408	C32H24	005672-97-9	87
2		Naphthalene, 2-phenyl-	204	C16H12	000612-94-2	83
3		2-Phenylnaphthalene	204	C16H12	035465-71-5	83
4		Naphthalene, 2-phenyl-	204	C16H12	000612-94-2	58
5		9,10-Bis(bromomethyl)anthracene	362	C16H12Br2	034373-96-1	53



Data Path : Z:\HPCHEM1\BNA G\DATA\BG123015\
 Data File : BG020636.D
 Acq On : 31 Dec 2015 11:22
 Operator : UM/SJ
 Sample : G4802-16DL 5X
 Misc :
 ALS Vial : 43 Sample Multiplier: 1

Instrument :
 BNA_G
 ClientSampleID :
 G9D91DL

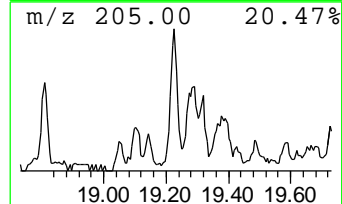
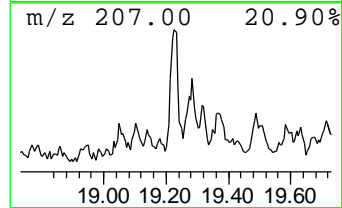
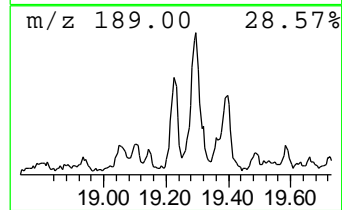
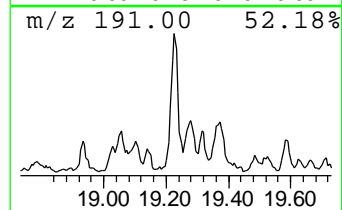
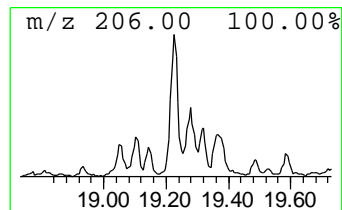
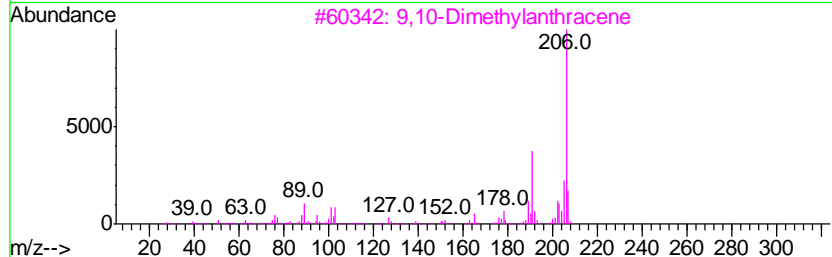
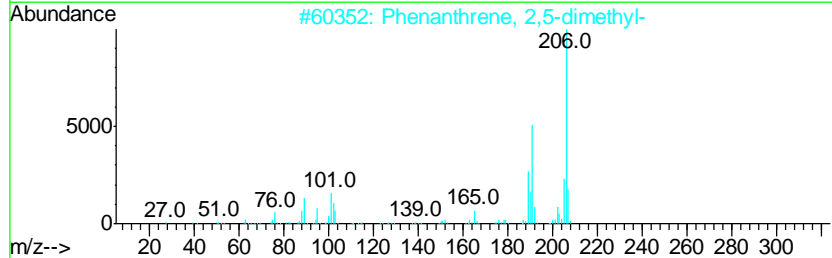
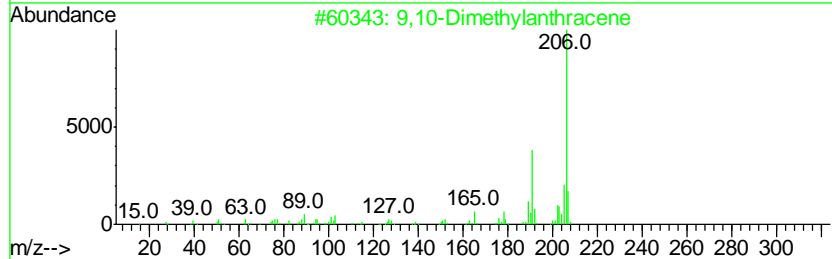
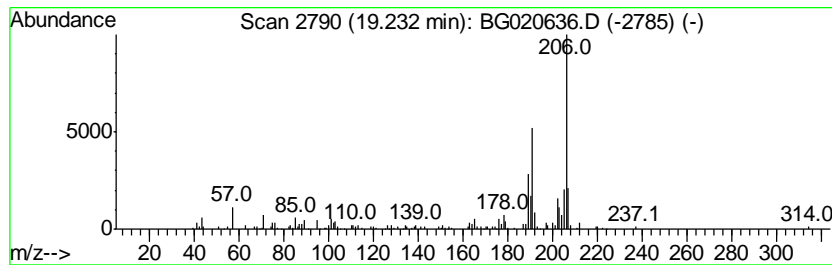
Quant Method : Z:\HPCHEM1\BNA G\METHODS\SOM02.2-EPA-BG123015.M
 Quant Title : SVOA CALIBRATION

TIC Library : C:\DATABASE\NIST02.L
 TIC Integration Parameters: LSCINT.P

 Peak Number 10 9,10-Dimethylantracene Concentration Rank 5

R.T.	EstConc	Area	Relative to ISTD	R.T.
19.23	5.18 ng/ul	103606	Phenanthrene-d10	17.45

Hit#	of	Tentative ID	MW	MolForm	CAS#	Qual
1	5	9,10-Dimethylantracene	206	C16H14	000781-43-1	97
2		Phenanthrene, 2,5-dimethyl-	206	C16H14	003674-66-6	93
3		9,10-Dimethylantracene	206	C16H14	000781-43-1	91
4		di-p-Tolylacetylene	206	C16H14	002789-88-0	91
5		9,10-Dimethylantracene	206	C16H14	000781-43-1	90



Data Path : Z:\HPCHEM1\BNA G\DATA\BG123015\
 Data File : BG020636.D
 Acq On : 31 Dec 2015 11:22
 Operator : UM/SJ
 Sample : G4802-16DL 5X
 Misc :
 ALS Vial : 43 Sample Multiplier: 1

Instrument :
 BNA_G
 ClientSampleID :
 G9D91DL

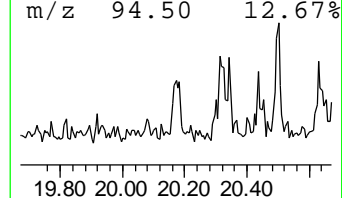
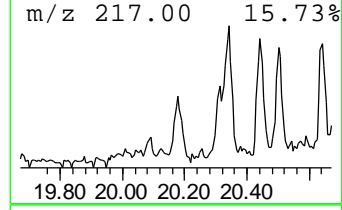
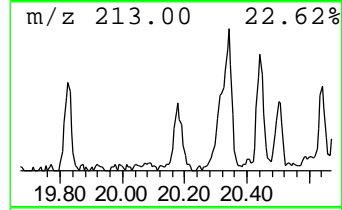
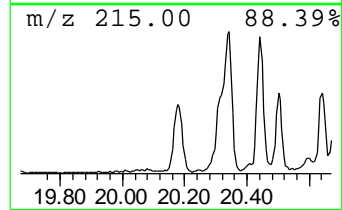
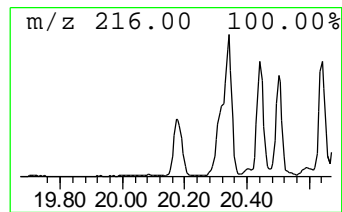
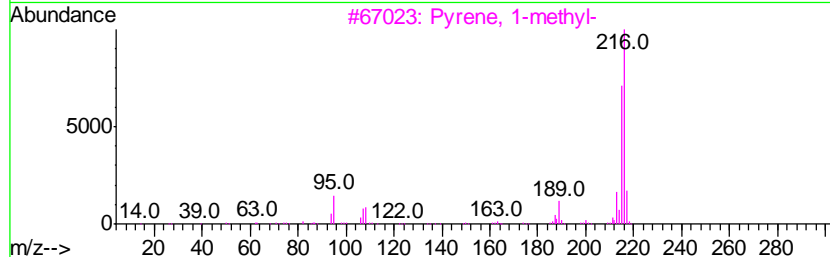
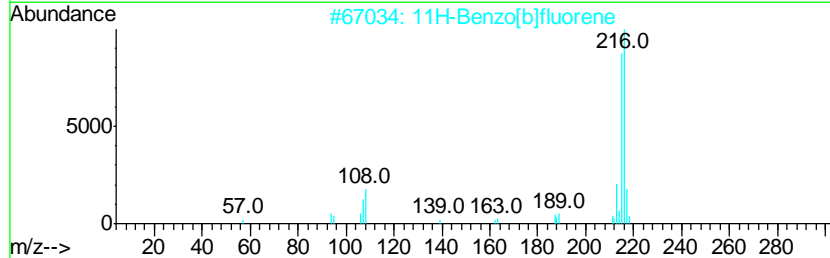
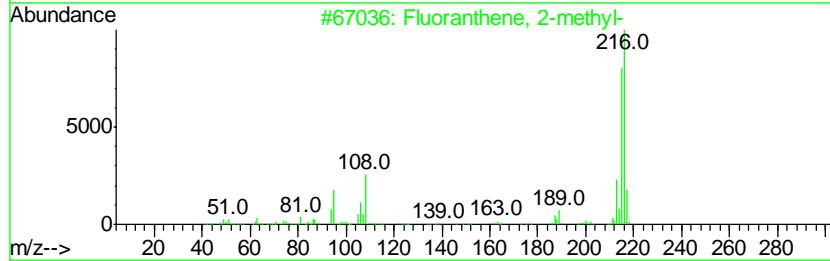
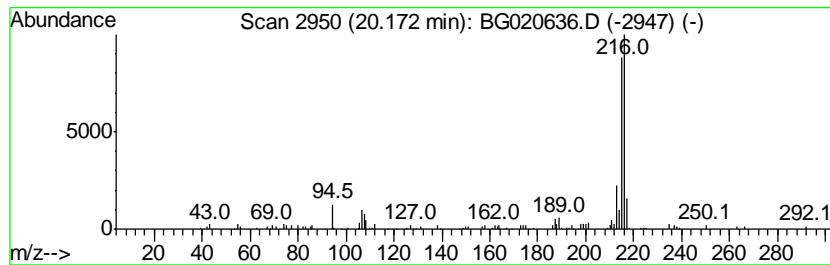
Quant Method : Z:\HPCHEM1\BNA G\METHODS\SOM02.2-EPA-BG123015.M
 Quant Title : SVOA CALIBRATION

TIC Library : C:\DATABASE\NIST02.L
 TIC Integration Parameters: LSCINT.P

 Peak Number 11 Fluoranthene, 2-methyl- Concentration Rank 14

R.T.	EstConc	Area	Relative to ISTD	R.T.
20.17	2.15 ng/ul	86132	Chrysene-d12	21.72

Hit#	of	Tentative ID	MW	MolForm	CAS#	Qual
1	5	Fluoranthene, 2-methyl-	216	C17H12	033543-31-6	91
2		11H-Benzo[b]fluorene	216	C17H12	000243-17-4	87
3		Pyrene, 1-methyl-	216	C17H12	002381-21-7	83
4		11H-Benzo[a]fluorene	216	C17H12	000238-84-6	80
5		Fluoranthene, 2-methyl-	216	C17H12	033543-31-6	76



Data Path : Z:\HPCHEM1\BNA G\DATA\BG123015\
 Data File : BG020636.D
 Acq On : 31 Dec 2015 11:22
 Operator : UM/SJ
 Sample : G4802-16DL 5X
 Misc :
 ALS Vial : 43 Sample Multiplier: 1

Instrument :
 BNA_G
 ClientSampleID :
 G9D91DL

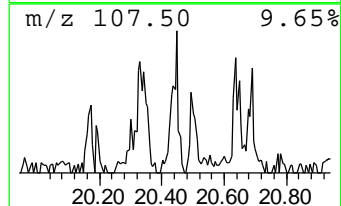
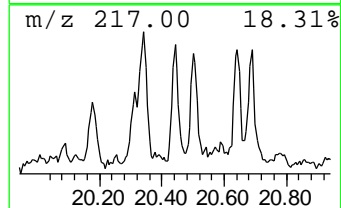
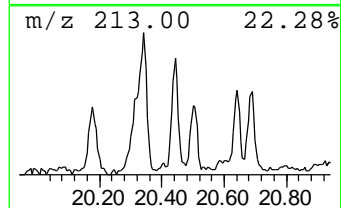
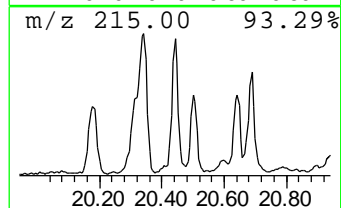
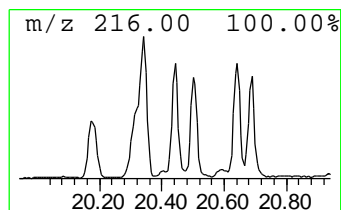
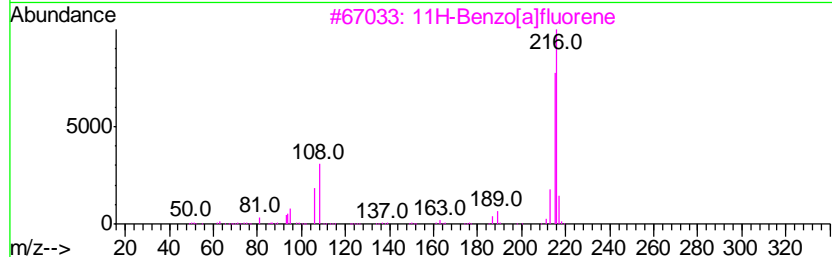
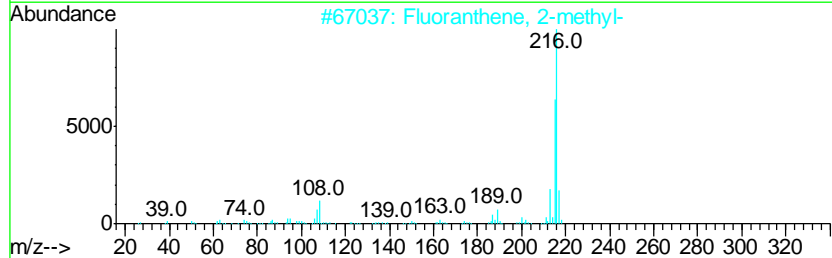
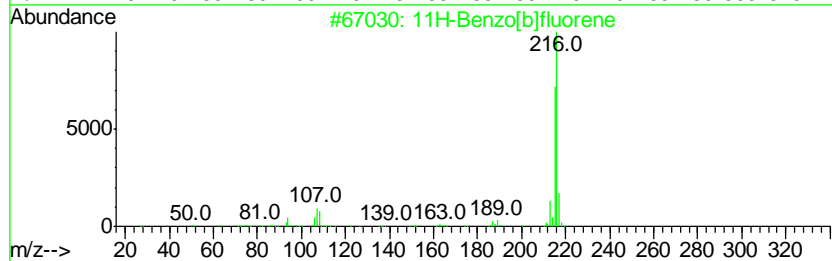
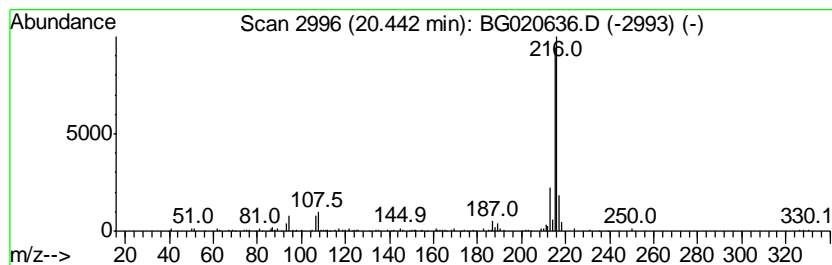
Quant Method : Z:\HPCHEM1\BNA G\METHODS\SOM02.2-EPA-BG123015.M
 Quant Title : SVOA CALIBRATION

TIC Library : C:\DATABASE\NIST02.L
 TIC Integration Parameters: LSCINT.P

 Peak Number 12 11H-Benzo[b]fluorene Concentration Rank 12

R.T.	EstConc	Area	Relative to ISTD	R.T.
20.44	2.18 ng/ul	87500	Chrysene-d12	21.72

Hit#	of	Tentative ID	MW	MolForm	CAS#	Qual
1	5	11H-Benzo[b]fluorene	216	C17H12	000243-17-4	96
2		Fluoranthene, 2-methyl-	216	C17H12	033543-31-6	80
3		11H-Benzo[a]fluorene	216	C17H12	000238-84-6	80
4		Fluoranthene, 2-methyl-	216	C17H12	033543-31-6	80
5		Benzoic acid, 3-(3,5-dimethyl-1-...	216	C12H12N2O2	312531-88-7	64



Data Path : Z:\HPCHEM1\BNA G\DATA\BG123015\
 Data File : BG020636.D
 Acq On : 31 Dec 2015 11:22
 Operator : UM/SJ
 Sample : G4802-16DL 5X
 Misc :
 ALS Vial : 43 Sample Multiplier: 1

Instrument :
 BNA_G
 ClientSampled :
 G9D91DL

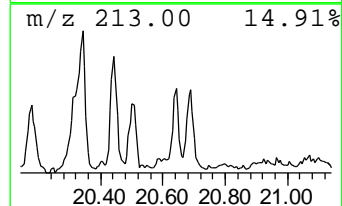
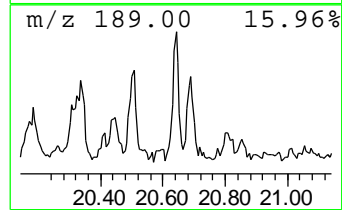
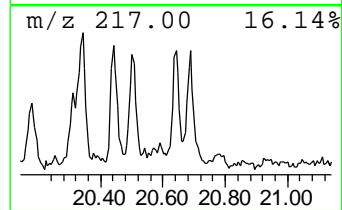
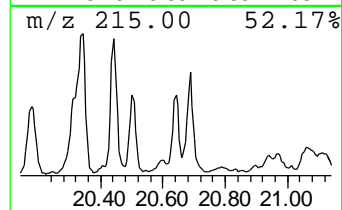
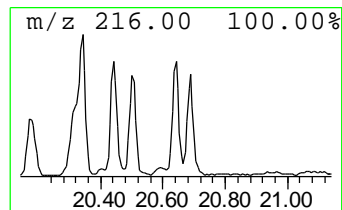
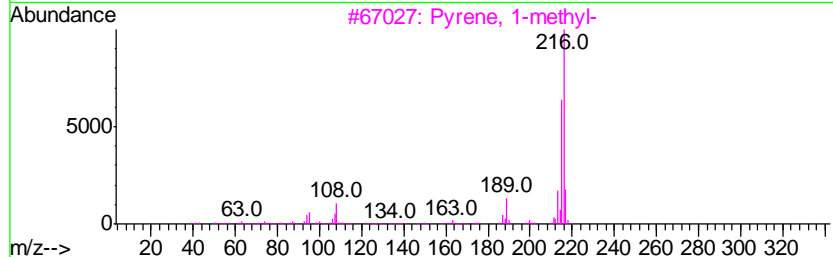
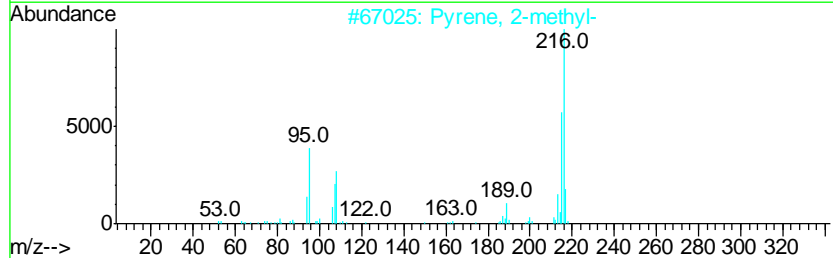
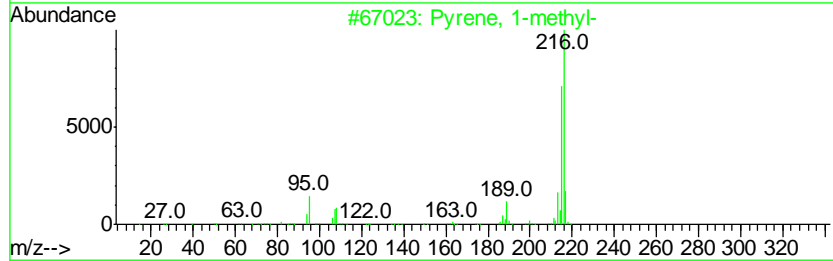
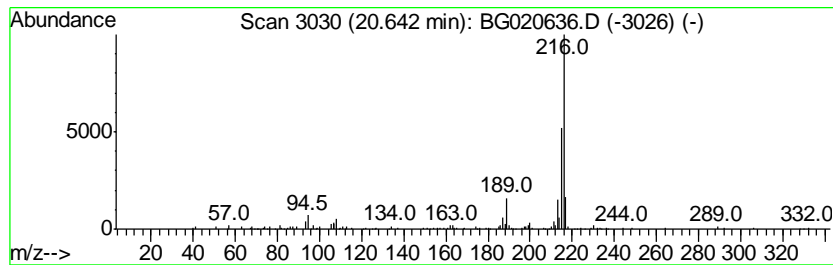
Quant Method : Z:\HPCHEM1\BNA G\METHODS\SOM02.2-EPA-BG123015.M
 Quant Title : SVOA CALIBRATION

TIC Library : C:\DATABASE\NIST02.L
 TIC Integration Parameters: LSCINT.P

 Peak Number 14 Pyrene, 1-methyl- Concentration Rank 15

R.T.	EstConc	Area	Relative to ISTD	R.T.
20.64	2.15 ng/ul	85973	Chrysene-d12	21.72

Hit#	of	Tentative ID	MW	MolForm	CAS#	Qual
1	5	Pyrene, 1-methyl-	216	C17H12	002381-21-7	94
2		Pyrene, 2-methyl-	216	C17H12	003442-78-2	94
3		Pyrene, 1-methyl-	216	C17H12	002381-21-7	93
4		Pyrene, 2-methyl-	216	C17H12	003442-78-2	93
5		Pyrene, 1-methyl-	216	C17H12	002381-21-7	93



Data Path : Z:\HPCHEM1\BNA_G\DATA\BG123015\
 Data File : BG020636.D
 Acq On : 31 Dec 2015 11:22
 Operator : UM/SJ
 Sample : G4802-16DL 5X
 Misc :
 ALS Vial : 43 Sample Multiplier: 1

Instrument :
 BNA_G
 ClientSampleID :
 G9D91DL

Quant Method : Z:\HPCHEM1\BNA_G\METHODS\SOM02.2-EPA-BG123015.M
 Quant Title : SVOA CALIBRATION

TIC Library : C:\DATABASE\NIST02.L
 TIC Integration Parameters: LSCINT.P

TIC Top Hit name	RT	EstConc	Units	Response	--Internal Standard--			
					#	RT	Resp	Conc
Naphthalene, 2,7-...	14.01	2.2	ng/ul	31913	3	14.70	293460	20.0
Pentadecane, 2,6,...	15.92	2.4	ng/ul	34568	3	14.70	293460	20.0
Hexadecane, 2,6,1...	16.41	4.3	ng/ul	85125	4	17.45	399982	20.0
9H-Fluorene, 2-me...	16.73	3.5	ng/ul	69314	4	17.45	399982	20.0
Anthracene, 1-met...	18.31	5.4	ng/ul	108859	4	17.45	399982	20.0
Phenanthrene, 1-m...	18.36	6.1	ng/ul	121954	4	17.45	399982	20.0
4H-Cyclopenta[def...	18.51	16.7	ng/ul	334730	4	17.45	399982	20.0
5,16[1',2']:8,13[...	18.81	3.0	ng/ul	59090	4	17.45	399982	20.0
9,10-Dimethylanth...	19.23	5.2	ng/ul	103606	4	17.45	399982	20.0
Fluoranthene, 2-m...	20.17	2.1	ng/ul	86132	5	21.72	801030	20.0
11H-Benzo[b]fluorene	20.44	2.2	ng/ul	87500	5	21.72	801030	20.0
Pyrene, 1-methyl-	20.64	2.1	ng/ul	85973	5	21.72	801030	20.0