

Data Path : Z:\HPCHEM1\BNA_G\DATA\BG123115\
 Data File : BG020647.D
 Acq On : 31 Dec 2015 18:34
 Operator : UM/SJ
 Sample : G4847-06DL 100X
 Misc :
 ALS Vial : 49 Sample Multiplier: 1

Instrument :
 BNA_G
 ClientSampleId :
 D9N70DL

Quant Time: Jan 01 03:20:45 2016
 Quant Method : Z:\HPCHEM1\BNA_G\METHODS\SOM02.2-EPA-BG123015.M
 Quant Title : SVOA CALIBRATION
 QLast Update : Fri Jan 01 03:15:46 2016
 Response via : Initial Calibration

Internal Standards	R.T.	QIon	Response	Conc	Units	Dev(Min)
1) 1,4-Dichlorobenzene-d4	8.06	152	19823	20.00	ng/ul	0.00
18) Naphthalene-d8	10.88	136	89138	20.00	ng/ul	0.00
36) Acenaphthene-d10	14.69	164	67603	20.00	ng/ul	0.00
62) Phenanthrene-d10	17.44	188	174366	20.00	ng/ul	0.00
78) Chrysene-d12	21.71	240	209419	20.00	ng/ul	0.00
86) Perylene-d12	24.97	264	197998	20.00	ng/ul	0.00

System Monitoring Compounds

3) 1,4-Dioxane-d8	0.00	96	0	0.00	ng/uL	
5) Phenol-d5	7.39	99	213	0.13	ng/ul	0.17
7) Bis-(2-Chloroethyl)ether-d	0.00	67	0	0.00	ng/ul	
9) 2-Chlorophenol-d4	7.59	132	124	0.10	ng/ul	0.00
13) 4-Methylphenol-d8	8.60	113	145	0.10	ng/ul	-0.17
19) Nitrobenzene-d5	0.00	128	0	0.00	ng/ul	
22) 2-Nitrophenol-d4	0.00	143	0	0.00	ng/ul	
26) 2,4-Dichlorophenol-d3	10.51	165	303	0.20	ng/ul	0.02
29) 4-Chloroaniline-d4	0.00	131	0	0.00	ng/ul	
44) Dimethylphthalate-d6	14.09	166	2487	0.45	ng/ul	0.00
47) Acenaphthylene-d8	14.39	160	2994	0.48	ng/ul	0.00
52) 4-Nitrophenol-d4	0.00	143	0	0.00	ng/ul	
58) Fluorene-d10	15.68	176	2719	0.54	ng/ul	0.00
63) 4,6-Dinitro-2-methylphenol	0.00	200	0	0.00	ng/ul	
71) Anthracene-d10	17.54	188	4710	0.58	ng/ul	0.00
79) Pyrene-d10	19.82	212	4324	0.46	ng/ul	0.00
90) Benzo(a)pyrene-d12	24.73	264	4588	0.46	ng/ul	-0.02

Target Compounds

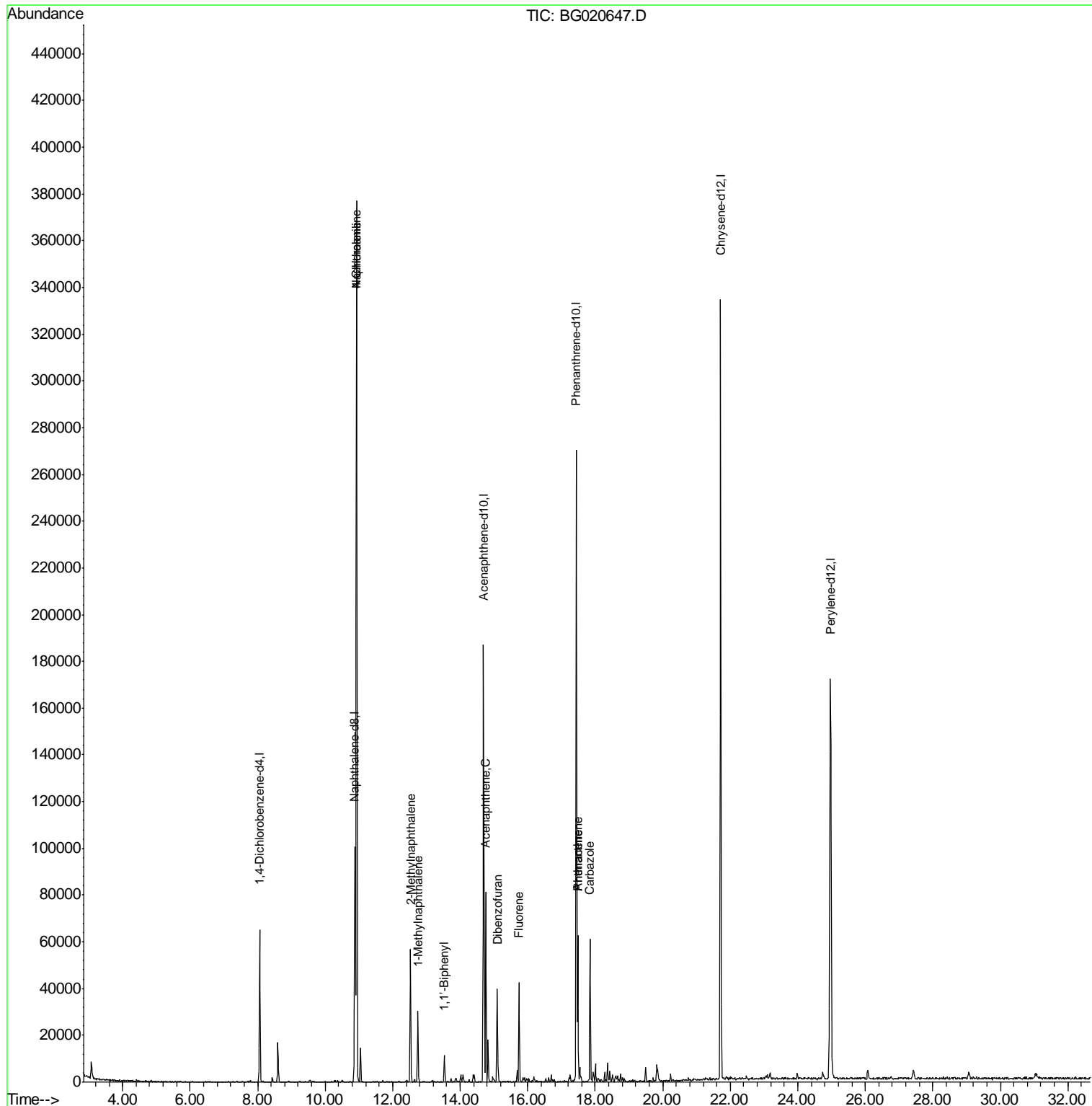
Target Compounds	R.T.	QIon	Response	Conc	Units	Qvalue
28) Naphthalene	10.93	128	322008	68.21	ng/ul	99
30) 4-Chloroaniline	10.93	127	43692	23.59	ng/ul#	8
34) 2-Methylnaphthalene	12.52	142	28038	7.94	ng/ul	99
35) 1-Methylnaphthalene	12.75	142	15453	4.53	ng/ul	96
41) 1,1'-Biphenyl	13.53	154	7215	1.42	ng/ul#	88
50) Acenaphthene	14.76	153	36180	7.99	ng/ul	98
54) Dibenzofuran	15.09	168	28452	4.16	ng/ul	98
59) Fluorene	15.74	166	21111	3.83	ng/ul	97
70) Phenanthrene	17.48	178	40937	4.32	ng/ul	99
72) Anthracene	17.48	178	40937	4.22	ng/ul	98
75) Carbazole	17.85	167	44643	5.46	ng/ul#	98

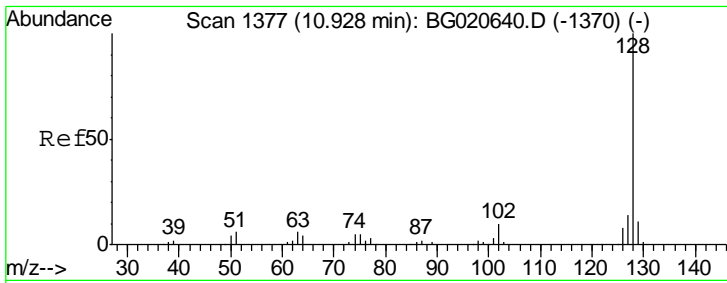
(#) = qualifier out of range (m) = manual integration (+) = signals summed

Data Path : Z:\HPCHEM1\BNA_G\DATA\BG123115\
 Data File : BG020647.D
 Acq On : 31 Dec 2015 18:34
 Operator : UM/SJ
 Sample : G4847-06DL 100X
 Misc :
 ALS Vial : 49 Sample Multiplier: 1

Instrument :
 BNA_G
 ClientSampleId :
 D9N70DL

Quant Time: Jan 01 03:20:45 2016
 Quant Method : Z:\HPCHEM1\BNA_G\METHODS\SOM02.2-EPA-BG123015.M
 Quant Title : SVOA CALIBRATION
 QLast Update : Fri Jan 01 03:15:46 2016
 Response via : Initial Calibration

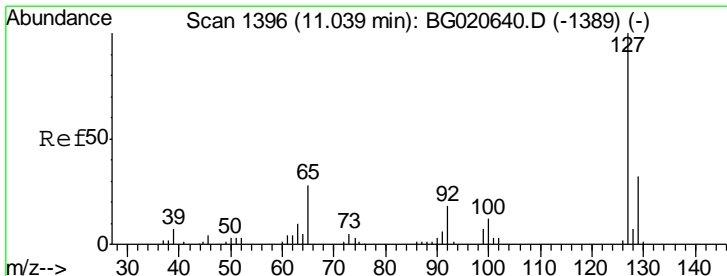
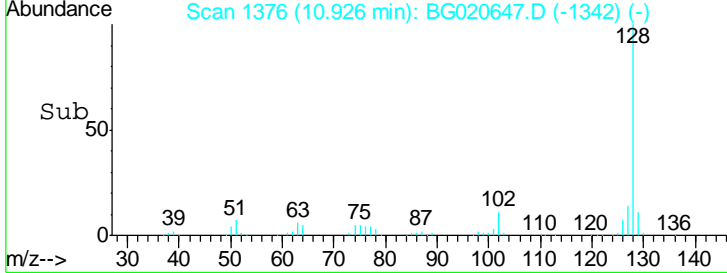
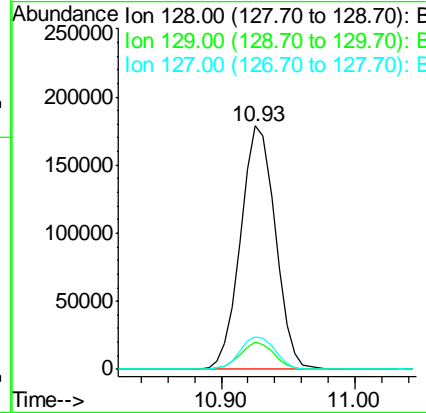
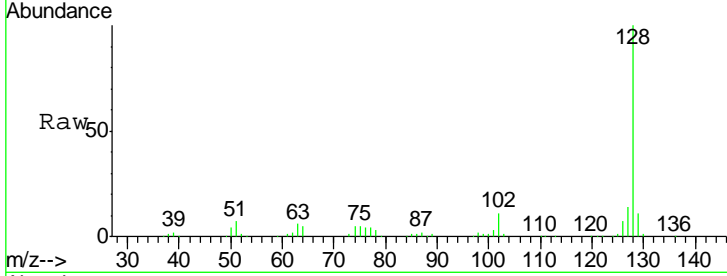




#28
 Naphthalene
 Concen: 68.21 ng/ul
 RT: 10.93 min Scan# 1376
 Delta R.T. -0.00 min
 Lab File: BG020647.D
 Acq: 31 Dec 2015 18:34

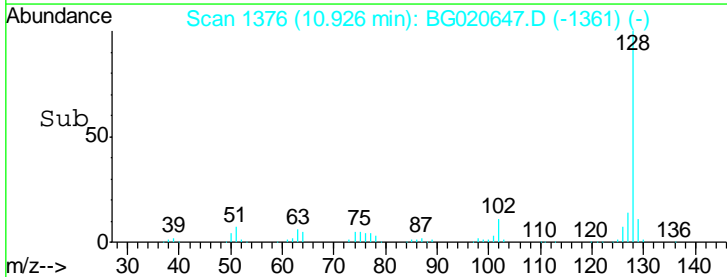
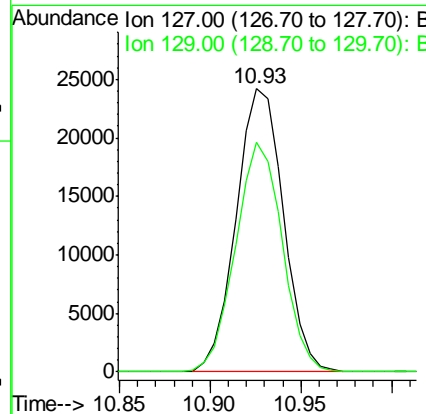
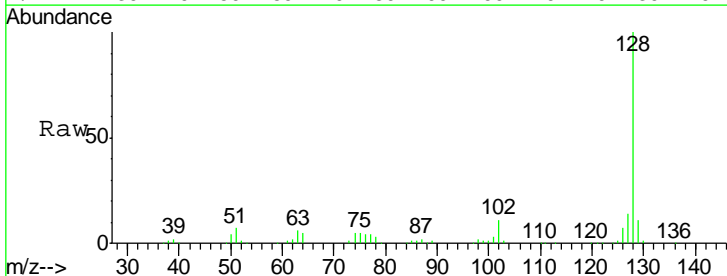
Instrument :
 BNA_G
 ClientSampleID :
 D9N70DL

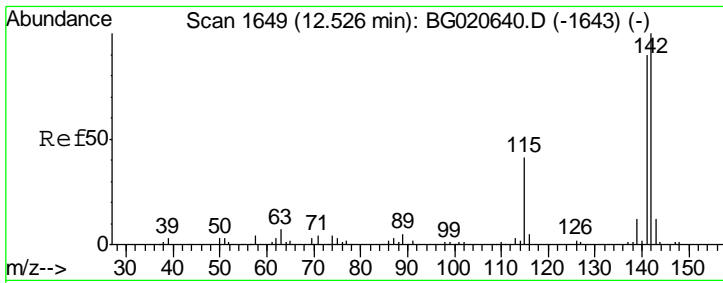
Tgt Ion	Resp	Lower	Upper
128	100		
129	11.0	8.3	12.5
127	13.5	10.8	16.2



#30
 4-Chloroaniline
 Concen: 23.59 ng/ul
 RT: 10.93 min Scan# 1376
 Delta R.T. -0.11 min
 Lab File: BG020647.D
 Acq: 31 Dec 2015 18:34

Tgt Ion	Resp	Lower	Upper
127	100		
129	81.3	24.6	37.0#

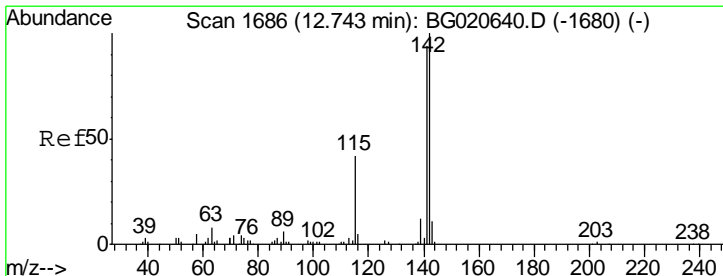
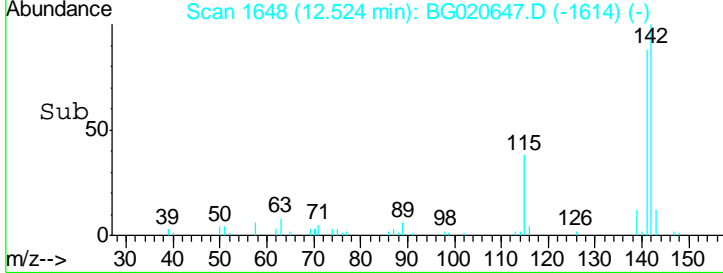
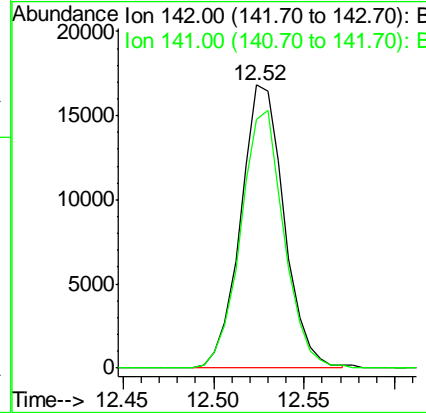
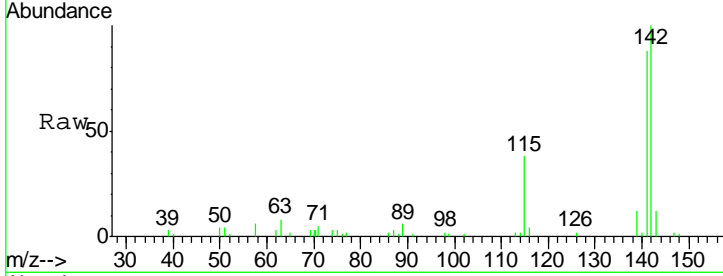




#34
 2-Methylnaphthalene
 Concen: 7.94 ng/ul
 RT: 12.52 min Scan# 1648
 Delta R.T. -0.00 min
 Lab File: BG020647.D
 Acq: 31 Dec 2015 18:34

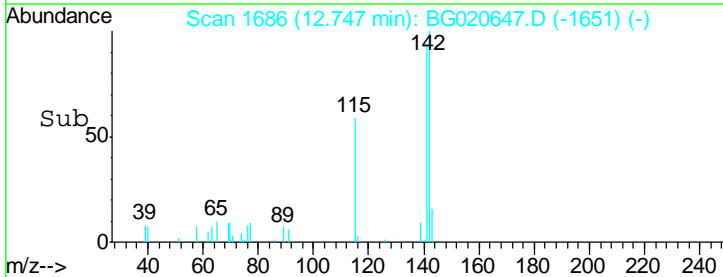
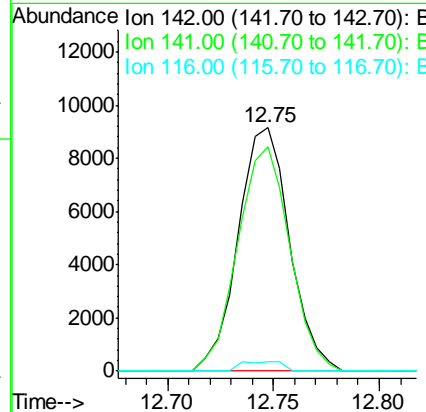
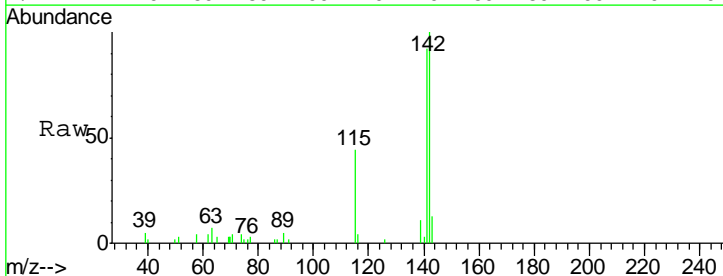
Instrument :
 BNA_G
 ClientSampled :
 D9N70DL

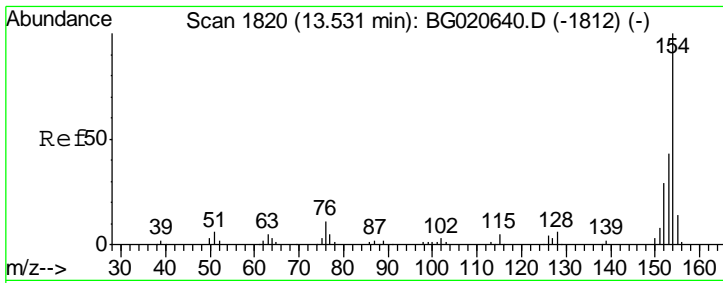
Tgt Ion:142 Resp: 28038
 Ion Ratio Lower Upper
 142 100
 141 88.1 71.4 107.2



#35
 1-Methylnaphthalene
 Concen: 4.53 ng/ul
 RT: 12.75 min Scan# 1686
 Delta R.T. 0.00 min
 Lab File: BG020647.D
 Acq: 31 Dec 2015 18:34

Tgt Ion:142 Resp: 15453
 Ion Ratio Lower Upper
 142 100
 141 92.3 76.6 115.0
 116 4.0 3.6 5.4



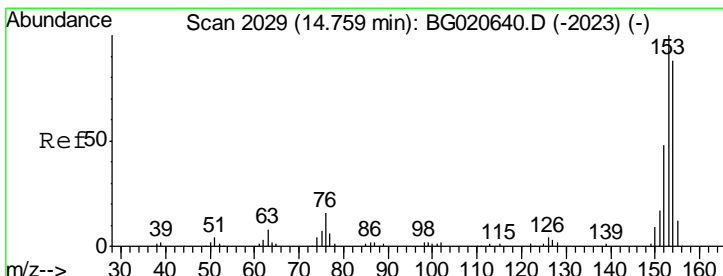
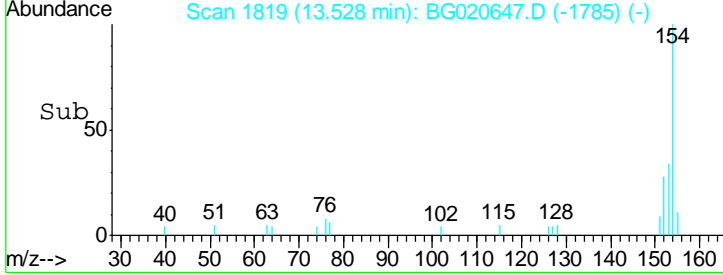
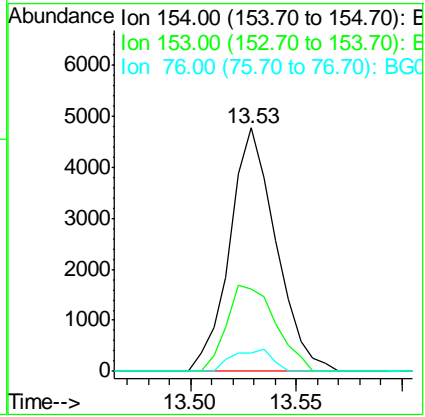
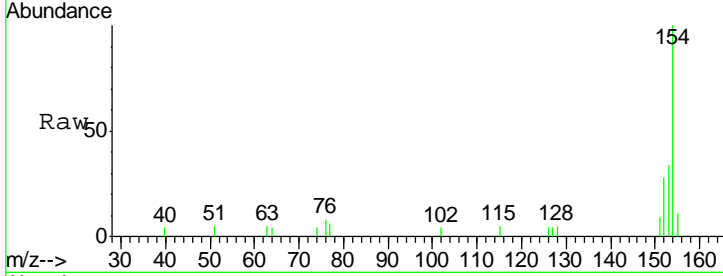


#41
 1,1'-Biphenyl
 Concen: 1.42 ng/ul
 RT: 13.53 min Scan# 1819
 Delta R.T. -0.00 min
 Lab File: BG020647.D
 Acq: 31 Dec 2015 18:34

Instrument :
 BNA_G
 ClientSampleID :
 D9N70DL

Tgt Ion:154 Resp: 7215

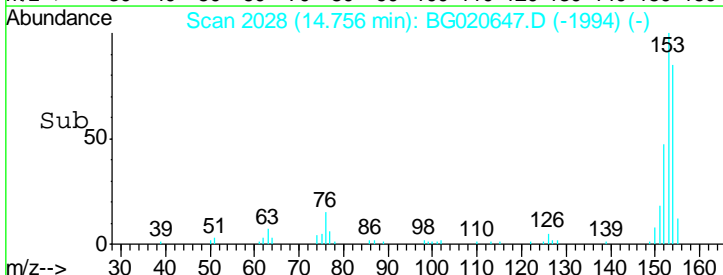
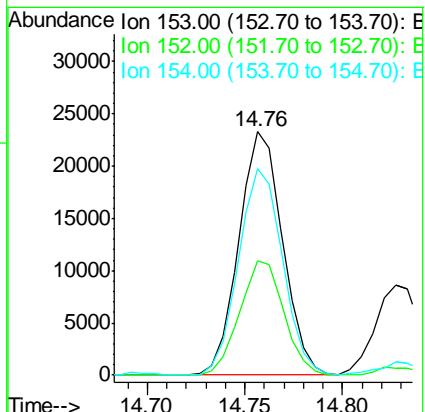
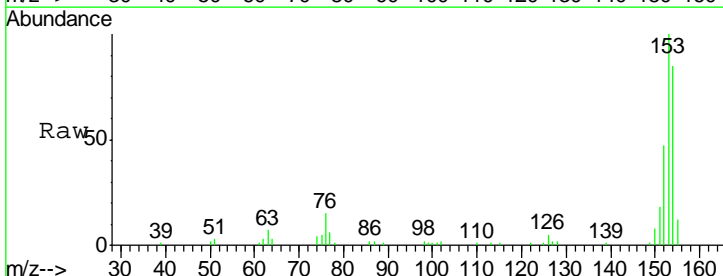
Ion	Ratio	Lower	Upper
154	100		
153	34.1	34.0	51.0
76	7.6	8.4	12.6#

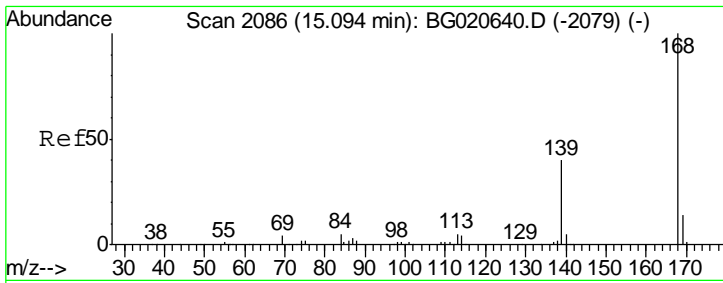


#50
 Acenaphthene
 Concen: 7.99 ng/ul
 RT: 14.76 min Scan# 2028
 Delta R.T. -0.00 min
 Lab File: BG020647.D
 Acq: 31 Dec 2015 18:34

Tgt Ion:153 Resp: 36180

Ion	Ratio	Lower	Upper
153	100		
152	46.7	37.9	56.9
154	85.1	69.8	104.6

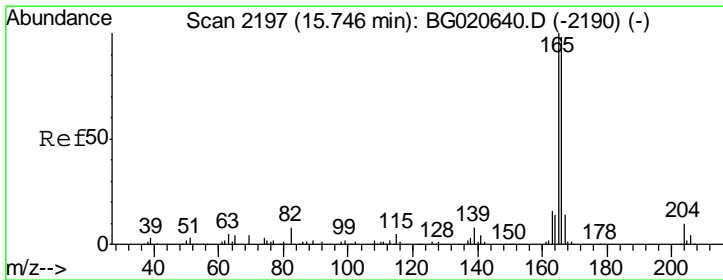
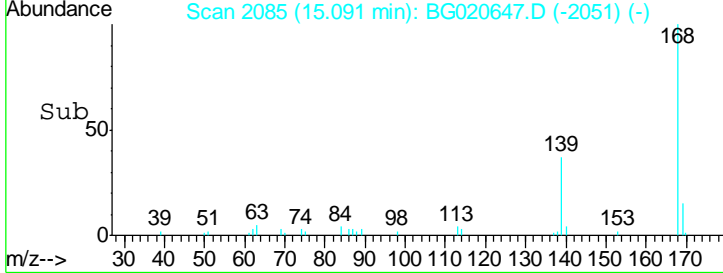
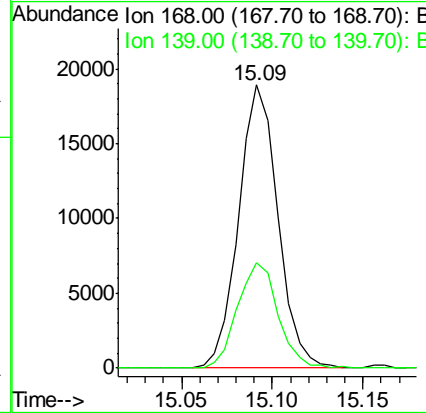
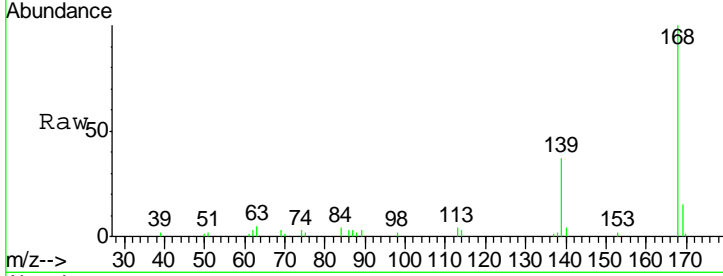




#54
 Dibenzofuran
 Concen: 4.16 ng/ul
 RT: 15.09 min Scan# 2085
 Delta R.T. -0.00 min
 Lab File: BG020647.D
 Acq: 31 Dec 2015 18:34

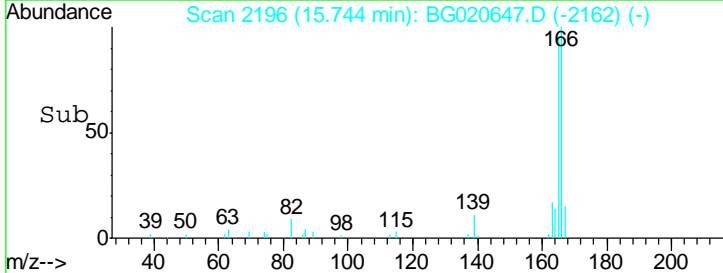
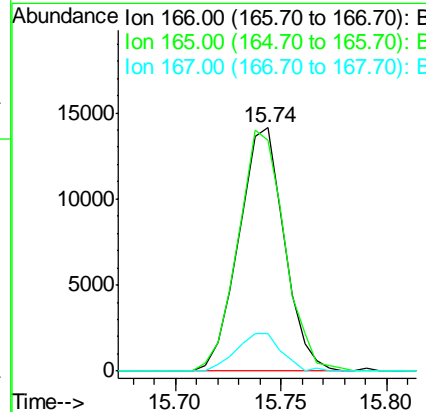
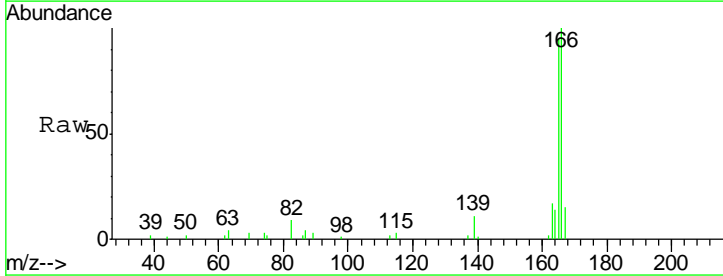
Instrument :
 BNA_G
 ClientSampleID :
 D9N70DL

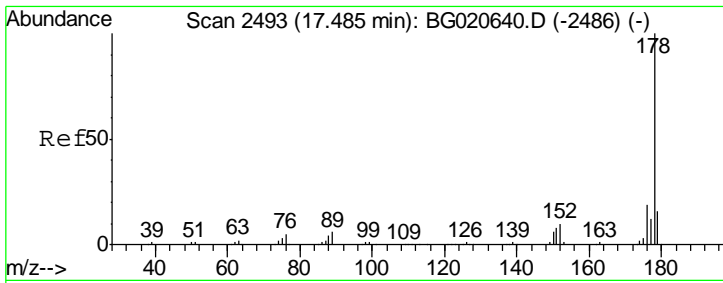
Tgt Ion	Resp	Lower	Upper
168	100		
139	37.3	31.0	46.4



#59
 Fluorene
 Concen: 3.83 ng/ul
 RT: 15.74 min Scan# 2196
 Delta R.T. -0.00 min
 Lab File: BG020647.D
 Acq: 31 Dec 2015 18:34

Tgt Ion	Resp	Lower	Upper
166	100		
165	94.8	78.4	117.6
167	15.3	11.1	16.7

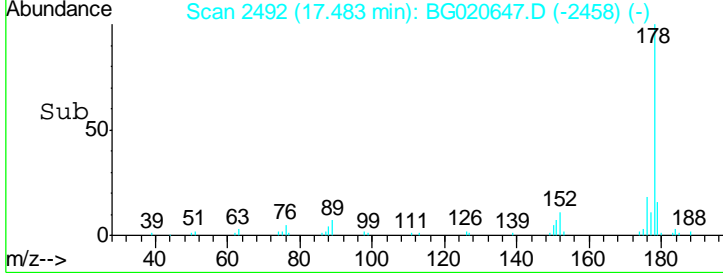
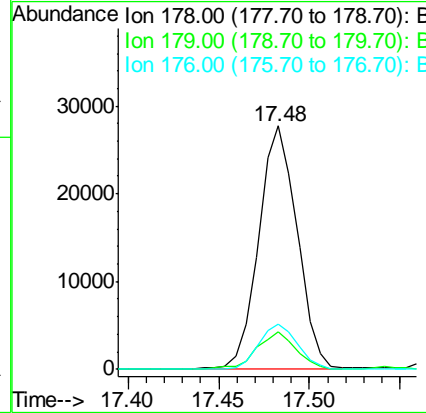
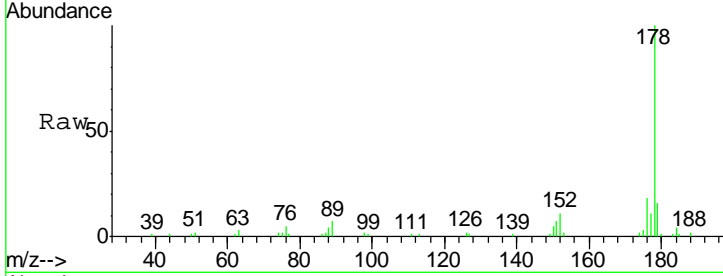




#70
 Phenanthrene
 Concen: 4.32 ng/ul
 RT: 17.48 min Scan# 2492
 Delta R.T. -0.00 min
 Lab File: BG020647.D
 Acq: 31 Dec 2015 18:34

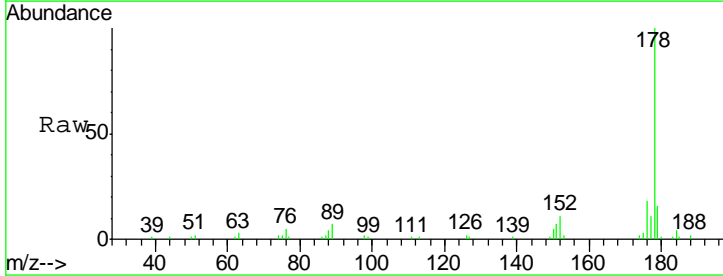
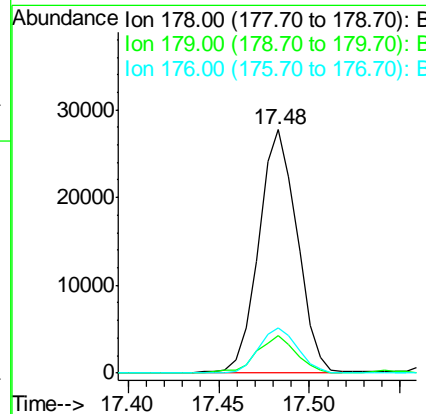
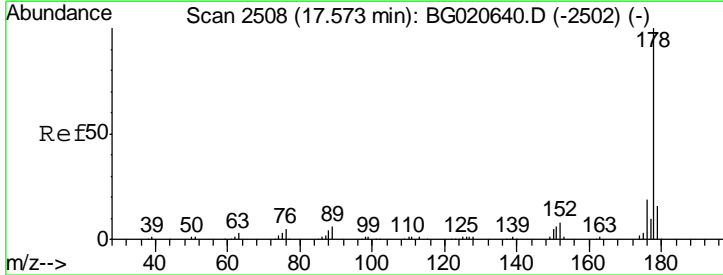
Instrument :
 BNA_G
 ClientSampled :
 D9N70DL

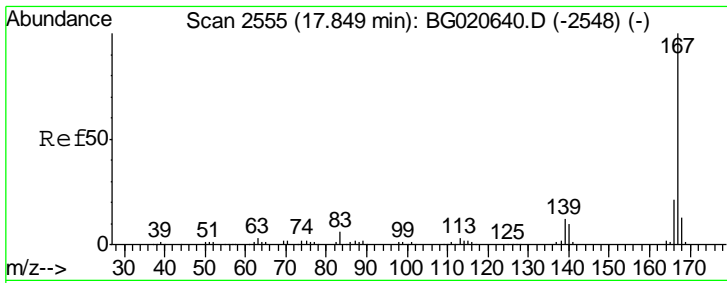
Tgt Ion	Resp	Lower	Upper
178	40937		
179	15.6	12.3	18.5
176	18.5	15.4	23.0



#72
 Anthracene
 Concen: 4.22 ng/ul
 RT: 17.48 min Scan# 2492
 Delta R.T. -0.09 min
 Lab File: BG020647.D
 Acq: 31 Dec 2015 18:34

Tgt Ion	Resp	Lower	Upper
178	40937		
179	15.6	13.4	20.2
176	18.5	15.4	23.0





#75
 Carbazole
 Concen: 5.46 ng/ul
 RT: 17.85 min Scan# 2554
 Delta R.T. -0.00 min
 Lab File: BG020647.D
 Acq: 31 Dec 2015 18:34

Instrument :
 BNA_G
 ClientSampleID :
 D9N70DL

Tgt Ion	Resp	Lower	Upper
167	44643		
166	21.3	17.0	25.4
139	13.9	9.1	13.7#

