

Data File : H:\VOL1\HPLC\HPLC L\130103\HL003988.D Vial: 4  
 Acq On : 03-Jan-2013, 17:08 Operator: HLM  
 Sample : 8330-5 Inst : G1314A  
 Misc : Multiplr: 1.00  
 IntFile : events.e  
 Quant Time: Jan 4 13:13 2013 Quant Results File: HL010313.RES

Instrument :  
 HPLC\_L  
 LabSampleId :  
 8330-5

Quant Method : H:\VOL1\HPLC\HPLC L\METHODS\HL010313.M (Chemstation Integrator)  
 Title : SW8330A/B Primary (Extend C18 3.5u 4.6x10mm)  
 Last Update : Fri Jan 04 13:12:34 2013  
 Response via : Initial Calibration  
 DataAcq Meth : 8330AGIP.M

Volume Inj. :  
 Signal Phase :  
 Signal Info :

Compound	R.T.	Response	Conc Units
----------	------	----------	------------

System Monitoring Compounds

1) S	4-Nitroaniline	1.37	7219370	1857.058 ug/L
Spiked Amount 300.000		Range 37 - 149	Recovery	= 619.02%#

Target Compounds

2) T	HMX	0.92	7960962	1185.706 ug/L
3) T	RDX	1.77	10824402	1995.817 ug/L
4) T	1,3,5-Trinitrobenzene	2.76	11355022	958.364 ug/L
5) T	Tetryl	6.32	16214461	1818.230 ug/L
6) T	2,4,6-Trinitrotoluene	6.68	10876435	928.193 ug/L
7) T	2-Amino-4,6-dinitrotoluene	7.17	10534260	933.966 ug/L
8) T	4-Amino-2,6-dinitrotoluene	7.51	7057196	964.050 ug/L
9) T	2,4-Dinitrotoluene	8.34	14830603	951.748 ug/L
10) T	2,6-Dinitrotoluene	8.73	8215146	948.926 ug/L
11) T	1,3-Dinitrobenzene	3.67	15977760	943.708 ug/L
12) T	Nitrobenzene	4.92	10339470	962.817 ug/L
13) T	2-Nitrotoluene	12.03	12622886	1905.930 ug/L
14) T	3-Nitrotoluene	14.09	13552081	1905.535 ug/L
15) T	4-Nitrotoluene	12.80	10645849	1940.183 ug/L
16) T	3,5-Dinitroaniline	4.02	30705330	1927.614 ug/L
18) T	PETN	19.30	44045282	4800.388 ug/L

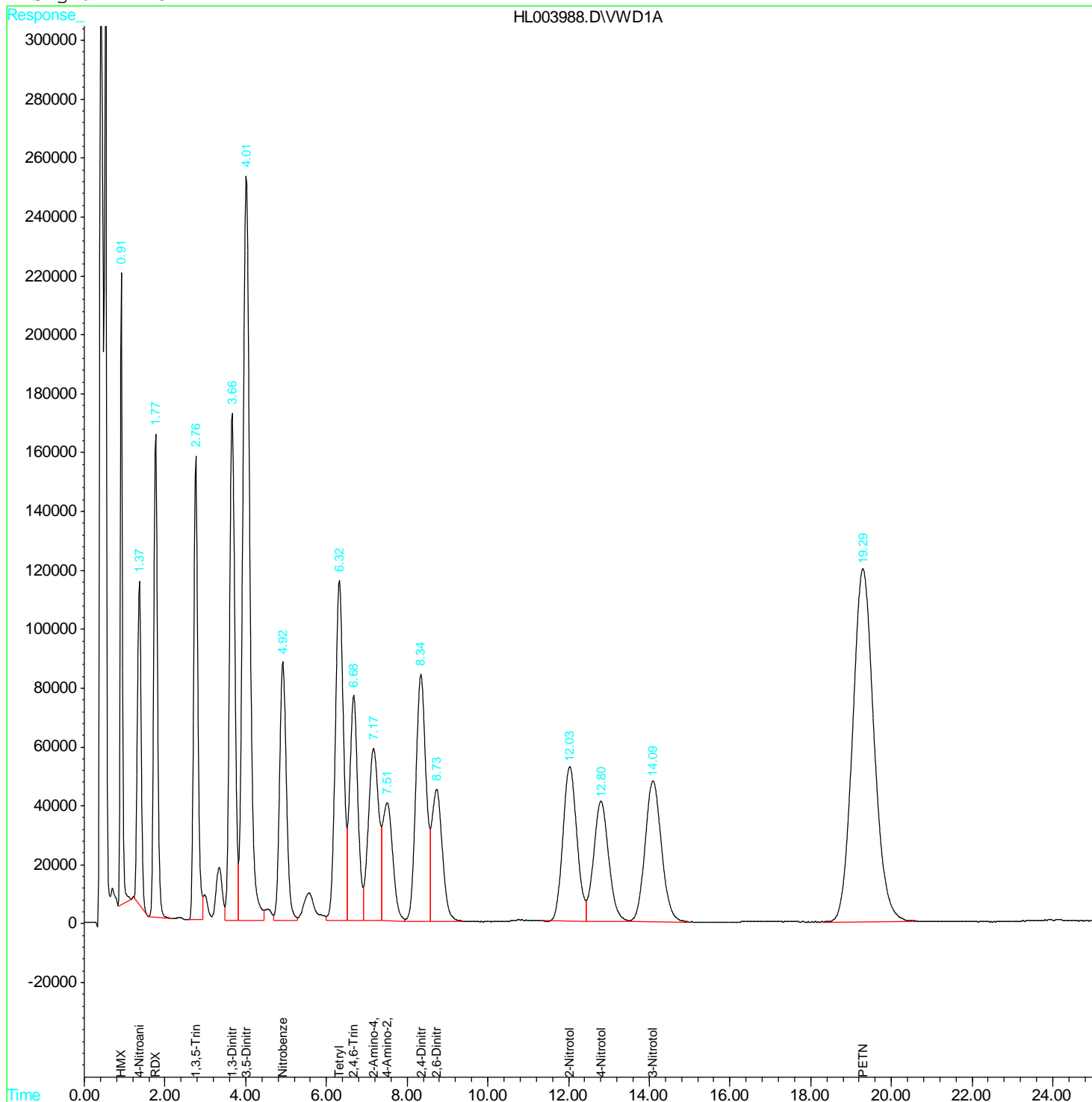
Data File : H:\VOL1\HPLC\HPLC L\130103\HL003988.D  
 Acc On : 03-Jan-2013, 17:08  
 Sample : 8330-5  
 Misc :  
 IntFile : events.e  
 Quant Time: Jan 4 13:13 2013

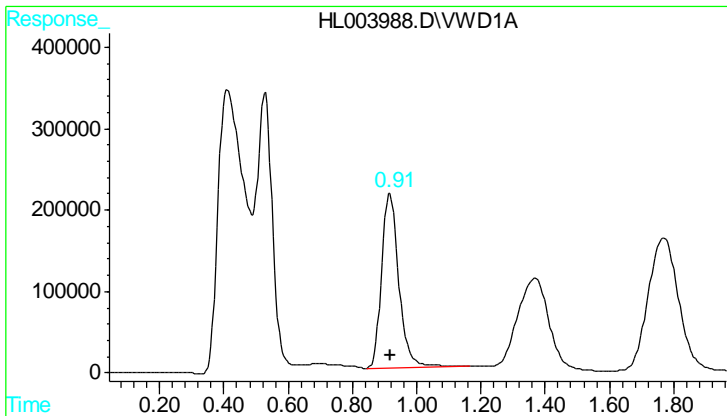
Vial: 4  
 Operator: HLM  
 Inst : G1314A  
 Multiplr: 1.00

Instrument :  
 HPLC\_L  
 LabSampleId :  
 8330-5

Quant Method : H:\VOL1\HPLC\HPLC L\METHODS\HL010313.M (Chemstation Integrator)  
 Title : SW8330A/B Primary (Extend C18 3.5u 4.6x10mm)  
 Last Update : Fri Jan 04 13:12:34 2013  
 Response via : Multiple Level Calibration  
 DataAcq Meth : 8330AGIP.M

Volume Inj. :  
 Signal Phase :  
 Signal Info :

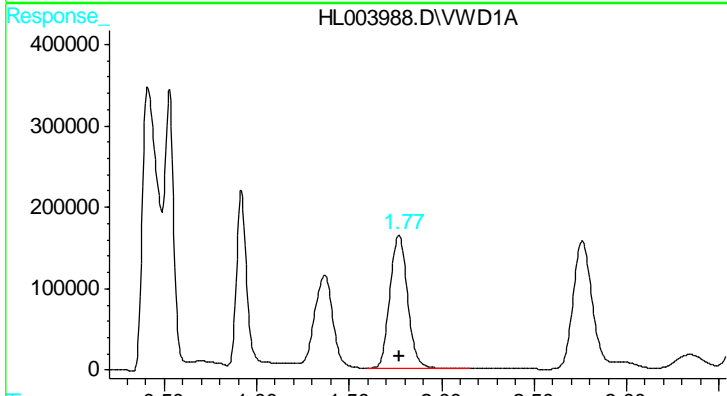




#2 HMX

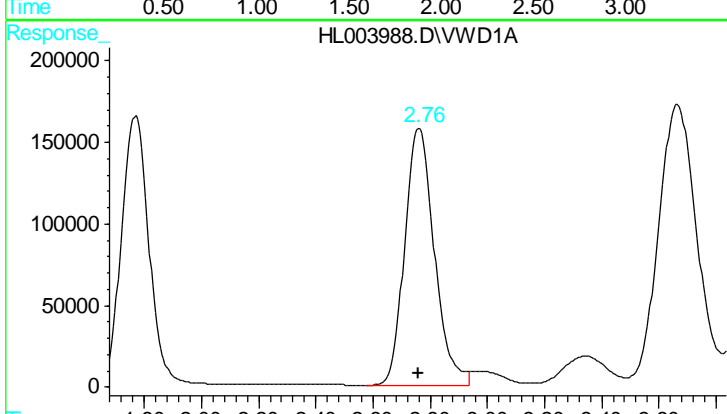
R.T.: 0.917 min  
 Delta R.T.: -0.002 min  
 Response: 7960962  
 Conc: 1185.71 ug/L

Instrument :  
 HPLC\_L  
 LabSampleId :  
 8330-5



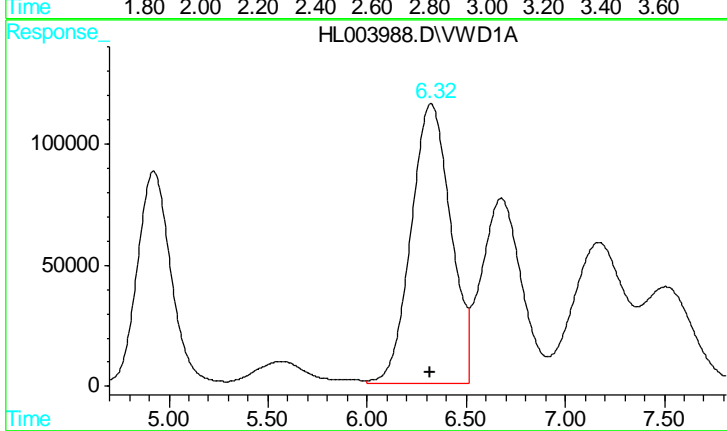
#3 RDX

R.T.: 1.770 min  
 Delta R.T.: -0.001 min  
 Response: 10824402  
 Conc: 1995.82 ug/L



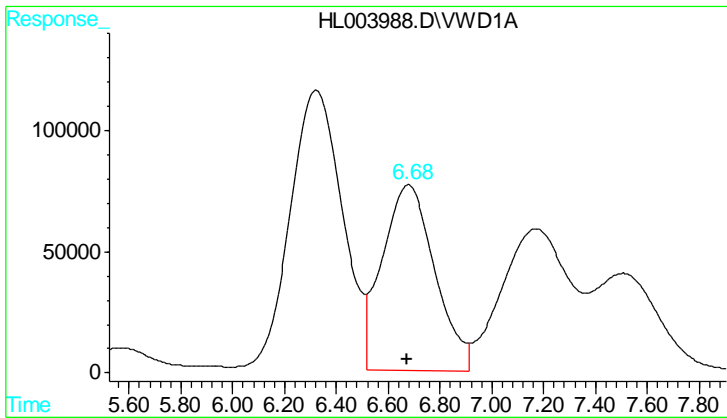
#4 1,3,5-Trinitrobenzene

R.T.: 2.761 min  
 Delta R.T.: 0.000 min  
 Response: 11355022  
 Conc: 958.36 ug/L



#5 Tetryl

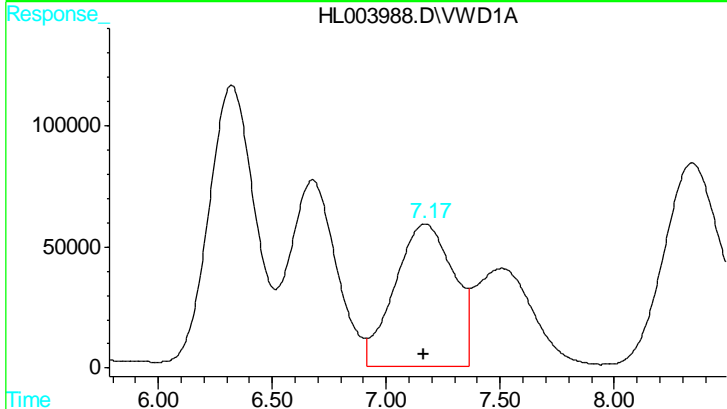
R.T.: 6.322 min  
 Delta R.T.: 0.005 min  
 Response: 16214461  
 Conc: 1818.23 ug/L



#6 2,4,6-Trinitrotoluene

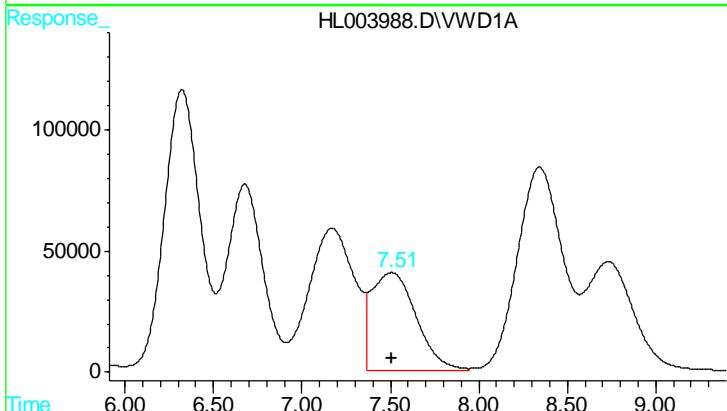
R.T.: 6.677 min  
 Delta R.T.: 0.005 min  
 Response: 10876435  
 Conc: 928.19 ug/L

Instrument :  
 HPLC\_L  
 LabSampleId :  
 8330-5



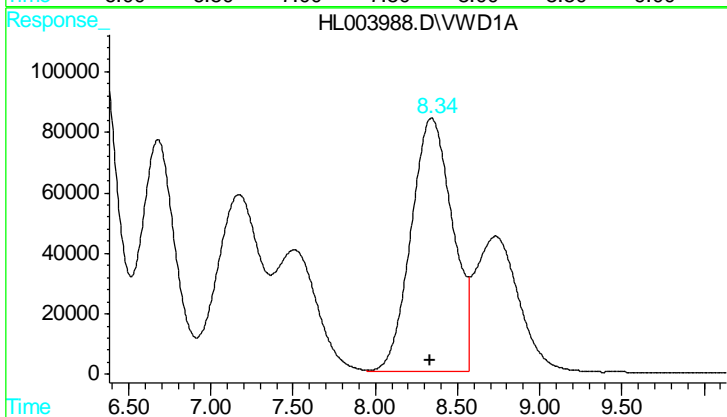
#7 2-Amino-4,6-dinitrotoluene

R.T.: 7.170 min  
 Delta R.T.: 0.004 min  
 Response: 10534260  
 Conc: 933.97 ug/L



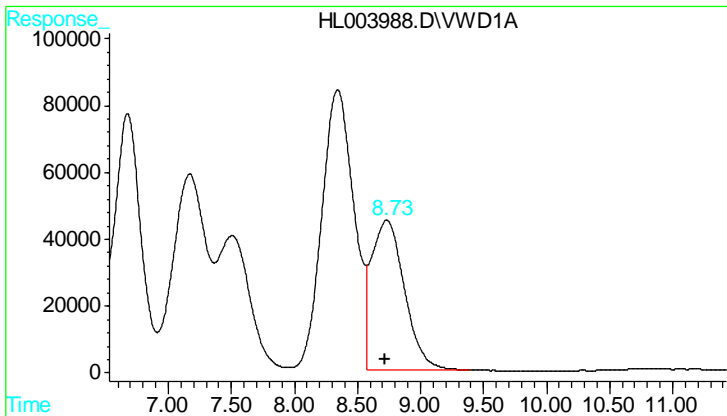
#8 4-Amino-2,6-dinitrotoluene

R.T.: 7.506 min  
 Delta R.T.: 0.002 min  
 Response: 7057196  
 Conc: 964.05 ug/L



#9 2,4-Dinitrotoluene

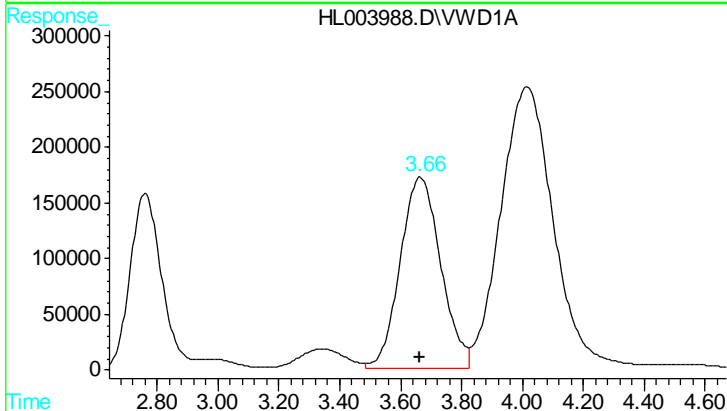
R.T.: 8.342 min  
 Delta R.T.: 0.005 min  
 Response: 14830603  
 Conc: 951.75 ug/L



#10 2,6-Dinitrotoluene

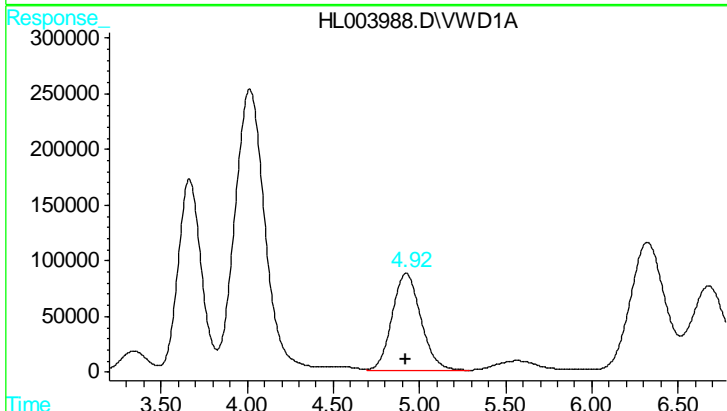
R.T.: 8.732 min  
 Delta R.T.: 0.006 min  
 Response: 8215146  
 Conc: 948.93 ug/L

Instrument :  
 HPLC\_L  
 LabSampleId :  
 8330-5



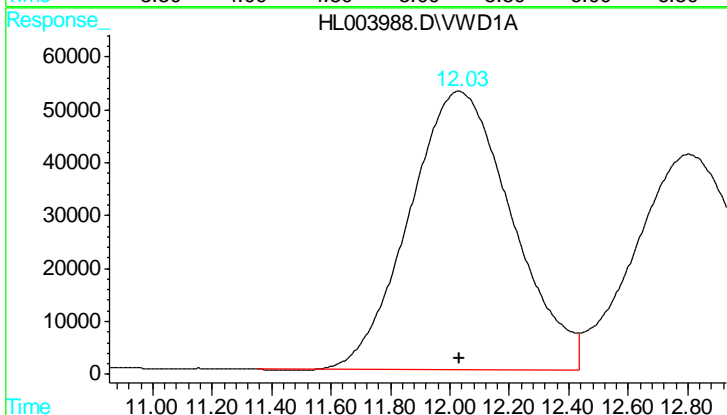
#11 1,3-Dinitrobenzene

R.T.: 3.665 min  
 Delta R.T.: 0.000 min  
 Response: 15977760  
 Conc: 943.71 ug/L



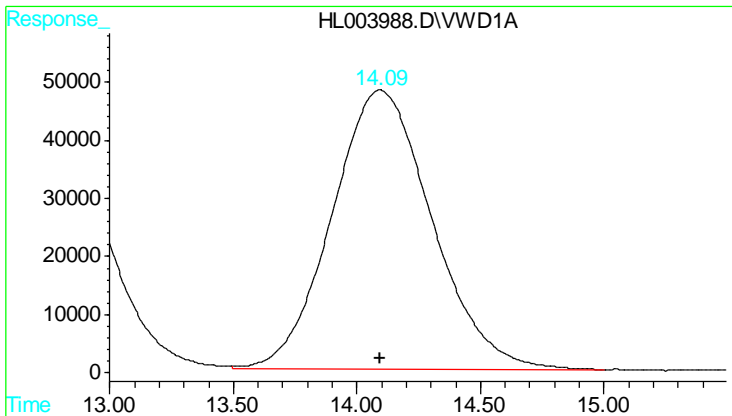
#12 Nitrobenzene

R.T.: 4.922 min  
 Delta R.T.: 0.001 min  
 Response: 10339470  
 Conc: 962.82 ug/L



#13 2-Nitrotoluene

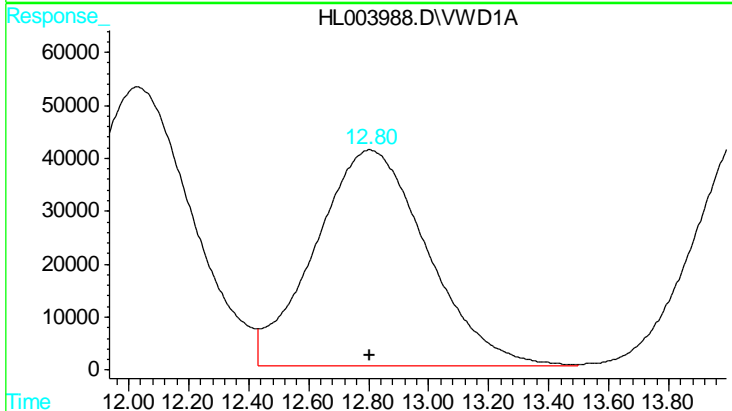
R.T.: 12.031 min  
 Delta R.T.: 0.000 min  
 Response: 12622886  
 Conc: 1905.93 ug/L



#14 3-Nitrotoluene

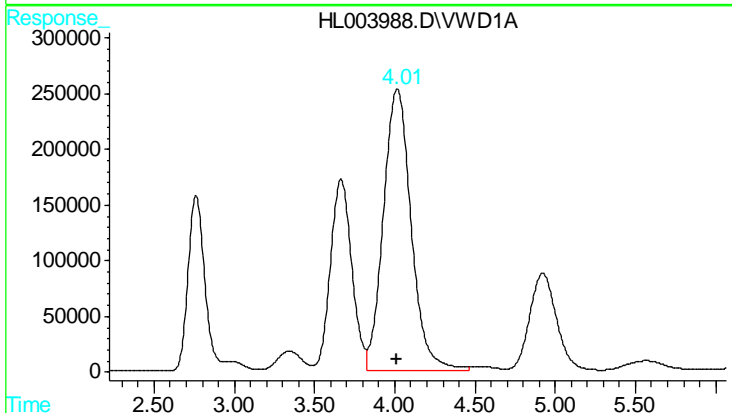
R.T.: 14.094 min  
 Delta R.T.: 0.000 min  
 Response: 13552081  
 Conc: 1905.53 ug/L

Instrument :  
 HPLC\_L  
 LabSampleId :  
 8330-5



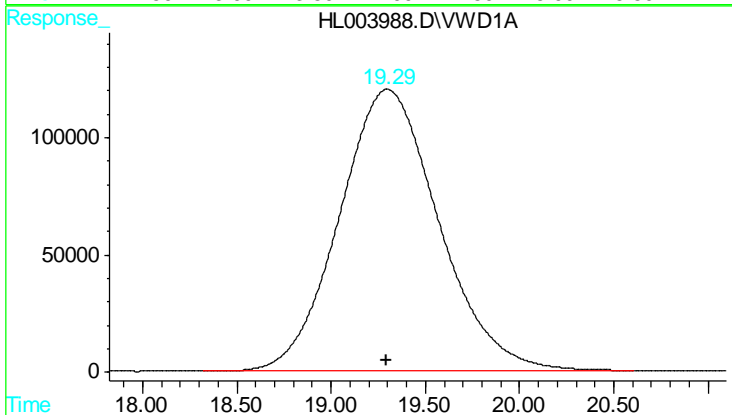
#15 4-Nitrotoluene

R.T.: 12.804 min  
 Delta R.T.: -0.001 min  
 Response: 10645849  
 Conc: 1940.18 ug/L



#16 3,5-Dinitroaniline

R.T.: 4.016 min  
 Delta R.T.: 0.000 min  
 Response: 30705330  
 Conc: 1927.61 ug/L



#18 PETN

R.T.: 19.297 min  
 Delta R.T.: 0.000 min  
 Response: 44045282  
 Conc: 4800.39 ug/L