

Data Path : Z:\HPCHEM1\HPLC\_L\Data\HL060712\  
Data File : HL003184.D  
Signal(s) : VWD1A.CH  
Acq On : 07-Jun-2012, 21:53  
Operator : HLM  
Sample : PB63611BSD2  
Misc :  
ALS Vial : 25 Sample Multiplier: 1

Integration File: events.e  
Quant Time: Jun 14 07:30:56 2012  
Quant Method : Z:\HPCHEM1\HPLC\_L\methods\HL060712.M  
Quant Title : SW8330A/B Primary (Extend C18 3.5u 4.6x10mm)  
QLast Update : Wed Jun 13 15:12:30 2012  
Response via : Initial Calibration  
Integrator: ChemStation

Volume Inj. :  
Signal Phase :  
Signal Info :

Compound	R.T.	Response	Conc Units
-----			
System Monitoring Compounds			
Target Compounds			
-----			

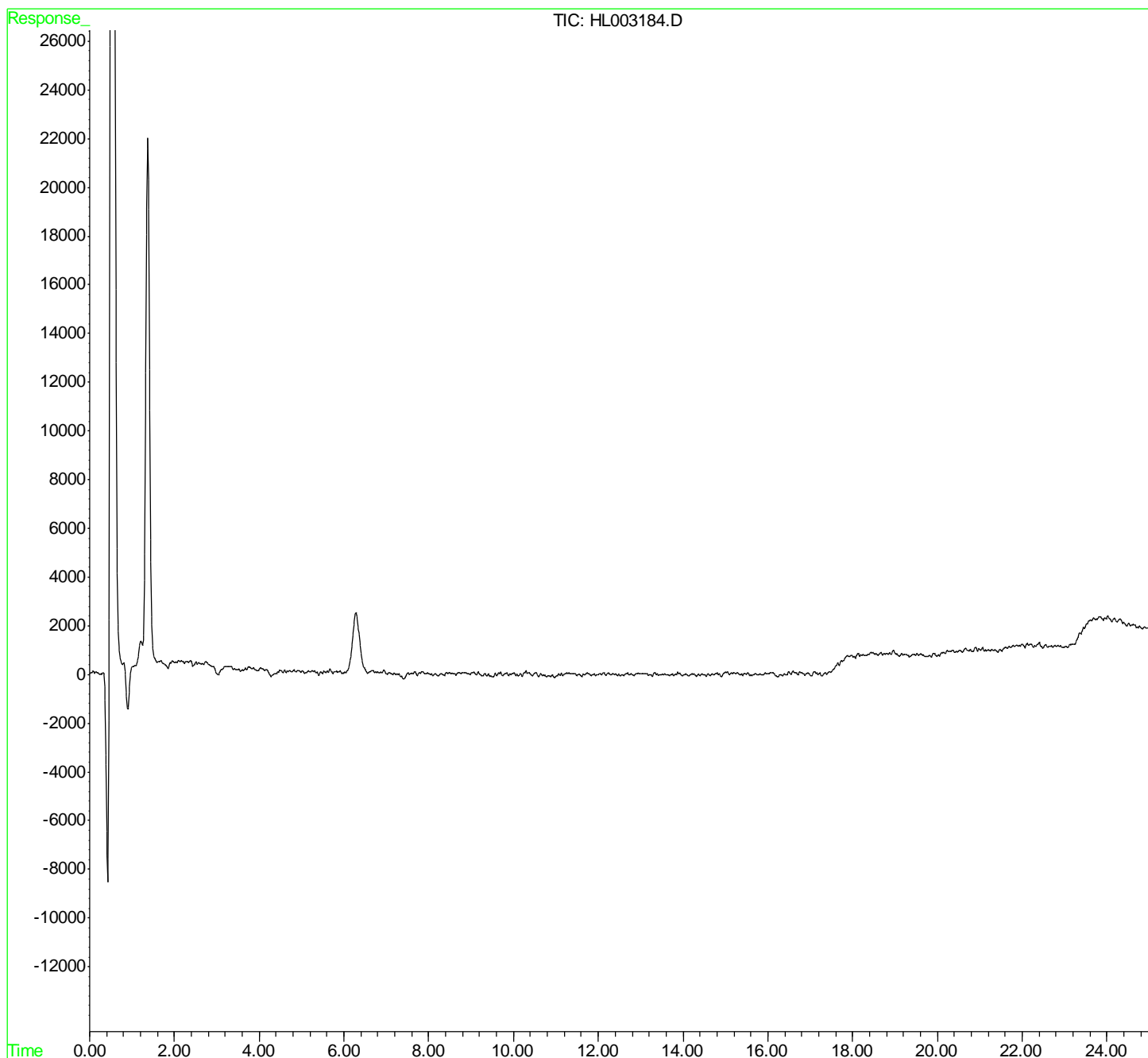
(f)=RT Delta > 1/2 Window

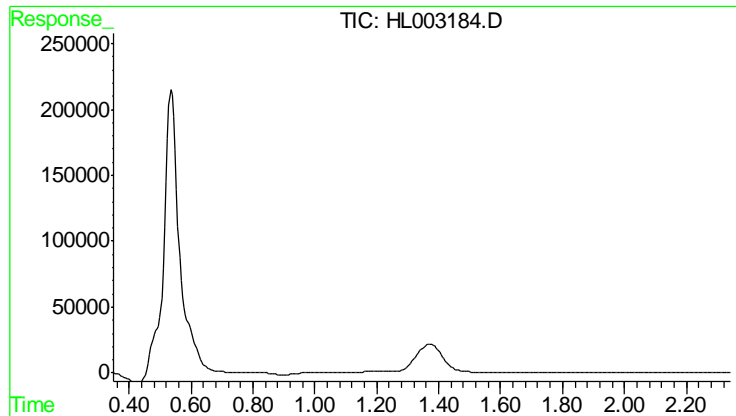
(m)=manual int.

Data Path : Z:\HPCHEM1\HPLC\_L\Data\HL060712\  
Data File : HL003184.D  
Signal(s) : VWD1A.CH  
Acq On : 07-Jun-2012, 21:53  
Operator : HLM  
Sample : PB63611BSD2  
Misc :  
ALS Vial : 25 Sample Multiplier: 1

Integration File: events.e  
Quant Time: Jun 14 07:30:56 2012  
Quant Method : Z:\HPCHEM1\HPLC\_L\methods\HL060712.M  
Quant Title : SW8330A/B Primary (Extend C18 3.5u 4.6x10mm)  
QLast Update : Wed Jun 13 15:12:30 2012  
Response via : Initial Calibration  
Integrator: ChemStation

Volume Inj. :  
Signal Phase :  
Signal Info :





#1 4-Nitroaniline

R.T.: 0.000 min  
Exp R.T.: 1.346 min  
Response: 0  
Conc: N.D.