

Data Path : S:\HPCHEM1\HPLC_L\Data\HL123112\
Data File : HL003922.D
Signal(s) : VWD1A.CH
Acq On : 01-Jan-2013, 22:20
Operator : HLM
Sample : I.BLK
Misc :
ALS Vial : 1 Sample Multiplier: 1

Instrument :
HPLC_L
LabSampleId :
I.BLK

Integration File: events.e
Quant Time: Jan 03 04:11:58 2013
Quant Method : H:\VOL1\HPLC\HPLC_L\METHODS\HL123112.M
Quant Title : SW8330A/B Primary (Extend C18 3.5u 4.6x10mm)
QLast Update : Wed Jan 02 11:22:54 2013
Response via : Initial Calibration
Integrator: ChemStation

Volume Inj. :
Signal Phase :
Signal Info :

Compound	R.T.	Response	Conc Units

System Monitoring Compounds			
Target Compounds			

(f)=RT Delta > 1/2 Window

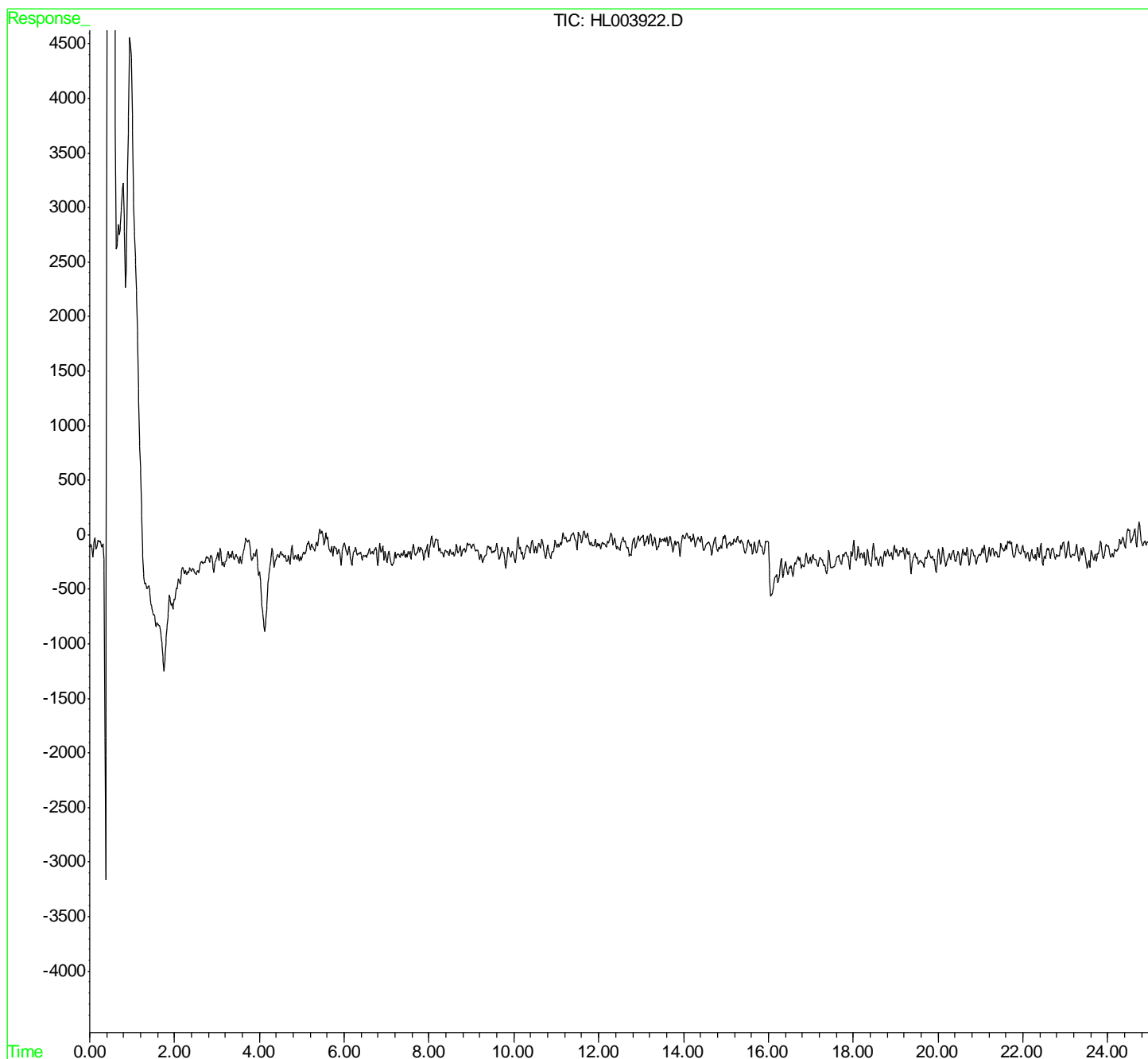
(m)=manual int.

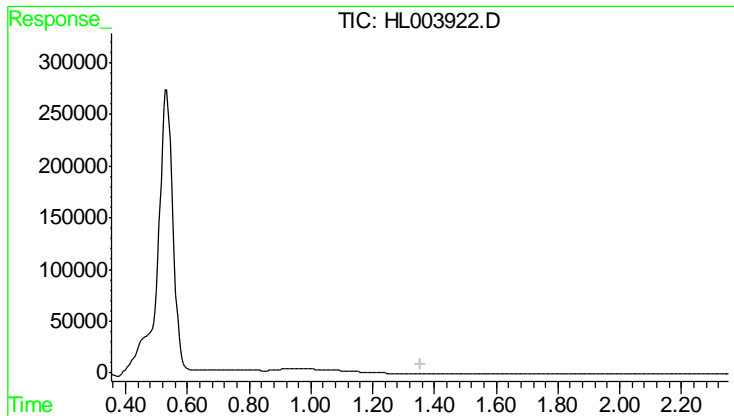
Data Path : S:\HPCHEM1\HPLC_L\Data\HL123112\
Data File : HL003922.D
Signal(s) : VWD1A.CH
Acq On : 01-Jan-2013, 22:20
Operator : HLM
Sample : I.BLK
Misc :
ALS Vial : 1 Sample Multiplier: 1

Instrument :
HPLC_L
LabSampleId :
I.BLK

Integration File: events.e
Quant Time: Jan 03 04:11:58 2013
Quant Method : H:\VOL1\HPLC\HPLC_L\METHODS\HL123112.M
Quant Title : SW8330A/B Primary (Extend C18 3.5u 4.6x10mm)
QLast Update : Wed Jan 02 11:22:54 2013
Response via : Initial Calibration
Integrator: ChemStation

Volume Inj. :
Signal Phase :
Signal Info :





#1 4-Nitroaniline

R.T.: 0.000 min
Exp R.T.: 1.353 min
Response: 0
Conc: N.D.

Instrument :
HPLC_L
LabSampleId :
I.BLK