

Data Path : S:\HPCHEM1\HPLC_L\Data\HL052813\
 Data File : HL005304.D
 Signal(s) : VWD1A.CH
 Acq On : 28-May-2013, 22:05
 Operator : QM
 Sample : LOD-W-15PPB
 Misc :
 ALS Vial : 10 Sample Multiplier: 1

Instrument :
 HPLC_L
 ClientSampleId :
 LOD-W-15PPB

Manual Integrations
 APPROVED

mohammad
 5/31/2013 5:18:21 PM

Integration File: autoint1.e
 Quant Time: Jun 03 07:38:29 2013
 Quant Method : Z:\HPCHEM1\HPLC_L\METHODS\HL052213.M
 Quant Title :
 QLast Update : Thu May 23 10:06:03 2013
 Response via : Initial Calibration
 Integrator: ChemStation

Volume Inj. : 50 ul
 Signal Phase : ZORBAX Extend-C18
 Signal Info : 4.6 X 100mm 3.5-Micron 80A

Compound	R.T.	Response	Conc Units
System Monitoring Compounds			
1) S 4-Nitroaniline	1.368	1272778	320.585 ug/L
Target Compounds			
2) T HMX	0.921	98777	21.777 ug/L
3) T RDX	1.781	80865	15.262 ug/L m
4) T 1,3,5-Trinitrobenzene	2.779	186418	17.232 ug/L
5) T 1,3-Dinitrobenzene	3.707	258923	16.772 ng/mlm
6) T 3,5-Dinitroaniline	4.103	259964	19.215 ug/L m
7) T Nitrobenzene	4.998	160507	15.669 ug/L m
8) T Tetryl	6.754	61552	9.146 ug/L m
9) T 2,4,6-Trinitrotoluene	6.912	195333	17.350 ug/L m
10) T 2-Amino-4,6-dinitroto...	7.455	126499	11.806 ug/L m
11) T 4-Amino-2,6-dinitroto...	7.925	79128	14.190 ug/L m
12) T 2,4-Dinitrotoluene	8.705	239799	15.843 ug/L m
13) T 2,6-Dinitrotoluene	9.156	140760	17.309 ug/L m
14) T 2-Nitrotoluene	12.576	114461	16.137 ug/L m
15) T 4-Nitrotoluene	13.346	111936	20.011 ug/L m
16) T 3-Nitrotoluene	14.601	70419	10.622 ug/L m

(f)=RT Delta > 1/2 Window

(m)=manual int.

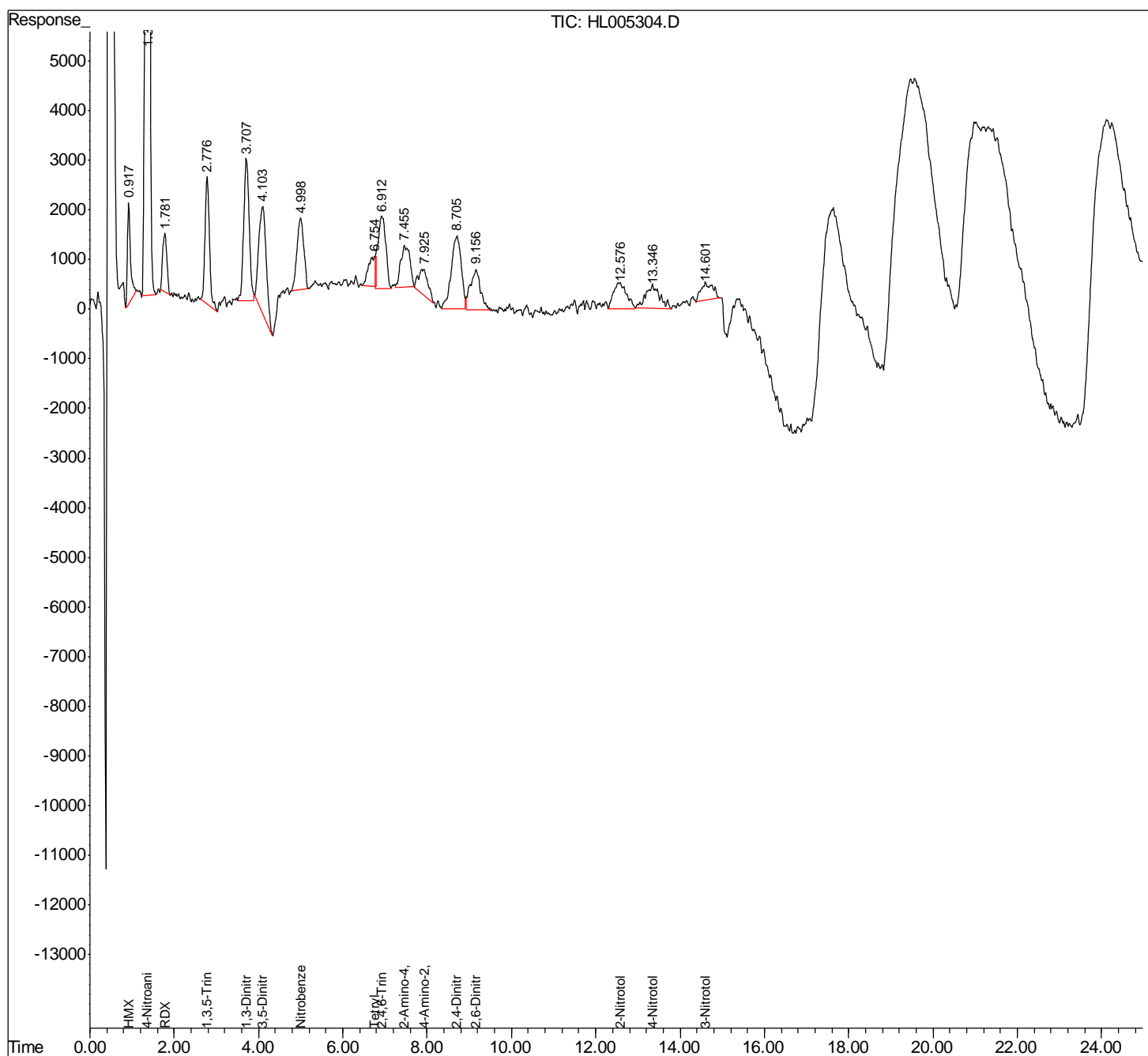
Data Path : S:\HPCHEM1\HPLC_L\Data\HL052813\
 Data File : HL005304.D
 Signal(s) : VWD1A.CH
 Acq On : 28-May-2013, 22:05
 Operator : QM
 Sample : LOD-W-15PPB
 Misc :
 ALS Vial : 10 Sample Multiplier: 1

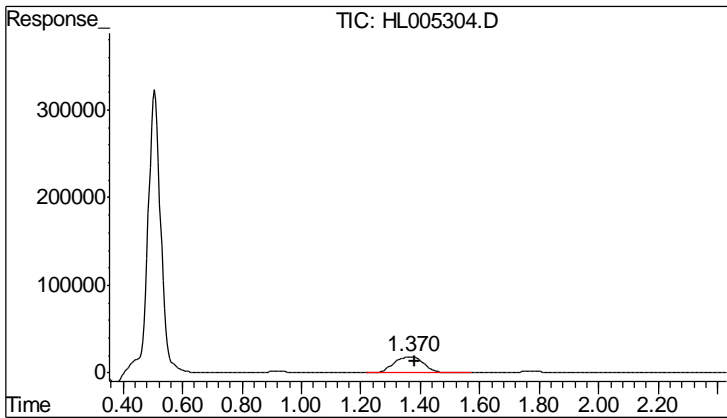
Instrument :
 HPLC_L
 Client Sampled :
 LOD-W-15PPB

Manual Integrations
 APPROVED
 mohammad
 5/31/2013 5:18:21 PM

Integration File: autoint1.e
 Quant Time: Jun 03 07:38:29 2013
 Quant Method : Z:\HPCHEM1\HPLC_L\METHODS\HL052213.M
 Quant Title :
 QLast Update : Thu May 23 10:06:03 2013
 Response via : Initial Calibration
 Integrator: ChemStation

Volume Inj. : 50 ul
 Signal Phase : ZORBAX Extend-C18
 Signal Info : 4.6 X 100mm 3.5-Micron 80A





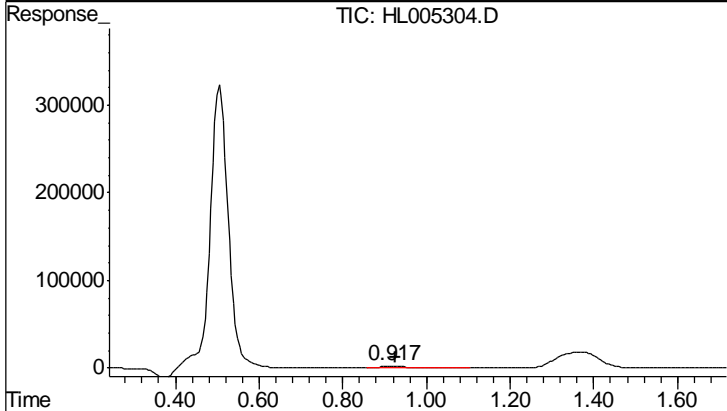
#1 4-Nitroaniline

R.T.: 1.368 min
 Delta R.T.: -0.014 min
 Response: 1272778
 Conc: 320.59 ug/L

Instrument :
 HPLC_L
 ClientSampled :
 LOD-W-15PPB

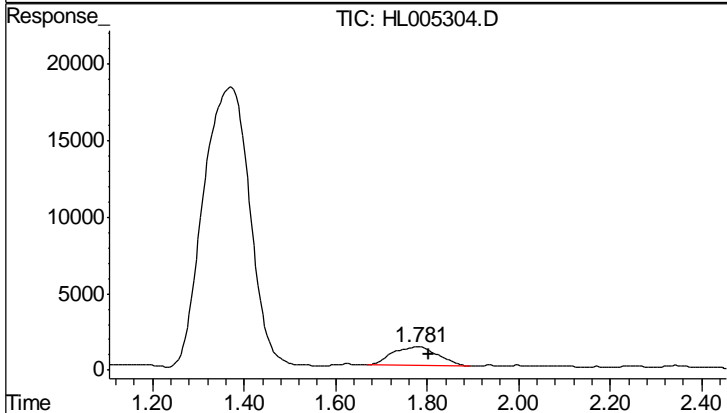
Manual Integrations
 APPROVED

mohammad
 5/31/2013 5:18:21 PM



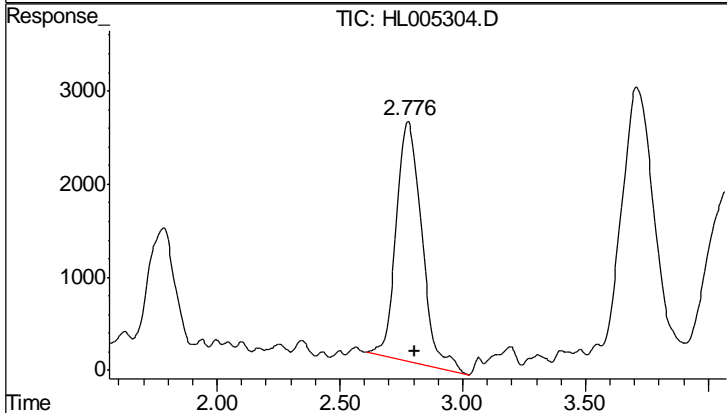
#2 HMX

R.T.: 0.921 min
 Delta R.T.: -0.006 min
 Response: 98777
 Conc: 21.78 ug/L



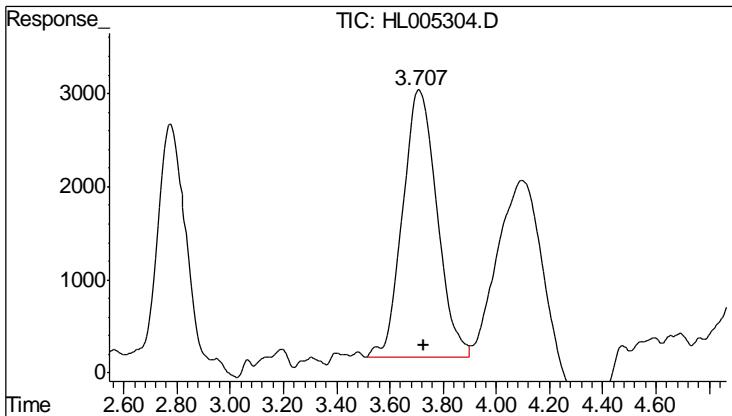
#3 RDX

R.T.: 1.781 min
 Delta R.T.: -0.022 min
 Response: 80865
 Conc: 15.26 ug/L m



#4 1,3,5-Trinitrobenzene

R.T.: 2.779 min
 Delta R.T.: -0.027 min
 Response: 186418
 Conc: 17.23 ug/L

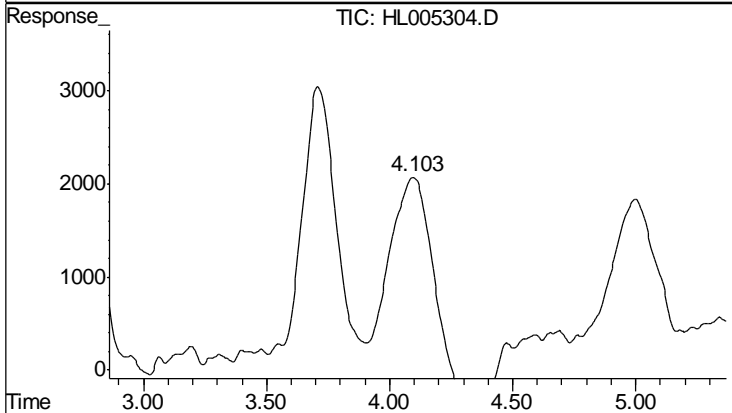


#5 1,3-Dinitrobenzene

R.T.: 3.707 min
 Delta R.T.: -0.020 min
 Response: 258923
 Conc: 16.77 ng/ml

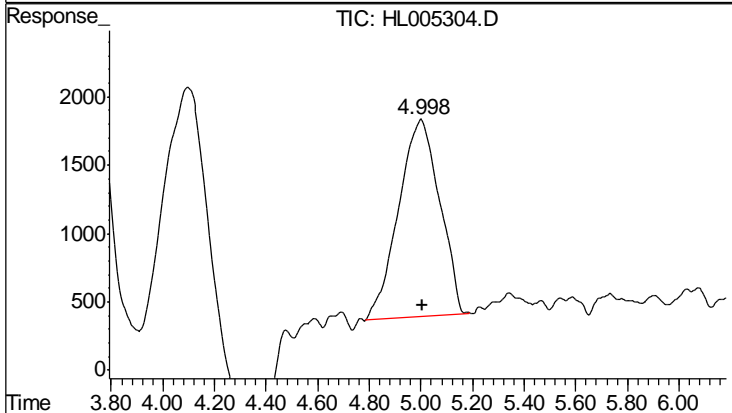
Instrument :
 HPLC_L
 ClientSampled :
 LOD-W-15PPB

Manual Integrations
 APPROVED
 mohammad
 5/31/2013 5:18:21 PM



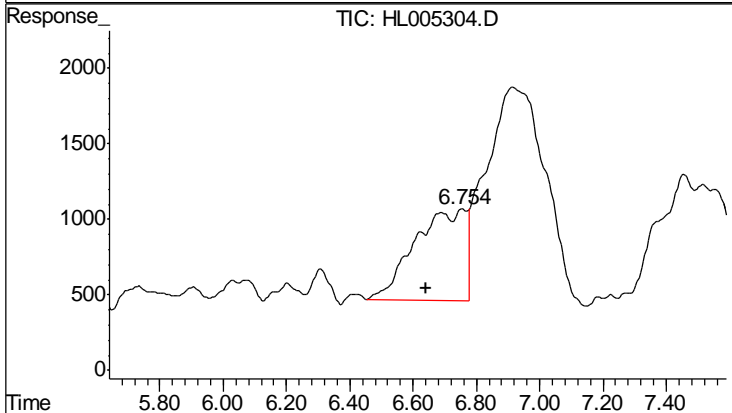
#6 3,5-Dinitroaniline

R.T.: 4.103 min
 Delta R.T.: 0.001 min
 Response: 259964
 Conc: 19.21 ug/L m



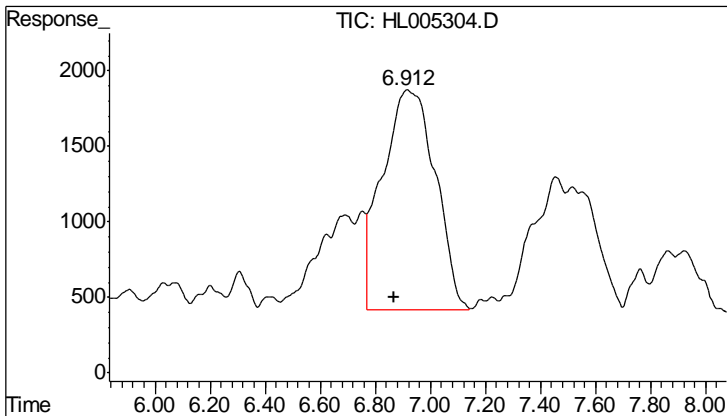
#7 Nitrobenzene

R.T.: 4.998 min
 Delta R.T.: -0.005 min
 Response: 160507
 Conc: 15.67 ug/L m



#8 Tetryl

R.T.: 6.754 min
 Delta R.T.: 0.113 min
 Response: 61552
 Conc: 9.15 ug/L m

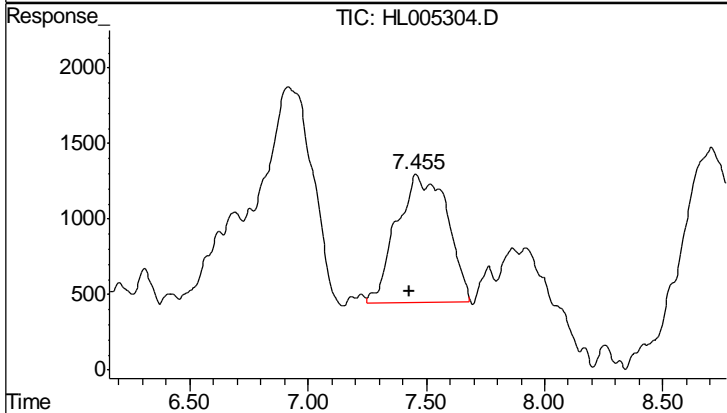


#9 2,4,6-Trinitrotoluene

R.T.: 6.912 min
 Delta R.T.: 0.043 min
 Response: 195333
 Conc: 17.35 ug/L m

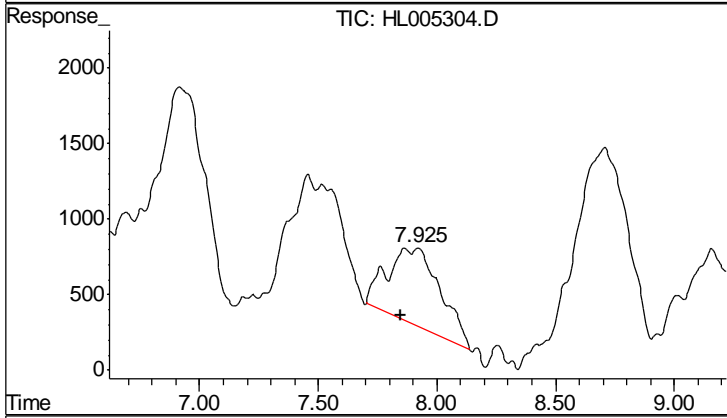
Instrument :
 HPLC_L
 ClientSampled :
 LOD-W-15PPB

Manual Integrations
 APPROVED
 mohammad
 5/31/2013 5:18:21 PM



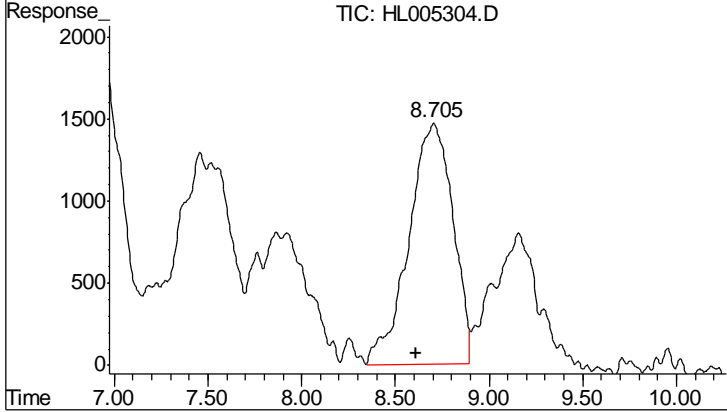
#10 2-Amino-4,6-dinitrotoluene

R.T.: 7.455 min
 Delta R.T.: 0.024 min
 Response: 126499
 Conc: 11.81 ug/L m



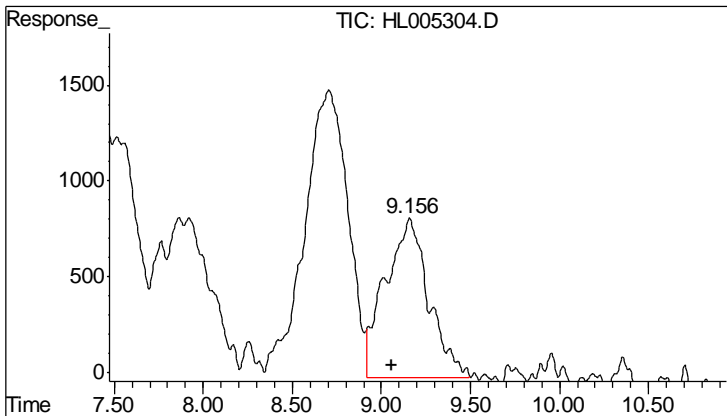
#11 4-Amino-2,6-dinitrotoluene

R.T.: 7.925 min
 Delta R.T.: 0.080 min
 Response: 79128
 Conc: 14.19 ug/L m



#12 2,4-Dinitrotoluene

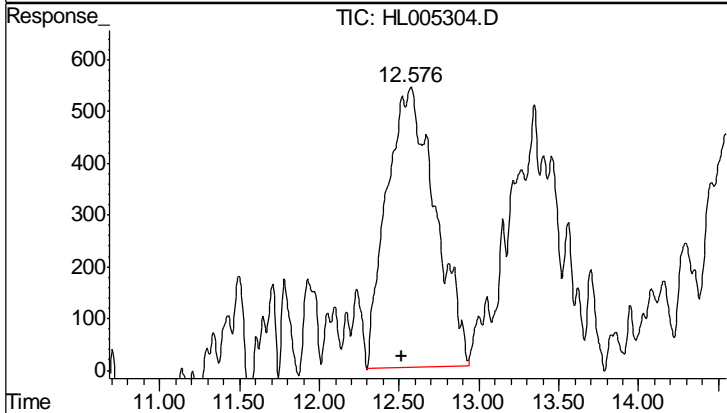
R.T.: 8.705 min
 Delta R.T.: 0.094 min
 Response: 239799
 Conc: 15.84 ug/L m



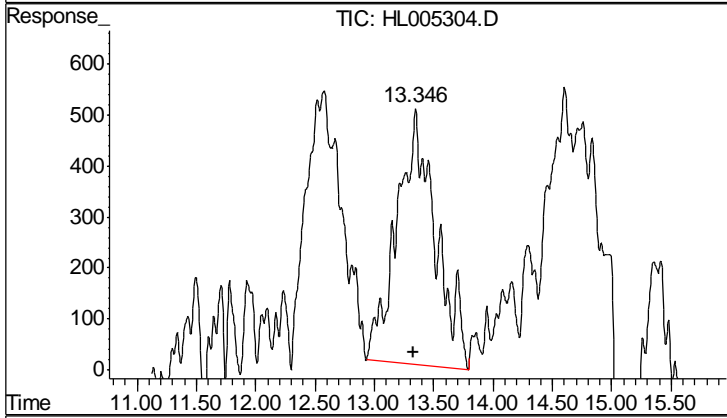
#13 2,6-Dinitrotoluene
 R.T.: 9.156 min
 Delta R.T.: 0.100 min
 Response: 140760
 Conc: 17.31 ug/L m

Instrument :
 HPLC_L
 ClientSampled :
 LOD-W-15PPB

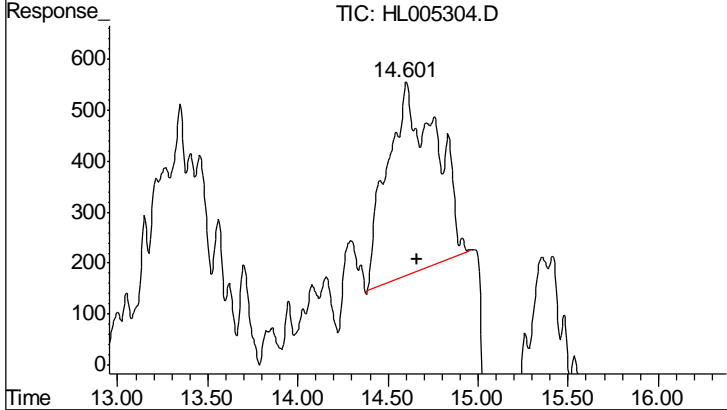
Manual Integrations
 APPROVED
 mohammad
 5/31/2013 5:18:21 PM



#14 2-Nitrotoluene
 R.T.: 12.576 min
 Delta R.T.: 0.057 min
 Response: 114461
 Conc: 16.14 ug/L m



#15 4-Nitrotoluene
 R.T.: 13.346 min
 Delta R.T.: 0.020 min
 Response: 111936
 Conc: 20.01 ug/L m



#16 3-Nitrotoluene
 R.T.: 14.601 min
 Delta R.T.: -0.061 min
 Response: 70419
 Conc: 10.62 ug/L m