

Data Path : Z:\HPCHEM1\HPLC_L\HL102214\
Data File : HL005699.D
Signal(s) : Signal #1: VWD1A.CH Signal #2: VWD1A.CH
Acq On : 23-Oct-2014, 13:14
Operator : TP
Sample : F4312-11
Misc :
ALS Vial : 40 Sample Multiplier: 1

Instrument :
HPLC_L
ClientSampleId :
YS19-SB25-1014

Integration File signal 1: AUTOINT1.E
Integration File signal 2: autoint2.e
Quant Time: Mar 10 16:53:33 2015
Quant Method : Z:\HPCHEM1\HPLC_L\METHODS\HL102214.M
Quant Title :
QLast Update : Mon Mar 09 16:43:57 2015
Response via : Initial Calibration
Integrator: ChemStation

Volume Inj. : 50 uL
Signal #1 Phase : ZORBAX Extend-C18 Signal #2 Phase:
Signal #1 Info : 4.6 X 100mm 3.5-M Signal #2 Info :

Compound	R.T.	Response	Conc Units

System Monitoring Compounds			
Target Compounds			
9) T 2,4,6-Trinitrotoluene	10.450	353551	24.212 ug/L

(f)=RT Delta > 1/2 Window

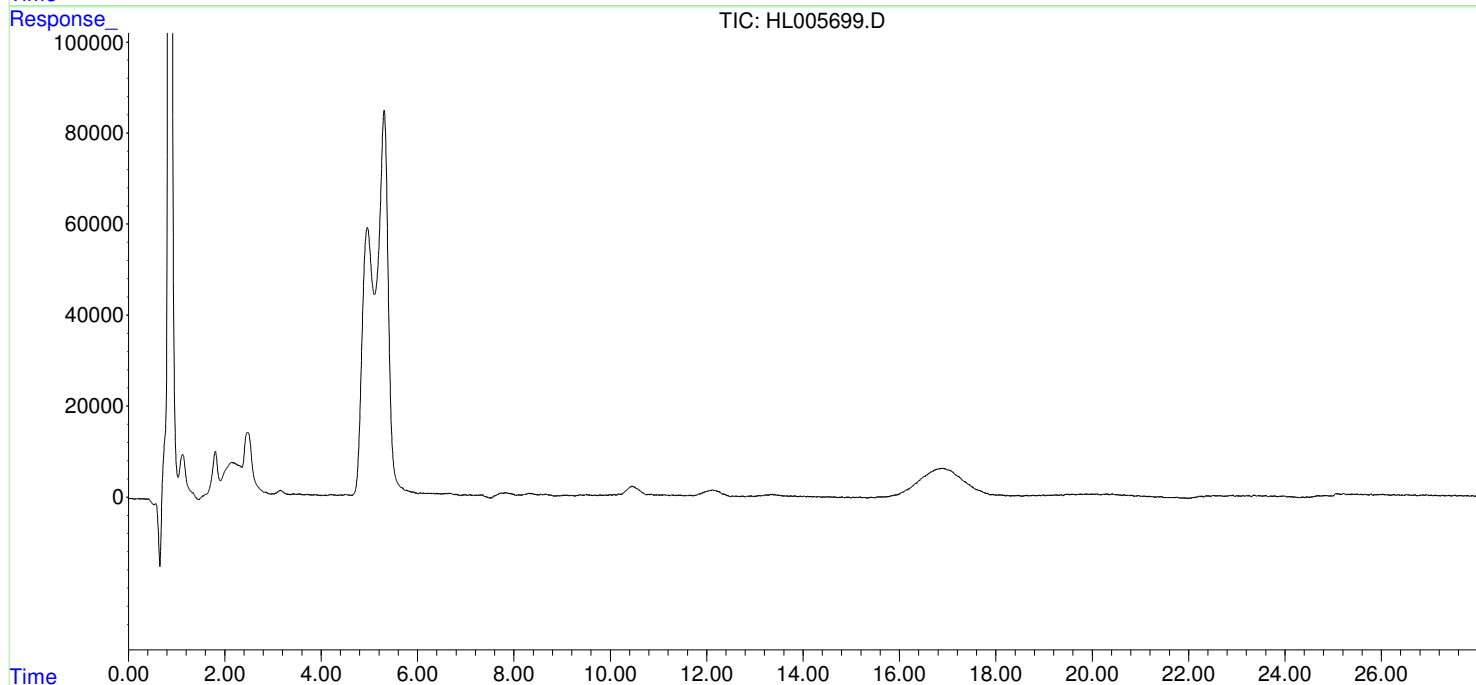
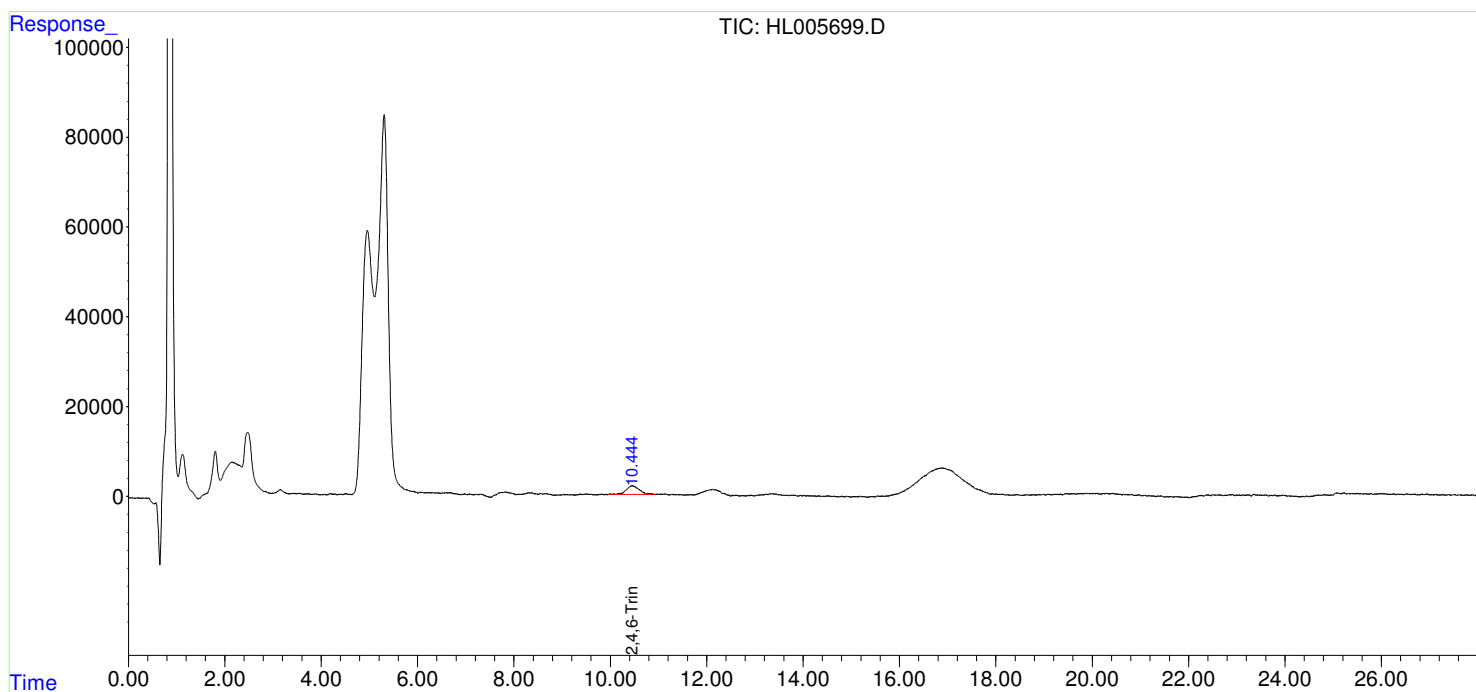
(m)=manual int.

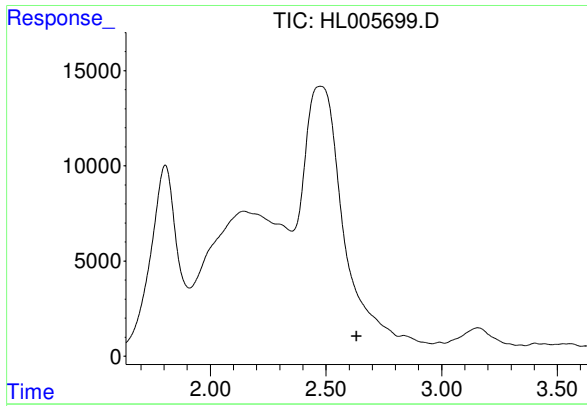
Data Path : Z:\HPCHEM1\HPLC_L\HL102214\
 Data File : HL005699.D
 Signal(s) : Signal #1: VWD1A.CH Signal #2: VWD1A.CH
 Acq On : 23-Oct-2014, 13:14
 Operator : TP
 Sample : F4312-11
 Misc :
 ALS Vial : 40 Sample Multiplier: 1

Instrument :
 HPLC_L
 ClientSampleId :
 YS19-SB25-1014

Integration File signal 1: AUTOINT1.E
 Integration File signal 2: autoint2.e
 Quant Time: Mar 10 16:53:33 2015
 Quant Method : Z:\HPCHEM1\HPLC_L\METHODS\HL102214.M
 Quant Title :
 QLast Update : Mon Mar 09 16:43:57 2015
 Response via : Initial Calibration
 Integrator: ChemStation

Volume Inj. : 50 ul
 Signal #1 Phase : ZORBAX Extend-C18 Signal #2 Phase:
 Signal #1 Info : 4.6 X 100mm 3.5-M Signal #2 Info :

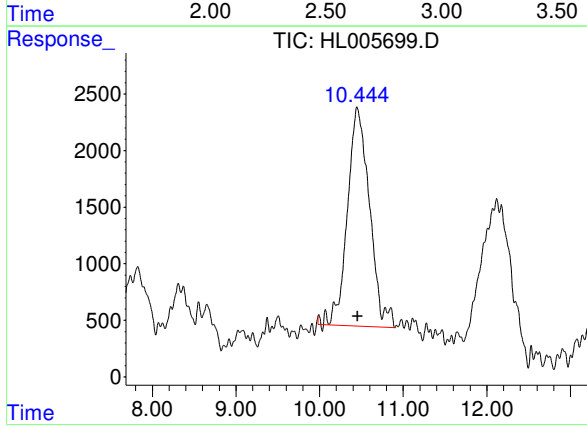




#1 4-Nitroaniline

R.T.: 0.000 min
Exp R.T. : 2.632 min
Response: 0
Conc: N.D.

Instrument :
HPLC_L
ClientSampled :
YS19-SB25-1014



#9 2,4,6-Trinitrotoluene

R.T.: 10.450 min
Delta R.T.: -0.006 min
Response: 353551
Conc: 24.21 ug/L