

Data Path : Z:\HPCHEM1\HPLC_N\Data\HN120315\
 Data File : HN007609.D
 Signal(s) : vwd1A.ch
 Acq On : 03-Dec-2015, 16:13
 Operator : UM/MA
 Sample : SSTDIC0100
 Misc :
 ALS Vial : 6 Sample Multiplier: 1

Instrument :
 HPLC_N
 ClientSampled :

Integration File: autoint1.e
 Quant Time: Dec 03 17:24:00 2015
 Quant Method : Z:\HPCHEM1\HPLC_N\Methods\HN120315.M
 Quant Title :
 QLast Update : Thu Dec 03 16:32:25 2015
 Response via : Initial Calibration
 Integrator: ChemStation

Volume Inj. : 50 ul
 Signal Phase : ZORBAX Extend-C18
 Signal Info : 4.6 X 100mm 3.5-Micron 80A

Compound	R.T.	Response	Conc Units

System Monitoring Compounds			
1) S 4-Nitroaniline	1.318	357903	96.861 ug/L
Target Compounds			
2) T HMX	0.890	412171	93.846 ug/L
3) T RDX	1.701	476981	85.699 ug/L
4) T 1,3,5-Trinitrobenzene	2.625	1065829	91.983 ug/L
5) T 1,3-Dinitrobenzene	3.492	1525859	89.772 ng/ml
6) T 3,5-Dinitroaniline	3.873	1140882	92.226 ug/L
7) T Nitrobenzene	4.666	934229	92.509 ug/L
8) T Tetryl	6.164	688985	93.740 ug/L
9) T 2,4,6-Trinitrotoluene	6.402	1038794	89.140 ug/L
10) T 2-Amino-4,6-dinitroto...	6.963	1005723	89.696 ug/L
11) T 4-Amino-2,6-dinitroto...	7.332	702507	94.746 ug/L
12) T 2,4-Dinitrotoluene	8.018	1482375	96.063 ug/L
13) T 2,6-Dinitrotoluene	8.420	794360	87.586 ug/L
14) T 2-Nitrotoluene	11.525	634893	94.952 ug/L
15) T 4-Nitrotoluene	12.226	473945	87.805 ug/L
16) T 3-Nitrotoluene	13.524	695047	101.558 ug/L
17) T PETN	18.480	896645	94.948 ug/L

(f)=RT Delta > 1/2 Window

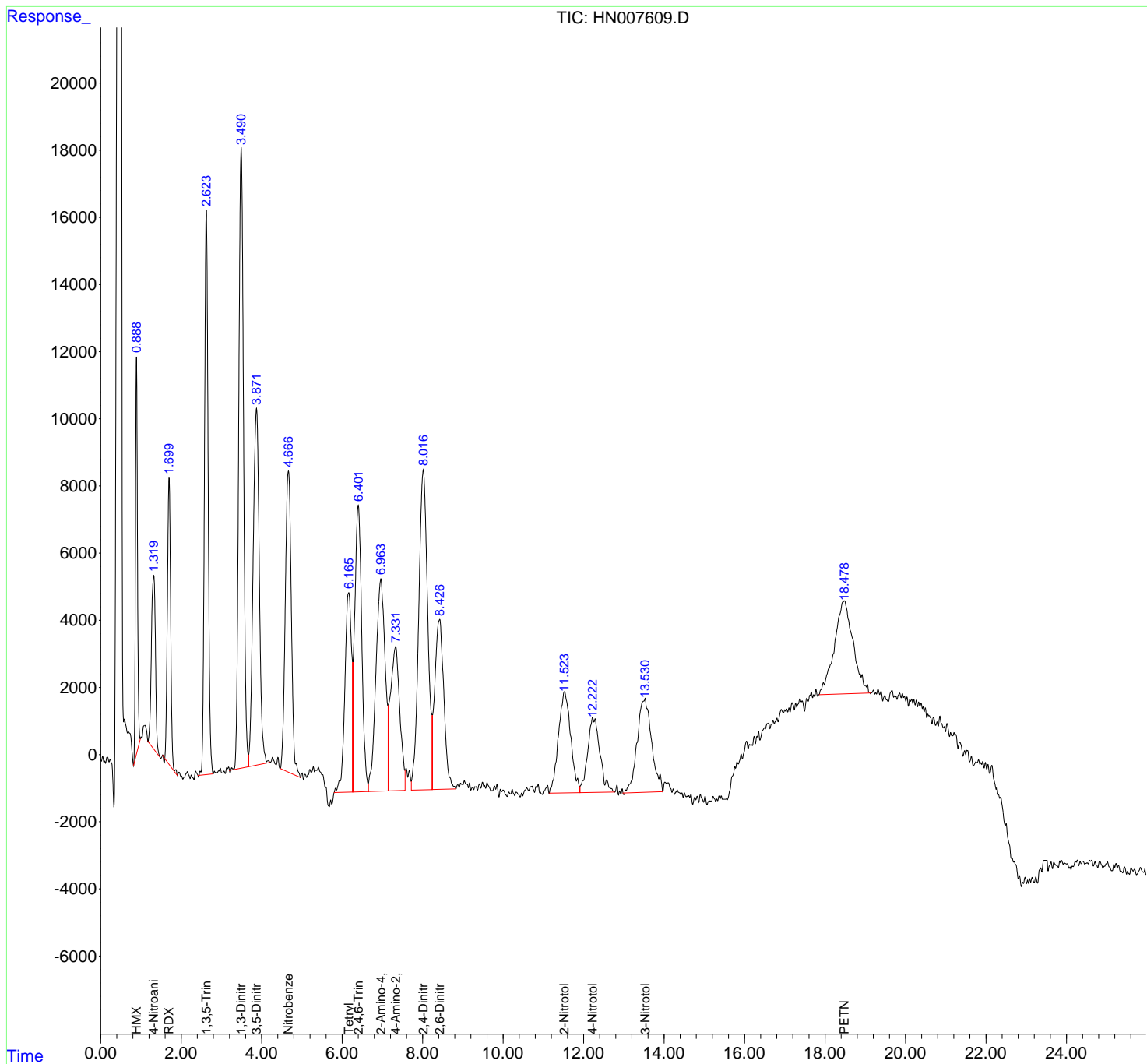
(m)=manual int.

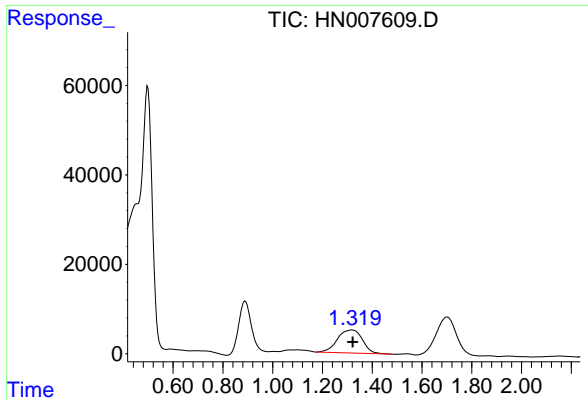
Data Path : Z:\HPCHEM1\HPLC_N\Data\HN120315\
 Data File : HN007609.D
 Signal(s) : vwd1A.ch
 Acq On : 03-Dec-2015, 16:13
 Operator : UM/MA
 Sample : SSTDICC0100
 Misc :
 ALS Vial : 6 Sample Multiplier: 1

Instrument :
 HPLC_N
 ClientSampled :

Integration File: autoint1.e
 Quant Time: Dec 03 17:24:00 2015
 Quant Method : Z:\HPCHEM1\HPLC_N\Methods\HN120315.M
 Quant Title :
 QLast Update : Thu Dec 03 16:32:25 2015
 Response via : Initial Calibration
 Integrator: ChemStation

Volume Inj. : 50 ul
 Signal Phase : ZORBAX Extend-C18
 Signal Info : 4.6 X 100mm 3.5-Micron 80A

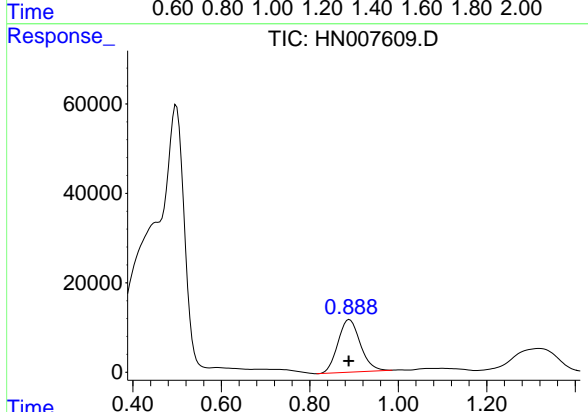




#1 4-Nitroaniline

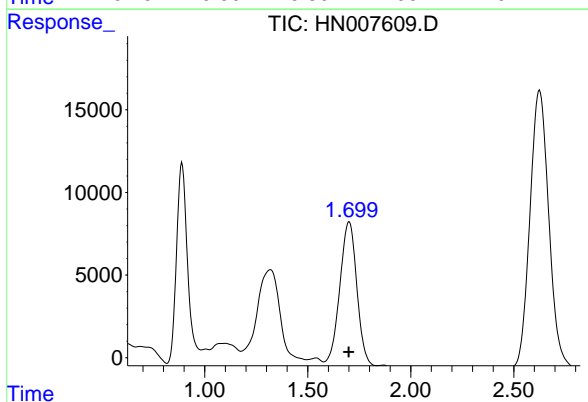
R.T.: 1.318 min
 Delta R.T.: -0.004 min
 Response: 357903
 Conc: 96.86 ug/L

Instrument :
 HPLC_N
 ClientSampled :



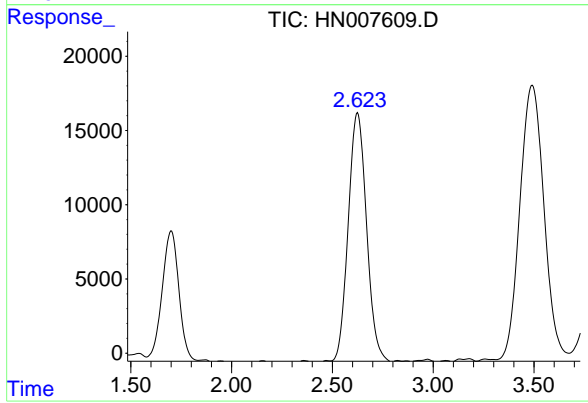
#2 HMX

R.T.: 0.890 min
 Delta R.T.: 0.002 min
 Response: 412171
 Conc: 93.85 ug/L



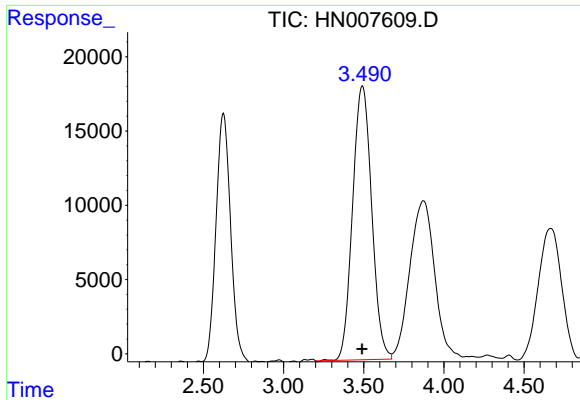
#3 RDX

R.T.: 1.701 min
 Delta R.T.: 0.002 min
 Response: 476981
 Conc: 85.70 ug/L



#4 1,3,5-Trinitrobenzene

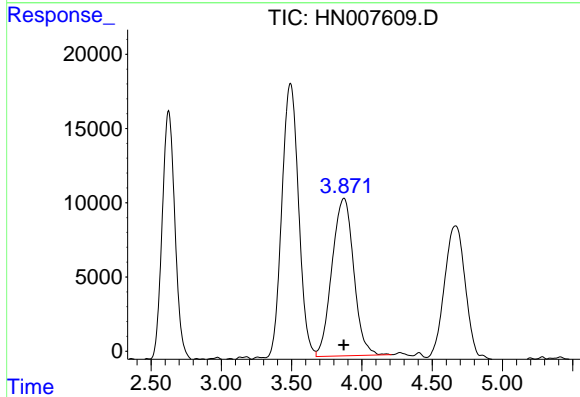
R.T.: 2.625 min
 Delta R.T.: 0.002 min
 Response: 1065829
 Conc: 91.98 ug/L



#5 1,3-Dinitrobenzene

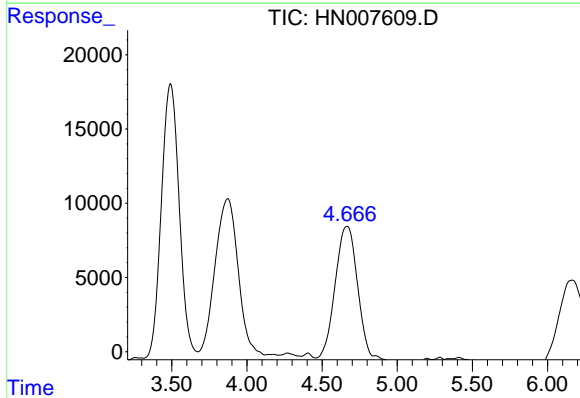
R.T.: 3.492 min
 Delta R.T.: 0.002 min
 Response: 1525859
 Conc: 89.77 ng/ml

Instrument :
 HPLC_N
 ClientSampled :



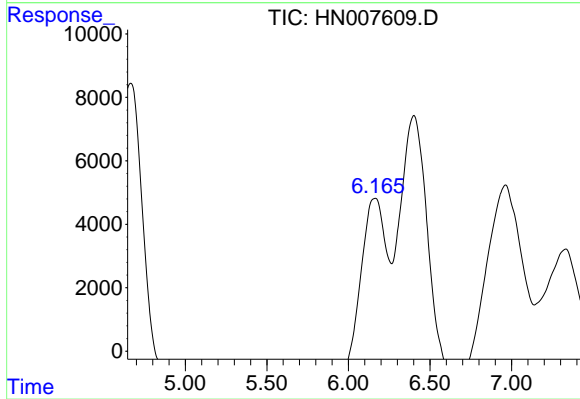
#6 3,5-Dinitroaniline

R.T.: 3.873 min
 Delta R.T.: 0.002 min
 Response: 1140882
 Conc: 92.23 ug/L



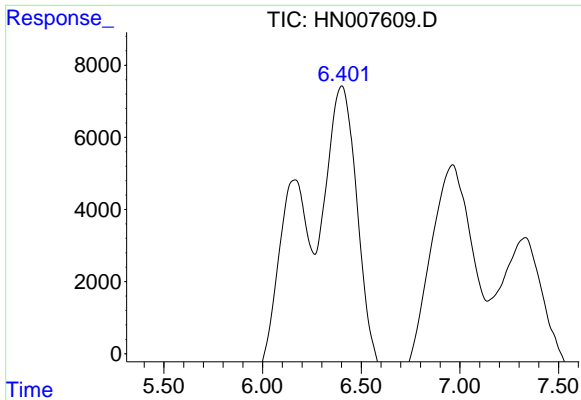
#7 Nitrobenzene

R.T.: 4.666 min
 Delta R.T.: 0.003 min
 Response: 934229
 Conc: 92.51 ug/L



#8 Tetryl

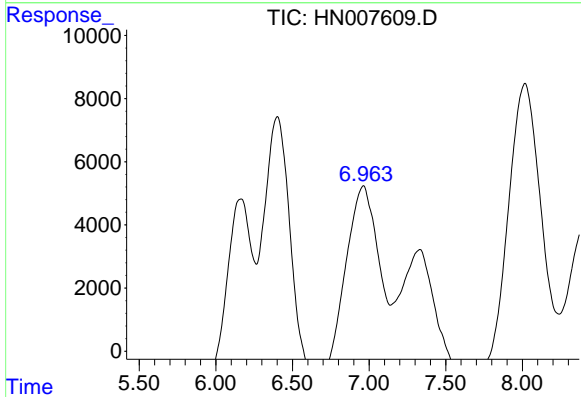
R.T.: 6.164 min
 Delta R.T.: 0.008 min
 Response: 688985
 Conc: 93.74 ug/L



#9 2,4,6-Trinitrotoluene

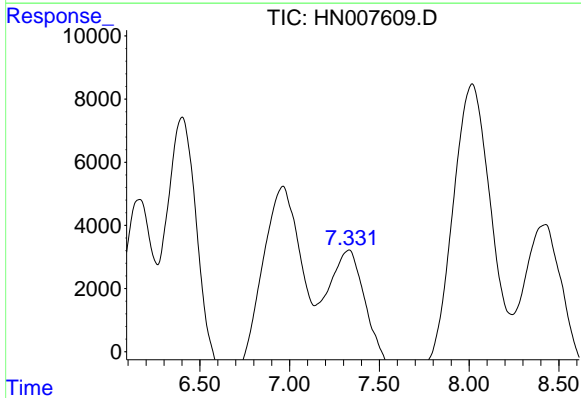
R.T.: 6.402 min
 Delta R.T.: 0.002 min
 Response: 1038794
 Conc: 89.14 ug/L

Instrument :
 HPLC_N
 ClientSampled :



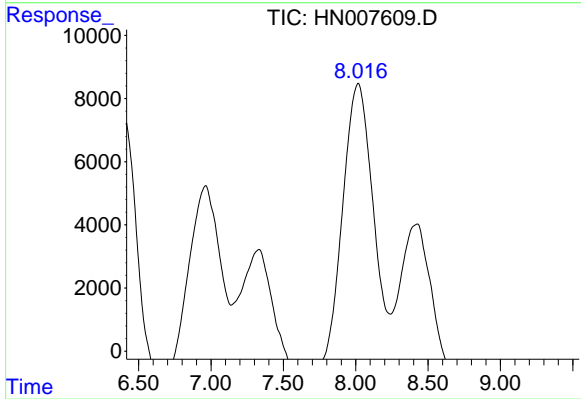
#10 2-Amino-4,6-dinitrotoluene

R.T.: 6.963 min
 Delta R.T.: -0.001 min
 Response: 1005723
 Conc: 89.70 ug/L



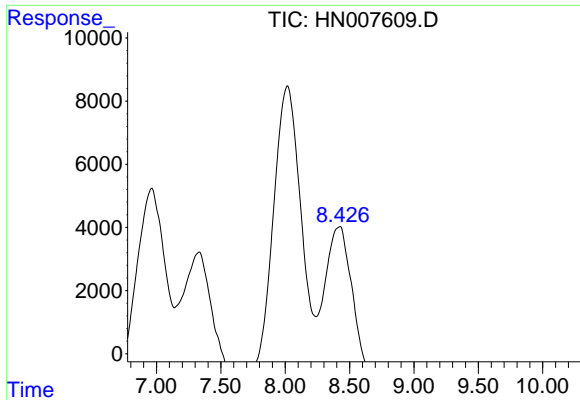
#11 4-Amino-2,6-dinitrotoluene

R.T.: 7.332 min
 Delta R.T.: 0.018 min
 Response: 702507
 Conc: 94.75 ug/L



#12 2,4-Dinitrotoluene

R.T.: 8.018 min
 Delta R.T.: 0.005 min
 Response: 1482375
 Conc: 96.06 ug/L



#13 2,6-Dinitrotoluene

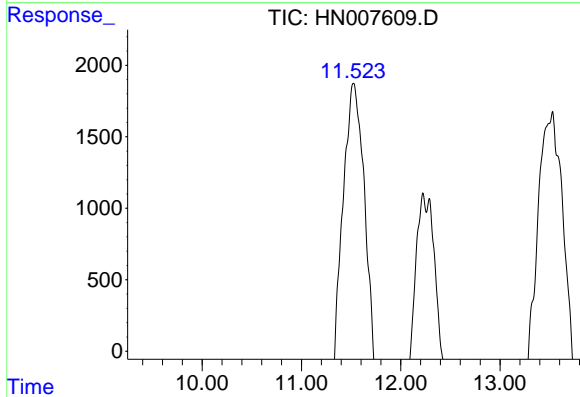
R.T.: 8.420 min

Delta R.T.: 0.009 min

Response: 794360

Conc: 87.59 ug/L

Instrument :
HPLC_N
ClientSampled :



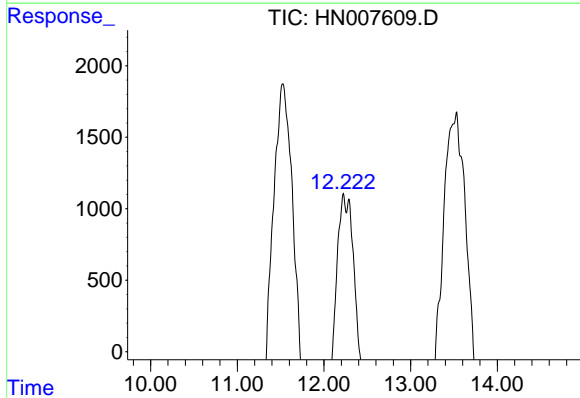
#14 2-Nitrotoluene

R.T.: 11.525 min

Delta R.T.: 0.000 min

Response: 634893

Conc: 94.95 ug/L



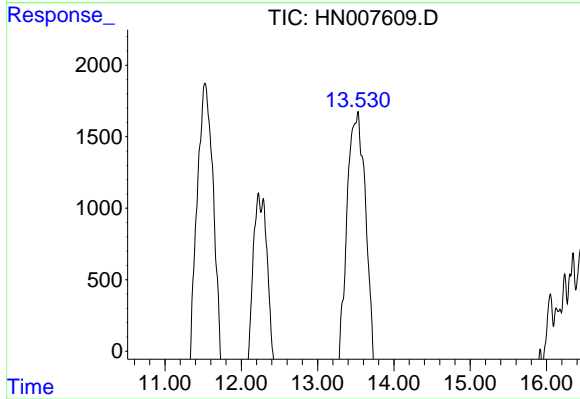
#15 4-Nitrotoluene

R.T.: 12.226 min

Delta R.T.: -0.023 min

Response: 473945

Conc: 87.80 ug/L



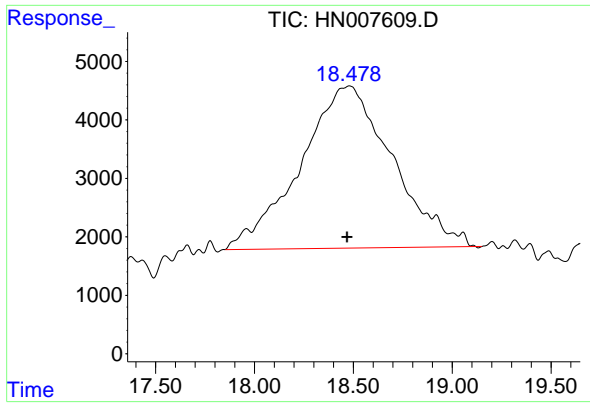
#16 3-Nitrotoluene

R.T.: 13.524 min

Delta R.T.: 0.025 min

Response: 695047

Conc: 101.56 ug/L



#17 PETN

R.T.: 18.480 min
Delta R.T.: 0.011 min
Response: 896645
Conc: 94.95 ug/L

Instrument :
HPLC_N
ClientSampled :