

Data Path : Z:\HPCHEM1\HPLC_N\Data\HN120315\
 Data File : HN007610.D
 Signal(s) : vwd1A.ch
 Acq On : 03-Dec-2015, 16:41
 Operator : UM/MA
 Sample : SSTDICV0500
 Misc :
 ALS Vial : 7 Sample Multiplier: 1

Instrument :
 HPLC_N
 ClientSampleId :
 ICVHN120315

Integration File: autoint1.e
 Quant Time: Dec 03 17:30:17 2015
 Quant Method : Z:\HPCHEM1\HPLC_N\Methods\HN120315.M
 Quant Title :
 QLast Update : Thu Dec 03 17:29:35 2015
 Response via : Initial Calibration
 Integrator: ChemStation

Volume Inj. : 50 ul
 Signal Phase : ZORBAX Extend-C18
 Signal Info : 4.6 X 100mm 3.5-Micron 80A

Compound	R.T.	Response	Conc Units

System Monitoring Compounds			
1) S 4-Nitroaniline	1.318	1881398	511.850 ug/L
Target Compounds			
2) T HMX	0.887	2283017	525.199 ug/L
3) T RDX	1.698	2869962	528.236 ug/L
4) T 1,3,5-Trinitrobenzene	2.624	6041726	528.473 ug/L
5) T 1,3-Dinitrobenzene	3.491	8734275	522.782 ng/ml
6) T 3,5-Dinitroaniline	3.870	6393762	523.640 ug/L
7) T Nitrobenzene	4.664	5168231	518.239 ug/L
8) T Tetryl	6.161	4006262	550.822 ug/L
9) T 2,4,6-Trinitrotoluene	6.403	6086589	531.926 ug/L
10) T 2-Amino-4,6-dinitroto...	6.968	5719518	519.012 ug/L
11) T 4-Amino-2,6-dinitroto...	7.318	3838474	522.262 ug/L
12) T 2,4-Dinitrotoluene	8.020	7853282	512.281 ug/L
13) T 2,6-Dinitrotoluene	8.421	4532317	510.291 ug/L
14) T 2-Nitrotoluene	11.537	3408313	514.057 ug/L
15) T 4-Nitrotoluene	12.260	2731668	516.578 ug/L
16) T 3-Nitrotoluene	13.512	3447703	502.463 ug/L
17) T PETN	18.494	4957027	529.372 ug/L

(f)=RT Delta > 1/2 Window

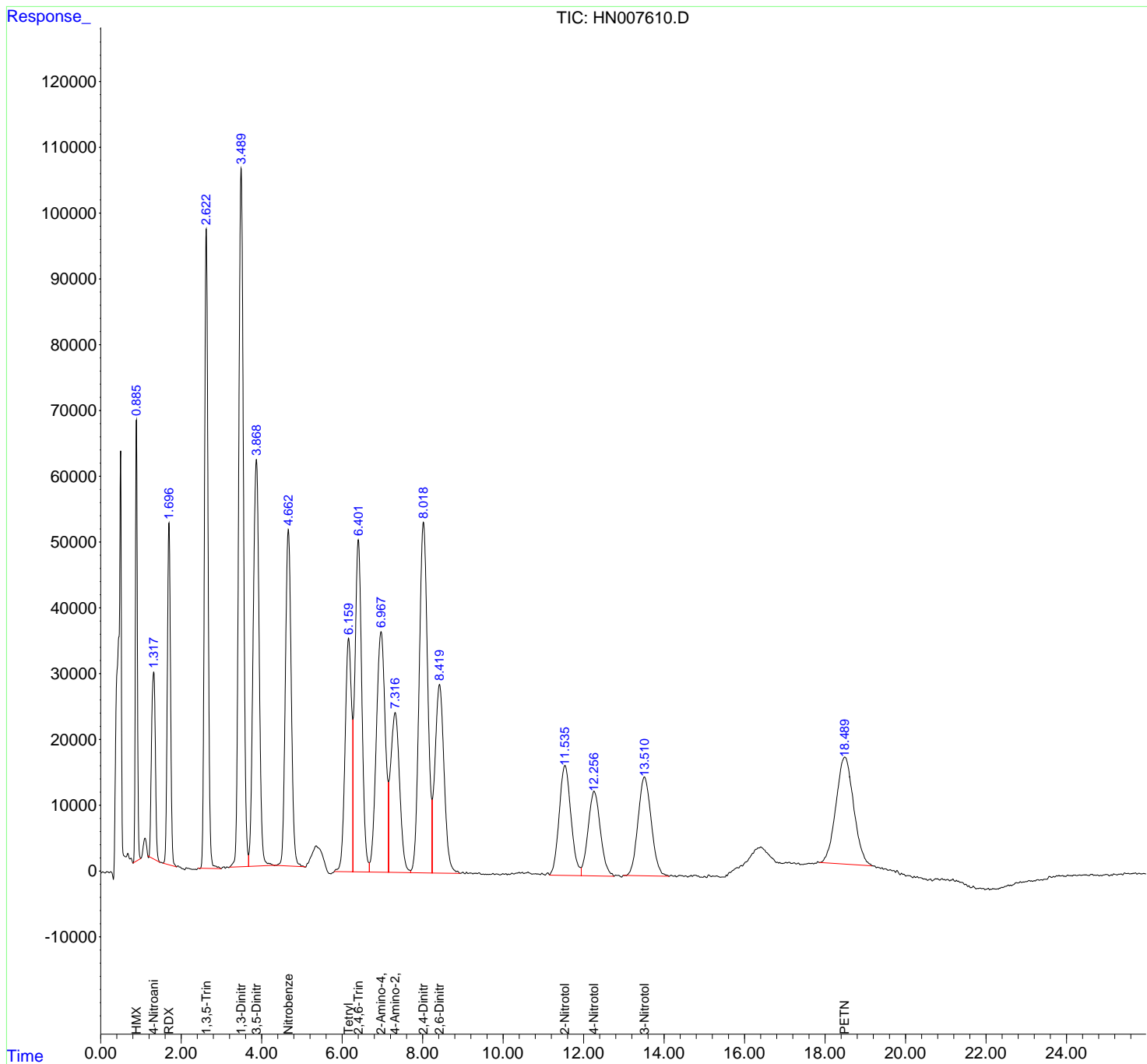
(m)=manual int.

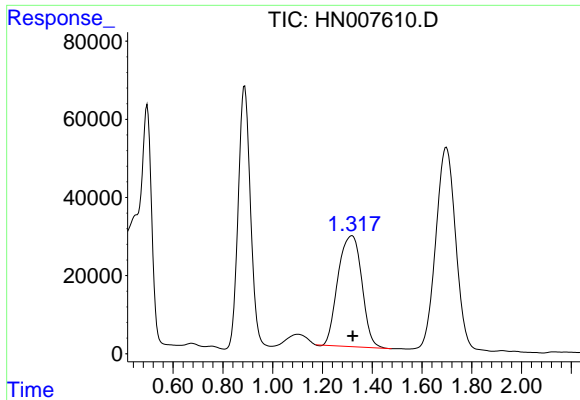
Data Path : Z:\HPCHEM1\HPLC_N\Data\HN120315\
 Data File : HN007610.D
 Signal(s) : vwd1A.ch
 Acq On : 03-Dec-2015, 16:41
 Operator : UM/MA
 Sample : SSTDICV0500
 Misc :
 ALS Vial : 7 Sample Multiplier: 1

Instrument :
 HPLC_N
 ClientSampled :
 ICVHN120315

Integration File: autoint1.e
 Quant Time: Dec 03 17:30:17 2015
 Quant Method : Z:\HPCHEM1\HPLC_N\Methods\HN120315.M
 Quant Title :
 QLast Update : Thu Dec 03 17:29:35 2015
 Response via : Initial Calibration
 Integrator: ChemStation

Volume Inj. : 50 ul
 Signal Phase : ZORBAX Extend-C18
 Signal Info : 4.6 X 100mm 3.5-Micron 80A

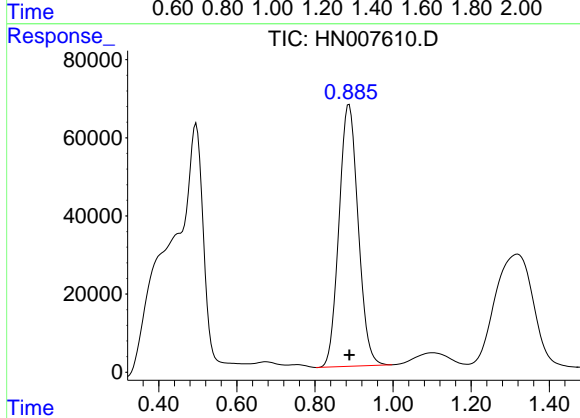




#1 4-Nitroaniline

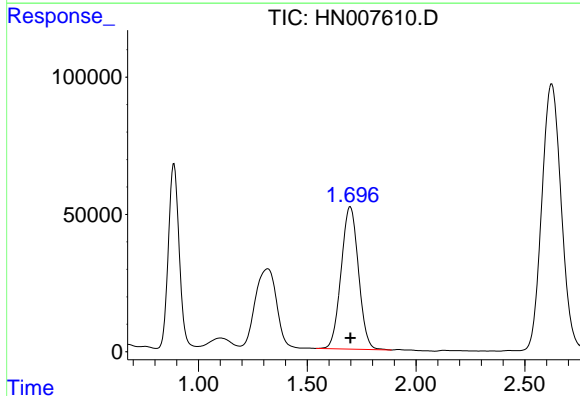
R.T.: 1.318 min
 Delta R.T.: -0.004 min
 Response: 1881398
 Conc: 511.85 ug/L

Instrument :
 HPLC_N
 ClientSampled :
 ICVHN120315



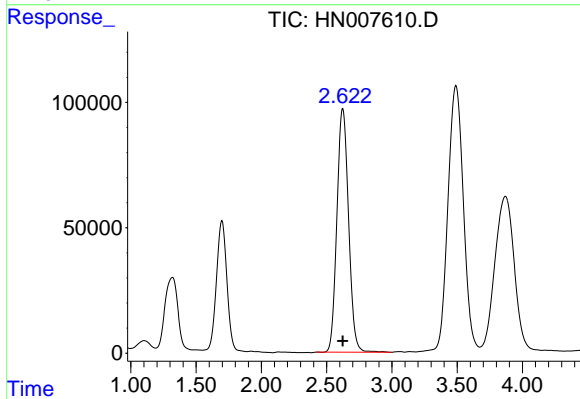
#2 HMX

R.T.: 0.887 min
 Delta R.T.: 0.000 min
 Response: 2283017
 Conc: 525.20 ug/L



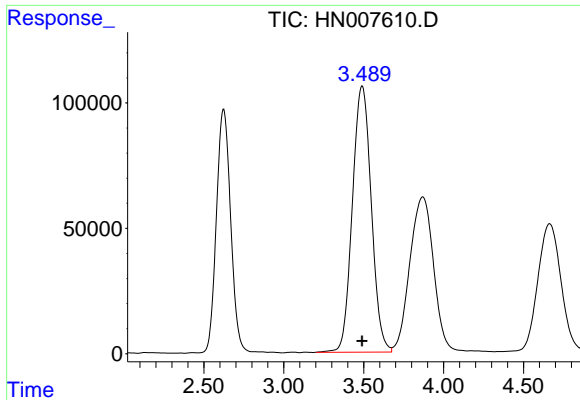
#3 RDX

R.T.: 1.698 min
 Delta R.T.: -0.001 min
 Response: 2869962
 Conc: 528.24 ug/L



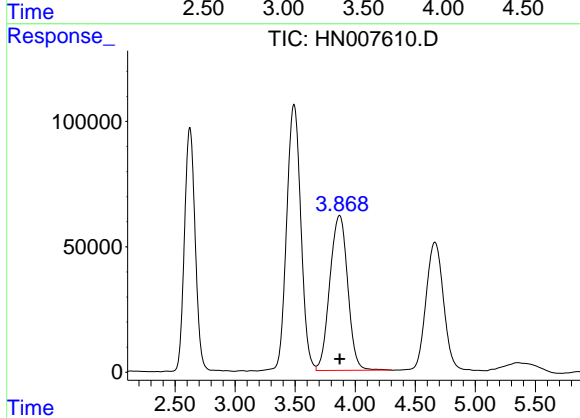
#4 1,3,5-Trinitrobenzene

R.T.: 2.624 min
 Delta R.T.: 0.000 min
 Response: 6041726
 Conc: 528.47 ug/L

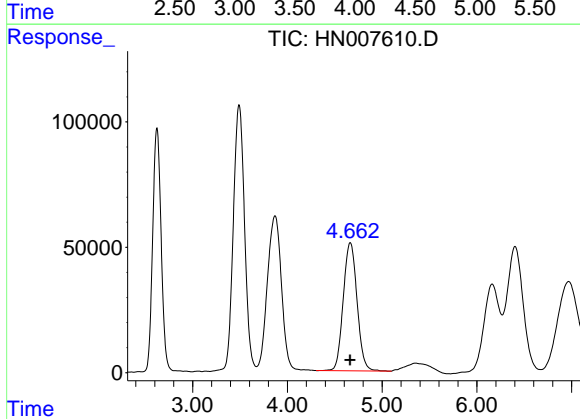


#5 1,3-Dinitrobenzene
 R.T.: 3.491 min
 Delta R.T.: 0.000 min
 Response: 8734275
 Conc: 522.78 ng/ml

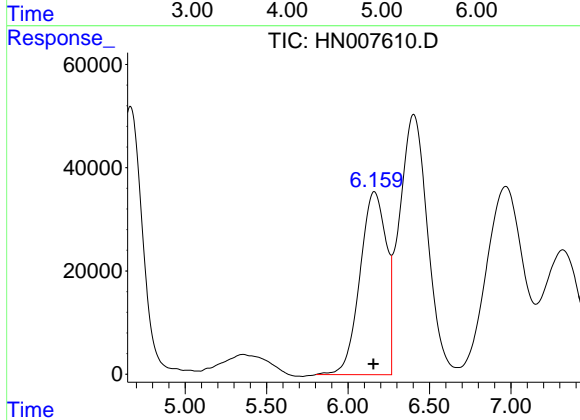
Instrument :
 HPLC_N
 ClientSampled :
 ICVHN120315



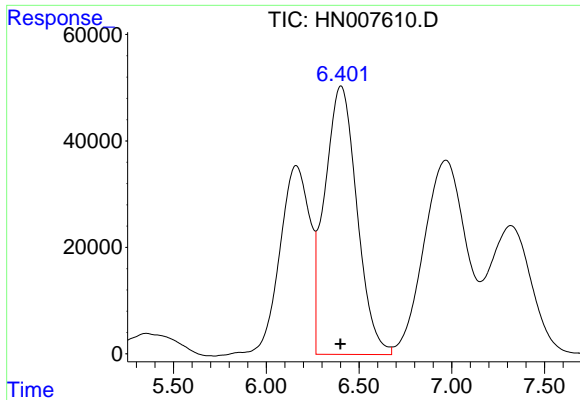
#6 3,5-Dinitroaniline
 R.T.: 3.870 min
 Delta R.T.: -0.001 min
 Response: 6393762
 Conc: 523.64 ug/L



#7 Nitrobenzene
 R.T.: 4.664 min
 Delta R.T.: 0.000 min
 Response: 5168231
 Conc: 518.24 ug/L



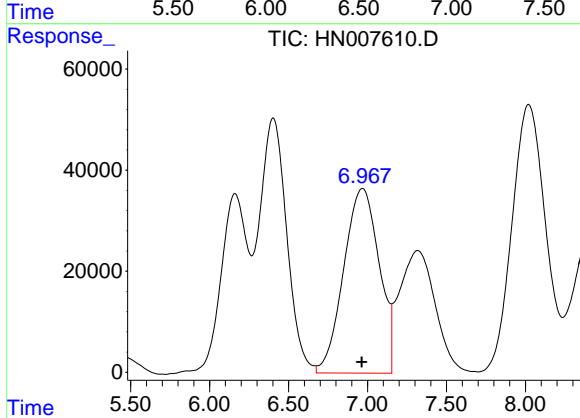
#8 Tetryl
 R.T.: 6.161 min
 Delta R.T.: 0.005 min
 Response: 4006262
 Conc: 550.82 ug/L



#9 2,4,6-Trinitrotoluene

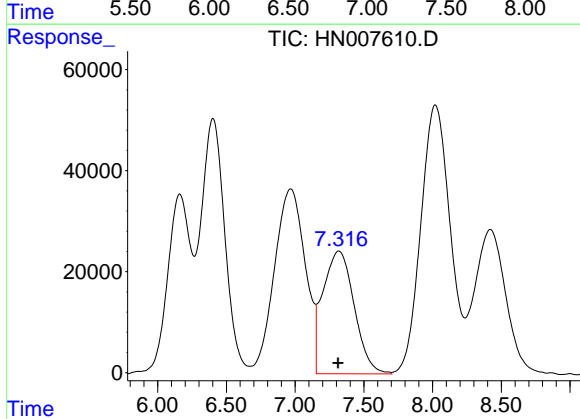
R.T.: 6.403 min
 Delta R.T.: 0.003 min
 Response: 6086589
 Conc: 531.93 ug/L

Instrument :
 HPLC_N
 ClientSampled :
 ICVHN120315



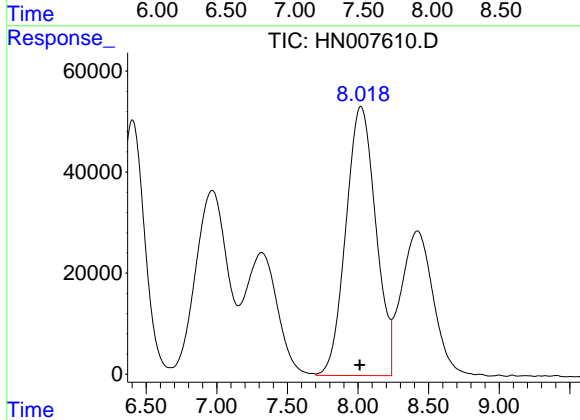
#10 2-Amino-4,6-dinitrotoluene

R.T.: 6.968 min
 Delta R.T.: 0.004 min
 Response: 5719518
 Conc: 519.01 ug/L



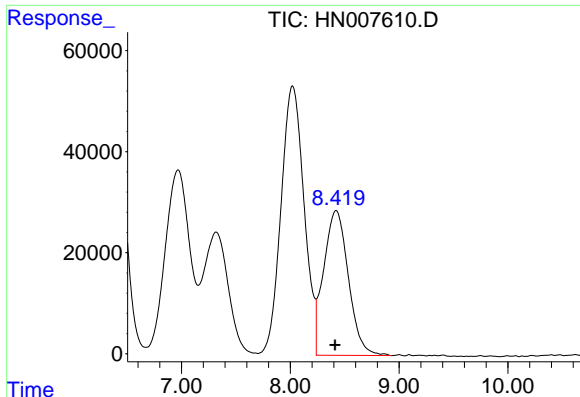
#11 4-Amino-2,6-dinitrotoluene

R.T.: 7.318 min
 Delta R.T.: 0.004 min
 Response: 3838474
 Conc: 522.26 ug/L



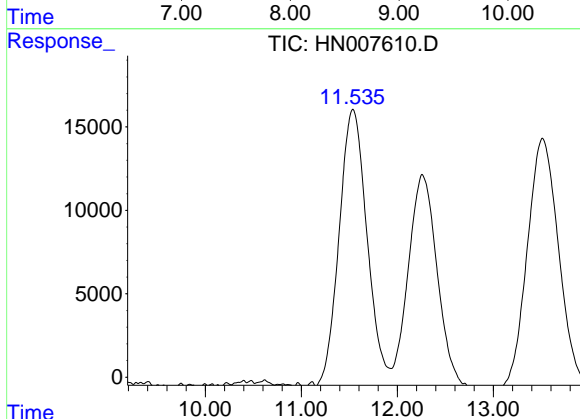
#12 2,4-Dinitrotoluene

R.T.: 8.020 min
 Delta R.T.: 0.008 min
 Response: 7853282
 Conc: 512.28 ug/L

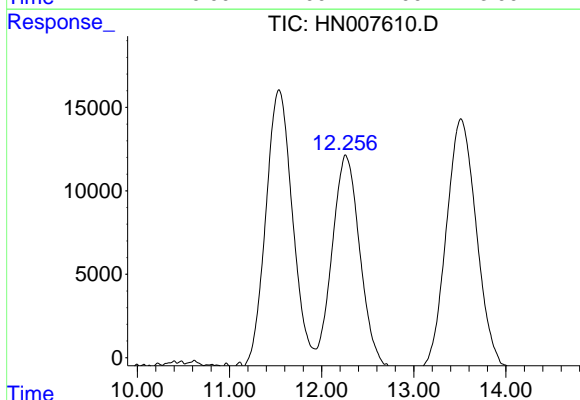


#13 2,6-Dinitrotoluene
 R.T.: 8.421 min
 Delta R.T.: 0.009 min
 Response: 4532317
 Conc: 510.29 ug/L

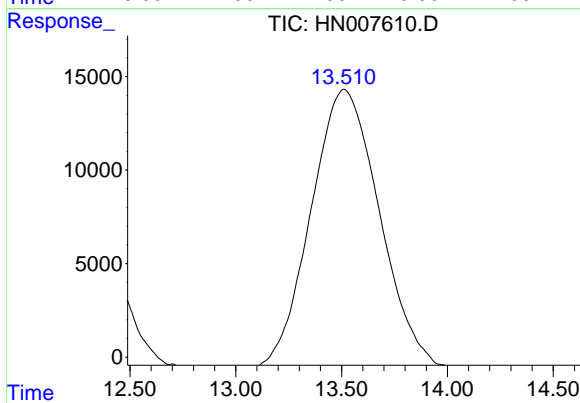
Instrument :
 HPLC_N
 ClientSampled :
 ICVHN120315



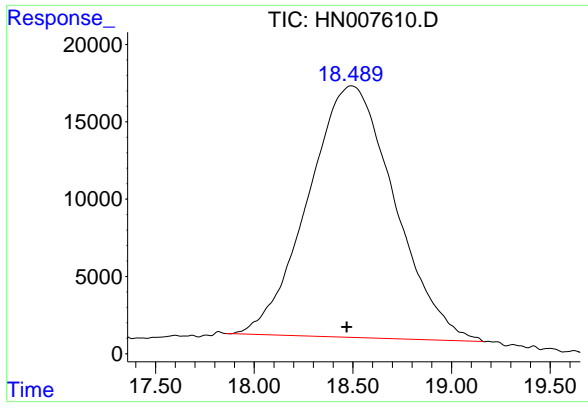
#14 2-Nitrotoluene
 R.T.: 11.537 min
 Delta R.T.: 0.013 min
 Response: 3408313
 Conc: 514.06 ug/L



#15 4-Nitrotoluene
 R.T.: 12.260 min
 Delta R.T.: 0.011 min
 Response: 2731668
 Conc: 516.58 ug/L



#16 3-Nitrotoluene
 R.T.: 13.512 min
 Delta R.T.: 0.014 min
 Response: 3447703
 Conc: 502.46 ug/L



#17 PETN

R.T.: 18.494 min
Delta R.T.: 0.025 min
Response: 4957027
Conc: 529.37 ug/L

Instrument :
HPLC_N
ClientSampled :
ICVHN120315