

Data Path : Z:\HPCHEM1\HPLC_N\Data\HN032416\
 Data File : HN007694.D
 Signal(s) : vwd1A.ch
 Acq On : 24-Mar-2016, 17:11
 Operator : UM/MA
 Sample : HSTDCCC0500
 Misc :
 ALS Vial : 4 Sample Multiplier: 1

Instrument :
 HPLC_N
 ClientSampleId :
 HSTDCCC0500

Manual Integrations
 APPROVED

Sohil
 3/25/2016 2:58:34 PM

Integration File: autoint1.e
 Quant Time: Mar 24 17:50:49 2016
 Quant Method : Z:\HPCHEM1\HPLC_N\Methods\HN032416.M
 Quant Title :
 QLast Update : Thu Mar 24 16:31:55 2016
 Response via : Initial Calibration
 Integrator: ChemStation

Volume Inj. : 50 ul
 Signal Phase : ZORBAX Extend-C18
 Signal Info : 4.6 X 100mm 3.5-Micron 80A

Compound	R.T.	Response	Conc Units

System Monitoring Compounds			
1) S 4-Nitroaniline	1.332	1945567	482.707 ug/L
Target Compounds			
2) T HMX	0.898	2091281	498.638 ug/L
3) T RDX	1.718	2667769	516.525 ug/L
4) T 1,3,5-Trinitrobenzene	2.656	5547710	516.514 ug/L
5) T 1,3-Dinitrobenzene	3.535	8134106	508.443 ng/ml
6) T 3,5-Dinitroaniline	3.937	6344866	508.528 ug/L
7) T Nitrobenzene	4.720	4769520	510.624 ug/L
8) T Tetryl	6.280	2914515	570.015 ug/L m
9) T 2,4,6-Trinitrotoluene	6.491	5838578	498.876 ug/L
10) T 2-Amino-4,6-dinitroto...	7.108	5469215	514.785 ug/L
11) T 4-Amino-2,6-dinitroto...	7.457	3509239	518.365 ug/L
12) T 2,4-Dinitrotoluene	8.137	7482698	515.445 ug/L
13) T 2,6-Dinitrotoluene	8.539	4278599	516.715 ug/L
14) T 2-Nitrotoluene	11.684	3281973	511.227 ug/L
15) T 4-Nitrotoluene	12.426	2752236	540.968 ug/L
16) T 3-Nitrotoluene	13.692	3381595	514.291 ug/L
17) T PETN	18.793	5636680	550.836 ug/L

(f)=RT Delta > 1/2 Window

(m)=manual int.

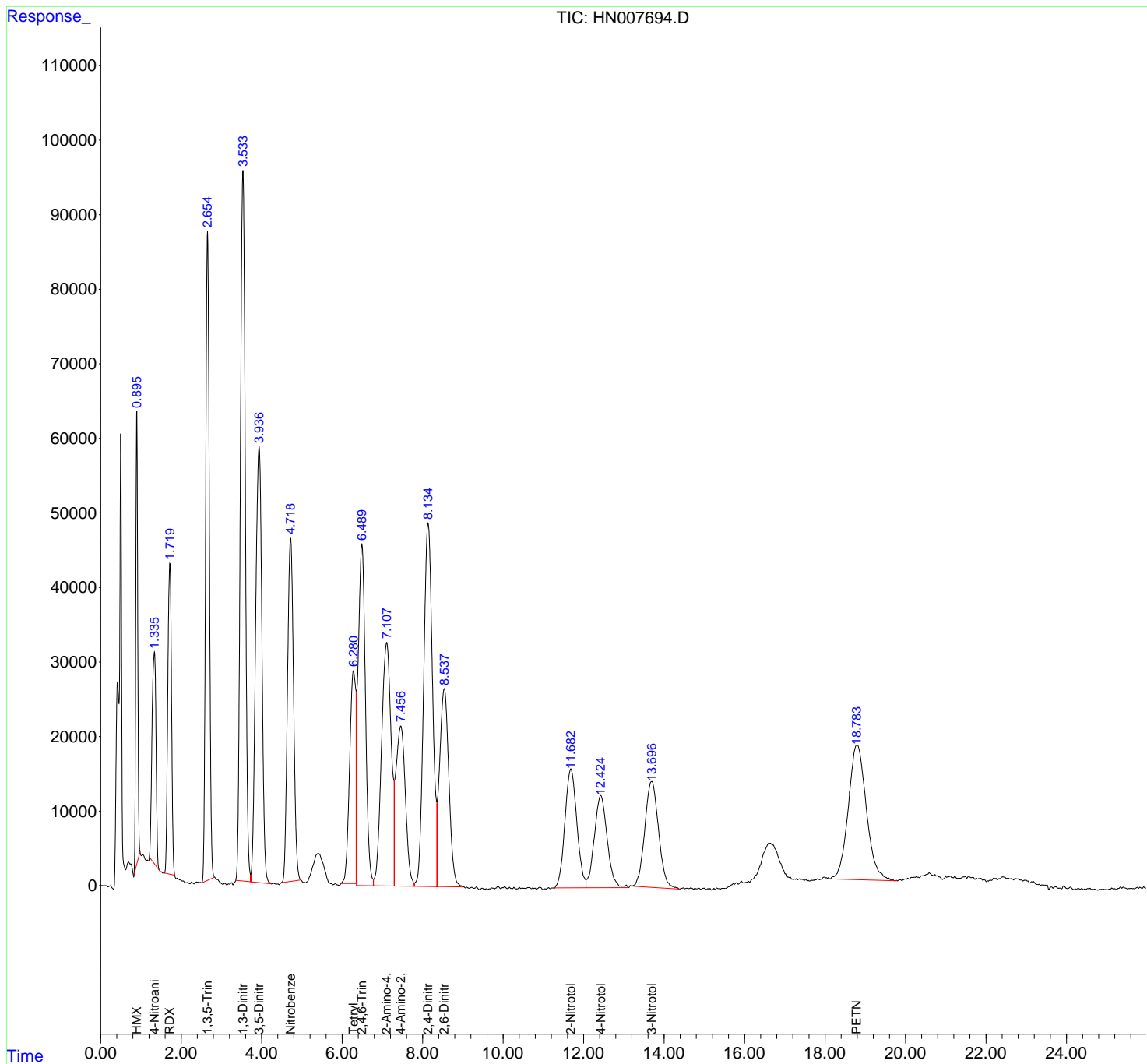
Data Path : Z:\HPCHEM1\HPLC_N\Data\HN032416\
 Data File : HN007694.D
 Signal(s) : vwd1A.ch
 Acq On : 24-Mar-2016, 17:11
 Operator : UM/MA
 Sample : HSTDCCC0500
 Misc :
 ALS Vial : 4 Sample Multiplier: 1

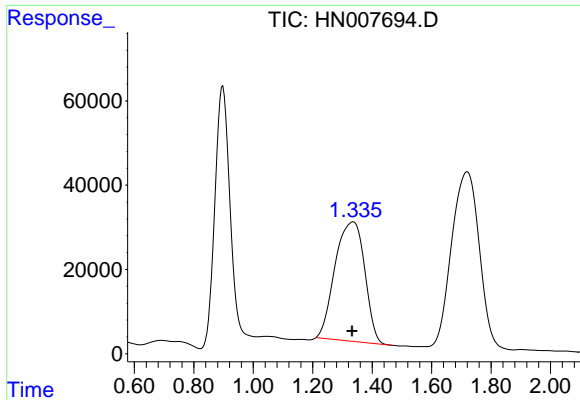
Instrument :
 HPLC_N
 ClientSampled :
 HSTDCCC0500

Manual Integrations
 APPROVED
 Sohil
 3/25/2016 2:58:34 PM

Integration File: autoint1.e
 Quant Time: Mar 24 17:50:49 2016
 Quant Method : Z:\HPCHEM1\HPLC_N\Methods\HN032416.M
 Quant Title :
 QLast Update : Thu Mar 24 16:31:55 2016
 Response via : Initial Calibration
 Integrator: ChemStation

Volume Inj. : 50 ul
 Signal Phase : ZORBAX Extend-C18
 Signal Info : 4.6 X 100mm 3.5-Micron 80A



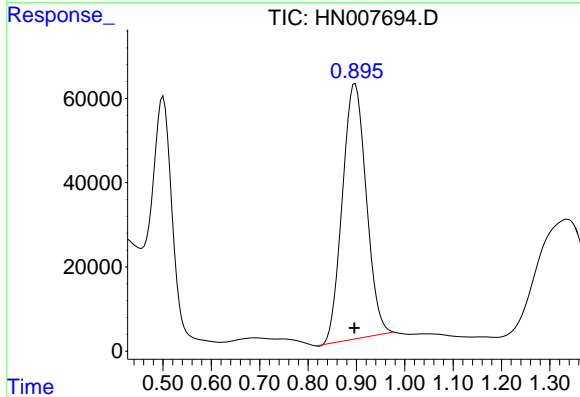


#1 4-Nitroaniline

R.T.: 1.332 min
 Delta R.T.: 0.000 min
 Response: 1945567
 Conc: 482.71 ug/L

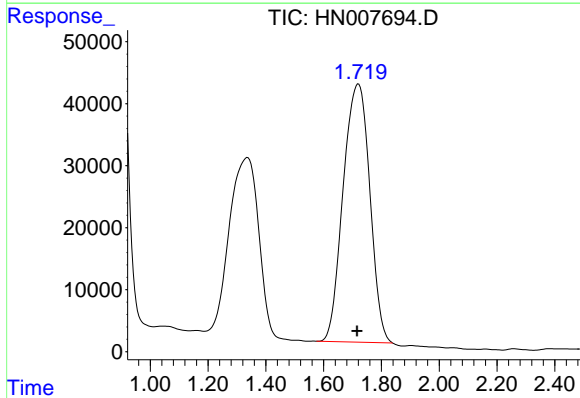
Instrument :
 HPLC_N
 ClientSampled :
 HSTDCCC0500

Manual Integrations
 APPROVED
 Sohil
 3/25/2016 2:58:34 PM



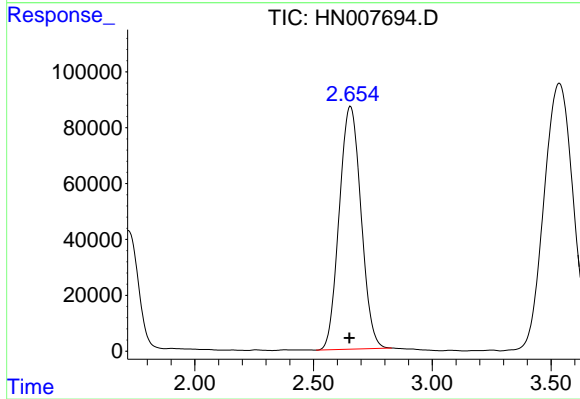
#2 HMX

R.T.: 0.898 min
 Delta R.T.: 0.001 min
 Response: 2091281
 Conc: 498.64 ug/L



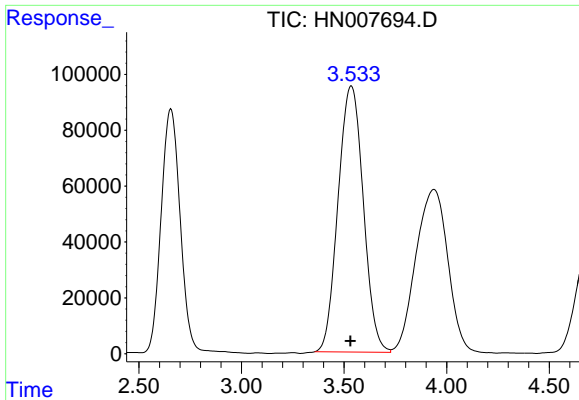
#3 RDX

R.T.: 1.718 min
 Delta R.T.: 0.003 min
 Response: 2667769
 Conc: 516.52 ug/L



#4 1,3,5-Trinitrobenzene

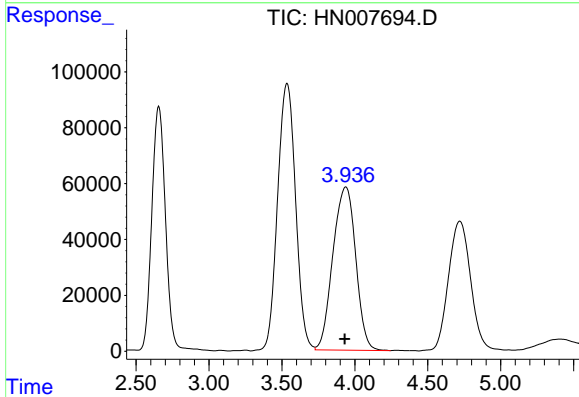
R.T.: 2.656 min
 Delta R.T.: 0.004 min
 Response: 5547710
 Conc: 516.51 ug/L



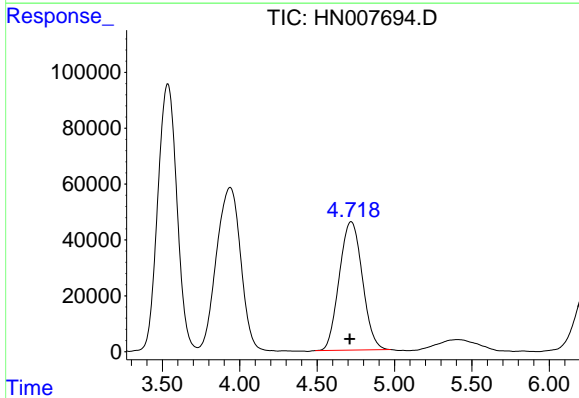
#5 1,3-Dinitrobenzene
 R.T.: 3.535 min
 Delta R.T.: 0.004 min
 Response: 8134106
 Conc: 508.44 ng/ml

Instrument :
 HPLC_N
 ClientSampled :
 HSTDCCC0500

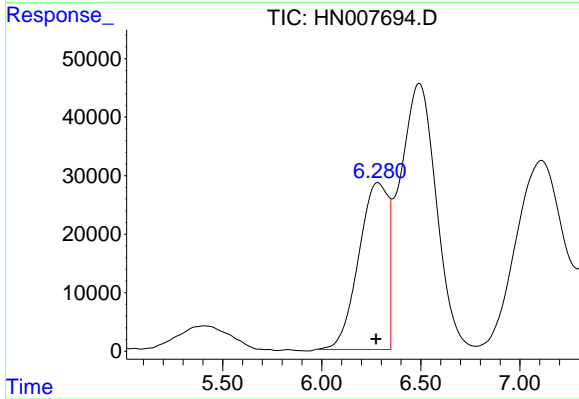
Manual Integrations
 APPROVED
 Sohil
 3/25/2016 2:58:34 PM



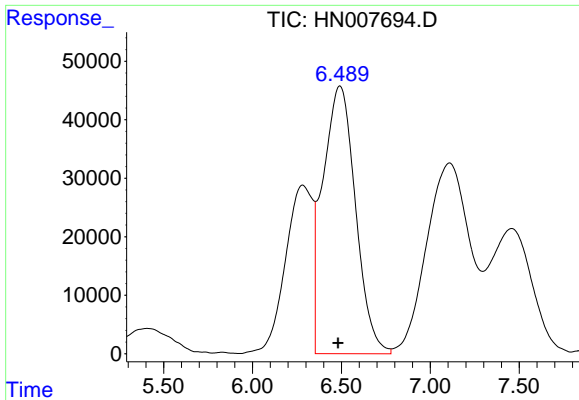
#6 3,5-Dinitroaniline
 R.T.: 3.937 min
 Delta R.T.: 0.006 min
 Response: 6344866
 Conc: 508.53 ug/L



#7 Nitrobenzene
 R.T.: 4.720 min
 Delta R.T.: 0.008 min
 Response: 4769520
 Conc: 510.62 ug/L



#8 Tetryl
 R.T.: 6.280 min
 Delta R.T.: 0.004 min
 Response: 2914515
 Conc: 570.01 ug/L m

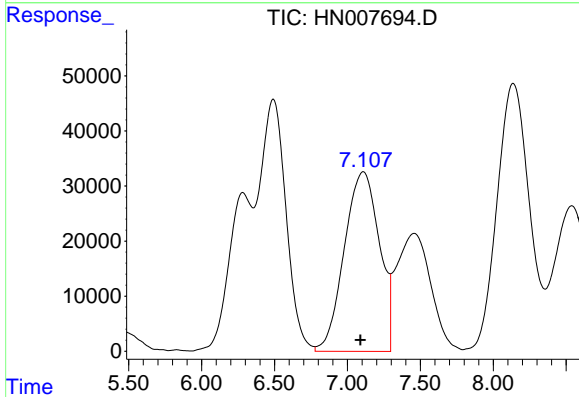


#9 2,4,6-Trinitrotoluene

R.T.: 6.491 min
 Delta R.T.: 0.009 min
 Response: 5838578
 Conc: 498.88 ug/L

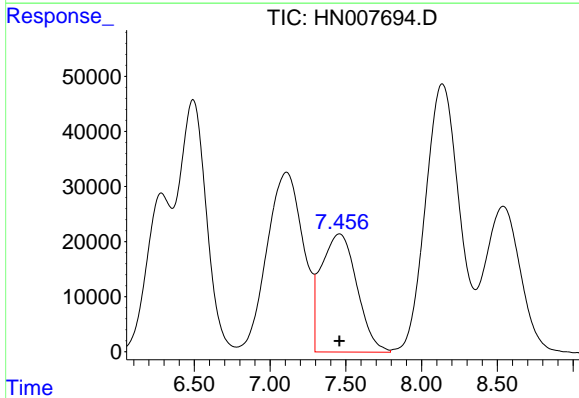
Instrument :
 HPLC_N
 ClientSampled :
 HSTDCCC0500

Manual Integrations
 APPROVED
 Sohil
 3/25/2016 2:58:34 PM



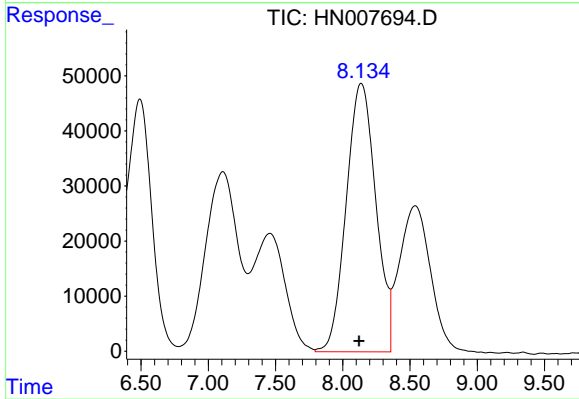
#10 2-Amino-4,6-dinitrotoluene

R.T.: 7.108 min
 Delta R.T.: 0.019 min
 Response: 5469215
 Conc: 514.79 ug/L



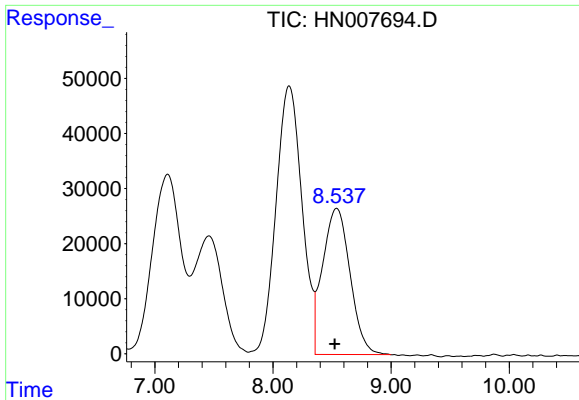
#11 4-Amino-2,6-dinitrotoluene

R.T.: 7.457 min
 Delta R.T.: 0.000 min
 Response: 3509239
 Conc: 518.36 ug/L



#12 2,4-Dinitrotoluene

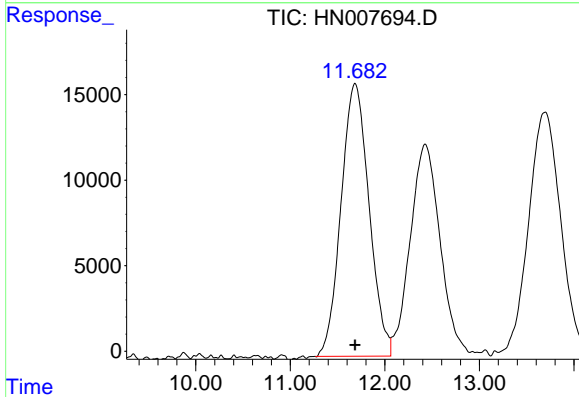
R.T.: 8.137 min
 Delta R.T.: 0.015 min
 Response: 7482698
 Conc: 515.44 ug/L



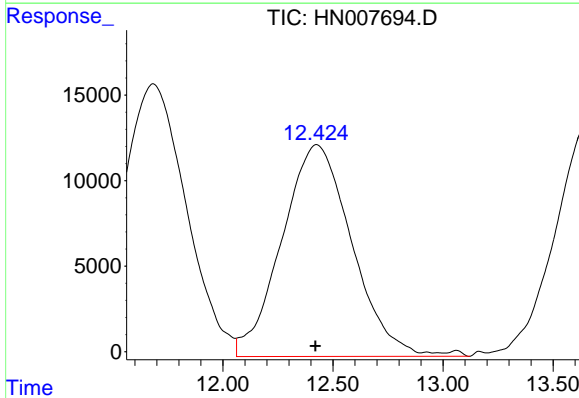
#13 2,6-Dinitrotoluene
 R.T.: 8.539 min
 Delta R.T.: 0.014 min
 Response: 4278599
 Conc: 516.72 ug/L

Instrument :
 HPLC_N
 ClientSampleId :
 HSTDCCC0500

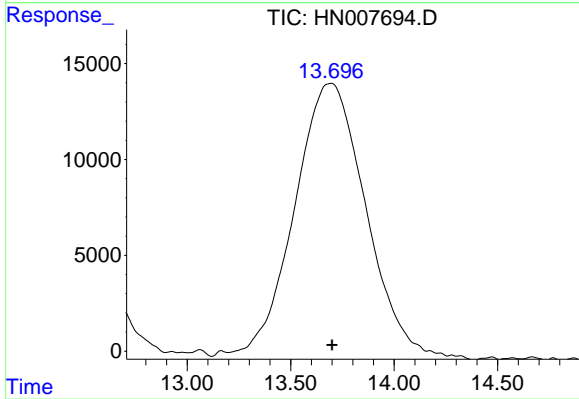
Manual Integrations
 APPROVED
 Sohil
 3/25/2016 2:58:34 PM



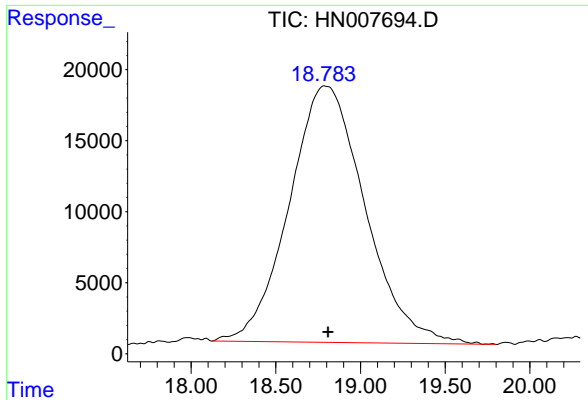
#14 2-Nitrotoluene
 R.T.: 11.684 min
 Delta R.T.: 0.000 min
 Response: 3281973
 Conc: 511.23 ug/L



#15 4-Nitrotoluene
 R.T.: 12.426 min
 Delta R.T.: 0.006 min
 Response: 2752236
 Conc: 540.97 ug/L



#16 3-Nitrotoluene
 R.T.: 13.692 min
 Delta R.T.: -0.008 min
 Response: 3381595
 Conc: 514.29 ug/L



#17 PETN

R.T.: 18.793 min
Delta R.T.: -0.016 min
Response: 5636680
Conc: 550.84 ug/L

Instrument :
HPLC_N
ClientSampled :
HSTDCCC0500

Manual Integrations
APPROVED
Sohil
3/25/2016 2:58:34 PM