

Data Path : S:\HPCHEM1\HPLC_N\Data\HN081512\
 Data File : HN000451.D
 Signal(s) : VWD1A.CH
 Acq On : 15-Aug-2012, 16:56
 Operator : HLM
 Sample : 8330-2
 Misc :
 ALS Vial : 6 Sample Multiplier: 1

Integration File: events.e
 Quant Time: Aug 22 01:26:59 2012
 Quant Method : H:\VOL1\HPLC\HPLC_N\METHODS\HN081512.M
 Quant Title : SW8330 / 8330A confirmation
 QLast Update : Wed May 02 10:40:51 2012
 Response via : Initial Calibration
 Integrator: ChemStation

Volume Inj. :
 Signal Phase :
 Signal Info :

Compound	R.T.	Response	Conc Units

System Monitoring Compounds			
1) S 4-Nitroaniline	7.525	981726	94.209 ug/L
Target Compounds			
2) T HMX	12.554	988724	92.114 ug/L
3) T RDX	10.500	1331950	94.990 ug/L
4) T 1,3,5-Trinitrobenzene	24.076	1723569	58.891 ug/L
5) T Tetryl	33.734	2159556	98.496 ug/L
6) T 2,4,6-Trinitrotoluene	32.152	1268057	46.336 ug/L m
7) T 2-Amino-4,6-dinitroto...	15.731	2372092	46.729 ug/L
8) T 4-Amino-2,6-dinitroto...	15.731	2372092	46.729 ug/L
9) T 2,4-Dinitrotoluene	21.122	1869562	48.051 ug/L m
10) T 2,6-Dinitrotoluene	19.737	991583	49.135 ug/L m
11) T 1,3-Dinitrobenzene	15.371	1868036	45.462 ug/L
12) T Nitrobenzene	11.993	1264701	46.360 ug/L
13) T 2-Nitrotoluene	16.318	1638223	94.288 ug/L
14) T 3-Nitrotoluene	17.509	1877001	97.184 ug/L
15) T 4-Nitrotoluene	16.831	1470230	97.552 ug/L
16) T 3,5-Dinitroaniline	13.309	3302470	93.418 ug/L

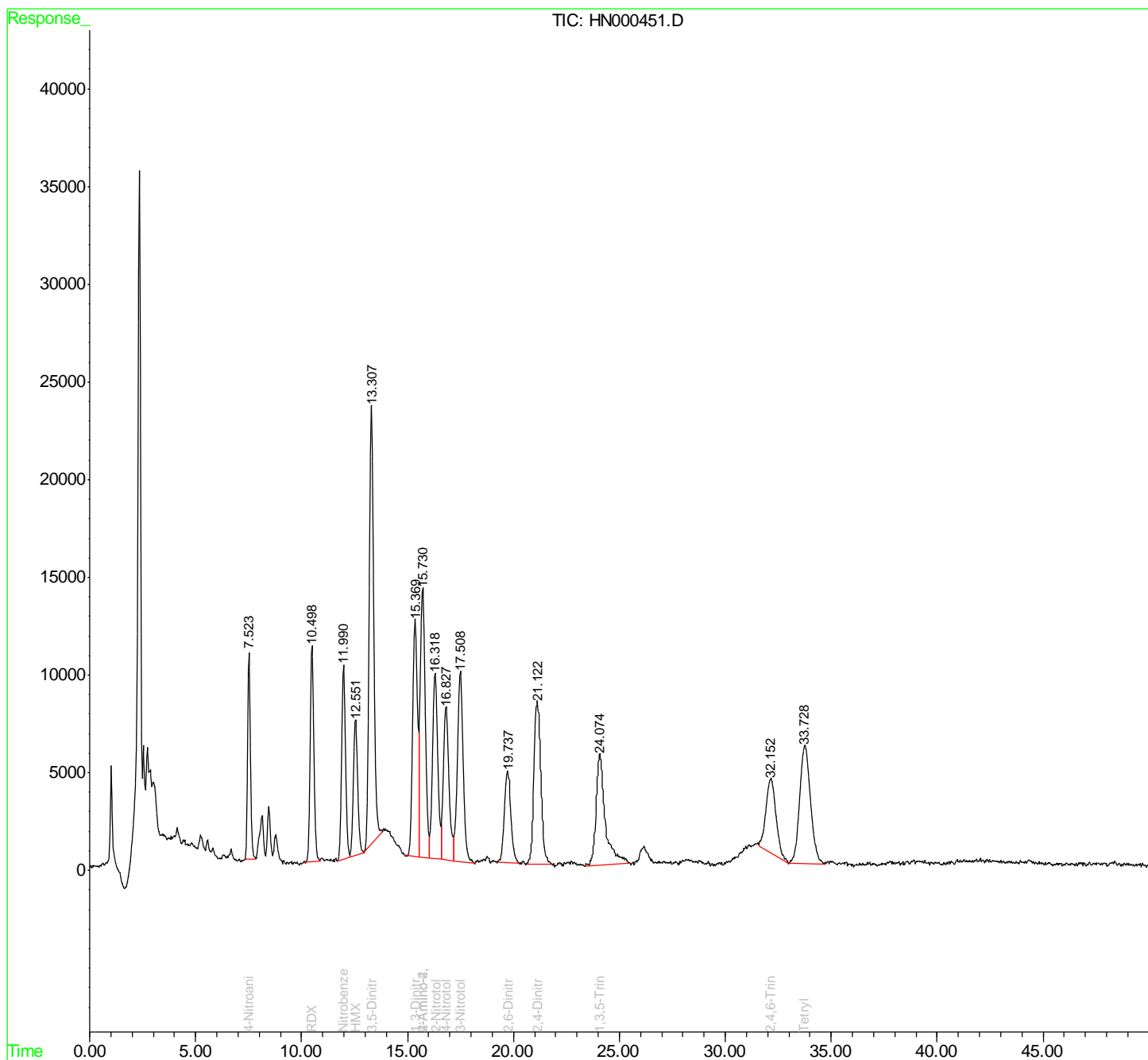
(f)=RT Delta > 1/2 Window

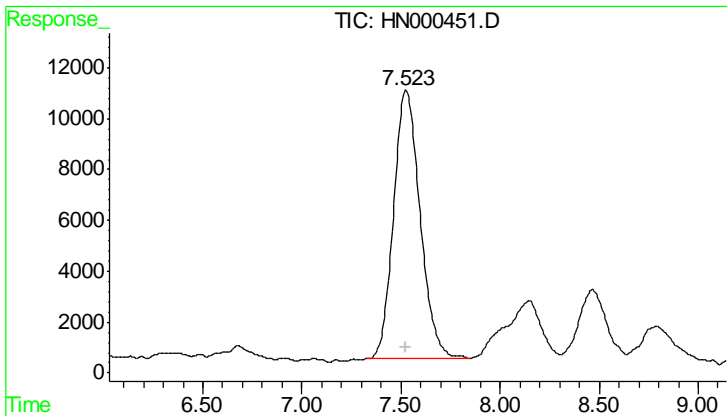
(m)=manual int.

Data Path : S:\HPCHEM1\HPLC_N\Data\HN081512\
 Data File : HN000451.D
 Signal(s) : VWD1A.CH
 Acq On : 15-Aug-2012, 16:56
 Operator : HLM
 Sample : 8330-2
 Misc :
 ALS Vial : 6 Sample Multiplier: 1

Integration File: events.e
 Quant Time: Aug 22 01:26:59 2012
 Quant Method : H:\VOL1\HPLC\HPLC_N\METHODS\HN081512.M
 Quant Title : SW8330 / 8330A confirmation
 QLast Update : Wed May 02 10:40:51 2012
 Response via : Initial Calibration
 Integrator: ChemStation

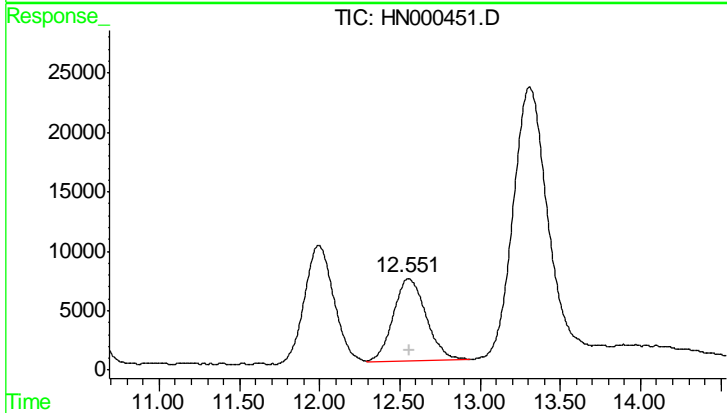
Volume Inj. :
 Signal Phase :
 Signal Info :





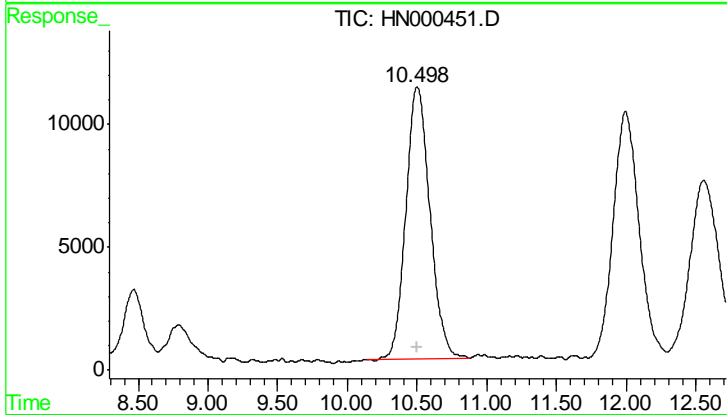
#1 4-Nitroaniline

R.T.: 7.525 min
 Delta R.T.: 0.001 min
 Response: 981726
 Conc: 94.21 ug/L



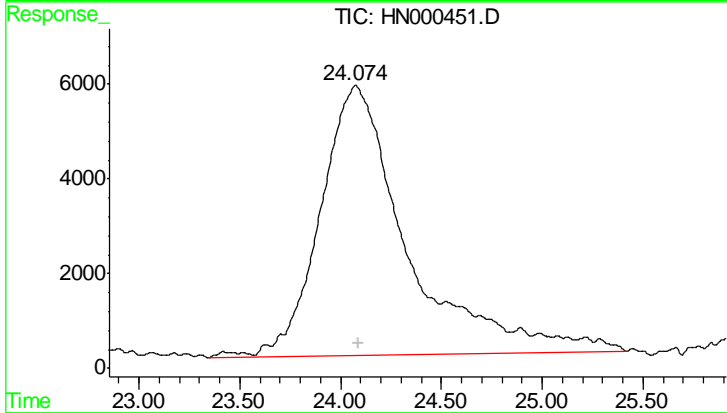
#2 HMX

R.T.: 12.554 min
 Delta R.T.: -0.004 min
 Response: 988724
 Conc: 92.11 ug/L



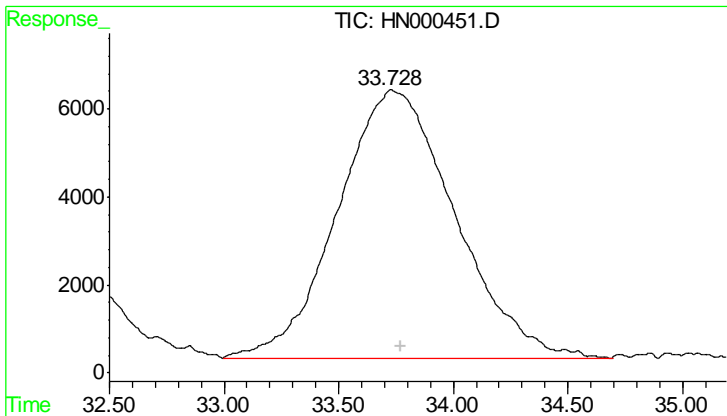
#3 RDX

R.T.: 10.500 min
 Delta R.T.: 0.000 min
 Response: 1331950
 Conc: 94.99 ug/L



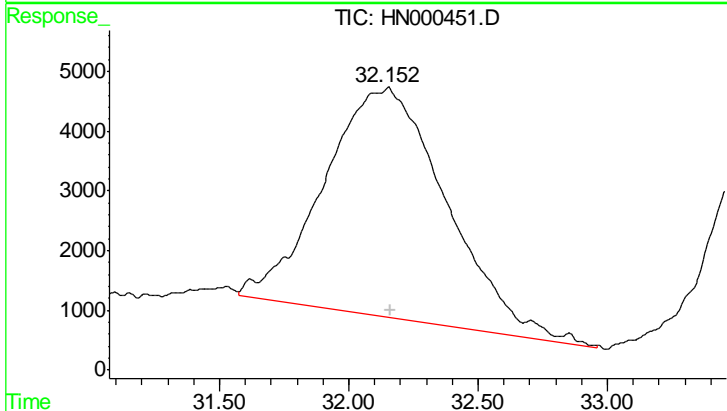
#4 1,3,5-Trinitrobenzene

R.T.: 24.076 min
 Delta R.T.: -0.012 min
 Response: 1723569
 Conc: 58.89 ug/L



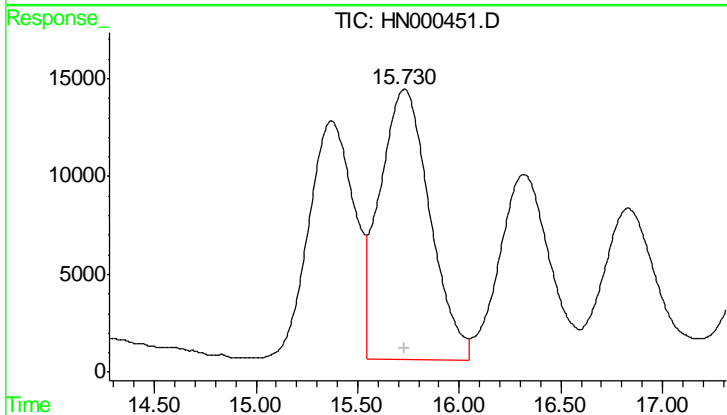
#5 Tetryl

R.T.: 33.734 min
 Delta R.T.: -0.038 min
 Response: 2159556
 Conc: 98.50 ug/L



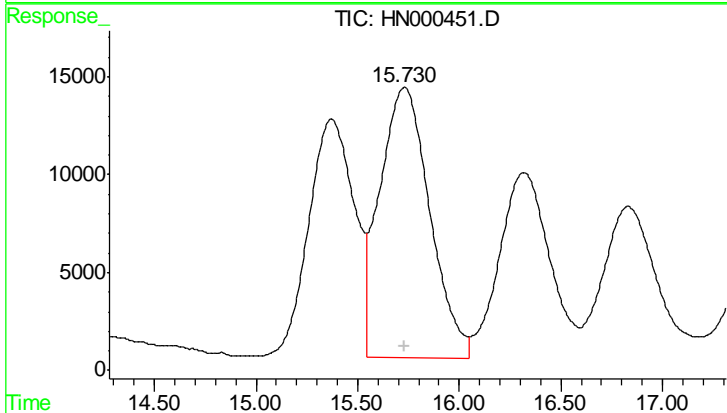
#6 2,4,6-Trinitrotoluene

R.T.: 32.152 min
 Delta R.T.: -0.007 min
 Response: 1268057
 Conc: 46.34 ug/L m



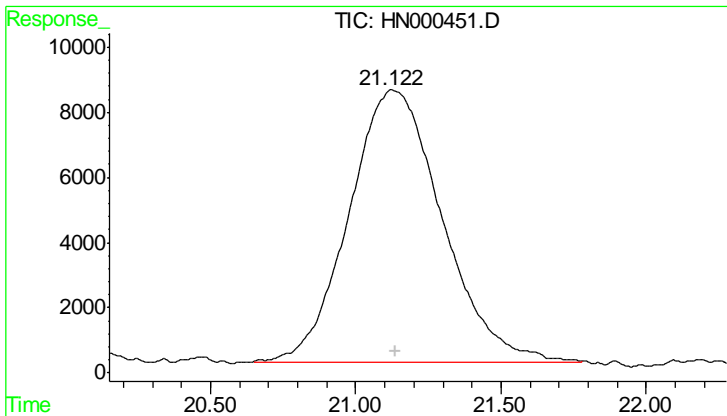
#7 2-Amino-4,6-dinitrotoluene

R.T.: 15.731 min
 Delta R.T.: 0.001 min
 Response: 2372092
 Conc: 46.73 ug/L

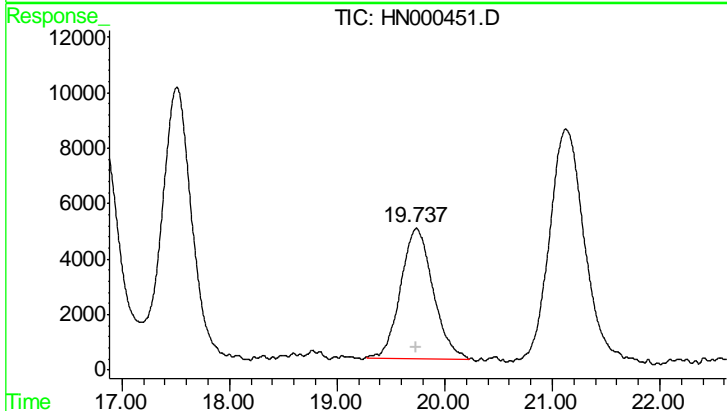


#8 4-Amino-2,6-dinitrotoluene

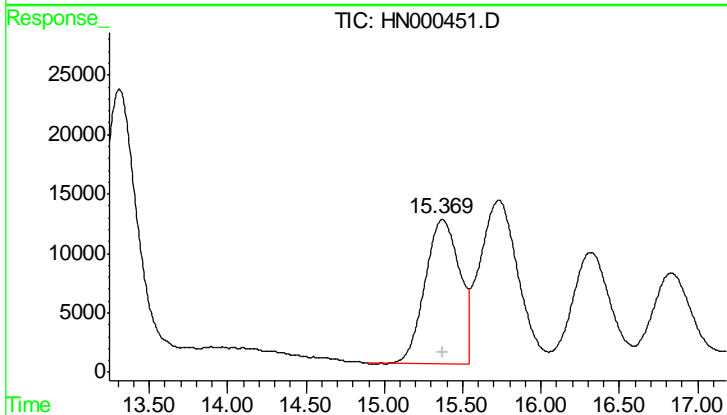
R.T.: 15.731 min
 Delta R.T.: 0.001 min
 Response: 2372092
 Conc: 46.73 ug/L



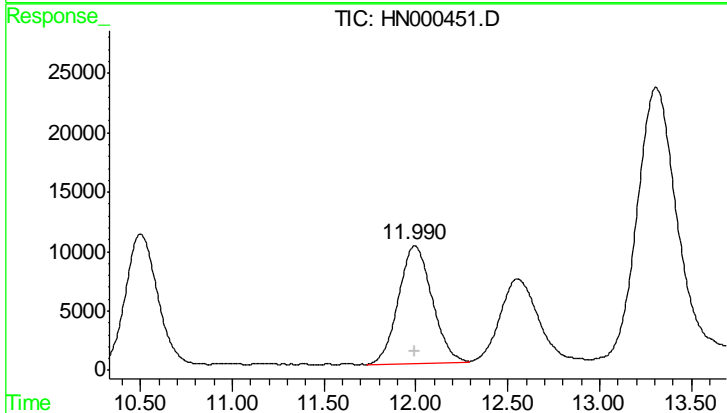
#9 2,4-Dinitrotoluene
 R.T.: 21.122 min
 Delta R.T.: -0.015 min
 Response: 1869562
 Conc: 48.05 ug/L m



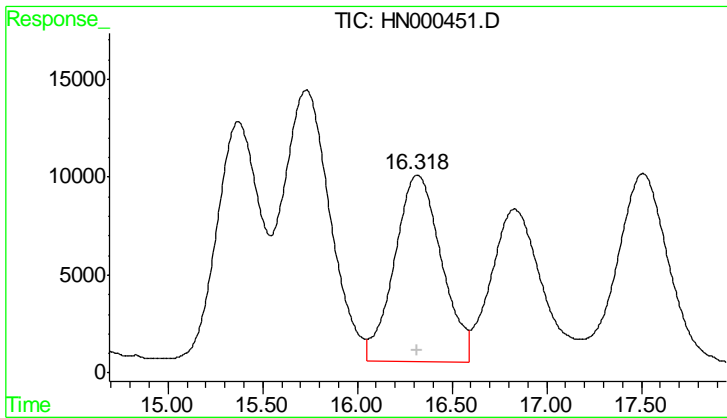
#10 2,6-Dinitrotoluene
 R.T.: 19.737 min
 Delta R.T.: -0.002 min
 Response: 991583
 Conc: 49.13 ug/L m



#11 1,3-Dinitrobenzene
 R.T.: 15.371 min
 Delta R.T.: 0.000 min
 Response: 1868036
 Conc: 45.46 ug/L

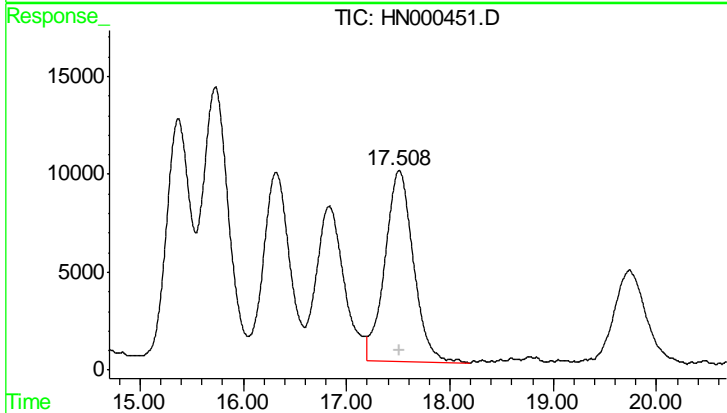


#12 Nitrobenzene
 R.T.: 11.993 min
 Delta R.T.: -0.002 min
 Response: 1264701
 Conc: 46.36 ug/L



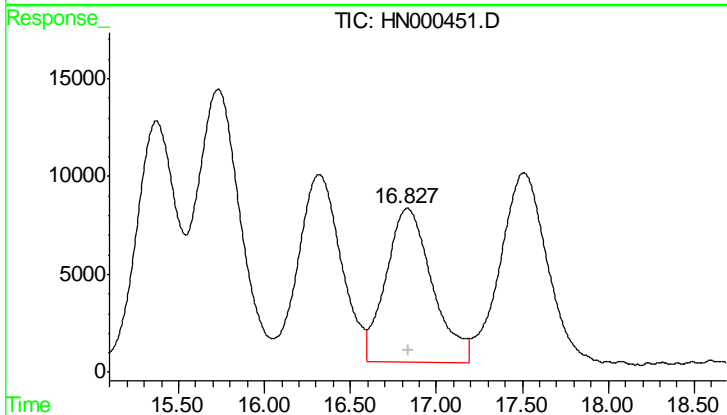
#13 2-Nitrotoluene

R.T.: 16.318 min
 Delta R.T.: 0.000 min
 Response: 1638223
 Conc: 94.29 ug/L



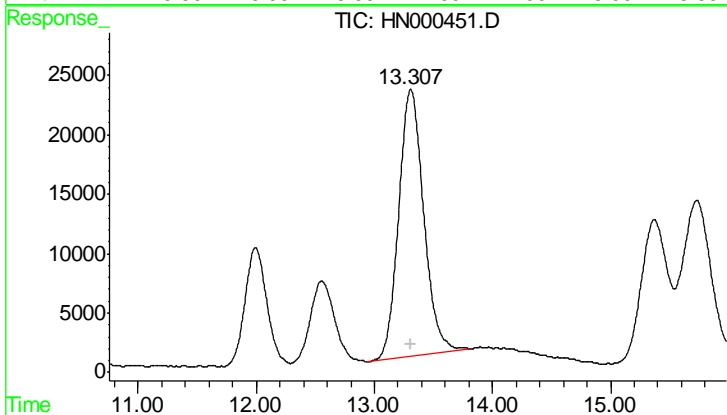
#14 3-Nitrotoluene

R.T.: 17.509 min
 Delta R.T.: 0.000 min
 Response: 1877001
 Conc: 97.18 ug/L



#15 4-Nitrotoluene

R.T.: 16.831 min
 Delta R.T.: -0.004 min
 Response: 1470230
 Conc: 97.55 ug/L



#16 3,5-Dinitroaniline

R.T.: 13.309 min
 Delta R.T.: 0.002 min
 Response: 3302470
 Conc: 93.42 ug/L