

Signal #1 : S:\HPCHEM1\HPLC_N\DATA\HN093014\HN006242.D\VWD1A.CH Vial:
 Signal #2 : S:\HPCHEM1\HPLC_N\DATA\HN093014\HN006242.D\VWD1A.CH
 Acq On : 30-Sep-2014, 12:18 Operator: HNP
 Sample : HSTDICC1000 Inst : G1314A
 Misc : Multiplr: 1.00
 IntFile Signal #1: autoint1.e IntFile Signal #2: autoint2.e
 Quant Time: Oct 1 5:56 2014 Quant Results File: HN093014.RES

Instrument :
 HPLC_N
 ClientSampleId :
 HSTDICC1000

Quant Method : Z:\HPCHEM1\HPLC_N\METHODS\HN093014.M
 Title :
 Last Update : Wed Oct 01 04:09:40 2014
 Response via : Initial Calibration
 DataAcq Meth : 8330AGIP.M

Volume Inj. : 50 ul
 Signal #1 Phase : ZORBAX Extend-C18 Signal #2 Phase:
 Signal #1 Info : 4.6 X 100mm 3.5-M Signal #2 Info :

Compound	R.T.	Response	Conc Units

System Monitoring Compounds			
1) S 4-Nitroaniline	1.08	3700064	606.956 ug/L
Target Compounds			
2) T HMX	0.50	2433000	275.808 ug/L
3) T RDX	2.16	4611060	384.541 ug/L
4) T 1,3,5-Trinitrobenzene	3.55	9201562	654.094 ug/L
5) T 1,3-Dinitrobenzene	4.77	13986308	648.901 ng/ml
6) T 3,5-Dinitroaniline	5.30	9887278	585.033 ug/L
7) T Nitrobenzene	6.49	9223079	697.966 ug/L
8) T Tetryl	9.60	14122894	1362.435 ug/L
9) T 2,4,6-Trinitrotoluene	10.39	8867929	671.392 ug/L
10) T 2-Amino-4,6-dinitrotoluene	11.11	5720084	425.689 ug/L
11) T 4-Amino-2,6-dinitrotoluene	12.07	12750911	1225.347 ug/L
12) T 2,4-Dinitrotoluene	12.79	7260942	385.174 ug/L
13) T 2,6-Dinitrotoluene	17.73	6406848	584.845 ug/L
14) T 2-Nitrotoluene	18.92	11897060	1229.970 ug/L
15) T 4-Nitrotoluene	20.82	17092842	1788.184 ug/L

 Analyst Signature: _____ Analyst Name: _____ Date: _____

-----REASONS FOR MANUAL INTEGRATIONS-----

___Poor resolution of peaks exhibited on chromatogram.Compound #: _____

___Peak Integrated by software incorrectly.Compound #: _____

___OTHER: _____Compound #: _____

(f)=RT Delta > 1/2 Window (m)=manual int.

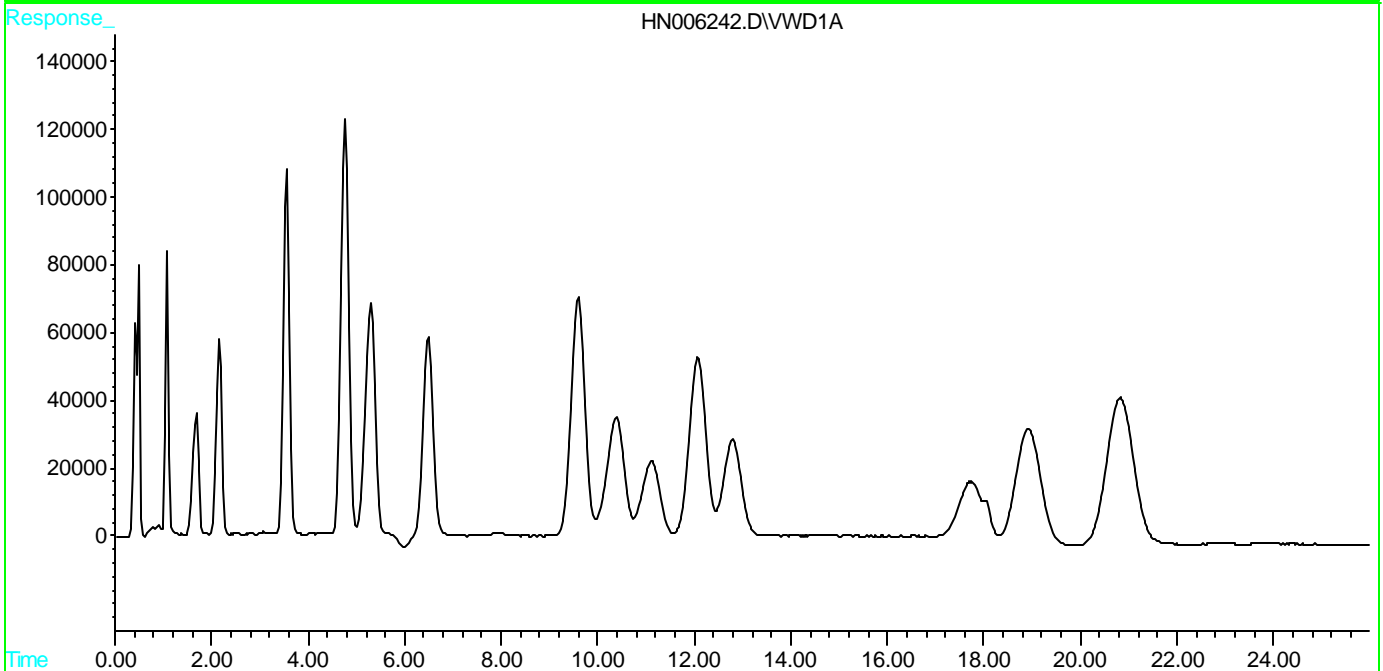
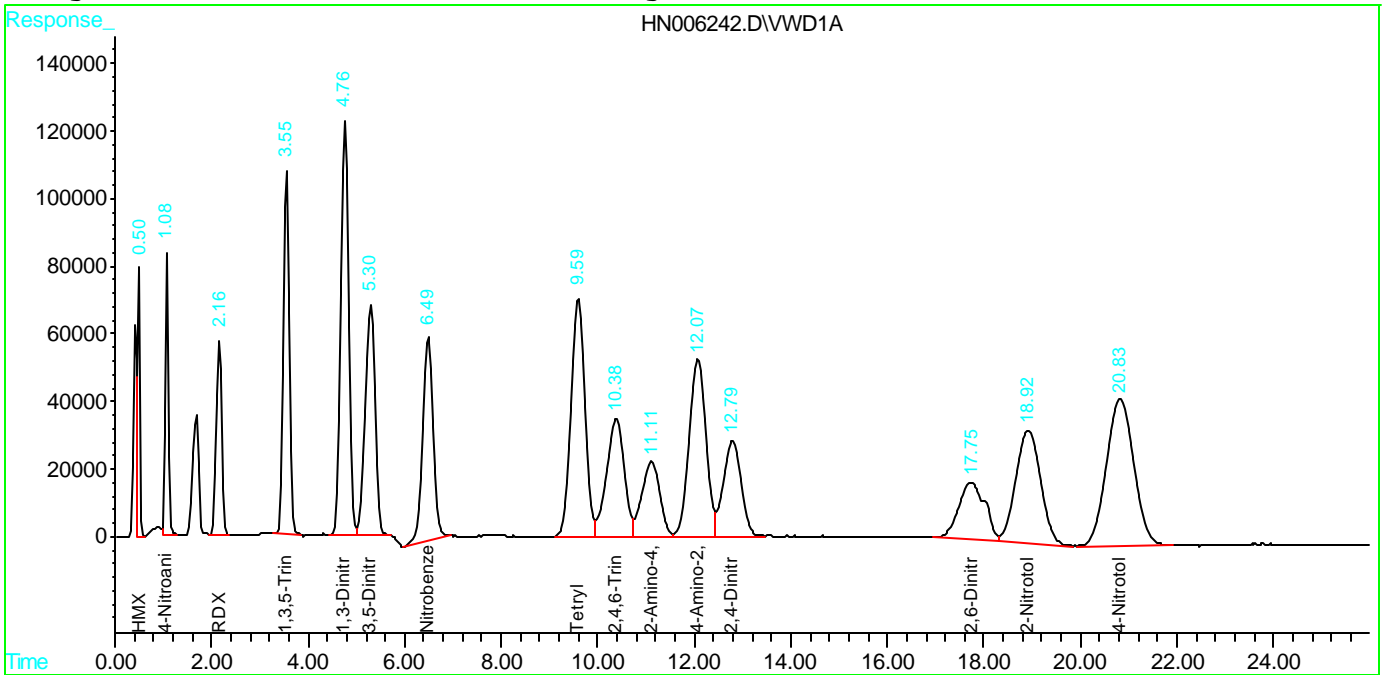
Quantitation Report

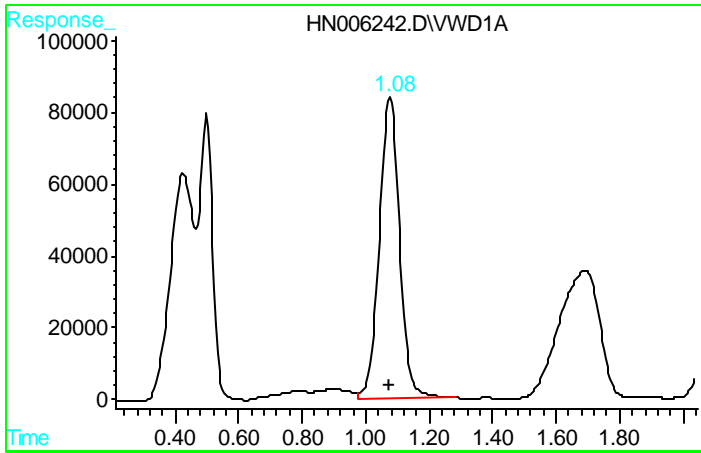
Signal #1 : S:\HPCHEM1\HPLC_N\DATA\HN093014\HN006242.D\VWD1A.CH Vial:
Signal #2 : S:\HPCHEM1\HPLC_N\DATA\HN093014\HN006242.D\VWD1A.CH
Acq On : 30-Sep-2014, 12:18 Operator: HNP
Sample : HSTDICC1000 Inst : G1314A
Misc : Multiplr: 1.00
IntFile Signal #1: autoint1.e IntFile Signal #2: autoint2.e
Quant Time: Oct 1 5:56 2014 Quant Results File: HN093014.RES

Instrument :
HPLC_N
ClientSampleId :
HSTDICC1000

Quant Method : Z:\HPCHEM1\HPLC_N\METHODS\HN093014.M
Title :
Last Update : Wed Oct 01 04:09:40 2014
Response via : Multiple Level Calibration
DataAcq Meth : 8330AGIP.M

Volume Inj. : 50 ul
Signal #1 Phase : ZORBAX Extend-C18 Signal #2 Phase:
Signal #1 Info : 4.6 X 100mm 3.5-M Signal #2 Info :

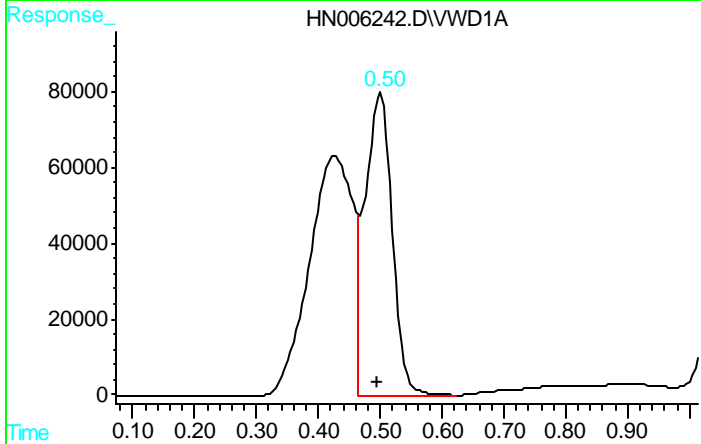




#1 4-Nitroaniline

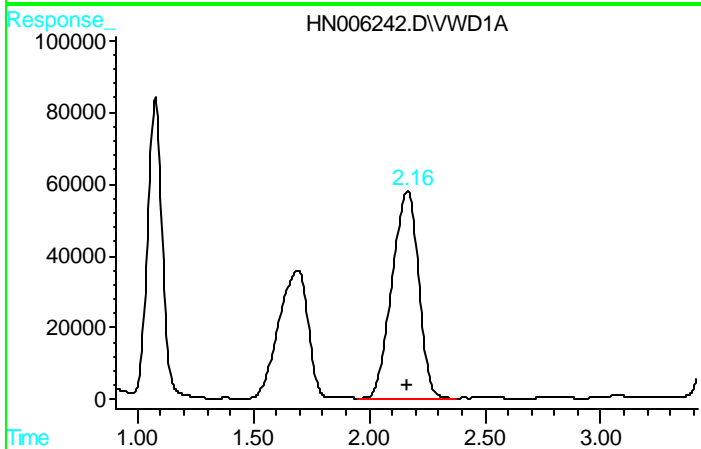
R.T.: 1.078 min
 Delta R.T.: 0.003 min
 Response: 3700064
 Conc: 606.96 ug/L

Instrument :
 HPLC_N
 ClientSampleId :
 HSTDICC1000



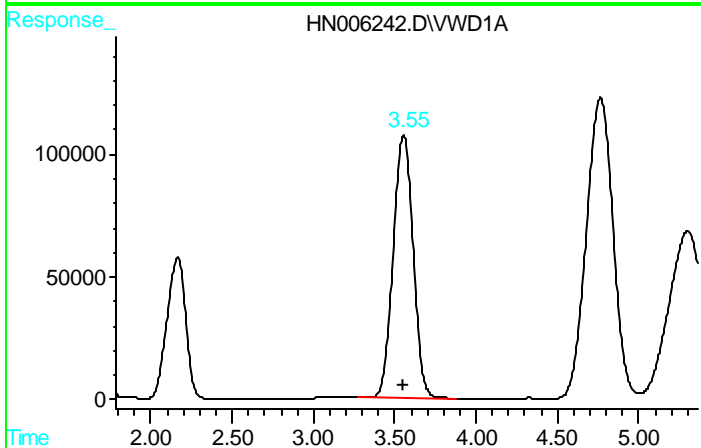
#2 HMX

R.T.: 0.500 min
 Delta R.T.: 0.004 min
 Response: 2433000
 Conc: 275.81 ug/L



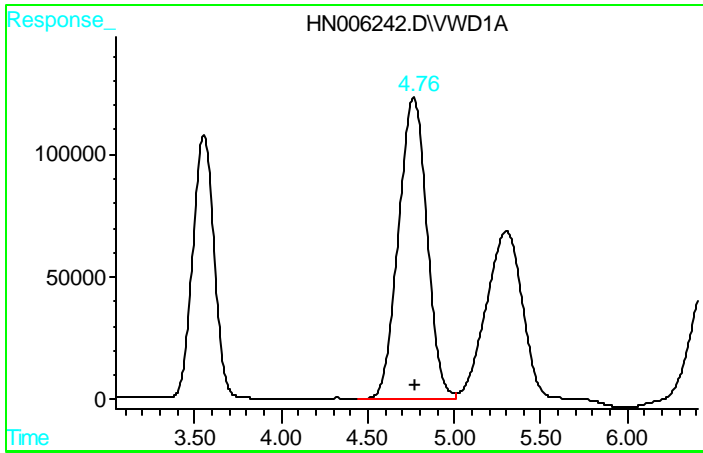
#3 RDX

R.T.: 2.165 min
 Delta R.T.: 0.004 min
 Response: 4611060
 Conc: 384.54 ug/L



#4 1,3,5-Trinitrobenzene

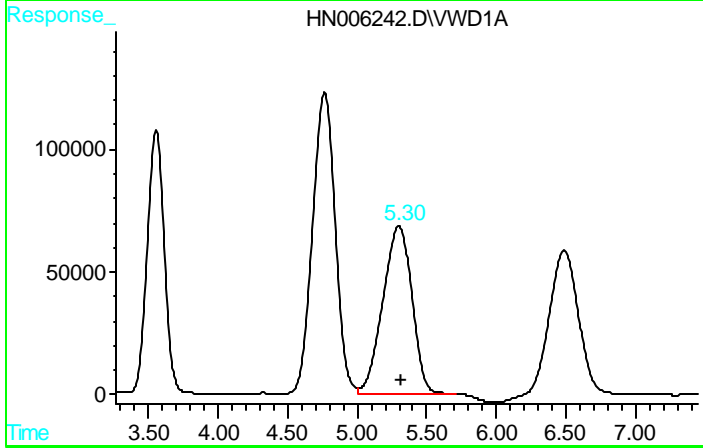
R.T.: 3.555 min
 Delta R.T.: -0.001 min
 Response: 9201562
 Conc: 654.09 ug/L



#5 1,3-Dinitrobenzene

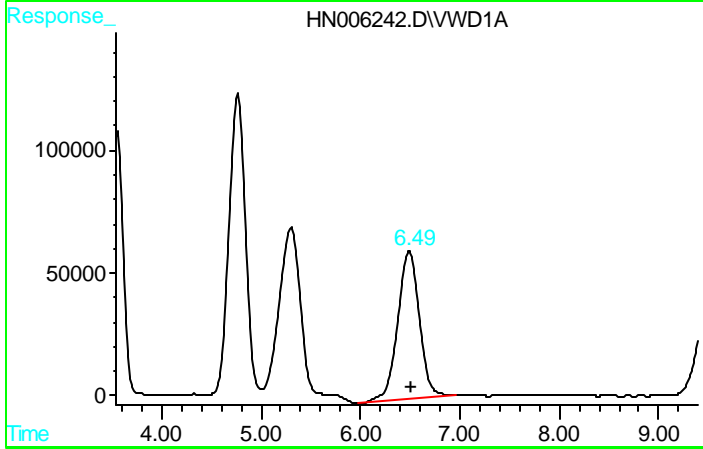
R.T.: 4.765 min
 Delta R.T.: -0.011 min
 Response: 13986308
 Conc: 648.90 ng/ml

Instrument :
 HPLC_N
 ClientSampleId :
 HSTDICC1000



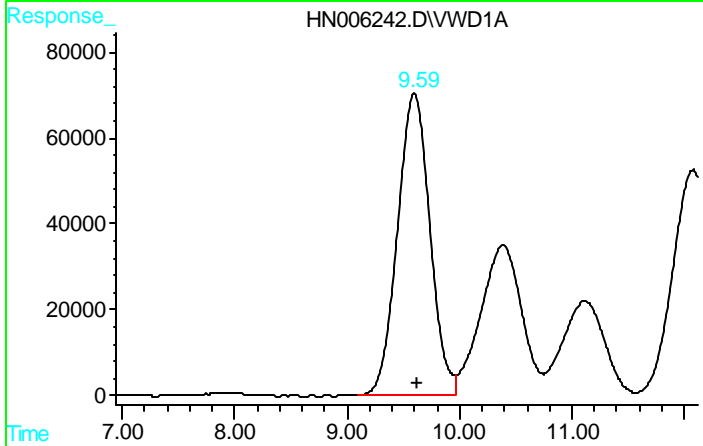
#6 3,5-Dinitroaniline

R.T.: 5.301 min
 Delta R.T.: -0.018 min
 Response: 9887278
 Conc: 585.03 ug/L



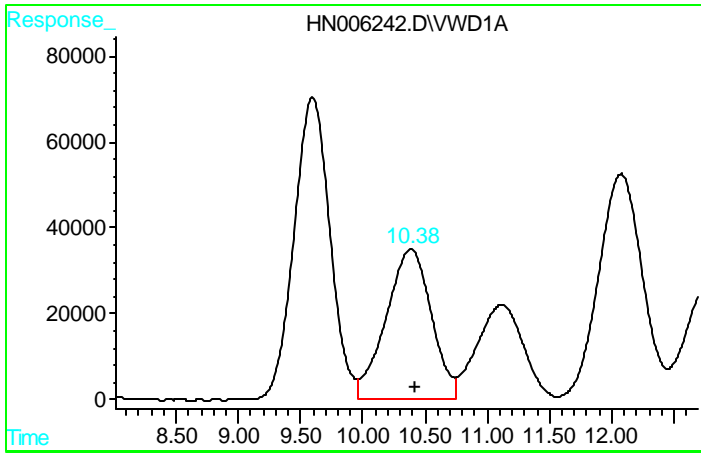
#7 Nitrobenzene

R.T.: 6.489 min
 Delta R.T.: -0.017 min
 Response: 9223079
 Conc: 697.97 ug/L



#8 Tetryl

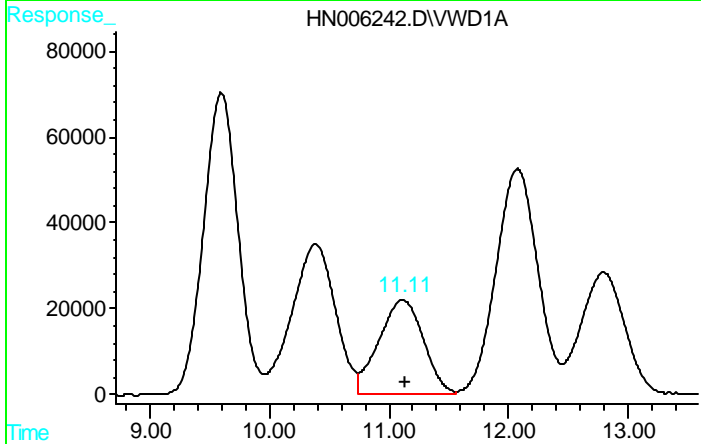
R.T.: 9.597 min
 Delta R.T.: -0.020 min
 Response: 14122894
 Conc: 1362.43 ug/L



#9 2,4,6-Trinitrotoluene

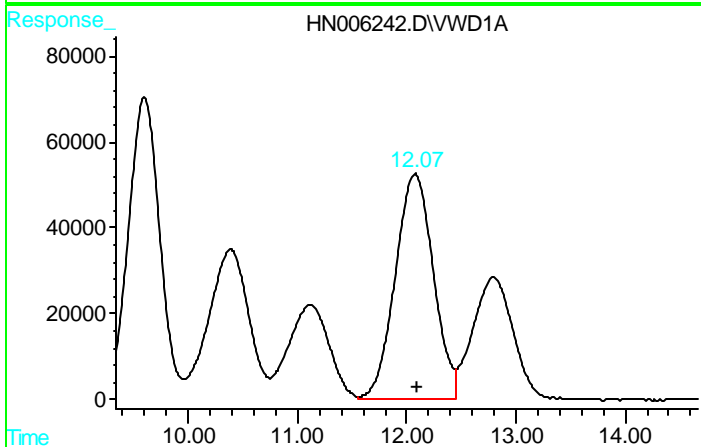
R.T.: 10.386 min
 Delta R.T.: -0.026 min
 Response: 8867929
 Conc: 671.39 ug/L

Instrument :
 HPLC_N
 ClientSampleId :
 HSTDICC1000



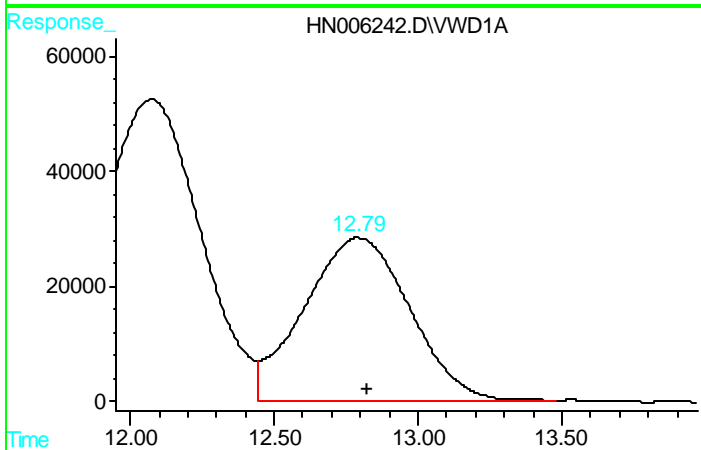
#10 2-Amino-4,6-dinitrotoluene

R.T.: 11.114 min
 Delta R.T.: -0.012 min
 Response: 5720084
 Conc: 425.69 ug/L



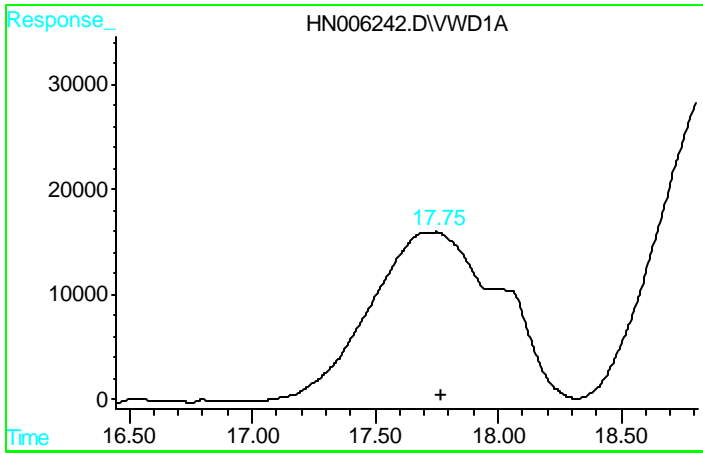
#11 4-Amino-2,6-dinitrotoluene

R.T.: 12.075 min
 Delta R.T.: -0.021 min
 Response: 12750911
 Conc: 1225.35 ug/L



#12 2,4-Dinitrotoluene

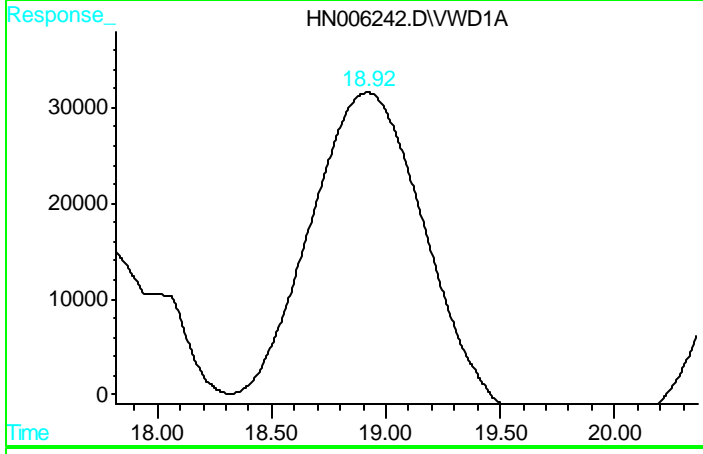
R.T.: 12.794 min
 Delta R.T.: -0.029 min
 Response: 7260942
 Conc: 385.17 ug/L



#13 2,6-Dinitrotoluene

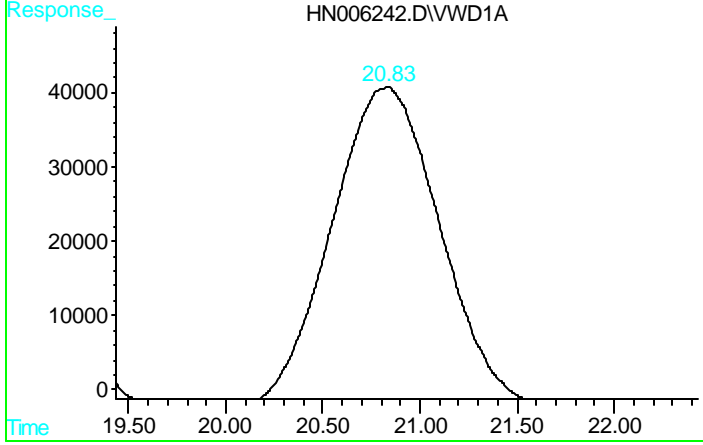
R.T.: 17.728 min
 Delta R.T.: -0.043 min
 Response: 6406848
 Conc: 584.85 ug/L

Instrument :
 HPLC_N
 ClientSampleId :
 HSTDICC1000



#14 2-Nitrotoluene

R.T.: 18.919 min
 Delta R.T.: -0.026 min
 Response: 11897060
 Conc: 1229.97 ug/L



#15 4-Nitrotoluene

R.T.: 20.824 min
 Delta R.T.: -0.036 min
 Response: 17092842
 Conc: 1788.18 ug/L