

Data Path : Z:\HPCHEM1\HPLC_N\Data\HN100515\
 Data File : HN007566.D
 Signal(s) : vwd1A.ch
 Acq On : 05-Oct-2015, 19:40
 Operator : UM/MA
 Sample : G3707-03
 Misc :
 ALS Vial : 17 Sample Multiplier: 1

Instrument :
 HPLC_N
 ClientSampleId :
 PB85927BL

Integration File: autoint1.e
 Quant Time: Oct 06 12:18:41 2015
 Quant Method : Z:\HPCHEM1\HPLC_N\Methods\HN100515.M
 Quant Title :
 QLast Update : Mon Oct 05 14:10:20 2015
 Response via : Initial Calibration
 Integrator: ChemStation

Volume Inj. : 50 ul
 Signal Phase : ZORBAX Extend-C18
 Signal Info : 4.6 X 100mm 3.5-Micron 80A

Compound	R.T.	Response	Conc Units

System Monitoring Compounds			
1) S 4-Nitroaniline	1.325	2154111	560.780 ug/L
Target Compounds			
2) T HMX	0.894	298371	60.660 ug/L
3) T RDX	1.709	295481	52.085 ug/L
4) T 1,3,5-Trinitrobenzene	2.643	543286	46.216 ug/L
5) T 1,3-Dinitrobenzene	3.516	863343	50.973 ng/ml
6) T 3,5-Dinitroaniline	3.914	701029	56.971 ug/L
7) T Nitrobenzene	4.686	532341	52.494 ug/L
9) T 2,4,6-Trinitrotoluene	6.469	801916	66.604 ug/L m
10) T 2-Amino-4,6-dinitroto...	7.066	803096	71.200 ug/L
11) T 4-Amino-2,6-dinitroto...	7.471f	440341	61.853 ug/L m
12) T 2,4-Dinitrotoluene	8.080	698949	45.689 ug/L m
13) T 2,6-Dinitrotoluene	8.454	616942	71.038 ug/L m
14) T 2-Nitrotoluene	11.584	353606	55.310 ug/L
15) T 4-Nitrotoluene	12.326	281523	52.334 ug/L
16) T 3-Nitrotoluene	13.565	359911	52.624 ug/L
17) T PETN	18.717f	494270	63.327 ug/L m

(f)=RT Delta > 1/2 Window

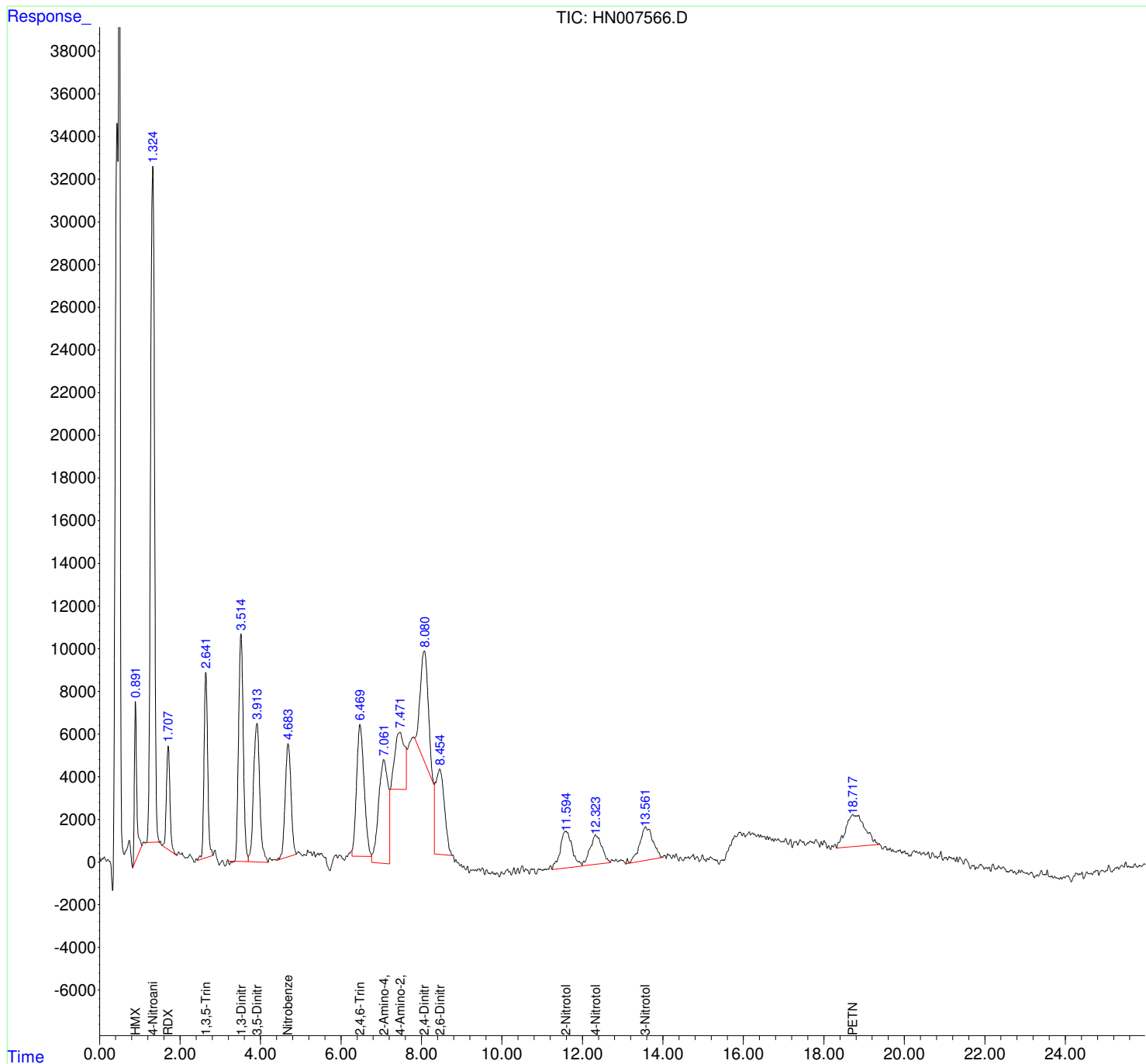
(m)=manual int.

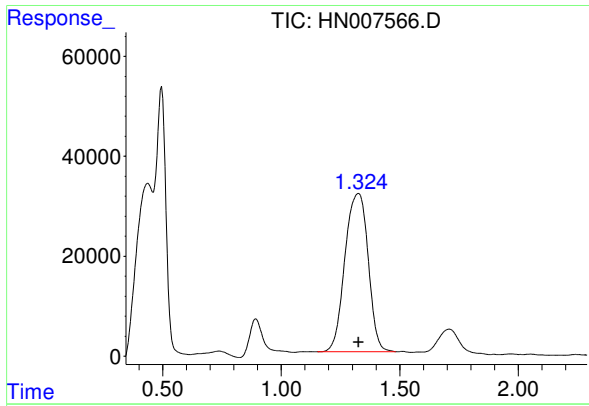
Data Path : Z:\HPCHEM1\HPLC_N\Data\HN100515\
 Data File : HN007566.D
 Signal(s) : vwd1A.ch
 Acq On : 05-Oct-2015, 19:40
 Operator : UM/MA
 Sample : G3707-03
 Misc :
 ALS Vial : 17 Sample Multiplier: 1

Instrument :
 HPLC_N
 ClientSampled :
 PB85927BL

Integration File: autoint1.e
 Quant Time: Oct 06 12:18:41 2015
 Quant Method : Z:\HPCHEM1\HPLC_N\Methods\HN100515.M
 Quant Title :
 QLast Update : Mon Oct 05 14:10:20 2015
 Response via : Initial Calibration
 Integrator: ChemStation

Volume Inj. : 50 ul
 Signal Phase : ZORBAX Extend-C18
 Signal Info : 4.6 X 100mm 3.5-Micron 80A

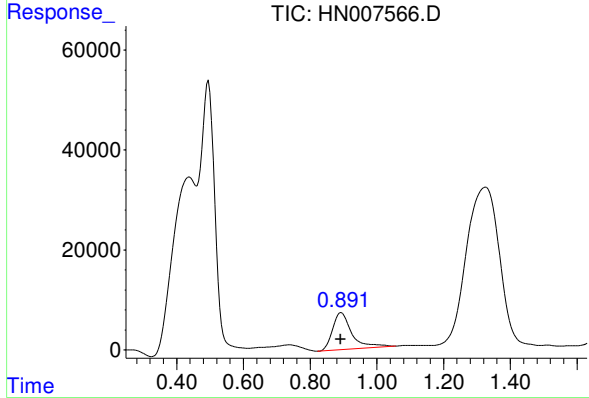




#1 4-Nitroaniline

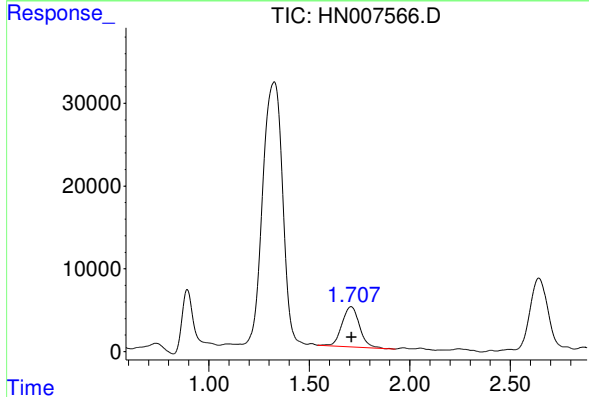
R.T.: 1.325 min
 Delta R.T.: 0.000 min
 Response: 2154111
 Conc: 560.78 ug/L

Instrument :
 HPLC_N
 ClientSampled :
 PB85927BL



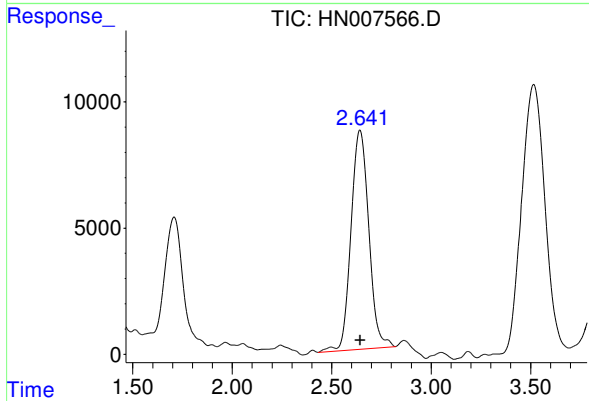
#2 HMX

R.T.: 0.894 min
 Delta R.T.: 0.002 min
 Response: 298371
 Conc: 60.66 ug/L



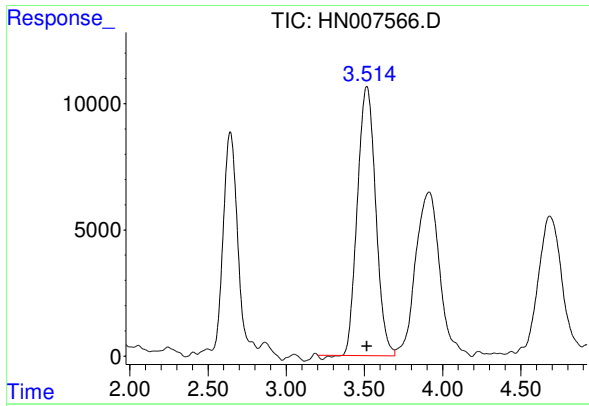
#3 RDX

R.T.: 1.709 min
 Delta R.T.: -0.002 min
 Response: 295481
 Conc: 52.09 ug/L



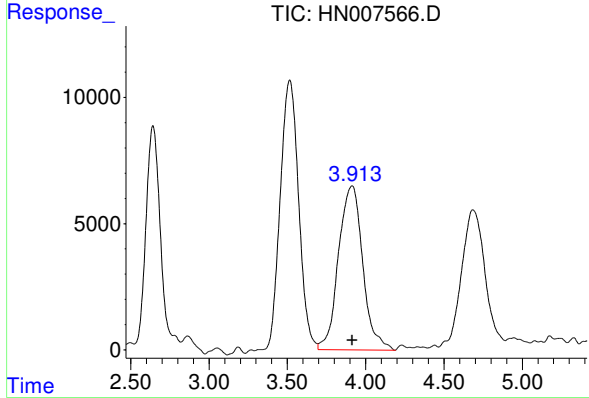
#4 1,3,5-Trinitrobenzene

R.T.: 2.643 min
 Delta R.T.: 0.000 min
 Response: 543286
 Conc: 46.22 ug/L

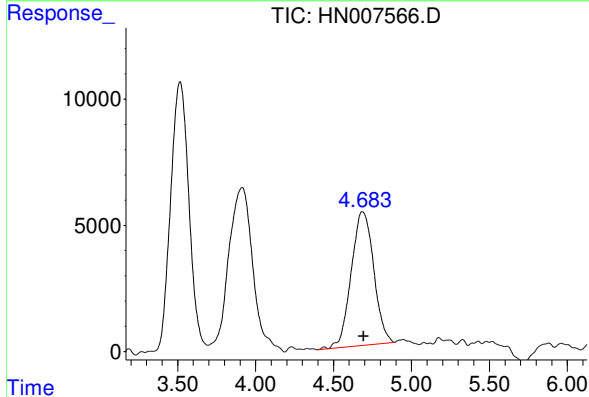


#5 1,3-Dinitrobenzene
 R.T.: 3.516 min
 Delta R.T.: -0.001 min
 Response: 863343
 Conc: 50.97 ng/ml

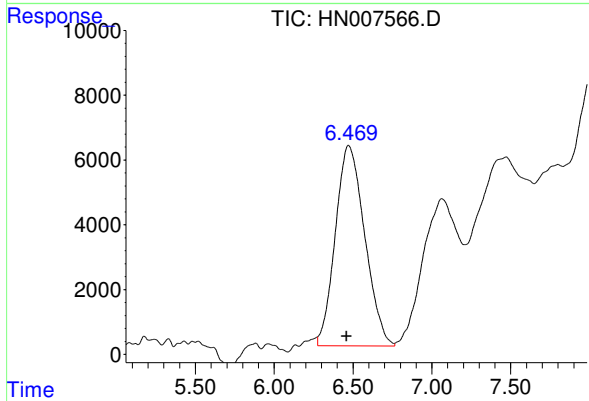
Instrument :
 HPLC_N
 ClientSampled :
 PB85927BL



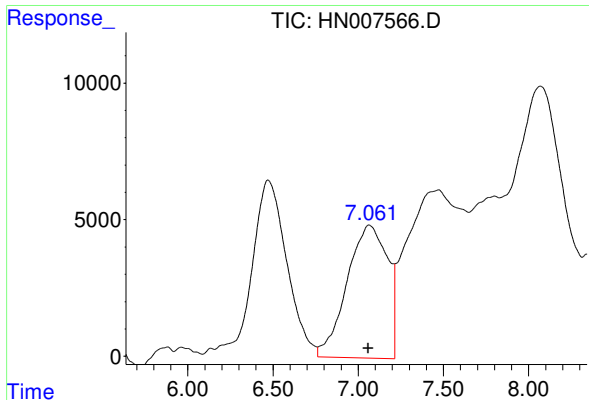
#6 3,5-Dinitroaniline
 R.T.: 3.914 min
 Delta R.T.: 0.000 min
 Response: 701029
 Conc: 56.97 ug/L



#7 Nitrobenzene
 R.T.: 4.686 min
 Delta R.T.: -0.006 min
 Response: 532341
 Conc: 52.49 ug/L



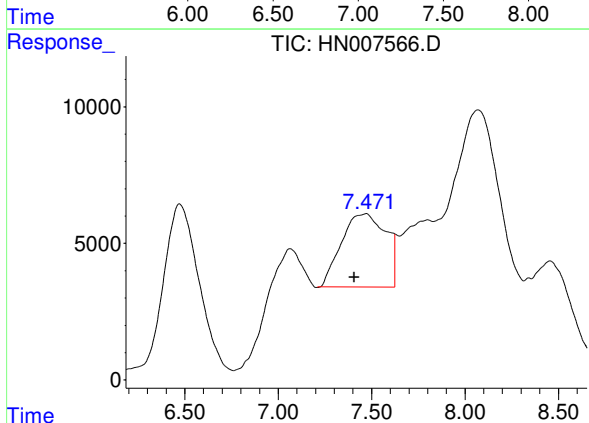
#9 2,4,6-Trinitrotoluene
 R.T.: 6.469 min
 Delta R.T.: 0.012 min
 Response: 801916
 Conc: 66.60 ug/L m



#10 2-Amino-4,6-dinitrotoluene

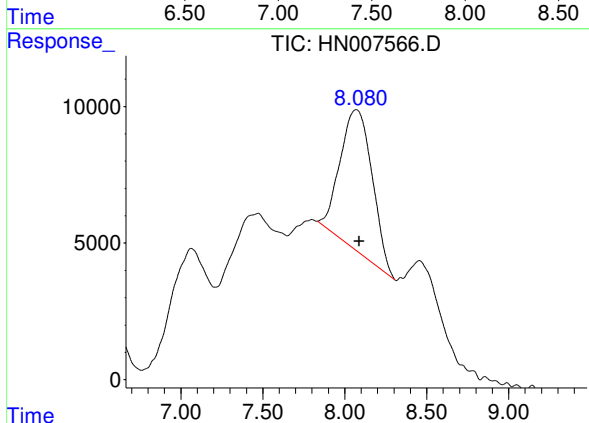
R.T.: 7.066 min
 Delta R.T.: 0.008 min
 Response: 803096
 Conc: 71.20 ug/L

Instrument :
 HPLC_N
 ClientSampled :
 PB85927BL



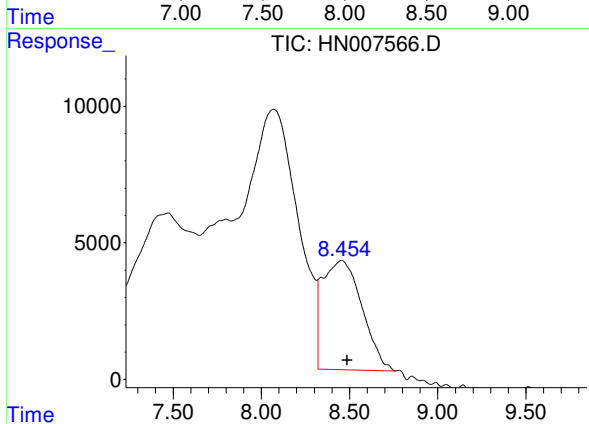
#11 4-Amino-2,6-dinitrotoluene

R.T.: 7.471 min
 Delta R.T.: 0.064 min
 Response: 440341
 Conc: 61.85 ug/L m



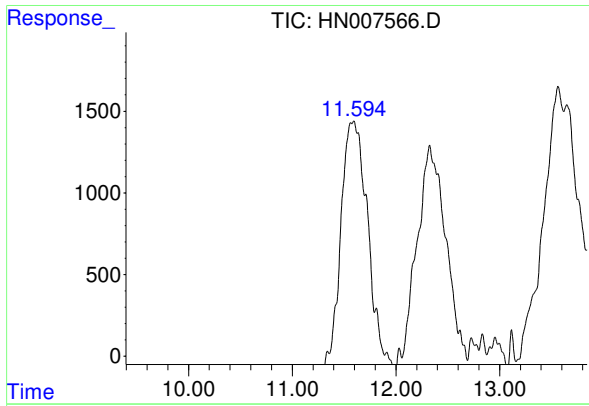
#12 2,4-Dinitrotoluene

R.T.: 8.080 min
 Delta R.T.: -0.009 min
 Response: 698949
 Conc: 45.69 ug/L m



#13 2,6-Dinitrotoluene

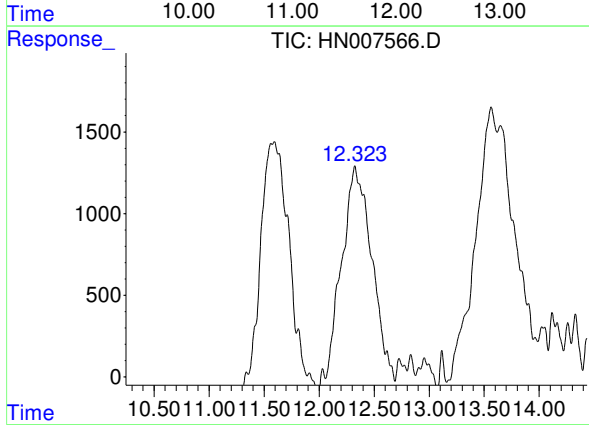
R.T.: 8.454 min
 Delta R.T.: -0.031 min
 Response: 616942
 Conc: 71.04 ug/L m



#14 2-Nitrotoluene

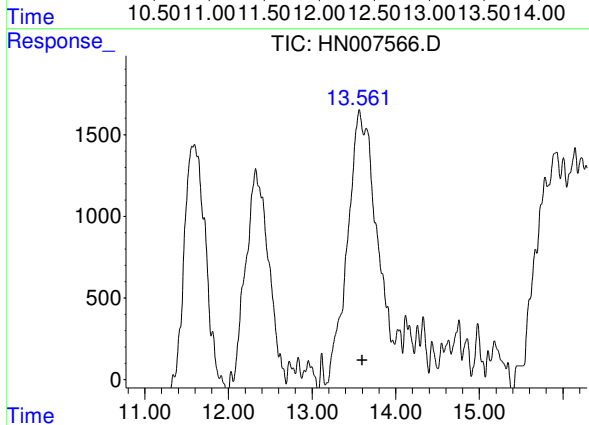
R.T.: 11.584 min
 Delta R.T.: -0.016 min
 Response: 353606
 Conc: 55.31 ug/L

Instrument :
 HPLC_N
 ClientSampled :
 PB85927BL



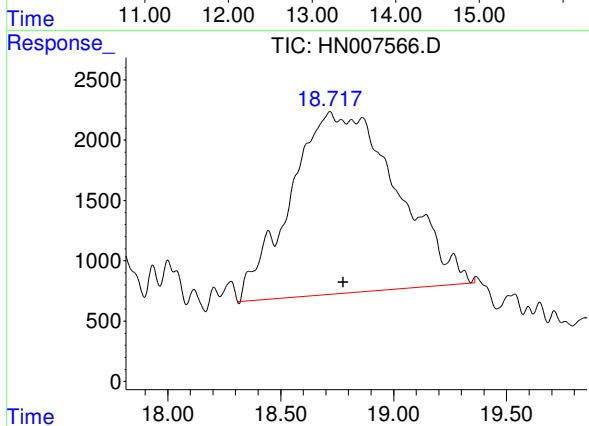
#15 4-Nitrotoluene

R.T.: 12.326 min
 Delta R.T.: -0.016 min
 Response: 281523
 Conc: 52.33 ug/L



#16 3-Nitrotoluene

R.T.: 13.565 min
 Delta R.T.: -0.032 min
 Response: 359911
 Conc: 52.62 ug/L



#17 PETN

R.T.: 18.717 min
 Delta R.T.: -0.060 min
 Response: 494270
 Conc: 63.33 ug/L m