

Data Path : Z:\HPCHEM1\HPLC\_N\Data\HN101614\  
 Data File : HN006399.D  
 Signal(s) : Signal #1: VWD1A.CH Signal #2: VWD1A.CH  
 Acq On : 16-Oct-2014, 23:53  
 Operator : HNP  
 Sample : F4269-04  
 Misc :  
 ALS Vial : 33 Sample Multiplier: 1

Instrument :  
 HPLC\_N  
 ClientSampleId :  
 YS19-GW01-1014

Integration File signal 1: autoint1.e  
 Integration File signal 2: autoint2.e  
 Quant Time: Mar 05 16:42:14 2015  
 Quant Method : Z:\HPCHEM1\HPLC\_N\METHODS\HN1016NG.M  
 Quant Title :  
 QLast Update : Fri Oct 17 04:15:53 2014  
 Response via : Initial Calibration  
 Integrator: ChemStation

Volume Inj. : 50 ul  
 Signal #1 Phase : ZORBAX Extend-C18 Signal #2 Phase:  
 Signal #1 Info : 4.6 X 100mm 3.5-M Signal #2 Info :

Compound	R.T.	Response	Conc Units
-----			
System Monitoring Compounds			
1) S 4-Nitroaniline	1.300	1200776	0.302 ng/ul
Target Compounds			
-----			

(f)=RT Delta > 1/2 Window

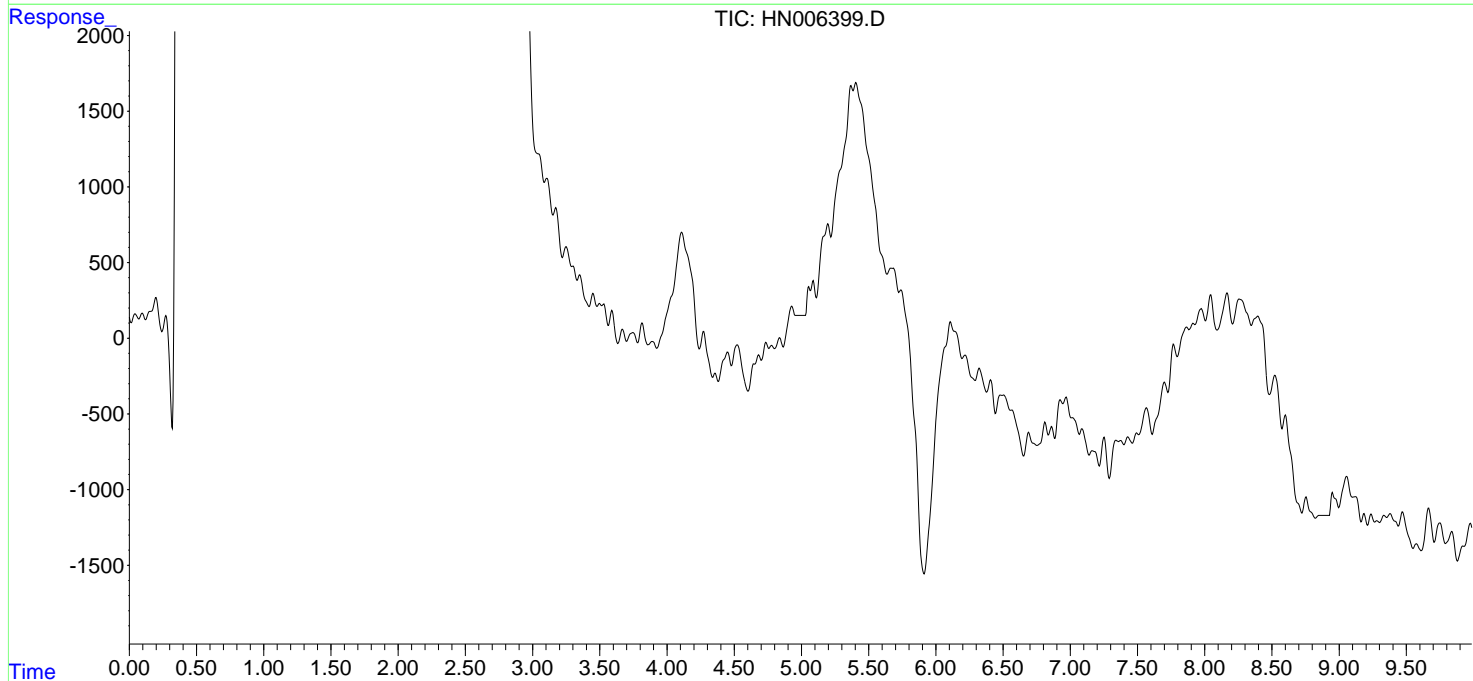
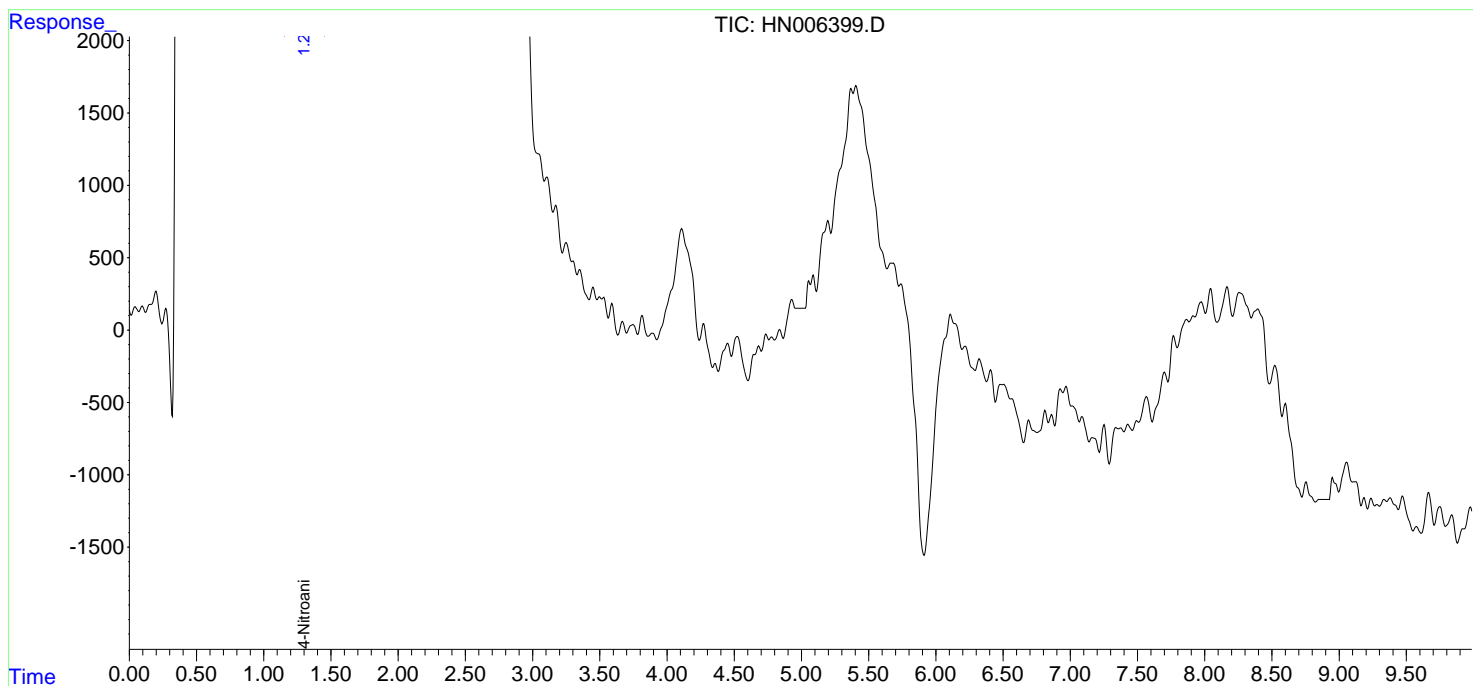
(m)=manual int.

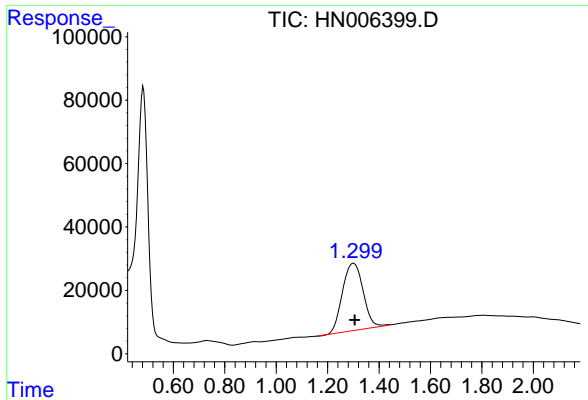
Data Path : Z:\HPCHEM1\HPLC\_N\Data\HN101614\  
 Data File : HN006399.D  
 Signal(s) : Signal #1: VWD1A.CH Signal #2: VWD1A.CH  
 Acq On : 16-Oct-2014, 23:53  
 Operator : HNP  
 Sample : F4269-04  
 Misc :  
 ALS Vial : 33 Sample Multiplier: 1

Instrument :  
 HPLC\_N  
 ClientSampleId :  
 YS19-GW01-1014

Integration File signal 1: autoint1.e  
 Integration File signal 2: autoint2.e  
 Quant Time: Mar 05 16:42:14 2015  
 Quant Method : Z:\HPCHEM1\HPLC\_N\METHODS\HN1016NG.M  
 Quant Title :  
 QLast Update : Fri Oct 17 04:15:53 2014  
 Response via : Initial Calibration  
 Integrator: ChemStation

Volume Inj. : 50 ul  
 Signal #1 Phase : ZORBAX Extend-C18 Signal #2 Phase:  
 Signal #1 Info : 4.6 X 100mm 3.5-M Signal #2 Info :





#1 4-Nitroaniline

R.T.: 1.300 min  
Delta R.T.: -0.005 min  
Response: 1200776  
Conc: 0.30 ng/u1

Instrument :  
HPLC\_N  
ClientSampleId :  
YS19-GW01-1014