

Data Path : Z:\HPCHEM1\HPLC\_N\Data\HN102714\  
 Data File : HN006684.D  
 Signal(s) : Signal #1: VWD1A.CH Signal #2: VWD1A.CH  
 Acq On : 27-Oct-2014, 22:59  
 Operator : TP  
 Sample : F4351-15MSD  
 Misc :  
 ALS Vial : 18 Sample Multiplier: 1

Instrument :  
 HPLC\_N  
 ClientSampleId :  
 YS19-SW10-1014MSD

Integration File signal 1: autoint1.e  
 Integration File signal 2: autoint2.e  
 Quant Time: Mar 06 12:26:21 2015  
 Quant Method : Z:\HPCHEM1\HPLC\_N\METHODS\HN100214.M  
 Quant Title :  
 QLast Update : Fri Mar 06 12:16:49 2015  
 Response via : Initial Calibration  
 Integrator: ChemStation

Volume Inj. : 50 ul  
 Signal #1 Phase : ZORBAX Extend-C18 Signal #2 Phase:  
 Signal #1 Info : 4.6 X 100mm 3.5-M Signal #2 Info :

Compound	R.T.	Response	Conc Units
System Monitoring Compounds			
1) S 4-Nitroaniline	1.313	1117479	327.976 ug/L
Target Compounds			
2) T HMX	0.879	984192	218.322 ug/L
3) T RDX	1.704	1315972	251.000 ug/L
4) T 1,3,5-Trinitrobenzene	2.689	2649571	246.804 ug/L
5) T 1,3-Dinitrobenzene	3.564	4009626	245.769 ng/ml
6) T 3,5-Dinitroaniline	3.923	3354359	288.502 ug/L
7) T Nitrobenzene	4.818	2487943	247.047 ug/L
8) T Tetryl	6.354	1333783	205.881 ug/L
9) T 2,4,6-Trinitrotoluene	6.628	2860228	260.755 ug/L
10) T 2-Amino-4,6-dinitroto...	7.137	2643626	229.638 ug/L
11) T 4-Amino-2,6-dinitroto...	7.501	1583732	258.677 ug/L
12) T 2,4-Dinitrotoluene	8.300	3772382	244.683 ug/L
13) T 2,6-Dinitrotoluene	8.719	1946070	233.656 ug/L
14) T 2-Nitrotoluene	12.073	1407381	214.286 ug/L
15) T 4-Nitrotoluene	12.837	1040501	194.229 ug/L
16) T 3-Nitrotoluene	14.163	1650465	238.987 ug/L
17) T PETN	19.392	1856508	248.824 ug/L

(f)=RT Delta > 1/2 Window

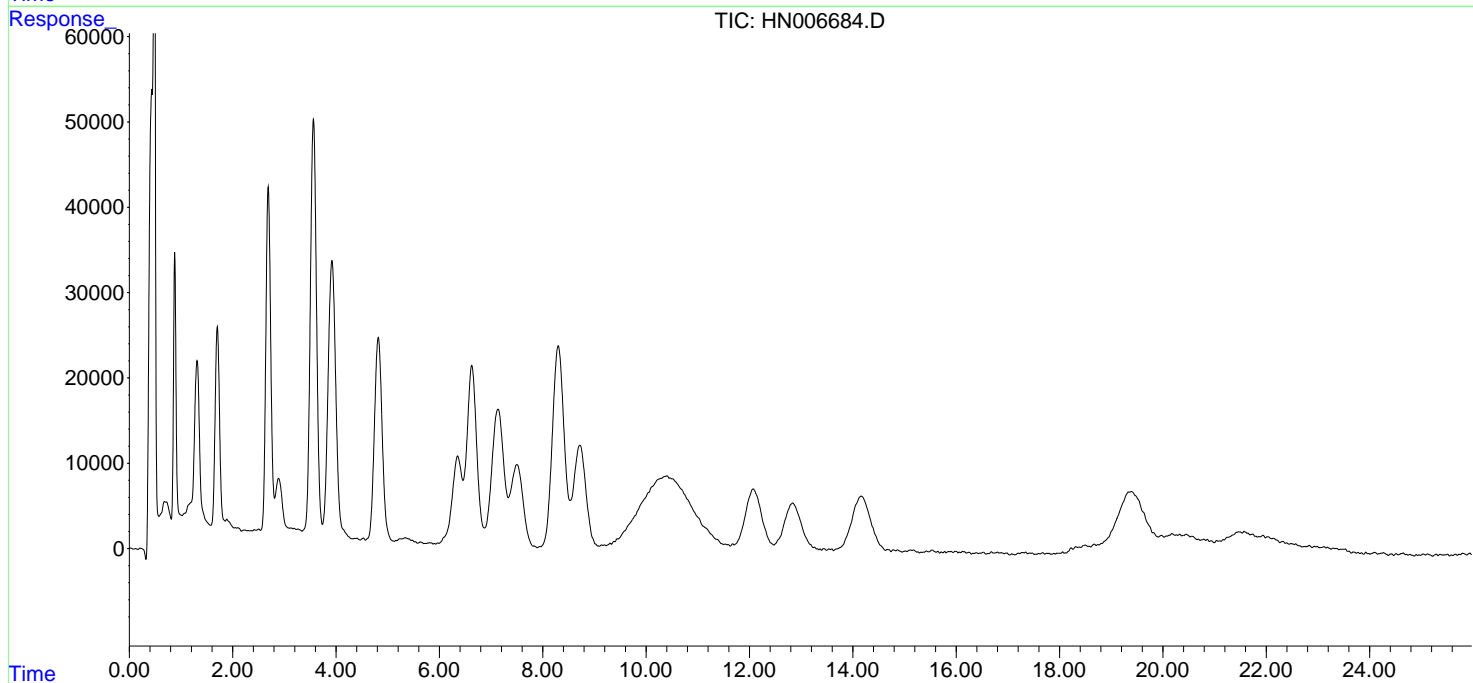
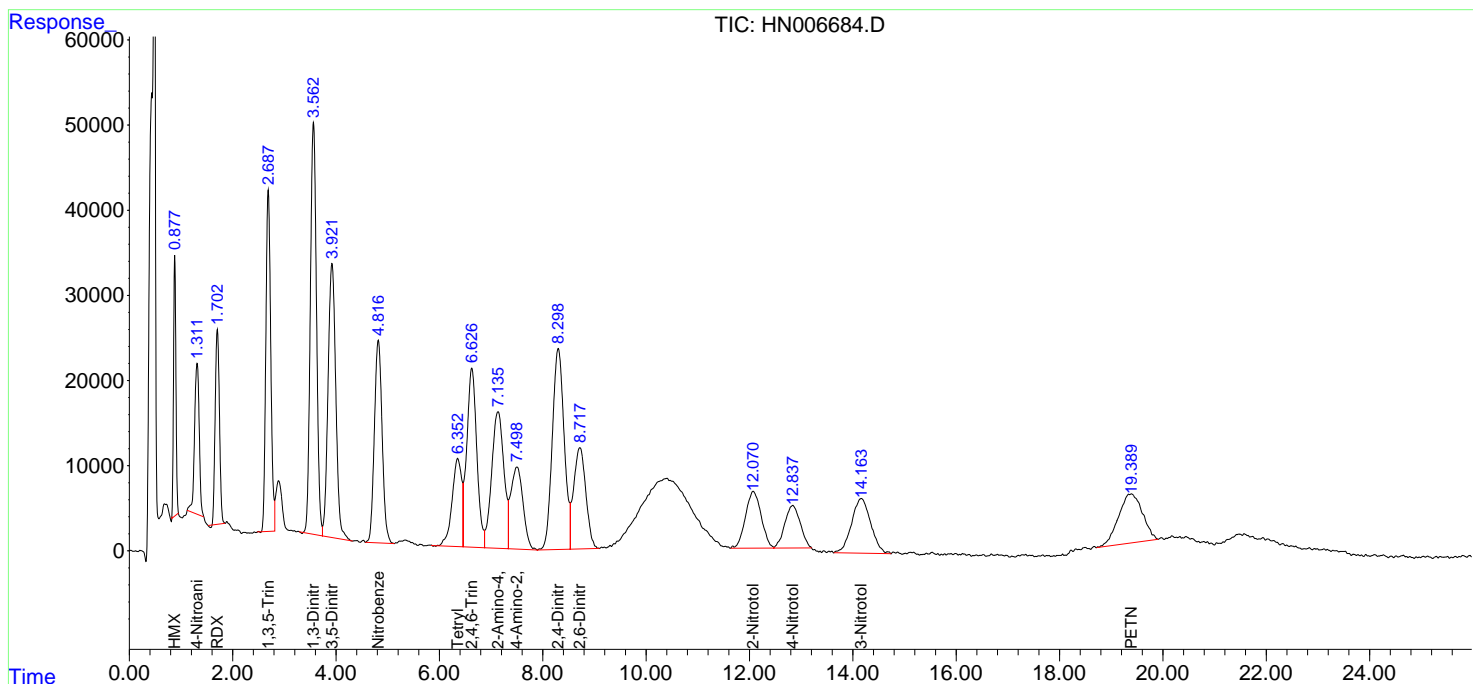
(m)=manual int.

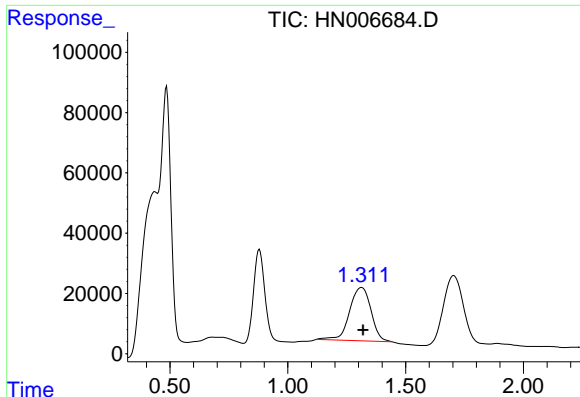
Data Path : Z:\HPCHEM1\HPLC\_N\Data\HN102714\  
 Data File : HN006684.D  
 Signal(s) : Signal #1: VWD1A.CH Signal #2: VWD1A.CH  
 Acq On : 27-Oct-2014, 22:59  
 Operator : TP  
 Sample : F4351-15MSD  
 Misc :  
 ALS Vial : 18 Sample Multiplier: 1

**Instrument :**  
 HPLC\_N  
**ClientSampleID :**  
 YS19-SW10-1014MSD

Integration File signal 1: autoint1.e  
 Integration File signal 2: autoint2.e  
 Quant Time: Mar 06 12:26:21 2015  
 Quant Method : Z:\HPCHEM1\HPLC\_N\METHODS\HN100214.M  
 Quant Title :  
 QLast Update : Fri Mar 06 12:16:49 2015  
 Response via : Initial Calibration  
 Integrator: ChemStation

Volume Inj. : 50 ul  
 Signal #1 Phase : ZORBAX Extend-C18 Signal #2 Phase:  
 Signal #1 Info : 4.6 X 100mm 3.5-M Signal #2 Info :

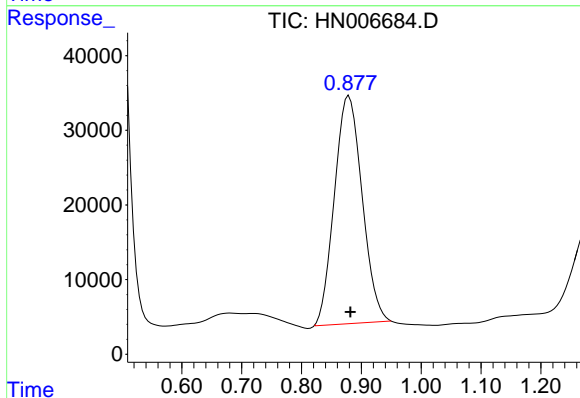




#1 4-Nitroaniline

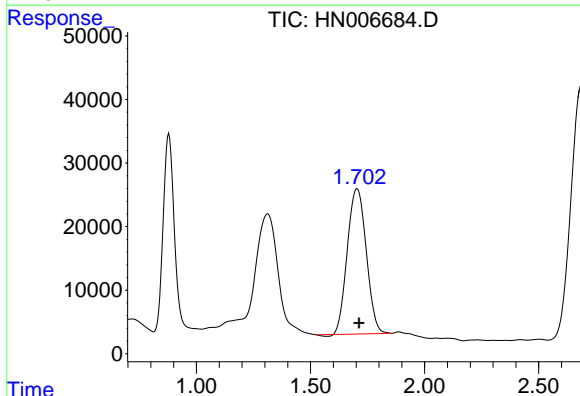
R.T.: 1.313 min  
 Delta R.T.: -0.006 min  
 Response: 1117479  
 Conc: 327.98 ug/L

Instrument :  
 HPLC\_N  
 ClientSampleId :  
 YS19-SW10-1014MSD



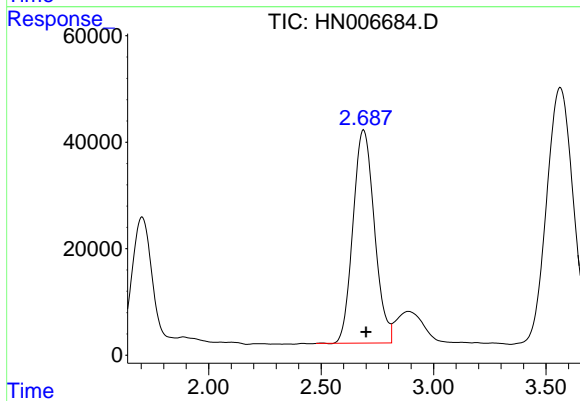
#2 HMX

R.T.: 0.879 min  
 Delta R.T.: -0.002 min  
 Response: 984192  
 Conc: 218.32 ug/L



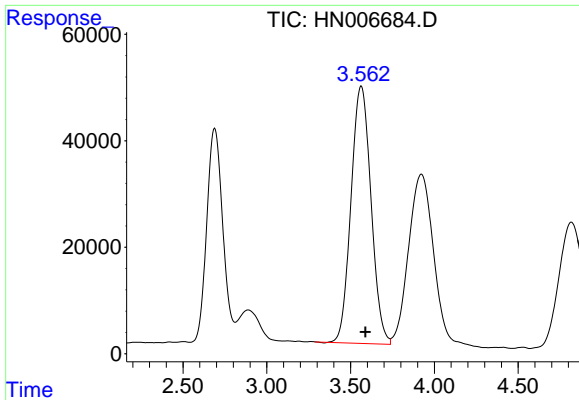
#3 RDX

R.T.: 1.704 min  
 Delta R.T.: -0.008 min  
 Response: 1315972  
 Conc: 251.00 ug/L



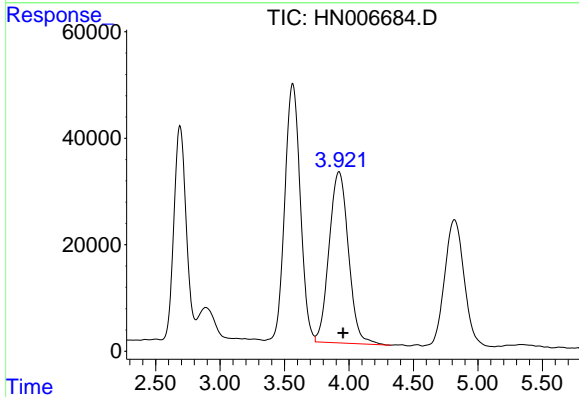
#4 1,3,5-Trinitrobenzene

R.T.: 2.689 min  
 Delta R.T.: -0.010 min  
 Response: 2649571  
 Conc: 246.80 ug/L

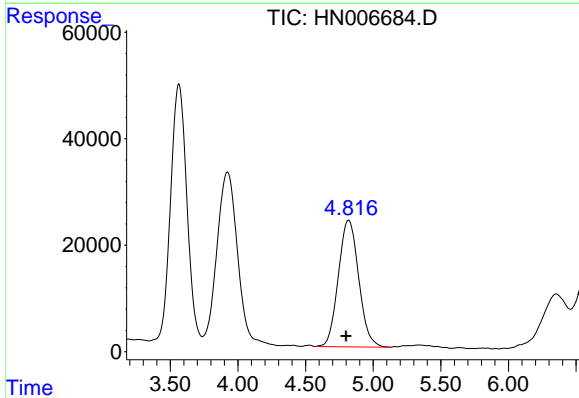


#5 1,3-Dinitrobenzene  
 R.T.: 3.564 min  
 Delta R.T.: -0.025 min  
 Response: 4009626  
 Conc: 245.77 ng/ml

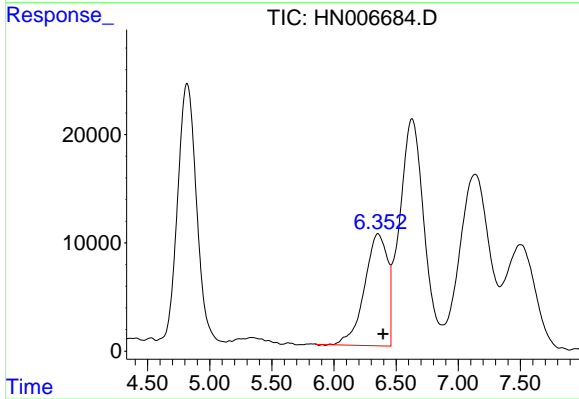
Instrument :  
 HPLC\_N  
 ClientSampleId :  
 YS19-SW10-1014MSD



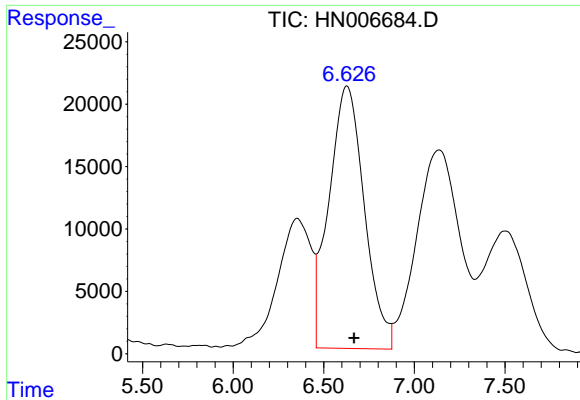
#6 3,5-Dinitroaniline  
 R.T.: 3.923 min  
 Delta R.T.: -0.032 min  
 Response: 3354359  
 Conc: 288.50 ug/L



#7 Nitrobenzene  
 R.T.: 4.818 min  
 Delta R.T.: 0.018 min  
 Response: 2487943  
 Conc: 247.05 ug/L



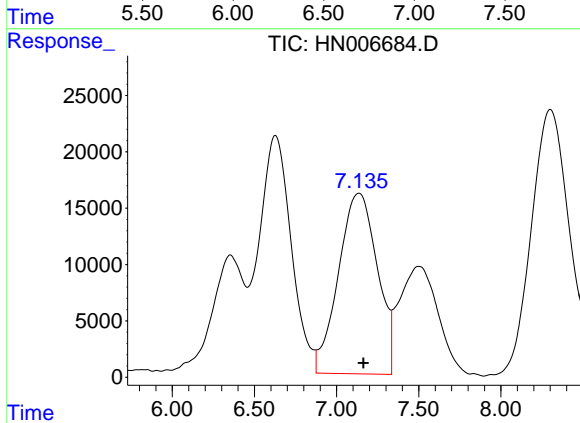
#8 Tetryl  
 R.T.: 6.354 min  
 Delta R.T.: -0.042 min  
 Response: 1333783  
 Conc: 205.88 ug/L



#9 2,4,6-Trinitrotoluene

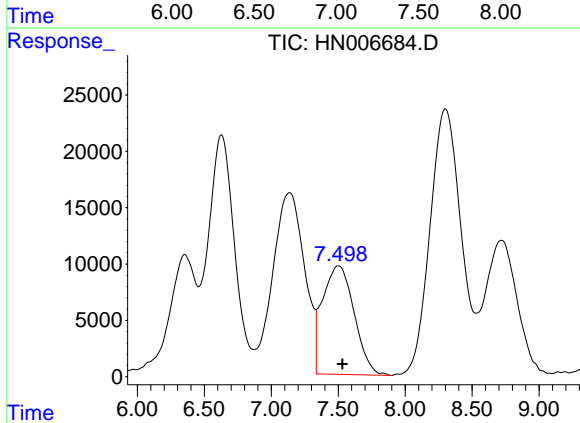
R.T.: 6.628 min  
 Delta R.T.: -0.040 min  
 Response: 2860228  
 Conc: 260.75 ug/L

Instrument :  
 HPLC\_N  
 ClientSampleId :  
 YS19-SW10-1014MSD



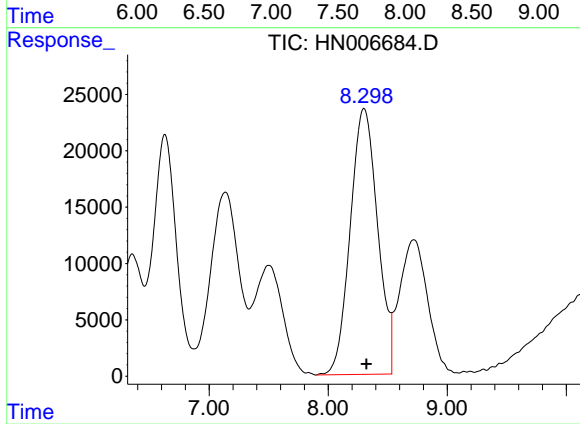
#10 2-Amino-4,6-dinitrotoluene

R.T.: 7.137 min  
 Delta R.T.: -0.027 min  
 Response: 2643626  
 Conc: 229.64 ug/L



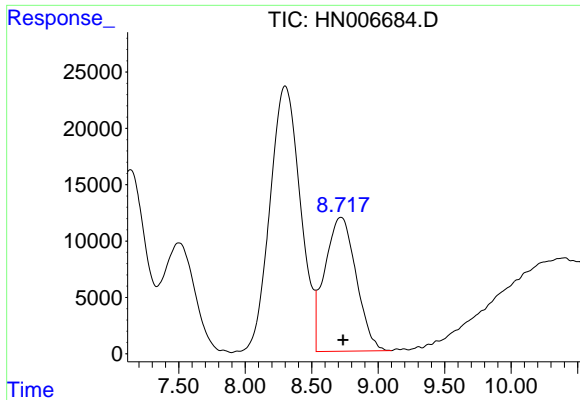
#11 4-Amino-2,6-dinitrotoluene

R.T.: 7.501 min  
 Delta R.T.: -0.030 min  
 Response: 1583732  
 Conc: 258.68 ug/L



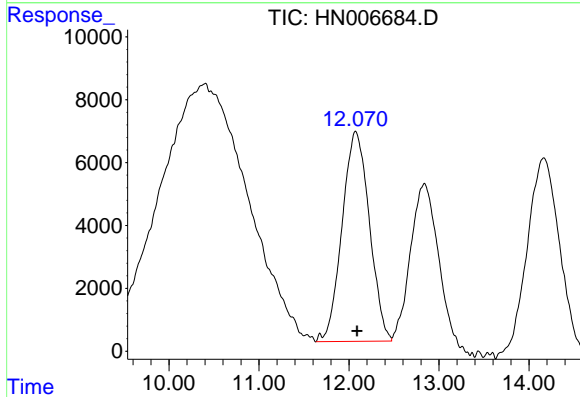
#12 2,4-Dinitrotoluene

R.T.: 8.300 min  
 Delta R.T.: -0.022 min  
 Response: 3772382  
 Conc: 244.68 ug/L

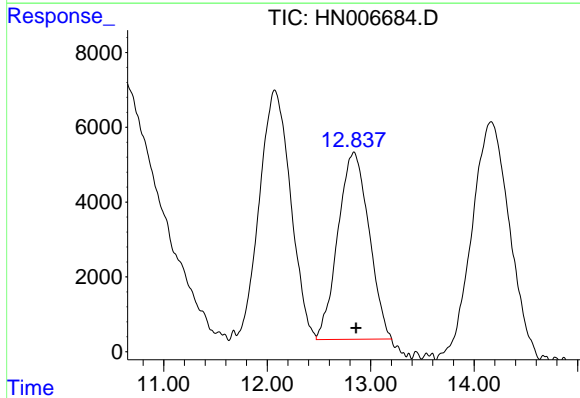


#13 2,6-Dinitrotoluene  
 R.T.: 8.719 min  
 Delta R.T.: -0.018 min  
 Response: 1946070  
 Conc: 233.66 ug/L

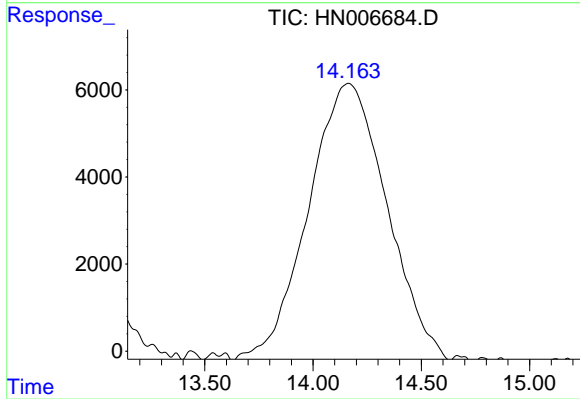
Instrument :  
 HPLC\_N  
 ClientSampleId :  
 YS19-SW10-1014MSD



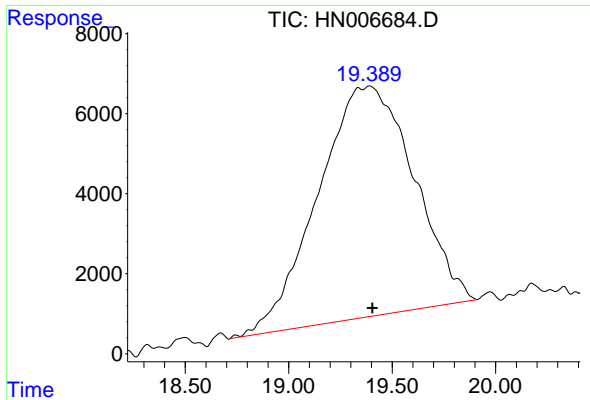
#14 2-Nitrotoluene  
 R.T.: 12.073 min  
 Delta R.T.: -0.020 min  
 Response: 1407381  
 Conc: 214.29 ug/L



#15 4-Nitrotoluene  
 R.T.: 12.837 min  
 Delta R.T.: -0.021 min  
 Response: 1040501  
 Conc: 194.23 ug/L



#16 3-Nitrotoluene  
 R.T.: 14.163 min  
 Delta R.T.: -0.020 min  
 Response: 1650465  
 Conc: 238.99 ug/L



#17 PETN

R.T.: 19.392 min  
Delta R.T.: -0.013 min  
Response: 1856508  
Conc: 248.82 ug/L

Instrument :  
HPLC\_N  
ClientSampleId :  
YS19-SW10-1014MSD