

Data Path : Z:\HPCHEM1\HPLC_N\Data\HN110614\
 Data File : HN007062.D
 Signal(s) : VWD1A.CH
 Acq On : 06-Nov-2014, 19:53
 Operator : TP
 Sample : HSTDCCC0500
 Misc :
 ALS Vial : 81 Sample Multiplier: 1

Instrument :
 HPLC_N
 ClientSampleId :
 HSTDCCC0500

Integration File: autoint1.e
 Quant Time: Mar 07 02:59:35 2015
 Quant Method : Z:\HPCHEM1\HPLC_N\METHODS\HN103114.M
 Quant Title :
 QLast Update : Sat Mar 07 02:52:52 2015
 Response via : Initial Calibration
 Integrator: ChemStation

Volume Inj. : 50 uL
 Signal Phase : ZORBAX Extend-C18
 Signal Info : 4.6 X 100mm 3.5-Micron 80A

Compound	R.T.	Response	Conc Units

System Monitoring Compounds			
1) S 4-Nitroaniline	1.299	1521500	435.923 ug/L
Target Compounds			
2) T HMX	0.872	1927400	457.541 ug/L
3) T RDX	1.684	2613967	516.880 ug/L
4) T 1,3,5-Trinitrobenzene	2.654	5219757	512.357 ug/L
5) T 1,3-Dinitrobenzene	3.515	7985080	500.537 ng/ml
6) T 3,5-Dinitroaniline	3.891	5638684	502.082 ug/L
7) T Nitrobenzene	4.750	5785216	594.730 ug/L
8) T Tetryl	6.277	1851286	404.091 ug/L
9) T 2,4,6-Trinitrotoluene	6.516	5744257	564.652 ug/L
10) T 2-Amino-4,6-dinitroto...	7.071	5569405	505.628 ug/L
11) T 4-Amino-2,6-dinitroto...	7.419	3206249	564.332 ug/L
12) T 2,4-Dinitrotoluene	8.184	7659325	513.473 ug/L
13) T 2,6-Dinitrotoluene	8.594	4293587	532.977 ug/L
14) T 2-Nitrotoluene	11.941	3363194	525.819 ug/L
15) T 4-Nitrotoluene	12.693	2733221	514.270 ug/L
16) T 3-Nitrotoluene	14.011	3438915	494.614 ug/L
17) T PETN	19.013	4496580	533.167 ug/L

(f)=RT Delta > 1/2 Window

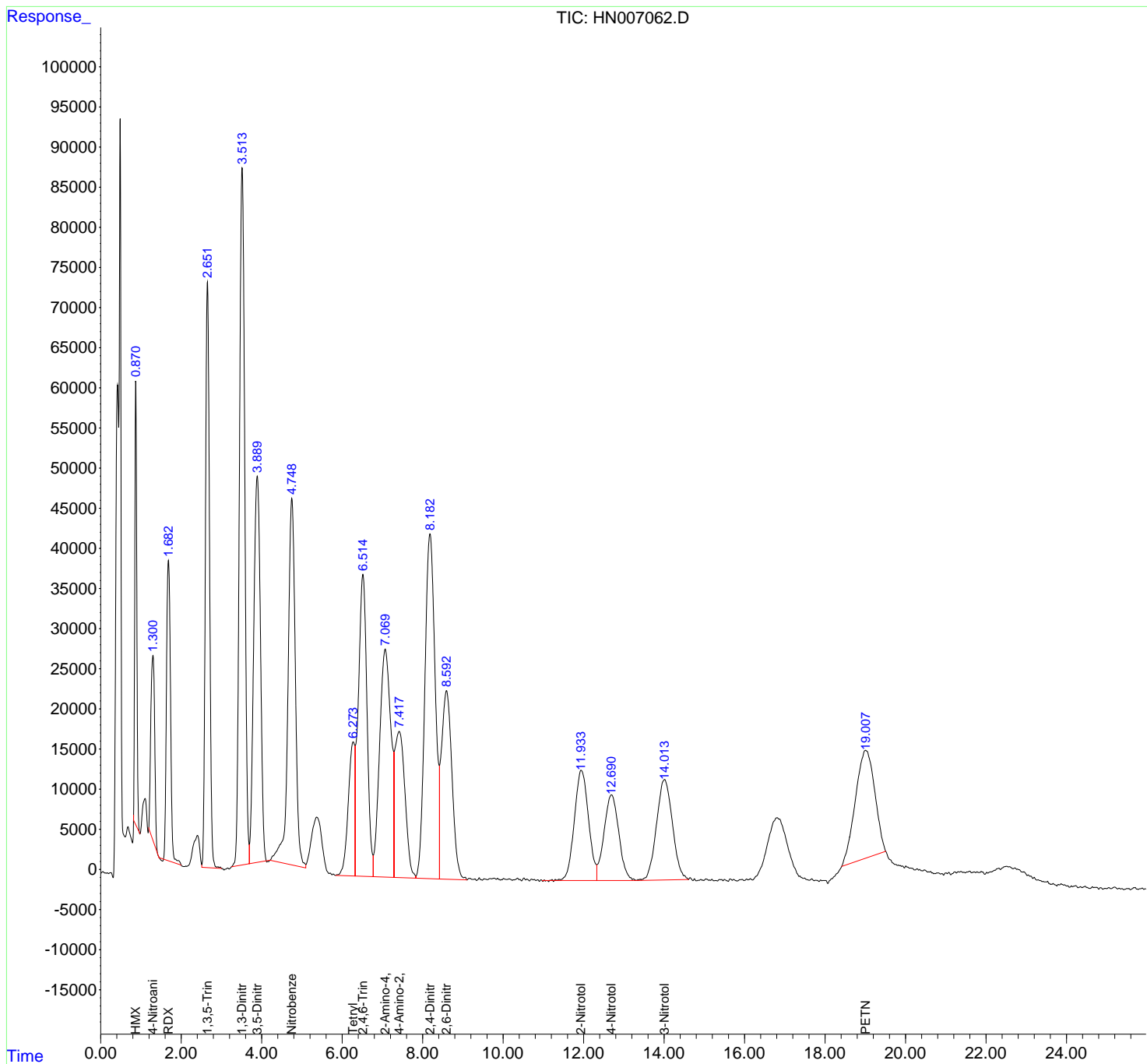
(m)=manual int.

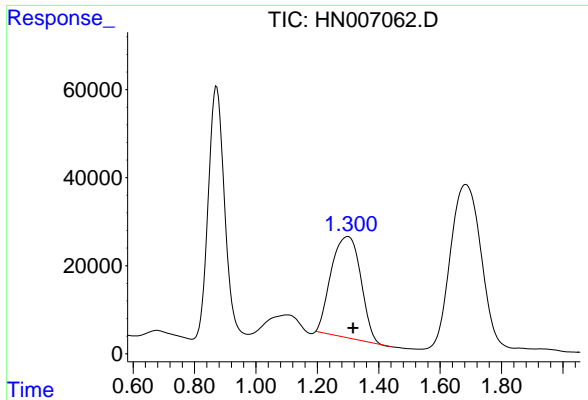
Data Path : Z:\HPCHEM1\HPLC_N\Data\HN110614\
 Data File : HN007062.D
 Signal(s) : VWD1A.CH
 Acq On : 06-Nov-2014, 19:53
 Operator : TP
 Sample : HSTDCCC0500
 Misc :
 ALS Vial : 81 Sample Multiplier: 1

Instrument :
 HPLC_N
 ClientSampled :
 HSTDCCC0500

Integration File: autoint1.e
 Quant Time: Mar 07 02:59:35 2015
 Quant Method : Z:\HPCHEM1\HPLC_N\METHODS\HN103114.M
 Quant Title :
 QLast Update : Sat Mar 07 02:52:52 2015
 Response via : Initial Calibration
 Integrator: ChemStation

Volume Inj. : 50 ul
 Signal Phase : ZORBAX Extend-C18
 Signal Info : 4.6 X 100mm 3.5-Micron 80A

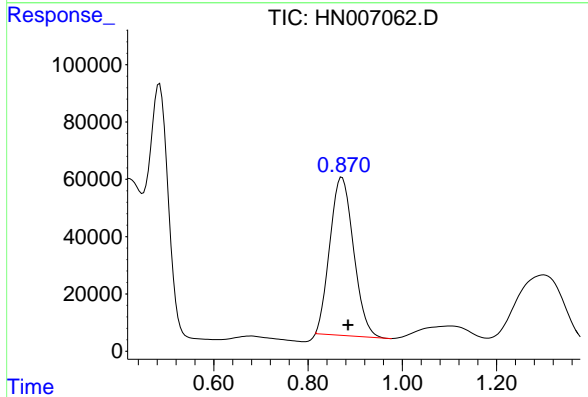




#1 4-Nitroaniline

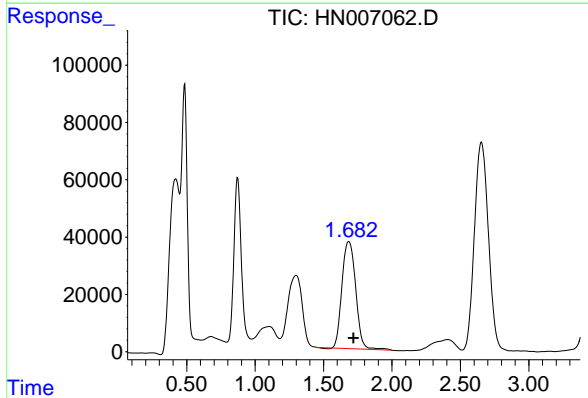
R.T.: 1.299 min
 Delta R.T.: -0.018 min
 Response: 1521500
 Conc: 435.92 ug/L

Instrument :
 HPLC_N
 ClientSampleId :
 HSTDCCC0500



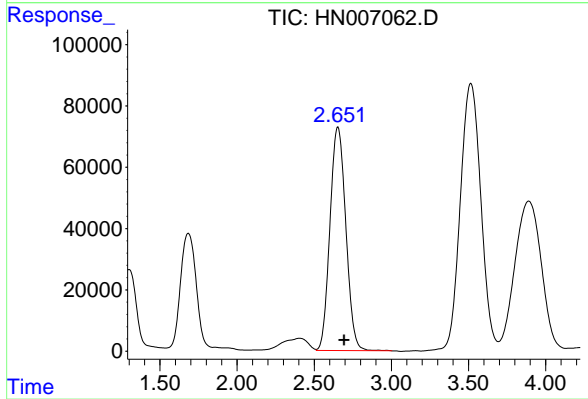
#2 HMX

R.T.: 0.872 min
 Delta R.T.: -0.012 min
 Response: 1927400
 Conc: 457.54 ug/L



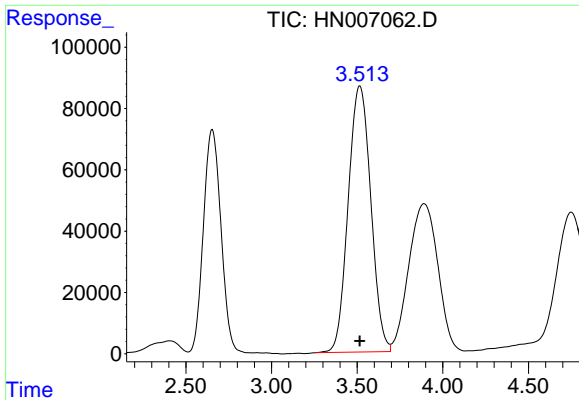
#3 RDX

R.T.: 1.684 min
 Delta R.T.: -0.033 min
 Response: 2613967
 Conc: 516.88 ug/L



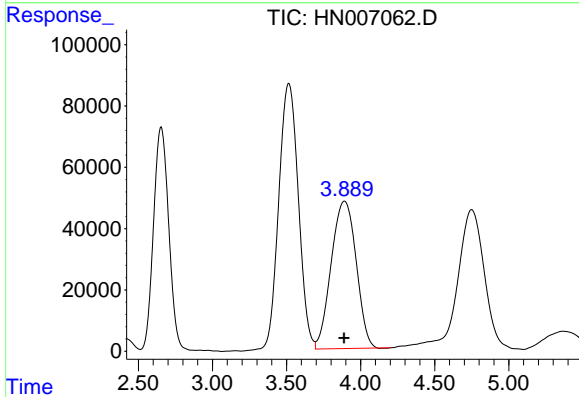
#4 1,3,5-Trinitrobenzene

R.T.: 2.654 min
 Delta R.T.: -0.039 min
 Response: 5219757
 Conc: 512.36 ug/L

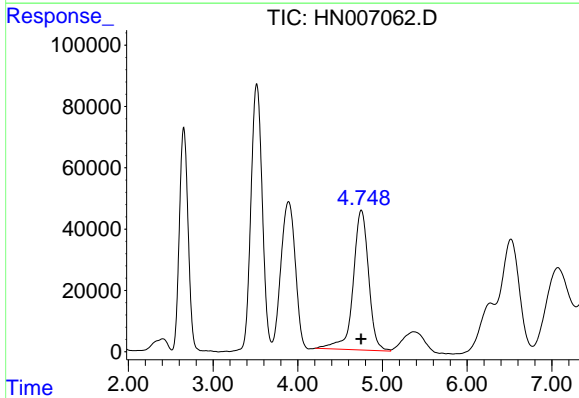


#5 1,3-Dinitrobenzene
 R.T.: 3.515 min
 Delta R.T.: 0.000 min
 Response: 7985080
 Conc: 500.54 ng/ml

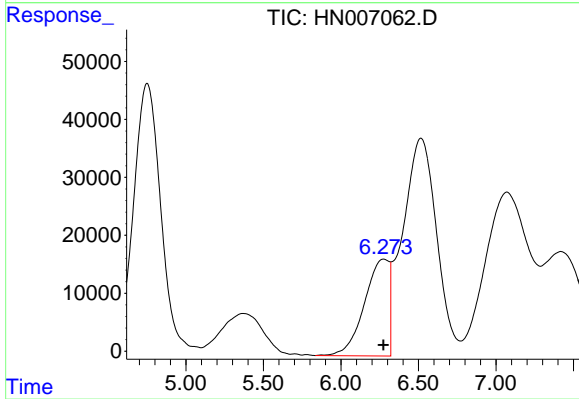
Instrument :
 HPLC_N
 ClientSampleId :
 HSTDCCC0500



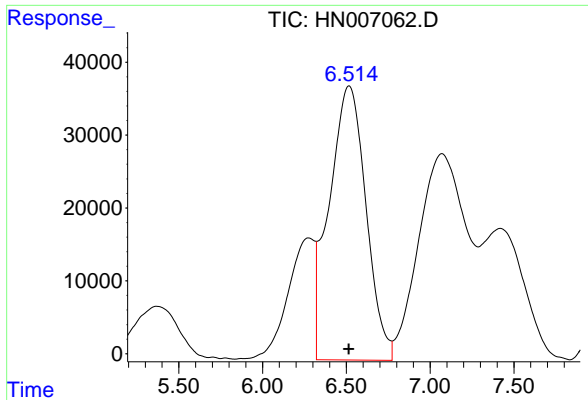
#6 3,5-Dinitroaniline
 R.T.: 3.891 min
 Delta R.T.: 0.000 min
 Response: 5638684
 Conc: 502.08 ug/L



#7 Nitrobenzene
 R.T.: 4.750 min
 Delta R.T.: 0.002 min
 Response: 5785216
 Conc: 594.73 ug/L



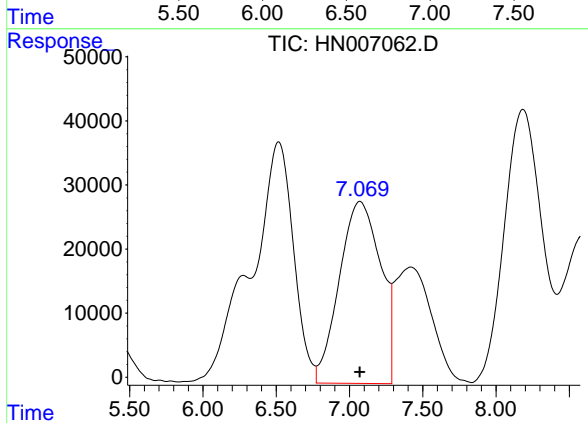
#8 Tetryl
 R.T.: 6.277 min
 Delta R.T.: 0.004 min
 Response: 1851286
 Conc: 404.09 ug/L



#9 2,4,6-Trinitrotoluene

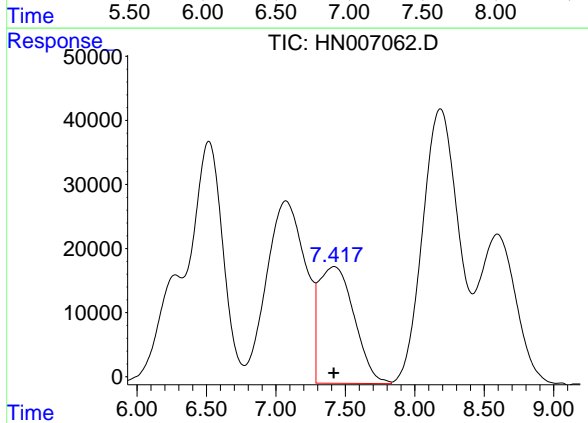
R.T.: 6.516 min
 Delta R.T.: 0.002 min
 Response: 5744257
 Conc: 564.65 ug/L

Instrument :
 HPLC_N
 ClientSampleId :
 HSTDCCC0500



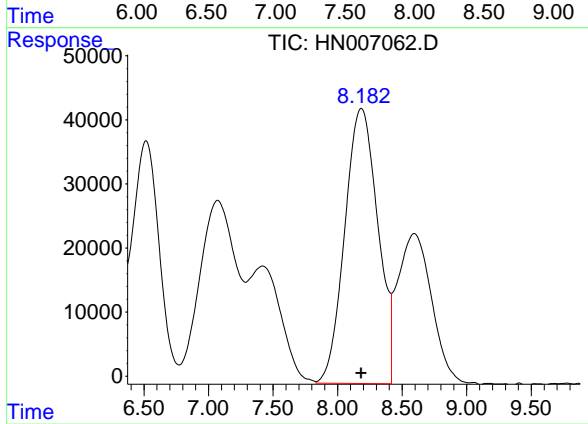
#10 2-Amino-4,6-dinitrotoluene

R.T.: 7.071 min
 Delta R.T.: 0.002 min
 Response: 5569405
 Conc: 505.63 ug/L



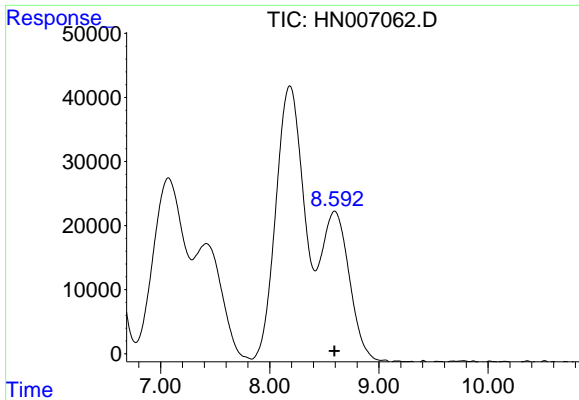
#11 4-Amino-2,6-dinitrotoluene

R.T.: 7.419 min
 Delta R.T.: 0.002 min
 Response: 3206249
 Conc: 564.33 ug/L



#12 2,4-Dinitrotoluene

R.T.: 8.184 min
 Delta R.T.: 0.002 min
 Response: 7659325
 Conc: 513.47 ug/L



#13 2,6-Dinitrotoluene

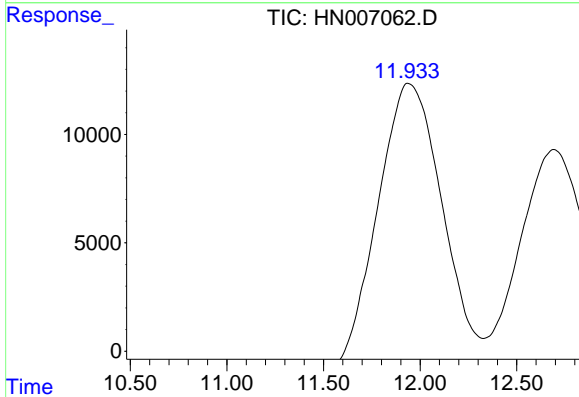
R.T.: 8.594 min

Delta R.T.: 0.002 min

Response: 4293587

Conc: 532.98 ug/L

Instrument :
HPLC_N
ClientSampled :
HSTDCCC0500



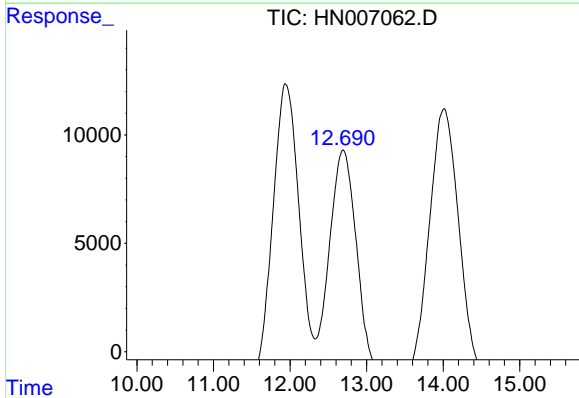
#14 2-Nitrotoluene

R.T.: 11.941 min

Delta R.T.: 0.010 min

Response: 3363194

Conc: 525.82 ug/L



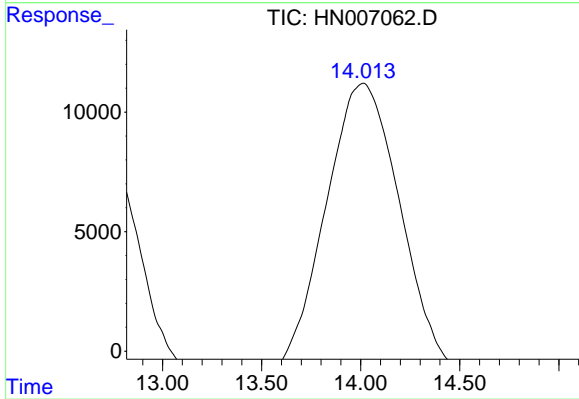
#15 4-Nitrotoluene

R.T.: 12.693 min

Delta R.T.: 0.001 min

Response: 2733221

Conc: 514.27 ug/L



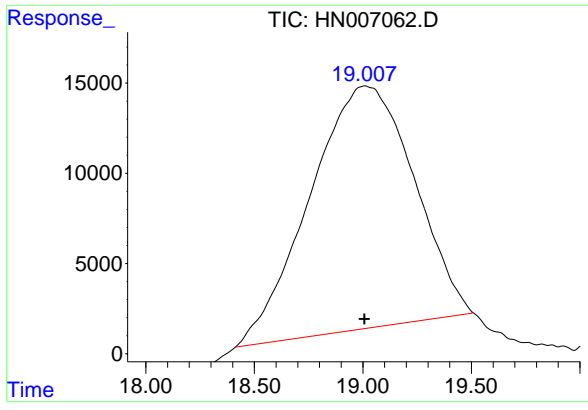
#16 3-Nitrotoluene

R.T.: 14.011 min

Delta R.T.: -0.002 min

Response: 3438915

Conc: 494.61 ug/L



#17 PETN

R.T.: 19.013 min
Delta R.T.: 0.006 min
Response: 4496580
Conc: 533.17 ug/L

Instrument :
HPLC_N
ClientSampleId :
HSTDCCC0500