

Data File : Z:\HPCHEM1\HPLC\_N\DATA\HN110813\HN005681.D Vial: 11  
 Acq On : 08-Nov-2013, 21:37 Operator: QM  
 Sample : PB72976BS Inst : G1314A  
 Misc : Multiplr: 1.00  
 IntFile : autoint1.e  
 Quant Time: Nov 11 12:08 2013 Quant Results File: HN110813.RES

Instrument :  
 HPLC\_N  
 ClientSampled :  
 PB72976BS

Manual Integrations  
 APPROVED  
 QI  
 11/11/2013 6:41:56 PM

Quant Method : Z:\HPCHEM1\HPLC\_N\METHOD\HN110813.M  
 Title :  
 Last Update : Mon Jul 22 14:51:19 2013  
 Response via : Initial Calibration  
 DataAcq Meth : 8330AGIP.M

Volume Inj. : 50 ul  
 Signal Phase : ZORBAX Extend-C18  
 Signal Info : 4.6 X 100mm 3.5-Micron 80A

Compound	R.T.	Response	Conc Units
-----			
System Monitoring Compounds			
1) S 4-Nitroaniline	1.29	1206325	326.800 ug/L
Target Compounds			
2) T HMX	0.87	977278	243.413 ug/L
3) T RDX	1.66	1285029	234.923 ug/L
4) T 1,3,5-Trinitrobenzene	2.62	2587699	248.885 ug/L
5) T 3,5-Dinitroaniline	3.46	3845995	238.473 ng/ml
6) T 1,3-Dinitrobenzene	3.78	3780005	297.831 ug/L
7) T Nitrobenzene	4.63	2409331	236.398 ug/L
8) T Tetryl	6.03	1350633	196.730 ug/L
9) T 2,4,6-Trinitrotoluene	6.38	2424758	213.473 ug/L
10) T 2-Amino-4,6-dinitrotoluene	6.78	2573116	235.809 ug/L
11) T 4-Amino-2,6-dinitrotoluene	7.12	1759760	300.085 ug/L
12) T 2,4-Dinitrotoluene	7.93	3533967	239.303 ug/L m
13) T 2,6-Dinitrotoluene	8.30	2126127	269.713 ug/L m
14) T 2-Nitrotoluene	11.41	1722910	269.295 ug/L
15) T 4-Nitrotoluene	12.15	1382715	256.440 ug/L
16) T 3-Nitrotoluene	13.38	1673864	244.060 ug/L m
17) T PETN	18.43	2911853	336.268 ug/L m

-----  
 Analyst Signature: \_\_\_\_\_ Analyst Name: \_\_\_\_\_ Date: \_\_\_\_\_  
 -----

-----REASONS FOR MANUAL INTEGRATIONS-----

\_\_\_Poor resolution of peaks exhibited on chromatogram.Compound #: \_\_\_\_\_

\_\_\_Peak Integrated by software incorrectly.Compound #: \_\_\_\_\_

\_\_\_OTHER: \_\_\_\_\_ Compound #: \_\_\_\_\_

(f)=RT Delta > 1/2 Window (m)=manual int.

Quantitation Report

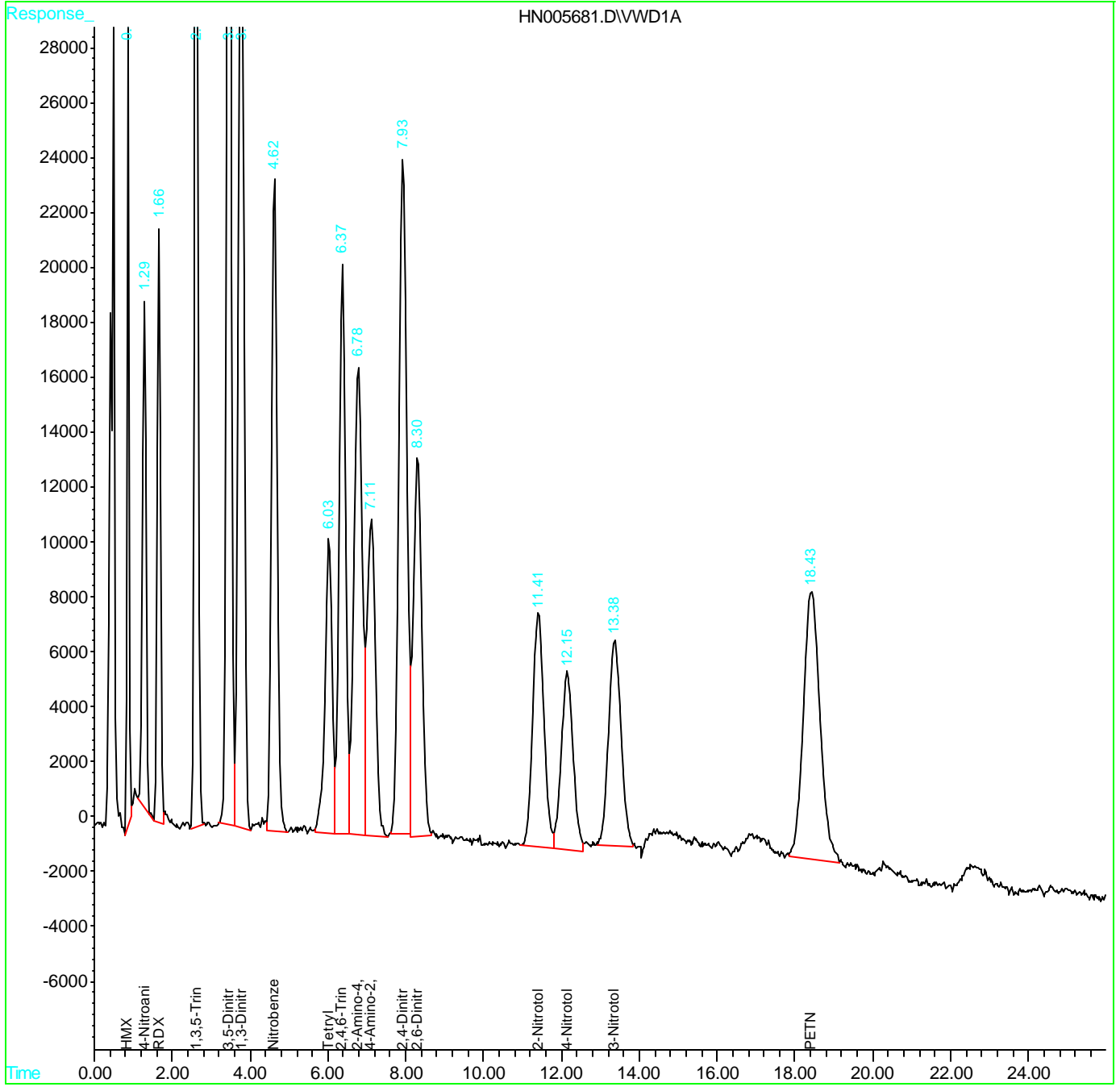
Data File : Z:\HPCHEM1\HPLC\_N\DATA\HN110813\HN005681.D Vial: 11  
Acq On : 08-Nov-2013, 21:37 Operator: QM  
Sample : PB72976BS Inst : G1314A  
Misc : Multiplr: 1.00  
IntFile : autoint1.e  
Quant Time: Nov 11 12:08 2013 Quant Results File: HN110813.RES

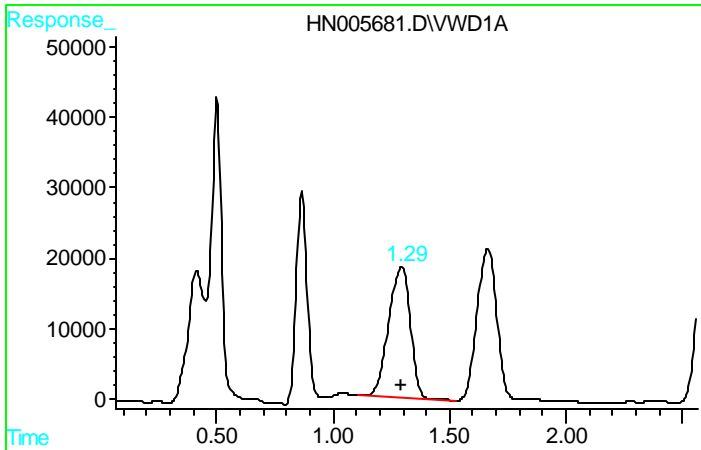
Instrument :  
HPLC\_N  
Client Sampled :  
PB72976BS

Manual Integrations  
APPROVED  
QI  
11/11/2013 6:41:56 PM

Quant Method : Z:\HPCHEM1\HPLC\_N\METHOD\HN110813.M  
Title :  
Last Update : Mon Jul 22 14:51:19 2013  
Response via : Multiple Level Calibration  
DataAcq Meth : 8330AGIP.M

Volume Inj. : 50 ul  
Signal Phase : ZORBAX Extend-C18  
Signal Info : 4.6 X 100mm 3.5-Micron 80A



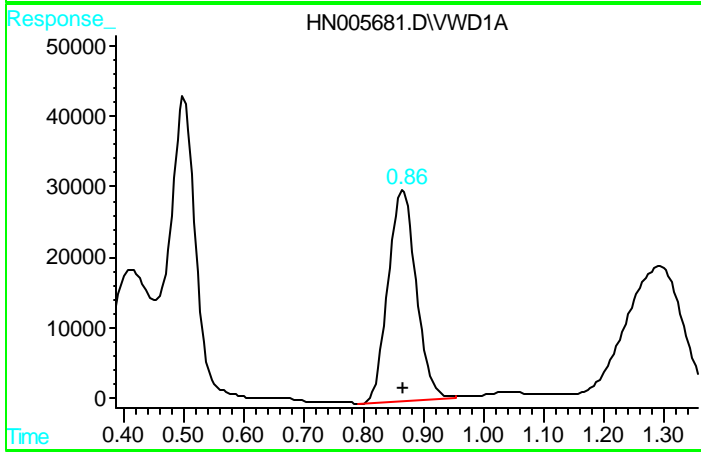


#1 4-Nitroaniline

R.T.: 1.295 min  
 Delta R.T.: 0.003 min  
 Response: 1206325  
 Conc: 326.80 ug/L

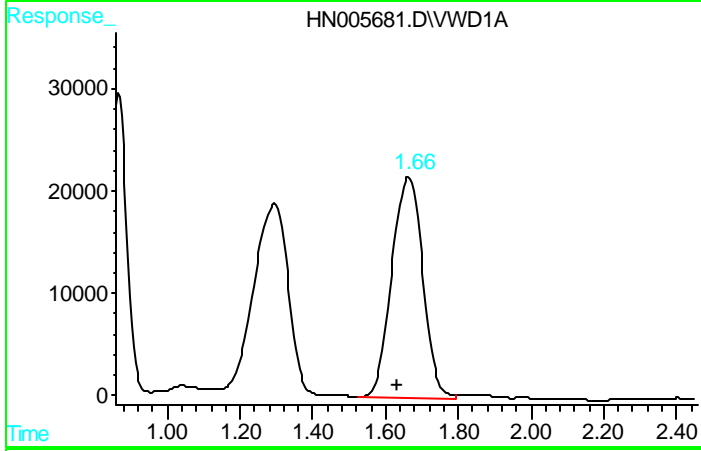
Instrument :  
 HPLC\_N  
 ClientSampled :  
 PB72976BS

Manual Integrations  
 APPROVED  
 QI  
 11/11/2013 6:41:56 PM



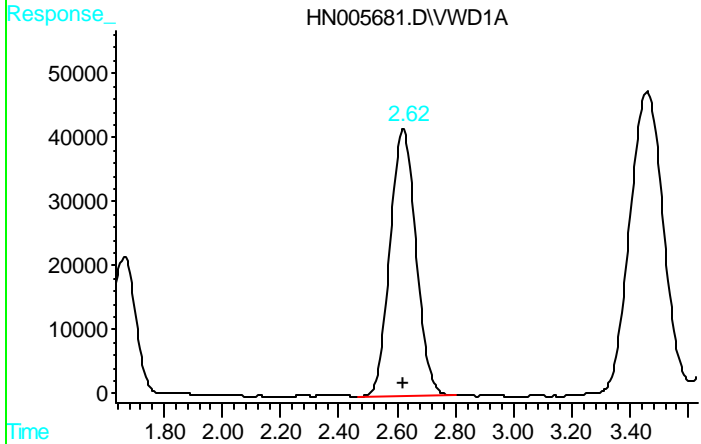
#2 HMX

R.T.: 0.867 min  
 Delta R.T.: 0.001 min  
 Response: 977278  
 Conc: 243.41 ug/L



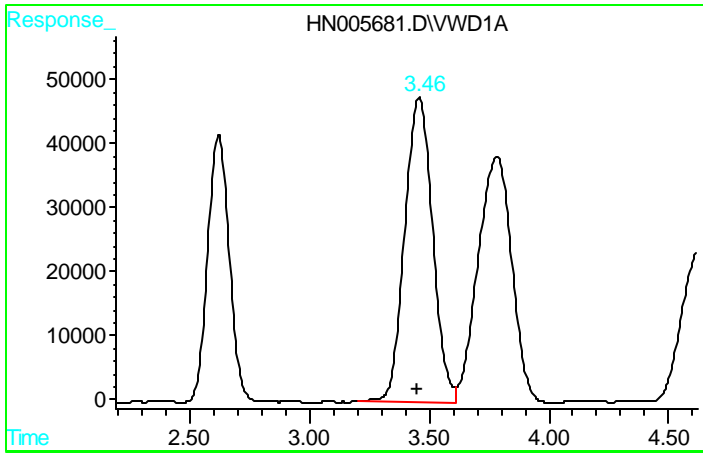
#3 RDX

R.T.: 1.665 min  
 Delta R.T.: 0.034 min  
 Response: 1285029  
 Conc: 234.92 ug/L



#4 1,3,5-Trinitrobenzene

R.T.: 2.622 min  
 Delta R.T.: 0.005 min  
 Response: 2587699  
 Conc: 248.89 ug/L



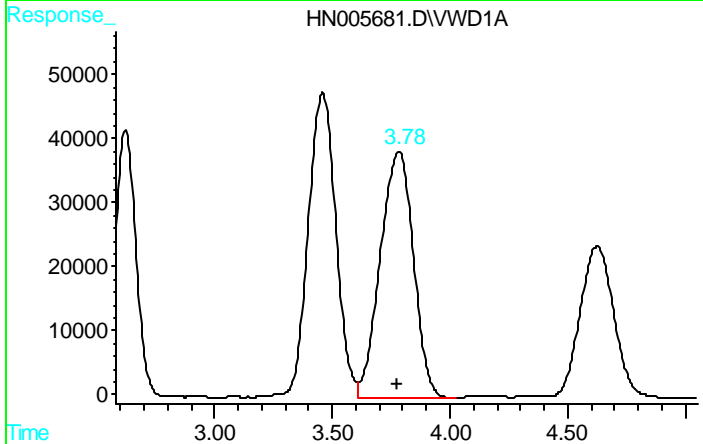
#5 3,5-Dinitroaniline

R.T.: 3.460 min  
 Delta R.T.: 0.008 min  
 Response: 3845995  
 Conc: 238.47 ng/ml

Instrument :  
 HPLC\_N  
 ClientSampled :  
 PB72976BS

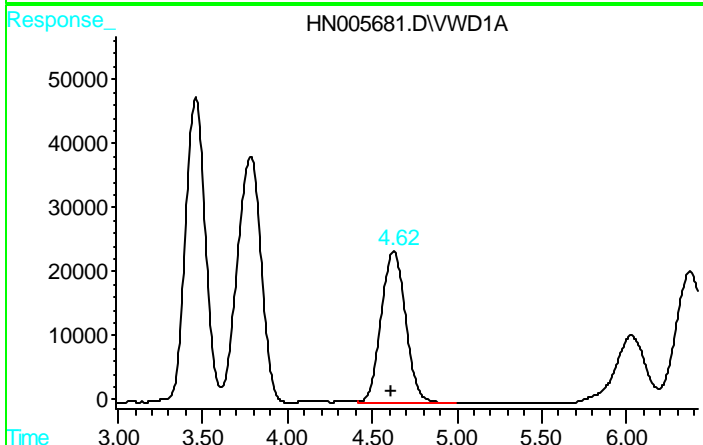
Manual Integrations  
 APPROVED

QI  
 11/11/2013 6:41:56 PM



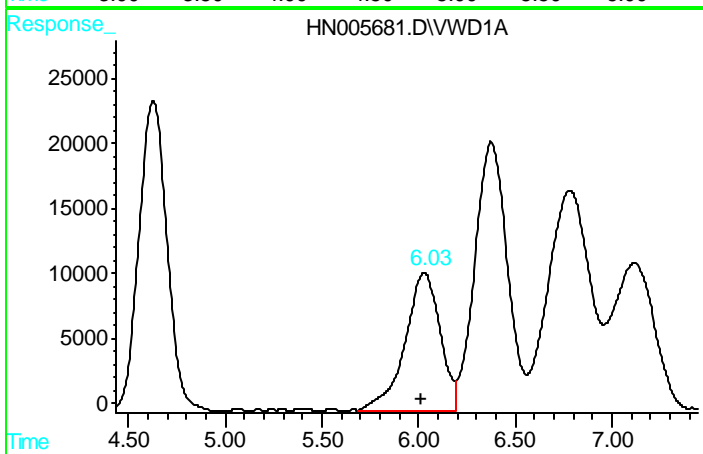
#6 1,3-Dinitrobenzene

R.T.: 3.784 min  
 Delta R.T.: 0.010 min  
 Response: 3780005  
 Conc: 297.83 ug/L



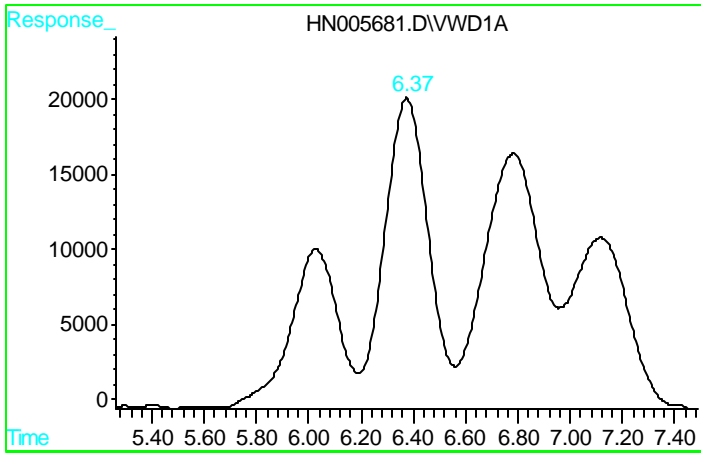
#7 Nitrobenzene

R.T.: 4.627 min  
 Delta R.T.: 0.012 min  
 Response: 2409331  
 Conc: 236.40 ug/L



#8 Tetryl

R.T.: 6.029 min  
 Delta R.T.: 0.020 min  
 Response: 1350633  
 Conc: 196.73 ug/L

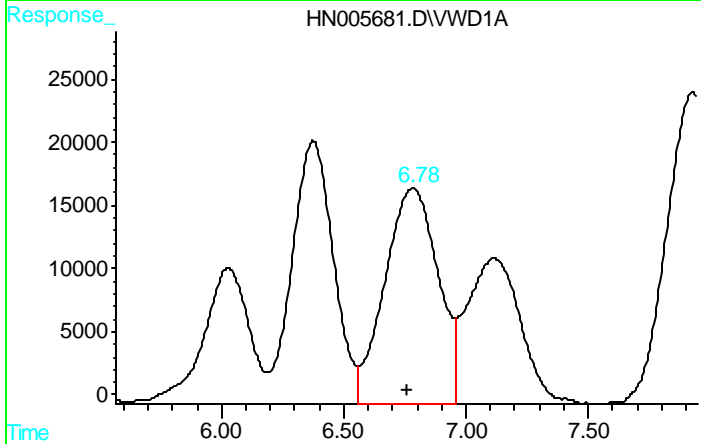


#9 2,4,6-Trinitrotoluene

R.T.: 6.375 min  
 Delta R.T.: 0.020 min  
 Response: 2424758  
 Conc: 213.47 ug/L

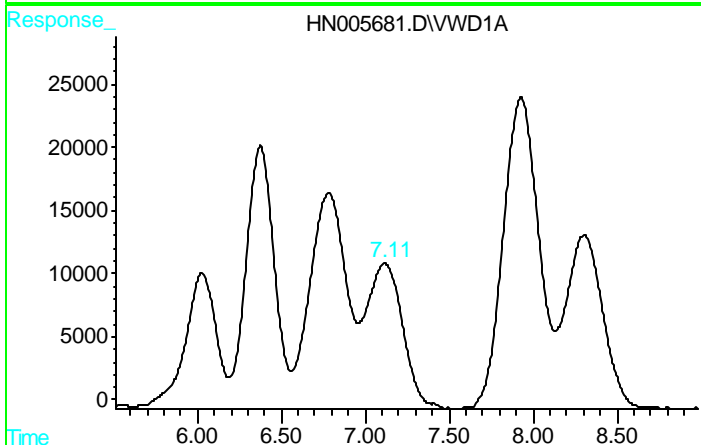
Instrument :  
 HPLC\_N  
 ClientSampled :  
 PB72976BS

Manual Integrations  
 APPROVED  
 QI  
 11/11/2013 6:41:56 PM



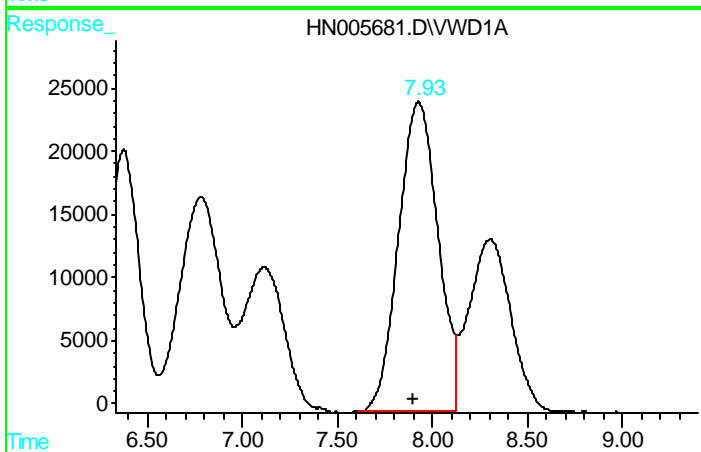
#10 2-Amino-4,6-dinitrotoluene

R.T.: 6.784 min  
 Delta R.T.: 0.024 min  
 Response: 2573116  
 Conc: 235.81 ug/L



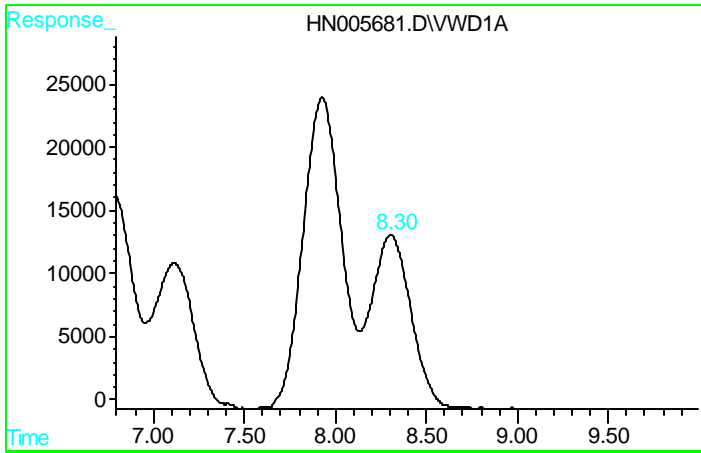
#11 4-Amino-2,6-dinitrotoluene

R.T.: 7.117 min  
 Delta R.T.: 0.028 min  
 Response: 1759760  
 Conc: 300.09 ug/L



#12 2,4-Dinitrotoluene

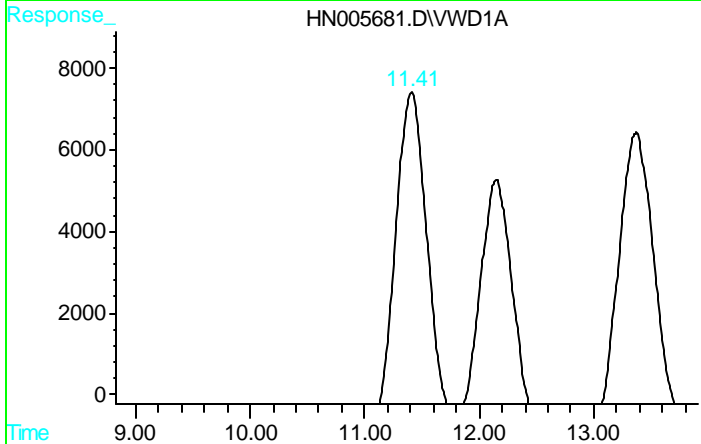
R.T.: 7.927 min  
 Delta R.T.: 0.028 min  
 Response: 3533967  
 Conc: 239.30 ug/L m



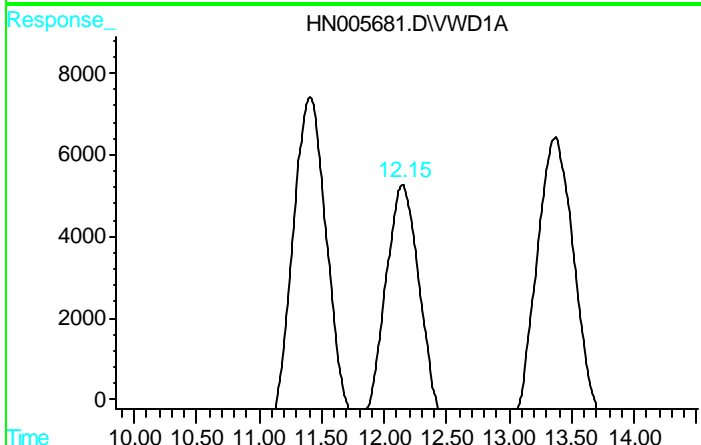
#13 2,6-Dinitrotoluene  
 R.T.: 8.304 min  
 Delta R.T.: 0.032 min  
 Response: 2126127  
 Conc: 269.71 ug/L m

Instrument :  
 HPLC\_N  
 ClientSampled :  
 PB72976BS

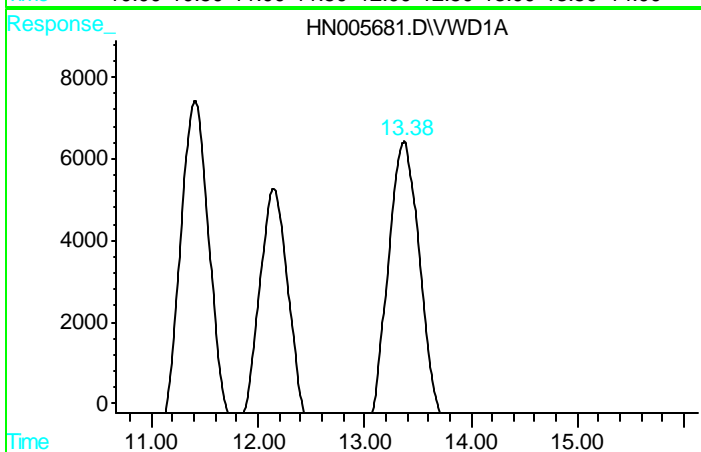
Manual Integrations  
 APPROVED  
 QI  
 11/11/2013 6:41:56 PM



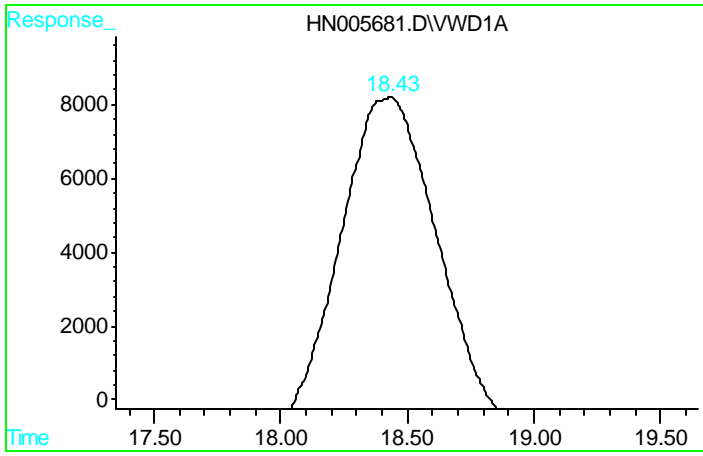
#14 2-Nitrotoluene  
 R.T.: 11.409 min  
 Delta R.T.: 0.042 min  
 Response: 1722910  
 Conc: 269.29 ug/L



#15 4-Nitrotoluene  
 R.T.: 12.147 min  
 Delta R.T.: 0.037 min  
 Response: 1382715  
 Conc: 256.44 ug/L



#16 3-Nitrotoluene  
 R.T.: 13.377 min  
 Delta R.T.: 0.052 min  
 Response: 1673864  
 Conc: 244.06 ug/L m



#17 PETN

R.T.: 18.433 min  
Delta R.T.: 0.075 min  
Response: 2911853  
Conc: 336.27 ug/L m

Instrument :  
HPLC\_N  
ClientSampleId :  
PB72976BS

Manual Integrations  
APPROVED

QI  
11/11/2013 6:41:56 PM