

Data File : Z:\HPCHEM1\HPLC_N\DATA\HN110813\HN005682.D Vial: 12
 Acq On : 08-Nov-2013, 22:05 Operator: QM
 Sample : PB73051BS Inst : G1314A
 Misc : Multiplr: 1.00
 IntFile : autoint1.e
 Quant Time: Nov 11 12:12 2013 Quant Results File: HN110813.RES

Instrument :
 HPLC_N
 Client Sampled :
 PB73051BS

Manual Integrations
 APPROVED
 QI
 11/11/2013 6:41:55 PM

Quant Method : Z:\HPCHEM1\HPLC_N\METHOD\HN110813.M
 Title :
 Last Update : Mon Jul 22 14:51:19 2013
 Response via : Initial Calibration
 DataAcq Meth : 8330AGIP.M

Volume Inj. : 50 ul
 Signal Phase : ZORBAX Extend-C18
 Signal Info : 4.6 X 100mm 3.5-Micron 80A

Compound	R.T.	Response	Conc Units

System Monitoring Compounds			
1) S 4-Nitroaniline	1.29	627404	169.967 ug/L
Target Compounds			
2) T HMX	0.87	480958	119.793 ug/L
3) T RDX	1.65	652495	119.286 ug/L
4) T 1,3,5-Trinitrobenzene	2.62	1301833	125.211 ug/L
5) T 3,5-Dinitroaniline	3.46	1919904	119.045 ng/ml
6) T 1,3-Dinitrobenzene	3.79	1919035	151.203 ug/L
7) T Nitrobenzene	4.63	1249404	122.589 ug/L
8) T Tetryl	6.03	721317	105.065 ug/L
9) T 2,4,6-Trinitrotoluene	6.37	1269279	111.746 ug/L
10) T 2-Amino-4,6-dinitrotoluene	6.78	1281068	117.401 ug/L
11) T 4-Amino-2,6-dinitrotoluene	7.12	922642	157.335 ug/L
12) T 2,4-Dinitrotoluene	7.92	1809806	122.551 ug/L m
13) T 2,6-Dinitrotoluene	8.30	1028116	130.423 ug/L m
14) T 2-Nitrotoluene	11.41	879772	137.510 ug/L
15) T 4-Nitrotoluene	12.13	722403	133.978 ug/L
16) T 3-Nitrotoluene	13.36	889087	129.635 ug/L
17) T PETN	18.44	1156486	133.554 ug/L m

 Analyst Signature: _____ Analyst Name: _____ Date: _____

-----REASONS FOR MANUAL INTEGRATIONS-----

___Poor resolution of peaks exhibited on chromatogram.Compound #: _____

___Peak Integrated by software incorrectly.Compound #: _____

___OTHER: _____ Compound #: _____

(f)=RT Delta > 1/2 Window (m)=manual int.

Quantitation Report

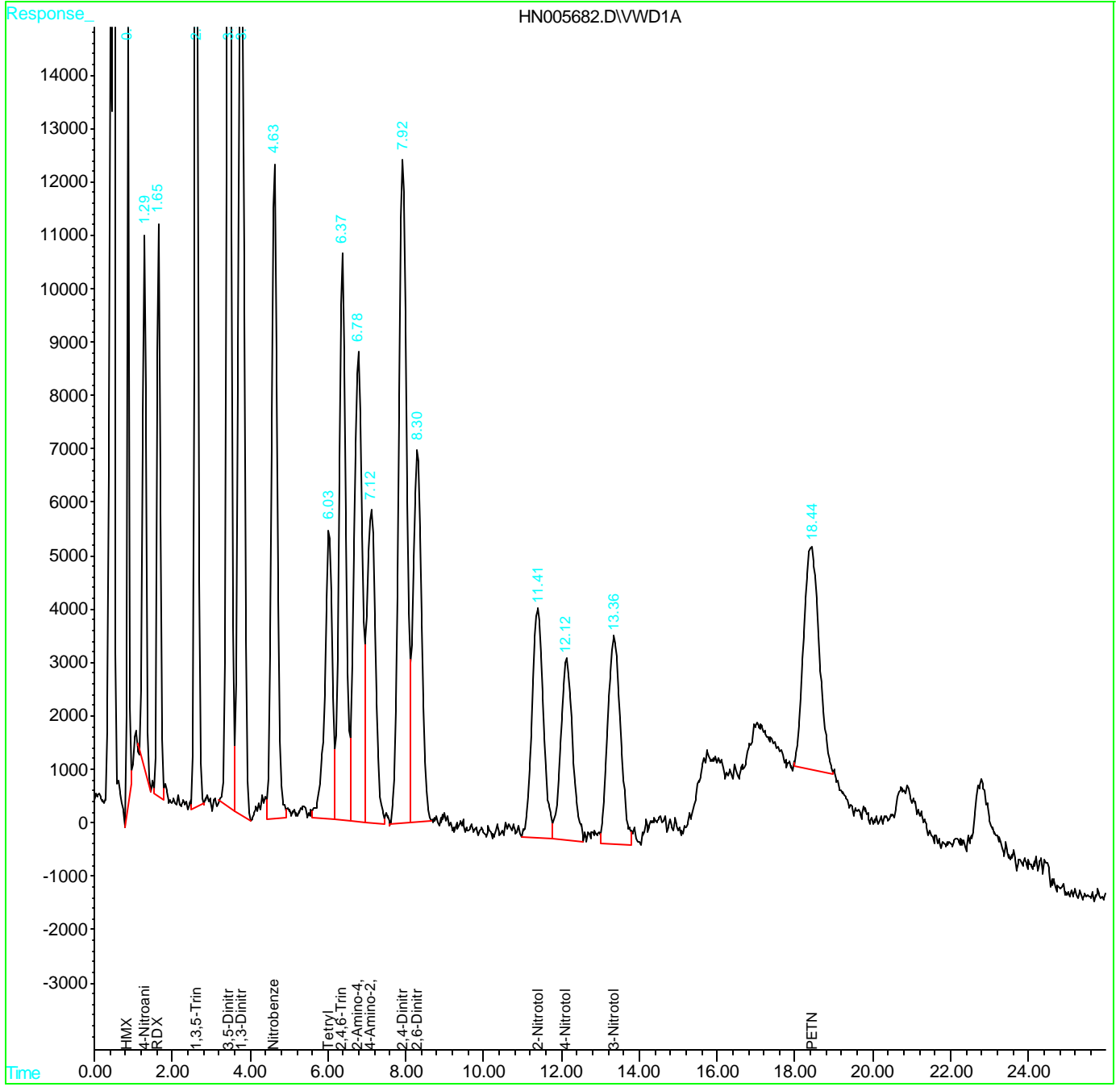
Data File : Z:\HPCHEM1\HPLC_N\DATA\HN110813\HN005682.D Vial: 12
Acq On : 08-Nov-2013, 22:05 Operator: QM
Sample : PB73051BS Inst : G1314A
Misc : Multiplr: 1.00
IntFile : autoint1.e
Quant Time: Nov 11 12:12 2013 Quant Results File: HN110813.RES

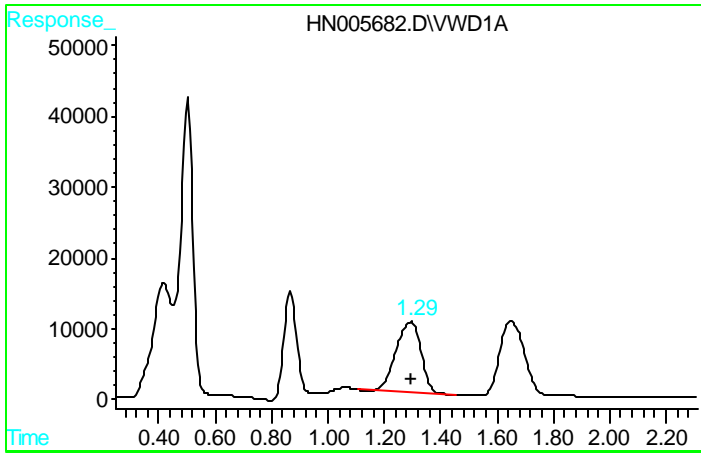
Instrument :
HPLC_N
Client Sampled :
PB73051BS

Manual Integrations
APPROVED
QI
11/11/2013 6:41:55 PM

Quant Method : Z:\HPCHEM1\HPLC_N\METHOD\HN110813.M
Title :
Last Update : Mon Jul 22 14:51:19 2013
Response via : Multiple Level Calibration
DataAcq Meth : 8330AGIP.M

Volume Inj. : 50 ul
Signal Phase : ZORBAX Extend-C18
Signal Info : 4.6 X 100mm 3.5-Micron 80A

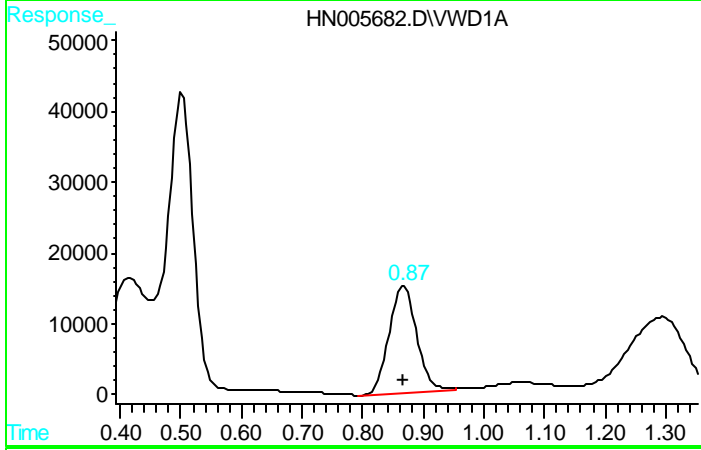




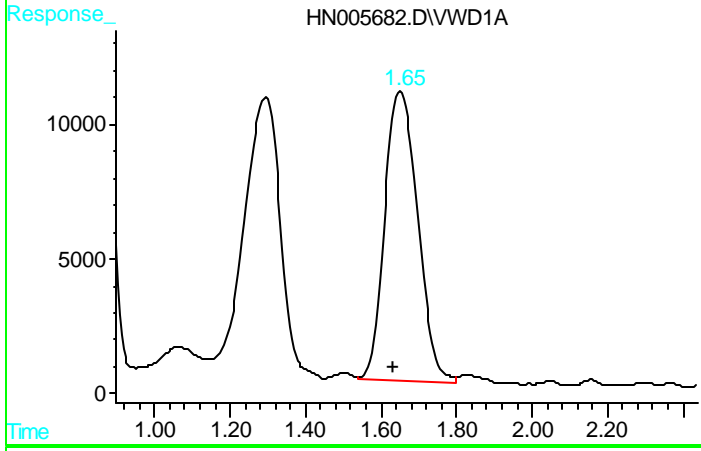
#1 4-Nitroaniline
 R.T.: 1.295 min
 Delta R.T.: 0.003 min
 Response: 627404
 Conc: 169.97 ug/L

Instrument :
 HPLC_N
 ClientSampled :
 PB73051BS

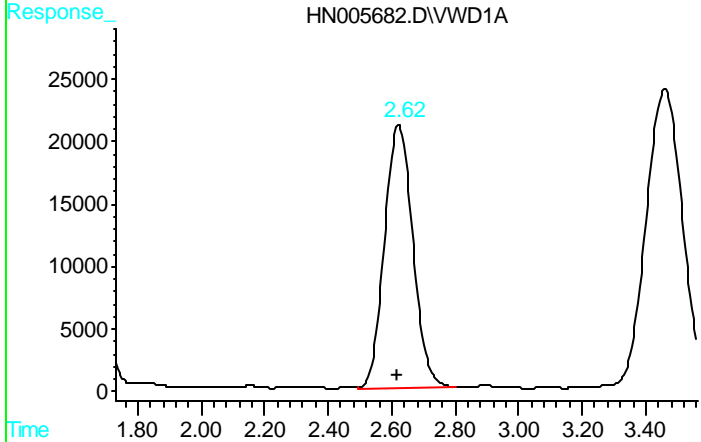
Manual Integrations
 APPROVED
 QI
 11/11/2013 6:41:55 PM



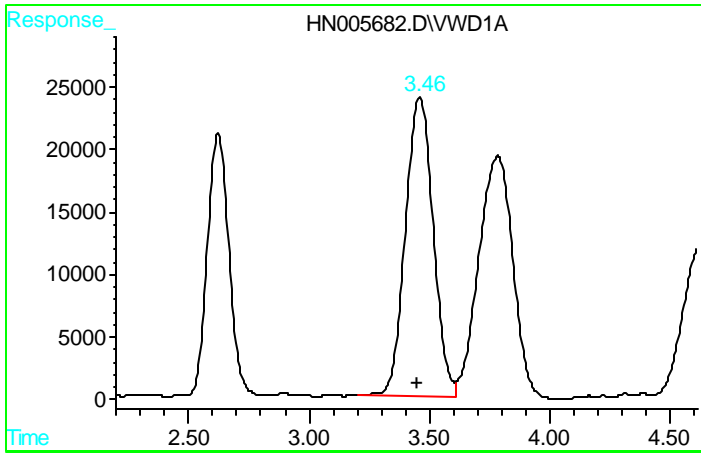
#2 HMX
 R.T.: 0.868 min
 Delta R.T.: 0.002 min
 Response: 480958
 Conc: 119.79 ug/L



#3 RDX
 R.T.: 1.651 min
 Delta R.T.: 0.020 min
 Response: 652495
 Conc: 119.29 ug/L



#4 1,3,5-Trinitrobenzene
 R.T.: 2.623 min
 Delta R.T.: 0.006 min
 Response: 1301833
 Conc: 125.21 ug/L



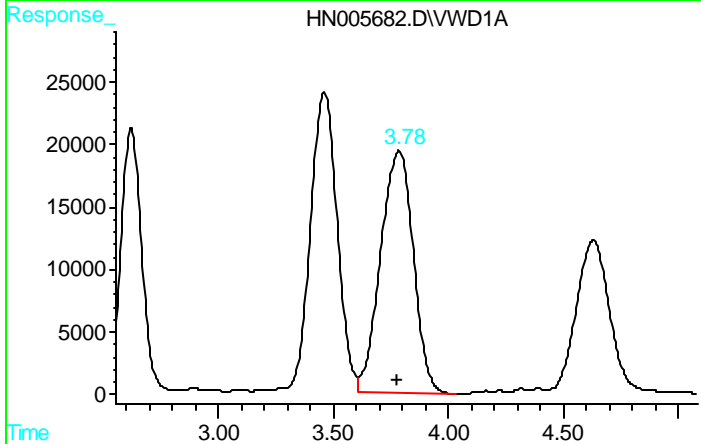
#5 3,5-Dinitroaniline

R.T.: 3.461 min
Delta R.T.: 0.010 min
Response: 1919904
Conc: 119.04 ng/ml

Instrument :
HPLC_N
ClientSampled :
PB73051BS

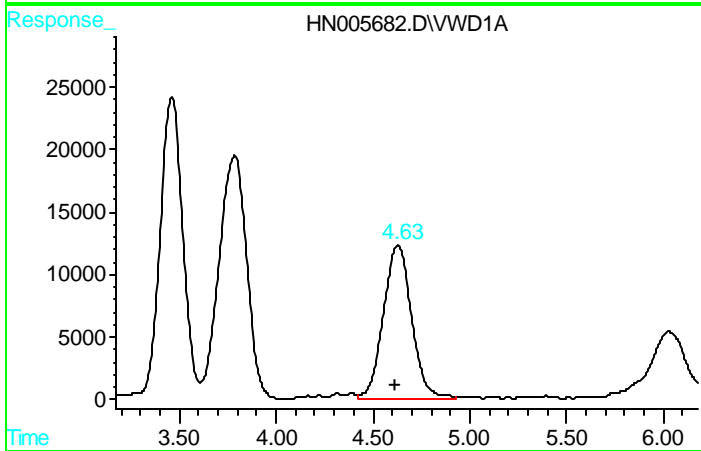
Manual Integrations
APPROVED

QI
11/11/2013 6:41:55 PM



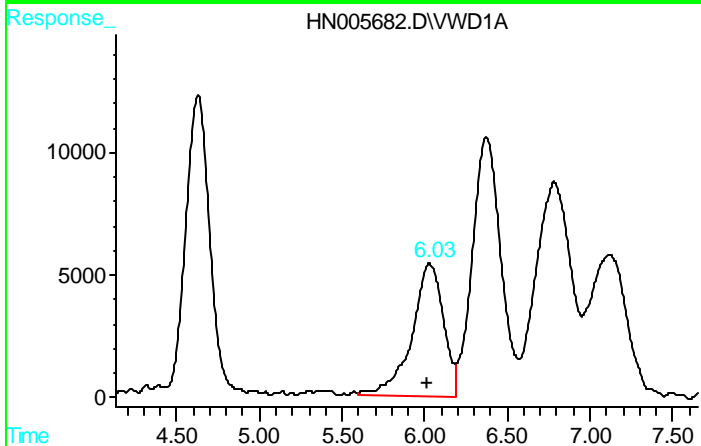
#6 1,3-Dinitrobenzene

R.T.: 3.785 min
Delta R.T.: 0.012 min
Response: 1919035
Conc: 151.20 ug/L



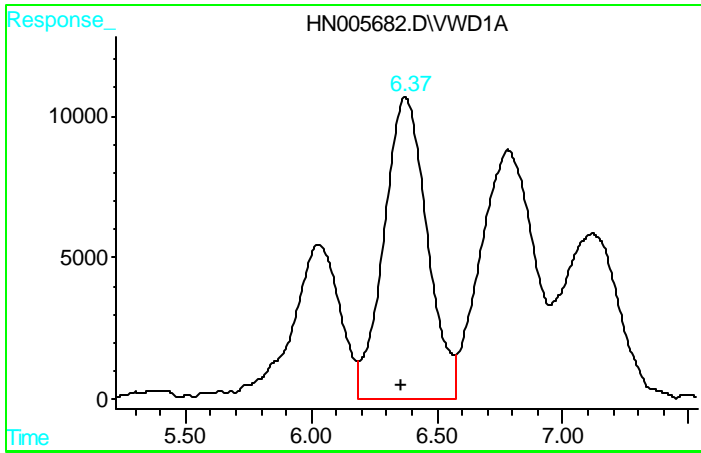
#7 Nitrobenzene

R.T.: 4.630 min
Delta R.T.: 0.015 min
Response: 1249404
Conc: 122.59 ug/L



#8 Tetryl

R.T.: 6.029 min
Delta R.T.: 0.021 min
Response: 721317
Conc: 105.07 ug/L



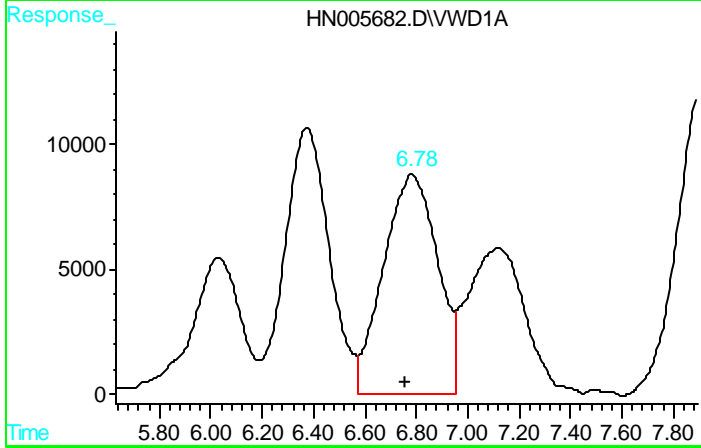
#9 2,4,6-Trinitrotoluene

R.T.: 6.374 min
 Delta R.T.: 0.019 min
 Response: 1269279
 Conc: 111.75 ug/L

Instrument :
 HPLC_N
 ClientSampled :
 PB73051BS

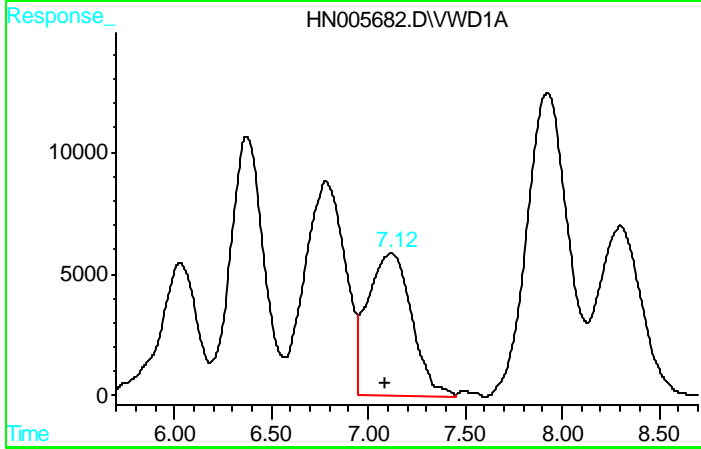
Manual Integrations
 APPROVED

QI
 11/11/2013 6:41:55 PM



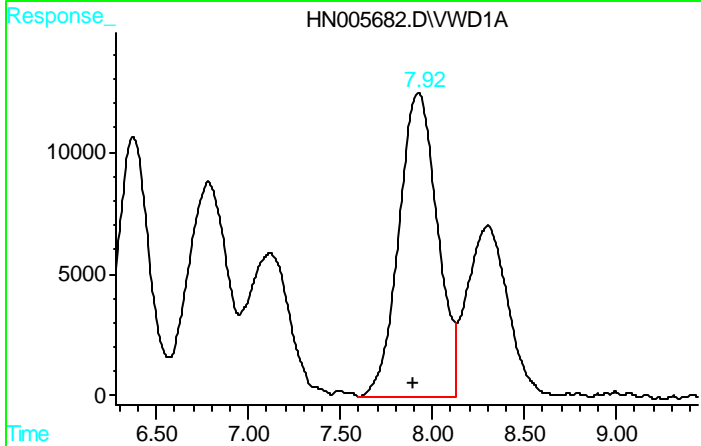
#10 2-Amino-4,6-dinitrotoluene

R.T.: 6.783 min
 Delta R.T.: 0.024 min
 Response: 1281068
 Conc: 117.40 ug/L



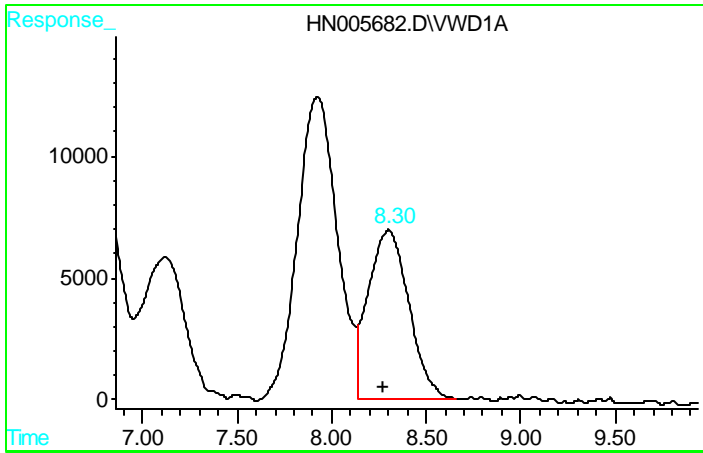
#11 4-Amino-2,6-dinitrotoluene

R.T.: 7.119 min
 Delta R.T.: 0.030 min
 Response: 922642
 Conc: 157.33 ug/L



#12 2,4-Dinitrotoluene

R.T.: 7.923 min
 Delta R.T.: 0.024 min
 Response: 1809806
 Conc: 122.55 ug/L m



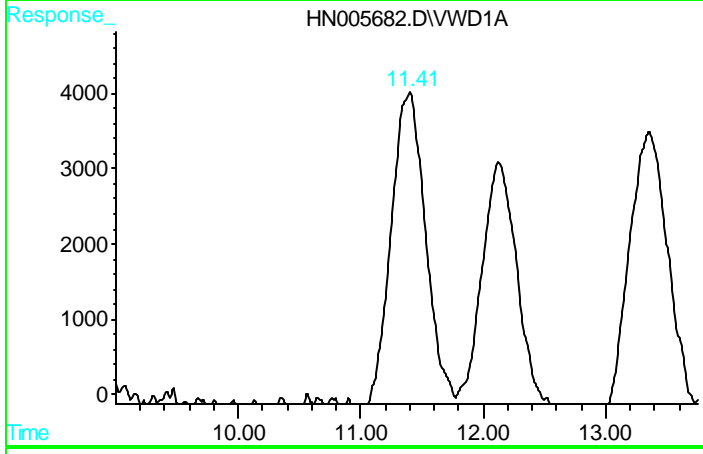
#13 2,6-Dinitrotoluene

R.T.: 8.301 min
 Delta R.T.: 0.029 min
 Response: 1028116
 Conc: 130.42 ug/L m

Instrument :
 HPLC_N
 ClientSampled :
 PB73051BS

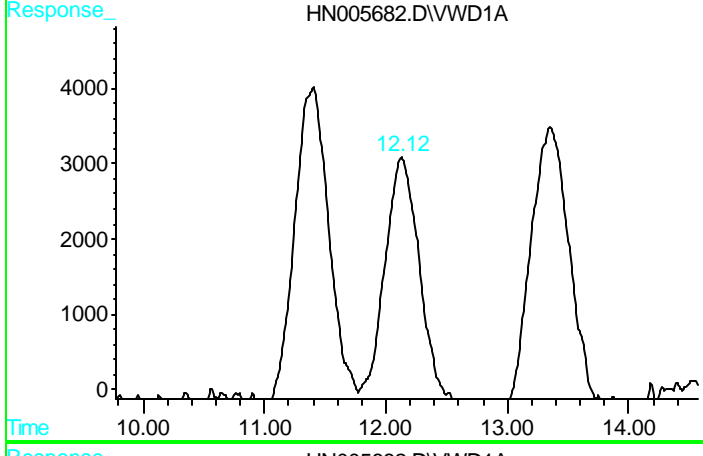
Manual Integrations
 APPROVED

QI
 11/11/2013 6:41:55 PM



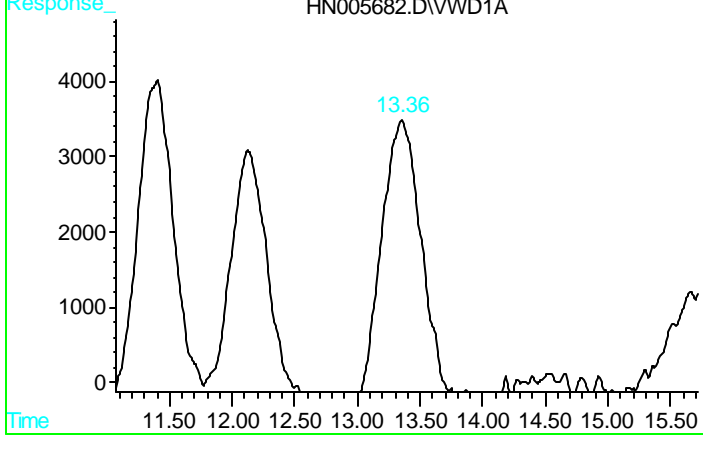
#14 2-Nitrotoluene

R.T.: 11.406 min
 Delta R.T.: 0.038 min
 Response: 879772
 Conc: 137.51 ug/L



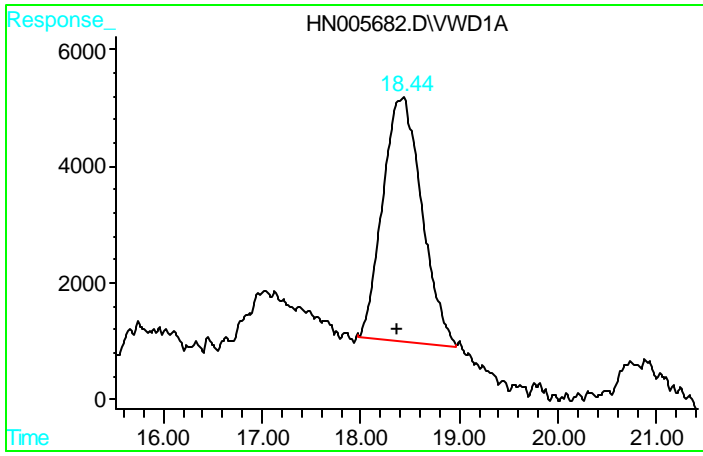
#15 4-Nitrotoluene

R.T.: 12.127 min
 Delta R.T.: 0.016 min
 Response: 722403
 Conc: 133.98 ug/L



#16 3-Nitrotoluene

R.T.: 13.356 min
 Delta R.T.: 0.031 min
 Response: 889087
 Conc: 129.63 ug/L



#17 PETN

R.T.: 18.440 min
Delta R.T.: 0.081 min
Response: 1156486
Conc: 133.55 ug/L m

Instrument :
HPLC_N
ClientSampled :
PB73051BS

Manual Integrations
APPROVED

QI
11/11/2013 6:41:55 PM