

Data Path : Z:\SVOASRV\HPCHEM1\BNA N\DATA\BN022220\
 Data File : BN009849.D
 Acq On : 22 Feb 2020 17:10
 Operator : CG/JU
 Sample : L1516-11
 Misc :
 ALS Vial : 38 Sample Multiplier: 1

Instrument :
 BNA_N
 ClientSampleId :
 DBD29

Quant Time: Feb 24 02:01:27 2020
 Quant Method : Z:\SVOASRV\HPCHEM1\BNA_N\METHODS\SOM-EPA-BN021220MA.M
 Quant Title : SVOA CALIBRATION
 QLast Update : Wed Feb 19 04:46:48 2020
 Response via : Initial Calibration

Internal Standards	R.T.	QIon	Response	Conc	Units	Dev(Min)
1) 1,4-Dichlorobenzene-d4	7.39	152	116923	20.00	ng/ul	-0.02
18) Naphthalene-d8	10.13	136	492780	20.00	ng/ul	-0.03
36) Acenaphthene-d10	14.03	164	307512	20.00	ng/ul	-0.02
62) Phenanthrene-d10	16.79	188	658729	20.00	ng/ul	-0.02
78) Chrysene-d12	21.00	240	584663	20.00	ng/ul	-0.02
86) Perylene-d12	23.10	264	655386	20.00	ng/ul	-0.03

System Monitoring Compounds

3) 1,4-Dioxane-d8	3.03	96	16837	5.92	ng/uL	-0.02
5) Phenol-d5	6.59	99	310947	31.26	ng/ul	-0.02
7) Bis-(2-Chloroethyl)ether-d	6.75	67	230621	33.60	ng/ul	-0.02
9) 2-Chlorophenol-d4	6.93	132	246268	32.89	ng/ul	-0.02
13) 4-Methylphenol-d8	8.10	113	256111	32.37	ng/ul	-0.03
19) Nitrobenzene-d5	8.53	128	120122	33.32	ng/ul	-0.02
22) 2-Nitrophenol-d4	9.24	143	132615	33.62	ng/ul	-0.03
26) 2,4-Dichlorophenol-d3	9.77	165	233436	30.79	ng/ul	-0.02
29) 4-Chloroaniline-d4	10.29	131	270543	31.76	ng/ul	-0.02
44) Dimethylphthalate-d6	13.46	166	749561	32.63	ng/ul	-0.02
47) Acenaphthylene-d8	13.72	160	911524	33.70	ng/ul	-0.02
52) 4-Nitrophenol-d4	14.27	143	99007	23.60	ng/ul	-0.02
58) Fluorene-d10	15.03	176	655959	33.08	ng/ul	-0.02
63) 4,6-Dinitro-2-methylphenol	15.19	200	97083	23.72	ng/ul	-0.02
71) Anthracene-d10	16.89	188	991401	32.83	ng/ul	-0.02
79) Pyrene-d10	19.20	212	1071793	35.07	ng/ul	-0.02
90) Benzo(a)pyrene-d12	22.97	264	1089370	33.28	ng/ul	-0.03

Target Compounds

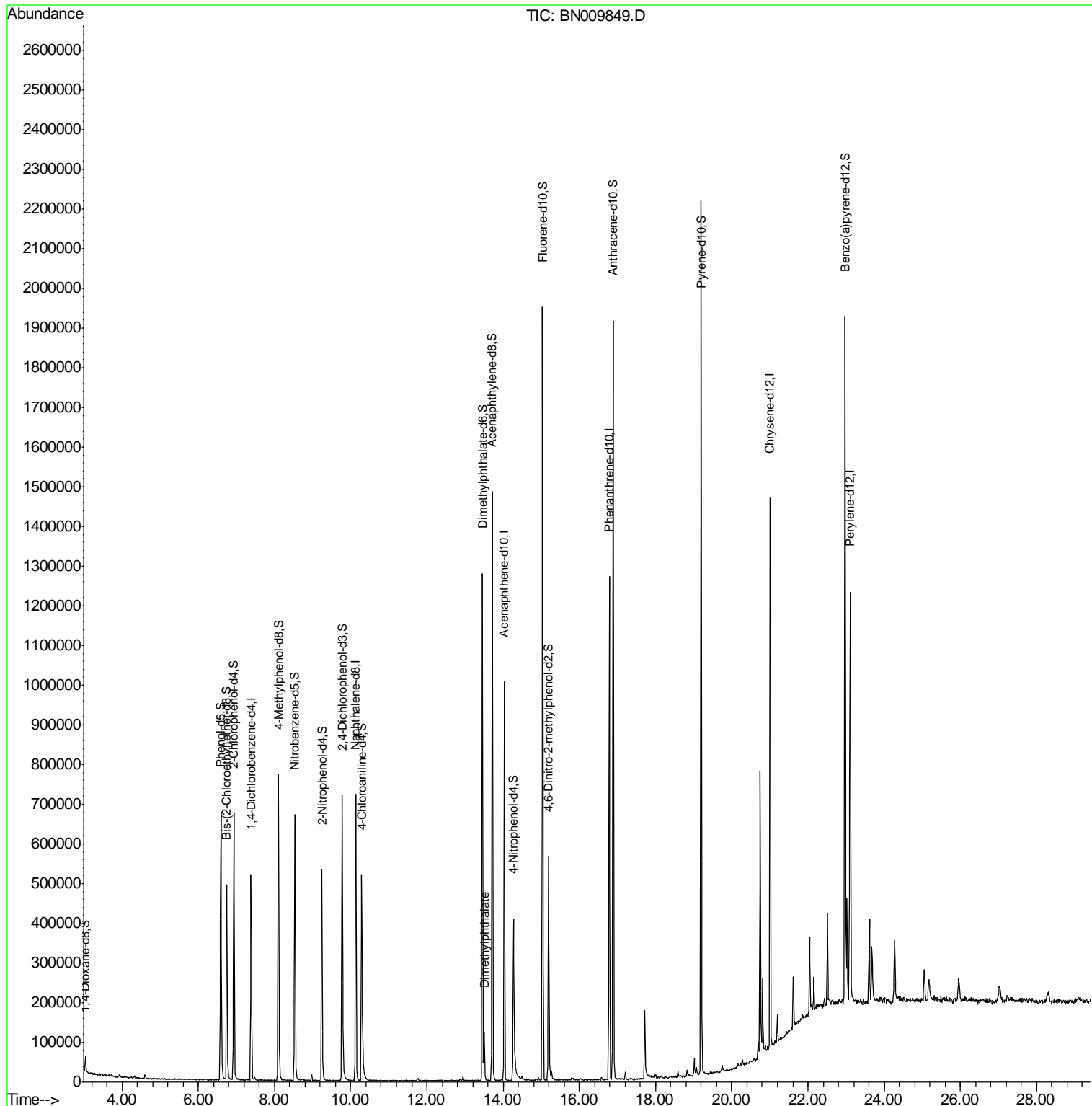
Target Compounds	R.T.	QIon	Response	Conc	Units	Ovalue
45) Dimethylphthalate	13.50	163	71261	2.973	ng/ul	98

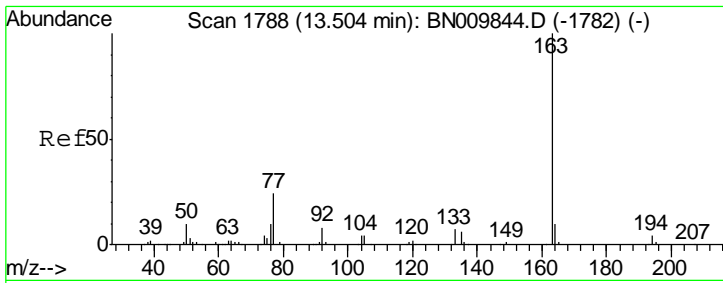
(#) = qualifier out of range (m) = manual integration (+) = signals summed

Data Path : Z:\SVOASRV\HPCHEM1\BNA N\DATA\BN022220\
 Data File : BN009849.D
 Acq On : 22 Feb 2020 17:10
 Operator : CG/JU
 Sample : L1516-11
 Misc :
 ALS Vial : 38 Sample Multiplier: 1

Instrument :
 BNA_N
 ClientSampleId :
 DBD29

Quant Time: Feb 24 02:01:27 2020
 Quant Method : Z:\SVOASRV\HPCHEM1\BNA_N\METHODS\SOM-EPA-BN021220MA.M
 Quant Title : SVOA CALIBRATION
 QLast Update : Wed Feb 19 04:46:48 2020
 Response via : Initial Calibration





#45
 Dimethylphthalate
 Concen: 2.973 ng/ul
 RT: 13.50 min Scan# 1788
 Delta R.T. -0.02 min
 Lab File: BN009849.D
 Acq: 22 Feb 2020 17:10

Instrument :
 BNA_N
 ClientSampled :
 DBD29

Tot Ion:163 Resp: 71261

Ion	Ratio	Lower	Upper
163	100		
194	4.7	3.4	5.0
164	9.0	8.0	12.0

