

Data Path : Z:\svoasrv\HPCHEM1\BNA_N\Data\BN022424\
 Data File : BN030018.D
 Acq On : 25 Feb 2024 07:43
 Operator : MA/JU
 Sample : P1532-07
 Misc :
 ALS Vial : 68 Sample Multiplier: 1

Instrument :
 BNA_N
 ClientSampleId :
 RE104D3-20240216

Quant Time: Feb 26 02:48:58 2024
 Quant Method : Z:\svoasrv\HPCHEM1\BNA_N\Methods\8270-SIM-BN012924.M
 Quant Title : ASP BNA STANDARDS FOR 5 POINT CALIBRATION
 QLast Update : Mon Feb 26 02:39:45 2024
 Response via : Initial Calibration

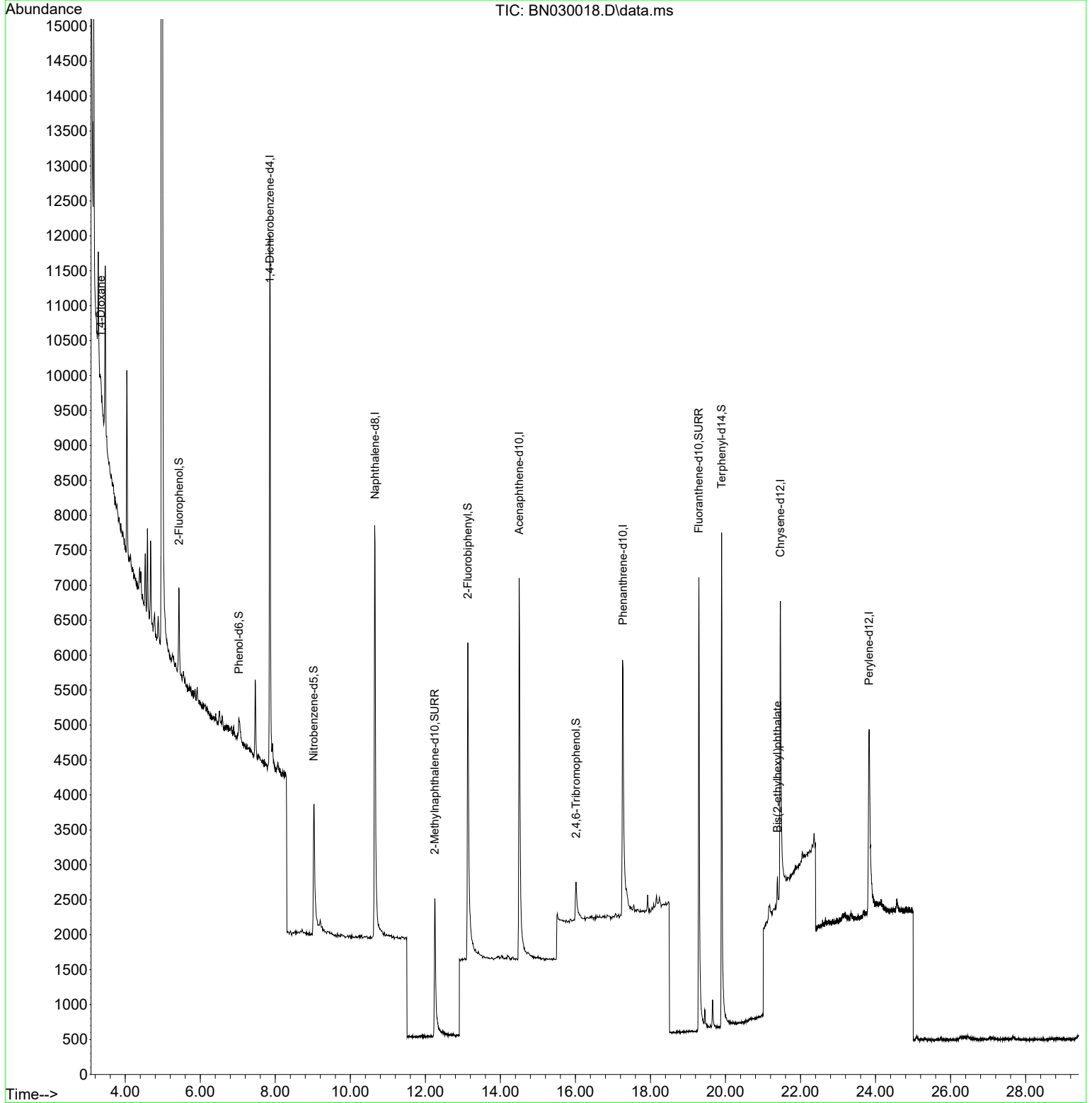
Compound	R.T.	QIon	Response	Conc	Units	Dev(Min)	
Internal Standards							
1) 1,4-Dichlorobenzene-d4	7.854	152	4290	0.400	ng	0.00	
7) Naphthalene-d8	10.658	136	10695	0.400	ng	0.01	
13) Acenaphthene-d10	14.500	164	4851	0.400	ng	0.01	
19) Phenanthrene-d10	17.268	188	9937	0.400	ng	0.01	
29) Chrysene-d12	21.465	240	6977	0.400	ng	# 0.00	
35) Perylene-d12	23.829	264	6462	0.400	ng	# 0.00	
System Monitoring Compounds							
4) 2-Fluorophenol	5.435	112	1072	0.104	ng	0.00	
5) Phenol-d6	7.031	99	576	0.048	ng	0.00	
8) Nitrobenzene-d5	9.025	82	2844	0.319	ng	0.01	
11) 2-Methylnaphthalene-d10	12.253	152	4484	0.308	ng	0.00	
14) 2,4,6-Tribromophenol	16.014	330	550	0.353	ng	0.01	
15) 2-Fluorobiphenyl	13.132	172	6354	0.305	ng	0.01	
27) Fluoranthene-d10	19.289	212	10040	0.417	ng	0.00	
31) Terphenyl-d14	19.898	244	9410	0.543	ng	0.00	
Target Compounds							
2) 1,4-Dioxane	3.355	88	147	0.024	ng	#	25
34) Bis(2-ethylhexyl)phtha...	21.384	149	614	0.038	ng	#	91

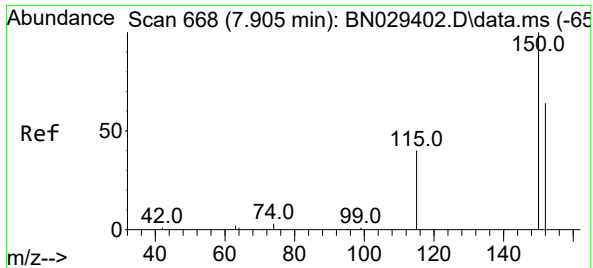
(#) = qualifier out of range (m) = manual integration (+) = signals summed

Data Path : Z:\svoasrv\HPCHEM1\BNA_N\Data\BN022424\
 Data File : BN030018.D
 Acq On : 25 Feb 2024 07:43
 Operator : MA/JU
 Sample : P1532-07
 Misc :
 ALS Vial : 68 Sample Multiplier: 1

Instrument :
 BNA_N
 ClientSampleId :
 RE104D3-20240216

Quant Time: Feb 26 02:48:58 2024
 Quant Method : Z:\svoasrv\HPCHEM1\BNA_N\Methods\8270-SIM-BN012924.M
 Quant Title : ASP BNA STANDARDS FOR 5 POINT CALIBRATION
 QLast Update : Mon Feb 26 02:39:45 2024
 Response via : Initial Calibration



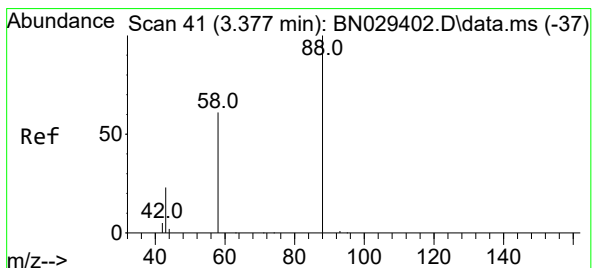
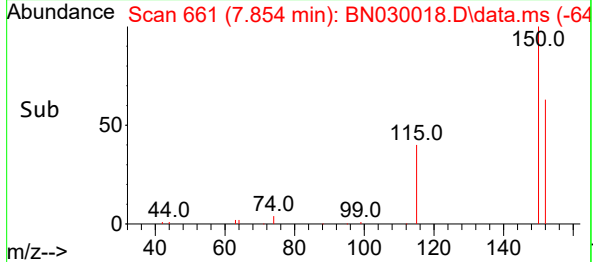
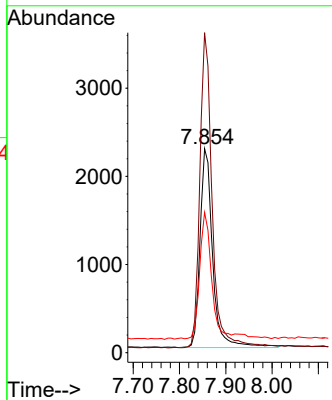
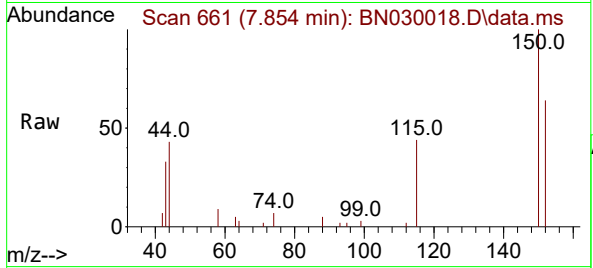


#1
 1,4-Dichlorobenzene-d4
 Concen: 0.400 ng
 RT: 7.854 min Scan# 60
 Delta R.T. 0.000 min
 Lab File: BN030018.D
 Acq: 25 Feb 2024 07:43

Instrument :
 BNA_N
 ClientSampleId :
 RE104D3-20240216

Tgt Ion:152 Resp: 4290

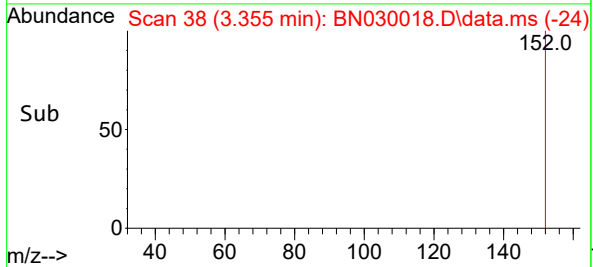
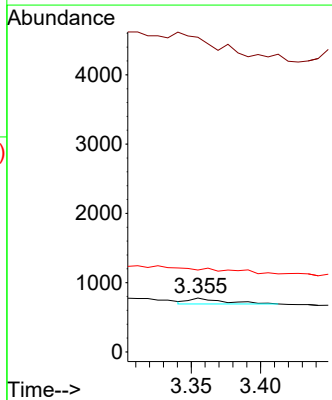
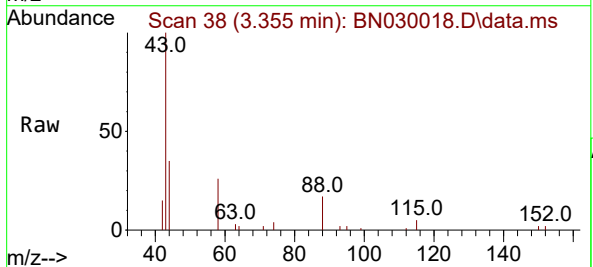
Ion	Ratio	Lower	Upper
152	100		
150	156.9	123.0	184.4
115	68.8	51.4	77.0

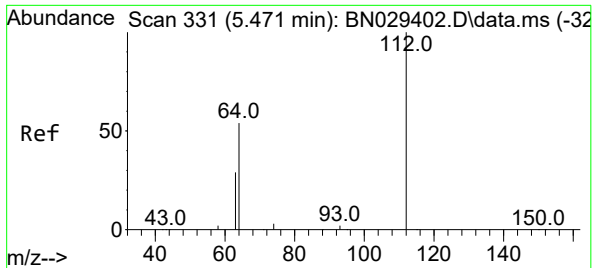


#2
 1,4-Dioxane
 Concen: 0.024 ng
 RT: 3.355 min Scan# 38
 Delta R.T. -0.000 min
 Lab File: BN030018.D
 Acq: 25 Feb 2024 07:43

Tgt Ion: 88 Resp: 147

Ion	Ratio	Lower	Upper
88	100		
43	0.0	23.3	34.9#
58	0.0	53.8	80.6#



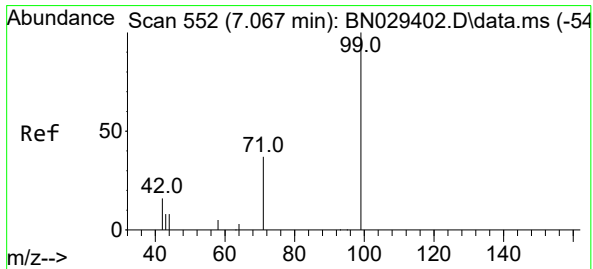
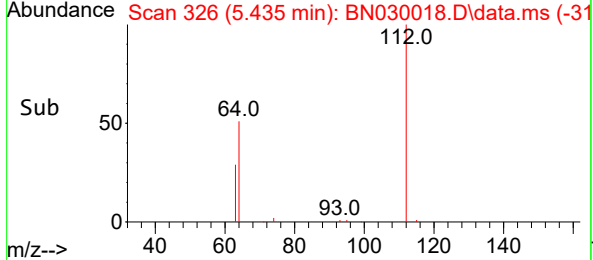
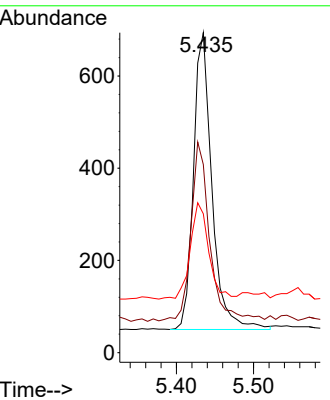
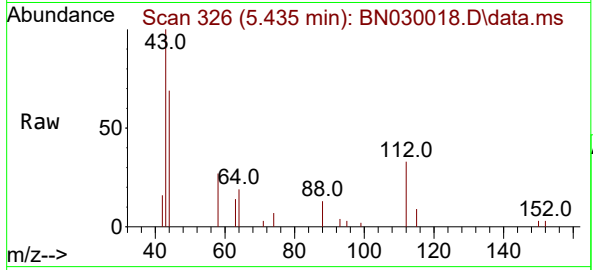


#4
 2-Fluorophenol
 Concen: 0.104 ng
 RT: 5.435 min Scan# 31
 Delta R.T. 0.007 min
 Lab File: BN030018.D
 Acq: 25 Feb 2024 07:43

Instrument : BNA_N
 ClientSampleId : RE104D3-20240216

Tgt Ion: 112 Resp: 1072

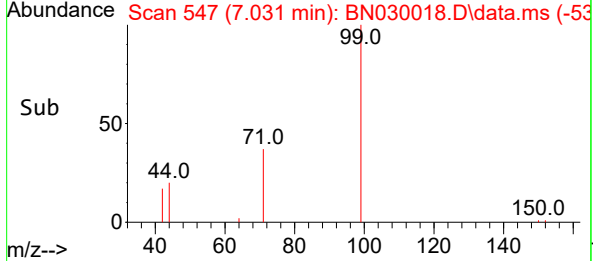
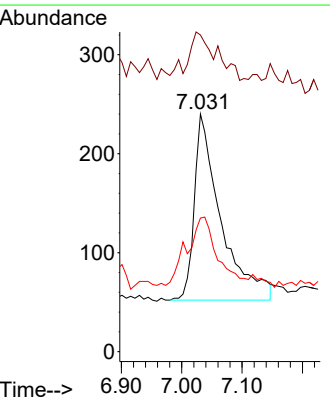
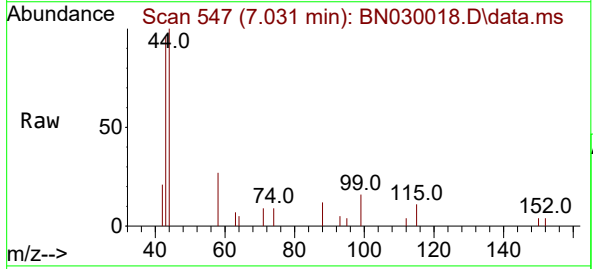
Ion	Ratio	Lower	Upper
112	100		
64	62.1	47.2	70.8
63	32.4	25.8	38.6

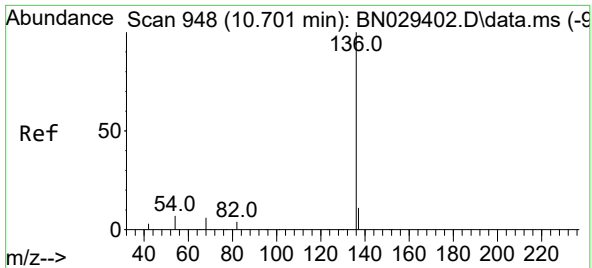


#5
 Phenol-d6
 Concen: 0.048 ng
 RT: 7.031 min Scan# 547
 Delta R.T. 0.007 min
 Lab File: BN030018.D
 Acq: 25 Feb 2024 07:43

Tgt Ion: 99 Resp: 576

Ion	Ratio	Lower	Upper
99	100		
42	29.5	16.9	25.3
71	41.7	30.0	45.0



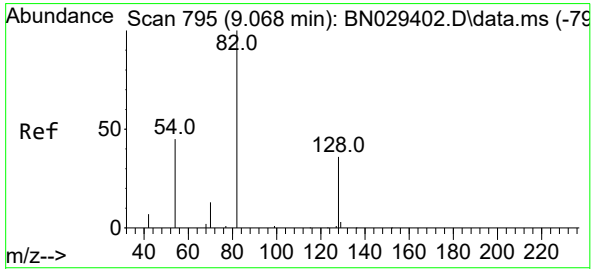
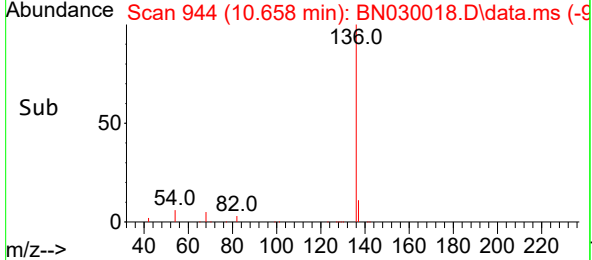
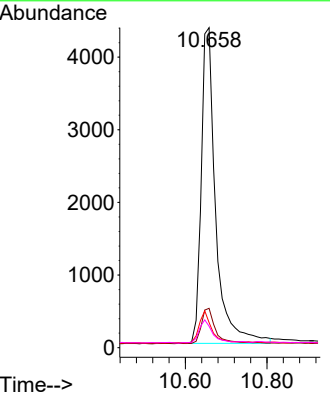
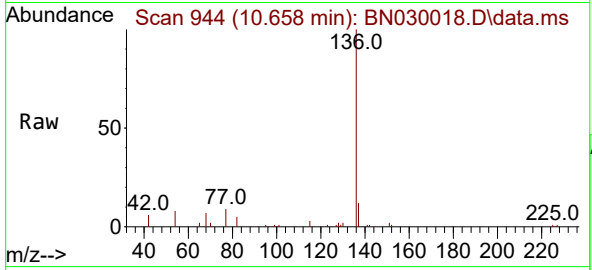


#7
 Naphthalene-d8
 Concen: 0.400 ng
 RT: 10.658 min Scan# 94
 Delta R.T. 0.011 min
 Lab File: BN030018.D
 Acq: 25 Feb 2024 07:43

Instrument : BNA_N
 ClientSampleId : RE104D3-20240216

Tgt Ion:136 Resp: 10695

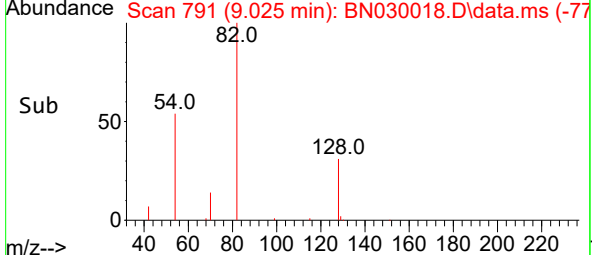
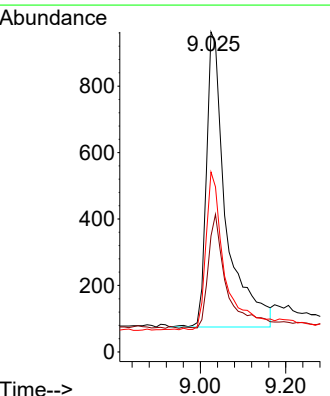
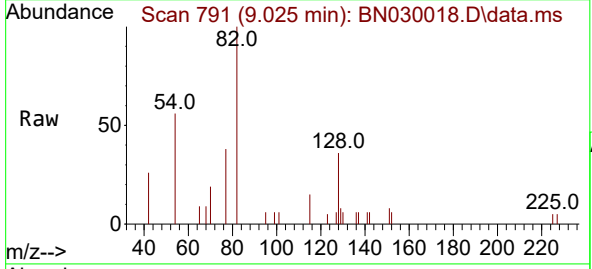
Ion	Ratio	Lower	Upper
136	100		
137	12.3	9.7	14.5
54	7.9	6.6	10.0
68	6.7	5.7	8.5

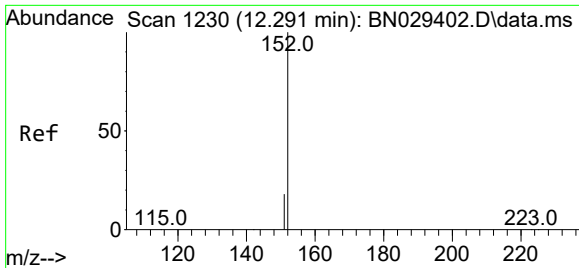


#8
 Nitrobenzene-d5
 Concen: 0.319 ng
 RT: 9.025 min Scan# 791
 Delta R.T. 0.011 min
 Lab File: BN030018.D
 Acq: 25 Feb 2024 07:43

Tgt Ion: 82 Resp: 2844

Ion	Ratio	Lower	Upper
82	100		
128	36.2	31.6	47.4
54	56.2	38.2	57.4

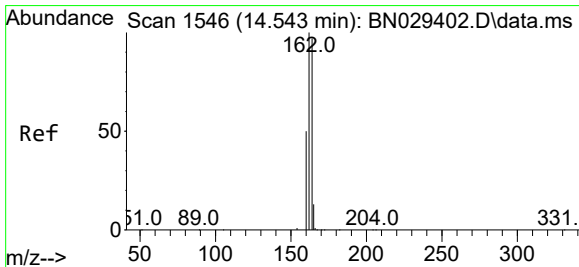
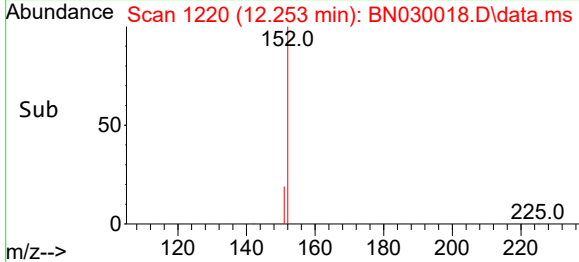
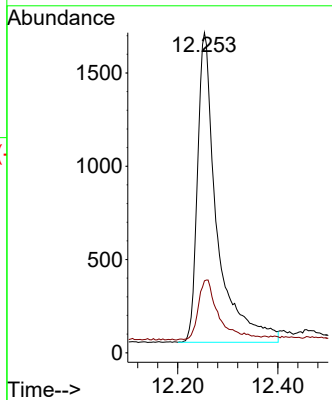
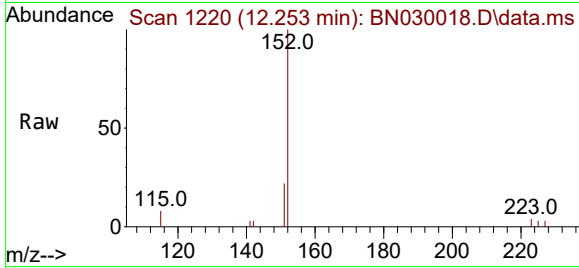




#11
 2-Methylnaphthalene-d10
 Concen: 0.308 ng
 RT: 12.253 min Scan# 11
 Delta R.T. 0.008 min
 Lab File: BN030018.D
 Acq: 25 Feb 2024 07:43

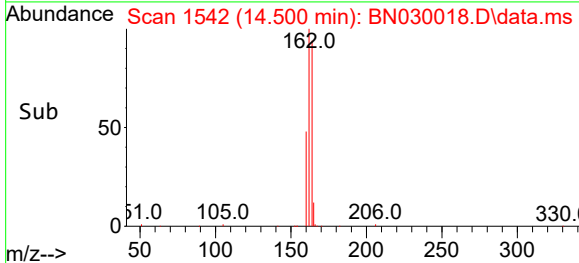
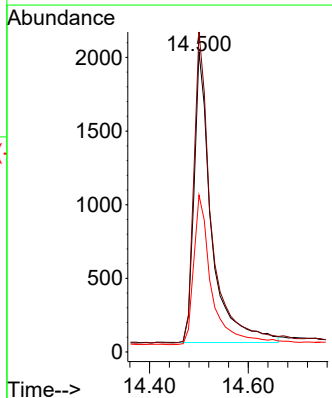
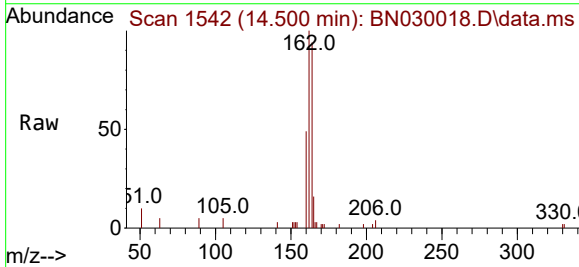
Instrument :
 BNA_N
 ClientSampleId :
 RE104D3-20240216

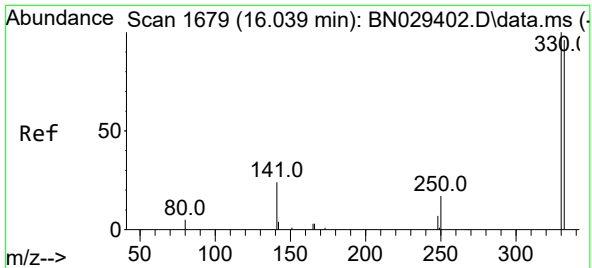
Tgt Ion:152 Resp: 4484
 Ion Ratio Lower Upper
 152 100
 151 19.6 17.1 25.7



#13
 Acenaphthene-d10
 Concen: 0.400 ng
 RT: 14.500 min Scan# 1542
 Delta R.T. 0.011 min
 Lab File: BN030018.D
 Acq: 25 Feb 2024 07:43

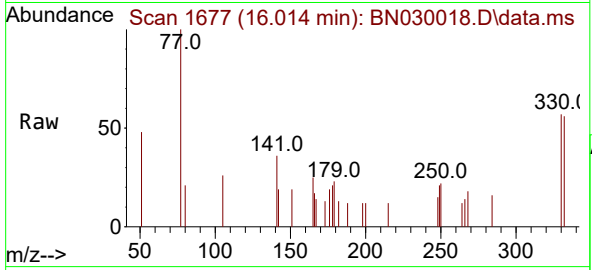
Tgt Ion:164 Resp: 4851
 Ion Ratio Lower Upper
 164 100
 162 106.5 82.6 123.8
 160 52.2 41.5 62.3



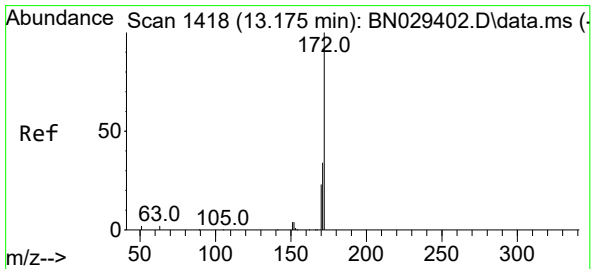
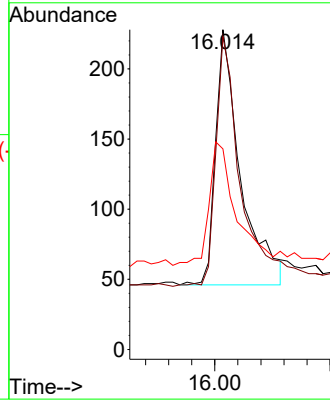
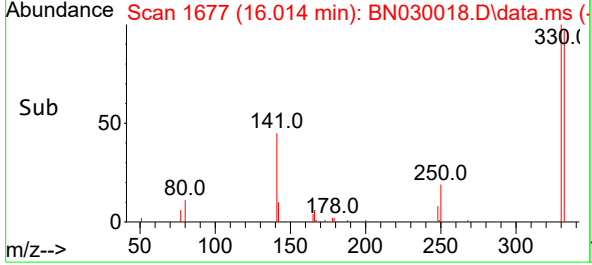


#14
 2,4,6-Tribromophenol
 Concen: 0.353 ng
 RT: 16.014 min Scan# 11
 Delta R.T. 0.012 min
 Lab File: BN030018.D
 Acq: 25 Feb 2024 07:43

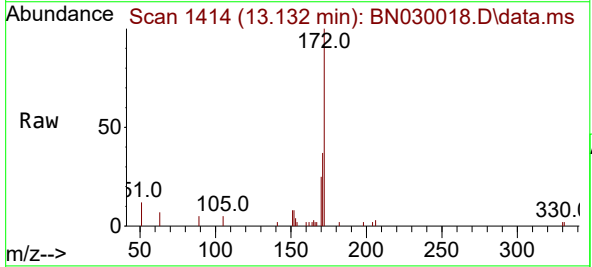
Instrument :
 BNA_N
 ClientSampleId :
 RE104D3-20240216



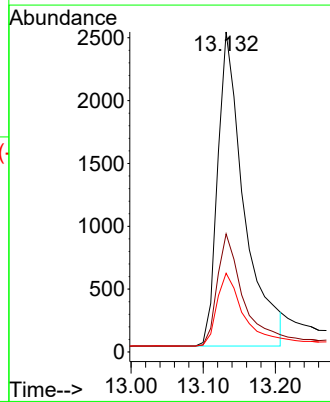
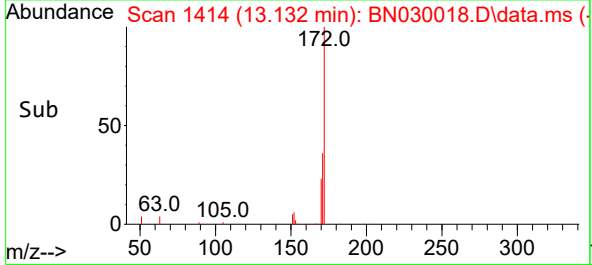
Tgt Ion:330 Resp: 550
 Ion Ratio Lower Upper
 330 100
 332 93.6 76.0 114.0
 141 48.2 43.4 65.2

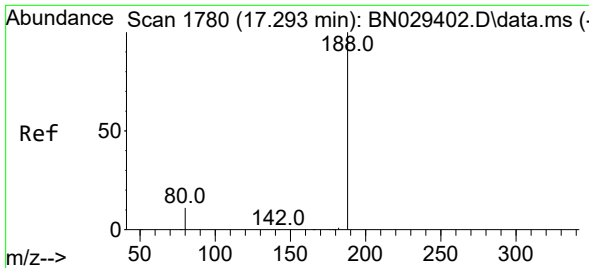


#15
 2-Fluorobiphenyl
 Concen: 0.305 ng
 RT: 13.132 min Scan# 1414
 Delta R.T. 0.011 min
 Lab File: BN030018.D
 Acq: 25 Feb 2024 07:43



Tgt Ion:172 Resp: 6354
 Ion Ratio Lower Upper
 172 100
 171 36.9 28.0 42.0
 170 24.6 18.7 28.1

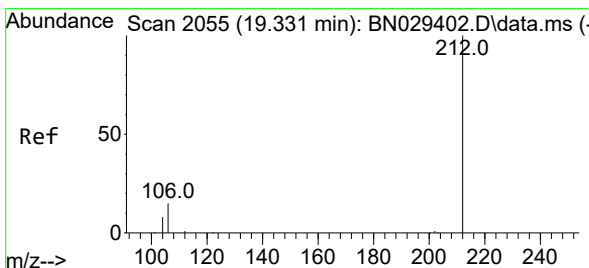
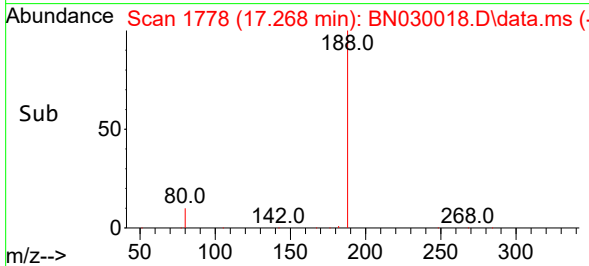
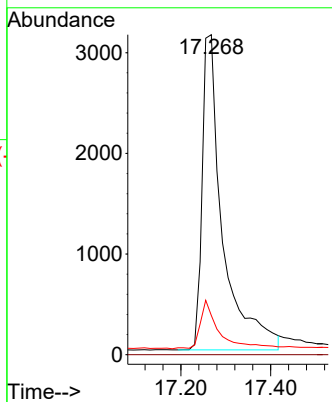
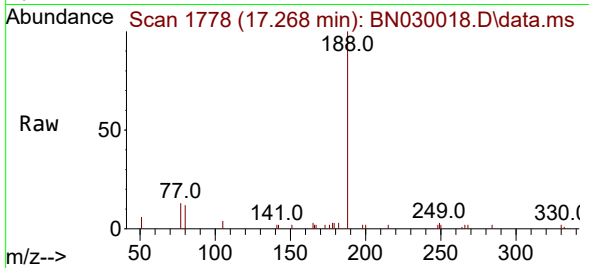




#19
 Phenanthrene-d10
 Concen: 0.400 ng
 RT: 17.268 min Scan# 11
 Delta R.T. 0.012 min
 Lab File: BN030018.D
 Acq: 25 Feb 2024 07:43

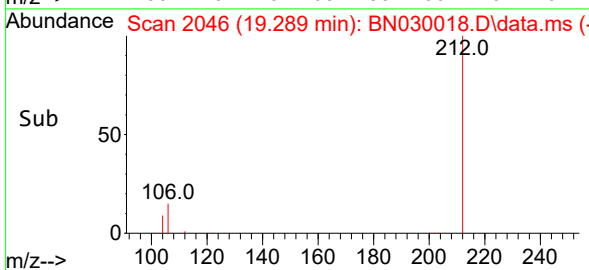
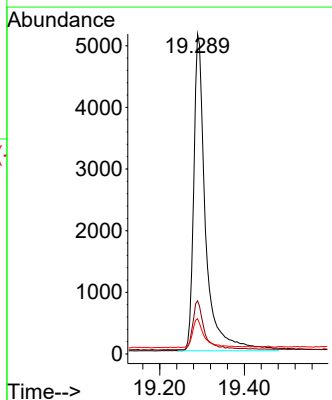
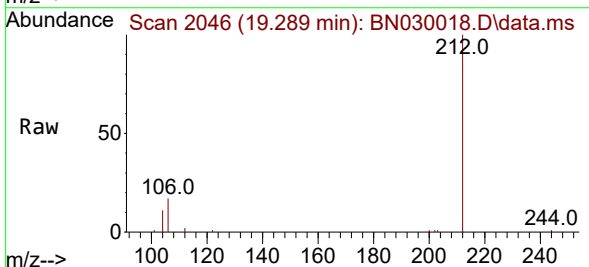
Instrument :
 BNA_N
 ClientSampleId :
 RE104D3-20240216

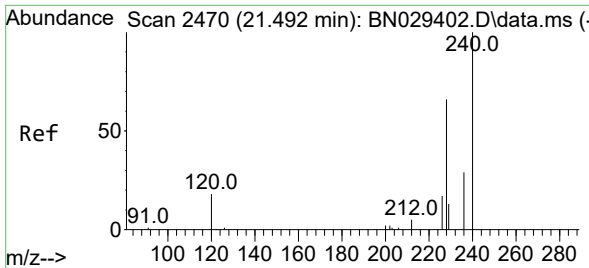
Tgt Ion	Resp	Lower	Upper
188	100		
94	0.0	0.0	0.0
80	12.2	10.0	15.0



#27
 Fluoranthene-d10
 Concen: 0.417 ng
 RT: 19.289 min Scan# 2046
 Delta R.T. -0.000 min
 Lab File: BN030018.D
 Acq: 25 Feb 2024 07:43

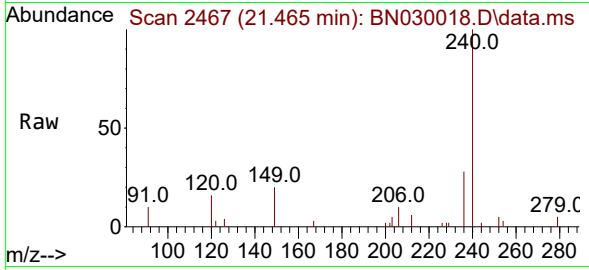
Tgt Ion	Resp	Lower	Upper
212	100		
106	15.1	13.2	19.8
104	9.0	7.7	11.5



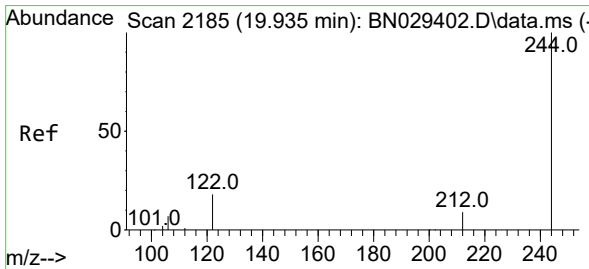
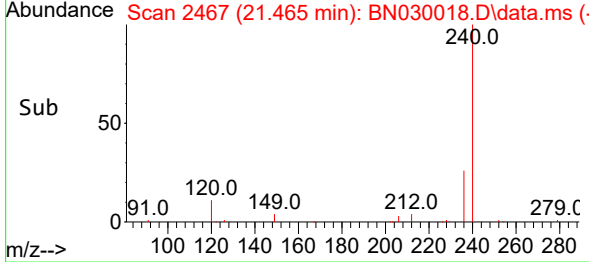
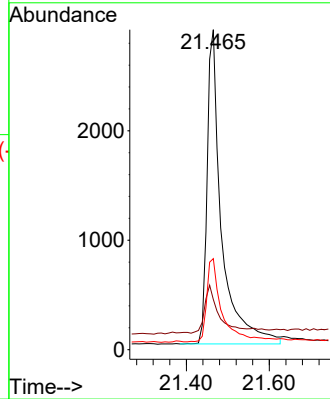


#29
 Chrysene-d12
 Concen: 0.400 ng
 RT: 21.465 min Scan# 2470
 Delta R.T. 0.009 min
 Lab File: BN030018.D
 Acq: 25 Feb 2024 07:43

Instrument :
 BNA_N
 ClientSampleId :
 RE104D3-20240216

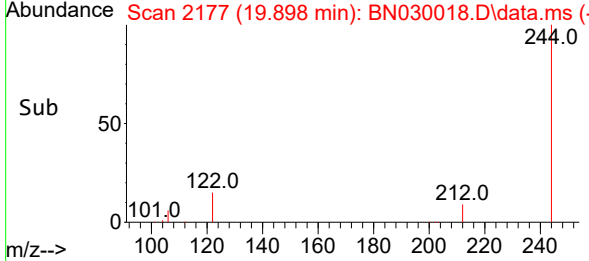
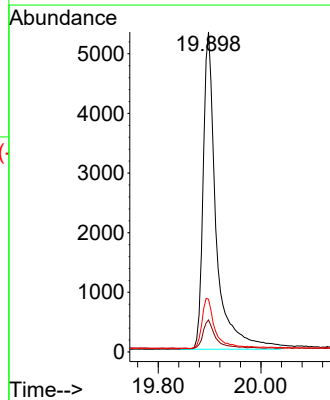
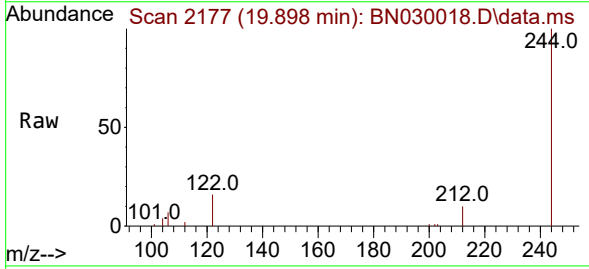


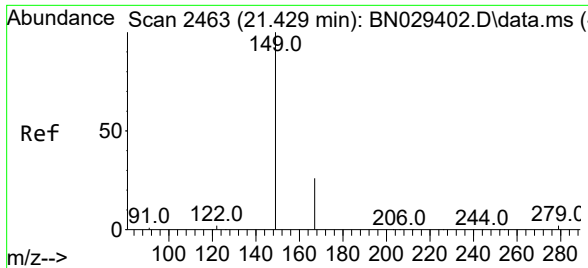
Tgt Ion:240 Resp: 6977
 Ion Ratio Lower Upper
 240 100
 120 15.7 16.7 25.1#
 236 28.4 23.9 35.9



#31
 Terphenyl-d14
 Concen: 0.543 ng
 RT: 19.898 min Scan# 2177
 Delta R.T. -0.000 min
 Lab File: BN030018.D
 Acq: 25 Feb 2024 07:43

Tgt Ion:244 Resp: 9410
 Ion Ratio Lower Upper
 244 100
 212 10.0 8.2 12.4
 122 16.4 15.6 23.4



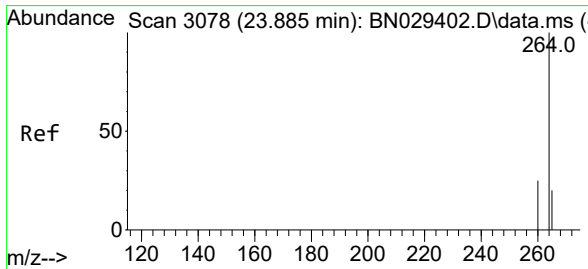
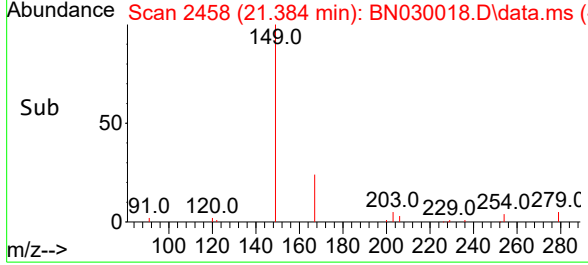
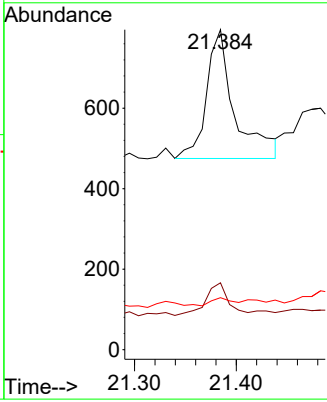
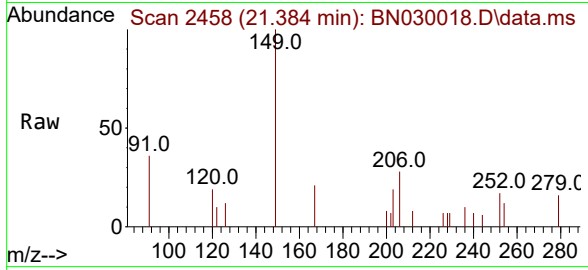


#34
 Bis(2-ethylhexyl)phthalate
 Concen: 0.038 ng
 RT: 21.384 min Scan# 2463
 Delta R.T. -0.000 min
 Lab File: BN030018.D
 Acq: 25 Feb 2024 07:43

Instrument : BNA_N
 ClientSampleId : RE104D3-20240216

Tgt Ion:149 Resp: 614

Ion	Ratio	Lower	Upper
149	100		
167	20.4	20.1	30.1
279	4.6	2.5	3.7#



#35
 Perylene-d12
 Concen: 0.400 ng
 RT: 23.829 min Scan# 3059
 Delta R.T. 0.009 min
 Lab File: BN030018.D
 Acq: 25 Feb 2024 07:43

Tgt Ion:264 Resp: 6462

Ion	Ratio	Lower	Upper
264	100		
260	27.4	21.2	31.8
265	85.4	41.5	62.3#

