

Data Path : Z:\SVOASRV\HPCHEM1\BNA N\DATA\BN030320\
 Data File : BN010066.D
 Acq On : 03 Mar 2020 17:40
 Operator : CG/JU
 Sample : L1507-17MEDL 10X
 Misc :
 ALS Vial : 11 Sample Multiplier: 1

Instrument :
 BNA_N
 ClientSampled :
 DBD15MEDL

Manual Integrations
 APPROVED

mohammad
 3/4/2020 7:51:51 AM

Quant Time: Mar 03 18:21:40 2020
 Quant Method : Z:\SVOASRV\HPCHEM1\BNA_N\METHODS\SOM-EPA-BN021220MA.M
 Quant Title : SVOA CALIBRATION
 QLast Update : Tue Mar 03 12:28:17 2020
 Response via : Initial Calibration

Internal Standards	R.T.	QIon	Response	Conc	Units	Dev(Min)
1) 1,4-Dichlorobenzene-d4	7.37	152	64798	20.00	ng/ul	0.00
18) Naphthalene-d8	10.11	136	320951	20.00	ng/ul	0.00
36) Acenaphthene-d10	14.00	164	202614	20.00	ng/ul	0.00
62) Phenanthrene-d10	16.76	188	430858	20.00	ng/ul	0.00
78) Chrysene-d12	20.99	240	441692	20.00	ng/ul	0.00
86) Perylene-d12	23.09	264	510498	20.00	ng/ul	0.00

System Monitoring Compounds

3) 1,4-Dioxane-d8	0.00	96	0	0.00	ng/uL	
5) Phenol-d5	0.00	99	0d	0.00	ng/ul	
7) Bis-(2-Chloroethyl)ether-d	6.75	67	4102	1.08	ng/ul	0.02
9) 2-Chlorophenol-d4	6.92	132	4269	1.03	ng/ul	0.01
13) 4-Methylphenol-d8	0.00	113	0d	0.00	ng/ul	
19) Nitrobenzene-d5	0.00	128	0d	0.00	ng/ul	
22) 2-Nitrophenol-d4	0.00	143	0d	0.00	ng/ul	
26) 2,4-Dichlorophenol-d3	0.00	165	0d	0.00	ng/ul	
29) 4-Chloroaniline-d4	0.00	131	0d	0.00	ng/ul	
44) Dimethylphthalate-d6	13.45	166	23051	1.52	ng/ul	0.01
47) Acenaphthylene-d8	13.70	160	23507	1.32	ng/ul	0.00
52) 4-Nitrophenol-d4	0.00	143	0	0.00	ng/ul	
58) Fluorene-d10	15.02	176	19399	1.48	ng/ul	0.00
63) 4,6-Dinitro-2-methylphenol	0.00	200	0	0.00	ng/ul	
71) Anthracene-d10	16.87	188	31857	1.61	ng/ul	0.01
79) Pyrene-d10	19.18	212	34183	1.48	ng/ul	0.00
90) Benzo(a)pyrene-d12	22.96	264	36572	1.43	ng/ul	0.00

Target Compounds

Target Compounds	R.T.	QIon	Response	Conc	Units	Ovalue
28) Naphthalene	10.16	128	74572	4.309	ng/ul	99
34) 2-Methylnaphthalene	11.79	142	50146	4.173	ng/ul	90
41) 1,1'-Biphenyl	12.84	154	17343	1.114	ng/ul#	95
50) Acenaphthene	14.07	153	99703	7.539	ng/ul	98
54) Dibenzofuran	14.42	168	87697	4.724	ng/ul	99
59) Fluorene	15.07	166	76461	4.908	ng/ul	99
70) Phenanthrene	16.81	178	447279	18.190	ng/ul	99
72) Anthracene	16.90	178	45070m	1.793	ng/ul	
77) Fluoranthene	18.84	202	298224	10.354	ng/ul	95
80) Pyrene	19.21	202	237873	7.470	ng/ul#	92
83) Benzo(a)anthracene	20.97	228	64769	2.134	ng/ul	98
85) Chrysene	21.03	228	42983	1.438	ng/ul	99

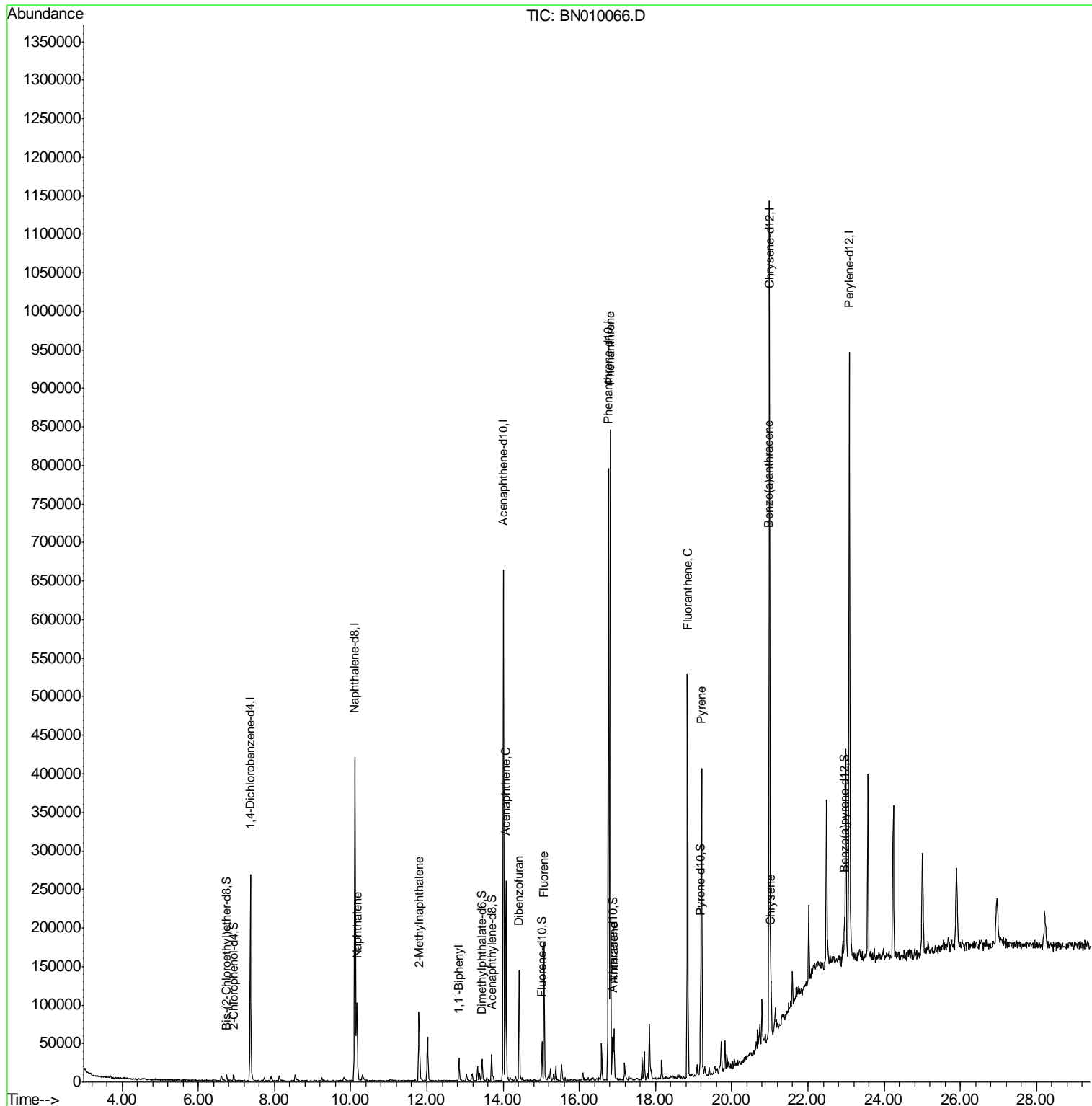
(#) = qualifier out of range (m) = manual integration (+) = signals summed

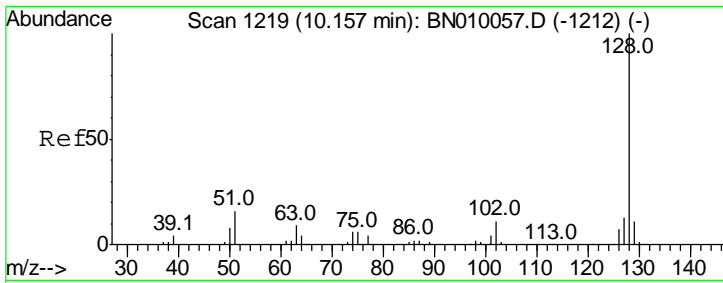
Data Path : Z:\SVOASRV\HPCHEM1\BNA N\DATA\BN030320\
 Data File : BN010066.D
 Acq On : 03 Mar 2020 17:40
 Operator : CG/JU
 Sample : L1507-17MEDL 10X
 Misc :
 ALS Vial : 11 Sample Multiplier: 1

Instrument :
 BNA_N
Client Sampled :
 DBD15MEDL

Manual Integrations
APPROVED
 mohammad
 3/4/2020 7:51:51 AM

Quant Time: Mar 03 18:21:40 2020
 Quant Method : Z:\SVOASRV\HPCHEM1\BNA_N\METHODS\SOM-EPA-BN021220MA.M
 Quant Title : SVOA CALIBRATION
 QLast Update : Tue Mar 03 12:28:17 2020
 Response via : Initial Calibration





#28
 Naphthalene
 Concen: 4.309 ng/ul
 RT: 10.16 min Scan# 1220
 Delta R.T. 0.01 min
 Lab File: BN010066.D
 Acq: 03 Mar 2020 17:40

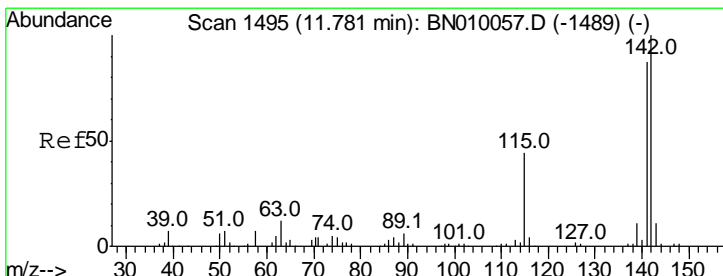
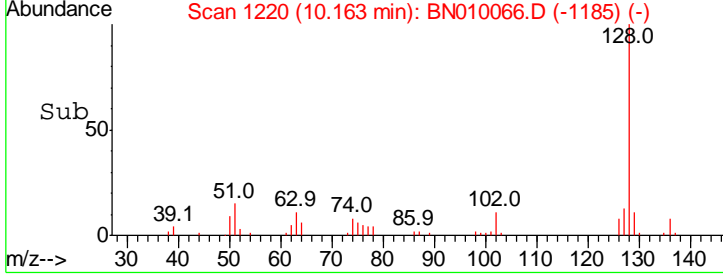
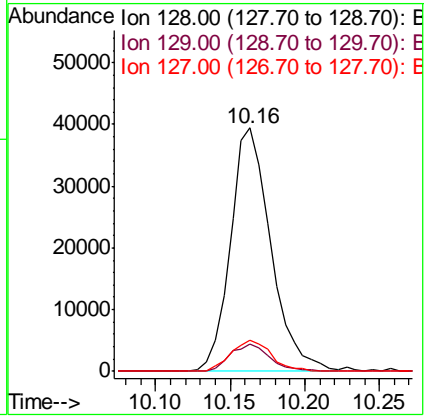
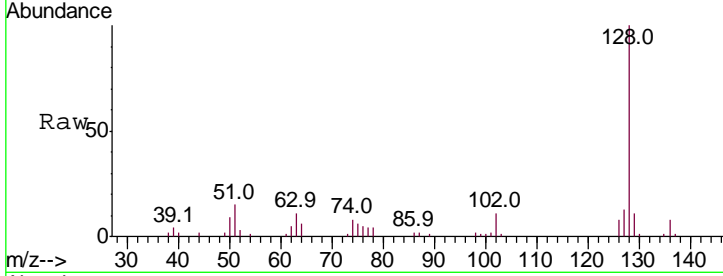
Instrument :
 BNA_N
ClientSampled :
 DBD15MEDL

Tgt Ion: 128 Resp: 74572

Ion	Ratio	Lower	Upper
128	100		
129	11.4	8.6	13.0
127	12.7	10.3	15.5

Manual Integrations
APPROVED

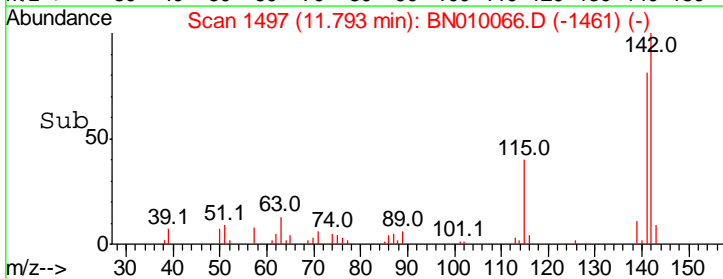
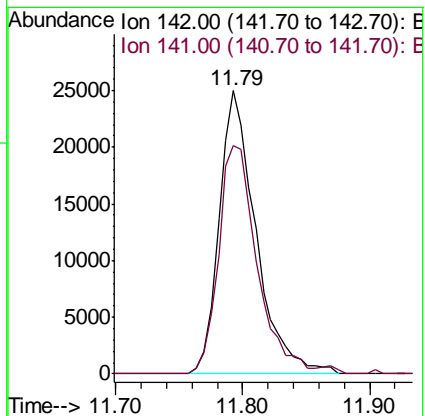
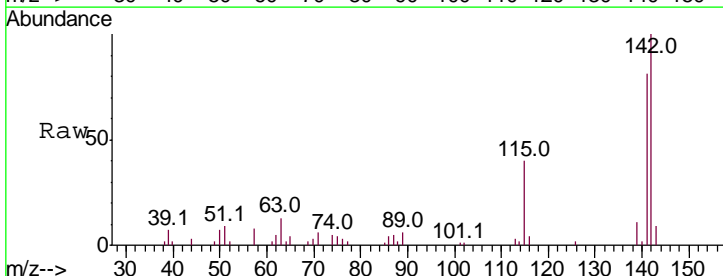
mohammad
 3/4/2020 7:51:51 AM

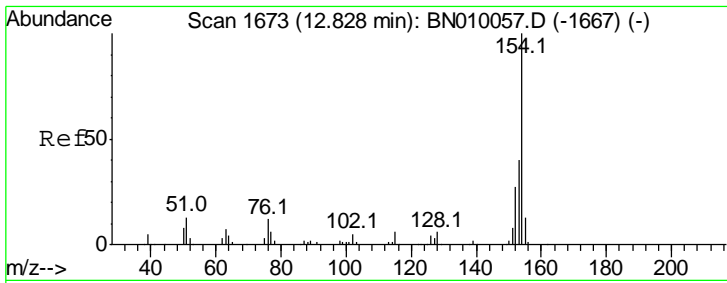


#34
 2-Methylnaphthalene
 Concen: 4.173 ng/ul
 RT: 11.79 min Scan# 1497
 Delta R.T. 0.01 min
 Lab File: BN010066.D
 Acq: 03 Mar 2020 17:40

Tgt Ion: 142 Resp: 50146

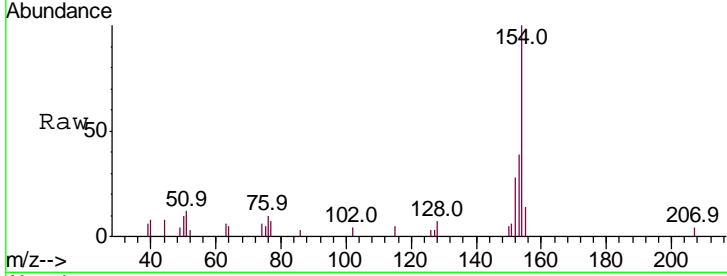
Ion	Ratio	Lower	Upper
142	100		
141	80.7	72.1	108.1





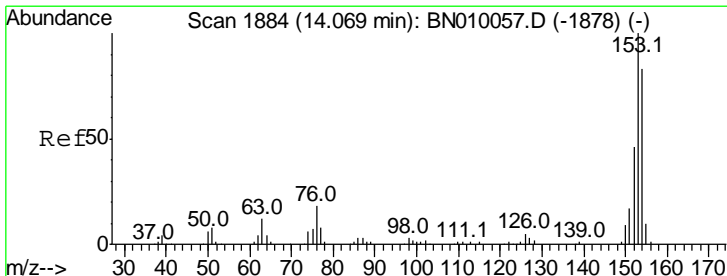
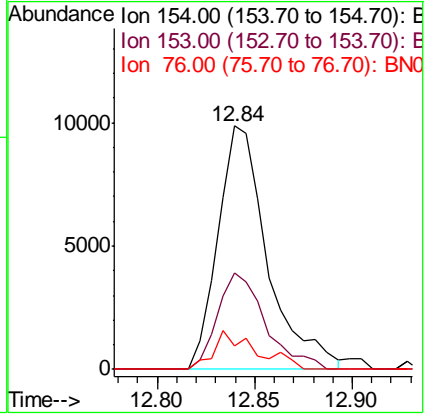
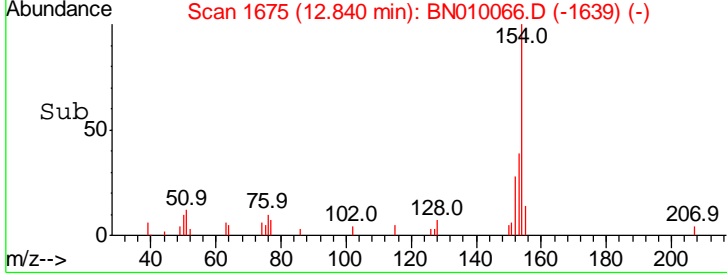
#41
 1,1'-Biphenyl
 Concen: 1.114 ng/ul
 RT: 12.84 min Scan# 1675
 Delta R.T. 0.01 min
 Lab File: BN010066.D
 Acq: 03 Mar 2020 17:40

Instrument :
 BNA_N
ClientSampled :
 DBD15MEDL

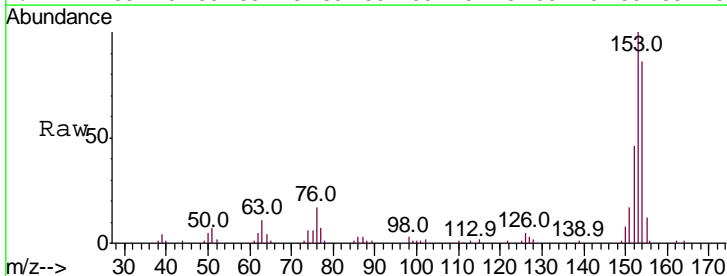


Tgt Ion	Resp	Lower	Upper
154	100		
153	39.4	33.2	49.8
76	9.7	11.0	16.4#

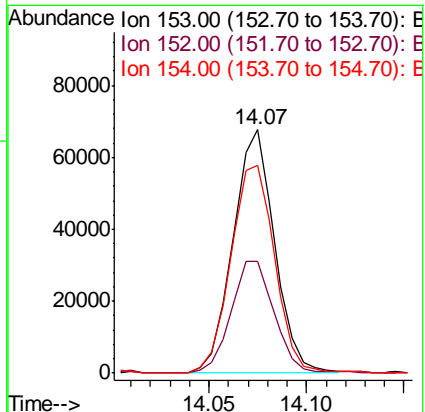
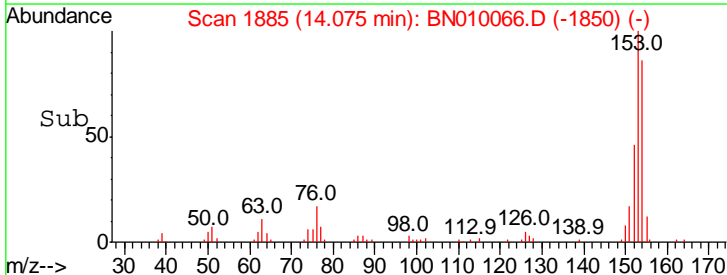
Manual Integrations
APPROVED
 mohammad
 3/4/2020 7:51:51 AM

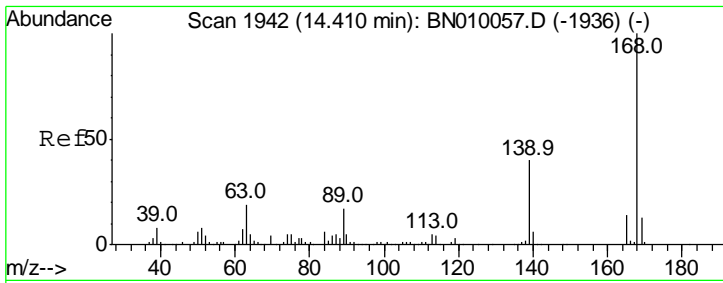


#50
 Acenaphthene
 Concen: 7.539 ng/ul
 RT: 14.07 min Scan# 1885
 Delta R.T. 0.01 min
 Lab File: BN010066.D
 Acq: 03 Mar 2020 17:40



Tgt Ion	Resp	Lower	Upper
153	100		
152	46.1	36.6	54.8
154	85.6	70.6	106.0



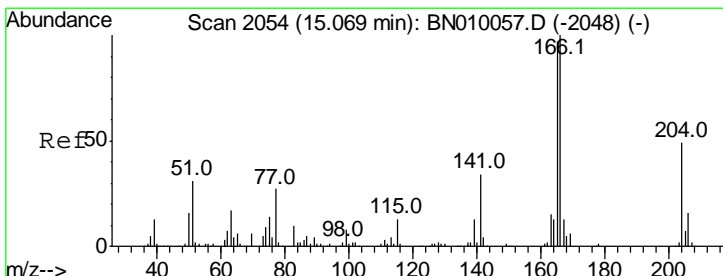
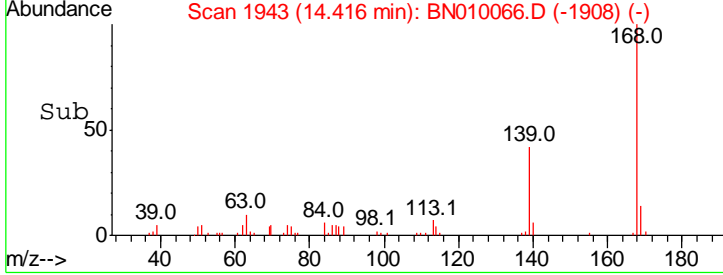
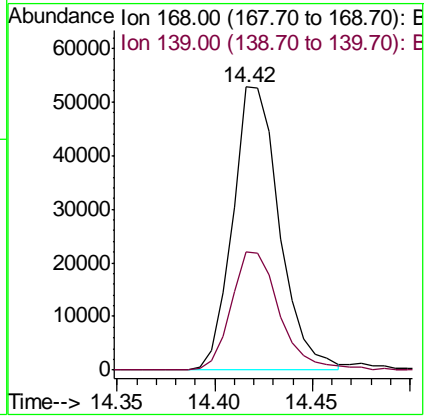
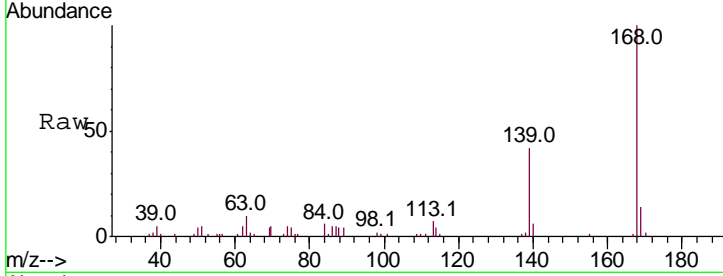


#54
 Dibenzofuran
 Concen: 4.724 ng/ul
 RT: 14.42 min Scan# 1943
 Delta R.T. 0.01 min
 Lab File: BN010066.D
 Acq: 03 Mar 2020 17:40

Instrument :
 BNA_N
 ClientSampled :
 DBD15MEDL

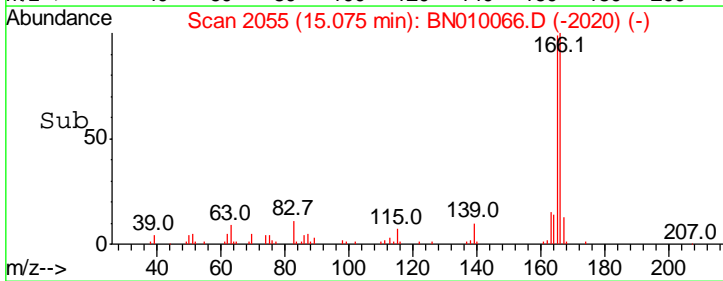
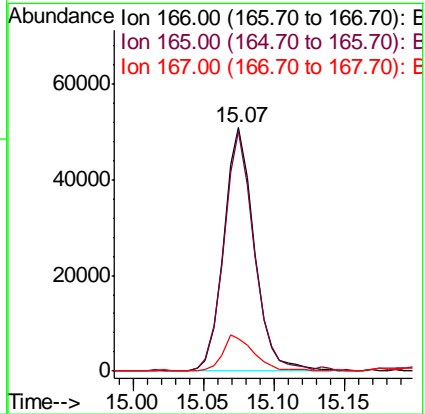
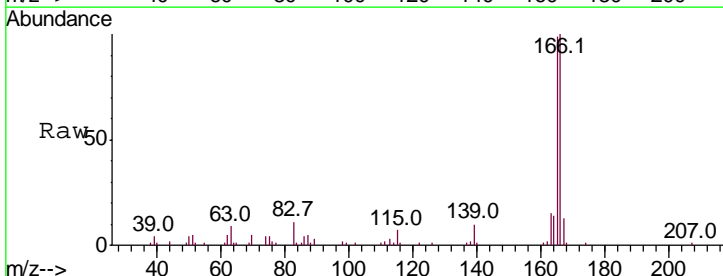
Tgt Ion	Resp	Lower	Upper
168	100		
139	41.8	32.7	49.1

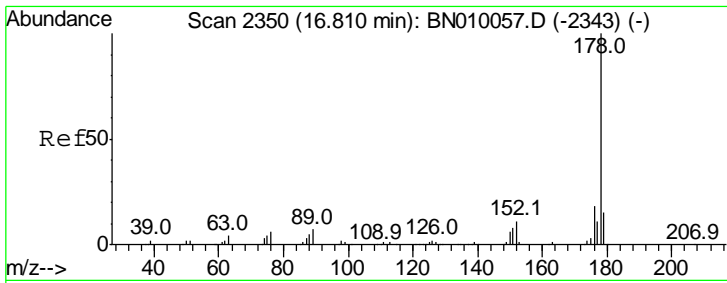
Manual Integrations
APPROVED
 mohammad
 3/4/2020 7:51:51 AM



#59
 Fluorene
 Concen: 4.908 ng/ul
 RT: 15.07 min Scan# 2055
 Delta R.T. 0.01 min
 Lab File: BN010066.D
 Acq: 03 Mar 2020 17:40

Tgt Ion	Resp	Lower	Upper
166	100		
165	98.7	79.8	119.8
167	13.5	10.7	16.1





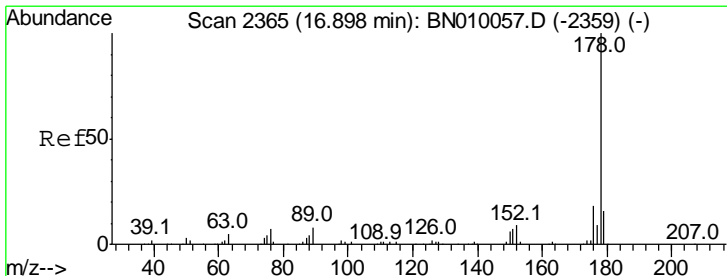
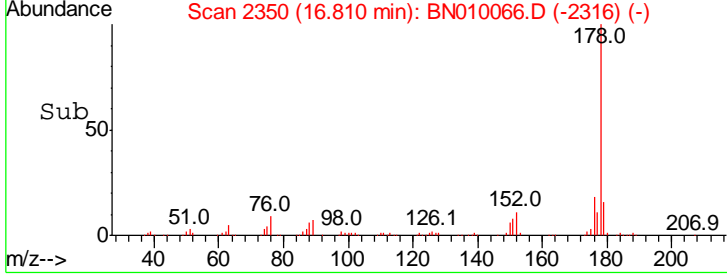
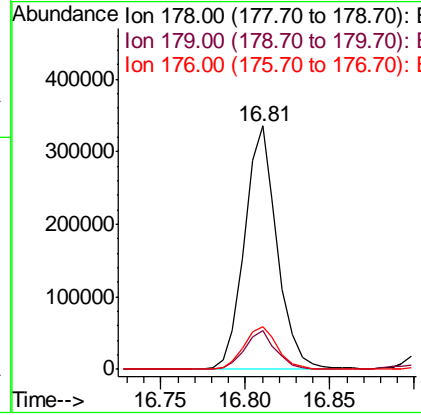
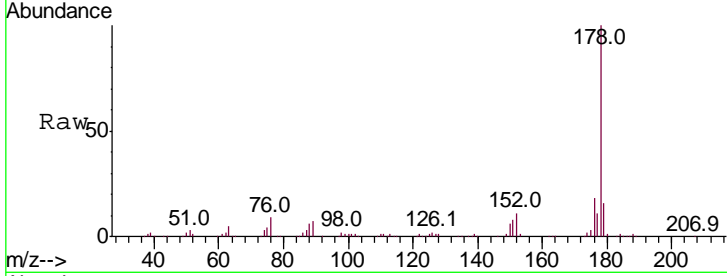
#70
 Phenanthrene
 Concen: 18.190 ng/ul
 RT: 16.81 min Scan# 2350
 Delta R.T. 0.00 min
 Lab File: BN010066.D
 Acq: 03 Mar 2020 17:40

Instrument :
 BNA_N
ClientSampled :
 DBD15MEDL

Tgt Ion	Resp	Lower	Upper
178	100		
179	15.7	12.5	18.7
176	17.7	14.6	22.0

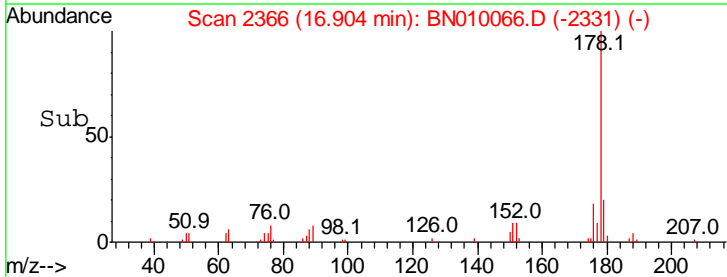
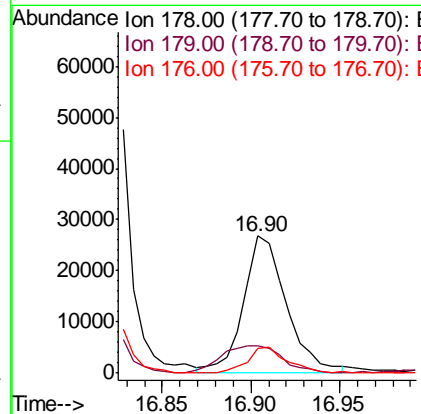
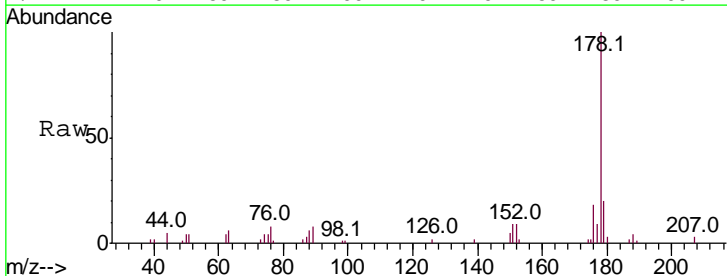
Manual Integrations
APPROVED

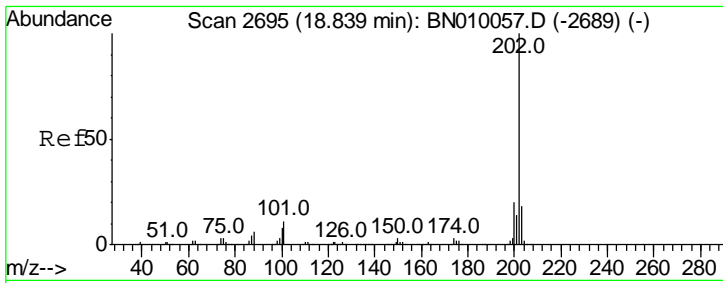
mohammad
 3/4/2020 7:51:51 AM



#72
 Anthracene
 Concen: 1.793 ng/ul m
 RT: 16.90 min Scan# 2366
 Delta R.T. 0.01 min
 Lab File: BN010066.D
 Acq: 03 Mar 2020 17:40

Tgt Ion	Resp	Lower	Upper
178	100		
179	19.6	12.2	18.2#
176	17.7	14.6	21.8





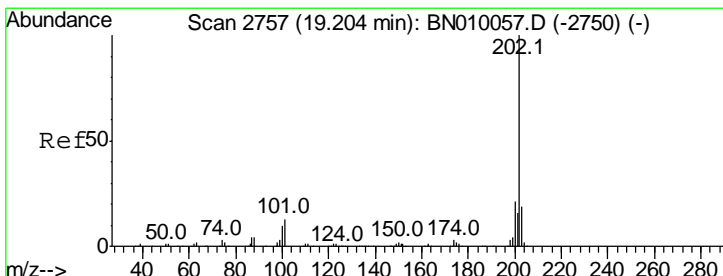
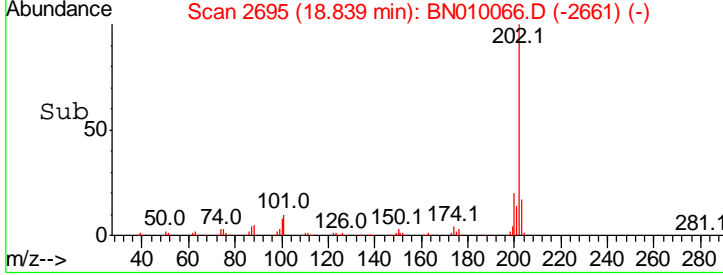
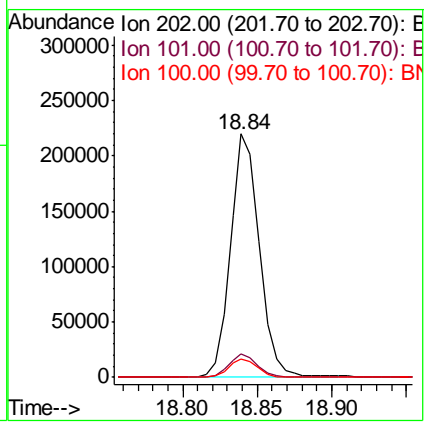
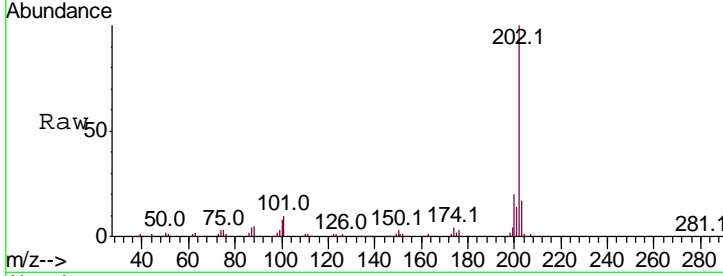
#77
 Fluoranthene
 Concen: 10.354 ng/ul
 RT: 18.84 min Scan# 2695
 Delta R.T. 0.00 min
 Lab File: BN010066.D
 Acq: 03 Mar 2020 17:40

Instrument :
 BNA_N
ClientSampled :
 DBD15MEDL

Tgt Ion: 202 Resp: 298224

Ion	Ratio	Lower	Upper
202	100		
101	9.7	9.4	14.2
100	7.8	7.2	10.8

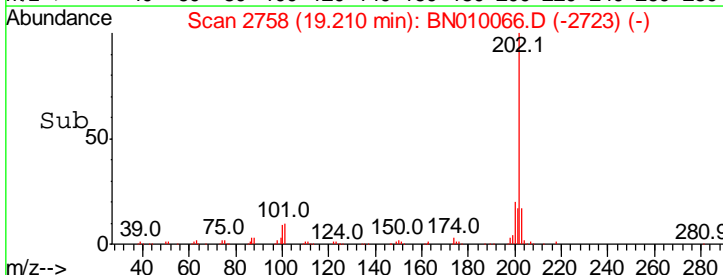
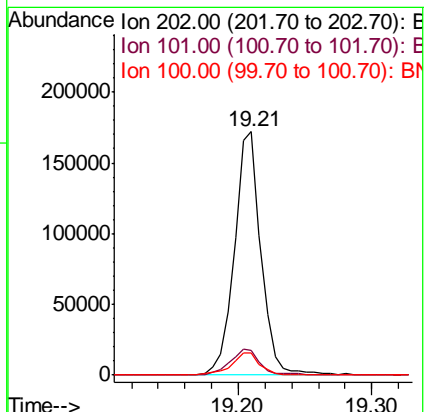
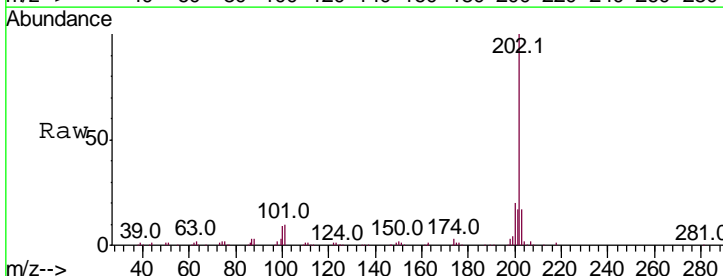
Manual Integrations
APPROVED
 mohammad
 3/4/2020 7:51:51 AM

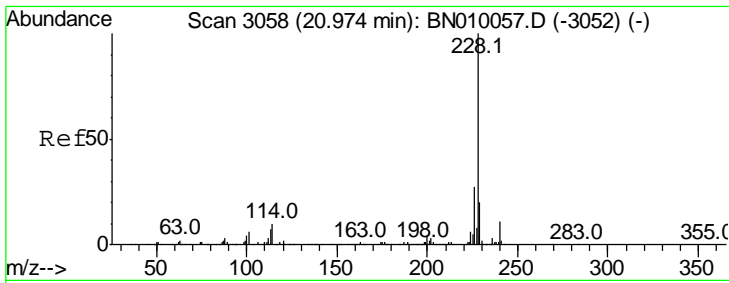


#80
 Pyrene
 Concen: 7.470 ng/ul
 RT: 19.21 min Scan# 2758
 Delta R.T. 0.01 min
 Lab File: BN010066.D
 Acq: 03 Mar 2020 17:40

Tgt Ion: 202 Resp: 237873

Ion	Ratio	Lower	Upper
202	100		
101	10.4	11.3	16.9#
100	9.0	9.0	13.6#





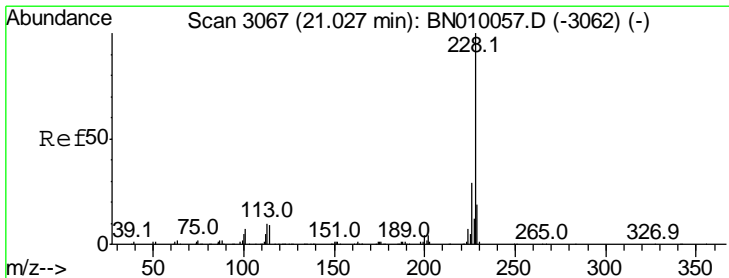
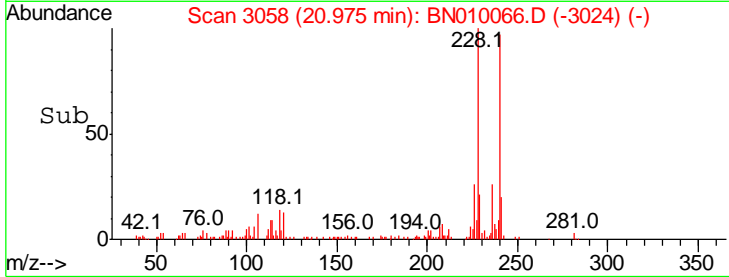
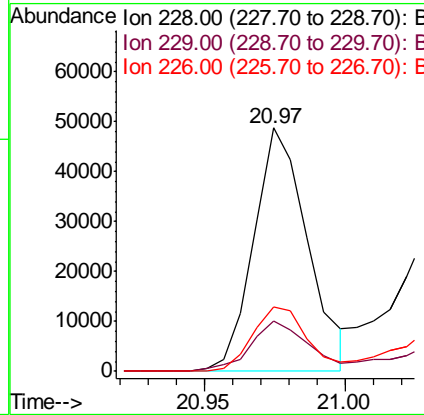
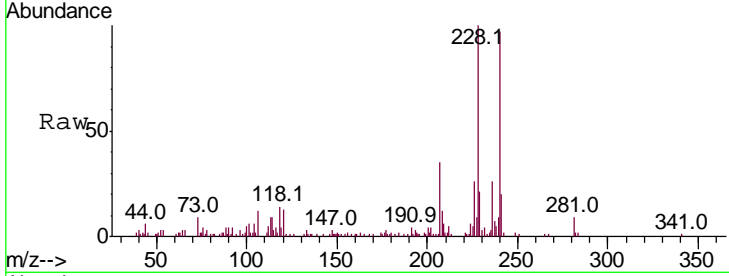
#83
 Benzo(a)anthracene
 Concen: 2.134 ng/ul
 RT: 20.97 min Scan# 3058
 Delta R.T. 0.00 min
 Lab File: BN010066.D
 Acq: 03 Mar 2020 17:40

Instrument :
 BNA_N
ClientSampled :
 DBD15MEDL

Tgt Ion	Resp	Lower	Upper
228	100		
229	20.7	15.0	22.4
226	26.4	21.4	32.2

Manual Integrations
APPROVED

mohammad
 3/4/2020 7:51:51 AM



#85
 Chrysene
 Concen: 1.438 ng/ul
 RT: 21.03 min Scan# 3067
 Delta R.T. 0.00 min
 Lab File: BN010066.D
 Acq: 03 Mar 2020 17:40

Tgt Ion	Resp	Lower	Upper
228	100		
226	29.2	23.4	35.2
229	18.3	15.0	22.4

