

Data Path : Z:\SVOASRV\HPCHEM1\BNA_N\DATA\BN030419\
 Data File : BN004590.D
 Acq On : 04 Mar 2019 13:54
 Operator : JU/SJ
 Sample : K1622-05
 Misc :
 ALS Vial : 9 Sample Multiplier: 1

Instrument :
 BNA_N
 ClientSampleId :
 BF5H8

Integration Parameters: LSCINT.P

Integrator: RTE
 Smoothing : OFF Filtering: 5
 Sampling : 1 Min Area: 0.1 % of largest Peak
 Start Thrs: 0.2 Max Peaks: 100
 Stop Thrs : 0 Peak Location: TOP

If leading or trailing edge < 100 prefer < Baseline drop else tangent >
 Peak separation: 5

Method : Z:\SVOASRV\HPCHEM1\BNA_N\METHODS\SOM-EPA-BN020719MA.M
 Title : SVOA CALIBRATION

Signal : TIC

peak #	R.T. min	first scan	max scan	last scan	PK TY	peak height	corr. area	corr. % max.	% of total
1	3.234	39	42	50	rVB	5392	7943	0.88%	0.107%
2	3.958	161	165	167	rBV2	1095	1554	0.17%	0.021%
3	4.852	313	317	320	rBV2	745	1114	0.12%	0.015%
4	6.893	658	664	672	rBB	53096	83356	9.26%	1.119%
5	7.069	687	694	704	rBB	42532	67897	7.54%	0.911%
6	7.257	721	726	734	rBB	59062	90134	10.01%	1.210%
7	7.728	801	806	813	rBB	106404	166894	18.53%	2.240%
8	8.422	919	924	931	rBB	75831	115949	12.87%	1.556%
9	8.893	998	1004	1011	rBB	56591	89794	9.97%	1.205%
10	9.604	1119	1125	1131	rBB	45567	68951	7.66%	0.925%
11	10.134	1209	1215	1221	rBB	82861	128524	14.27%	1.725%
12	10.516	1273	1280	1287	rBB	185664	294142	32.66%	3.948%
13	10.657	1298	1304	1311	rBB	86292	137536	15.27%	1.846%
14	12.104	1548	1550	1553	rBB	1245	1248	0.14%	0.017%
15	13.781	1829	1835	1839	rBV	175755	232936	25.86%	3.126%
16	13.828	1839	1843	1847	rVB	29588	37724	4.19%	0.506%
17	14.063	1877	1883	1891	rBB	206547	286352	31.80%	3.843%
18	14.369	1929	1935	1942	rBB2	309276	456665	50.71%	6.129%
19	14.563	1964	1968	1974	rBB	34999	48094	5.34%	0.645%
20	15.363	2098	2104	2110	rBB	282211	379112	42.10%	5.088%
21	15.480	2120	2124	2129	rBV	39081	46677	5.18%	0.626%
22	15.604	2140	2145	2147	rBB	1218	1556	0.17%	0.021%
23	16.904	2363	2366	2369	rBB	919	1069	0.12%	0.014%
24	17.122	2396	2403	2409	rVB	422792	587081	65.19%	7.879%
25	17.216	2413	2419	2425	rBV2	318640	422042	46.86%	5.664%
26	17.398	2447	2450	2452	rBB	1081	1075	0.12%	0.014%
27	17.886	2529	2533	2535	rBB	1768	2039	0.23%	0.027%
28	17.998	2548	2552	2556	rVB	9943	11745	1.30%	0.158%
29	18.080	2563	2566	2569	rVB	1785	1964	0.22%	0.026%
30	18.492	2632	2636	2637	rBV	1319	1456	0.16%	0.020%
31	18.510	2637	2639	2644	rVB2	1289	1465	0.16%	0.020%
32	18.763	2679	2682	2688	rVB2	833	1104	0.12%	0.015%
33	18.851	2693	2697	2703	rVV	4032	5017	0.56%	0.067%
34	18.921	2706	2709	2715	rVB2	1279	2252	0.25%	0.030%

Data Path : Z:\SVOASRV\HPCHEM1\BNA_N\DATA\BN030419\
 Data File : BN004590.D
 Acq On : 04 Mar 2019 13:54
 Operator : JU/SJ
 Sample : K1622-05
 Misc :
 ALS Vial : 9 Sample Multiplier: 1

Instrument :
 BNA_N
 ClientSampleId :
 BF5H8

Integration Parameters: LSCINT.P

Integrator: RTE
 Smoothing : OFF Filtering: 5
 Sampling : 1 Min Area: 0.1 % of largest Peak
 Start Thrs: 0.2 Max Peaks: 100
 Stop Thrs : 0 Peak Location: TOP

If leading or trailing edge < 100 prefer < Baseline drop else tangent >
 Peak separation: 5

Method : Z:\SVOASRV\HPCHEM1\BNA_N\METHODS\SOM-EPA-BN020719MA.M
 Title : SVOA CALIBRATION

35	19.151	2745	2748	2751	rBV	2320	2537	0.28%	0.034%
36	19.286	2768	2771	2774	rVB	3786	3348	0.37%	0.045%
37	19.404	2786	2791	2795	rBV2	2770	3590	0.40%	0.048%
38	19.521	2805	2811	2819	rVB	417573	543554	60.35%	7.295%
39	20.051	2899	2901	2903	rBV	921	931	0.10%	0.012%
40	20.498	2974	2977	2979	rBV3	770	904	0.10%	0.012%
41	20.551	2984	2986	2989	rBV3	3413	3717	0.41%	0.050%
42	20.621	2995	2998	3001	rBV3	730	1120	0.12%	0.015%
43	21.015	3062	3065	3072	rVB2	29213	35989	4.00%	0.483%
44	21.098	3076	3079	3082	rBV	2274	2463	0.27%	0.033%
45	21.227	3098	3101	3105	rVB2	2185	2643	0.29%	0.035%
46	21.321	3111	3117	3123	rBV	682139	849633	94.34%	11.403%
47	21.457	3136	3140	3144	rBV	24599	26792	2.97%	0.360%
48	21.892	3210	3214	3220	rVB	41770	50450	5.60%	0.677%
49	22.362	3289	3294	3298	rVB	60911	77752	8.63%	1.044%
50	22.868	3375	3380	3386	rVB	71900	100862	11.20%	1.354%
51	23.439	3470	3477	3487	rVB2	413103	746629	82.90%	10.021%
52	23.586	3494	3502	3512	rVB	480785	900606	100.00%	12.087%
53	24.092	3581	3588	3597	rVB	59492	114804	12.75%	1.541%
54	24.839	3708	3715	3723	rBV	46007	101445	11.26%	1.362%
55	25.721	3858	3865	3873	rVB	23636	56816	6.31%	0.763%
56	26.750	4034	4040	4049	rVB3	15661	41753	4.64%	0.560%

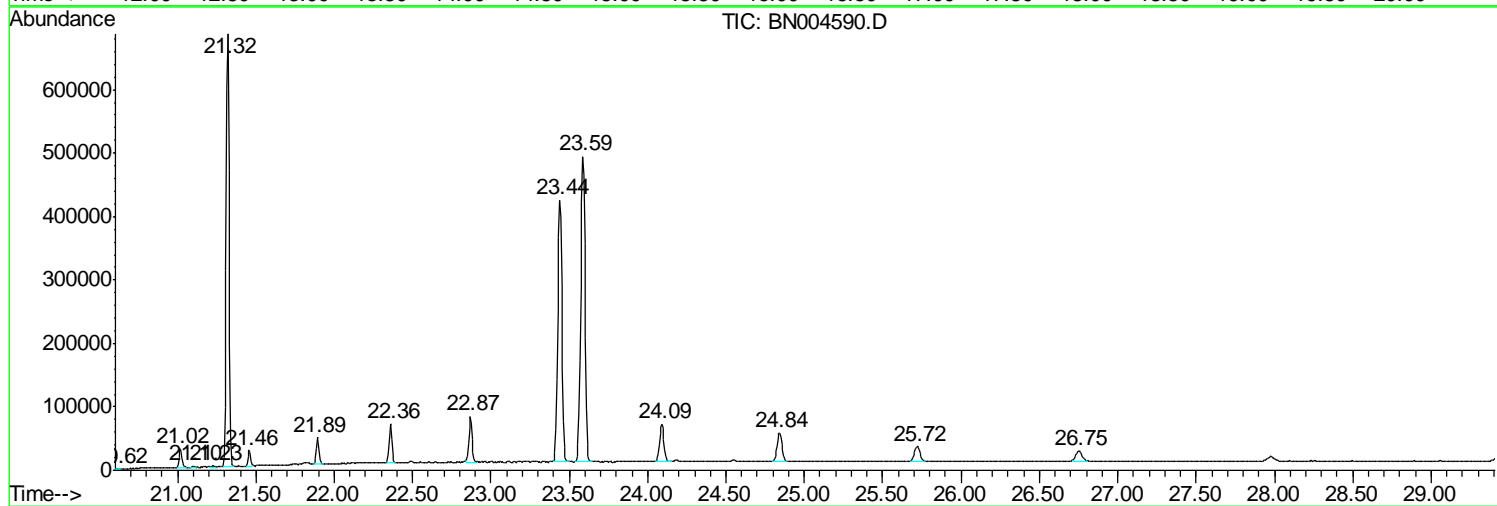
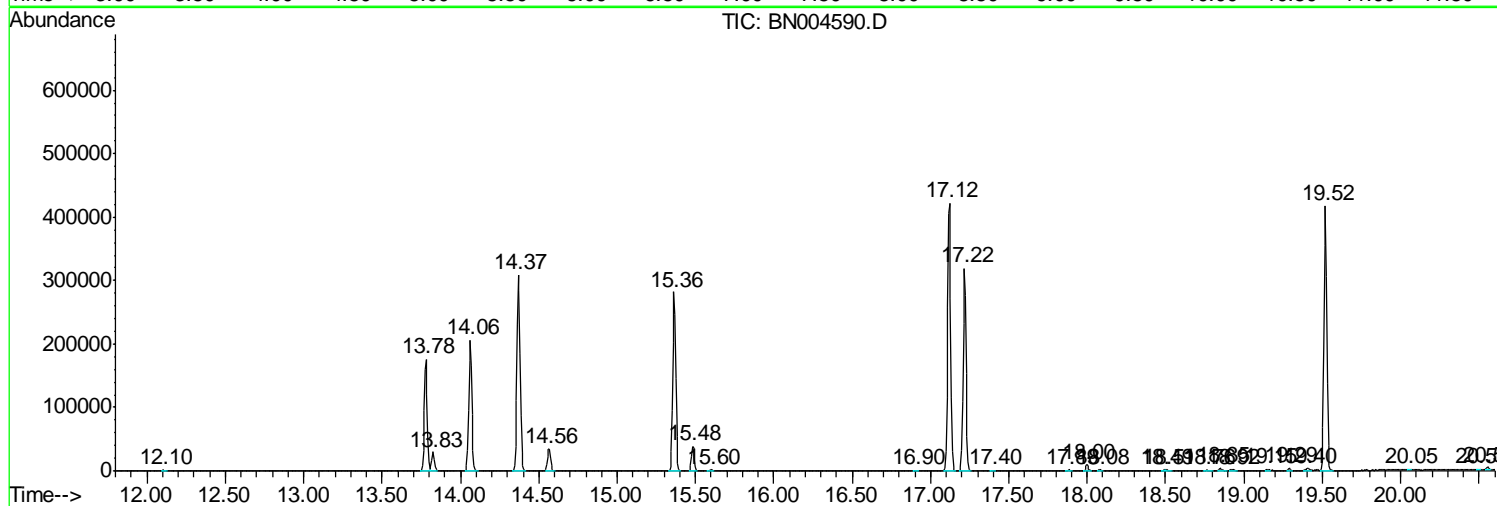
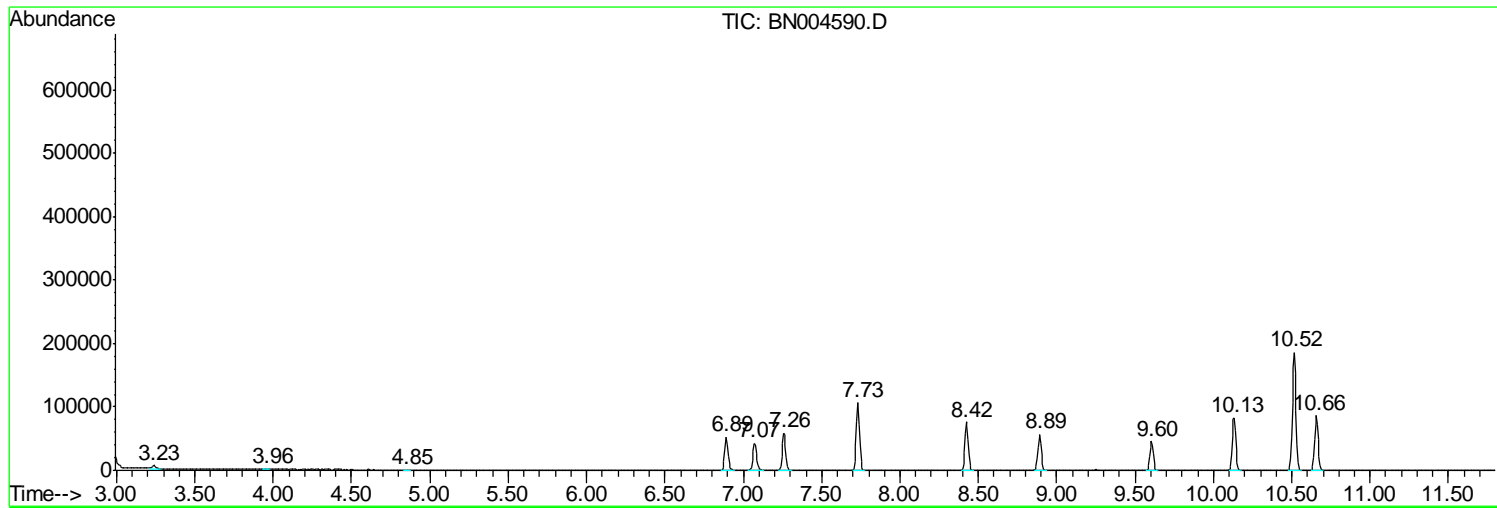
Sum of corrected areas: 7450799

Data Path : Z:\SVOASRV\HPCHEM1\BNA N\DATA\BN030419\
 Data File : BN004590.D
 Acq On : 04 Mar 2019 13:54
 Operator : JU/SJ
 Sample : K1622-05
 Misc :
 ALS Vial : 9 Sample Multiplier: 1

Instrument :
 BNA_N
ClientSampled :
 BF5H8

Quant Method : Z:\SVOASRV\HPCHEM1\BNA_N\METHODS\SOM-EPA-BN020719MA.M
 Quant Title : SVOA CALIBRATION

TIC Library : C:\DATABASE\NIST02.L
 TIC Integration Parameters: LSCINT.P



Data Path : Z:\SVOASRV\HPCHEM1\BNA N\DATA\BN030419\
 Data File : BN004590.D
 Acq On : 04 Mar 2019 13:54
 Operator : JU/SJ
 Sample : K1622-05
 Misc :
 ALS Vial : 9 Sample Multiplier: 1

Instrument :
 BNA_N
 ClientSampleID :
 BF5H8

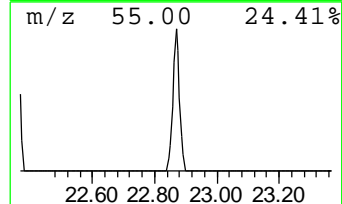
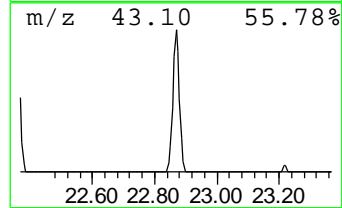
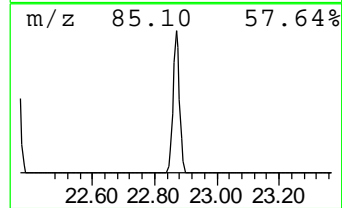
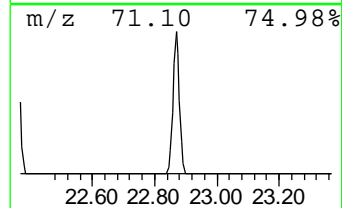
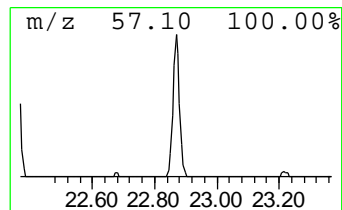
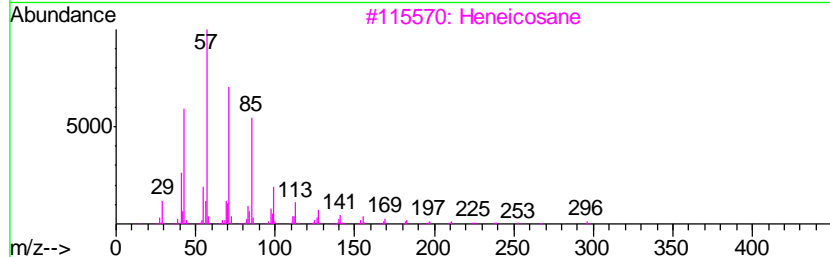
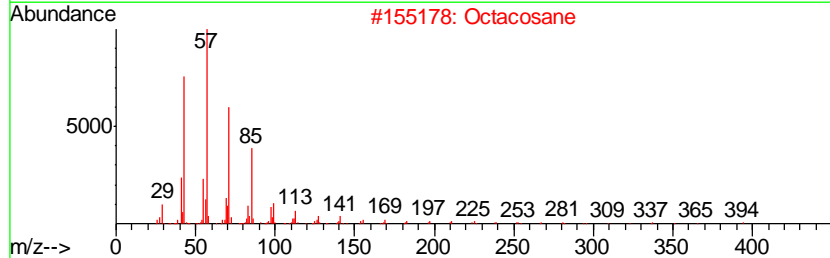
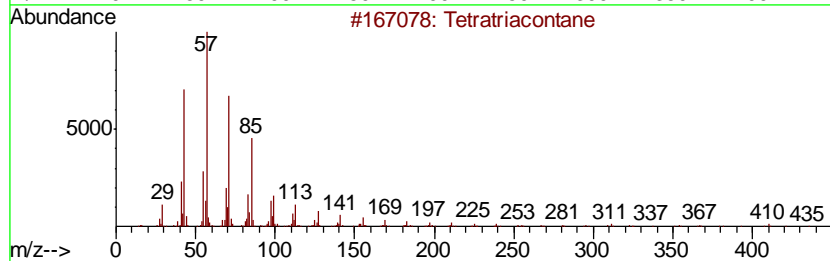
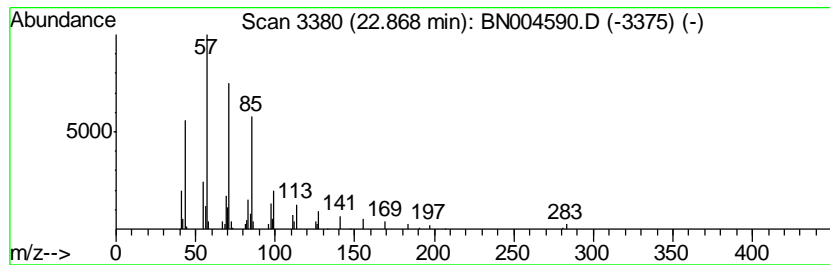
Quant Method : Z:\SVOASRV\HPCHEM1\BNA_N\METHODS\SOM-EPA-BN020719MA.M
 Quant Title : SVOA CALIBRATION

TIC Library : C:\DATABASE\NIST02.L
 TIC Integration Parameters: LSCINT.P

 Peak Number 1 (DEL) Alkane: Straight-Chai... Concentration Rank 3

R.T.	EstConc	Area	Relative to ISTD	R.T.
22.87	2.24 ng/ul	100862	Perylene-d12	23.59

Hit#	of	Tentative ID	MW	MolForm	CAS#	Qual
1	5	Tetratriacontane	479	C34H70	014167-59-0	91
2		Octacosane	394	C28H58	000630-02-4	91
3		Heneicosane	296	C21H44	000629-94-7	91
4		Tetratetracontane	619	C44H90	007098-22-8	91
5		Heptadecane, 9-octyl-	352	C25H52	007225-64-1	91



Data Path : Z:\SVOASRV\HPCHEM1\BNA N\DATA\BN030419\
 Data File : BN004590.D
 Acq On : 04 Mar 2019 13:54
 Operator : JU/SJ
 Sample : K1622-05
 Misc :
 ALS Vial : 9 Sample Multiplier: 1

Instrument :
 BNA_N
 ClientSampleID :
 BF5H8

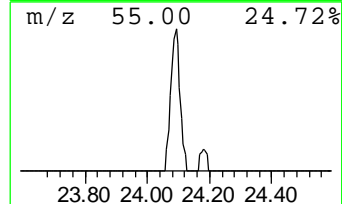
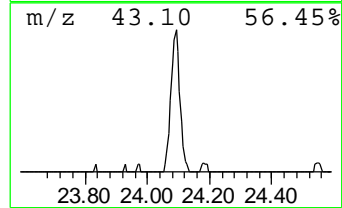
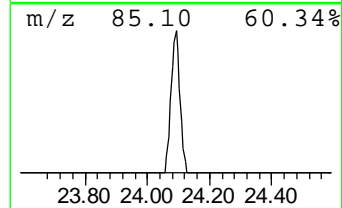
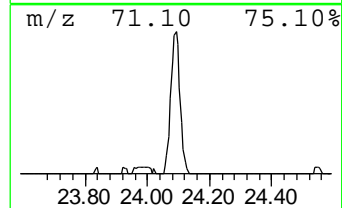
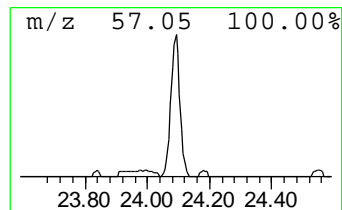
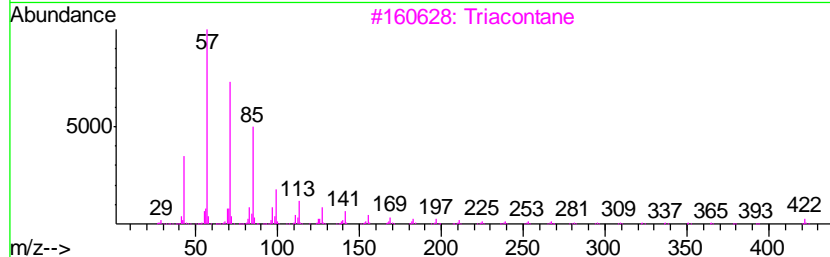
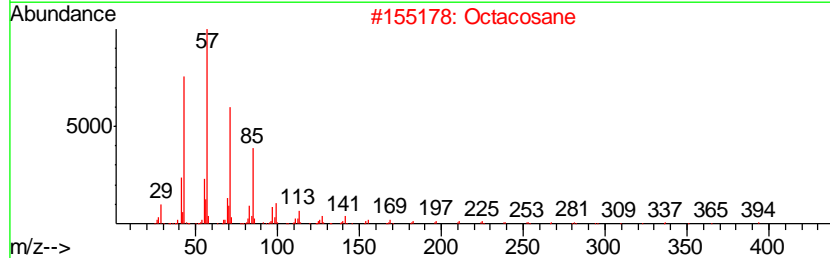
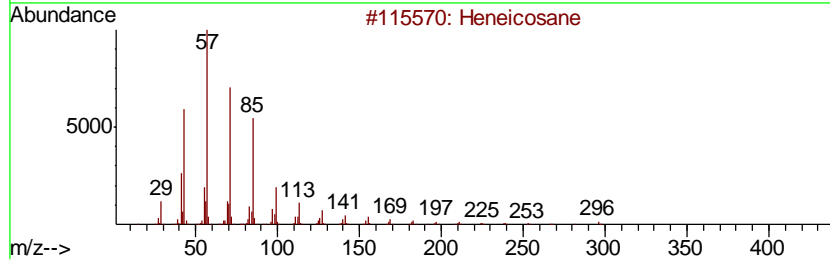
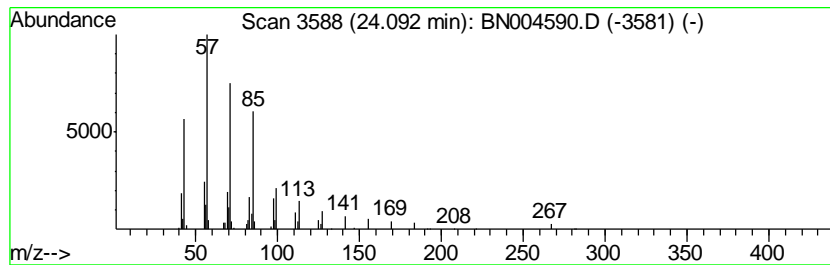
Quant Method : Z:\SVOASRV\HPCHEM1\BNA_N\METHODS\SOM-EPA-BN020719MA.M
 Quant Title : SVOA CALIBRATION

TIC Library : C:\DATABASE\NIST02.L
 TIC Integration Parameters: LSCINT.P

 Peak Number 2 (DEL) Alkane: Straight-Chai... Concentration Rank 1

R.T.	EstConc	Area	Relative to ISTD	R.T.
24.09	2.55 ng/ul	114804	Perylene-d12	23.59

Hit#	of	Tentative ID	MW	MolForm	CAS#	Qual
1	5	Heneicosane	296	C21H44	000629-94-7	91
2		Octacosane	394	C28H58	000630-02-4	91
3		triacontane	422	C30H62	000638-68-6	91
4		Octacosane	394	C28H58	000630-02-4	91
5		Tetratetracontane	619	C44H90	007098-22-8	91



Data Path : Z:\SVOASRV\HPCHEM1\BNA N\DATA\BN030419\
 Data File : BN004590.D
 Acq On : 04 Mar 2019 13:54
 Operator : JU/SJ
 Sample : K1622-05
 Misc :
 ALS Vial : 9 Sample Multiplier: 1

Instrument :
 BNA_N
 ClientSampled :
 BF5H8

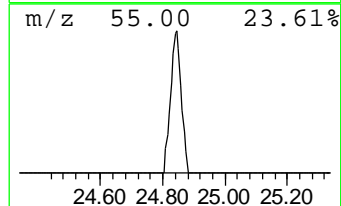
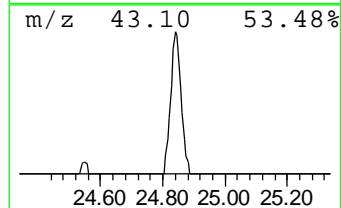
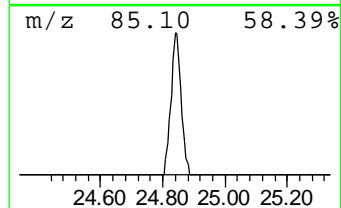
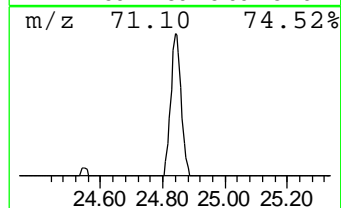
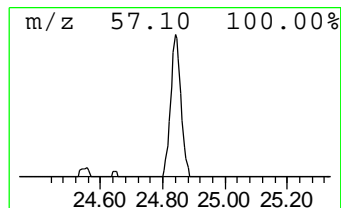
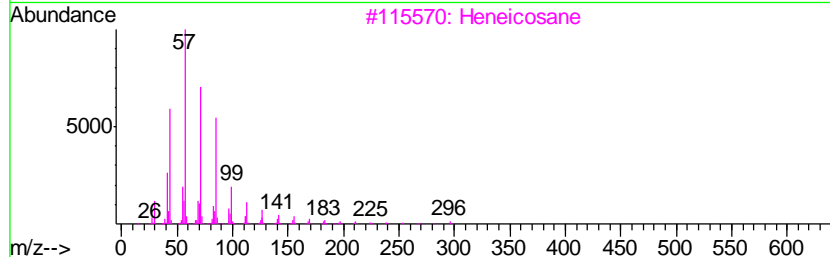
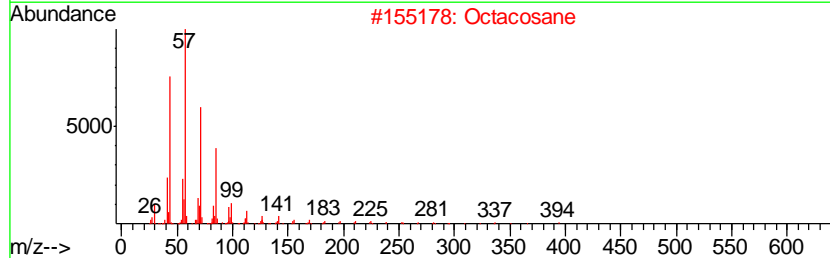
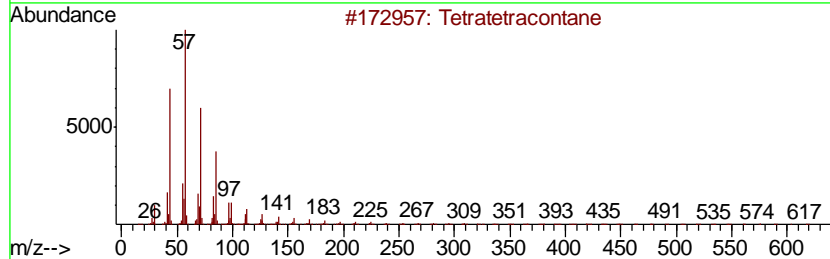
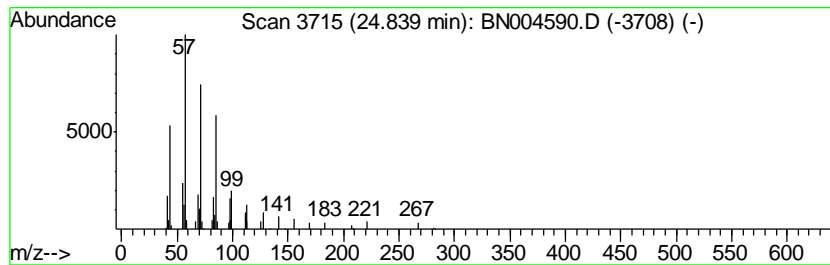
Quant Method : Z:\SVOASRV\HPCHEM1\BNA_N\METHODS\SOM-EPA-BN020719MA.M
 Quant Title : SVOA CALIBRATION

TIC Library : C:\DATABASE\NIST02.L
 TIC Integration Parameters: LSCINT.P

 Peak Number 3 (DEL) Alkane: Straight-Chai... Concentration Rank 2

R.T.	EstConc	Area	Relative to ISTD	R.T.
24.84	2.25 ng/ul	101445	Perylene-d12	23.59

Hit#	of	Tentative ID	MW	MolForm	CAS#	Qual
1	5	Tetratetracontane	619	C44H90	007098-22-8	91
2		Octacosane	394	C28H58	000630-02-4	91
3		Heneicosane	296	C21H44	000629-94-7	90
4		Heptadecane, 9-octyl-	352	C25H52	007225-64-1	90
5		Hexacosane	366	C26H54	000630-01-3	90



Data Path : Z:\SVOASRV\HPCHEM1\BNA_N\DATA\BN030419\
Data File : BN004590.D
Acq On : 04 Mar 2019 13:54
Operator : JU/SJ
Sample : K1622-05
Misc :
ALS Vial : 9 Sample Multiplier: 1

Instrument :
BNA_N
ClientSampleId :
BF5H8

Quant Method : Z:\SVOASRV\HPCHEM1\BNA_N\METHODS\SOM-EPA-BN020719MA.M
Quant Title : SVOA CALIBRATION

TIC Library : C:\DATABASE\NIST02.L
TIC Integration Parameters: LSCINT.P

TIC Top Hit name	RT	EstConc	Units	Response	--Internal Standard--			
					#	RT	Resp	Conc
(DEL) Alkane: Str...	22.87	2.2	ng/ul	100862	6	23.59	900606	20.0
(DEL) Alkane: Str...	24.09	2.5	ng/ul	114804	6	23.59	900606	20.0
(DEL) Alkane: Str...	24.84	2.3	ng/ul	101445	6	23.59	900606	20.0