

Data Path : Z:\svoasrv\HPCHEM1\BNA_N\Data\BNO30821\
 Data File : BNO13870.D
 Acq On : 08 Mar 2021 15:24
 Operator : CG/JU
 Sample : PB135037BS
 Misc :
 ALS Vial : 4 Sample Multiplier: 1

Instrument :
 BNA_N
 Client Sample ID :
 PB135037BS

Quant Time: Mar 08 15:58:11 2021
 Quant Method : Z:\SVOASRV\HPCHEM1\BNA_N\METHODS\8270-SIM-BNO22421.M
 Quant Title : ASP BNA STANDARDS FOR 5 POINT CALIBRATION
 QLast Update : Mon Mar 08 10:32:09 2021
 Response via : Initial Calibration

Compound	R.T.	QI on	Response	Conc	Units	Dev(Min)

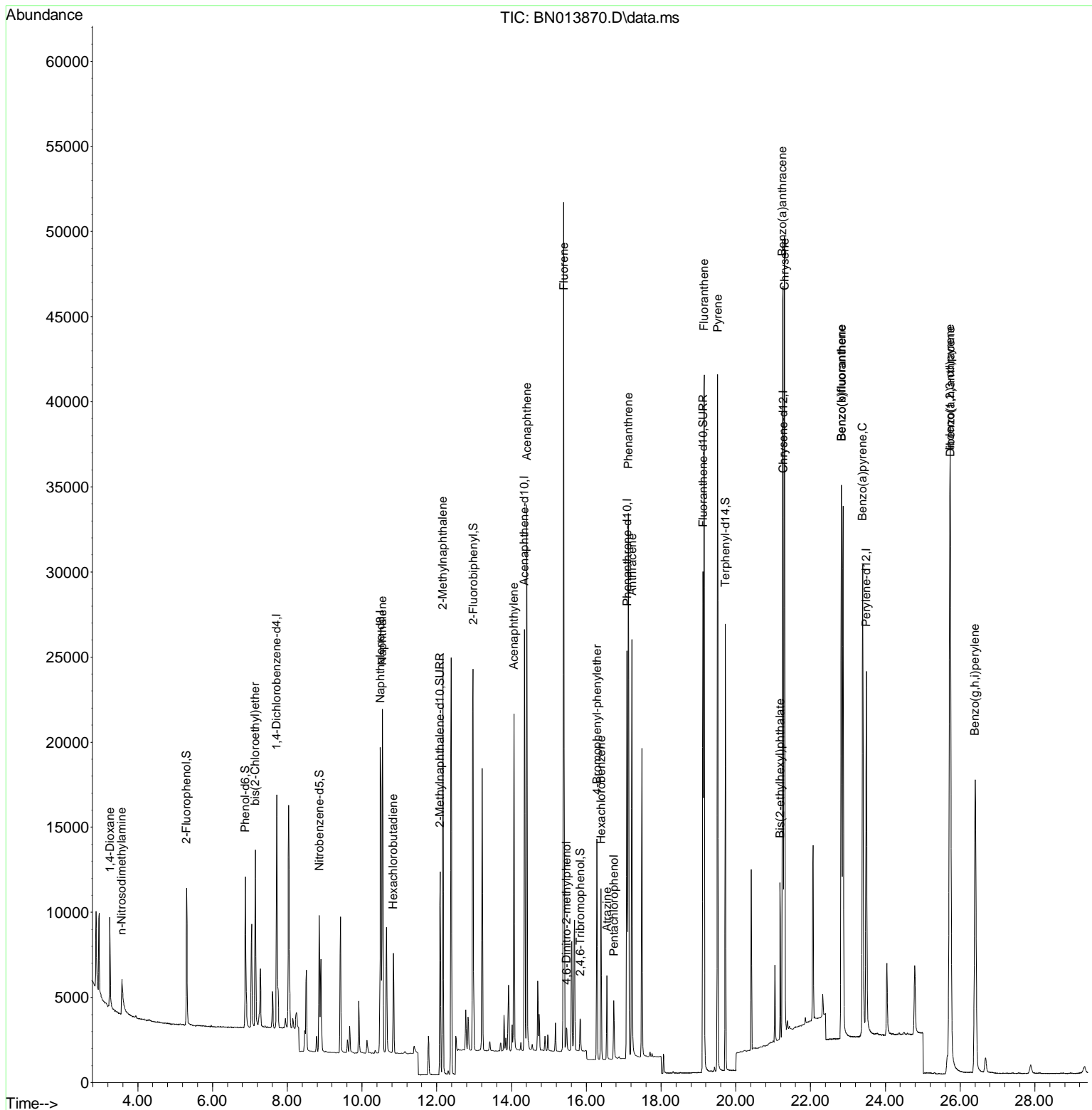
Internal Standards						
1) 1,4-Dichlorobenzene-d4	7.716	152	6591	0.40	ng	0.00
7) Naphthalene-d8	10.492	136	24888	0.40	ng	#-0.01
13) Acenaphthene-d10	14.346	164	13804	0.40	ng	0.00
19) Phenanthrene-d10	17.092	188	29989	0.40	ng	# 0.00
29) Chrysene-d12	21.271	240	29148	0.40	ng	# 0.00
36) Perylene-d12	23.493	264	28336	0.40	ng	# 0.00
System Monitoring Compounds						
4) 2-Fluorophenol	5.308	112	6077	0.34	ng	0.00
5) Phenol-d6	6.879	99	7981	0.34	ng	0.00
8) Nitrobenzene-d5	8.857	82	6419	0.40	ng	0.00
11) 2-Methylnaphthalene-d10	12.089	152	15979	0.40	ng	0.00
14) 2,4,6-Tribromophenol	15.843	330	1642	0.29	ng	0.00
15) 2-Fluorobiphenyl	12.976	172	21573	0.44	ng	0.00
27) Fluoranthene-d10	19.124	212	32755	0.37	ng	0.00
31) Terphenyl-d14	19.724	244	25926	0.40	ng	0.00
Target Compounds						
2) 1,4-Dioxane	3.255	88	3466	0.43	ng	Qvalue 97
3) n-Nitrosodimethylamine	3.577	42	2423	0.39	ng	# 93
6) bis(2-Chloroethyl)ether	7.145	93	7427	0.45	ng	95
9) Naphthalene	10.543	128	25623	0.42	ng	99
10) Hexachlorobutadiene	10.834	225	4787	0.41	ng	# 100
12) 2-Methylnaphthalene	12.164	142	17241	0.40	ng	99
16) Acenaphthylene	14.067	152	21096	0.34	ng	100
17) Acenaphthene	14.410	154	15490	0.40	ng	98
18) Fluorene	15.399	166	19284	0.39	ng	99
20) 4,6-Dinitro-2-methylph...	15.475	198	1162	0.56	ng	89
21) 4-Bromophenyl-phenyl ether	16.289	248	6271	0.38	ng	99
22) Hexachlorobenzene	16.398	284	7472	0.44	ng	99
23) Atrazine	16.556	200	3690	0.24	ng	93
24) Pentachlorophenol	16.739	266	1758	0.32	ng	100
25) Phenanthrene	17.128	178	33113	0.42	ng	100
26) Anthracene	17.226	178	26387	0.35	ng	99
28) Fluoranthene	19.154	202	36329	0.39	ng	99
30) Pyrene	19.516	202	36758	0.41	ng	100
32) Benzo(a)anthracene	21.250	228	31978	0.36	ng	98
33) Chrysene	21.303	228	36426	0.42	ng	98
34) Bis(2-ethylhexyl)phtha...	21.186	149	8986	0.21	ng	98
35) Indeno(1,2,3-cd)pyrene	25.724	276	44547	0.42	ng	98
37) Benzo(b)fluoranthene	22.825	252	39263	0.43	ng	97
38) Benzo(k)fluoranthene	22.825	252	39263	0.45	ng	98
39) Benzo(a)pyrene	23.393	252	35318	0.43	ng	# 89
40) Di benzo(a,h)anthracene	25.741	278	36627	0.42	ng	97
41) Benzo(g,h,i)perylene	26.406	276	37243	0.43	ng	98

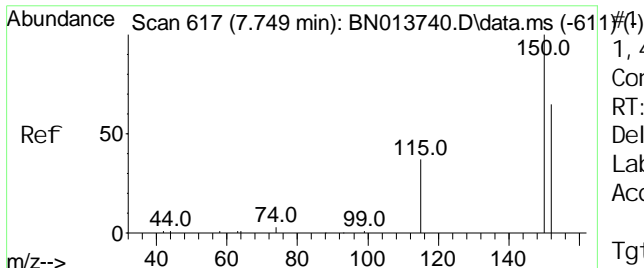
(#) = qualifier out of range (m) = manual integration (+) = signals summed

Data Path : Z:\svoasrv\HPCHEM1\BNA_N\Data\BN030821\
 Data File : BN013870.D
 Acq On : 08 Mar 2021 15:24
 Operator : CG/JU
 Sample : PB135037BS
 Misc :
 ALS Vial : 4 Sample Multiplier: 1

Instrument :
 BNA_N
 Client Sampled :
 PB135037BS

Quant Time: Mar 08 15:58:11 2021
 Quant Method : Z:\SVOASRV\HPCHEM1\BNA_N\METHODS\8270-SIM-BN022421.M
 Quant Title : ASP BNA STANDARDS FOR 5 POINT CALIBRATION
 QLast Update : Mon Mar 08 10:32:09 2021
 Response via : Initial Calibration

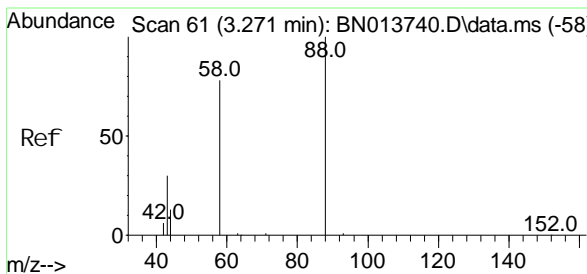
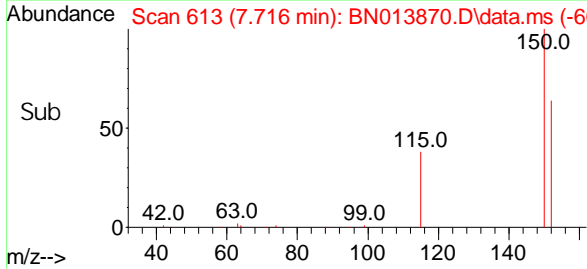
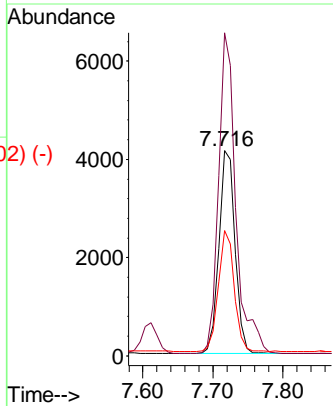
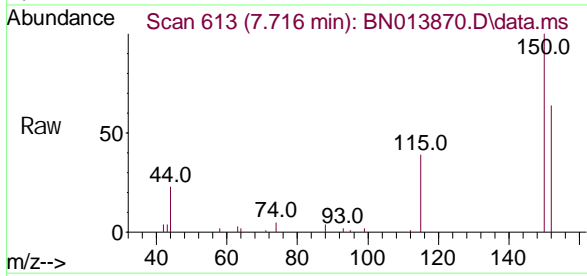




1, 4-Di chl orobenzene-d4
 Concen: 0.40 ng
 RT: 7.716 min Scan# 613
 Del ta R. T. -0.008 min
 Lab Fi le: BNO13870. D
 Acq: 08 Mar 2021 15: 24

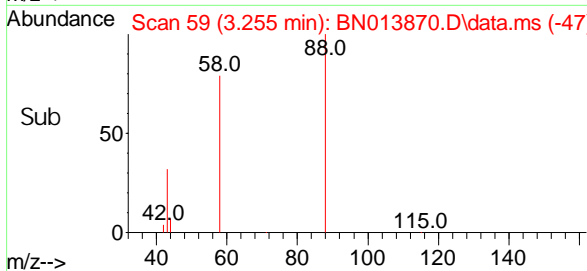
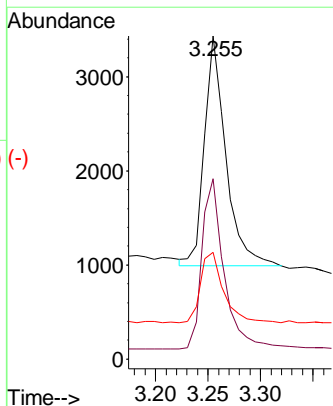
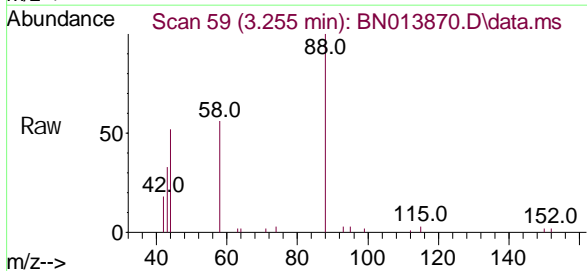
Instrument :
 BNA_N
ClientSampled :
 PB135037BS

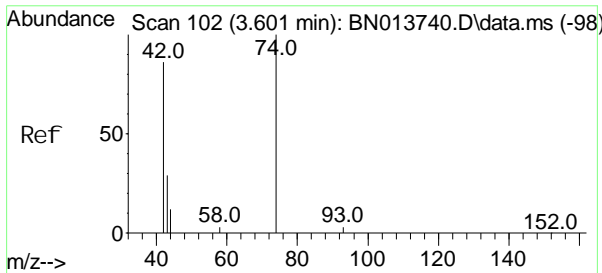
Tgt Ion	Resp	Lower	Upper
152	100		
150	157.4	121.8	182.8
115	61.2	46.6	69.8



1, 4-Di oxane
 Concen: 0.43 ng
 RT: 3.255 min Scan# 59
 Del ta R. T. 0.000 min
 Lab Fi le: BNO13870. D
 Acq: 08 Mar 2021 15: 24

Tgt Ion	Resp	Lower	Upper
88	100		
58	77.3	64.6	96.8
43	33.2	26.6	40.0



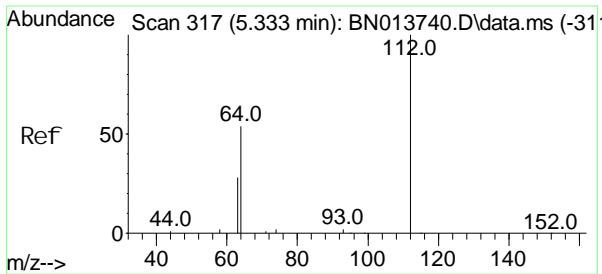
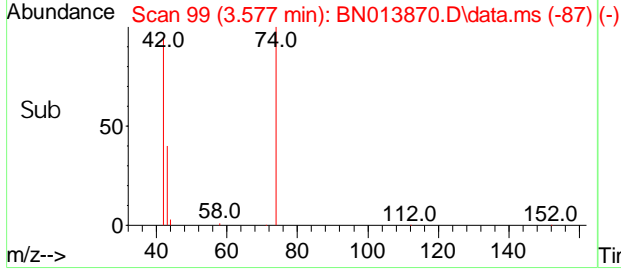
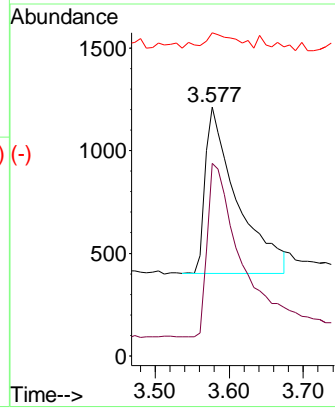
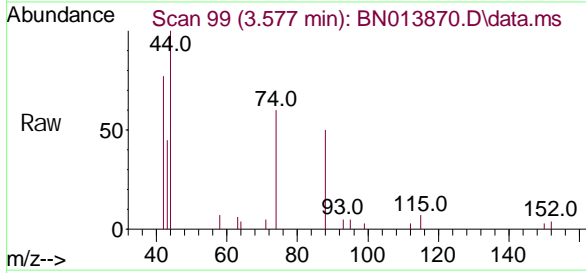


n-Ni trosodi methyl ami ne
 Concen: 0.39 ng
 RT: 3.577 mi n Scan# 99
 Del ta R. T. 0.000 mi n
 Lab Fi le: BN013870. D
 Acq: 08 Mar 2021 15:24

Instrument :
 BNA_N
ClientSampled :
 PB135037BS

Tgt Ion: 42 Resp: 2423

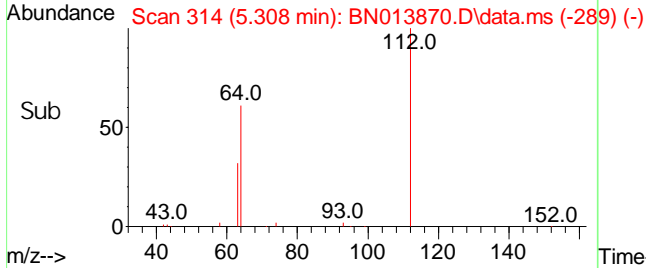
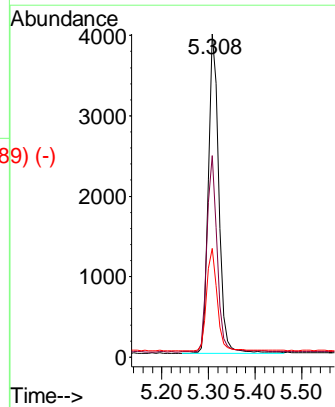
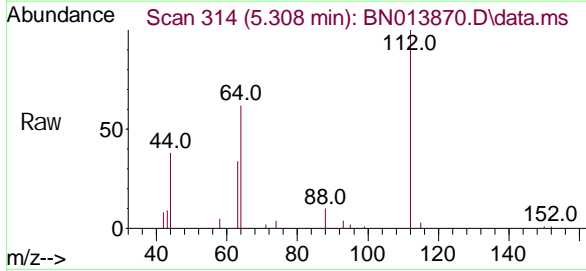
Ion	Ratio	Lower	Upper
42	100		
74	110.9	95.0	142.6
44	9.1	5.8	8.8#



2-Fl uorophenol
 Concen: 0.34 ng
 RT: 5.308 mi n Scan# 314
 Del ta R. T. 0.000 mi n
 Lab Fi le: BN013870. D
 Acq: 08 Mar 2021 15:24

Tgt Ion: 112 Resp: 6077

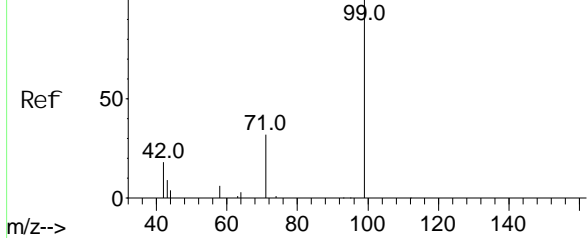
Ion	Ratio	Lower	Upper
112	100		
64	60.4	44.3	66.5
63	32.4	23.0	34.6



Abundance Scan 512 (6.903 min): BN013740.D\data.ms (-504)#5

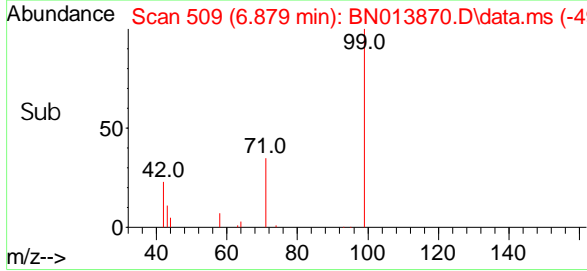
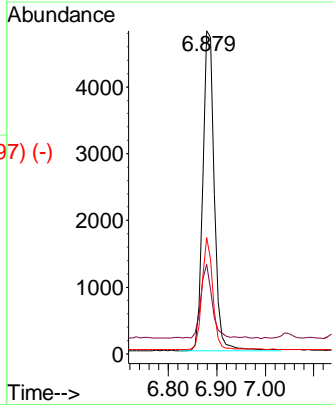
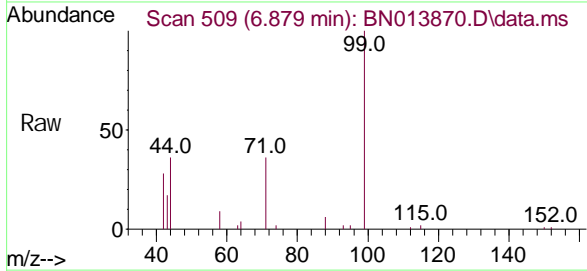
Phenol -d6
Concen: 0.34 ng
RT: 6.879 min Scan# 509
Delta R.T. 0.000 min
Lab File: BN013870.D
Acq: 08 Mar 2021 15:24

Instrument :
BNA_N
ClientSampled :
PB135037BS



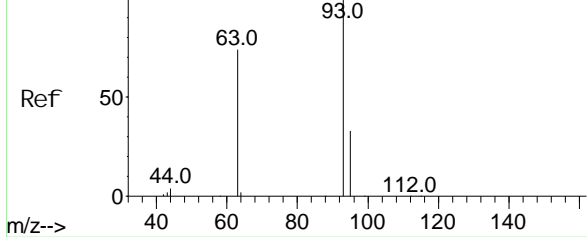
Tgt Ion: 99 Resp: 7981

Ion	Ratio	Lower	Upper
99	100		
42	22.8	15.2	22.8#
71	33.4	26.1	39.1



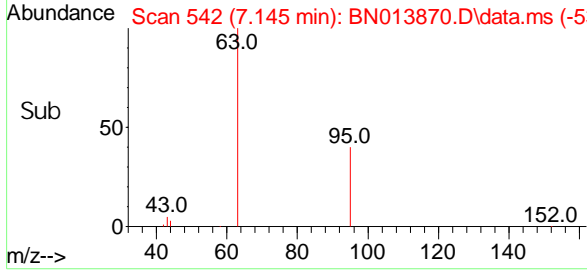
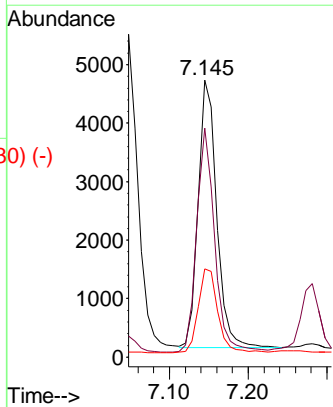
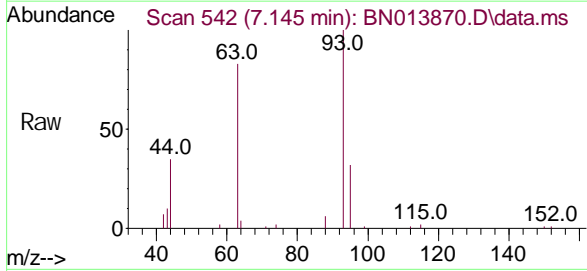
Abundance Scan 546 (7.177 min): BN013740.D\data.ms (-541)#6

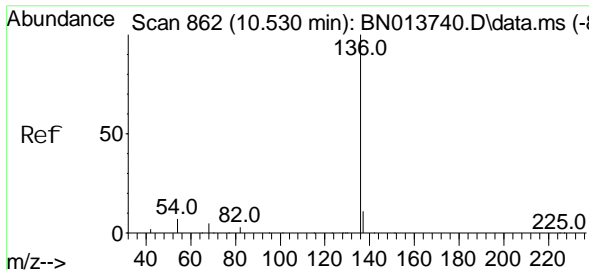
bis(2-Chloroethyl)ether
Concen: 0.45 ng
RT: 7.145 min Scan# 542
Delta R.T. 0.000 min
Lab File: BN013870.D
Acq: 08 Mar 2021 15:24



Tgt Ion: 93 Resp: 7427

Ion	Ratio	Lower	Upper
93	100		
63	81.4	60.8	91.2
95	32.9	26.0	39.0

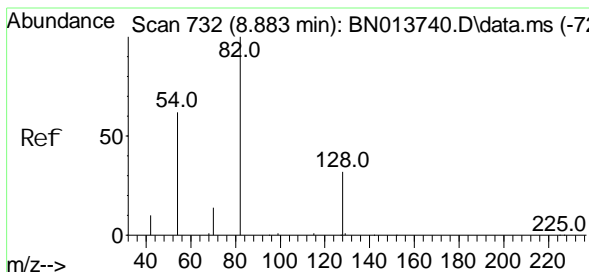
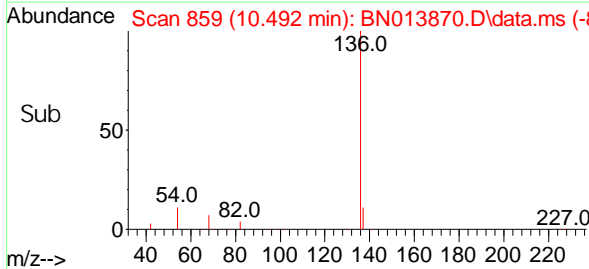
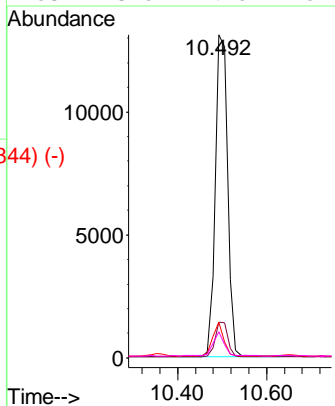
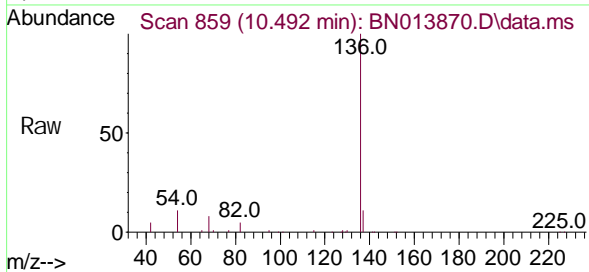




Naphthalene-d8
 Concen: 0.40 ng
 RT: 10.492 min Scan# 859
 Delta R.T. -0.013 min
 Lab File: BN013870.D
 Acq: 08 Mar 2021 15:24

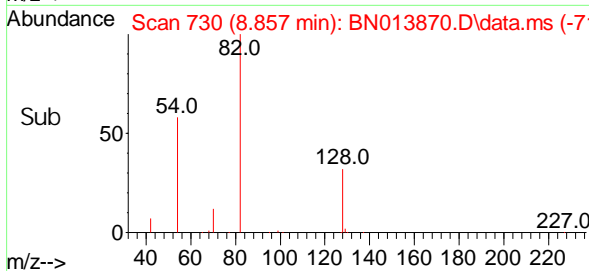
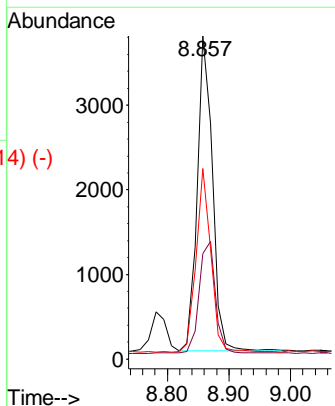
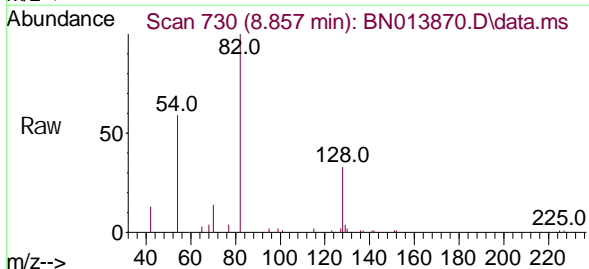
Instrument :
 BNA_N
 ClientSampled :
 PB135037BS

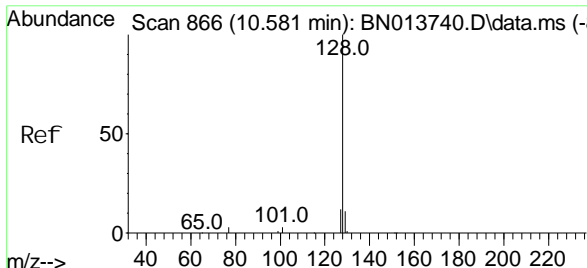
Tgt Ion	Resp	Lower	Upper
136	100		
137	11.1	9.0	13.6
54	11.1	6.4	9.6#
68	8.0	4.5	6.7#



Nitrobenzene-d5
 Concen: 0.40 ng
 RT: 8.857 min Scan# 730
 Delta R.T. 0.000 min
 Lab File: BN013870.D
 Acq: 08 Mar 2021 15:24

Tgt Ion	Resp	Lower	Upper
82	100		
128	32.6	39.2	58.8#
54	59.1	40.1	60.1

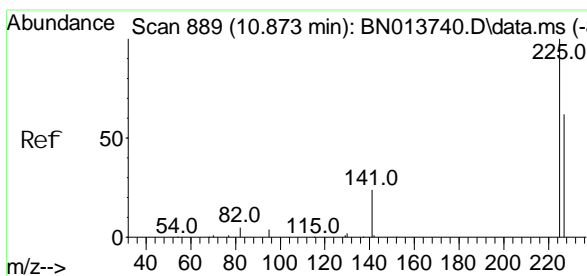
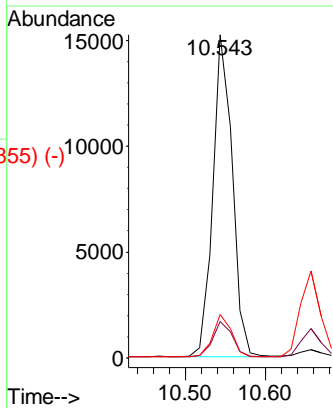
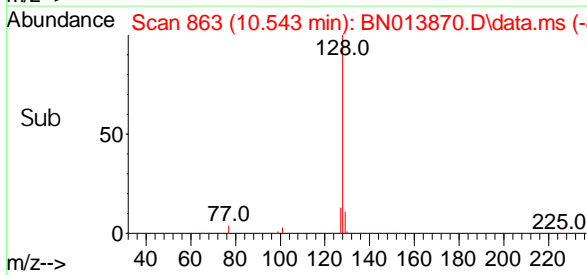
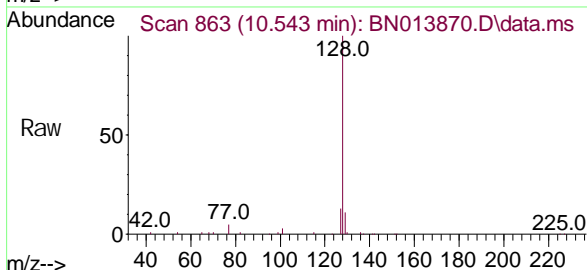




Scan 866 (10.581 min): BN013740.D\data.ms (-866) (-)
 Naphthalene
 Concen: 0.42 ng
 RT: 10.543 min Scan# 863
 Delta R.T. 0.000 min
 Lab File: BN013870.D
 Acq: 08 Mar 2021 15:24

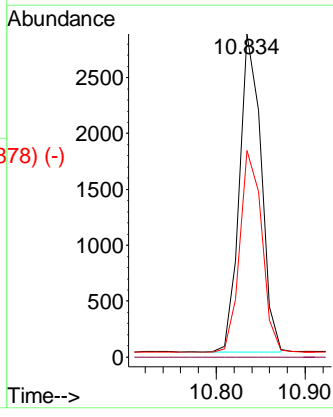
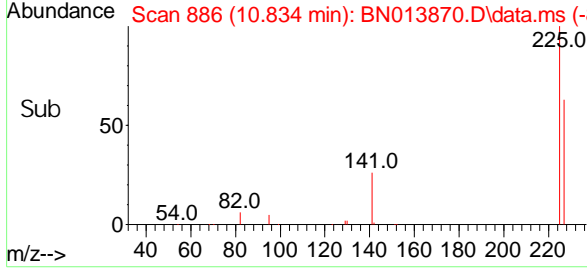
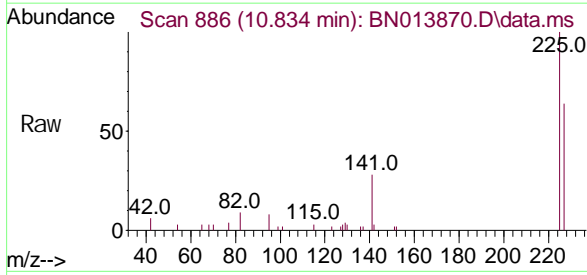
Instrument :
 BNA_N
ClientSampled :
 PB135037BS

Tgt Ion	Resp	Lower	Upper
128	100		
129	11.3	9.0	13.4
127	13.4	10.4	15.6

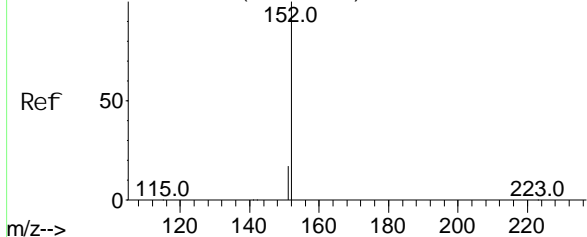


Scan 889 (10.873 min): BN013740.D\data.ms (-889) (-)
 Hexachlorobutadiene
 Concen: 0.41 ng
 RT: 10.834 min Scan# 886
 Delta R.T. 0.000 min
 Lab File: BN013870.D
 Acq: 08 Mar 2021 15:24

Tgt Ion	Resp	Lower	Upper
225	100		
223	0.0	0.0	0.0
227	64.2	51.2	76.8



Abundance Scan 1078 (12.124 min): BN013740.D\data.ms (-1067) (-)

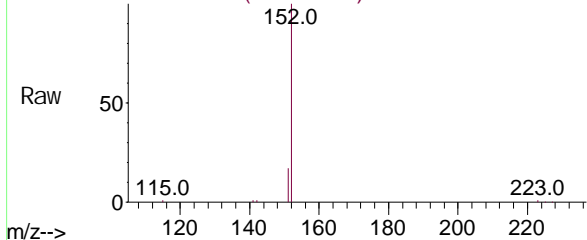


2-Methyl naphthal ene-d10
Concen: 0.40 ng
RT: 12.089 min Scan# 1070
Del ta R. T. -0.004 min
Lab Fi le: BN013870. D
Acq: 08 Mar 2021 15:24

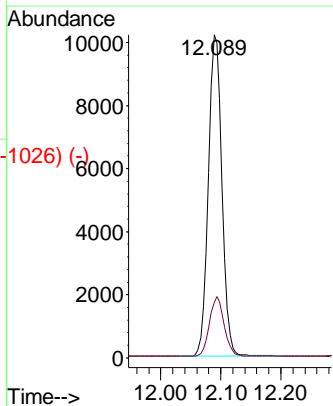
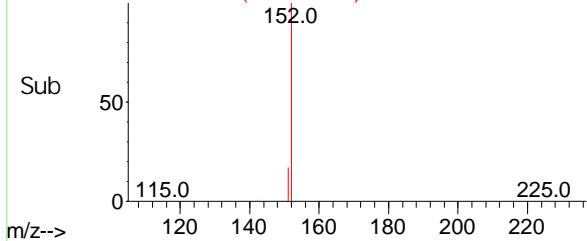
Tgt Ion: 152 Resp: 15979
Ion Ratio Lower Upper
152 100
151 20.2 16.2 24.2

Instrument :
BNA_N
ClientSampled :
PB135037BS

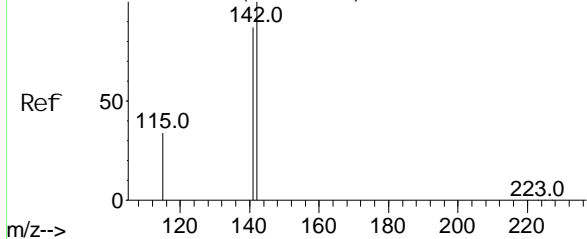
Abundance Scan 1070 (12.089 min): BN013870.D\data.ms



Abundance Scan 1070 (12.089 min): BN013870.D\data.ms (-1026) (-)



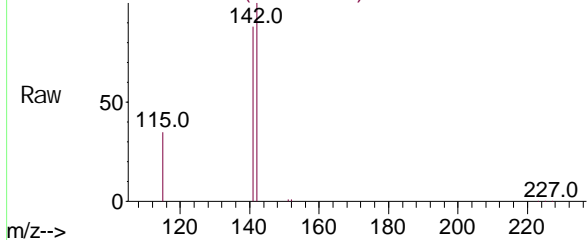
Abundance Scan 1095 (12.200 min): BN013740.D\data.ms (-1065) (-)



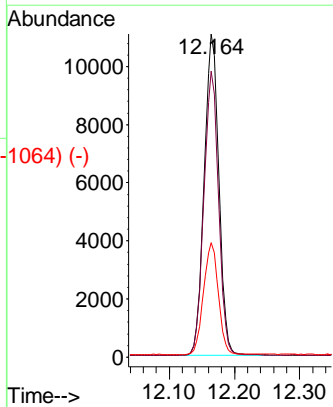
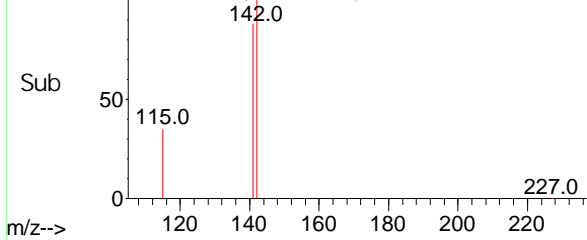
2-Methyl naphthal ene
Concen: 0.40 ng
RT: 12.164 min Scan# 1087
Del ta R. T. 0.000 min
Lab Fi le: BN013870. D
Acq: 08 Mar 2021 15:24

Tgt Ion: 142 Resp: 17241
Ion Ratio Lower Upper
142 100
141 88.4 70.5 105.7
115 35.5 27.4 41.0

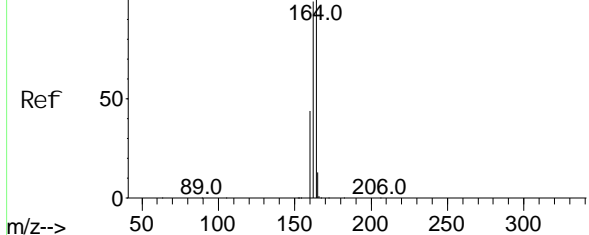
Abundance Scan 1087 (12.164 min): BN013870.D\data.ms



Abundance Scan 1087 (12.164 min): BN013870.D\data.ms (-1064) (-)

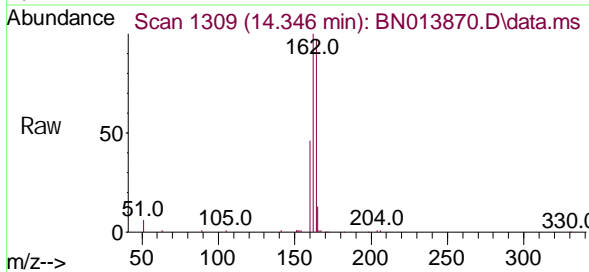


Abundance Scan 1312 (14.384 min): BN013740.D\data.ms (-1307) (-)

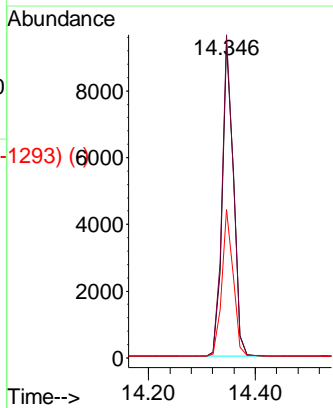
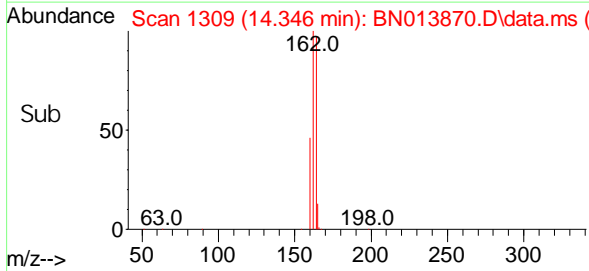


Acenaphthene-d10
Concen: 0.40 ng
RT: 14.346 min Scan# 1309
Delta R.T. 0.000 min
Lab File: BN013870.D
Acq: 08 Mar 2021 15:24

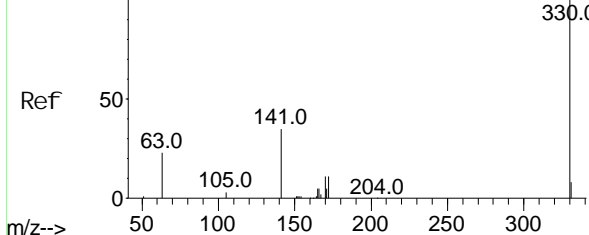
Instrument :
BNA_N
ClientSampled :
PB135037BS



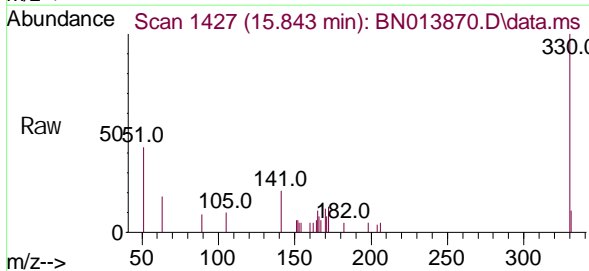
Tgt Ion: 164 Resp: 13804
Ion Ratio Lower Upper
164 100
162 102.9 79.6 119.4
160 47.2 36.0 54.0



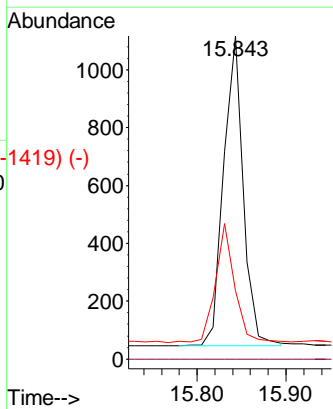
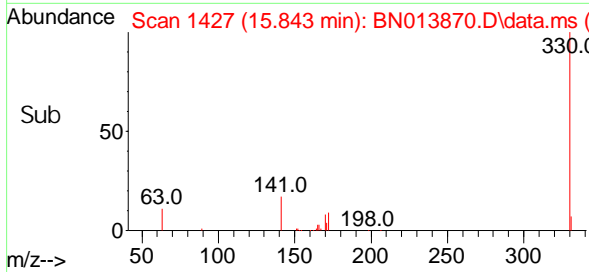
Abundance Scan 1429 (15.869 min): BN013740.D\data.ms (-1416) (-)



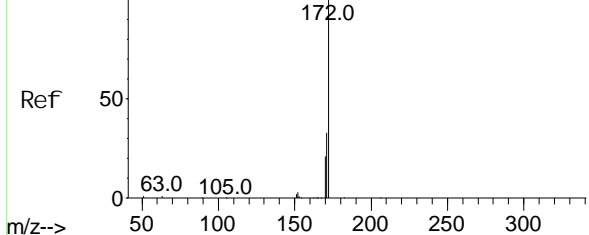
2,4,6-Tri bromophenol
Concen: 0.29 ng
RT: 15.843 min Scan# 1427
Delta R.T. 0.000 min
Lab File: BN013870.D
Acq: 08 Mar 2021 15:24



Tgt Ion: 330 Resp: 1642
Ion Ratio Lower Upper
330 100
332 0.0 0.0 0.0
141 37.7 26.8 40.2



Abundance Scan 1204 (13.014 min): BN013740.D\data.ms (-1204) (-)



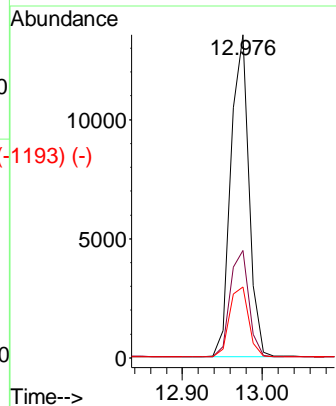
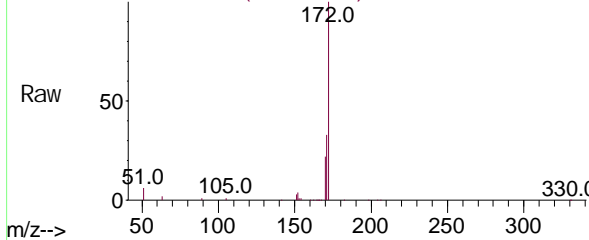
2-Fluorophenyl
Concn: 0.44 ng
RT: 12.976 min Scan# 1201
Delta R.T. 0.000 min
Lab File: BN013870.D
Acq: 08 Mar 2021 15:24

Instrument :
BNA_N
ClientSampled :
PB135037BS

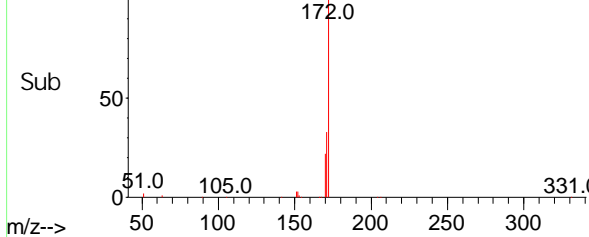
Tgt Ion: 172 Resp: 21573

Ion	Ratio	Lower	Upper
172	100		
171	33.2	28.6	42.8
170	21.9	18.9	28.3

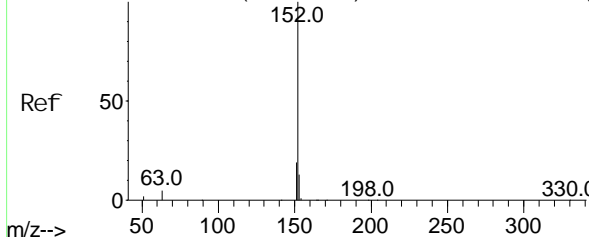
Abundance Scan 1201 (12.976 min): BN013870.D\data.ms



Abundance Scan 1201 (12.976 min): BN013870.D\data.ms (-1193) (-)



Abundance Scan 1290 (14.105 min): BN013740.D\data.ms (-1290) (-)

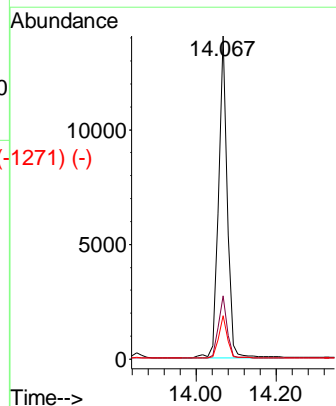
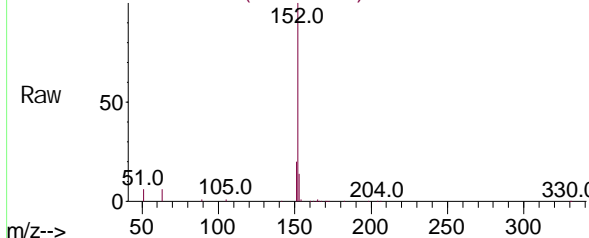


Acenaphthylene
Concn: 0.34 ng
RT: 14.067 min Scan# 1287
Delta R.T. 0.000 min
Lab File: BN013870.D
Acq: 08 Mar 2021 15:24

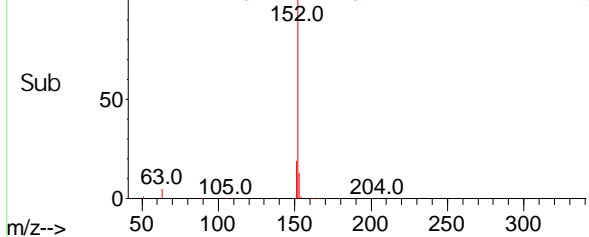
Tgt Ion: 152 Resp: 21096

Ion	Ratio	Lower	Upper
152	100		
151	19.3	15.7	23.5
153	13.1	10.5	15.7

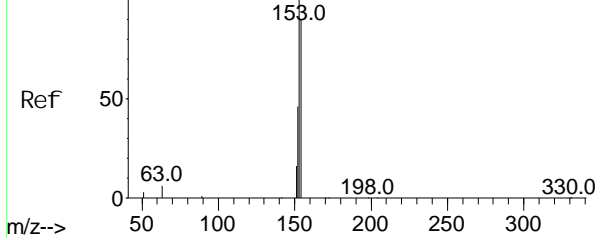
Abundance Scan 1287 (14.067 min): BN013870.D\data.ms



Abundance Scan 1287 (14.067 min): BN013870.D\data.ms (-1271) (-)



Abundance Scan 1317 (14.448 min): BN013740.D\data.ms (-1313) (-)

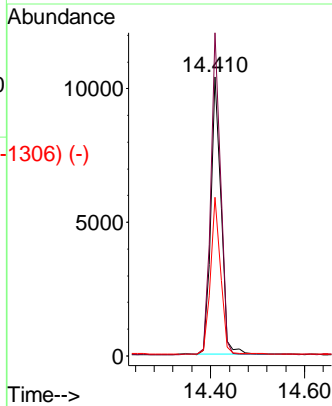
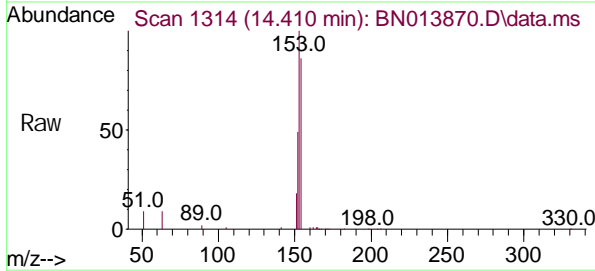


Acenaphthene
Concen: 0.40 ng
RT: 14.410 min Scan# 1314
Delta R.T. 0.000 min
Lab File: BN013870.D
Acq: 08 Mar 2021 15:24

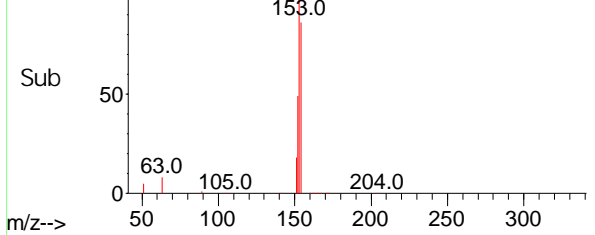
Instrument :
BNA_N
ClientSampled :
PB135037BS

Tgt Ion: 154 Resp: 15490

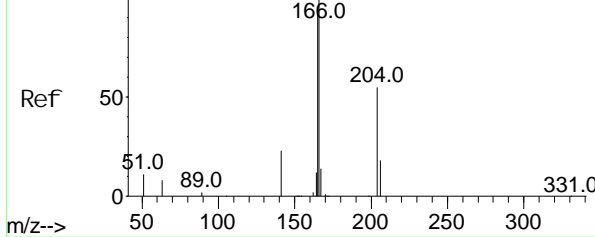
Ion	Ratio	Lower	Upper
154	100		
153	112.5	88.4	132.6
152	55.7	43.0	64.4



Abundance Scan 1314 (14.410 min): BN013870.D\data.ms (-1306) (-)



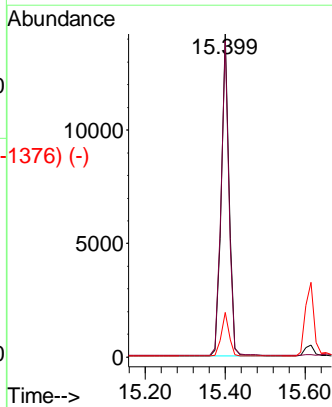
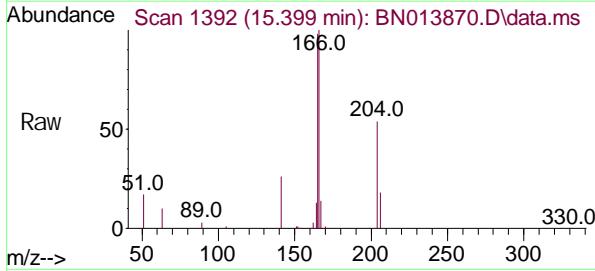
Abundance Scan 1395 (15.437 min): BN013740.D\data.ms (-1315) (-)



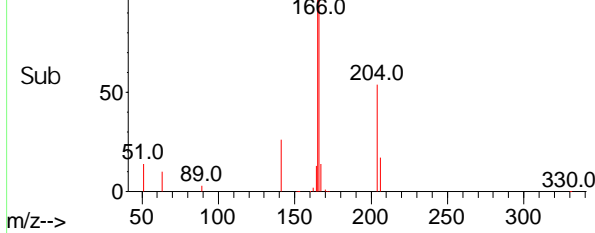
Fluorene
Concen: 0.39 ng
RT: 15.399 min Scan# 1392
Delta R.T. 0.000 min
Lab File: BN013870.D
Acq: 08 Mar 2021 15:24

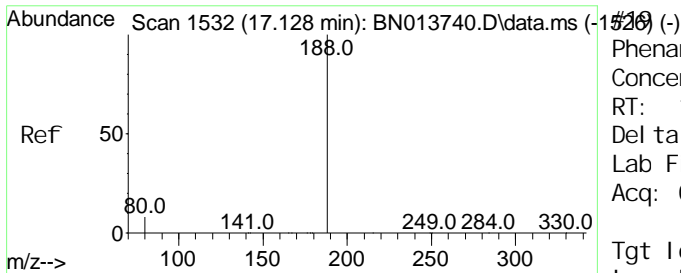
Tgt Ion: 166 Resp: 19284

Ion	Ratio	Lower	Upper
166	100		
165	98.2	77.8	116.8
167	13.6	10.6	16.0



Abundance Scan 1392 (15.399 min): BN013870.D\data.ms (-1376) (-)

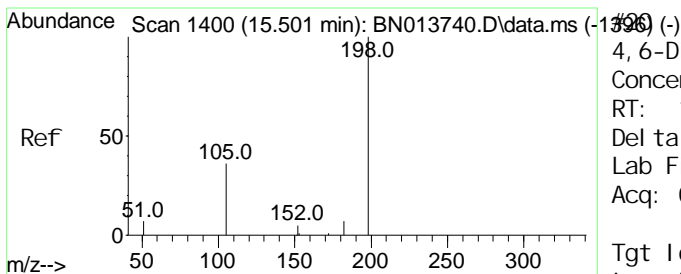
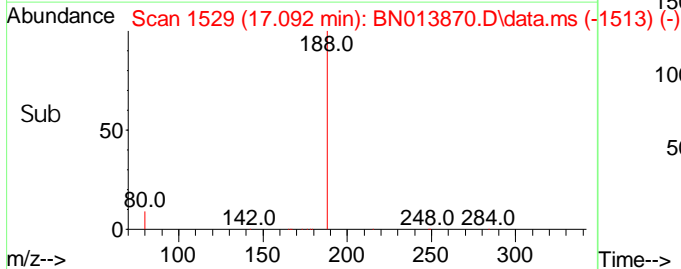
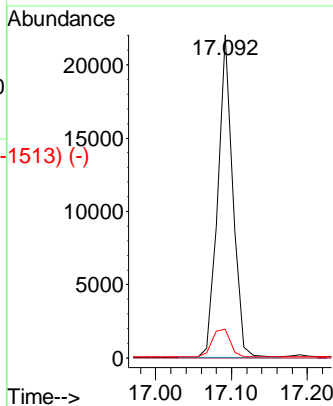
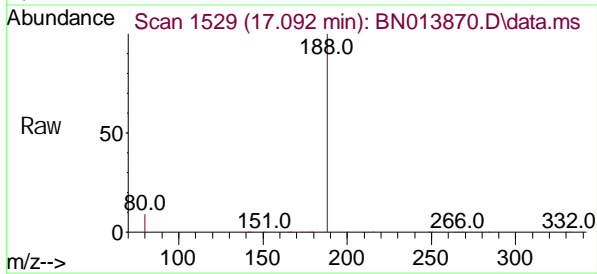




Phenanthrene-d10
 Concen: 0.40 ng
 RT: 17.092 min Scan# 1529
 Delta R.T. 0.001 min
 Lab File: BN013870.D
 Acq: 08 Mar 2021 15:24

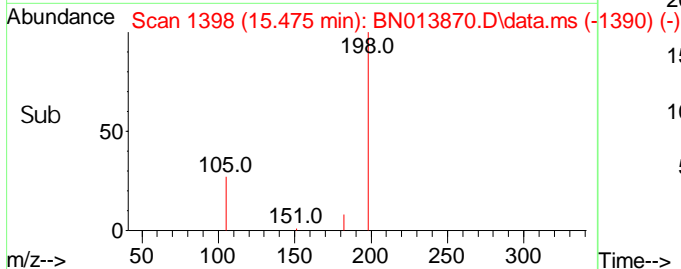
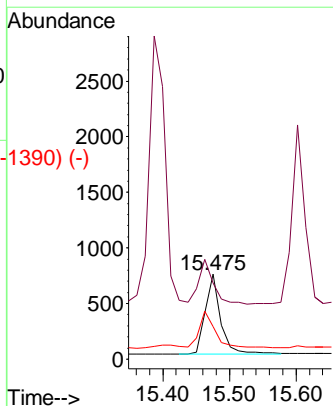
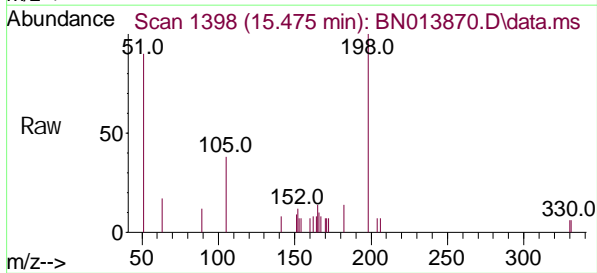
Instrument :
 BNA_N
ClientSampled :
 PB135037BS

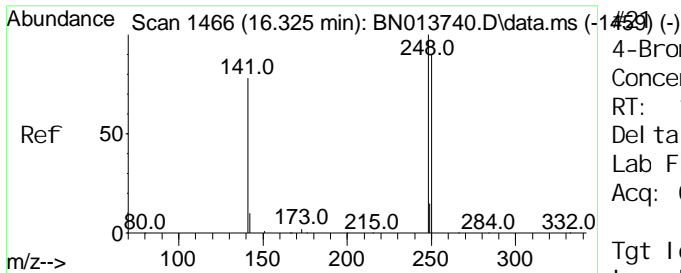
Tgt Ion	Ratio	Lower	Upper
188	100		
94	0.0	0.0	0.0
80	8.8	9.0	13.6#



4,6-Di nitro-2-methyl phenol
 Concen: 0.56 ng
 RT: 15.475 min Scan# 1398
 Delta R.T. 0.000 min
 Lab File: BN013870.D
 Acq: 08 Mar 2021 15:24

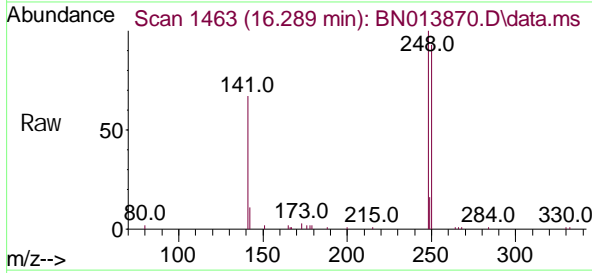
Tgt Ion	Ratio	Lower	Upper
198	100		
51	89.9	61.7	92.5
105	38.5	33.0	49.6





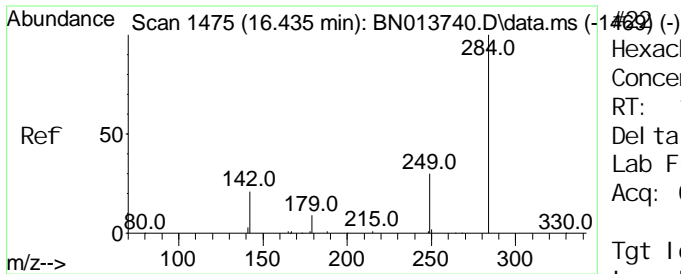
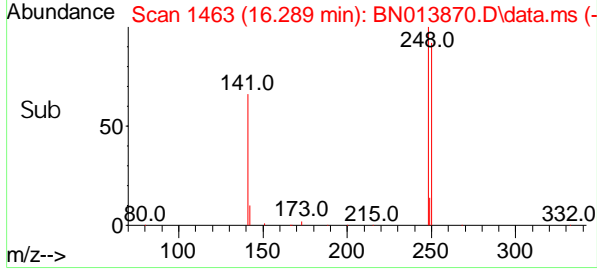
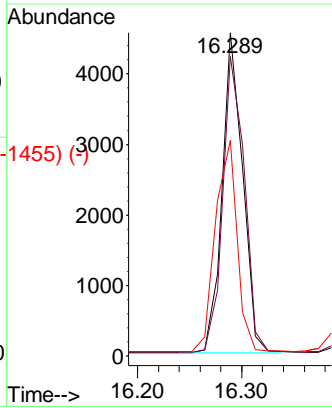
4-Bromophenyl -phenyl ether
 Concen: 0.38 ng
 RT: 16.289 min Scan# 1463
 Delta R.T. 0.001 min
 Lab File: BN013870.D
 Acq: 08 Mar 2021 15:24

Instrument :
 BNA_N
ClientSampled :
 PB135037BS

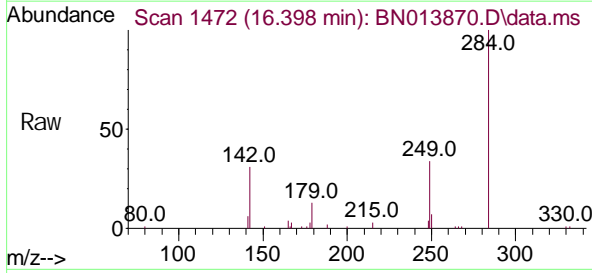


Tgt Ion: 248 Resp: 6271

Ion	Ratio	Lower	Upper
248	100		
250	92.6	75.5	113.3
141	66.6	53.8	80.8

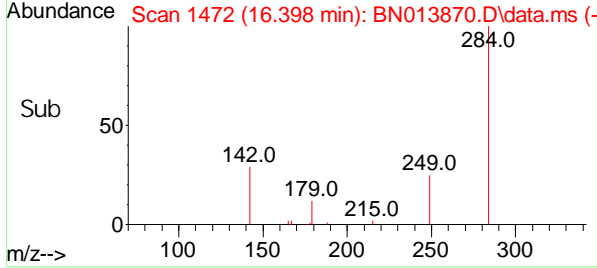
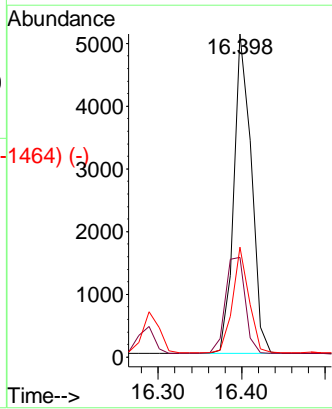


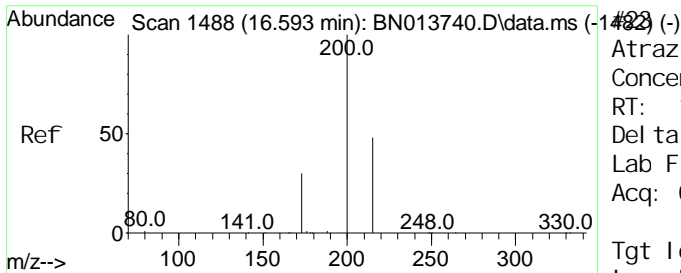
Hexachlorobenzene
 Concen: 0.44 ng
 RT: 16.398 min Scan# 1472
 Delta R.T. 0.001 min
 Lab File: BN013870.D
 Acq: 08 Mar 2021 15:24



Tgt Ion: 284 Resp: 7472

Ion	Ratio	Lower	Upper
284	100		
142	34.7	27.9	41.9
249	30.8	24.2	36.2

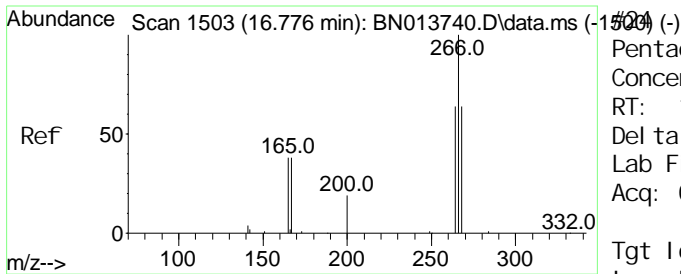
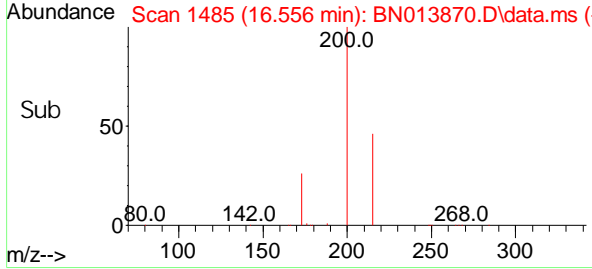
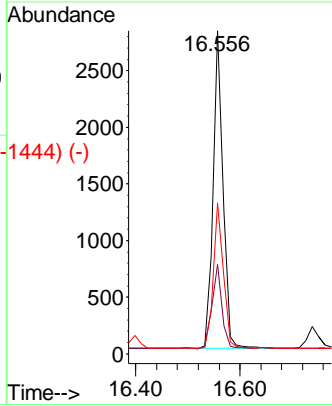
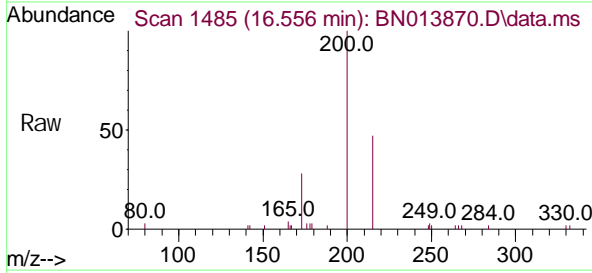




Atrazine
 Concen: 0.24 ng
 RT: 16.556 min Scan# 1485
 Delta R.T. 0.001 min
 Lab File: BN013870.D
 Acq: 08 Mar 2021 15:24

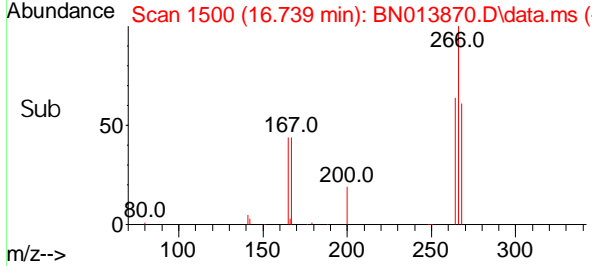
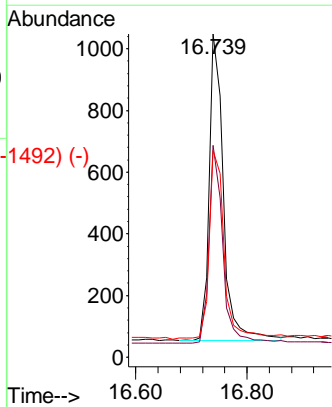
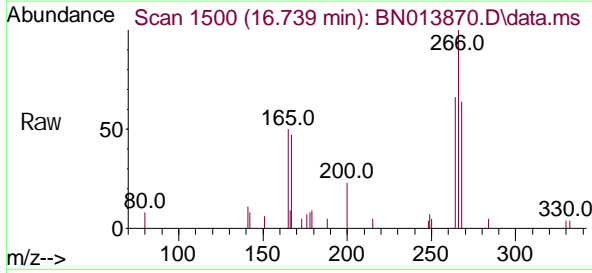
Instrument :
 BNA_N
ClientSampled :
 PB135037BS

Tgt Ion	Ratio	Lower	Upper
200	100		
173	27.7	18.6	28.0
215	46.6	41.0	61.6

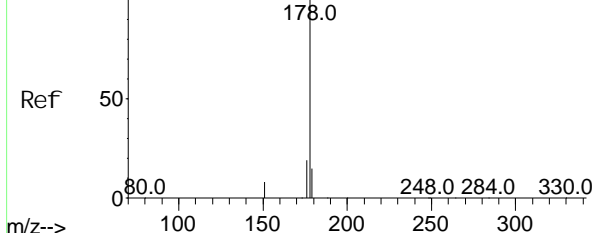


Pentachlorophenol
 Concen: 0.32 ng
 RT: 16.739 min Scan# 1500
 Delta R.T. 0.001 min
 Lab File: BN013870.D
 Acq: 08 Mar 2021 15:24

Tgt Ion	Ratio	Lower	Upper
266	100		
264	64.4	51.6	77.4
268	68.5	54.6	82.0



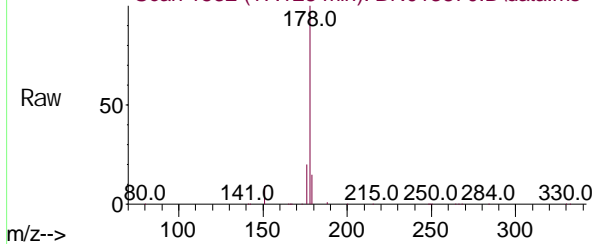
Abundance Scan 1535 (17.165 min): BN013740.D\data.ms (-1525) (-)



Phenanthrene
Concen: 0.42 ng
RT: 17.128 min Scan# 1532
Delta R.T. 0.001 min
Lab File: BN013870.D
Acq: 08 Mar 2021 15:24

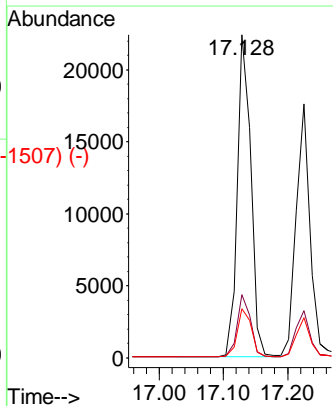
Instrument :
BNA_N
ClientSampled :
PB135037BS

Abundance Scan 1532 (17.128 min): BN013870.D\data.ms

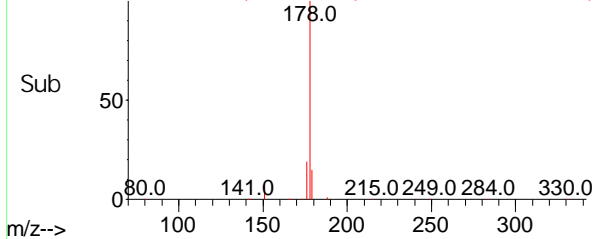


Tgt Ion: 178 Resp: 33113

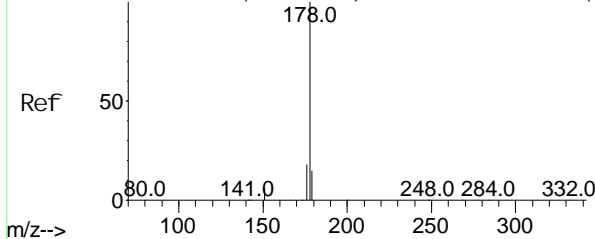
Ion	Ratio	Lower	Upper
178	100		
176	19.0	15.0	22.4
179	15.3	12.3	18.5



Abundance Scan 1532 (17.128 min): BN013870.D\data.ms (-1507) (-)

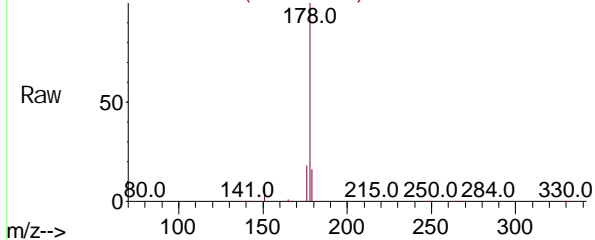


Abundance Scan 1543 (17.262 min): BN013740.D\data.ms (-1526) (-)



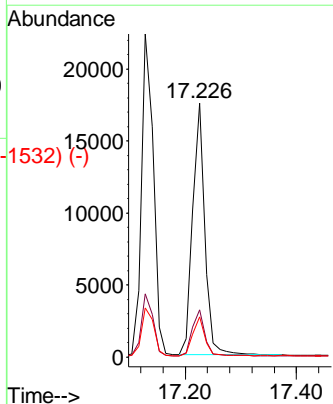
Anthracene
Concen: 0.35 ng
RT: 17.226 min Scan# 1540
Delta R.T. 0.001 min
Lab File: BN013870.D
Acq: 08 Mar 2021 15:24

Abundance Scan 1540 (17.226 min): BN013870.D\data.ms

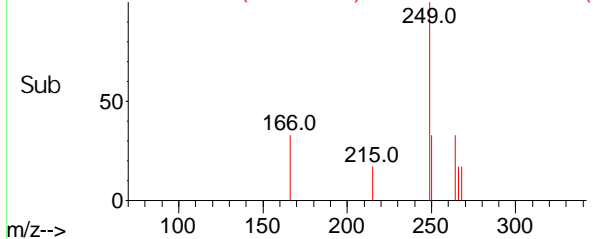


Tgt Ion: 178 Resp: 26387

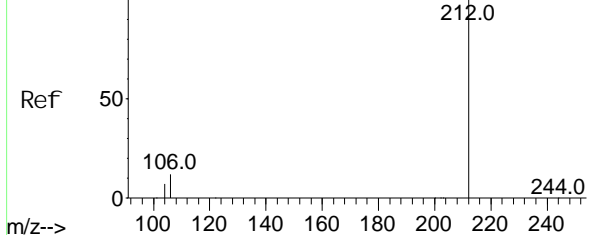
Ion	Ratio	Lower	Upper
178	100		
176	18.5	14.6	21.8
179	15.4	12.2	18.2



Abundance Scan 1540 (17.226 min): BN013870.D\data.ms (-1532) (-)



Abundance Scan 1835 (19.159 min): BN013740.D\data.ms (-1825) (-)

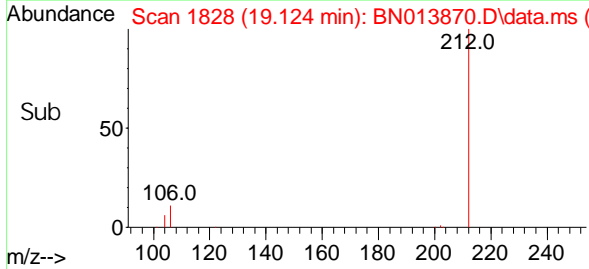
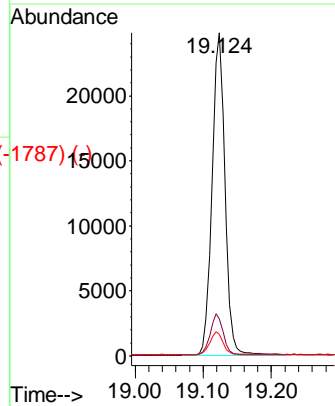
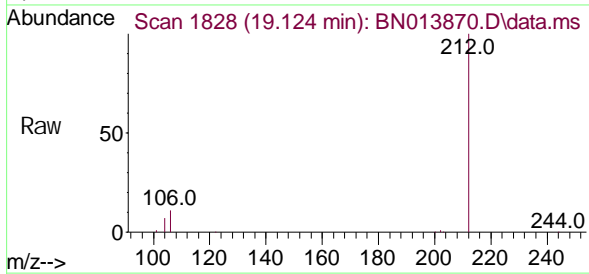


Fluoranthene-d10
Concen: 0.37 ng
RT: 19.124 min Scan# 1828
Delta R.T. 0.003 min
Lab File: BN013870.D
Acq: 08 Mar 2021 15:24

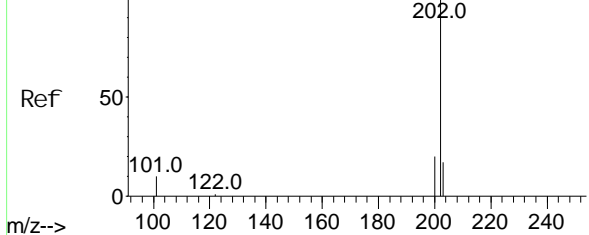
Instrument :
BNA_N
ClientSampled :
PB135037BS

Tgt Ion: 212 Resp: 32755

Ion	Ratio	Lower	Upper
212	100		
106	12.7	9.7	14.5
104	7.2	5.5	8.3



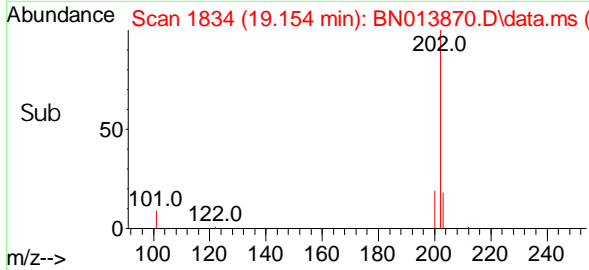
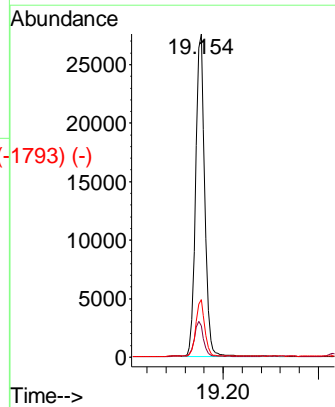
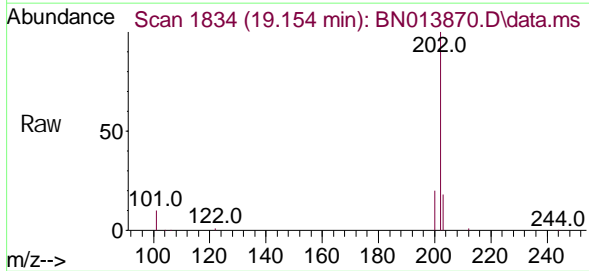
Abundance Scan 1841 (19.188 min): BN013740.D\data.ms (-1823) (-)



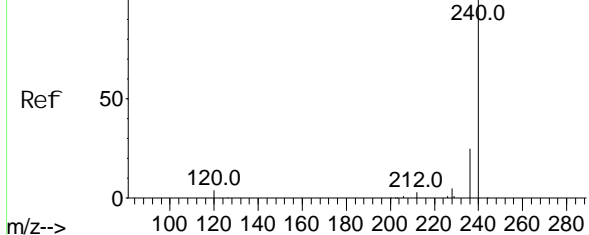
Fluoranthene
Concen: 0.39 ng
RT: 19.154 min Scan# 1834
Delta R.T. 0.003 min
Lab File: BN013870.D
Acq: 08 Mar 2021 15:24

Tgt Ion: 202 Resp: 36329

Ion	Ratio	Lower	Upper
202	100		
101	11.0	8.1	12.1
203	17.2	13.9	20.9



Abundance Scan 2129 (21.314 min): BN013740.D\data.ms (-2129) (-)

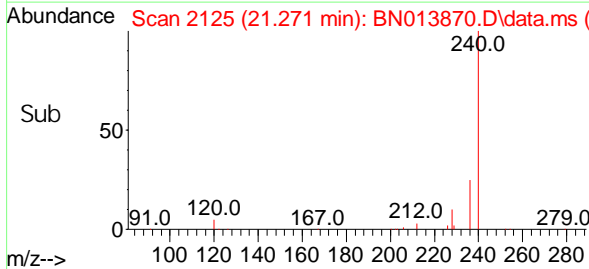
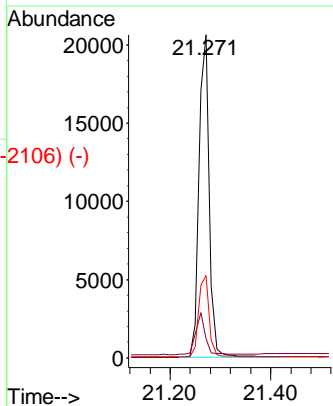
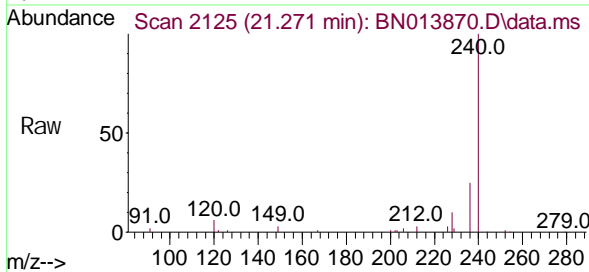


Chrysene-d12
Concen: 0.40 ng
RT: 21.271 min Scan# 2125
Delta R.T. 0.003 min
Lab File: BN013870.D
Acq: 08 Mar 2021 15:24

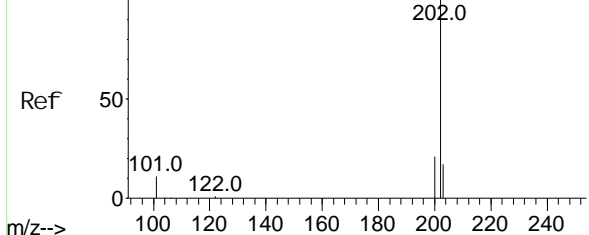
Instrument :
BNA_N
ClientSampled :
PB135037BS

Tgt Ion: 240 Resp: 29148

Ion	Ratio	Lower	Upper
240	100		
120	5.9	10.2	15.4#
236	25.4	21.3	31.9



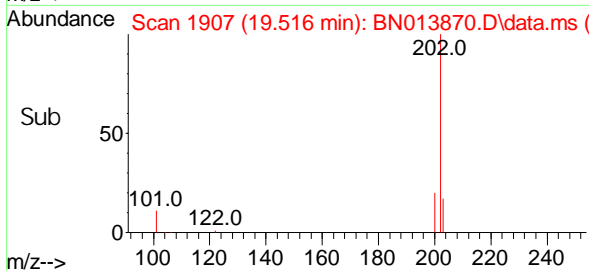
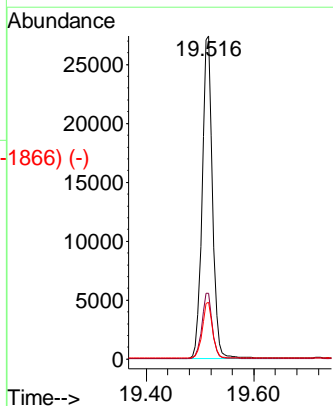
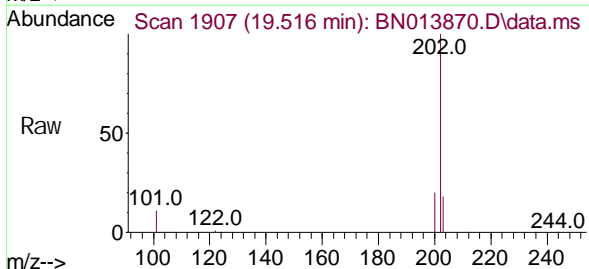
Abundance Scan 1914 (19.551 min): BN013740.D\data.ms (-1902) (-)



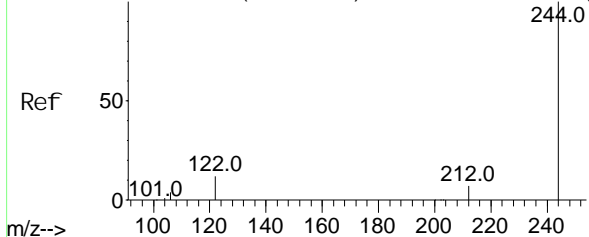
Pyrene
Concen: 0.41 ng
RT: 19.516 min Scan# 1907
Delta R.T. 0.003 min
Lab File: BN013870.D
Acq: 08 Mar 2021 15:24

Tgt Ion: 202 Resp: 36758

Ion	Ratio	Lower	Upper
202	100		
200	20.4	16.3	24.5
203	17.4	14.0	21.0

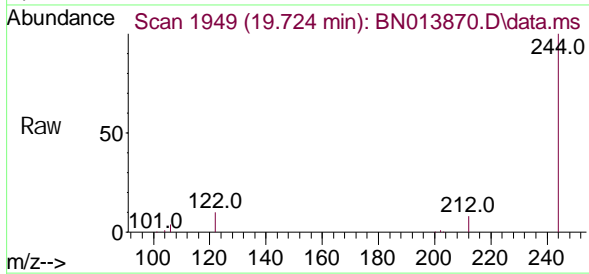


Abundance Scan 1957 (19.764 min): BN013740.D\data.ms (-1948) (-)



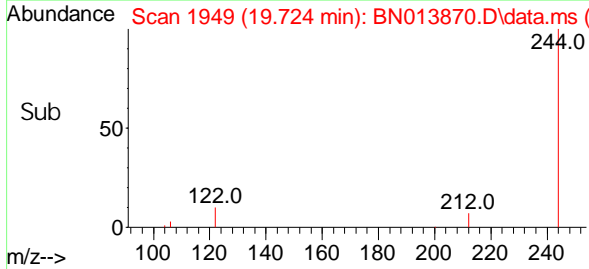
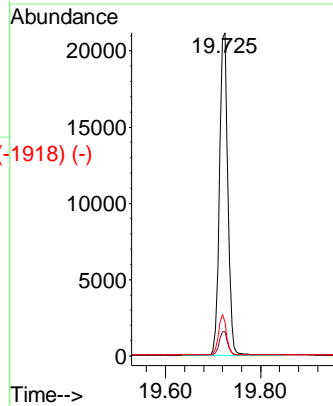
Terphenyl -d14
Concen: 0.40 ng
RT: 19.724 min Scan# 1949
Delta R. T. 0.003 min
Lab File: BN013870.D
Acq: 08 Mar 2021 15:24

Instrument :
BNA_N
ClientSampled :
PB135037BS

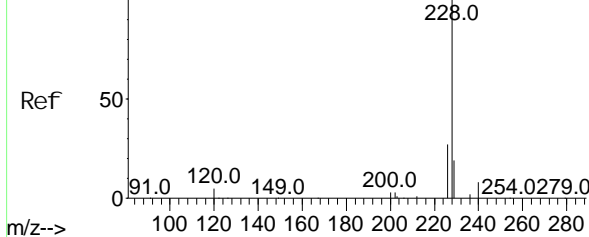


Tgt Ion: 244 Resp: 25926

Ion	Ratio	Lower	Upper
244	100		
212	7.5	6.1	9.1
122	10.4	9.8	14.8



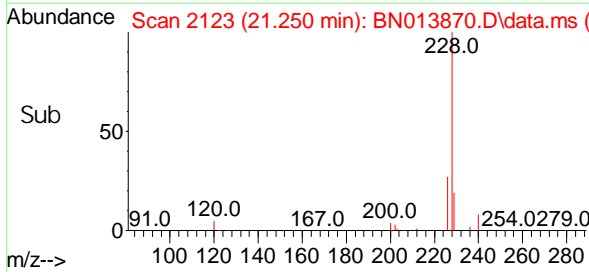
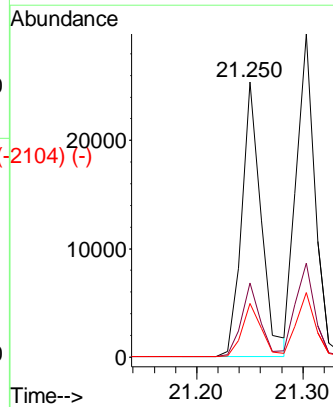
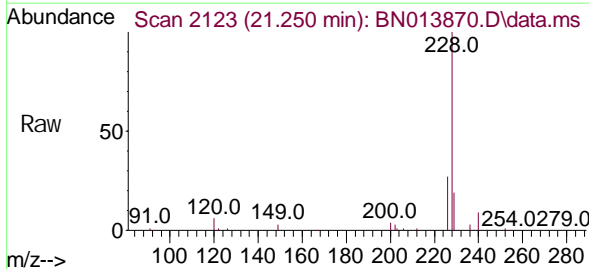
Abundance Scan 2127 (21.293 min): BN013740.D\data.ms (-2120) (-)



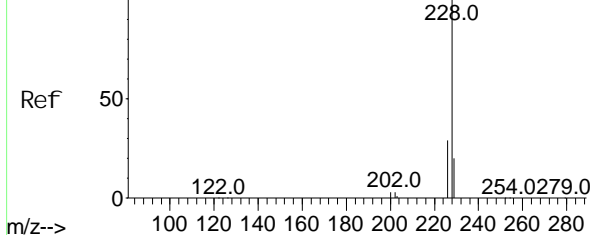
Benzo(a)anthracene
Concen: 0.36 ng
RT: 21.250 min Scan# 2123
Delta R. T. 0.003 min
Lab File: BN013870.D
Acq: 08 Mar 2021 15:24

Tgt Ion: 228 Resp: 31978

Ion	Ratio	Lower	Upper
228	100		
226	26.9	20.5	30.7
229	19.4	16.2	24.4

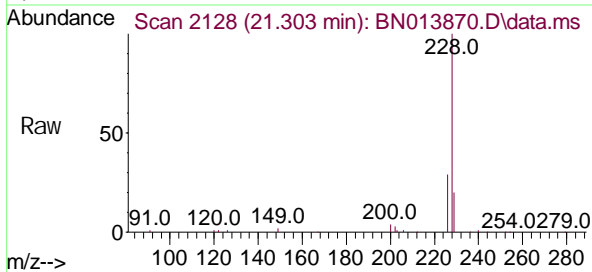


Abundance Scan 2132 (21.346 min): BN013740.D\data.ms (-2128) (-)



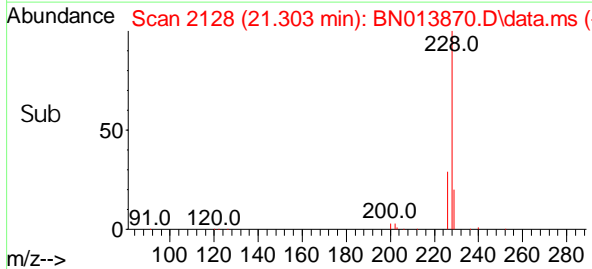
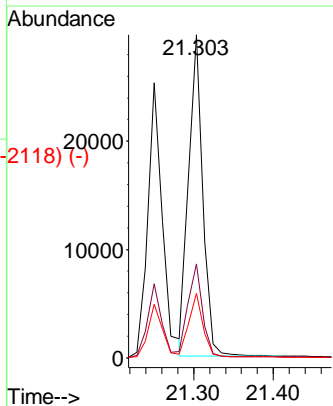
Chrysene
Concen: 0.42 ng
RT: 21.303 min Scan# 2128
Delta R.T. 0.003 min
Lab File: BN013870.D
Acq: 08 Mar 2021 15:24

Instrument :
BNA_N
ClientSampleId :
PB135037BS

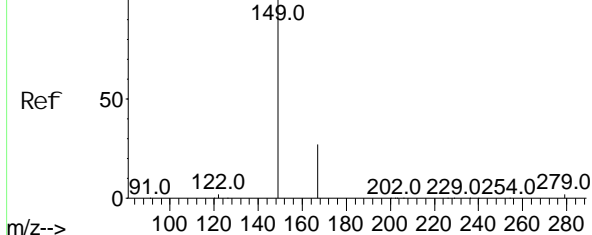


Tgt Ion: 228 Resp: 36426

Ion	Ratio	Lower	Upper
228	100		
226	29.1	24.3	36.5
229	19.9	15.1	22.7



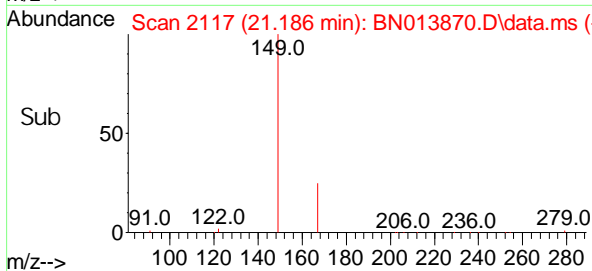
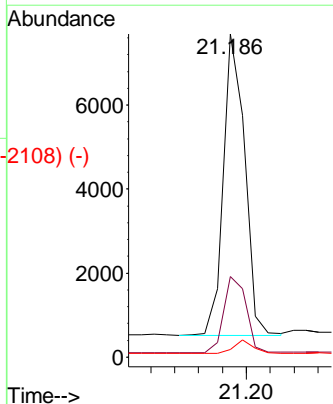
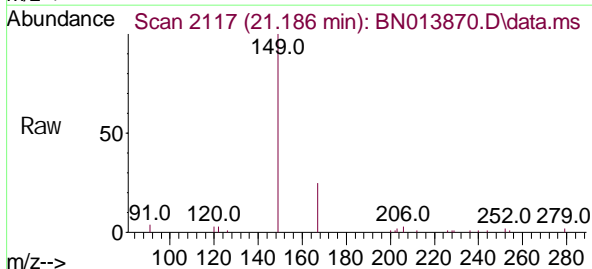
Abundance Scan 2123 (21.250 min): BN013740.D\data.ms (-2120) (-)



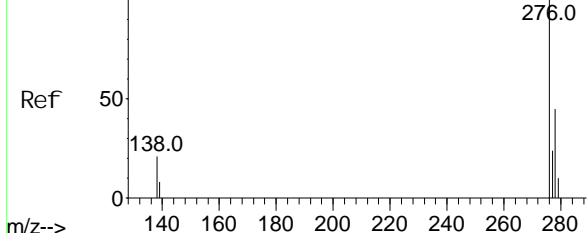
Bis(2-ethyl hexyl)phthalate
Concen: 0.21 ng
RT: 21.186 min Scan# 2117
Delta R.T. -0.008 min
Lab File: BN013870.D
Acq: 08 Mar 2021 15:24

Tgt Ion: 149 Resp: 8986

Ion	Ratio	Lower	Upper
149	100		
167	26.5	22.1	33.1
279	4.0	3.5	5.3



Abundance Scan 3232 (25.831 min): BN013740.D\data.ms (-3205) (-)



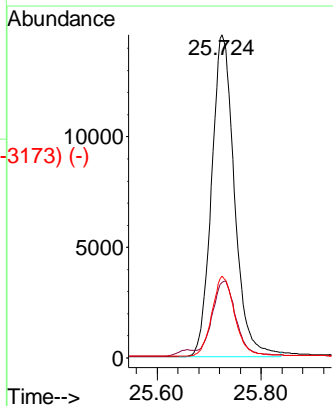
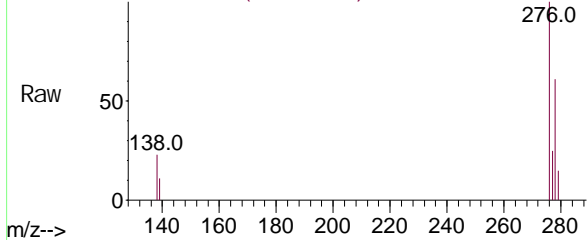
Indeno(1, 2, 3-cd)pyrene
Concen: 0.42 ng
RT: 25.724 min Scan# 3201
Delta R.T. -0.004 min
Lab File: BN013870.D
Acq: 08 Mar 2021 15:24

Instrument :
BNA_N
ClientSampled :
PB135037BS

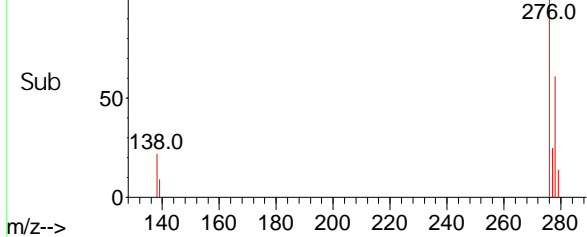
Tgt Ion: 276 Resp: 44547

Ion	Ratio	Lower	Upper
276	100		
138	23.2	19.8	29.6
277	24.8	19.9	29.9

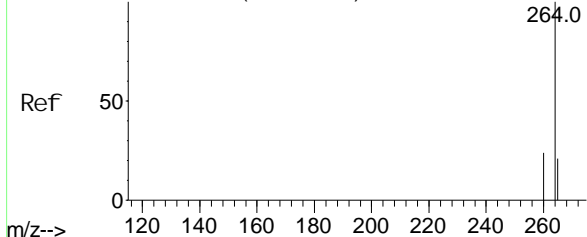
Abundance Scan 3201 (25.724 min): BN013870.D\data.ms



Abundance Scan 3201 (25.724 min): BN013870.D\data.ms (-3173) (-)



Abundance Scan 2568 (23.558 min): BN013740.D\data.ms (-2532) (-)

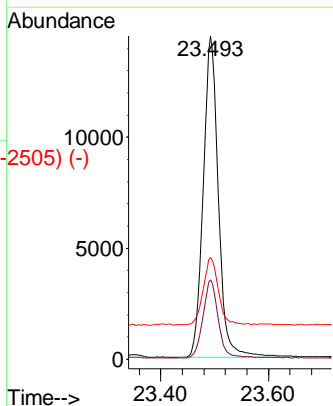
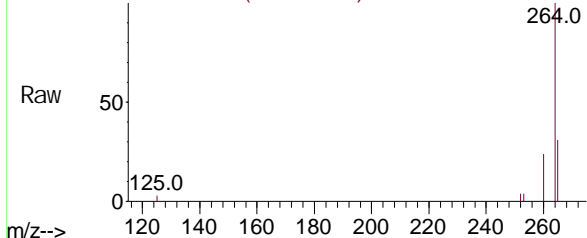


Perylene-d12
Concen: 0.40 ng
RT: 23.493 min Scan# 2549
Delta R.T. -0.000 min
Lab File: BN013870.D
Acq: 08 Mar 2021 15:24

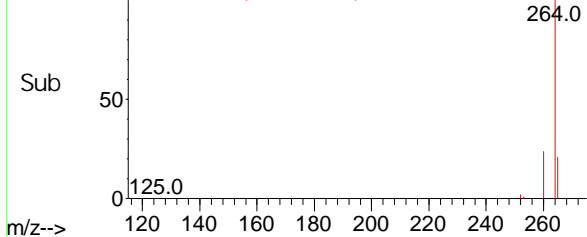
Tgt Ion: 264 Resp: 28336

Ion	Ratio	Lower	Upper
264	100		
260	24.5	19.3	28.9
265	31.4	66.2	99.4#

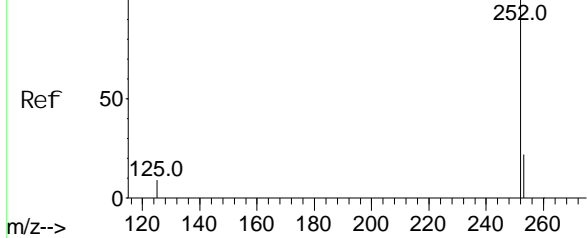
Abundance Scan 2549 (23.493 min): BN013870.D\data.ms



Abundance Scan 2549 (23.493 min): BN013870.D\data.ms (-2505) (-)



Abundance Scan 2371 (22.883 min): BN013740.D\data.ms (-2371) (-)

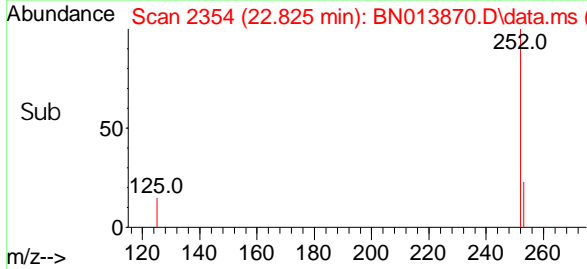
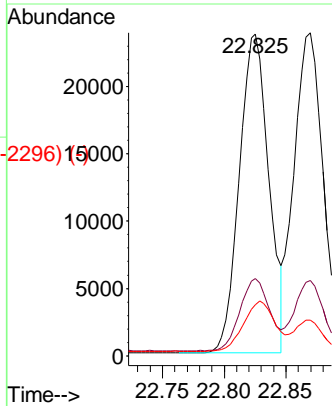
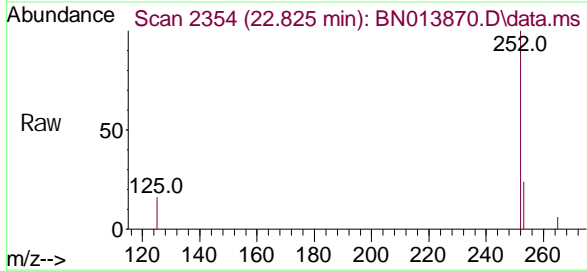


Benzo(b) fluoranthene
Concen: 0.43 ng
RT: 22.825 min Scan# 2354
Delta R.T. -0.001 min
Lab File: BN013870.D
Acq: 08 Mar 2021 15:24

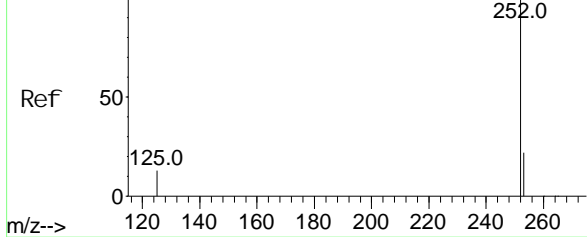
Instrument :
BNA_N
Client Sampled :
PB135037BS

Tgt Ion: 252 Resp: 39263

Ion	Ratio	Lower	Upper
252	100		
253	24.1	20.4	30.6
125	15.9	11.6	17.4



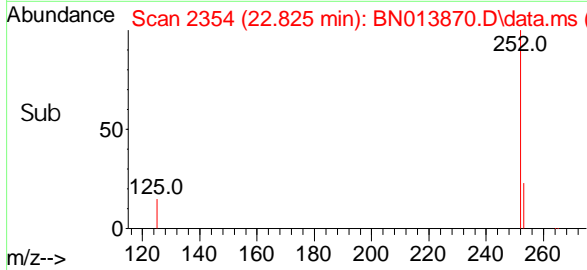
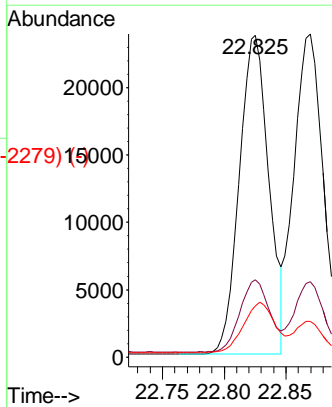
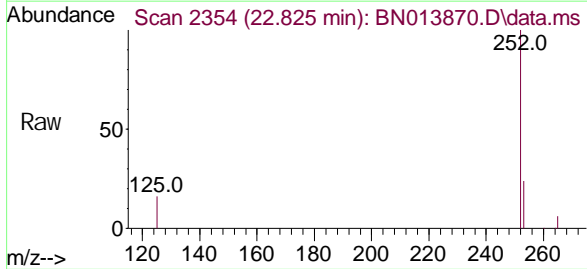
Abundance Scan 2384 (22.928 min): BN013740.D\data.ms (-2378) (-)



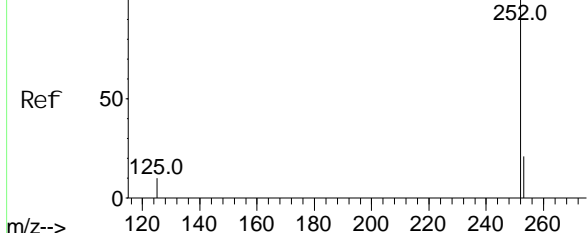
Benzo(k) fluoranthene
Concen: 0.45 ng
RT: 22.825 min Scan# 2354
Delta R.T. -0.042 min
Lab File: BN013870.D
Acq: 08 Mar 2021 15:24

Tgt Ion: 252 Resp: 39263

Ion	Ratio	Lower	Upper
252	100		
253	24.1	20.5	30.7
125	15.9	12.3	18.5



Abundance Scan 2539 (23.458 min): BN013740.D\data.ms (-2520) (-)



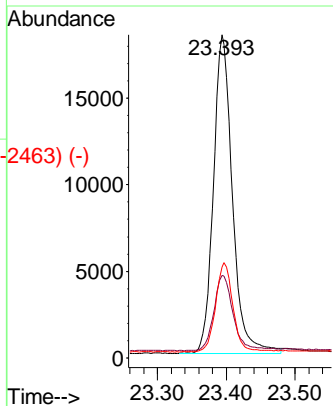
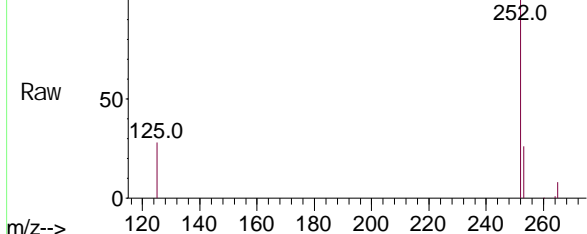
Benzo(a)pyrene
Concen: 0.43 ng
RT: 23.393 min Scan# 2520
Delta R.T. -0.004 min
Lab File: BN013870.D
Acq: 08 Mar 2021 15:24

Instrument :
BNA_N
ClientSampled :
PB135037BS

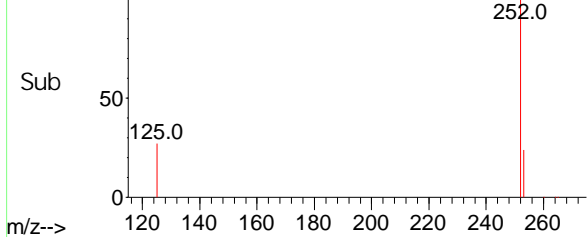
Tgt Ion: 252 Resp: 35318

Ion	Ratio	Lower	Upper
252	100		
253	25.5	21.8	32.6
125	28.2	14.6	21.8#

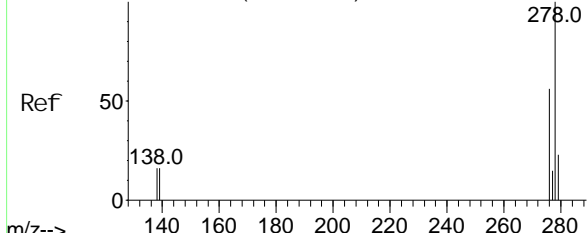
Abundance Scan 2520 (23.393 min): BN013870.D\data.ms



Abundance Scan 2520 (23.393 min): BN013870.D\data.ms (-2463) (-)



Abundance Scan 3239 (25.854 min): BN013740.D\data.ms (-3278) (-)

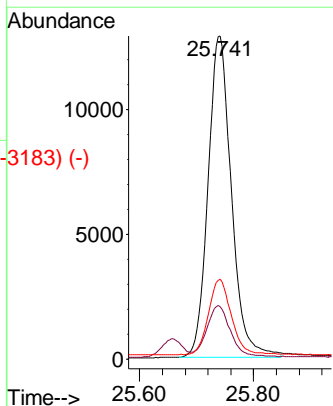
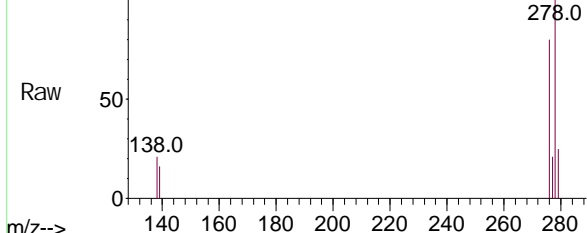


Di benzo(a, h)anthracene
Concen: 0.42 ng
RT: 25.741 min Scan# 3206
Delta R.T. -0.001 min
Lab File: BN013870.D
Acq: 08 Mar 2021 15:24

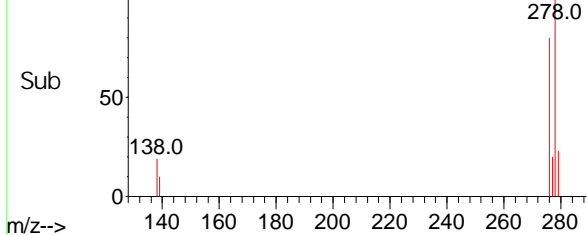
Tgt Ion: 278 Resp: 36627

Ion	Ratio	Lower	Upper
278	100		
139	16.1	13.1	19.7
279	24.7	21.4	32.0

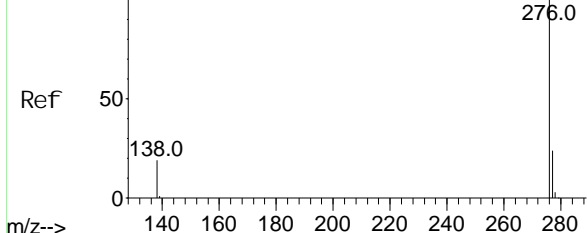
Abundance Scan 3206 (25.741 min): BN013870.D\data.ms



Abundance Scan 3206 (25.741 min): BN013870.D\data.ms (-3183) (-)



Abundance Scan 3434 (26.522 min): BN013740.D\data.ms (-3434) (-)

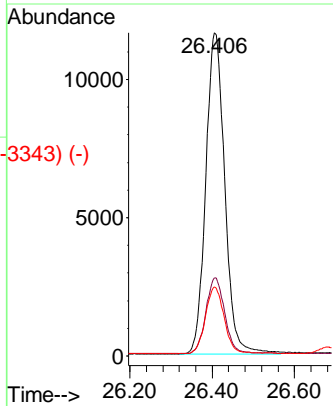
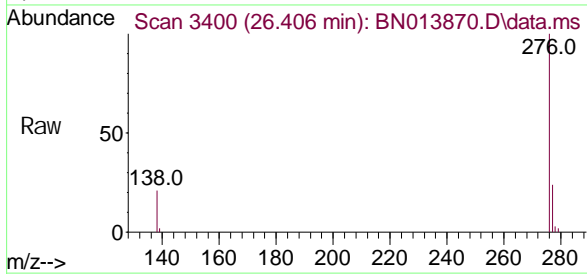


Benzo(g, h, i)peryl ene
 Concen: 0.43 ng
 RT: 26.406 min Scan# 3400
 Del ta R. T. -0.004 min
 Lab Fi le: BN013870.D
 Acq: 08 Mar 2021 15:24

Instrument :
 BNA_N
ClientSampled :
 PB135037BS

Tgt Ion: 276 Resp: 37243

Ion	Ratio	Lower	Upper
276	100		
277	24.2	20.0	30.0
138	21.4	17.8	26.8



Abundance Scan 3400 (26.406 min): BN013870.D\data.ms (-3343) (-)

