

Data Path : Z:\svoasrv\HPCHEM1\BNA_N\Data\BN030821\
 Data File : BN013871.D
 Acq On : 08 Mar 2021 16:00
 Operator : CG/JU
 Sample : PB135037BSD
 Misc :
 ALS Vial : 5 Sample Multiplier: 1

Instrument :
 BNA_N
 ClientSampled :
 PB135037BSD

Manual Integrations
 APPROVED

mohammad
 3/9/2021 12:19:55 PM

Quant Time: Mar 08 16:36:09 2021
 Quant Method : Z:\SVOASRV\HPCHEM1\BNA_N\METHODS\8270-SIM-BN022421.M
 Quant Title : ASP BNA STANDARDS FOR 5 POINT CALIBRATION
 QLast Update : Mon Mar 08 10:32:13 2021
 Response via : Initial Calibration

| Compound | R.T. | QIon | Response | Conc | Units | Dev(Min) | |
|-------------------------------|--------|------|----------|------|-------|----------|--------|
| Internal Standards | | | | | | | |
| 1) 1,4-Dichlorobenzene-d4 | 7.725 | 152 | 7549 | 0.40 | ng | 0.00 | |
| 7) Naphthalene-d8 | 10.505 | 136 | 28934 | 0.40 | ng | # 0.00 | |
| 13) Acenaphthene-d10 | 14.346 | 164 | 16067 | 0.40 | ng | 0.00 | |
| 19) Phenanthrene-d10 | 17.092 | 188 | 34537 | 0.40 | ng | # 0.00 | |
| 29) Chrysene-d12 | 21.261 | 240 | 34203 | 0.40 | ng | 0.00 | |
| 36) Perylene-d12 | 23.489 | 264 | 33268 | 0.40 | ng | # 0.00 | |
| System Monitoring Compounds | | | | | | | |
| 4) 2-Fluorophenol | 5.317 | 112 | 7006 | 0.35 | ng | 0.00 | |
| 5) Phenol-d6 | 6.887 | 99 | 9300 | 0.35 | ng | 0.00 | |
| 8) Nitrobenzene-d5 | 8.857 | 82 | 7483 | 0.40 | ng | 0.00 | |
| 11) 2-Methylnaphthalene-d10 | 12.089 | 152 | 18525 | 0.40 | ng | 0.00 | |
| 14) 2,4,6-Tribromophenol | 15.843 | 330 | 1925 | 0.29 | ng | 0.00 | |
| 15) 2-Fluorobiphenyl | 12.976 | 172 | 24712 | 0.44 | ng | 0.00 | |
| 27) Fluoranthene-d10 | 19.119 | 212 | 38364 | 0.38 | ng | 0.00 | |
| 31) Terphenyl-d14 | 19.720 | 244 | 30027 | 0.40 | ng | 0.00 | |
| | | | | | | | Qvalue |
| 2) 1,4-Dioxane | 3.255 | 88 | 3724 | 0.41 | ng | | 99 |
| 3) n-Nitrosodimethylamine | 3.585 | 42 | 2708 | 0.38 | ng | # | 91 |
| 6) bis(2-Chloroethyl)ether | 7.153 | 93 | 8481 | 0.44 | ng | | 95 |
| 9) Naphthalene | 10.543 | 128 | 29641 | 0.42 | ng | | 99 |
| 10) Hexachlorobutadiene | 10.835 | 225 | 5590 | 0.41 | ng | # | 99 |
| 12) 2-Methylnaphthalene | 12.164 | 142 | 20026 | 0.40 | ng | | 99 |
| 16) Acenaphthylene | 14.067 | 152 | 24598 | 0.34 | ng | | 99 |
| 17) Acenaphthene | 14.410 | 154 | 18258 | 0.41 | ng | | 99 |
| 18) Fluorene | 15.399 | 166 | 22863 | 0.40 | ng | | 99 |
| 20) 4,6-Dinitro-2-methylph... | 15.475 | 198 | 1333 | 0.56 | ng | | 89 |
| 21) 4-Bromophenyl-phenylether | 16.289 | 248 | 7315 | 0.39 | ng | | 98 |
| 22) Hexachlorobenzene | 16.398 | 284 | 8728 | 0.44 | ng | | 99 |
| 23) Atrazine | 16.557 | 200 | 4345 | 0.25 | ng | | 96 |
| 24) Pentachlorophenol | 16.739 | 266 | 1985 | 0.31 | ng | | 97 |
| 25) Phenanthrene | 17.128 | 178 | 38017 | 0.42 | ng | | 100 |
| 26) Anthracene | 17.226 | 178 | 31026 | 0.35 | ng | | 100 |
| 28) Fluoranthene | 19.154 | 202 | 42361 | 0.39 | ng | | 99 |
| 30) Pyrene | 19.511 | 202 | 42754 | 0.41 | ng | | 100 |
| 32) Benzo(a)anthracene | 21.250 | 228 | 37585 | 0.36 | ng | | 98 |
| 33) Chrysene | 21.303 | 228 | 43123 | 0.42 | ng | | 98 |
| 34) Bis(2-ethylhexyl)phtha... | 21.186 | 149 | 11044 | 0.22 | ng | | 98 |
| 35) Indeno(1,2,3-cd)pyrene | 25.721 | 276 | 52573 | 0.42 | ng | | 99 |
| 37) Benzo(b)fluoranthene | 22.822 | 252 | 46212 | 0.43 | ng | | 95 |
| 38) Benzo(k)fluoranthene | 22.866 | 252 | 47331m | 0.46 | ng | | |
| 39) Benzo(a)pyrene | 23.393 | 252 | 43653 | 0.46 | ng | # | 86 |
| 40) Dibenzo(a,h)anthracene | 25.738 | 278 | 43457 | 0.43 | ng | | 97 |
| 41) Benzo(g,h,i)perylene | 26.406 | 276 | 44697 | 0.44 | ng | | 98 |

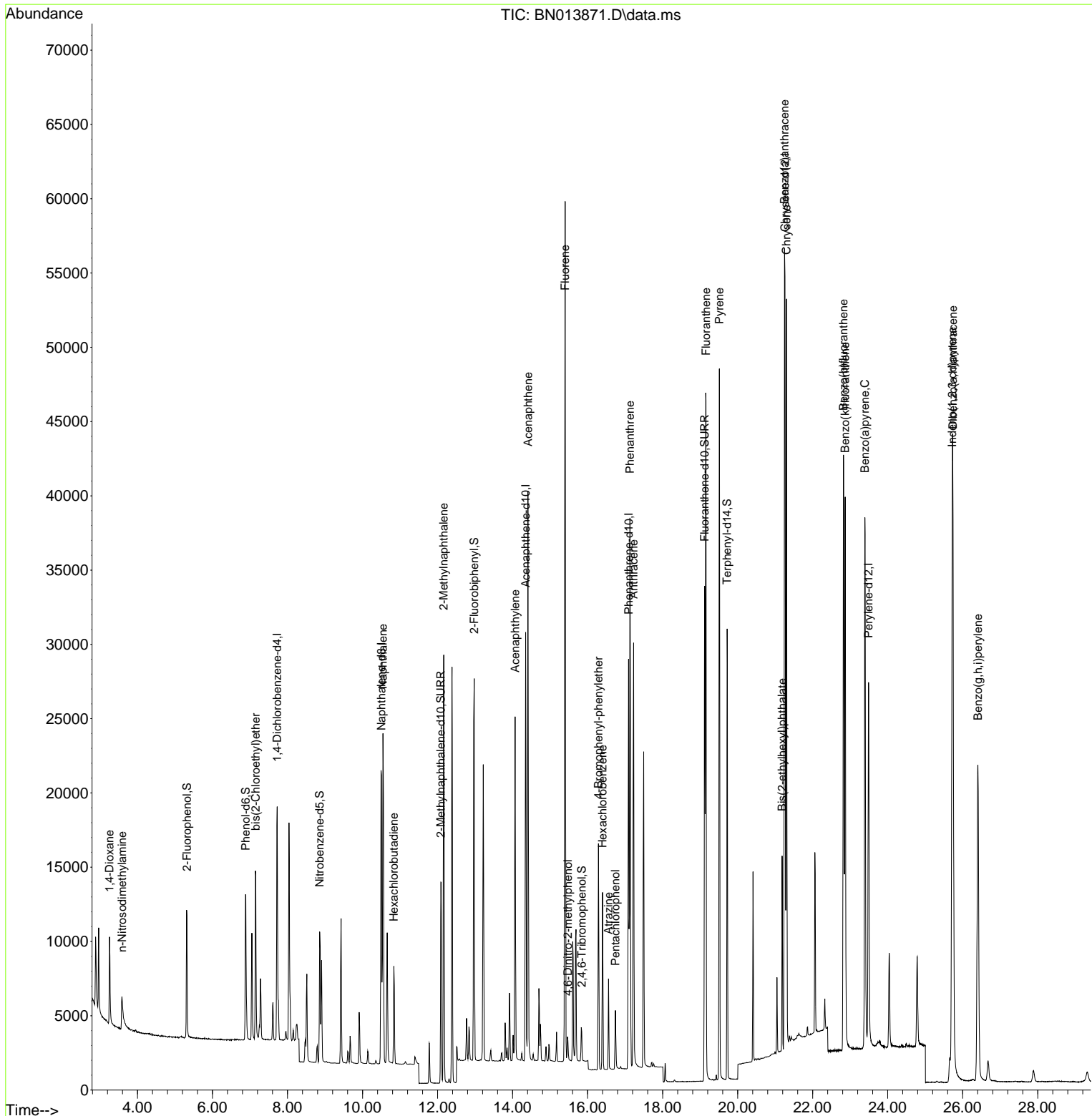
(#) = qualifier out of range (m) = manual integration (+) = signals summed

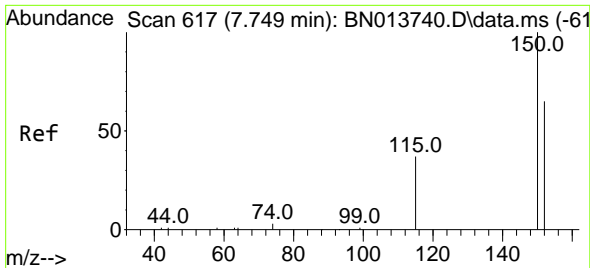
Data Path : Z:\svoasrv\HPCHEM1\BNA_N\Data\BN030821\
 Data File : BN013871.D
 Acq On : 08 Mar 2021 16:00
 Operator : CG/JU
 Sample : PB135037BSD
 Misc :
 ALS Vial : 5 Sample Multiplier: 1

Instrument :
 BNA_N
 Client Sampled :
 PB135037BSD

Manual Integrations
APPROVED
 mohammad
 3/9/2021 12:19:55 PM

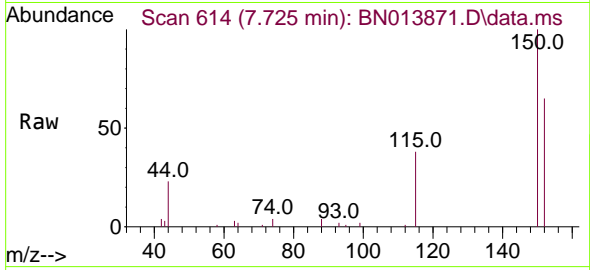
Quant Time: Mar 08 16:36:09 2021
 Quant Method : Z:\SVOASRV\HPCHEM1\BNA_N\METHODS\8270-SIM-BN022421.M
 Quant Title : ASP BNA STANDARDS FOR 5 POINT CALIBRATION
 QLast Update : Mon Mar 08 10:32:13 2021
 Response via : Initial Calibration





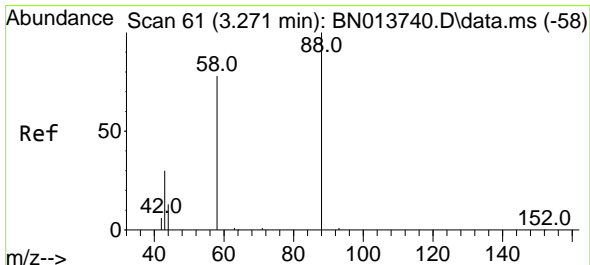
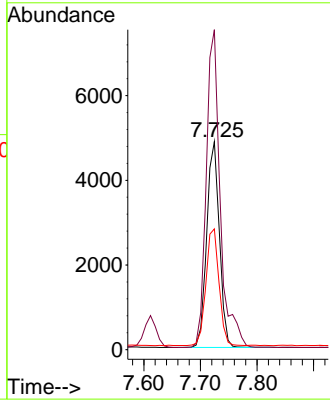
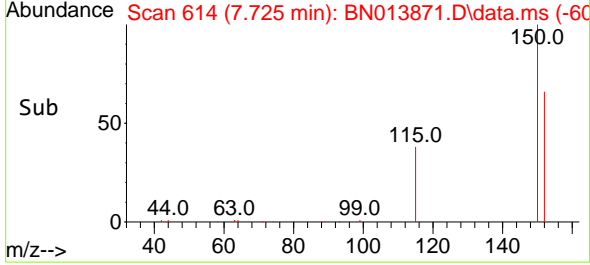
#1
 1,4-Dichlorobenzene-d4
 Concen: 0.40 ng
 RT: 7.725 min Scan# 614
 Delta R.T. 0.001 min
 Lab File: BN013871.D
 Acq: 08 Mar 2021 16:00

Instrument :
 BNA_N
ClientSampled :
 PB135037BSD

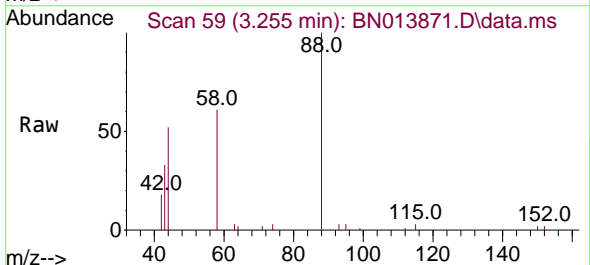


Tgt Ion:152 Resp: 7549
 Ion Ratio Lower Upper
 152 100
 150 153.8 121.8 182.8
 115 58.0 46.6 69.8

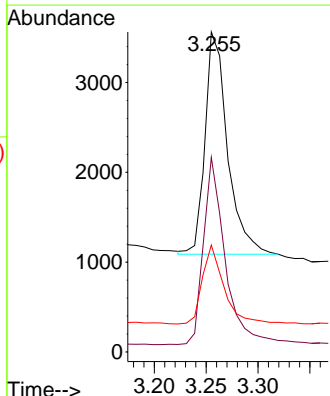
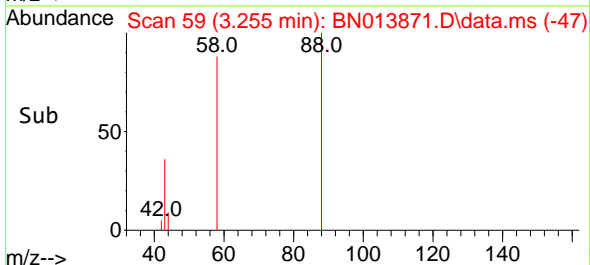
Manual Integrations
APPROVED
 mohammad
 3/9/2021 12:19:55 PM

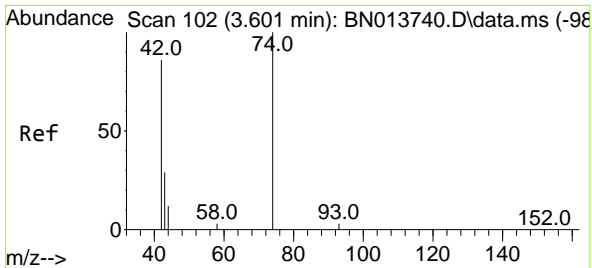


#2
 1,4-Dioxane
 Concen: 0.41 ng
 RT: 3.255 min Scan# 59
 Delta R.T. 0.000 min
 Lab File: BN013871.D
 Acq: 08 Mar 2021 16:00



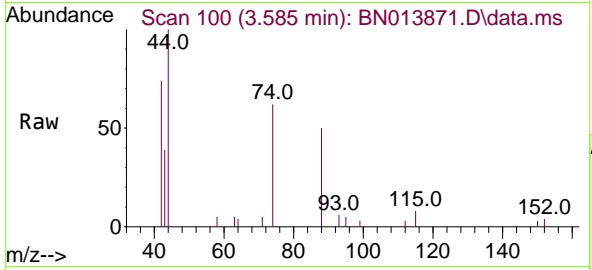
Tgt Ion: 88 Resp: 3724
 Ion Ratio Lower Upper
 88 100
 58 81.4 64.6 96.8
 43 34.0 26.6 40.0





#3
 n-Nitrosodimethylamine
 Concen: 0.38 ng
 RT: 3.585 min Scan# 100
 Delta R.T. 0.008 min
 Lab File: BN013871.D
 Acq: 08 Mar 2021 16:00

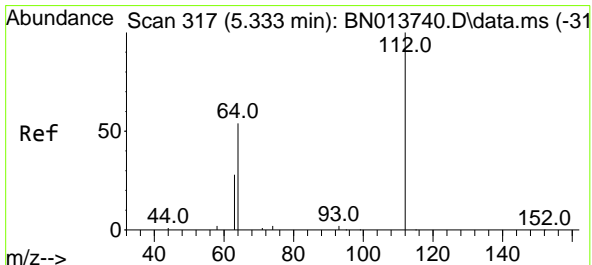
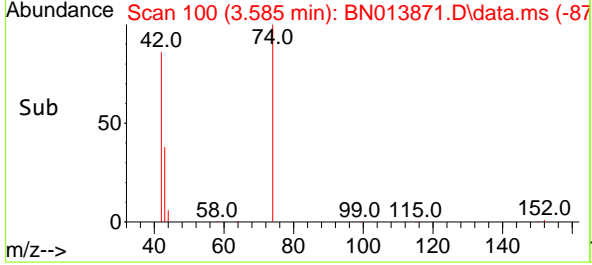
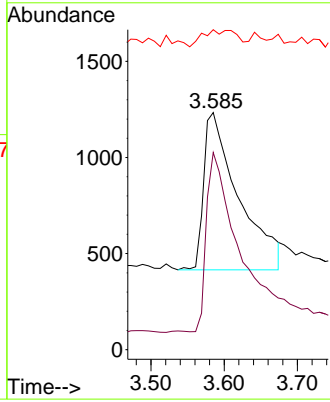
Instrument :
 BNA_N
ClientSampled :
 PB135037BSD



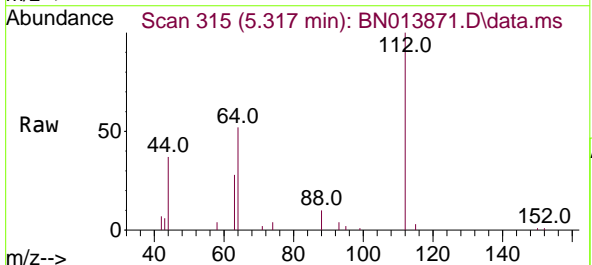
Tgt Ion: 42 Resp: 2708

| Ion | Ratio | Lower | Upper |
|-----|-------|-------|-------|
| 42 | 100 | | |
| 74 | 108.3 | 95.0 | 142.6 |
| 44 | 10.2 | 5.8 | 8.8# |

Manual Integrations
APPROVED
 mohammad
 3/9/2021 12:19:55 PM

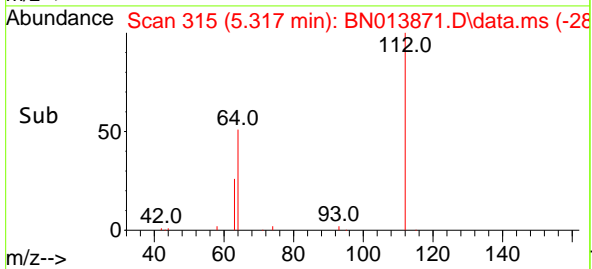
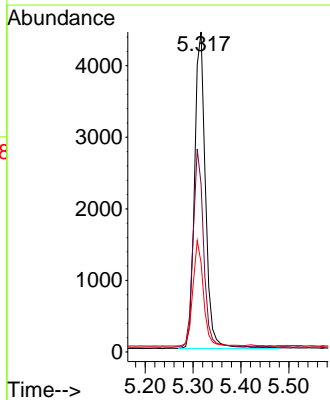


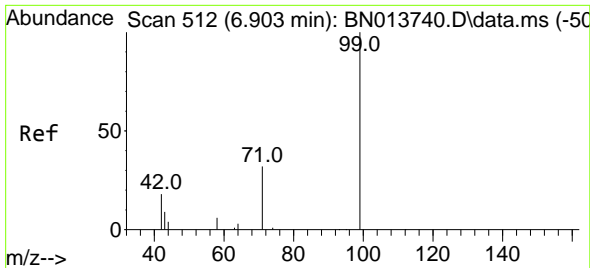
#4
 2-Fluorophenol
 Concen: 0.35 ng
 RT: 5.317 min Scan# 315
 Delta R.T. 0.008 min
 Lab File: BN013871.D
 Acq: 08 Mar 2021 16:00



Tgt Ion: 112 Resp: 7006

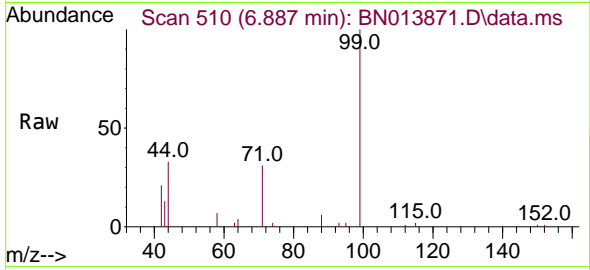
| Ion | Ratio | Lower | Upper |
|-----|-------|-------|-------|
| 112 | 100 | | |
| 64 | 60.8 | 44.3 | 66.5 |
| 63 | 31.9 | 23.0 | 34.6 |





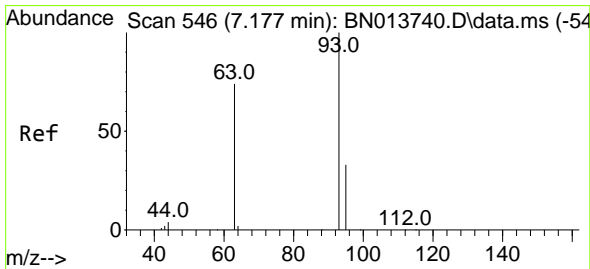
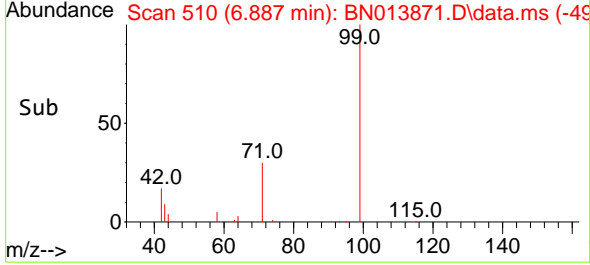
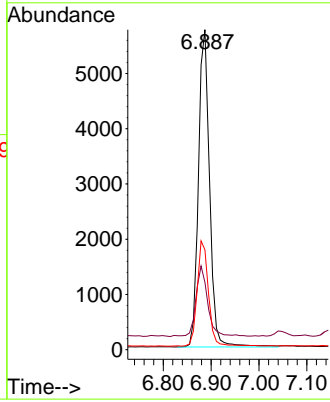
#5
 Phenol-d6
 Concen: 0.35 ng
 RT: 6.887 min Scan# 510
 Delta R.T. 0.008 min
 Lab File: BN013871.D
 Acq: 08 Mar 2021 16:00

Instrument :
 BNA_N
ClientSampled :
 PB135037BSD



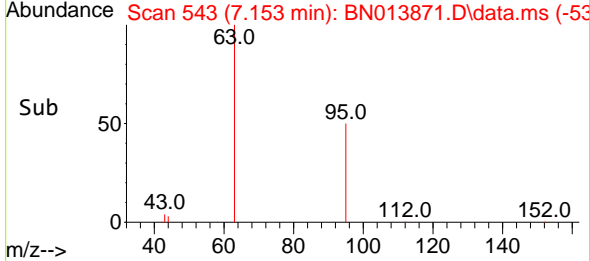
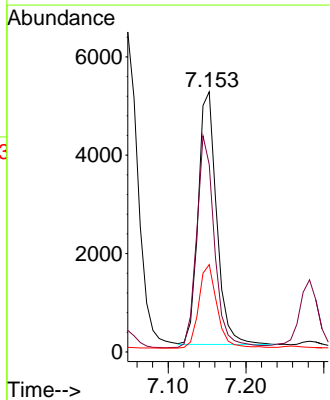
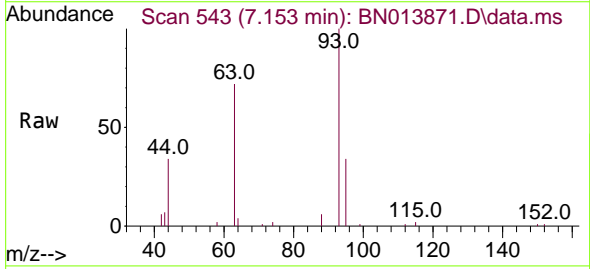
| Tgt Ion | Resp | Lower | Upper |
|---------|------|-------|-------|
| 99 | 9300 | | |
| 99 | 100 | | |
| 42 | 23.8 | 15.2 | 22.8# |
| 71 | 33.5 | 26.1 | 39.1 |

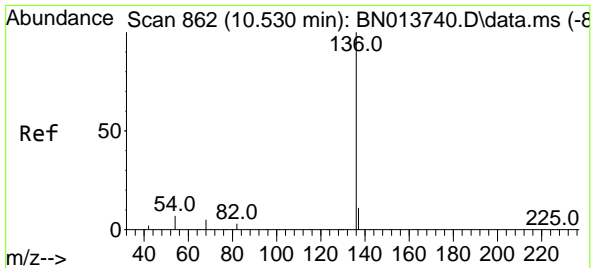
Manual Integrations
APPROVED
 mohammad
 3/9/2021 12:19:55 PM



#6
 bis(2-Chloroethyl)ether
 Concen: 0.44 ng
 RT: 7.153 min Scan# 543
 Delta R.T. 0.008 min
 Lab File: BN013871.D
 Acq: 08 Mar 2021 16:00

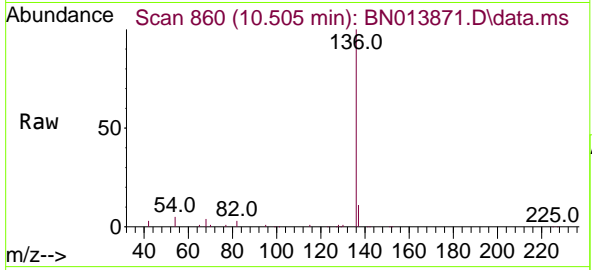
| Tgt Ion | Resp | Lower | Upper |
|---------|------|-------|-------|
| 93 | 8481 | | |
| 93 | 100 | | |
| 63 | 81.7 | 60.8 | 91.2 |
| 95 | 32.9 | 26.0 | 39.0 |





#7
 Naphthalene-d8
 Concen: 0.40 ng
 RT: 10.505 min Scan# 860
 Delta R.T. 0.000 min
 Lab File: BN013871.D
 Acq: 08 Mar 2021 16:00

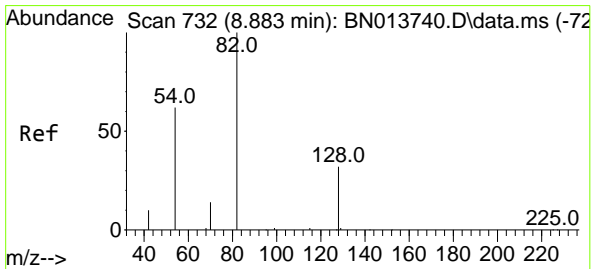
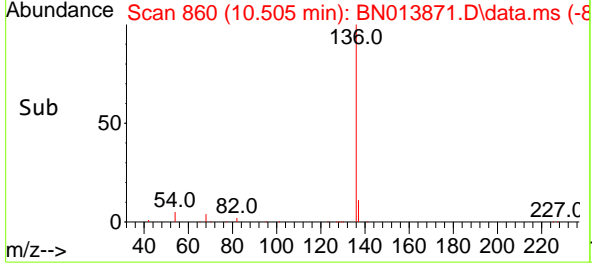
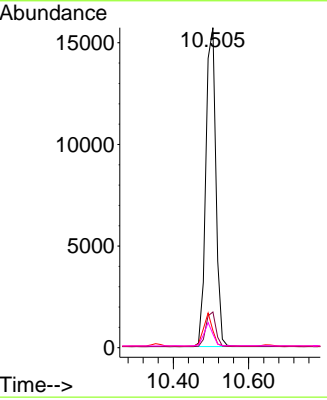
Instrument :
 BNA_N
ClientSampleId :
 PB135037BSD



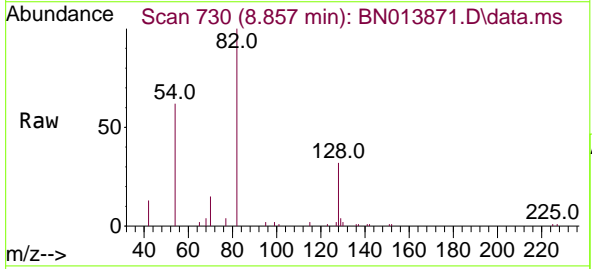
Tgt Ion: 136 Resp: 28934

| Ion | Ratio | Lower | Upper |
|-----|-------|-------|-------|
| 136 | 100 | | |
| 137 | 11.2 | 9.0 | 13.6 |
| 54 | 5.3 | 6.4 | 9.6# |
| 68 | 4.3 | 4.5 | 6.7# |

Manual Integrations
APPROVED
 mohammad
 3/9/2021 12:19:55 PM

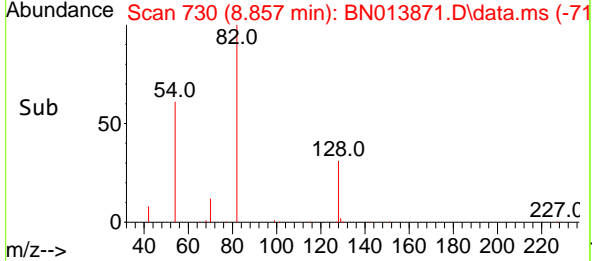
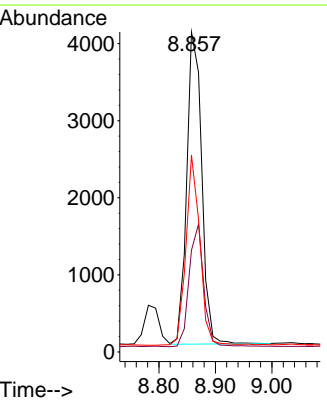


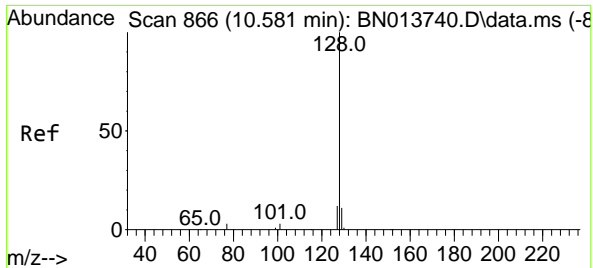
#8
 Nitrobenzene-d5
 Concen: 0.40 ng
 RT: 8.857 min Scan# 730
 Delta R.T. 0.000 min
 Lab File: BN013871.D
 Acq: 08 Mar 2021 16:00



Tgt Ion: 82 Resp: 7483

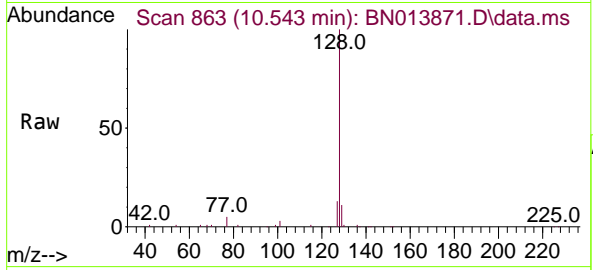
| Ion | Ratio | Lower | Upper |
|-----|-------|-------|-------|
| 82 | 100 | | |
| 128 | 31.8 | 39.2 | 58.8# |
| 54 | 61.5 | 40.1 | 60.1# |





#9
 Naphthalene
 Concen: 0.42 ng
 RT: 10.543 min Scan# 863
 Delta R.T. 0.000 min
 Lab File: BN013871.D
 Acq: 08 Mar 2021 16:00

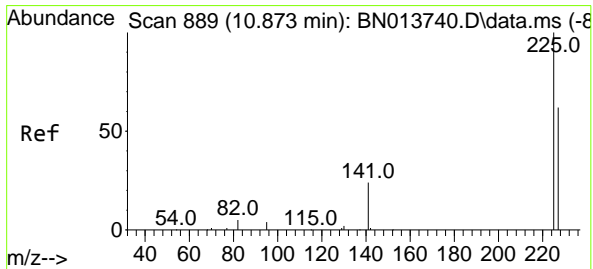
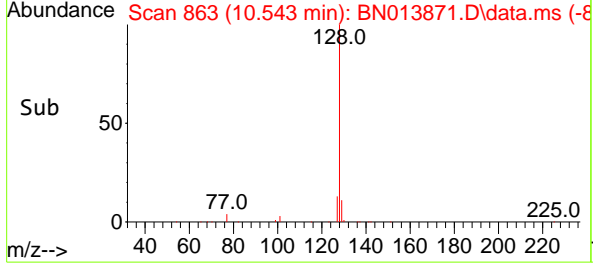
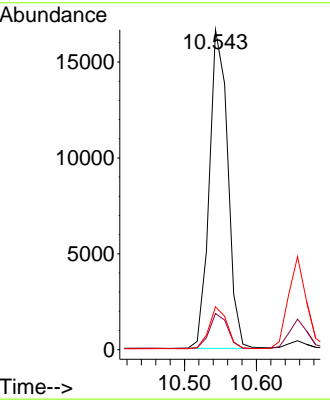
Instrument :
 BNA_N
ClientSampled :
 PB135037BSD



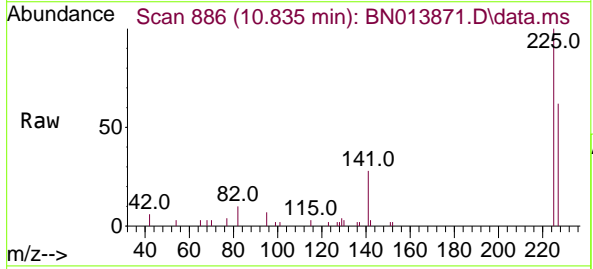
Tgt Ion:128 Resp: 29641

| Ion | Ratio | Lower | Upper |
|-----|-------|-------|-------|
| 128 | 100 | | |
| 129 | 11.3 | 9.0 | 13.4 |
| 127 | 13.4 | 10.4 | 15.6 |

Manual Integrations
APPROVED
 mohammad
 3/9/2021 12:19:55 PM

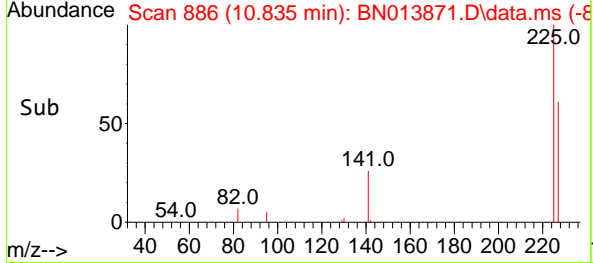
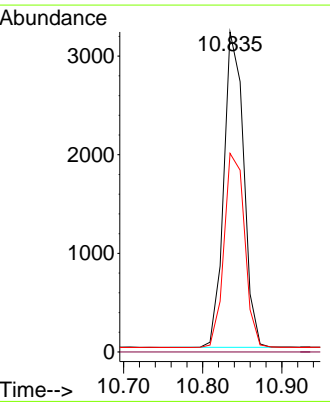


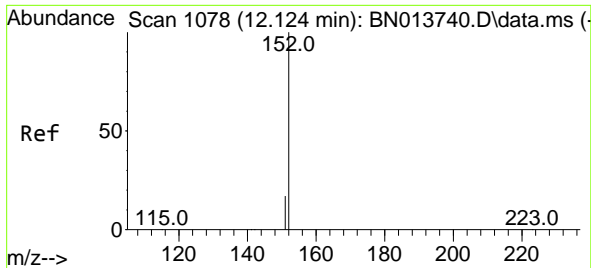
#10
 Hexachlorobutadiene
 Concen: 0.41 ng
 RT: 10.835 min Scan# 886
 Delta R.T. 0.000 min
 Lab File: BN013871.D
 Acq: 08 Mar 2021 16:00



Tgt Ion:225 Resp: 5590

| Ion | Ratio | Lower | Upper |
|-----|-------|-------|-------|
| 225 | 100 | | |
| 223 | 0.0 | 0.0 | 0.0 |
| 227 | 63.6 | 51.2 | 76.8 |



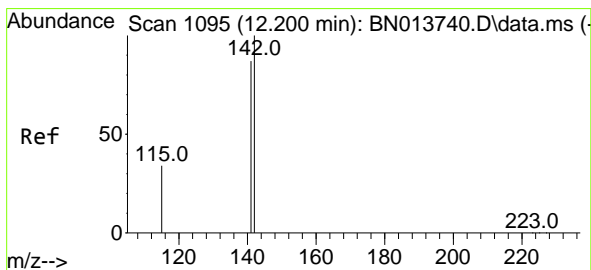
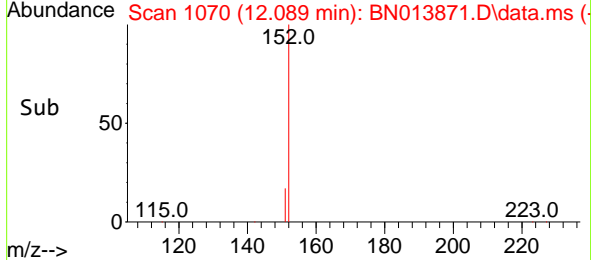
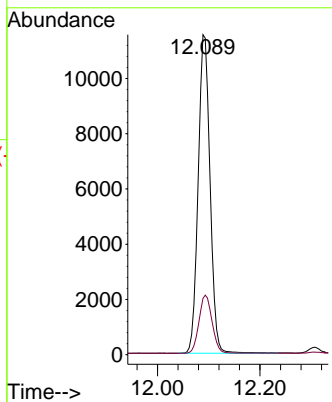
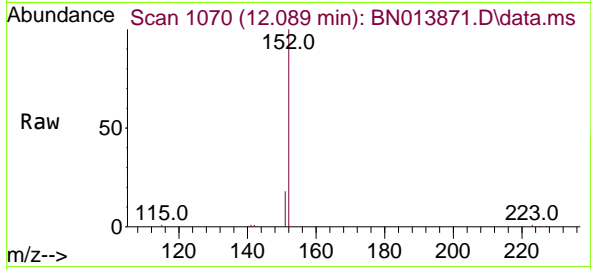


#11
 2-Methylnaphthalene-d10
 Concen: 0.40 ng
 RT: 12.089 min Scan# 1070
 Delta R.T. -0.004 min
 Lab File: BN013871.D
 Acq: 08 Mar 2021 16:00

Instrument :
 BNA_N
ClientSampled :
 PB135037BSD

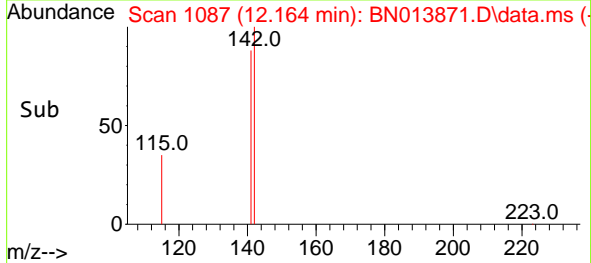
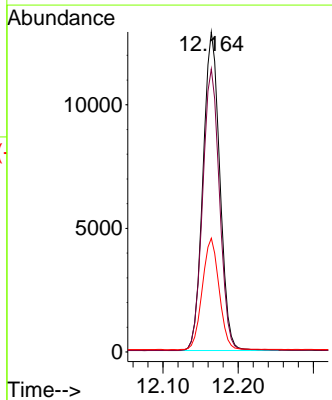
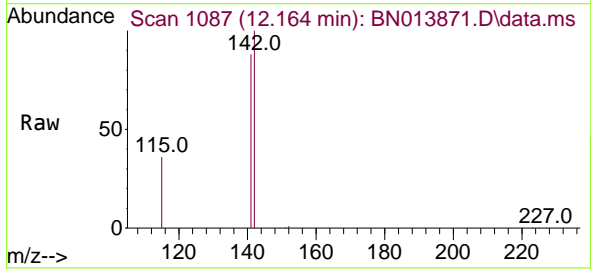
Tgt Ion:152 Resp: 18525
 Ion Ratio Lower Upper
 152 100
 151 20.1 16.2 24.2

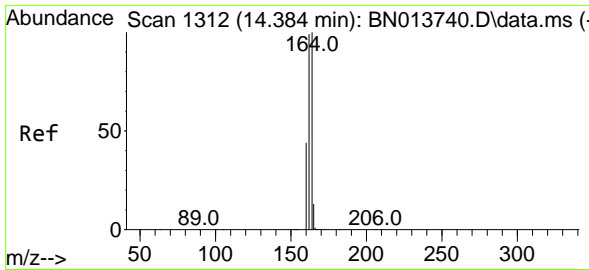
Manual Integrations
APPROVED
 mohammad
 3/9/2021 12:19:55 PM



#12
 2-Methylnaphthalene
 Concen: 0.40 ng
 RT: 12.164 min Scan# 1087
 Delta R.T. 0.000 min
 Lab File: BN013871.D
 Acq: 08 Mar 2021 16:00

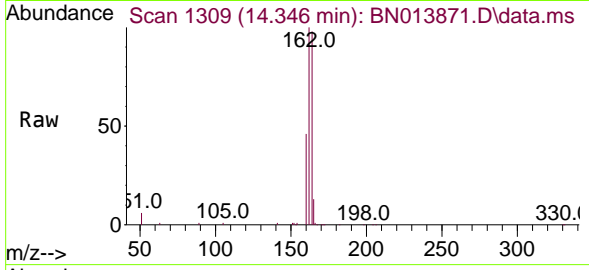
Tgt Ion:142 Resp: 20026
 Ion Ratio Lower Upper
 142 100
 141 88.5 70.5 105.7
 115 35.6 27.4 41.0





#13
 Acenaphthene-d10
 Concen: 0.40 ng
 RT: 14.346 min Scan# 1309
 Delta R.T. 0.000 min
 Lab File: BN013871.D
 Acq: 08 Mar 2021 16:00

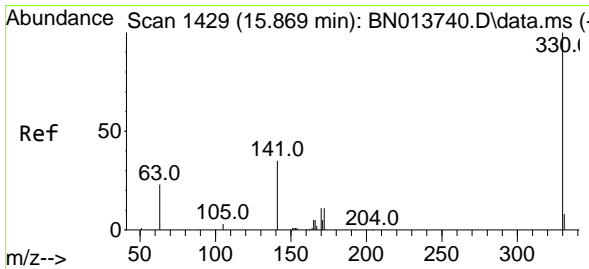
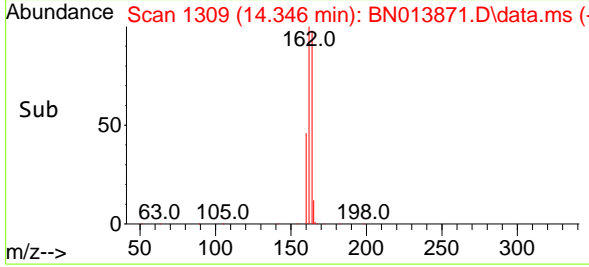
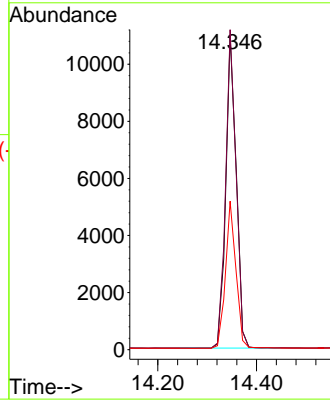
Instrument :
 BNA_N
ClientSampled :
 PB135037BSD



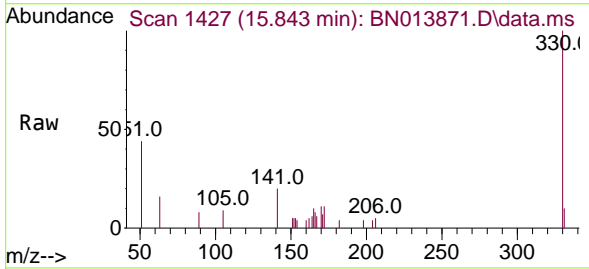
Tgt Ion:164 Resp: 16067

| Ion | Ratio | Lower | Upper |
|-----|-------|-------|-------|
| 164 | 100 | | |
| 162 | 101.7 | 79.6 | 119.4 |
| 160 | 47.2 | 36.0 | 54.0 |

Manual Integrations
APPROVED
 mohammad
 3/9/2021 12:19:55 PM

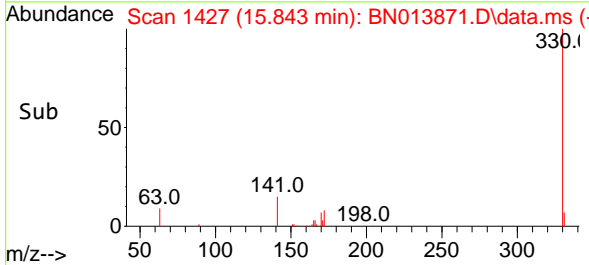
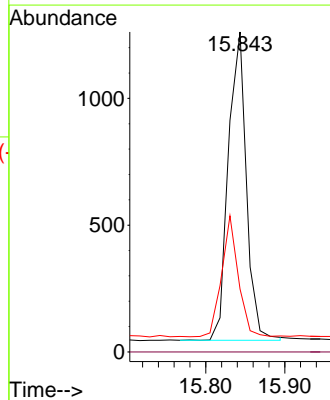


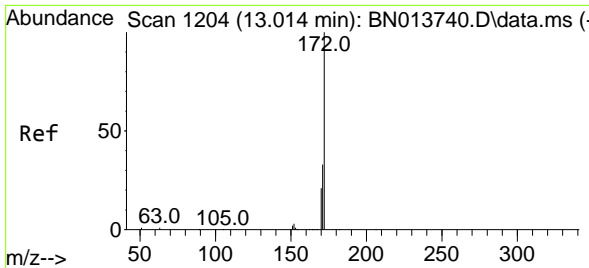
#14
 2,4,6-Tribromophenol
 Concen: 0.29 ng
 RT: 15.843 min Scan# 1427
 Delta R.T. 0.000 min
 Lab File: BN013871.D
 Acq: 08 Mar 2021 16:00



Tgt Ion:330 Resp: 1925

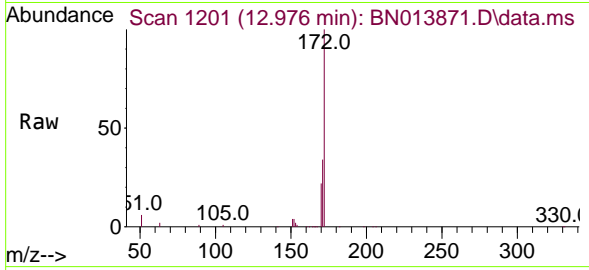
| Ion | Ratio | Lower | Upper |
|-----|-------|-------|-------|
| 330 | 100 | | |
| 332 | 0.0 | 0.0 | 0.0 |
| 141 | 36.3 | 26.8 | 40.2 |





#15
 2-Fluorobiphenyl
 Concen: 0.44 ng
 RT: 12.976 min Scan# 1201
 Delta R.T. 0.000 min
 Lab File: BN013871.D
 Acq: 08 Mar 2021 16:00

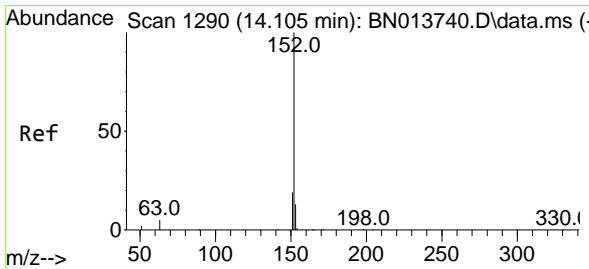
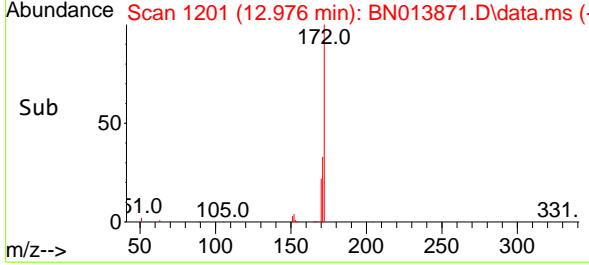
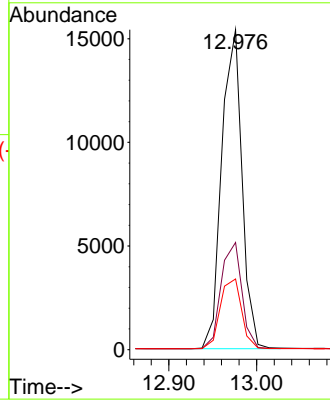
Instrument :
 BNA_N
ClientSampled :
 PB135037BSD



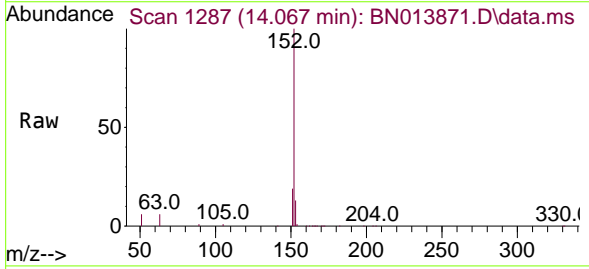
Tgt Ion:172 Resp: 24712

| Ion | Ratio | Lower | Upper |
|-----|-------|-------|-------|
| 172 | 100 | | |
| 171 | 33.5 | 28.6 | 42.8 |
| 170 | 22.1 | 18.9 | 28.3 |

Manual Integrations
APPROVED
 mohammad
 3/9/2021 12:19:55 PM

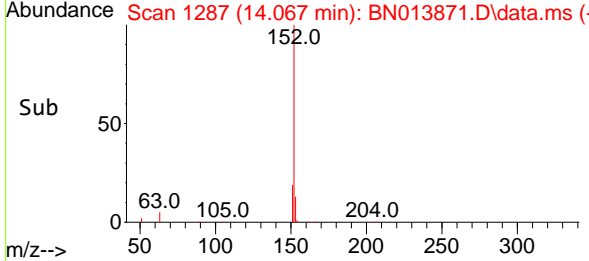
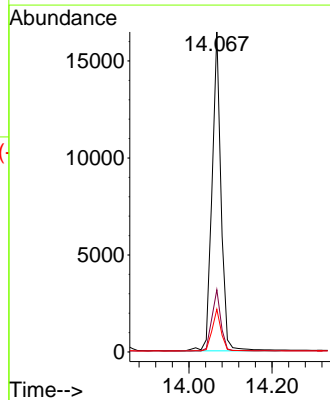


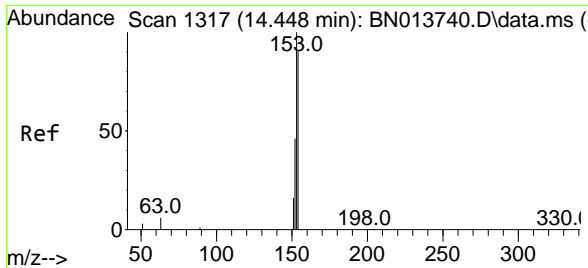
#16
 Acenaphthylene
 Concen: 0.34 ng
 RT: 14.067 min Scan# 1287
 Delta R.T. 0.000 min
 Lab File: BN013871.D
 Acq: 08 Mar 2021 16:00



Tgt Ion:152 Resp: 24598

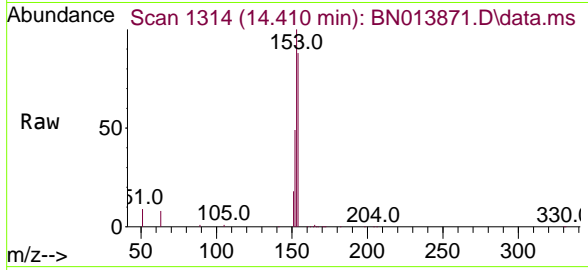
| Ion | Ratio | Lower | Upper |
|-----|-------|-------|-------|
| 152 | 100 | | |
| 151 | 19.2 | 15.7 | 23.5 |
| 153 | 13.2 | 10.5 | 15.7 |





#17
 Acenaphthene
 Concen: 0.41 ng
 RT: 14.410 min Scan# 1314
 Delta R.T. 0.000 min
 Lab File: BN013871.D
 Acq: 08 Mar 2021 16:00

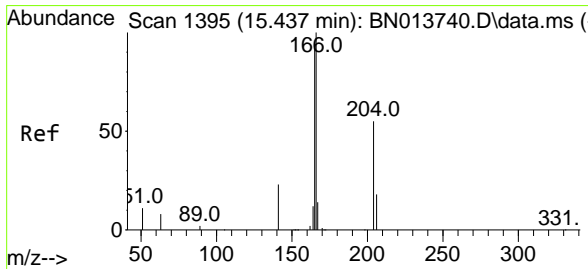
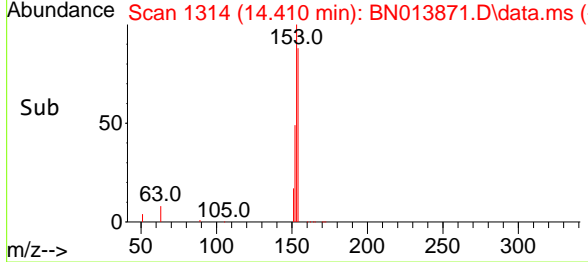
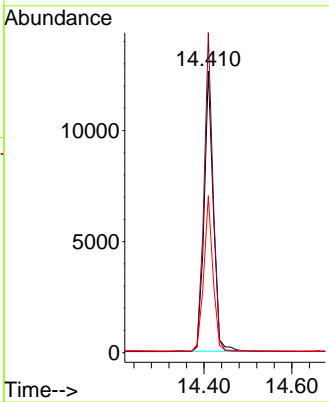
Instrument :
 BNA_N
 ClientSampleId :
 PB135037BSD



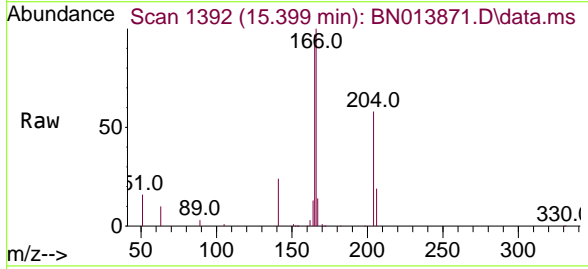
Tgt Ion:154 Resp: 18258

| Ion | Ratio | Lower | Upper |
|-----|-------|-------|-------|
| 154 | 100 | | |
| 153 | 111.1 | 88.4 | 132.6 |
| 152 | 54.8 | 43.0 | 64.4 |

Manual Integrations
 APPROVED
 mohammad
 3/9/2021 12:19:55 PM

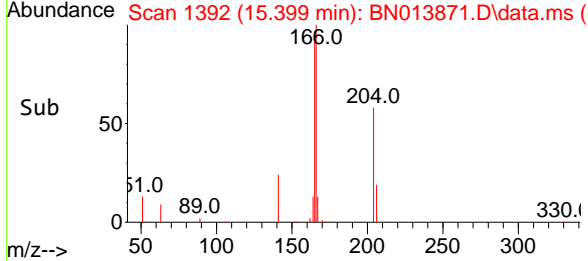
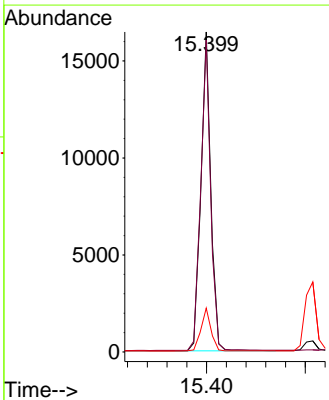


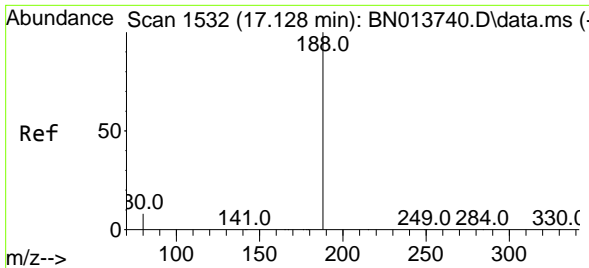
#18
 Fluorene
 Concen: 0.40 ng
 RT: 15.399 min Scan# 1392
 Delta R.T. 0.000 min
 Lab File: BN013871.D
 Acq: 08 Mar 2021 16:00



Tgt Ion:166 Resp: 22863

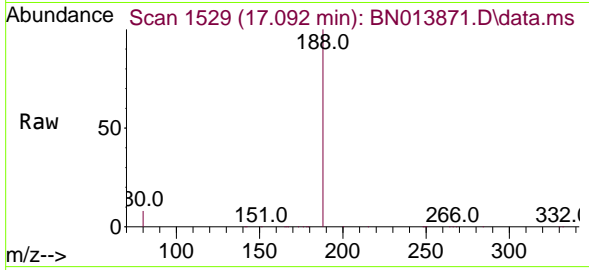
| Ion | Ratio | Lower | Upper |
|-----|-------|-------|-------|
| 166 | 100 | | |
| 165 | 97.9 | 77.8 | 116.8 |
| 167 | 13.6 | 10.6 | 16.0 |





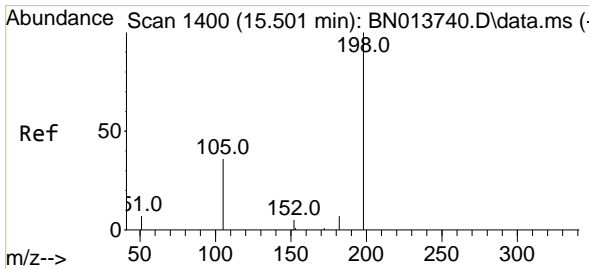
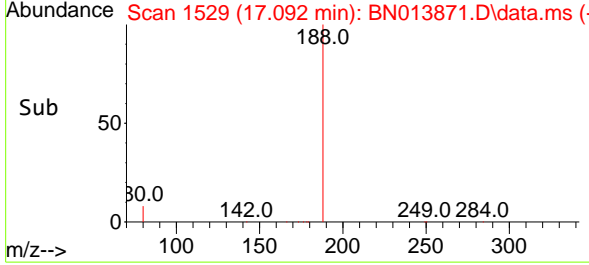
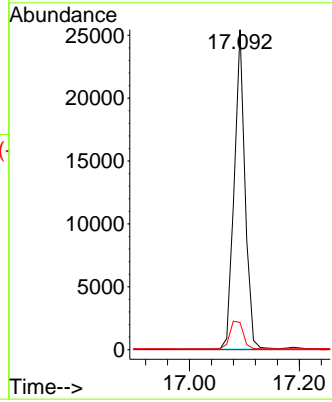
#19
 Phenanthrene-d10
 Concen: 0.40 ng
 RT: 17.092 min Scan# 1529
 Delta R.T. 0.001 min
 Lab File: BN013871.D
 Acq: 08 Mar 2021 16:00

Instrument :
 BNA_N
ClientSampled :
 PB135037BSD

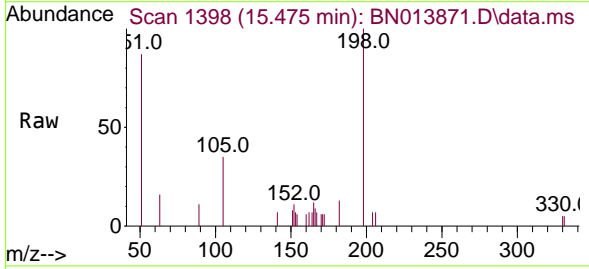


Tgt Ion:188 Resp: 34537
 Ion Ratio Lower Upper
 188 100
 94 0.0 0.0 0.0
 80 8.5 9.0 13.6#

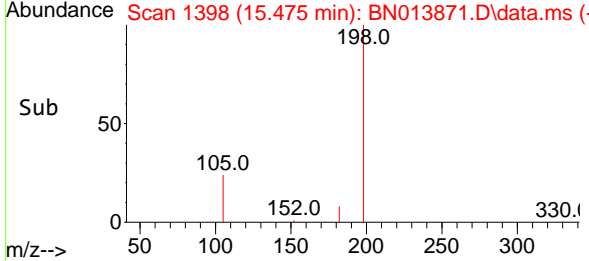
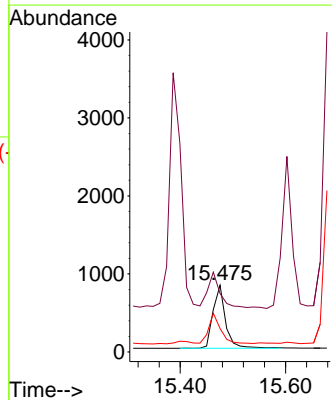
Manual Integrations
APPROVED
 mohammad
 3/9/2021 12:19:55 PM

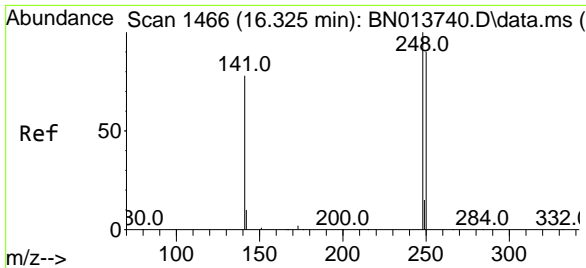


#20
 4,6-Dinitro-2-methylphenol
 Concen: 0.56 ng
 RT: 15.475 min Scan# 1398
 Delta R.T. 0.000 min
 Lab File: BN013871.D
 Acq: 08 Mar 2021 16:00



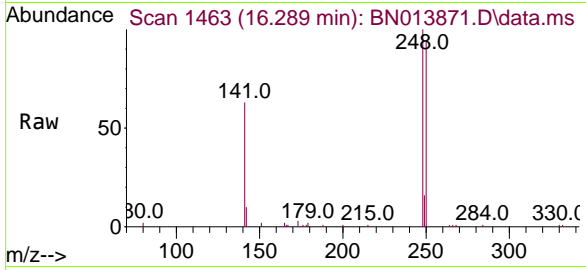
Tgt Ion:198 Resp: 1333
 Ion Ratio Lower Upper
 198 100
 51 87.4 61.7 92.5
 105 35.2 33.0 49.6





#21
 4-Bromophenyl-phenylether
 Concen: 0.39 ng
 RT: 16.289 min Scan# 1463
 Delta R.T. 0.001 min
 Lab File: BN013871.D
 Acq: 08 Mar 2021 16:00

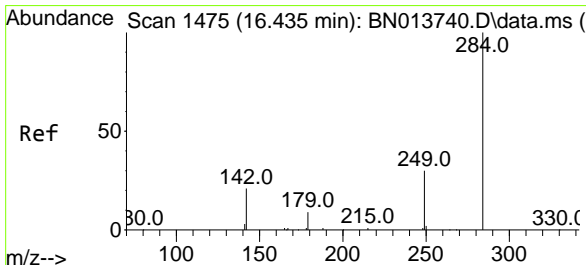
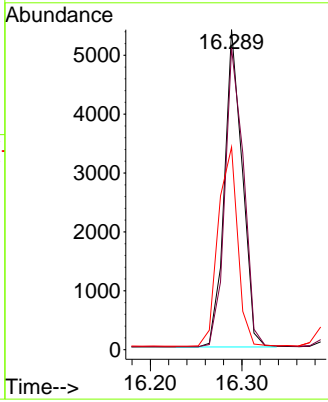
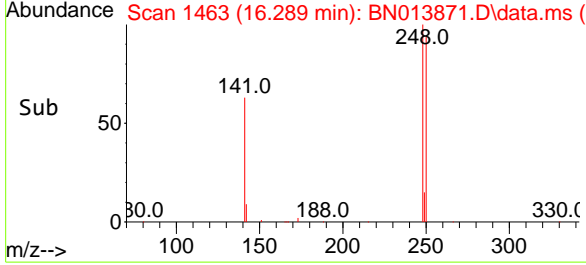
Instrument :
 BNA_N
ClientSampled :
 PB135037BSD



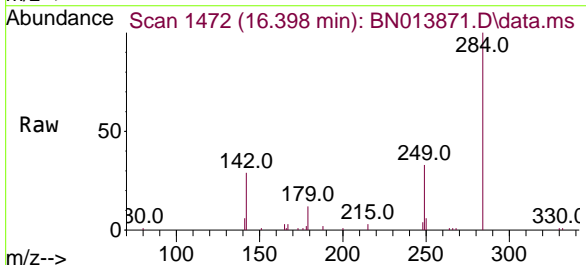
Tgt Ion: 248 Resp: 7315

| Ion | Ratio | Lower | Upper |
|-----|-------|-------|-------|
| 248 | 100 | | |
| 250 | 94.3 | 75.5 | 113.3 |
| 141 | 63.3 | 53.8 | 80.8 |

Manual Integrations
APPROVED
 mohammad
 3/9/2021 12:19:55 PM

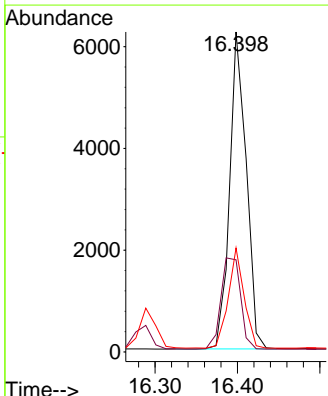
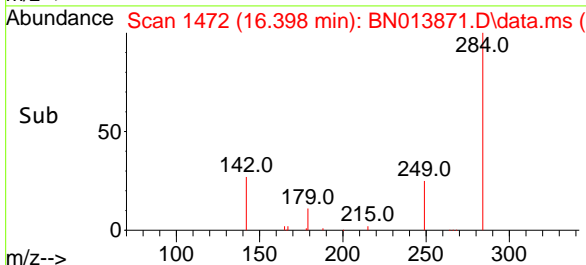


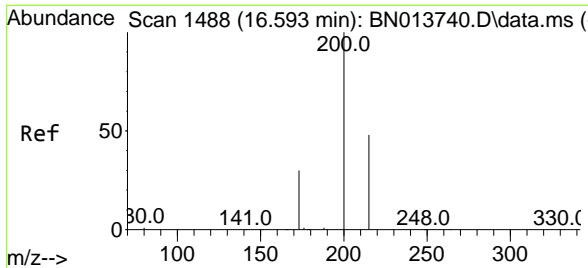
#22
 Hexachlorobenzene
 Concen: 0.44 ng
 RT: 16.398 min Scan# 1472
 Delta R.T. 0.001 min
 Lab File: BN013871.D
 Acq: 08 Mar 2021 16:00



Tgt Ion: 284 Resp: 8728

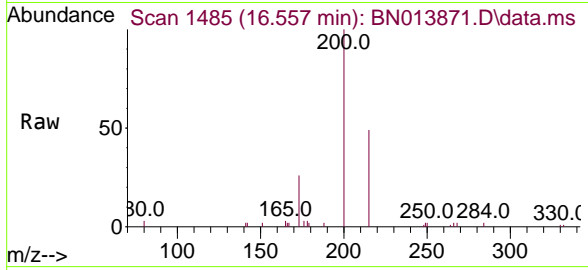
| Ion | Ratio | Lower | Upper |
|-----|-------|-------|-------|
| 284 | 100 | | |
| 142 | 34.1 | 27.9 | 41.9 |
| 249 | 30.1 | 24.2 | 36.2 |





#23
 Atrazine
 Concen: 0.25 ng
 RT: 16.557 min Scan# 1485
 Delta R.T. 0.001 min
 Lab File: BN013871.D
 Acq: 08 Mar 2021 16:00

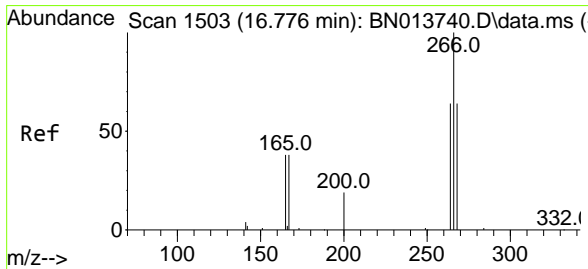
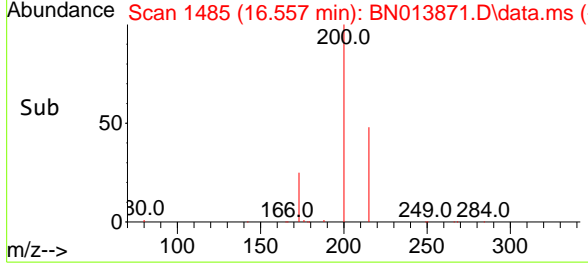
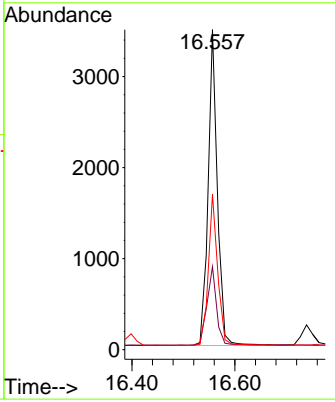
Instrument :
 BNA_N
ClientSampled :
 PB135037BSD



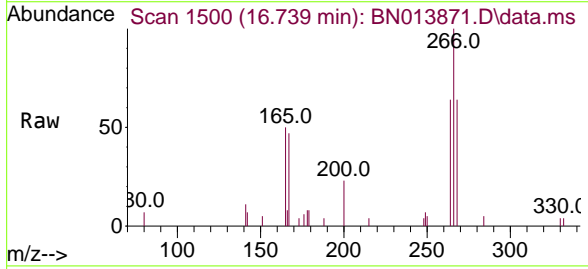
Tgt Ion: 200 Resp: 4345

| Ion | Ratio | Lower | Upper |
|-----|-------|-------|-------|
| 200 | 100 | | |
| 173 | 26.0 | 18.6 | 28.0 |
| 215 | 48.6 | 41.0 | 61.6 |

Manual Integrations
APPROVED
 mohammad
 3/9/2021 12:19:55 PM

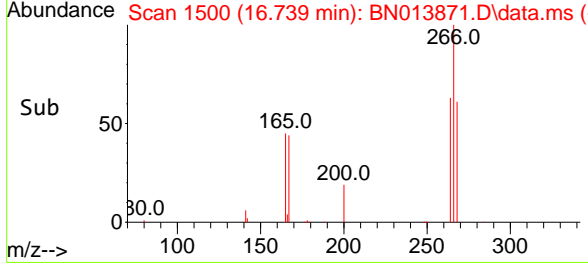
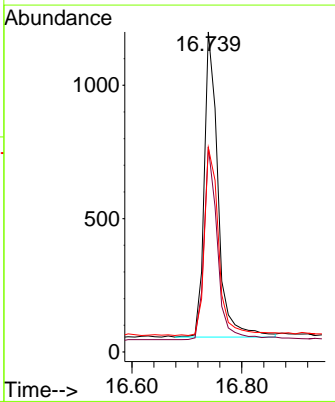


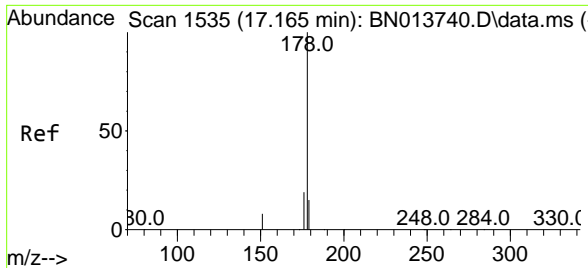
#24
 Pentachlorophenol
 Concen: 0.31 ng
 RT: 16.739 min Scan# 1500
 Delta R.T. 0.001 min
 Lab File: BN013871.D
 Acq: 08 Mar 2021 16:00



Tgt Ion: 266 Resp: 1985

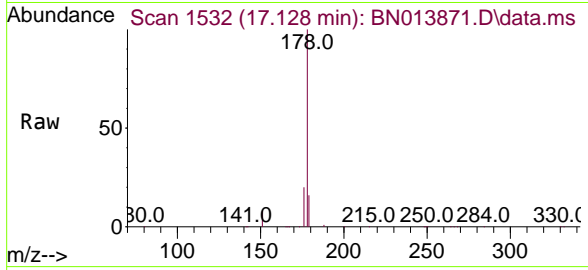
| Ion | Ratio | Lower | Upper |
|-----|-------|-------|-------|
| 266 | 100 | | |
| 264 | 62.5 | 51.6 | 77.4 |
| 268 | 64.8 | 54.6 | 82.0 |





#25
 Phenanthrene
 Concen: 0.42 ng
 RT: 17.128 min Scan# 1532
 Delta R.T. 0.001 min
 Lab File: BN013871.D
 Acq: 08 Mar 2021 16:00

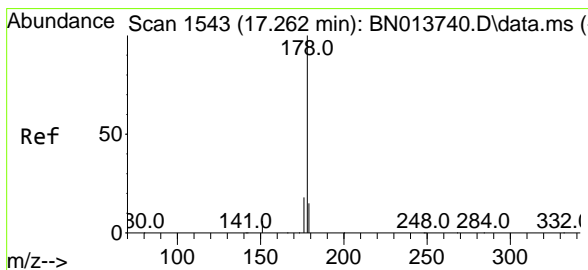
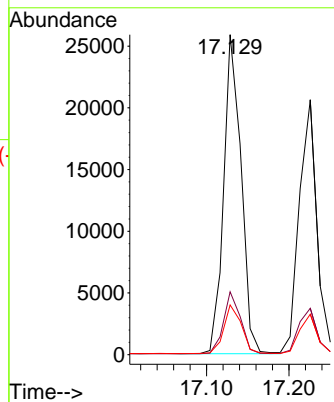
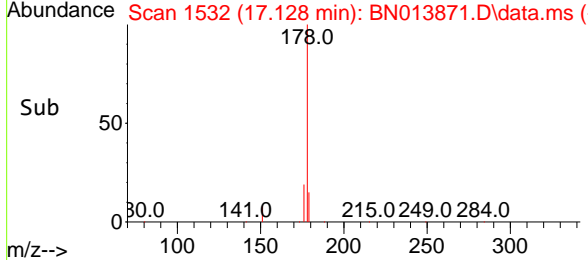
Instrument :
 BNA_N
ClientSampled :
 PB135037BSD



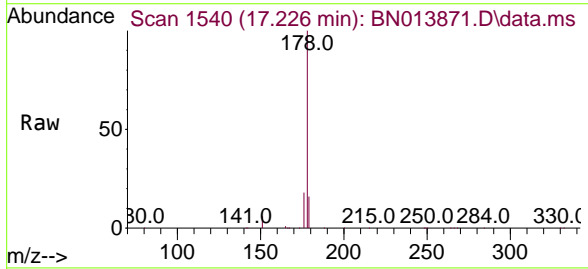
Tgt Ion:178 Resp: 38017

| Ion | Ratio | Lower | Upper |
|-----|-------|-------|-------|
| 178 | 100 | | |
| 176 | 18.9 | 15.0 | 22.4 |
| 179 | 15.6 | 12.3 | 18.5 |

Manual Integrations
APPROVED
 mohammad
 3/9/2021 12:19:55 PM

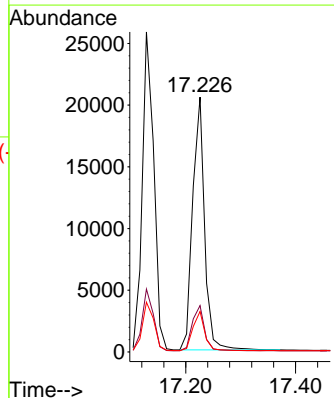
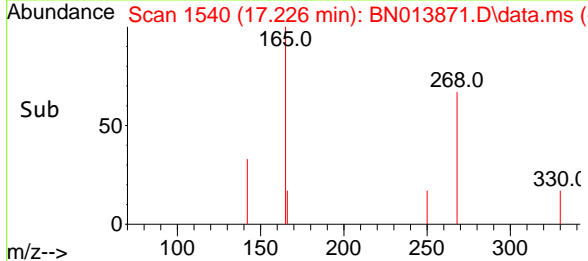


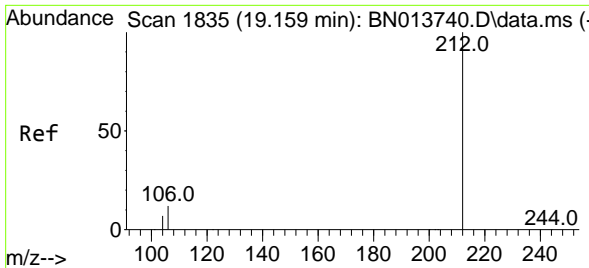
#26
 Anthracene
 Concen: 0.35 ng
 RT: 17.226 min Scan# 1540
 Delta R.T. 0.001 min
 Lab File: BN013871.D
 Acq: 08 Mar 2021 16:00



Tgt Ion:178 Resp: 31026

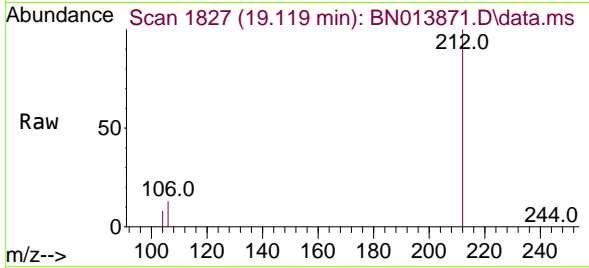
| Ion | Ratio | Lower | Upper |
|-----|-------|-------|-------|
| 178 | 100 | | |
| 176 | 18.5 | 14.6 | 21.8 |
| 179 | 15.3 | 12.2 | 18.2 |





#27
 Fluoranthene-d10
 Concen: 0.38 ng
 RT: 19.119 min Scan# 1827
 Delta R.T. -0.002 min
 Lab File: BN013871.D
 Acq: 08 Mar 2021 16:00

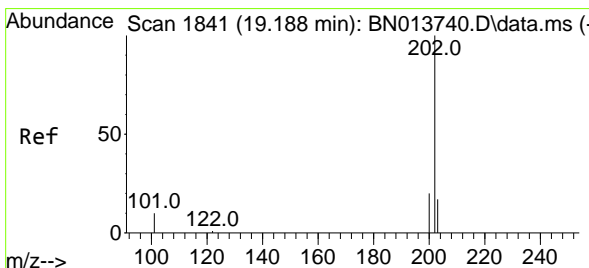
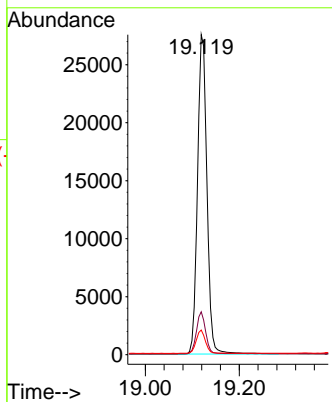
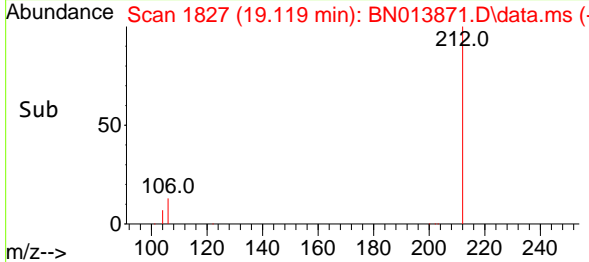
Instrument :
 BNA_N
 ClientSampleId :
 PB135037BSD



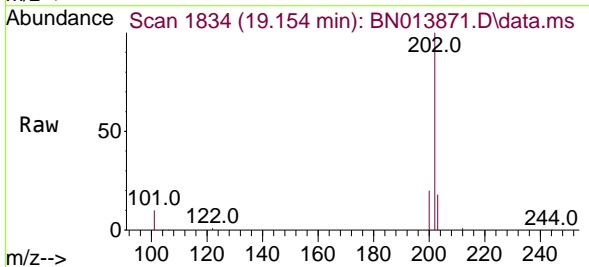
Tgt Ion:212 Resp: 38364
 Ion Ratio Lower Upper
 212 100
 106 12.6 9.7 14.5
 104 7.1 5.5 8.3

Manual Integrations
 APPROVED

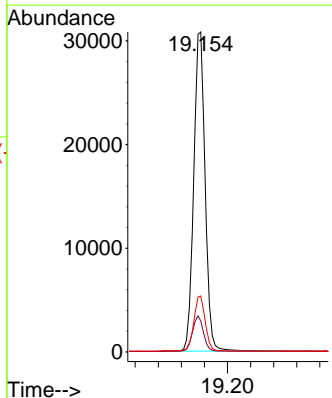
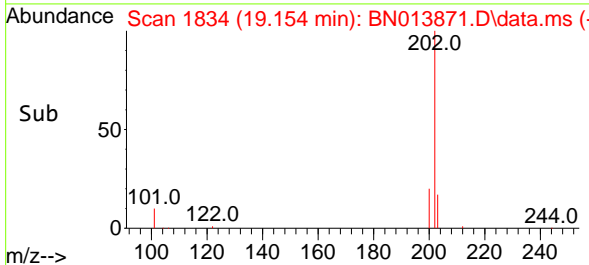
mohammad
 3/9/2021 12:19:55 PM

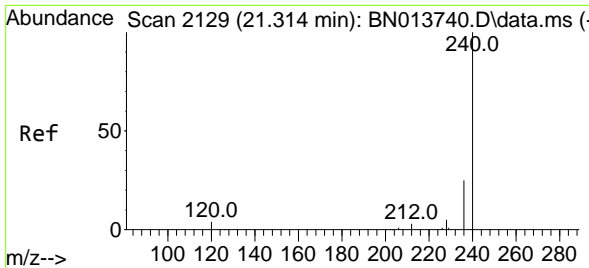


#28
 Fluoranthene
 Concen: 0.39 ng
 RT: 19.154 min Scan# 1834
 Delta R.T. 0.003 min
 Lab File: BN013871.D
 Acq: 08 Mar 2021 16:00



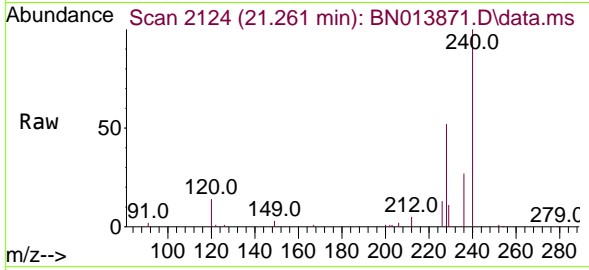
Tgt Ion:202 Resp: 42361
 Ion Ratio Lower Upper
 202 100
 101 10.9 8.1 12.1
 203 17.2 13.9 20.9





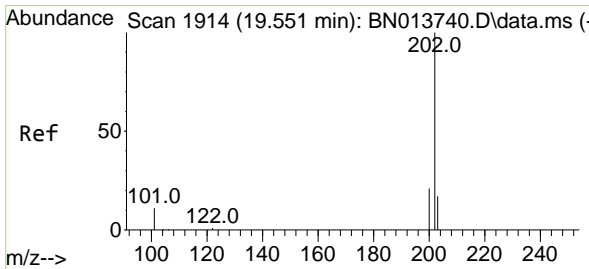
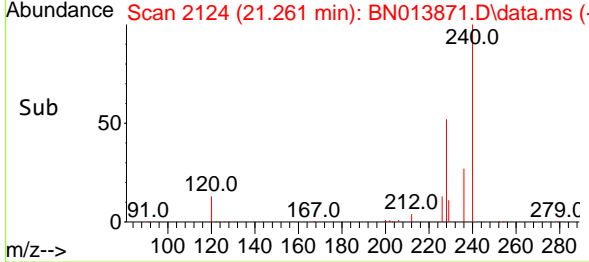
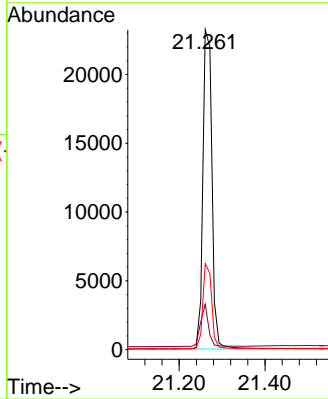
#29
 Chrysene-d12
 Concen: 0.40 ng
 RT: 21.261 min Scan# 2124
 Delta R.T. -0.008 min
 Lab File: BN013871.D
 Acq: 08 Mar 2021 16:00

Instrument :
 BNA_N
ClientSampleId :
 PB135037BSD

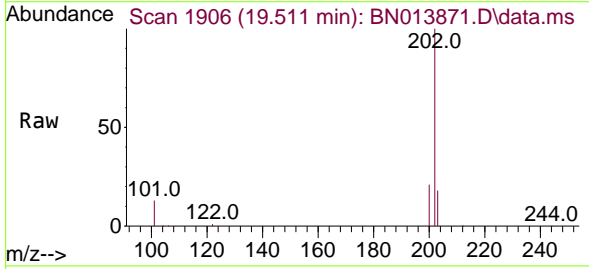


Tgt Ion:240 Resp: 34203
 Ion Ratio Lower Upper
 240 100
 120 14.2 10.2 15.4
 236 26.9 21.3 31.9

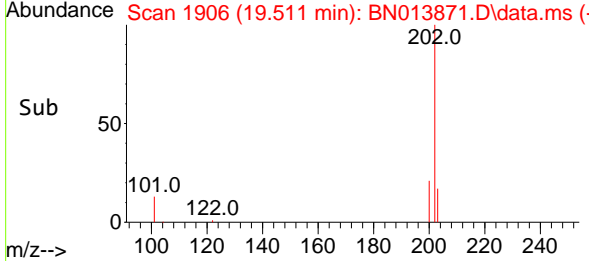
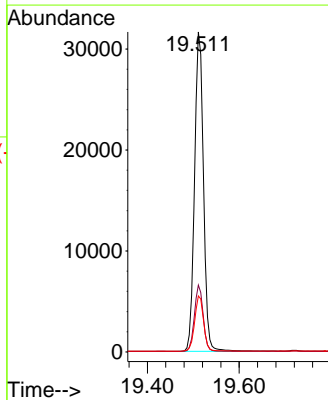
Manual Integrations
APPROVED
 mohammad
 3/9/2021 12:19:55 PM

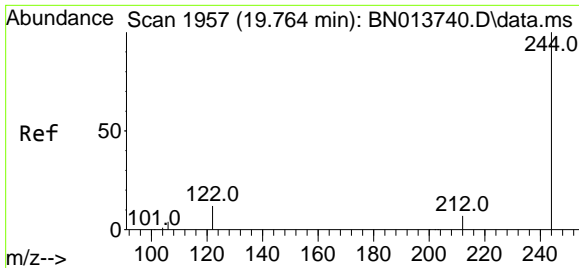


#30
 Pyrene
 Concen: 0.41 ng
 RT: 19.511 min Scan# 1906
 Delta R.T. -0.002 min
 Lab File: BN013871.D
 Acq: 08 Mar 2021 16:00



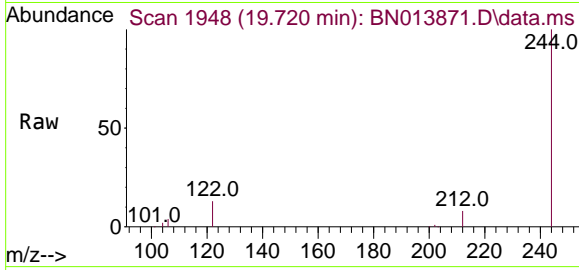
Tgt Ion:202 Resp: 42754
 Ion Ratio Lower Upper
 202 100
 200 20.5 16.3 24.5
 203 17.4 14.0 21.0





#31
 Terphenyl-d14
 Concen: 0.40 ng
 RT: 19.720 min Scan# 1948
 Delta R.T. -0.002 min
 Lab File: BN013871.D
 Acq: 08 Mar 2021 16:00

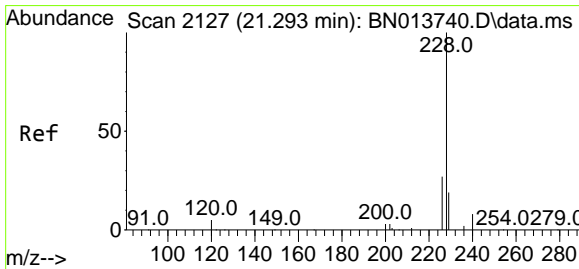
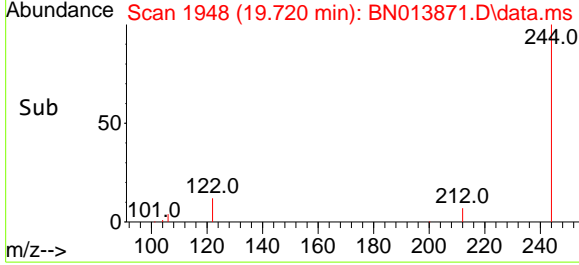
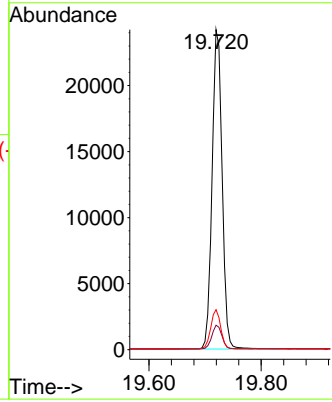
Instrument :
 BNA_N
ClientSampled :
 PB135037BSD



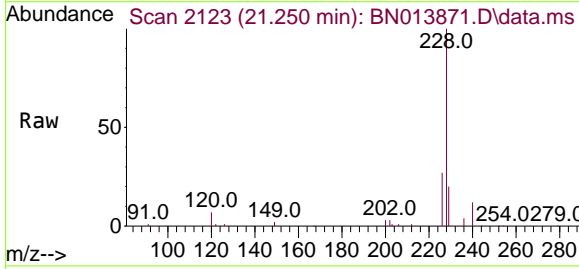
Tgt Ion:244 Resp: 30027

| Ion | Ratio | Lower | Upper |
|-----|-------|-------|-------|
| 244 | 100 | | |
| 212 | 7.7 | 6.1 | 9.1 |
| 122 | 12.5 | 9.8 | 14.8 |

Manual Integrations
APPROVED
 mohammad
 3/9/2021 12:19:55 PM

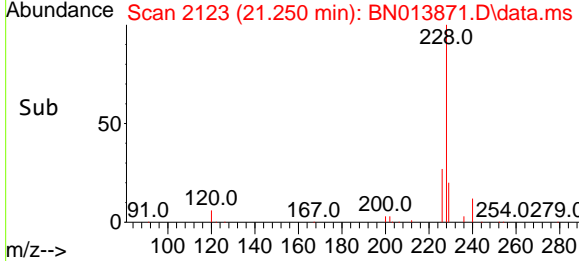
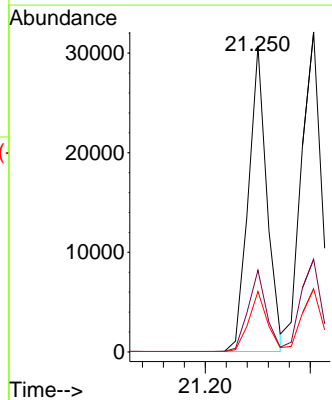


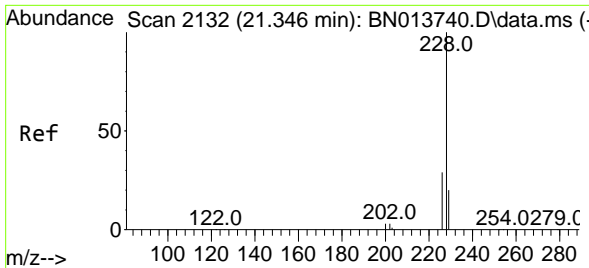
#32
 Benzo(a)anthracene
 Concen: 0.36 ng
 RT: 21.250 min Scan# 2123
 Delta R.T. 0.003 min
 Lab File: BN013871.D
 Acq: 08 Mar 2021 16:00



Tgt Ion:228 Resp: 37585

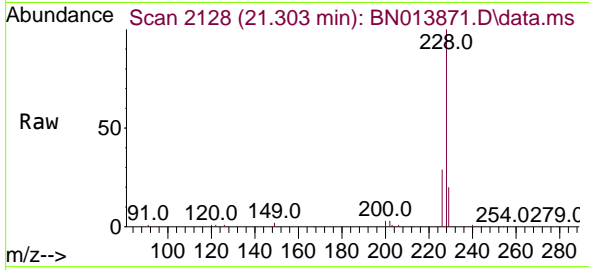
| Ion | Ratio | Lower | Upper |
|-----|-------|-------|-------|
| 228 | 100 | | |
| 226 | 26.7 | 20.5 | 30.7 |
| 229 | 19.8 | 16.2 | 24.4 |





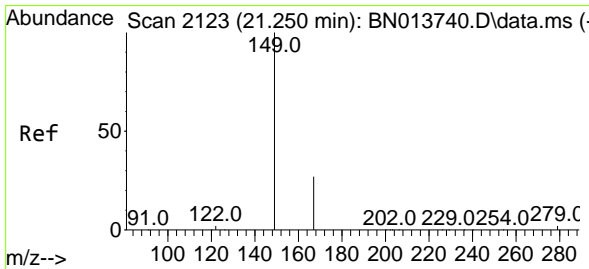
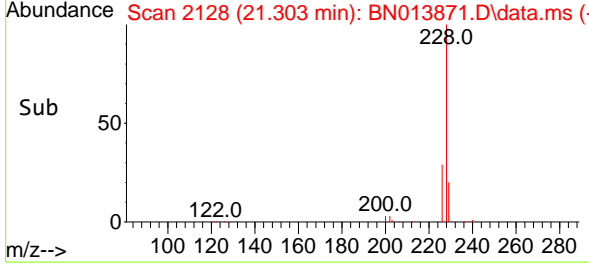
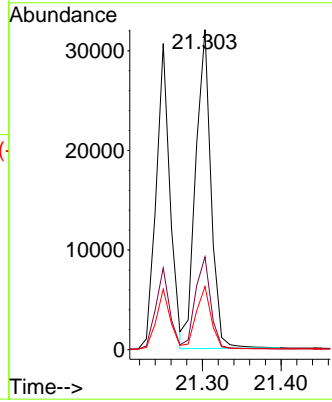
#33
 Chrysene
 Concen: 0.42 ng
 RT: 21.303 min Scan# 2128
 Delta R.T. 0.003 min
 Lab File: BN013871.D
 Acq: 08 Mar 2021 16:00

Instrument :
 BNA_N
ClientSampled :
 PB135037BSD

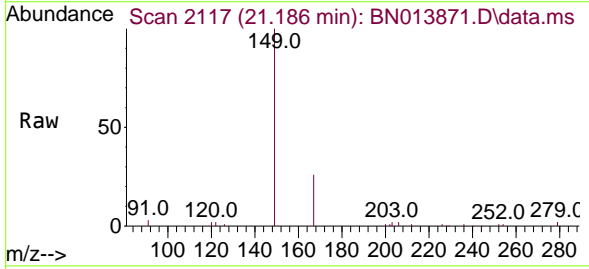


Tgt Ion:228 Resp: 43123
 Ion Ratio Lower Upper
 228 100
 226 29.0 24.3 36.5
 229 19.8 15.1 22.7

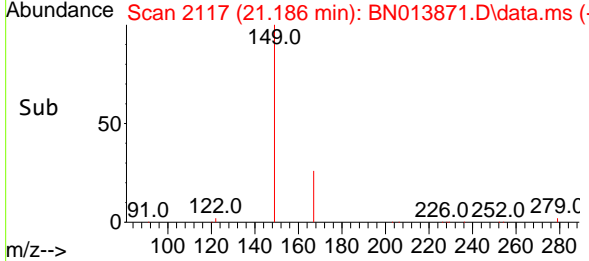
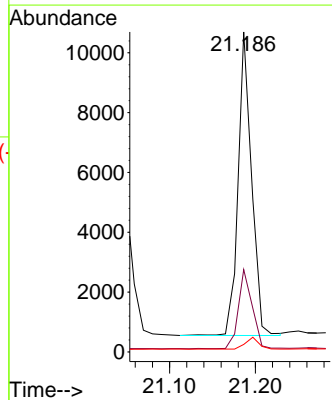
Manual Integrations
APPROVED
 mohammad
 3/9/2021 12:19:55 PM

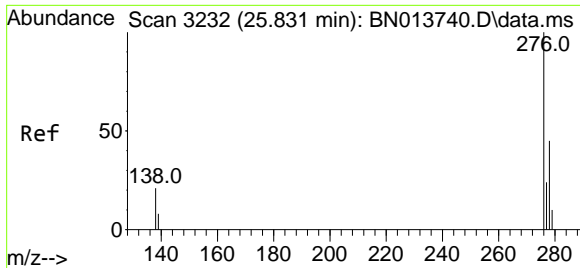


#34
 Bis(2-ethylhexyl)phthalate
 Concen: 0.22 ng
 RT: 21.186 min Scan# 2117
 Delta R.T. -0.008 min
 Lab File: BN013871.D
 Acq: 08 Mar 2021 16:00



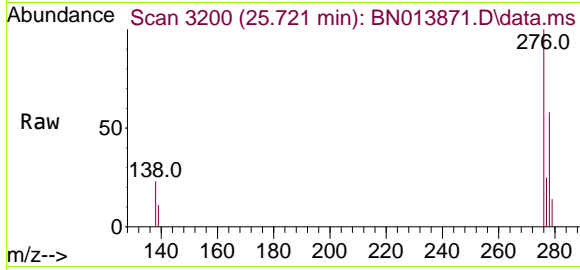
Tgt Ion:149 Resp: 11044
 Ion Ratio Lower Upper
 149 100
 167 26.8 22.1 33.1
 279 3.8 3.5 5.3





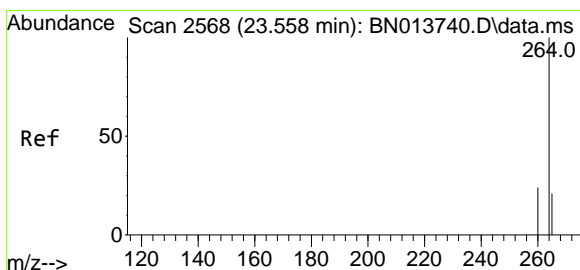
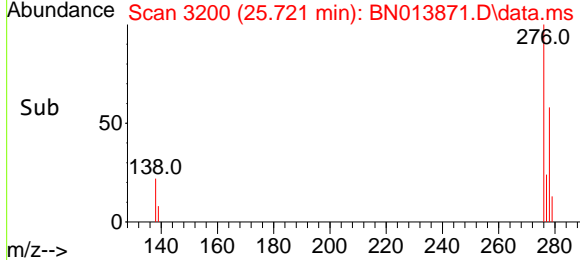
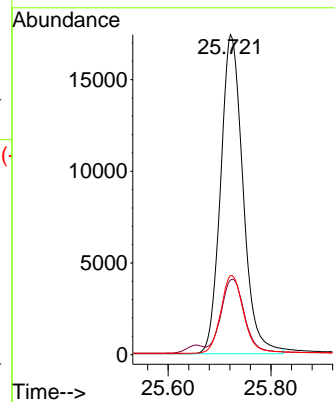
#35
 Indeno(1,2,3-cd)pyrene
 Concen: 0.42 ng
 RT: 25.721 min Scan# 3200
 Delta R.T. -0.007 min
 Lab File: BN013871.D
 Acq: 08 Mar 2021 16:00

Instrument :
 BNA_N
ClientSampled :
 PB135037BSD

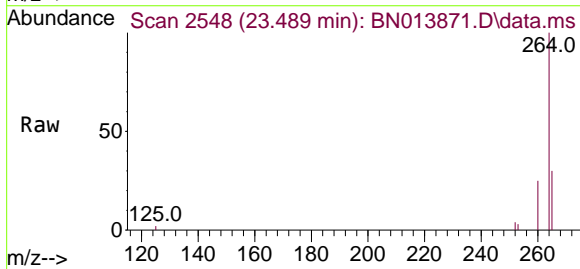


Tgt Ion: 276 Resp: 52573
 Ion Ratio Lower Upper
 276 100
 138 23.4 19.8 29.6
 277 24.8 19.9 29.9

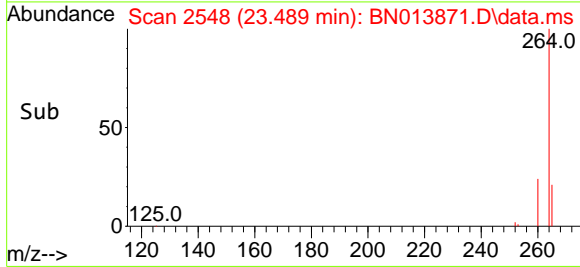
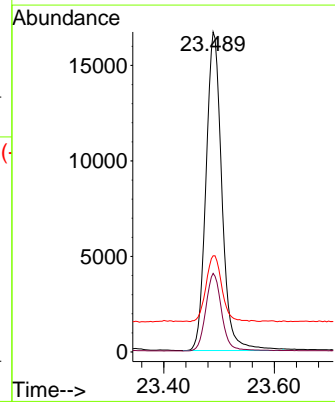
Manual Integrations
APPROVED
 mohammad
 3/9/2021 12:19:55 PM

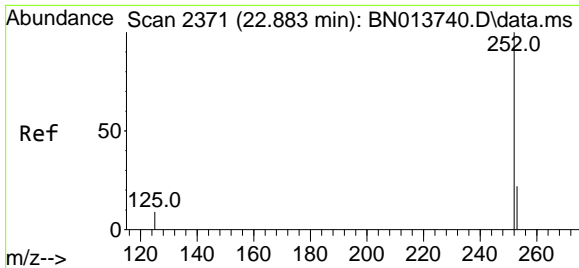


#36
 Perylene-d12
 Concen: 0.40 ng
 RT: 23.489 min Scan# 2548
 Delta R.T. -0.004 min
 Lab File: BN013871.D
 Acq: 08 Mar 2021 16:00

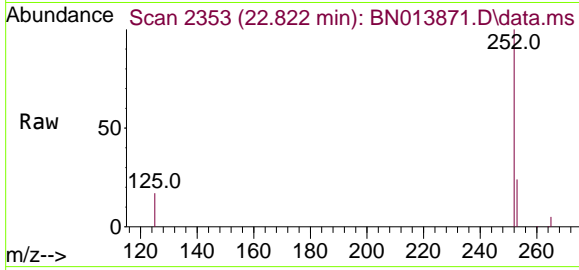


Tgt Ion: 264 Resp: 33268
 Ion Ratio Lower Upper
 264 100
 260 24.5 19.3 28.9
 265 30.0 66.2 99.4#

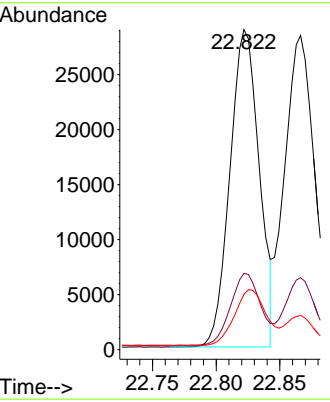
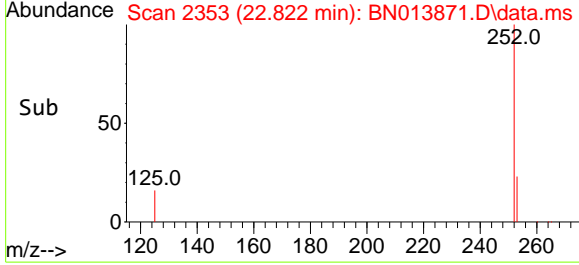




#37
 Benzo(b)fluoranthene
 Concen: 0.43 ng
 RT: 22.822 min Scan# 2353
 Delta R.T. -0.004 min
 Lab File: BN013871.D
 Acq: 08 Mar 2021 16:00

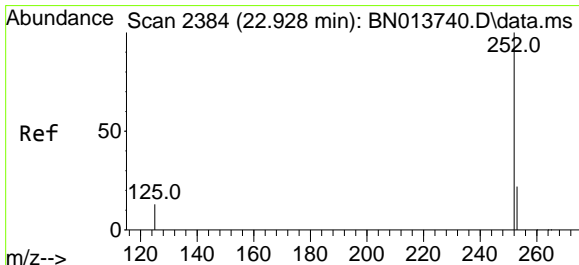


Tgt Ion:252 Resp: 46212
 Ion Ratio Lower Upper
 252 100
 253 23.9 20.4 30.6
 125 17.3 11.6 17.4

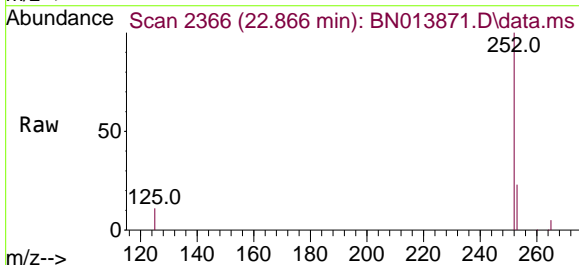


Instrument :
 BNA_N
ClientSampled :
 PB135037BSD

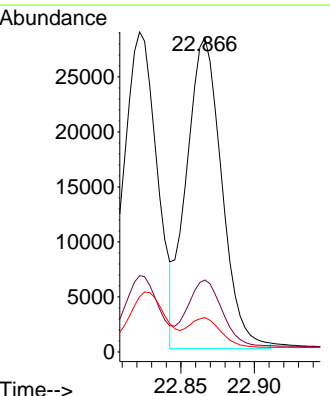
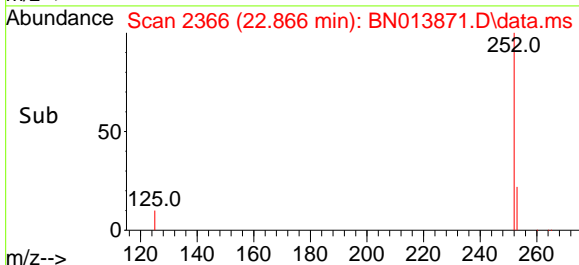
Manual Integrations
APPROVED
 mohammad
 3/9/2021 12:19:55 PM

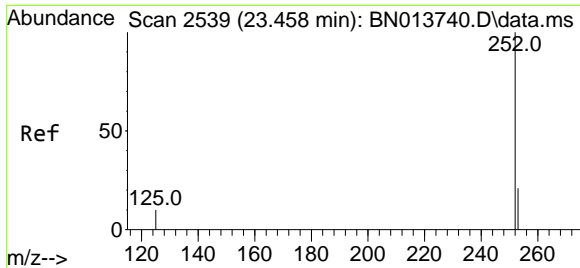


#38
 Benzo(k)fluoranthene
 Concen: 0.46 ng m
 RT: 22.866 min Scan# 2366
 Delta R.T. -0.000 min
 Lab File: BN013871.D
 Acq: 08 Mar 2021 16:00



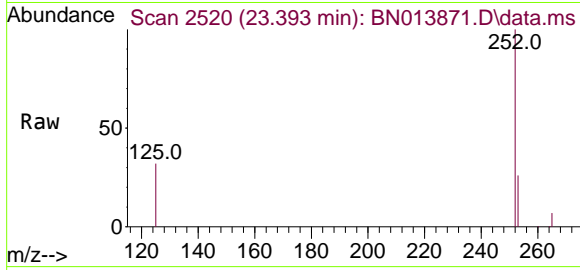
Tgt Ion:252 Resp: 47331
 Ion Ratio Lower Upper
 252 100
 253 22.9 20.5 30.7
 125 10.9 12.3 18.5#





#39
 Benzo(a)pyrene
 Concen: 0.46 ng
 RT: 23.393 min Scan# 2520
 Delta R.T. -0.004 min
 Lab File: BN013871.D
 Acq: 08 Mar 2021 16:00

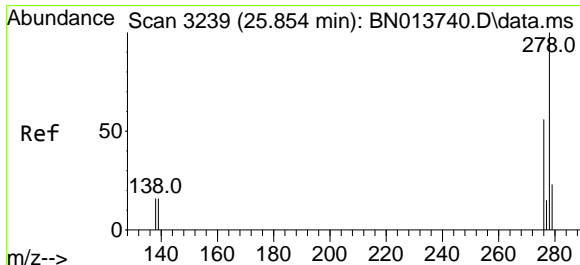
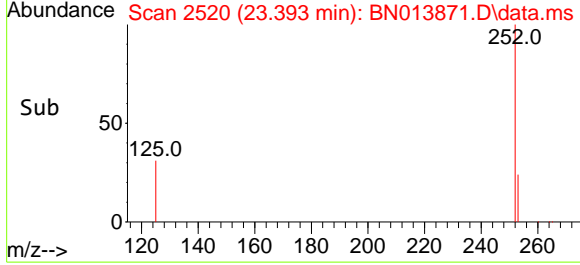
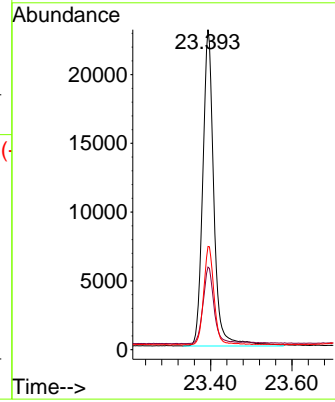
Instrument :
 BNA_N
ClientSampleId :
 PB135037BSD



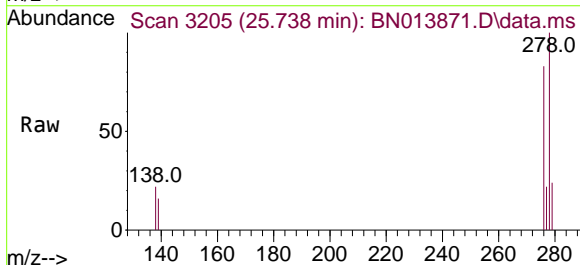
Tgt Ion:252 Resp: 43653

| Ion | Ratio | Lower | Upper |
|-----|-------|-------|-------|
| 252 | 100 | | |
| 253 | 25.8 | 21.8 | 32.6 |
| 125 | 32.2 | 14.6 | 21.8# |

Manual Integrations
APPROVED
 mohammad
 3/9/2021 12:19:55 PM

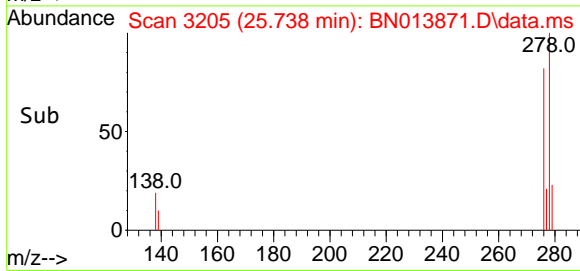
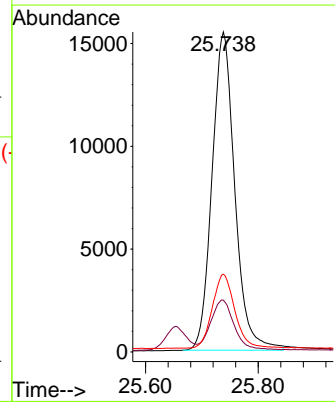


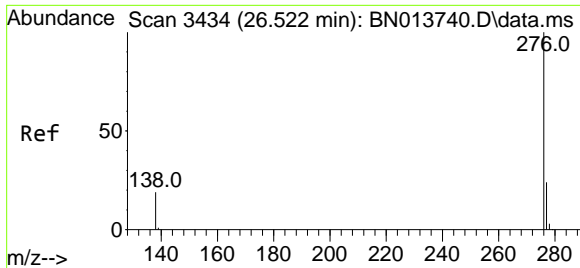
#40
 Dibenzo(a,h)anthracene
 Concen: 0.43 ng
 RT: 25.738 min Scan# 3205
 Delta R.T. -0.004 min
 Lab File: BN013871.D
 Acq: 08 Mar 2021 16:00



Tgt Ion:278 Resp: 43457

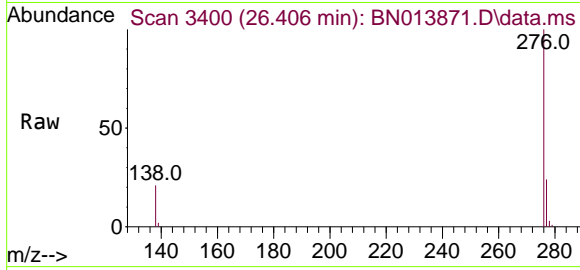
| Ion | Ratio | Lower | Upper |
|-----|-------|-------|-------|
| 278 | 100 | | |
| 139 | 16.2 | 13.1 | 19.7 |
| 279 | 24.3 | 21.4 | 32.0 |





#41
 Benzo(g,h,i)perylene
 Concen: 0.44 ng
 RT: 26.406 min Scan# 3400
 Delta R.T. -0.004 min
 Lab File: BN013871.D
 Acq: 08 Mar 2021 16:00

Instrument :
 BNA_N
ClientSampleId :
 PB135037BSD



Tgt Ion: 276 Resp: 44697

| Ion | Ratio | Lower | Upper |
|-----|-------|-------|-------|
| 276 | 100 | | |
| 277 | 24.0 | 20.0 | 30.0 |
| 138 | 21.1 | 17.8 | 26.8 |

Manual Integrations
APPROVED
 mohammad
 3/9/2021 12:19:55 PM

