

Data Path : Z:\svoasrv\HPCHEM1\BNA\_N\Data\BN031723\  
 Data File : BN024350.D  
 Acq On : 17 Mar 2023 17:35  
 Operator : CG/JU  
 Sample : PB151378BS  
 Misc :  
 ALS Vial : 4 Sample Multiplier: 1

Instrument :  
 BNA\_N  
 ClientSampleId :  
 PB151378BS

Quant Time: Mar 17 23:29:14 2023  
 Quant Method : Z:\svoasrv\HPCHEM1\BNA\_N\Methods\8270-SIM-BN031323.M  
 Quant Title : ASP BNA STANDARDS FOR 5 POINT CALIBRATION  
 QLast Update : Fri Mar 17 04:37:08 2023  
 Response via : Initial Calibration

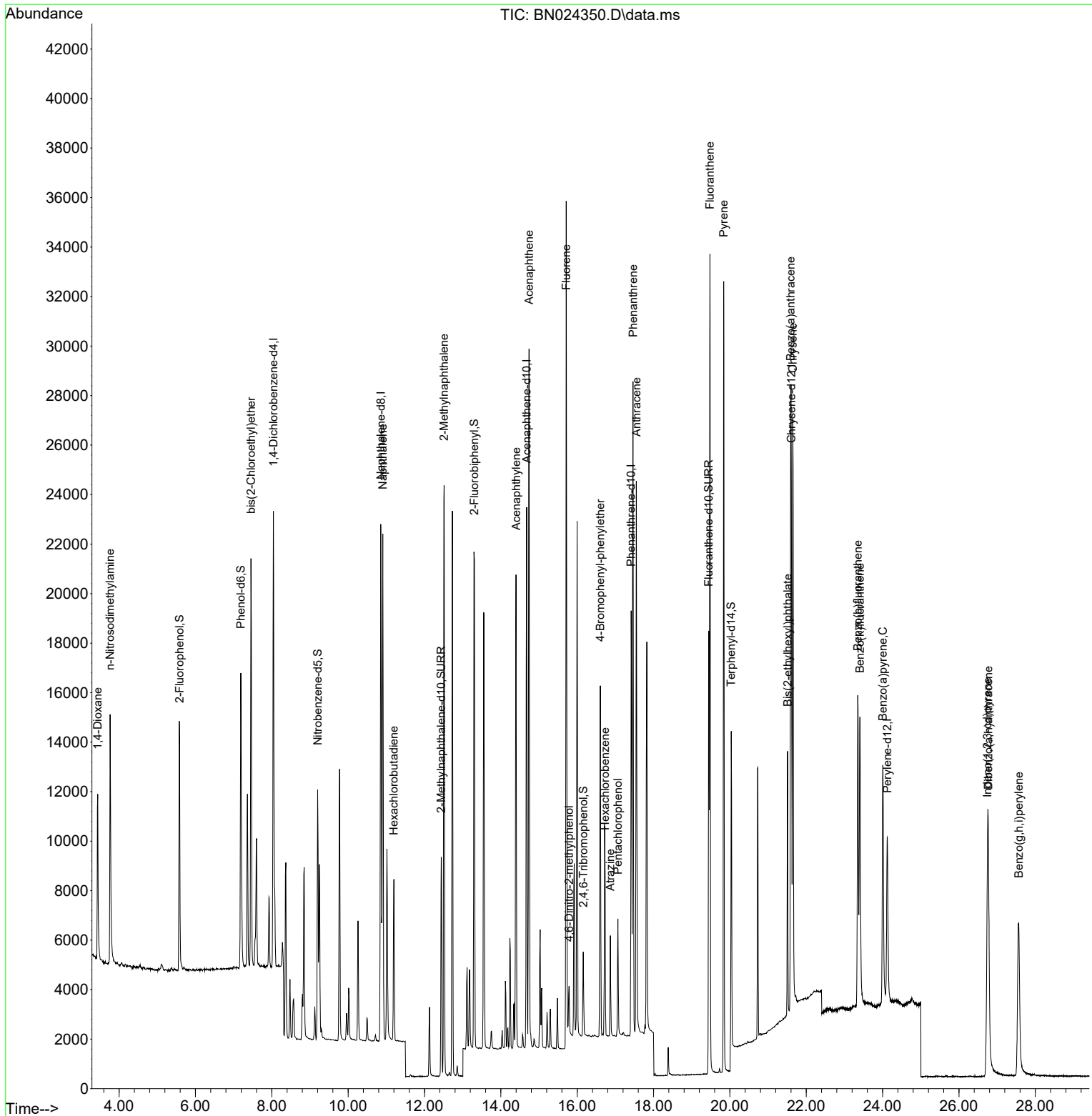
Compound	R.T.	QIon	Response	Conc	Units	Dev(Min)	
Internal Standards							
1) 1,4-Dichlorobenzene-d4	8.040	152	8800	0.400	ng	0.00	
7) Naphthalene-d8	10.855	136	25540	0.400	ng	# 0.00	
13) Acenaphthene-d10	14.675	164	11598	0.400	ng	0.00	
19) Phenanthrene-d10	17.413	188	22737	0.400	ng	# 0.00	
29) Chrysene-d12	21.610	240	15501	0.400	ng	# 0.00	
35) Perylene-d12	24.123	264	11413	0.400	ng	# 0.00	
System Monitoring Compounds							
4) 2-Fluorophenol	5.584	112	7889	0.405	ng	0.00	
5) Phenol-d6	7.188	99	10199	0.407	ng	0.00	
8) Nitrobenzene-d5	9.201	82	7804	0.457	ng	0.00	
11) 2-Methylnaphthalene-d10	12.437	152	11664	0.372	ng	0.00	
14) 2,4,6-Tribromophenol	16.159	330	1784	0.301	ng	0.00	
15) 2-Fluorobiphenyl	13.307	172	18742	0.428	ng	0.00	
27) Fluoranthene-d10	19.446	212	17927	0.372	ng	0.00	
31) Terphenyl-d14	20.034	244	10202	0.390	ng	0.00	
Target Compounds							
2) 1,4-Dioxane	3.439	88	4213	0.440	ng	90	Qvalue
3) n-Nitrosodimethylamine	3.764	42	7311	0.521	ng	88	
6) bis(2-Chloroethyl)ether	7.455	93	10841	0.437	ng	92	
9) Naphthalene	10.909	128	26680	0.411	ng	99	
10) Hexachlorobutadiene	11.197	225	5012	0.407	ng	# 100	
12) 2-Methylnaphthalene	12.512	142	16381	0.374	ng	99	
16) Acenaphthylene	14.397	152	21399	0.389	ng	100	
17) Acenaphthene	14.739	154	14148	0.404	ng	96	
18) Fluorene	15.712	166	16145	0.386	ng	99	
20) 4,6-Dinitro-2-methylph...	15.787	198	941	0.400	ng	86	
21) 4-Bromophenyl-phenylether	16.606	248	4819	0.356	ng	# 83	
22) Hexachlorobenzene	16.730	284	6654	0.401	ng	96	
23) Atrazine	16.867	200	3000	0.350	ng	# 91	
24) Pentachlorophenol	17.065	266	2179	0.344	ng	98	
25) Phenanthrene	17.462	178	27598	0.410	ng	100	
26) Anthracene	17.549	178	23257	0.374	ng	99	
28) Fluoranthene	19.476	202	28076	0.381	ng	99	
30) Pyrene	19.838	202	27899	0.444	ng	100	
32) Benzo(a)anthracene	21.592	228	19576	0.378	ng	99	
33) Chrysene	21.646	228	23112	0.418	ng	98	
34) Bis(2-ethylhexyl)phtha...	21.511	149	9722	0.399	ng	98	
36) Indeno(1,2,3-cd)pyrene	26.746	276	16337	0.382	ng	97	
37) Benzo(b)fluoranthene	23.351	252	18442	0.415	ng	# 94	
38) Benzo(k)fluoranthene	23.407	252	18352	0.401	ng	# 95	
39) Benzo(a)pyrene	24.006	252	15863	0.390	ng	# 92	
40) Dibenzo(a,h)anthracene	26.769	278	12016	0.363	ng	95	
41) Benzo(g,h,i)perylene	27.564	276	15383	0.398	ng	97	

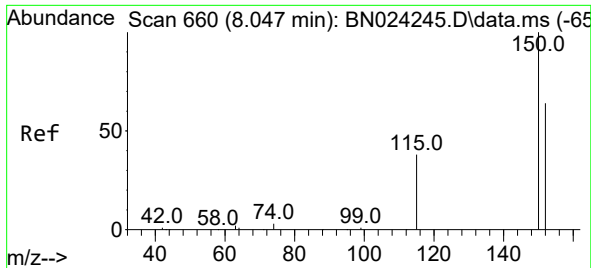
(#) = qualifier out of range (m) = manual integration (+) = signals summed

Data Path : Z:\svoasrv\HPCHEM1\BNA\_N\Data\BN031723\  
 Data File : BN024350.D  
 Acq On : 17 Mar 2023 17:35  
 Operator : CG/JU  
 Sample : PB151378BS  
 Misc :  
 ALS Vial : 4 Sample Multiplier: 1

Instrument :  
 BNA\_N  
 ClientSampleId :  
 PB151378BS

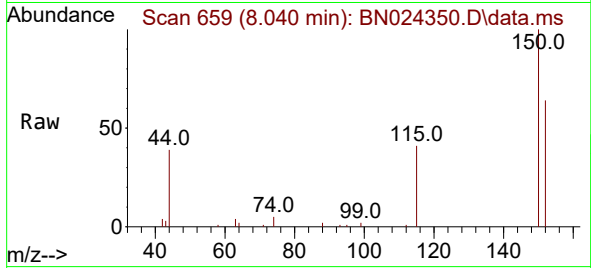
Quant Time: Mar 17 23:29:14 2023  
 Quant Method : Z:\svoasrv\HPCHEM1\BNA\_N\Methods\8270-SIM-BN031323.M  
 Quant Title : ASP BNA STANDARDS FOR 5 POINT CALIBRATION  
 QLast Update : Fri Mar 17 04:37:08 2023  
 Response via : Initial Calibration



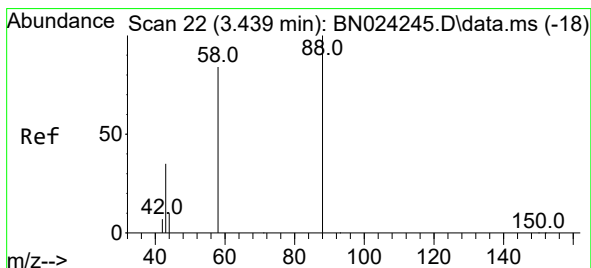
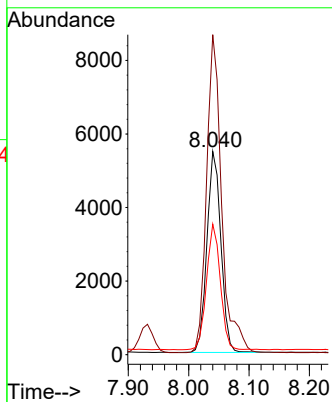
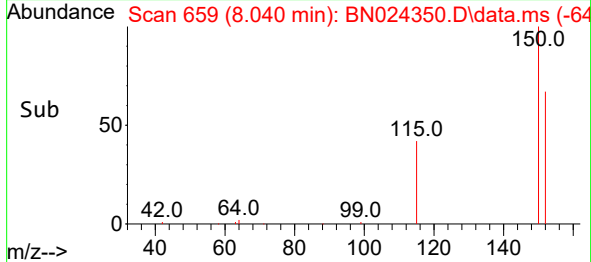


#1  
 1,4-Dichlorobenzene-d4  
 Concen: 0.400 ng  
 RT: 8.040 min Scan# 61  
 Delta R.T. -0.000 min  
 Lab File: BN024350.D  
 Acq: 17 Mar 2023 17:35

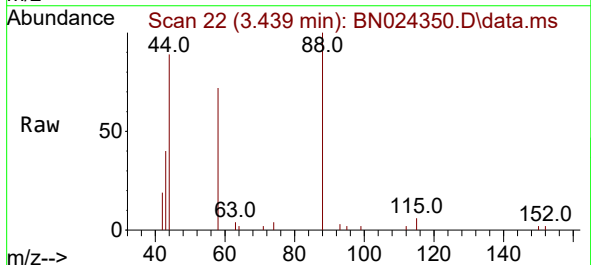
Instrument :  
 BNA\_N  
 ClientSampleId :  
 PB151378BS



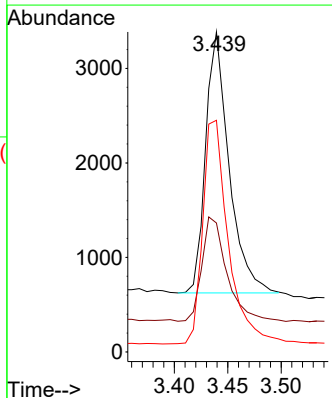
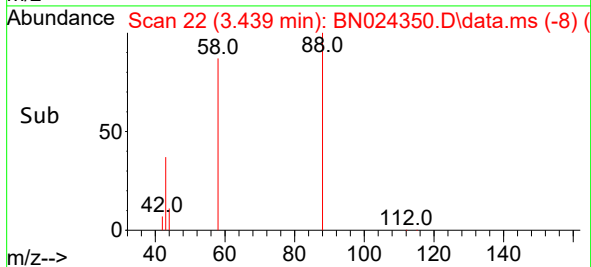
Tgt Ion:152 Resp: 8800  
 Ion Ratio Lower Upper  
 152 100  
 150 157.4 124.7 187.1  
 115 64.2 49.1 73.7

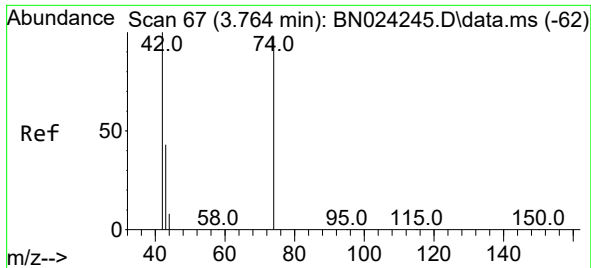


#2  
 1,4-Dioxane  
 Concen: 0.440 ng  
 RT: 3.439 min Scan# 22  
 Delta R.T. 0.000 min  
 Lab File: BN024350.D  
 Acq: 17 Mar 2023 17:35



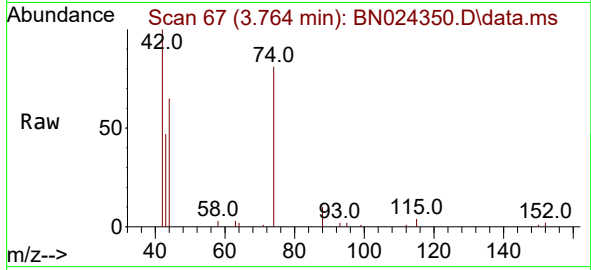
Tgt Ion: 88 Resp: 4213  
 Ion Ratio Lower Upper  
 88 100  
 43 42.5 29.0 43.4  
 58 93.5 67.3 100.9





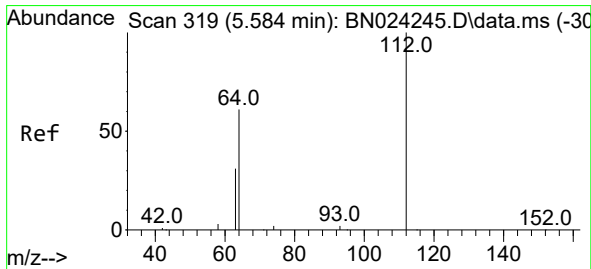
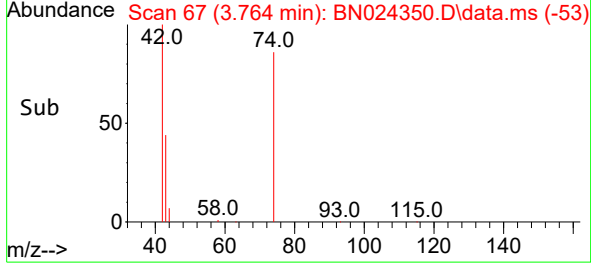
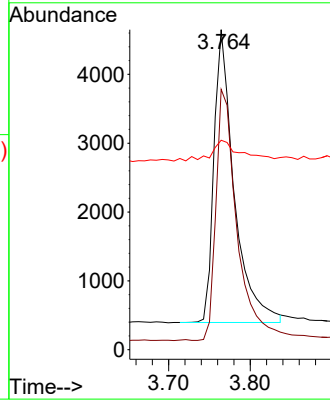
#3  
 n-Nitrosodimethylamine  
 Concen: 0.521 ng  
 RT: 3.764 min Scan# 61  
 Delta R.T. 0.000 min  
 Lab File: BN024350.D  
 Acq: 17 Mar 2023 17:35

Instrument :  
 BNA\_N  
 ClientSampleId :  
 PB151378BS



Tgt Ion: 42 Resp: 7311

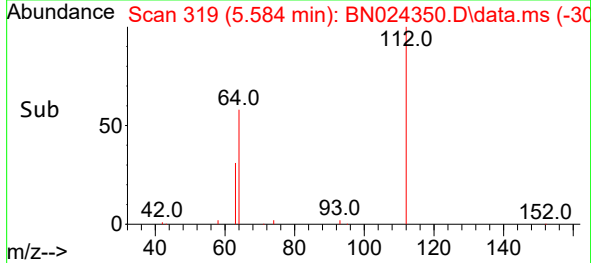
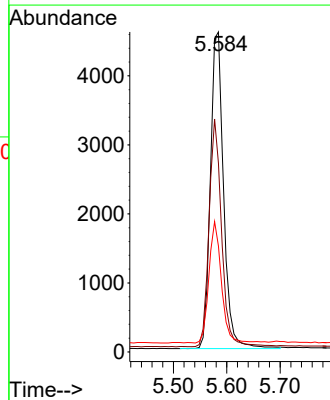
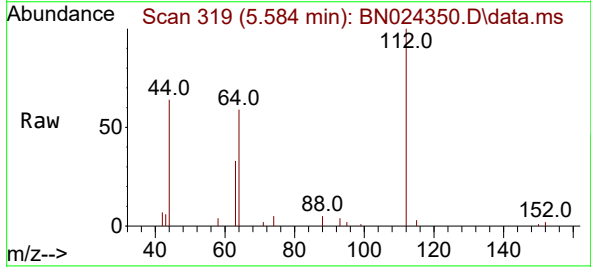
Ion	Ratio	Lower	Upper
42	100		
74	89.1	81.6	122.4
44	10.2	7.3	10.9

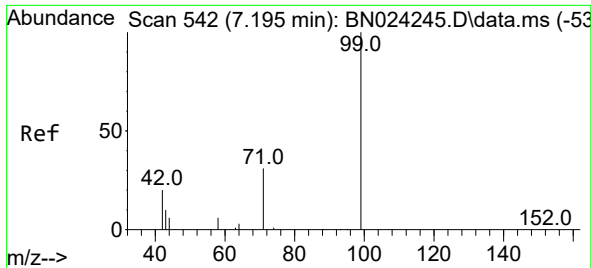


#4  
 2-Fluorophenol  
 Concen: 0.405 ng  
 RT: 5.584 min Scan# 319  
 Delta R.T. 0.007 min  
 Lab File: BN024350.D  
 Acq: 17 Mar 2023 17:35

Tgt Ion: 112 Resp: 7889

Ion	Ratio	Lower	Upper
112	100		
64	68.5	49.0	73.6
63	36.2	25.7	38.5



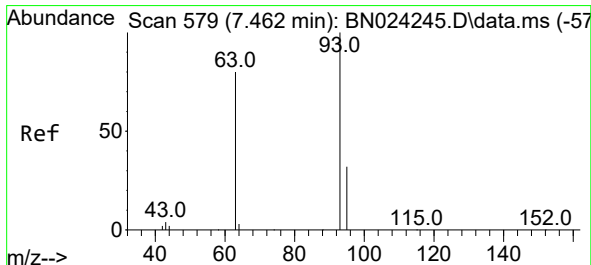
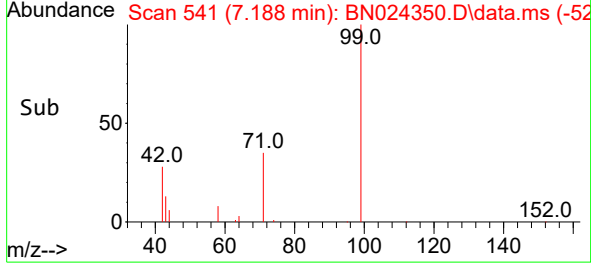
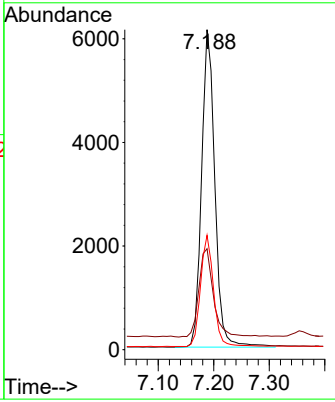
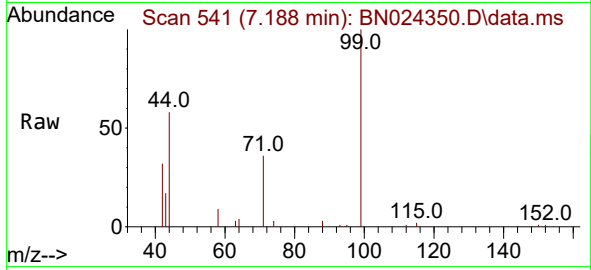


#5  
 Phenol-d6  
 Concen: 0.407 ng  
 RT: 7.188 min Scan# 541  
 Delta R.T. 0.000 min  
 Lab File: BN024350.D  
 Acq: 17 Mar 2023 17:35

Instrument : BNA\_N  
 ClientSampleId : PB151378BS

Tgt Ion: 99 Resp: 10199

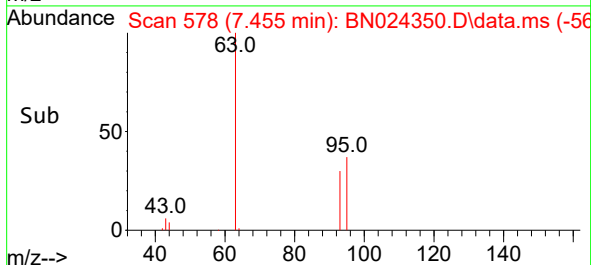
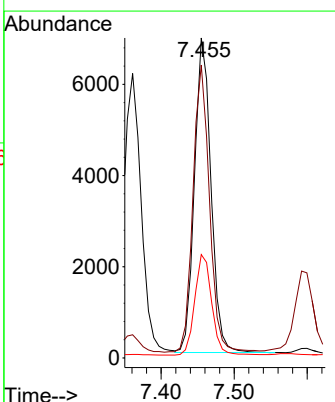
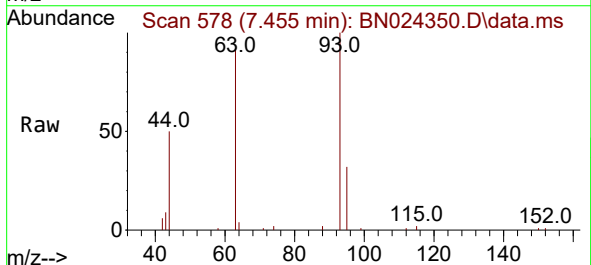
Ion	Ratio	Lower	Upper
99	100		
42	31.0	20.1	30.1#
71	34.2	25.8	38.8

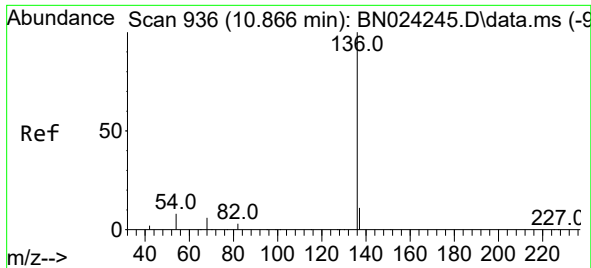


#6  
 bis(2-Chloroethyl)ether  
 Concen: 0.437 ng  
 RT: 7.455 min Scan# 578  
 Delta R.T. 0.000 min  
 Lab File: BN024350.D  
 Acq: 17 Mar 2023 17:35

Tgt Ion: 93 Resp: 10841

Ion	Ratio	Lower	Upper
93	100		
63	90.9	65.4	98.2
95	32.8	25.8	38.8



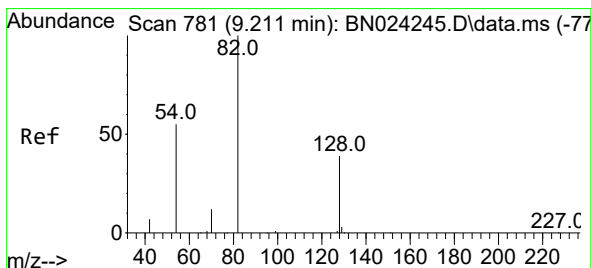
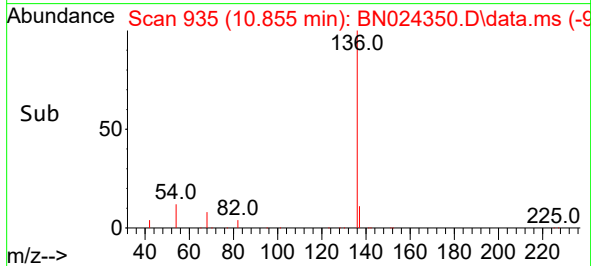
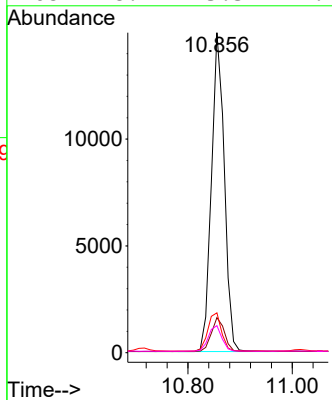
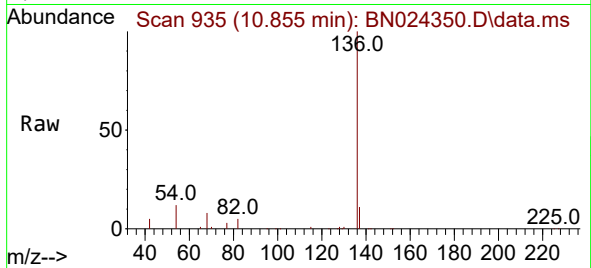


#7  
 Naphthalene-d8  
 Concen: 0.400 ng  
 RT: 10.855 min Scan# 91  
 Delta R.T. 0.000 min  
 Lab File: BN024350.D  
 Acq: 17 Mar 2023 17:35

Instrument :  
 BNA\_N  
 ClientSampleId :  
 PB151378BS

Tgt Ion:136 Resp: 25540

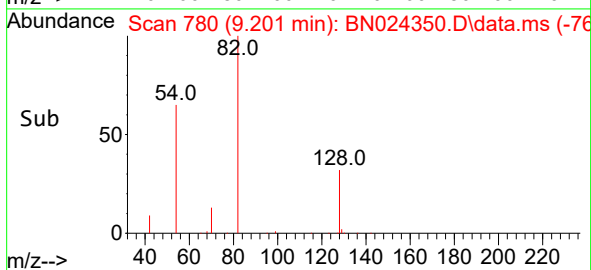
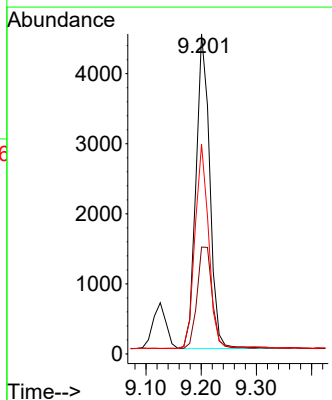
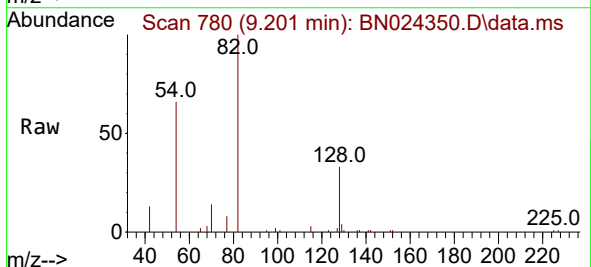
Ion	Ratio	Lower	Upper
136	100		
137	10.9	8.9	13.3
54	12.5	7.1	10.7#
68	8.4	5.3	7.9#

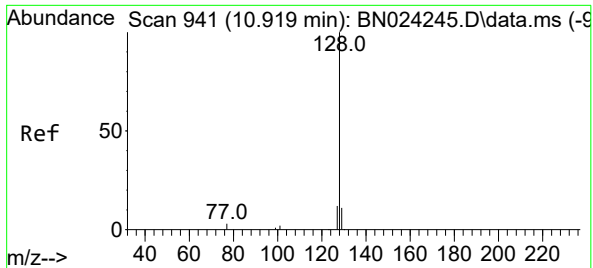


#8  
 Nitrobenzene-d5  
 Concen: 0.457 ng  
 RT: 9.201 min Scan# 780  
 Delta R.T. 0.000 min  
 Lab File: BN024350.D  
 Acq: 17 Mar 2023 17:35

Tgt Ion: 82 Resp: 7804

Ion	Ratio	Lower	Upper
82	100		
128	33.4	32.4	48.6
54	65.6	45.2	67.8



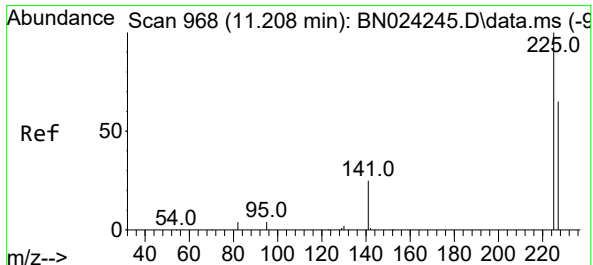
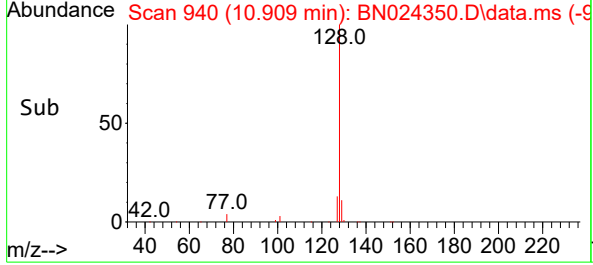
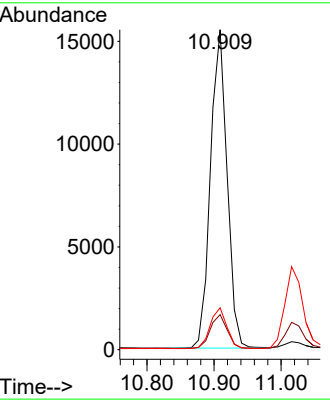
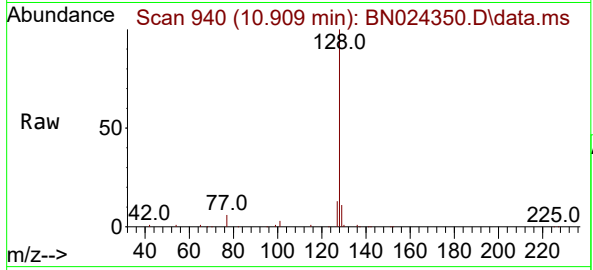


#9  
 Naphthalene  
 Concen: 0.411 ng  
 RT: 10.909 min Scan# 94  
 Delta R.T. 0.000 min  
 Lab File: BN024350.D  
 Acq: 17 Mar 2023 17:35

Instrument : BNA\_N  
 ClientSampleId : PB151378BS

Tgt Ion:128 Resp: 26680

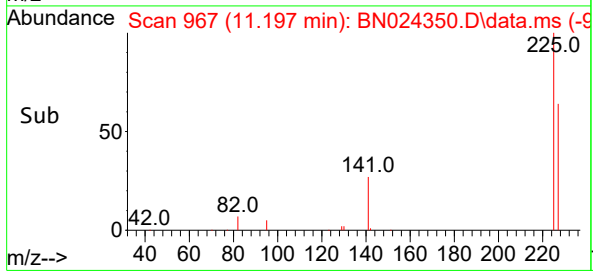
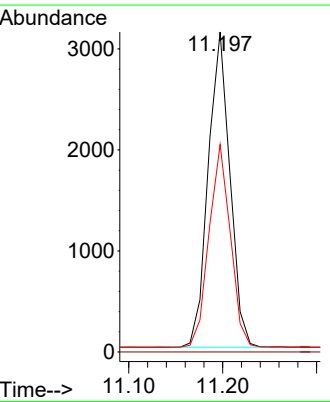
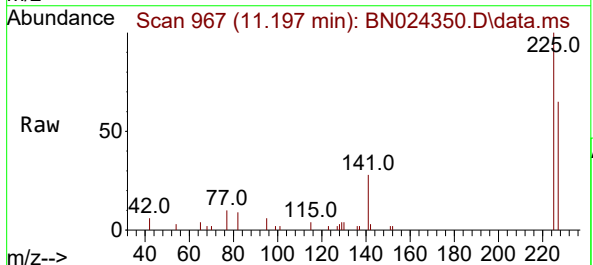
Ion	Ratio	Lower	Upper
128	100		
129	10.9	9.0	13.6
127	13.1	10.2	15.4

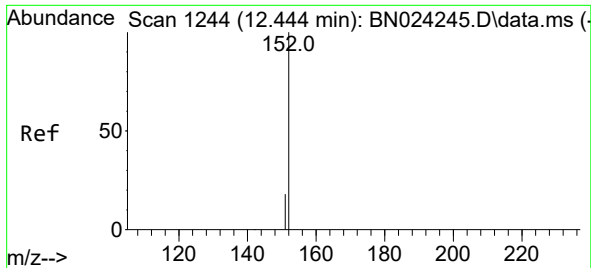


#10  
 Hexachlorobutadiene  
 Concen: 0.407 ng  
 RT: 11.197 min Scan# 967  
 Delta R.T. 0.000 min  
 Lab File: BN024350.D  
 Acq: 17 Mar 2023 17:35

Tgt Ion:225 Resp: 5012

Ion	Ratio	Lower	Upper
225	100		
223	0.0	0.0	0.0
227	63.4	51.0	76.4

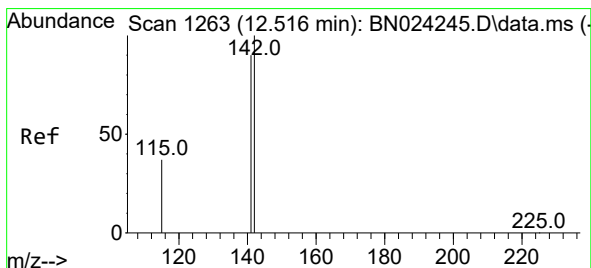
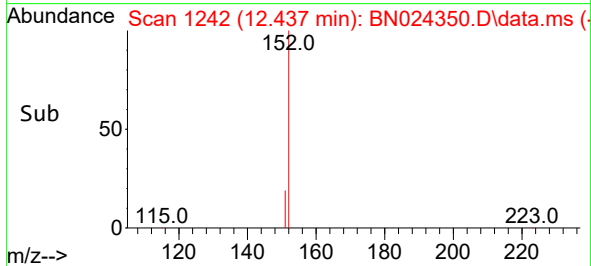
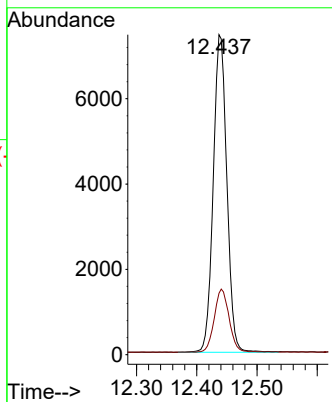
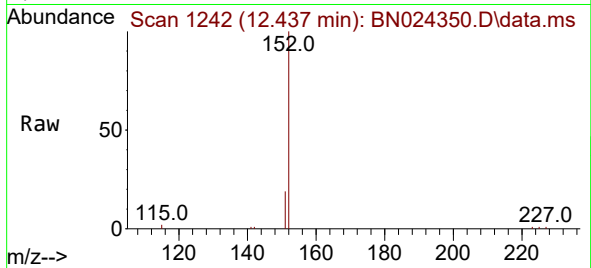




#11  
 2-Methylnaphthalene-d10  
 Concen: 0.372 ng  
 RT: 12.437 min Scan# 11  
 Delta R.T. -0.004 min  
 Lab File: BN024350.D  
 Acq: 17 Mar 2023 17:35

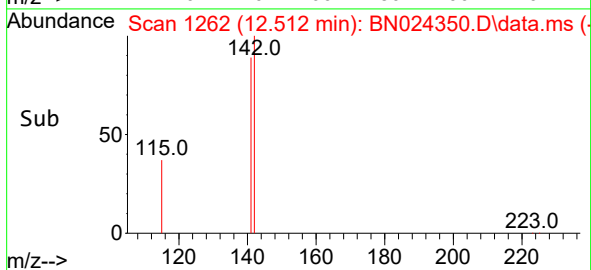
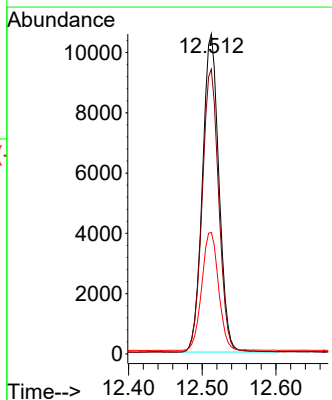
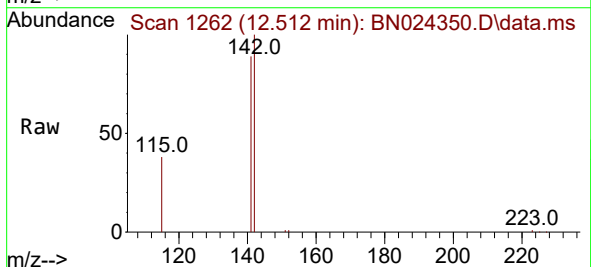
Instrument :  
 BNA\_N  
 ClientSampleId :  
 PB151378BS

Tgt Ion:152 Resp: 11664  
 Ion Ratio Lower Upper  
 152 100  
 151 21.8 16.8 25.2

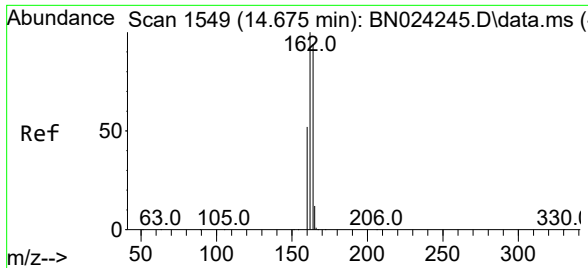


#12  
 2-Methylnaphthalene  
 Concen: 0.374 ng  
 RT: 12.512 min Scan# 1262  
 Delta R.T. 0.000 min  
 Lab File: BN024350.D  
 Acq: 17 Mar 2023 17:35

Tgt Ion:142 Resp: 16381  
 Ion Ratio Lower Upper  
 142 100  
 141 89.0 71.8 107.6  
 115 37.9 30.0 45.0





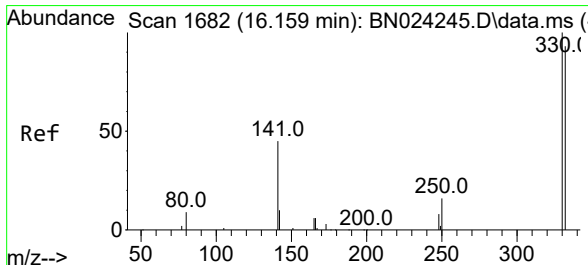
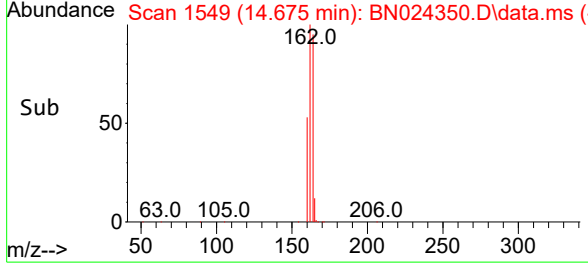
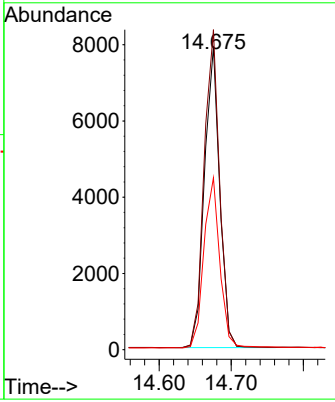
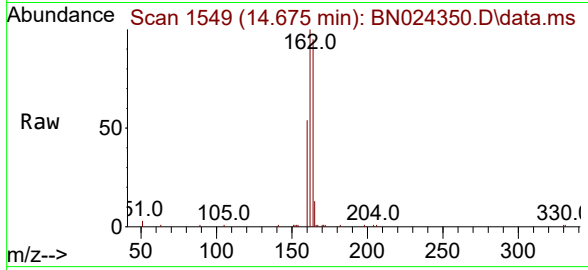


#13  
 Acenaphthene-d10  
 Concen: 0.400 ng  
 RT: 14.675 min Scan# 11  
 Delta R.T. 0.000 min  
 Lab File: BN024350.D  
 Acq: 17 Mar 2023 17:35

Instrument : BNA\_N  
 ClientSampleId : PB151378BS

Tgt Ion:164 Resp: 11598

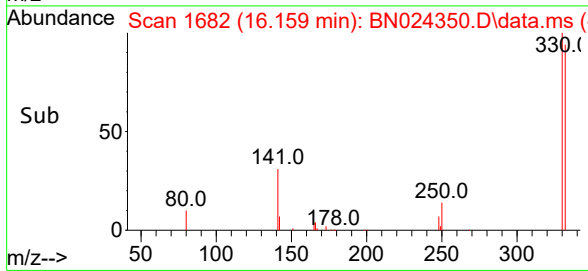
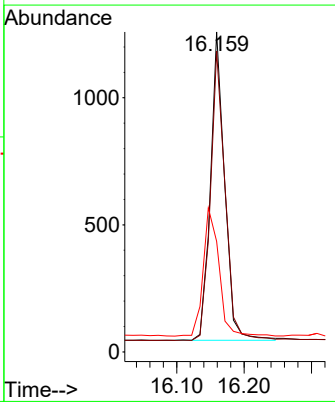
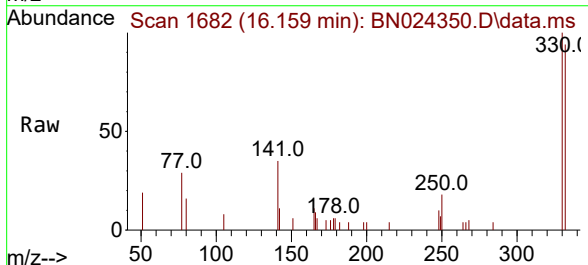
Ion	Ratio	Lower	Upper
164	100		
162	105.6	84.7	127.1
160	56.7	44.6	66.8

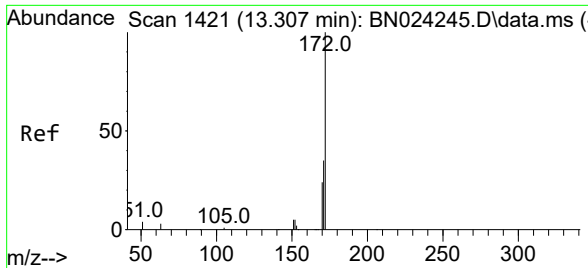


#14  
 2,4,6-Tribromophenol  
 Concen: 0.301 ng  
 RT: 16.159 min Scan# 1682  
 Delta R.T. 0.000 min  
 Lab File: BN024350.D  
 Acq: 17 Mar 2023 17:35

Tgt Ion:330 Resp: 1784

Ion	Ratio	Lower	Upper
330	100		
332	96.9	78.0	117.0
141	46.2	30.8	46.2

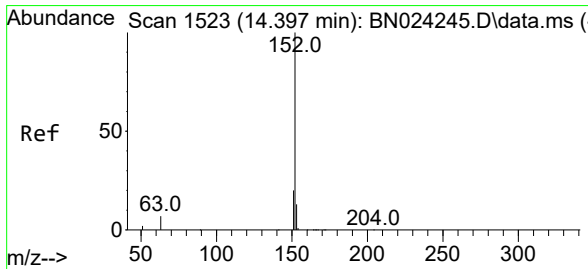
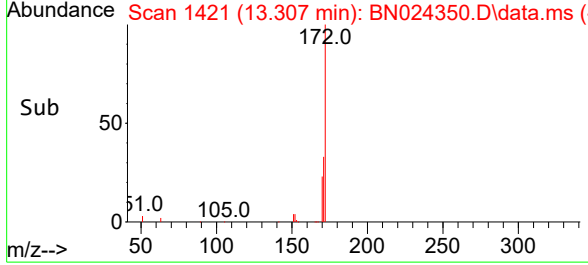
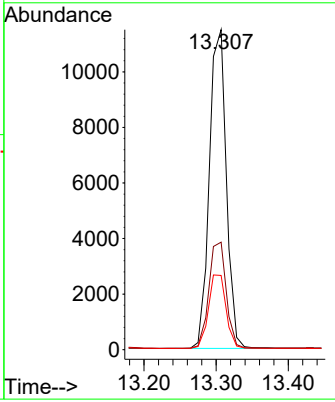
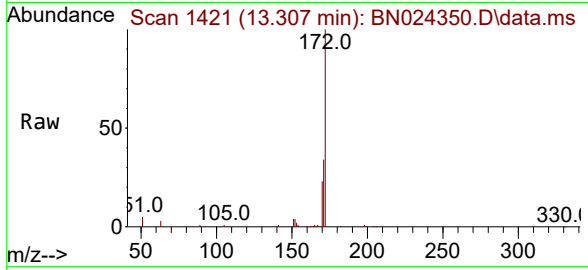




#15  
 2-Fluorobiphenyl  
 Concen: 0.428 ng  
 RT: 13.307 min Scan# 1421  
 Delta R.T. 0.000 min  
 Lab File: BN024350.D  
 Acq: 17 Mar 2023 17:35

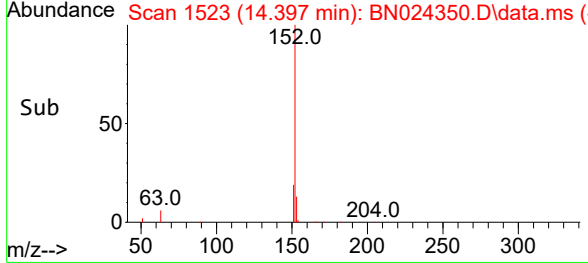
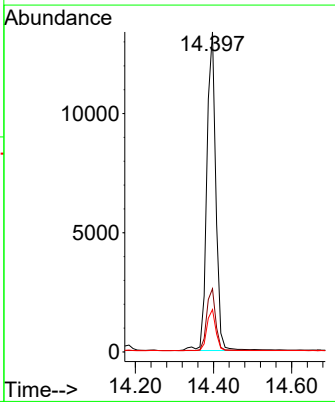
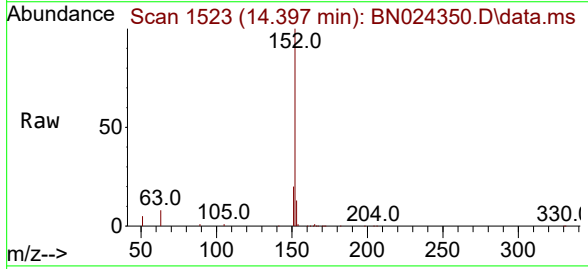
Instrument : BNA\_N  
 Client Sample Id : PB151378BS

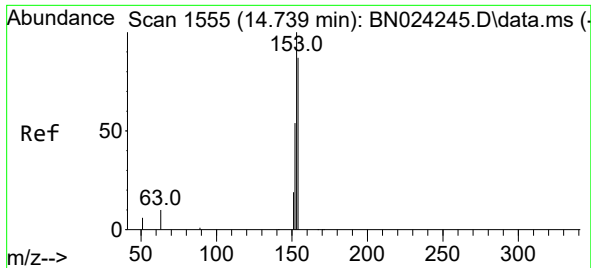
Tgt Ion	Resp	Lower	Upper
172	18742		
171	33.6	27.8	41.8
170	23.2	19.0	28.6



#16  
 Acenaphthylene  
 Concen: 0.389 ng  
 RT: 14.397 min Scan# 1523  
 Delta R.T. 0.000 min  
 Lab File: BN024350.D  
 Acq: 17 Mar 2023 17:35

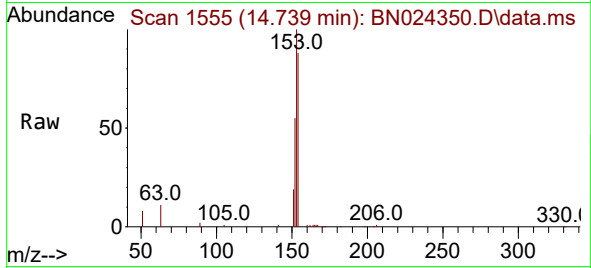
Tgt Ion	Resp	Lower	Upper
152	21399		
151	19.3	15.4	23.0
153	13.1	10.4	15.6



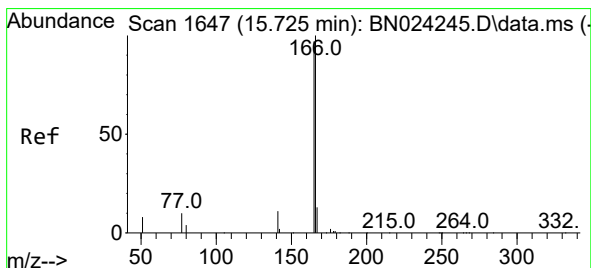
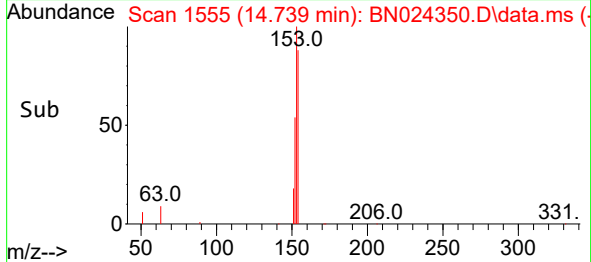
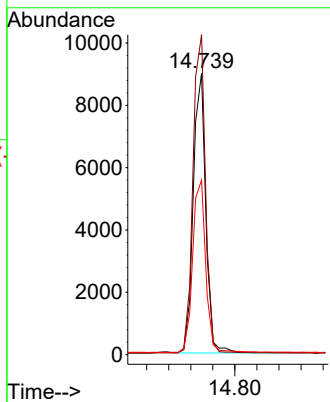


#17  
 Acenaphthene  
 Concen: 0.404 ng  
 RT: 14.739 min Scan# 11  
 Delta R.T. 0.000 min  
 Lab File: BN024350.D  
 Acq: 17 Mar 2023 17:35

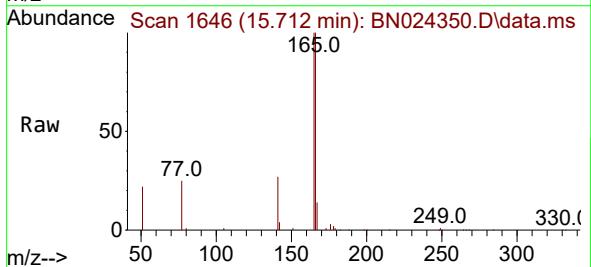
Instrument :  
 BNA\_N  
 ClientSampleId :  
 PB151378BS



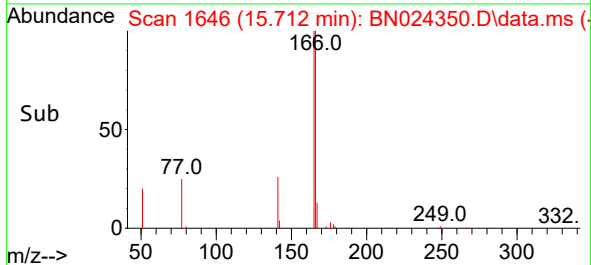
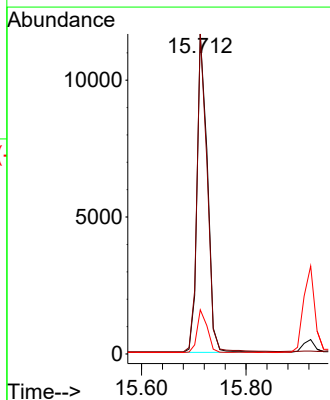
Tgt Ion:154 Resp: 14148  
 Ion Ratio Lower Upper  
 154 100  
 153 114.1 88.4 132.6  
 152 64.3 48.7 73.1

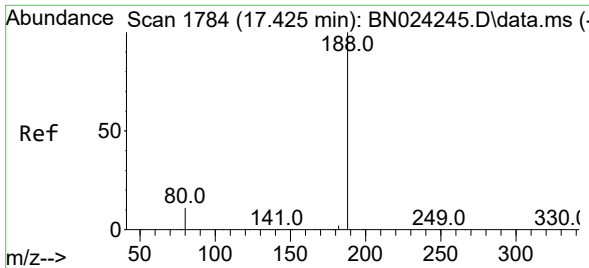


#18  
 Fluorene  
 Concen: 0.386 ng  
 RT: 15.712 min Scan# 1646  
 Delta R.T. 0.000 min  
 Lab File: BN024350.D  
 Acq: 17 Mar 2023 17:35



Tgt Ion:166 Resp: 16145  
 Ion Ratio Lower Upper  
 166 100  
 165 98.7 80.2 120.2  
 167 13.3 10.8 16.2

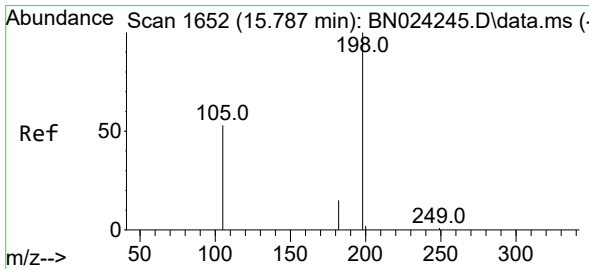
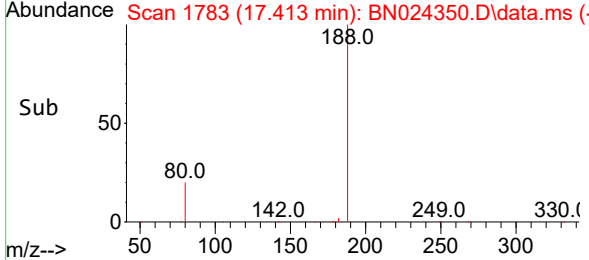
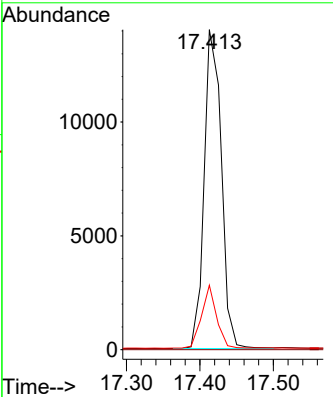
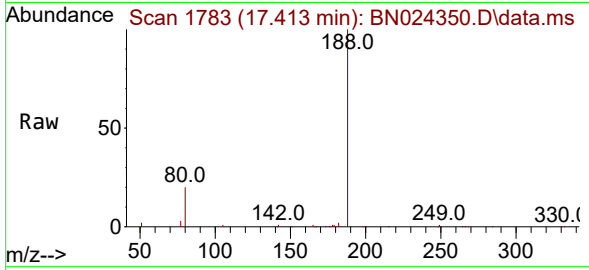




#19  
 Phenanthrene-d10  
 Concen: 0.400 ng  
 RT: 17.413 min Scan# 11  
 Delta R.T. 0.000 min  
 Lab File: BN024350.D  
 Acq: 17 Mar 2023 17:35

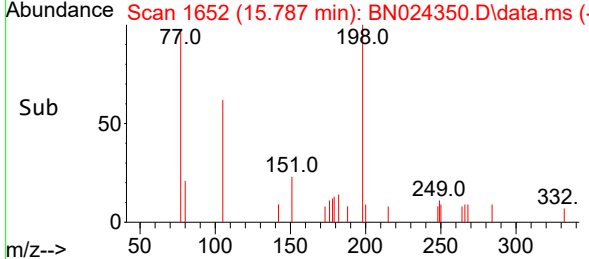
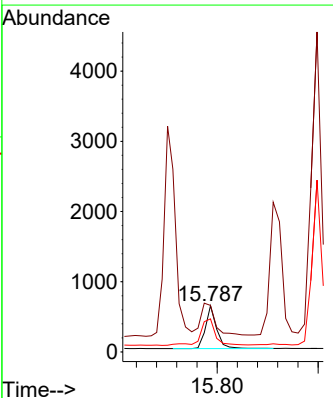
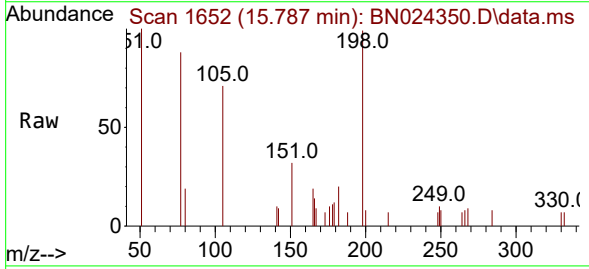
Instrument : BNA\_N  
 ClientSampleId : PB151378BS

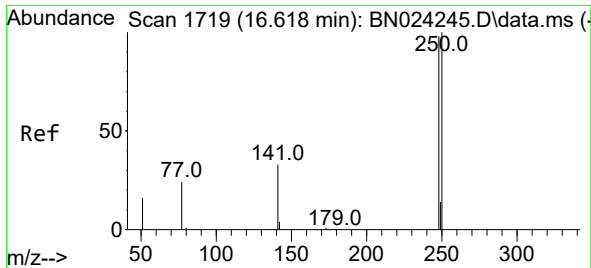
Tgt Ion	Resp	Lower	Upper
188	100		
94	0.0	0.0	0.0
80	20.1	8.9	13.3



#20  
 4,6-Dinitro-2-methylphenol  
 Concen: 0.400 ng  
 RT: 15.787 min Scan# 1652  
 Delta R.T. 0.000 min  
 Lab File: BN024350.D  
 Acq: 17 Mar 2023 17:35

Tgt Ion	Resp	Lower	Upper
198	100		
51	100.8	68.2	102.2
105	71.6	51.6	77.4

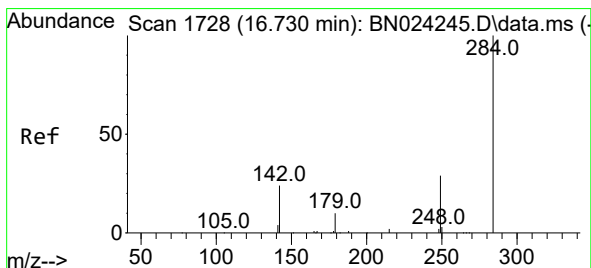
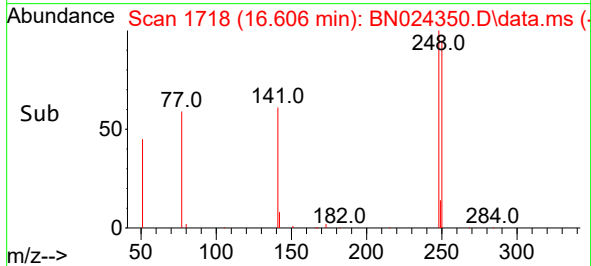
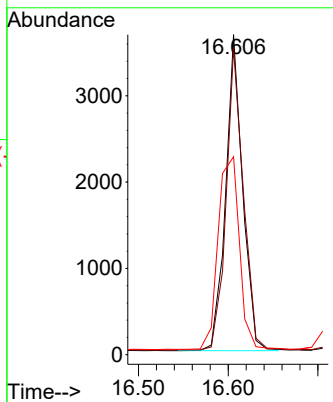
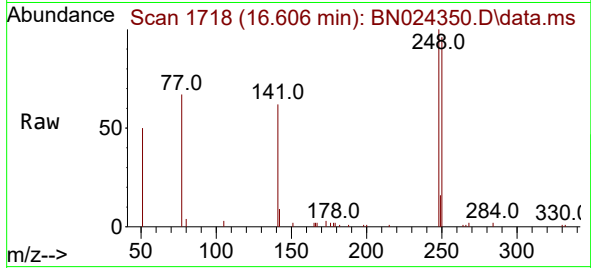




#21  
 4-Bromophenyl-phenylether  
 Concen: 0.356 ng  
 RT: 16.606 min Scan# 1718  
 Delta R.T. 0.000 min  
 Lab File: BN024350.D  
 Acq: 17 Mar 2023 17:35

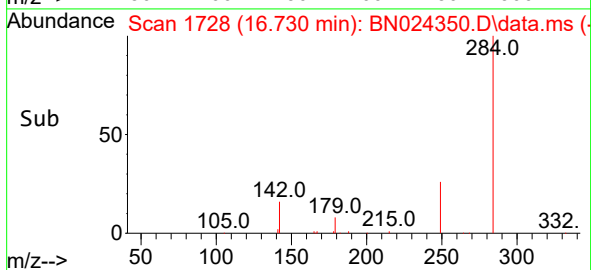
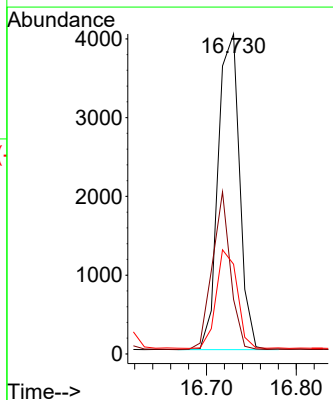
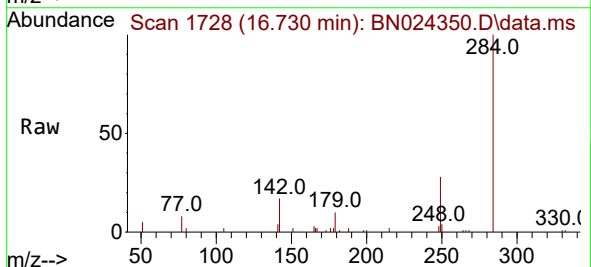
Instrument :  
 BNA\_N  
 ClientSampleId :  
 PB151378BS

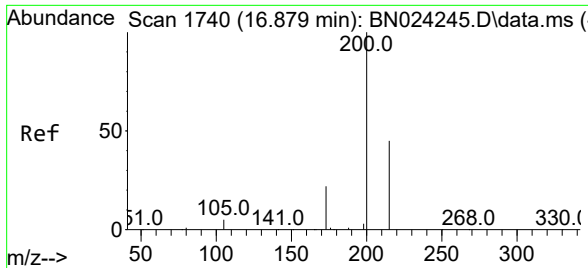
Tgt Ion:248 Resp: 4819  
 Ion Ratio Lower Upper  
 248 100  
 250 95.7 81.9 122.9  
 141 61.8 28.2 42.2#



#22  
 Hexachlorobenzene  
 Concen: 0.401 ng  
 RT: 16.730 min Scan# 1728  
 Delta R.T. 0.000 min  
 Lab File: BN024350.D  
 Acq: 17 Mar 2023 17:35

Tgt Ion:284 Resp: 6654  
 Ion Ratio Lower Upper  
 284 100  
 142 42.2 30.2 45.4  
 249 30.4 24.5 36.7



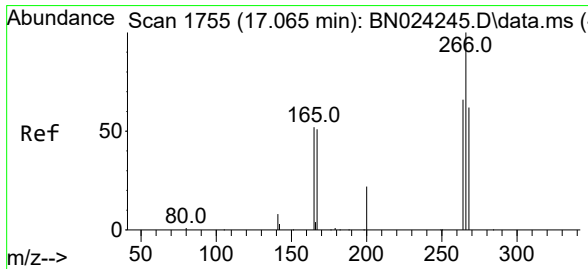
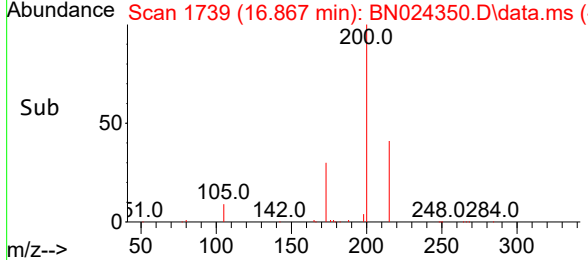
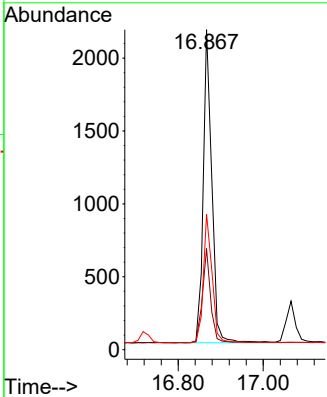
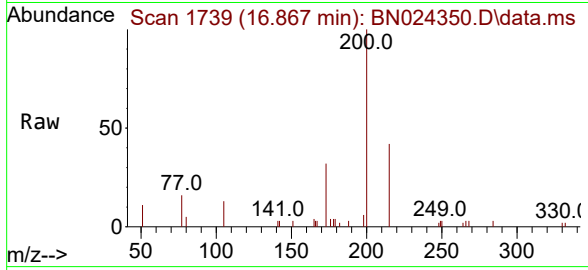


#23  
 Atrazine  
 Concen: 0.350 ng  
 RT: 16.867 min Scan# 1739  
 Delta R.T. 0.000 min  
 Lab File: BN024350.D  
 Acq: 17 Mar 2023 17:35

Instrument : BNA\_N  
 ClientSampleId : PB151378BS

Tgt Ion: 200 Resp: 3000

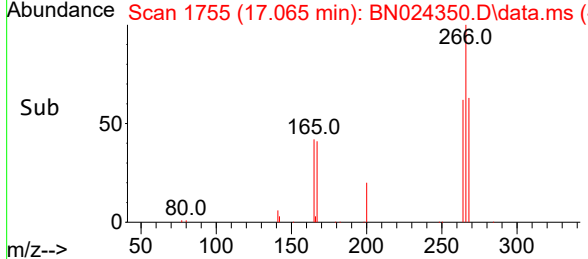
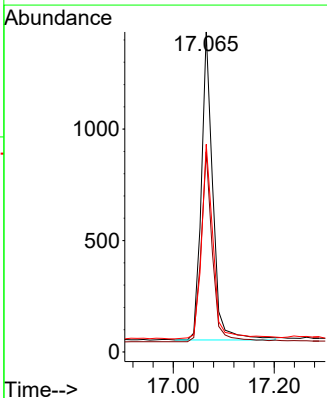
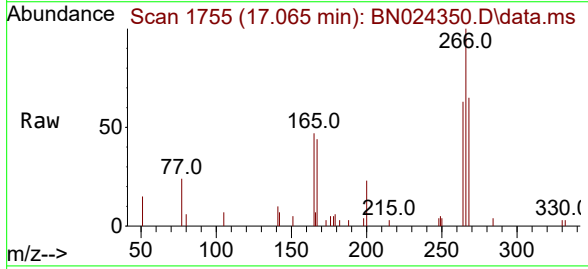
Ion	Ratio	Lower	Upper
200	100		
173	31.6	18.9	28.3#
215	42.4	36.7	55.1

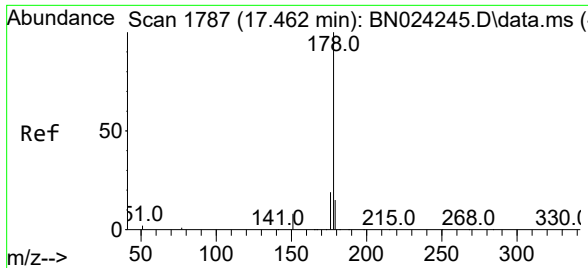


#24  
 Pentachlorophenol  
 Concen: 0.344 ng  
 RT: 17.065 min Scan# 1755  
 Delta R.T. 0.000 min  
 Lab File: BN024350.D  
 Acq: 17 Mar 2023 17:35

Tgt Ion: 266 Resp: 2179

Ion	Ratio	Lower	Upper
266	100		
264	61.4	51.1	76.7
268	64.7	52.2	78.4

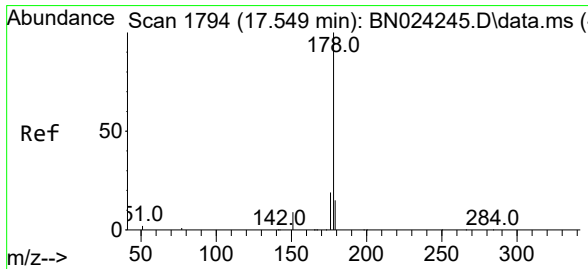
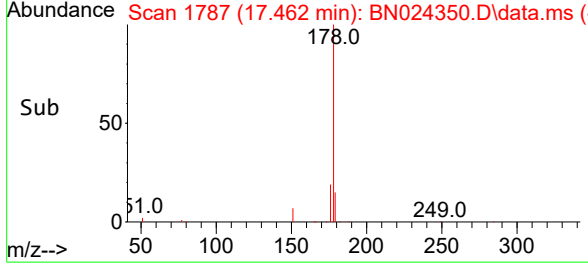
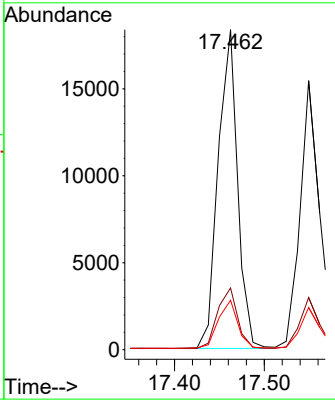
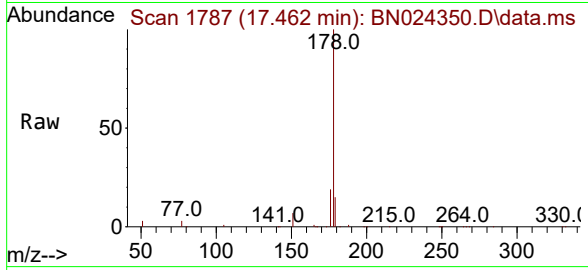




#25  
 Phenanthrene  
 Concen: 0.410 ng  
 RT: 17.462 min Scan# 1787  
 Delta R.T. 0.000 min  
 Lab File: BN024350.D  
 Acq: 17 Mar 2023 17:35

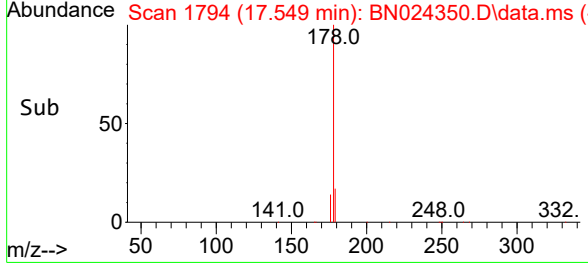
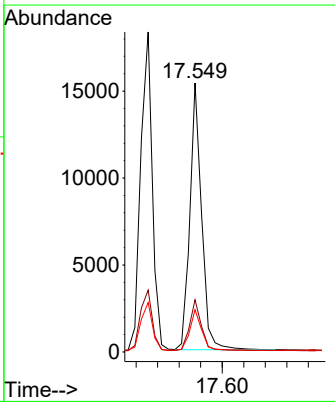
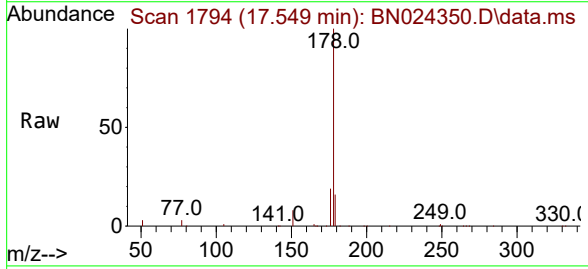
Instrument : BNA\_N  
 Client Sample Id : PB151378BS

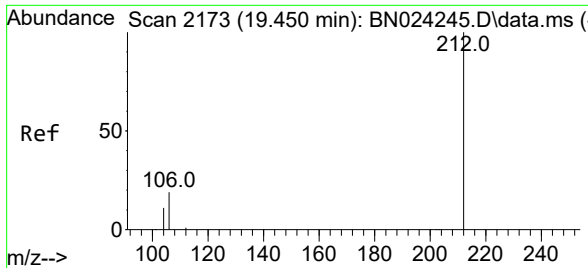
Tgt Ion	Resp	Lower	Upper
178	100		
176	19.5	15.4	23.0
179	15.1	12.2	18.2



#26  
 Anthracene  
 Concen: 0.374 ng  
 RT: 17.549 min Scan# 1794  
 Delta R.T. 0.000 min  
 Lab File: BN024350.D  
 Acq: 17 Mar 2023 17:35

Tgt Ion	Resp	Lower	Upper
178	100		
176	19.1	15.1	22.7
179	15.5	12.1	18.1



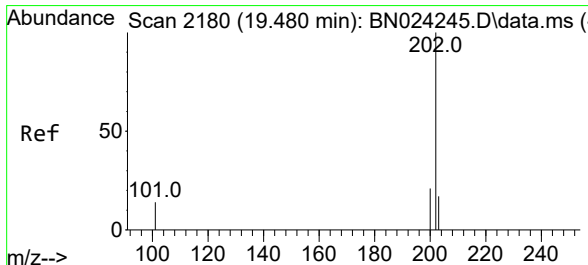
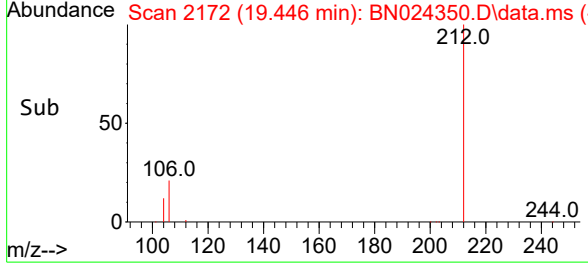
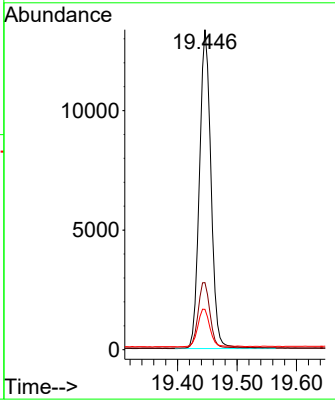
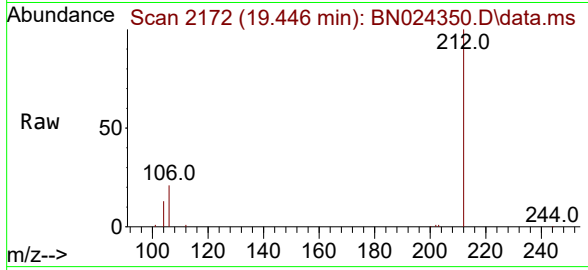


#27  
 Fluoranthene-d10  
 Concen: 0.372 ng  
 RT: 19.446 min Scan# 2172  
 Delta R.T. 0.000 min  
 Lab File: BN024350.D  
 Acq: 17 Mar 2023 17:35

Instrument : BNA\_N  
 ClientSampleId : PB151378BS

Tgt Ion:212 Resp: 17927

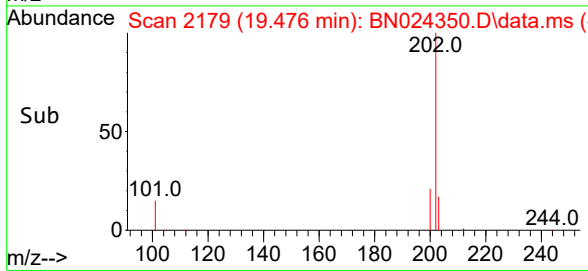
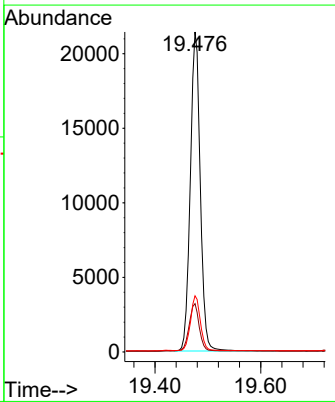
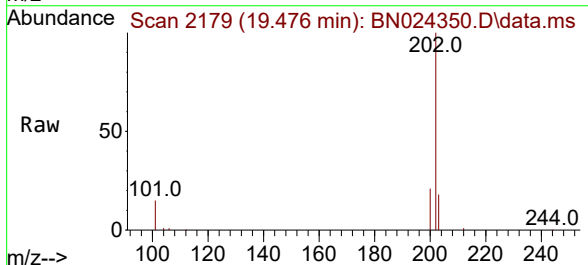
Ion	Ratio	Lower	Upper
212	100		
106	21.2	15.4	23.2
104	12.3	8.6	13.0



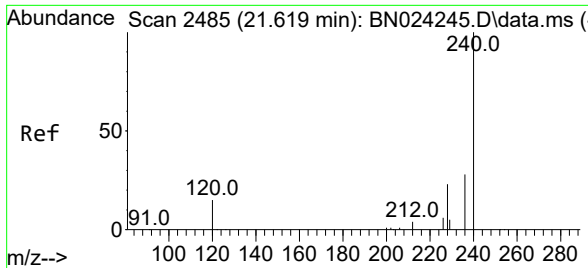
#28  
 Fluoranthene  
 Concen: 0.381 ng  
 RT: 19.476 min Scan# 2179  
 Delta R.T. 0.000 min  
 Lab File: BN024350.D  
 Acq: 17 Mar 2023 17:35

Tgt Ion:202 Resp: 28076

Ion	Ratio	Lower	Upper
202	100		
101	15.2	11.3	16.9
203	17.1	13.6	20.4



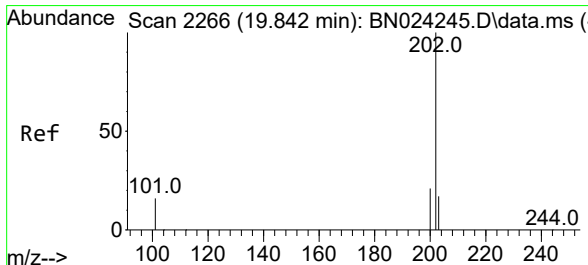
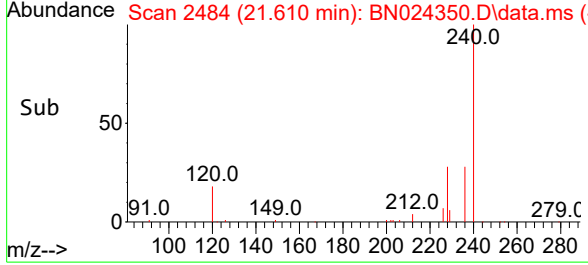
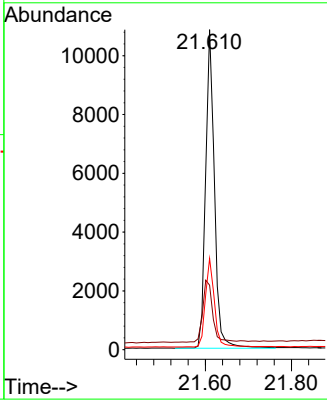
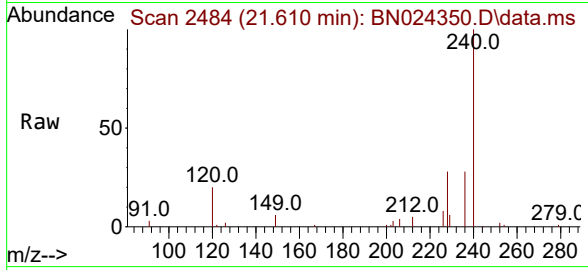




#29  
 Chrysene-d12  
 Concen: 0.400 ng  
 RT: 21.610 min Scan# 2484  
 Delta R.T. 0.009 min  
 Lab File: BN024350.D  
 Acq: 17 Mar 2023 17:35

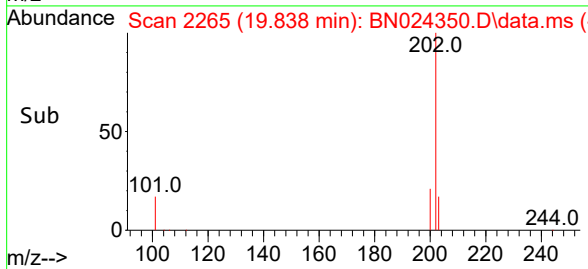
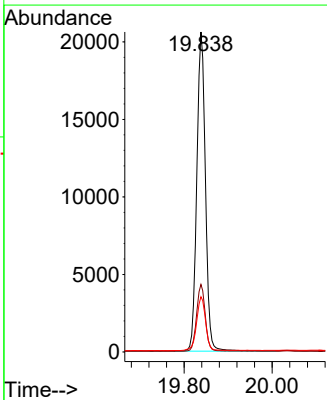
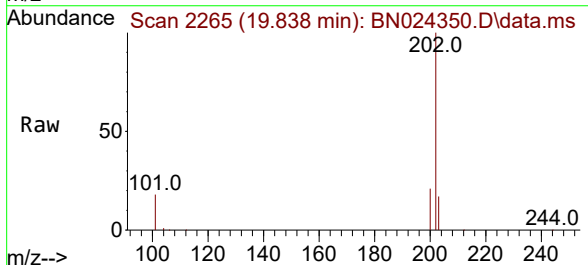
Instrument : BNA\_N  
 ClientSampleId : PB151378BS

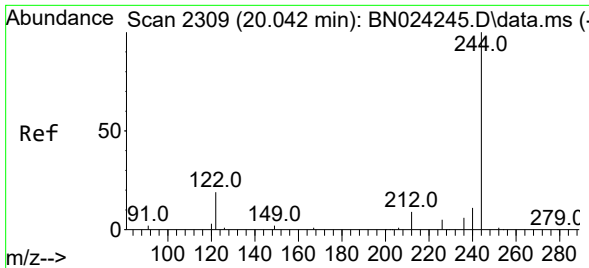
Tgt Ion	Resp	Lower	Upper
240	15501		
120	20.1	12.8	19.2#
236	28.5	22.5	33.7



#30  
 Pyrene  
 Concen: 0.444 ng  
 RT: 19.838 min Scan# 2265  
 Delta R.T. 0.000 min  
 Lab File: BN024350.D  
 Acq: 17 Mar 2023 17:35

Tgt Ion	Resp	Lower	Upper
202	27899		
200	21.0	17.0	25.4
203	17.4	14.2	21.2

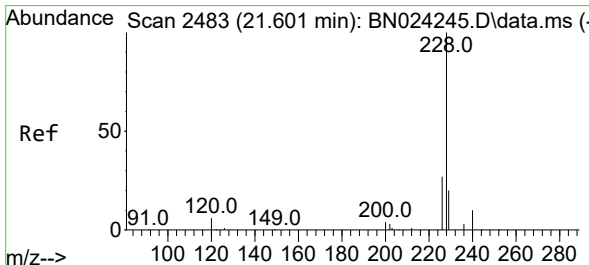
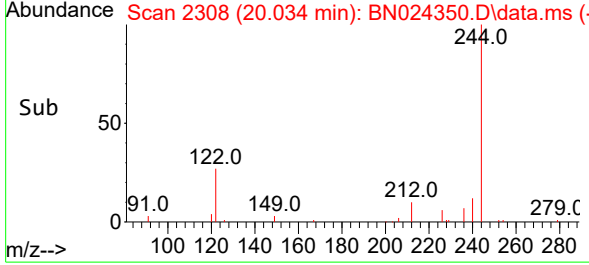
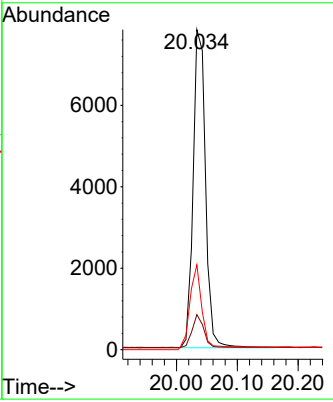
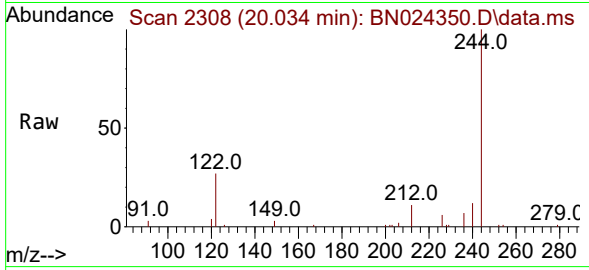




#31  
 Terphenyl-d14  
 Concen: 0.390 ng  
 RT: 20.034 min Scan# 21  
 Delta R.T. 0.000 min  
 Lab File: BN024350.D  
 Acq: 17 Mar 2023 17:35

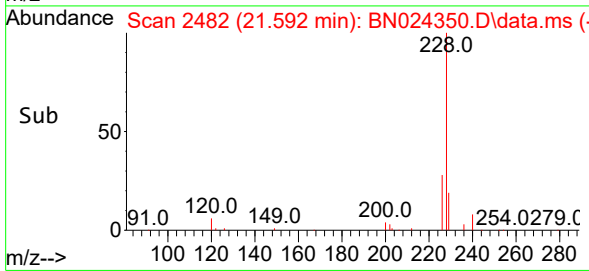
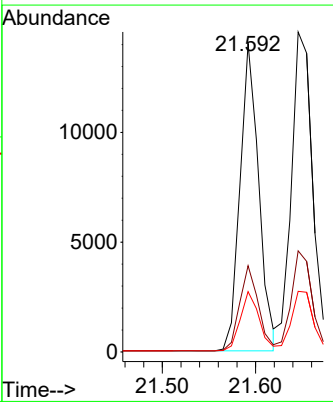
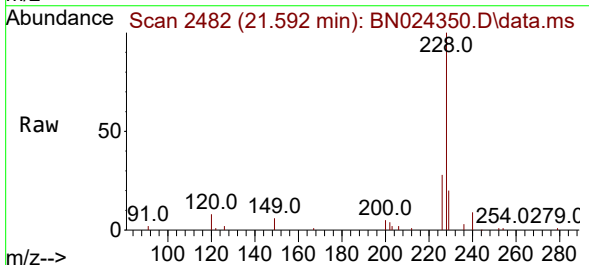
Instrument : BNA\_N  
 ClientSampleId : PB151378BS

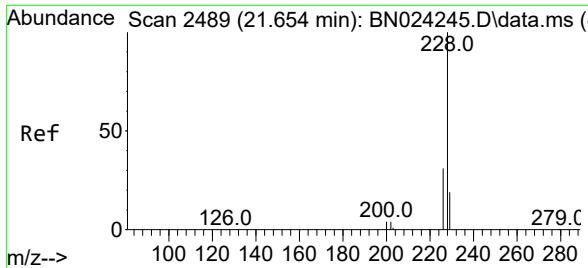
Tgt Ion	Resp	Lower	Upper
244	10202		
212	11.0	7.6	11.4
122	26.5	15.1	22.7#



#32  
 Benzo(a)anthracene  
 Concen: 0.378 ng  
 RT: 21.592 min Scan# 2482  
 Delta R.T. 0.009 min  
 Lab File: BN024350.D  
 Acq: 17 Mar 2023 17:35

Tgt Ion	Resp	Lower	Upper
228	19576		
226	28.0	22.2	33.2
229	19.6	15.9	23.9



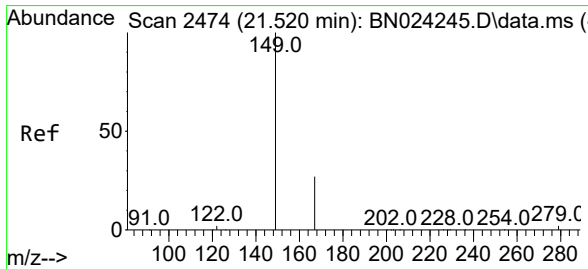
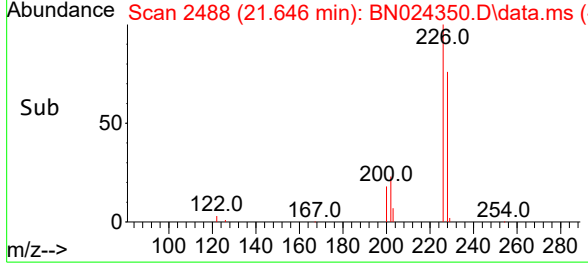
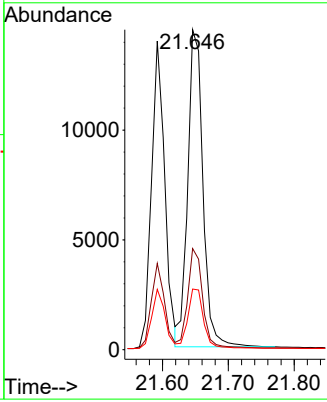
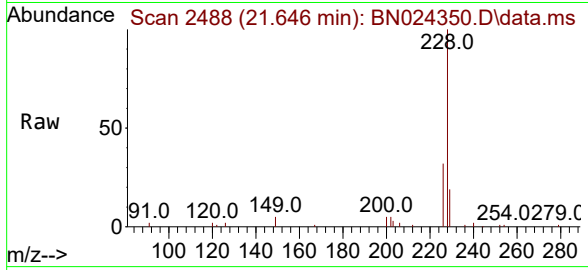


#33  
 Chrysene  
 Concen: 0.418 ng  
 RT: 21.646 min Scan# 2488  
 Delta R.T. 0.000 min  
 Lab File: BN024350.D  
 Acq: 17 Mar 2023 17:35

Instrument : BNA\_N  
 Client Sample Id : PB151378BS

Tgt Ion: 228 Resp: 23112

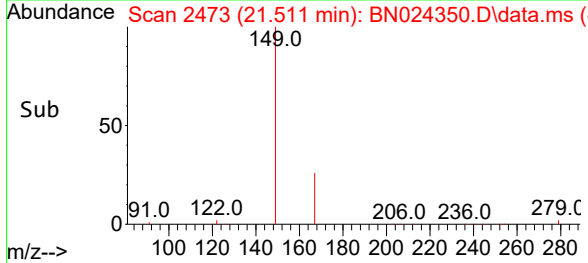
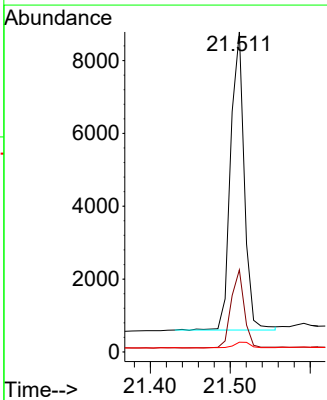
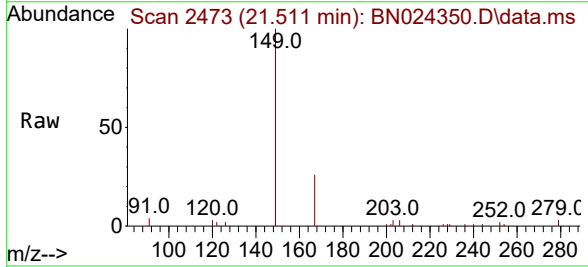
Ion	Ratio	Lower	Upper
228	100		
226	31.6	24.5	36.7
229	19.0	15.5	23.3

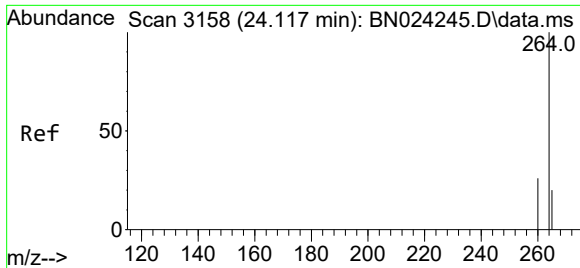


#34  
 Bis(2-ethylhexyl)phthalate  
 Concen: 0.399 ng  
 RT: 21.511 min Scan# 2473  
 Delta R.T. 0.009 min  
 Lab File: BN024350.D  
 Acq: 17 Mar 2023 17:35

Tgt Ion: 149 Resp: 9722

Ion	Ratio	Lower	Upper
149	100		
167	25.4	21.2	31.8
279	2.4	1.8	2.8



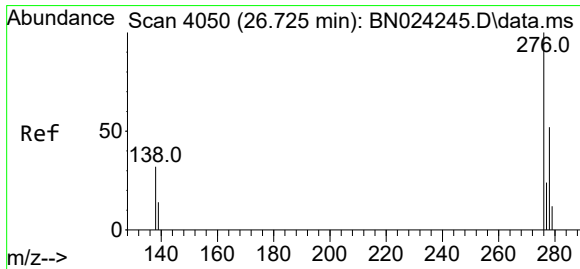
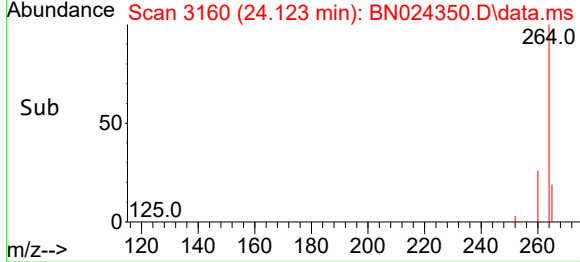
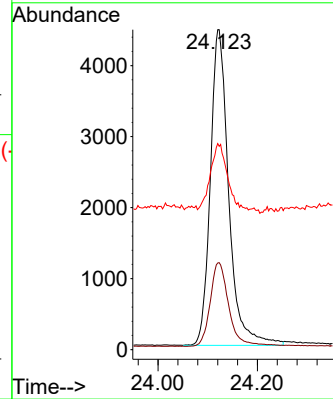
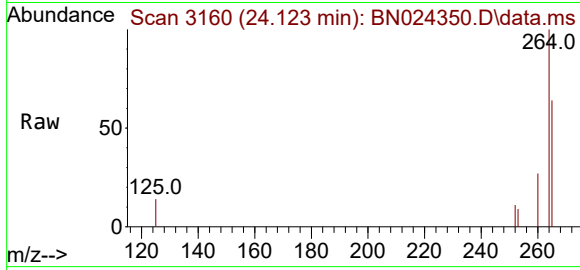


#35  
 Perylene-d12  
 Concen: 0.400 ng  
 RT: 24.123 min Scan# 3158  
 Delta R.T. 0.009 min  
 Lab File: BN024350.D  
 Acq: 17 Mar 2023 17:35

Instrument : BNA\_N  
 ClientSampleId : PB151378BS

Tgt Ion:264 Resp: 11413

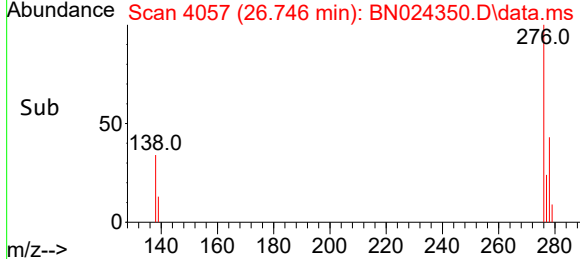
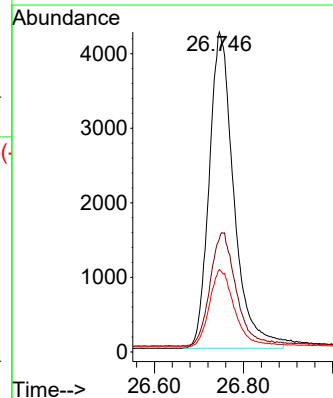
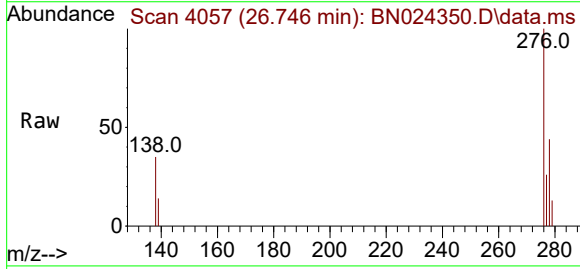
Ion	Ratio	Lower	Upper
264	100		
260	27.2	21.4	32.2
265	63.5	35.7	53.5

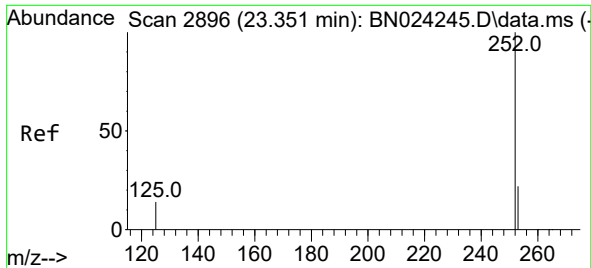


#36  
 Indeno(1,2,3-cd)pyrene  
 Concen: 0.382 ng  
 RT: 26.746 min Scan# 4057  
 Delta R.T. 0.006 min  
 Lab File: BN024350.D  
 Acq: 17 Mar 2023 17:35

Tgt Ion:276 Resp: 16337

Ion	Ratio	Lower	Upper
276	100		
138	37.3	27.4	41.2
277	24.9	19.8	29.6

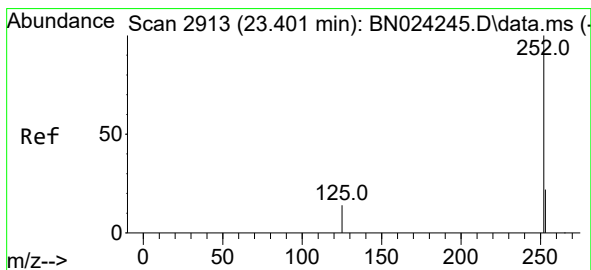
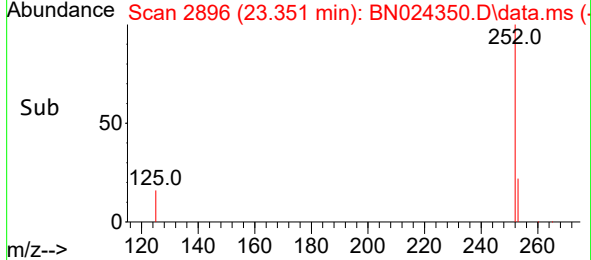
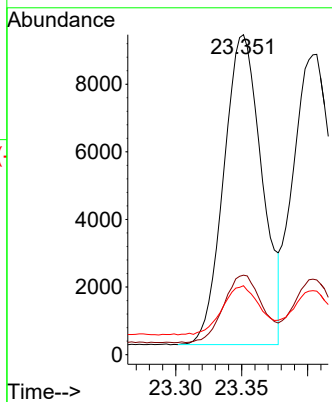
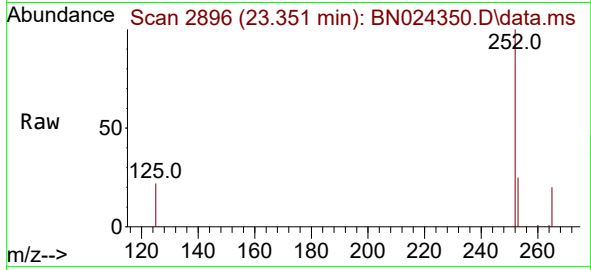




#37  
 Benzo(b)fluoranthene  
 Concen: 0.415 ng  
 RT: 23.351 min Scan# 21  
 Delta R.T. 0.009 min  
 Lab File: BN024350.D  
 Acq: 17 Mar 2023 17:35

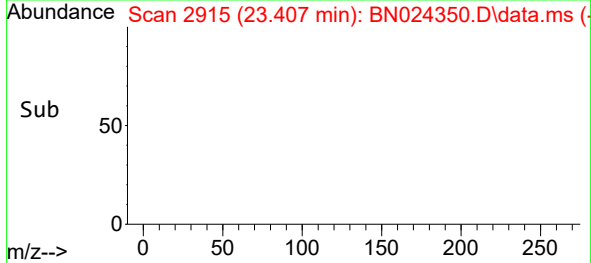
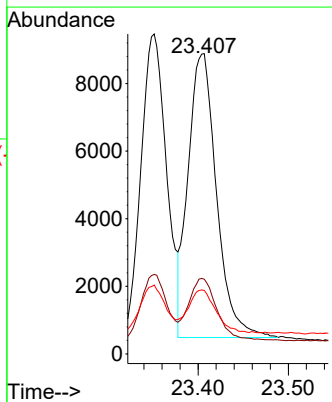
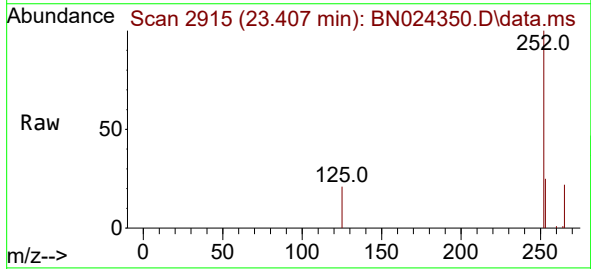
Instrument : BNA\_N  
 ClientSampleId : PB151378BS

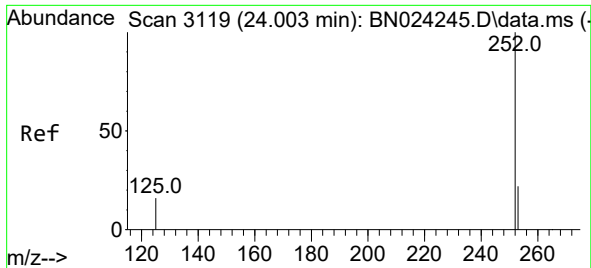
Tgt Ion	Resp	Lower	Upper
252	18442		
253	24.8	18.9	28.3
125	21.6	13.8	20.6



#38  
 Benzo(k)fluoranthene  
 Concen: 0.401 ng  
 RT: 23.407 min Scan# 2915  
 Delta R.T. 0.012 min  
 Lab File: BN024350.D  
 Acq: 17 Mar 2023 17:35

Tgt Ion	Resp	Lower	Upper
252	18352		
253	24.9	19.0	28.6
125	21.2	13.5	20.3

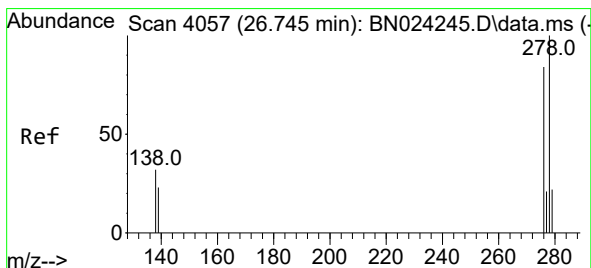
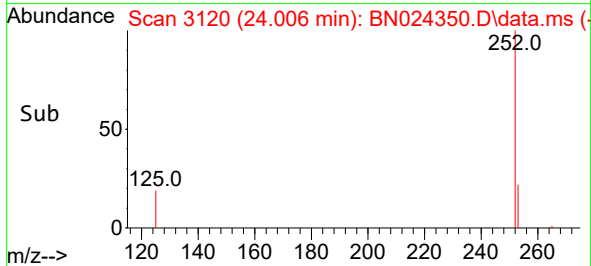
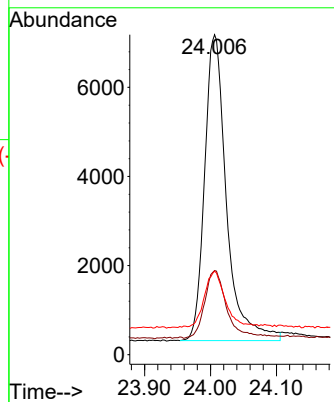
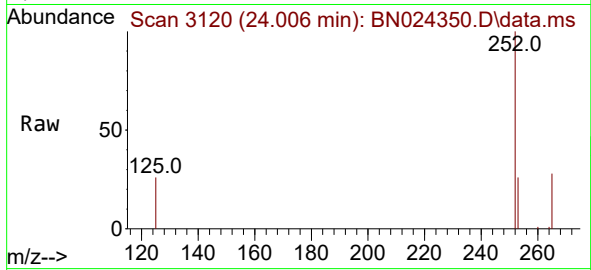




#39  
 Benzo(a)pyrene  
 Concen: 0.390 ng  
 RT: 24.006 min Scan# 3119  
 Delta R.T. 0.009 min  
 Lab File: BN024350.D  
 Acq: 17 Mar 2023 17:35

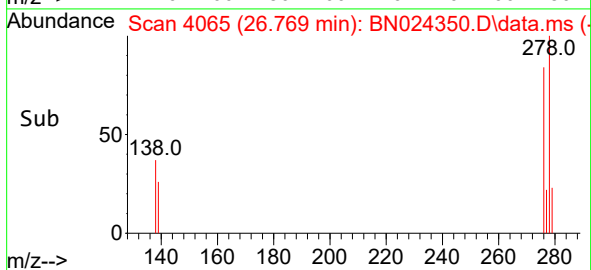
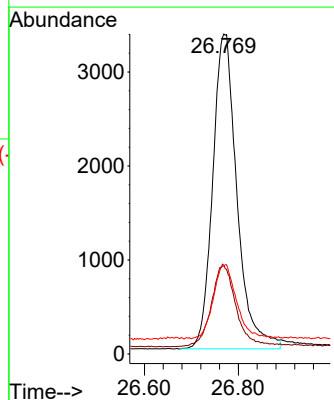
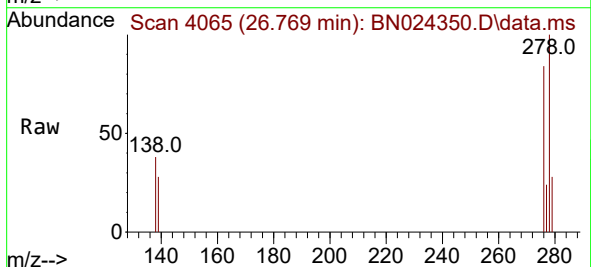
Instrument :  
 BNA\_N  
 ClientSampleId :  
 PB151378BS

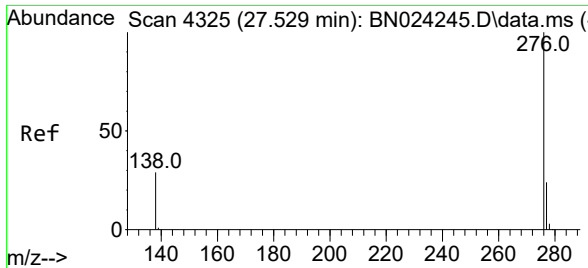
Tgt Ion:252 Resp: 15863  
 Ion Ratio Lower Upper  
 252 100  
 253 26.3 19.5 29.3  
 125 26.1 16.2 24.4#



#40  
 Dibenzo(a,h)anthracene  
 Concen: 0.363 ng  
 RT: 26.769 min Scan# 4065  
 Delta R.T. 0.009 min  
 Lab File: BN024350.D  
 Acq: 17 Mar 2023 17:35

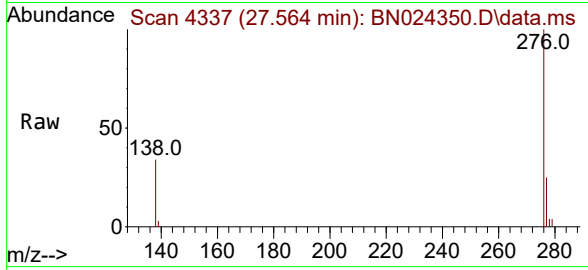
Tgt Ion:278 Resp: 12016  
 Ion Ratio Lower Upper  
 278 100  
 139 27.7 19.4 29.0  
 279 27.5 20.7 31.1





#41  
 Benzo(g,h,i)perylene  
 Concen: 0.398 ng  
 RT: 27.564 min Scan# 41  
 Delta R.T. 0.009 min  
 Lab File: BN024350.D  
 Acq: 17 Mar 2023 17:35

Instrument :  
 BNA\_N  
 ClientSampleId :  
 PB151378BS



Tgt Ion: 276 Resp: 15383

Ion	Ratio	Lower	Upper
276	100		
277	24.7	19.9	29.9
138	33.7	24.5	36.7

