

Data Path : Z:\SVOASRV\HPCHEM1\BNA_N\DATA\BN040119\
 Data File : BN005042.D
 Acq On : 01 Apr 2019 11:08
 Operator : JU/SJ
 Sample : K1560-09
 Misc : MDL 01 PPM
 ALS Vial : 4 Sample Multiplier: 1

Instrument :
 BNA_N
ClientSampled :
 MDL-MDL-WATER-03-QT1-2019

Manual Integrations
APPROVED
 Sohil
 4/2/2019 5:33:21 PM

Quant Time: Apr 01 12:22:02 2019
 Quant Method : Z:\SVOASRV\HPCHEM1\BNA_N\METHODS\8270-SIM-BN032819.M
 Quant Title : ASP BNA STANDARDS FOR 5 POINT CALIBRATION
 QLast Update : Fri Mar 29 03:42:17 2019
 Response via : Initial Calibration

Internal Standards	R.T.	QIon	Response	Conc	Units	Dev(Min)
1) 1,4-Dichlorobenzene-d4	7.66	152	2839	0.40	ng	0.00
7) Naphthalene-d8	10.44	136	11814	0.40	ng	0.00
13) Acenaphthene-d10	14.31	164	6652	0.40	ng	0.01
19) Phenanthrene-d10	17.06	188	15576	0.40	ng	0.00
27) Chrysene-d12	21.27	240	15528	0.40	ng	0.01
34) Perylene-d12	23.50	264	14725	0.40	ng	0.00

System Monitoring Compounds	R.T.	QIon	Response	Conc	Units	Dev(Min)
4) 2-Fluorophenol	5.26	112	2721	0.38	ng	0.00
5) Phenol-d6	6.85	99	3070	0.37	ng	0.00
8) Nitrobenzene-d5	8.84	82	2274	0.33	ng	0.01
11) 2-Methylnaphthalene-d10	12.05	152	6495	0.35	ng	0.00
14) 2,4,6-Tribromophenol	15.83	330	1119	0.30	ng	0.01
15) 2-Fluorobiphenyl	12.93	172	10157	0.40	ng	0.01
25) Fluoranthene-d10	19.10	212	15286	0.34	ng	0.00
29) Terphenyl-d14	19.70	244	14497	0.45	ng	0.00

Target Compounds	R.T.	QIon	Response	Conc	Units	Qvalue
2) 1,4-Dioxane	3.19	88	328	0.107	ng	94
3) n-Nitrosodimethylamine	3.56	42	65	0.035	ng	# 1
6) bis(2-Chloroethyl)ether	7.10	93	747	0.094	ng	91
9) Naphthalene	10.49	128	2943	0.099	ng	# 92
10) Hexachlorobutadiene	10.76	225	561	0.102	ng	# 100
12) 2-Methylnaphthalene	12.12	142	2005	0.094	ng	98
16) Acenaphthylene	14.03	152	2711	0.086	ng	99
17) Acenaphthene	14.37	154	1967	0.099	ng	99
18) Fluorene	15.37	166	2526	0.094	ng	100
20) 4-Bromophenyl-phenylether	16.26	248	828	0.093	ng	96
21) Hexachlorobenzene	16.36	284	982	0.100	ng	98
22) Pentachlorophenol	16.78	266	36	0.108	ng	# 69
23) Phenanthrene	17.11	178	4156	0.095	ng	99
24) Anthracene	17.21	178	3329	0.086	ng	99
26) Fluoranthene	19.13	202	4774	0.089	ng	100
28) Pyrene	19.50	202	4794	0.109	ng	100
30) Benzo(a)anthracene	21.25	228	4007	0.092	ng	97
31) Chrysene	21.30	228	4812	0.102	ng	98
32) Bis(2-ethylhexyl)phthalate	21.15	149	2252	0.123	ng	99
33) Indeno(1,2,3-cd)pyrene	25.77	276	4969	0.094	ng	98
35) Benzo(b)fluoranthene	22.83	252	4419	0.094	ng	# 86
36) Benzo(k)fluoranthene	22.87	252	4956m	0.109	ng	
37) Benzo(a)pyrene	23.41	252	3930	0.094	ng	# 76
38) Dibenzo(a,h)anthracene	25.77	278	3932	0.094	ng	# 85
39) Benzo(g,h,i)perylene	26.46	276	4270	0.101	ng	# 92

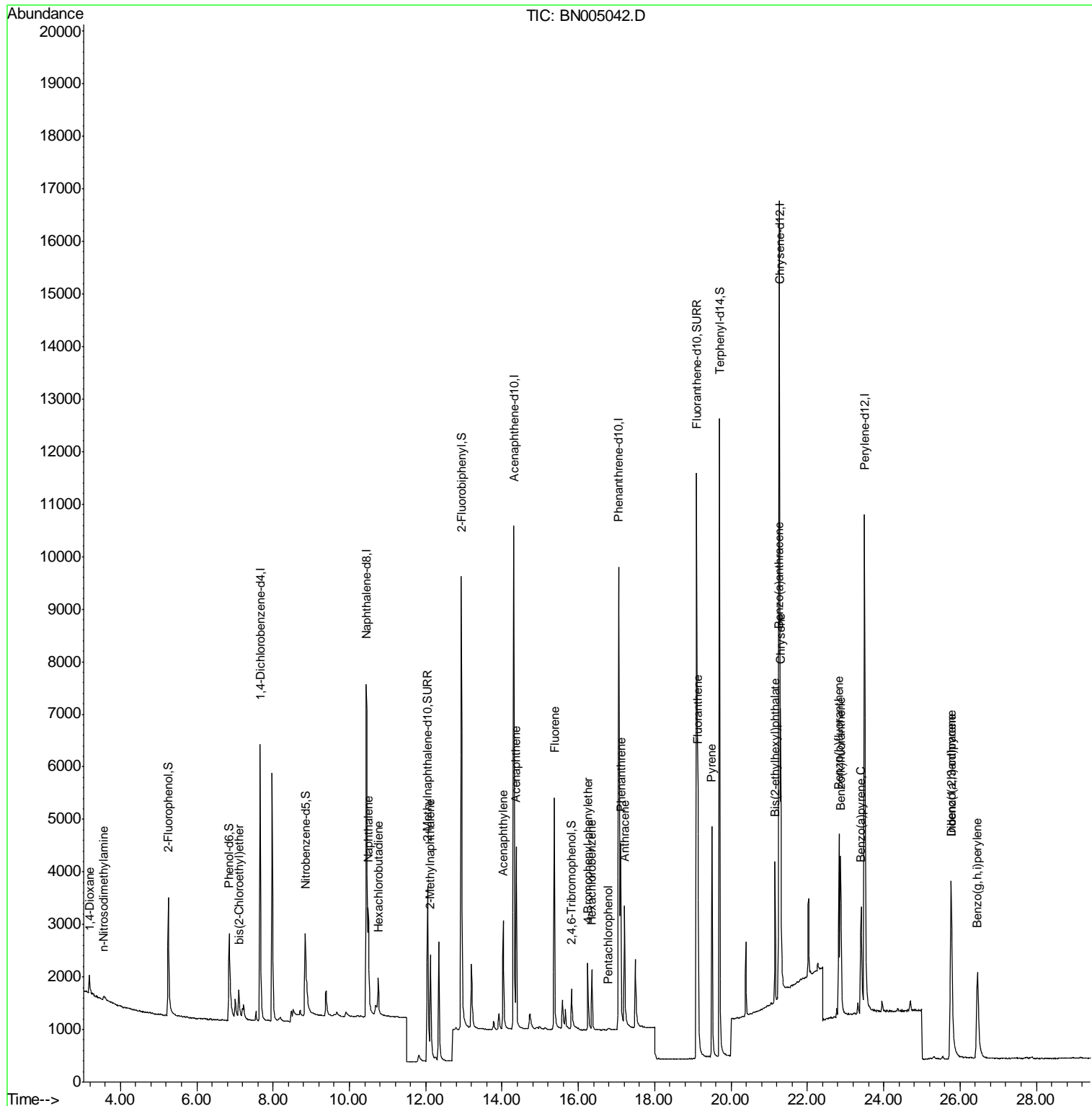
(#) = qualifier out of range (m) = manual integration (+) = signals summed

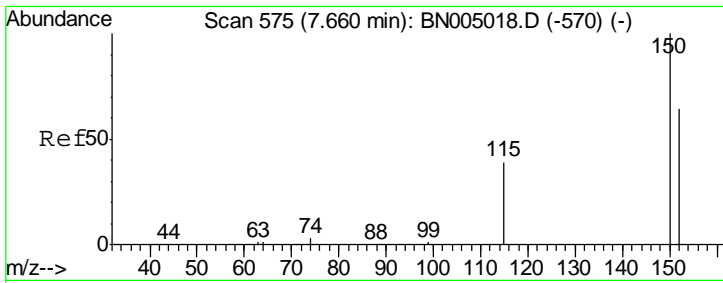
Data Path : Z:\SVOASRV\HPCHEM1\BNA_N\DATA\BN040119\
 Data File : BN005042.D
 Acq On : 01 Apr 2019 11:08
 Operator : JU/SJ
 Sample : K1560-09
 Misc : MDL 01 PPM
 ALS Vial : 4 Sample Multiplier: 1

Instrument :
 BNA_N
 Client Sampled :
 MDL-MDL-WATER-03-QT1-2019

Manual Integrations
 APPROVED
 Sohil
 4/2/2019 5:33:21 PM

Quant Time: Apr 01 12:22:02 2019
 Quant Method : Z:\SVOASRV\HPCHEM1\BNA_N\METHODS\8270-SIM-BN032819.M
 Quant Title : ASP BNA STANDARDS FOR 5 POINT CALIBRATION
 QLast Update : Fri Mar 29 03:42:17 2019
 Response via : Initial Calibration



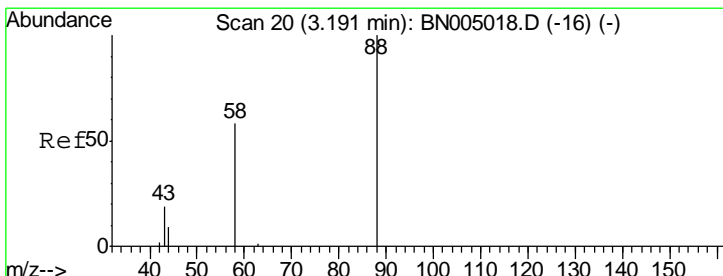
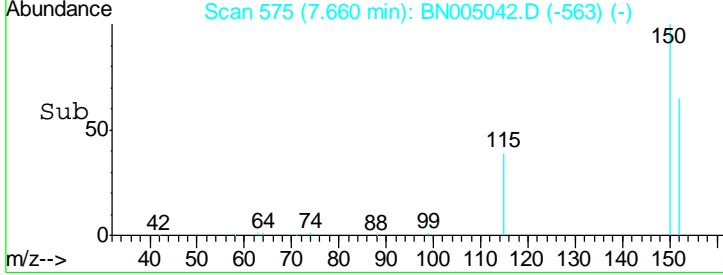
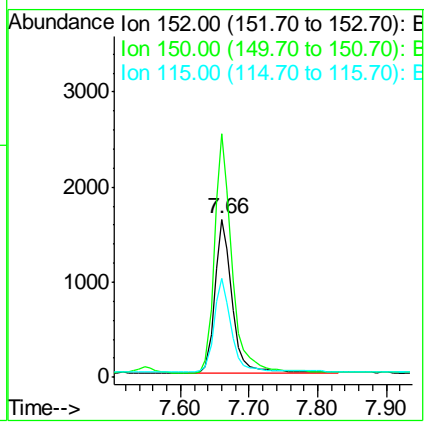
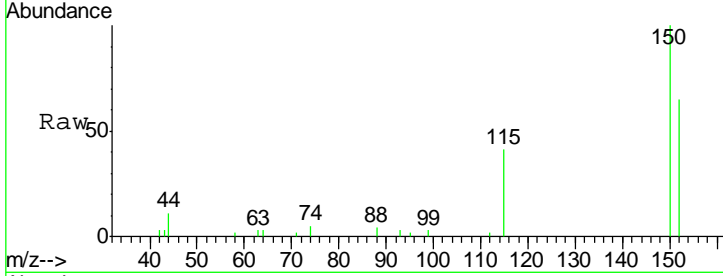


#1
 1,4-Dichlorobenzene-d4
 Concen: 0.400 ng
 RT: 7.66 min Scan# 575
 Delta R.T. 0.00 min
 Lab File: BN005042.D
 Acq: 01 Apr 2019 11:08

Instrument :
 BNA_N
ClientSampled :
 MDL-MDL-WATER-03-QT1-2019

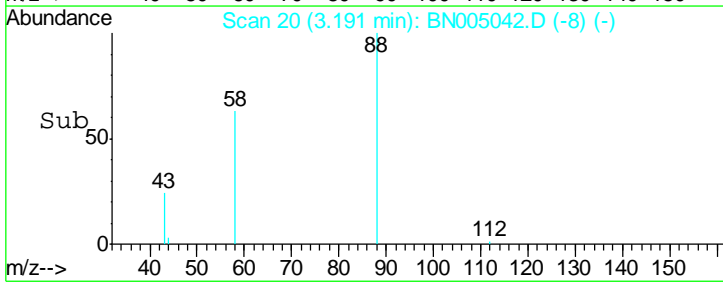
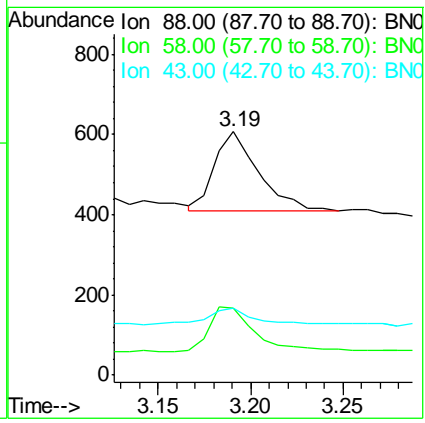
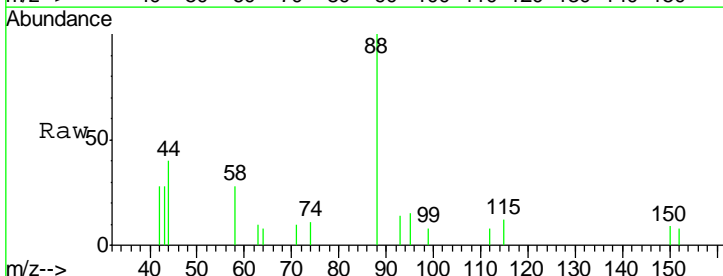
Tgt Ion	Resp	Lower	Upper
152	2839		
152	100		
150	154.1	123.4	185.2
115	62.7	50.0	75.0

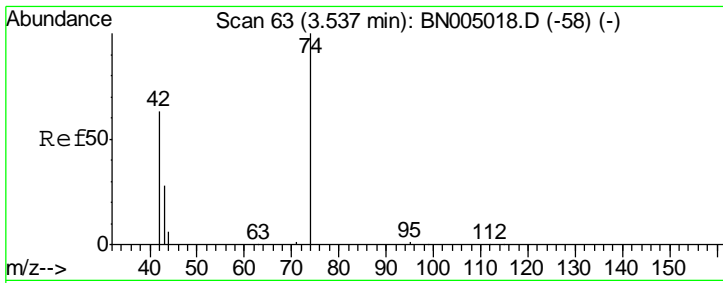
Manual Integrations
APPROVED
 Sohil
 4/2/2019 5:33:21 PM



#2
 1,4-Dioxane
 Concen: 0.107 ng
 RT: 3.19 min Scan# 20
 Delta R.T. 0.00 min
 Lab File: BN005042.D
 Acq: 01 Apr 2019 11:08

Tgt Ion	Resp	Lower	Upper
88	328		
88	100		
58	60.7	52.8	79.2
43	23.2	19.6	29.4





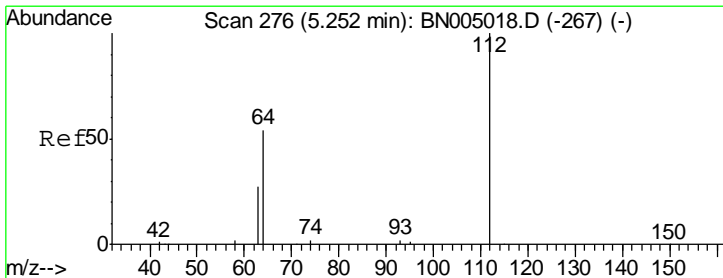
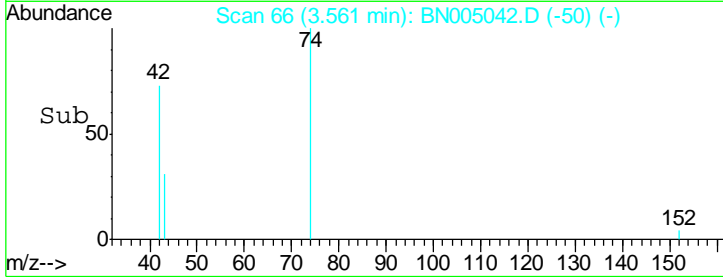
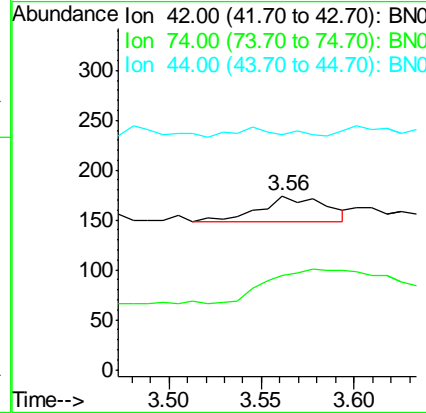
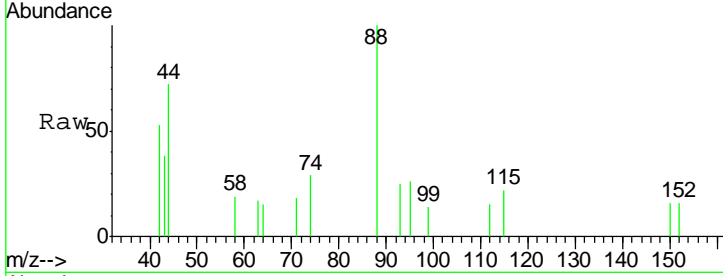
#3
 n-Nitrosodimethylamine
 Concen: 0.035 ng
 RT: 3.56 min Scan# 66
 Delta R.T. 0.03 min
 Lab File: BN005042.D
 Acq: 01 Apr 2019 11:08

Instrument :
 BNA_N
ClientSampled :
 MDL-MDL-WATER-03-QT1-2019

Tgt Ion	Resp	Lower	Upper
42	100		
74	0.0	129.1	193.7#
44	20.0	11.6	17.4#

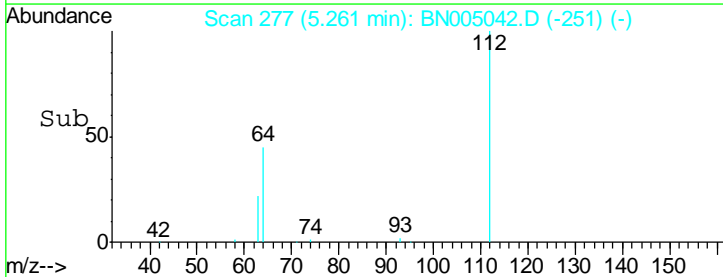
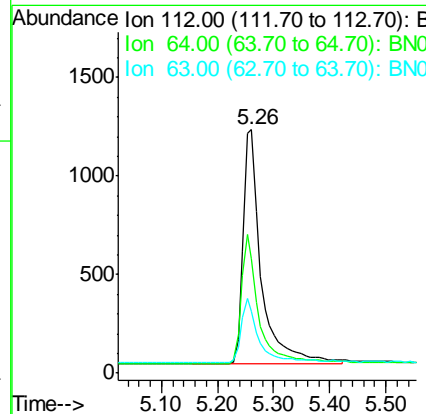
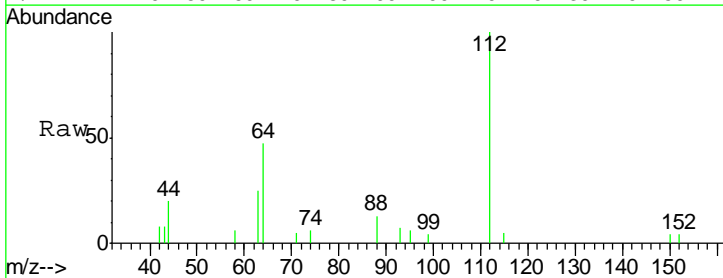
Manual Integrations
APPROVED

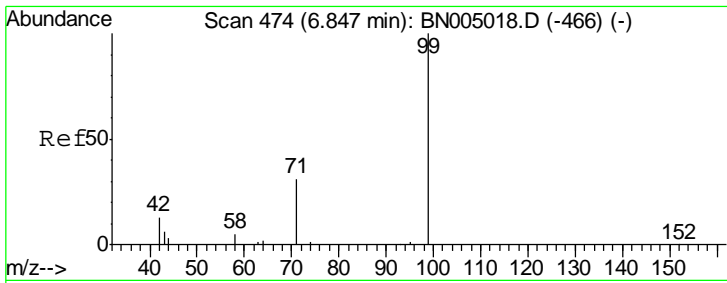
Sohil
 4/2/2019 5:33:21 PM



#4
 2-Fluorophenol
 Concen: 0.384 ng
 RT: 5.26 min Scan# 277
 Delta R.T. 0.01 min
 Lab File: BN005042.D
 Acq: 01 Apr 2019 11:08

Tgt Ion	Resp	Lower	Upper
112	100		
64	52.0	41.9	62.9
63	25.6	21.5	32.3





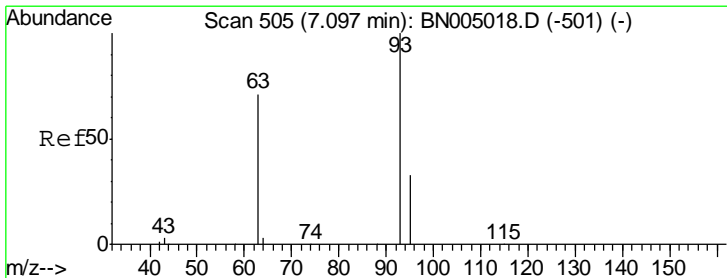
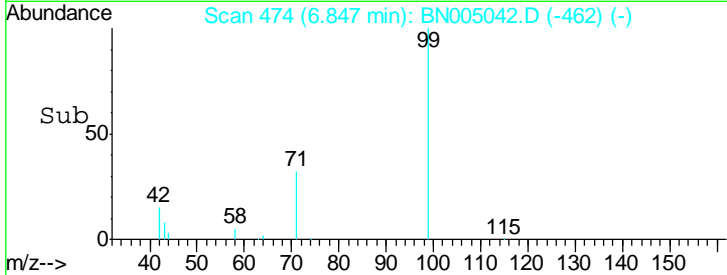
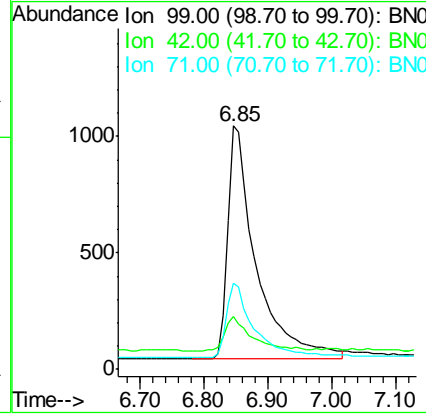
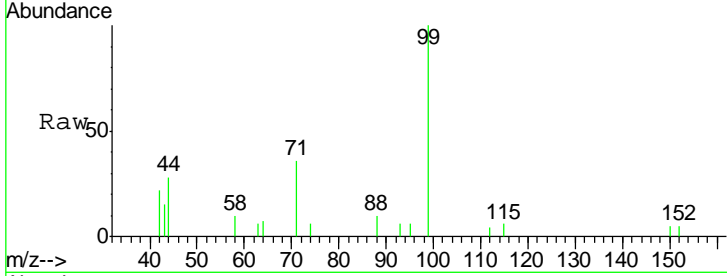
#5
 Phenol-d6
 Concen: 0.366 ng
 RT: 6.85 min Scan# 474
 Delta R.T. 0.00 min
 Lab File: BN005042.D
 Acq: 01 Apr 2019 11:08

Instrument :
 BNA_N
ClientSampled :
 MDL-MDL-WATER-03-QT1-2019

Tgt Ion	Resp	Lower	Upper
99	3070		
99	100		
42	14.7	12.2	18.2
71	31.3	26.1	39.1

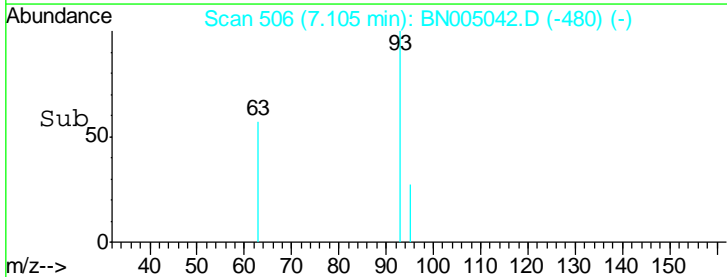
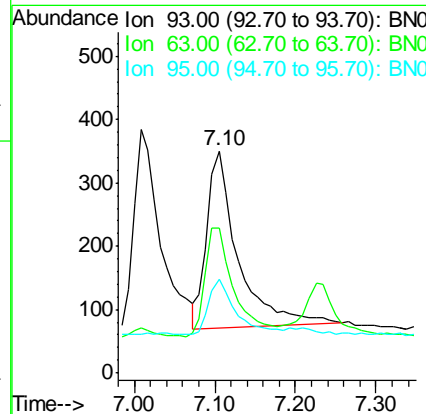
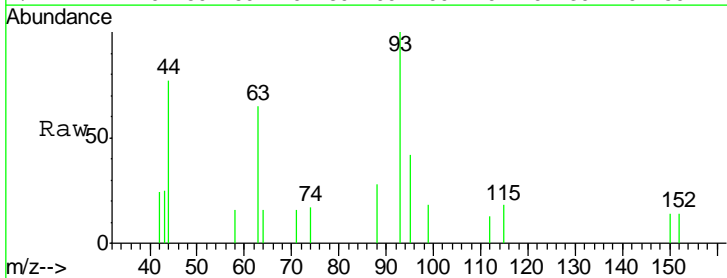
Manual Integrations
APPROVED

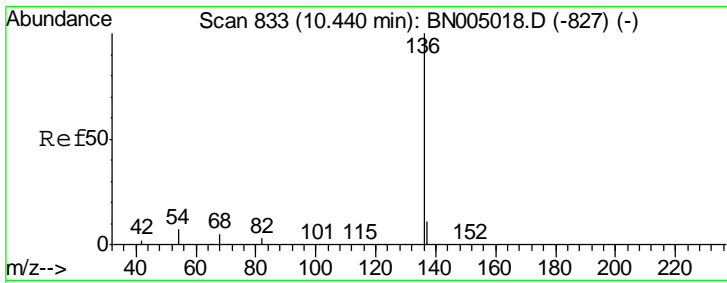
Sohil
 4/2/2019 5:33:21 PM



#6
 bis(2-Chloroethyl)ether
 Concen: 0.094 ng
 RT: 7.10 min Scan# 506
 Delta R.T. 0.01 min
 Lab File: BN005042.D
 Acq: 01 Apr 2019 11:08

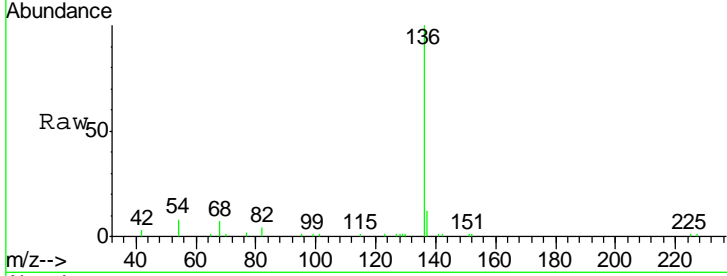
Tgt Ion	Resp	Lower	Upper
93	747		
93	100		
63	57.3	51.8	77.6
95	26.9	24.8	37.2





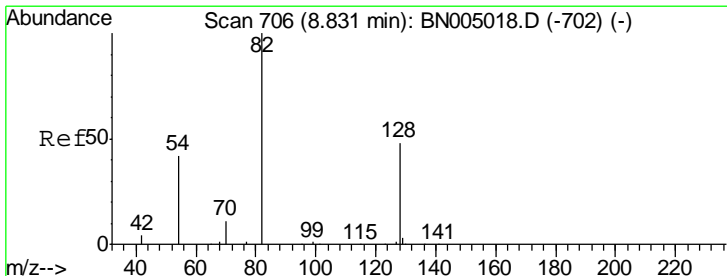
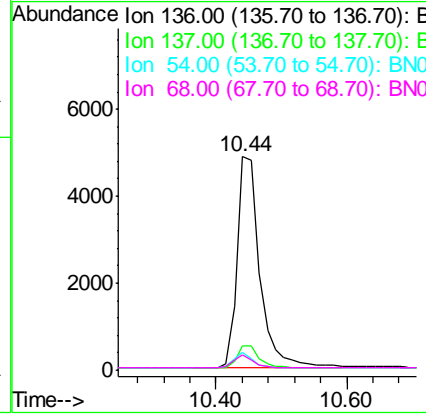
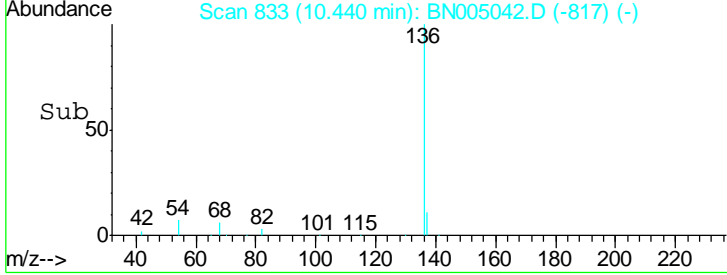
#7
 Naphthalene-d8
 Concen: 0.400 ng
 RT: 10.44 min Scan# 833
 Delta R.T. 0.00 min
 Lab File: BN005042.D
 Acq: 01 Apr 2019 11:08

Instrument :
 BNA_N
ClientSampled :
 MDL-MDL-WATER-03-QT1-2019

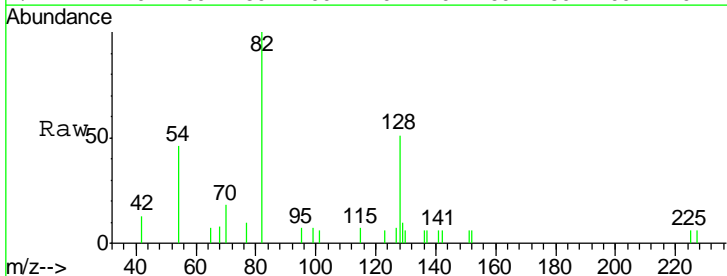


Tgt Ion	Resp	Lower	Upper
136	11814		
137	11.6	9.2	13.8
54	8.3	6.0	9.0
68	7.1	5.0	7.6

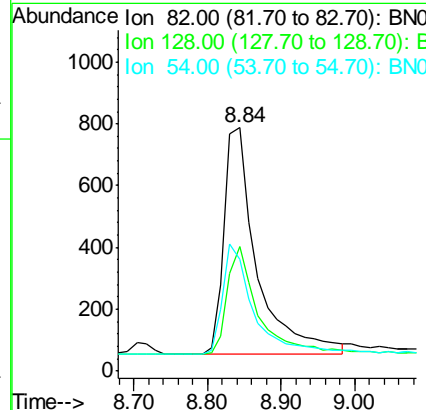
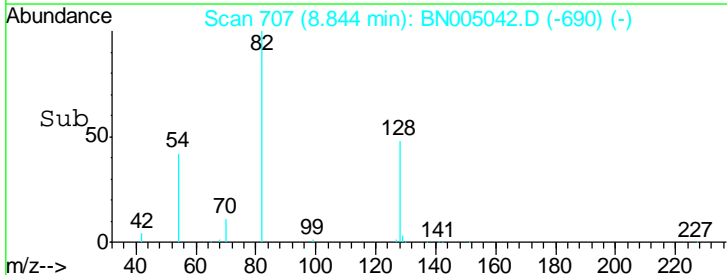
Manual Integrations
APPROVED
 Sohil
 4/2/2019 5:33:21 PM

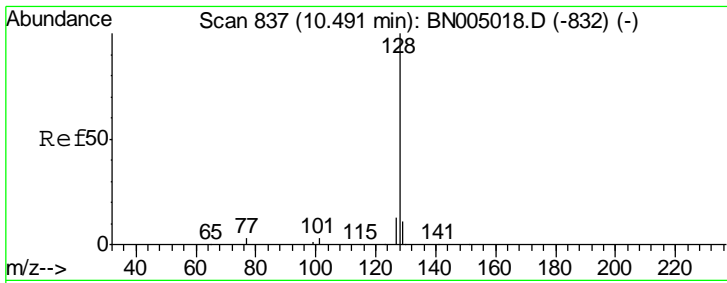


#8
 Nitrobenzene-d5
 Concen: 0.332 ng
 RT: 8.84 min Scan# 707
 Delta R.T. 0.01 min
 Lab File: BN005042.D
 Acq: 01 Apr 2019 11:08



Tgt Ion	Resp	Lower	Upper
82	2274		
128	51.3	40.5	60.7
54	46.1	35.7	53.5





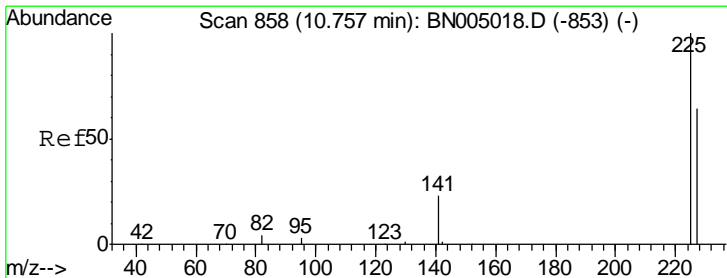
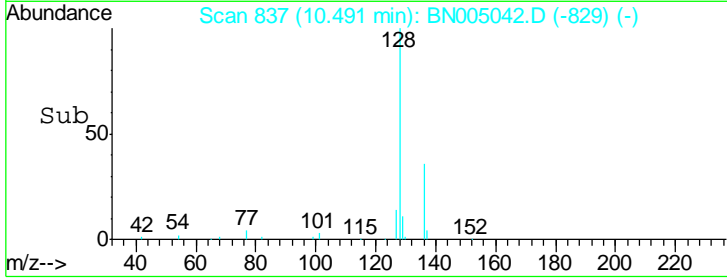
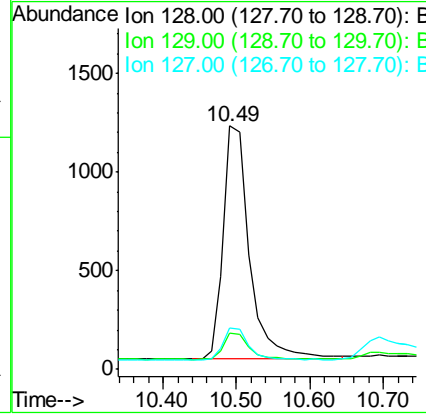
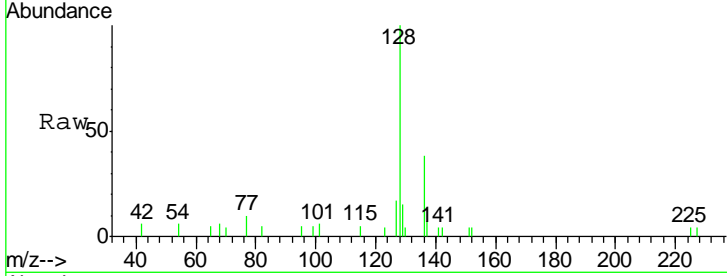
#9
 Naphthalene
 Concen: 0.099 ng
 RT: 10.49 min Scan# 837
 Delta R.T. 0.00 min
 Lab File: BN005042.D
 Acq: 01 Apr 2019 11:08

Instrument :
 BNA_N
ClientSampled :
 MDL-MDL-WATER-03-QT1-2019

Tgt Ion	Resp	Lower	Upper
128	100		
129	15.0	9.4	14.2#
127	16.9	11.0	16.6#

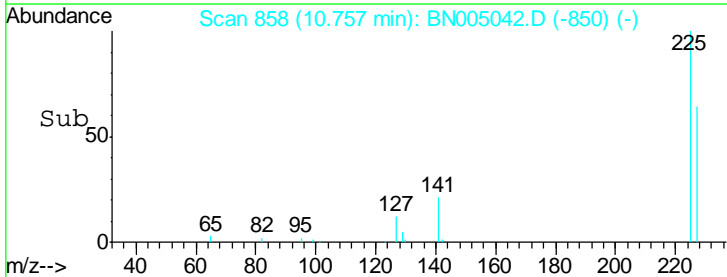
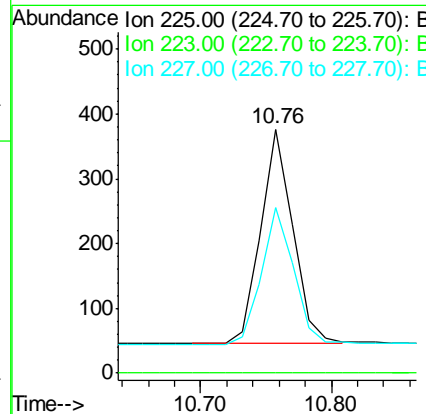
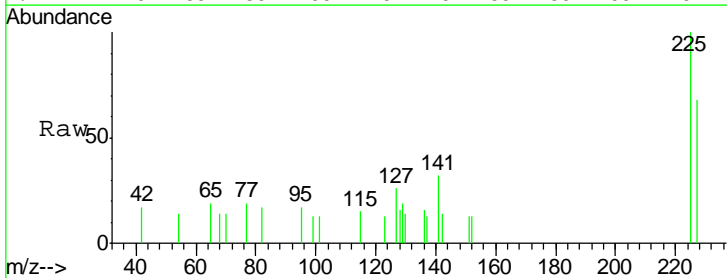
Manual Integrations
APPROVED

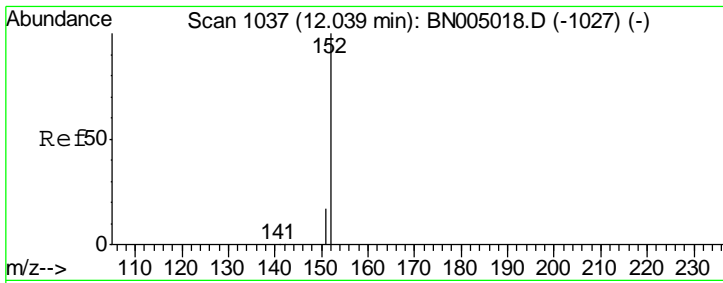
Sohil
 4/2/2019 5:33:21 PM



#10
 Hexachlorobutadiene
 Concen: 0.102 ng
 RT: 10.76 min Scan# 858
 Delta R.T. 0.00 min
 Lab File: BN005042.D
 Acq: 01 Apr 2019 11:08

Tgt Ion	Resp	Lower	Upper
225	100		
223	0.0	0.0	0.0
227	64.2	51.5	77.3





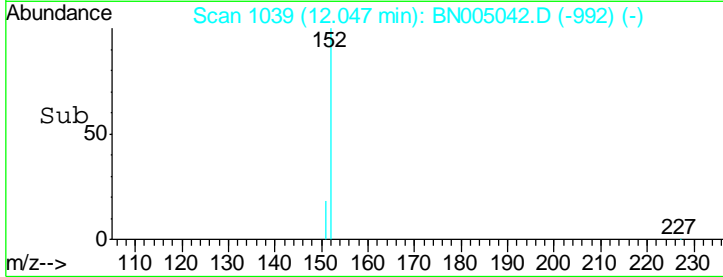
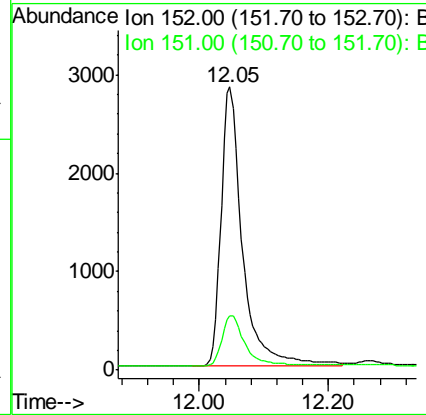
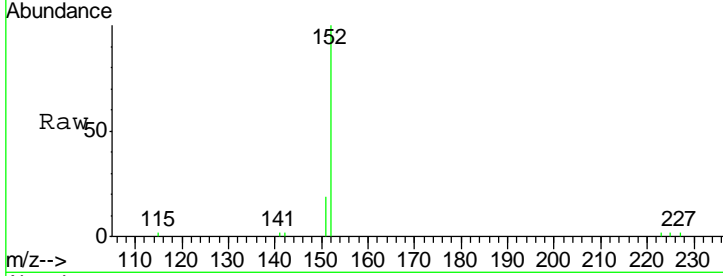
#11
 2-Methylnaphthalene-d10
 Concen: 0.355 ng
 RT: 12.05 min Scan# 1039
 Delta R.T. 0.01 min
 Lab File: BN005042.D
 Acq: 01 Apr 2019 11:08

Instrument :
 BNA_N
 ClientSampled :
 MDL-MDL-WATER-03-QT1-2019

Tgt Ion	Resp	Lower	Upper
152	100		
151	19.1	15.3	22.9

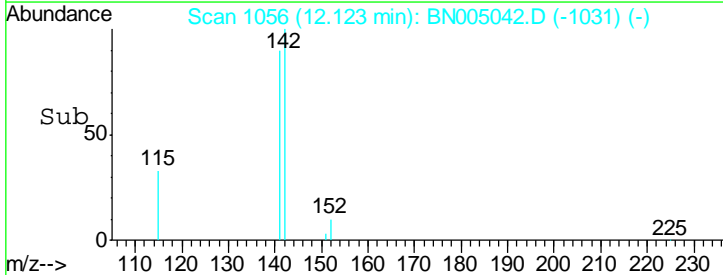
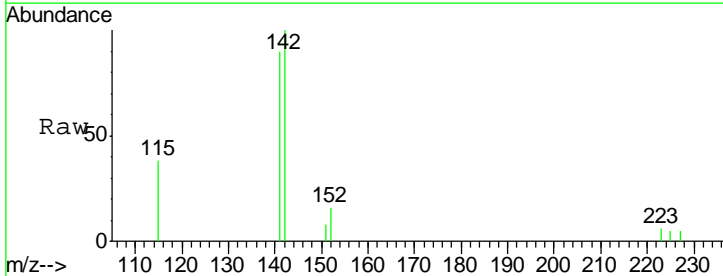
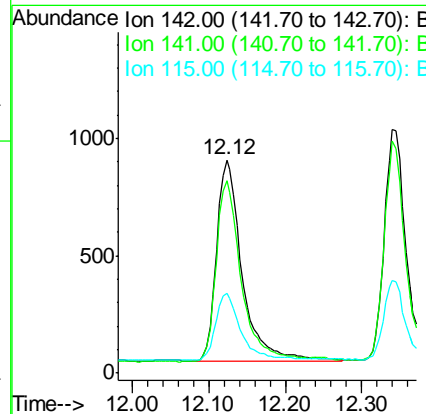
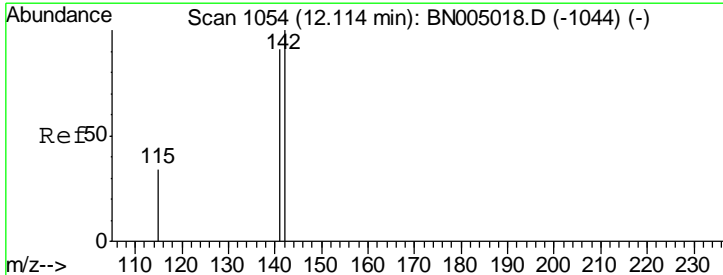
Manual Integrations
 APPROVED

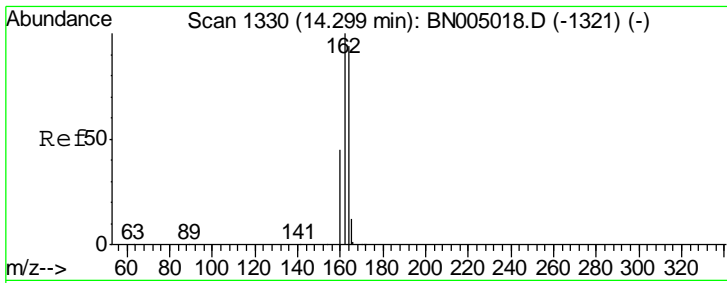
Sohil
 4/2/2019 5:33:21 PM



#12
 2-Methylnaphthalene
 Concen: 0.094 ng
 RT: 12.12 min Scan# 1056
 Delta R.T. 0.01 min
 Lab File: BN005042.D
 Acq: 01 Apr 2019 11:08

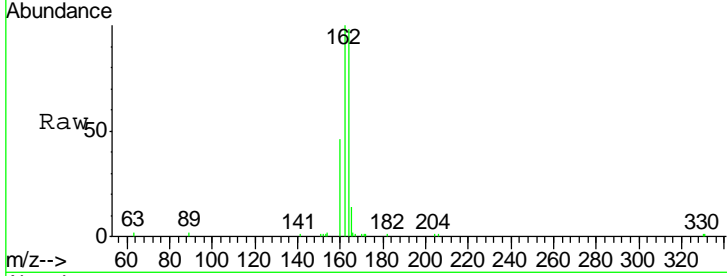
Tgt Ion	Resp	Lower	Upper
142	100		
141	90.1	72.6	108.8
115	37.7	27.8	41.8





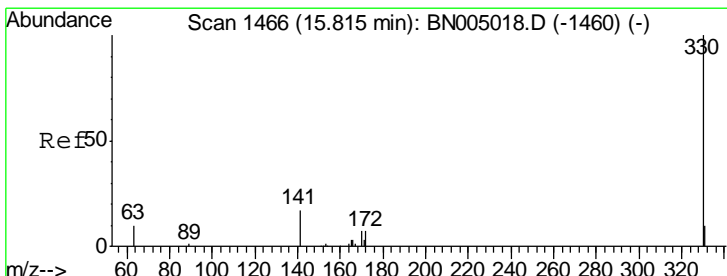
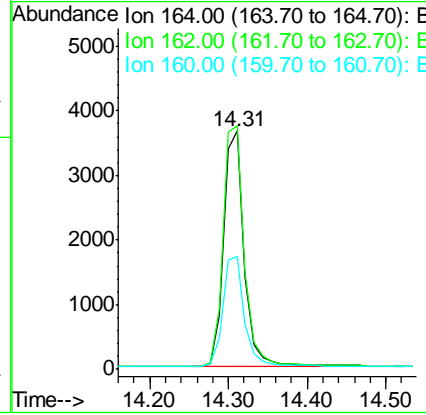
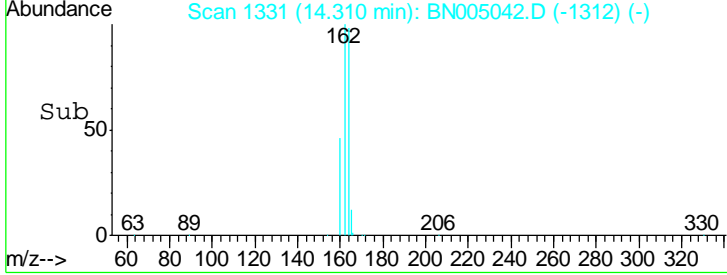
#13
 Acenaphthene-d10
 Concen: 0.400 ng
 RT: 14.31 min Scan# 1331
 Delta R.T. 0.01 min
 Lab File: BN005042.D
 Acq: 01 Apr 2019 11:08

Instrument :
 BNA_N
ClientSampled :
 MDL-MDL-WATER-03-QT1-2019

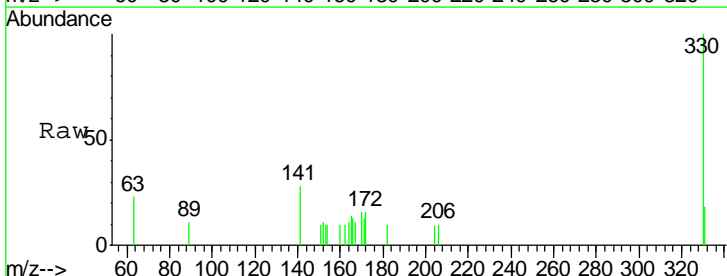


Tgt Ion	Resp	Lower	Upper
164	100		
162	102.2	85.3	127.9
160	47.2	39.2	58.8

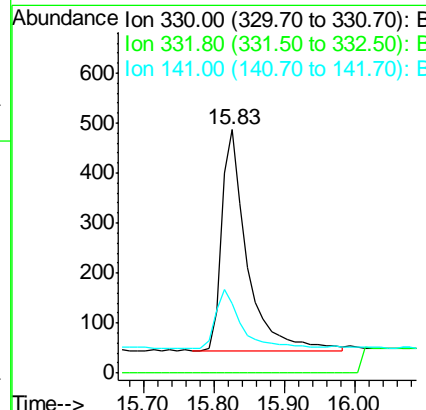
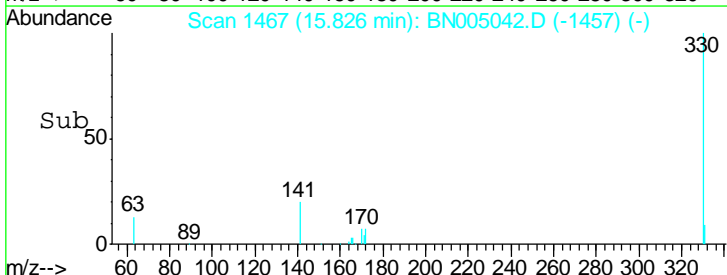
Manual Integrations
APPROVED
 Sohil
 4/2/2019 5:33:21 PM

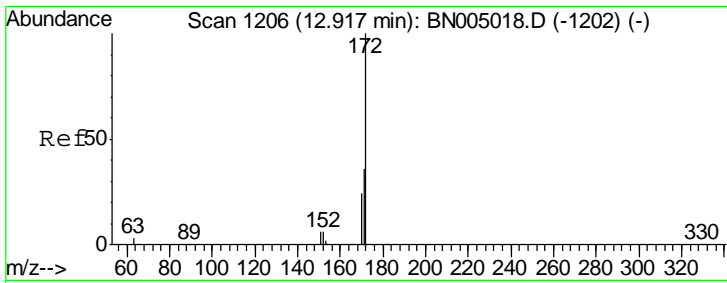


#14
 2,4,6-Tribromophenol
 Concen: 0.300 ng
 RT: 15.83 min Scan# 1467
 Delta R.T. 0.01 min
 Lab File: BN005042.D
 Acq: 01 Apr 2019 11:08



Tgt Ion	Resp	Lower	Upper
330	100		
332	0.0	0.0	0.0
141	26.8	21.3	31.9





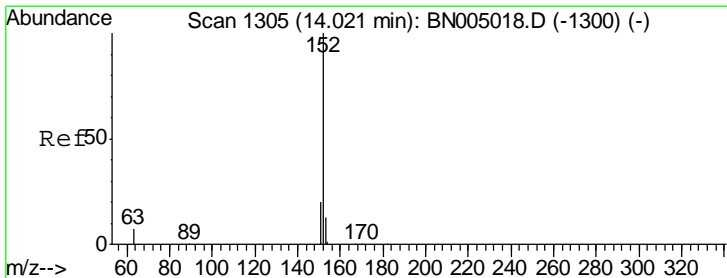
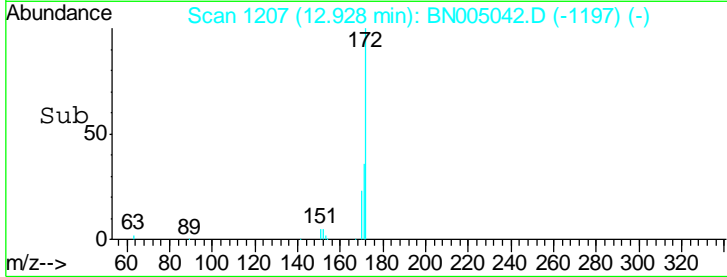
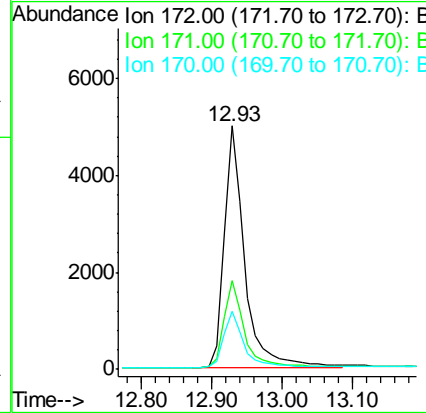
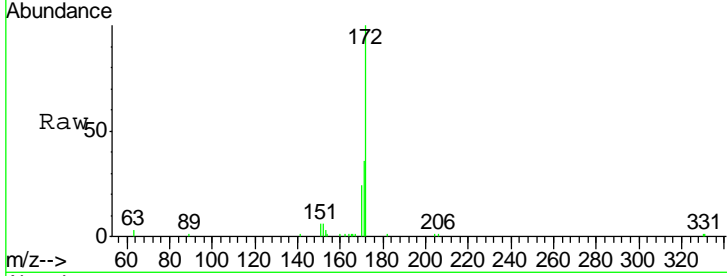
#15
 2-Fluorobiphenyl
 Concen: 0.404 ng
 RT: 12.93 min Scan# 1207
 Delta R.T. 0.01 min
 Lab File: BN005042.D
 Acq: 01 Apr 2019 11:08

Instrument :
 BNA_N
 ClientSampled :
 MDL-MDL-WATER-03-QT1-2019

Tgt Ion	Resp	Lower	Upper
172	10157		
171	36.3	29.4	44.0
170	23.9	20.0	30.0

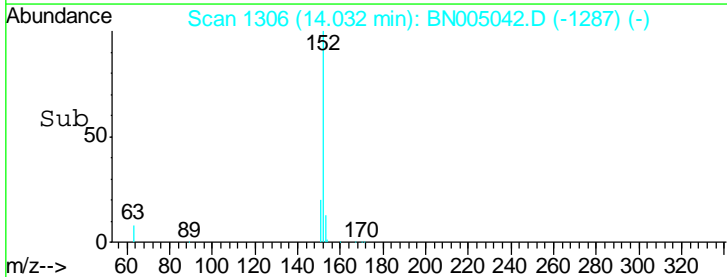
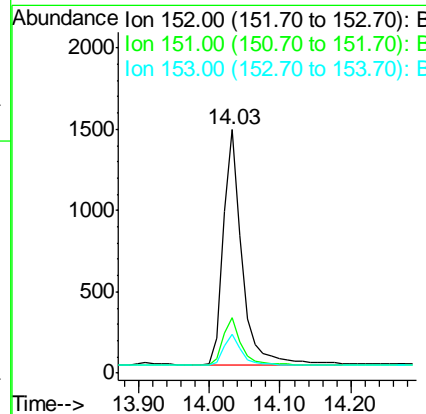
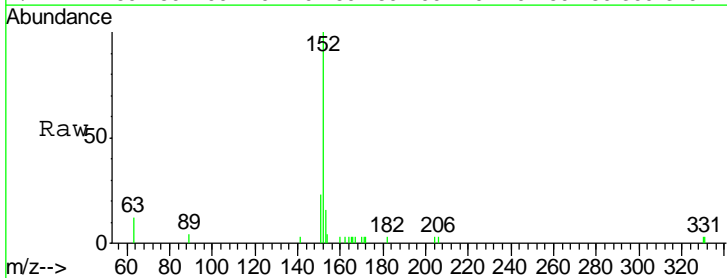
Manual Integrations
 APPROVED

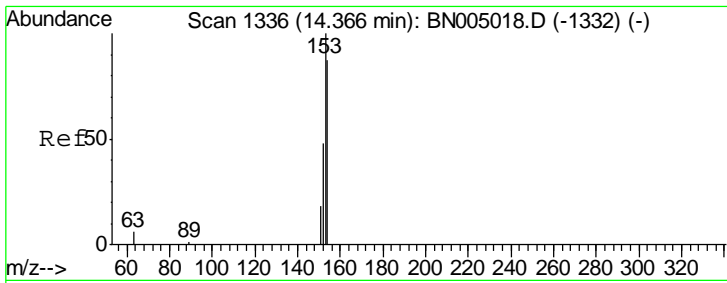
Sohil
 4/2/2019 5:33:21 PM



#16
 Acenaphthylene
 Concen: 0.086 ng
 RT: 14.03 min Scan# 1306
 Delta R.T. 0.01 min
 Lab File: BN005042.D
 Acq: 01 Apr 2019 11:08

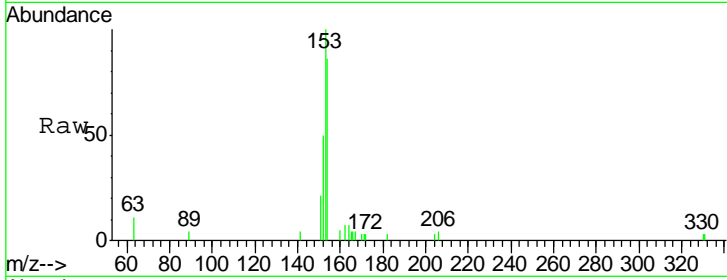
Tgt Ion	Resp	Lower	Upper
152	2711		
151	20.0	15.8	23.6
153	13.0	10.6	15.8





#17
 Acenaphthene
 Concen: 0.099 ng
 RT: 14.37 min Scan# 1336
 Delta R.T. 0.00 min
 Lab File: BN005042.D
 Acq: 01 Apr 2019 11:08

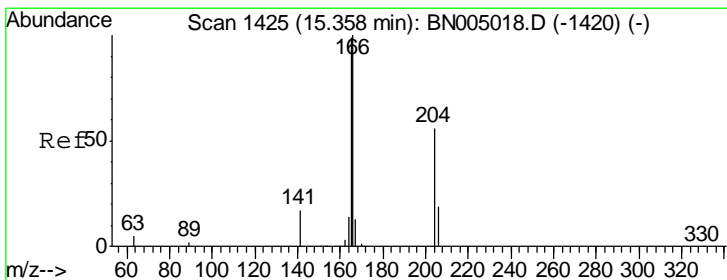
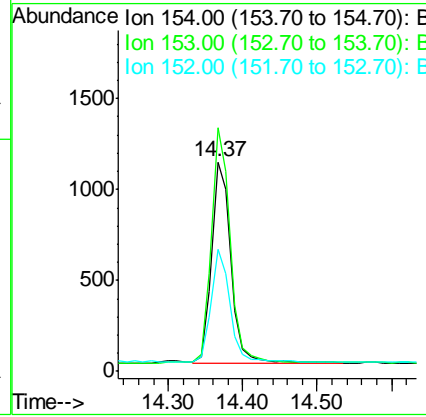
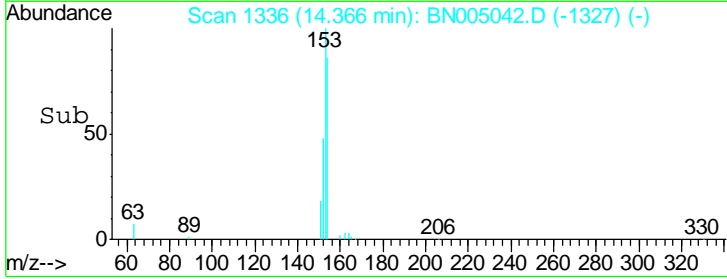
Instrument :
 BNA_N
 ClientSampled :
 MDL-MDL-WATER-03-QT1-2019



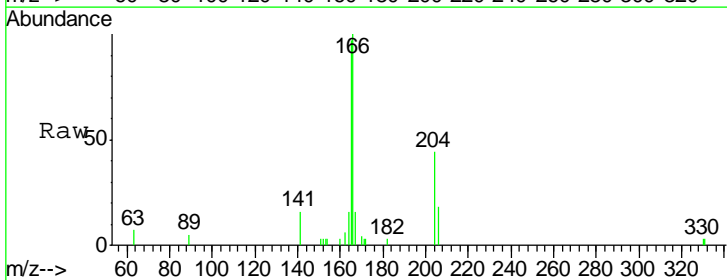
Tgt Ion: 154 Resp: 1967

Ion	Ratio	Lower	Upper
154	100		
153	114.7	92.1	138.1
152	54.6	44.2	66.2

Manual Integrations
APPROVED
 Sohil
 4/2/2019 5:33:21 PM

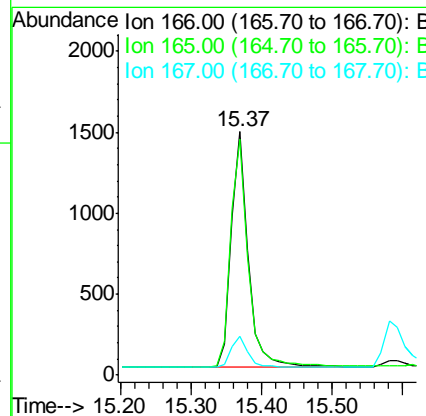
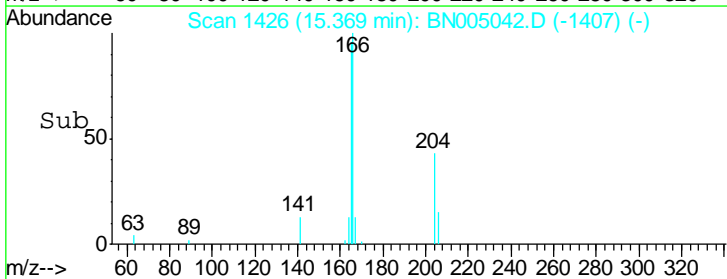


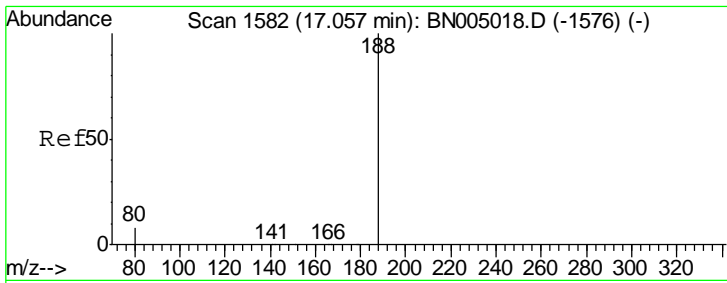
#18
 Fluorene
 Concen: 0.094 ng
 RT: 15.37 min Scan# 1426
 Delta R.T. 0.01 min
 Lab File: BN005042.D
 Acq: 01 Apr 2019 11:08



Tgt Ion: 166 Resp: 2526

Ion	Ratio	Lower	Upper
166	100		
165	98.4	78.7	118.1
167	13.5	10.9	16.3





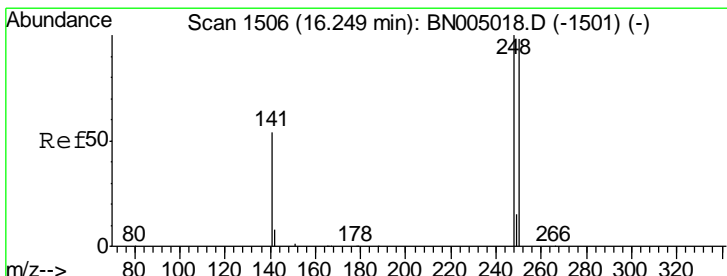
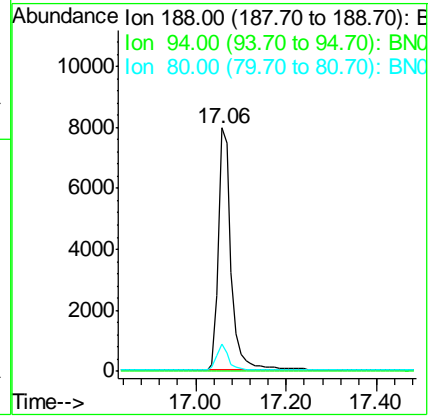
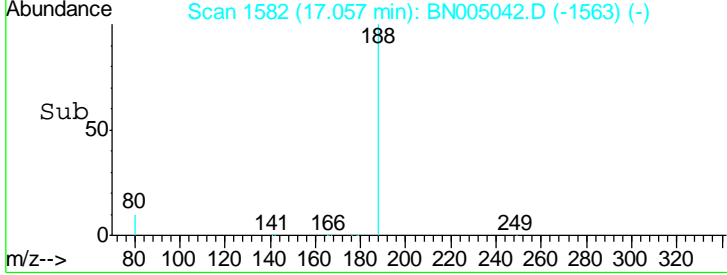
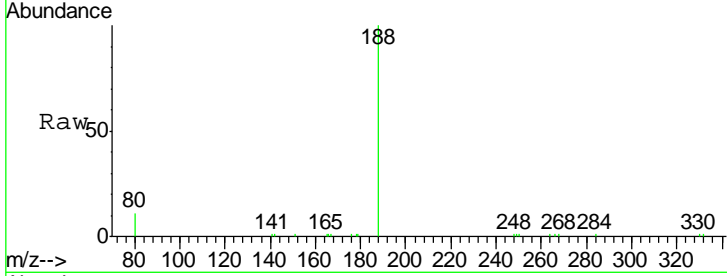
#19
 Phenanthrene-d10
 Concen: 0.400 ng
 RT: 17.06 min Scan# 1582
 Delta R.T. 0.00 min
 Lab File: BN005042.D
 Acq: 01 Apr 2019 11:08

Instrument :
 BNA_N
Client Sampled :
 MDL-MDL-WATER-03-QT1-2019

Tgt Ion	Resp	Lower	Upper
188	15576		
94	0.0	0.0	0.0
80	11.0	6.9	10.3#

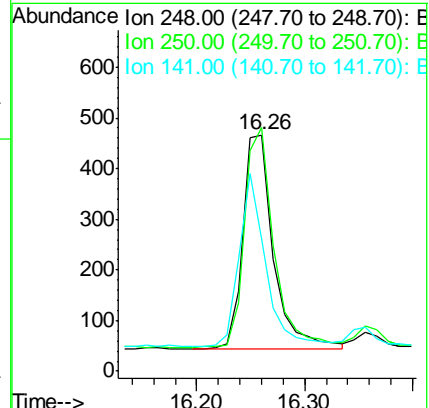
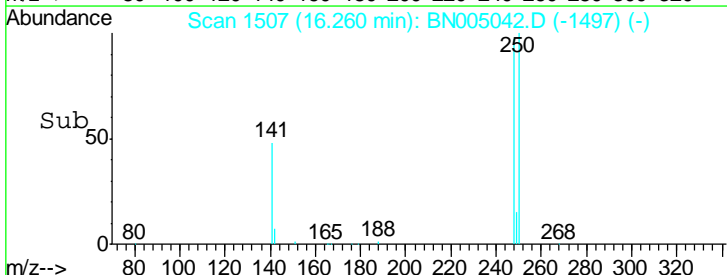
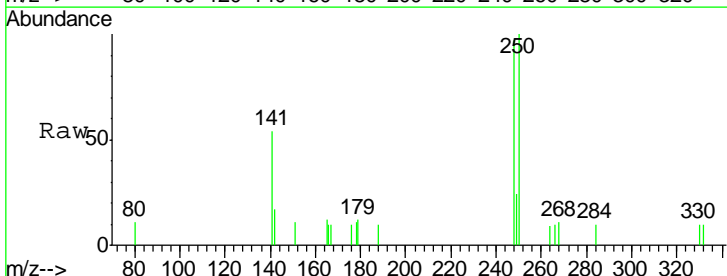
Manual Integrations
APPROVED

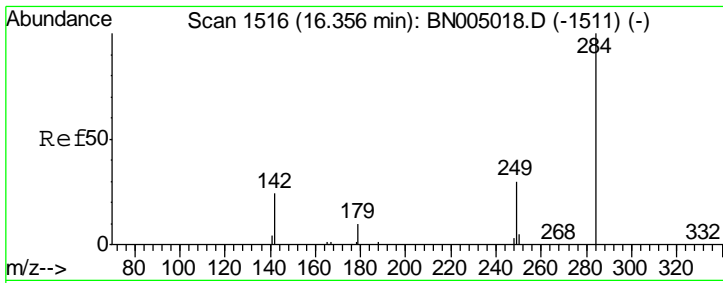
Sohil
 4/2/2019 5:33:21 PM



#20
 4-Bromophenyl-phenylether
 Concen: 0.093 ng
 RT: 16.26 min Scan# 1507
 Delta R.T. 0.01 min
 Lab File: BN005042.D
 Acq: 01 Apr 2019 11:08

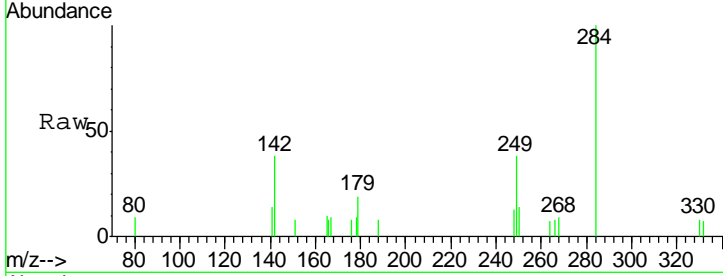
Tgt Ion	Resp	Lower	Upper
248	828		
250	103.0	78.6	117.8
141	55.9	43.6	65.4





#21
 Hexachlorobenzene
 Concen: 0.100 ng
 RT: 16.36 min Scan# 1516
 Delta R.T. 0.00 min
 Lab File: BN005042.D
 Acq: 01 Apr 2019 11:08

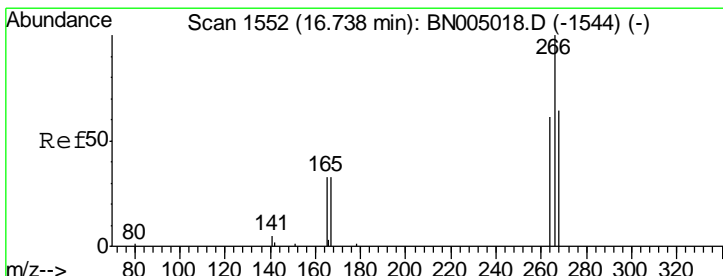
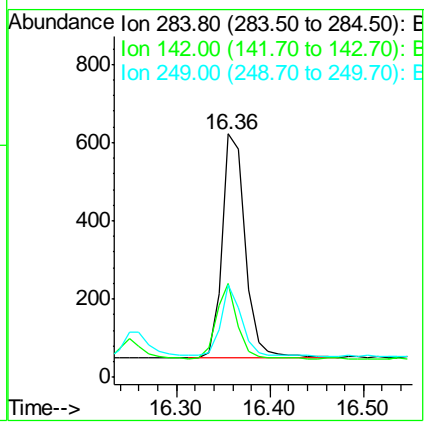
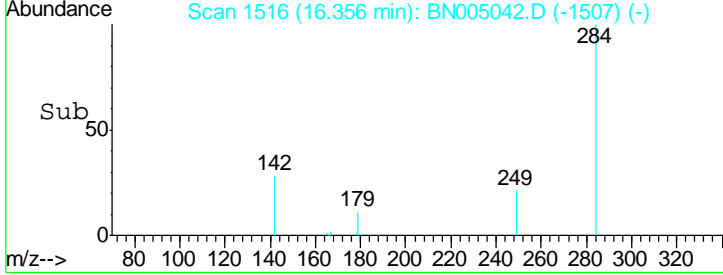
Instrument :
 BNA_N
ClientSampled :
 MDL-MDL-WATER-03-QT1-2019



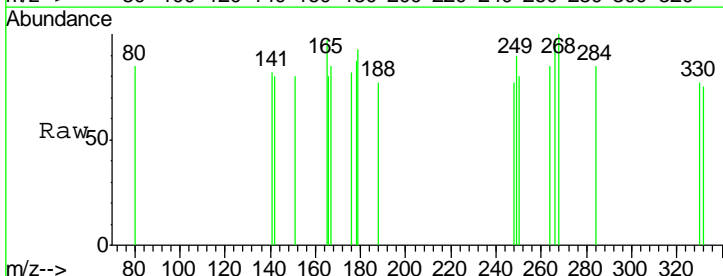
Tgt Ion: 284 Resp: 982

Ion	Ratio	Lower	Upper
284	100		
142	30.4	24.9	37.3
249	28.6	23.8	35.6

Manual Integrations
APPROVED
 Sohil
 4/2/2019 5:33:21 PM

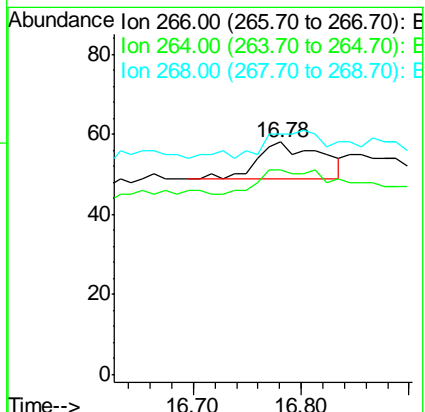
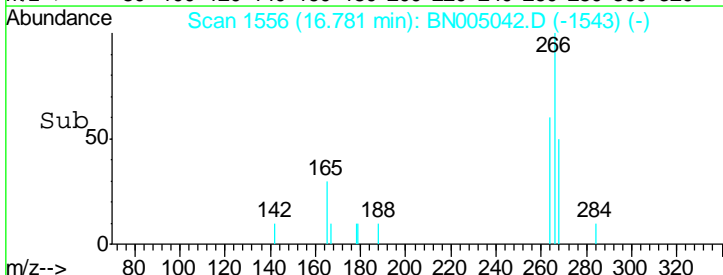


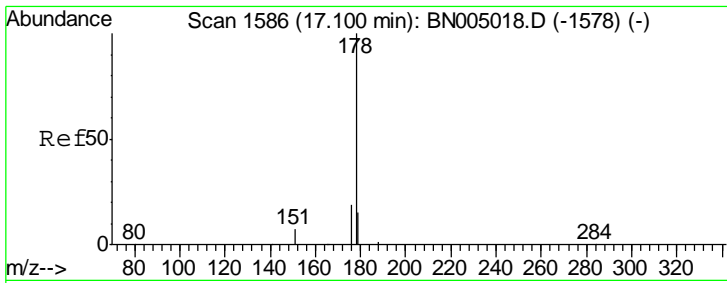
#22
 Pentachlorophenol
 Concen: 0.108 ng
 RT: 16.78 min Scan# 1556
 Delta R.T. 0.04 min
 Lab File: BN005042.D
 Acq: 01 Apr 2019 11:08



Tgt Ion: 266 Resp: 36

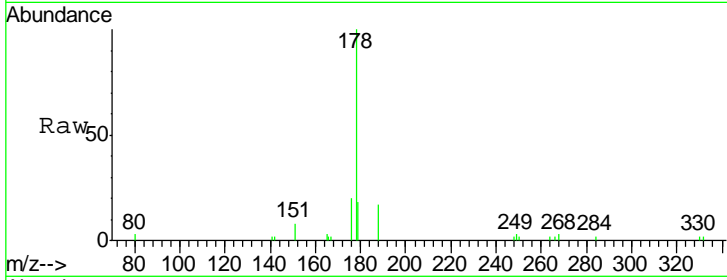
Ion	Ratio	Lower	Upper
266	100		
264	87.9	53.4	80.0#
268	103.4	58.9	88.3#





#23
 Phenanthrene
 Concen: 0.095 ng
 RT: 17.11 min Scan# 1587
 Delta R.T. 0.01 min
 Lab File: BN005042.D
 Acq: 01 Apr 2019 11:08

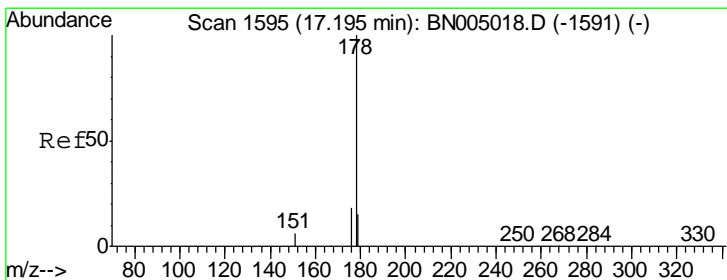
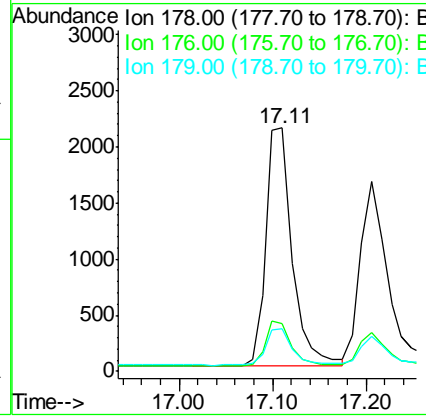
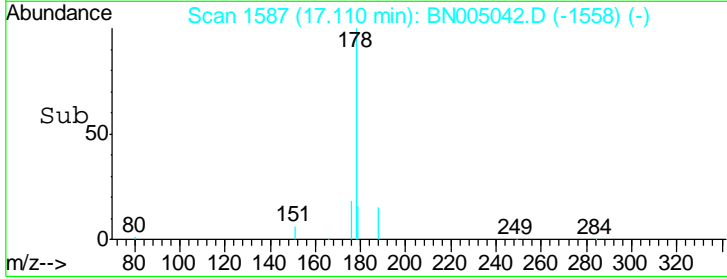
Instrument :
 BNA_N
 ClientSampled :
 MDL-MDL-WATER-03-QT1-2019



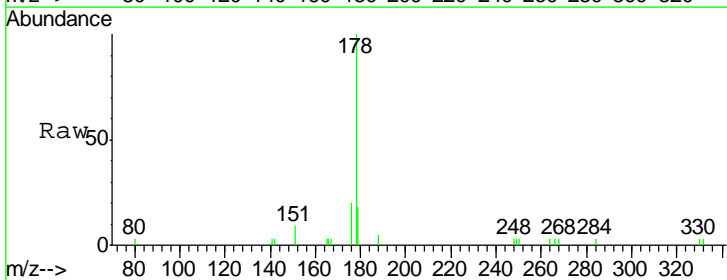
Tgt Ion: 178 Resp: 4156

Ion	Ratio	Lower	Upper
178	100		
176	18.5	15.1	22.7
179	15.8	12.2	18.2

Manual Integrations
APPROVED
 Sohil
 4/2/2019 5:33:21 PM

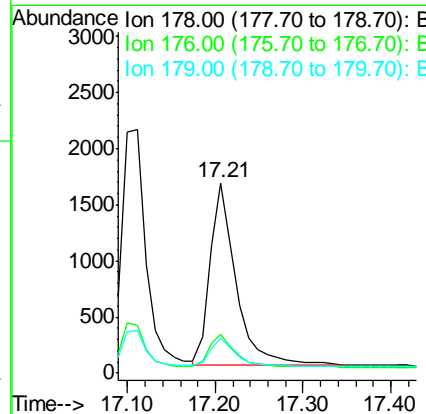
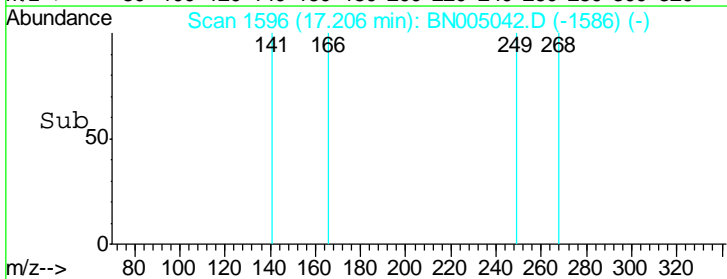


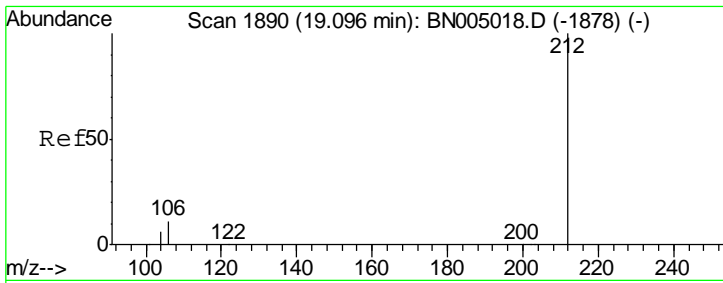
#24
 Anthracene
 Concen: 0.086 ng
 RT: 17.21 min Scan# 1596
 Delta R.T. 0.01 min
 Lab File: BN005042.D
 Acq: 01 Apr 2019 11:08



Tgt Ion: 178 Resp: 3329

Ion	Ratio	Lower	Upper
178	100		
176	18.1	14.6	22.0
179	15.0	12.3	18.5





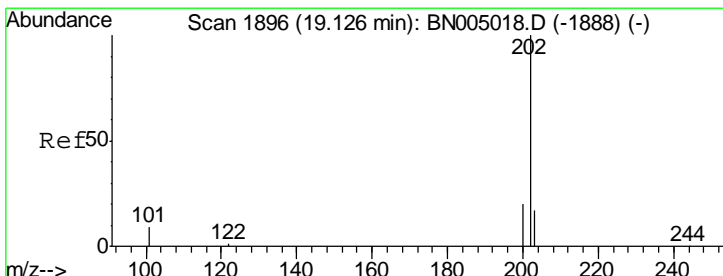
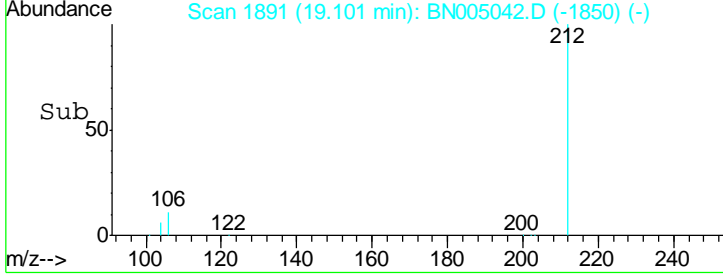
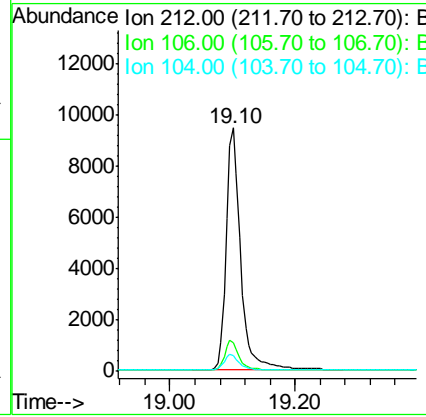
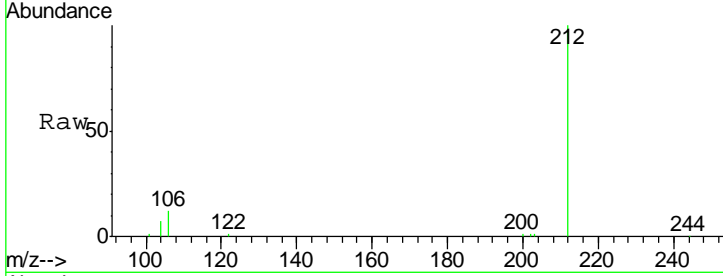
#25
 Fluoranthene-d10
 Concen: 0.344 ng
 RT: 19.10 min Scan# 1891
 Delta R.T. 0.01 min
 Lab File: BN005042.D
 Acq: 01 Apr 2019 11:08

Instrument :
 BNA_N
ClientSampled :
 MDL-MDL-WATER-03-QT1-2019

Tgt Ion	Resp	Lower	Upper
212	15286		
212	100		
106	12.1	9.4	14.2
104	6.7	5.4	8.0

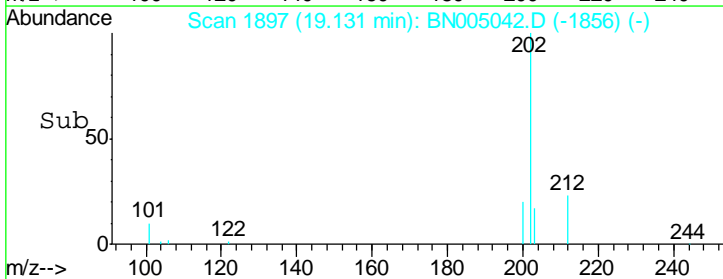
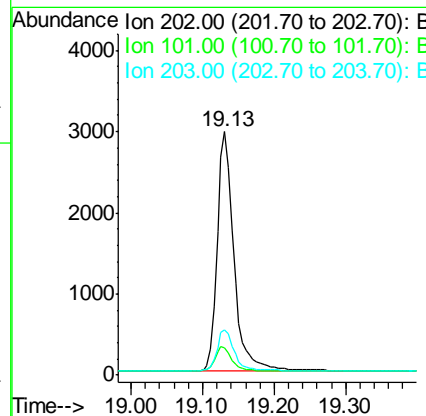
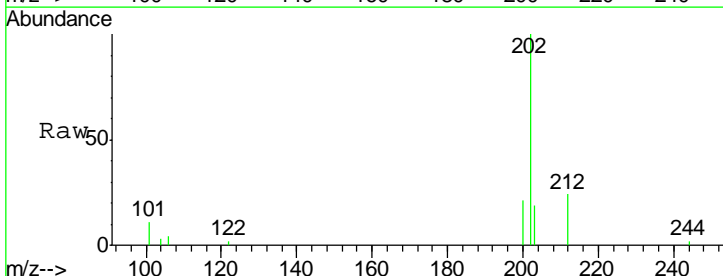
Manual Integrations
APPROVED

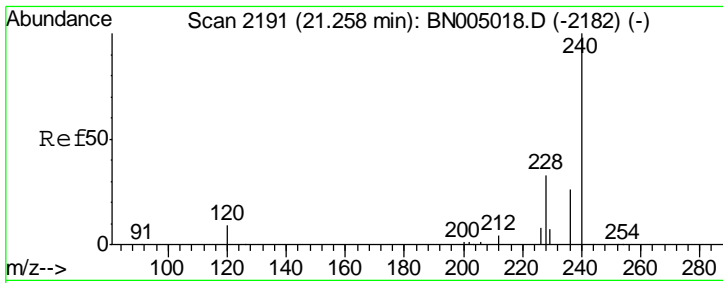
Sohil
 4/2/2019 5:33:21 PM



#26
 Fluoranthene
 Concen: 0.089 ng
 RT: 19.13 min Scan# 1897
 Delta R.T. 0.01 min
 Lab File: BN005042.D
 Acq: 01 Apr 2019 11:08

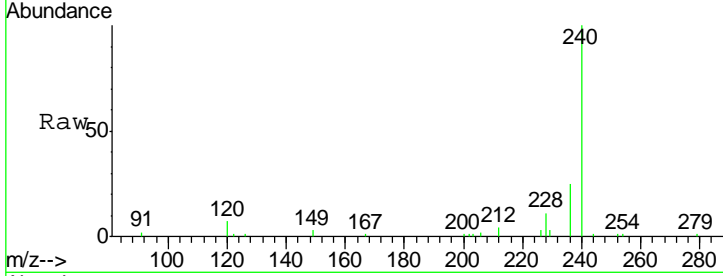
Tgt Ion	Resp	Lower	Upper
202	4774		
202	100		
101	10.5	8.2	12.2
203	17.3	13.8	20.8





#27
 Chrysene-d12
 Concen: 0.400 ng
 RT: 21.27 min Scan# 2192
 Delta R.T. 0.01 min
 Lab File: BN005042.D
 Acq: 01 Apr 2019 11:08

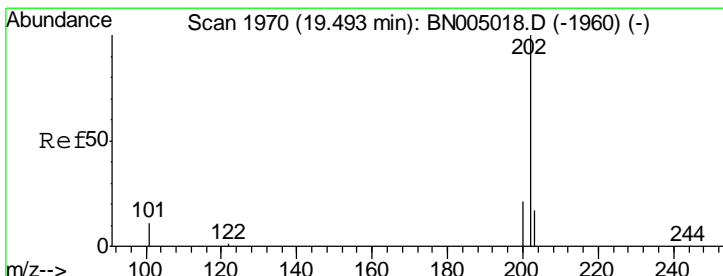
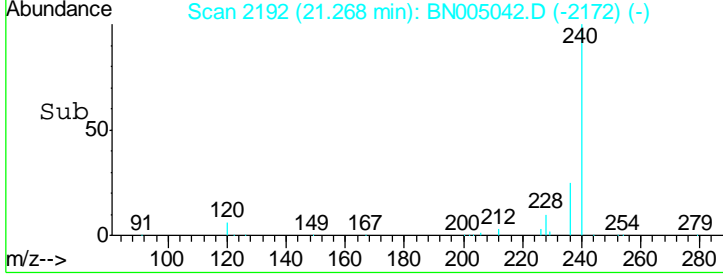
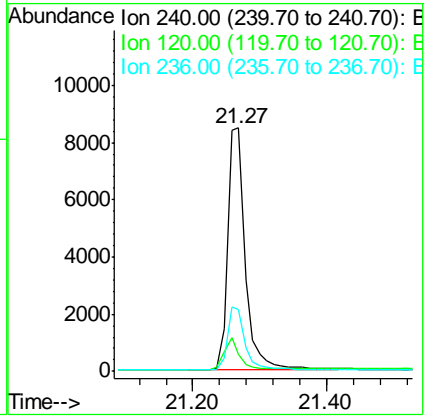
Instrument :
 BNA_N
ClientSampled :
 MDL-MDL-WATER-03-QT1-2019



Tgt Ion: 240 Resp: 15528

Ion	Ratio	Lower	Upper
240	100		
120	7.1	7.4	11.0#
236	25.4	21.0	31.6

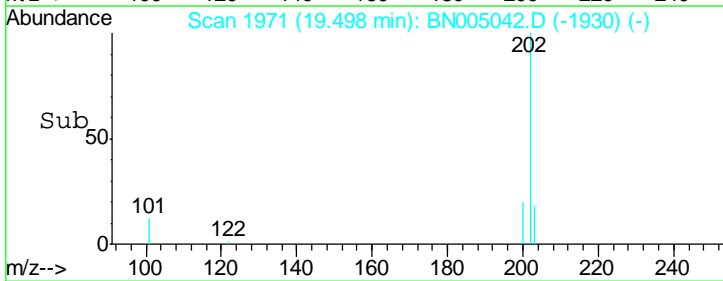
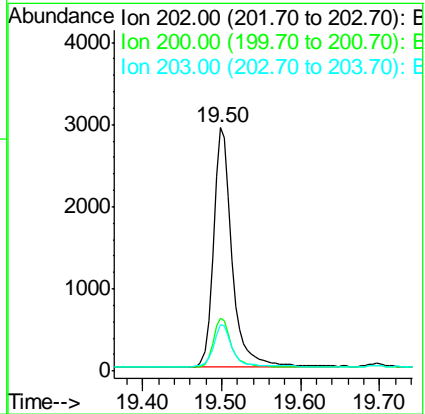
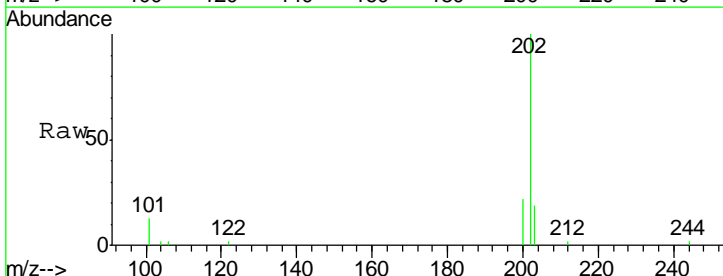
Manual Integrations
APPROVED
 Sohil
 4/2/2019 5:33:21 PM

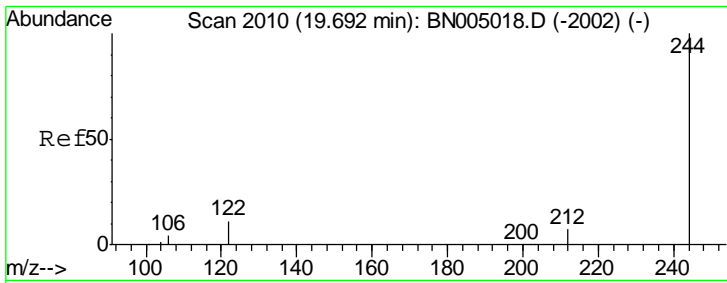


#28
 Pyrene
 Concen: 0.109 ng
 RT: 19.50 min Scan# 1971
 Delta R.T. 0.01 min
 Lab File: BN005042.D
 Acq: 01 Apr 2019 11:08

Tgt Ion: 202 Resp: 4794

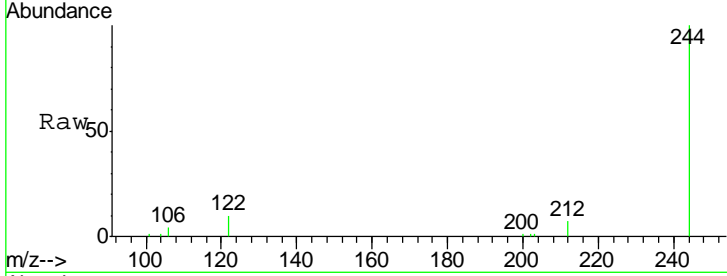
Ion	Ratio	Lower	Upper
202	100		
200	20.6	16.5	24.7
203	17.7	13.9	20.9





#29
 Terphenyl-d14
 Concen: 0.454 ng
 RT: 19.70 min Scan# 2011
 Delta R.T. 0.01 min
 Lab File: BN005042.D
 Acq: 01 Apr 2019 11:08

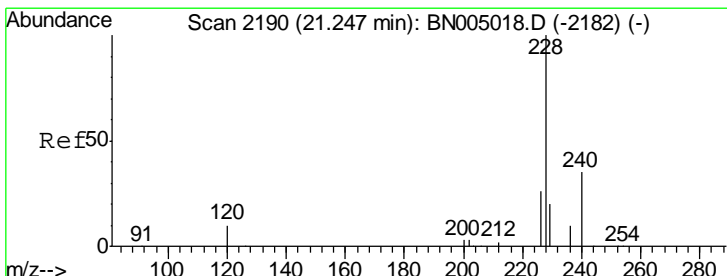
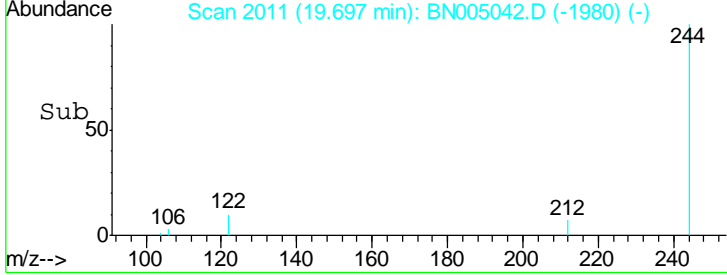
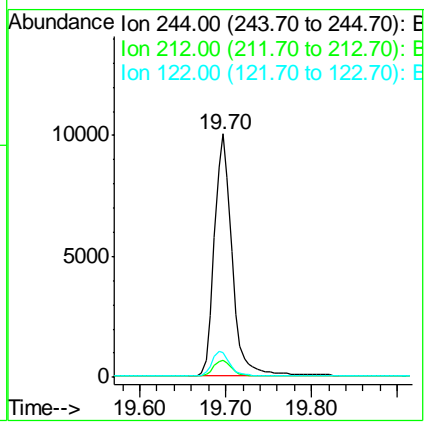
Instrument :
 BNA_N
ClientSampled :
 MDL-MDL-WATER-03-QT1-2019



Tgt Ion: 244 Resp: 14497

Ion	Ratio	Lower	Upper
244	100		
212	7.2	5.9	8.9
122	10.4	9.0	13.4

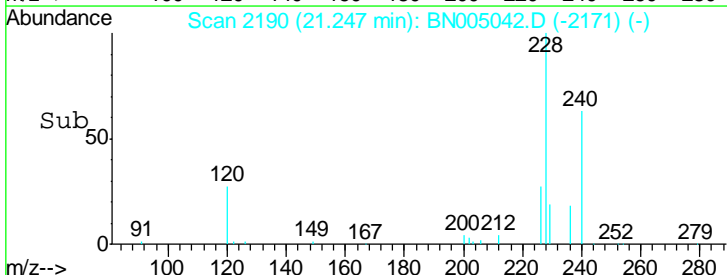
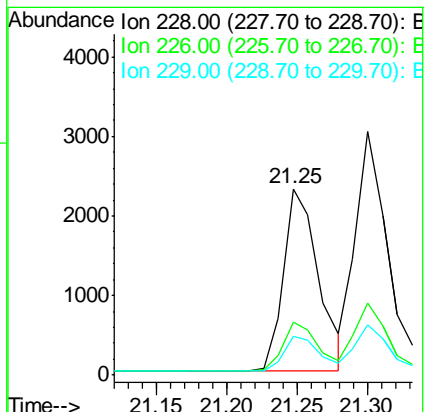
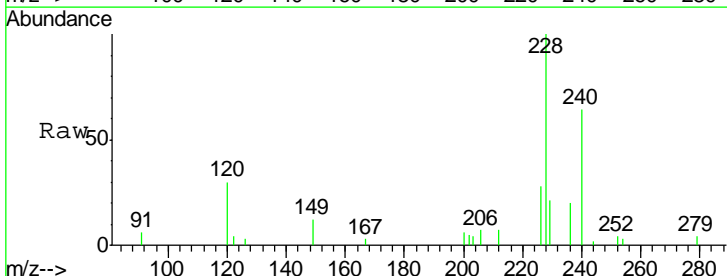
Manual Integrations
APPROVED
 Sohil
 4/2/2019 5:33:21 PM

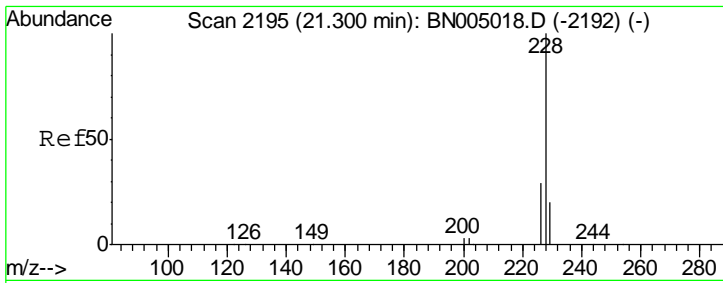


#30
 Benzo(a)anthracene
 Concen: 0.092 ng
 RT: 21.25 min Scan# 2190
 Delta R.T. 0.00 min
 Lab File: BN005042.D
 Acq: 01 Apr 2019 11:08

Tgt Ion: 228 Resp: 4007

Ion	Ratio	Lower	Upper
228	100		
226	28.3	20.9	31.3
229	21.0	16.2	24.2





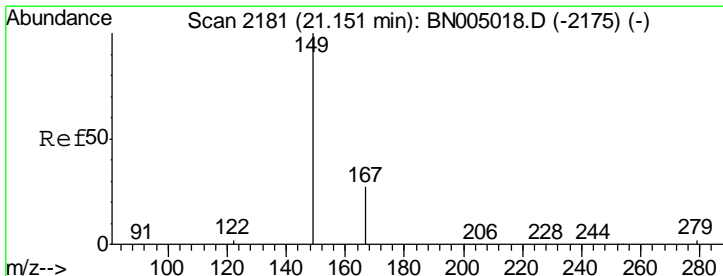
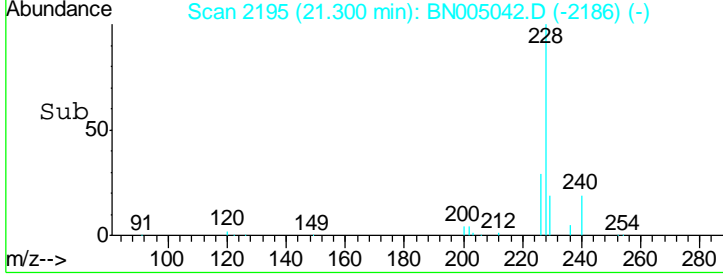
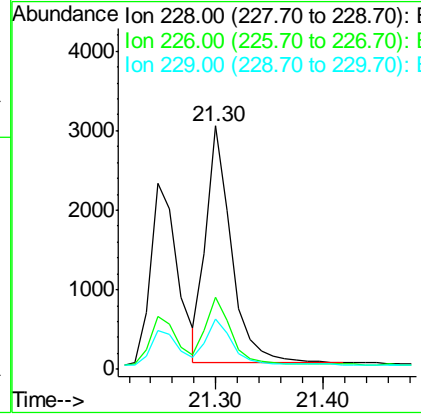
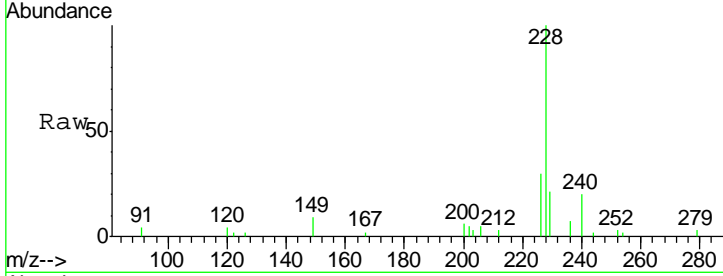
#31
 Chrysene
 Concen: 0.102 ng
 RT: 21.30 min Scan# 2195
 Delta R.T. 0.00 min
 Lab File: BN005042.D
 Acq: 01 Apr 2019 11:08

Instrument :
 BNA_N
 ClientSampled :
 MDL-MDL-WATER-03-QT1-2019

Tgt Ion	Resp	Lower	Upper
228	100		
226	29.9	22.8	34.2
229	20.5	16.2	24.4

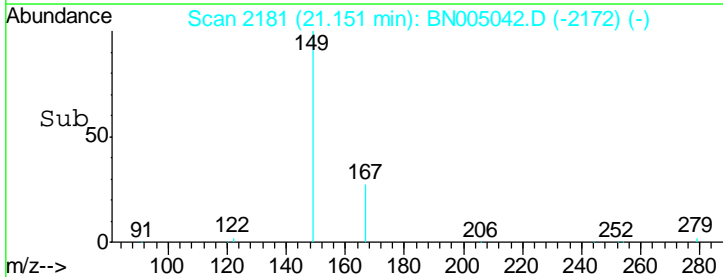
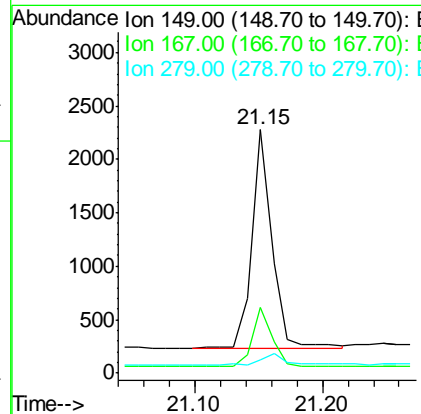
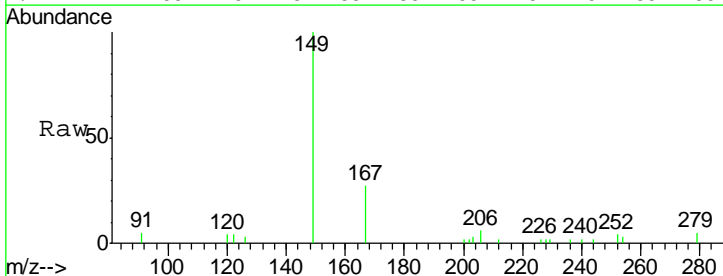
Manual Integrations
 APPROVED

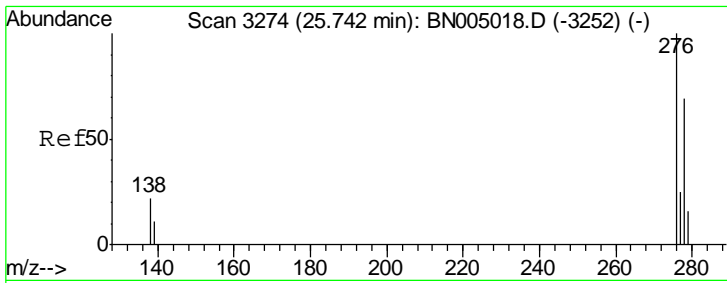
Sohil
 4/2/2019 5:33:21 PM



#32
 Bis(2-ethylhexyl)phthalate
 Concen: 0.123 ng
 RT: 21.15 min Scan# 2181
 Delta R.T. 0.00 min
 Lab File: BN005042.D
 Acq: 01 Apr 2019 11:08

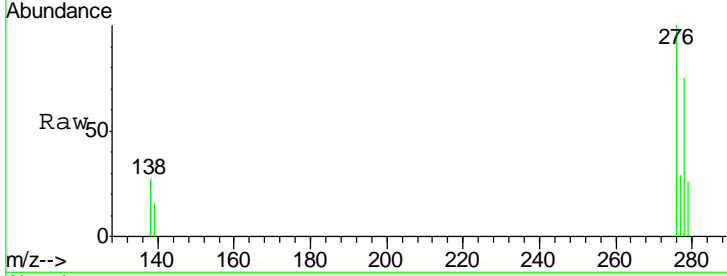
Tgt Ion	Resp	Lower	Upper
149	100		
167	27.0	22.2	33.4
279	5.1	4.2	6.4





#33
 Indeno(1,2,3-cd)pyrene
 Concen: 0.094 ng
 RT: 25.77 min Scan# 3281
 Delta R.T. 0.02 min
 Lab File: BN005042.D
 Acq: 01 Apr 2019 11:08

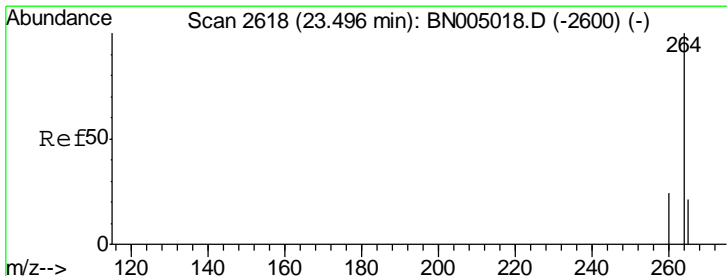
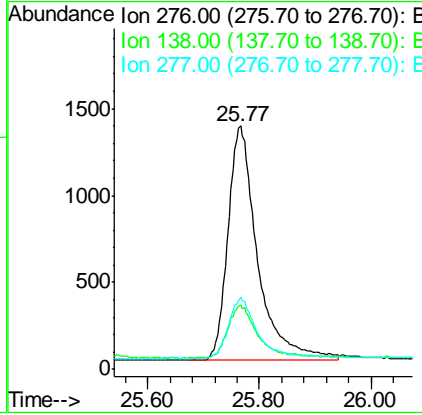
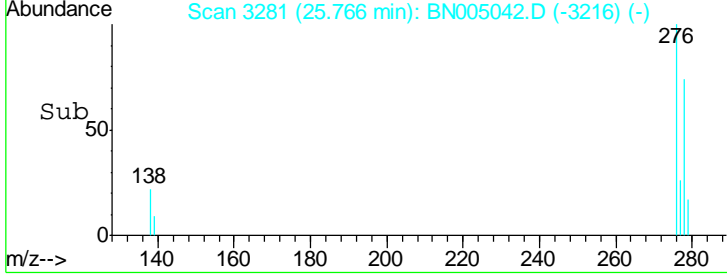
Instrument :
 BNA_N
ClientSampled :
 MDL-MDL-WATER-03-QT1-2019



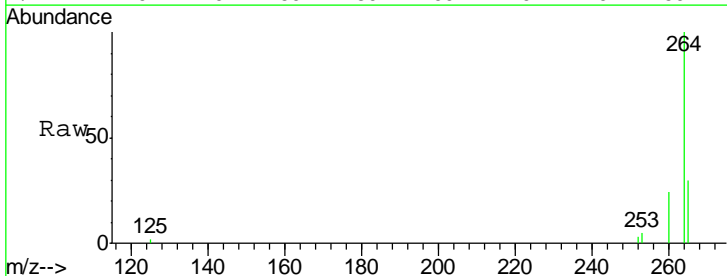
Tgt Ion: 276 Resp: 4969

Ion	Ratio	Lower	Upper
276	100		
138	21.6	18.2	27.2
277	24.9	20.3	30.5

Manual Integrations
APPROVED
 Sohil
 4/2/2019 5:33:21 PM

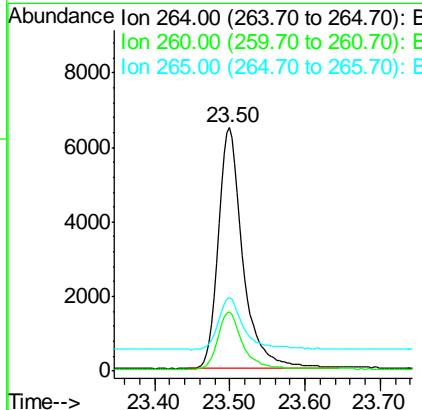
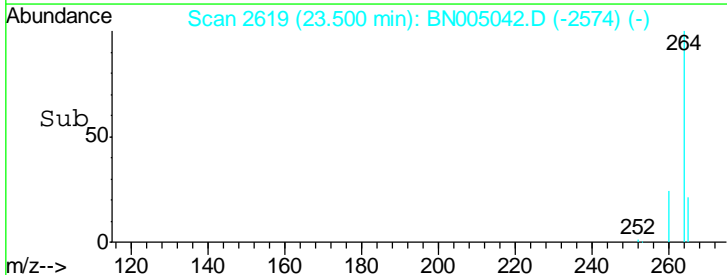


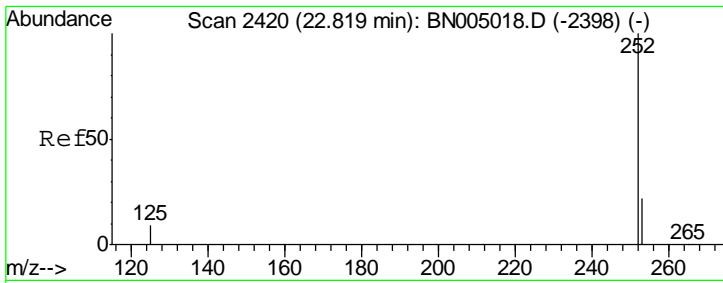
#34
 Perylene-d12
 Concen: 0.400 ng
 RT: 23.50 min Scan# 2619
 Delta R.T. 0.00 min
 Lab File: BN005042.D
 Acq: 01 Apr 2019 11:08



Tgt Ion: 264 Resp: 14725

Ion	Ratio	Lower	Upper
264	100		
260	24.5	19.4	29.0
265	30.1	22.5	33.7





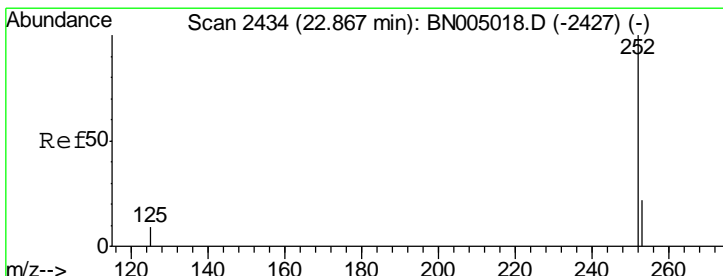
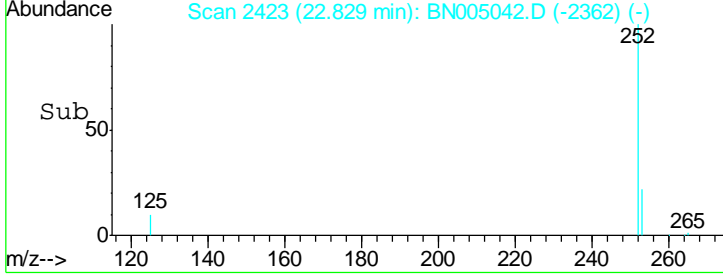
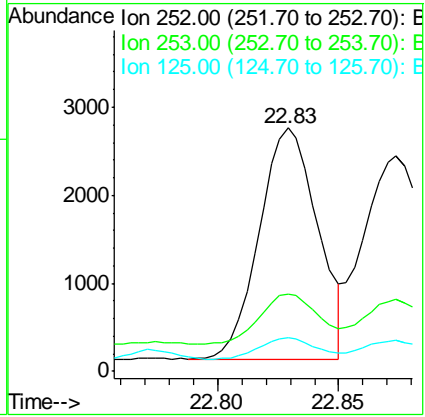
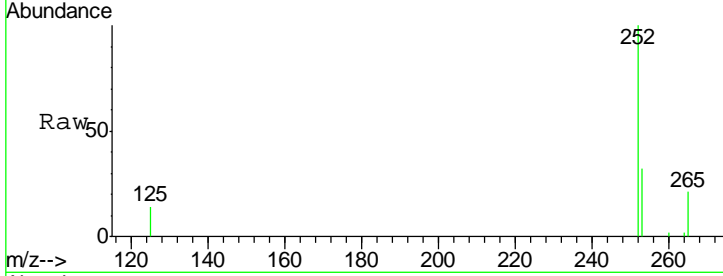
#35
 Benzo(b)fluoranthene
 Concen: 0.094 ng
 RT: 22.83 min Scan# 2423
 Delta R.T. 0.01 min
 Lab File: BN005042.D
 Acq: 01 Apr 2019 11:08

Instrument :
 BNA_N
ClientSampled :
 MDL-MDL-WATER-03-QT1-2019

Tgt Ion	Resp	Lower	Upper
252	100		
253	31.9	19.2	28.8#
125	13.8	8.2	12.2#

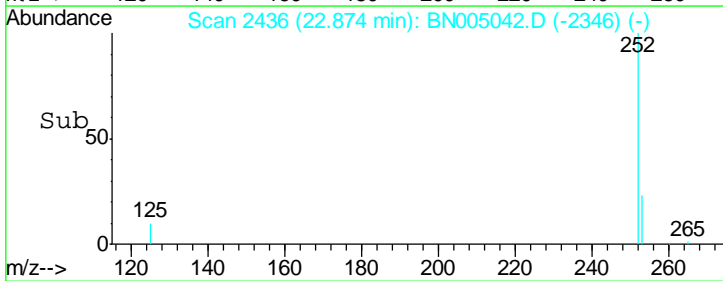
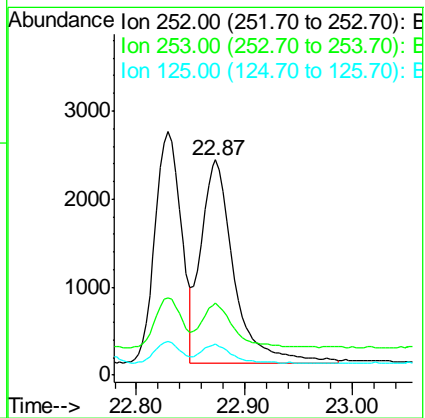
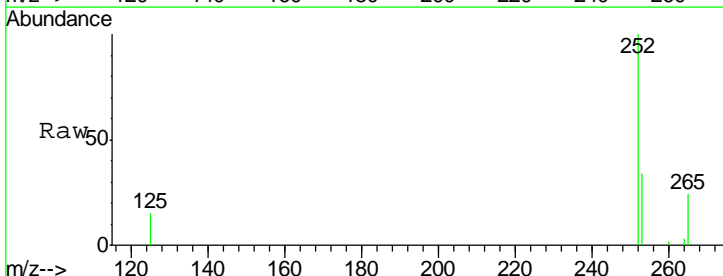
Manual Integrations
APPROVED

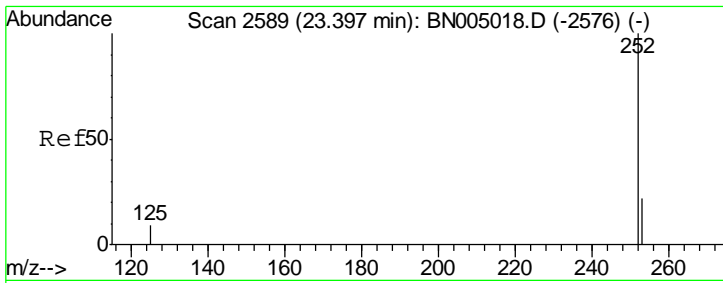
Sohil
 4/2/2019 5:33:21 PM



#36
 Benzo(k)fluoranthene
 Concen: 0.109 ng m
 RT: 22.87 min Scan# 2436
 Delta R.T. 0.01 min
 Lab File: BN005042.D
 Acq: 01 Apr 2019 11:08

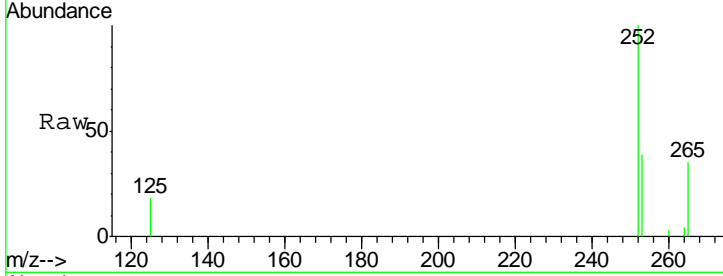
Tgt Ion	Resp	Lower	Upper
252	100		
253	33.5	19.3	28.9#
125	14.5	8.2	12.2#





#37
 Benzo(a)pyrene
 Concen: 0.094 ng
 RT: 23.41 min Scan# 2592
 Delta R.T. 0.01 min
 Lab File: BN005042.D
 Acq: 01 Apr 2019 11:08

Instrument :
 BNA_N
ClientSampled :
 MDL-MDL-WATER-03-QT1-2019

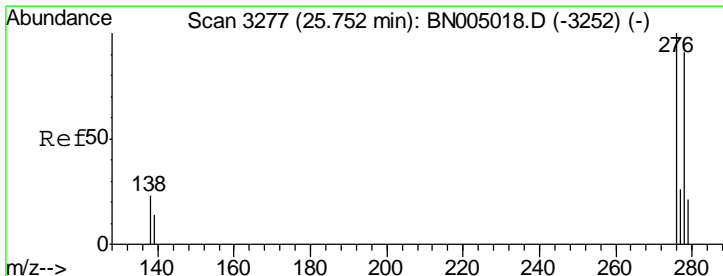
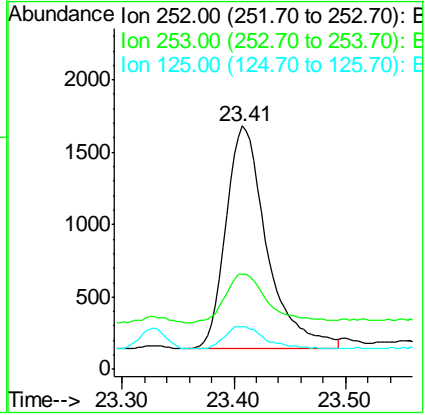
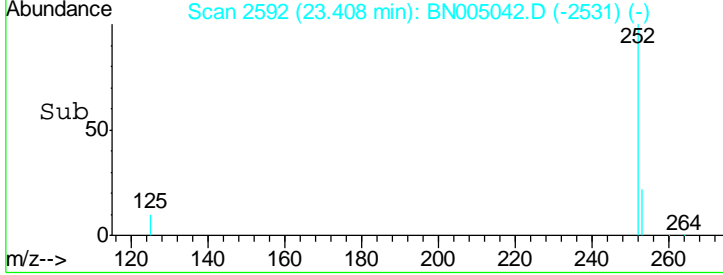


Tgt Ion: 252 Resp: 3930

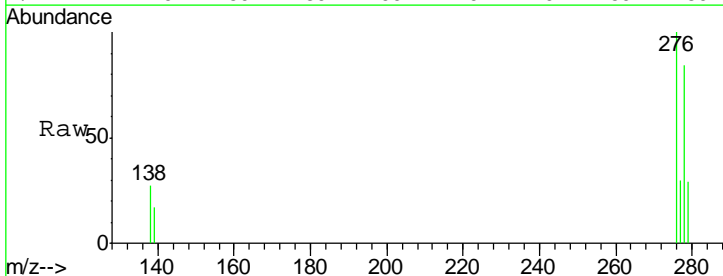
Ion	Ratio	Lower	Upper
252	100		
253	38.9	20.2	30.2#
125	17.6	9.2	13.8#

Manual Integrations
APPROVED

Sohil
 4/2/2019 5:33:21 PM

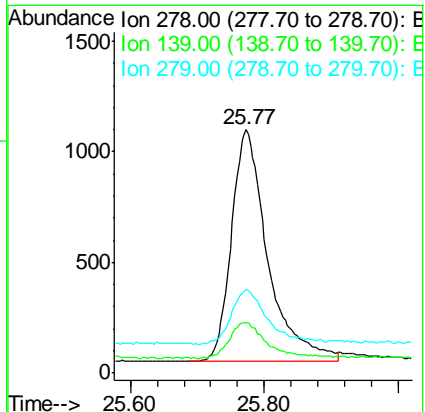
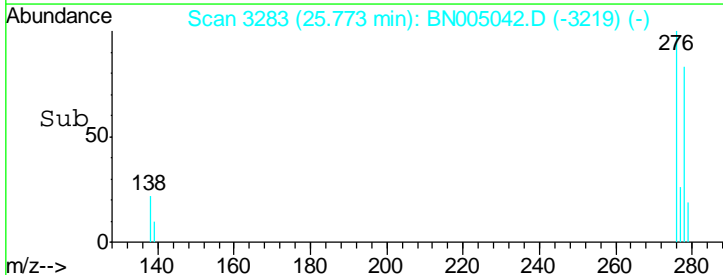


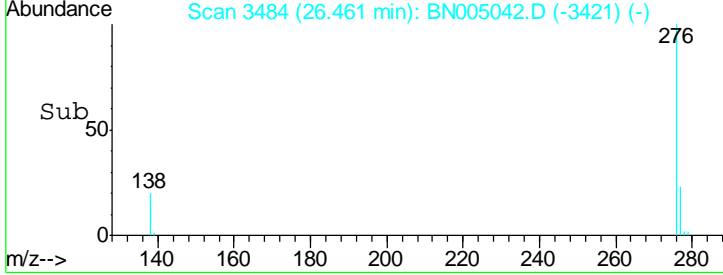
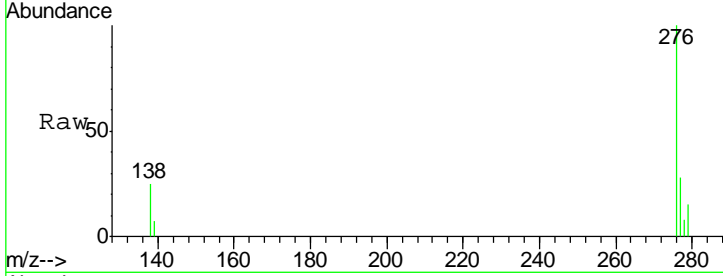
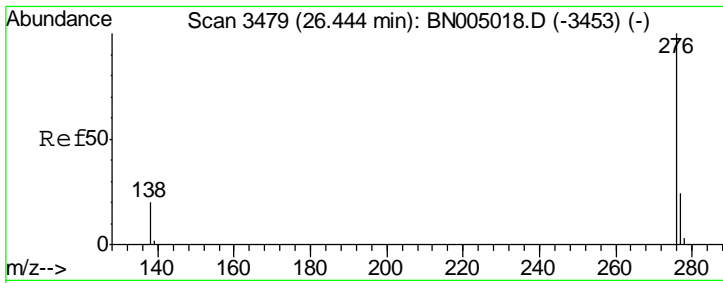
#38
 Dibenzo(a,h)anthracene
 Concen: 0.094 ng
 RT: 25.77 min Scan# 3283
 Delta R.T. 0.02 min
 Lab File: BN005042.D
 Acq: 01 Apr 2019 11:08



Tgt Ion: 278 Resp: 3932

Ion	Ratio	Lower	Upper
278	100		
139	20.6	13.1	19.7#
279	34.5	20.2	30.2#





#39
 Benzo(g,h,i)perylene
 Concen: 0.101 ng
 RT: 26.46 min Scan# 3484
 Delta R.T. 0.02 min
 Lab File: BN005042.D
 Acq: 01 Apr 2019 11:08

Tgt Ion	Ratio	Lower	Upper
276	100		
277	27.7	19.8	29.6
138	25.0	16.4	24.6

Instrument :
 BNA_N
ClientSampled :
 MDL-MDL-WATER-03-QT1-2019

Manual Integrations
APPROVED
 Sohil
 4/2/2019 5:33:21 PM

