

Data Path : Z:\svoasrv\HPCHEM1\BNA_N\Data\BN040124\
 Data File : BN030570.D
 Acq On : 31 Mar 2024 05:36
 Operator : MA/JU
 Sample : PB159893BS
 Misc :
 ALS Vial : 32 Sample Multiplier: 1

Instrument :
 BNA_N
 ClientSampleId :
 SLCS893

Quant Time: Mar 31 14:06:11 2024
 Quant Method : Z:\svoasrv\HPCHEM1\BNA_N\Methods\SFAM-EPA-SIM-BN032724.M
 Quant Title : ASP BNA STANDARDS FOR 5 POINT CALIBRATION
 QLast Update : Wed Mar 27 15:11:42 2024
 Response via : Initial Calibration

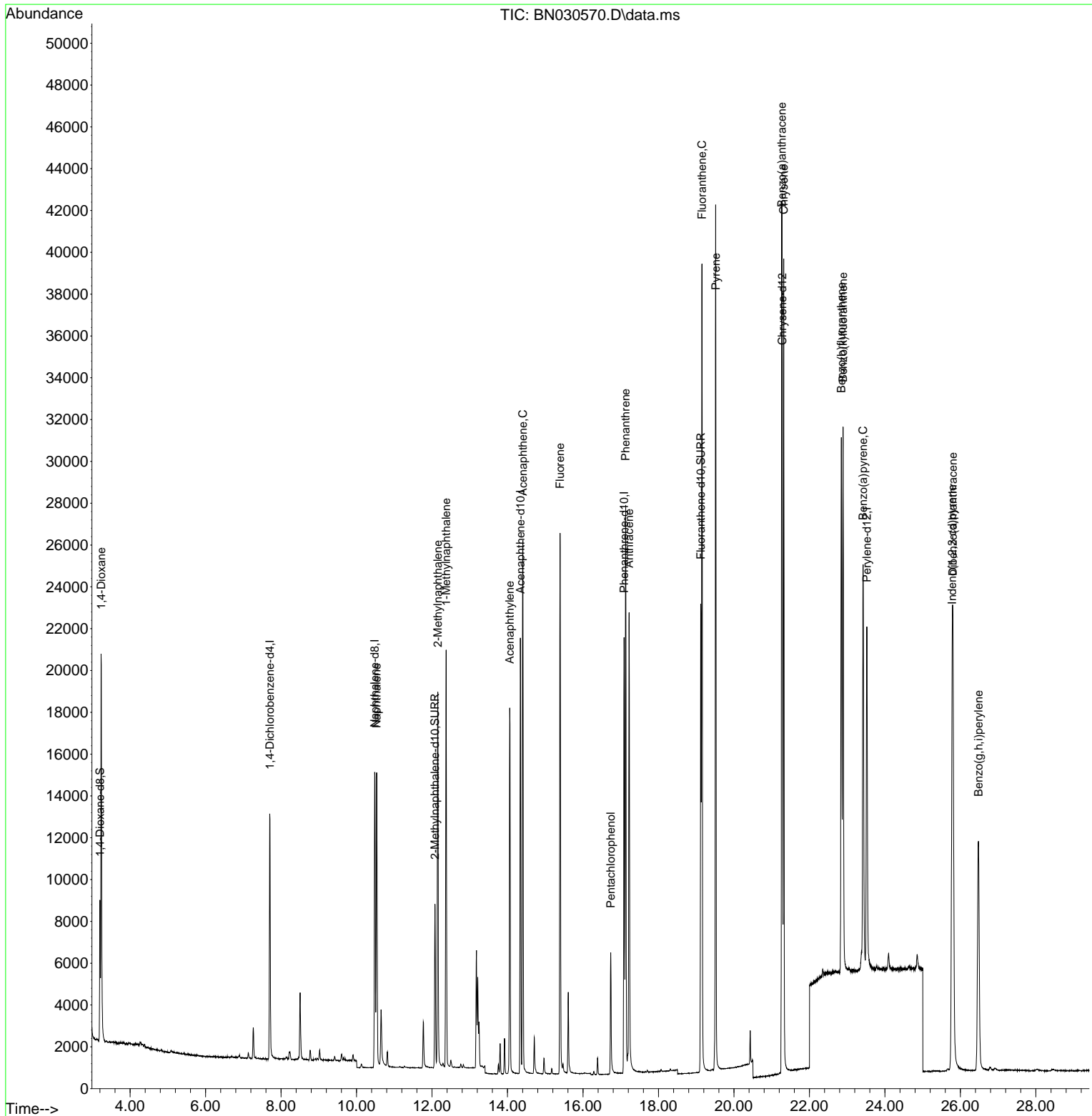
Compound	R.T.	QIon	Response	Conc	Units	Dev(Min)
Internal Standards						
1) 1,4-Dichlorobenzene-d4	7.700	152	6453	0.400	ng/ul	-0.02
4) Naphthalene-d8	10.481	136	20014	0.400	ng/ul	-0.03
9) Acenaphthene-d10	14.341	164	11458	0.400	ng/ul	-0.02
13) Phenanthrene-d10	17.088	188	25242	0.400	ng/ul	-0.02
17) Chrysene-d12	21.282	240	22746	0.400	ng/ul	-0.02
23) Perylene-d12	23.520	264	21926	0.400	ng/ul	-0.03
System Monitoring Compounds						
3) 1,4-Dioxane-d8	3.203	96	4474	0.633	ng/ul	-0.02
6) 2-Methylnaphthalene-d10	12.076	152	10596	0.352	ng/ul	-0.02
18) Fluoranthene-d10	19.120	212	24626	0.350	ng/ul	-0.02
Target Compounds						
						Qvalue
2) 1,4-Dioxane	3.232	88	13151	1.835	ng/ul#	83
5) Naphthalene	10.530	128	19800	0.363	ng/ul	99
7) 2-Methylnaphthalene	12.153	142	12933	0.359	ng/ul	99
8) 1-Methylnaphthalene	12.373	142	13419	0.352	ng/ul	99
10) Acenaphthylene	14.059	152	19946	0.386	ng/ul	99
11) Acenaphthene	14.406	153	14831	0.368	ng/ul	97
12) Fluorene	15.391	166	16840	0.355	ng/ul	98
14) Pentachlorophenol	16.733	266	4042	0.876	ng/ul	99
15) Phenanthrene	17.130	178	28404	0.375	ng/ul	100
16) Anthracene	17.223	178	25052	0.393	ng/ul	99
19) Fluoranthene	19.152	202	33517	0.357	ng/ul	100
20) Pyrene	19.515	202	34540	0.374	ng/ul	99
21) Benzo(a)anthracene	21.264	228	32419	0.413	ng/ul	99
22) Chrysene	21.317	228	33254	0.384	ng/ul	100
24) Benzo(b)fluoranthene	22.845	252	32619	0.365	ng/ul	99
25) Benzo(k)fluoranthene	22.889	252	33450	0.355	ng/ul	100
26) Benzo(a)pyrene	23.421	252	29172	0.403	ng/ul	99
27) Indeno(1,2,3-cd)pyrene	25.780	276	30829	0.376	ng/ul	99
28) Dibenzo(a,h)anthracene	25.801	278	24791	0.381	ng/ul	99
29) Benzo(g,h,i)perylene	26.478	276	24011	0.345	ng/ul	100

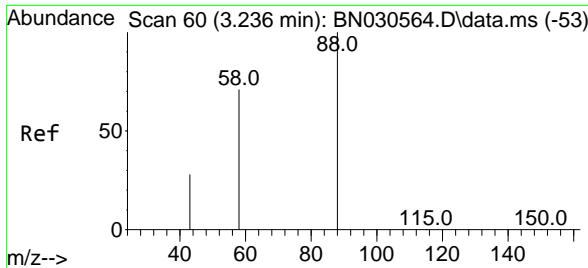
(#) = qualifier out of range (m) = manual integration (+) = signals summed

Data Path : Z:\svoasrv\HPCHEM1\BNA_N\Data\BN040124\
 Data File : BN030570.D
 Acq On : 31 Mar 2024 05:36
 Operator : MA/JU
 Sample : PB159893BS
 Misc :
 ALS Vial : 32 Sample Multiplier: 1

Instrument :
 BNA_N
 ClientSampleId :
 SLCS893

Quant Time: Mar 31 14:06:11 2024
 Quant Method : Z:\svoasrv\HPCHEM1\BNA_N\Methods\SFAM-EPA-SIM-BN032724.M
 Quant Title : ASP BNA STANDARDS FOR 5 POINT CALIBRATION
 QLast Update : Wed Mar 27 15:11:42 2024
 Response via : Initial Calibration



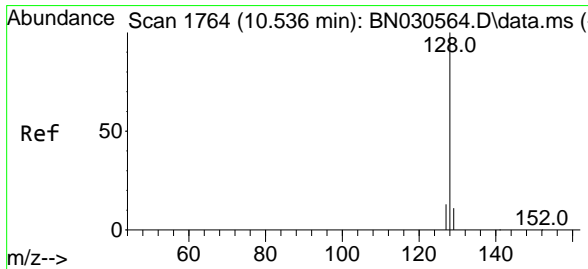
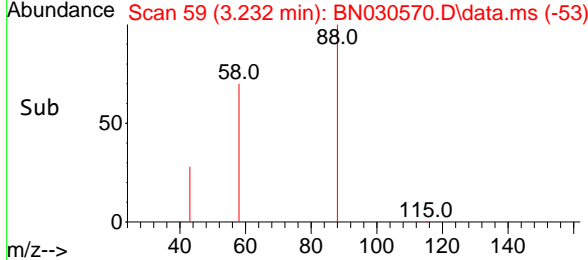
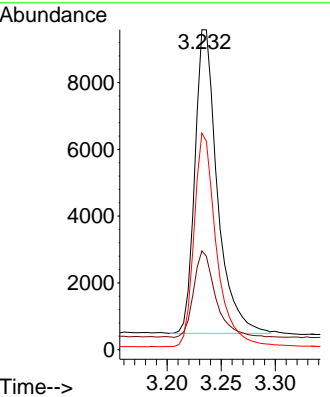
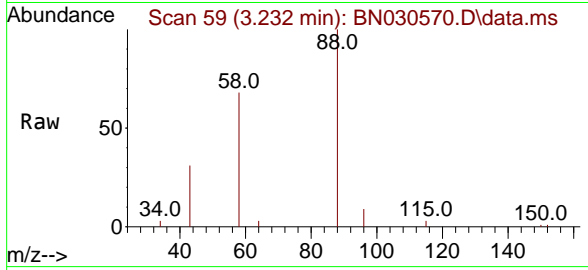


#2
 1,4-Dioxane
 Concen: 1.835 ng/u1
 RT: 3.232 min Scan# 59
 Delta R.T. -0.024 min
 Lab File: BN030570.D
 Acq: 31 Mar 2024 05:36

Instrument :
 BNA_N
 ClientSampleId :
 SLCS893

Tgt Ion: 88 Resp: 13151

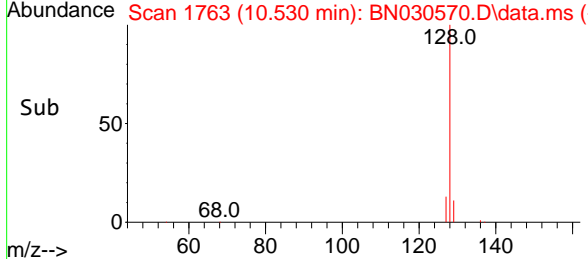
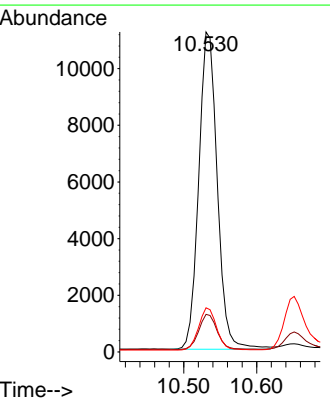
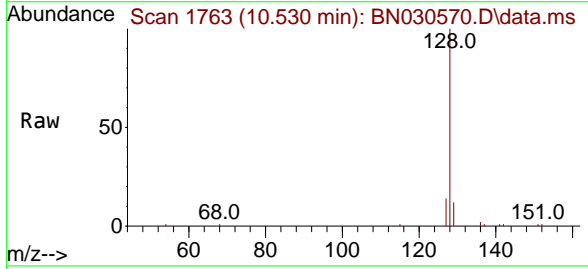
Ion	Ratio	Lower	Upper
88	100		
43	30.9	22.9	34.3
58	67.7	40.3	60.5

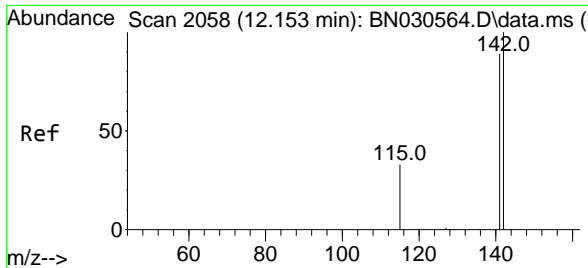


#5
 Naphthalene
 Concen: 0.363 ng/u1
 RT: 10.530 min Scan# 1763
 Delta R.T. -0.025 min
 Lab File: BN030570.D
 Acq: 31 Mar 2024 05:36

Tgt Ion: 128 Resp: 19800

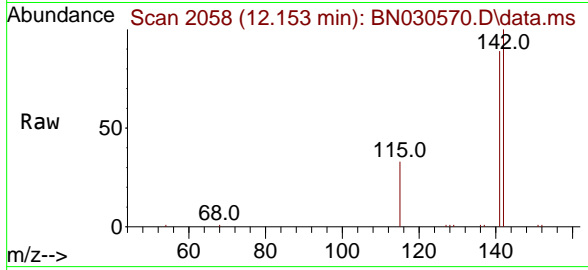
Ion	Ratio	Lower	Upper
128	100		
129	11.7	9.2	13.8
127	13.8	10.7	16.1



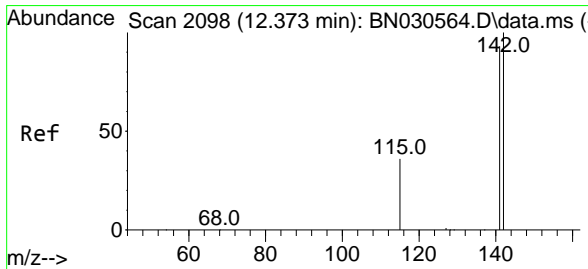
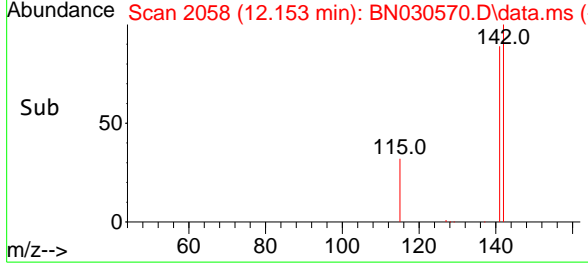
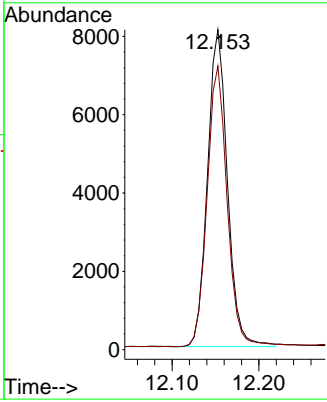


#7
 2-Methylnaphthalene
 Concen: 0.359 ng/u1
 RT: 12.153 min Scan# 2058
 Delta R.T. -0.019 min
 Lab File: BN030570.D
 Acq: 31 Mar 2024 05:36

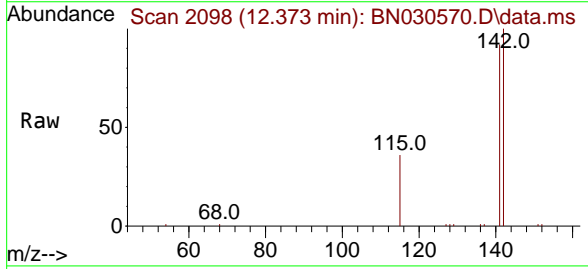
Instrument :
 BNA_N
 ClientSampleId :
 SLCS893



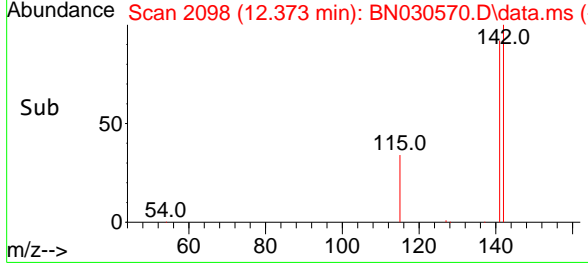
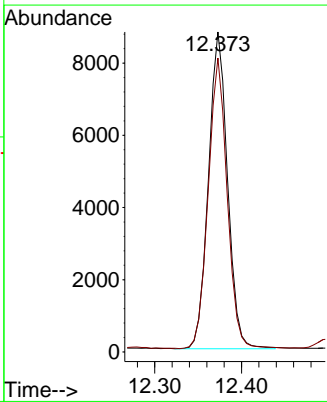
Tgt Ion:142 Resp: 12933
 Ion Ratio Lower Upper
 142 100
 141 88.9 70.4 105.6

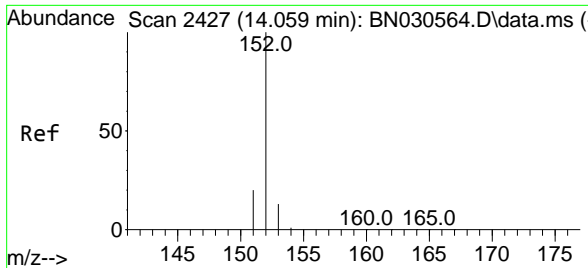


#8
 1-Methylnaphthalene
 Concen: 0.352 ng/u1
 RT: 12.373 min Scan# 2098
 Delta R.T. -0.019 min
 Lab File: BN030570.D
 Acq: 31 Mar 2024 05:36



Tgt Ion:142 Resp: 13419
 Ion Ratio Lower Upper
 142 100
 141 90.9 73.3 109.9



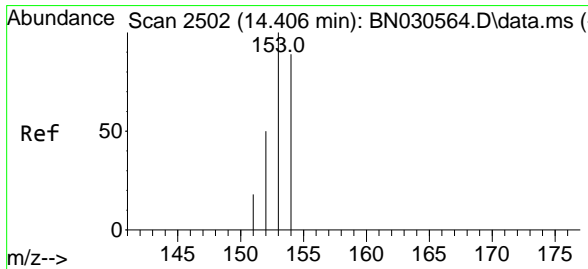
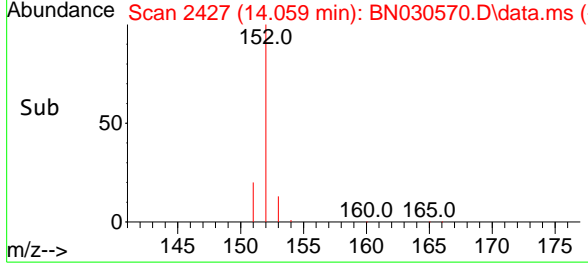
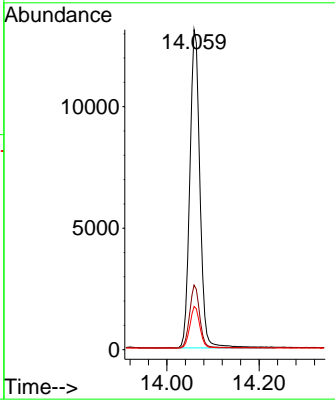
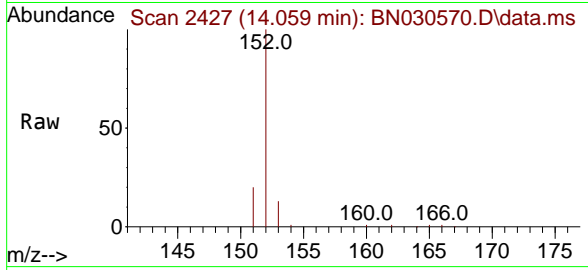


#10
 Acenaphthylene
 Concen: 0.386 ng/u1
 RT: 14.059 min Scan# 2427
 Delta R.T. -0.021 min
 Lab File: BN030570.D
 Acq: 31 Mar 2024 05:36

Instrument : BNA_N
 ClientSampleId : SLCS893

Tgt Ion:152 Resp: 19946

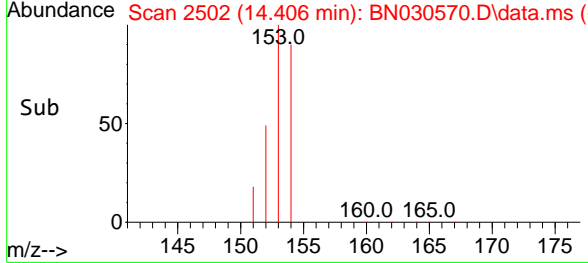
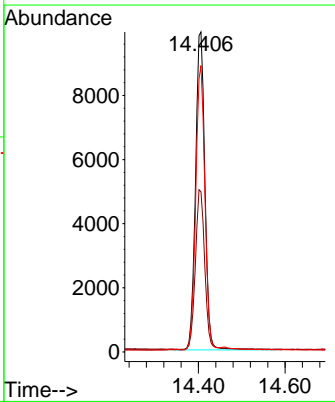
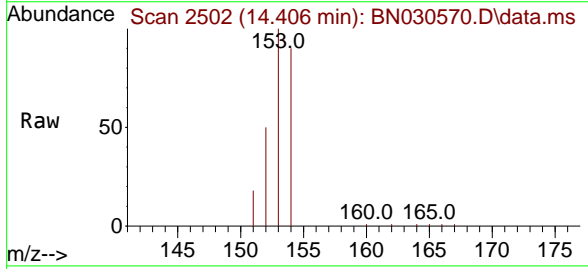
Ion	Ratio	Lower	Upper
152	100		
151	20.2	15.8	23.8
153	13.5	10.8	16.2

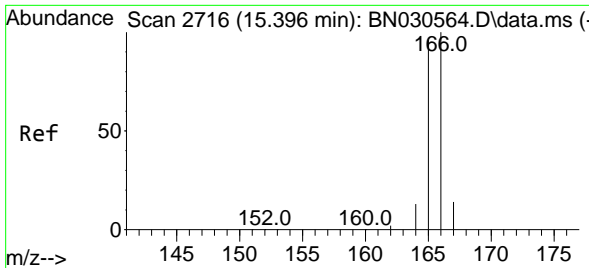


#11
 Acenaphthene
 Concen: 0.368 ng/u1
 RT: 14.406 min Scan# 2502
 Delta R.T. -0.016 min
 Lab File: BN030570.D
 Acq: 31 Mar 2024 05:36

Tgt Ion:153 Resp: 14831

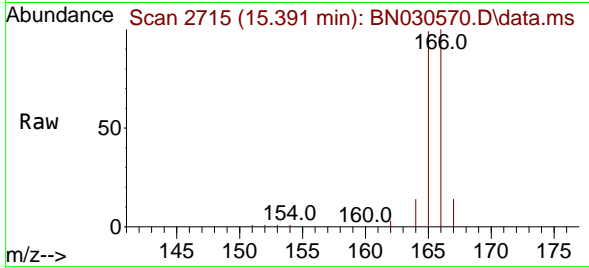
Ion	Ratio	Lower	Upper
153	100		
152	50.0	42.9	64.3
154	89.5	69.8	104.8





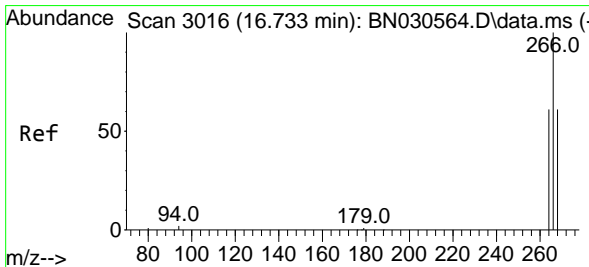
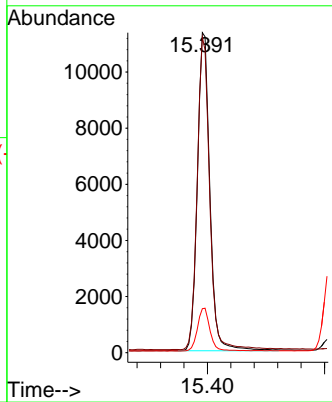
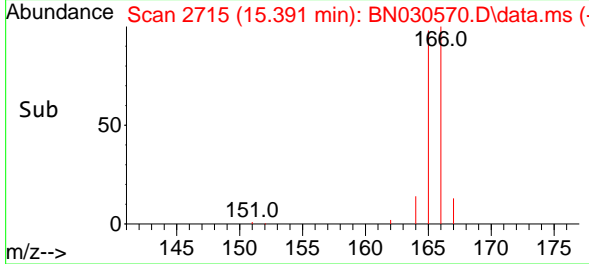
#12
 Fluorene
 Concen: 0.355 ng/u1
 RT: 15.391 min Scan# 2715
 Delta R.T. -0.021 min
 Lab File: BN030570.D
 Acq: 31 Mar 2024 05:36

Instrument : BNA_N
 ClientSampleId : SLCS893

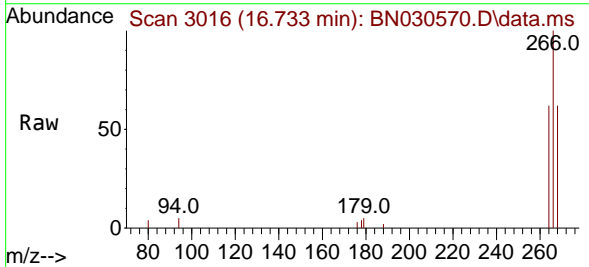


Tgt Ion:166 Resp: 16840

Ion	Ratio	Lower	Upper
166	100		
165	98.6	77.5	116.3
167	13.7	11.0	16.6

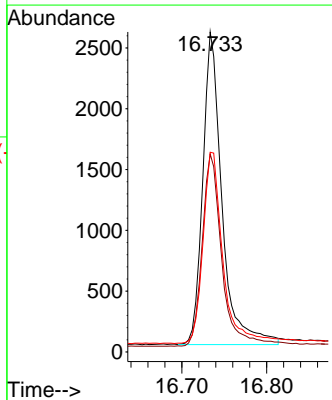
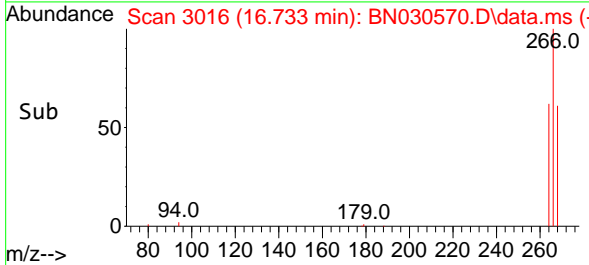


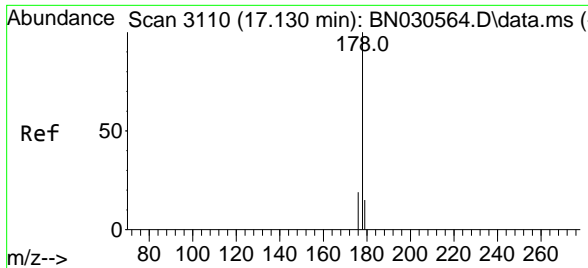
#14
 Pentachlorophenol
 Concen: 0.876 ng/u1
 RT: 16.733 min Scan# 3016
 Delta R.T. -0.015 min
 Lab File: BN030570.D
 Acq: 31 Mar 2024 05:36



Tgt Ion:266 Resp: 4042

Ion	Ratio	Lower	Upper
266	100		
264	63.0	50.0	75.0
268	63.4	51.0	76.6

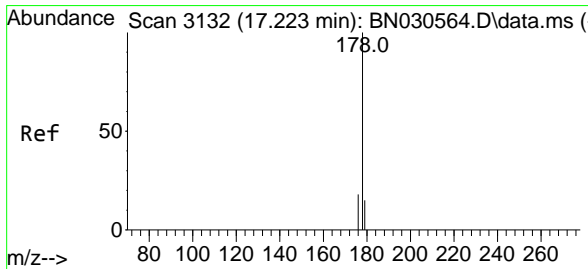
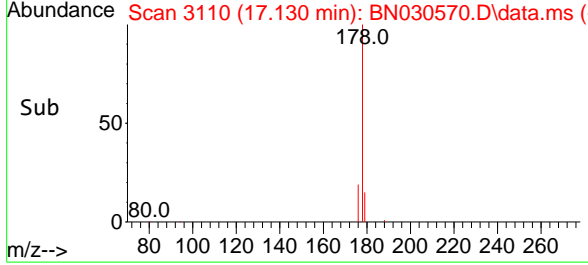
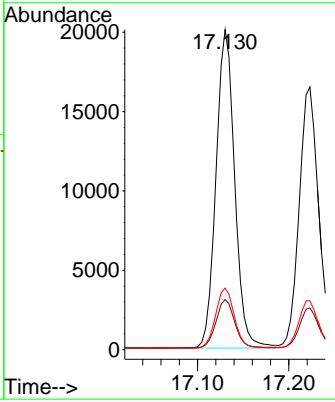
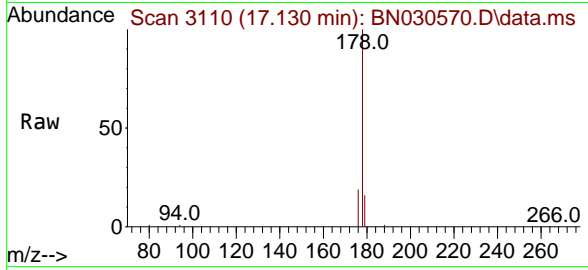




#15
 Phenanthrene
 Concen: 0.375 ng/u1
 RT: 17.130 min Scan# 3110
 Delta R.T. -0.019 min
 Lab File: BN030570.D
 Acq: 31 Mar 2024 05:36

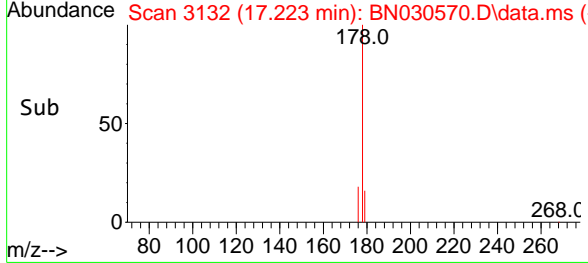
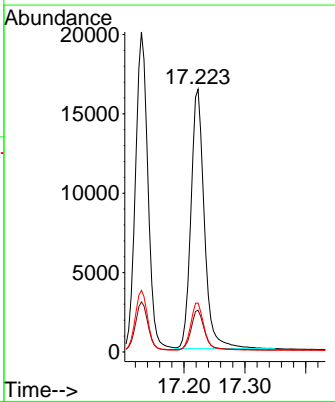
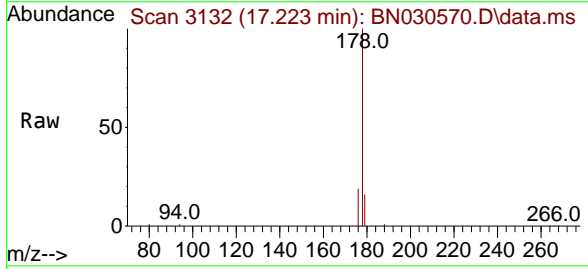
Instrument : BNA_N
 ClientSampleId : SLCS893

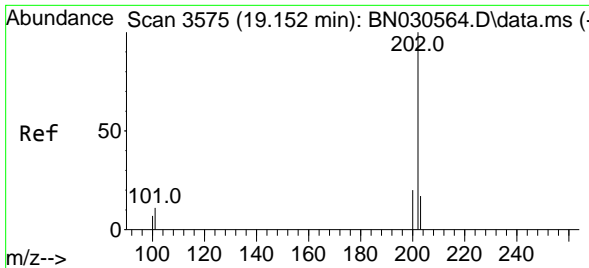
Tgt Ion	Resp	Lower	Upper
178	100		
179	15.6	12.4	18.6
176	19.2	15.4	23.0



#16
 Anthracene
 Concen: 0.393 ng/u1
 RT: 17.223 min Scan# 3132
 Delta R.T. -0.015 min
 Lab File: BN030570.D
 Acq: 31 Mar 2024 05:36

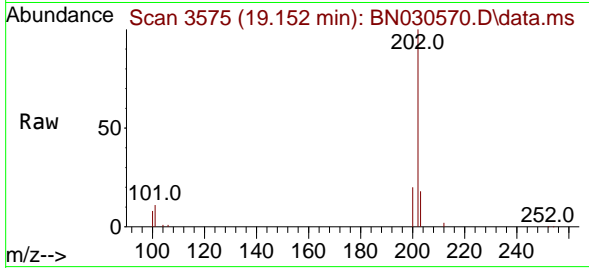
Tgt Ion	Resp	Lower	Upper
178	100		
179	15.9	12.5	18.7
176	18.7	15.3	22.9





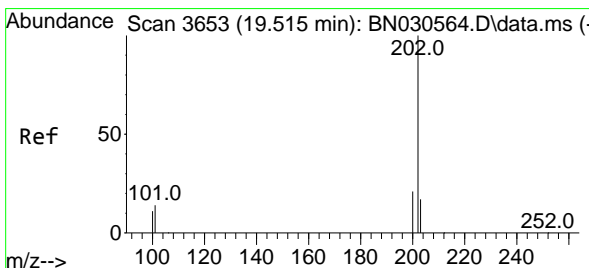
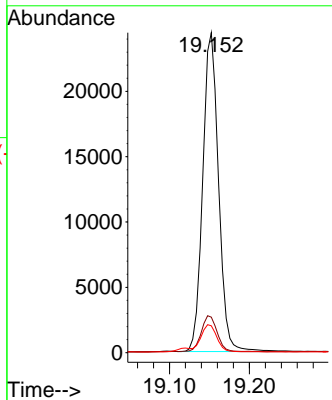
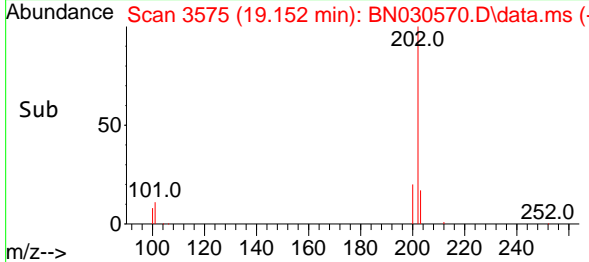
#19
 Fluoranthene
 Concen: 0.357 ng/u1
 RT: 19.152 min Scan# 31
 Delta R.T. -0.016 min
 Lab File: BN030570.D
 Acq: 31 Mar 2024 05:36

Instrument :
 BNA_N
 ClientSampleId :
 SLCS893

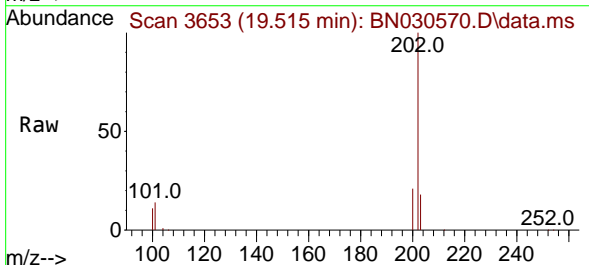


Tgt Ion:202 Resp: 33517

Ion	Ratio	Lower	Upper
202	100		
101	11.1	8.8	13.2
100	8.4	6.6	9.8

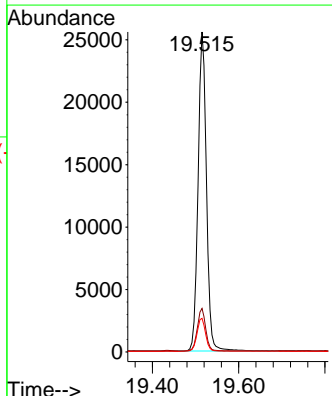
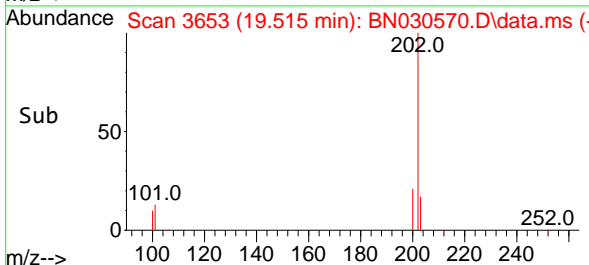


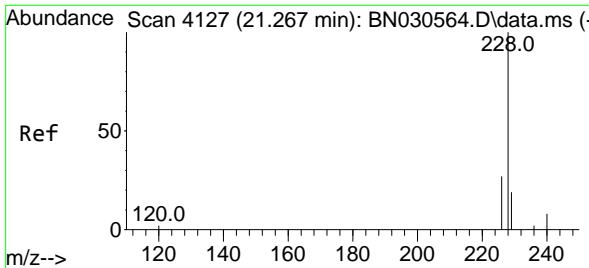
#20
 Pyrene
 Concen: 0.374 ng/u1
 RT: 19.515 min Scan# 3653
 Delta R.T. -0.016 min
 Lab File: BN030570.D
 Acq: 31 Mar 2024 05:36



Tgt Ion:202 Resp: 34540

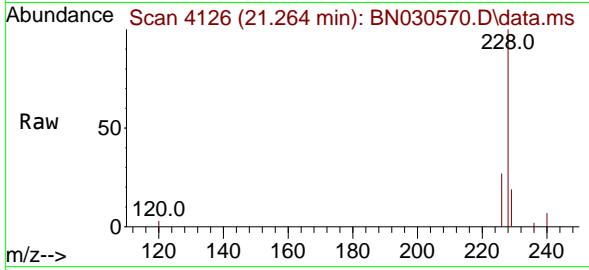
Ion	Ratio	Lower	Upper
202	100		
101	13.6	10.3	15.5
100	10.5	8.2	12.2



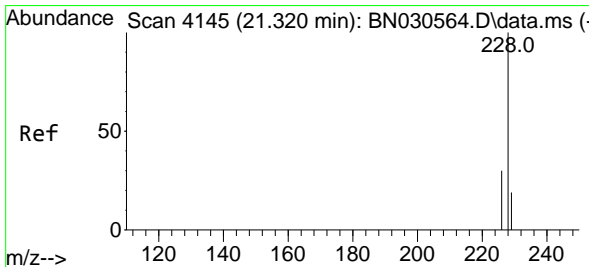
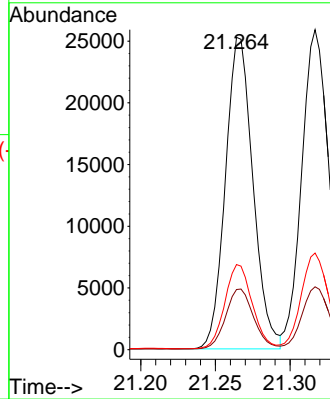
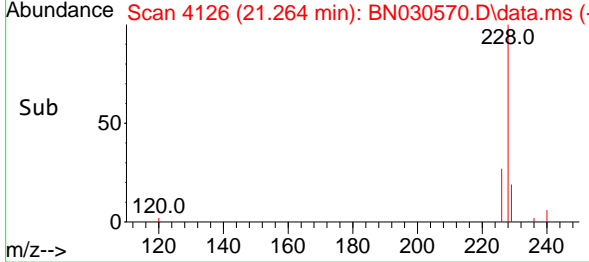


#21
 Benzo(a)anthracene
 Concen: 0.413 ng/u1
 RT: 21.264 min Scan# 4126
 Delta R.T. -0.020 min
 Lab File: BN030570.D
 Acq: 31 Mar 2024 05:36

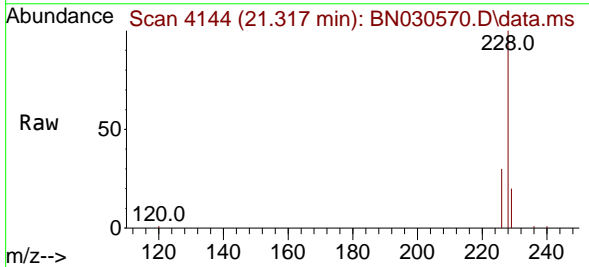
Instrument :
 BNA_N
 ClientSampleId :
 SLCS893



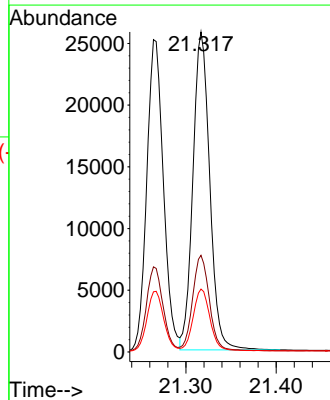
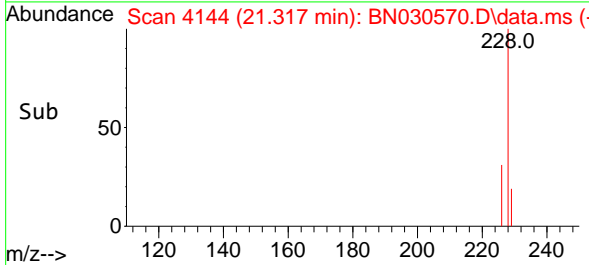
Tgt Ion:228 Resp: 32419
 Ion Ratio Lower Upper
 228 100
 229 19.3 15.7 23.5
 226 27.3 21.5 32.3

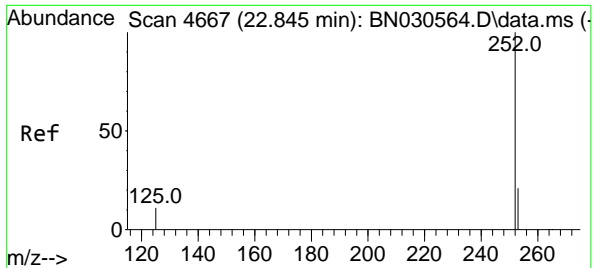


#22
 Chrysene
 Concen: 0.384 ng/u1
 RT: 21.317 min Scan# 4144
 Delta R.T. -0.017 min
 Lab File: BN030570.D
 Acq: 31 Mar 2024 05:36



Tgt Ion:228 Resp: 33254
 Ion Ratio Lower Upper
 228 100
 226 30.2 24.1 36.1
 229 19.6 15.6 23.4



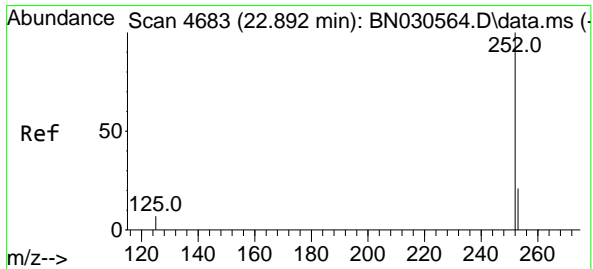
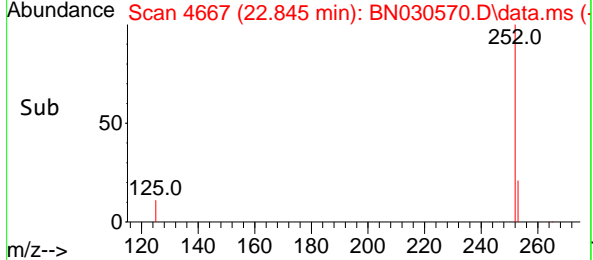
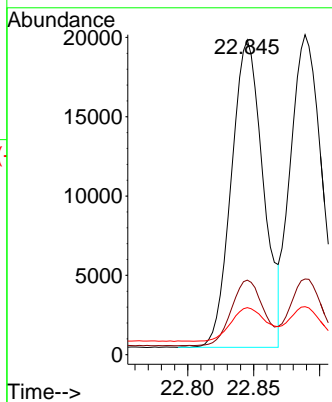
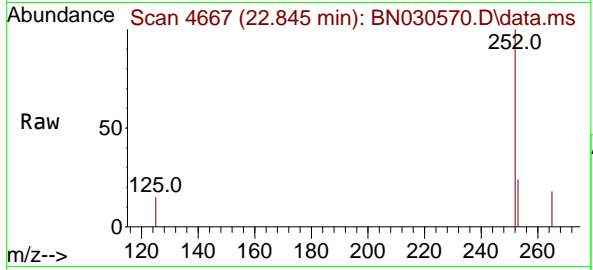


#24
 Benzo(b)fluoranthene
 Concen: 0.365 ng/u1
 RT: 22.845 min Scan# 4667
 Delta R.T. -0.023 min
 Lab File: BN030570.D
 Acq: 31 Mar 2024 05:36

Instrument : BNA_N
 ClientSampleId : SLCS893

Tgt Ion:252 Resp: 32619

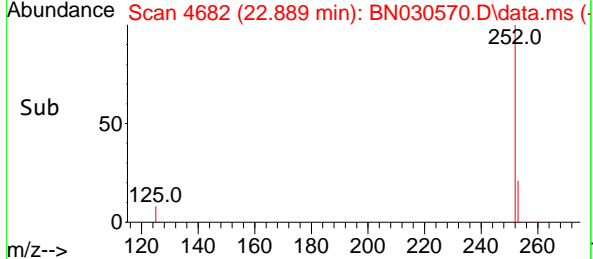
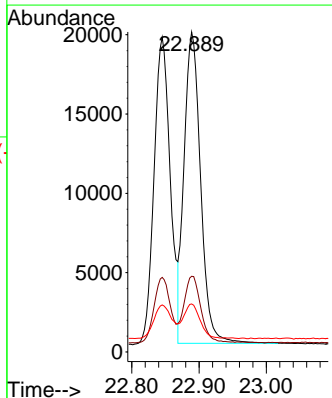
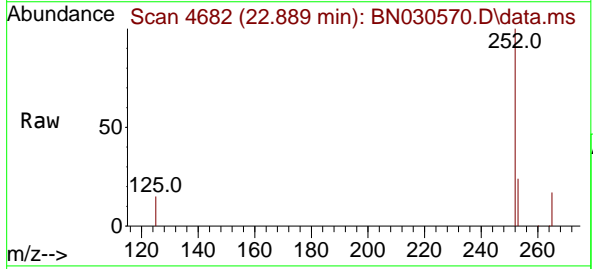
Ion	Ratio	Lower	Upper
252	100		
253	23.7	0.0	47.4
125	15.0	0.0	28.4

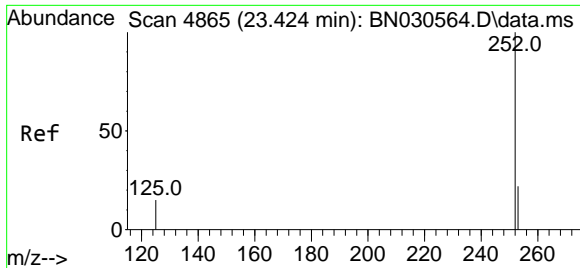


#25
 Benzo(k)fluoranthene
 Concen: 0.355 ng/u1
 RT: 22.889 min Scan# 4682
 Delta R.T. -0.026 min
 Lab File: BN030570.D
 Acq: 31 Mar 2024 05:36

Tgt Ion:252 Resp: 33450

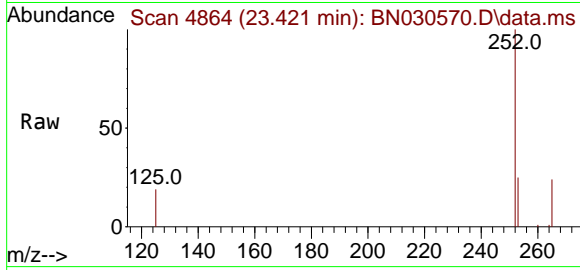
Ion	Ratio	Lower	Upper
252	100		
253	23.7	19.0	28.4
125	15.0	11.6	17.4





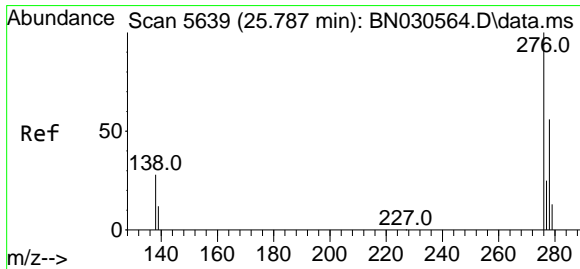
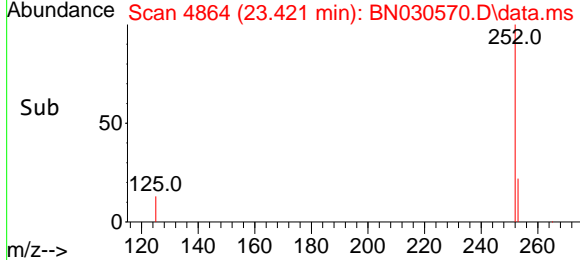
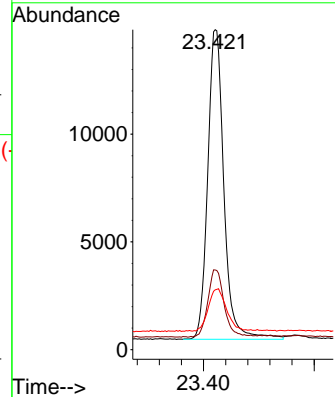
#26
 Benzo(a)pyrene
 Concen: 0.403 ng/u1
 RT: 23.421 min Scan# 4864
 Delta R.T. -0.026 min
 Lab File: BN030570.D
 Acq: 31 Mar 2024 05:36

Instrument : BNA_N
 ClientSampleId : SLCS893



Tgt Ion:252 Resp: 29172

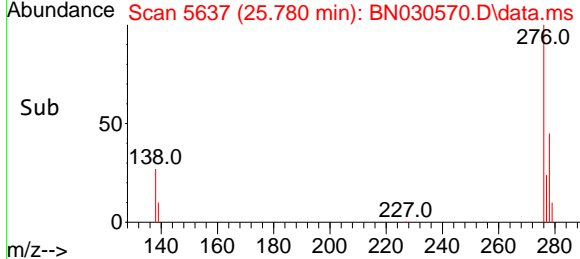
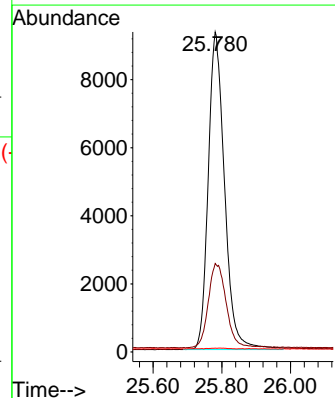
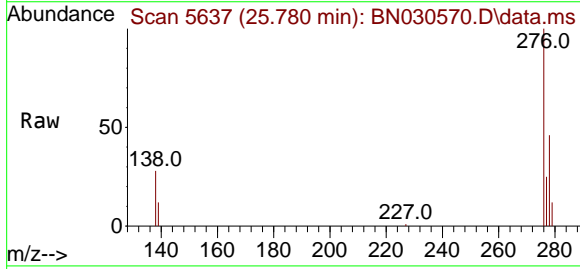
Ion	Ratio	Lower	Upper
252	100		
253	24.9	19.6	29.4
125	18.7	14.3	21.5

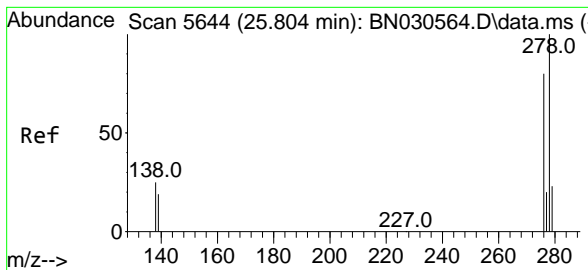


#27
 Indeno(1,2,3-cd)pyrene
 Concen: 0.376 ng/u1
 RT: 25.780 min Scan# 5637
 Delta R.T. -0.040 min
 Lab File: BN030570.D
 Acq: 31 Mar 2024 05:36

Tgt Ion:276 Resp: 30829

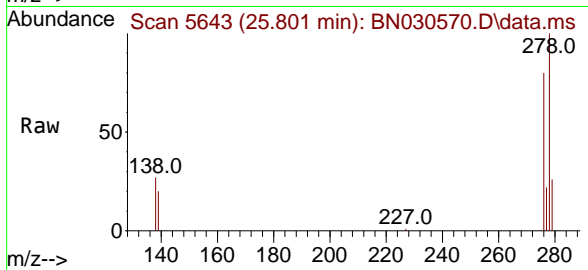
Ion	Ratio	Lower	Upper
276	100		
138	29.5	23.3	34.9
227	0.1	0.1	0.1



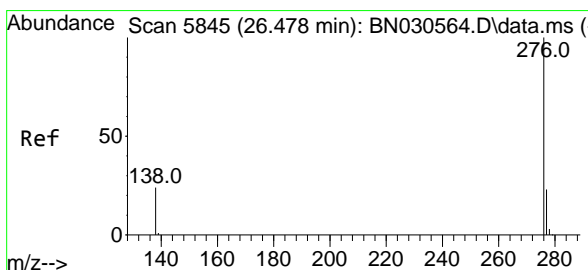
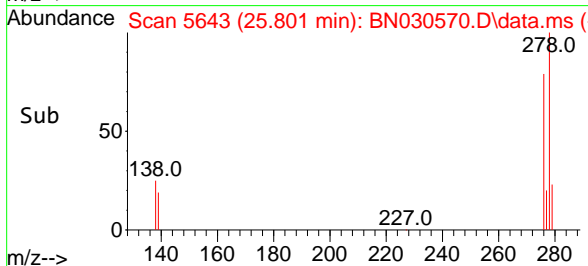
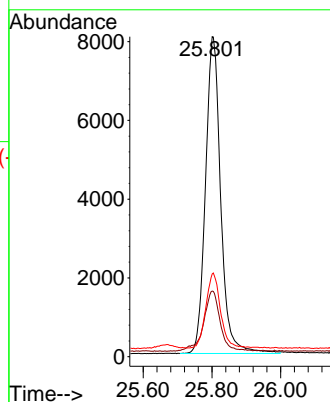


#28
 Dibenzo(a,h)anthracene
 Concen: 0.381 ng/ul
 RT: 25.801 min Scan# 5643
 Delta R.T. -0.043 min
 Lab File: BN030570.D
 Acq: 31 Mar 2024 05:36

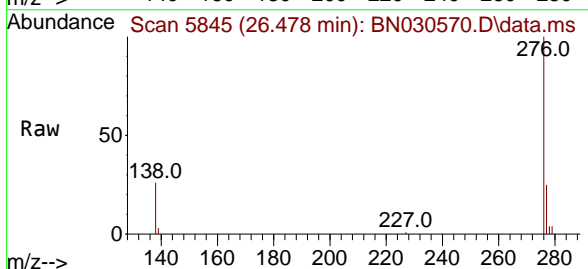
Instrument : BNA_N
 ClientSampleId : SLCS893



Tgt Ion:278 Resp: 24791
 Ion Ratio Lower Upper
 278 100
 139 20.5 16.5 24.7
 279 25.8 21.6 32.4



#29
 Benzo(g,h,i)perylene
 Concen: 0.345 ng/ul
 RT: 26.478 min Scan# 5845
 Delta R.T. -0.036 min
 Lab File: BN030570.D
 Acq: 31 Mar 2024 05:36



Tgt Ion:276 Resp: 24011
 Ion Ratio Lower Upper
 276 100
 138 26.3 21.1 31.7
 277 24.8 19.8 29.8

