

Data Path : Z:\svoasrv\HPCHEM1\BNA_N\Data\BN041423\
 Data File : BN024898.D
 Acq On : 14 Apr 2023 15:17
 Operator : CG/JU
 Sample : 02252-06
 Misc :
 ALS Vial : 44 Sample Multiplier: 1

Instrument :
 BNA_N
 ClientSampleId :
 COME2

Integration Parameters: LSCINT.P

Integrator: RTE
 Smoothing : OFF Filtering: 5
 Sampling : 1 Min Area: 0.1 % of largest Peak
 Start Thrs: 0.2 Max Peaks: 100
 Stop Thrs : 0 Peak Location: TOP

If leading or trailing edge < 100 prefer < Baseline drop else tangent >
 Peak separation: 5

Method : Z:\svoasrv\HPCHEM1\BNA_N\Methods\SFAM-EPA-BN041023.M
 Title : SVOA CALIBRATION

Signal : TIC: BN024898.D\data.ms

peak #	R.T. min	first scan	max scan	last scan	PK TY	peak height	corr. area	corr. % max.	% of total
1	3.311	16	21	31	rVB	57905	100121	1.07%	0.105%
2	3.746	93	95	109	rBV	217289	404257	4.33%	0.425%
3	3.976	131	134	139	rVB3	9305	13132	0.14%	0.014%
4	4.070	146	150	155	rBV	24081	35544	0.38%	0.037%
5	5.011	308	310	319	rVB7	5639	10154	0.11%	0.011%
6	5.223	337	346	357	rBV	2185312	3394952	36.32%	3.568%
7	6.922	625	635	638	rBV8	6831	18552	0.20%	0.019%
8	7.099	656	665	676	rVB	323880	519820	5.56%	0.546%
9	7.269	686	694	707	rBV	1097519	1759889	18.83%	1.850%
10	7.469	720	728	738	rBV	1072133	1746676	18.69%	1.836%
11	7.552	738	742	747	rVB4	8551	13755	0.15%	0.014%
12	7.828	783	789	795	rVB	58814	94067	1.01%	0.099%
13	7.940	800	808	811	rVV	1239508	2079617	22.25%	2.186%
14	7.975	811	814	823	rVB	1367839	2015639	21.56%	2.118%
15	8.293	861	868	876	rBV	532218	846614	9.06%	0.890%
16	8.552	903	912	914	rBV7	7317	14087	0.15%	0.015%
17	8.652	922	929	941	rBV	893296	1421350	15.21%	1.494%
18	9.111	996	1007	1021	rBV	1398950	2302634	24.64%	2.420%
19	9.216	1021	1025	1028	rVV5	6841	11828	0.13%	0.012%
20	9.263	1030	1033	1040	rVB7	7663	13072	0.14%	0.014%
21	9.516	1071	1076	1078	rBV2	8071	11514	0.12%	0.012%
22	9.563	1078	1084	1094	rVB	304296	502834	5.38%	0.528%
23	9.834	1121	1130	1136	rBV	1147997	1850208	19.79%	1.944%
24	9.893	1136	1140	1148	rVB	62194	103585	1.11%	0.109%
25	9.993	1153	1157	1161	rVB3	12482	20833	0.22%	0.022%
26	10.369	1214	1221	1234	rBV	1533437	2528471	27.05%	2.657%
27	10.616	1255	1263	1268	rBV2	29475	51115	0.55%	0.054%
28	10.681	1268	1274	1279	rVV	32978	58281	0.62%	0.061%
29	10.752	1279	1286	1297	rVB	1755012	2887271	30.89%	3.034%
30	10.893	1301	1310	1326	rVB	708257	1207989	12.92%	1.270%
31	11.134	1347	1351	1358	rVB9	5210	10527	0.11%	0.011%
32	11.310	1373	1381	1391	rBV	88285	164359	1.76%	0.173%
33	11.410	1392	1398	1404	rVV2	64988	107492	1.15%	0.113%
34	11.540	1415	1420	1425	rBV5	12832	26458	0.28%	0.028%
35	11.810	1462	1466	1472	rVB7	6145	12091	0.13%	0.013%
36	11.922	1477	1485	1491	rVV8	9166	14997	0.16%	0.016%

Data Path : Z:\svoasrv\HPCHEM1\BNA_N\Data\BN041423\
 Data File : BN024898.D
 Acq On : 14 Apr 2023 15:17
 Operator : CG/JU
 Sample : 02252-06
 Misc :
 ALS Vial : 44 Sample Multiplier: 1

Instrument :
 BNA_N
 ClientSampleId :
 COME2

Integration Parameters: LSCINT.P

Integrator: RTE
 Smoothing : OFF Filtering: 5
 Sampling : 1 Min Area: 0.1 % of largest Peak
 Start Thrs: 0.2 Max Peaks: 100
 Stop Thrs : 0 Peak Location: TOP

If leading or trailing edge < 100 prefer < Baseline drop else tangent >
 Peak separation: 5

Method : Z:\svoasrv\HPCHEM1\BNA_N\Methods\SFAM-EPA-BN041023.M
 Title : SVOA CALIBRATION

37	12.010	1495	1500	1506	rBV7	8854	18053	0.19%	0.019%
38	12.169	1519	1527	1531	rBV7	10212	22053	0.24%	0.023%
39	12.252	1536	1541	1546	rVB7	8917	20014	0.21%	0.021%
40	12.340	1546	1556	1561	rBV2	27835	56271	0.60%	0.059%
41	12.434	1569	1572	1576	rBV6	6179	11014	0.12%	0.012%
42	12.481	1576	1580	1584	rVV5	10913	15781	0.17%	0.017%
43	12.563	1587	1594	1598	rBV	32613	57836	0.62%	0.061%
44	12.599	1598	1600	1605	rVB4	16545	19367	0.21%	0.020%
45	12.693	1611	1616	1623	rBV4	22655	37195	0.40%	0.039%
46	12.840	1636	1641	1649	rBV3	32775	65323	0.70%	0.069%
47	12.940	1654	1658	1663	rVB8	9020	13253	0.14%	0.014%
48	13.099	1680	1685	1689	rBV7	6019	10222	0.11%	0.011%
49	13.399	1729	1736	1744	rVV	982183	1384330	14.81%	1.455%
50	13.528	1752	1758	1764	rBV	33712	57996	0.62%	0.061%
51	13.599	1764	1770	1781	rVB	590208	833316	8.92%	0.876%
52	13.775	1797	1800	1805	rVB3	11132	15494	0.17%	0.016%
53	13.910	1818	1823	1829	rBV8	8660	17715	0.19%	0.019%
54	13.993	1829	1837	1843	rVV	3191842	4362310	46.67%	4.584%
55	14.040	1843	1845	1849	rVV4	29859	47786	0.51%	0.050%
56	14.099	1853	1855	1861	rVB6	9541	15332	0.16%	0.016%
57	14.281	1873	1886	1893	rBV	3307805	4886016	52.27%	5.135%
58	14.340	1893	1896	1903	rVB	138502	202376	2.17%	0.213%
59	14.481	1914	1920	1926	rVB	52043	83168	0.89%	0.087%
60	14.587	1926	1938	1945	rBV	2725007	4058746	43.42%	4.265%
61	14.781	1965	1971	1986	rBV	271619	463599	4.96%	0.487%
62	14.987	2004	2006	2012	rBV6	10227	17637	0.19%	0.019%
63	15.398	2073	2076	2084	rVB6	7027	14838	0.16%	0.016%
64	15.575	2098	2106	2113	rBV	4324758	6199319	66.32%	6.515%
65	15.693	2118	2126	2142	rVV	1821987	2408080	25.76%	2.531%
66	15.816	2143	2147	2153	rVB3	26752	38992	0.42%	0.041%
67	15.940	2162	2168	2179	rVB	365936	474700	5.08%	0.499%
68	16.357	2235	2239	2242	rBV6	7540	9643	0.10%	0.010%
69	16.722	2296	2301	2305	rBV7	10332	17972	0.19%	0.019%
70	17.004	2347	2349	2354	rVB6	8912	11119	0.12%	0.012%
71	17.334	2398	2405	2413	rBV	3219969	4614499	49.37%	4.850%
72	17.434	2415	2422	2431	rBV2	4997841	7300111	78.10%	7.672%
73	17.610	2449	2452	2460	rVB7	12550	22840	0.24%	0.024%
74	17.716	2466	2470	2473	rBV5	9665	14863	0.16%	0.016%
75	18.222	2551	2556	2565	rBV	272061	406774	4.35%	0.427%
76	18.310	2567	2571	2577	rVB4	56755	97321	1.04%	0.102%

Data Path : Z:\svoasrv\HPCHEM1\BNA_N\Data\BN041423\
 Data File : BN024898.D
 Acq On : 14 Apr 2023 15:17
 Operator : CG/JU
 Sample : 02252-06
 Misc :
 ALS Vial : 44 Sample Multiplier: 1

Instrument :
 BNA_N
 ClientSampleId :
 COME2

Integration Parameters: LSCINT.P

Integrator: RTE
 Smoothing : OFF Filtering: 5
 Sampling : 1 Min Area: 0.1 % of largest Peak
 Start Thrs: 0.2 Max Peaks: 100
 Stop Thrs : 0 Peak Location: TOP

If leading or trailing edge < 100 prefer < Baseline drop else tangent >
 Peak separation: 5

Method : Z:\svoasrv\HPCHEM1\BNA_N\Methods\SFAM-EPA-BN041023.M
 Title : SVOA CALIBRATION

77	19.286	2733	2737	2744	rBV	68991	107458	1.15%	0.113%
78	19.363	2744	2750	2755	rBV	73964	132959	1.42%	0.140%
79	19.498	2768	2773	2785	rBV	379127	578899	6.19%	0.608%
80	19.728	2805	2812	2819	rBV	6475997	8690532	92.98%	9.133%
81	21.222	3062	3066	3074	rBV	200138	318006	3.40%	0.334%
82	21.522	3112	3117	3124	rBV	3952509	5022110	53.73%	5.278%
83	22.792	3330	3333	3338	rVB	231285	295669	3.16%	0.311%
84	23.210	3401	3404	3409	rVB2	153399	226825	2.43%	0.238%
85	23.827	3501	3509	3519	rBV2	4582475	9346942	100.00%	9.823%
86	23.980	3528	3535	3546	rVB	2564785	5270977	56.39%	5.539%
87	24.598	3637	3640	3647	rVB3	205771	366189	3.92%	0.385%

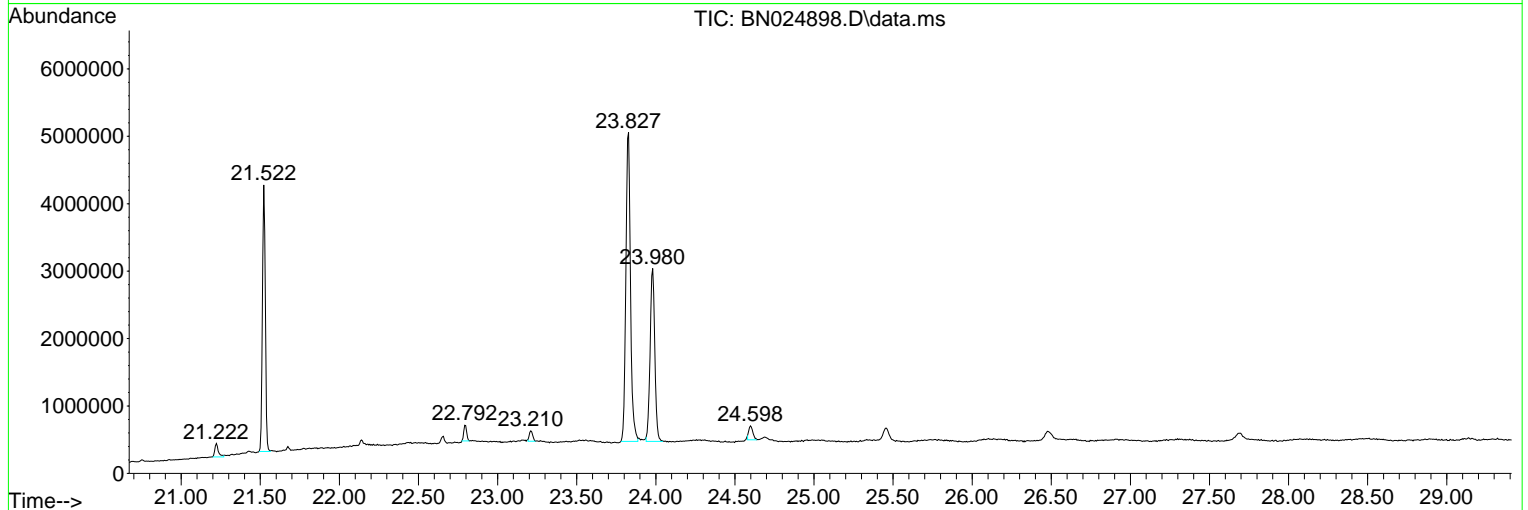
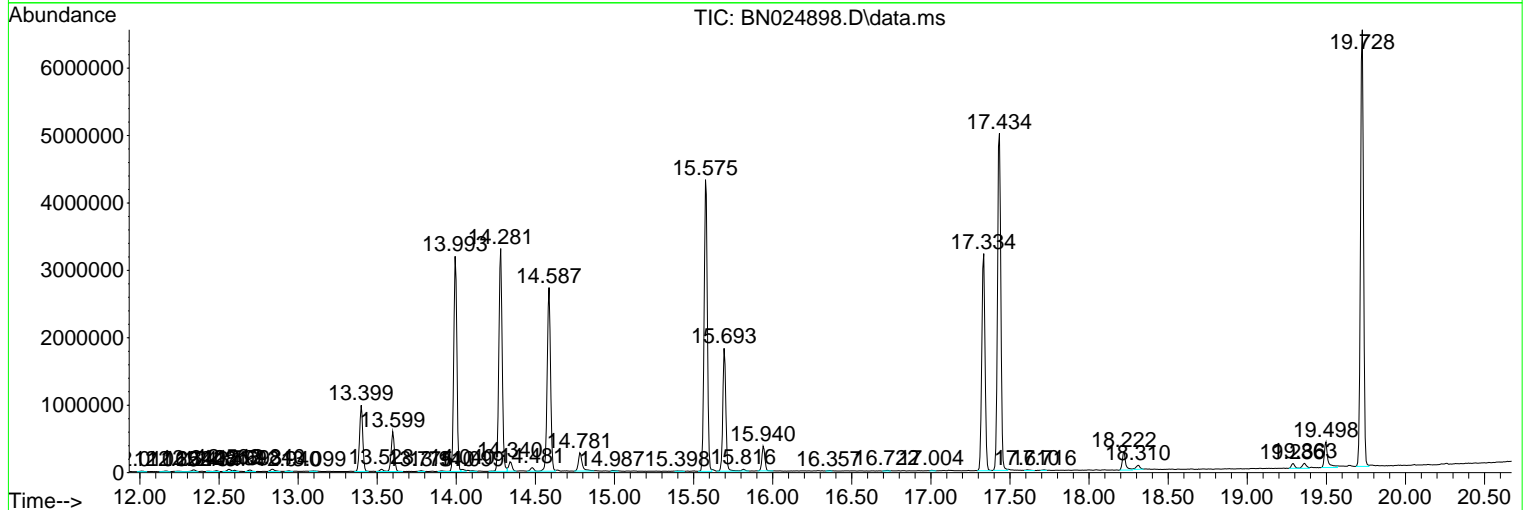
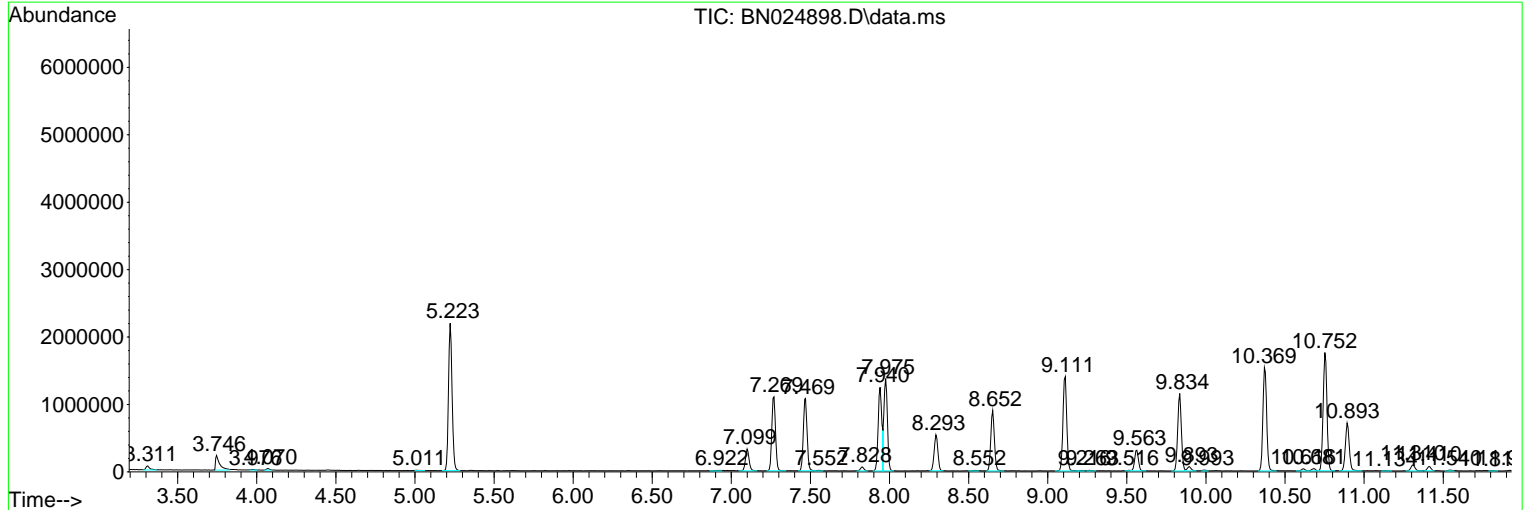
Sum of corrected areas: 95153625

Data Path : Z:\svoasrv\HPCHEM1\BNA_N\Data\BN041423\
 Data File : BN024898.D
 Acq On : 14 Apr 2023 15:17
 Operator : CG/JU
 Sample : 02252-06
 Misc :
 ALS Vial : 44 Sample Multiplier: 1

Instrument :
 BNA_N
ClientSampleId :
 COME2

Quant Method : Z:\svoasrv\HPCHEM1\BNA_N\Methods\SFAM-EPA-BN041023.M
 Quant Title : SVOA CALIBRATION

TIC Library : C:\Database\NIST20.L
 TIC Integration Parameters: LSCINT.P



Data Path : Z:\svoasrv\HPCHEM1\BNA_N\Data\BN041423\
 Data File : BN024898.D
 Acq On : 14 Apr 2023 15:17
 Operator : CG/JU
 Sample : 02252-06
 Misc :
 ALS Vial : 44 Sample Multiplier: 1

Instrument :
 BNA_N
 ClientSampleId :
 COME2

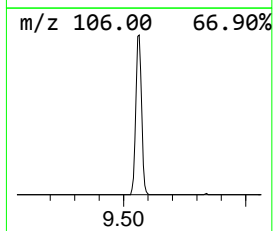
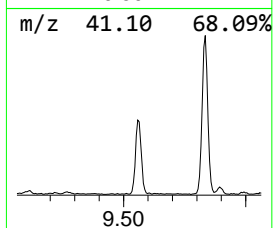
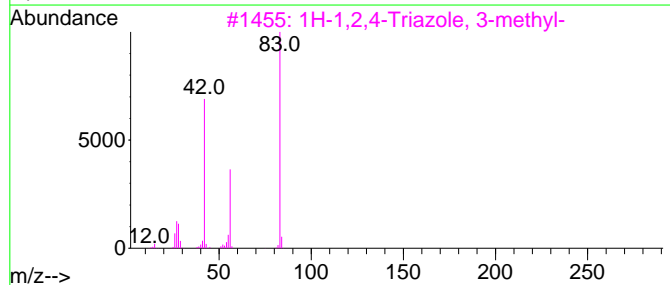
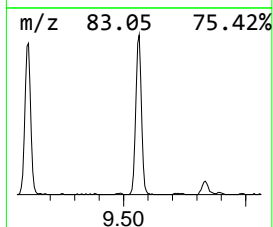
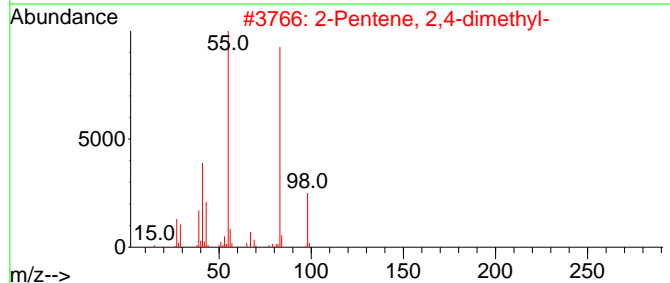
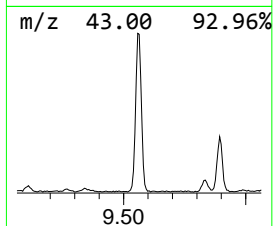
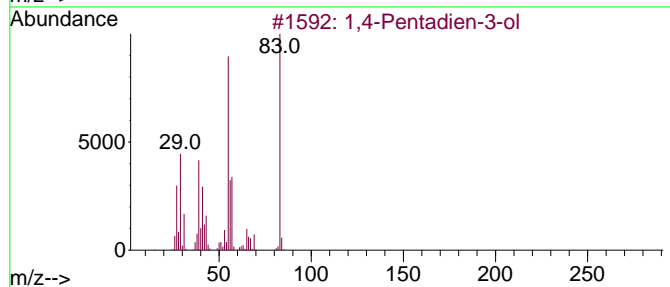
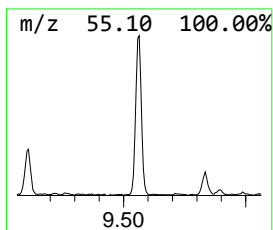
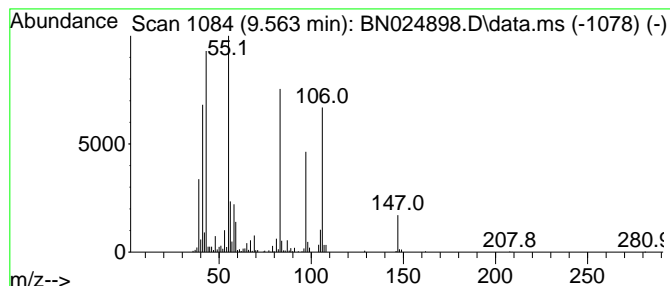
Quant Method : Z:\svoasrv\HPCHEM1\BNA_N\Methods\SFAM-EPA-BN041023.M
 Quant Title : SVOA CALIBRATION

TIC Library : C:\Database\NIST20.L
 TIC Integration Parameters: LSCINT.P

 Peak Number 3 unknown-01 Concentration Rank 5

R.T.	EstConc	Area	Relative to ISTD	R.T.
9.563	3.48 ng/ul	502834	Naphthalene-d8	10.752

Hit#	of 5	Tentative ID	MW	MolForm	CAS#	Qual
1		1,4-Pentadien-3-ol	84	C5H8O	000922-65-6	30
2		2-Pentene, 2,4-dimethyl-	98	C7H14	000625-65-0	30
3		1H-1,2,4-Triazole, 3-methyl-	83	C3H5N3	007170-01-6	27
4		3-Penten-2-one, 4-methyl-	98	C6H10O	000141-79-7	27
5		2-Pentene, 4,4-dimethyl-, (Z)-	98	C7H14	000762-63-0	27



Data Path : Z:\svoasrv\HPCHEM1\BNA_N\Data\BN041423\
 Data File : BN024898.D
 Acq On : 14 Apr 2023 15:17
 Operator : CG/JU
 Sample : 02252-06
 Misc :
 ALS Vial : 44 Sample Multiplier: 1

Instrument :
 BNA_N
 ClientSampleId :
 COME2

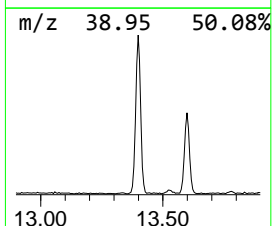
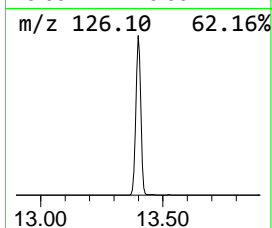
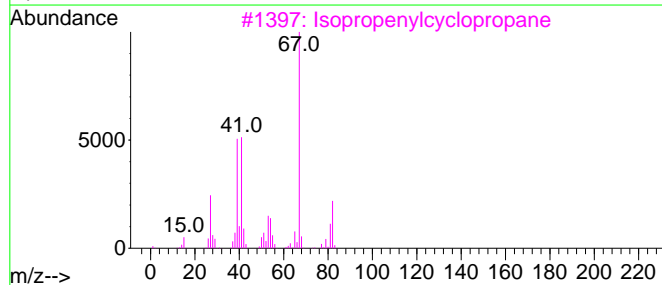
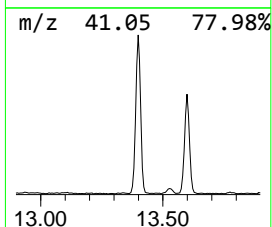
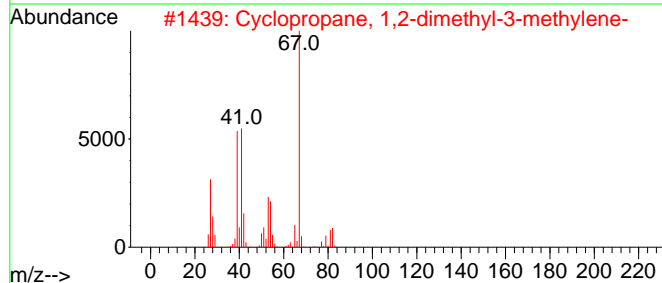
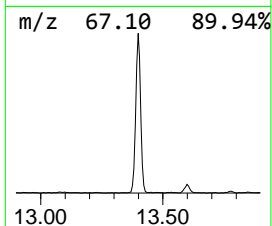
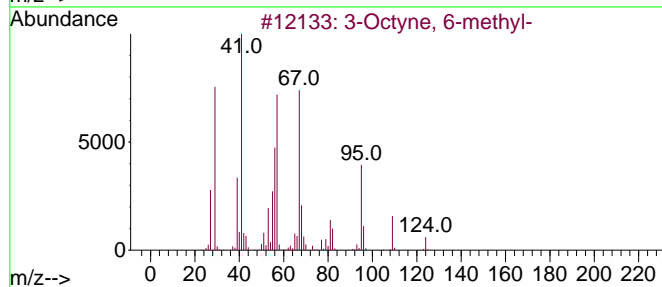
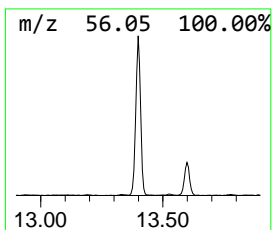
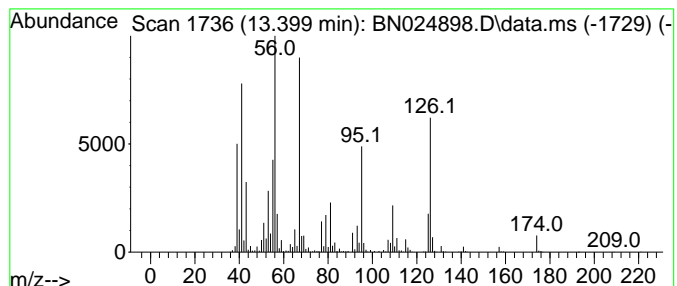
Quant Method : Z:\svoasrv\HPCHEM1\BNA_N\Methods\SFAM-EPA-BN041023.M
 Quant Title : SVOA CALIBRATION

TIC Library : C:\Database\NIST20.L
 TIC Integration Parameters: LSCINT.P

 Peak Number 4 unknown-02 Concentration Rank 3

R.T.	EstConc	Area	Relative to ISTD	R.T.
13.399	6.82 ng/ul	1384330	Acenaphthene-d10	14.587

Hit#	of	5	Tentative ID	MW	MolForm	CAS#	Qual
1			3-Octyne, 6-methyl-	124	C9H16	062108-34-3	47
2			Cyclopropane, 1,2-dimethyl-3-met...	82	C6H10	062338-02-7	38
3			Isopropenylcyclopropane	82	C6H10	004663-22-3	27
4			1H-Pyrazole-3,4-diamine, 1,5-dim...	126	C5H10N4	076368-87-1	27
5			3-Octyne, 7-methyl-	124	C9H16	037050-06-9	25



Data Path : Z:\svoasrv\HPCHEM1\BNA_N\Data\BN041423\
 Data File : BN024898.D
 Acq On : 14 Apr 2023 15:17
 Operator : CG/JU
 Sample : 02252-06
 Misc :
 ALS Vial : 44 Sample Multiplier: 1

Instrument :
 BNA_N
 ClientSampleId :
 COME2

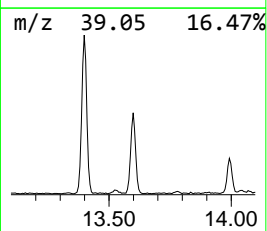
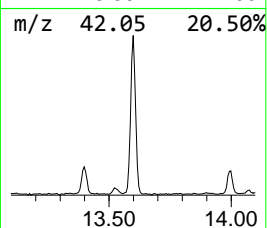
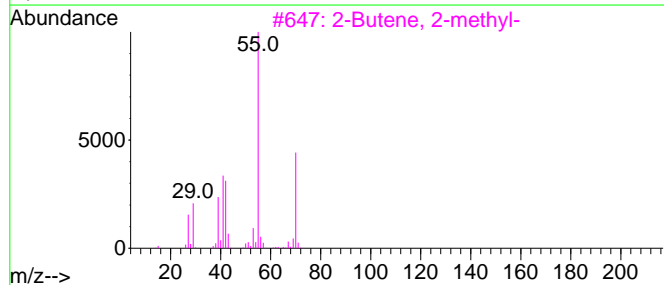
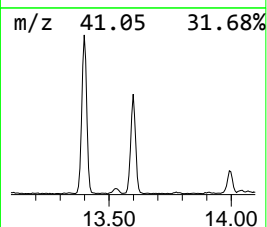
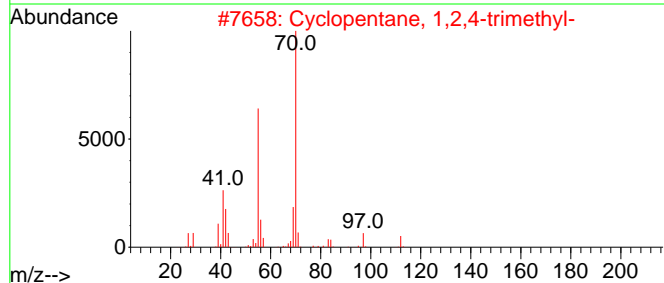
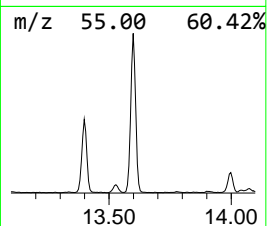
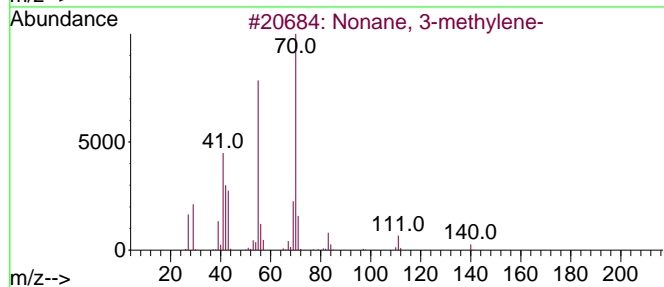
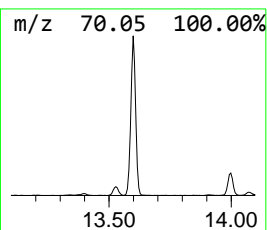
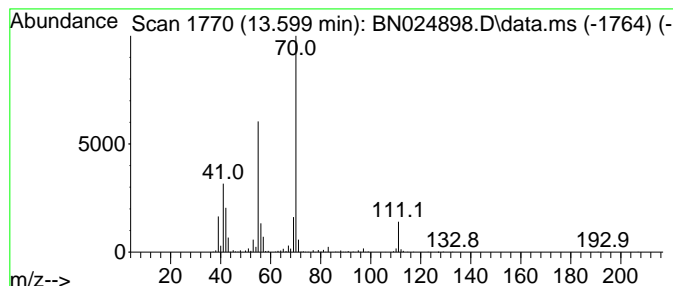
Quant Method : Z:\svoasrv\HPCHEM1\BNA_N\Methods\SFAM-EPA-BN041023.M
 Quant Title : SVOA CALIBRATION

TIC Library : C:\Database\NIST20.L
 TIC Integration Parameters: LSCINT.P

 Peak Number 5 (DEL) Alkane: Straight-Chai... Concentration Rank 4

R.T.	EstConc	Area	Relative to ISTD	R.T.
13.599	4.11 ng/ul	833316	Acenaphthene-d10	14.587

Hit#	of 5	Tentative ID	MW	MolForm	CAS#	Qual
1		Nonane, 3-methylene-	140	C10H20	051655-64-2	72
2		Cyclopentane, 1,2,4-trimethyl-	112	C8H16	002815-58-9	64
3		2-Butene, 2-methyl-	70	C5H10	000513-35-9	59
4		3,3-Dimethyl-1,2-epoxybutane	100	C6H12O	002245-30-9	59
5		Cyclopentane, 1,2,4-trimethyl-, ...	112	C8H16	004850-28-6	56



Data Path : Z:\svoasrv\HPCHEM1\BNA_N\Data\BN041423\
 Data File : BN024898.D
 Acq On : 14 Apr 2023 15:17
 Operator : CG/JU
 Sample : 02252-06
 Misc :
 ALS Vial : 44 Sample Multiplier: 1

Instrument :
 BNA_N
 ClientSampleId :
 COME2

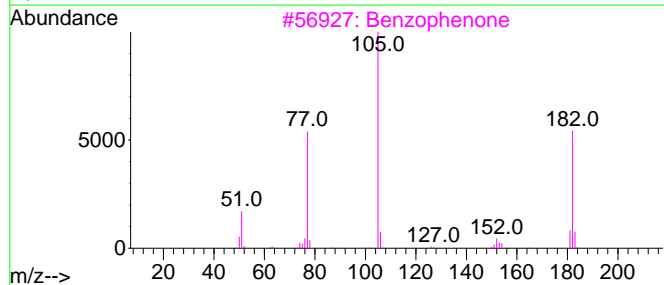
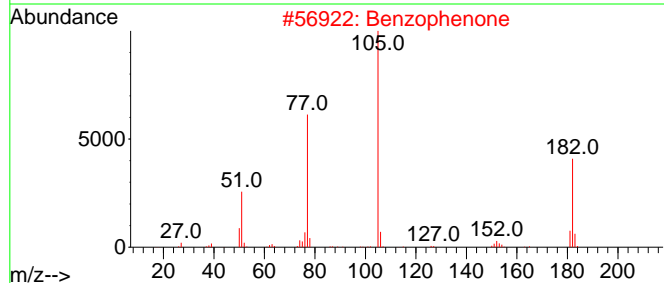
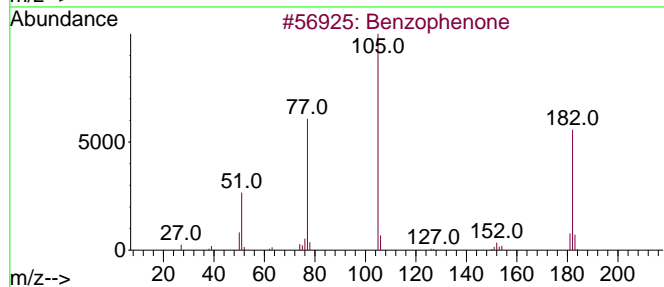
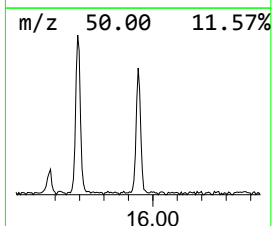
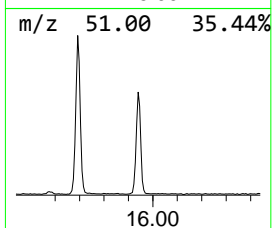
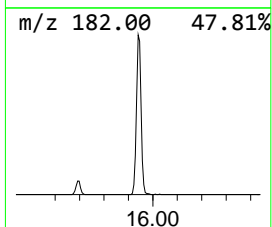
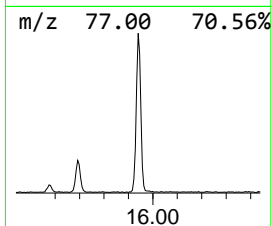
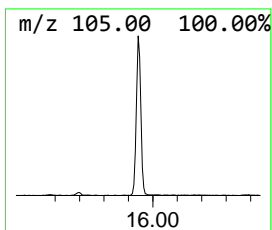
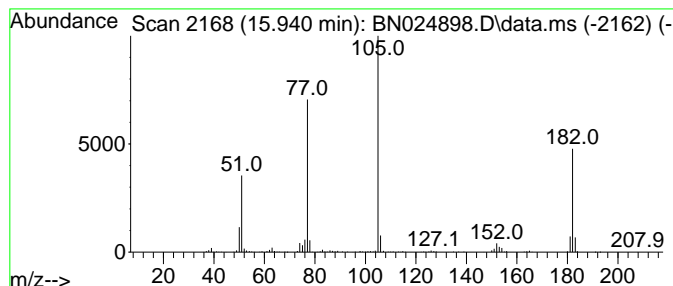
Quant Method : Z:\svoasrv\HPCHEM1\BNA_N\Methods\SFAM-EPA-BN041023.M
 Quant Title : SVOA CALIBRATION

TIC Library : C:\Database\NIST20.L
 TIC Integration Parameters: LSCINT.P

 Peak Number 6 Benzophenone Concentration Rank 6

R.T.	EstConc	Area	Relative to ISTD	R.T.
15.940	2.34 ng/ul	474700	Acenaphthene-d10	14.587

Hit#	of	5	Tentative ID	MW	MolForm	CAS#	Qual
1			Benzophenone	182	C13H10O	000119-61-9	97
2			Benzophenone	182	C13H10O	000119-61-9	97
3			Benzophenone	182	C13H10O	000119-61-9	97
4			Benzophenone	182	C13H10O	000119-61-9	95
5			Benzophenone	182	C13H10O	000119-61-9	91



Data Path : Z:\svoasrv\HPCHEM1\BNA_N\Data\BN041423\
 Data File : BN024898.D
 Acq On : 14 Apr 2023 15:17
 Operator : CG/JU
 Sample : 02252-06
 Misc :
 ALS Vial : 44 Sample Multiplier: 1

Instrument :
 BNA_N
 ClientSampleId :
 COME2

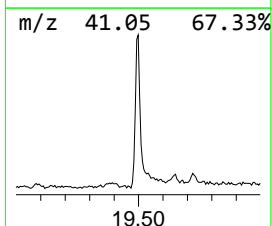
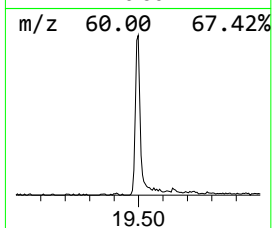
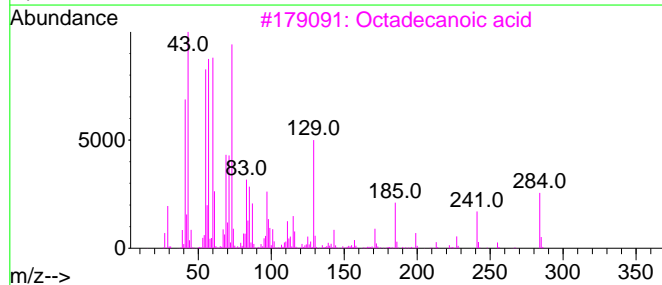
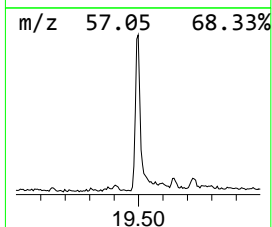
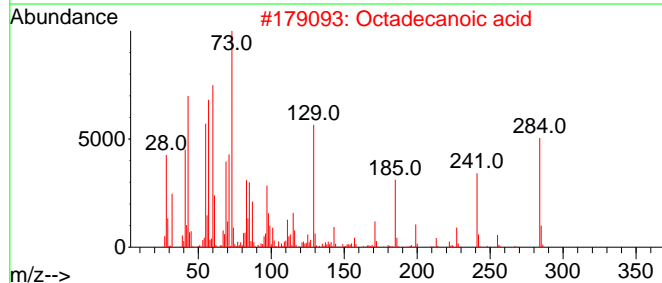
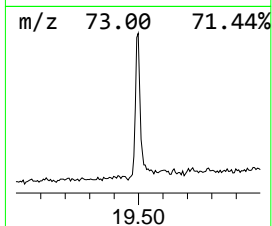
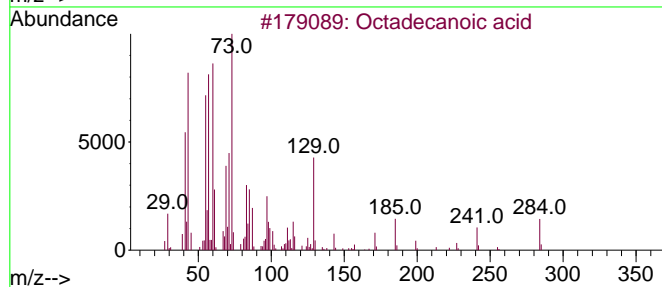
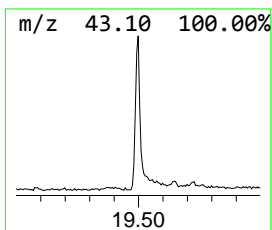
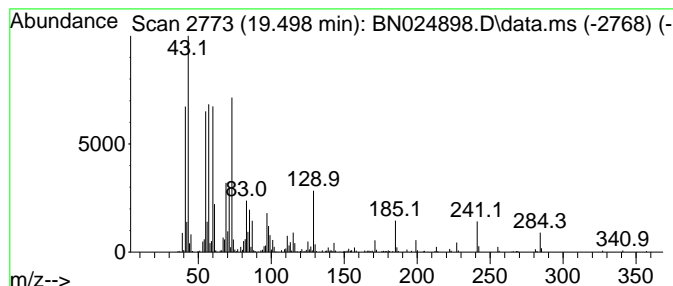
Quant Method : Z:\svoasrv\HPCHEM1\BNA_N\Methods\SFAM-EPA-BN041023.M
 Quant Title : SVOA CALIBRATION

TIC Library : C:\Database\NIST20.L
 TIC Integration Parameters: LSCINT.P

 Peak Number 7 Octadecanoic acid Concentration Rank 7

R.T.	EstConc	Area	Relative to ISTD	R.T.
19.498	2.31 ng/ul	578899	Chrysene-d12	21.522

Hit#	of	5	Tentative ID	MW	MolForm	CAS#	Qual
1			Octadecanoic acid	284	C18H36O2	000057-11-4	99
2			Octadecanoic acid	284	C18H36O2	000057-11-4	99
3			Octadecanoic acid	284	C18H36O2	000057-11-4	93
4			Octadecanoic acid	284	C18H36O2	000057-11-4	87
5			Pentadecanoic acid	242	C15H30O2	001002-84-2	86



Data Path : Z:\svoasrv\HPCHEM1\BNA_N\Data\BN041423\
 Data File : BN024898.D
 Acq On : 14 Apr 2023 15:17
 Operator : CG/JU
 Sample : 02252-06
 Misc :
 ALS Vial : 44 Sample Multiplier: 1

Instrument :
 BNA_N
 ClientSampleId :
 COME2

Quant Method : Z:\svoasrv\HPCHEM1\BNA_N\Methods\SFAM-EPA-BN041023.M
 Quant Title : SVOA CALIBRATION

TIC Library : C:\Database\NIST20.L
 TIC Integration Parameters: LSCINT.P

TIC Top Hit name	RT	EstConc	Units	Response	--Internal Standard--			
					#	RT	Resp	Conc
unknown-01	9.563	3.5	ng/u1	502834	2	10.752	2887270	20.0
unknown-02	13.399	6.8	ng/u1	1384330	3	14.587	4058750	20.0
(DEL) Alkane: S...	13.599	4.1	ng/u1	833316	3	14.587	4058750	20.0
Benzophenone	15.940	2.3	ng/u1	474700	3	14.587	4058750	20.0
Octadecanoic acid	19.498	2.3	ng/u1	578899	5	21.522	5022110	20.0