

Data Path : Z:\svoasrv\HPCHEM1\BNA_N\Data\BN042223\
 Data File : BN025085.D
 Acq On : 22 Apr 2023 20:30
 Operator : CG/JU
 Sample : PB152278BS
 Misc :
 ALS Vial : 17 Sample Multiplier: 1

Instrument :
 BNA_N
 ClientSampleId :
 SLCS278

Manual Integrations
 APPROVED

Reviewed By : Christian Giraldo 04/24/2023
 Supervised By : Jagrut Upadhyay 04/24/2023

Quant Time: Apr 23 00:42:18 2023
 Quant Method : Z:\svoasrv\HPCHEM1\BNA_N\Methods\SFAM-EPA-BN041023.M
 Quant Title : SVOA CALIBRATION
 QLast Update : Sun Apr 23 00:37:14 2023
 Response via : Initial Calibration

Compound	R.T.	QIon	Response	Conc	Units	Dev(Min)	Qvalue
Internal Standards							
1) 1,4-Dichlorobenzene-d4	7.916	152	271716	20.000	ng/u1	0.00	
20) Naphthalene-d8	10.728	136	1249906	20.000	ng/u1	0.00	
38) Acenaphthene-d10	14.563	164	836999	20.000	ng/u1	0.00	
64) Phenanthrene-d10	17.310	188	1897487	20.000	ng/u1	0.00	
79) Chrysene-d12	21.504	240	1882934	20.000	ng/u1	0.00	
88) Perylene-d12	23.939	264	2145479	20.000	ng/u1	0.00	
System Monitoring Compounds							
3) 1,4-Dioxane-d8	3.293	96	42331	5.929	ng/uL	0.00	
4) Pyridine-d5	3.717	84	614858	28.762	ng/u1	0.00	
7) Phenol-d5	7.075	99	870123	32.846	ng/u1	0.00	
9) Bis-(2-Chloroethyl)eth...	7.246	67	578902	32.672	ng/u1	0.00	
11) 2-Chlorophenol-d4	7.446	132	629269	32.324	ng/u1	0.00	
15) 4-Methylphenol-d8	8.634	113	692437	32.926	ng/u1	0.00	
21) Nitrobenzene-d5	9.087	128	331399	32.746	ng/u1	0.00	
24) 2-Nitrophenol-d4	9.810	143	373066	34.033	ng/u1	0.00	
28) 2,4-Dichlorophenol-d3	10.346	165	657645	33.565	ng/u1	0.00	
31) 4-Chloroaniline-d4	10.869	131	910874	30.634	ng/u1	0.00	
46) Dimethylphthalate-d6	13.975	166	2208122	34.031	ng/u1	0.00	
49) Acenaphthylene-d8	14.257	160	2391784	32.167	ng/u1	0.00	
54) 4-Nitrophenol-d4	14.763	143	465479	34.997	ng/u1	0.00	
60) Fluorene-d10	15.557	176	1809790	33.035	ng/u1	0.00	
65) 4,6-Dinitro-2-methylph...	15.681	200	410369	33.232	ng/u1	0.00	
73) Anthracene-d10	17.410	188	2876166	32.274	ng/u1	0.00	
81) Pyrene-d10	19.704	212	3427929	31.351	ng/u1	0.00	
92) Benzo(a)pyrene-d12	23.786	264	3772872	33.632	ng/u1	0.00	
Target Compounds							
2) 1,4-Dioxane	3.328	88	85479	11.095	ng/uL	96	
5) Pyridine	3.740	79	617073	27.939	ng/u1	98	
6) Benzaldehyde	7.052	77	450396	34.798	ng/u1	97	
8) Phenol	7.105	94	879977	31.896	ng/u1	99	
10) Bis(2-Chloroethyl)ether	7.340	93	687859	31.758	ng/u1	99	
12) 2-Chlorophenol	7.475	128	639962	31.474	ng/u1	98	
13) 2-Methylphenol	8.363	108	644392	31.813	ng/u1	99	
14) 2,2'-oxybis(1-Chloropr...	8.446	45	1358683	31.947	ng/u1	99	
16) Acetophenone	8.746	105	1080990	32.508	ng/u1	98	
17) N-Nitroso-di-n-propyla...	8.734	70	598850	33.387	ng/u1	99	
18) 4-Methylphenol	8.693	108	721965	32.053	ng/u1	93	
19) Hexachloroethane	8.999	117	253550	30.898	ng/u1	100	
22) Nitrobenzene	9.128	77	860367	31.638	ng/u1	99	
23) Isophorone	9.652	82	1664411	33.343	ng/u1	100	
25) 2-Nitrophenol	9.840	139	385925	32.637	ng/u1	99	
26) 2,4-Dimethylphenol	9.899	107	674003	27.072	ng/u1	99	
27) Bis(2-Chloroethoxy)met...	10.140	93	1002692	32.277	ng/u1	98	
29) 2,4-Dichlorophenol	10.375	162	642357	32.666	ng/u1	98	
30) Naphthalene	10.781	128	2206451	31.609	ng/u1	99	
32) 4-Chloroaniline	10.893	127	850788	28.265	ng/u1	100	
33) Hexachlorobutadiene	11.063	225	366101	31.942	ng/u1	97	
34) Caprolactam	11.669	113	229916m	33.358	ng/u1		
35) 4-Chloro-3-methylphenol	12.016	107	786833	34.127	ng/u1	98	
36) 2-Methylnaphthalene	12.387	142	1499751	32.508	ng/u1	99	

Data Path : Z:\svoasrv\HPCHEM1\BNA_N\Data\BN042223\
 Data File : BN025085.D
 Acq On : 22 Apr 2023 20:30
 Operator : CG/JU
 Sample : PB152278BS
 Misc :
 ALS Vial : 17 Sample Multiplier: 1

Instrument :
 BNA_N
 ClientSampleId :
 SLCS278

Manual Integrations
 APPROVED

Reviewed By : Christian Giraldo 04/24/2023
 Supervised By : Jagrut Upadhyay 04/24/2023

Quant Time: Apr 23 00:42:18 2023
 Quant Method : Z:\svoasrv\HPCHEM1\BNA_N\Methods\SFAM-EPA-BN041023.M
 Quant Title : SVOA CALIBRATION
 QLast Update : Sun Apr 23 00:37:14 2023
 Response via : Initial Calibration

Compound	R.T.	QIon	Response	Conc	Units	Dev(Min)
37) 1-Methylnaphthalene	12.610	142	1547835	33.610	ng/ul	99
39) 1,2,4,5-Tetrachloroben...	12.757	216	751702	30.789	ng/ul	98
40) Hexachlorocyclopentadiene	12.734	237	399371	26.826	ng/ul	98
41) 2,4,6-Trichlorophenol	12.998	196	515040	30.875	ng/ul	94
42) 2,4,5-Trichlorophenol	13.069	196	587441	32.180	ng/ul	96
43) 1,1'-Biphenyl	13.398	154	2035100	30.517	ng/ul	100
44) 2-Chloronaphthalene	13.440	162	1567867	30.278	ng/ul	97
45) 2-Nitroaniline	13.651	65	608087	33.630	ng/ul	96
47) Dimethylphthalate	14.022	163	2192915	33.590	ng/ul	100
48) 2,6-Dinitrotoluene	14.145	165	439080	34.456	ng/ul	97
50) Acenaphthylene	14.287	152	2560366	31.351	ng/ul	99
51) 3-Nitroaniline	14.475	138	460950	34.421	ng/ul	97
52) Acenaphthene	14.628	153	1791462	31.730	ng/ul	100
53) 2,4-Dinitrophenol	14.681	184	265893	32.452	ng/ul	96
55) 4-Nitrophenol	14.781	109	370162	34.194	ng/ul	96
56) Dibenzofuran	14.963	168	2490768	32.006	ng/ul	97
57) 2,4-Dinitrotoluene	14.934	165	659691	35.763	ng/ul	97
58) 2,3,4,6-Tetrachlorophenol	15.187	232	501092	33.335	ng/ul	99
59) Diethylphthalate	15.387	149	2267682	34.567	ng/ul	98
61) Fluorene	15.610	166	2063379	32.964	ng/ul	98
62) 4-Chlorophenyl-phenyle...	15.604	204	977195	33.540	ng/ul	96
63) 4-Nitroaniline	15.639	138	499355	37.839	ng/ul	96
66) 4,6-Dinitro-2-methylph...	15.692	198	396838	32.806	ng/ul	97
67) N-Nitrosodiphenylamine	15.822	169	1797050	31.217	ng/ul	97
68) 4-Bromophenyl-phenylether	16.498	248	603306	31.632	ng/ul	95
69) Hexachlorobenzene	16.616	284	695964	32.229	ng/ul	98
70) Atrazine	16.775	200	495837	25.313	ng/ul	98
71) Pentachlorophenol	16.963	266	415539	30.959	ng/ul	96
72) Phenanthrene	17.357	178	3373334	31.504	ng/ul	99
74) Anthracene	17.445	178	3382046	31.345	ng/ul	99
75) 1,2,3,4-Tetrachloroben...	13.363	216	767677	28.444	ng/uL	97
76) Pentachlorobenzene	14.881	250	781514	30.266	ng/uL	97
77) Carbazole	17.722	167	3241271	33.269	ng/ul	99
78) Di-n-butylphthalate	18.280	149	4065910	35.161	ng/ul	100
80) Fluoranthene	19.375	202	4087768	31.194	ng/ul	98
82) Pyrene	19.739	202	4262011	30.899	ng/ul	96
83) Butylbenzylphthalate	20.633	149	1972862	34.451	ng/ul	97
84) 3,3'-Dichlorobenzidine	21.421	252	1478862	34.231	ng/ul	92
85) Benzo(a)anthracene	21.486	228	4223217	31.229	ng/ul	98
86) Bis(2-ethylhexyl)phtha...	21.410	149	2961046	34.637	ng/ul	99
87) Chrysene	21.545	228	4072680	31.618	ng/ul	99
89) Di-n-octyl phthalate	22.345	149	5369289	36.416	ng/ul	100
90) Benzo(b)fluoranthene	23.198	252	4679395	33.258	ng/ul	99
91) Benzo(k)fluoranthene	23.245	252	4503650	32.529	ng/ul	100
93) Benzo(a)pyrene	23.833	252	4091529	33.214	ng/ul	98
94) Indeno(1,2,3-cd)pyrene	26.468	276	5276921	35.355	ng/ul	99
95) Dibenzo(a,h)anthracene	26.486	278	4435402	35.995	ng/ul	99
96) Benzo(g,h,i)perylene	27.245	276	4364612	36.037	ng/ul	98

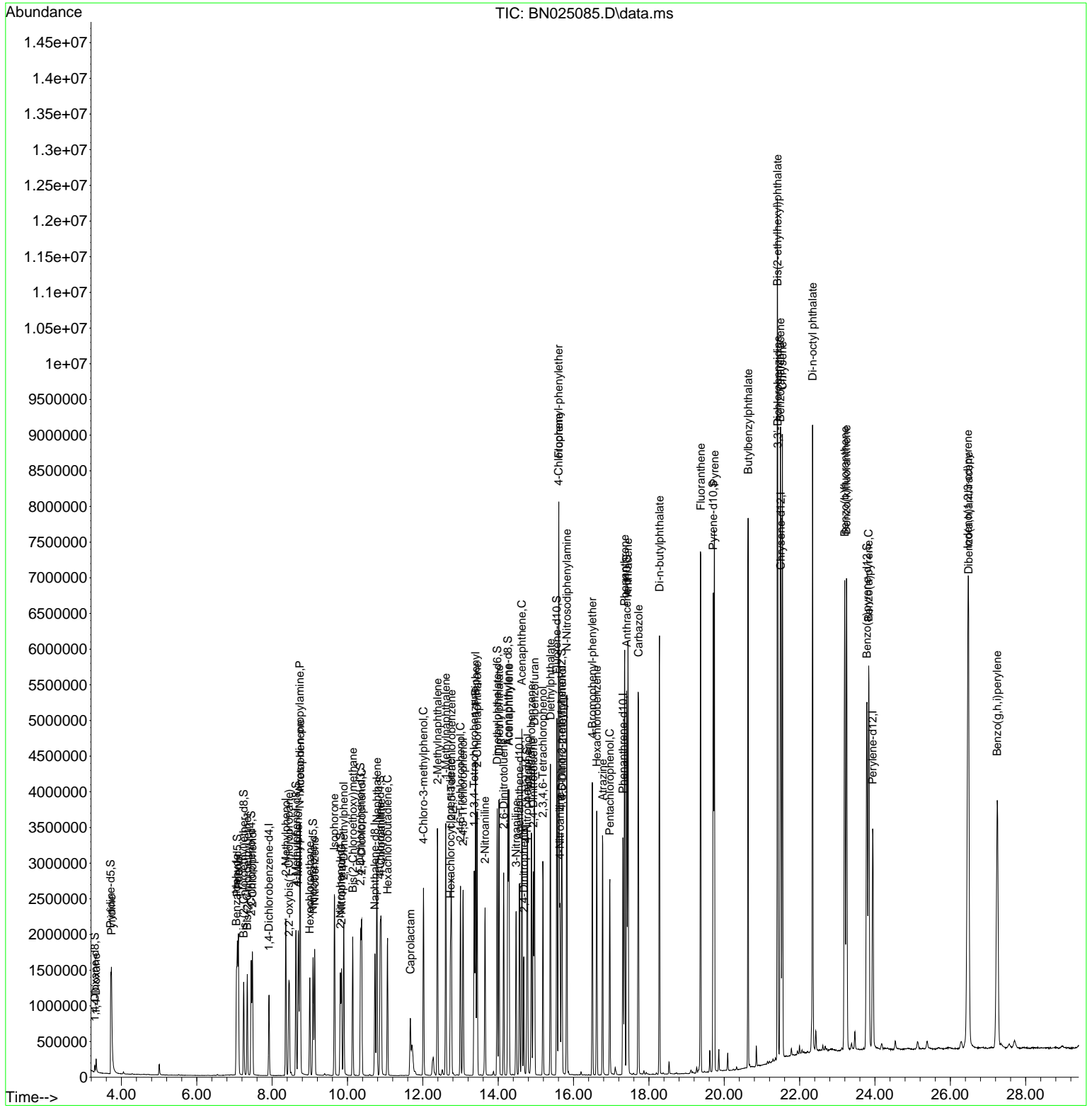
(#) = qualifier out of range (m) = manual integration (+) = signals summed

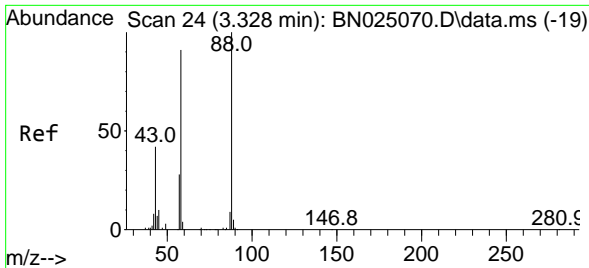
Data Path : Z:\svoasrv\HPCHEM1\BNA_N\Data\BN042223\
 Data File : BN025085.D
 Acq On : 22 Apr 2023 20:30
 Operator : CG/JU
 Sample : PB152278BS
 Misc :
 ALS Vial : 17 Sample Multiplier: 1

Instrument :
 BNA_N
 ClientSampleId :
 SLCS278

Quant Time: Apr 23 00:42:18 2023
 Quant Method : Z:\svoasrv\HPCHEM1\BNA_N\Methods\SFAM-EPA-BN041023.M
 Quant Title : SVOA CALIBRATION
 QLast Update : Sun Apr 23 00:37:14 2023
 Response via : Initial Calibration

Manual Integrations
APPROVED
 Reviewed By :Christian Giraldo 04/24/2023
 Supervised By :Jagrut Upadhyay 04/24/2023





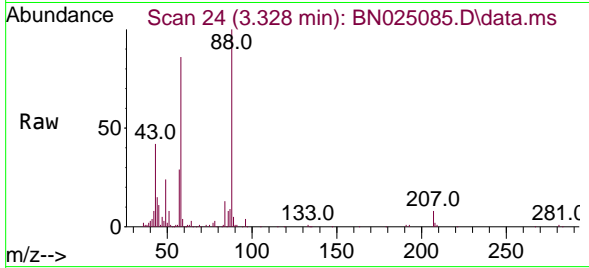
#2
 1,4-Dioxane
 Concen: 11.095 ng/uL
 RT: 3.328 min Scan# 24
 Delta R.T. 0.000 min
 Lab File: BN025085.D
 Acq: 22 Apr 2023 20:30

Instrument :

BNA_N

ClientSampleId :

SLCS278

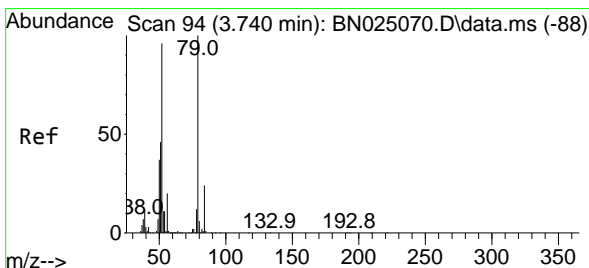
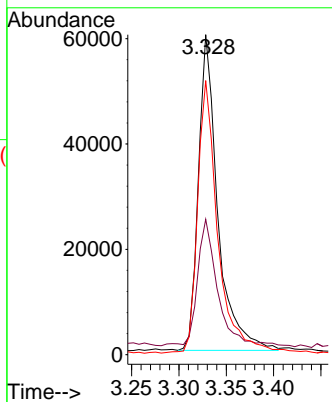
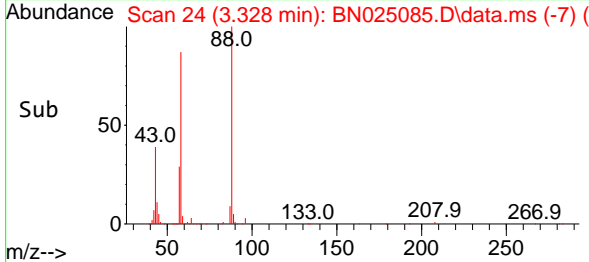


Tgt Ion: 88 Resp: 85479
 Ion Ratio Lower Upper
 88 100
 43 42.3 33.0 49.4
 58 85.6 72.3 108.5

Manual Integrations

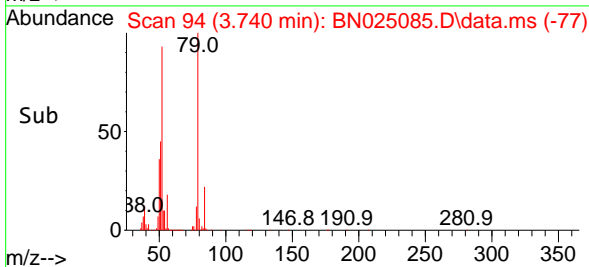
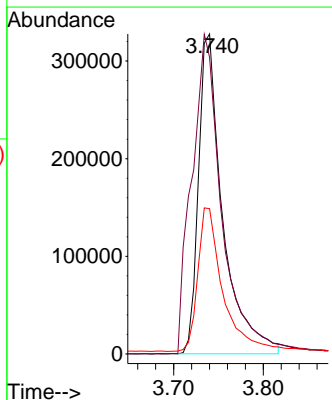
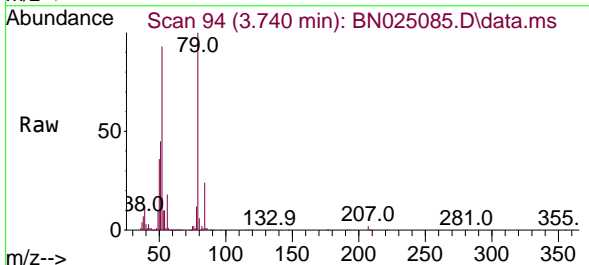
APPROVED

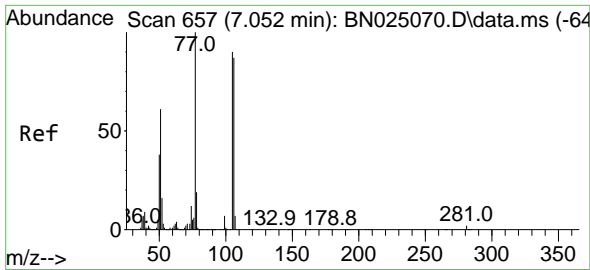
Reviewed By :Christian Giraldo 04/24/2023
 Supervised By :Jagrut Upadhyay 04/24/2023



#5
 Pyridine
 Concen: 27.939 ng/uL
 RT: 3.740 min Scan# 94
 Delta R.T. 0.000 min
 Lab File: BN025085.D
 Acq: 22 Apr 2023 20:30

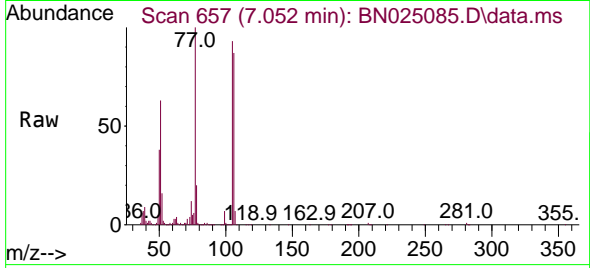
Tgt Ion: 79 Resp: 617073
 Ion Ratio Lower Upper
 79 100
 52 92.7 76.1 114.1
 51 45.4 35.8 53.6





#6
Benzaldehyde
Concen: 34.798 ng/u1
RT: 7.052 min Scan# 657
Delta R.T. 0.000 min
Lab File: BN025085.D
Acq: 22 Apr 2023 20:30

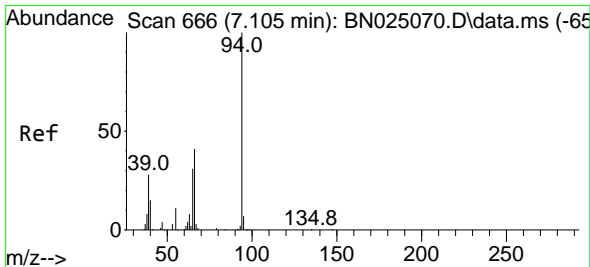
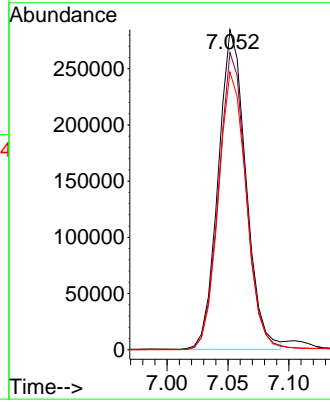
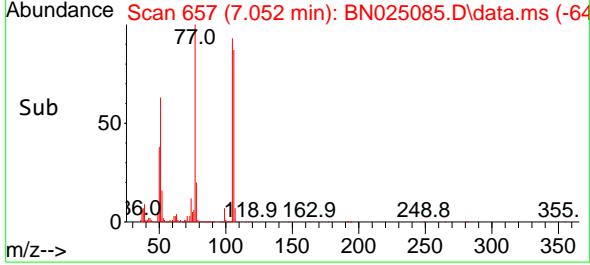
Instrument :
BNA_N
ClientSampleId :
SLCS278



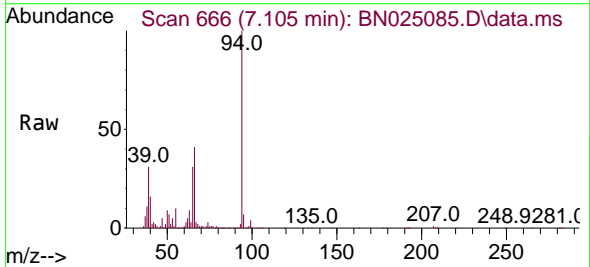
Tgt Ion: 77 Resp: 450390
Ion Ratio Lower Upper
77 100
105 92.8 74.3 111.5
106 86.7 73.3 109.9

Manual Integrations
APPROVED

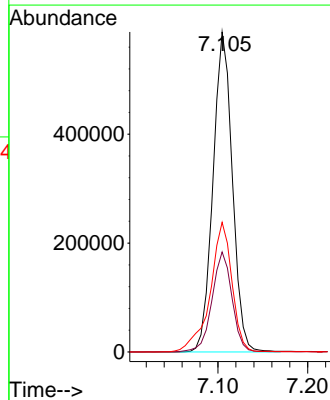
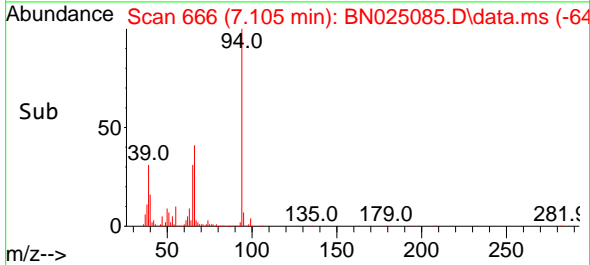
Reviewed By :Christian Giraldo 04/24/2023
Supervised By :Jagrut Upadhyay 04/24/2023

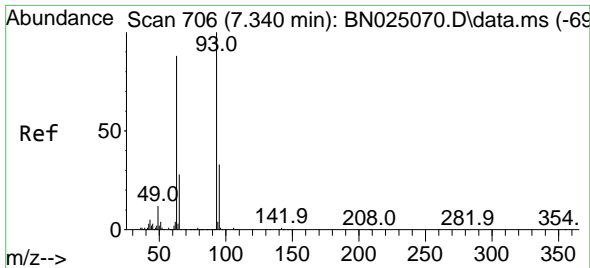


#8
Phenol
Concen: 31.896 ng/u1
RT: 7.105 min Scan# 666
Delta R.T. 0.000 min
Lab File: BN025085.D
Acq: 22 Apr 2023 20:30



Tgt Ion: 94 Resp: 879977
Ion Ratio Lower Upper
94 100
65 31.3 25.1 37.7
66 40.5 31.9 47.9





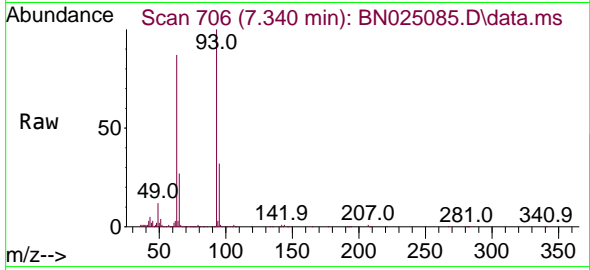
#10
 Bis(2-Chloroethyl)ether
 Concen: 31.758 ng/ul
 RT: 7.340 min Scan# 706
 Delta R.T. 0.000 min
 Lab File: BN025085.D
 Acq: 22 Apr 2023 20:30

Instrument :

BNA_N

ClientSampleId :

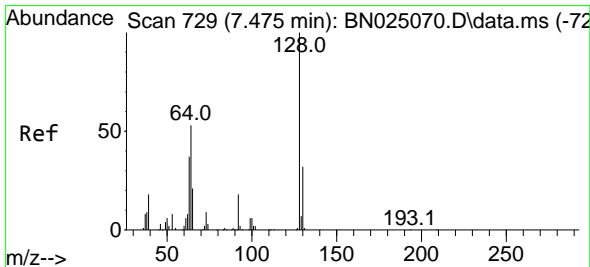
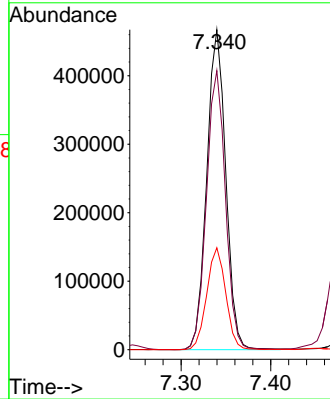
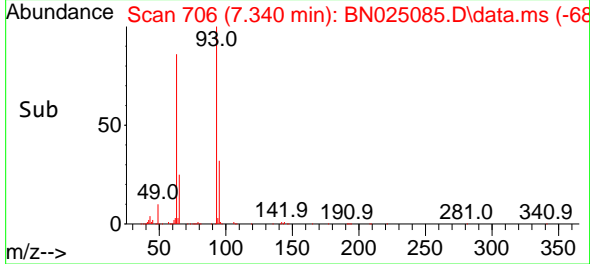
SLCS278



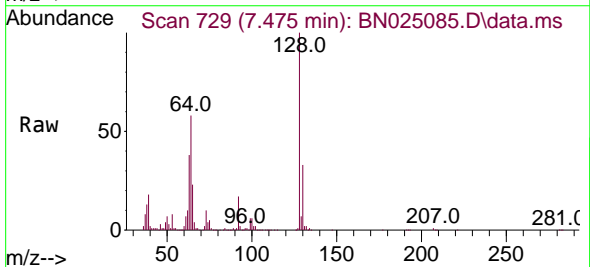
Tgt Ion: 93 Resp: 68785
 Ion Ratio Lower Upper
 93 100
 63 87.2 70.9 106.3
 95 31.8 26.0 39.0

Manual Integrations
 APPROVED

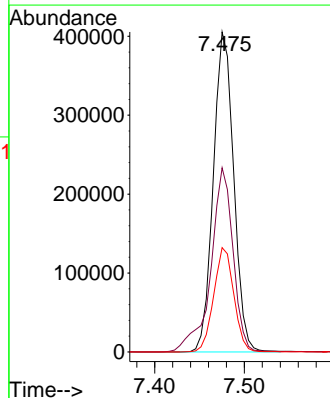
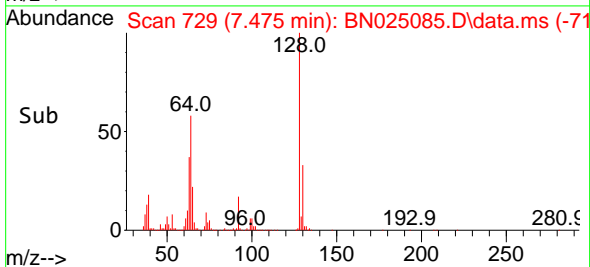
Reviewed By :Christian Giraldo 04/24/2023
 Supervised By :Jagrut Upadhyay 04/24/2023

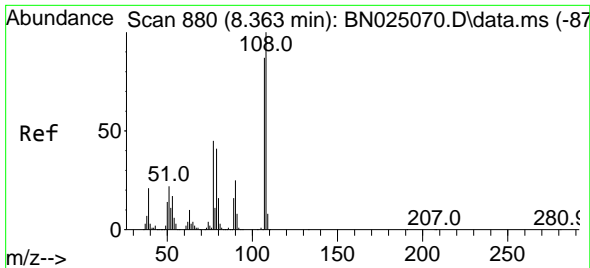


#12
 2-Chlorophenol
 Concen: 31.474 ng/ul
 RT: 7.475 min Scan# 729
 Delta R.T. 0.000 min
 Lab File: BN025085.D
 Acq: 22 Apr 2023 20:30



Tgt Ion:128 Resp: 639962
 Ion Ratio Lower Upper
 128 100
 64 57.6 44.8 67.2
 130 32.6 26.6 39.8





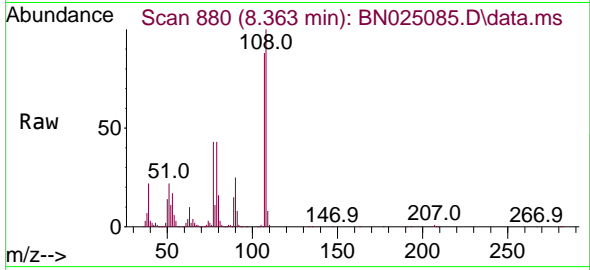
#13
 2-Methylphenol
 Concen: 31.813 ng/ul
 RT: 8.363 min Scan# 880
 Delta R.T. 0.000 min
 Lab File: BN025085.D
 Acq: 22 Apr 2023 20:30

Instrument :

BNA_N

Client Sample Id :

SLCS278

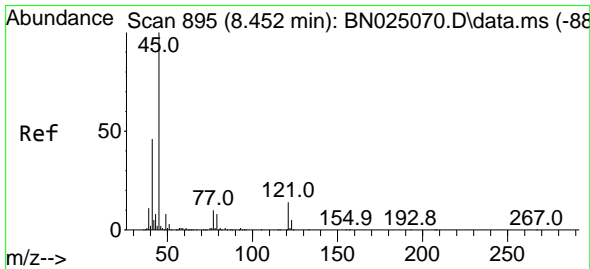
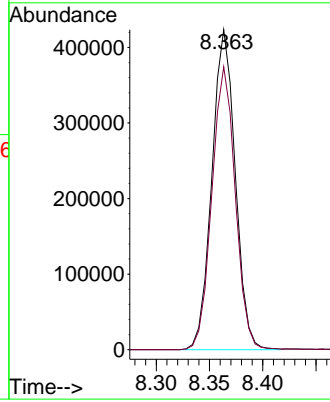
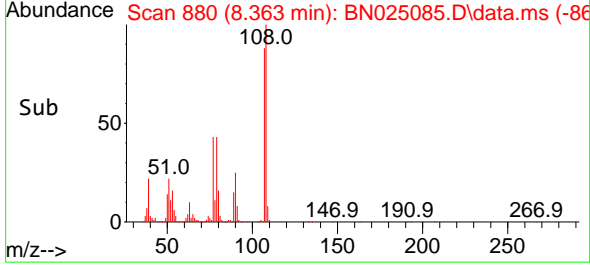


Tgt Ion: 108 Resp: 644392
 Ion Ratio Lower Upper
 108 100
 107 88.4 71.5 107.3

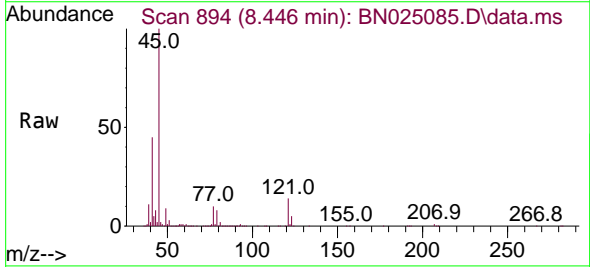
Manual Integrations

APPROVED

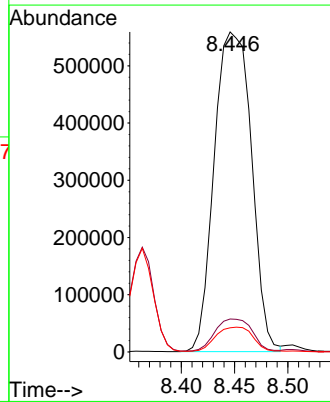
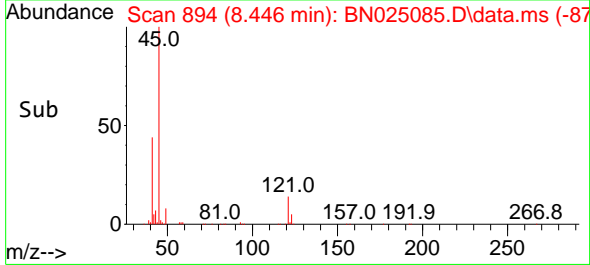
Reviewed By : Christian Giraldo 04/24/2023
 Supervised By : Jagrut Upadhyay 04/24/2023

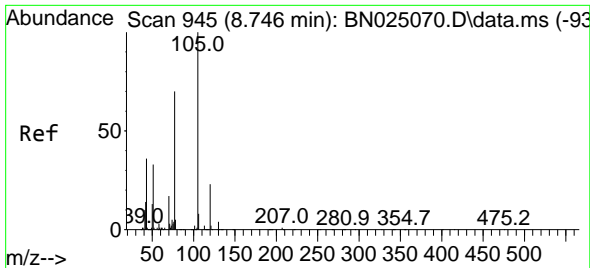


#14
 2,2'-oxybis(1-Chloropropane)
 Concen: 31.947 ng/ul
 RT: 8.446 min Scan# 894
 Delta R.T. -0.006 min
 Lab File: BN025085.D
 Acq: 22 Apr 2023 20:30



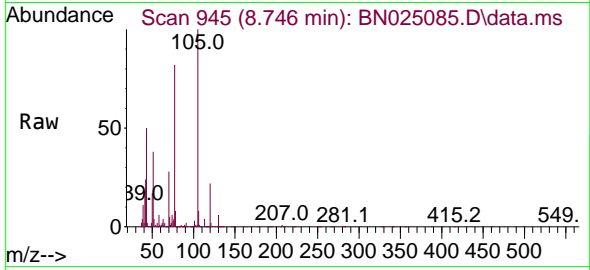
Tgt Ion: 45 Resp: 1358683
 Ion Ratio Lower Upper
 45 100
 77 10.3 8.4 12.6
 79 7.6 6.6 9.8





#16
 Acetophenone
 Concen: 32.508 ng/u1
 RT: 8.746 min Scan# 945
 Delta R.T. 0.000 min
 Lab File: BN025085.D
 Acq: 22 Apr 2023 20:30

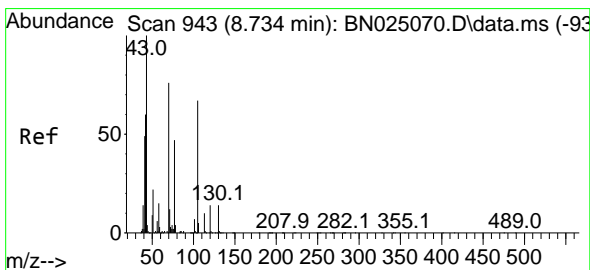
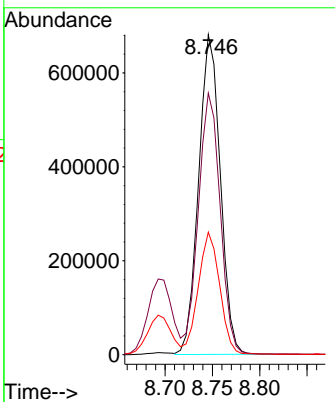
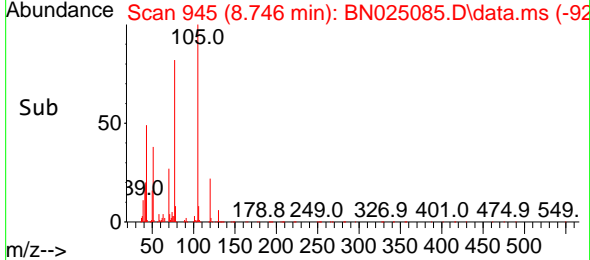
Instrument : BNA_N
 ClientSampleId : SLCS278



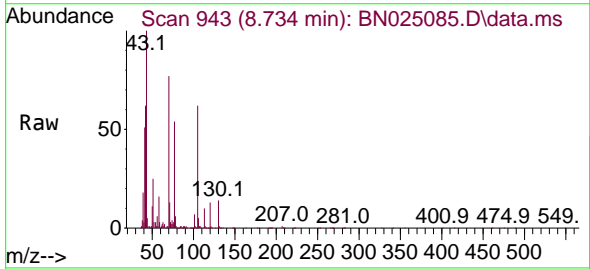
Tgt Ion: 105 Resp: 1080990

Ion	Ratio	Lower	Upper
105	100		
77	81.8	64.8	97.2
51	38.3	28.7	43.1

Manual Integrations
APPROVED
 Reviewed By :Christian Giraldo 04/24/2023
 Supervised By :Jagrut Upadhyay 04/24/2023

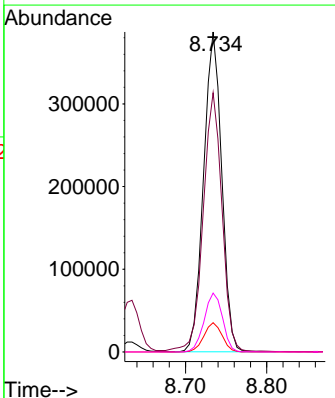
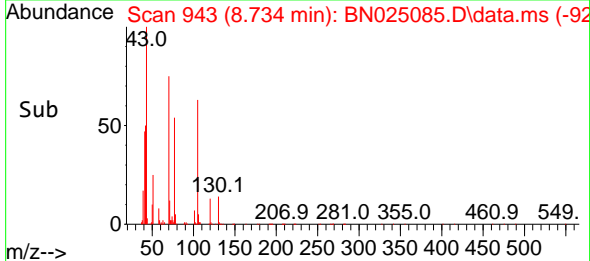


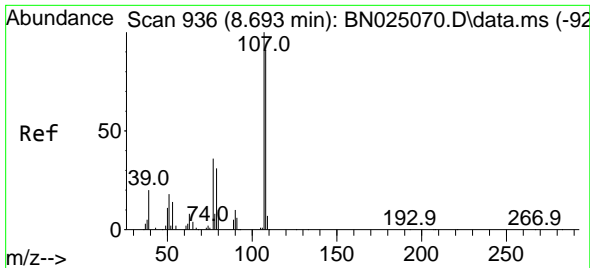
#17
 N-Nitroso-di-n-propylamine
 Concen: 33.387 ng/u1
 RT: 8.734 min Scan# 943
 Delta R.T. 0.000 min
 Lab File: BN025085.D
 Acq: 22 Apr 2023 20:30



Tgt Ion: 70 Resp: 598850

Ion	Ratio	Lower	Upper
70	100		
42	81.0	64.2	96.2
101	9.2	7.3	10.9
130	18.4	15.0	22.6





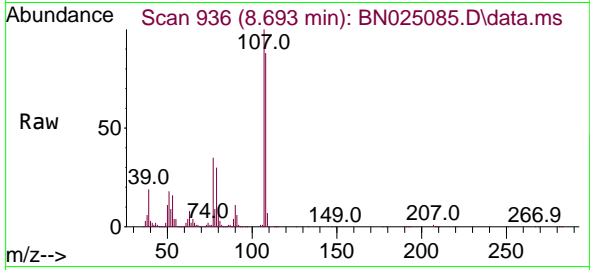
#18
 4-Methylphenol
 Concen: 32.053 ng/u1
 RT: 8.693 min Scan# 911
 Delta R.T. 0.000 min
 Lab File: BN025085.D
 Acq: 22 Apr 2023 20:30

Instrument :

BNA_N

ClientSampleId :

SLCS278

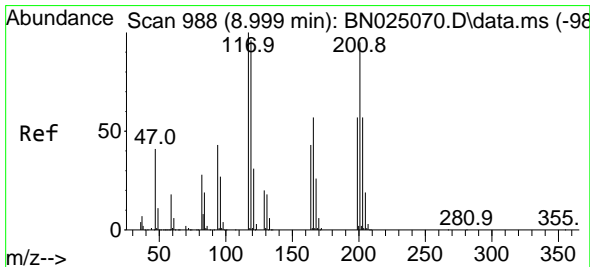
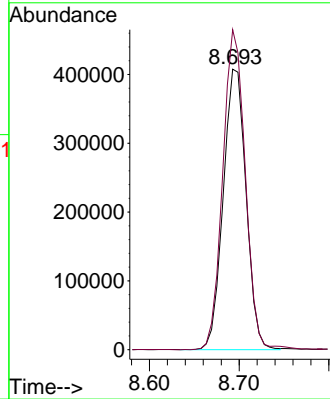
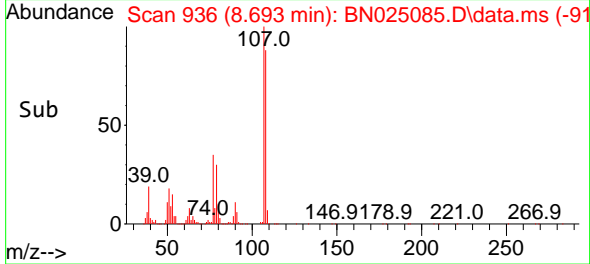


Tgt Ion:108 Resp: 72196
 Ion Ratio Lower Upper
 108 100
 107 114.1 85.8 128.6

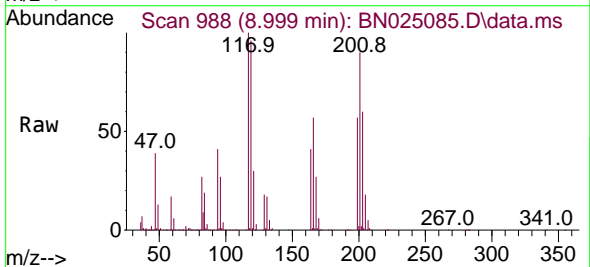
Manual Integrations

APPROVED

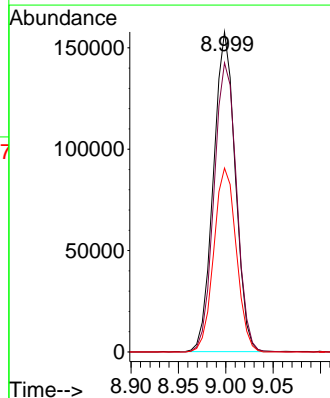
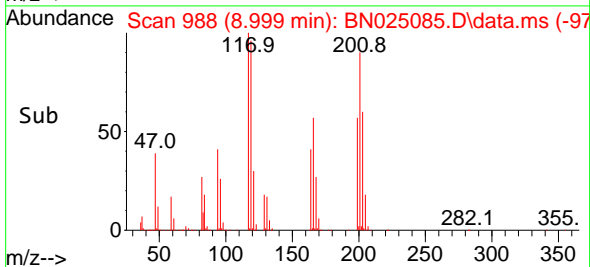
Reviewed By :Christian Giraldo 04/24/2023
 Supervised By :Jagrut Upadhyay 04/24/2023

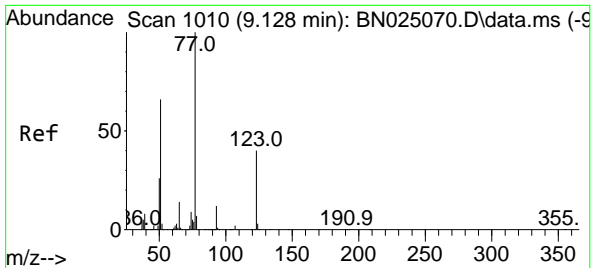


#19
 Hexachloroethane
 Concen: 30.898 ng/u1
 RT: 8.999 min Scan# 988
 Delta R.T. 0.000 min
 Lab File: BN025085.D
 Acq: 22 Apr 2023 20:30



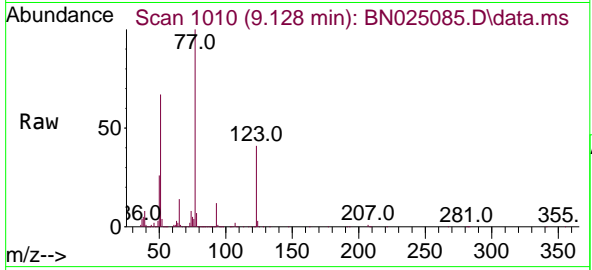
Tgt Ion:117 Resp: 253550
 Ion Ratio Lower Upper
 117 100
 201 90.3 72.2 108.4
 199 57.5 46.2 69.4





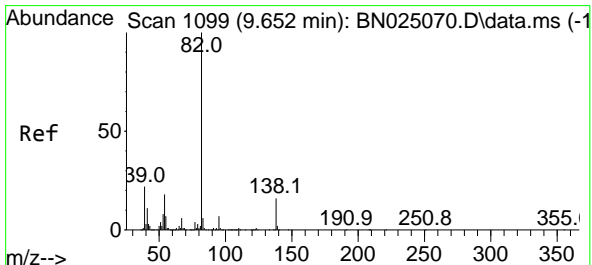
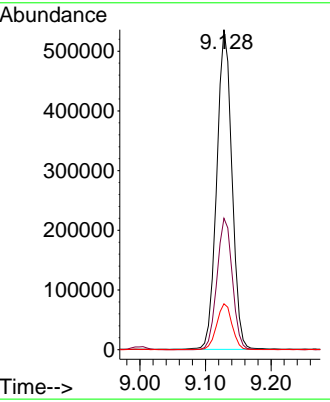
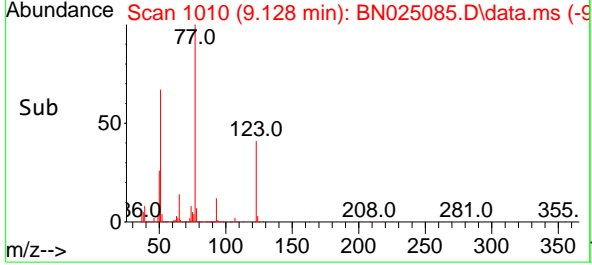
#22
 Nitrobenzene
 Concen: 31.638 ng/uI
 RT: 9.128 min Scan# 1010
 Delta R.T. 0.000 min
 Lab File: BN025085.D
 Acq: 22 Apr 2023 20:30

Instrument : BNA_N
 ClientSampleId : SLCS278

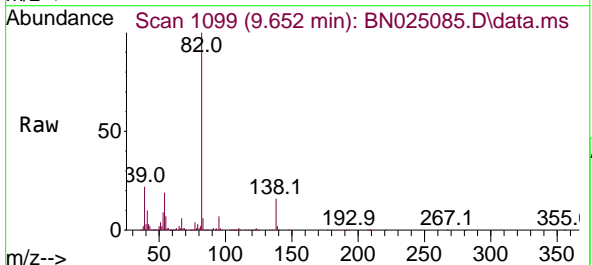


Tgt Ion: 77 Resp: 86036
 Ion Ratio Lower Upper
 77 100
 123 41.0 33.5 50.3
 65 14.4 11.8 17.8

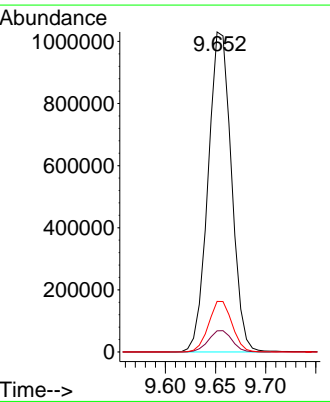
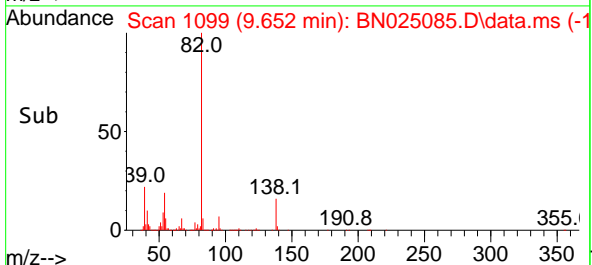
Manual Integrations
APPROVED
 Reviewed By :Christian Giraldo 04/24/2023
 Supervised By :Jagrut Upadhyay 04/24/2023

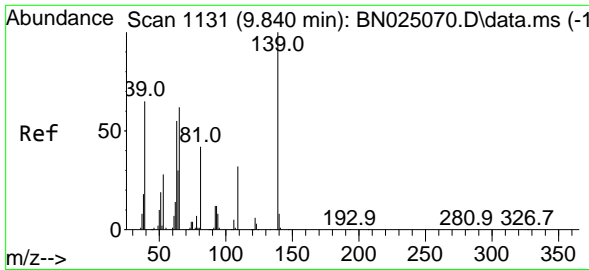


#23
 Isophorone
 Concen: 33.343 ng/uI
 RT: 9.652 min Scan# 1099
 Delta R.T. 0.000 min
 Lab File: BN025085.D
 Acq: 22 Apr 2023 20:30



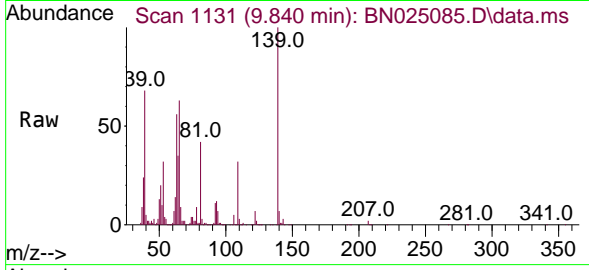
Tgt Ion: 82 Resp: 1664411
 Ion Ratio Lower Upper
 82 100
 95 6.6 5.4 8.0
 138 15.8 12.8 19.2





#25
 2-Nitrophenol
 Concen: 32.637 ng/uI
 RT: 9.840 min Scan# 1131
 Delta R.T. 0.000 min
 Lab File: BN025085.D
 Acq: 22 Apr 2023 20:30

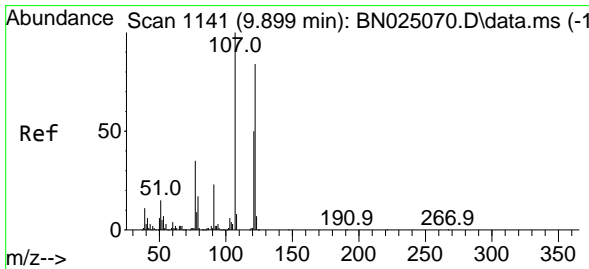
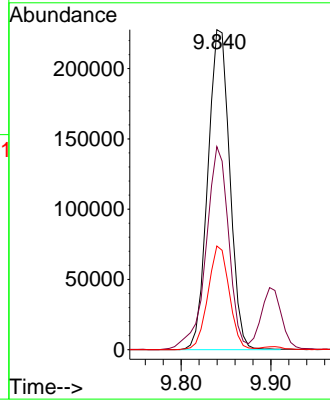
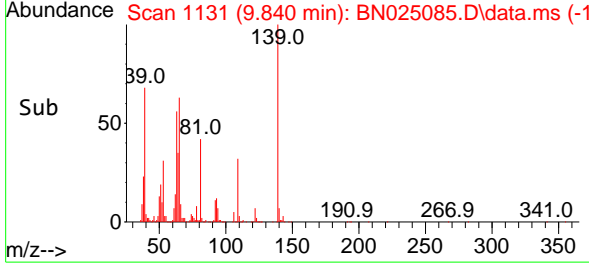
Instrument :
 BNA_N
 ClientSampleId :
 SLCS278



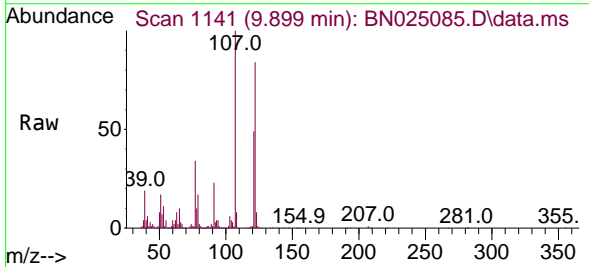
Tgt Ion:139 Resp: 38592
 Ion Ratio Lower Upper
 139 100
 65 63.4 49.8 74.8
 109 32.4 26.2 39.2

Manual Integrations
 APPROVED

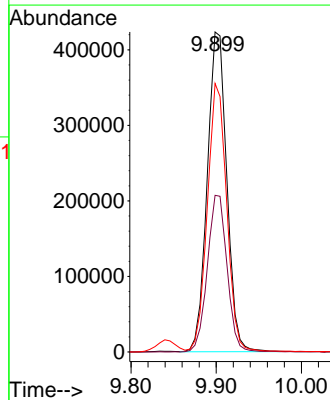
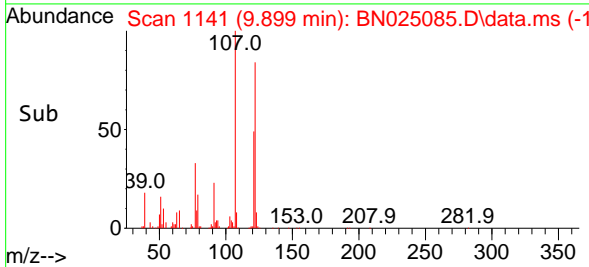
Reviewed By :Christian Giraldo 04/24/2023
 Supervised By :Jagrut Upadhyay 04/24/2023

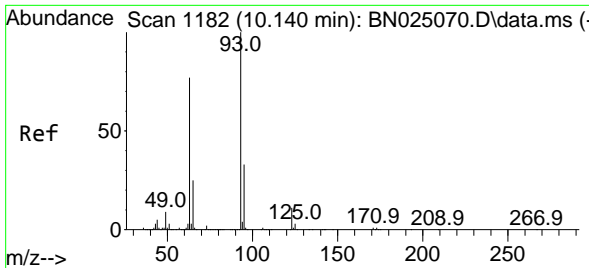


#26
 2,4-Dimethylphenol
 Concen: 27.072 ng/uI
 RT: 9.899 min Scan# 1141
 Delta R.T. 0.000 min
 Lab File: BN025085.D
 Acq: 22 Apr 2023 20:30



Tgt Ion:107 Resp: 674003
 Ion Ratio Lower Upper
 107 100
 121 49.0 39.7 59.5
 122 83.9 66.1 99.1





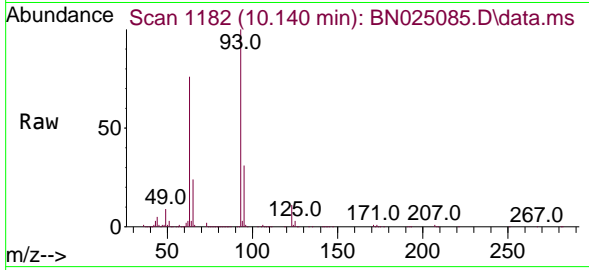
#27
 Bis(2-Chloroethoxy)methane
 Concen: 32.277 ng/ul
 RT: 10.140 min Scan# 1182
 Delta R.T. 0.000 min
 Lab File: BN025085.D
 Acq: 22 Apr 2023 20:30

Instrument :

BNA_N

ClientSampleId :

SLCS278

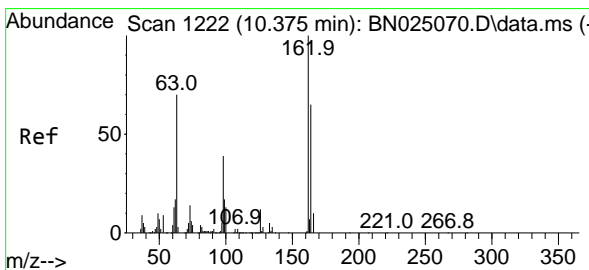
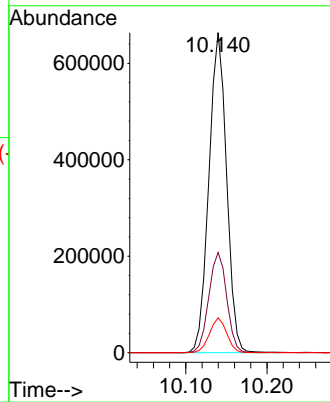
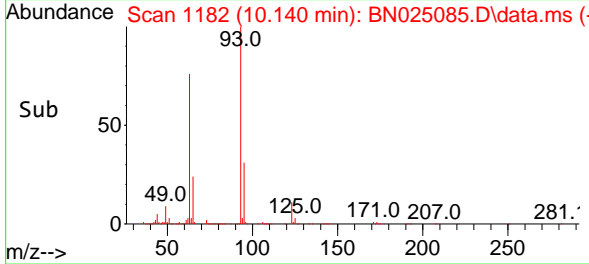


Tgt Ion: 93 Resp: 100269
 Ion Ratio Lower Upper
 93 100
 95 31.3 26.1 39.1
 123 10.9 8.5 12.7

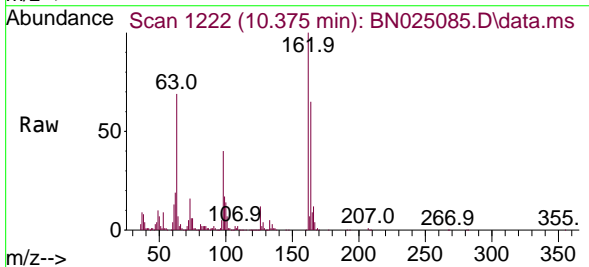
Manual Integrations

APPROVED

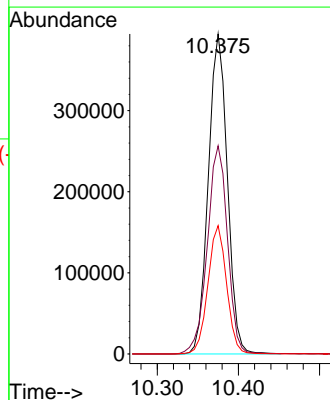
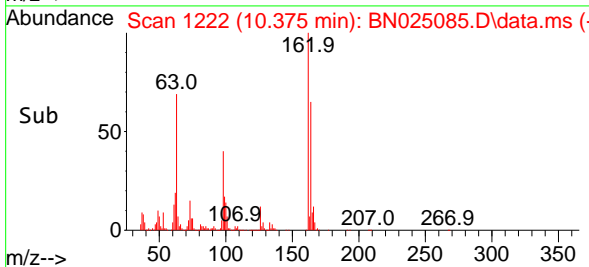
Reviewed By :Christian Giraldo 04/24/2023
 Supervised By :Jagrut Upadhyay 04/24/2023

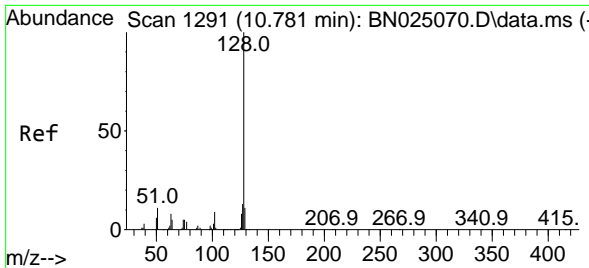


#29
 2,4-Dichlorophenol
 Concen: 32.666 ng/ul
 RT: 10.375 min Scan# 1222
 Delta R.T. 0.000 min
 Lab File: BN025085.D
 Acq: 22 Apr 2023 20:30



Tgt Ion:162 Resp: 642357
 Ion Ratio Lower Upper
 162 100
 164 65.1 50.9 76.3
 98 40.1 31.0 46.4





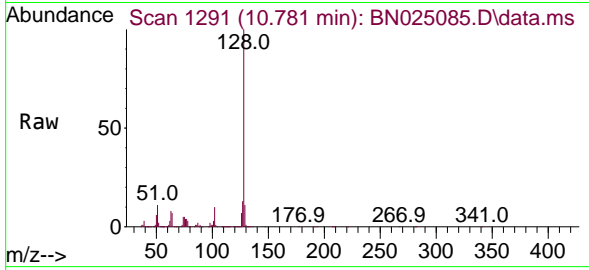
#30
 Naphthalene
 Concen: 31.609 ng/u1
 RT: 10.781 min Scan# 1291
 Delta R.T. 0.000 min
 Lab File: BN025085.D
 Acq: 22 Apr 2023 20:30

Instrument :

BNA_N

ClientSampleId :

SLCS278

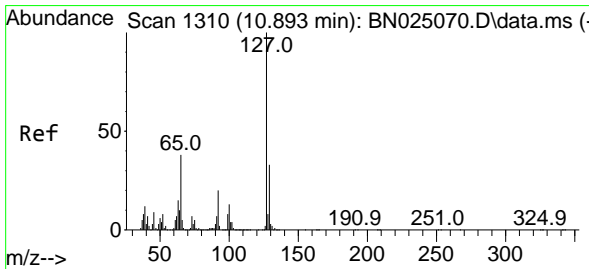
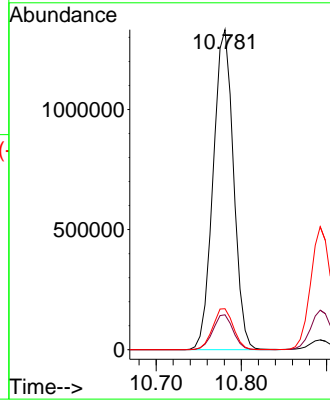
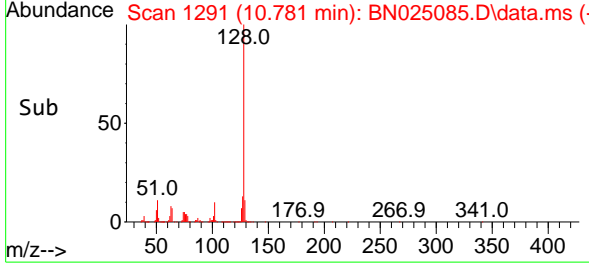


Tgt Ion:128 Resp: 220645
 Ion Ratio Lower Upper
 128 100
 129 10.9 8.4 12.6
 127 12.8 10.7 16.1

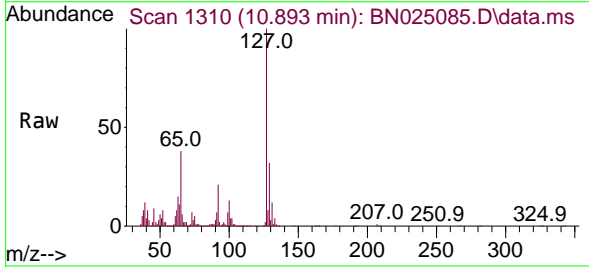
Manual Integrations

APPROVED

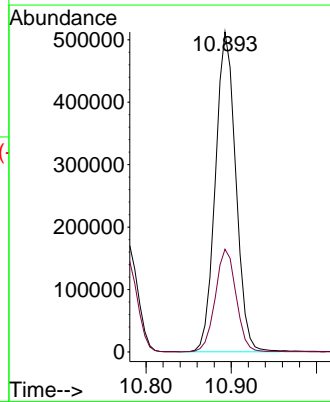
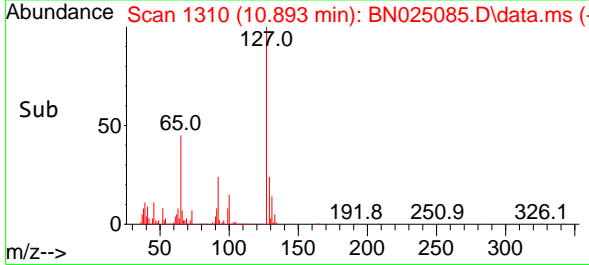
Reviewed By :Christian Giraldo 04/24/2023
 Supervised By :Jagrut Upadhyay 04/24/2023

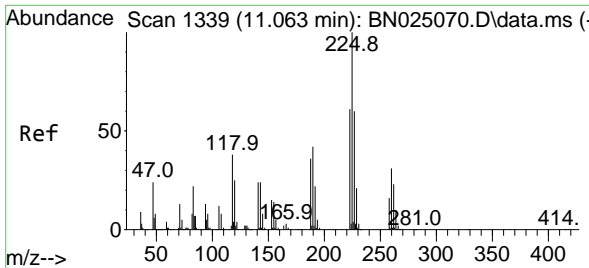


#32
 4-Chloroaniline
 Concen: 28.265 ng/u1
 RT: 10.893 min Scan# 1310
 Delta R.T. 0.000 min
 Lab File: BN025085.D
 Acq: 22 Apr 2023 20:30



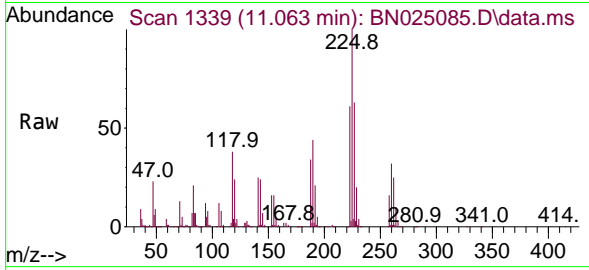
Tgt Ion:127 Resp: 850788
 Ion Ratio Lower Upper
 127 100
 129 32.1 25.5 38.3





#33
 Hexachlorobutadiene
 Concen: 31.942 ng/ul
 RT: 11.063 min Scan# 11
 Delta R.T. 0.000 min
 Lab File: BN025085.D
 Acq: 22 Apr 2023 20:30

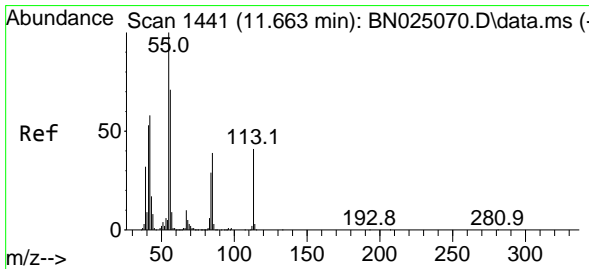
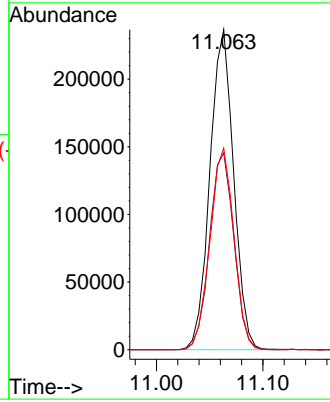
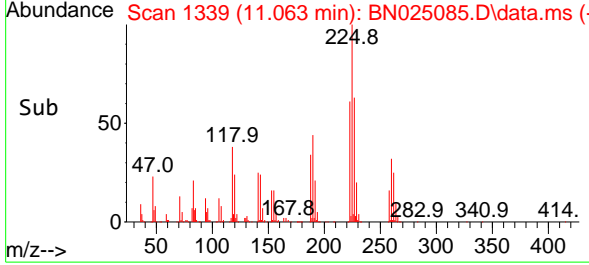
Instrument :
 BNA_N
 ClientSampleId :
 SLCS278



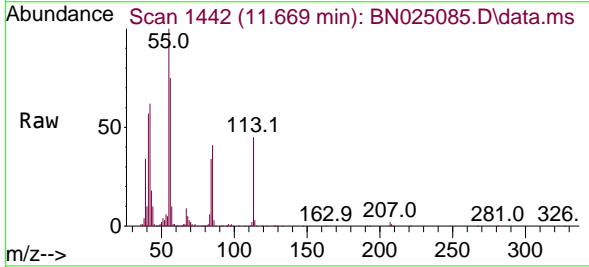
Tgt Ion:225 Resp: 36610
 Ion Ratio Lower Upper
 225 100
 223 61.5 45.9 68.9
 227 63.0 51.2 76.8

Manual Integrations
 APPROVED

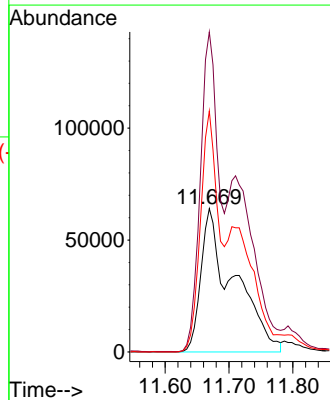
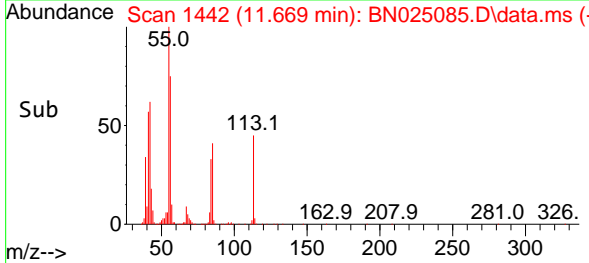
Reviewed By :Christian Giraldo 04/24/2023
 Supervised By :Jagrut Upadhyay 04/24/2023

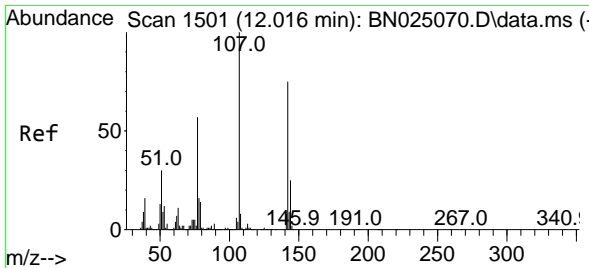


#34
 Caprolactam
 Concen: 33.358 ng/ul m
 RT: 11.669 min Scan# 1442
 Delta R.T. 0.006 min
 Lab File: BN025085.D
 Acq: 22 Apr 2023 20:30



Tgt Ion:113 Resp: 229916
 Ion Ratio Lower Upper
 113 100
 55 223.2 188.3 282.5
 56 168.1 133.5 200.3





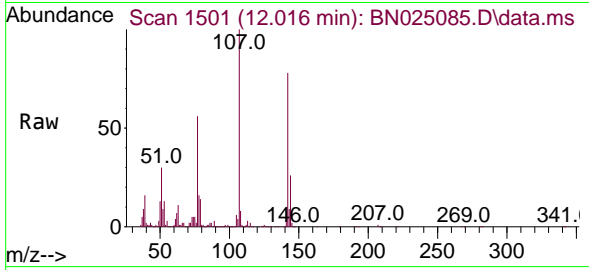
#35
 4-Chloro-3-methylphenol
 Concen: 34.127 ng/ul
 RT: 12.016 min Scan# 1501
 Delta R.T. 0.000 min
 Lab File: BN025085.D
 Acq: 22 Apr 2023 20:30

Instrument :

BNA_N

ClientSampleId :

SLCS278

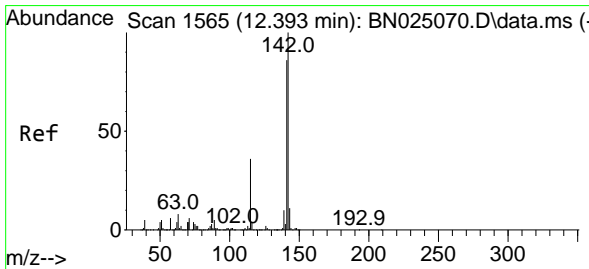
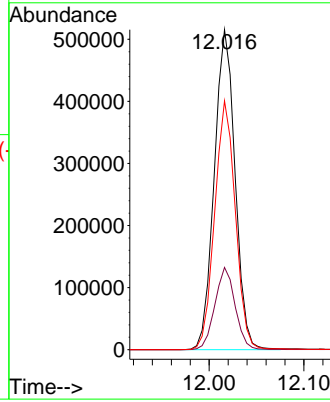
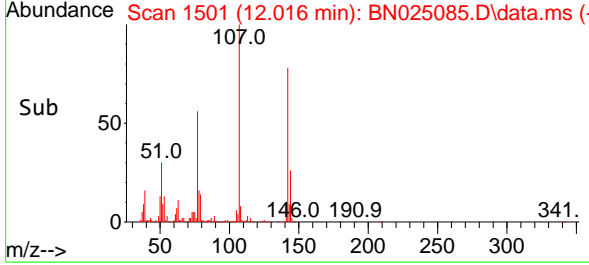


Tgt Ion:107 Resp: 78683
 Ion Ratio Lower Upper
 107 100
 144 25.7 19.6 29.4
 142 77.7 60.7 91.1

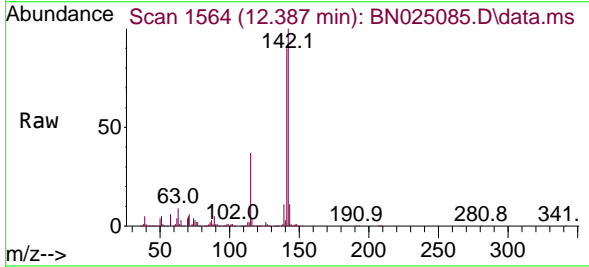
Manual Integrations

APPROVED

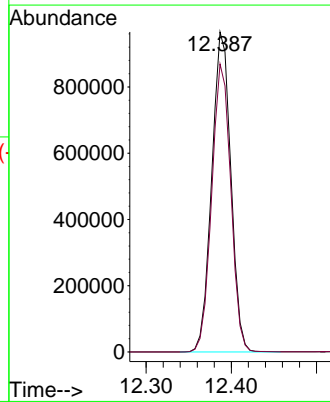
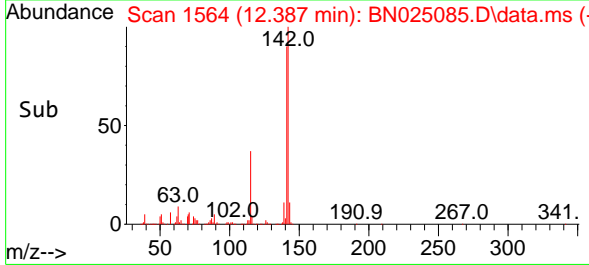
Reviewed By :Christian Giraldo 04/24/2023
 Supervised By :Jagrut Upadhyay 04/24/2023

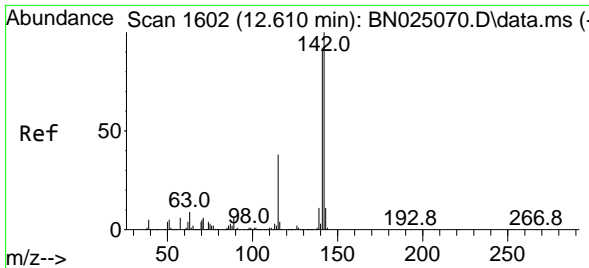


#36
 2-Methylnaphthalene
 Concen: 32.508 ng/ul
 RT: 12.387 min Scan# 1564
 Delta R.T. -0.006 min
 Lab File: BN025085.D
 Acq: 22 Apr 2023 20:30



Tgt Ion:142 Resp: 1499751
 Ion Ratio Lower Upper
 142 100
 141 90.0 71.4 107.2





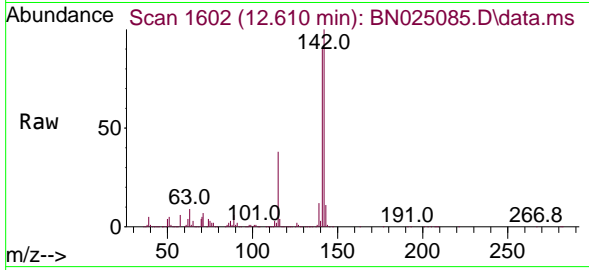
#37
 1-Methylnaphthalene
 Concen: 33.610 ng/u1
 RT: 12.610 min Scan# 1602
 Delta R.T. 0.000 min
 Lab File: BN025085.D
 Acq: 22 Apr 2023 20:30

Instrument :

BNA_N

ClientSampleId :

SLCS278

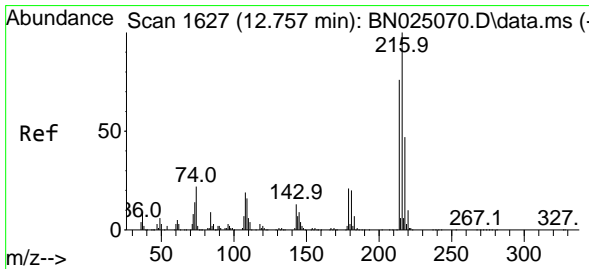
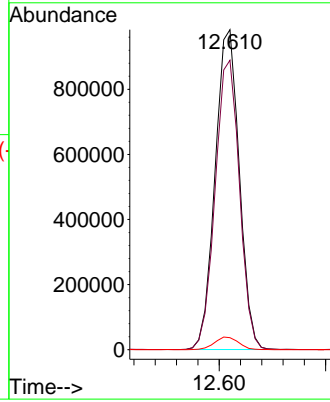
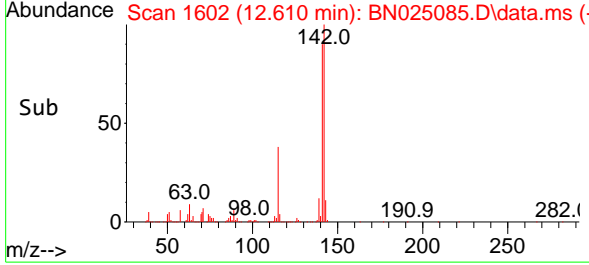


Tgt Ion:142 Resp: 154783
 Ion Ratio Lower Upper
 142 100
 141 90.4 73.5 110.3
 116 3.7 3.1 4.7

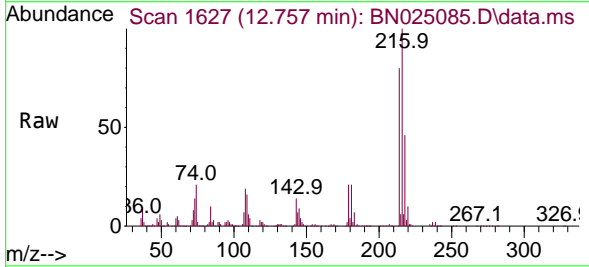
Manual Integrations

APPROVED

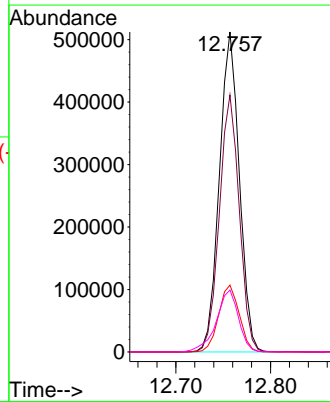
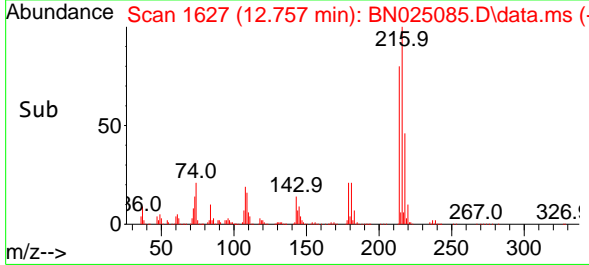
Reviewed By :Christian Giraldo 04/24/2023
 Supervised By :Jagrut Upadhyay 04/24/2023

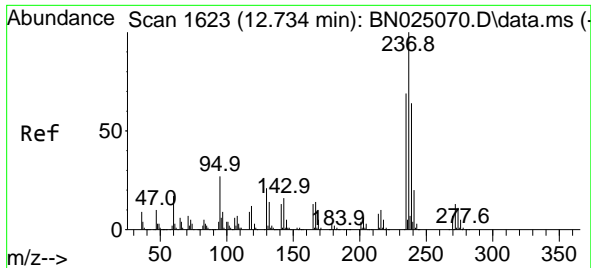


#39
 1,2,4,5-Tetrachlorobenzene
 Concen: 30.789 ng/u1
 RT: 12.757 min Scan# 1627
 Delta R.T. 0.000 min
 Lab File: BN025085.D
 Acq: 22 Apr 2023 20:30



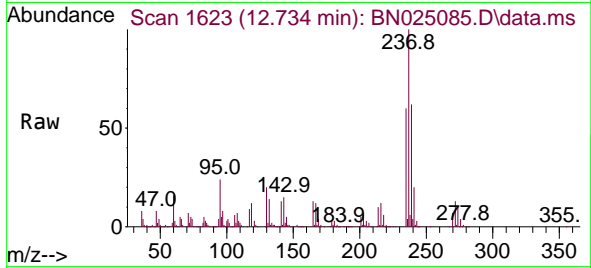
Tgt Ion:216 Resp: 751702
 Ion Ratio Lower Upper
 216 100
 214 80.3 62.2 93.4
 179 20.9 16.8 25.2
 108 19.3 15.0 22.6





#40
 Hexachlorocyclopentadiene
 Concen: 26.826 ng/uI
 RT: 12.734 min Scan# 1623
 Delta R.T. 0.000 min
 Lab File: BN025085.D
 Acq: 22 Apr 2023 20:30

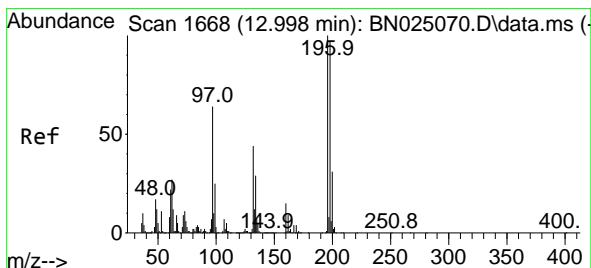
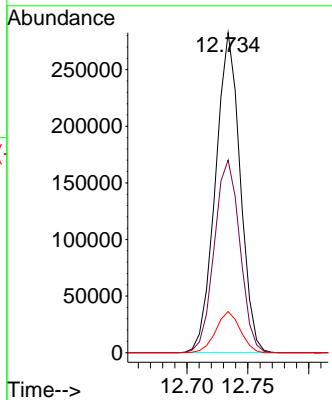
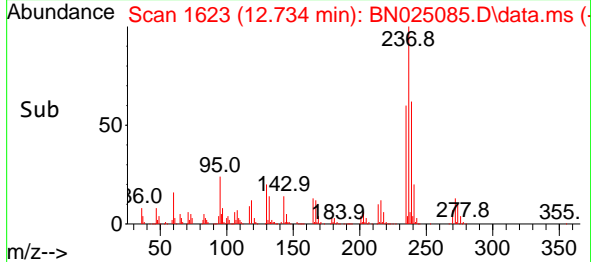
Instrument :
 BNA_N
 ClientSampleId :
 SLCS278



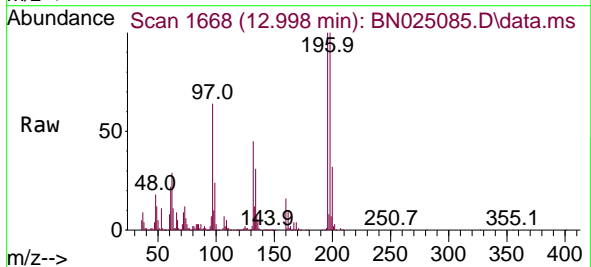
Tgt Ion:237 Resp: 39937
 Ion Ratio Lower Upper
 237 100
 235 60.2 49.9 74.9
 272 12.8 10.2 15.4

Manual Integrations
 APPROVED

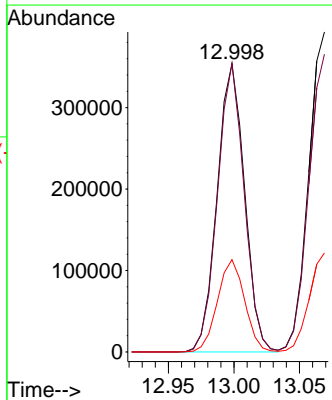
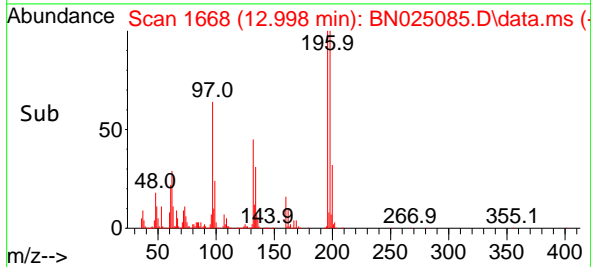
Reviewed By :Christian Giraldo 04/24/2023
 Supervised By :Jagrut Upadhyay 04/24/2023

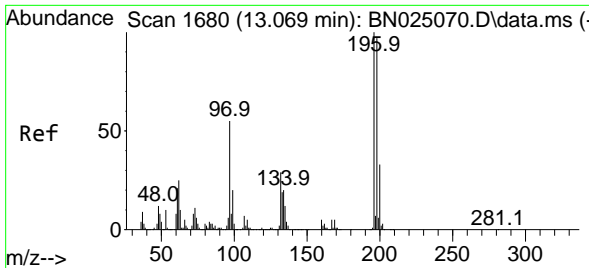


#41
 2,4,6-Trichlorophenol
 Concen: 30.875 ng/uI
 RT: 12.998 min Scan# 1668
 Delta R.T. 0.000 min
 Lab File: BN025085.D
 Acq: 22 Apr 2023 20:30



Tgt Ion:196 Resp: 515040
 Ion Ratio Lower Upper
 196 100
 198 100.1 74.5 111.7
 200 32.1 24.3 36.5





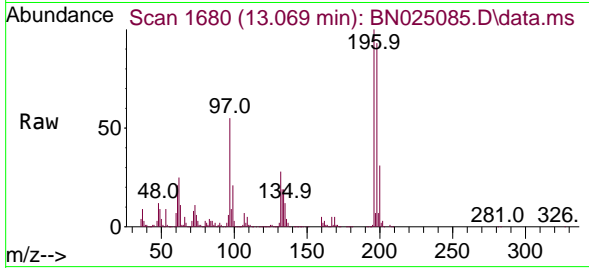
#42
 2,4,5-Trichlorophenol
 Concen: 32.180 ng/uI
 RT: 13.069 min Scan# 1680
 Delta R.T. 0.000 min
 Lab File: BN025085.D
 Acq: 22 Apr 2023 20:30

Instrument :

BNA_N

Client SampleId :

SLCS278

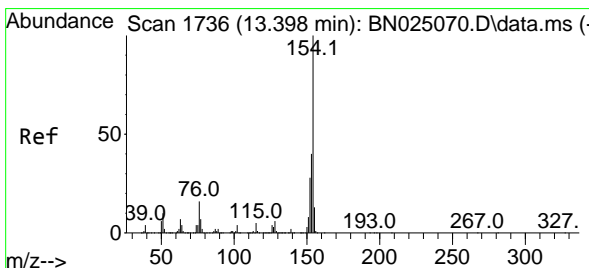
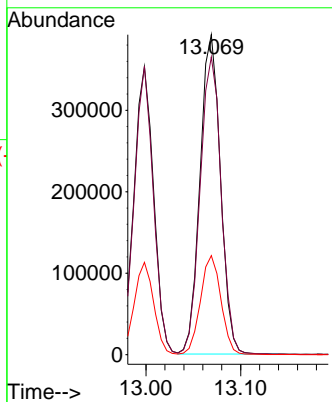
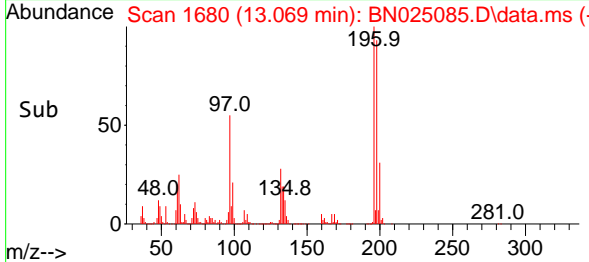


Tgt Ion:196 Resp: 58744
 Ion Ratio Lower Upper
 196 100
 198 93.0 78.2 117.2
 200 31.0 24.0 36.0

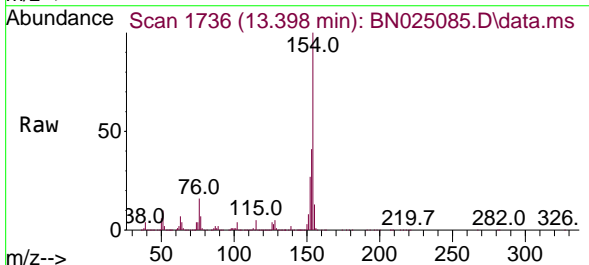
Manual Integrations

APPROVED

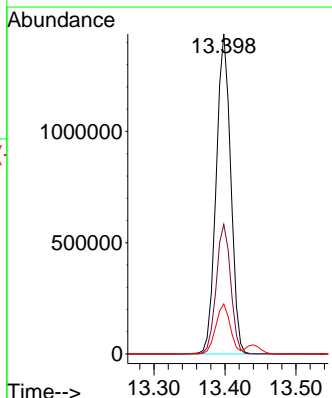
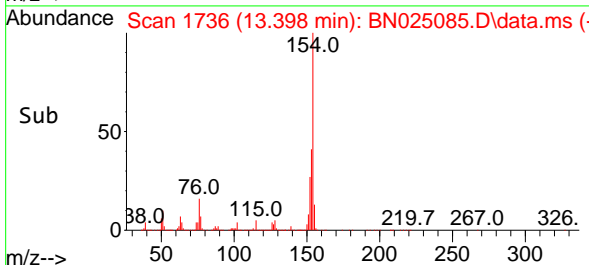
Reviewed By :Christian Giraldo 04/24/2023
 Supervised By :Jagrut Upadhyay 04/24/2023

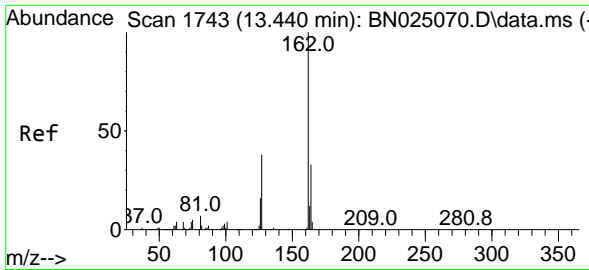


#43
 1,1'-Biphenyl
 Concen: 30.517 ng/uI
 RT: 13.398 min Scan# 1736
 Delta R.T. 0.000 min
 Lab File: BN025085.D
 Acq: 22 Apr 2023 20:30



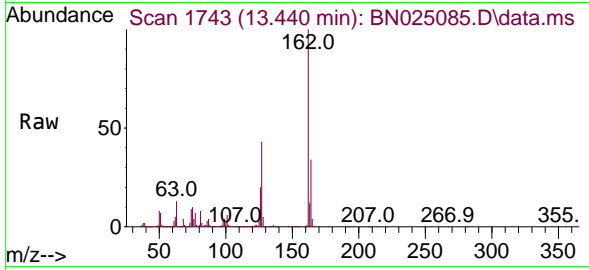
Tgt Ion:154 Resp: 2035100
 Ion Ratio Lower Upper
 154 100
 153 40.5 32.2 48.2
 76 15.7 12.4 18.6





#44
 2-Chloronaphthalene
 Concen: 30.278 ng/u1
 RT: 13.440 min Scan# 1743
 Delta R.T. 0.000 min
 Lab File: BN025085.D
 Acq: 22 Apr 2023 20:30

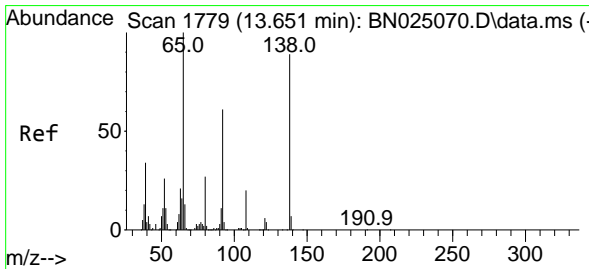
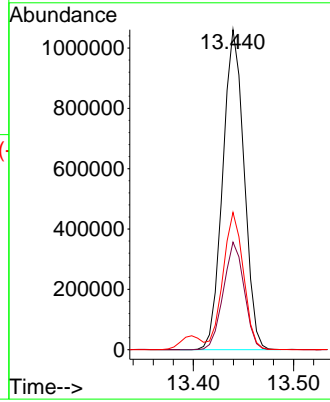
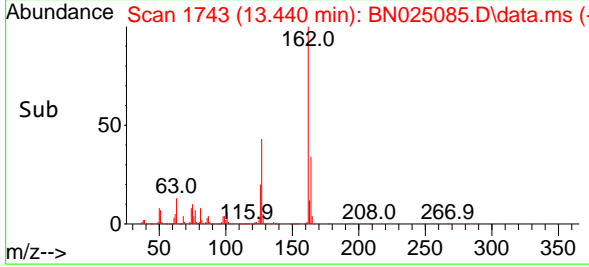
Instrument :
 BNA_N
 ClientSampleId :
 SLCS278



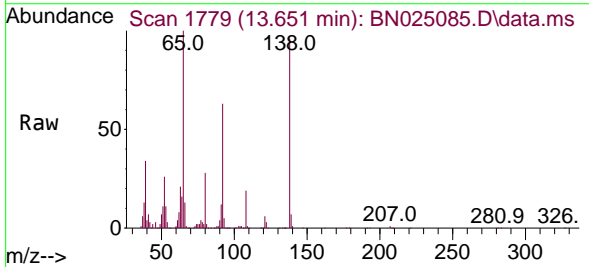
Tgt Ion:162 Resp: 156786
 Ion Ratio Lower Upper
 162 100
 164 33.6 25.9 38.9
 127 42.9 32.9 49.3

Manual Integrations
 APPROVED

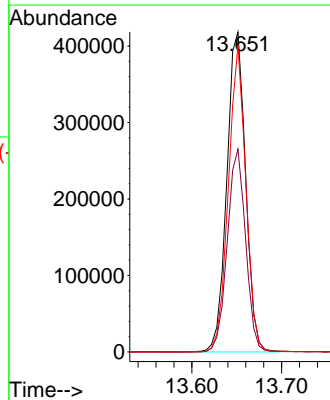
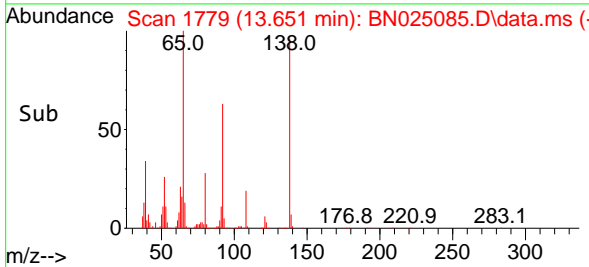
Reviewed By :Christian Giraldo 04/24/2023
 Supervised By :Jagrut Upadhyay 04/24/2023

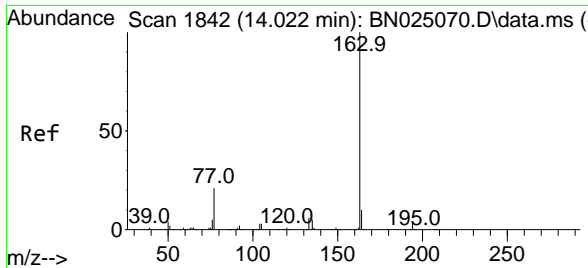


#45
 2-Nitroaniline
 Concen: 33.630 ng/u1
 RT: 13.651 min Scan# 1779
 Delta R.T. 0.000 min
 Lab File: BN025085.D
 Acq: 22 Apr 2023 20:30



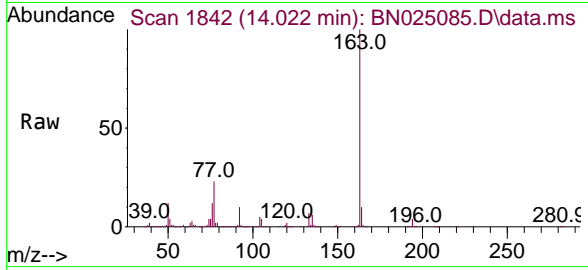
Tgt Ion: 65 Resp: 608087
 Ion Ratio Lower Upper
 65 100
 92 63.3 50.7 76.1
 138 95.9 71.4 107.2





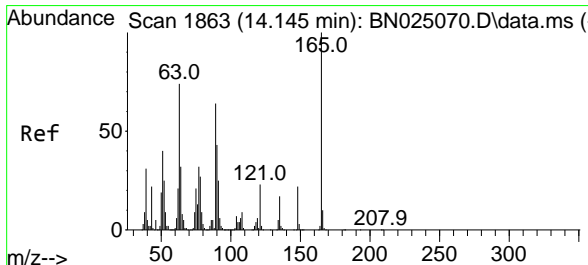
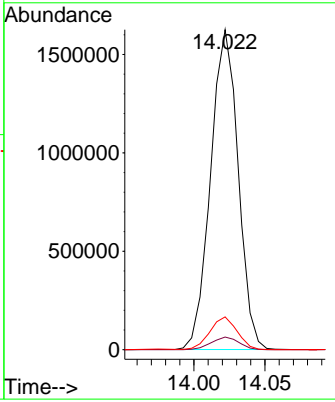
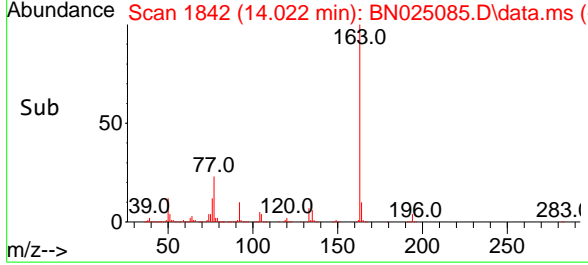
#47
 Dimethylphthalate
 Concen: 33.590 ng/ul
 RT: 14.022 min Scan# 1842
 Delta R.T. 0.000 min
 Lab File: BN025085.D
 Acq: 22 Apr 2023 20:30

Instrument : BNA_N
 ClientSampled : SLCS278

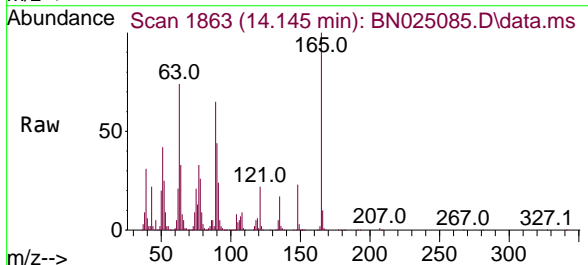


Tgt Ion:163 Resp: 219291
 Ion Ratio Lower Upper
 163 100
 194 4.0 3.3 4.9
 164 10.3 8.2 12.2

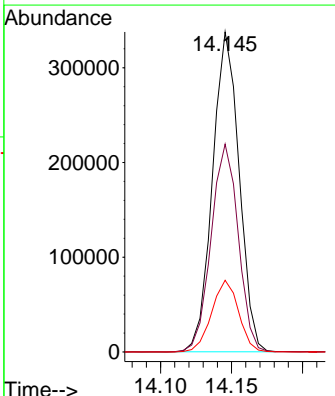
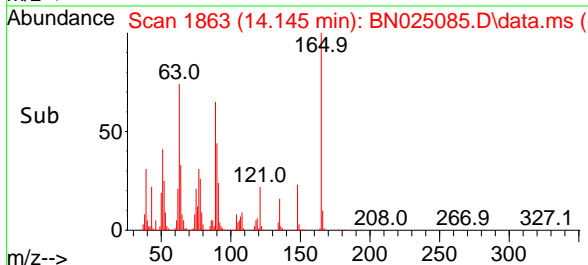
Manual Integrations
APPROVED
 Reviewed By :Christian Giraldo 04/24/2023
 Supervised By :Jagrut Upadhyay 04/24/2023

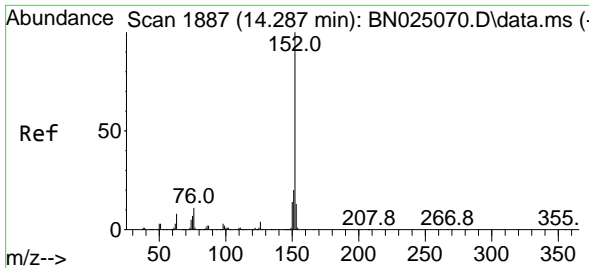


#48
 2,6-Dinitrotoluene
 Concen: 34.456 ng/ul
 RT: 14.145 min Scan# 1863
 Delta R.T. 0.000 min
 Lab File: BN025085.D
 Acq: 22 Apr 2023 20:30



Tgt Ion:165 Resp: 439080
 Ion Ratio Lower Upper
 165 100
 89 64.9 49.8 74.8
 121 22.4 17.2 25.8





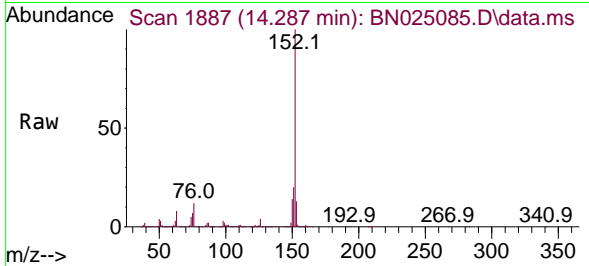
#50
 Acenaphthylene
 Concen: 31.351 ng/ul
 RT: 14.287 min Scan# 1887
 Delta R.T. 0.000 min
 Lab File: BN025085.D
 Acq: 22 Apr 2023 20:30

Instrument :

BNA_N

ClientSampleId :

SLCS278

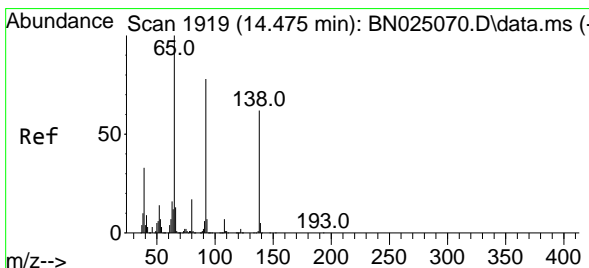
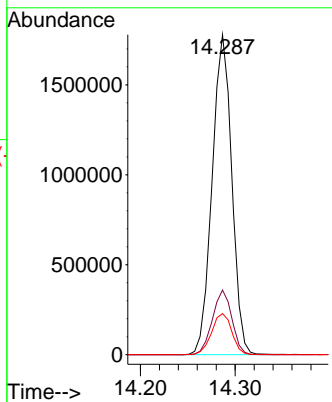
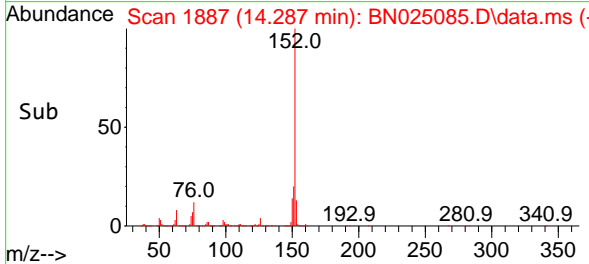


Tgt Ion:152 Resp: 2560360
 Ion Ratio Lower Upper
 152 100
 151 20.2 16.2 24.4
 153 12.8 10.6 16.0

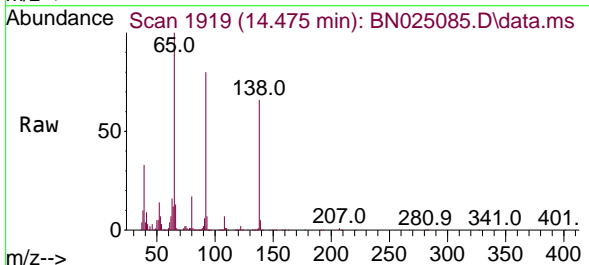
Manual Integrations

APPROVED

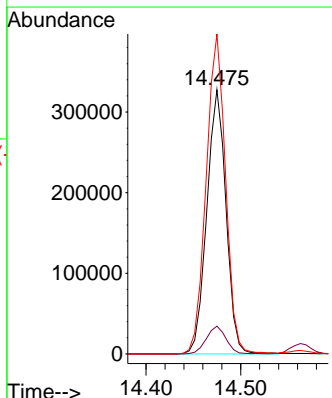
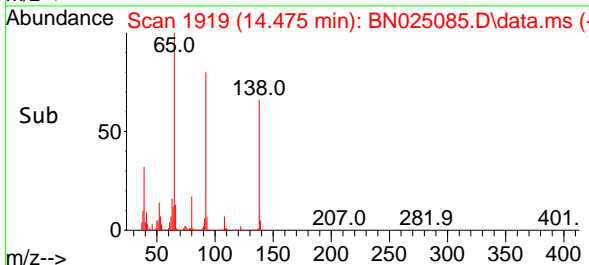
Reviewed By :Christian Giraldo 04/24/2023
 Supervised By :Jagrut Upadhyay 04/24/2023

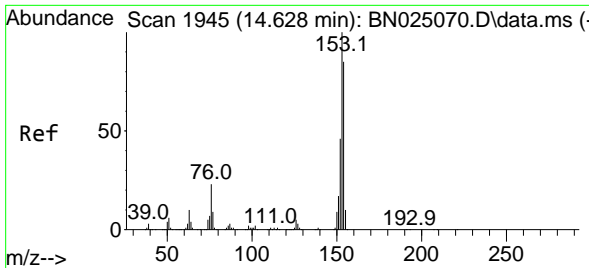


#51
 3-Nitroaniline
 Concen: 34.421 ng/ul
 RT: 14.475 min Scan# 1919
 Delta R.T. 0.000 min
 Lab File: BN025085.D
 Acq: 22 Apr 2023 20:30



Tgt Ion:138 Resp: 460950
 Ion Ratio Lower Upper
 138 100
 108 10.5 8.6 12.8
 92 121.1 99.5 149.3





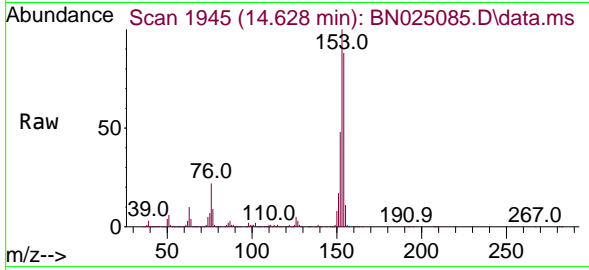
#52
 Acenaphthene
 Concen: 31.730 ng/ul
 RT: 14.628 min Scan# 1945
 Delta R.T. 0.000 min
 Lab File: BN025085.D
 Acq: 22 Apr 2023 20:30

Instrument :

BNA_N

ClientSampleId :

SLCS278

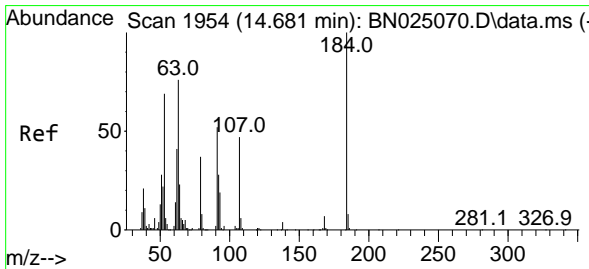
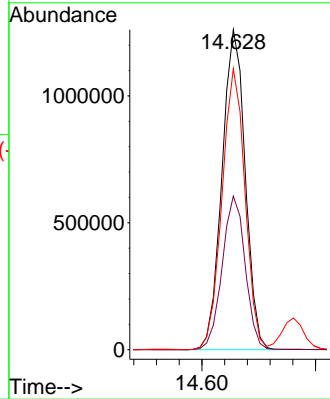
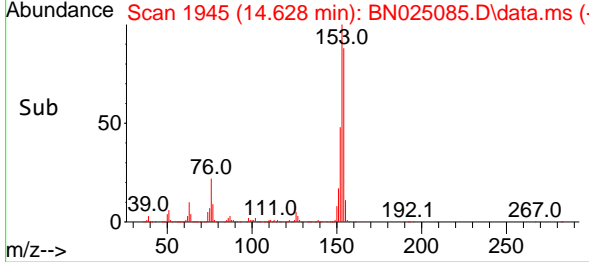


Tgt Ion:153 Resp: 179146
 Ion Ratio Lower Upper
 153 100
 152 48.0 38.8 58.2
 154 87.8 70.3 105.5

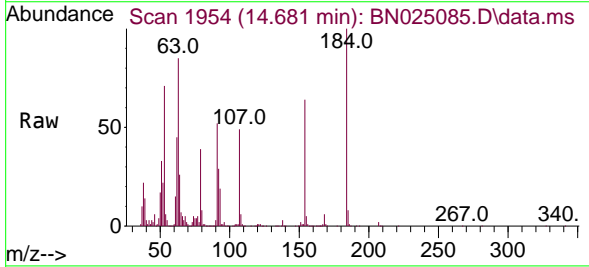
Manual Integrations

APPROVED

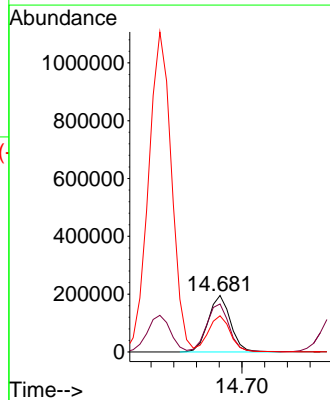
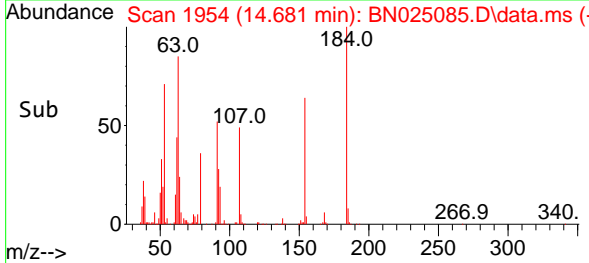
Reviewed By :Christian Giraldo 04/24/2023
 Supervised By :Jagrut Upadhyay 04/24/2023

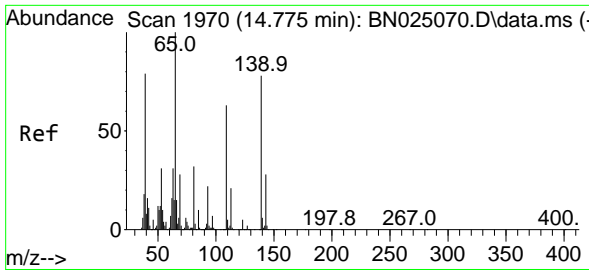


#53
 2,4-Dinitrophenol
 Concen: 32.452 ng/ul
 RT: 14.681 min Scan# 1954
 Delta R.T. 0.000 min
 Lab File: BN025085.D
 Acq: 22 Apr 2023 20:30



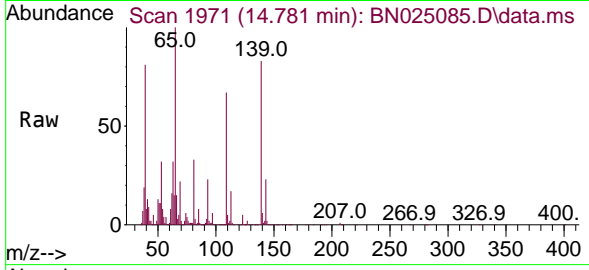
Tgt Ion:184 Resp: 265893
 Ion Ratio Lower Upper
 184 100
 63 84.9 62.6 93.8
 154 64.0 50.9 76.3





#55
 4-Nitrophenol
 Concen: 34.194 ng/u1
 RT: 14.781 min Scan# 1970
 Delta R.T. 0.006 min
 Lab File: BN025085.D
 Acq: 22 Apr 2023 20:30

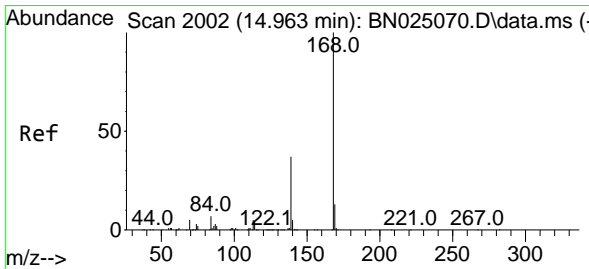
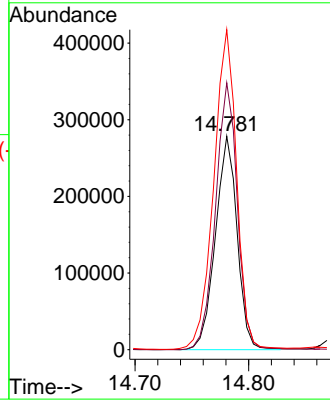
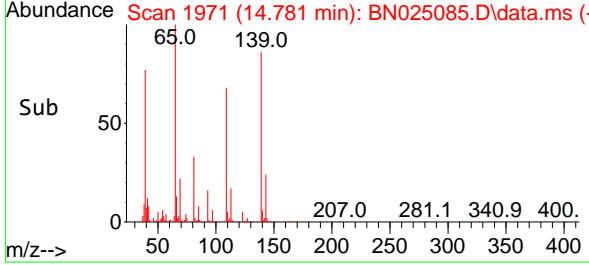
Instrument :
 BNA_N
 ClientSampleId :
 SLCS278



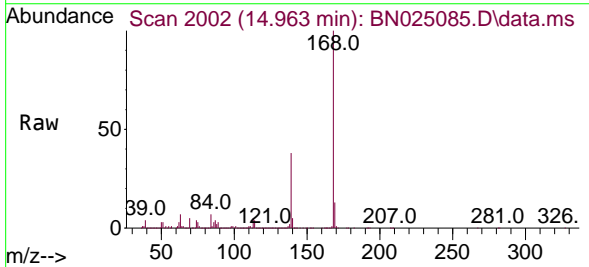
Tgt Ion:109 Resp: 37016
 Ion Ratio Lower Upper
 109 100
 139 125.1 104.3 156.5
 65 149.9 124.3 186.5

Manual Integrations
APPROVED

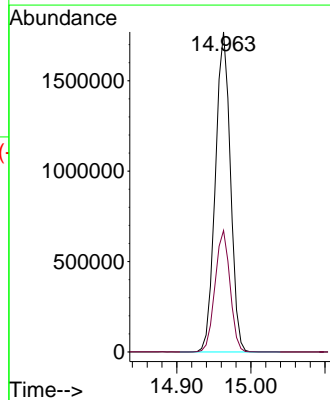
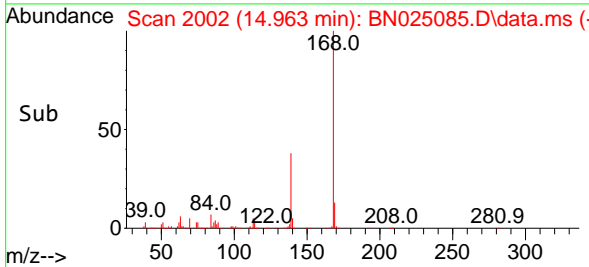
Reviewed By :Christian Giraldo 04/24/2023
 Supervised By :Jagrut Upadhyay 04/24/2023

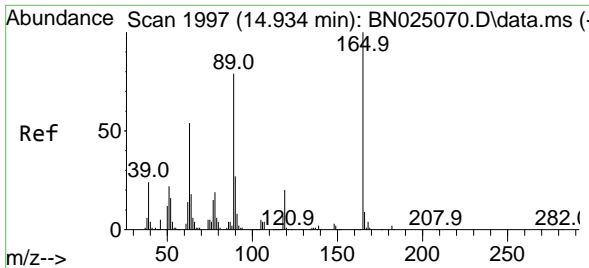


#56
 Dibenzofuran
 Concen: 32.006 ng/u1
 RT: 14.963 min Scan# 2002
 Delta R.T. 0.000 min
 Lab File: BN025085.D
 Acq: 22 Apr 2023 20:30



Tgt Ion:168 Resp: 2490768
 Ion Ratio Lower Upper
 168 100
 139 37.9 32.1 48.1





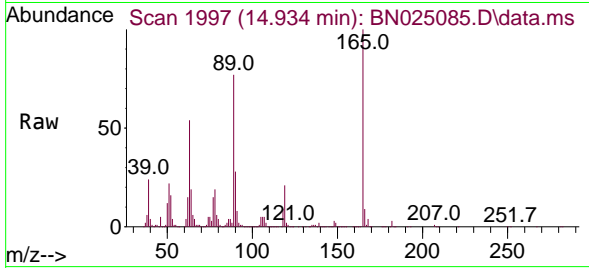
#57
 2,4-Dinitrotoluene
 Concen: 35.763 ng/ul
 RT: 14.934 min Scan# 1997
 Delta R.T. 0.000 min
 Lab File: BN025085.D
 Acq: 22 Apr 2023 20:30

Instrument :

BNA_N

ClientSampleId :

SLCS278

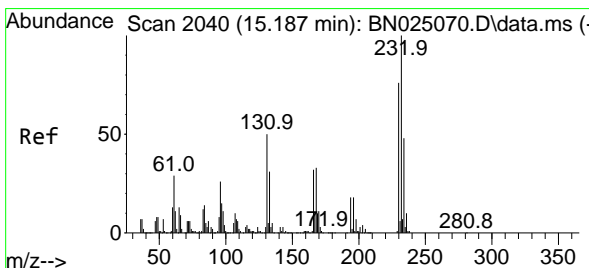
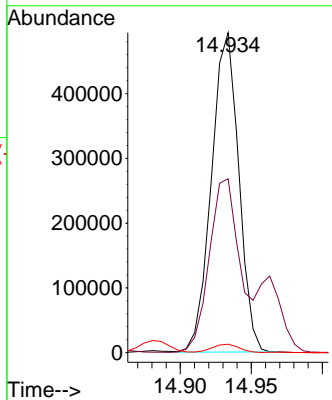
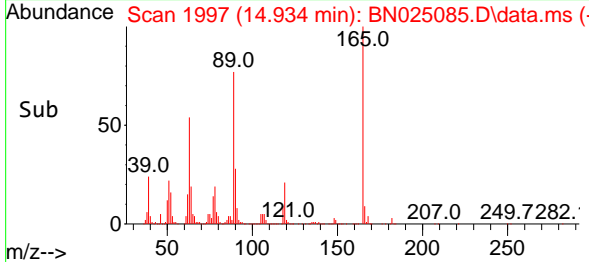


Tgt Ion:165 Resp: 65969
 Ion Ratio Lower Upper
 165 100
 63 54.4 45.4 68.0
 182 2.6 2.2 3.2

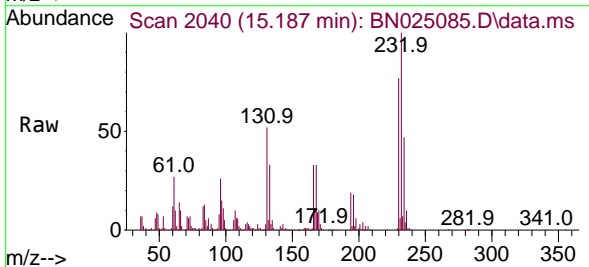
Manual Integrations

APPROVED

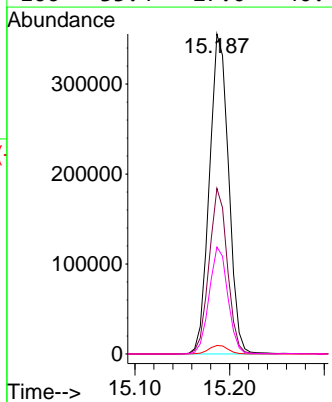
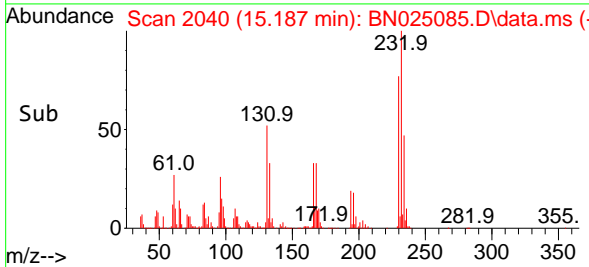
Reviewed By :Christian Giraldo 04/24/2023
 Supervised By :Jagrut Upadhyay 04/24/2023

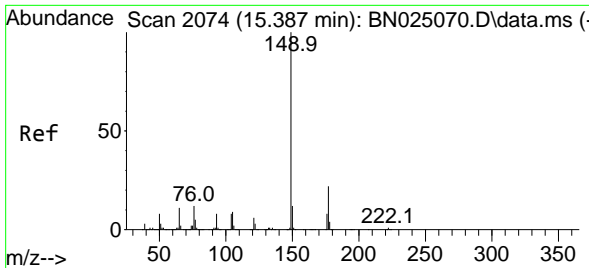


#58
 2,3,4,6-Tetrachlorophenol
 Concen: 33.335 ng/ul
 RT: 15.187 min Scan# 2040
 Delta R.T. 0.000 min
 Lab File: BN025085.D
 Acq: 22 Apr 2023 20:30



Tgt Ion:232 Resp: 501092
 Ion Ratio Lower Upper
 232 100
 131 51.8 40.6 61.0
 130 2.7 2.2 3.2
 166 33.4 27.0 40.4





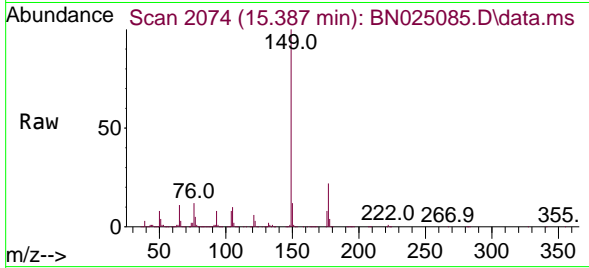
#59
 Diethylphthalate
 Concen: 34.567 ng/u1
 RT: 15.387 min Scan# 2074
 Delta R.T. 0.000 min
 Lab File: BN025085.D
 Acq: 22 Apr 2023 20:30

Instrument :

BNA_N

ClientSampleId :

SLCS278

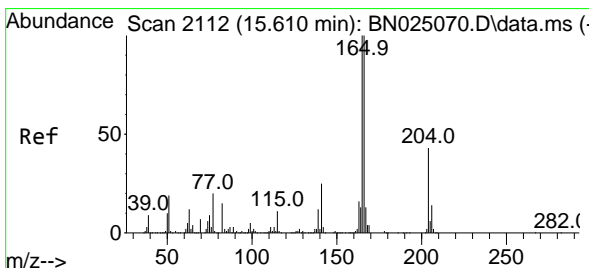
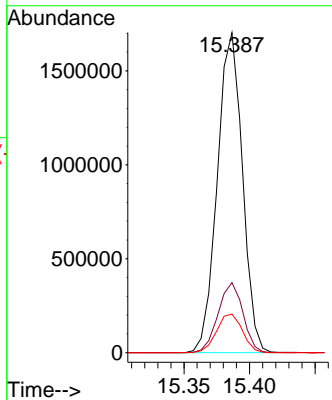
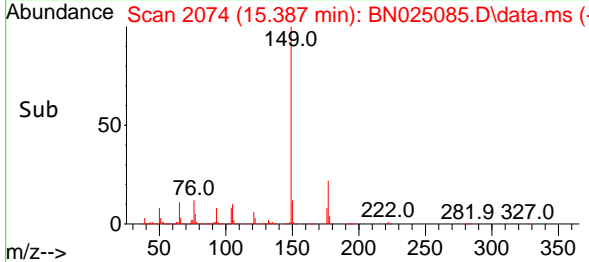


Tgt Ion:149 Resp: 226768
 Ion Ratio Lower Upper
 149 100
 177 21.9 16.6 24.8
 150 12.0 10.1 15.1

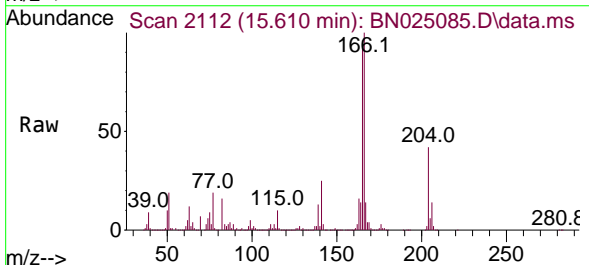
Manual Integrations

APPROVED

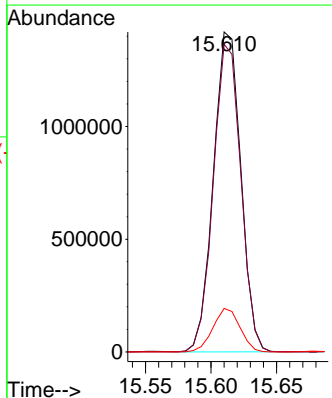
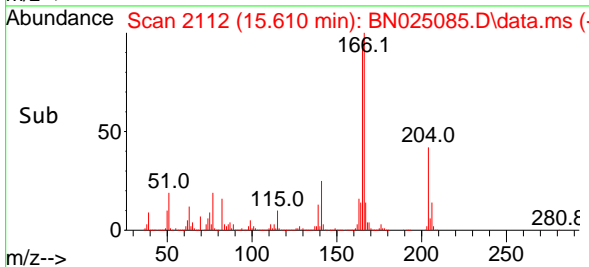
Reviewed By :Christian Giraldo 04/24/2023
 Supervised By :Jagrut Upadhyay 04/24/2023

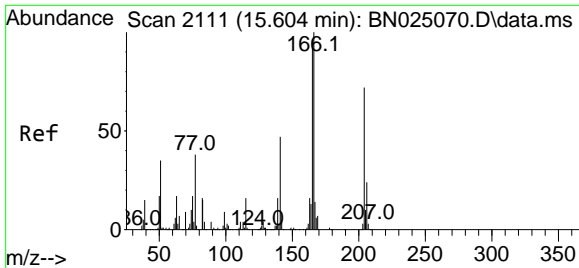


#61
 Fluorene
 Concen: 32.964 ng/u1
 RT: 15.610 min Scan# 2112
 Delta R.T. 0.000 min
 Lab File: BN025085.D
 Acq: 22 Apr 2023 20:30



Tgt Ion:166 Resp: 2063379
 Ion Ratio Lower Upper
 166 100
 165 96.2 79.1 118.7
 167 13.6 10.8 16.2





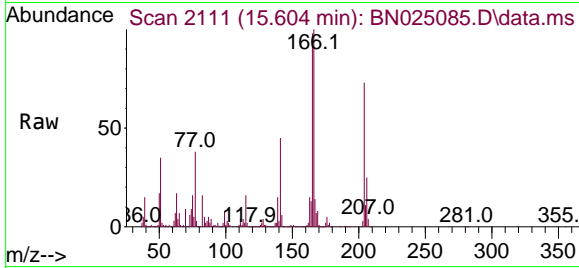
#62
 4-Chlorophenyl-phenylether
 Concen: 33.540 ng/ul
 RT: 15.604 min Scan# 2111
 Delta R.T. 0.000 min
 Lab File: BN025085.D
 Acq: 22 Apr 2023 20:30

Instrument :

BNA_N

ClientSampleId :

SLCS278

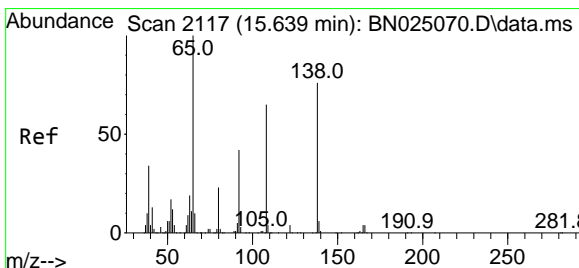
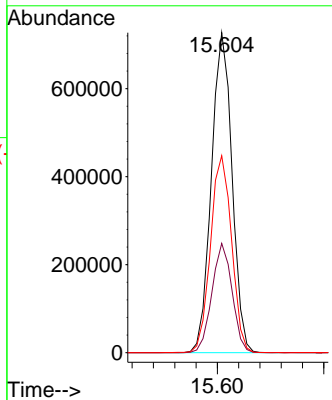
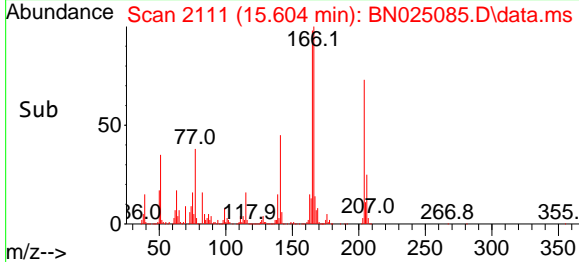


Tgt Ion:204 Resp: 97719
 Ion Ratio Lower Upper
 204 100
 206 34.1 26.0 39.0
 141 61.6 51.8 77.8

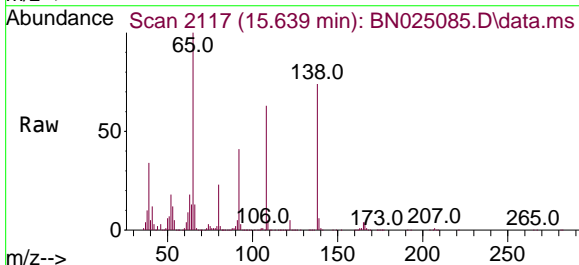
Manual Integrations

APPROVED

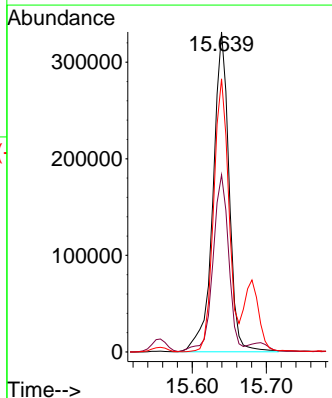
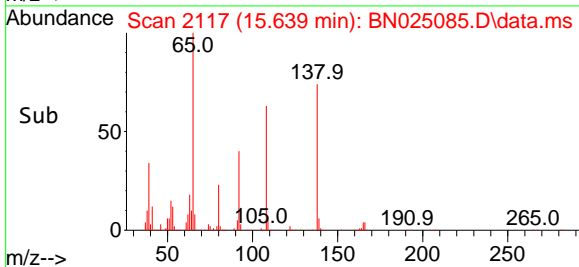
Reviewed By :Christian Giraldo 04/24/2023
 Supervised By :Jagrut Upadhyay 04/24/2023

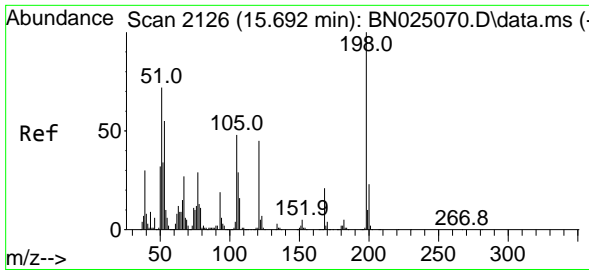


#63
 4-Nitroaniline
 Concen: 37.839 ng/ul
 RT: 15.639 min Scan# 2117
 Delta R.T. 0.000 min
 Lab File: BN025085.D
 Acq: 22 Apr 2023 20:30



Tgt Ion:138 Resp: 499355
 Ion Ratio Lower Upper
 138 100
 92 55.4 43.3 64.9
 108 85.4 64.2 96.4





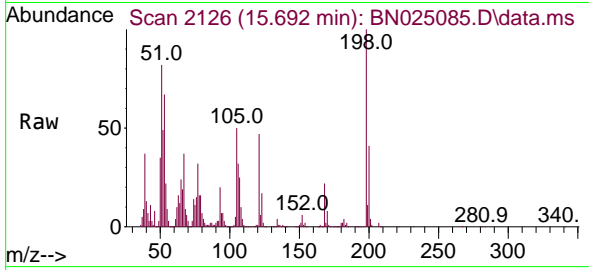
#66
 4,6-Dinitro-2-methylphenol
 Concen: 32.806 ng/ul
 RT: 15.692 min Scan# 2126
 Delta R.T. 0.000 min
 Lab File: BN025085.D
 Acq: 22 Apr 2023 20:30

Instrument :

BNA_N

ClientSampleId :

SLCS278

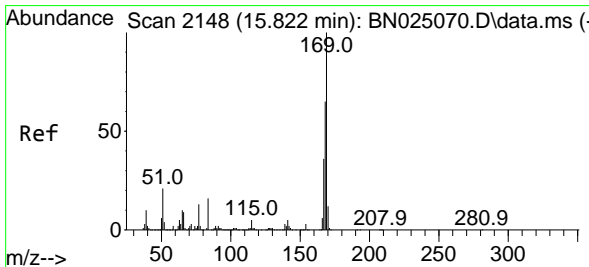
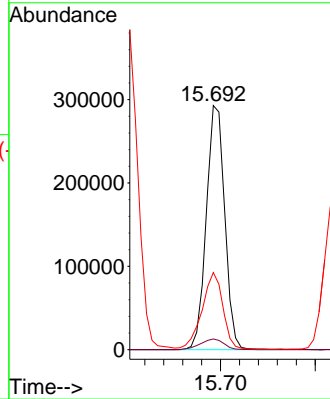
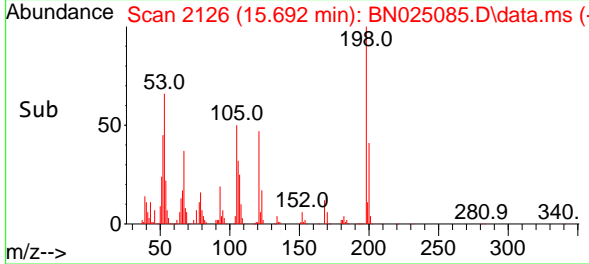


Tgt Ion:198 Resp: 396838
 Ion Ratio Lower Upper
 198 100
 182 4.4 3.4 5.0
 77 31.6 23.7 35.5

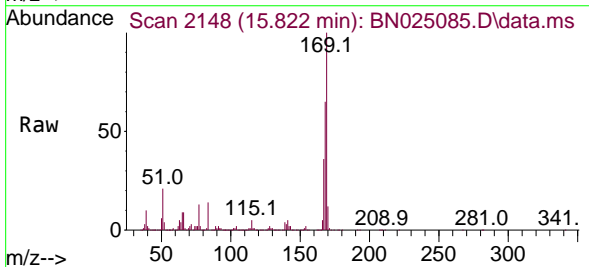
Manual Integrations

APPROVED

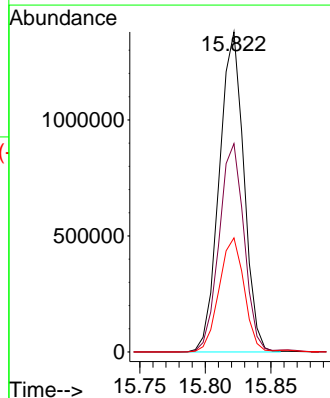
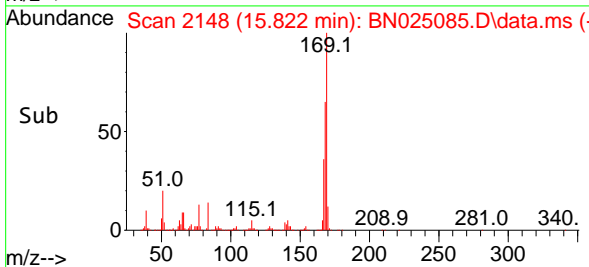
Reviewed By :Christian Giraldo 04/24/2023
 Supervised By :Jagrut Upadhyay 04/24/2023

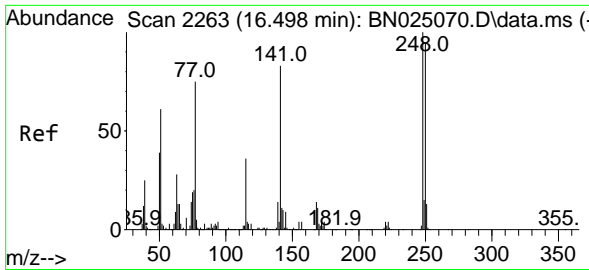


#67
 N-Nitrosodiphenylamine
 Concen: 31.217 ng/ul
 RT: 15.822 min Scan# 2148
 Delta R.T. 0.000 min
 Lab File: BN025085.D
 Acq: 22 Apr 2023 20:30



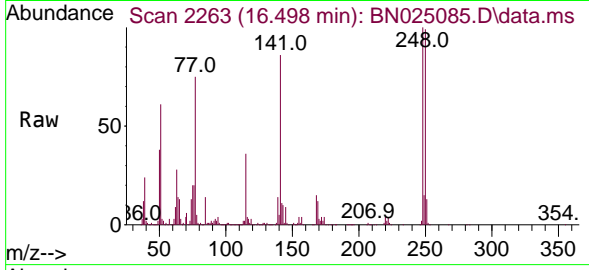
Tgt Ion:169 Resp: 1797050
 Ion Ratio Lower Upper
 169 100
 168 65.1 54.3 81.5
 167 35.6 27.6 41.4





#68
 4-Bromophenyl-phenylether
 Concen: 31.632 ng/ul
 RT: 16.498 min Scan# 2263
 Delta R.T. 0.000 min
 Lab File: BN025085.D
 Acq: 22 Apr 2023 20:30

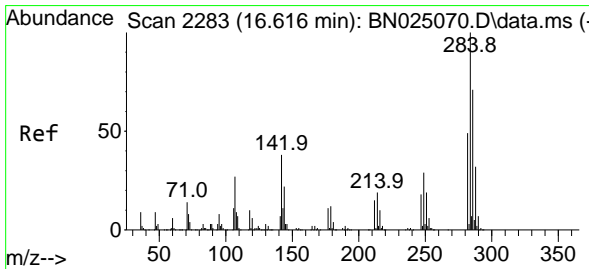
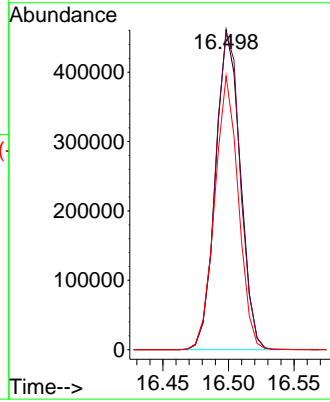
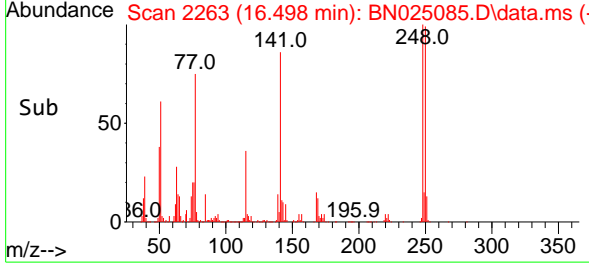
Instrument :
 BNA_N
 ClientSampleId :
 SLCS278



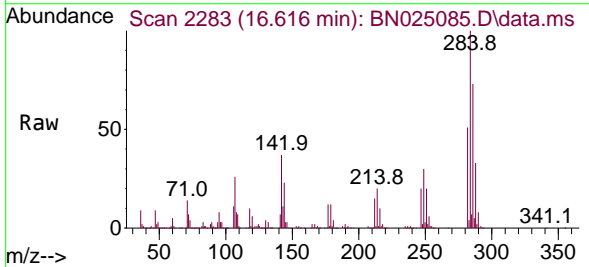
Tgt Ion:248 Resp: 603300
 Ion Ratio Lower Upper
 248 100
 250 98.9 77.1 115.7
 141 85.5 62.3 93.5

Manual Integrations
 APPROVED

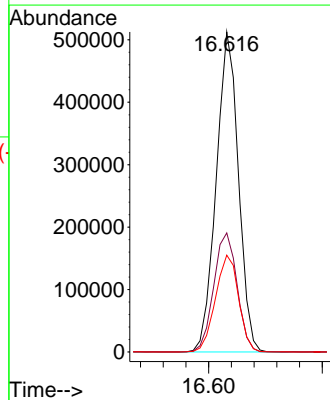
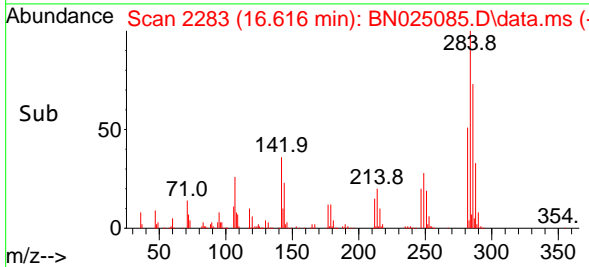
Reviewed By :Christian Giraldo 04/24/2023
 Supervised By :Jagrut Upadhyay 04/24/2023

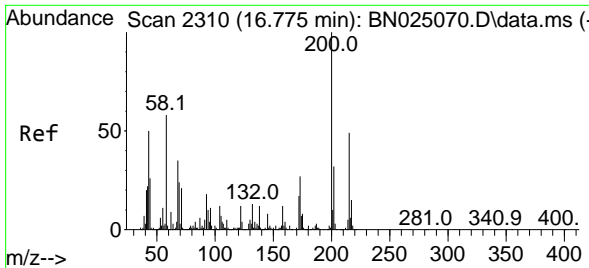


#69
 Hexachlorobenzene
 Concen: 32.229 ng/ul
 RT: 16.616 min Scan# 2283
 Delta R.T. 0.000 min
 Lab File: BN025085.D
 Acq: 22 Apr 2023 20:30



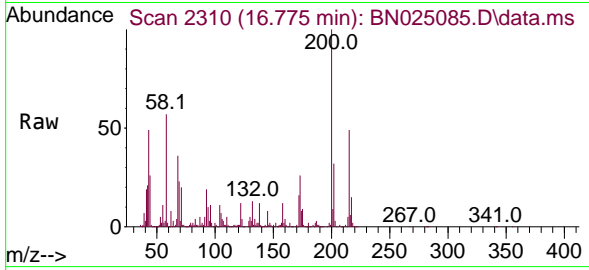
Tgt Ion:284 Resp: 695964
 Ion Ratio Lower Upper
 284 100
 142 37.2 31.0 46.6
 249 30.2 25.1 37.7





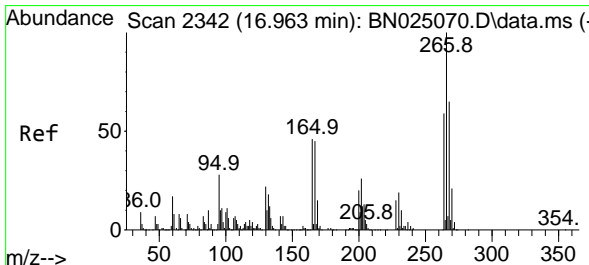
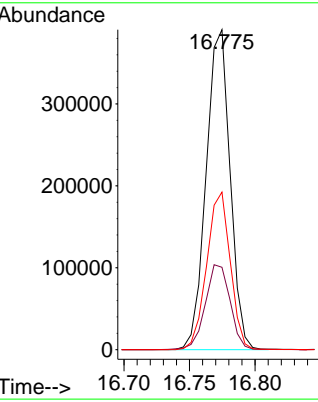
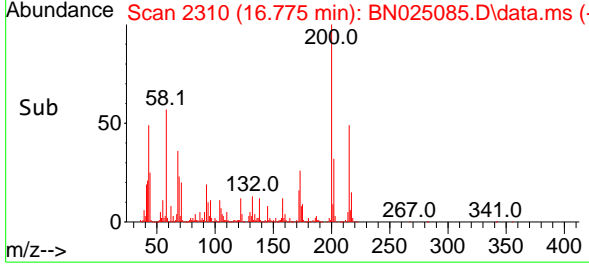
#70
 Atrazine
 Concen: 25.313 ng/u1
 RT: 16.775 min Scan# 21
 Delta R.T. 0.000 min
 Lab File: BN025085.D
 Acq: 22 Apr 2023 20:30

Instrument : BNA_N
 ClientSampleId : SLCS278

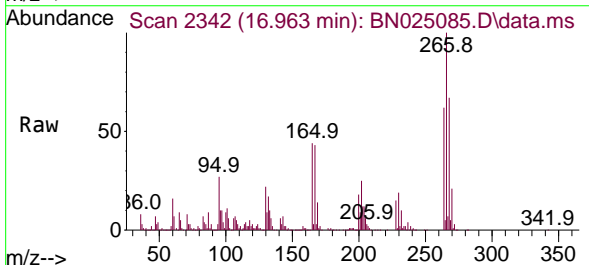


Tgt Ion:200 Resp: 49583
 Ion Ratio Lower Upper
 200 100
 173 25.8 21.4 32.2
 215 49.2 38.2 57.2

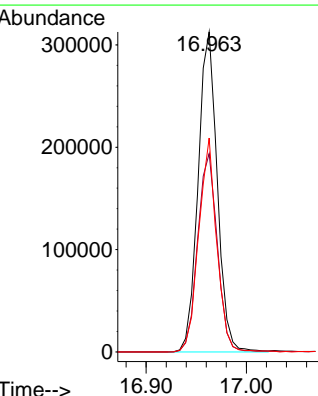
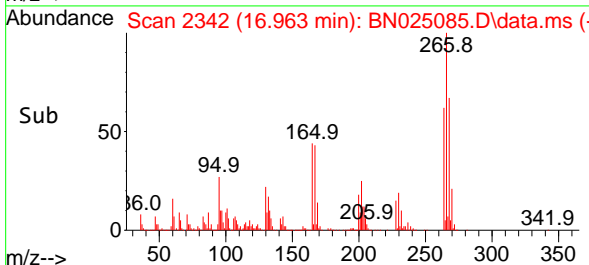
Manual Integrations
APPROVED
 Reviewed By :Christian Giraldo 04/24/2023
 Supervised By :Jagrut Upadhyay 04/24/2023

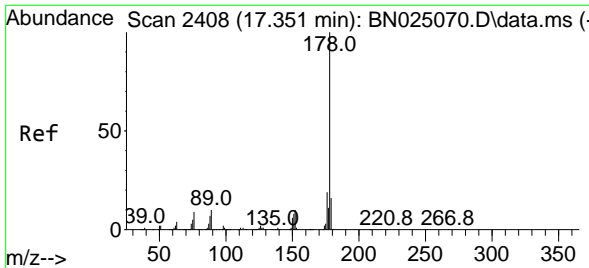


#71
 Pentachlorophenol
 Concen: 30.959 ng/u1
 RT: 16.963 min Scan# 2342
 Delta R.T. 0.000 min
 Lab File: BN025085.D
 Acq: 22 Apr 2023 20:30



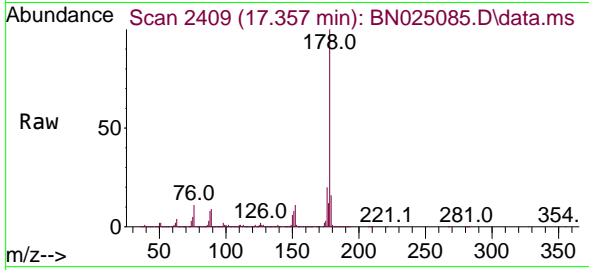
Tgt Ion:266 Resp: 415539
 Ion Ratio Lower Upper
 266 100
 264 62.0 52.7 79.1
 268 66.9 51.4 77.0





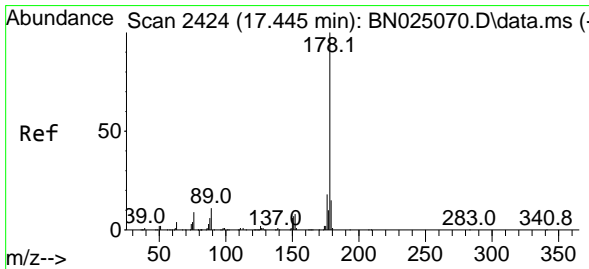
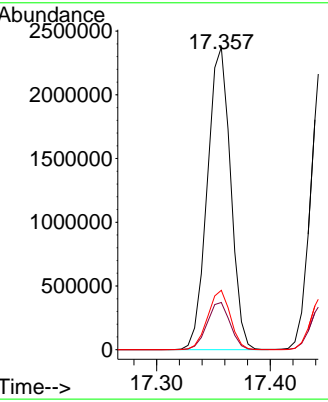
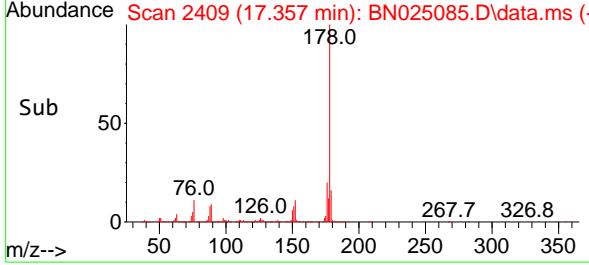
#72
 Phenanthrene
 Concen: 31.504 ng/u1
 RT: 17.357 min Scan# 2409
 Delta R.T. 0.006 min
 Lab File: BN025085.D
 Acq: 22 Apr 2023 20:30

Instrument : BNA_N
 ClientSampleId : SLCS278

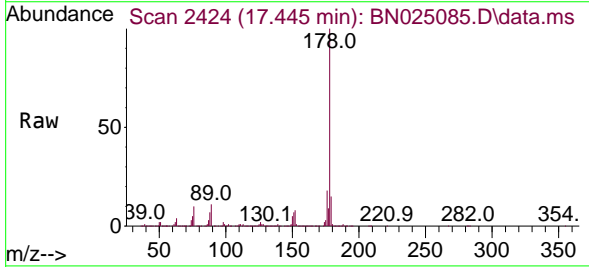


Tgt Ion:178 Resp: 3373334
 Ion Ratio Lower Upper
 178 100
 179 15.6 12.6 19.0
 176 19.6 15.2 22.8

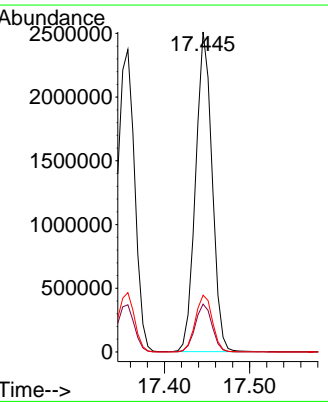
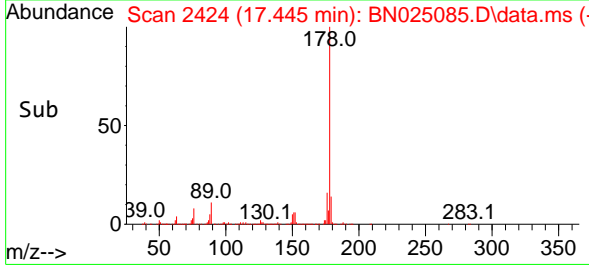
Manual Integrations
APPROVED
 Reviewed By :Christian Giraldo 04/24/2023
 Supervised By :Jagrut Upadhyay 04/24/2023

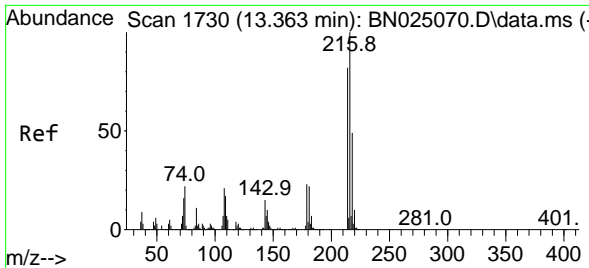


#74
 Anthracene
 Concen: 31.345 ng/u1
 RT: 17.445 min Scan# 2424
 Delta R.T. 0.000 min
 Lab File: BN025085.D
 Acq: 22 Apr 2023 20:30



Tgt Ion:178 Resp: 3382046
 Ion Ratio Lower Upper
 178 100
 179 14.9 12.2 18.4
 176 17.8 14.6 21.8





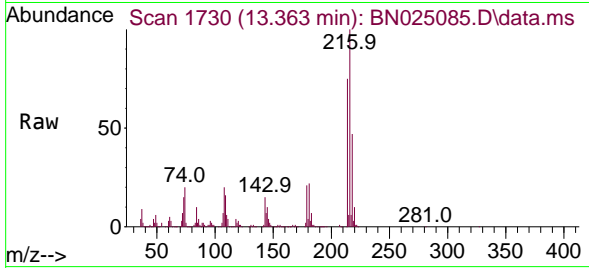
#75
 1,2,3,4-Tetrachlorobenzene
 Concen: 28.444 ng/uL
 RT: 13.363 min Scan# 11
 Delta R.T. 0.000 min
 Lab File: BN025085.D
 Acq: 22 Apr 2023 20:30

Instrument :

BNA_N

Client Sample Id :

SLCS278

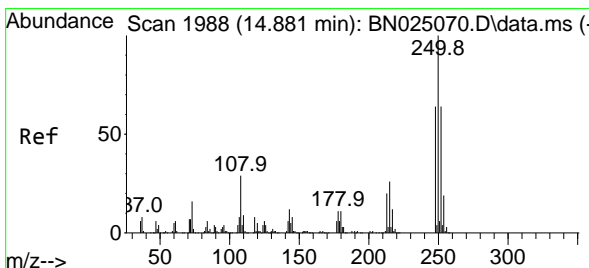
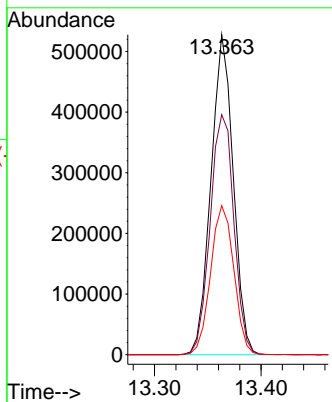
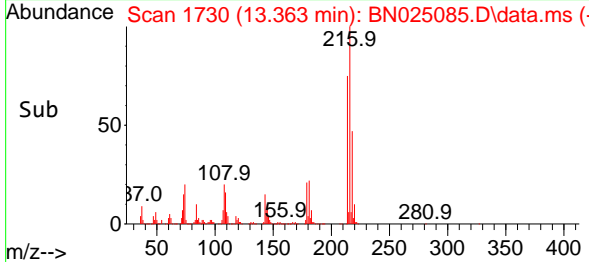


Tgt Ion: 216 Resp: 76767
 Ion Ratio Lower Upper
 216 100
 214 75.0 62.5 93.7
 218 46.6 37.7 56.5

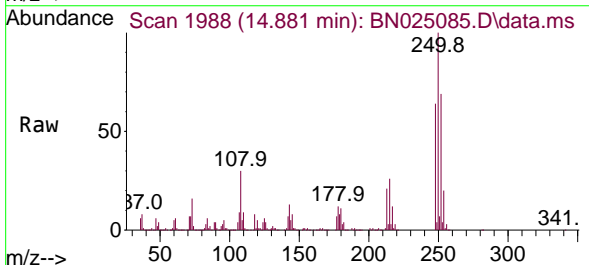
Manual Integrations

APPROVED

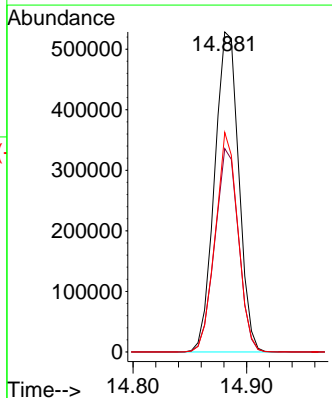
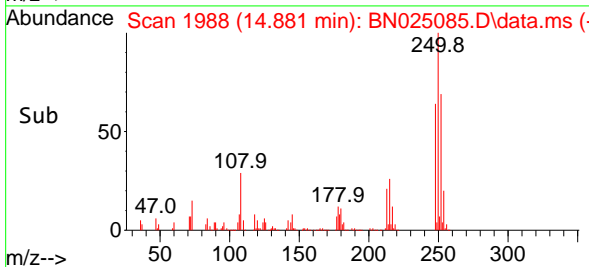
Reviewed By : Christian Giraldo 04/24/2023
 Supervised By : Jagrut Upadhyay 04/24/2023

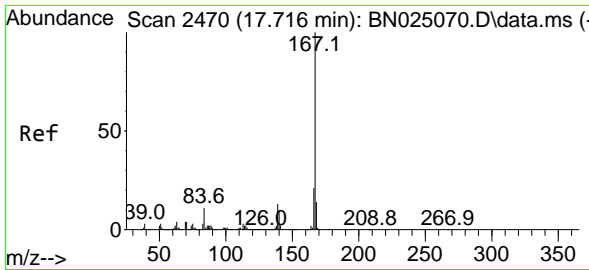


#76
 Pentachlorobenzene
 Concen: 30.266 ng/uL
 RT: 14.881 min Scan# 1988
 Delta R.T. 0.000 min
 Lab File: BN025085.D
 Acq: 22 Apr 2023 20:30



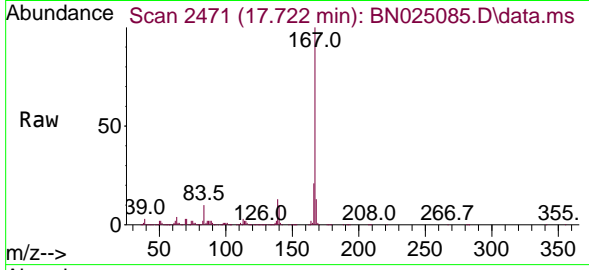
Tgt Ion: 250 Resp: 781514
 Ion Ratio Lower Upper
 250 100
 248 63.5 50.8 76.2
 252 68.6 51.8 77.6





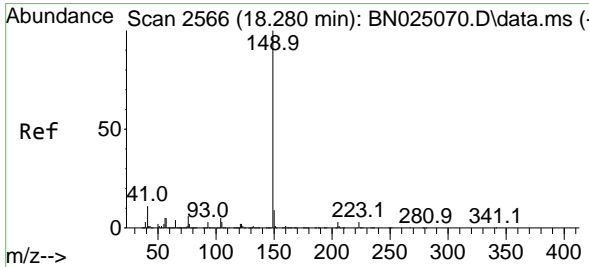
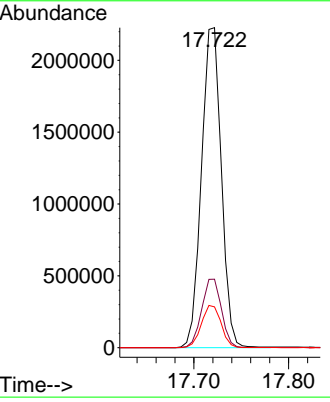
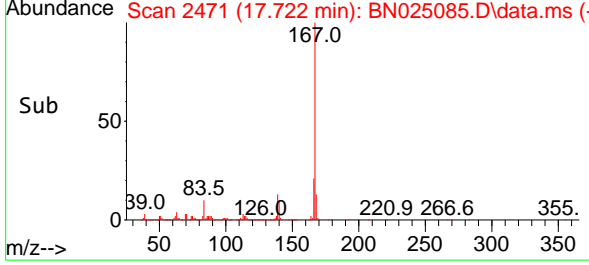
#77
 Carbazole
 Concen: 33.269 ng/uI
 RT: 17.722 min Scan# 2471
 Delta R.T. 0.006 min
 Lab File: BN025085.D
 Acq: 22 Apr 2023 20:30

Instrument :
 BNA_N
ClientSampleId :
 SLCS278

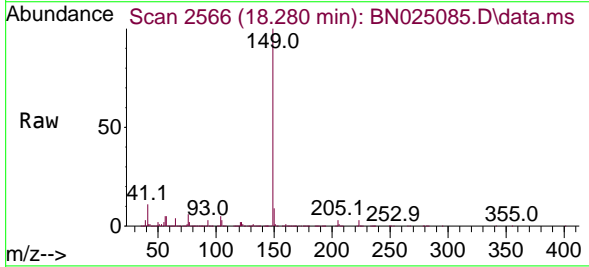


Tgt Ion:167 Resp: 324127
 Ion Ratio Lower Upper
 167 100
 166 21.4 16.6 24.8
 139 12.8 10.2 15.4

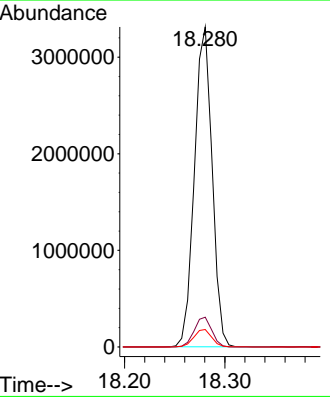
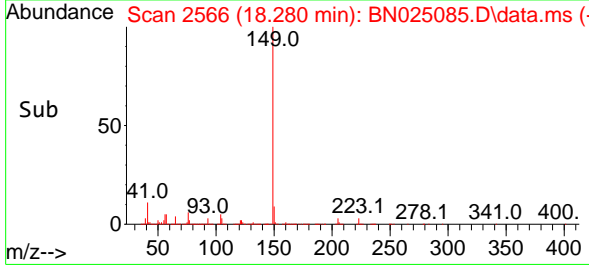
Manual Integrations
APPROVED
 Reviewed By :Christian Giraldo 04/24/2023
 Supervised By :Jagrut Upadhyay 04/24/2023

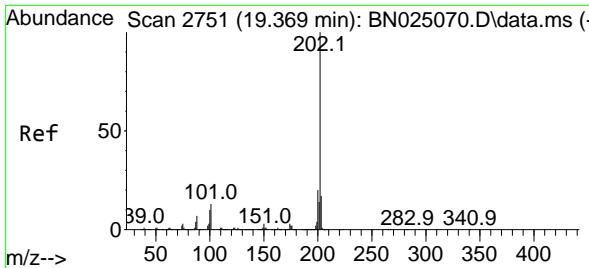


#78
 Di-n-butylphthalate
 Concen: 35.161 ng/uI
 RT: 18.280 min Scan# 2566
 Delta R.T. 0.000 min
 Lab File: BN025085.D
 Acq: 22 Apr 2023 20:30



Tgt Ion:149 Resp: 4065910
 Ion Ratio Lower Upper
 149 100
 150 9.3 7.4 11.2
 104 5.5 4.2 6.4





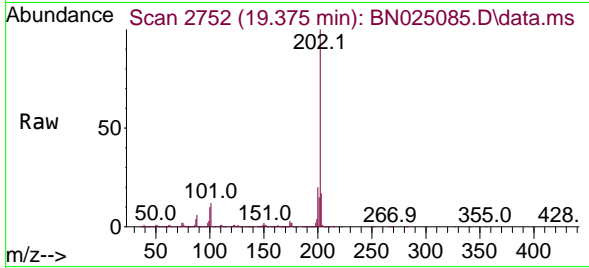
#80
 Fluoranthene
 Concen: 31.194 ng/u1
 RT: 19.375 min Scan# 21
 Delta R.T. 0.006 min
 Lab File: BN025085.D
 Acq: 22 Apr 2023 20:30

Instrument :

BNA_N

ClientSampleId :

SLCS278

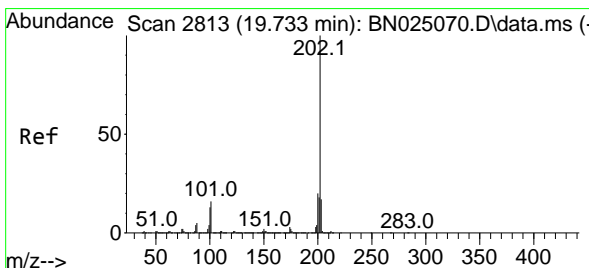
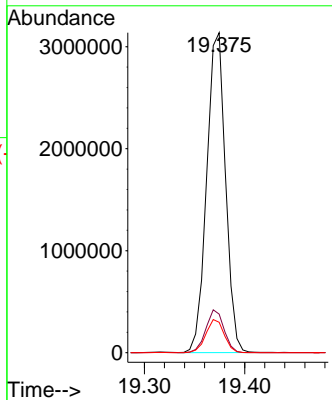
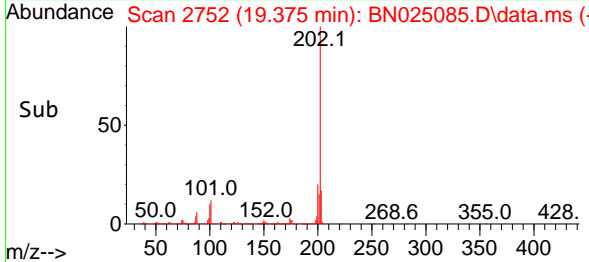


Tgt Ion:202 Resp: 408776
 Ion Ratio Lower Upper
 202 100
 101 12.0 10.7 16.1
 100 9.5 7.9 11.9

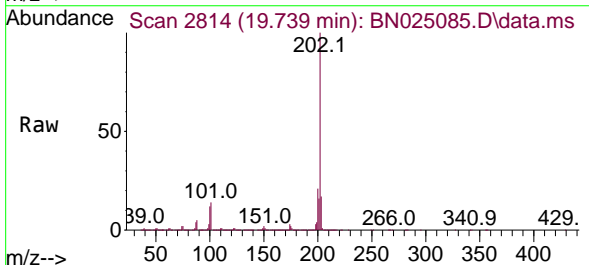
Manual Integrations

APPROVED

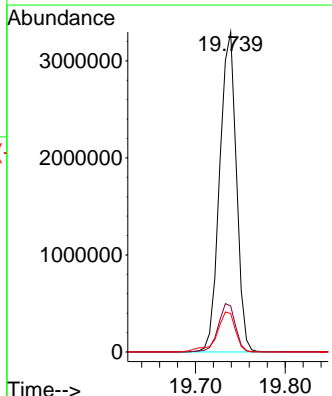
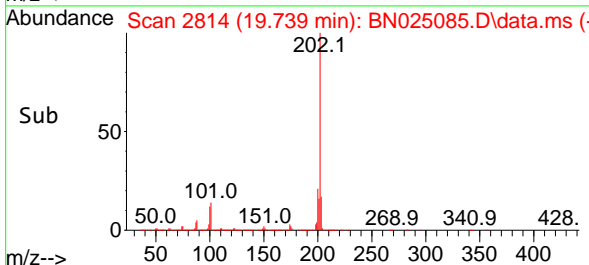
Reviewed By :Christian Giraldo 04/24/2023
 Supervised By :Jagrut Upadhyay 04/24/2023

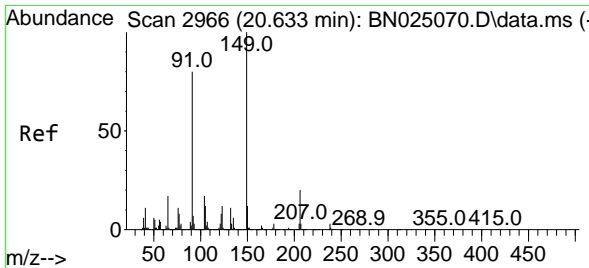


#82
 Pyrene
 Concen: 30.899 ng/u1
 RT: 19.739 min Scan# 2814
 Delta R.T. 0.006 min
 Lab File: BN025085.D
 Acq: 22 Apr 2023 20:30



Tgt Ion:202 Resp: 4262011
 Ion Ratio Lower Upper
 202 100
 101 14.4 13.0 19.6
 100 12.0 11.0 16.6





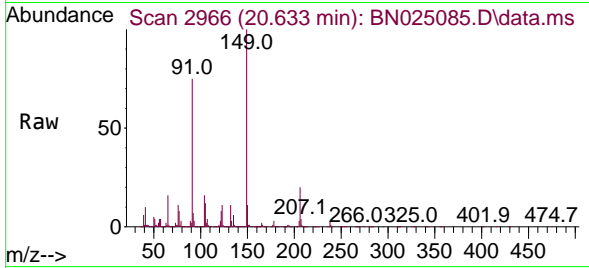
#83
 Butylbenzylphthalate
 Concen: 34.451 ng/ul
 RT: 20.633 min Scan# 2966
 Delta R.T. 0.000 min
 Lab File: BN025085.D
 Acq: 22 Apr 2023 20:30

Instrument :

BNA_N

ClientSampleId :

SLCS278

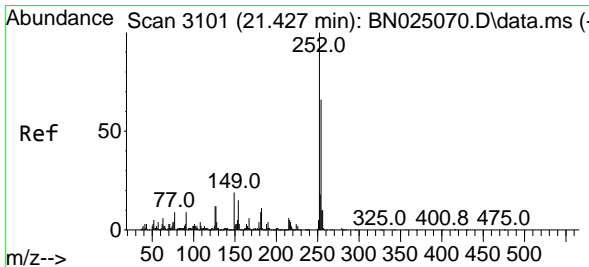
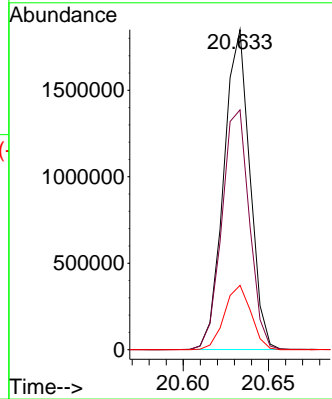
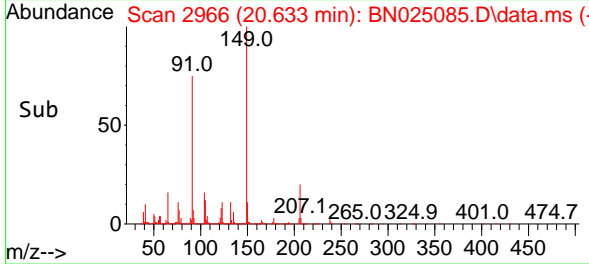


Tgt Ion:149 Resp: 1972862
 Ion Ratio Lower Upper
 149 100
 91 75.0 62.6 93.8
 206 20.1 16.2 24.2

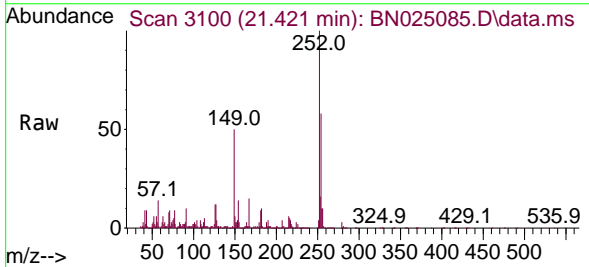
Manual Integrations

APPROVED

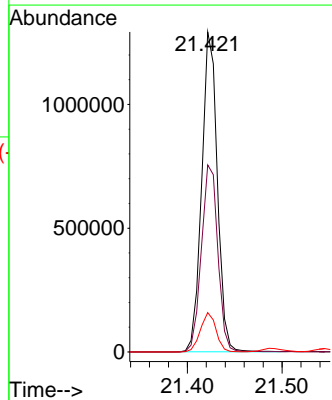
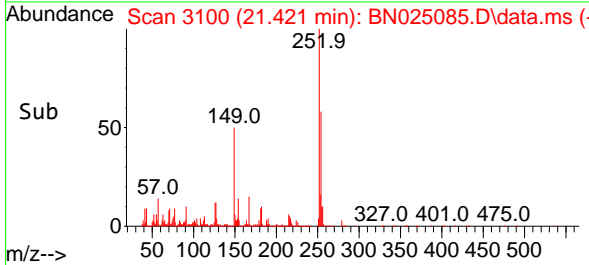
Reviewed By :Christian Giraldo 04/24/2023
 Supervised By :Jagrut Upadhyay 04/24/2023

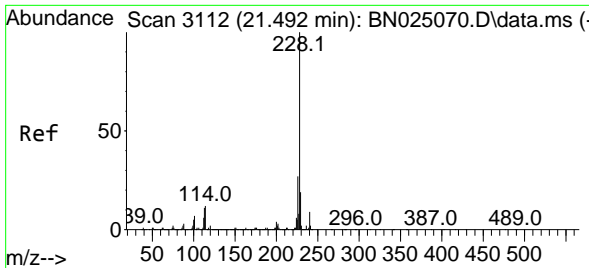


#84
 3,3'-Dichlorobenzidine
 Concen: 34.231 ng/ul
 RT: 21.421 min Scan# 3100
 Delta R.T. -0.006 min
 Lab File: BN025085.D
 Acq: 22 Apr 2023 20:30



Tgt Ion:252 Resp: 1478862
 Ion Ratio Lower Upper
 252 100
 254 58.5 52.2 78.2
 126 12.3 11.4 17.2





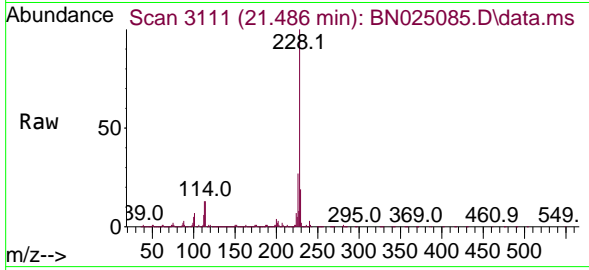
#85
 Benzo(a)anthracene
 Concen: 31.229 ng/u1
 RT: 21.486 min Scan# 3111
 Delta R.T. -0.006 min
 Lab File: BN025085.D
 Acq: 22 Apr 2023 20:30

Instrument :

BNA_N

ClientSampleId :

SLCS278

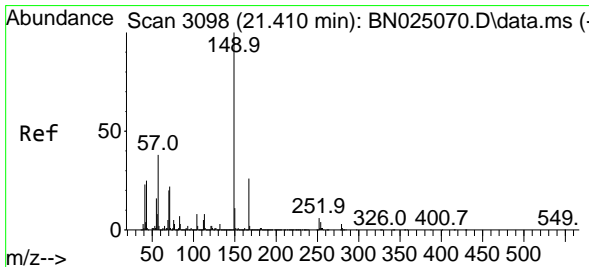
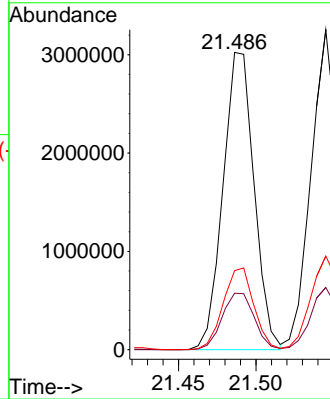
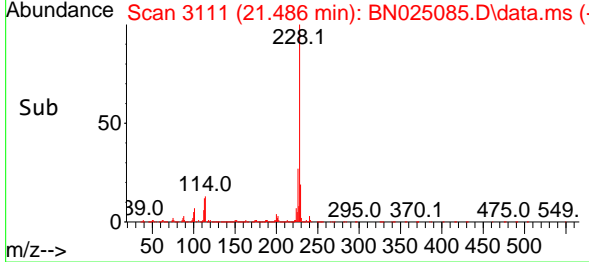


Tgt Ion:228 Resp: 422321
 Ion Ratio Lower Upper
 228 100
 229 19.0 16.2 24.2
 226 26.6 20.7 31.1

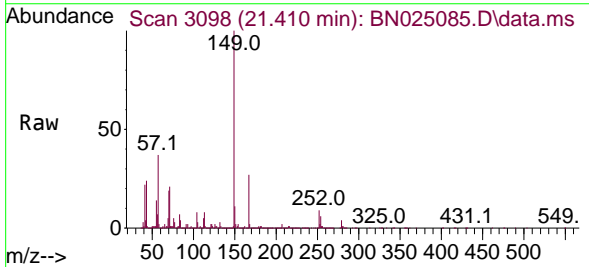
Manual Integrations

APPROVED

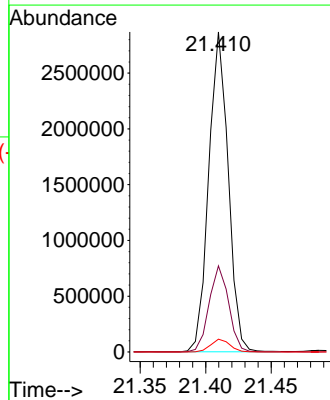
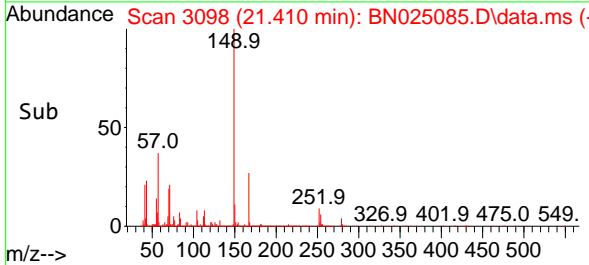
Reviewed By :Christian Giraldo 04/24/2023
 Supervised By :Jagrut Upadhyay 04/24/2023

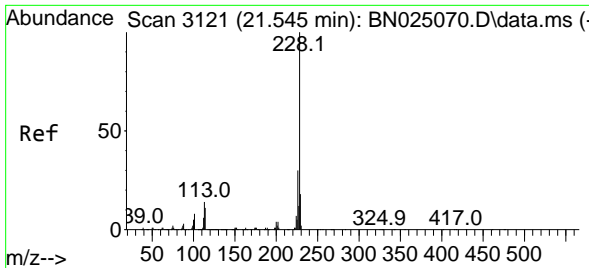


#86
 Bis(2-ethylhexyl)phthalate
 Concen: 34.637 ng/u1
 RT: 21.410 min Scan# 3098
 Delta R.T. 0.000 min
 Lab File: BN025085.D
 Acq: 22 Apr 2023 20:30



Tgt Ion:149 Resp: 2961046
 Ion Ratio Lower Upper
 149 100
 167 26.9 21.8 32.8
 279 4.0 2.9 4.3





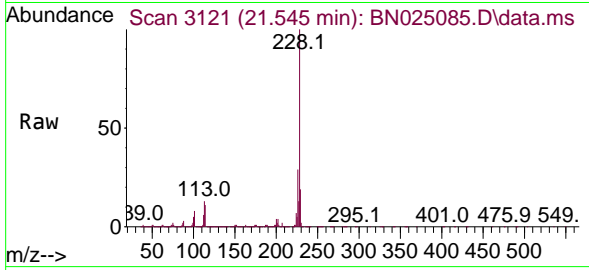
#87
 Chrysene
 Concen: 31.618 ng/u1
 RT: 21.545 min Scan# 3121
 Delta R.T. 0.000 min
 Lab File: BN025085.D
 Acq: 22 Apr 2023 20:30

Instrument :

BNA_N

ClientSampled :

SLCS278

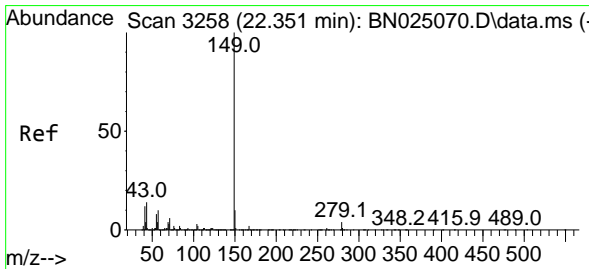
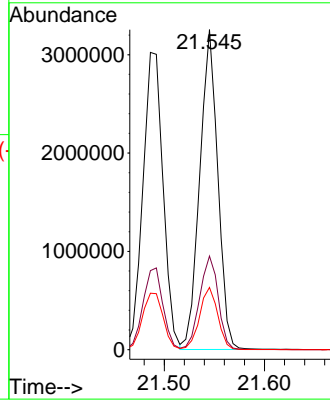
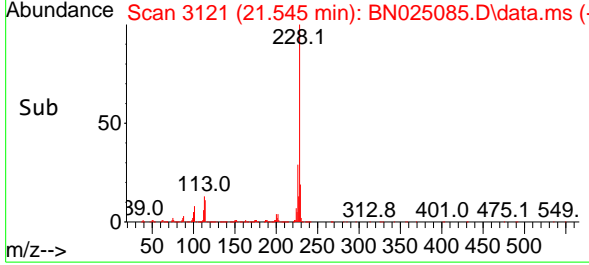


Tgt Ion:228 Resp: 4072680
 Ion Ratio Lower Upper
 228 100
 226 29.3 22.4 33.6
 229 19.4 15.6 23.4

Manual Integrations

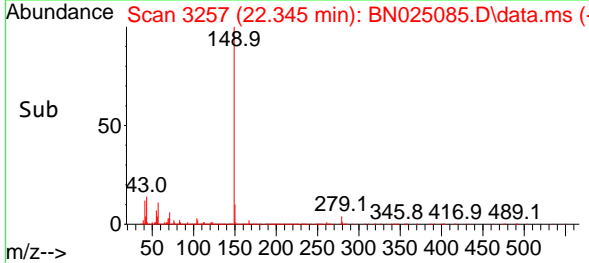
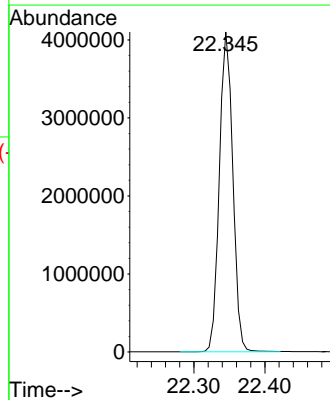
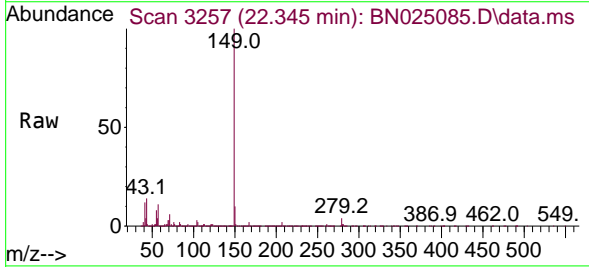
APPROVED

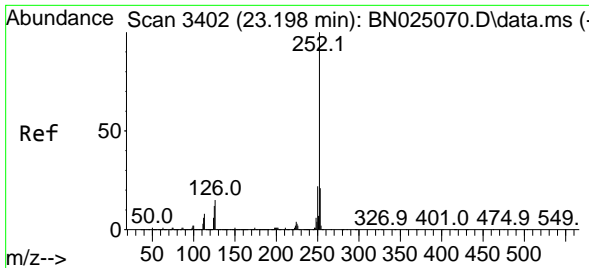
Reviewed By :Christian Giraldo 04/24/2023
 Supervised By :Jagrut Upadhyay 04/24/2023



#89
 Di-n-octyl phthalate
 Concen: 36.416 ng/u1
 RT: 22.345 min Scan# 3257
 Delta R.T. -0.006 min
 Lab File: BN025085.D
 Acq: 22 Apr 2023 20:30

Tgt Ion:149 Resp: 5369289





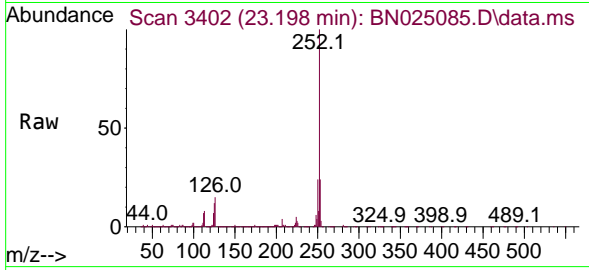
#90
 Benzo(b)fluoranthene
 Concen: 33.258 ng/u1
 RT: 23.198 min Scan# 3402
 Delta R.T. 0.000 min
 Lab File: BN025085.D
 Acq: 22 Apr 2023 20:30

Instrument :

BNA_N

ClientSampleId :

SLCS278

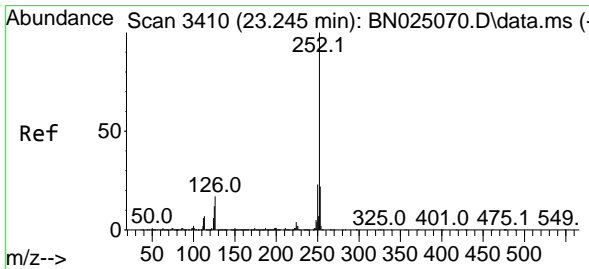
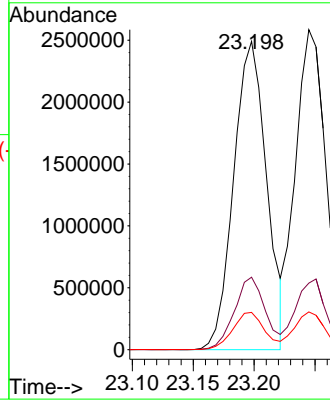
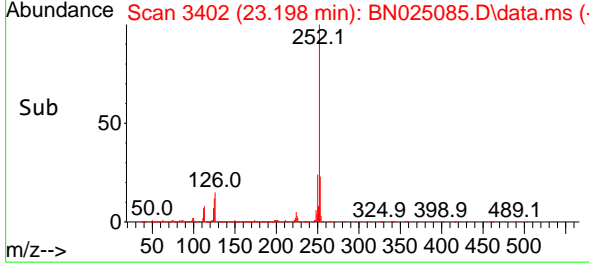


Tgt Ion:252 Resp: 467939
 Ion Ratio Lower Upper
 252 100
 253 23.5 19.2 28.8
 125 12.1 10.4 15.6

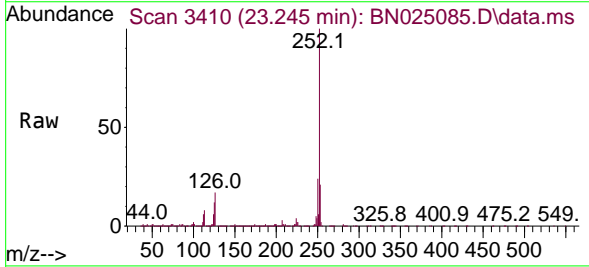
Manual Integrations

APPROVED

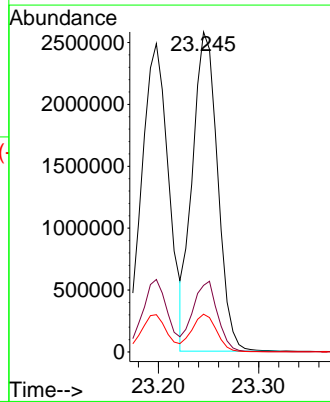
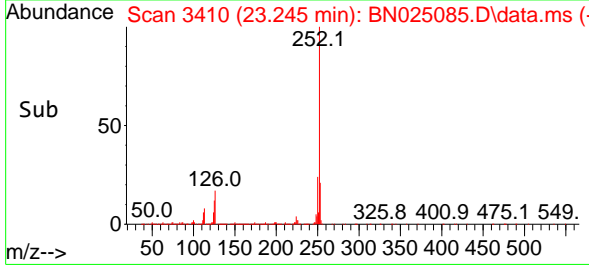
Reviewed By :Christian Giraldo 04/24/2023
 Supervised By :Jagrut Upadhyay 04/24/2023

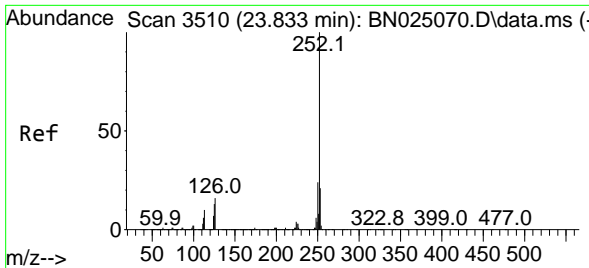


#91
 Benzo(k)fluoranthene
 Concen: 32.529 ng/u1
 RT: 23.245 min Scan# 3410
 Delta R.T. 0.000 min
 Lab File: BN025085.D
 Acq: 22 Apr 2023 20:30



Tgt Ion:252 Resp: 4503650
 Ion Ratio Lower Upper
 252 100
 253 20.8 16.7 25.1
 125 11.8 9.3 13.9





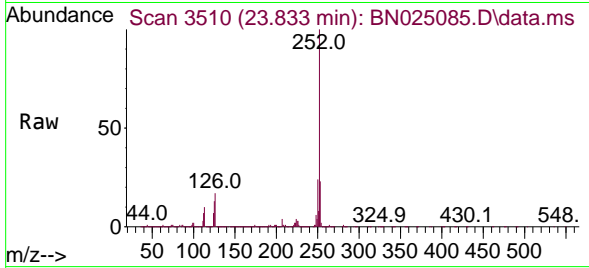
#93
 Benzo(a)pyrene
 Concen: 33.214 ng/u1
 RT: 23.833 min Scan# 3510
 Delta R.T. 0.000 min
 Lab File: BN025085.D
 Acq: 22 Apr 2023 20:30

Instrument :

BNA_N

ClientSampleId :

SLCS278

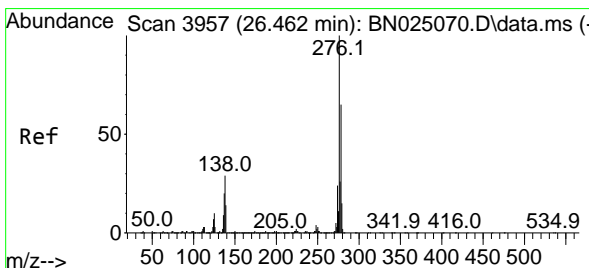
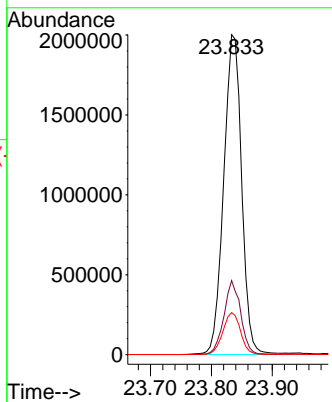
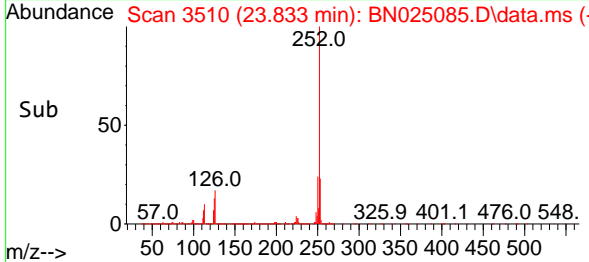


Tgt Ion:252 Resp: 4091529
 Ion Ratio Lower Upper
 252 100
 253 23.2 17.4 26.0
 125 13.2 10.8 16.2

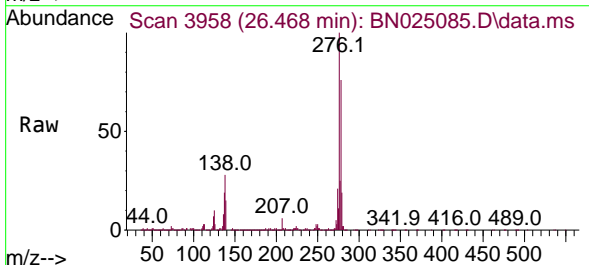
Manual Integrations

APPROVED

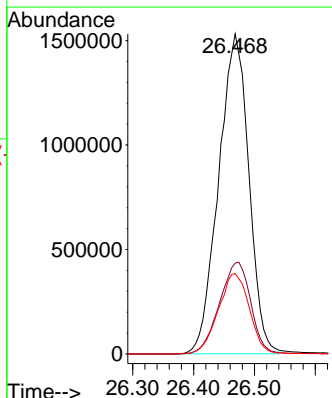
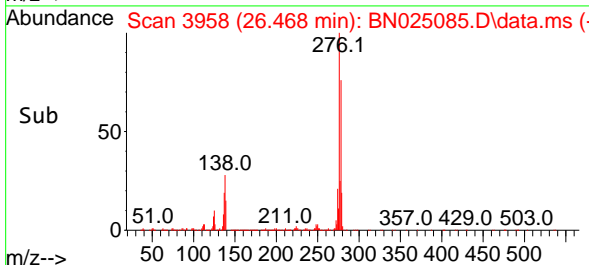
Reviewed By :Christian Giraldo 04/24/2023
 Supervised By :Jagrut Upadhyay 04/24/2023

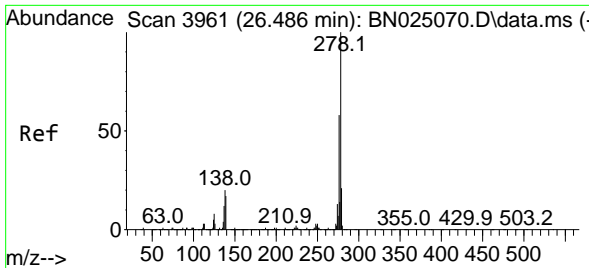


#94
 Indeno(1,2,3-cd)pyrene
 Concen: 35.355 ng/u1
 RT: 26.468 min Scan# 3958
 Delta R.T. 0.006 min
 Lab File: BN025085.D
 Acq: 22 Apr 2023 20:30



Tgt Ion:276 Resp: 5276921
 Ion Ratio Lower Upper
 276 100
 138 28.4 21.9 32.9
 277 25.1 19.8 29.6





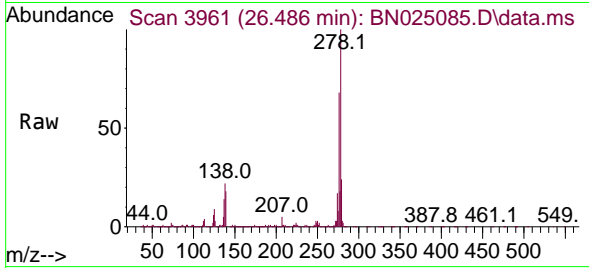
#95
 Dibenzo(a,h)anthracene
 Concen: 35.995 ng/ul
 RT: 26.486 min Scan# 3961
 Delta R.T. 0.000 min
 Lab File: BN025085.D
 Acq: 22 Apr 2023 20:30

Instrument :

BNA_N

ClientSampleId :

SLCS278

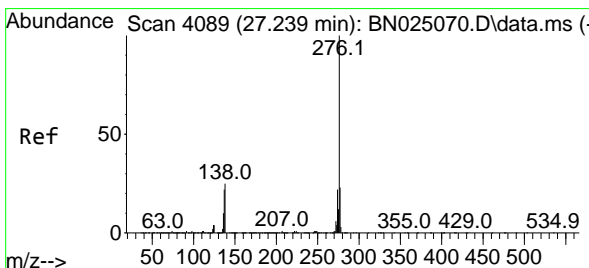
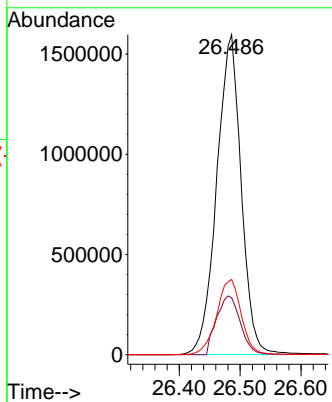
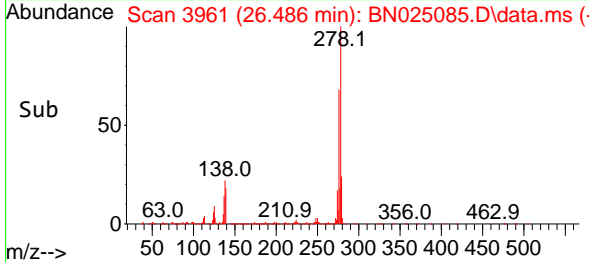


Tgt Ion:278 Resp: 443540
 Ion Ratio Lower Upper
 278 100
 139 17.8 14.6 21.8
 279 23.5 18.2 27.4

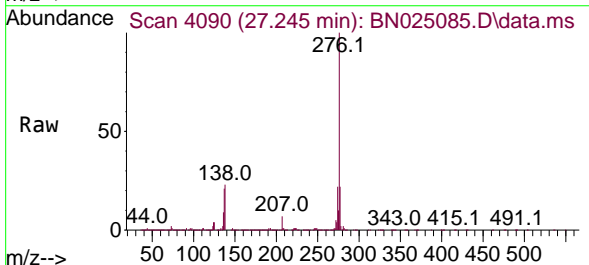
Manual Integrations

APPROVED

Reviewed By :Christian Giraldo 04/24/2023
 Supervised By :Jagrut Upadhyay 04/24/2023



#96
 Benzo(g,h,i)perylene
 Concen: 36.037 ng/ul
 RT: 27.245 min Scan# 4090
 Delta R.T. 0.006 min
 Lab File: BN025085.D
 Acq: 22 Apr 2023 20:30



Tgt Ion:276 Resp: 4364612
 Ion Ratio Lower Upper
 276 100
 138 23.4 19.8 29.8
 277 21.9 17.6 26.4

