

Data Path : Z:\svoasrv\HPCHEM1\BNA_N\Data\BN042223\
 Data File : BN025097.D
 Acq On : 23 Apr 2023 04:15
 Operator : CG/JU
 Sample : 02399-13
 Misc :
 ALS Vial : 29 Sample Multiplier: 1

Instrument :
 BNA_N
ClientSampleId :
 COMP1

Manual Integrations
APPROVED
 Reviewed By :Christian Giraldo 04/24/2023
 Supervised By :Jagrut Upadhyay 04/24/2023

Quant Time: Apr 23 04:47:27 2023
 Quant Method : Z:\svoasrv\HPCHEM1\BNA_N\Methods\SFAM-EPA-BN041023.M
 Quant Title : SVOA CALIBRATION
 QLast Update : Sun Apr 23 01:54:00 2023
 Response via : Initial Calibration

Compound	R.T.	QIon	Response	Conc	Units	Dev(Min)
Internal Standards						
1) 1,4-Dichlorobenzene-d4	7.916	152	289277	20.000	ng/ul	0.00
20) Naphthalene-d8	10.728	136	1303341	20.000	ng/ul	0.00
38) Acenaphthene-d10	14.563	164	865381	20.000	ng/ul	0.00
64) Phenanthrene-d10	17.310	188	1943149	20.000	ng/ul	0.00
79) Chrysene-d12	21.498	240	1948124	20.000	ng/ul	-0.01
88) Perylene-d12	23.945	264	2336367	20.000	ng/ul	0.00
System Monitoring Compounds						
3) 1,4-Dioxane-d8	3.293	96	28614	3.765	ng/uL	0.00
4) Pyridine-d5	3.728	84	148044	6.505	ng/ul	0.01
7) Phenol-d5	7.075	99	129973	4.609	ng/ul	0.00
9) Bis-(2-Chloroethyl)eth...	7.246	67	625682	33.169	ng/ul	0.00
11) 2-Chlorophenol-d4	7.446	132	475823	22.958	ng/ul	0.00
15) 4-Methylphenol-d8	8.628	113	287191	12.827	ng/ul	0.00
21) Nitrobenzene-d5	9.087	128	343494	32.550	ng/ul	0.00
24) 2-Nitrophenol-d4	9.810	143	364347	31.875	ng/ul	0.00
28) 2,4-Dichlorophenol-d3	10.346	165	572680	28.030	ng/ul	0.00
31) 4-Chloroaniline-d4	10.869	131	838965	27.059	ng/ul	0.00
46) Dimethylphthalate-d6	13.975	166	2443301	36.420	ng/ul	0.00
49) Acenaphthylene-d8	14.257	160	2609872	33.949	ng/ul	0.00
54) 4-Nitrophenol-d4	14.757	143	52342m	3.806	ng/ul	0.00
60) Fluorene-d10	15.557	176	2081540	36.749	ng/ul	0.00
65) 4,6-Dinitro-2-methylph...	15.675	200	347526	27.481	ng/ul	0.00
73) Anthracene-d10	17.410	188	3412200	37.389	ng/ul	0.00
81) Pyrene-d10	19.704	212	4165044	36.818	ng/ul	0.00
92) Benzo(a)pyrene-d12	23.786	264	4528276	37.068	ng/ul	0.00
Target Compounds						
35) 4-Chloro-3-methylphenol	12.016	107	103124	4.289	ng/ul	96

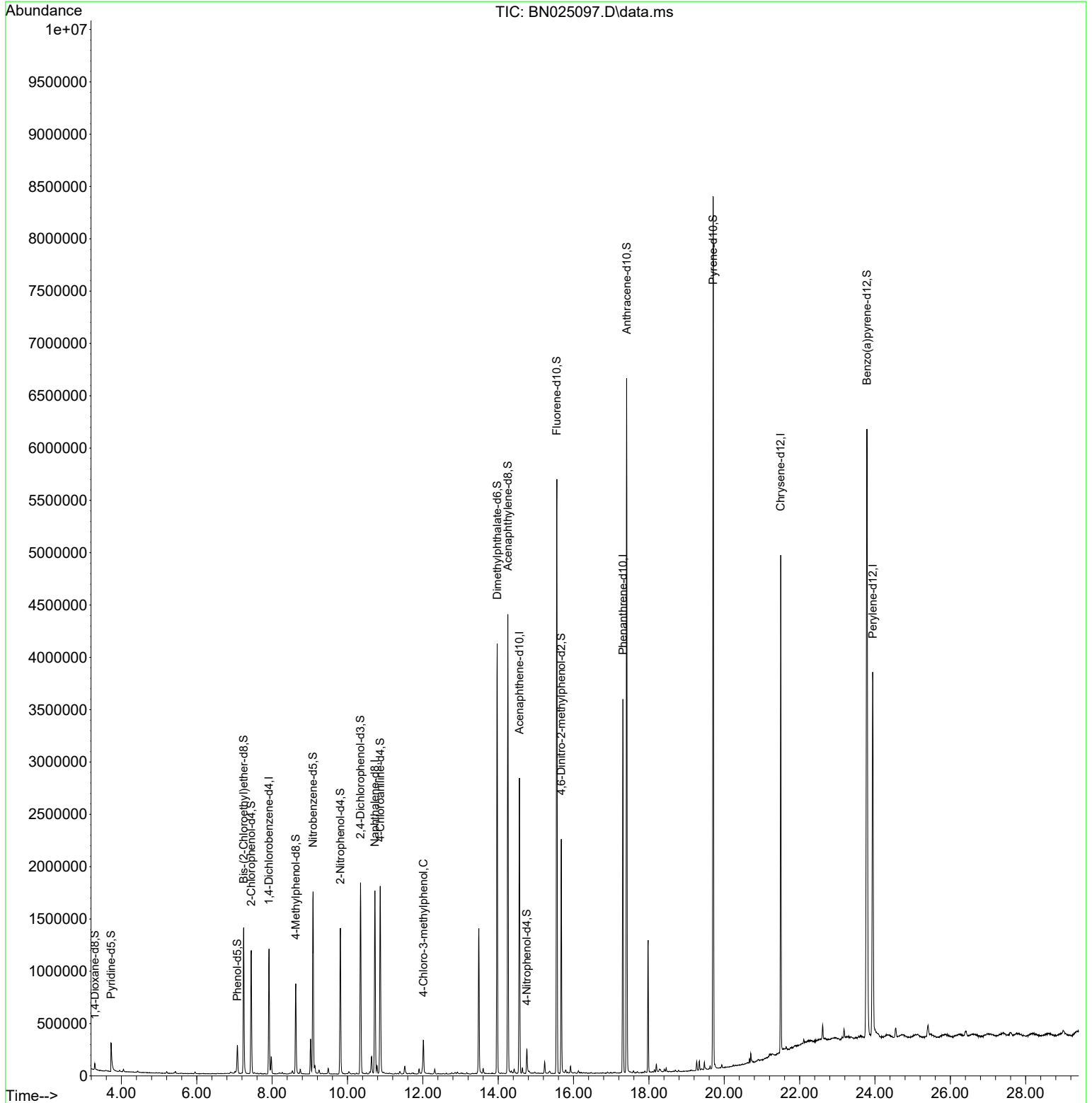
(#) = qualifier out of range (m) = manual integration (+) = signals summed

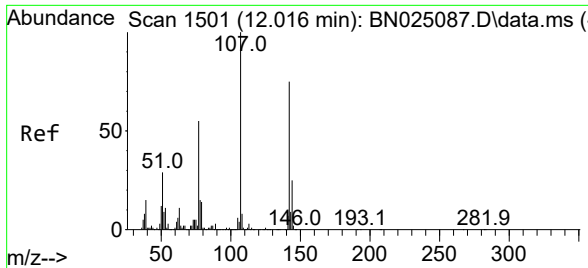
Data Path : Z:\svoasrv\HPCHEM1\BNA_N\Data\BN042223\
 Data File : BN025097.D
 Acq On : 23 Apr 2023 04:15
 Operator : CG/JU
 Sample : 02399-13
 Misc :
 ALS Vial : 29 Sample Multiplier: 1

Instrument :
 BNA_N
ClientSampleId :
 COMP1

Quant Time: Apr 23 04:47:27 2023
 Quant Method : Z:\svoasrv\HPCHEM1\BNA_N\Methods\SFAM-EPA-BN041023.M
 Quant Title : SVOA CALIBRATION
 QLast Update : Sun Apr 23 01:54:00 2023
 Response via : Initial Calibration

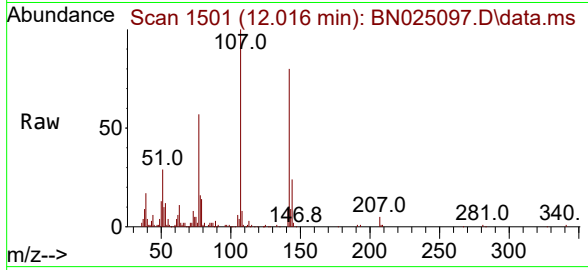
Manual Integrations
APPROVED
 Reviewed By :Christian Giraldo 04/24/2023
 Supervised By :Jagrut Upadhyay 04/24/2023





#35
 4-Chloro-3-methylphenol
 Concen: 4.289 ng/ul
 RT: 12.016 min Scan# 11
 Delta R.T. 0.000 min
 Lab File: BN025097.D
 Acq: 23 Apr 2023 04:15

Instrument :
 BNA_N
 ClientSampleId :
 COMP1



Tgt Ion:107 Resp: 103124

Ion	Ratio	Lower	Upper
107	100		
144	24.5	19.6	29.4
142	79.9	60.7	91.1

Manual Integrations
APPROVED
 Reviewed By :Christian Giraldo 04/24/2023
 Supervised By :Jagrut Upadhyay 04/24/2023

