

Data Path : Z:\svoasrv\HPCHEM1\BNA_N\Data\BN042223\
 Data File : BN025078.D
 Acq On : 22 Apr 2023 16:20
 Operator : CG/JU
 Sample : 02378-14
 Misc :
 ALS Vial : 10 Sample Multiplier: 1

Instrument :
 BNA_N
 ClientSampleId :
 COMK7

Integration Parameters: LSCINT.P

Integrator: RTE
 Smoothing : OFF Filtering: 5
 Sampling : 1 Min Area: 0.1 % of largest Peak
 Start Thrs: 0.2 Max Peaks: 100
 Stop Thrs : 0 Peak Location: TOP

If leading or trailing edge < 100 prefer < Baseline drop else tangent >
 Peak separation: 5

Method : Z:\svoasrv\HPCHEM1\BNA_N\Methods\SFAM-EPA-BN041023.M
 Title : SVOA CALIBRATION

Signal : TIC: BN025078.D\data.ms

peak #	R.T. min	first scan	max scan	last scan	PK TY	peak height	corr. area	corr. % max.	% of total
1	3.728	89	92	115	rBV	260664	556457	0.20%	0.052%
2	5.217	335	345	347	rBV3	45538024	93638528	34.10%	8.792%
3	6.587	567	578	587	rBV	428251	750482	0.27%	0.070%
4	7.081	655	662	678	rVB2	334807	677867	0.25%	0.064%
5	7.258	682	692	703	rBV	972767	1901683	0.69%	0.179%
6	7.452	715	725	739	rBV	1036543	1961682	0.71%	0.184%
7	7.828	777	789	800	rBV	30418010	82537783	30.06%	7.750%
8	8.028	800	823	828	rBV6	50483936	265091895	96.53%	24.891%
9	8.363	859	880	885	rBV5	51056658	274621099	100.00%	25.786%
10	8.634	920	926	934	rVB	916243	1429080	0.52%	0.134%
11	9.093	997	1004	1007	rBV	1429164	2495259	0.91%	0.234%
12	9.140	1007	1012	1021	rVB	8370770	13906842	5.06%	1.306%
13	9.428	1054	1061	1068	rBV	1704944	2775014	1.01%	0.261%
14	9.657	1093	1100	1103	rBV	462500	770738	0.28%	0.072%
15	9.699	1103	1107	1110	rVV	442953	823839	0.30%	0.077%
16	9.740	1110	1114	1120	rVV	930554	1655912	0.60%	0.155%
17	9.816	1120	1127	1133	rVV	1259457	2245647	0.82%	0.211%
18	9.869	1134	1136	1148	rVB	252388	383870	0.14%	0.036%
19	10.110	1170	1177	1187	rVB	154882	285075	0.10%	0.027%
20	10.357	1211	1219	1229	rBV	1446704	2632626	0.96%	0.247%
21	10.493	1235	1242	1252	rBV2	147567	374737	0.14%	0.035%
22	10.640	1252	1267	1268	rBV3	48432157	136359225	49.65%	12.803%
23	10.752	1279	1286	1292	rBV	1614735	2357618	0.86%	0.221%
24	10.881	1300	1308	1320	rVB	1158177	2018315	0.73%	0.190%
25	11.146	1340	1353	1358	rBV	34473561	73818860	26.88%	6.931%
26	11.340	1378	1386	1400	rBV	5736097	9188615	3.35%	0.863%
27	11.551	1410	1422	1433	rBV	1241489	2111767	0.77%	0.198%
28	12.028	1492	1503	1515	rVB3	279298	612341	0.22%	0.057%
29	12.722	1612	1621	1623	rBV3	633271	1219490	0.44%	0.115%
30	12.757	1623	1627	1634	rVV	2660217	4109766	1.50%	0.386%
31	12.993	1658	1667	1678	rBV3	189697	358189	0.13%	0.034%
32	13.369	1723	1731	1739	rBV	9263329	13961027	5.08%	1.311%
33	13.975	1823	1834	1840	rBV	3235722	4793027	1.75%	0.450%
34	14.257	1875	1882	1891	rVB	3435544	4896471	1.78%	0.460%
35	14.563	1927	1934	1948	rBV	2175684	3133715	1.14%	0.294%
36	14.757	1962	1967	1981	rVB2	323187	551277	0.20%	0.052%

Data Path : Z:\svoasrv\HPCHEM1\BNA_N\Data\BN042223\
 Data File : BN025078.D
 Acq On : 22 Apr 2023 16:20
 Operator : CG/JU
 Sample : 02378-14
 Misc :
 ALS Vial : 10 Sample Multiplier: 1

Instrument :
 BNA_N
 ClientSampleId :
 COMK7

Integration Parameters: LSCINT.P

Integrator: RTE
 Smoothing : OFF Filtering: 5
 Sampling : 1 Min Area: 0.1 % of largest Peak
 Start Thrs: 0.2 Max Peaks: 100
 Stop Thrs : 0 Peak Location: TOP

If leading or trailing edge < 100 prefer < Baseline drop else tangent >
 Peak separation: 5

Method : Z:\svoasrv\HPCHEM1\BNA_N\Methods\SFAM-EPA-BN041023.M
 Title : SVOA CALIBRATION

37	14.881	1982	1988	1995	rVB	433373	623298	0.23%	0.059%
38	15.051	2011	2017	2028	rBV	204644	377227	0.14%	0.035%
39	15.557	2096	2103	2109	rBV	4095511	5816083	2.12%	0.546%
40	15.675	2117	2123	2134	rVV	1750838	2273940	0.83%	0.214%
41	15.922	2160	2165	2178	rVB	938172	1221669	0.44%	0.115%
42	17.310	2394	2401	2412	rBV	2561190	3671533	1.34%	0.345%
43	17.410	2412	2418	2428	rBV	4636305	6554756	2.39%	0.615%
44	18.198	2547	2552	2562	rBV	226544	327255	0.12%	0.031%
45	18.686	2625	2635	2642	rBV	3974432	5369075	1.96%	0.504%
46	18.810	2652	2656	2666	rVB3	206027	316960	0.12%	0.030%
47	19.016	2687	2691	2695	rVV	287875	441852	0.16%	0.041%
48	19.475	2765	2769	2775	rBV	211648	286346	0.10%	0.027%
49	19.704	2802	2808	2815	rBV	5879669	8020882	2.92%	0.753%
50	21.204	3059	3063	3071	rBV2	192104	364061	0.13%	0.034%
51	21.504	3108	3114	3119	rBV	3300215	4321290	1.57%	0.406%
52	23.786	3495	3502	3519	rVV2	4685370	9294842	3.38%	0.873%
53	23.945	3521	3529	3541	rVB2	2157292	4731092	1.72%	0.444%

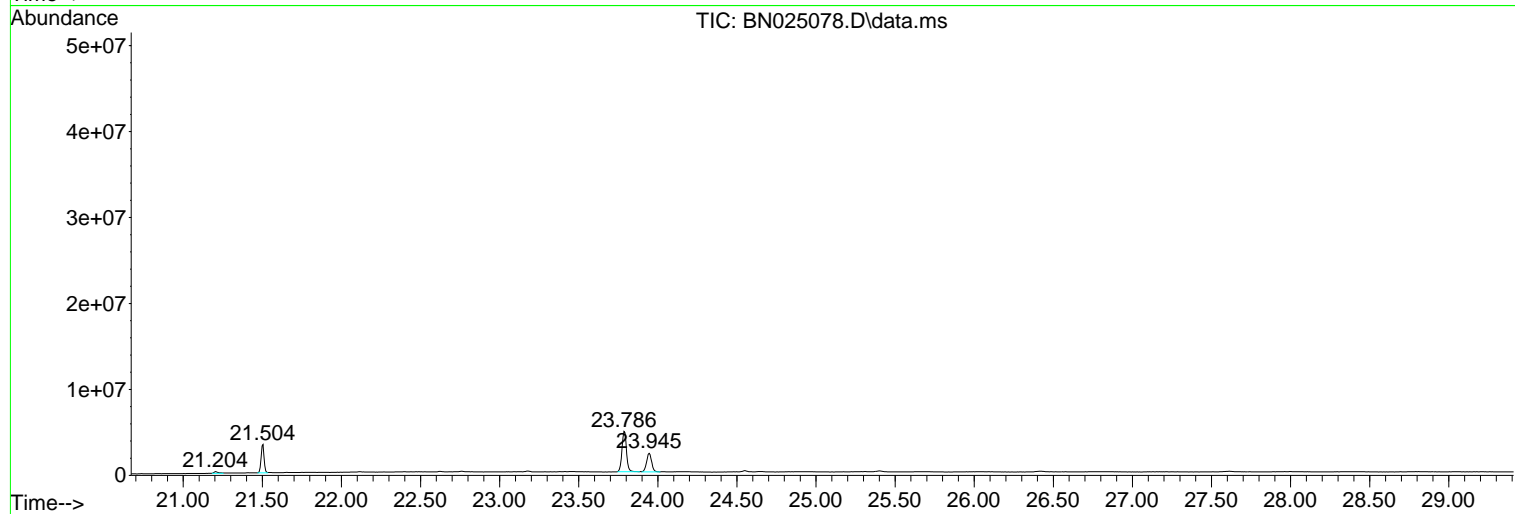
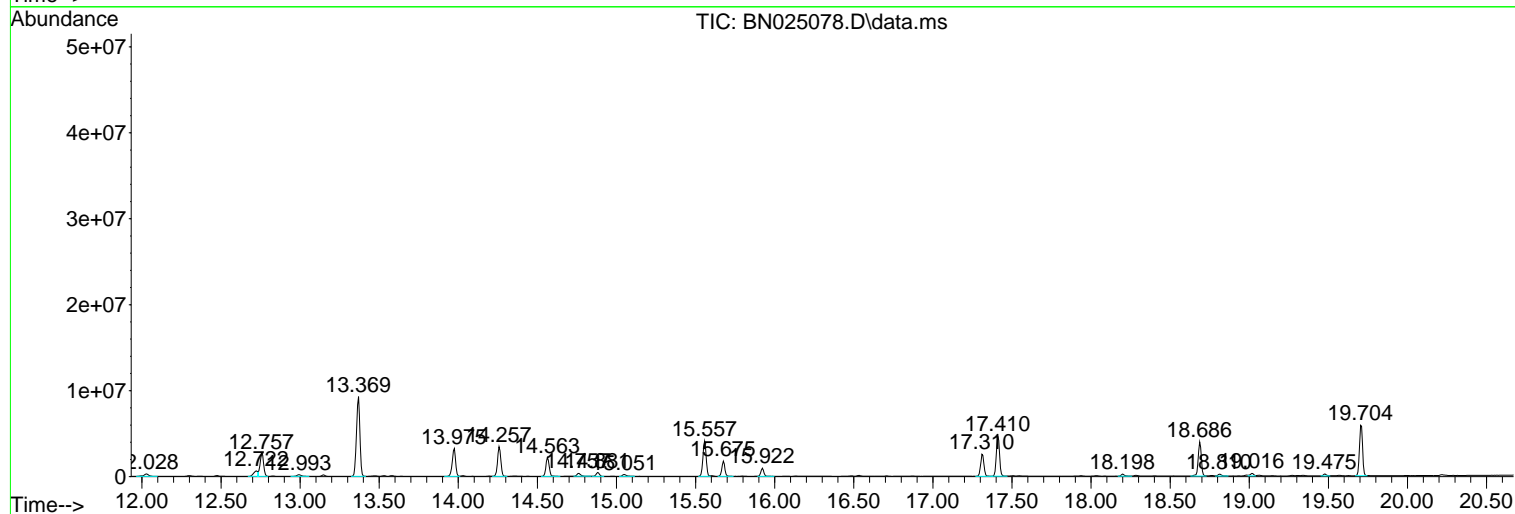
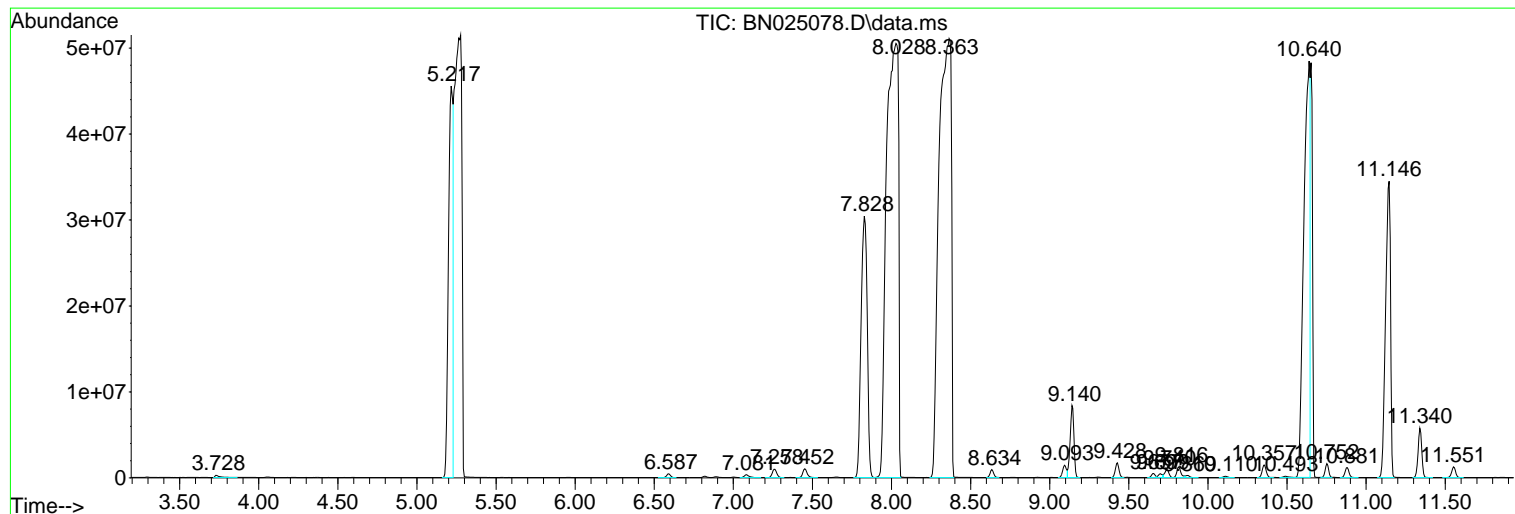
Sum of corrected areas: 1065017979

Data Path : Z:\svoasrv\HPCHEM1\BNA_N\Data\BN042223\
 Data File : BN025078.D
 Acq On : 22 Apr 2023 16:20
 Operator : CG/JU
 Sample : 02378-14
 Misc :
 ALS Vial : 10 Sample Multiplier: 1

Instrument :
 BNA_N
ClientSampleId :
 COMK7

Quant Method : Z:\svoasrv\HPCHEM1\BNA_N\Methods\SFAM-EPA-BN041023.M
 Quant Title : SVOA CALIBRATION

TIC Library : C:\Database\NIST20.L
 TIC Integration Parameters: LSCINT.P



Data Path : Z:\svoasrv\HPCHEM1\BNA_N\Data\BN042223\
 Data File : BN025078.D
 Acq On : 22 Apr 2023 16:20
 Operator : CG/JU
 Sample : 02378-14
 Misc :
 ALS Vial : 10 Sample Multiplier: 1

Instrument :
 BNA_N
 ClientSampleId :
 COMK7

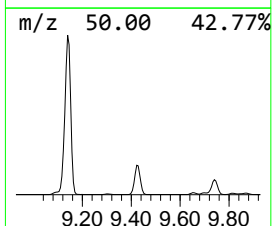
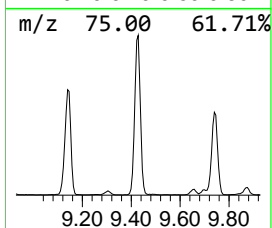
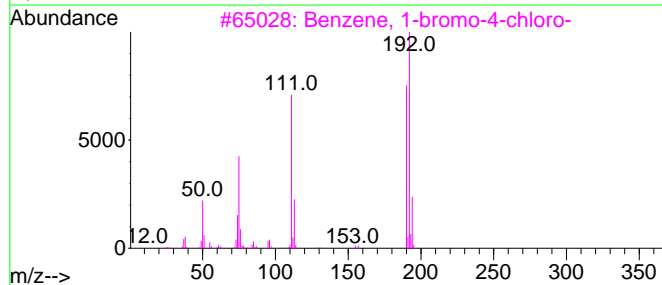
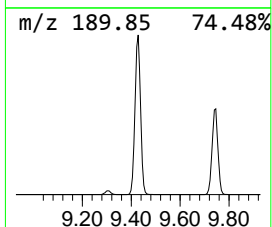
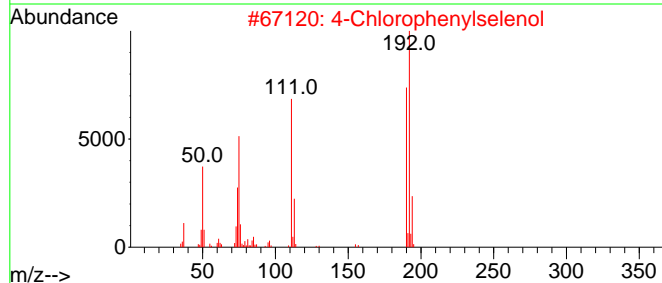
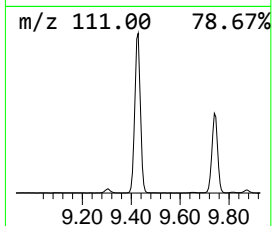
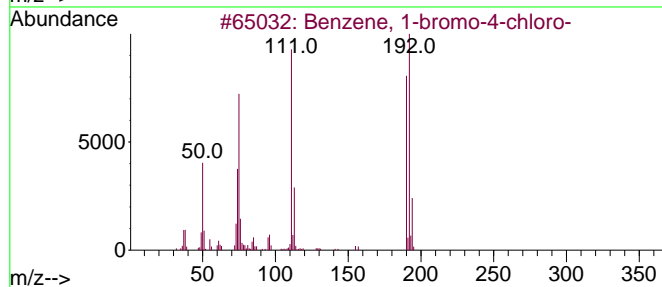
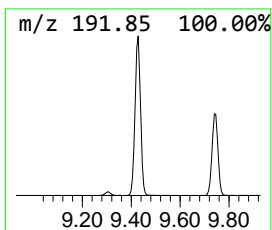
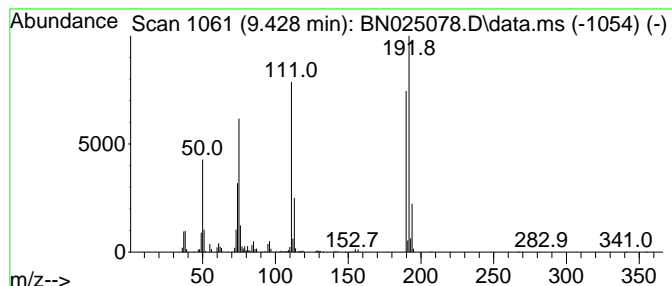
Quant Method : Z:\svoasrv\HPCHEM1\BNA_N\Methods\SFAM-EPA-BN041023.M
 Quant Title : SVOA CALIBRATION

TIC Library : C:\Database\NIST20.L
 TIC Integration Parameters: LSCINT.P

 Peak Number 5 Benzene, 1-bromo-4-chloro- Concentration Rank 6

R.T.	EstConc	Area	Relative to ISTD	R.T.
9.428	23.54 ng/ul	2775010	Naphthalene-d8	10.752

Hit#	of	5	Tentative ID	MW	MolForm	CAS#	Qual
1			Benzene, 1-bromo-4-chloro-	190	C6H4BrCl	000106-39-8	99
2			4-Chlorophenylselenol	192	C6H5ClSe	016645-10-6	99
3			Benzene, 1-bromo-4-chloro-	190	C6H4BrCl	000106-39-8	98
4			Benzene, 1-bromo-3-chloro-	190	C6H4BrCl	000108-37-2	97
5			Benzene, 1-bromo-2-chloro-	190	C6H4BrCl	000694-80-4	97



Data Path : Z:\svoasrv\HPCHEM1\BNA_N\Data\BN042223\
 Data File : BN025078.D
 Acq On : 22 Apr 2023 16:20
 Operator : CG/JU
 Sample : 02378-14
 Misc :
 ALS Vial : 10 Sample Multiplier: 1

Instrument :
 BNA_N
 ClientSampleId :
 COMK7

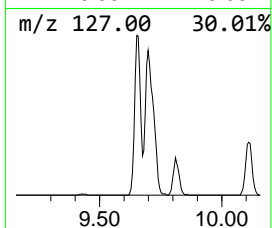
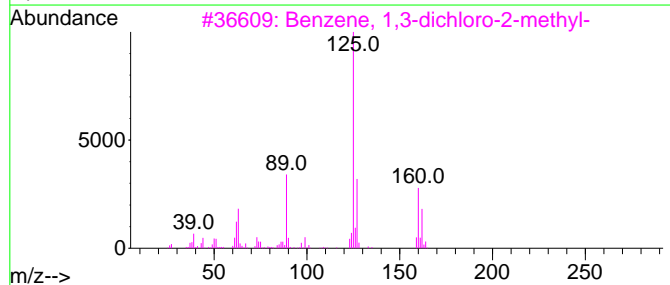
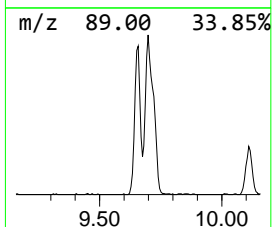
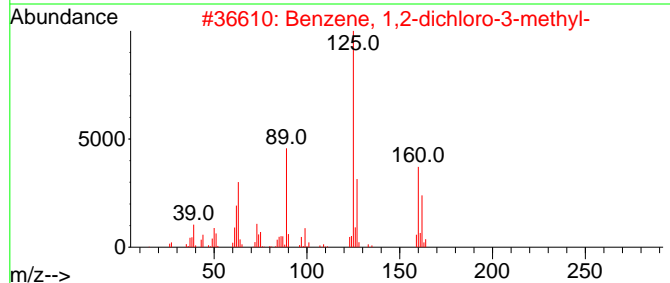
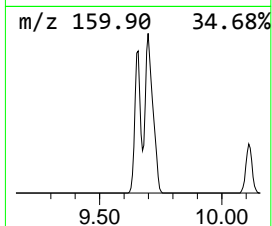
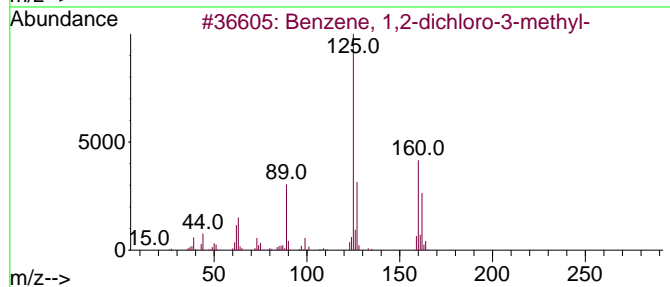
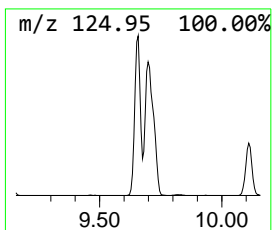
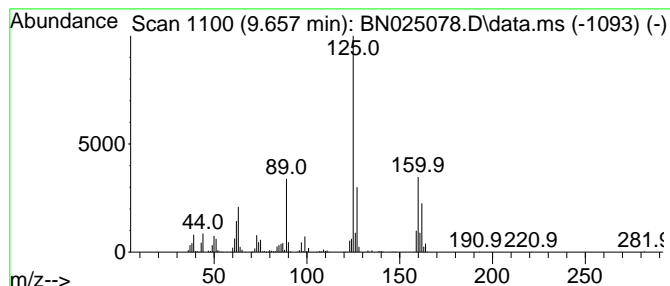
Quant Method : Z:\svoasrv\HPCHEM1\BNA_N\Methods\SFAM-EPA-BN041023.M
 Quant Title : SVOA CALIBRATION

TIC Library : C:\Database\NIST20.L
 TIC Integration Parameters: LSCINT.P

 Peak Number 6 Benzene, 1,2-dichloro-3-met... Concentration Rank 14

R.T.	EstConc	Area	Relative to ISTD	R.T.
9.657	6.54 ng/ul	770738	Naphthalene-d8	10.752

Hit#	of	5	Tentative ID	MW	MolForm	CAS#	Qual
1			Benzene, 1,2-dichloro-3-methyl-	160	C7H6Cl2	032768-54-0	98
2			Benzene, 1,2-dichloro-3-methyl-	160	C7H6Cl2	032768-54-0	97
3			Benzene, 1,3-dichloro-2-methyl-	160	C7H6Cl2	000118-69-4	97
4			Benzene, 1,2-dichloro-4-methyl-	160	C7H6Cl2	000095-75-0	97
5			Benzene, 2,4-dichloro-1-methyl-	160	C7H6Cl2	000095-73-8	96



Data Path : Z:\svoasrv\HPCHEM1\BNA_N\Data\BN042223\
 Data File : BN025078.D
 Acq On : 22 Apr 2023 16:20
 Operator : CG/JU
 Sample : 02378-14
 Misc :
 ALS Vial : 10 Sample Multiplier: 1

Instrument :
 BNA_N
 ClientSampleId :
 COMK7

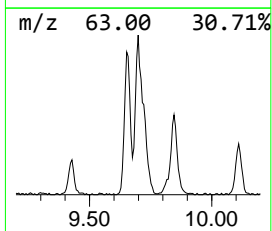
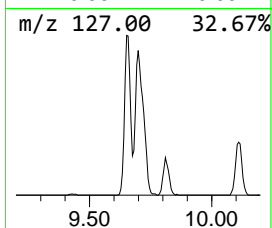
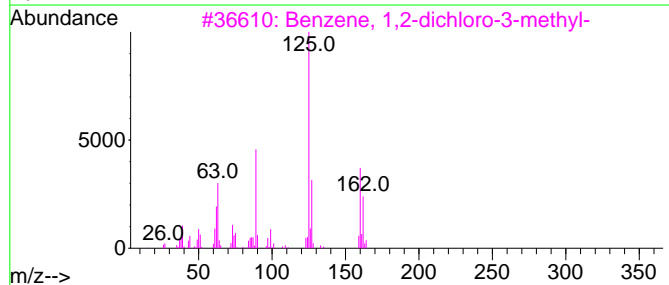
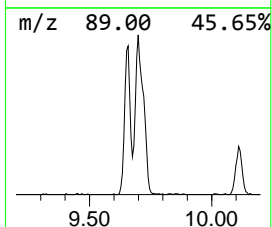
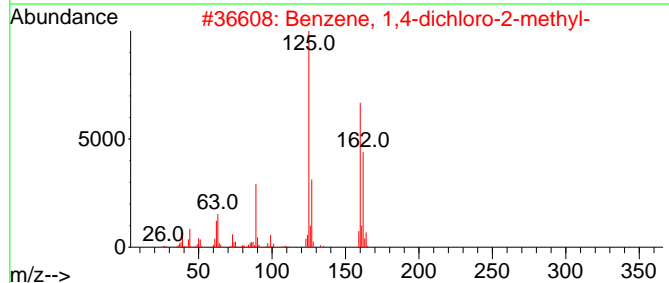
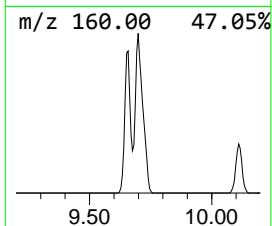
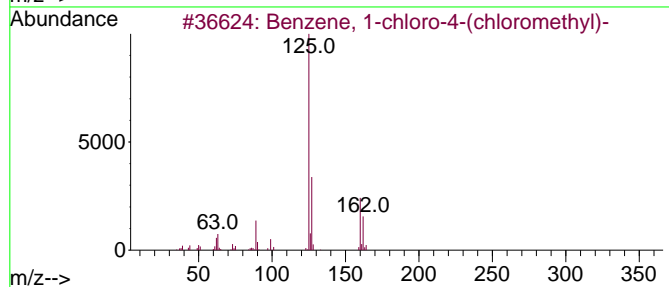
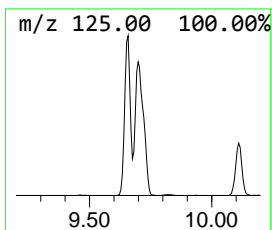
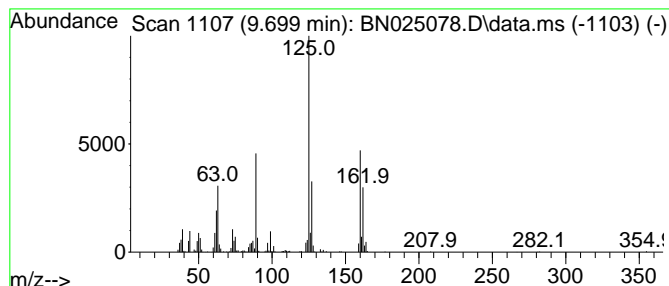
Quant Method : Z:\svoasrv\HPCHEM1\BNA_N\Methods\SFAM-EPA-BN041023.M
 Quant Title : SVOA CALIBRATION

TIC Library : C:\Database\NIST20.L
 TIC Integration Parameters: LSCINT.P

 Peak Number 7 Benzene, 1-chloro-4-(chloro... Concentration Rank 13

R.T.	EstConc	Area	Relative to ISTD	R.T.
9.699	6.99 ng/ul	823839	Naphthalene-d8	10.752

Hit#	of	5	Tentative ID	MW	MolForm	CAS#	Qual
1			Benzene, 1-chloro-4-(chloromethyl)-	160	C7H6Cl2	000104-83-6	95
2			Benzene, 1,4-dichloro-2-methyl-	160	C7H6Cl2	019398-61-9	95
3			Benzene, 1,2-dichloro-3-methyl-	160	C7H6Cl2	032768-54-0	95
4			Benzene, 1,4-dichloro-2-methyl-	160	C7H6Cl2	019398-61-9	94
5			Benzene, 1,3-dichloro-2-methyl-	160	C7H6Cl2	000118-69-4	94



Data Path : Z:\svoasrv\HPCHEM1\BNA_N\Data\BN042223\
 Data File : BN025078.D
 Acq On : 22 Apr 2023 16:20
 Operator : CG/JU
 Sample : 02378-14
 Misc :
 ALS Vial : 10 Sample Multiplier: 1

Instrument :
 BNA_N
 ClientSampleId :
 COMK7

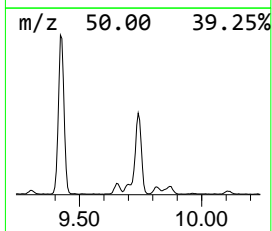
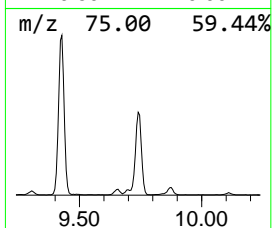
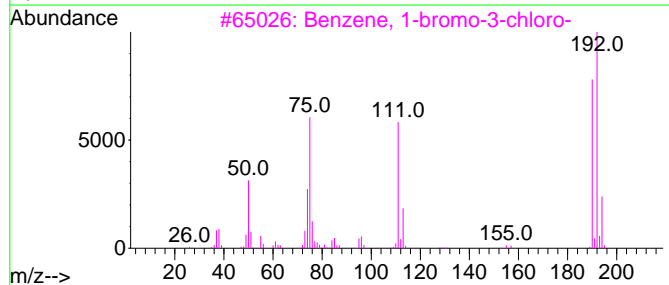
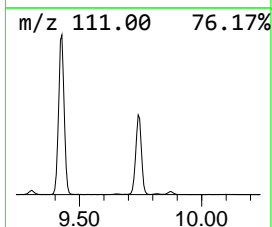
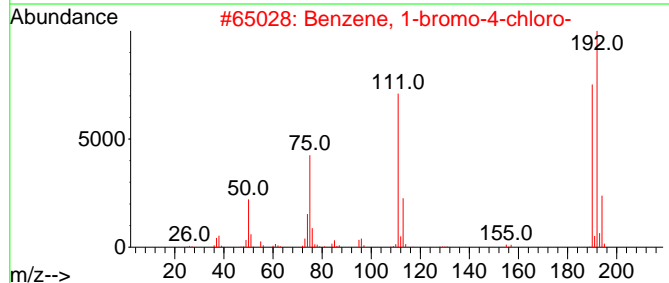
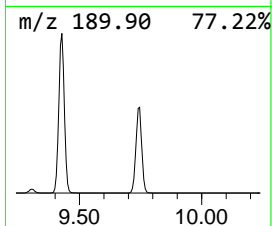
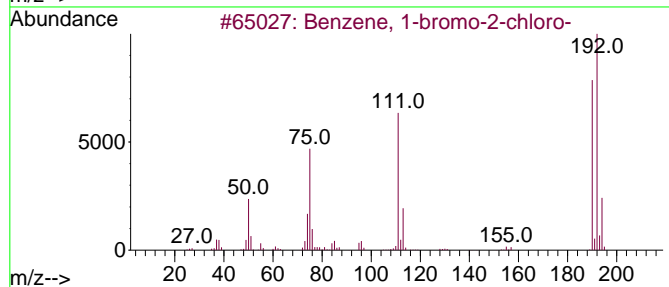
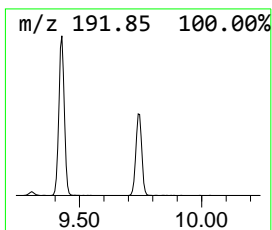
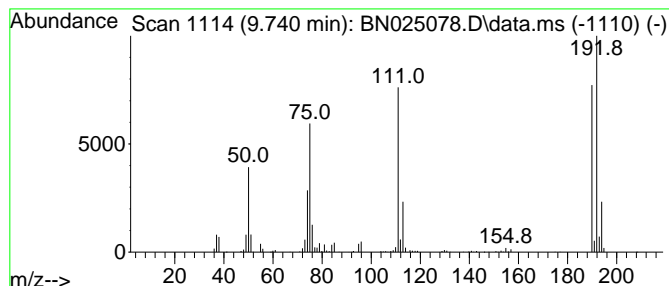
Quant Method : Z:\svoasrv\HPCHEM1\BNA_N\Methods\SFAM-EPA-BN041023.M
 Quant Title : SVOA CALIBRATION

TIC Library : C:\Database\NIST20.L
 TIC Integration Parameters: LSCINT.P

 Peak Number 8 Benzene, 1-bromo-2-chloro- Concentration Rank 10

R.T.	EstConc	Area	Relative to ISTD	R.T.
9.740	14.05 ng/ul	1655910	Naphthalene-d8	10.752

Hit#	of 5	Tentative ID	MW	MolForm	CAS#	Qual
1		Benzene, 1-bromo-2-chloro-	190	C6H4BrCl	000694-80-4	98
2		Benzene, 1-bromo-4-chloro-	190	C6H4BrCl	000106-39-8	98
3		Benzene, 1-bromo-3-chloro-	190	C6H4BrCl	000108-37-2	98
4		Benzene, 1-bromo-3-chloro-	190	C6H4BrCl	000108-37-2	97
5		Benzene, 1-bromo-4-chloro-	190	C6H4BrCl	000106-39-8	96



Data Path : Z:\svoasrv\HPCHEM1\BNA_N\Data\BN042223\
 Data File : BN025078.D
 Acq On : 22 Apr 2023 16:20
 Operator : CG/JU
 Sample : 02378-14
 Misc :
 ALS Vial : 10 Sample Multiplier: 1

Instrument :
 BNA_N
 ClientSampleId :
 COMK7

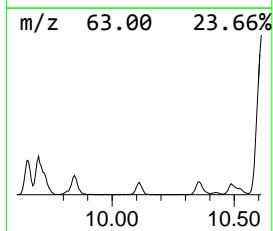
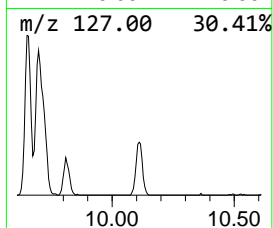
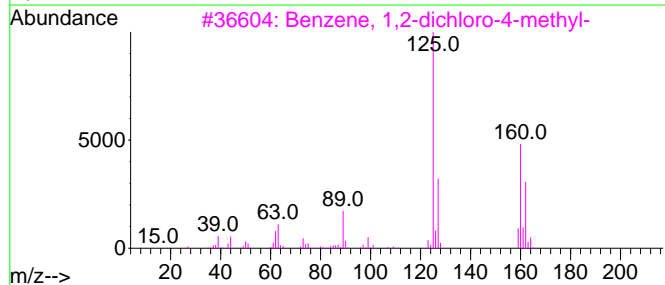
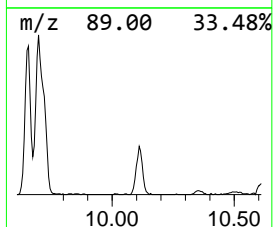
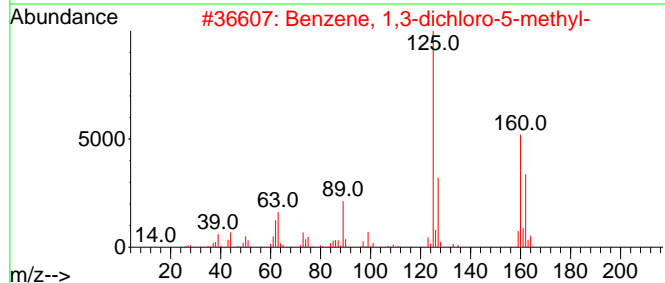
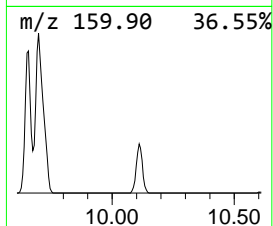
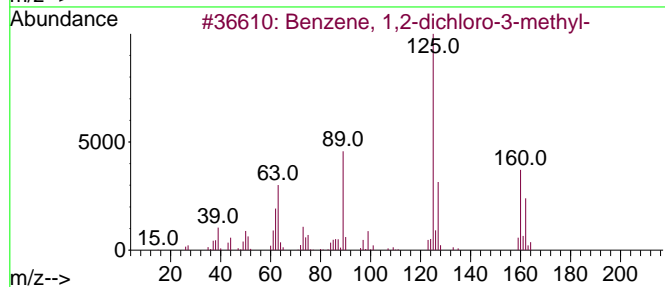
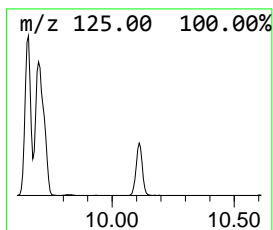
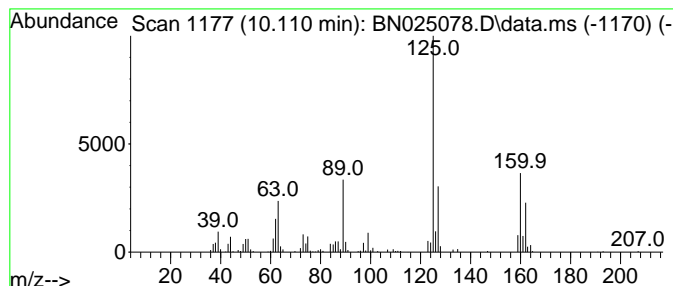
Quant Method : Z:\svoasrv\HPCHEM1\BNA_N\Methods\SFAM-EPA-BN041023.M
 Quant Title : SVOA CALIBRATION

TIC Library : C:\Database\NIST20.L
 TIC Integration Parameters: LSCINT.P

 Peak Number 9 Benzene, 1,3-dichloro-5-met... Concentration Rank 19

R.T.	EstConc	Area	Relative to ISTD	R.T.
10.110	2.42 ng/ul	285075	Naphthalene-d8	10.752

Hit#	of	5	Tentative ID	MW	MolForm	CAS#	Qual
1			Benzene, 1,2-dichloro-3-methyl-	160	C7H6Cl2	032768-54-0	98
2			Benzene, 1,3-dichloro-5-methyl-	160	C7H6Cl2	025186-47-4	97
3			Benzene, 1,2-dichloro-4-methyl-	160	C7H6Cl2	000095-75-0	96
4			Benzene, 1,2-dichloro-4-methyl-	160	C7H6Cl2	000095-75-0	96
5			Benzene, 1,2-dichloro-3-methyl-	160	C7H6Cl2	032768-54-0	96



Data Path : Z:\svoasrv\HPCHEM1\BNA_N\Data\BN042223\
 Data File : BN025078.D
 Acq On : 22 Apr 2023 16:20
 Operator : CG/JU
 Sample : 02378-14
 Misc :
 ALS Vial : 10 Sample Multiplier: 1

Instrument :
 BNA_N
 ClientSampleId :
 COMK7

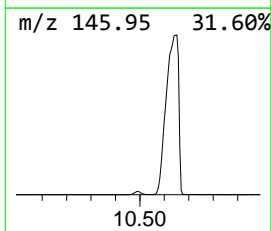
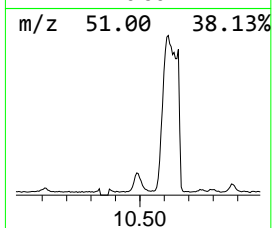
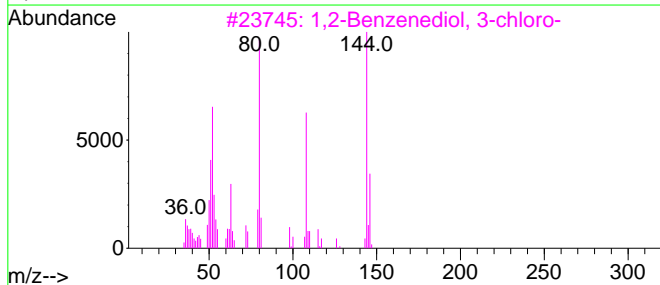
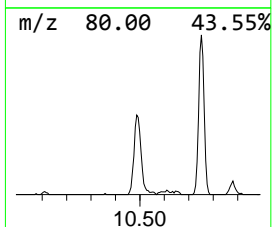
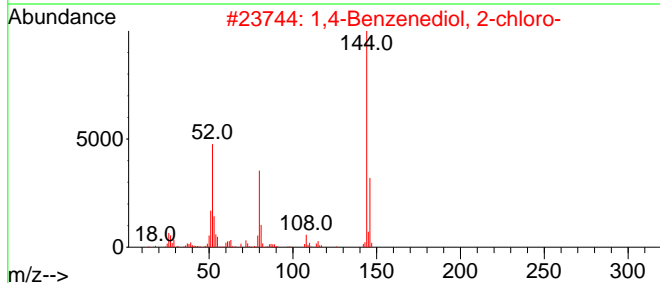
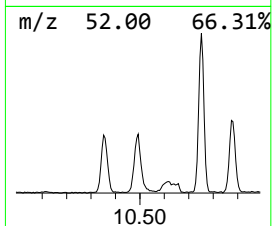
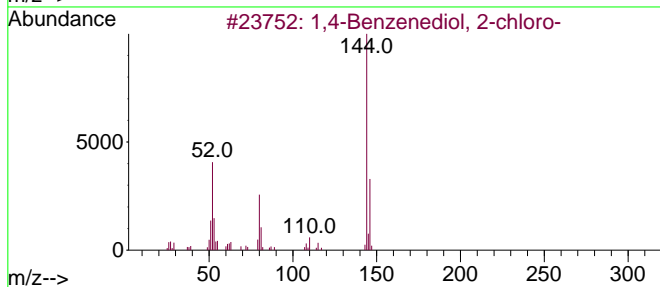
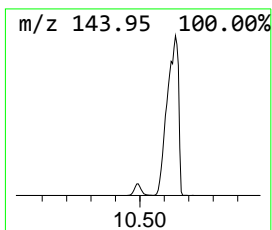
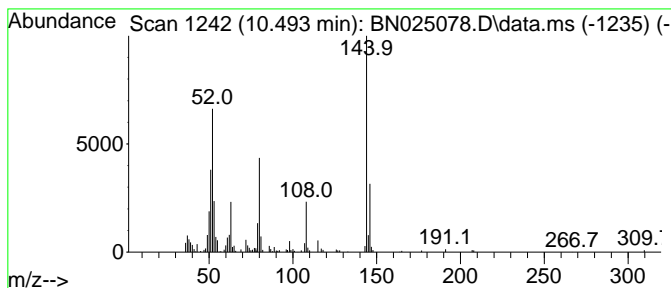
Quant Method : Z:\svoasrv\HPCHEM1\BNA_N\Methods\SFAM-EPA-BN041023.M
 Quant Title : SVOA CALIBRATION

TIC Library : C:\Database\NIST20.L
 TIC Integration Parameters: LSCINT.P

 Peak Number 10 1,4-Benzenediol, 2-chloro- Concentration Rank 18

R.T.	EstConc	Area	Relative to ISTD	R.T.
10.493	3.18 ng/ul	374737	Naphthalene-d8	10.752

Hit#	of 5	Tentative ID	MW	MolForm	CAS#	Qual
1		1,4-Benzenediol, 2-chloro-	144	C6H5ClO2	000615-67-8	87
2		1,4-Benzenediol, 2-chloro-	144	C6H5ClO2	000615-67-8	83
3		1,2-Benzenediol, 3-chloro-	144	C6H5ClO2	004018-65-9	83
4		1,4-Benzenediol, 2-chloro-	144	C6H5ClO2	000615-67-8	81
5		1,4-Benzenediol, 2-chloro-	144	C6H5ClO2	000615-67-8	80



Data Path : Z:\svoasrv\HPCHEM1\BNA_N\Data\BN042223\
 Data File : BN025078.D
 Acq On : 22 Apr 2023 16:20
 Operator : CG/JU
 Sample : 02378-14
 Misc :
 ALS Vial : 10 Sample Multiplier: 1

Instrument :
 BNA_N
 ClientSampleId :
 COMK7

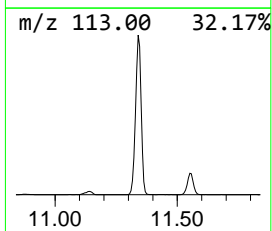
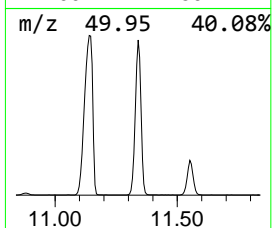
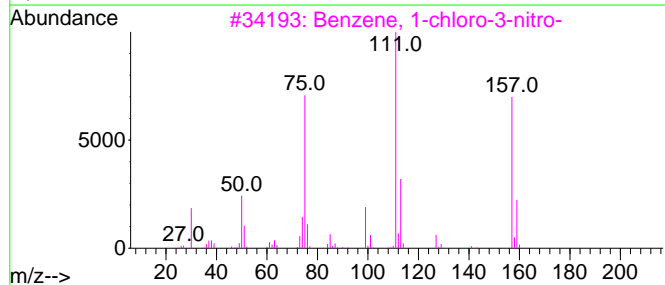
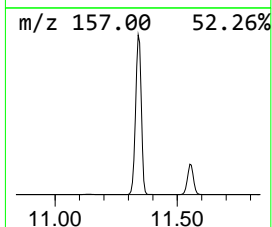
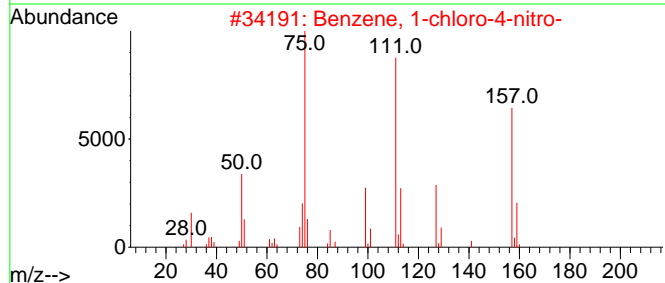
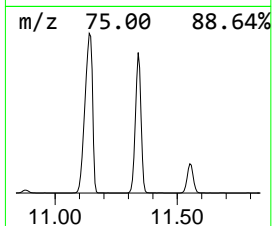
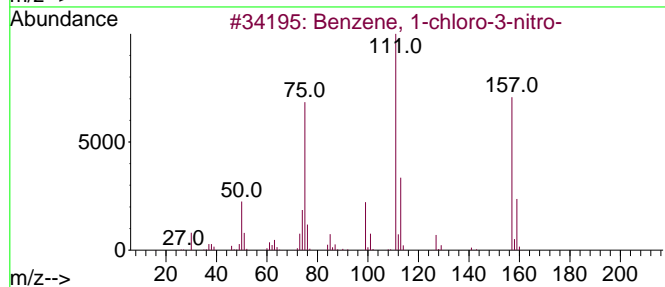
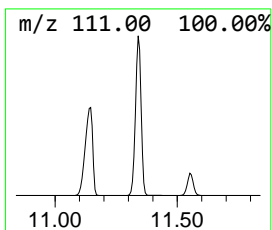
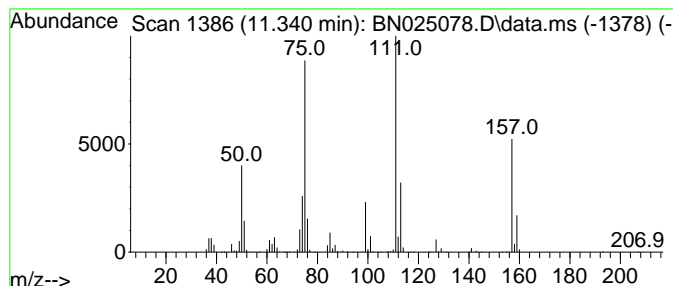
Quant Method : Z:\svoasrv\HPCHEM1\BNA_N\Methods\SFAM-EPA-BN041023.M
 Quant Title : SVOA CALIBRATION

TIC Library : C:\Database\NIST20.L
 TIC Integration Parameters: LSCINT.P

 Peak Number 13 Benzene, 1-chloro-3-nitro- Concentration Rank 4

R.T.	EstConc	Area	Relative to ISTD	R.T.
11.340	77.95 ng/ul	9188620	Naphthalene-d8	10.752

Hit#	of	5	Tentative ID	MW	MolForm	CAS#	Qual
1			Benzene, 1-chloro-3-nitro-	157	C6H4ClNO2	000121-73-3	96
2			Benzene, 1-chloro-4-nitro-	157	C6H4ClNO2	000100-00-5	94
3			Benzene, 1-chloro-3-nitro-	157	C6H4ClNO2	000121-73-3	91
4			Benzene, 1-chloro-4-nitro-	157	C6H4ClNO2	000100-00-5	87
5			Benzene, 1-chloro-4-nitro-	157	C6H4ClNO2	000100-00-5	83



Data Path : Z:\svoasrv\HPCHEM1\BNA_N\Data\BN042223\
 Data File : BN025078.D
 Acq On : 22 Apr 2023 16:20
 Operator : CG/JU
 Sample : 02378-14
 Misc :
 ALS Vial : 10 Sample Multiplier: 1

Instrument :
 BNA_N
 ClientSampleId :
 COMK7

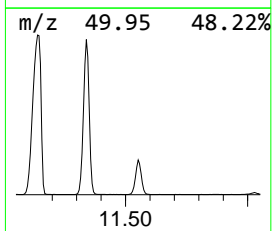
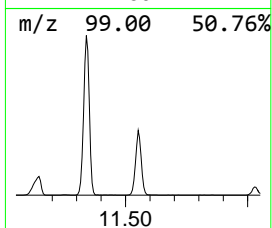
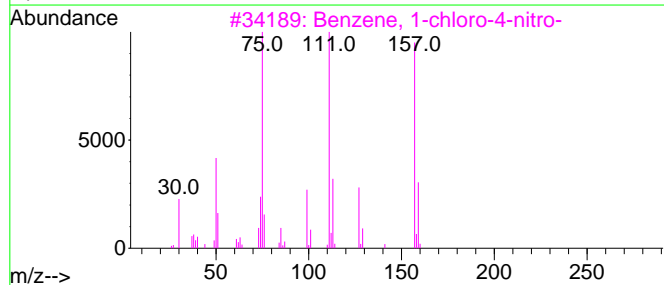
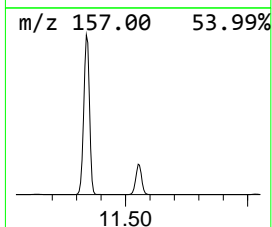
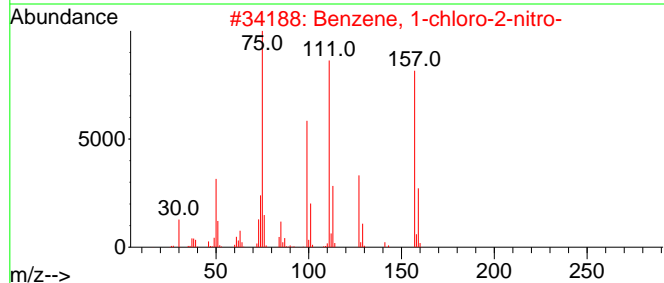
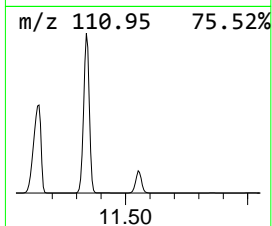
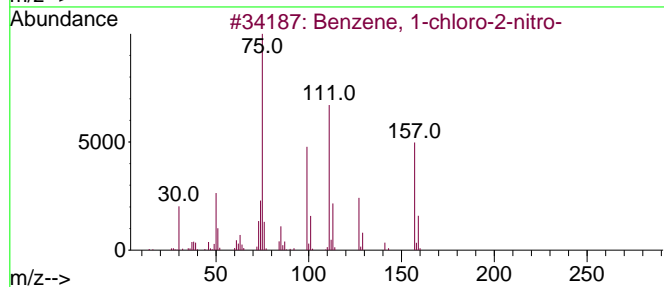
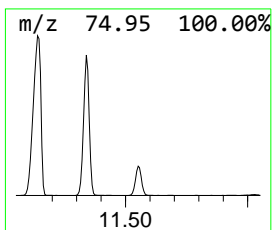
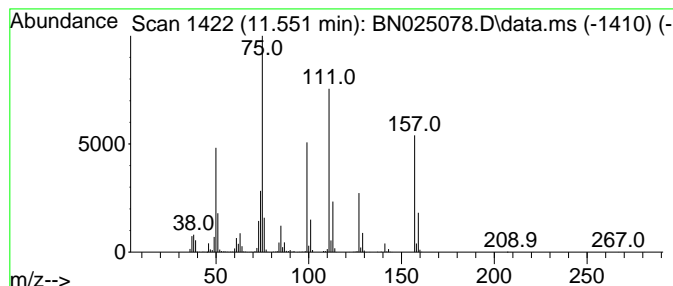
Quant Method : Z:\svoasrv\HPCHEM1\BNA_N\Methods\SFAM-EPA-BN041023.M
 Quant Title : SVOA CALIBRATION

TIC Library : C:\Database\NIST20.L
 TIC Integration Parameters: LSCINT.P

 Peak Number 14 Benzene, 1-chloro-2-nitro- Concentration Rank 9

R.T.	EstConc	Area	Relative to ISTD	R.T.
11.552	17.91 ng/ul	2111770	Naphthalene-d8	10.752

Hit#	of	5	Tentative ID	MW	MolForm	CAS#	Qual
1			Benzene, 1-chloro-2-nitro-	157	C6H4ClNO2	000088-73-3	98
2			Benzene, 1-chloro-2-nitro-	157	C6H4ClNO2	000088-73-3	97
3			Benzene, 1-chloro-4-nitro-	157	C6H4ClNO2	000100-00-5	94
4			Benzene, 1-chloro-3-nitro-	157	C6H4ClNO2	000121-73-3	93
5			Benzene, 1-chloro-4-nitro-	157	C6H4ClNO2	000100-00-5	93



Data Path : Z:\svoasrv\HPCHEM1\BNA_N\Data\BN042223\
 Data File : BN025078.D
 Acq On : 22 Apr 2023 16:20
 Operator : CG/JU
 Sample : 02378-14
 Misc :
 ALS Vial : 10 Sample Multiplier: 1

Instrument :
 BNA_N
 ClientSampleId :
 COMK7

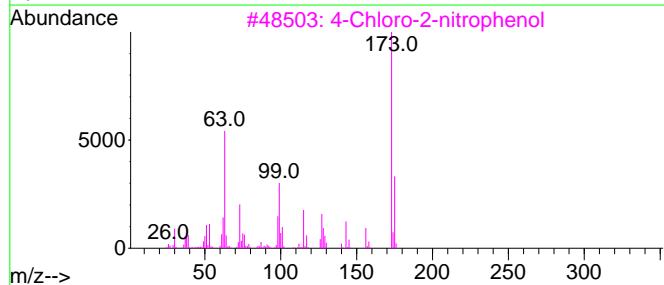
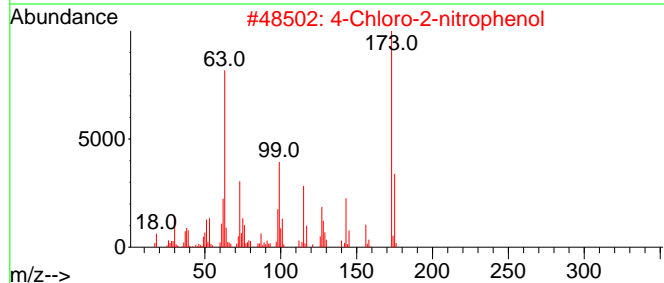
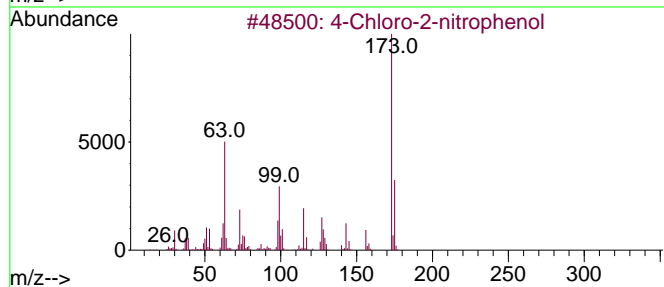
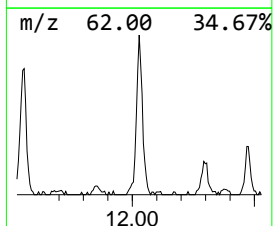
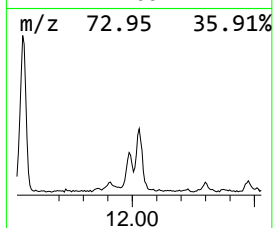
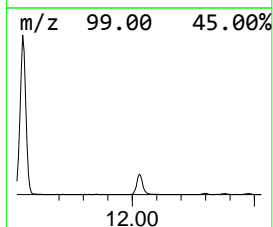
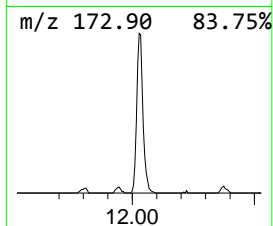
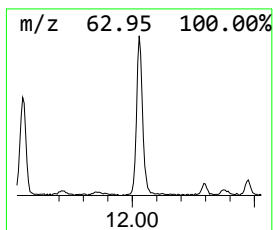
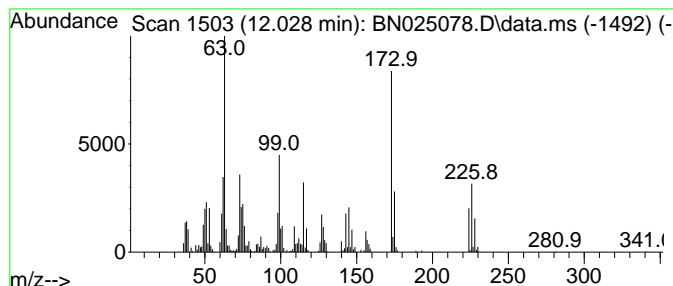
Quant Method : Z:\svoasrv\HPCHEM1\BNA_N\Methods\SFAM-EPA-BN041023.M
 Quant Title : SVOA CALIBRATION

TIC Library : C:\Database\NIST20.L
 TIC Integration Parameters: LSCINT.P

 Peak Number 15 4-Chloro-2-nitrophenol Concentration Rank 16

R.T.	EstConc	Area	Relative to ISTD	R.T.
12.028	5.19 ng/ul	612341	Naphthalene-d8	10.752

Hit#	of	5	Tentative ID	MW	MolForm	CAS#	Qual
1			4-Chloro-2-nitrophenol	173	C6H4ClNO3	000089-64-5	96
2			4-Chloro-2-nitrophenol	173	C6H4ClNO3	000089-64-5	96
3			4-Chloro-2-nitrophenol	173	C6H4ClNO3	000089-64-5	95
4			3-Chloro-4-nitrophenol	173	C6H4ClNO3	000491-11-2	93
5			2-Chloro-6-nitrophenol	173	C6H4ClNO3	000603-86-1	91



Data Path : Z:\svoasrv\HPCHEM1\BNA_N\Data\BN042223\
 Data File : BN025078.D
 Acq On : 22 Apr 2023 16:20
 Operator : CG/JU
 Sample : 02378-14
 Misc :
 ALS Vial : 10 Sample Multiplier: 1

Instrument :
 BNA_N
 ClientSampleId :
 COMK7

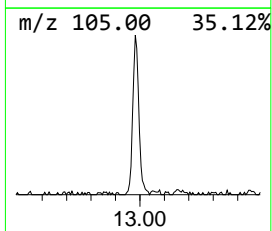
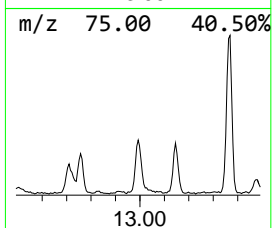
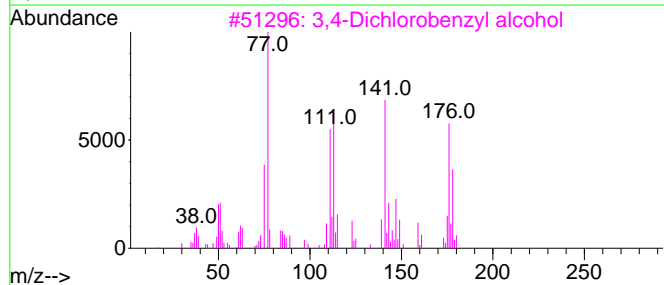
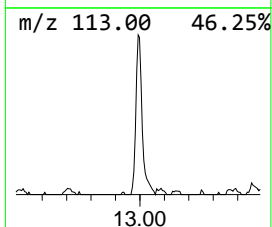
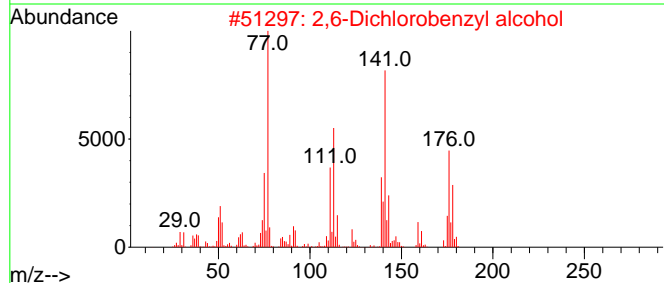
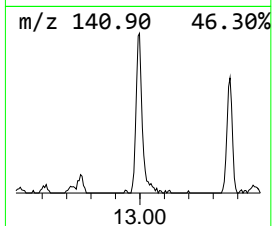
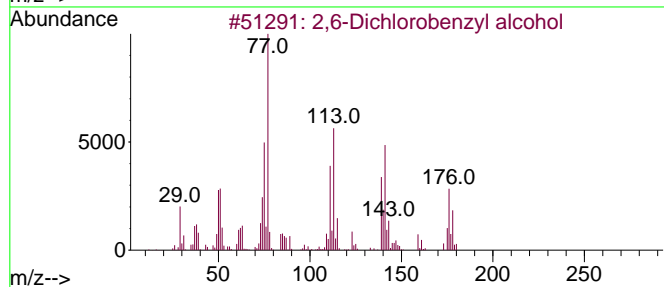
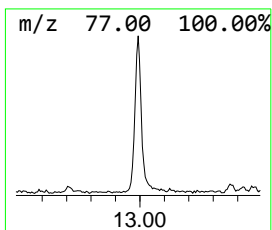
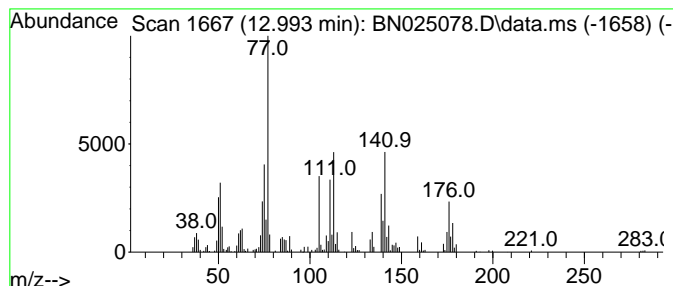
Quant Method : Z:\svoasrv\HPCHEM1\BNA_N\Methods\SFAM-EPA-BN041023.M
 Quant Title : SVOA CALIBRATION

TIC Library : C:\Database\NIST20.L
 TIC Integration Parameters: LSCINT.P

 Peak Number 16 2,6-Dichlorobenzyl alcohol Concentration Rank 22

R.T.	EstConc	Area	Relative to ISTD	R.T.
12.993	2.29 ng/ul	358189	Acenaphthene-d10	14.563

Hit#	of 5	Tentative ID	MW	MolForm	CAS#	Qual
1		2,6-Dichlorobenzyl alcohol	176	C7H6Cl2O	015258-73-8	97
2		2,6-Dichlorobenzyl alcohol	176	C7H6Cl2O	015258-73-8	96
3		3,4-Dichlorobenzyl alcohol	176	C7H6Cl2O	001805-32-9	94
4		Benzenemethanol, 2,4-dichloro-	176	C7H6Cl2O	001777-82-8	87
5		3,5-Dichlorobenzyl alcohol	176	C7H6Cl2O	060211-57-6	83



Data Path : Z:\svoasrv\HPCHEM1\BNA_N\Data\BN042223\
 Data File : BN025078.D
 Acq On : 22 Apr 2023 16:20
 Operator : CG/JU
 Sample : 02378-14
 Misc :
 ALS Vial : 10 Sample Multiplier: 1

Instrument :
 BNA_N
 ClientSampleId :
 COMK7

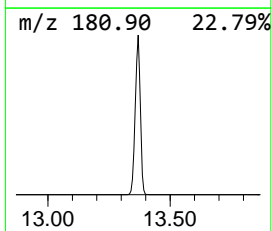
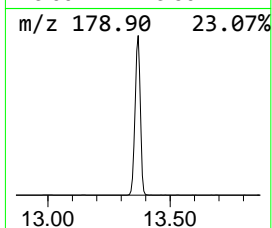
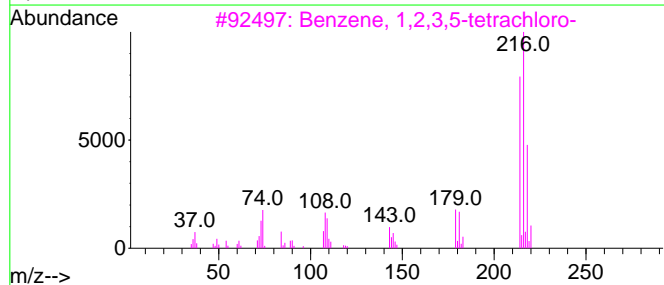
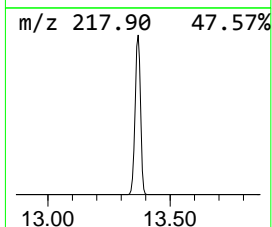
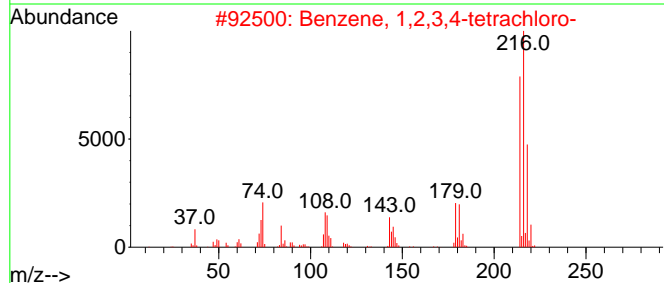
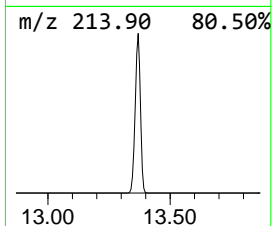
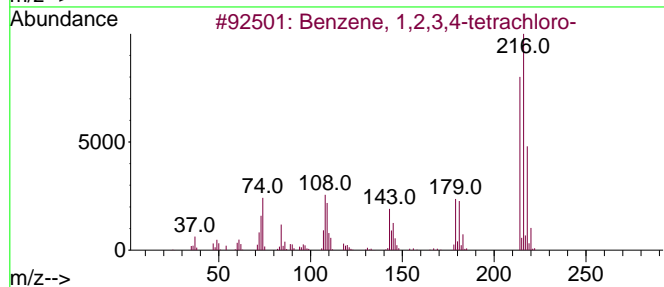
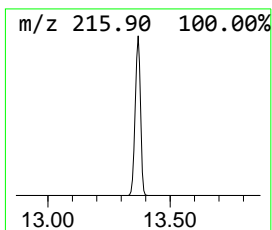
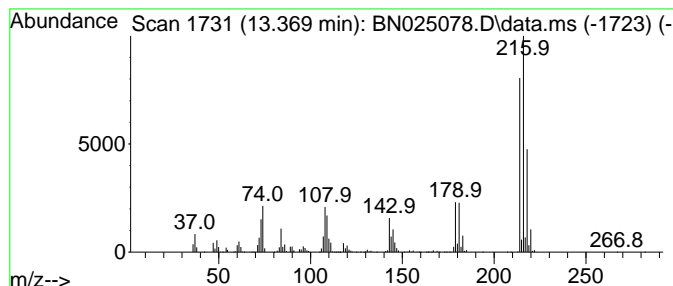
Quant Method : Z:\svoasrv\HPCHEM1\BNA_N\Methods\SFAM-EPA-BN041023.M
 Quant Title : SVOA CALIBRATION

TIC Library : C:\Database\NIST20.L
 TIC Integration Parameters: LSCINT.P

 Peak Number 17 Benzene, 1,2,3,4-tetrachloro- Concentration Rank 3

R.T.	EstConc	Area	Relative to ISTD	R.T.
13.369	89.10 ng/ul	13961000	Acenaphthene-d10	14.563

Hit#	of	5	Tentative ID	MW	MolForm	CAS#	Qual
1			Benzene, 1,2,3,4-tetrachloro-	214	C6H2Cl4	000634-66-2	99
2			Benzene, 1,2,3,4-tetrachloro-	214	C6H2Cl4	000634-66-2	99
3			Benzene, 1,2,3,5-tetrachloro-	214	C6H2Cl4	000634-90-2	99
4			Benzene, 1,2,4,5-tetrachloro-	214	C6H2Cl4	000095-94-3	99
5			Benzene, 1,2,4,5-tetrachloro-	214	C6H2Cl4	000095-94-3	99



Data Path : Z:\svoasrv\HPCHEM1\BNA_N\Data\BN042223\
 Data File : BN025078.D
 Acq On : 22 Apr 2023 16:20
 Operator : CG/JU
 Sample : 02378-14
 Misc :
 ALS Vial : 10 Sample Multiplier: 1

Instrument :
 BNA_N
 ClientSampleId :
 COMK7

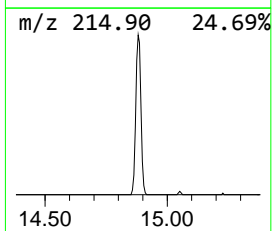
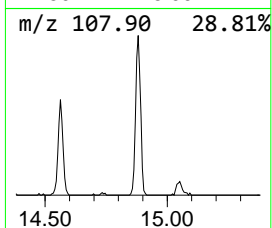
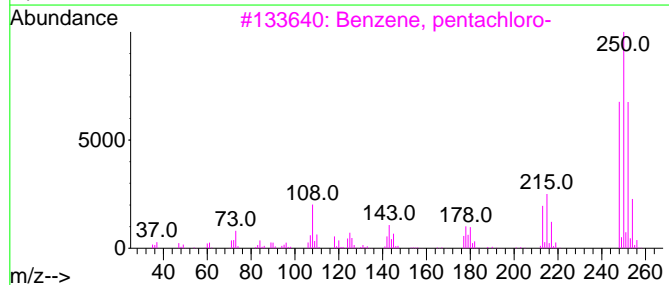
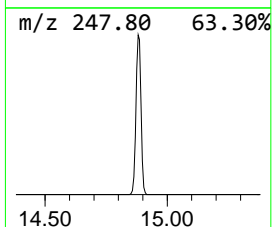
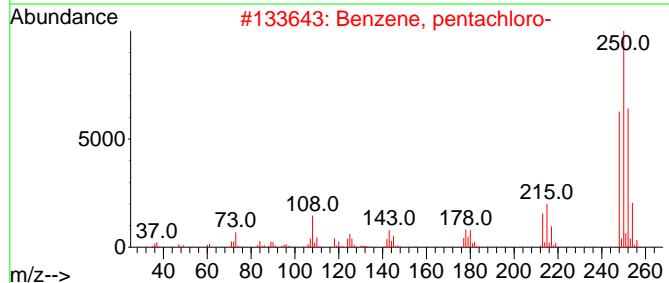
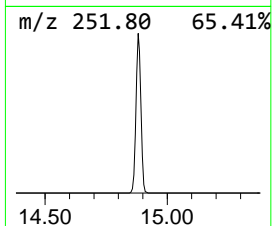
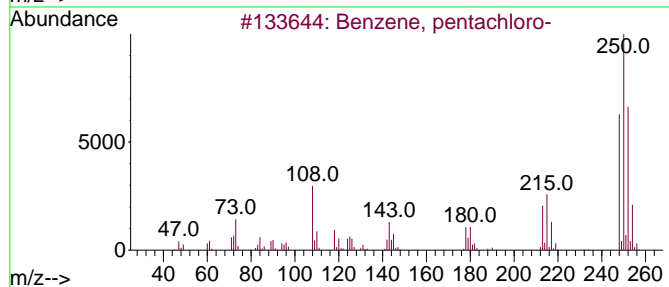
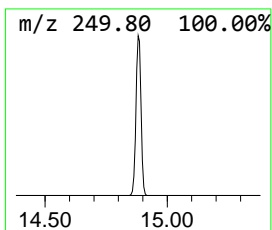
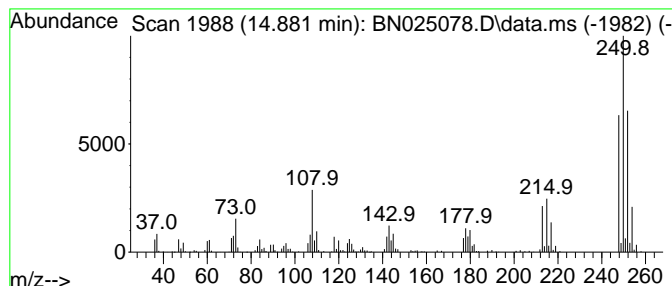
Quant Method : Z:\svoasrv\HPCHEM1\BNA_N\Methods\SFAM-EPA-BN041023.M
 Quant Title : SVOA CALIBRATION

TIC Library : C:\Database\NIST20.L
 TIC Integration Parameters: LSCINT.P

 Peak Number 18 Benzene, pentachloro- Concentration Rank 17

R.T.	EstConc	Area	Relative to ISTD	R.T.
14.881	3.98 ng/ul	623298	Acenaphthene-d10	14.563

Hit#	of 5	Tentative ID	MW	MolForm	CAS#	Qual
1		Benzene, pentachloro-	248	C6HC15	000608-93-5	99
2		Benzene, pentachloro-	248	C6HC15	000608-93-5	99
3		Benzene, pentachloro-	248	C6HC15	000608-93-5	99
4		Benzene, pentachloro-	248	C6HC15	000608-93-5	96
5		Benzene, pentachloro-	248	C6HC15	000608-93-5	96



Data Path : Z:\svoasrv\HPCHEM1\BNA_N\Data\BN042223\
 Data File : BN025078.D
 Acq On : 22 Apr 2023 16:20
 Operator : CG/JU
 Sample : 02378-14
 Misc :
 ALS Vial : 10 Sample Multiplier: 1

Instrument :
 BNA_N
 ClientSampleId :
 COMK7

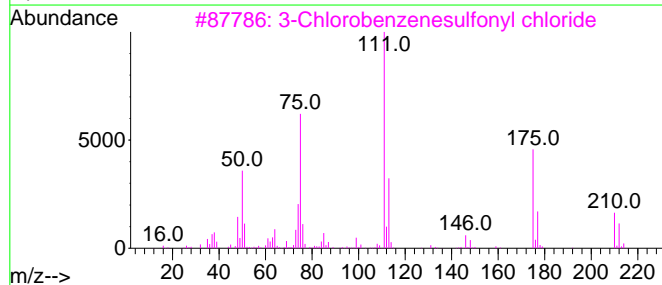
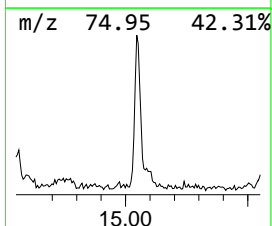
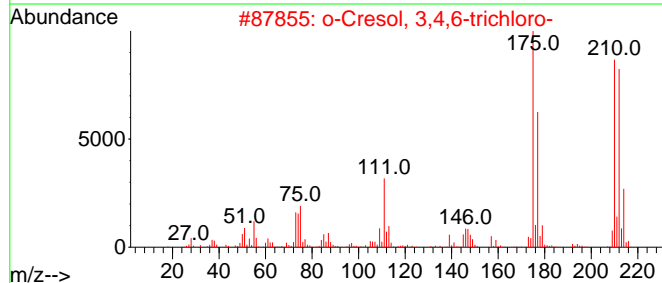
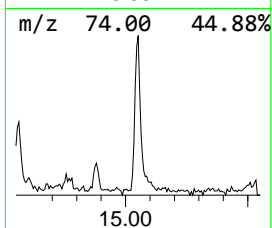
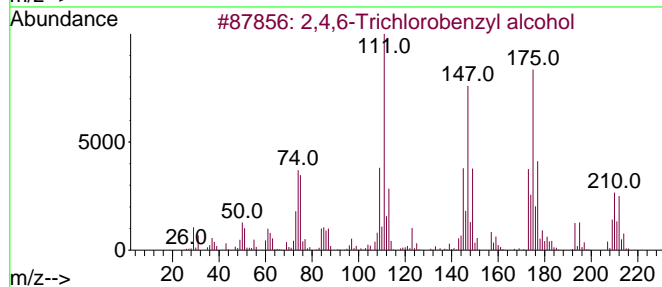
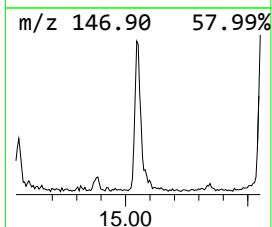
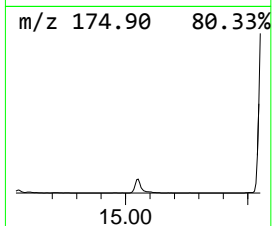
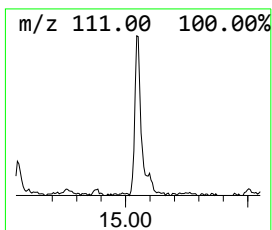
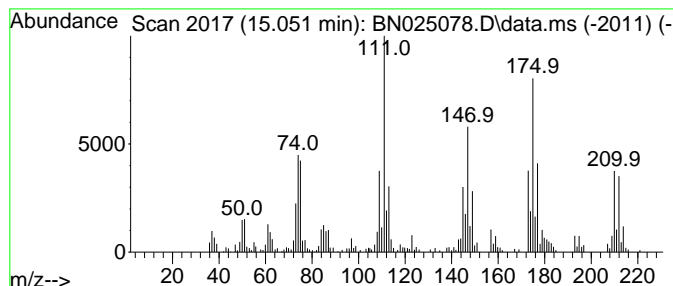
Quant Method : Z:\svoasrv\HPCHEM1\BNA_N\Methods\SFAM-EPA-BN041023.M
 Quant Title : SVOA CALIBRATION

TIC Library : C:\Database\NIST20.L
 TIC Integration Parameters: LSCINT.P

 Peak Number 19 2,4,6-Trichlorobenzyl alcohol Concentration Rank 20

R.T.	EstConc	Area	Relative to ISTD	R.T.
15.051	2.41 ng/ul	377227	Acenaphthene-d10	14.563

Hit#	of 5	Tentative ID	MW	MolForm	CAS#	Qual
1		2,4,6-Trichlorobenzyl alcohol	210	C7H5Cl3O	217479-60-2	86
2		o-Cresol, 3,4,6-trichloro-	210	C7H5Cl3O	000643-14-1	62
3		3-Chlorobenzenesulfonyl chloride	210	C6H4Cl2O2S	002888-06-4	60
4		Benzenemethanol, 3,4-dichloro-.a...	190	C8H8Cl2O	001475-11-2	50
5		2,5-Dichloro-.alpha.-methylbenzy...	190	C8H8Cl2O	001475-12-3	47



Data Path : Z:\svoasrv\HPCHEM1\BNA_N\Data\BN042223\
 Data File : BN025078.D
 Acq On : 22 Apr 2023 16:20
 Operator : CG/JU
 Sample : 02378-14
 Misc :
 ALS Vial : 10 Sample Multiplier: 1

Instrument :
 BNA_N
 ClientSampleId :
 COMK7

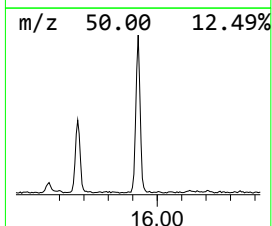
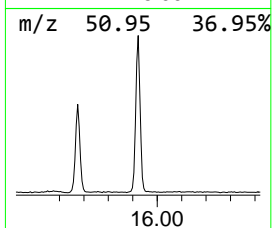
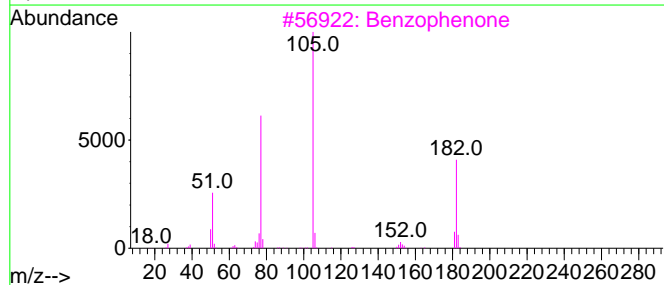
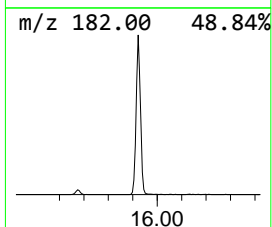
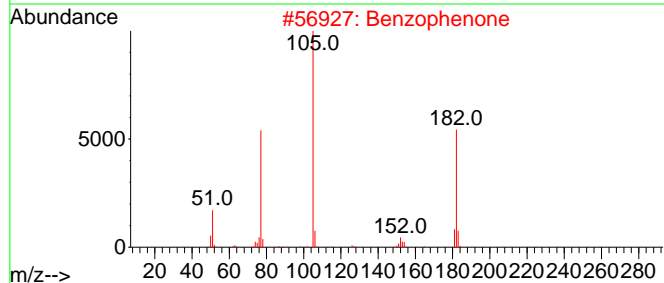
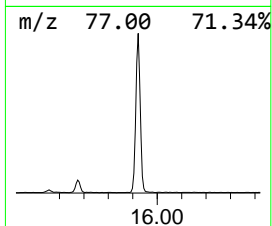
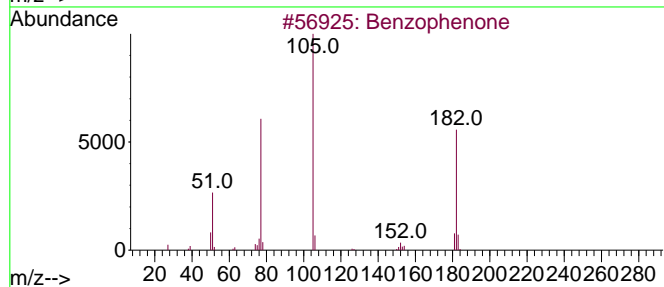
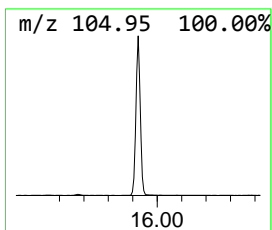
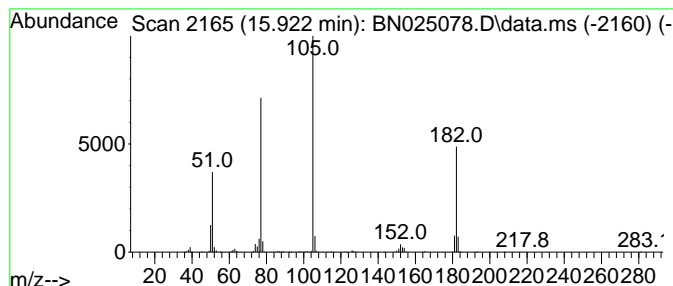
Quant Method : Z:\svoasrv\HPCHEM1\BNA_N\Methods\SFAM-EPA-BN041023.M
 Quant Title : SVOA CALIBRATION

TIC Library : C:\Database\NIST20.L
 TIC Integration Parameters: LSCINT.P

 Peak Number 20 Benzophenone Concentration Rank 11

R.T.	EstConc	Area	Relative to ISTD	R.T.
15.922	7.80 ng/ul	1221670	Acenaphthene-d10	14.563

Hit#	of 5	Tentative ID	MW	MolForm	CAS#	Qual
1		Benzophenone	182	C13H10O	000119-61-9	95
2		Benzophenone	182	C13H10O	000119-61-9	95
3		Benzophenone	182	C13H10O	000119-61-9	94
4		Benzophenone	182	C13H10O	000119-61-9	91
5		Benzophenone	182	C13H10O	000119-61-9	91



Data Path : Z:\svoasrv\HPCHEM1\BNA_N\Data\BN042223\
 Data File : BN025078.D
 Acq On : 22 Apr 2023 16:20
 Operator : CG/JU
 Sample : 02378-14
 Misc :
 ALS Vial : 10 Sample Multiplier: 1

Instrument :
 BNA_N
 ClientSampleId :
 COMK7

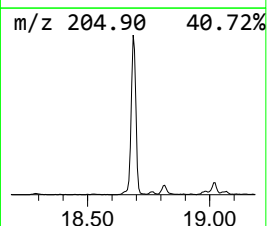
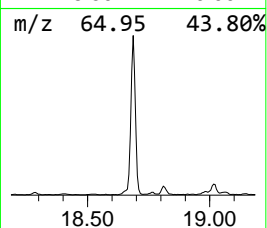
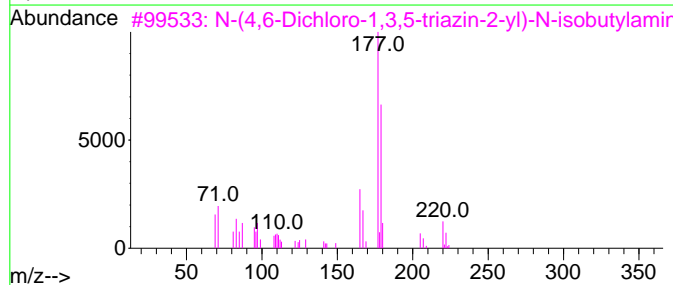
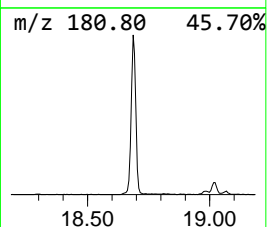
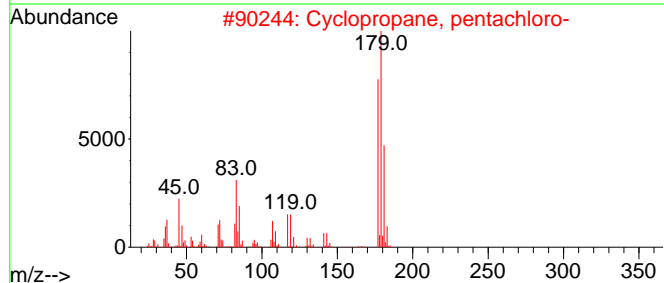
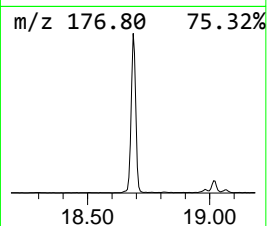
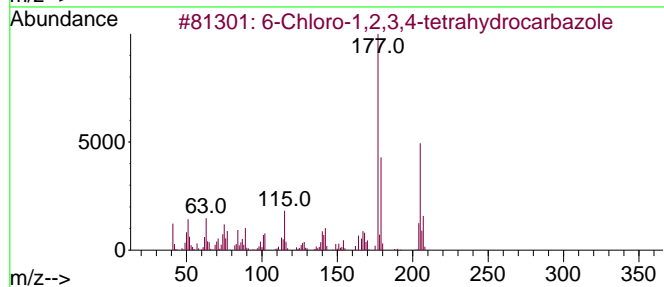
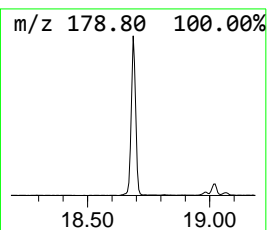
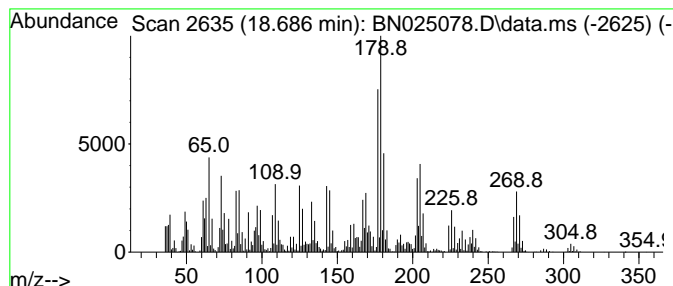
Quant Method : Z:\svoasrv\HPCHEM1\BNA_N\Methods\SFAM-EPA-BN041023.M
 Quant Title : SVOA CALIBRATION

TIC Library : C:\Database\NIST20.L
 TIC Integration Parameters: LSCINT.P

 Peak Number 21 unknown-01 Concentration Rank 5

R.T.	EstConc	Area	Relative to ISTD	R.T.
18.686	29.25 ng/ul	5369080	Phenanthrene-d10	17.310

Hit#	of 5	Tentative ID	MW	MolForm	CAS#	Qual
1		6-Chloro-1,2,3,4-tetrahydrocarba...	205	C12H12ClN	036684-65-8	35
2		Cyclopropane, pentachloro-	212	C3HC15	006262-51-7	27
3		N-(4,6-Dichloro-1,3,5-triazin-2-...	220	C7H10Cl2N4	1000326-88-2	25
4		3-(4-Chlorophenyl)-1H-1,2,4-tria...	179	C8H6ClN3	023195-59-7	14
5		4,5-Dichloro-2-fluoroaniline	179	C6H4Cl2FN	002729-36-4	11



Data Path : Z:\svoasrv\HPCHEM1\BNA_N\Data\BN042223\
 Data File : BN025078.D
 Acq On : 22 Apr 2023 16:20
 Operator : CG/JU
 Sample : 02378-14
 Misc :
 ALS Vial : 10 Sample Multiplier: 1

Instrument :
 BNA_N
 ClientSampleId :
 COMK7

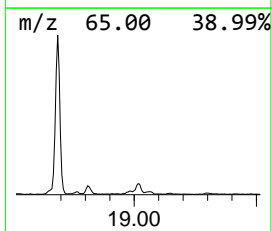
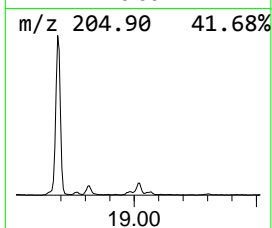
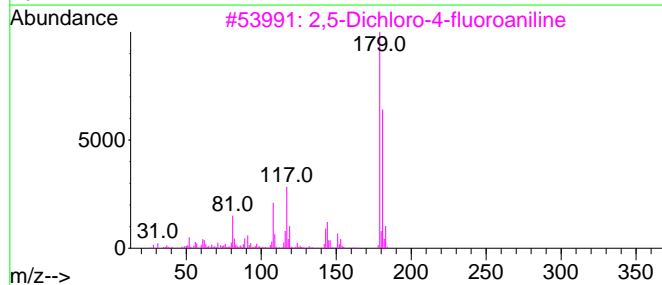
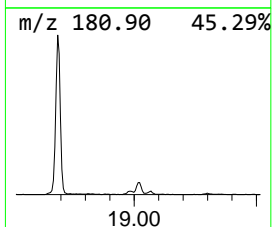
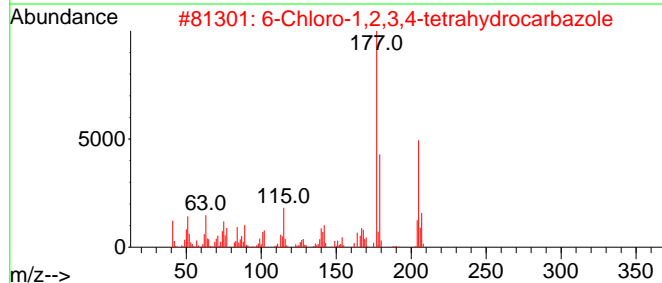
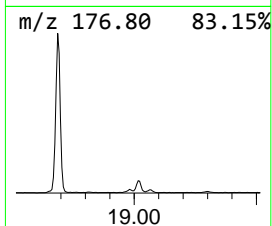
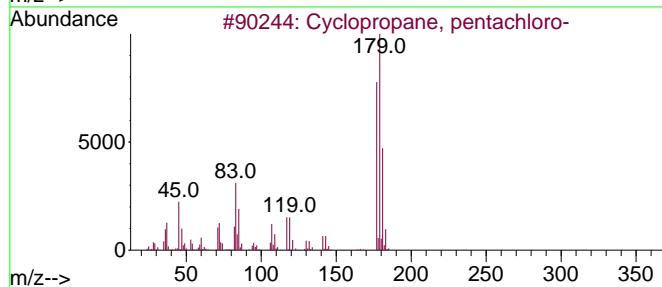
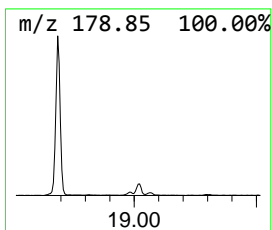
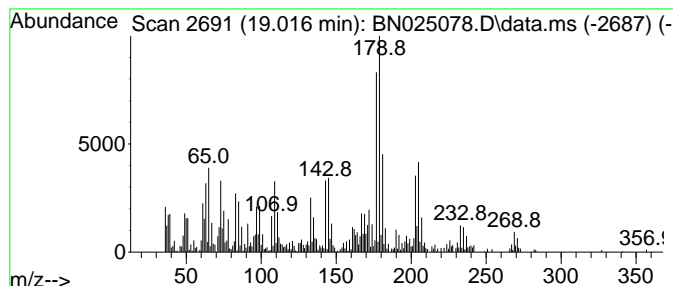
Quant Method : Z:\svoasrv\HPCHEM1\BNA_N\Methods\SFAM-EPA-BN041023.M
 Quant Title : SVOA CALIBRATION

TIC Library : C:\Database\NIST20.L
 TIC Integration Parameters: LSCINT.P

 Peak Number 22 unknown-02 Concentration Rank 21

R.T.	EstConc	Area	Relative to ISTD	R.T.
19.016	2.41 ng/ul	441852	Phenanthrene-d10	17.310

Hit#	of 5	Tentative ID	MW	MolForm	CAS#	Qual
1		Cyclopropane, pentachloro-	212	C3HC15	006262-51-7	25
2		6-Chloro-1,2,3,4-tetrahydrocarba...	205	C12H12ClN	036684-65-8	18
3		2,5-Dichloro-4-fluoroaniline	179	C6H4Cl2FN	002729-37-5	15
4		4-Chloro-3-phenyl-1,2,4-triazole	179	C8H6ClN3	1000147-16-1	14
5		N-(5-Bromothiophen-2-yl)acetamide	219	C6H6BrNOS	068236-26-0	10



Data Path : Z:\svoasrv\HPCHEM1\BNA_N\Data\BN042223\
 Data File : BN025078.D
 Acq On : 22 Apr 2023 16:20
 Operator : CG/JU
 Sample : 02378-14
 Misc :
 ALS Vial : 10 Sample Multiplier: 1

Instrument :
 BNA_N
 ClientSampleId :
 COMK7

Quant Method : Z:\svoasrv\HPCHEM1\BNA_N\Methods\SFAM-EPA-BN041023.M
 Quant Title : SVOA CALIBRATION

TIC Library : C:\Database\NIST0.L
 TIC Integration Parameters: LSCINT.P

TIC Top Hit name	RT	EstConc	Units	Response	--Internal Standard--			
					#	RT	Resp	Conc
Benzene, 1-brom...	9.428	23.5	ng/ul	2775010	2	10.752	2357620	20.0
Benzene, 1,2-di...	9.657	6.5	ng/ul	770738	2	10.752	2357620	20.0
Benzene, 1-chlo...	9.699	7.0	ng/ul	823839	2	10.752	2357620	20.0
Benzene, 1-brom...	9.740	14.1	ng/ul	1655910	2	10.752	2357620	20.0
Benzene, 1,3-di...	10.110	2.4	ng/ul	285075	2	10.752	2357620	20.0
1,4-Benzenediol...	10.493	3.2	ng/ul	374737	2	10.752	2357620	20.0
Benzene, 1-chlo...	11.340	78.0	ng/ul	9188620	2	10.752	2357620	20.0
Benzene, 1-chlo...	11.552	17.9	ng/ul	2111770	2	10.752	2357620	20.0
4-Chloro-2-nitr...	12.028	5.2	ng/ul	612341	2	10.752	2357620	20.0
2,6-Dichloroben...	12.993	2.3	ng/ul	358189	3	14.563	3133720	20.0
Benzene, 1,2,3,...	13.369	89.1	ng/ul	13961000	3	14.563	3133720	20.0
Benzene, pentac...	14.881	4.0	ng/ul	623298	3	14.563	3133720	20.0
2,4,6-Trichloro...	15.051	2.4	ng/ul	377227	3	14.563	3133720	20.0
Benzophenone	15.922	7.8	ng/ul	1221670	3	14.563	3133720	20.0
unknown-01	18.686	29.3	ng/ul	5369080	4	17.310	3671530	20.0
unknown-02	19.016	2.4	ng/ul	441852	4	17.310	3671530	20.0